

REVISIONS			
REV	DESCRIPTION	DATE	APPROVED
A	REVISED TO ADD 3/4 LITE PANEL	02/10/2021	R.L.
B	REVISED TO ADD INSTALLATION DETAILS	03/14/2022	R.L.

NOTES:

1. THE PRODUCT SHOWN HEREIN IS DESIGNED AND MANUFACTURED TO COMPLY WITH REQUIREMENTS OF THE 2018 IBC AND 2018 IRC.
2. WOOD FRAMING AND MASONRY OPENING TO BE DESIGNED AND ANCHORED TO PROPERLY TRANSFER ALL LOADS TO STRUCTURE. FRAMING AND MASONRY OPENING IS THE RESPONSIBILITY OF THE ARCHITECT OR ENGINEER OF RECORD.
3. WHERE SHIM OR BUCK THICKNESS IS LESS THAN 1-1/2" WINDOW UNITS MUST BE ANCHORED THROUGH THE FRAME IN ACCORDANCE WITH MANUFACTURER'S PUBLISHED INSTALLATION INSTRUCTIONS. ANCHORS SHALL BE SECURELY FASTENED DIRECTLY INTO MASONRY, CONCRETE OR OTHER STRUCTURAL SUBSTRATE MATERIAL.
4. WHERE WOOD BUCK THICKNESS IS 1-1/2" OR GREATER, BUCK SHALL BE SECURELY FASTENED TO MASONRY, CONCRETE OR OTHER STRUCTURAL SUBSTRATE. WINDOW UNITS MAY BE ANCHORED THROUGH FRAME TO SECURED WOOD BUCK IN ACCORDANCE WITH MANUFACTURER'S PUBLISHED INSTALLATION INSTRUCTIONS.
5. WHERE 1X BUCK IS NOT USED DISSIMILAR MATERIALS MUST BE SEPARATED WITH APPROVED COATING OR MEMBRANE. SELECTION OF COATING OR MEMBRANE IS THE RESPONSIBILITY OF THE ARCHITECT OR ENGINEER OF RECORD.
6. BUCKS SHALL EXTEND BEYOND WINDOW INTERIOR FACE SO THAT FULL FRAME SUPPORT IS PROVIDED.
7. SHIM AS REQUIRED AT EACH ANCHOR LOCATION WITH LOAD BEARING SHIM. SHIM WHERE SPACE OF 1/16" OR GREATER OCCURS. MAXIMUM ALLOWABLE SHIM STACK TO BE 1/4".
8. SHIMS SHALL BE LOCATED, APPLIED AND MADE FROM MATERIALS AND THICKNESS CAPABLE OF SUSTAINING APPLICABLE LOADS.
9. WIND LOAD DURATION FACTOR Cd=1.6 WAS USED FOR WOOD ANCHOR CALCULATIONS.
10. FRAME MATERIAL: CO-EXTRUDED PVC FOAM.
11. UNITS MUST BE GLAZED PER ASTM E1300, WITH SAFETY GLAZING.
12. APPROVED IMPACT PROTECTIVE SYSTEM IS REQUIRED FOR THIS PRODUCT IN WIND BORNE DEBRIS REGIONS.
13. FOR ANCHORING INTO WOOD FRAMING OR 2X BUCK USE #10 WOOD SCREWS WITH SUFFICIENT LENGTH TO ACHIEVE A 1 1/4" MINIMUM EMBEDMENT INTO SUBSTRATE. LOCATE ANCHORS AS SHOWN IN ELEVATIONS AND INSTALLATION DETAILS.

14. FOR ANCHORING INTO MASONRY/CONCRETE USE 3/16" TAPCON WITH SUFFICIENT LENGTH TO ACHIEVE A 1 3/4" MINIMUM EMBEDMENT INTO SUBSTRATE WITH 2" MINIMUM EDGE DISTANCE. LOCATE ANCHORS AS SHOWN IN ELEVATIONS AND INSTALLATION DETAILS.
15. FOR ANCHORING INTO METAL STRUCTURE USE #10 SMS OR SELF DRILLING SCREWS WITH SUFFICIENT LENGTH TO ACHIEVE 3 THREADS MINIMUM BEYOND STRUCTURE INTERIOR WALL. LOCATE ANCHORS AS SHOWN IN ELEVATIONS AND INSTALLATION DETAILS.
16. ALL FASTENERS TO BE CORROSION RESISTANT.
17. INSTALLATION ANCHORS SHALL BE INSTALLED IN ACCORDANCE WITH ANCHOR MANUFACTURER'S INSTALLATION INSTRUCTIONS AND ANCHORS SHALL NOT BE USED IN SUBSTRATES WITH STRENGTHS LESS THAN THE MINIMUM STRENGTH SPECIFIED BELOW:
 - A. WOOD - MINIMUM SPECIFIC GRAVITY OF G=0.42
 - B. CONCRETE - MINIMUM COMPRESSIVE STRENGTH OF 3,192 PSI.
 - C. MASONRY - GROUT FILLED BLOCK PER ASTM C-90 WITH Fm=2,000PSI MINIMUM.
 - D. METAL STRUCTURE: STEEL 18GA, 33KSI OR ALUMINUM 6063-T5 .125" THICK MINIMUM
18. APPROVED CONFIGURATIONS: X, X/O, O/X, OX, XO, OX/O, XO/O, XX, XX/O, O/XX, OXX, XXO, OXX/O AND O/XXO, SEE SHEET 3.
19. SIDELITES ARE ASSEMBLED TO FRAME WITH #10 X 3" WOOD SCREWS LOCATED 4" FROM EACH END AND 23 1/8" MAX O.C. THEREAFTER AT JAMBS AND 4" FROM EACH END AND ONE AT MIDSPAN AT HEAD AND SILL.

SIGNED: 03/25/2022

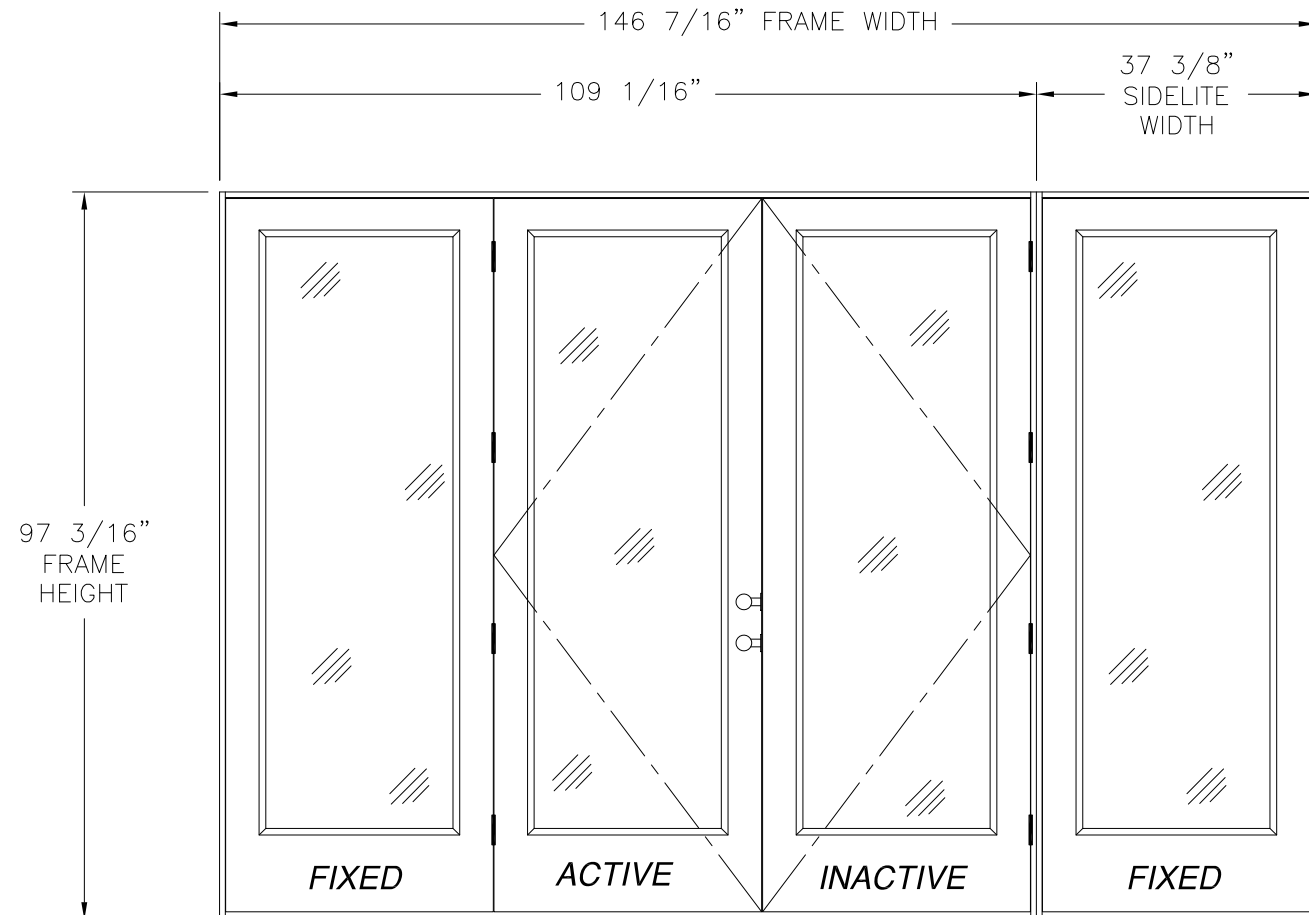
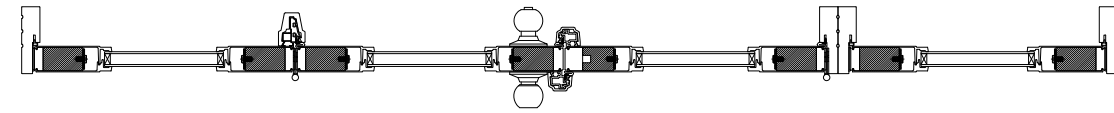
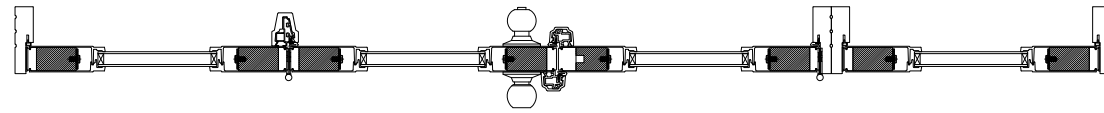
TABLE OF CONTENTS	
SHEET NO.	DESCRIPTION
1	NOTES
2	ELEVATION
3 - 4	APPROVED CONFIGURATIONS
5 - 6	ANCHORING LAYOUTS
7 - 15	INSTALLATION DETAILS
16 - 17	COMPONENTS

NAN YA PLASTICS CORPORATION U.S.A. 8989 NORTH LOOP EAST HOUSTON, TX 77029		
SERIES "SLPS LITE" GLAZED FIBERGLASS OUTSWING SIDE-HINGED DOOR W/SIDELITES NON-IMPACT NOTES		
DRAWN: A.R.	DWG NO. 08-03310	REV B
SCALE NTS	DATE 09/27/18	SHEET 1 OF 17
L. ROBERTO LOMAS P.E. 400 S. PALM AVE, INDIALANTIC, FL 32903 434-688-0609 rllomas@rlomaspe.com		



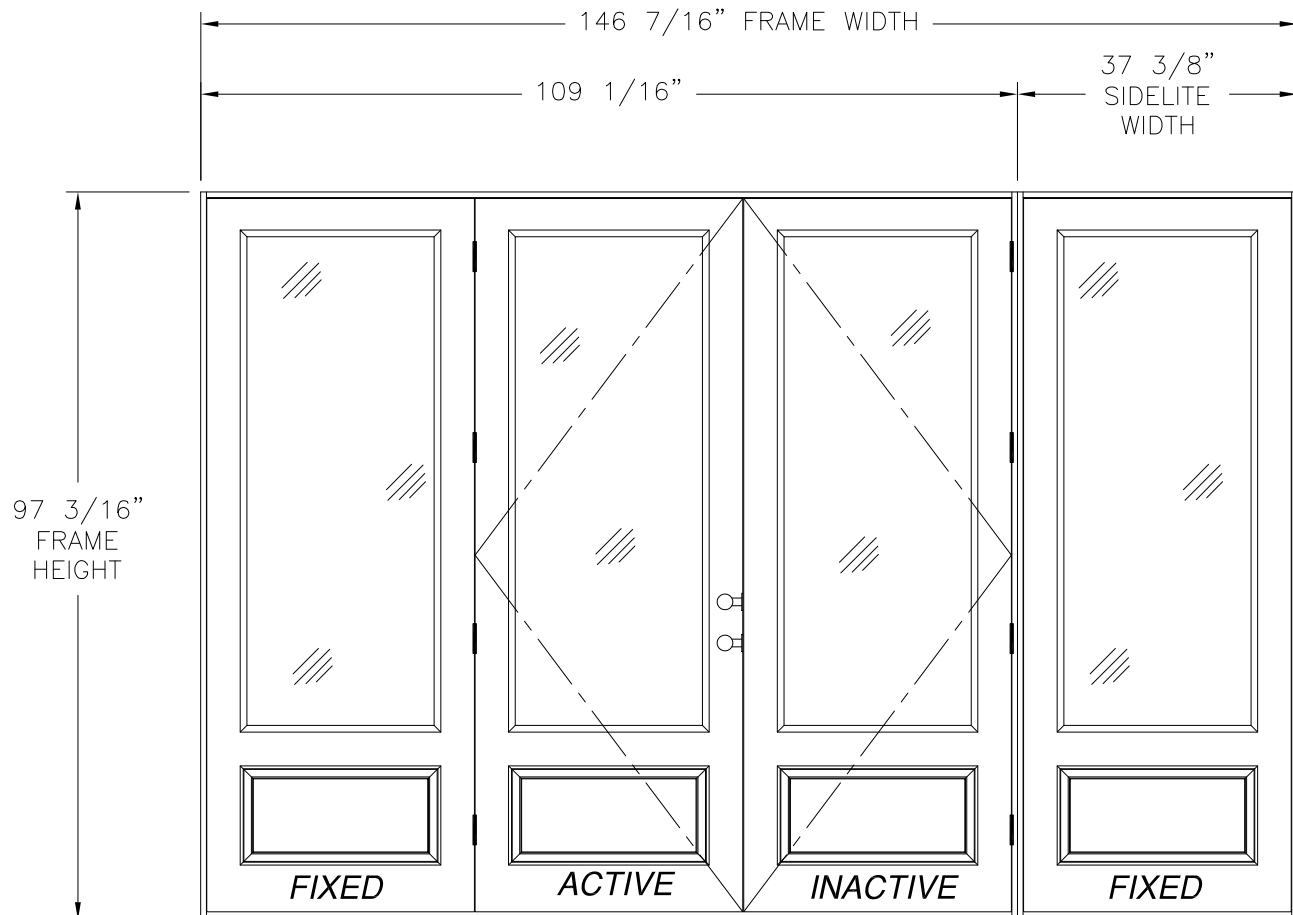
Luis R. Lomas P.E.
 TX No.: 101889
 Firm No: F-23130

REVISIONS			
REV	DESCRIPTION	DATE	APPROVED
A	REVISED TO ADD 3/4 LITE PANEL	02/10/2021	R.L.
B	REVISED TO ADD INSTALLATION DETAILS	03/14/2022	R.L.



SERIES SLPS OUT-SWING SIDE-HINGED DOOR W/SIDELITES

EXTERIOR VIEW
FULL LITE PANEL



SERIES SLPS OUT-SWING SIDE-HINGED DOOR W/SIDELITES

EXTERIOR VIEW
3/4 LITE PANEL

DESIGN PRESSURE RATING	IMPACT RATING
±45.0PSF	NONE

- NOTES:
- PANEL SIZE: 35 3/4" X 95 1/4"
 - D.L.O.: 25" X 79"

HARDWARE SCHEDULE

A.	HANDLE SETS AT ACTIVE PANEL
B.	STAINLESS STEEL FLUSH BOLT BAR AT PASSIVE PANEL
C.	FLUSH BOLT MECHANISM (DIE CAST, STEEL, POM) AT PASSIVE PANEL
D.	STEEL DEADBOLT WITH KEEPER, 54" FROM TOP OF DOOR PANEL AT ACTIVE PANEL
E.	STEEL LATCH WITH KEEPER, 59 1/2" FROM TOP OF DOOR PANEL AT ACTIVE PANEL
F.	T-ASTRAGAL AT ACTIVE AND INACTIVE PANEL STILES
G.	(4) 4X4 DOOR HINGE, 5 3/4", 31 1/4", 56 3/4" & 82 1/4" FROM FRAME HEAD AT STILE OF ACTIVE AND PASSIVE PANEL
H.	ALUMINUM REINFORCEMENT (A) AT ASTRAGAL
I.	ALUMINUM MULLION REINFORCEMENT (B) AT INTEGRAL MULLION

SIGNED: 03/25/2022

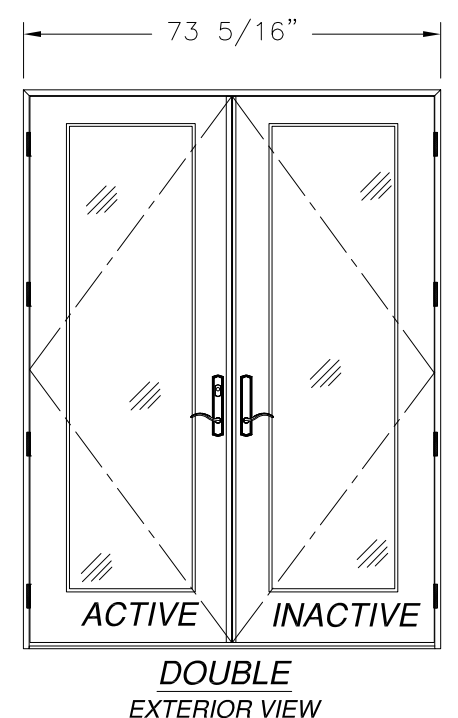
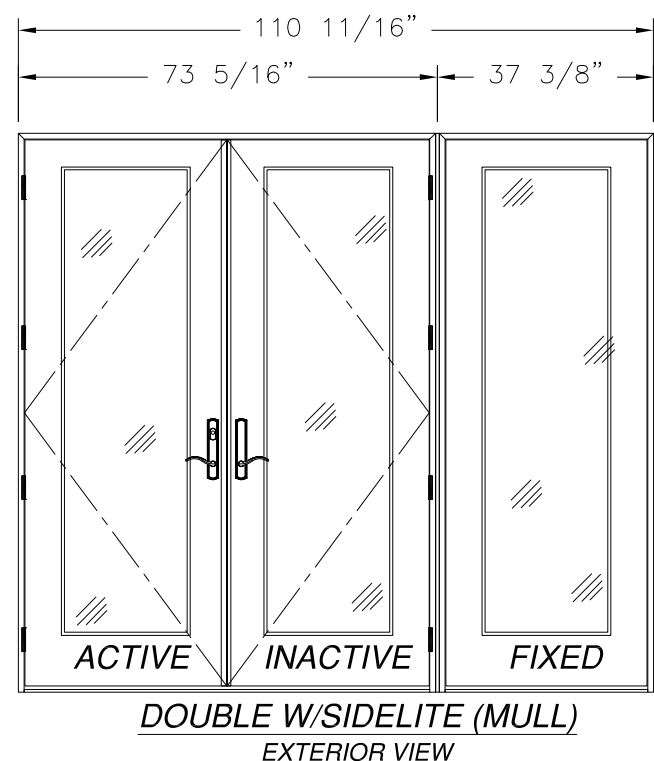
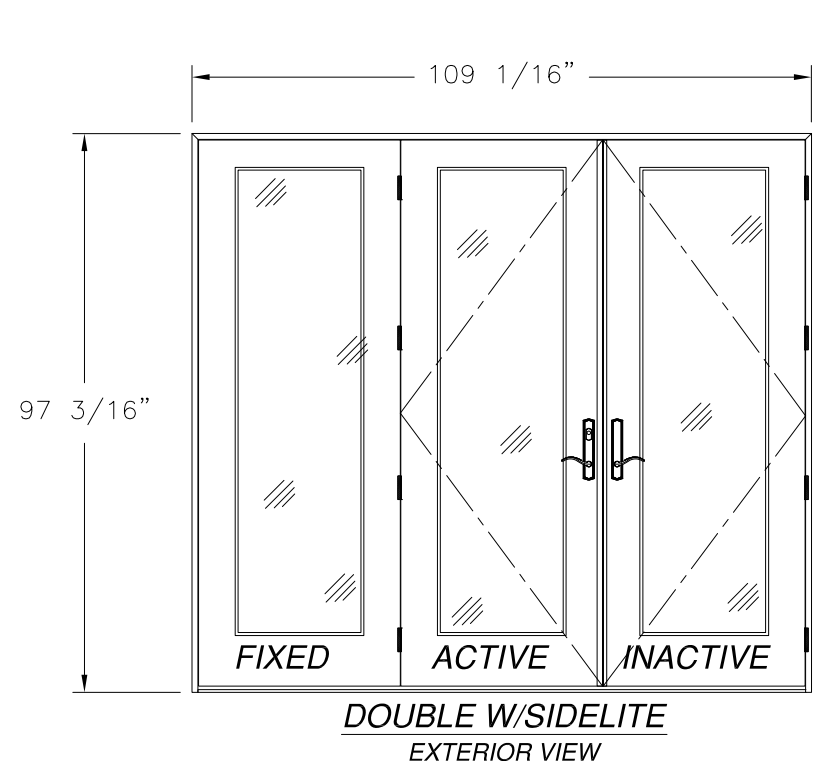
NAN YA PLASTICS CORPORATION U.S.A.
8989 NORTH LOOP EAST
HOUSTON, TX 77029

SERIES "SLPS LITE" GLAZED FIBERGLASS OUTSWING
SIDE-HINGED DOOR W/SIDELITES NON-IMPACT
ELEVATIONS

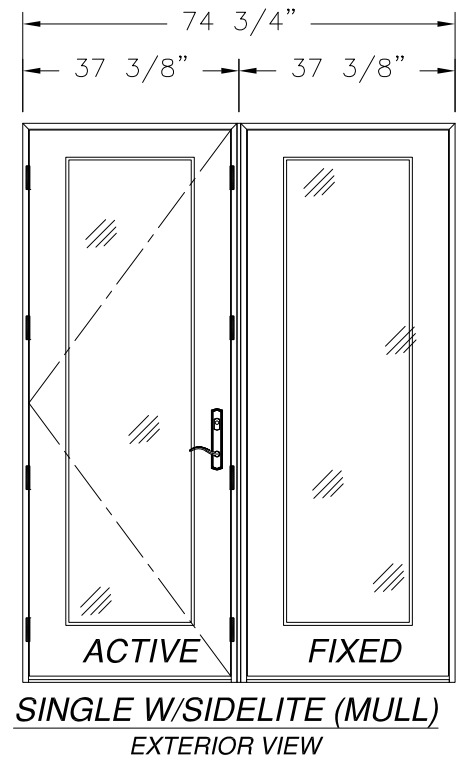
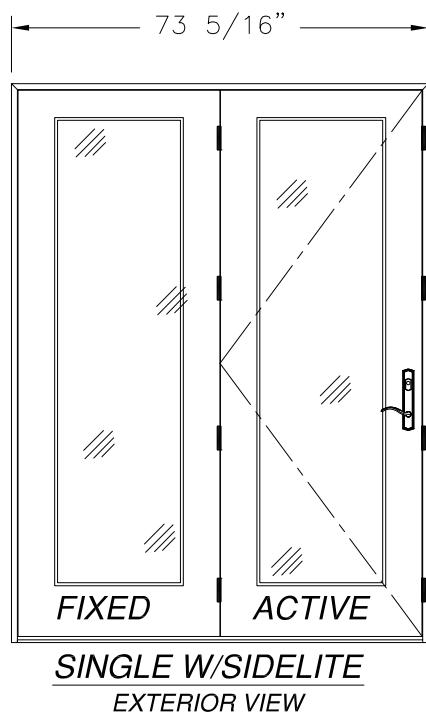
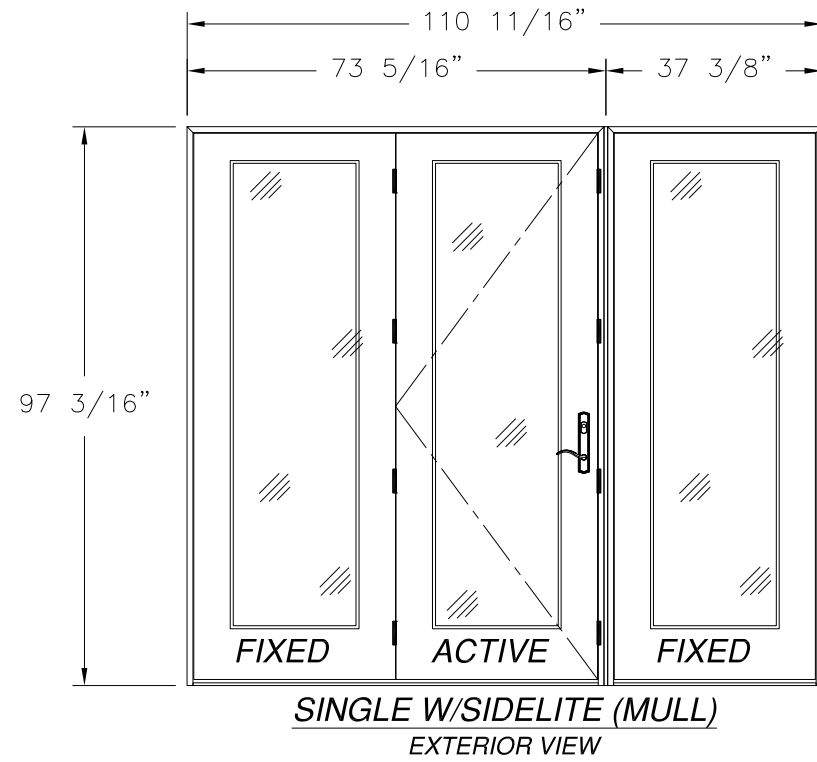
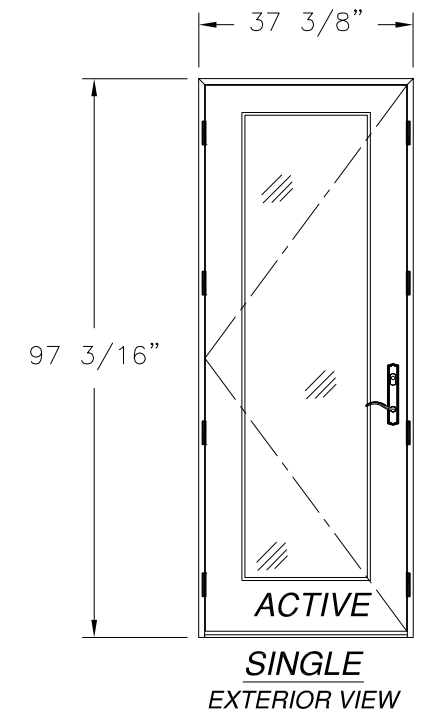
DRAWN: A.R.	DWG NO. 08-03310	REV B
SCALE NTS	DATE 09/27/18	SHEET 2 OF 17
L. ROBERTO LOMAS P.E. 400 S. PALM AVE, INDIALANTIC, FL 32903 434-688-0609 rllomas@rlomaspe.com		



Luis R. Lomas P.E.
TX No.: 101889
Firm No: F-23130



REVISIONS			
REV	DESCRIPTION	DATE	APPROVED
A	REVISED TO ADD 3/4 LITE PANEL	02/10/2021	R.L.
B	REVISED TO ADD INSTALLATION DETAILS	03/14/2022	R.L.



NOTE:
ALL APPROVED CONFIGURATIONS ARE SHOWN AS LEFT
HAND ACTIVE, RIGHT HAND ACTIVE IS ALSO APPROVED.

SIGNED: 03/25/2022

NAN YA PLASTICS CORPORATION U.S.A.
8989 NORTH LOOP EAST
HOUSTON, TX 77029

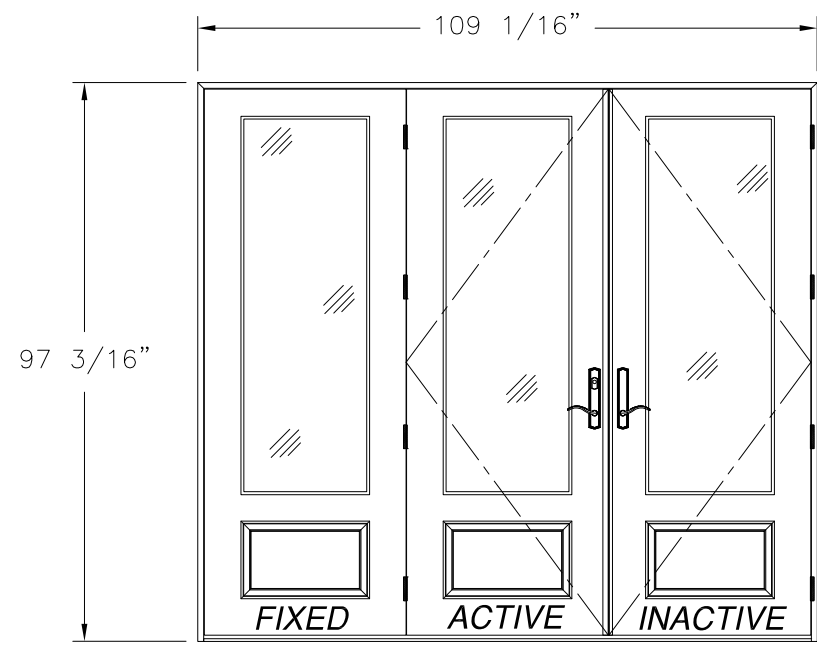
SERIES "SLPS LITE" GLAZED FIBERGLASS OUTSWING
SIDE-HINGED DOOR W/SIDELITES NON-IMPACT
APPROVED CONFIGURATIONS FULL LITE PANEL

DRAWN: A.R.	DWG NO. 08-03310	REV B
SCALE NTS	DATE 09/27/18	SHEET 3 OF 17

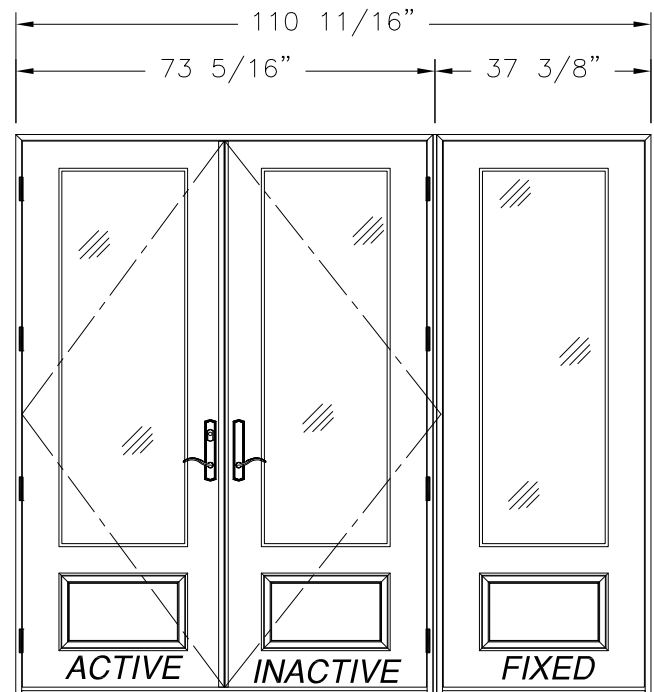
L. ROBERTO LOMAS P.E.
400 S. PALM AVE, INDIALANTIC, FL 32903
434-688-0609 rllomas@rlomaspe.com



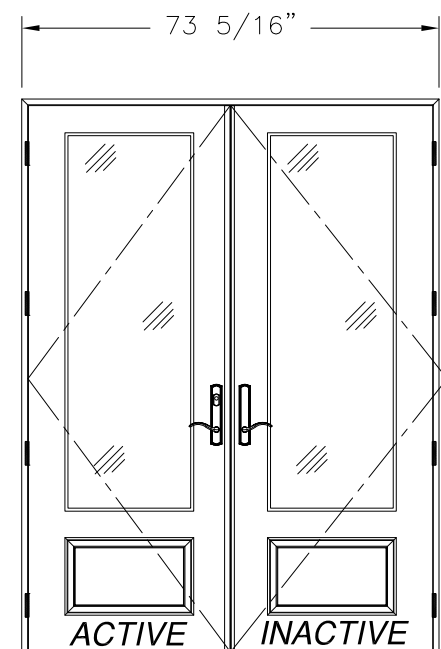
Luis R. Lomas P.E.
TX No.: 101889
Firm No: F-23130



DOUBLE W/SIDELITE
EXTERIOR VIEW

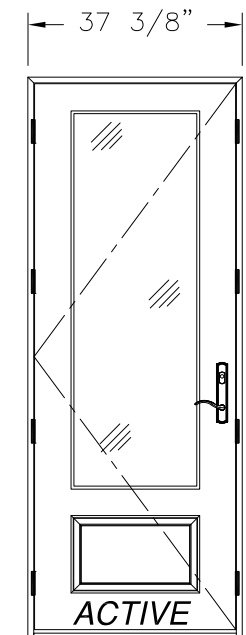


DOUBLE W/SIDELITE (MULL)
EXTERIOR VIEW

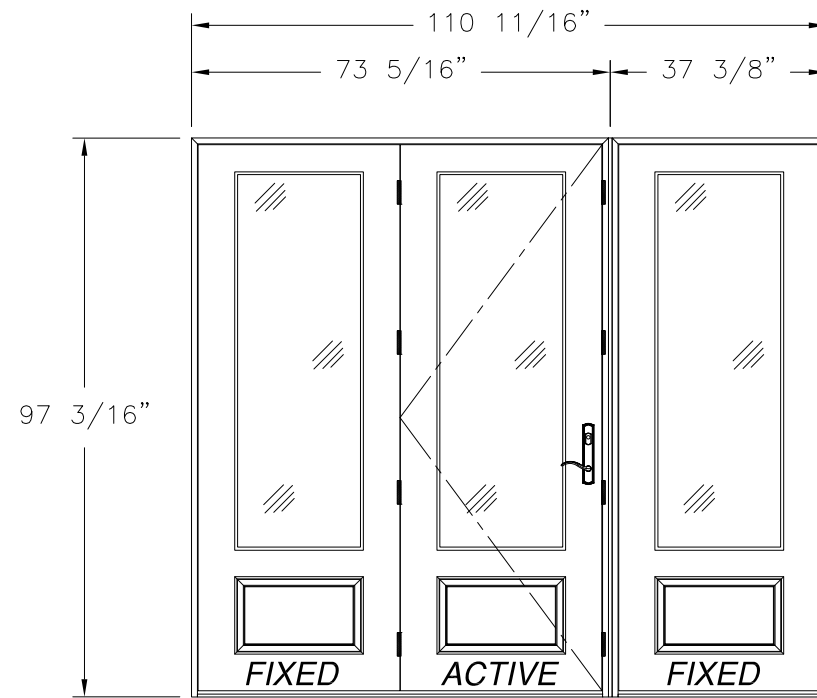


DOUBLE
EXTERIOR VIEW

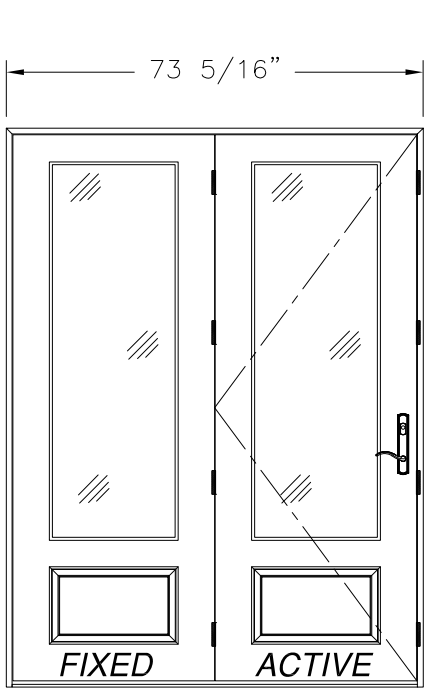
REVISIONS			
REV	DESCRIPTION	DATE	APPROVED
A	REVISED TO ADD 3/4 LITE PANEL	02/10/2021	R.L.
B	REVISED TO ADD INSTALLATION DETAILS	03/14/2022	R.L.



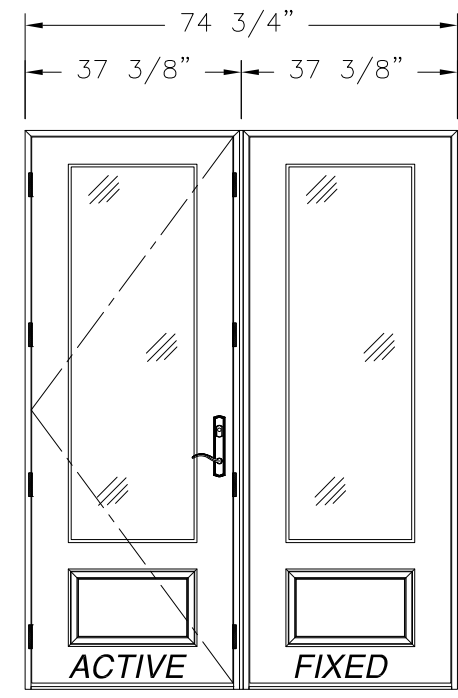
SINGLE
EXTERIOR VIEW



SINGLE W/SIDELITE (MULL)
EXTERIOR VIEW



SINGLE W/SIDELITE
EXTERIOR VIEW



SINGLE W/SIDELITE (MULL)
EXTERIOR VIEW

NOTE:
ALL APPROVED CONFIGURATIONS ARE SHOWN AS LEFT
HAND ACTIVE, RIGHT HAND ACTIVE IS ALSO APPROVED.

SIGNED: 03/25/2022

NAN YA PLASTICS CORPORATION U.S.A.
8989 NORTH LOOP EAST
HOUSTON, TX 77029

SERIES "SLPS LITE" GLAZED FIBERGLASS OUTSWING
SIDE-HINGED DOOR W/SIDELITES NON-IMPACT
APPROVED CONFIGURATIONS 3/4 LITE PANEL

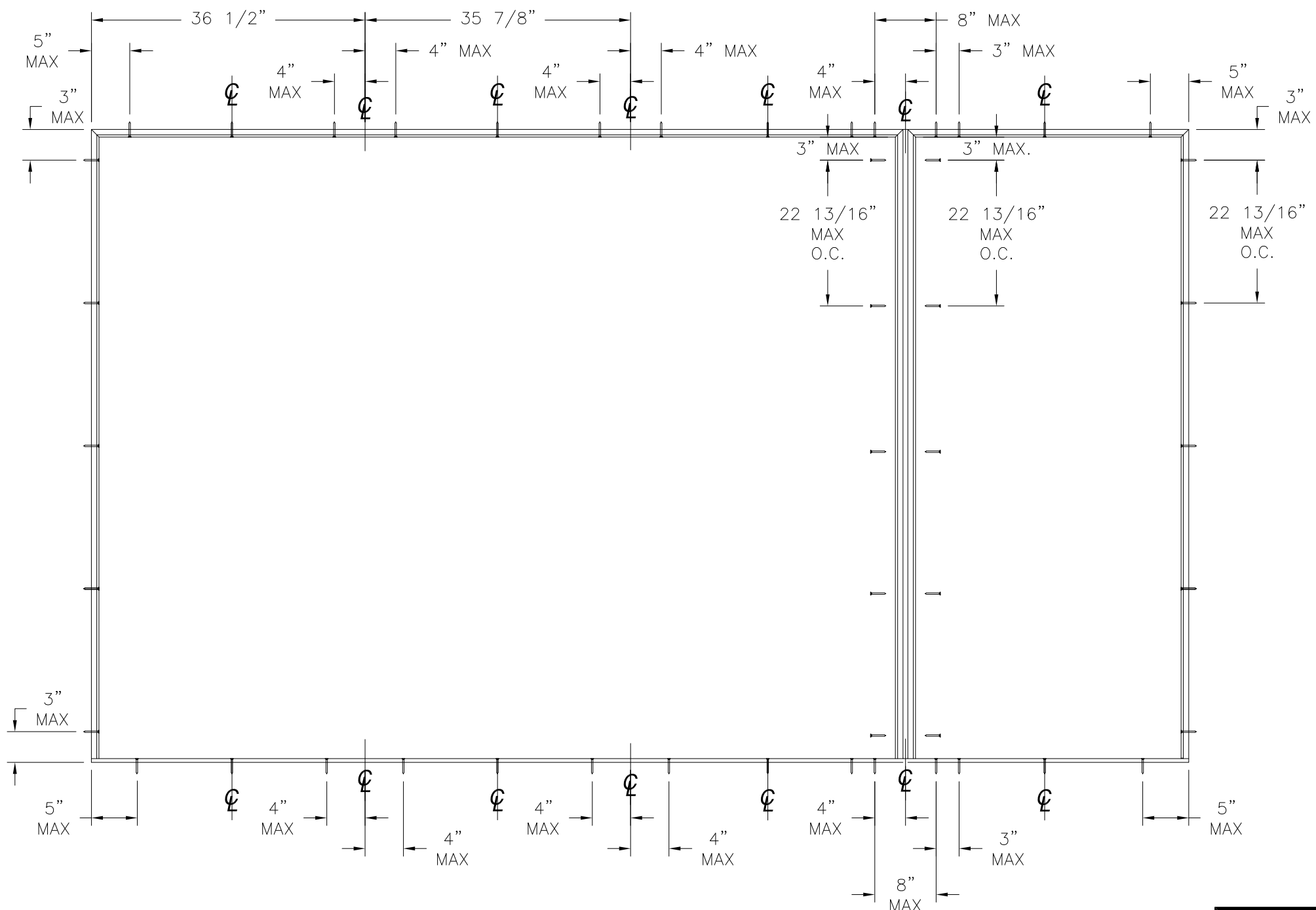
DRAWN: A.R.	DWG NO. 08-03310	REV B
SCALE NTS	DATE 09/27/18	SHEET 4 OF 17

L. ROBERTO LOMAS P.E.
400 S. PALM AVE, INDIALANTIC, FL 32903
434-688-0609 rllomas@rlomaspe.com



Luis R. Lomas P.E.
TX No.: 101889
Firm No: F-23130

REVISIONS			
REV	DESCRIPTION	DATE	APPROVED
A	REVISED TO ADD 3/4 LITE PANEL	02/10/2021	R.L.
B	REVISED TO ADD INSTALLATION DETAILS	03/14/2022	R.L.



ANCHORING LAYOUT

SIGNED: 03/25/2022

NAN YA PLASTICS CORPORATION U.S.A.
 8989 NORTH LOOP EAST
 HOUSTON, TX 77029

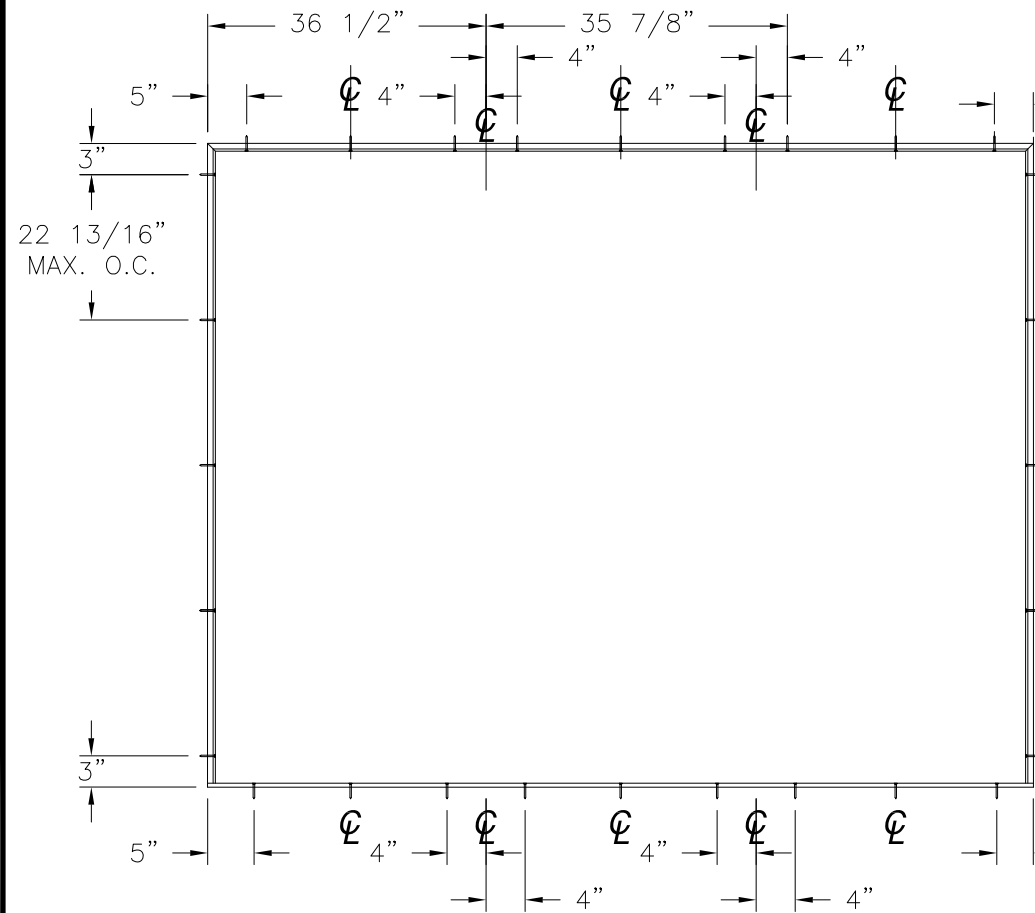
SERIES "SLPS LITE" GLAZED FIBERGLASS OUTSWING
 SIDE-HINGED DOOR W/SIDELITES NON-IMPACT
 ANCHORING LAYOUT

DRAWN: A.R.	DWG NO. 08-03310	REV B
SCALE NTS	DATE 09/27/18	SHEET 5 OF 17

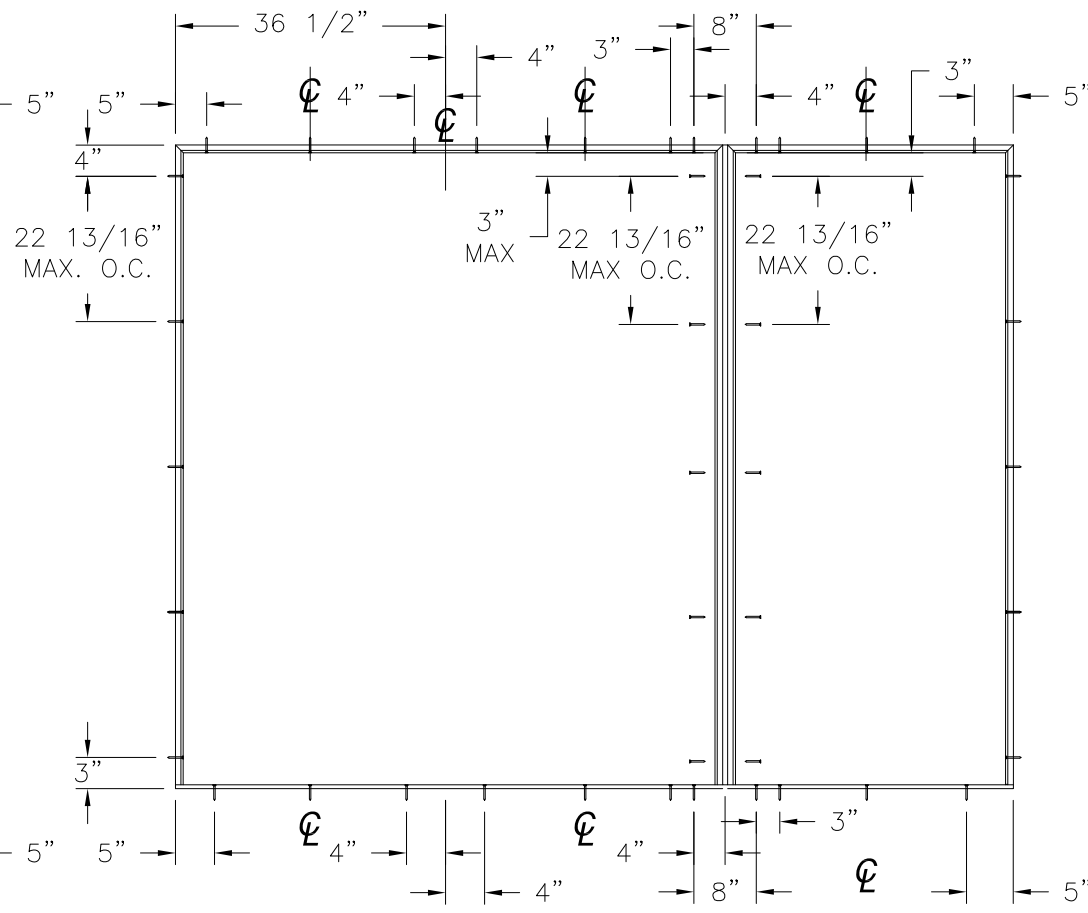
L. ROBERTO LOMAS P.E.
 400 S. PALM AVE, INDIALANTIC, FL 32903
 434-688-0609 rllomas@rlomaspe.com



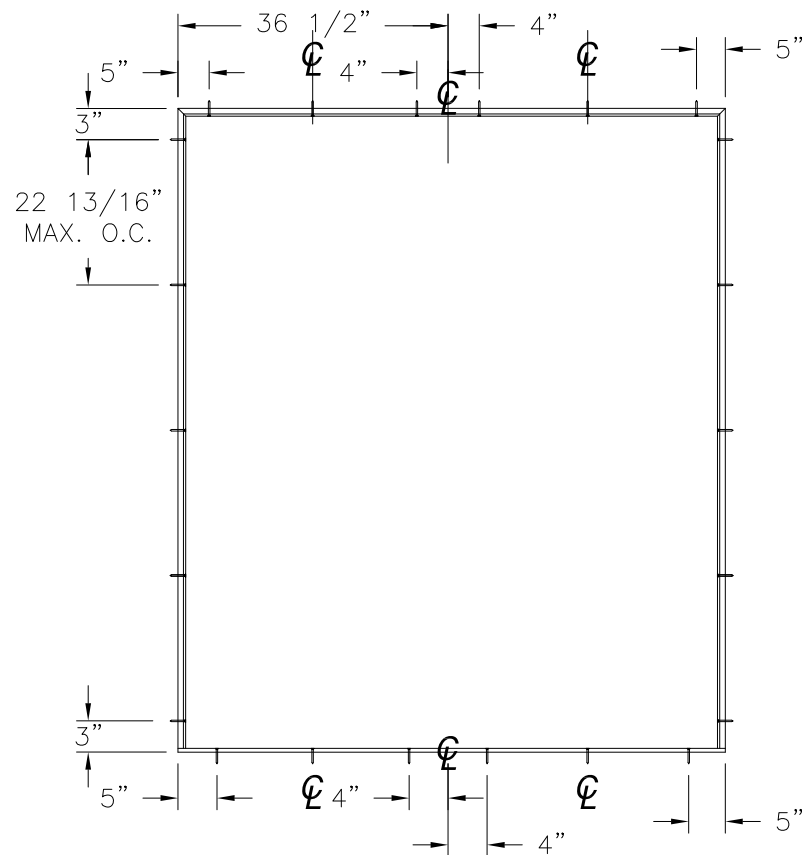
Luis R. Lomas P.E.
 TX No.: 101889
 Firm No: F-23130



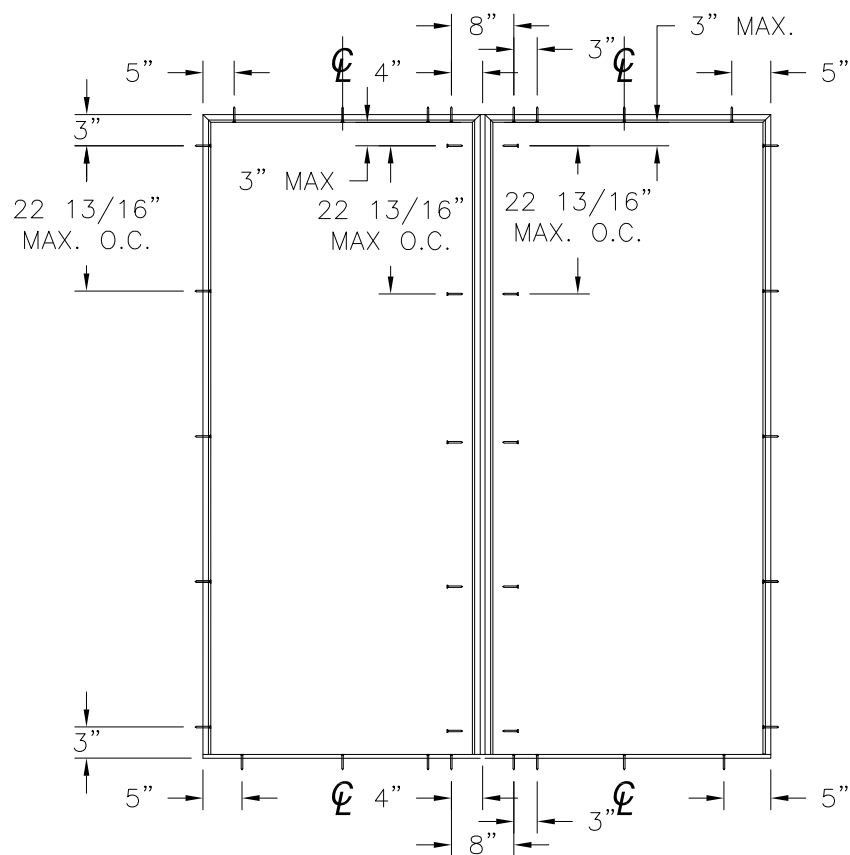
ANCHORING LAYOUT FOR OXO, XXO AND OXX



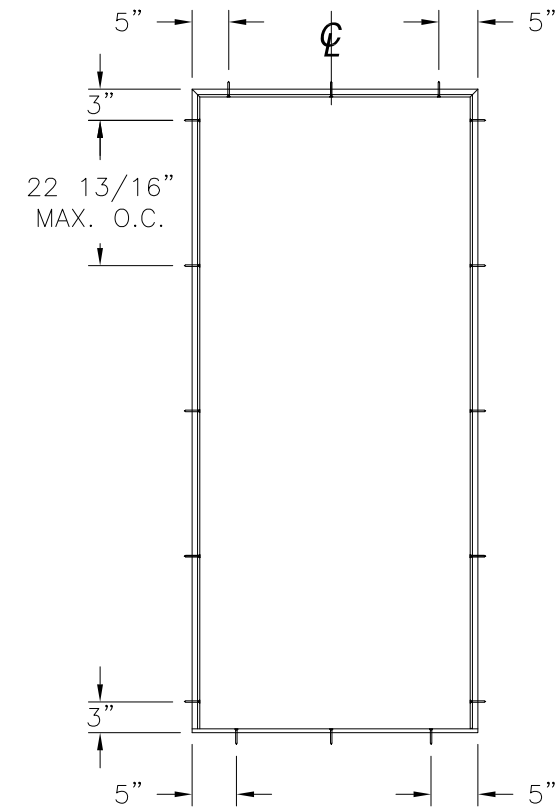
ANCHORING LAYOUT FOR OXO, XXO AND OXX (MULL)



ANCHORING LAYOUT FOR XX, OX AND XO



ANCHORING LAYOUT FOR OX AND XO (MULL)



ANCHORING LAYOUT FOR X

REVISIONS			
REV	DESCRIPTION	DATE	APPROVED
A	REVISED TO ADD 3/4 LITE PANEL	02/10/2021	R.L.
B	REVISED TO ADD INSTALLATION DETAILS	03/14/2022	R.L.

SIGNED: 03/25/2022

NAN YA PLASTICS CORPORATION U.S.A.
 8989 NORTH LOOP EAST
 HOUSTON, TX 77029

SERIES "SLPS LITE" GLAZED FIBERGLASS OUTSWING
 SIDE-HINGED DOOR W/SIDELITES NON-IMPACT
 ANCHORING LAYOUTS

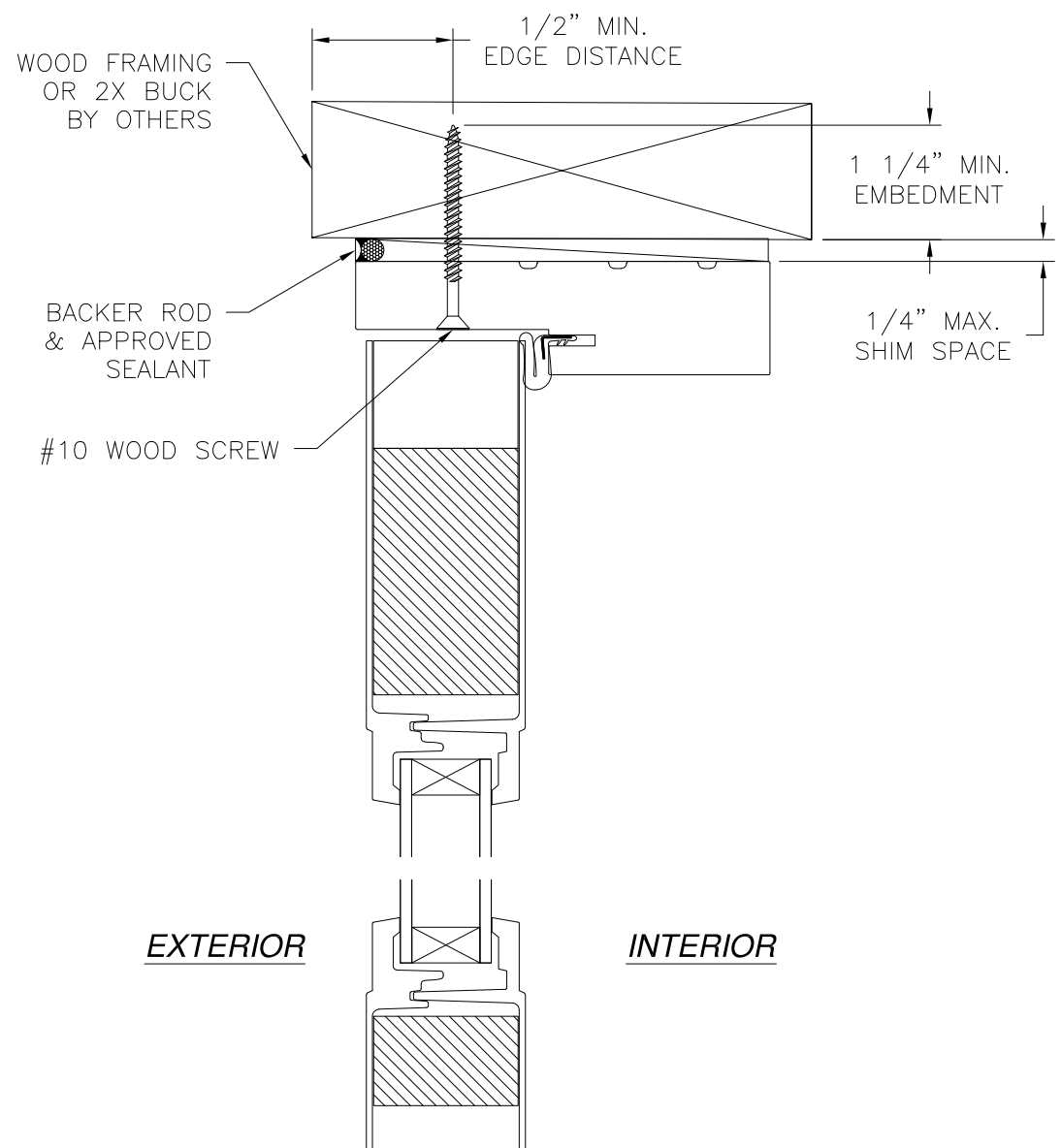
DRAWN: A.R.	DWG NO. 08-03310	REV B
SCALE NTS	DATE 09/27/18	SHEET 6 OF 17

L. ROBERTO LOMAS P.E.
 400 S. PALM AVE, INDIALANTIC, FL 32903
 434-688-0609 rllomas@rlomaspe.com

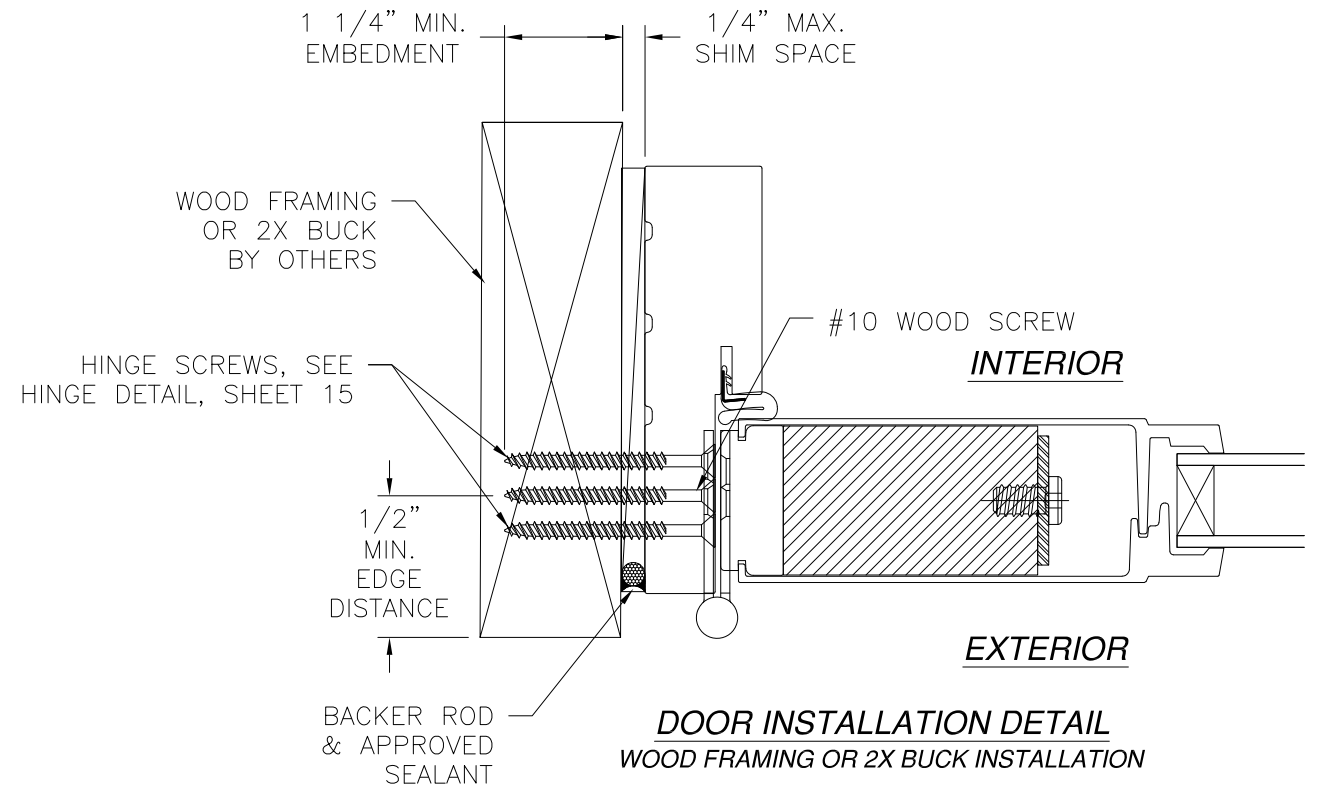


Luis R. Lomas P.E.
 TX No.: 101889
 Firm No: F-23130

REVISIONS			
REV	DESCRIPTION	DATE	APPROVED
A	REVISED TO ADD 3/4 LITE PANEL	02/10/2021	R.L.
B	REVISED TO ADD INSTALLATION DETAILS	03/14/2022	R.L.

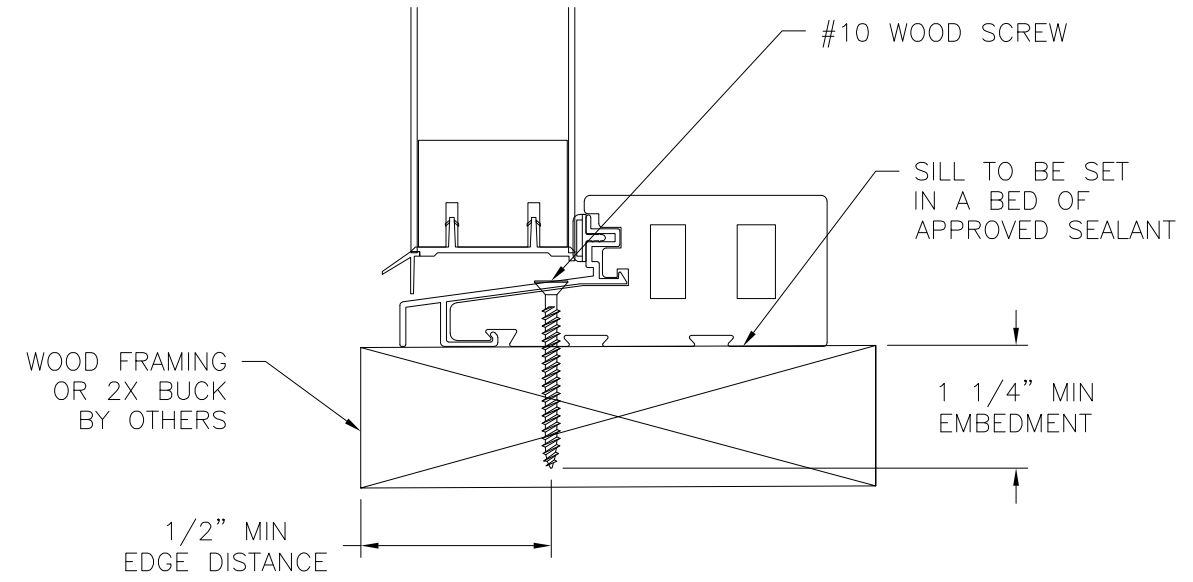


EXTERIOR **INTERIOR**



DOOR INSTALLATION DETAIL
WOOD FRAMING OR 2X BUCK INSTALLATION

- NOTES:**
1. INTERIOR AND EXTERIOR FINISHES, BY OTHERS, NOT SHOWN FOR CLARITY.
 2. PERIMETER AND JOINT SEALANT BY OTHERS TO BE DESIGNED IN ACCORDANCE WITH ASTM E2112



DOOR INSTALLATION DETAIL
2X BUCK/WOOD FRAMING INSTALLATION

SIGNED: 03/25/2022

NAN YA PLASTICS CORPORATION U.S.A.
8989 NORTH LOOP EAST
HOUSTON, TX 77029

SERIES "SLPS LITE" GLAZED FIBERGLASS OUTSWING
SIDE-HINGED DOOR W/SIDELITES NON-IMPACT
DOOR INSTALLATION DETAILS

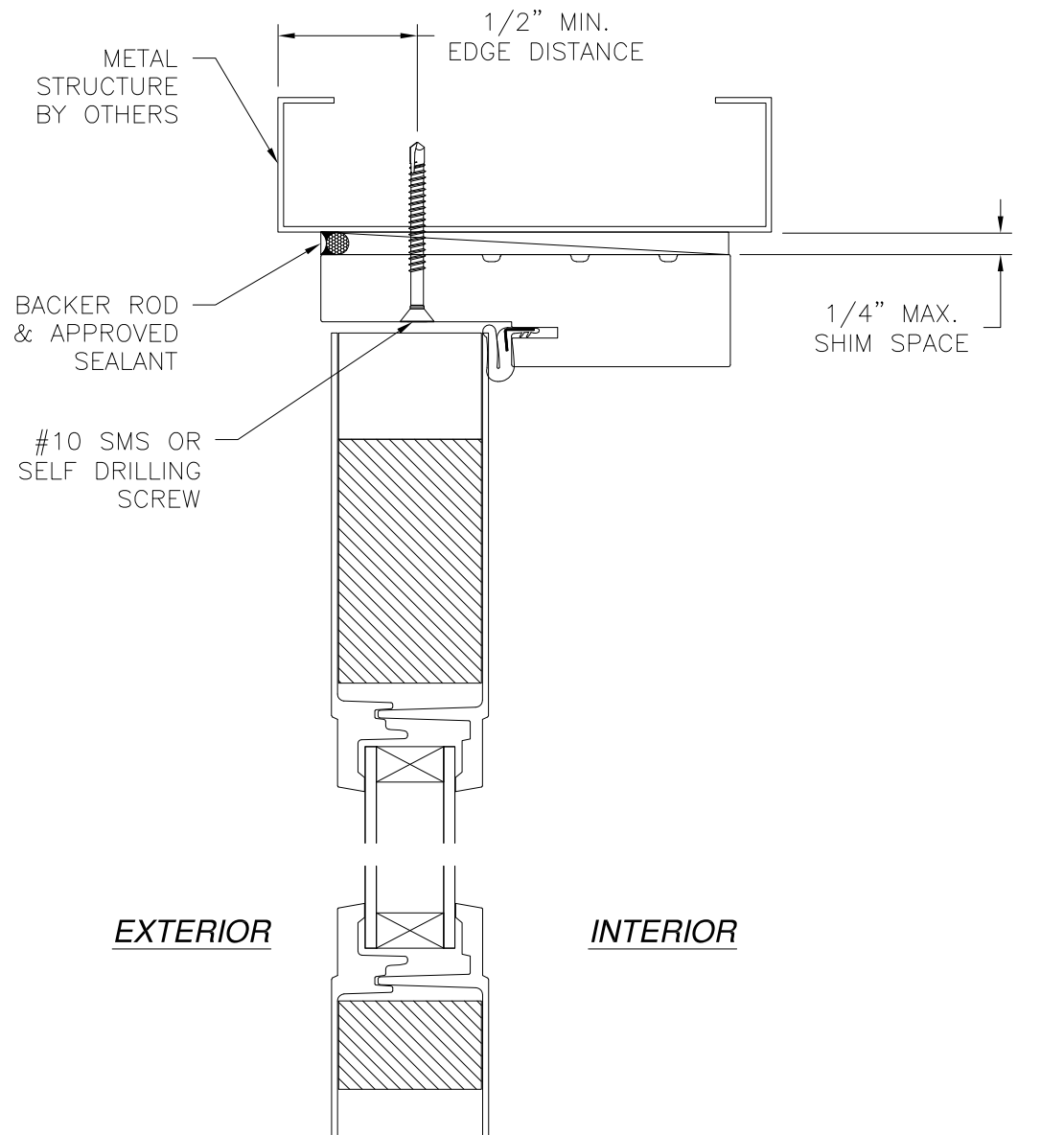
DRAWN: A.R.	DWG NO. 08-03310	REV B
SCALE NTS	DATE 09/27/18	SHEET 7 OF 17

L. ROBERTO LOMAS P.E.
400 S. PALM AVE, INDIALANTIC, FL 32903
434-688-0609 rllomas@rlomaspe.com

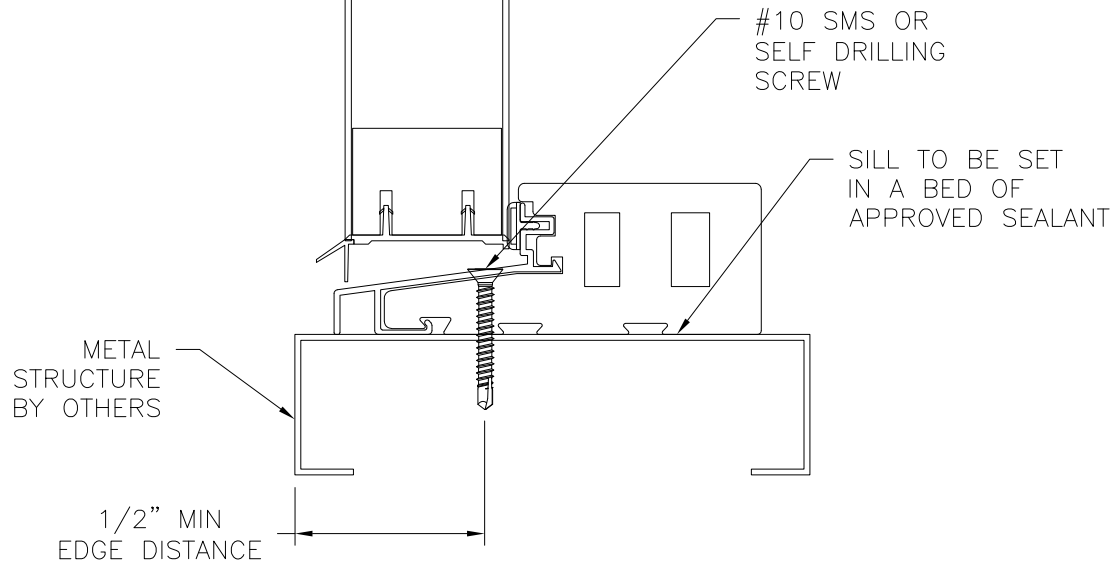


Luis R. Lomas P.E.
TX No.: 101889
Firm No: F-23130

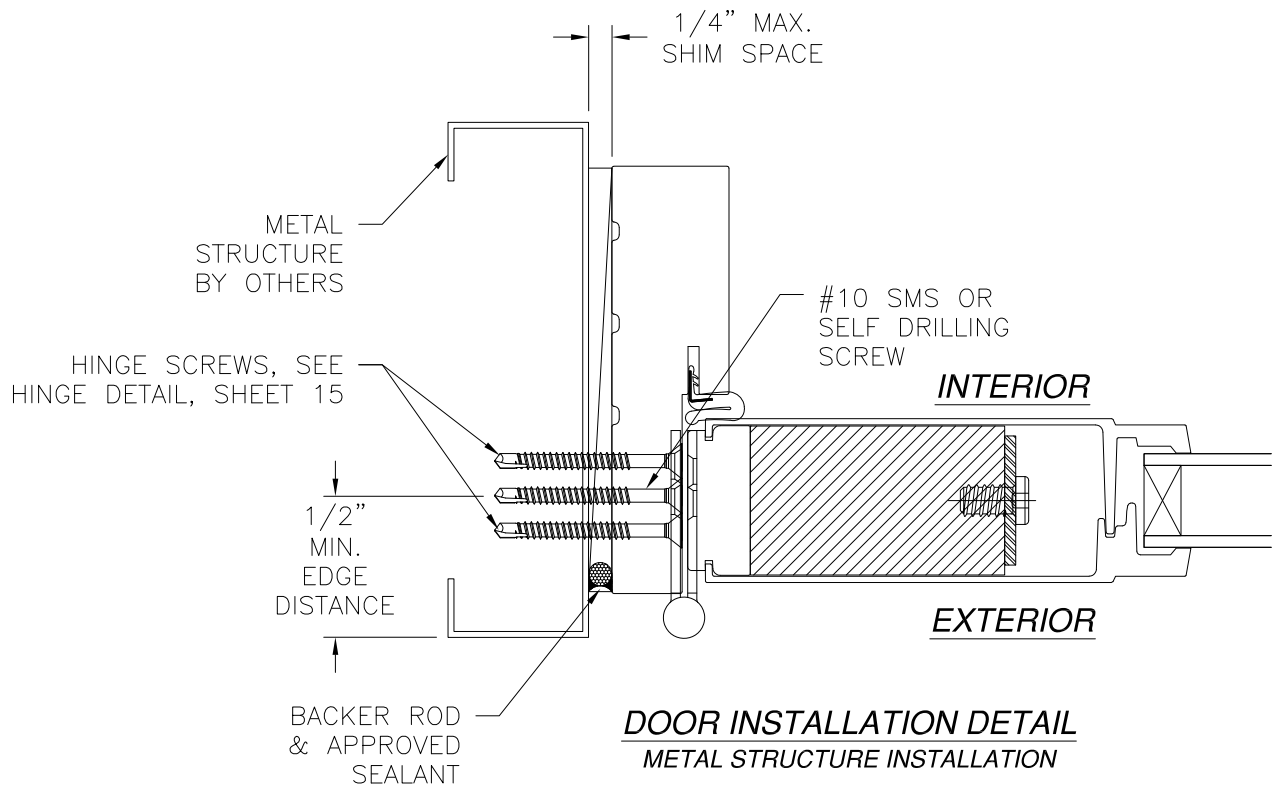
REVISIONS			
REV	DESCRIPTION	DATE	APPROVED
A	REVISED TO ADD 3/4 LITE PANEL	02/10/2021	R.L.
B	REVISED TO ADD INSTALLATION DETAILS	03/14/2022	R.L.



EXTERIOR *INTERIOR*



DOOR INSTALLATION DETAIL
METAL STRUCTURE INSTALLATION



DOOR INSTALLATION DETAIL
METAL STRUCTURE INSTALLATION

NOTES:

1. INTERIOR AND EXTERIOR FINISHES, BY OTHERS, NOT SHOWN FOR CLARITY.
2. PERIMETER AND JOINT SEALANT BY OTHERS TO BE DESIGNED IN ACCORDANCE WITH ASTM E2112

SIGNED: 03/25/2022

NAN YA PLASTICS CORPORATION U.S.A.
8989 NORTH LOOP EAST
HOUSTON, TX 77029

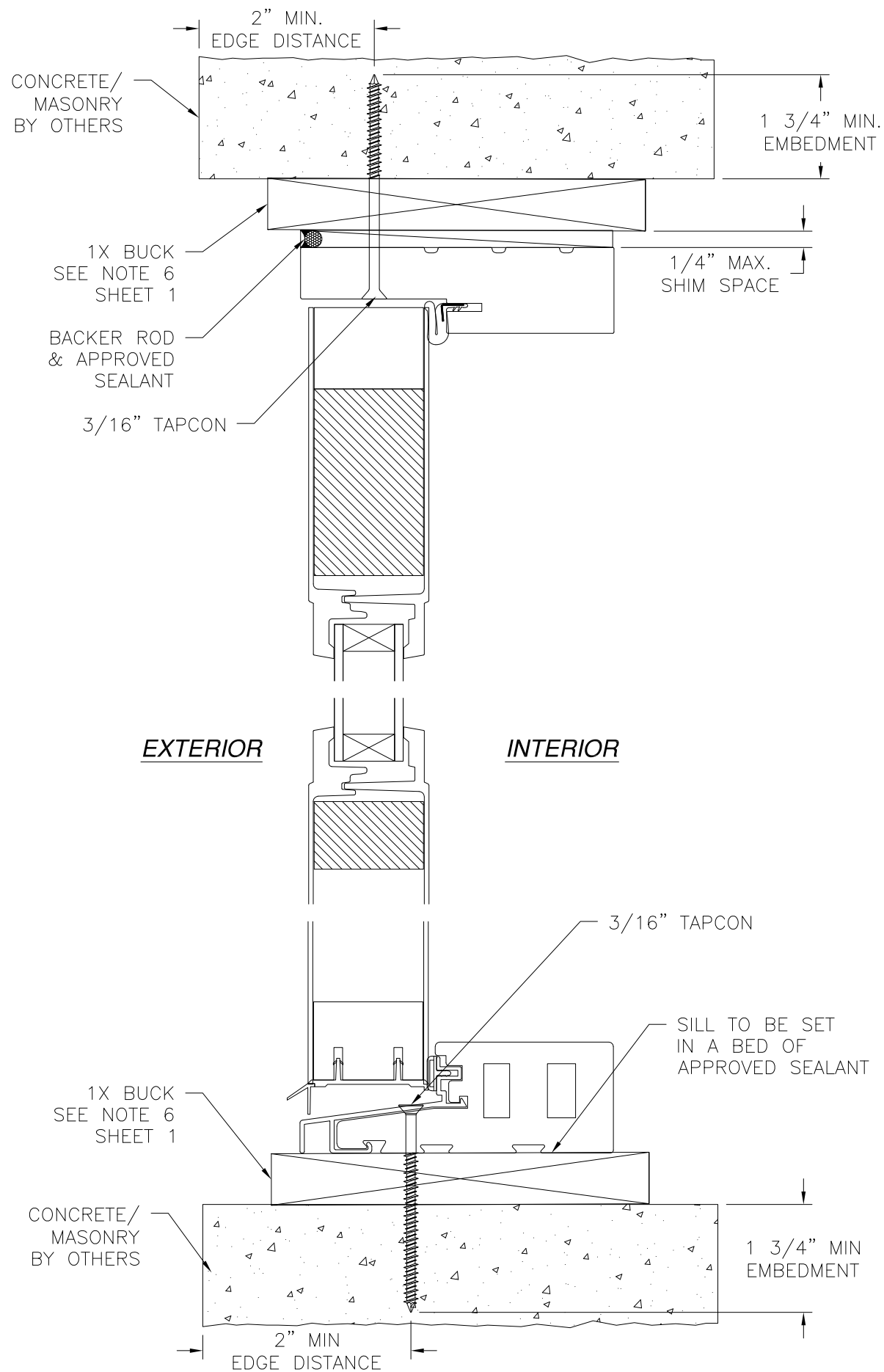
SERIES "SLPS LITE" GLAZED FIBERGLASS OUTSWING
SIDE-HINGED DOOR W/SIDELITES NON-IMPACT
DOOR INSTALLATION DETAILS

DRAWN: A.R.	DWG NO. 08-03310	REV B
SCALE NTS	DATE 09/27/18	SHEET 8 OF 17

L. ROBERTO LOMAS P.E.
400 S. PALM AVE, INDIALANTIC, FL 32903
434-688-0609 rllomas@rlomaspe.com



Luis R. Lomas P.E.
TX No.: 101889
Firm No: F-23130

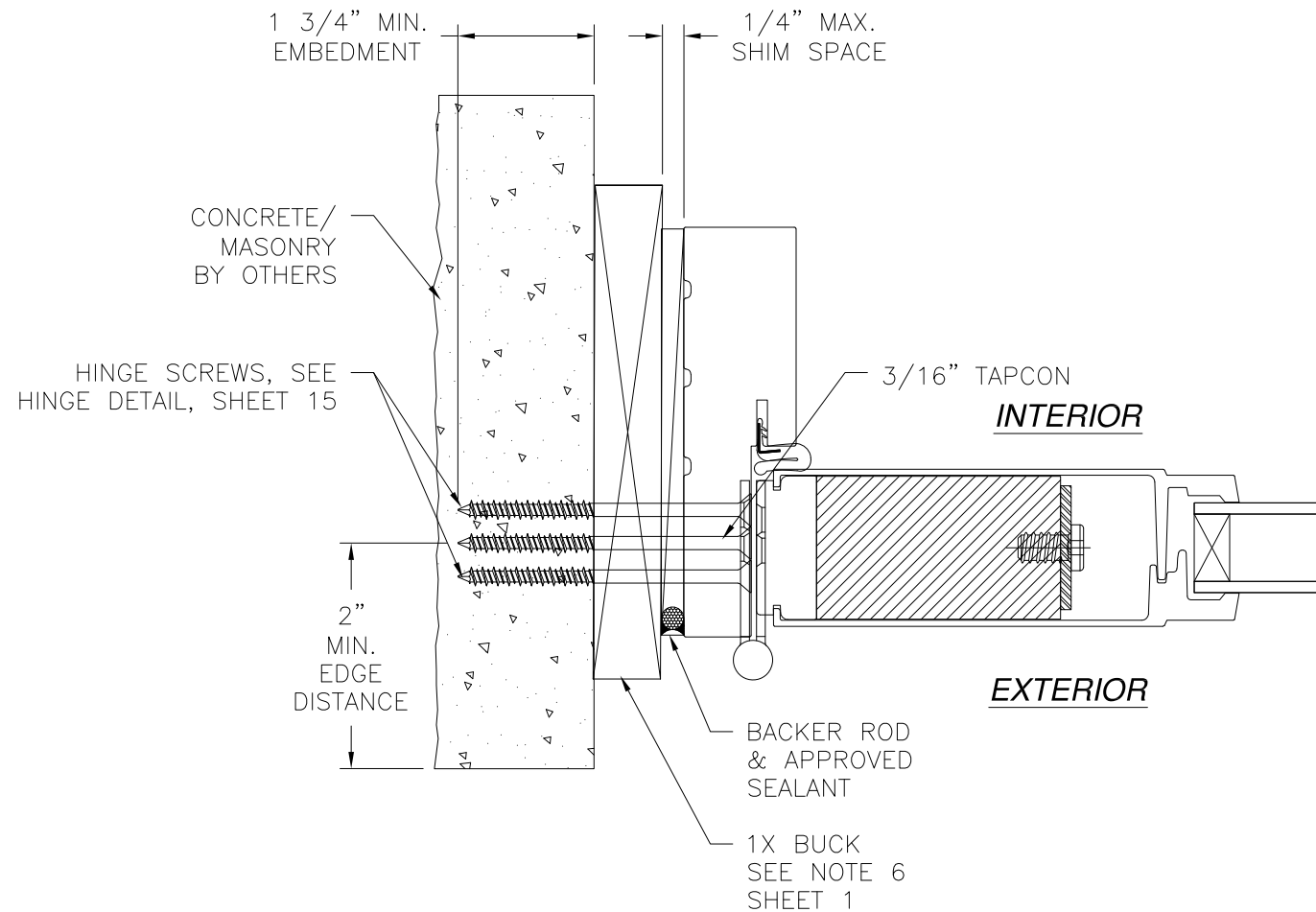


EXTERIOR

INTERIOR

DOOR INSTALLATION DETAIL
CONCRETE/MASONRY W/1X BUCK INSTALLATION

REVISIONS			
REV	DESCRIPTION	DATE	APPROVED
A	REVISED TO ADD 3/4 LITE PANEL	02/10/2021	R.L.
B	REVISED TO ADD INSTALLATION DETAILS	03/14/2022	R.L.



INTERIOR

EXTERIOR

DOOR INSTALLATION DETAIL
CONCRETE/MASONRY W/1X BUCK INSTALLATION

NOTES:

1. INTERIOR AND EXTERIOR FINISHES, BY OTHERS, NOT SHOWN FOR CLARITY.
2. PERIMETER AND JOINT SEALANT BY OTHERS TO BE DESIGNED IN ACCORDANCE WITH ASTM E2112

SIGNED: 03/25/2022

NAN YA PLASTICS CORPORATION U.S.A.
8989 NORTH LOOP EAST
HOUSTON, TX 77029

SERIES "SLPS LITE" GLAZED FIBERGLASS OUTSWING
SIDE-HINGED DOOR W/SIDELITES NON-IMPACT
DOOR INSTALLATION DETAILS

DRAWN: A.R.	DWG NO. 08-03310	REV B
----------------	---------------------	----------

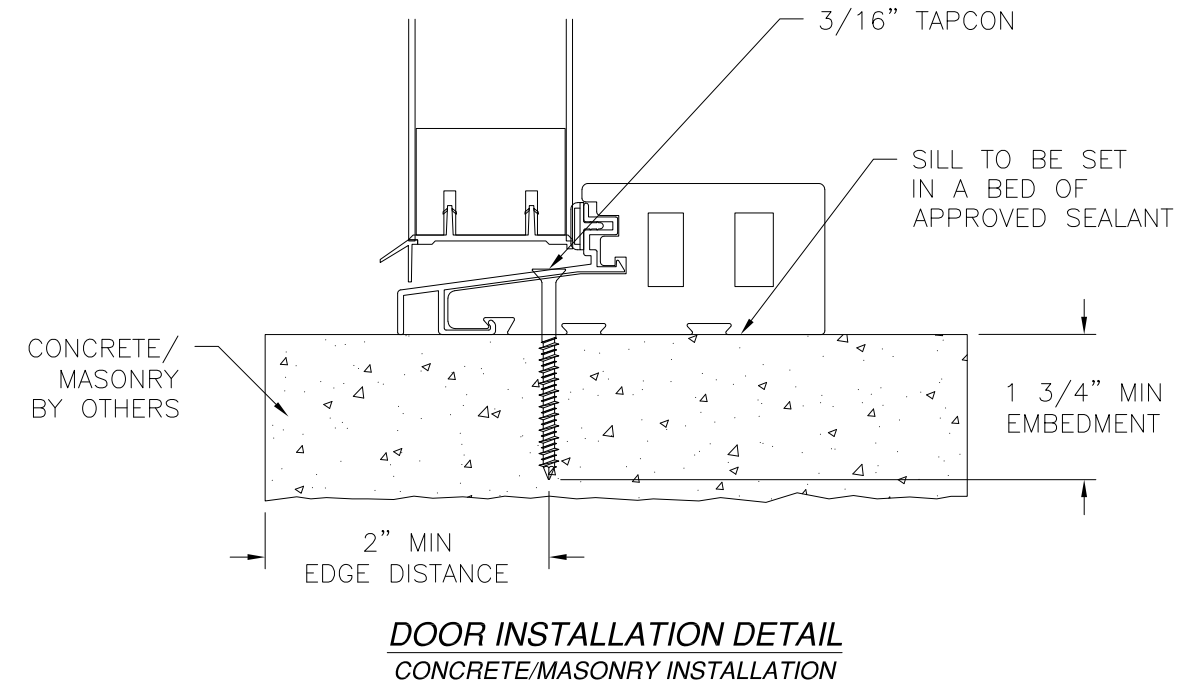
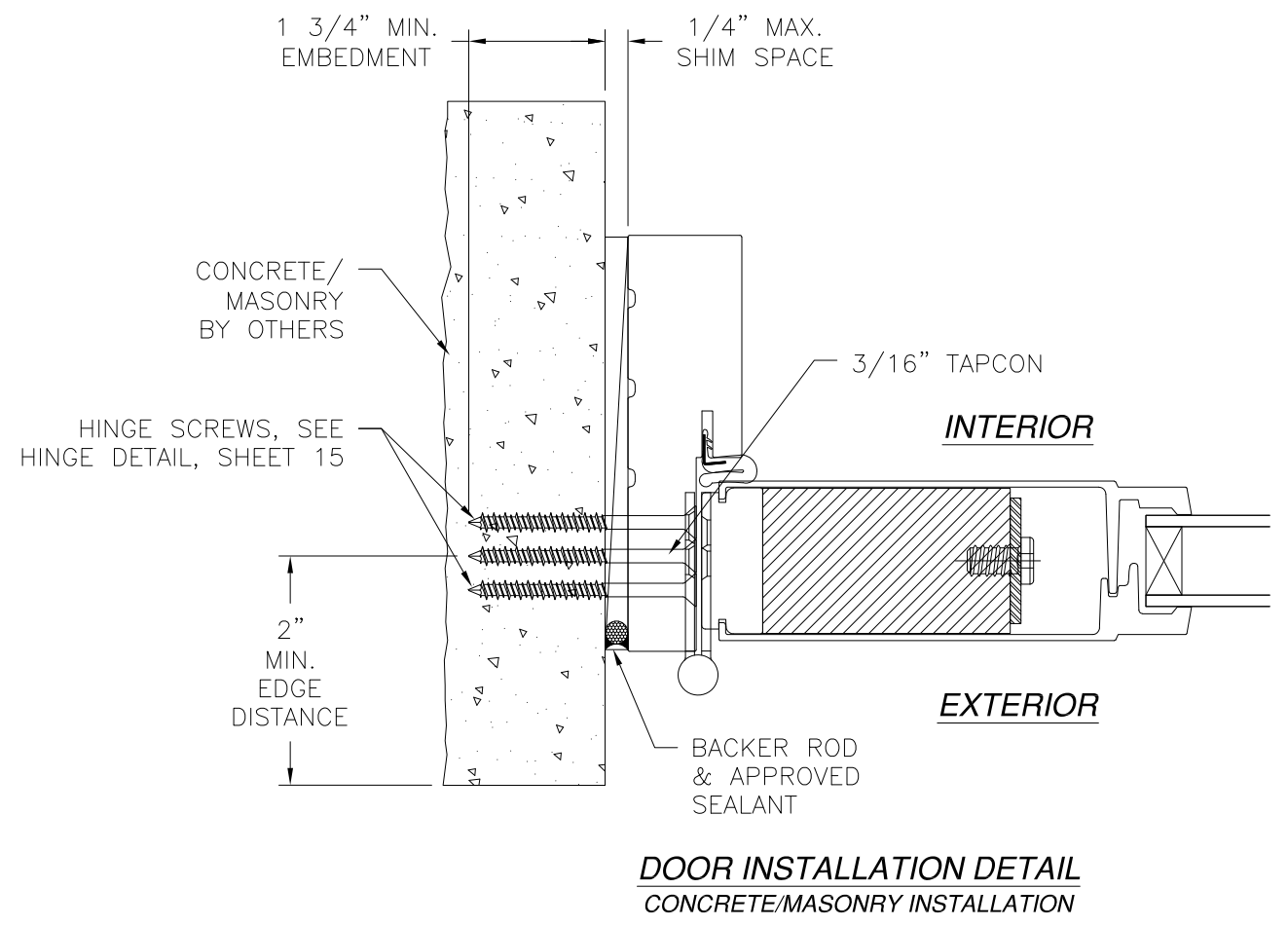
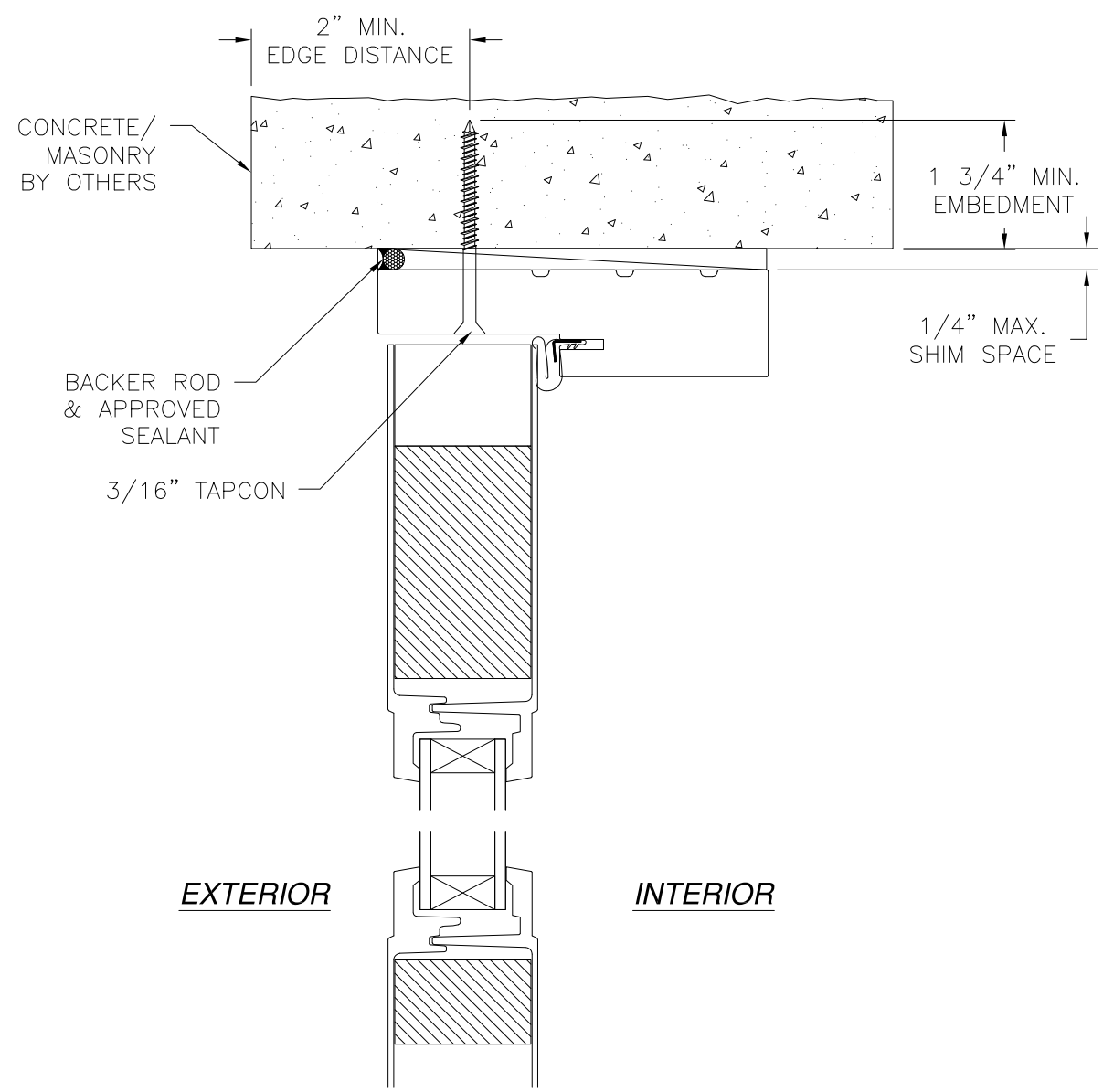
SCALE NTS	DATE 09/27/18	SHEET 9 OF 17
-----------	---------------	---------------

L. ROBERTO LOMAS P.E.
400 S. PALM AVE, INDIALANTIC, FL 32903
434-688-0609 rllomas@rlomaspe.com



Luis R. Lomas P.E.
TX No.: 101889
Firm No: F-23130

REVISIONS			
REV	DESCRIPTION	DATE	APPROVED
A	REVISED TO ADD 3/4 LITE PANEL	02/10/2021	R.L.
B	REVISED TO ADD INSTALLATION DETAILS	03/14/2022	R.L.



- NOTES:**
1. INTERIOR AND EXTERIOR FINISHES, BY OTHERS, NOT SHOWN FOR CLARITY.
 2. PERIMETER AND JOINT SEALANT BY OTHERS TO BE DESIGNED IN ACCORDANCE WITH ASTM E2112

SIGNED: 03/25/2022

NAN YA PLASTICS CORPORATION U.S.A.
8989 NORTH LOOP EAST
HOUSTON, TX 77029

SERIES "SLPS LITE" GLAZED FIBERGLASS OUTSWING
SIDE-HINGED DOOR W/SIDELITES NON-IMPACT
DOOR INSTALLATION DETAILS

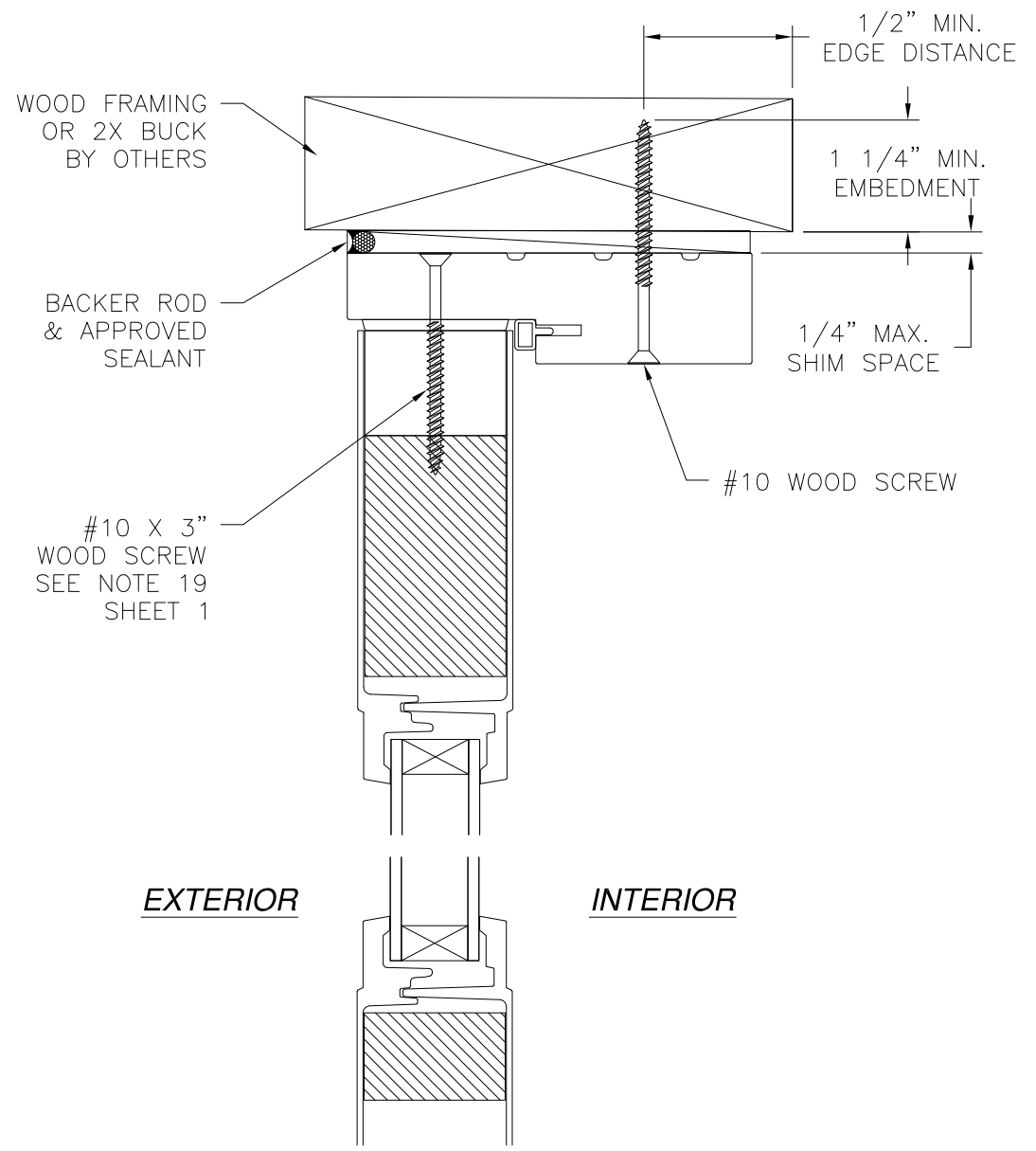
DRAWN: A.R.	DWG NO. 08-03310	REV B
SCALE NTS	DATE 09/27/18	SHEET 10 OF 17

L. ROBERTO LOMAS P.E.
400 S. PALM AVE, INDIALANTIC, FL 32903
434-688-0609 rllomas@rlomaspe.com



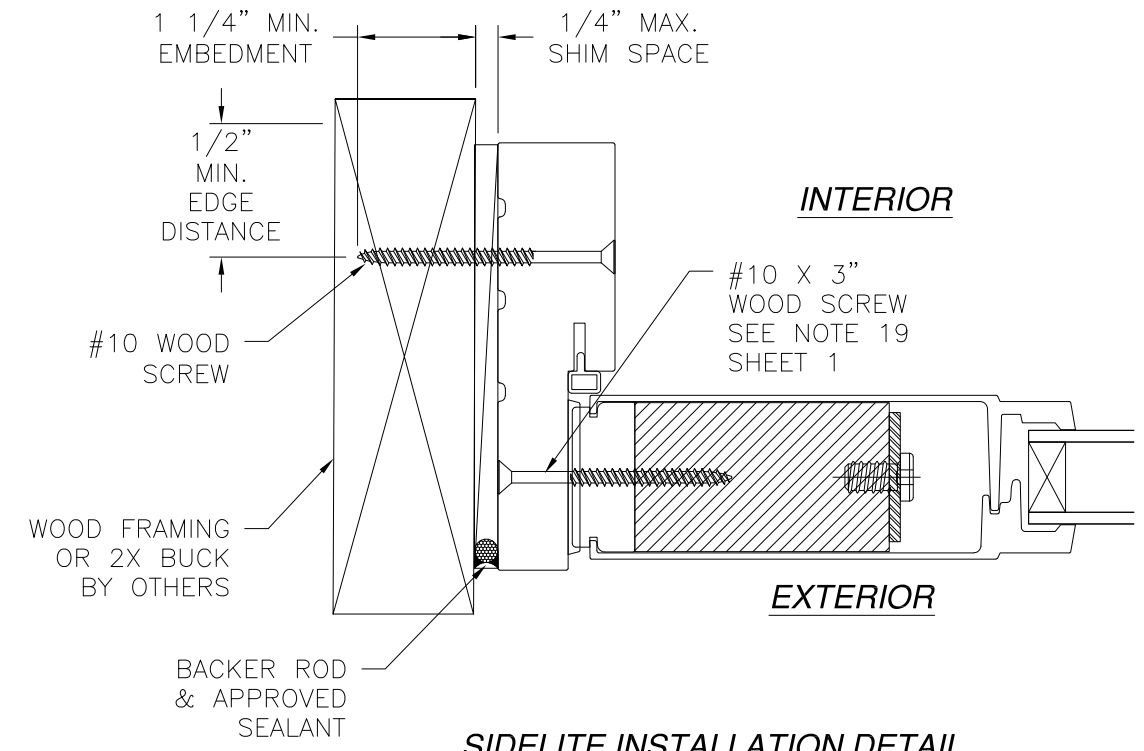
Luis R. Lomas P.E.
TX No.: 101889
Firm No: F-23130

REVISIONS			
REV	DESCRIPTION	DATE	APPROVED
A	REVISED TO ADD 3/4 LITE PANEL	02/10/2021	R.L.
B	REVISED TO ADD INSTALLATION DETAILS	03/14/2022	R.L.



EXTERIOR **INTERIOR**

SIDELITE DOOR INSTALLATION DETAIL
2X BUCK/WOOD FRAMING INSTALLATION



INTERIOR

EXTERIOR

SIDELITE INSTALLATION DETAIL
WOOD FRAMING OR 2X BUCK INSTALLATION

- NOTES:**
1. **INTERIOR AND EXTERIOR FINISHES, BY OTHERS, NOT SHOWN FOR CLARITY.**
 2. **PERIMETER AND JOINT SEALANT BY OTHERS TO BE DESIGNED IN ACCORDANCE WITH ASTM E2112**

SIGNED: 03/25/2022

NAN YA PLASTICS CORPORATION U.S.A.
8989 NORTH LOOP EAST
HOUSTON, TX 77029

SERIES "SLPS LITE" GLAZED FIBERGLASS OUTSWING
SIDE-HINGED DOOR W/SIDELITES NON-IMPACT
SIDELITE INSTALLATION DETAILS

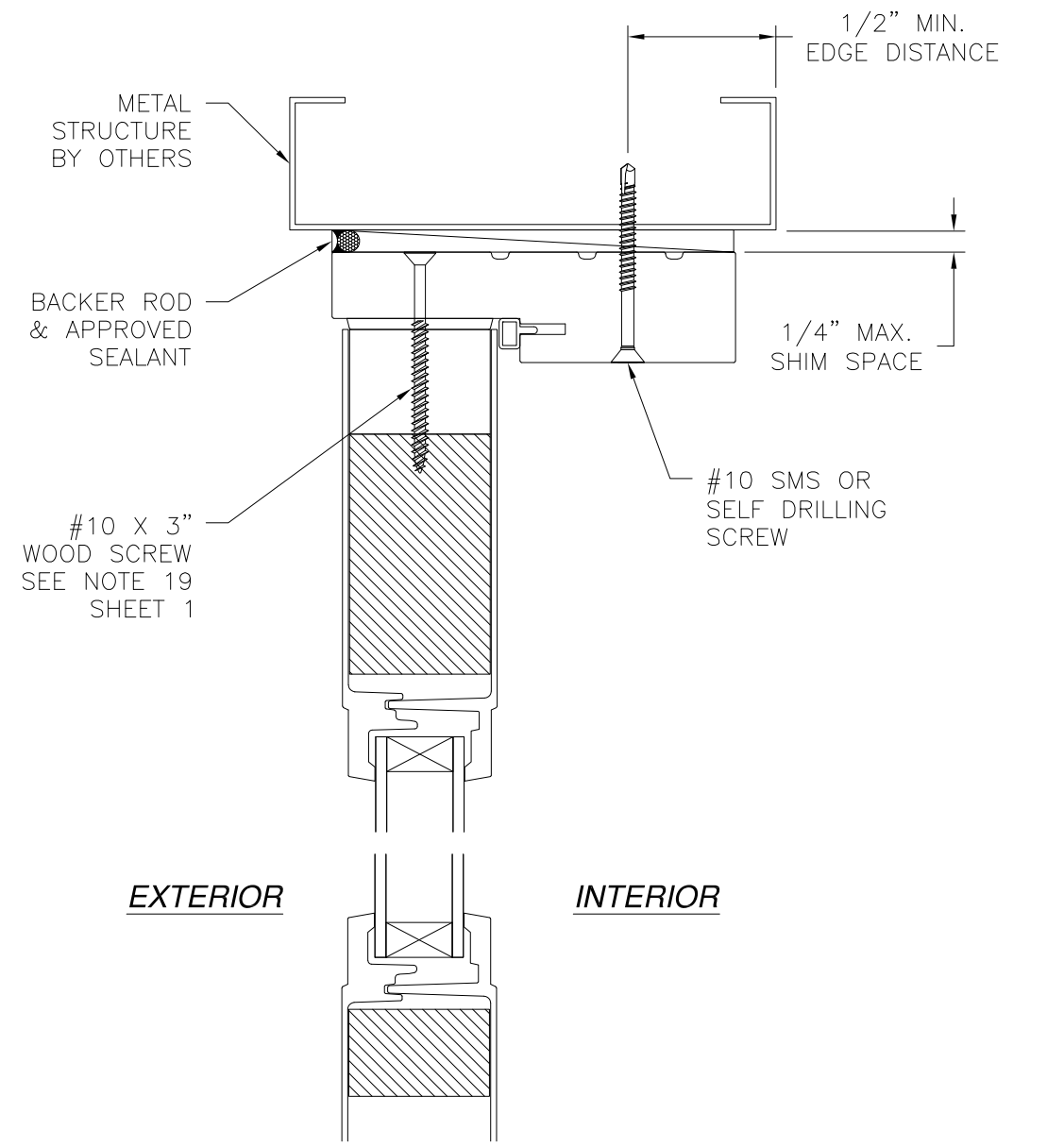
DRAWN: A.R.	DWG NO. 08-03310	REV B
SCALE NTS	DATE 09/27/18	SHEET 11 OF 17

L. ROBERTO LOMAS P.E.
400 S. PALM AVE, INDIALANTIC, FL 32903
434-688-0609 rllomas@rlomaspe.com

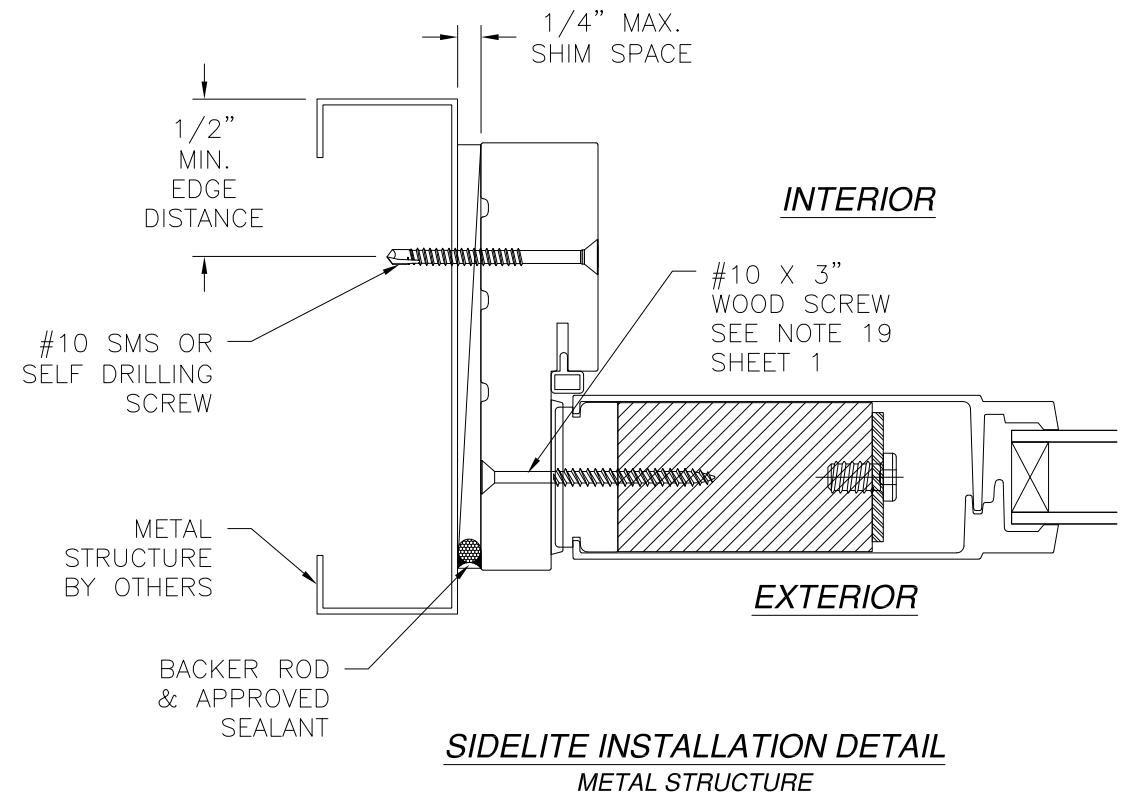


Luis R. Lomas P.E.
TX No.: 101889
Firm No: F-23130

REVISIONS			
REV	DESCRIPTION	DATE	APPROVED
A	REVISED TO ADD 3/4 LITE PANEL	02/10/2021	R.L.
B	REVISED TO ADD INSTALLATION DETAILS	03/14/2022	R.L.



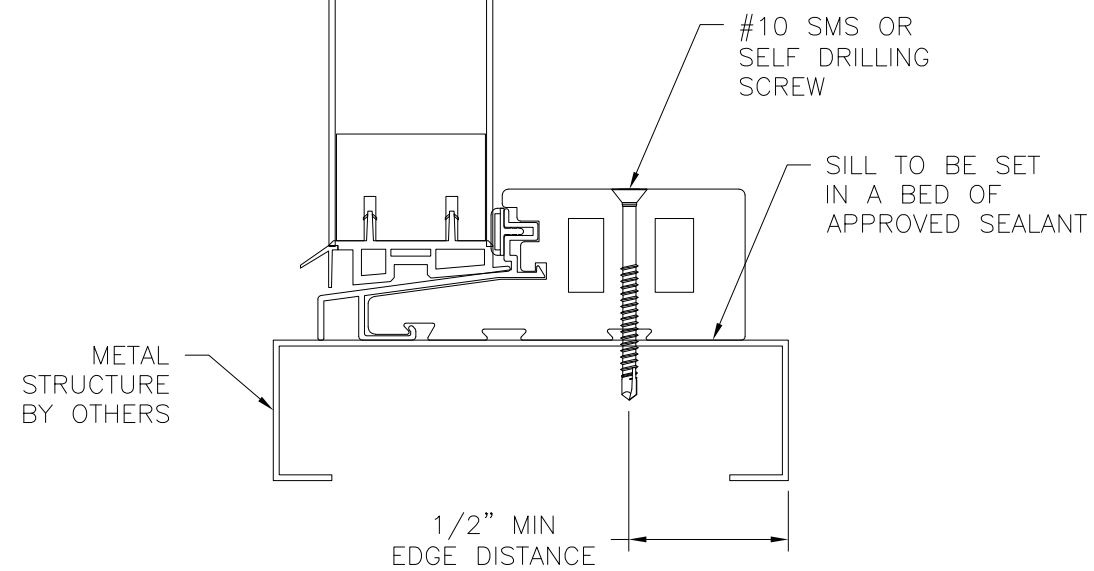
EXTERIOR **INTERIOR**



SIDELITE INSTALLATION DETAIL
METAL STRUCTURE

- NOTES:**
1. **INTERIOR AND EXTERIOR FINISHES, BY OTHERS, NOT SHOWN FOR CLARITY.**
 2. **PERIMETER AND JOINT SEALANT BY OTHERS TO BE DESIGNED IN ACCORDANCE WITH ASTM E2112**

SIGNED: 03/25/2022



SIDELITE DOOR INSTALLATION DETAIL
METAL STRUCTURE INSTALLATION

NAN YA PLASTICS CORPORATION U.S.A.
8989 NORTH LOOP EAST
HOUSTON, TX 77029

SERIES "SLPS LITE" GLAZED FIBERGLASS OUTSWING
SIDE-HINGED DOOR W/SIDELITES NON-IMPACT
SIDELITE INSTALLATION DETAILS

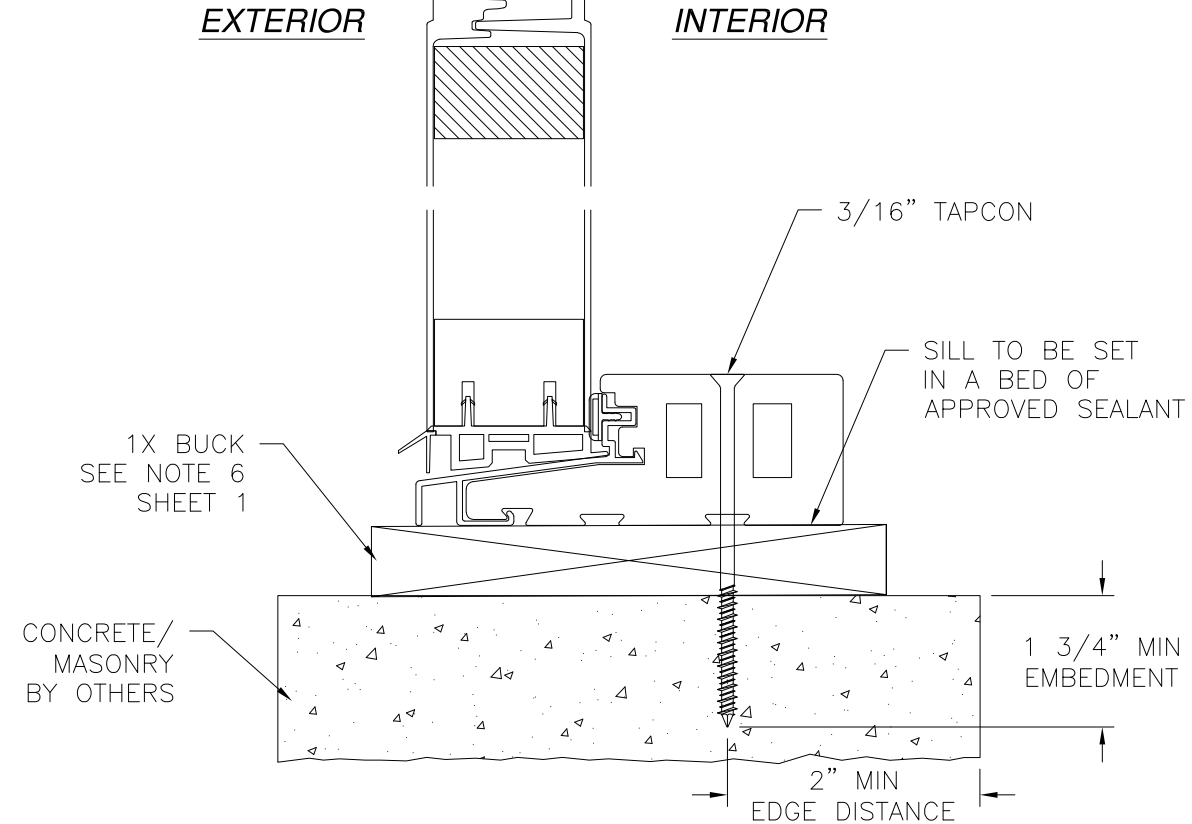
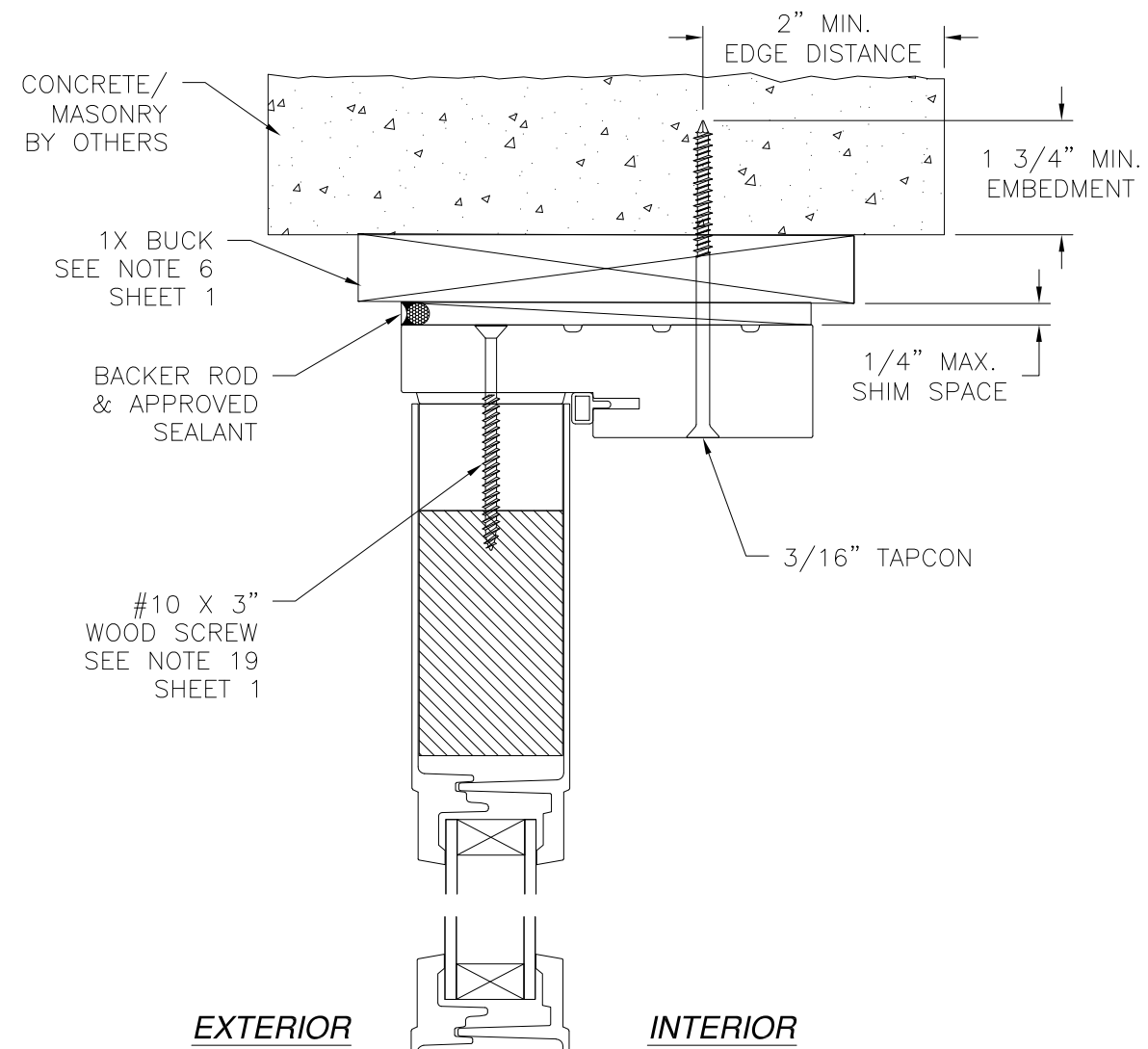
DRAWN: A.R.	DWG NO. 08-03310	REV B
SCALE NTS	DATE 09/27/18	SHEET 12 OF 17

L. ROBERTO LOMAS P.E.
400 S. PALM AVE, INDIALANTIC, FL 32903
434-688-0609 rllomas@rlomaspe.com

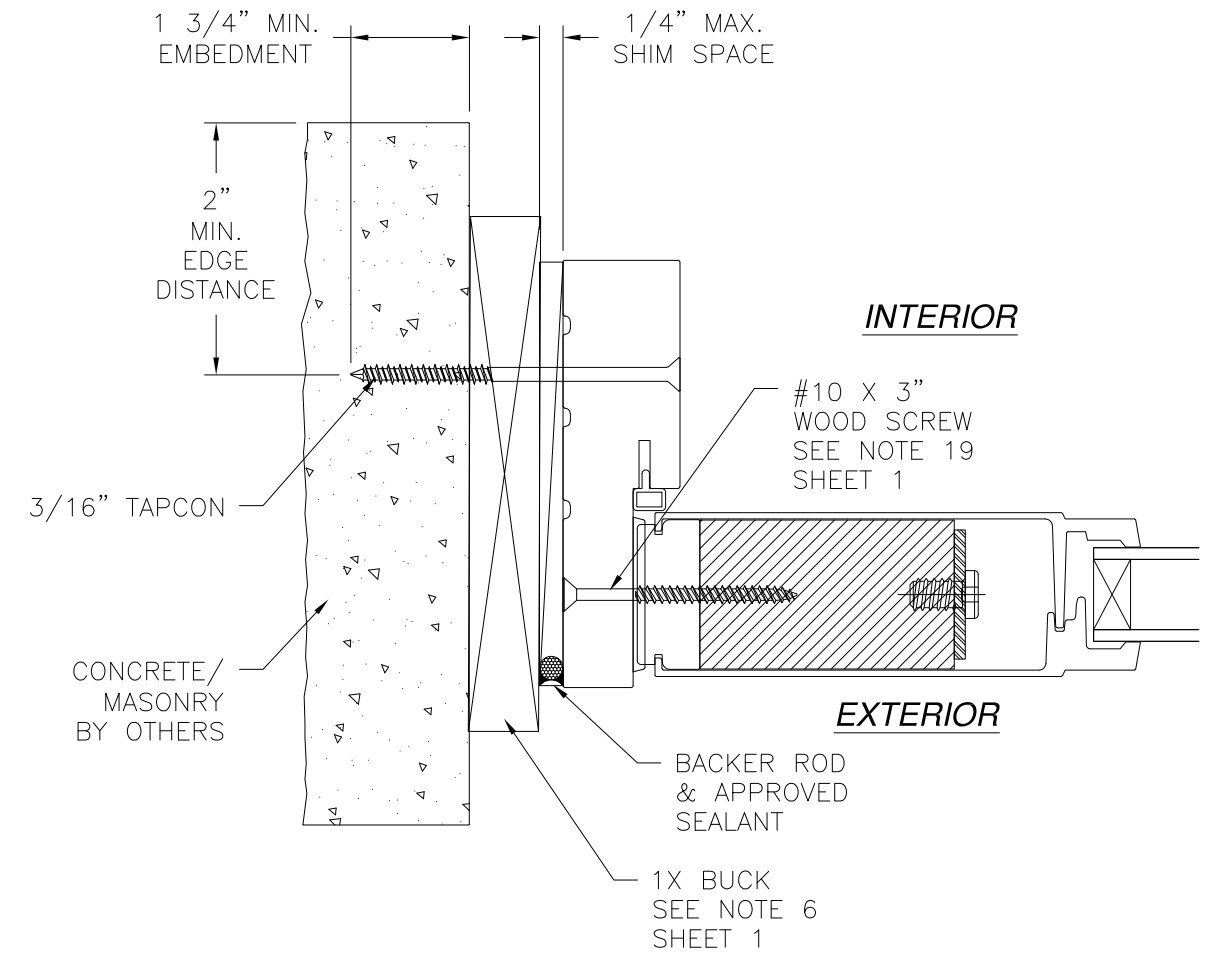


Luis R. Lomas P.E.
TX No.: 101889
Firm No: F-23130

REVISIONS			
REV	DESCRIPTION	DATE	APPROVED
A	REVISED TO ADD 3/4 LITE PANEL	02/10/2021	R.L.
B	REVISED TO ADD INSTALLATION DETAILS	03/14/2022	R.L.



SIDELITE DOOR INSTALLATION DETAIL
CONCRETE/MASONRY W/1X BUCK INSTALLATION



SIDELITE INSTALLATION DETAIL
CONCRETE/MASONRY/1X BUCK INSTALLATION

- NOTES:**
- INTERIOR AND EXTERIOR FINISHES, BY OTHERS, NOT SHOWN FOR CLARITY.
 - PERIMETER AND JOINT SEALANT BY OTHERS TO BE DESIGNED IN ACCORDANCE WITH ASTM E2112

SIGNED: 03/25/2022

NAN YA PLASTICS CORPORATION U.S.A.
8989 NORTH LOOP EAST
HOUSTON, TX 77029

SERIES "SLPS LITE" GLAZED FIBERGLASS OUTSWING
SIDE-HINGED DOOR W/SIDELITES NON-IMPACT
SIDELITE INSTALLATION DETAILS

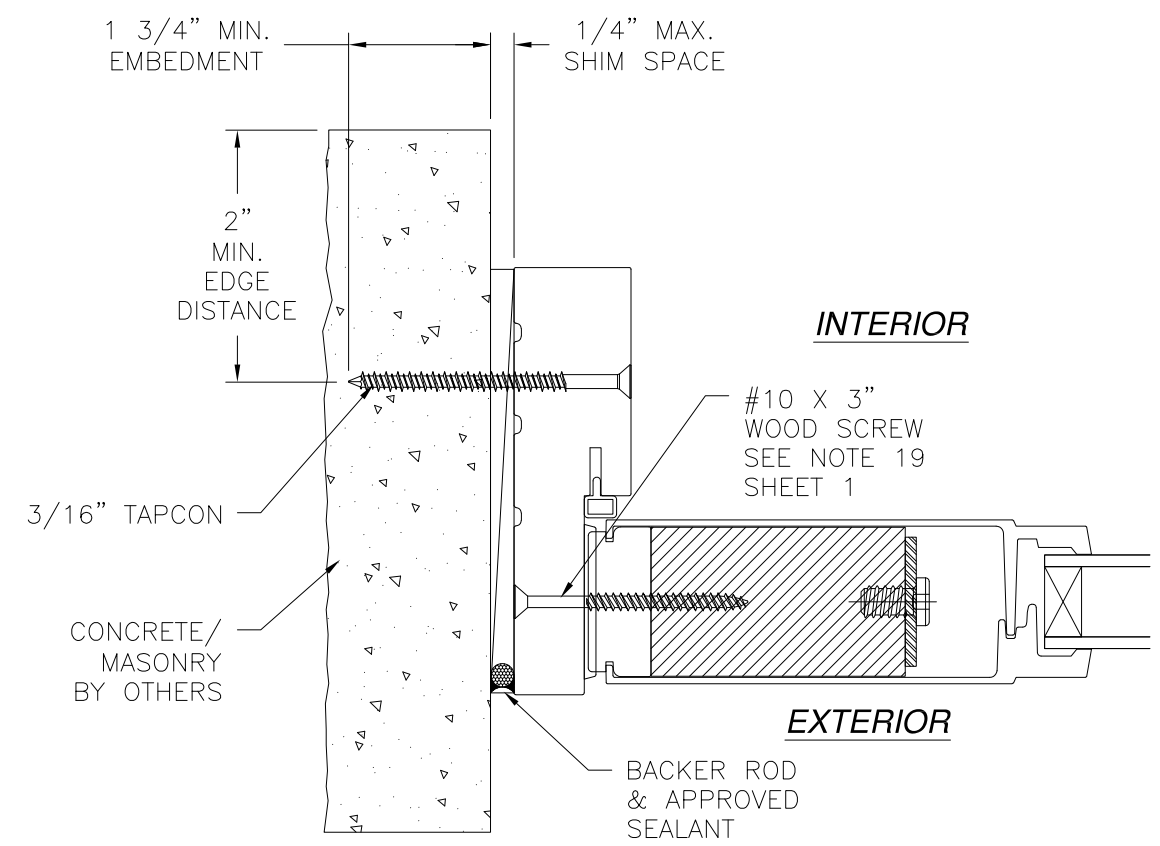
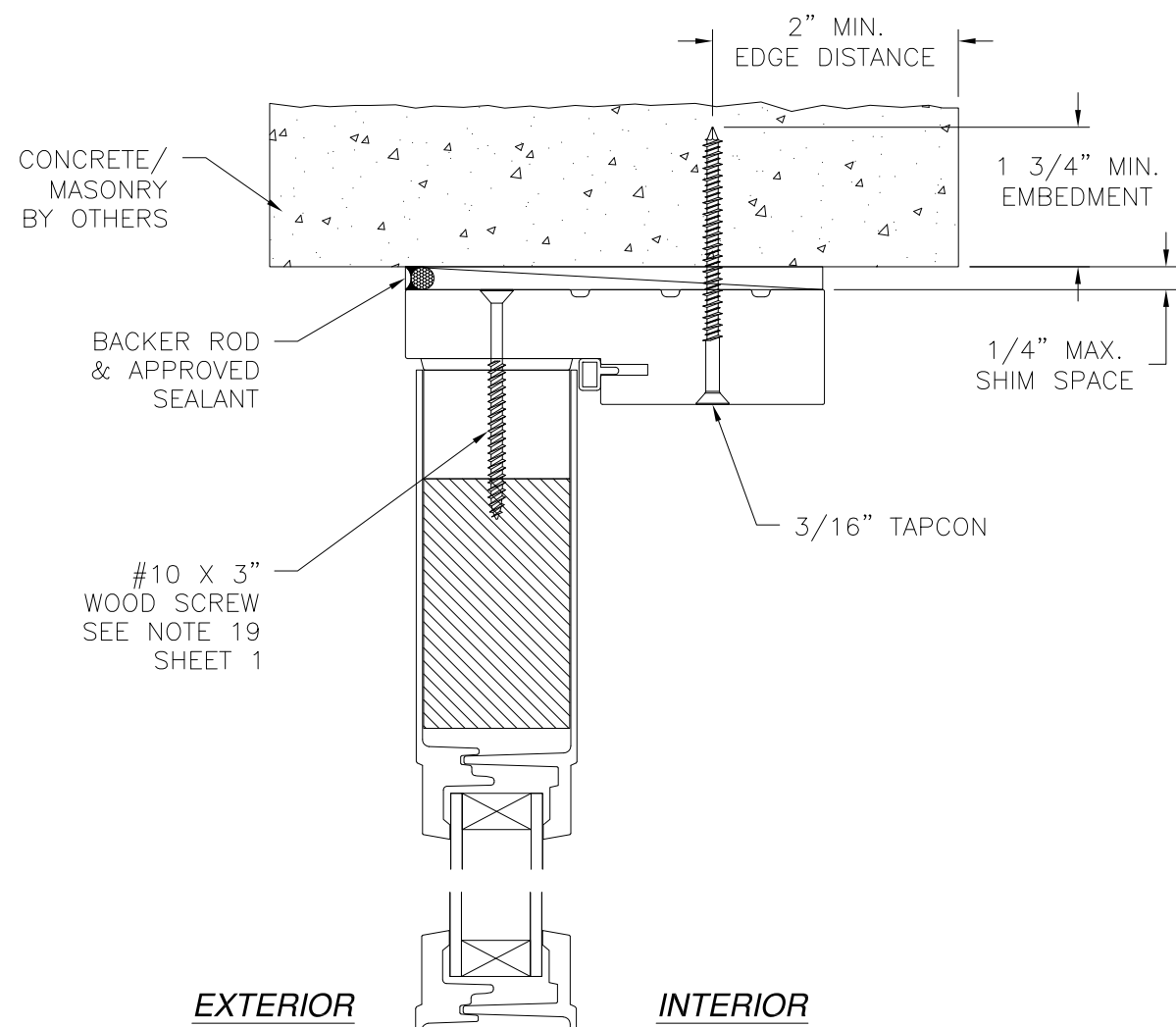
DRAWN: A.R.	DWG NO. 08-03310	REV B
SCALE NTS	DATE 09/27/18	SHEET 13 OF 17

L. ROBERTO LOMAS P.E.
400 S. PALM AVE, INDIALANTIC, FL 32903
434-688-0609 rllomas@rlomaspe.com



Luis R. Lomas P.E.
TX No.: 101889
Firm No: F-23130

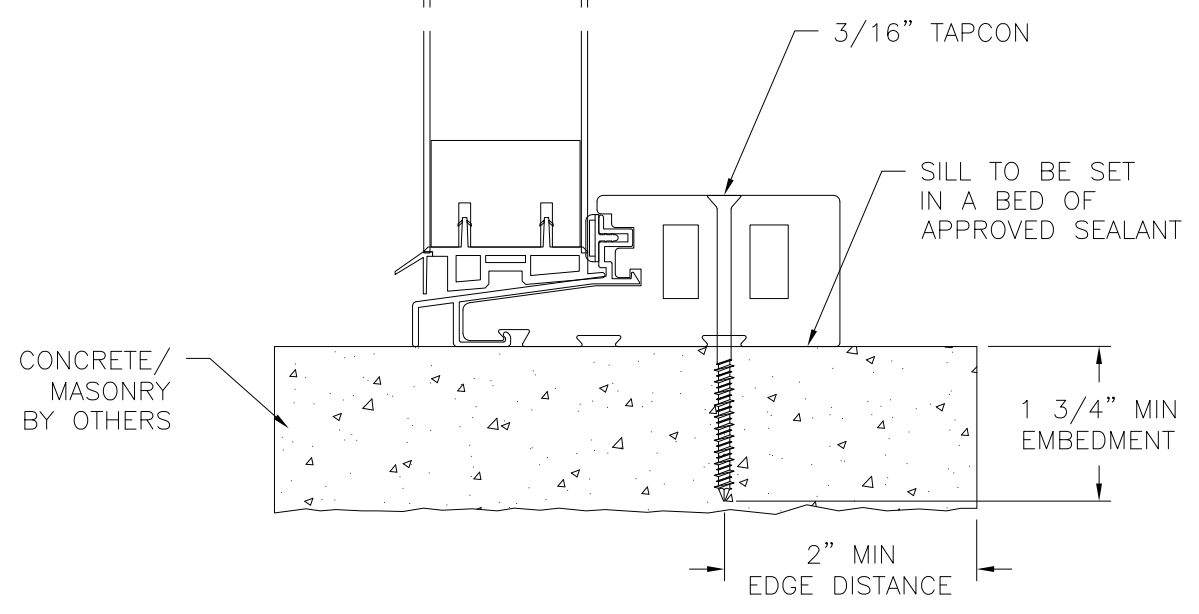
REVISIONS			
REV	DESCRIPTION	DATE	APPROVED
A	REVISED TO ADD 3/4 LITE PANEL	02/10/2021	R.L.
B	REVISED TO ADD INSTALLATION DETAILS	03/14/2022	R.L.



SIDELITE INSTALLATION DETAIL
CONCRETE/MASONRY INSTALLATION

- NOTES:**
1. INTERIOR AND EXTERIOR FINISHES, BY OTHERS, NOT SHOWN FOR CLARITY.
 2. PERIMETER AND JOINT SEALANT BY OTHERS TO BE DESIGNED IN ACCORDANCE WITH ASTM E2112

SIGNED: 03/25/2022



SIDELITE DOOR INSTALLATION DETAIL
CONCRETE/MASONRY INSTALLATION

NAN YA PLASTICS CORPORATION U.S.A.
8989 NORTH LOOP EAST
HOUSTON, TX 77029

SERIES "SLPS LITE" GLAZED FIBERGLASS OUTSWING
SIDE-HINGED DOOR W/SIDELITES NON-IMPACT
SIDELITE INSTALLATION DETAILS

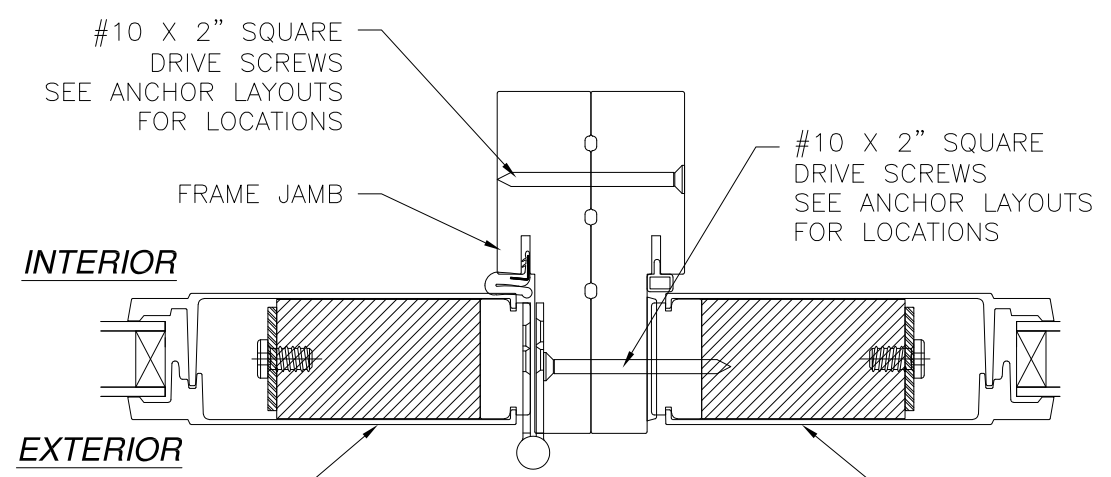
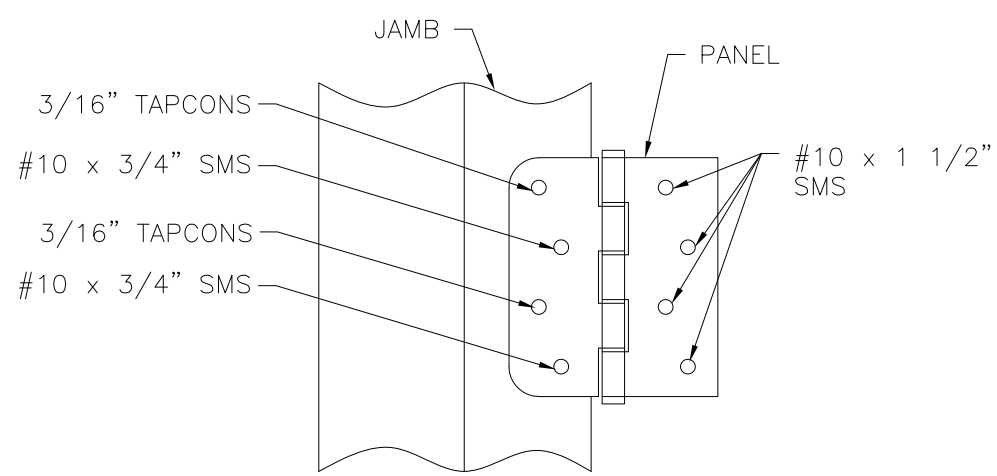
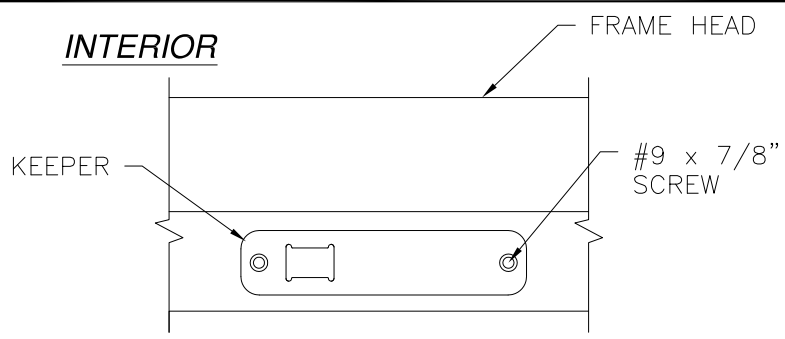
DRAWN: A.R.	DWG NO. 08-03310	REV B
SCALE NTS	DATE 09/27/18	SHEET 14 OF 17

L. ROBERTO LOMAS P.E.
400 S. PALM AVE, INDIALANTIC, FL 32903
434-688-0609 rllomas@rlomaspe.com



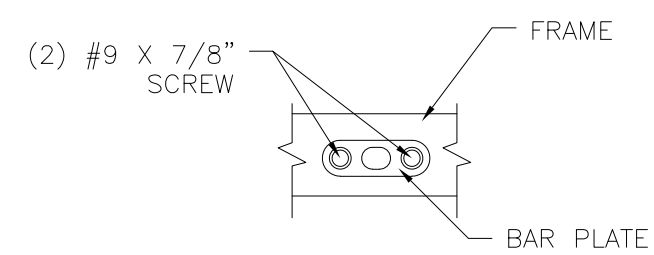
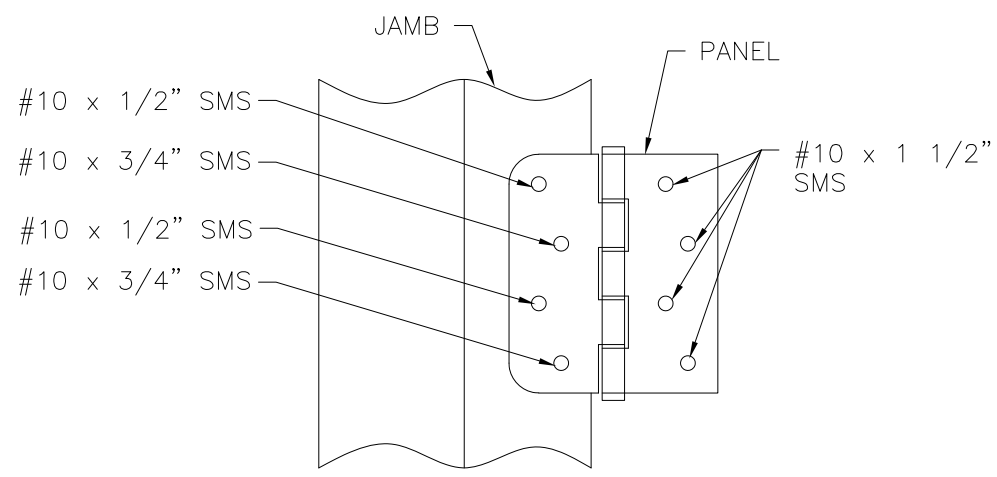
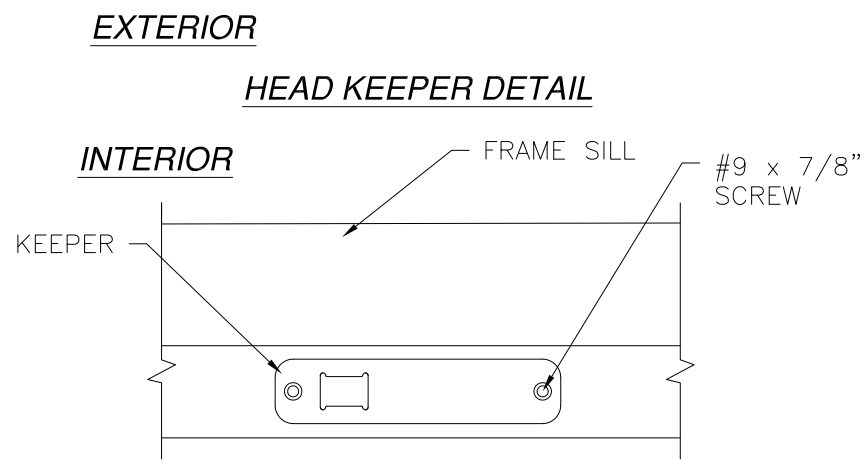
Luis R. Lomas P.E.
TX No.: 101889
Firm No: F-23130

REVISIONS			
REV	DESCRIPTION	DATE	APPROVED
A	REVISED TO ADD 3/4 LITE PANEL	02/10/2021	R.L.
B	REVISED TO ADD INSTALLATION DETAILS	03/14/2022	R.L.



HINGE INSTALLATION DETAIL
 MASONRY/CONCRETE INSTALLATION

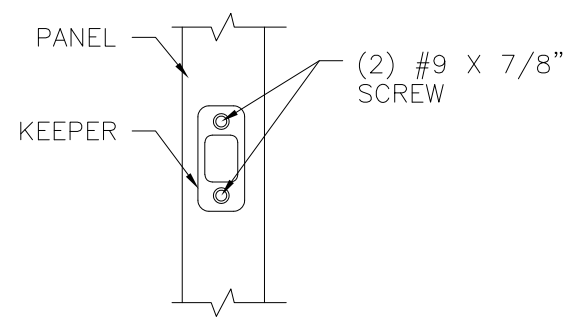
MULLION DETAIL
 DOOR ANCHORS SCREWS NOT SHOWN FOR CLARITY



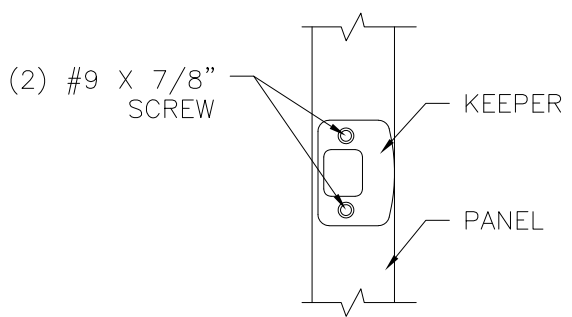
DRIVE BAR PLATE DETAIL

HINGE INSTALLATION DETAIL
 WOOD AND METAL INSTALLATION

EXTERIOR
 SILL KEEPER DETAIL



DEADBOLT KEEPER DETAIL



LATCH KEEPER DETAIL

SIGNED: 03/25/2022

NAN YA PLASTICS CORPORATION U.S.A.
 8989 NORTH LOOP EAST
 HOUSTON, TX 77029

SERIES "SLPS LITE" GLAZED FIBERGLASS OUTSWING
 SIDE-HINGED DOOR W/SIDELITES NON-IMPACT
 INSTALLATION DETAILS & COMPONENTS

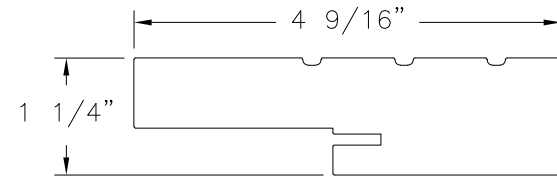
DRAWN: A.R.	DWG NO. 08-03310	REV B
SCALE NTS	DATE 09/27/18	SHEET 15 OF 17

L. ROBERTO LOMAS P.E.
 400 S. PALM AVE, INDIALANTIC, FL 32903
 434-688-0609 rllomas@rlomaspe.com

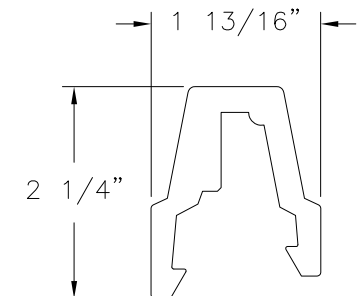


Luis R. Lomas P.E.
 TX No.: 101889
 Firm No: F-23130

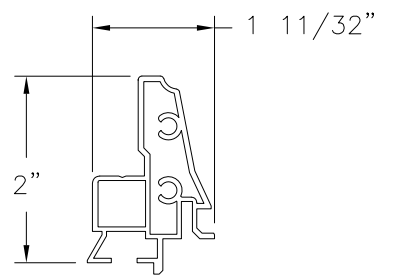
REVISIONS			
REV	DESCRIPTION	DATE	APPROVED
A	REVISED TO ADD 3/4 LITE PANEL	02/10/2021	R.L.
B	REVISED TO ADD INSTALLATION DETAILS	03/14/2022	R.L.



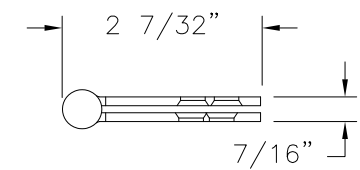
HEAD FRAME & JAMB
FOAM PVC CO-EX



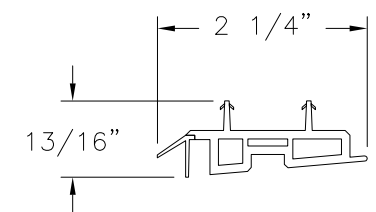
MULLION COVER (B)
FOAM PVC



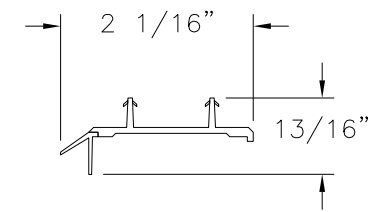
REINFORCEMENT (B)
ALUMINUM



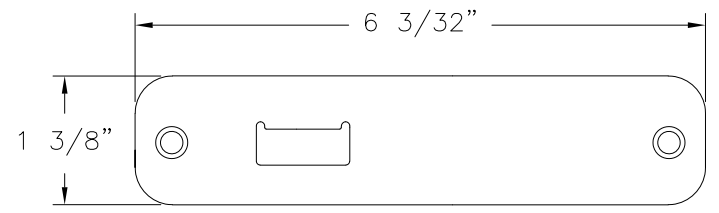
4" X 4" DOOR HINGE
STEEL



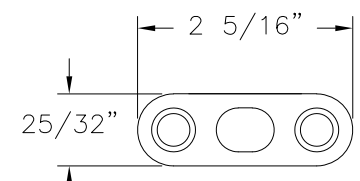
DOOR BOTTOM-B
PVC CO-EX



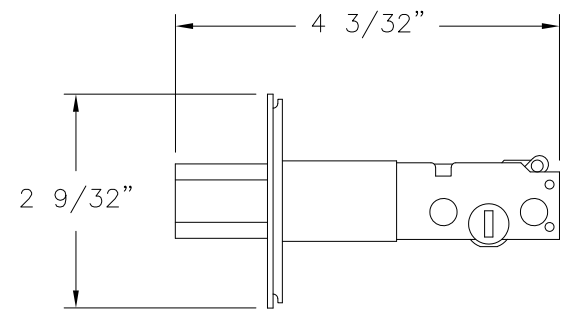
DOOR BOTTOM-A
PVC CO-EX



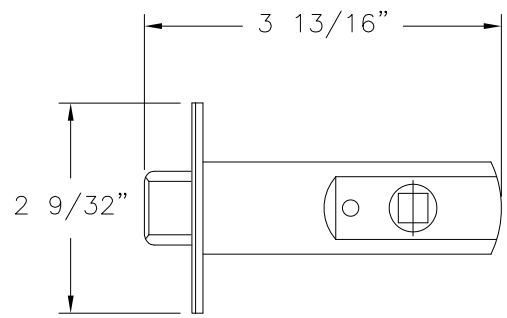
TOP/BOTTOM BAR KEEPER
STAINLESS STEEL (SS92H)
BY JAM YUAN ENTERPRISES CO., LTD



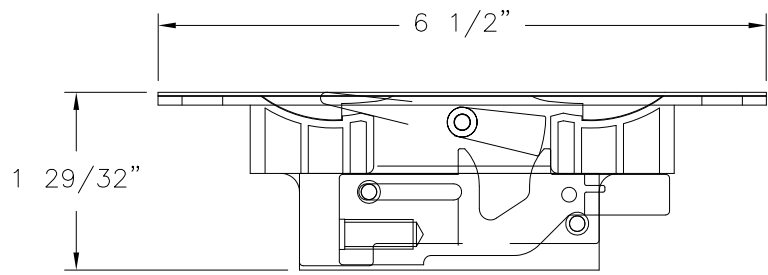
DRIVE BAR PLATE
STAINLESS STEEL
BY JAM YUAN ENTERPRISES CO., LTD.



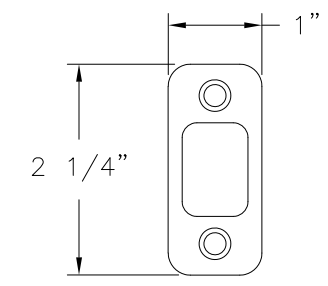
DOOR DEADBOLT
STEEL (SS92Y)
BY JAM YUAN ENTERPRISES CO., LTD



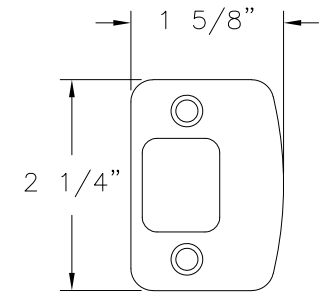
DOOR LATCH
STEEL (SS92Y)
BY JAM YUAN ENTERPRISES CO., LTD



FLUSH BOLT MECHANISM
DIE CAST, STEEL, POM (SS93X)
BY JAM YUAN ENTERPRISES CO., LTD



DEADBOLT KEEPER
STAINLESS STEEL
BY JAM YUAN ENTERPRISES CO., LTD



LATCH KEEPER
STAINLESS STEEL
BY JAM YUAN ENTERPRISES CO., LTD



FLUSH BOLT BAR
STAINLESS STEEL (SS93B)
BY JAM YUAN ENTERPRISES CO., LTD

SIGNED: 03/25/2022

NAN YA PLASTICS CORPORATION U.S.A.
8989 NORTH LOOP EAST
HOUSTON, TX 77029

SERIES "SLPS LITE" GLAZED FIBERGLASS OUTSWING
SIDE-HINGED DOOR W/SIDELITES NON-IMPACT
COMPONENTS

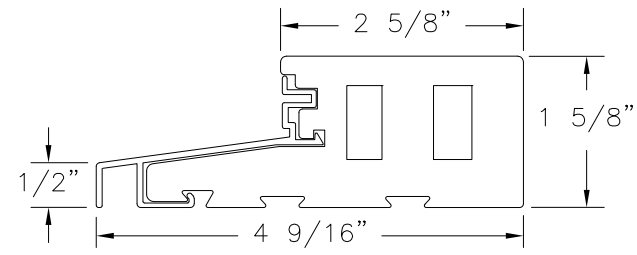
DRAWN: A.R.	DWG NO. 08-03310	REV B
SCALE NTS	DATE 09/27/18	SHEET 16 OF 17

L. ROBERTO LOMAS P.E.
400 S. PALM AVE, INDIALANTIC, FL 32903
434-688-0609 rllomas@rlomaspe.com

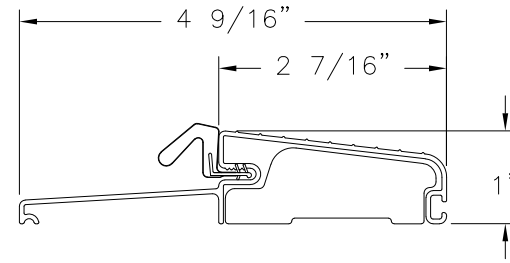


Luis R. Lomas P.E.
TX No.: 101889
Firm No: F-23130

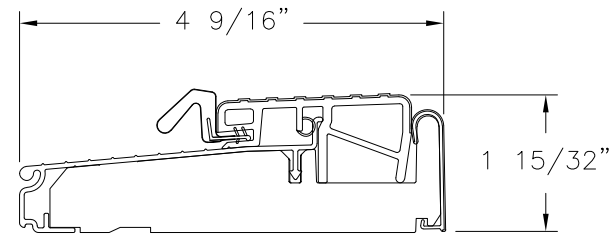
REVISIONS			
REV	DESCRIPTION	DATE	APPROVED
A	REVISED TO ADD 3/4 LITE PANEL	02/10/2021	R.L.
B	REVISED TO ADD INSTALLATION DETAILS	03/14/2022	R.L.



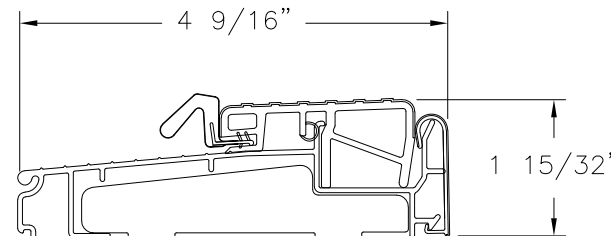
OUTSWING DOOR SILL DETAIL



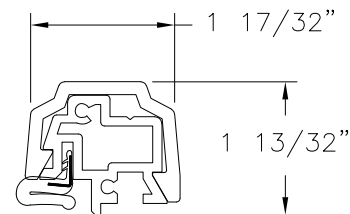
OUTSWING THRESHOLD FOB4565
ALTERNATE



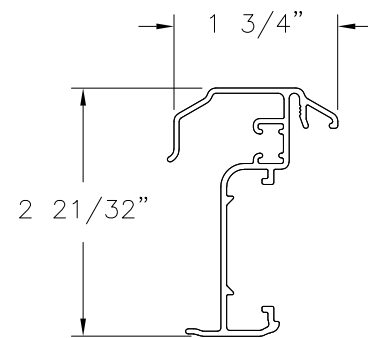
OUTSWING THRESHOLD ZOB4565FN
ALTERNATE



OUTSWING THRESHOLD ZOB4565
ALTERNATE



T-ASTRAGAL
RIGID PVC



ULTIMATE PUSH BUTTON
ASTRAGAL
ALTERNATE

SIGNED: 03/25/2022

NAN YA PLASTICS CORPORATION U.S.A.
8989 NORTH LOOP EAST
HOUSTON, TX 77029

SERIES "SLPS LITE" GLAZED FIBERGLASS OUTSWING
SIDE-HINGED DOOR W/SIDELITES NON-IMPACT
COMPONENTS

DRAWN: A.R.	DWG NO. 08-03310	REV B
----------------	---------------------	----------

SCALE NTS	DATE 09/27/18	SHEET 17 OF 17
-----------	---------------	----------------

L. ROBERTO LOMAS P.E.
400 S. PALM AVE, INDIALANTIC, FL 32903
434-688-0609 rllomas@rlomaspe.com



Luis R. Lomas P.E.
TX No.: 101889
Firm No: F-23130