

SERIES 9050, NON-IMPACT, ALUMINUM, OUTSWING & INSWING TERRACE DOOR

DESIGN PRESSURE RATING
SEE SHEET 2

IMPACT RATING
NOT RATED FOR MISSILE IMPACT RESISTANCE

1) THE PRODUCT SHOWN HEREIN IS DESIGNED AND MANUFACTURED TO COMPLY WITH THE REQUIREMENTS OF THE 2018 INTERNATIONAL BUILDING CODE AND THE 2018 INTERNATIONAL RESIDENTIAL CODE.

2) SHUTTERS ARE REQUIRED PER IBC REQUIREMENTS, AS APPLICABLE.

3) MATERIALS USED FOR ANCHOR EVALUATIONS WERE SOUTHERN PINE, ASTM C90 CONCRETE MASONRY UNITS (CMU'S) OF NORMAL WEIGHT AND OF COMPRESSIVE STRENGTH OF MIN. 1.9 KSI AND CONCRETE WITH MIN. KSI PER ANCHOR TYPE.

4) MASONRY ANCHORS MAY BE USED INTO WOOD AS PER TABLE 1, THIS SHEET. ALL WOOD BUCKS LESS THAN 1-1/2" THICK ARE TO BE CONSIDERED 1X INSTALLATIONS. 1X WOOD BUCKS ARE OPTIONAL IF UNIT IS INSTALLED DIRECTLY TO SUBSTRATE. WOOD BUCKS DEPICTED AS 2X ARE 1-1/2" THICK OR GREATER. 1X AND 2X BUCKS (WHEN USED) SHALL BE DESIGNED TO PROPERLY TRANSFER LOADS TO THE STRUCTURE. WOOD BUCK DESIGN AND INSTALLATION IS THE RESPONSIBILITY OF THE ENGINEER OR ARCHITECT OF RECORD.

5) IF SILL IS TIGHT TO SUBSTRATE, GROUT IS NOT REQUIRED. IF USED, NON-SHRINK, NON-METALLIC GROUT AT 3.4 KSI MIN. PER ASTM C1107, (DONE BY OTHERS). MAX. 1/4" SHIM SPACE FOR GROUT WHICH MUST FULLY SUPPORT THE ENTIRE LENGTH OF THE SILL THAT IS NOT TIGHT TO THE SUBSTRATE, AND TRANSFER SHEAR LOAD TO SUBSTRATE. IF SUBSTRATE IS WOOD, 30# FELT PAPER OR MASTIC IS REQUIRED BETWEEN THE GROUT AND WOOD SUBSTRATE, OR AS APPROVED BY THE AUTHORITY HAVING JURISDICTION.

6) ANCHOR EMBEDMENT TO BASE MATERIAL SHALL BE BEYOND WALL DRESSING OR STUCCO. USE ANCHORS OF SUFFICIENT LENGTH TO ACHIEVE THE EMBEDMENT SHOWN ON TABLE 1, THIS SHEET. NARROW JOINT SEALANT IS USED ON ALL FOUR CORNERS OF THE FRAME. EXTERIOR INSTALLATION ANCHORS SHOULD BE SEALED. OVERALL SEALING/FLASHING STRATEGY FOR WATER RESISTANCE OF INSTALLATION SHALL BE DONE BY OTHERS AND IS BEYOND THE SCOPE OF THESE INSTRUCTIONS.

7) MAX. 1/4" SHIMS ARE REQUIRED AT EACH ANCHOR LOCATION WHERE THE PRODUCT IS NOT FLUSH TO THE SUBSTRATE. USE SHIMS CAPABLE OF TRANSFERRING APPLIED LOADS. WOOD BUCKS, BY OTHERS, MUST BE SUFFICIENTLY ANCHORED TO RESIST LOADS IMPOSED ON THEM BY THE DOOR.

8) DESIGN PRESSURES:

- A. NEGATIVE DESIGN LOADS BASED ON STRUCTURAL TEST PRESSURE AND GLASS PER ASTM E1300.
- B. POSITIVE DESIGN LOADS BASED ON WATER TEST PRESSURE, STRUCTURAL TEST PRESSURE AND GLASS PER ASTM E1300.
- C. DESIGN LOADS ARE BASED ON ALLOWABLE STRESS DESIGN, ASD.

9) DOOR SIZES MUST BE VERIFIED FOR COMPLIANCE WITH EGRESS REQUIREMENTS OF THE IBC, AS APPLICABLE.

10) ANCHORAGE: THE 33-1/3% STRESS INCREASE HAS NOT BEEN USED IN THE DESIGN OF THIS PRODUCT. ANCHORS SHALL BE COATED OR CORROSION RESISTANT AS SPECIFIED IN THE BUILDING CODE.

11) REFERENCES:

TEST REPORTS: NCTL-210-4060-01, NCTL-210-4060-02, FTL-18-8171

TABLE 1:

Anchor Group	Anchor Type	Frame Member	Substrate	Min. Edge Distance	Min. Embedment or Metal Thickness
A	#14 Steel SMS (Gr. 5)	All	Southern Pine (SG = 0.55)	9/16"	1-3/8"
			6063-T5 Aluminum	3/8"	0.090"
			A36 Steel	3/8"	0.063"
			Steel Stud, Gr. 34	3/8"	0.045"
B	#14 18-8 Stainless Steel SMS	All	Southern Pine (SG = 0.55)	9/16"	1-3/8"
			6063-T5 Aluminum	3/8"	0.090"
			A36 Steel	3/8"	0.063"
			Steel Stud, Gr. 35	3/8"	0.045"
C	1/4" Elco UltraCon®	Jamb & Head	Concrete (min. 2.85 ksi)	1"	1-3/4"
		Sill	Concrete (min. 2.85 ksi)	1"	1-3/8"
		Jamb	Hollow/Filled CMU (ASTM C90)	2-1/2"	1-1/4"
D	1/4" Elco UltraCon®	Jamb & Head	Concrete (min. 2.85 ksi)	2-1/2"	1-3/4"
		Sill	Concrete (min. 2.85 ksi)	2-1/2"	1-3/8"
		All	Concrete (min. 3.35 ksi)	2-1/2"	1-1/4"
	1/4" 410 SS Elco CreteFlex®	All	Hollow/Filled CMU (ASTM C90)	2-1/2"	1-1/4"
		All	Concrete (min. 3.35 ksi)	2-1/2"	1-3/4"
		Sill	Concrete (min. 3.35 ksi)	2-1/2"	1-3/4"

- 1) ALL ANCHOR HEAD TYPES ARE APPLICABLE.
- 2) MIN. OF 3 THREADS BEYOND METAL SUBSTRATE.

INSTRUCTIONS:

- 1) DETERMINE THE DESIGN PRESSURE REQUIREMENT (LBS/FT²) FOR THE OPENING USING THE ASCE-7 STANDARD.
- 2) FROM SHEET 2, DETERMINE THE DESIGN PRESSURE OF YOUR PRODUCT USING THE APPROPRIATE TABLE. THIS DESIGN PRESSURE NEEDS TO BE HIGHER THAN THE OPENING'S REQUIRED DESIGN PRESSURE FROM STEP 1.
- 3) DETERMINE YOUR ANCHOR GROUP FROM TABLE 1, THIS SHEET.
- 4) ANCHOR LOCATIONS AND SPACING ARE SHOWN ON THE ELEVATIONS ON SHEETS 2.
- 5) DEPENDING ON THE PRODUCT CONFIGURATION, SHEETS 4-7 SHOW INSTALLATION CROSS-SECTION DETAILS.

TABLE 2:

Frame Size		Design Pressure, psf		Configuration	Certification Numbers
Width	Height	+	-		
46"	128"	+100	-120	X In-Swing	167-1349
84-1/2"	128"	+55	-80	XX In-Swing	167-1350
46"	128"	+100	-120	X Out-Swing	167-1358
84-1/2"	128"	+55	-80	XX Out-Swing	167-1355

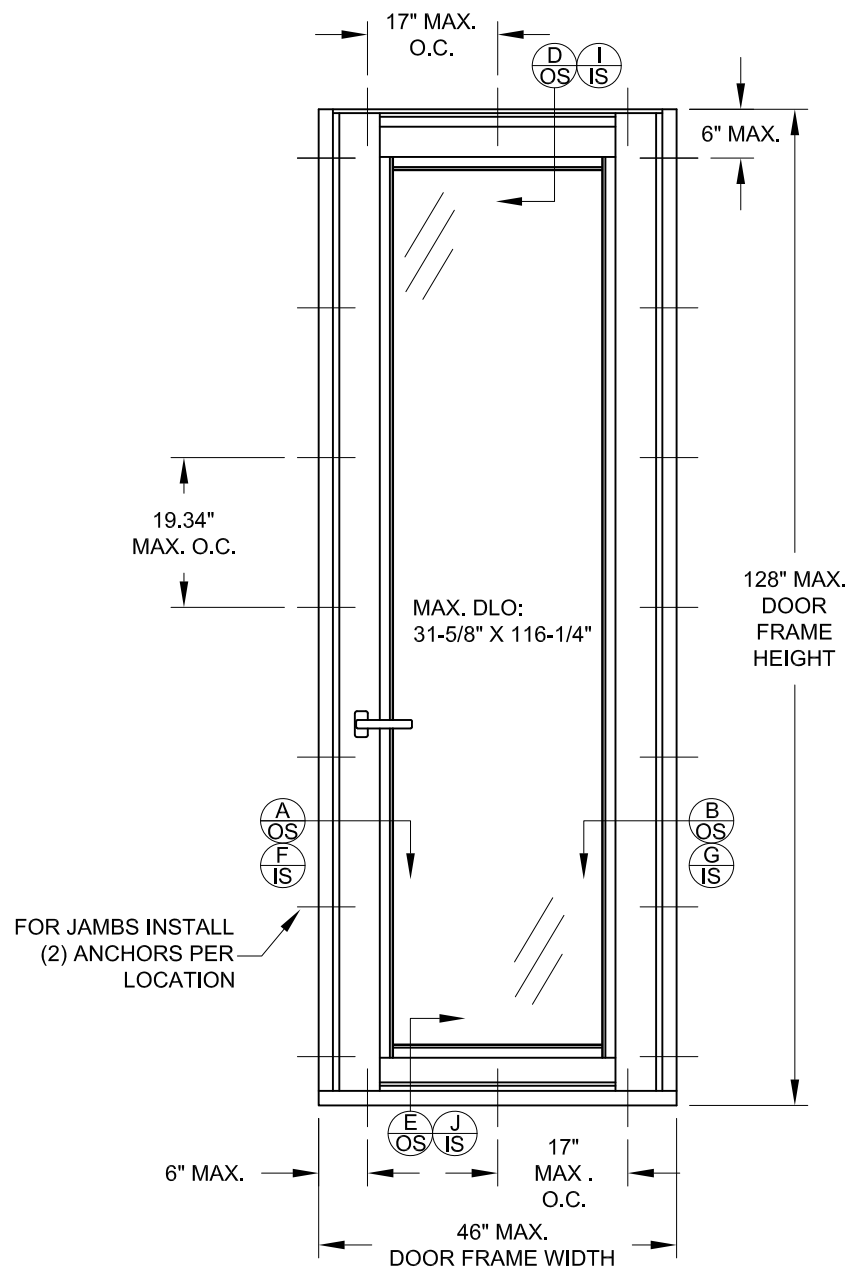
GUIDE TO SHEETS:

GENERAL NOTES.....	1
ELEVATION, DP & GLAZING.....	2
CLUSTER QTY & DETAILS.....	3
HORIZ. INSTAL., OUTSWING.....	4
VERT. INSTAL., OUTSWING.....	5
HORIZ. INSTAL., INSWING.....	6
VERT. INSTAL., INSWING.....	7
EXTRUSIONS.....	8
PARTS/HARDWARE LIST.....	9

Revision: A) UPDATED TO NEW BUILDING CODE, MINOR TABLE CORRECTIONS - JR - 6/2/22

PREPARED BY A. LYNN MILLER 1070 TECHNOLOGY DRIVE N. VENICE, FL 34275 (941) 480-1600	COPYRIGHT © 2022 WINDOOR, INC. ALL RIGHTS RESERVED	Date	02/05/19
		By	JENS ROSOWSKI
WINDOOR INCORPORATED 104 TRIPLE DIAMOND BLVD. NORTH VENICE, FL 34275 (833) 554-5432	ALUMINUM IS/OS TERRACE DOOR (NI)	DWG No.	9050NITDI-1
		Sheet	1 OF 9
GEN. NOTES & ANCHOR TABLE		Series	TD9050

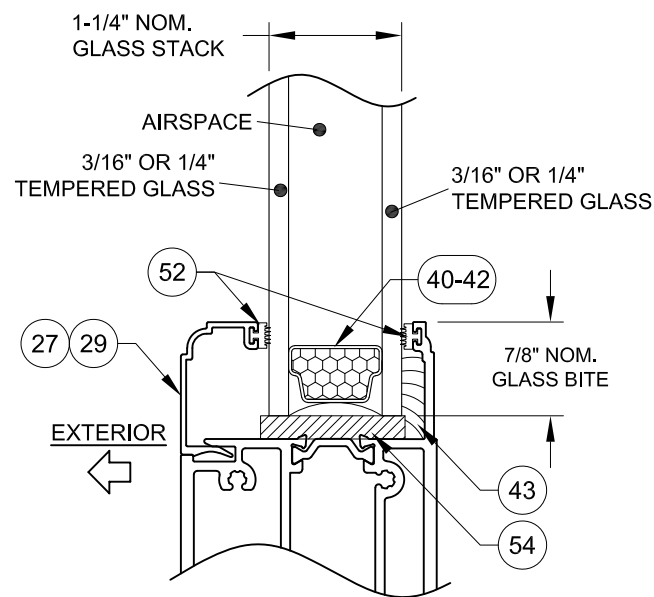
ANTHONY LYNN MILLER
106954
LICENSED PROFESSIONAL ENGINEER
A. Lynn Miller 06/03/22
A. LYNN MILLER, P.E.
P.E.# 106954



**TYP. ELEVATION OF SINGLE DOOR, (X)
INSWING & OUTSWING**

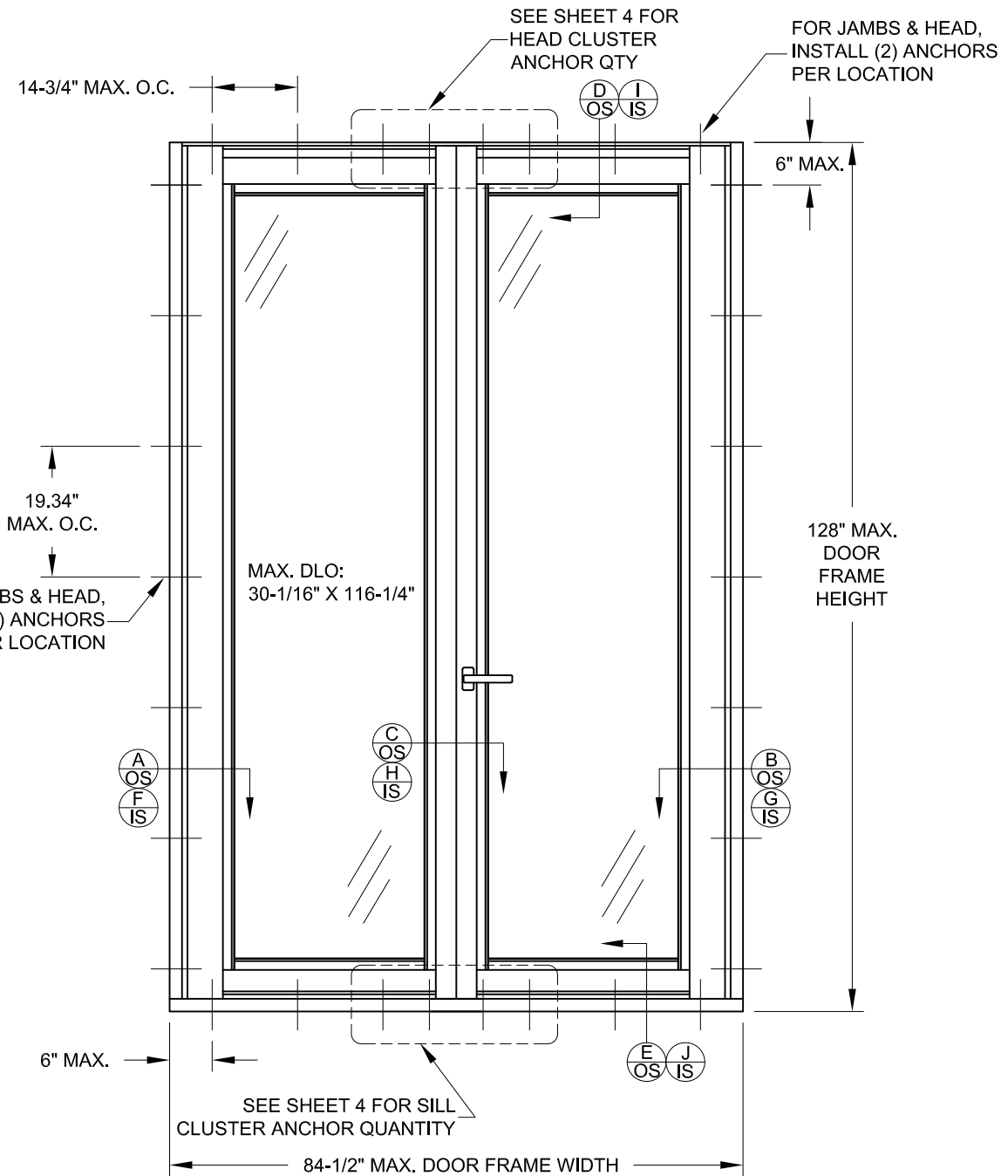
FOR X DOORS:

DESIGN PRESSURE RATING
+100.0 / -120.0 PSF



GLAZING DETAIL

- DETAIL LETTER
OUTSWING, SEE SHEETS 4 & 5
- DETAIL LETTER
INSWING, SEE SHEETS 6 & 7



**TYP. ELEVATION OF DOUBLE DOOR, (XX)
INSWING & OUTSWING**

FOR XX DOORS:

DESIGN PRESSURE RATING
+55.0 / -80.0 PSF

Revision:
A) ADDED 1/4\"

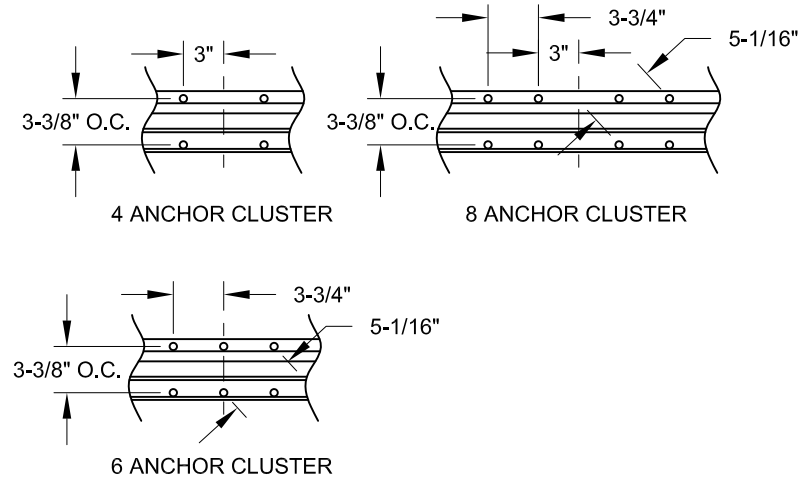
PREPARED BY A. LYNN MILLER 1070 TECHNOLOGY DRIVE N. VENICE, FL 34275 (941) 480-1600	COPYRIGHT © 2022 WINDOOR, INC. ALL RIGHTS RESERVED	Date	02/05/19
		By	JENS ROSOWSKI
WINDOOR INCORPORATED 104 TRIPLE DIAMOND BLVD. NORTH VENICE, FL 34275 (833) 554-5432	ALUMINUM IS/OS TERRACE DOOR (NI)	No.	9050NITDI-1
		DWG	2 OF 9
XX ELEVATION & DP		Sheet	TD9050
Series		Rev	A

A. Lynn Miller 06/03/22
A. LYNN MILLER, P.E.
 P.E.# 106954

TABLE 3:

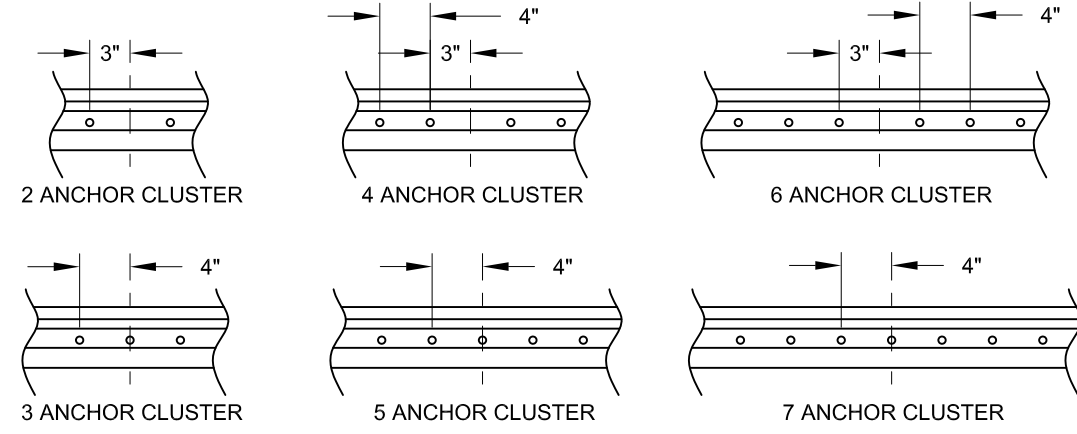
Min. Quantity of Anchors Required at the Cluster								
Frame Height	Frame Location	Anchor Group	Frame Width					
			54"	60"	66"	72"	76-1/2"	84-1/2"
72"	Head	A	4	4	4	4	4	4
	Sill		2	3	3	3	3	3
	Head	B	4	4	4	4	4	6
	Sill		3	3	3	3	3	4
	Head	C	4	4	4	4	4	4
	Sill		2	3	3	3	3	3
	Head	D	4	4	4	4	4	4
	Sill		3	3	3	3	4	4
80"	Head	A	4	4	4	4	4	6
	Sill		3	3	3	3	4	4
	Head	B	4	4	4	6	6	6
	Sill		3	3	3	4	4	4
	Head	C	4	4	4	4	4	6
	Sill		3	3	3	3	4	4
	Head	D	4	4	4	4	4	4
	Sill		3	3	3	4	4	4
84"	Head	A	4	4	4	4	6	6
	Sill		3	3	3	3	4	4
	Head	B	4	4	4	6	6	6
	Sill		3	3	3	4	4	4
	Head	C	4	4	4	4	4	6
	Sill		3	3	3	3	4	4
	Head	D	4	4	4	4	4	4
	Sill		3	3	4	4	4	4
96"	Head	A	4	4	6	6	6	6
	Sill		3	3	4	4	4	4
	Head	B	4	6	6	6	6	6
	Sill		3	4	4	4	4	5
	Head	C	4	4	4	6	6	6
	Sill		3	3	4	4	4	4
	Head	D	4	4	4	4	6	6
	Sill		3	4	4	4	5	5
108"	Head	A	4	6	6	6	6	6
	Sill		3	4	4	4	5	5
	Head	B	6	6	6	6	6	8
	Sill		4	4	4	5	5	5
	Head	C	4	4	6	6	6	6
	Sill		3	4	4	4	5	5
	Head	D	4	4	4	6	6	6
	Sill		4	4	4	5	5	6
120"	Head	A	6	6	6	6	6	8
	Sill		4	4	4	5	5	5
	Head	B	6	6	6	8	8	8
	Sill		4	4	5	5	5	6
	Head	C	4	6	6	6	6	8
	Sill		4	4	4	5	5	5
	Head	D	4	6	6	6	6	6
	Sill		4	5	5	5	6	6
128"	Head	A	6	6	6	6	8	8
	Sill		4	4	5	5	5	6
	Head	B	6	6	6	8	8	8
	Sill		4	5	5	5	6	6
	Head	C	6	6	6	6	6	8
	Sill		4	4	5	5	5	6
	Head	D	4	6	6	6	6	8
	Sill		4	5	5	6	6	7

ANCHOR CLUSTER PATTERN @ HEAD



PATTERNS SHOWN ABOVE APPLY TO BOTH INSWING AND OUTSWING CONFIGURATIONS. DOOR SWING DIRECTION

ANCHOR CLUSTER PATTERN @ SILL



PATTERNS SHOWN ABOVE APPLY TO BOTH INSWING AND OUTSWING CONFIGURATIONS. DOOR SWING DIRECTION

NOTES:

1) FOR SIZES NOT SHOWN, ROUND UP TO THE NEXT AVAILABLE WIDTH OR HEIGHT DIMENSION SHOWN ON THE TABLE.

Revision:

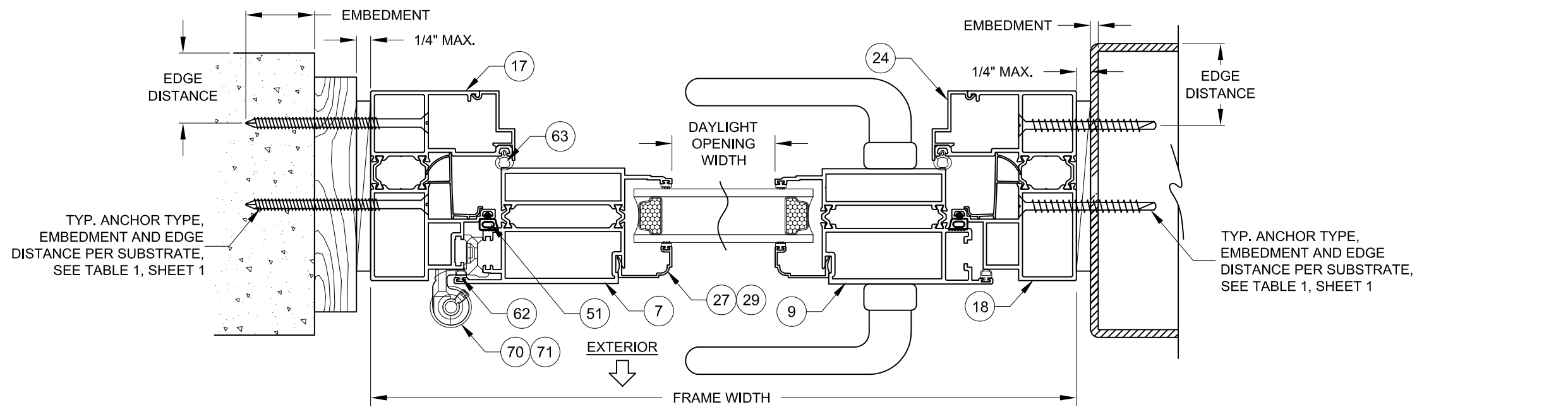
PREPARED BY A. LYNN MILLER 1070 TECHNOLOGY DRIVE N. VENICE, FL 34275 (941) 480-1600 COPYRIGHT © 2022 WINDOOR, INC. ALL RIGHTS RESERVED	Date	02/05/19
	By	JENS ROSOWSKI
WINDOOR INCORPORATED WINDOOR INCORPORATED 104 TRIPLE DIAMOND BLVD. NORTH VENICE, FL 34275 (833) 554-5432	DWG No.	9050NITDI-1
	Series	TD9050
ALUMINUM IS/OS TERRACE DOOR (NI) XX CLUSTER ANCHOR QTY.	Sheet	3 OF 9
Rev. A A		



A. Lynn Miller 06/03/22
 A. LYNN MILLER, P.E.
 P.E.# 106954

DETAIL A1 1X WOOD BUCKSTRIP.
THRU 1X WOOD CONCRETE/CMU PER ANCHOR REQUIREMENT
INTO MASONRY

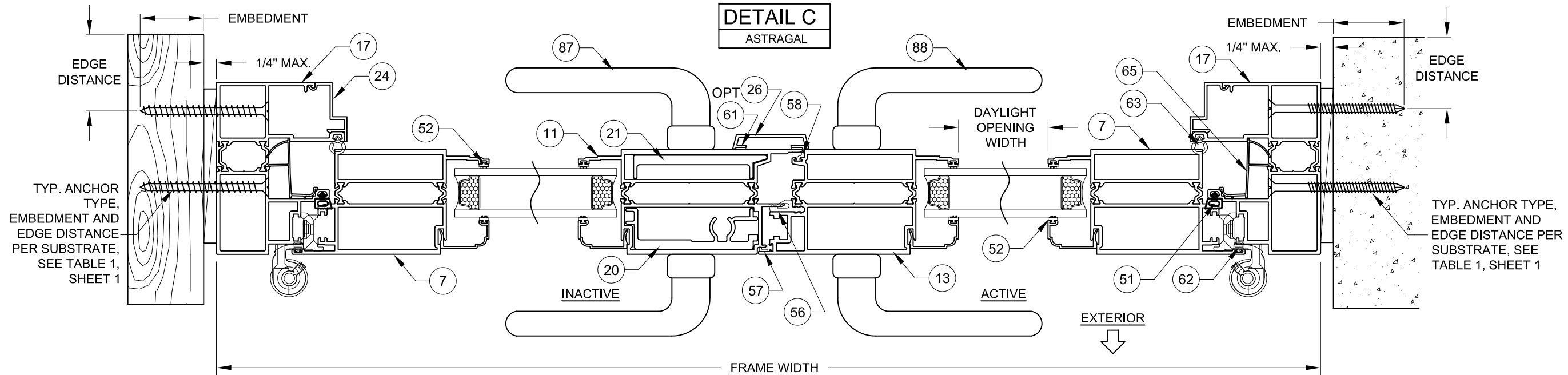
DETAIL B1 APPROVED MULLION, ALUMINUM OR STEEL FRAMING.
INTO METAL SEE TABLE 1, SHEET 1.



OUTSWING SINGLE DOOR

DETAIL A2 2X WOOD BUCKSTRIP OR FRAMING
INTO WOOD

DETAIL B2 CONCRETE/CMU PER ANCHOR REQUIREMENT
INTO MASONRY



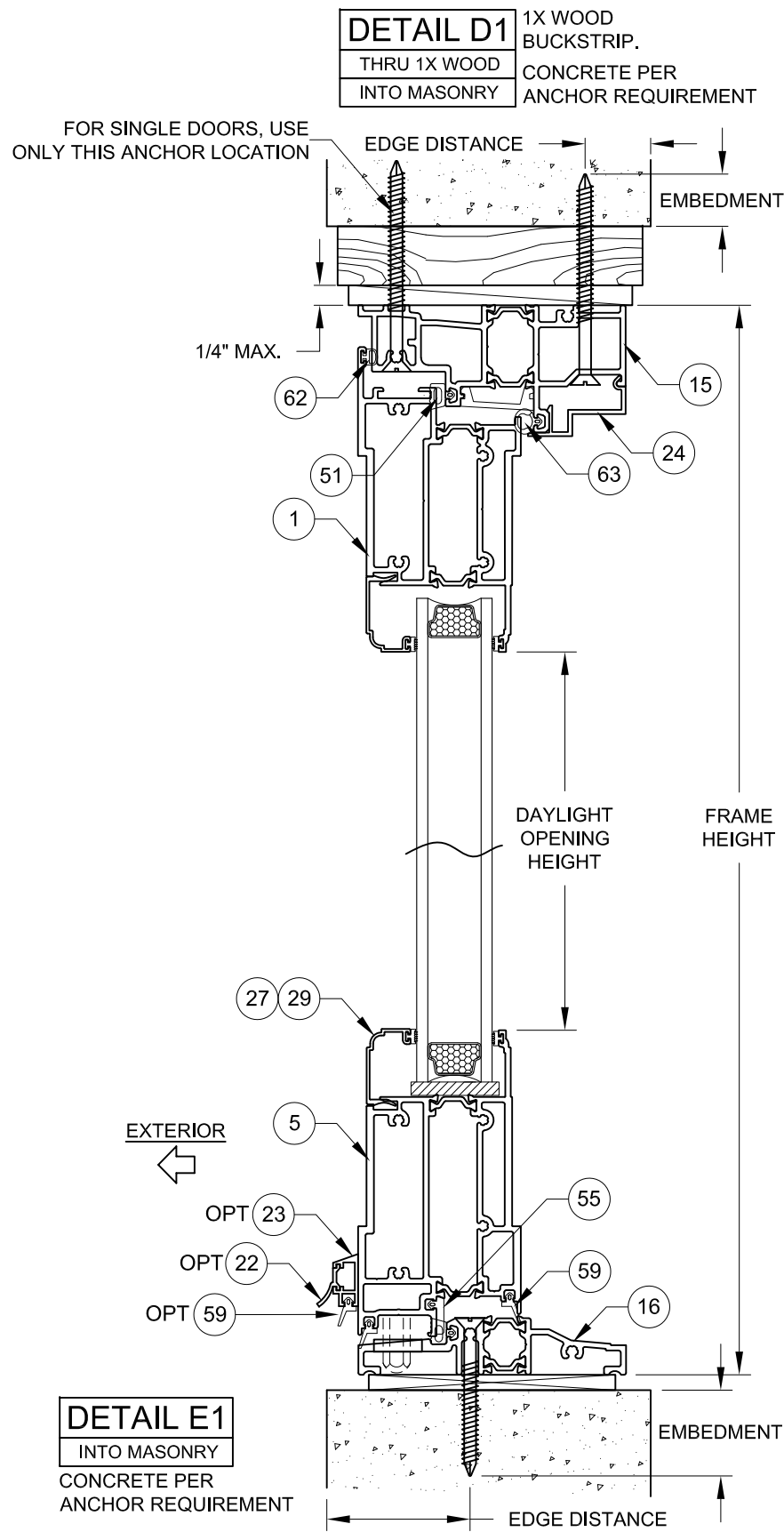
OUTSWING DOUBLE DOOR

NOTES:

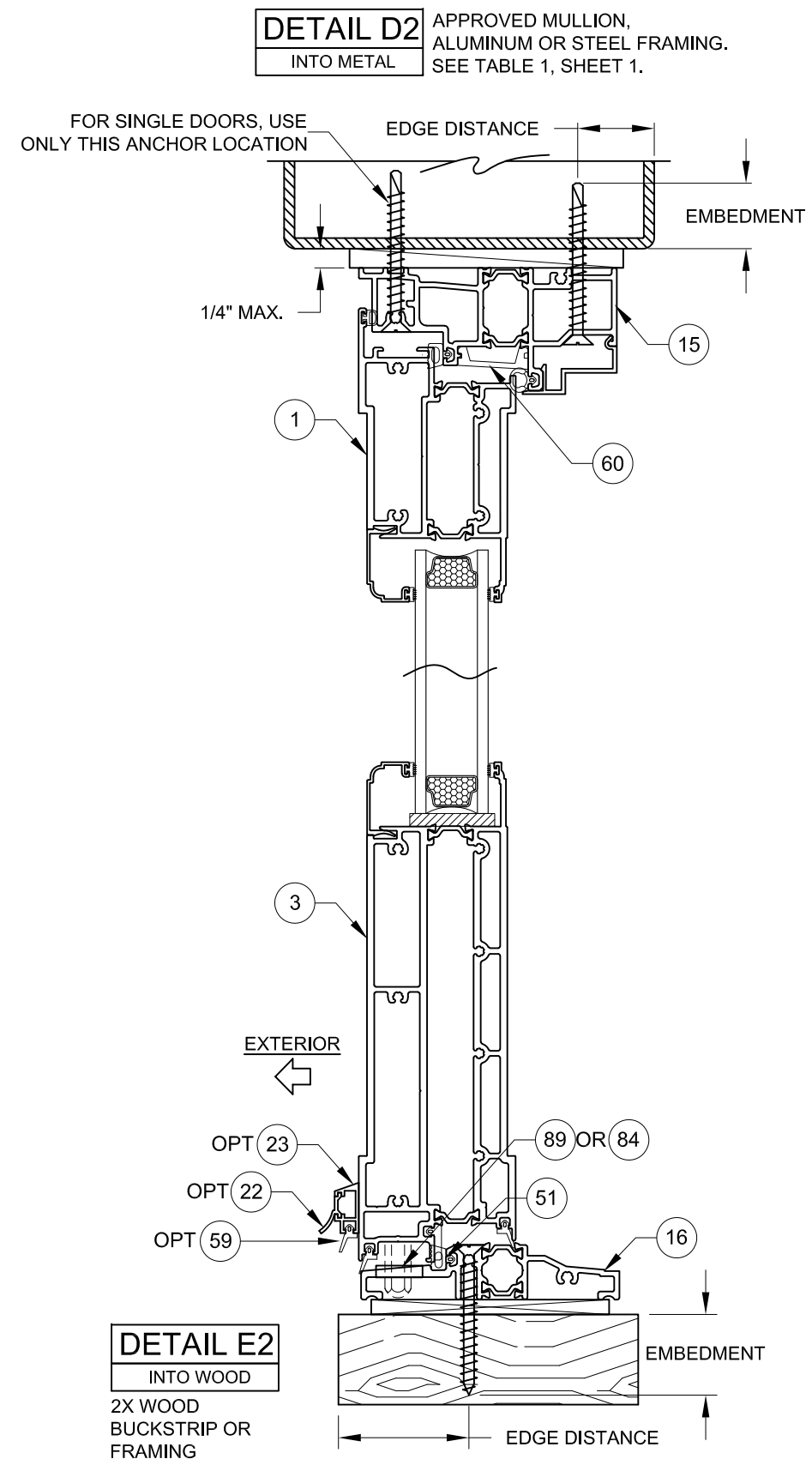
- 1) USE ONLY SUBSTRATE APPROPRIATE ANCHORS, FOLLOW EMBEDMENT, EDGE DISTANCE AND SUBSTRATE REQUIREMENTS PER TABLE 1, SHEET 1. ANY INSTALLATION OPTION SHOWN MAY BE USED. ALL ANCHOR HEAD TYPES ARE ALLOWED.
- 2) ALL WOOD BUCKS LESS THAN 1-1/2" THICK ARE TO BE CONSIDERED 1X INSTALLATIONS. 1X WOOD BUCKS ARE OPTIONAL. UNIT MAY BE INSTALLED DIRECTLY TO SUBSTRATE. WOOD BUCKS DEPICTED AS 2X ARE 1-1/2" THICK OR GREATER. 1X AND 2X BUCKS (WHEN USED) SHALL BE DESIGNED TO PROPERLY TRANSFER LOADS TO THE STRUCTURE. WOOD BUCK DESIGN AND INSTALLATION IS THE RESPONSIBILITY OF THE ENGINEER OR ARCHITECT OF RECORD.

Revision:

PREPARED BY A. LYNN MILLER 1070 TECHNOLOGY DRIVE N. VENICE, FL 34275 (941) 480-1600 COPYRIGHT © 2022 WINDOOR, INC. ALL RIGHTS RESERVED	Date	02/05/19	JENS ROSOWSKI	Rev	A
	By	JENS ROSOWSKI			
WINDOOR INCORPORATED 104 TRIPLE DIAMOND BLVD. NORTH VENICE, FL 34275 (833) 554-5432	DWG No.	9050NITDI-1	ALUMINUM IS/OS TERRACE DOOR (NI)	Desc.	Title
	Sheet	4 OF 9			
Series			A		



OUTSWING WITH STANDARD BOTTOM RAIL



OUTSWING WITH TALL BOTTOM RAIL

NOTES:

1) USE ONLY SUBSTRATE APPROPRIATE ANCHORS, FOLLOW EMBEDMENT, EDGE DISTANCE AND SUBSTRATE REQUIREMENTS PER TABLE 1, SHEET 1. ANY INSTALLATION OPTION SHOWN MAY BE USED. ALL ANCHOR HEAD TYPES ARE ALLOWED.

2) ALL WOOD BUCKS LESS THAN 1-1/2" THICK ARE TO BE CONSIDERED 1X INSTALLATIONS. 1X WOOD BUCKS ARE OPTIONAL. UNIT MAY BE INSTALLED DIRECTLY TO SUBSTRATE. WOOD BUCKS DEPICTED AS 2X ARE 1-1/2" THICK OR GREATER. 1X AND 2X BUCKS (WHEN USED) SHALL BE DESIGNED TO PROPERLY TRANSFER LOADS TO THE STRUCTURE. WOOD BUCK DESIGN AND INSTALLATION IS THE RESPONSIBILITY OF THE ENGINEER OR ARCHITECT OF RECORD.

Revision:

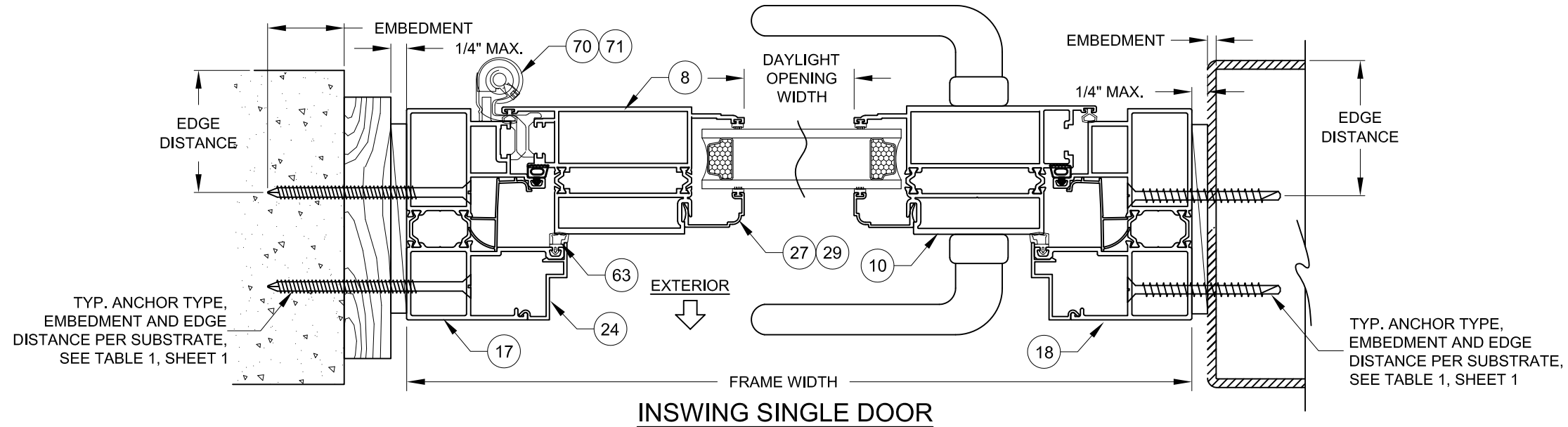
PREPARED BY A. LYNN MILLER 1070 TECHNOLOGY DRIVE N. VENICE, FL 34275 (941) 480-1600	COPYRIGHT © 2022 WINDOOR, INC. ALL RIGHTS RESERVED	Date	02/05/19
		By	JENS ROSOWSKI
WINDOOR INCORPORATED WINDOOR INCORPORATED 104 TRIPLE DIAMOND BLVD. NORTH VENICE, FL 34275 (833) 554-5432	ALUMINUM IS/OS TERRACE DOOR (NI) OUTSWING VERT. X-SECTION	DWG No.	9050NITDI-1
		Sheet	5 OF 9
		Rev	A



A. Lynn Miller 06/03/22
 A. LYNN MILLER, P.E.
 P.E.# 106954

DETAIL F1 1X WOOD BUCKSTRIP.
THRU 1X WOOD CONCRETE/CMU PER ANCHOR REQUIREMENT
INTO MASONRY

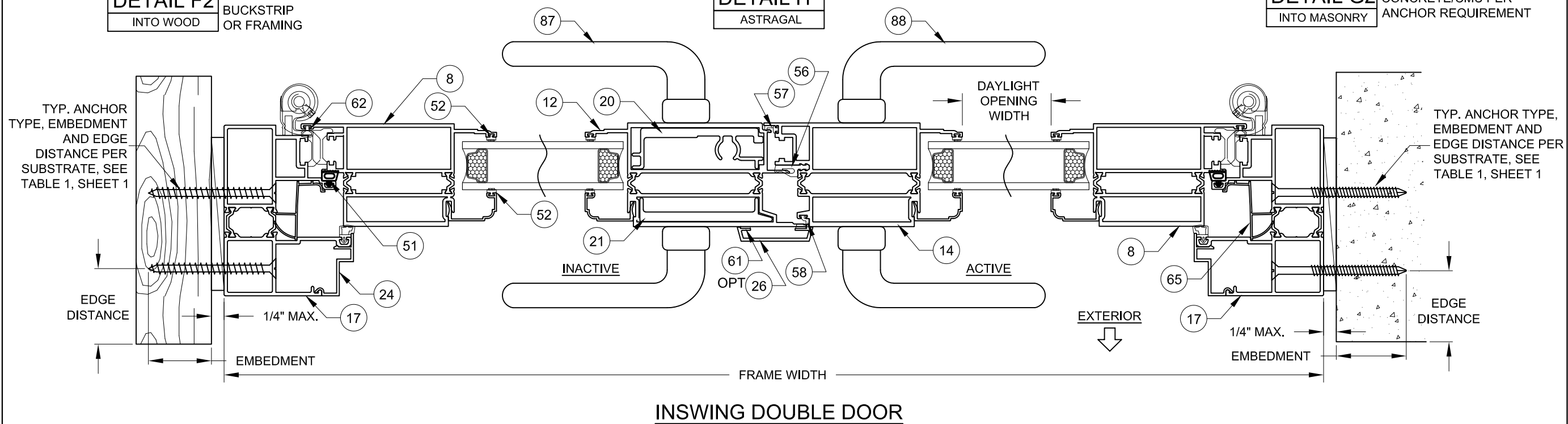
DETAIL G1 APPROVED MULLION, ALUMINUM OR STEEL FRAMING.
INTO METAL SEE TABLE 1, SHEET 1.



DETAIL F2 2X WOOD BUCKSTRIP OR FRAMING
INTO WOOD

DETAIL H ASTRAGAL

DETAIL G2 CONCRETE/CMU PER ANCHOR REQUIREMENT
INTO MASONRY



NOTES:

1) USE ONLY SUBSTRATE APPROPRIATE ANCHORS, FOLLOW EMBEDMENT, EDGE DISTANCE AND SUBSTRATE REQUIREMENTS PER TABLE 1, SHEET 1. ANY INSTALLATION OPTION SHOWN MAY BE USED. ALL ANCHOR HEAD TYPES ARE ALLOWED.

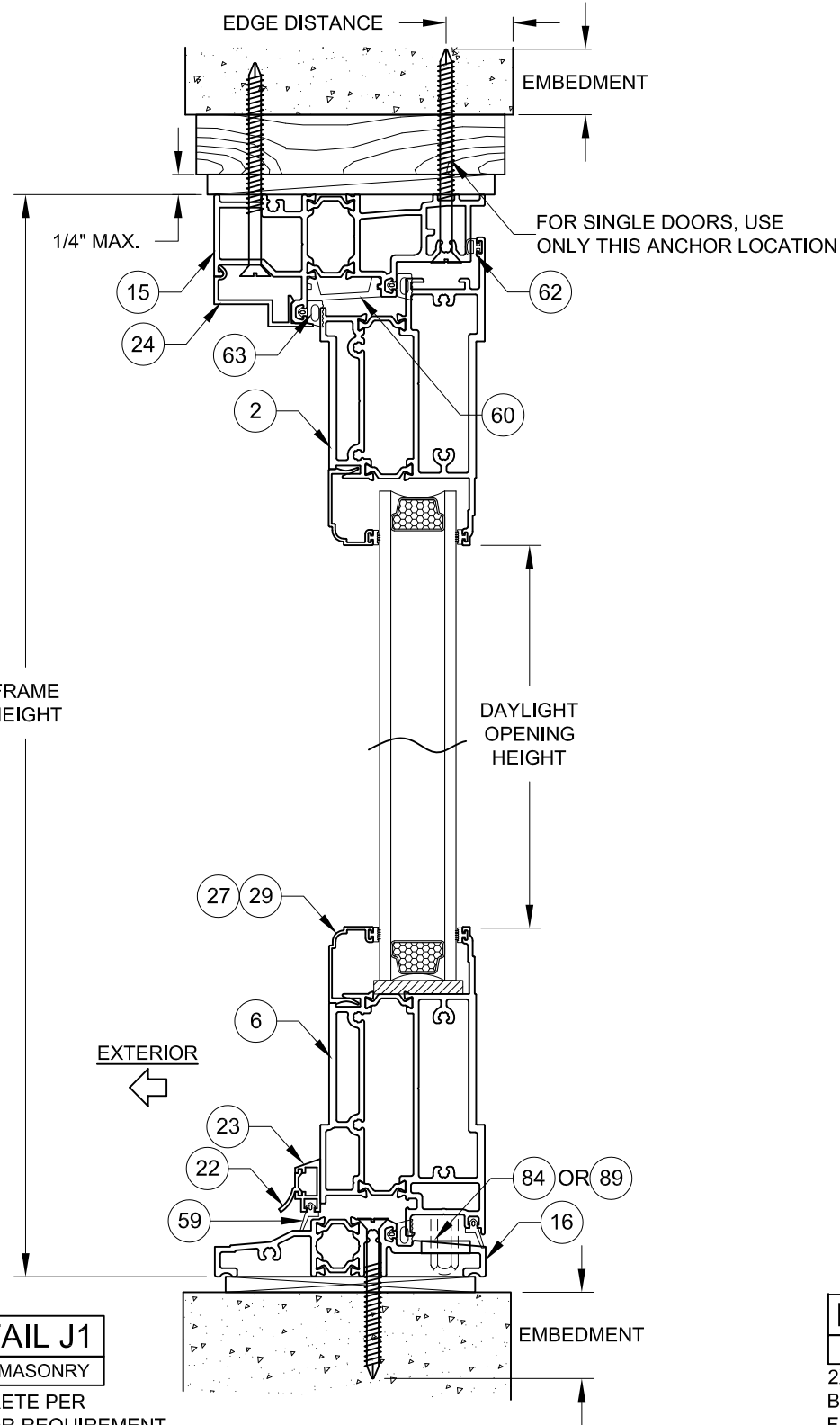
2) ALL WOOD BUCKS LESS THAN 1-1/2" THICK ARE TO BE CONSIDERED 1X INSTALLATIONS. 1X WOOD BUCKS ARE OPTIONAL. UNIT MAY BE INSTALLED DIRECTLY TO SUBSTRATE. WOOD BUCKS DEPICTED AS 2X ARE 1-1/2" THICK OR GREATER. 1X AND 2X BUCKS (WHEN USED) SHALL BE DESIGNED TO PROPERLY TRANSFER LOADS TO THE STRUCTURE. WOOD BUCK DESIGN AND INSTALLATION IS THE RESPONSIBILITY OF THE ENGINEER OR ARCHITECT OF RECORD.

Revision:

PREPARED BY A. LYNN MILLER 1070 TECHNOLOGY DRIVE N. VENICE, FL 34275 (941) 480-1600 COPYRIGHT © 2022 WINDOOR, INC. ALL RIGHTS RESERVED	Date	02/05/19	Drawn By JENS ROSOWSKI	Rev	A
	DWG No.	9050NITDI-1		Series	A
WINDOOR INCORPORATED WINDOOR INCORPORATED 104 TRIPLE DIAMOND BLVD. NORTH VENICE, FL 34275 (833) 554-5432	ALUMINUM IS/OS TERRACE DOOR (NI)		INSWING HORIZ. X-SECTION		Sheet 6 OF 9
Title TD9050		Desc.		No.	

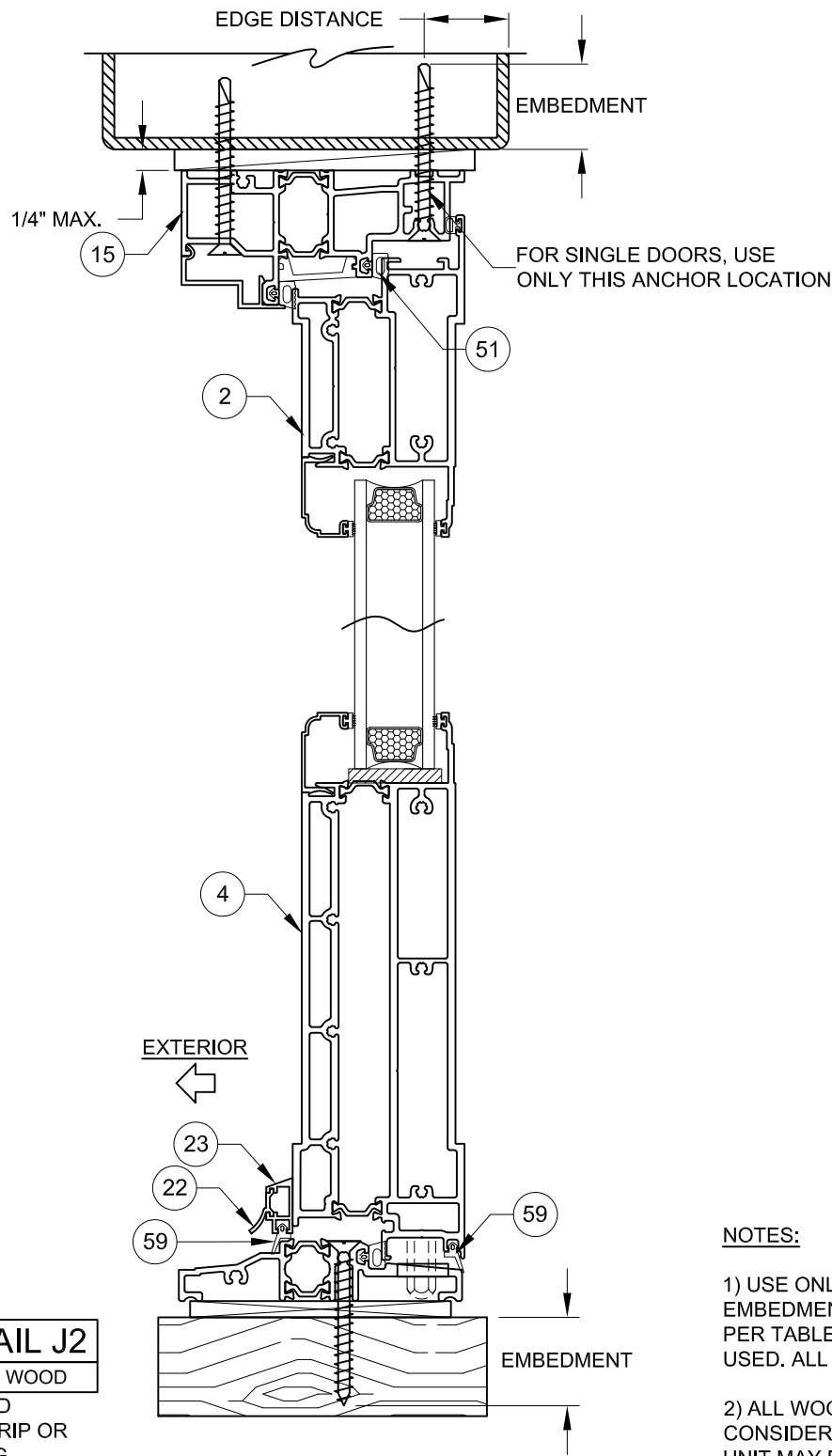
A. Lynn Miller 06/03/22
A. LYNN MILLER, P.E.
P.E.# 106954

DETAIL I1
1X WOOD BUCKSTRIP.
THRU 1X WOOD CONCRETE PER ANCHOR REQUIREMENT
INTO MASONRY



INSWING WITH STANDARD BOTTOM RAIL

DETAIL I2
APPROVED MULLION, ALUMINUM OR STEEL FRAMING.
INTO METAL



INSWING WITH TALL BOTTOM RAIL

NOTES:

1) USE ONLY SUBSTRATE APPROPRIATE ANCHORS, FOLLOW EMBEDMENT, EDGE DISTANCE AND SUBSTRATE REQUIREMENTS PER TABLE 1, SHEET 1. ANY INSTALLATION OPTION SHOWN MAY BE USED. ALL ANCHOR HEAD TYPES ARE ALLOWED.

2) ALL WOOD BUCKS LESS THAN 1-1/2" THICK ARE TO BE CONSIDERED 1X INSTALLATIONS. 1X WOOD BUCKS ARE OPTIONAL. UNIT MAY BE INSTALLED DIRECTLY TO SUBSTRATE. WOOD BUCKS DEPICTED AS 2X ARE 1-1/2" THICK OR GREATER. 1X AND 2X BUCKS (WHEN USED) SHALL BE DESIGNED TO PROPERLY TRANSFER LOADS TO THE STRUCTURE. WOOD BUCK DESIGN AND INSTALLATION IS THE RESPONSIBILITY OF THE ENGINEER OR ARCHITECT OF RECORD.

DETAIL J1
INTO MASONRY
CONCRETE PER ANCHOR REQUIREMENT

DETAIL J2
INTO WOOD
2X WOOD BUCKSTRIP OR FRAMING

Revision:

PREPARED BY A. LYNN MILLER 1070 TECHNOLOGY DRIVE N. VENICE, FL 34275 (941) 480-1600	COPYRIGHT © 2022 WINDOOR, INC. ALL RIGHTS RESERVED	Date	02/05/19
		By	JENS ROSOWSKI
WINDOOR INCORPORATED WINDOOR INCORPORATED 104 TRIPLE DIAMOND BLVD. NORTH VENICE, FL 34275 (833) 554-5432	ALUMINUM IS/OS TERRACE DOOR (NI) INTSWING VERT. X-SECTION	DWG No.	9050NITDI-1
		Sheet	7 OF 9
Series	TD9050	Rev	A



A. Lynn Miller 06/03/22
A. LYNN MILLER, P.E.
P.E.# 106954

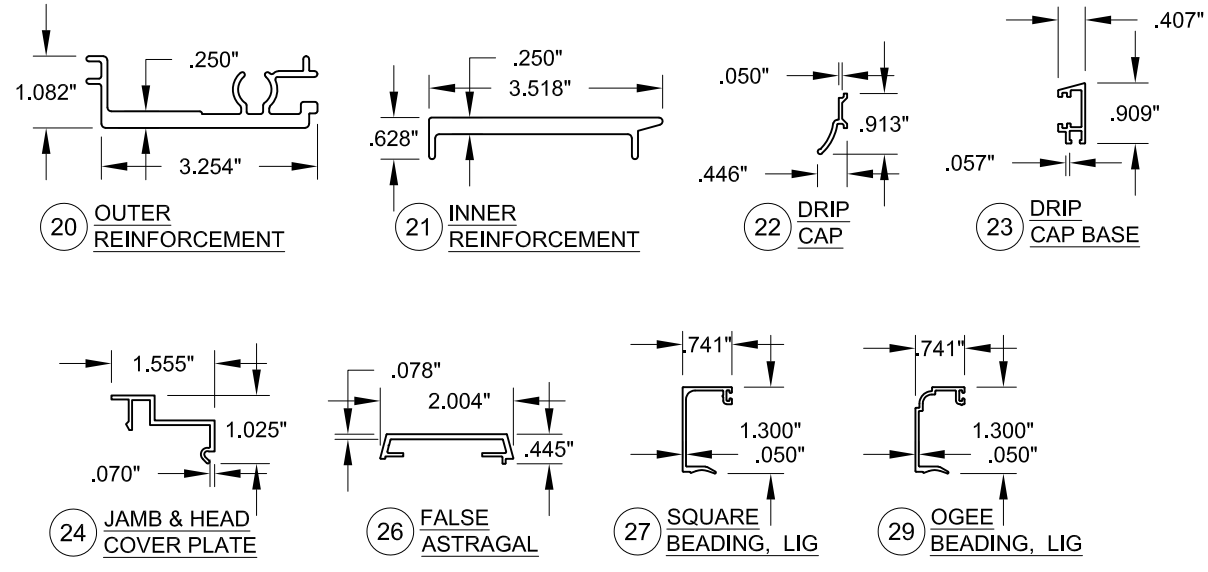
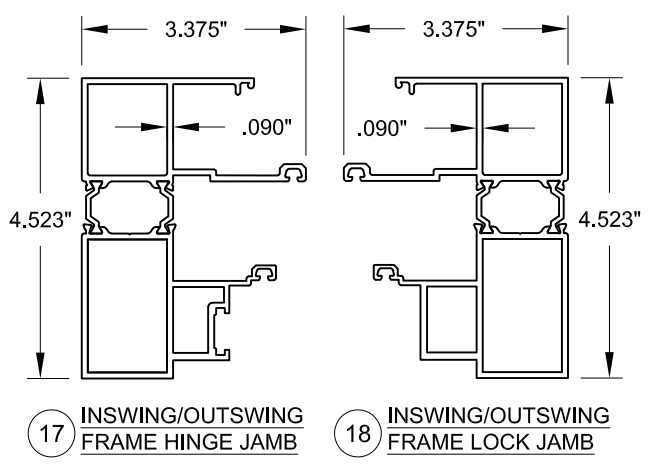
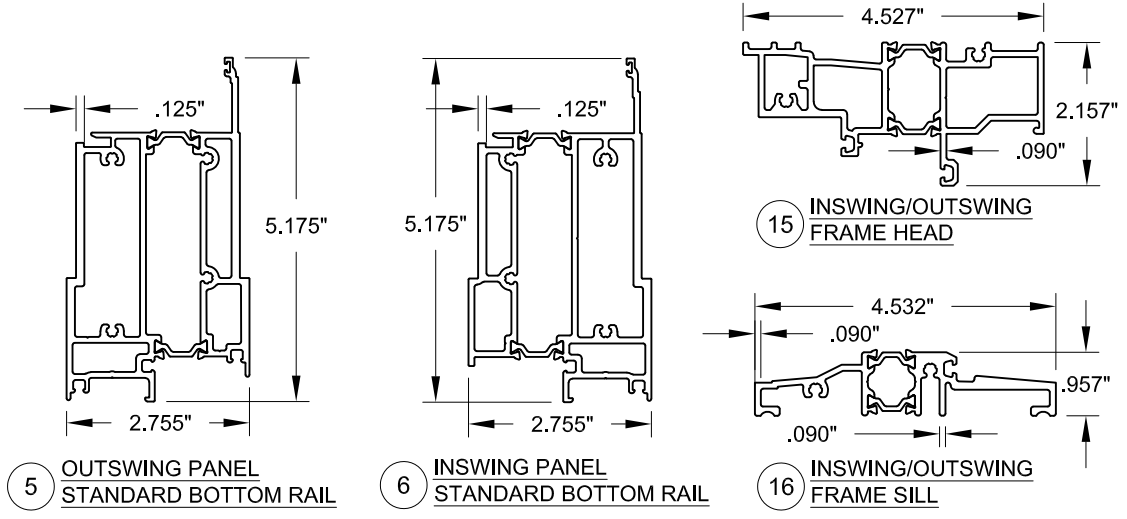
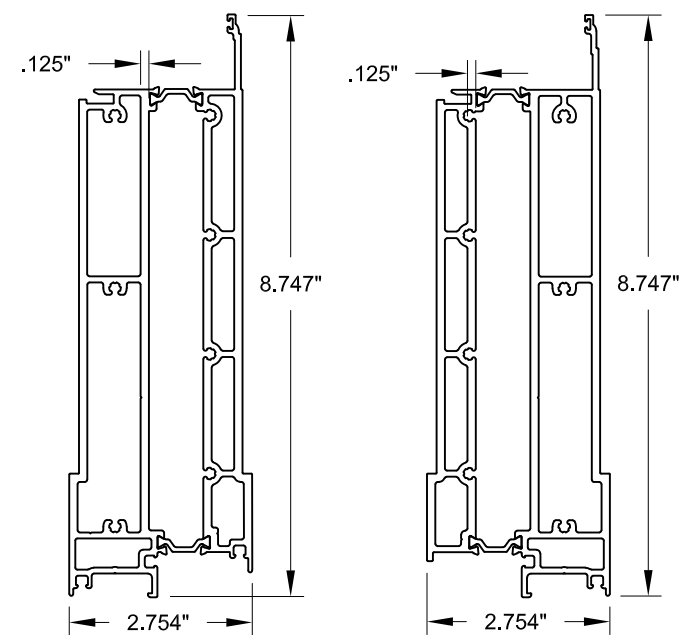
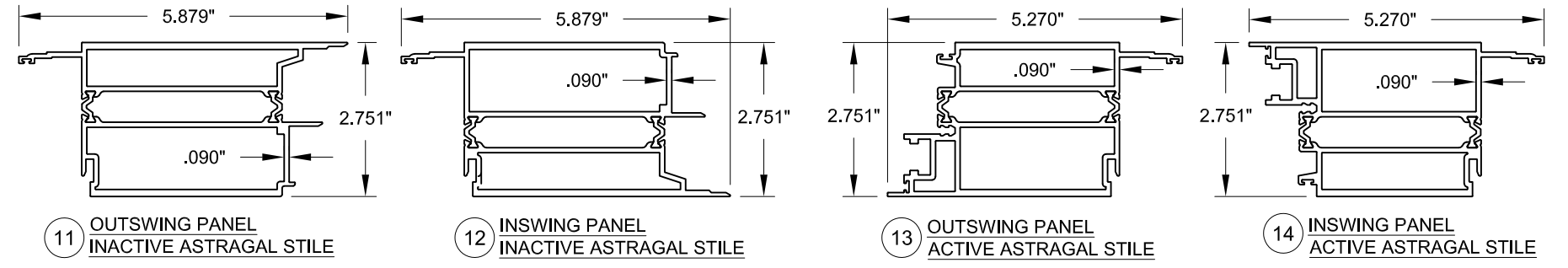
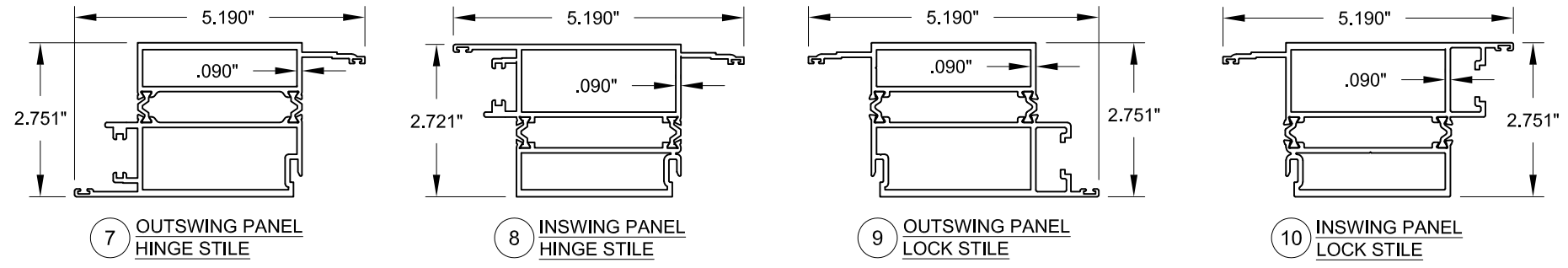
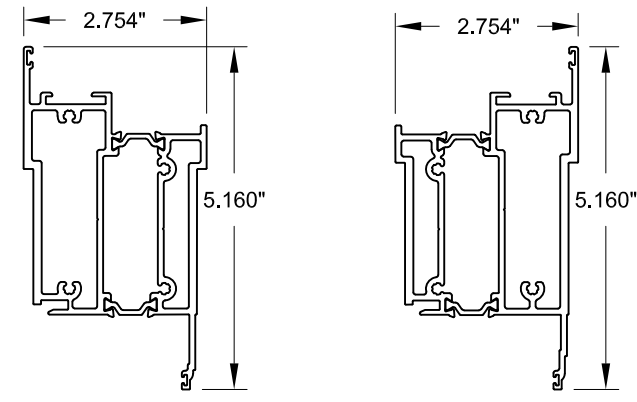


TABLE 4:

#	Part #	Description	Material
1	130905A36	Outswing Panel Top Rail	6063 -T6
2	130905A26	Inswing Panel Top Rail	6063 -T6
3	130905A38	Outswing Panel High Bottom Rail	6063 -T6
4	130905A28	Inswing Panel High Bottom Rail	6063 -T6
5	130905A37	Outswing Panel Standard Bottom Rail	6063 -T6
6	130905A27	Inswing Panel Standard Bottom Rail	6063 -T6
7	130905A03	Outswing Panel Hinge Stile	6063 -T6
8	130905A04	Inswing Panel Hinge Stile	6063 -T6
9	13010447	Outswing Panel Lock Stile	6063 -T6
10	13010450	Inswing Panel Lock Stile	6063 -T6
11	130905A18	Outswing Panel Inactive Panel Stile	6063 -T6
12	130905A20	Inswing Panel Inactive Panel Stile	6063 -T6
13	130905A17	Outswing Panel Active Panel Stile	6063 -T6
14	130905A19	Inswing Panel Active Panel Stile	6063 -T6
15	130905A32	Inswing/Outswing Frame Head	6063 -T6
16	130905A34	Inswing/Outswing Frame Sill	6063 -T6
17	130905A21	Inswing/Outswing Frame Hinge Jamb	6063 -T6
18	13010440	Inswing/Outswing Frame Lock Jamb	6063 -T6
20	11006862	Outer Reinforcement	6063 -T6
21	11006863	Inner Reinforcement	6063 -T6
22	11060646	Drip Cap/Sweep	6063 -T6
23	11060647	Drip Cap/Sweep Base	6063 -T6
24	11046085	Jamb & Head Cover Plate	6063 -T6
26	11010287	False Astragal	6063 -T6
27	11052598	Square Beading, LIG	6063 -T6
29	11046084	Ogee Beading, LIG	6063 -T6

Revision:

--	--

PREPARED BY A. LYNN MILLER
1070 TECHNOLOGY DRIVE
N. VENICE, FL 34275
(941) 480-1600
COPYRIGHT © 2022 WINDOOR, INC.
ALL RIGHTS RESERVED

WINDOOR
INCORPORATED
WINDOOR INCORPORATED
104 TRIPLE DIAMOND BLVD.
NORTH VENICE, FL 34275
(833) 554-5432

ALUMINUM IS/OS TERRACE DOOR (NI)
EXTRUSIONS & BOM

Date	02/05/19
By	JENS ROSOWSKI
No.	9050NITDI-1
Rev	A
Sheet	8 OF 9
DWG	TD9050

STATE OF TEXAS
ANTHONY LYNN MILLER
106954
LICENSED PROFESSIONAL ENGINEER

A. Lynn Miller 06/03/22
A. LYNN MILLER, P.E.
P.E.# 106954

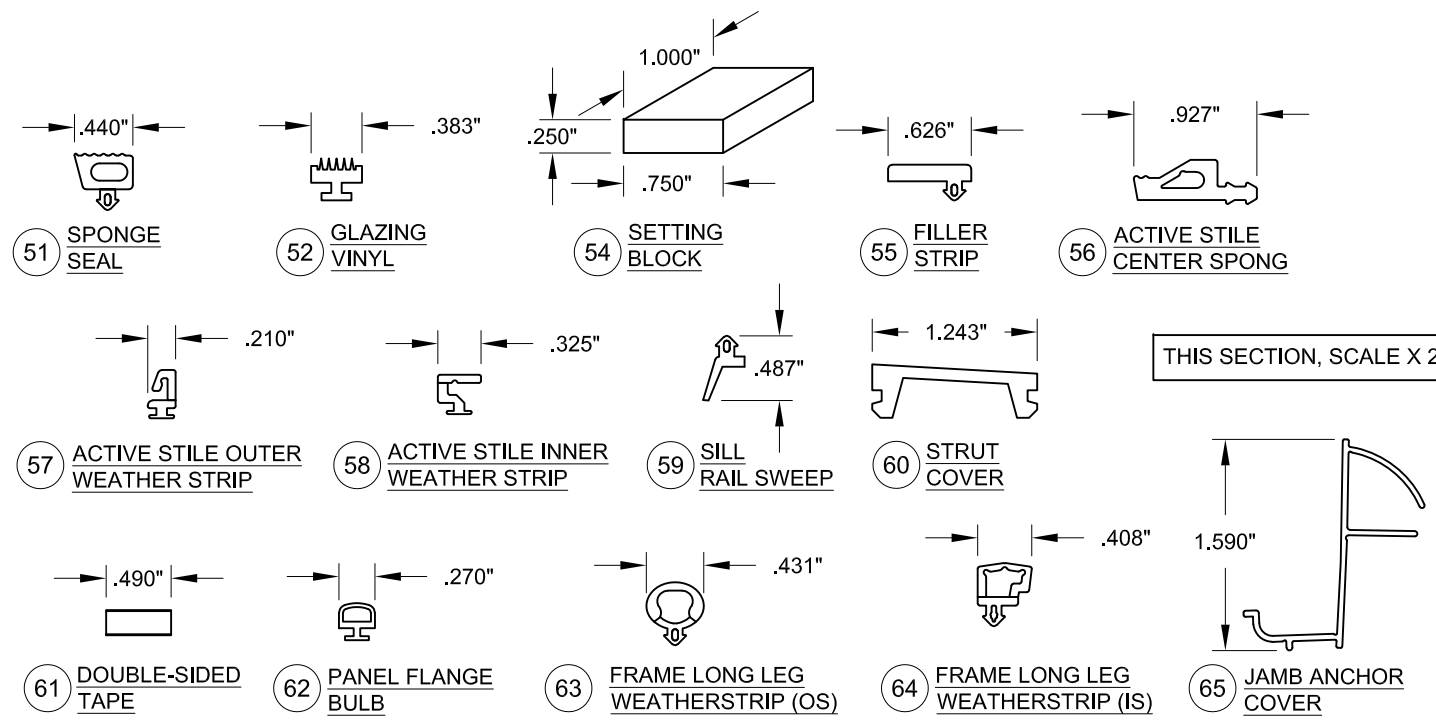


TABLE 5:

#	Part #	Description	Material
40		Kommerling KodiSpace 4SG TPS	varies
41		Quanex SuperSpacer	varies
42		Metal Spacer	varies
43		Sika 552 Backbedding	
51	W9050-BL-9100E	Sponge Seal, 905VP-22-SEAL	EPDM
52	121006/121007	Glazing Vinyl	EPDM, 80 Duro.
54	121001	Setting Block, 1/4" x 3/4" x 1"	Neoprene, 80 Duro.
55	15303	Filler Strip, TP-448	PVC, 92 Duro.
56	W9050-BL-54576	Active Stile Center Sponge	
57	W9050-BL-3911	Active Stile Outer Weatherstrip, Co-ex.	EPDM, 80 Duro.
58	W9050-BL-3912	Active Stile Inner Weatherstrip, Co-ex.	EPDM, 80 Duro.
59	17010491	Sill Rail Sweep, Black	Santoprene
60	W9050-BL-9102E	Strut Cover	
61	15005	Double-sided Astragal Tape	Adhesive Foam
62	15103	Panel Flange Bulb	EPDM, 80 Duro.
63	15187	Frame Long Leg Weatherstrip (OS)	EPDM, 80 Duro.
64	W9050-BL-3913	Frame Long Leg Weatherstrip (IS)	EPDM, 80 Duro.
65	10236	Jamb Anchor Cover	PVC, 92 Duro
66		#8 x 1" Ph SQ SMS (Panel Assembly)	SS
67	140008	#10 x 3/4" Ph FH SMS (Sill/Head Strike Plates)	SS
68		#10 x 3/4" Ph FH Tek SMS (Shoot Bolt Plate)	SS
69		#10 x 1-1/4" Ph SQ SMS (Frame Assembly)	SS

HARDWARE ELEVATION

DOUBLE (XX) DOOR SHOWN,
SINGLE (X) DOOR SIMILAR.

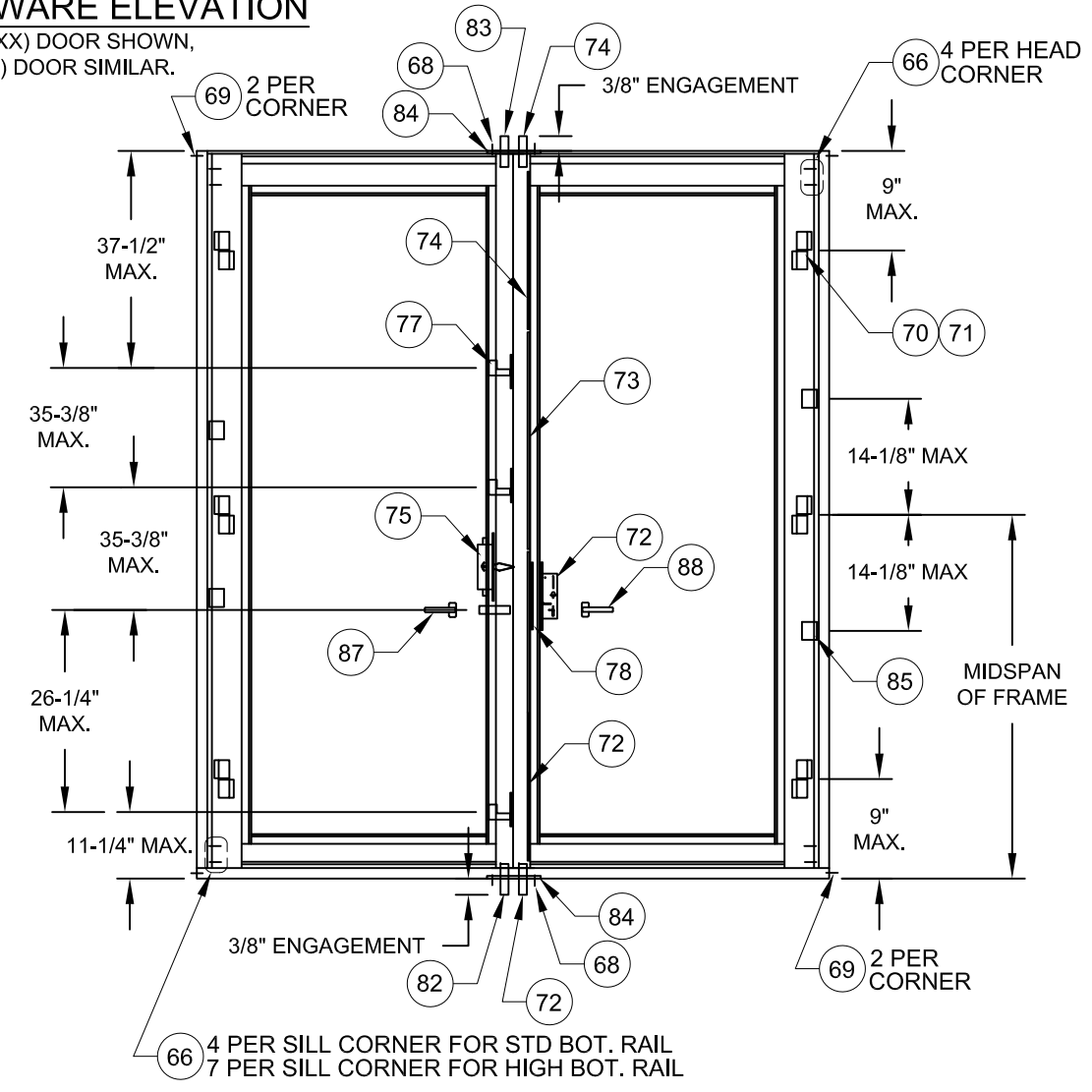


TABLE 6:

#	Part #	Description	Manufacturer
70	H9050-XX-4637M	Flash XXL Door Hinge	Giesse
71	H9050-XX-0599M	Hinge Covers	Giesse
72	H9050-GEAR-1728	Bottom Extension with Gear, Lock, Lower Swing Hook & Shoot Bolt	Hoppe
73	3622833	Middle Extension with 2 Swing Hooks	Hoppe
74	8778627	Top Extension with Shoot Bolt	Hoppe
75	H9050-FB-2267	Mortise Flushbolt, Inactive Panel	Hoppe
77	H9050-SH-2884	Hook Latch Strike Plate, SS	Seljan
78	H9050-LH-2902 H9050-RH-2905	LH/RH Latch & Deadbolt Strike Plate, SS	Seljan
79	H9050-RP-2913	Shoot Bolt reinforcing Plate, SS	Seljan
80	H9050-SPADA-3921	Shoot Bolt reinforcing Shim	Seljan
81	1900908	10mm Standard Rod Guides	Hoppe
82	8759551	10mm Lower Flush Bolt Rod	Hoppe
83	8786867	10mm Upper Flush Bolt Rod	Hoppe
84	H9050-SP-2948D	Twin Shoot Bolt Head & Sill Strike Plate, SS	Seljan
85	H9050-XX1445M	Snubber Driver	Advantage
86	905VP-20	Ramp Block	
87	Varies	False Handle & Trim Set	Varies
88	Varies	Handle & Trim Set with Lock Cylinder & Thumb Turn	Hoppe/Giesse
89	H9050-SP-275	Single Shoot Bolt Head & Sill Strike Plate, SS	Seljan

Revision:

--	--

PREPARED BY A. LYNN MILLER 1070 TECHNOLOGY DRIVE N. VENICE, FL 34275 (941) 480-1600 COPYRIGHT © 2022 WINDOOR, INC. ALL RIGHTS RESERVED	Date	02/05/19
	By	JENS ROSOWSKI
WINDOOR INCORPORATED WINDOOR INCORPORATED 104 TRIPLE DIAMOND BLVD. NORTH VENICE, FL 34275 (833) 554-5432	DWG No.	9050NITDI-1
	Sheet	9 OF 9
Series	ALUMINUM IS/OS TERRACE DOOR (NI)	A
Desc.	MISC. PARTS & BOM	
		TD9050

Anthony Lynn Miller
 06/03/22
 A. LYNN MILLER, P.E.
 P.E.# 106954