

| REVISIONS |                              |            |          |
|-----------|------------------------------|------------|----------|
| REV       | DESCRIPTION                  | DATE       | APPROVED |
| A         | UPDATED COMPONENTS & DETAILS | 08/13/18   | R.L.     |
| B         | REVISED PER NEW CODE         | 02/10/2021 | R.L.     |

NOTES:

1. THE PRODUCT SHOWN HEREIN IS DESIGNED AND MANUFACTURED TO COMPLY WITH REQUIREMENTS OF THE 2018 IBC AND 2018 IRC.
2. WOOD FRAMING AND MASONRY OPENING TO BE DESIGNED AND ANCHORED TO PROPERLY TRANSFER ALL LOADS TO STRUCTURE. FRAMING AND MASONRY OPENING IS THE RESPONSIBILITY OF THE ARCHITECT OR ENGINEER OF RECORD.
3. 1X BUCK OVER MASONRY/CONCRETE IS OPTIONAL.
4. WHERE SHIM OR BUCK THICKNESS IS LESS THAN 1-1/2" WINDOW UNITS MUST BE ANCHORED THROUGH THE FRAME IN ACCORDANCE WITH MANUFACTURER'S PUBLISHED INSTALLATION INSTRUCTIONS. ANCHORS SHALL BE SECURELY FASTENED DIRECTLY INTO MASONRY, CONCRETE OR OTHER STRUCTURAL SUBSTRATE MATERIAL.
5. WHERE WOOD BUCK THICKNESS IS 1-1/2" OR GREATER, BUCK SHALL BE SECURELY FASTENED TO MASONRY, CONCRETE OR OTHER STRUCTURAL SUBSTRATE. WINDOW UNITS MAY BE ANCHORED THROUGH FRAME TO SECURED WOOD BUCK IN ACCORDANCE WITH MANUFACTURER'S PUBLISHED INSTALLATION INSTRUCTIONS.
6. WHERE 1X BUCK IS NOT USED DISSIMILAR MATERIALS MUST BE SEPARATED WITH APPROVED COATING OR MEMBRANE. SELECTION OF COATING OR MEMBRANE IS THE RESPONSIBILITY OF THE ARCHITECT OR ENGINEER OF RECORD.
7. BUCKS SHALL EXTEND BEYOND WINDOW INTERIOR FACE SO THAT FULL FRAME SUPPORT IS PROVIDED.
8. SHIM AS REQUIRED AT EACH ANCHOR LOCATION WITH LOAD BEARING SHIM. SHIM WHERE SPACE OF 1/16" OR GREATER OCCURS. MAXIMUM ALLOWABLE SHIM STACK TO BE 1/4".
9. SHIMS SHALL BE LOCATED, APPLIED AND MADE FROM MATERIALS AND THICKNESS CAPABLE OF SUSTAINING APPLICABLE LOADS.
10. WIND LOAD DURATION FACTOR Cd=1.6 WAS USED FOR WOOD ANCHOR CALCULATIONS.
11. FRAME MATERIAL: CO-EXTRUDED PVC FOAM.
12. UNITS MUST BE GLAZED PER ASTM E1300, SEE SHEET 2 FOR GLASS DETAILS.
13. APPROVED IMPACT PROTECTIVE SYSTEM IS NOT REQUIRED FOR THIS PRODUCT IN WIND BORNE DEBRIS REGIONS.

14. FOR ANCHORING INTO WOOD FRAMING OR 2X BUCK USE #10 WOOD SCREWS WITH SUFFICIENT LENGTH TO ACHIEVE A 1 1/4" MINIMUM EMBEDMENT INTO SUBSTRATE. LOCATE ANCHORS AS SHOWN IN ELEVATIONS AND INSTALLATION DETAILS.
15. FOR ANCHORING INTO MASONRY/CONCRETE USE 3/16" TAPCONS WITH SUFFICIENT LENGTH TO ACHIEVE A 1 1/4" MINIMUM EMBEDMENT INTO SUBSTRATE WITH 2" MINIMUM EDGE DISTANCE. LOCATE ANCHORS AS SHOWN IN ELEVATIONS AND INSTALLATION DETAILS.
16. FOR ANCHORING INTO METAL STRUCTURE USE #10 SMS OR SELF DRILLING SCREWS WITH SUFFICIENT LENGTH TO ACHIEVE 3 THREADS MINIMUM BEYOND STRUCTURE INTERIOR WALL. LOCATE ANCHORS AS SHOWN IN ELEVATIONS AND INSTALLATION DETAILS.
17. ALL FASTENERS TO BE CORROSION RESISTANT.
18. INSTALLATION ANCHORS SHALL BE INSTALLED IN ACCORDANCE WITH ANCHOR MANUFACTURER'S INSTALLATION INSTRUCTIONS AND ANCHORS SHALL NOT BE USED IN SUBSTRATES WITH STRENGTHS LESS THAN THE MINIMUM STRENGTH SPECIFIED BELOW:
  - A. WOOD – MINIMUM SPECIFIC GRAVITY OF G=0.42
  - B. CONCRETE – MINIMUM COMPRESSIVE STRENGTH OF 3,192 PSI.
  - C. MASONRY – STRENGTH CONFORMANCE TO ASTM C-90, GRADE N, TYPE 1 (OR GREATER).
  - D. METAL STRUCTURE: STEEL 18GA, 33KSI OR ALUMINUM 6063-T5 .125" THICK MINIMUM
19. APPROVED CONFIGURATIONS: X, OX, XO, X/O, O/X, XX, OXX, XXO, O/XX, XX/O, OXO, O/XO, OX/O, O/XXO, OXX/O AND OXXO, SEE SHEET 3.
20. SIDELITES ARE ASSEMBLED TO FRAME WITH #10 X 2 1/2" WOOD SCREWS LOCATED 4" FROM EACH END AND 26 7/8" MAX O.C. THEREAFTER AT JAMBS AND 4" FROM EACH END AND ONE AT MIDSPAN AT HEAD AND SILL.

| TABLE OF CONTENTS |                            |
|-------------------|----------------------------|
| SHEET NO.         | DESCRIPTION                |
| 1                 | NOTES                      |
| 2                 | ELEVATION & GLAZING DETAIL |
| 3                 | APPROVED CONFIGURATIONS    |
| 4 – 5             | ANCHORING LAYOUTS          |
| 6 – 13            | INSTALLATION DETAILS       |
| 14 – 15           | COMPONENTS                 |

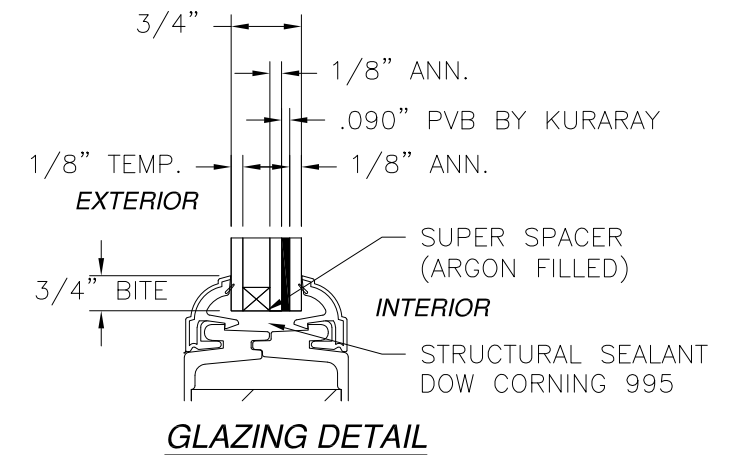
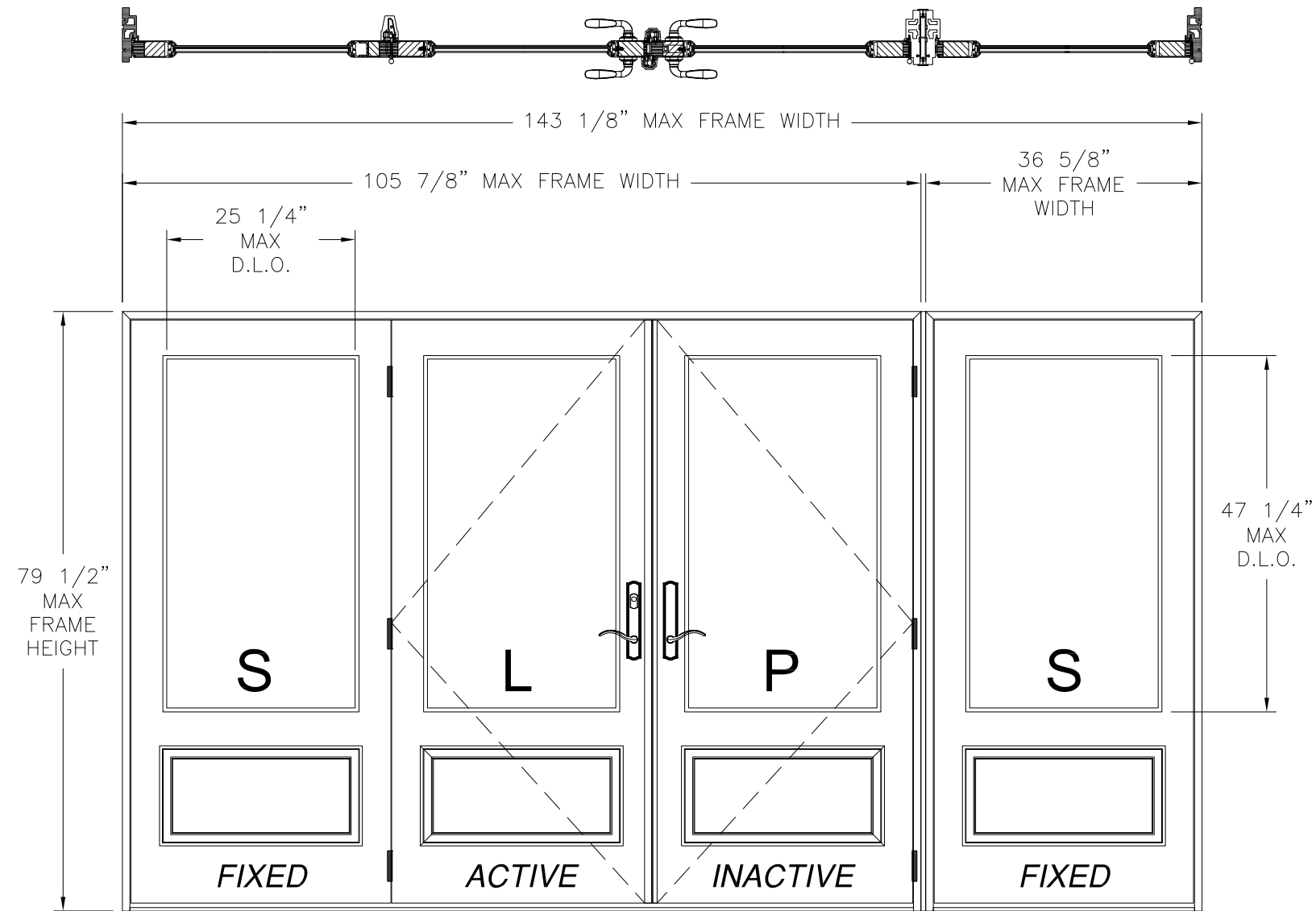
|   |                     |               |
|---|---------------------|---------------|
| <b>NAN YA PLASTICS CORP. USA</b><br>8989 NORTH LOOP EAST<br>HOUSTON, TX 77029                       |                     |               |
| SERIES SLPS 3/4 LITE FIBERGLASS<br>OUT-SWING PATIO DOOR – IMPACT<br>NOTES                           |                     |               |
| DRAWN:<br>V.L.  | DWG NO.<br>08-02312 | REV<br>B      |
| SCALE NTS   | DATE 10/16/14       | SHEET 1 OF 15 |
| L. ROBERTO LOMAS P.E.<br>1432 WOODFORD RD LEWISVILLE, NC 27023<br>434-688-0609 rllomas@rlomaspe.com |                     |               |

SIGNED: 02/10/2021



Luis R. Lomas P.E.  
TX No.: 101889

| REVISIONS |                              |            |          |
|-----------|------------------------------|------------|----------|
| REV       | DESCRIPTION                  | DATE       | APPROVED |
| A         | UPDATED COMPONENTS & DETAILS | 08/13/18   | R.L.     |
| B         | REVISED PER NEW CODE         | 02/10/2021 | R.L.     |



**SERIES SLPS 12068 OS**  
**3/4 LITE FIBERGLASS PATIO DOOR**  
 EXTERIOR VIEW

| DESIGN PRESSURE RATING | IMPACT RATING                  |
|------------------------|--------------------------------|
| ±50.0PSF               | LARGE AND SMALL MISSILE IMPACT |

MISSILE LEVEL D, WIND ZONE 4

**HARDWARE SCHEDULE**

|    |   |
|----|---|
| A. | (3) STEEL 4X4 DOOR HINGE, AT HINGE JAMB AND INTEGRAL MULLION, 7 5/8", 37 7/8" AND 68 1/8" FROM FRAME HEAD           |
| B. | STAINLESS STEEL MULTI-POINT (3) LOCKING SYSTEM WITH KEEPER, 7 1/8", 39" AND 71 1/4" FROM FRAME HEAD AT ACTIVE PANEL |
| C. | STAINLESS STEEL TOP/BOTTOM DRIVE BAR SYSTEM AT ACTIVE PANEL   |
| D. | DIE CAST HANDLE SETS AT ACTIVE AND PASSIVE PANELS   |
| E. | ALUMINUM REINFORCEMENT-A, AT INTERIOR AND EXTERIOR ASTRAGAL   |
| F. | ALUMINUM REINFORCEMENT-B, AT INTEGRAL MULLION EXTERIOR  |

SIGNED: 02/10/2021

NAN YA PLASTICS CORP. USA  
 8989 NORTH LOOP EAST  
 HOUSTON, TX 77029

SERIES SLPS 3/4 LITE FIBERGLASS  
 OUT-SWING PATIO DOOR - IMPACT  
 ELEVATION

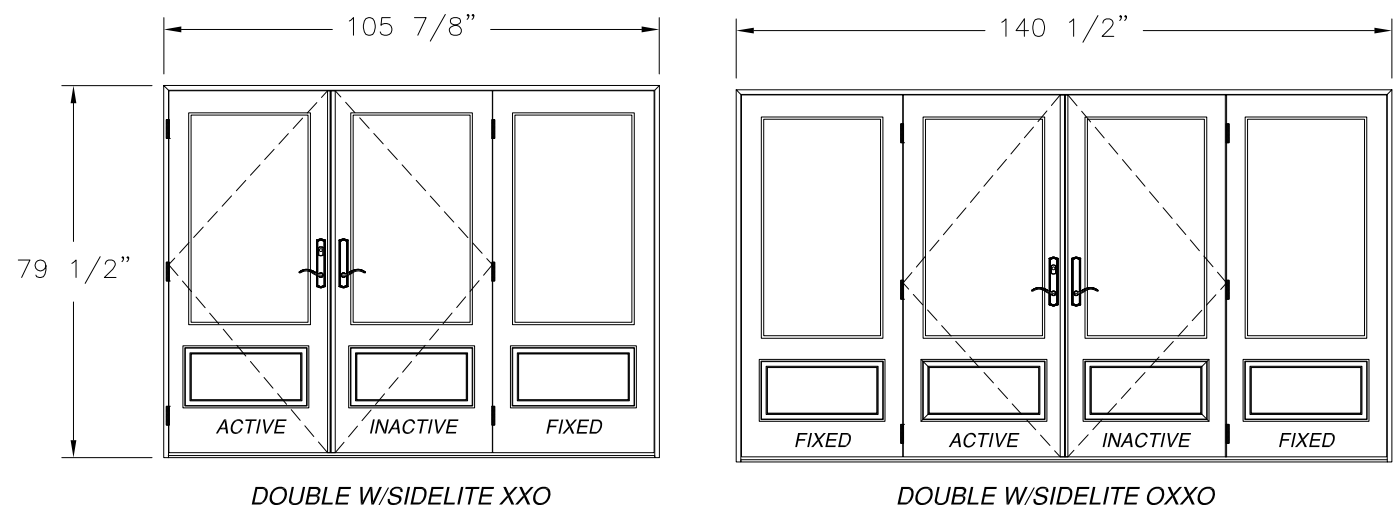
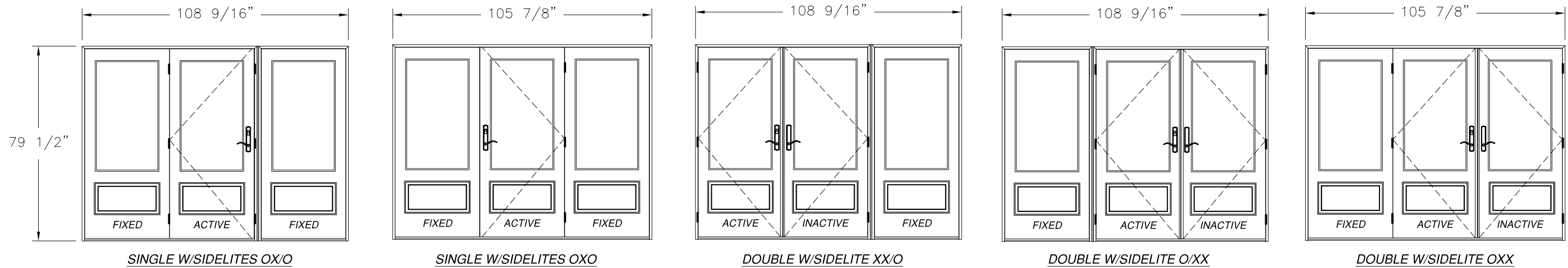
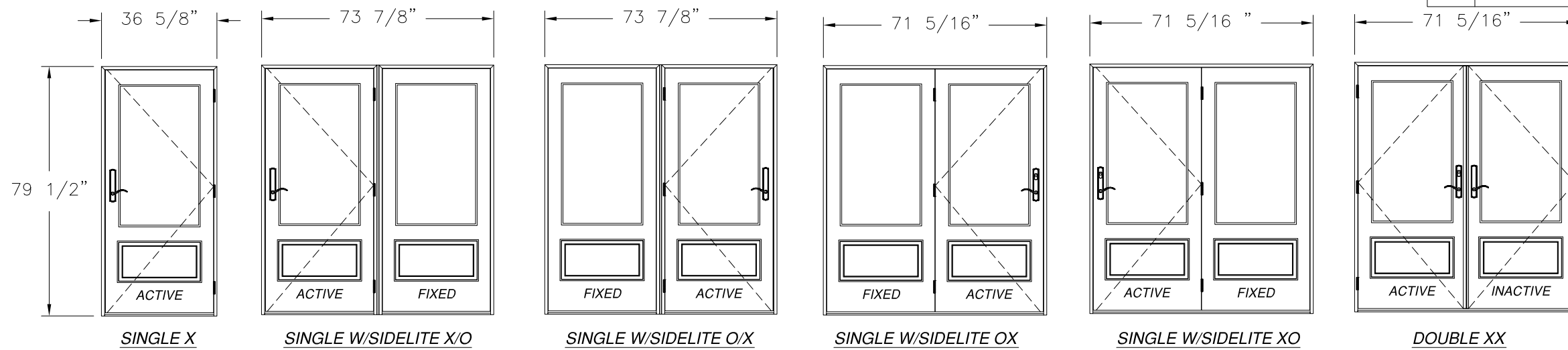
|                |                     |               |
|----------------|---------------------|---------------|
| DRAWN:<br>V.L. | DWG NO.<br>08-02312 | REV<br>B      |
| SCALE NTS      | DATE 10/16/14       | SHEET 2 OF 15 |

L. ROBERTO LOMAS P.E.  
 1432 WOODFORD RD LEWISVILLE, NC 27023  
 434-688-0609 rllomas@rlomaspe.com



Luis R. Lomas P.E.  
 TX No.: 101889

| REVISIONS |                              |            |          |
|-----------|------------------------------|------------|----------|
| REV       | DESCRIPTION                  | DATE       | APPROVED |
| A         | UPDATED COMPONENTS & DETAILS | 08/13/18   | R.L.     |
| B         | REVISED PER NEW CODE         | 02/10/2021 | R.L.     |



NAN YA PLASTICS CORP. USA  
 8989 NORTH LOOP EAST  
 HOUSTON, TX 77029

SERIES SLPS 3/4 LITE FIBERGLASS  
 OUT-SWING PATIO DOOR - IMPACT  
 ADDITIONAL APPROVED CONFIGURATIONS

|                |                     |               |
|----------------|---------------------|---------------|
| DRAWN:<br>V.L. | DWG NO.<br>08-02312 | REV<br>B      |
| SCALE NTS      | DATE 10/16/14       | SHEET 3 OF 15 |

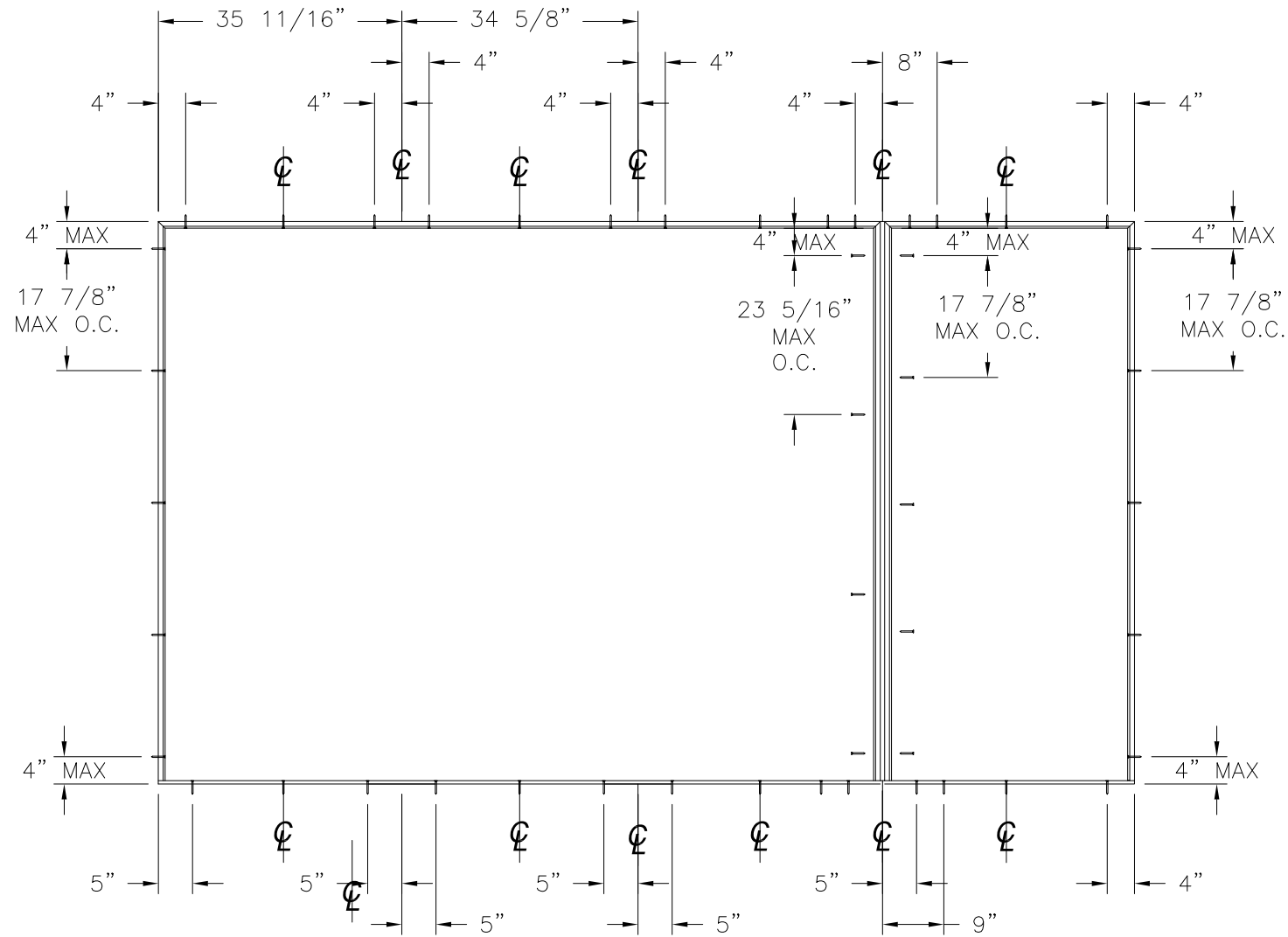
L. ROBERTO LOMAS P.E.  
 1432 WOODFORD RD LEWISVILLE, NC 27023  
 434-688-0609 rllomas@rlomaspe.com

SIGNED: 02/10/2021

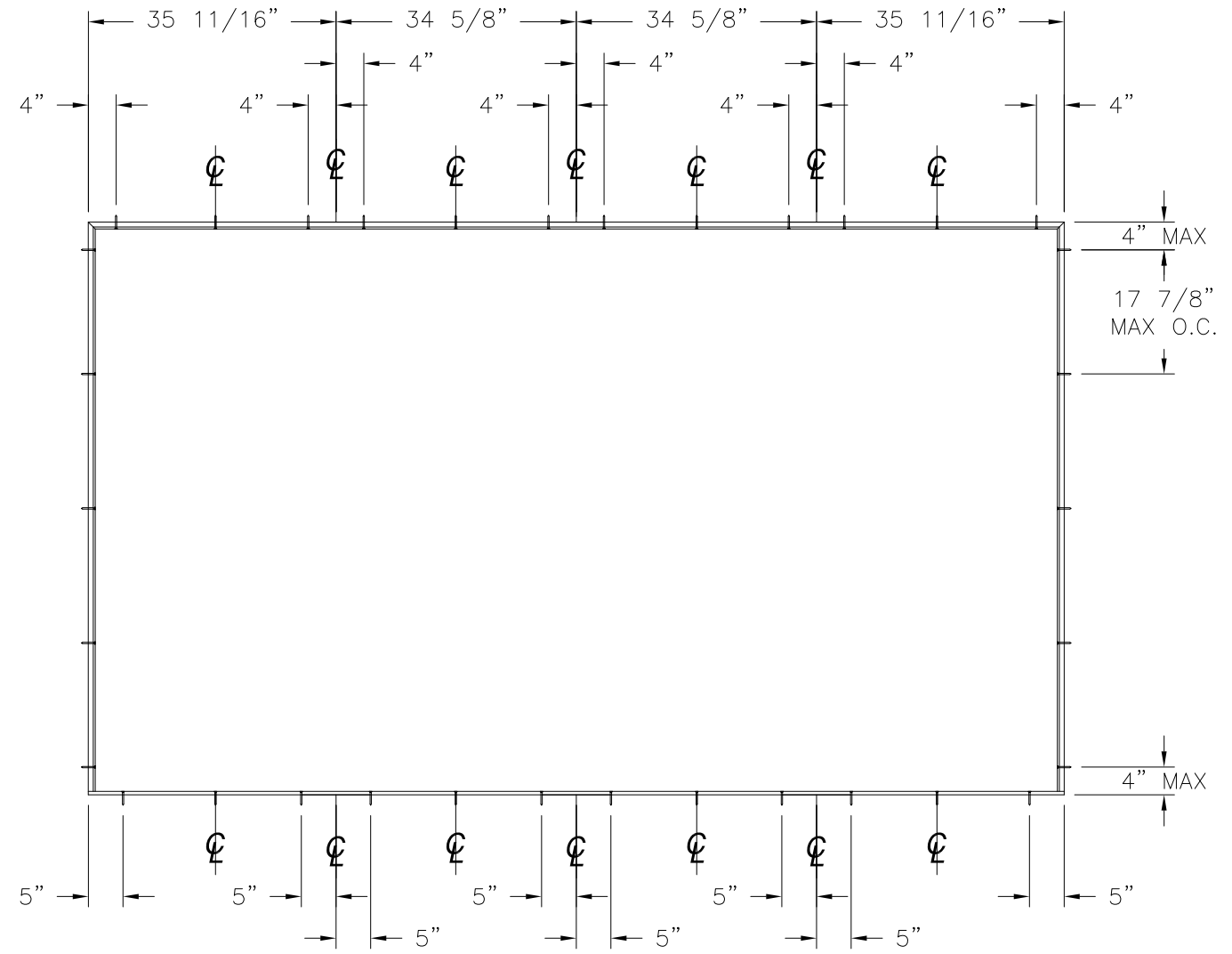


Luis R. Lomas P.E.  
 TX No.: 101889

| REVISIONS |                              |            |          |
|-----------|------------------------------|------------|----------|
| REV       | DESCRIPTION                  | DATE       | APPROVED |
| A         | UPDATED COMPONENTS & DETAILS | 08/13/18   | R.L.     |
| B         | REVISED PER NEW CODE         | 02/10/2021 | R.L.     |



ANCHORING LAYOUT FOR O/XXO, OXX/O



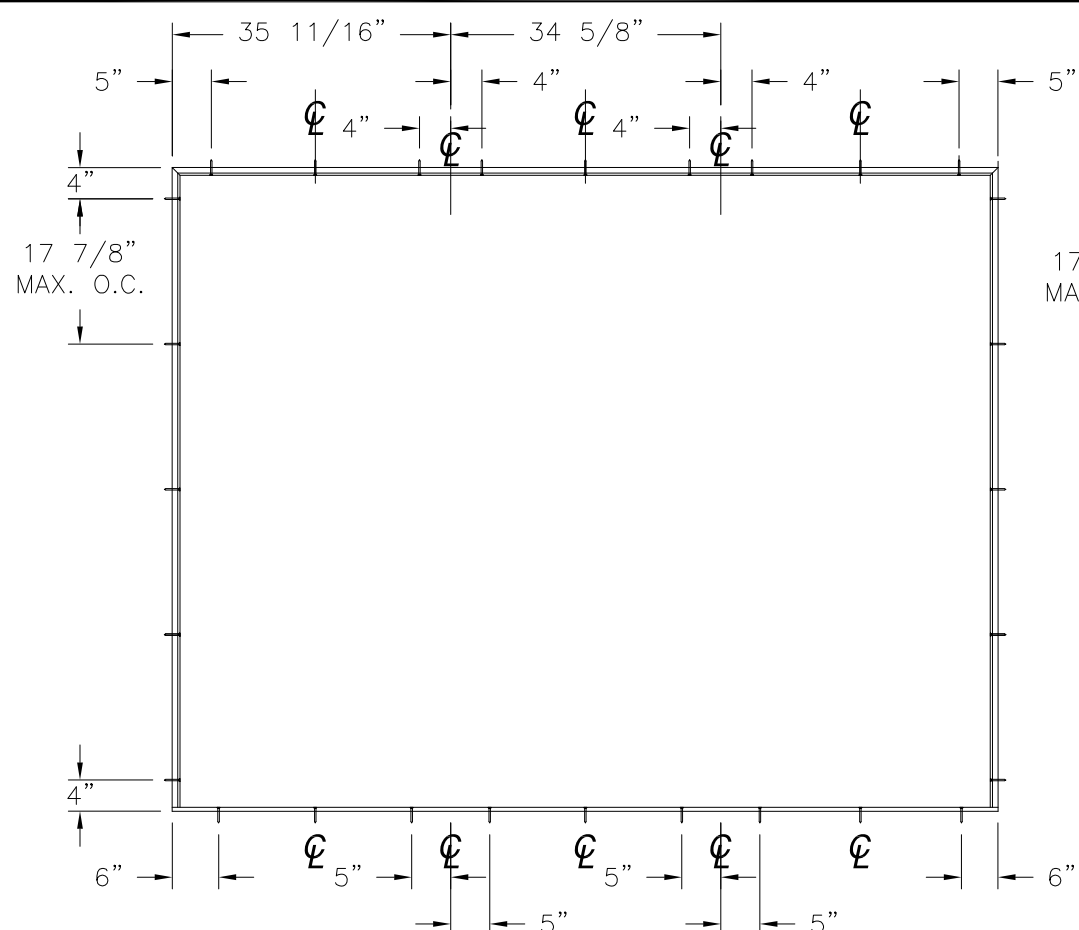
ANCHORING LAYOUT FOR OXXO

SIGNED: 02/10/2021

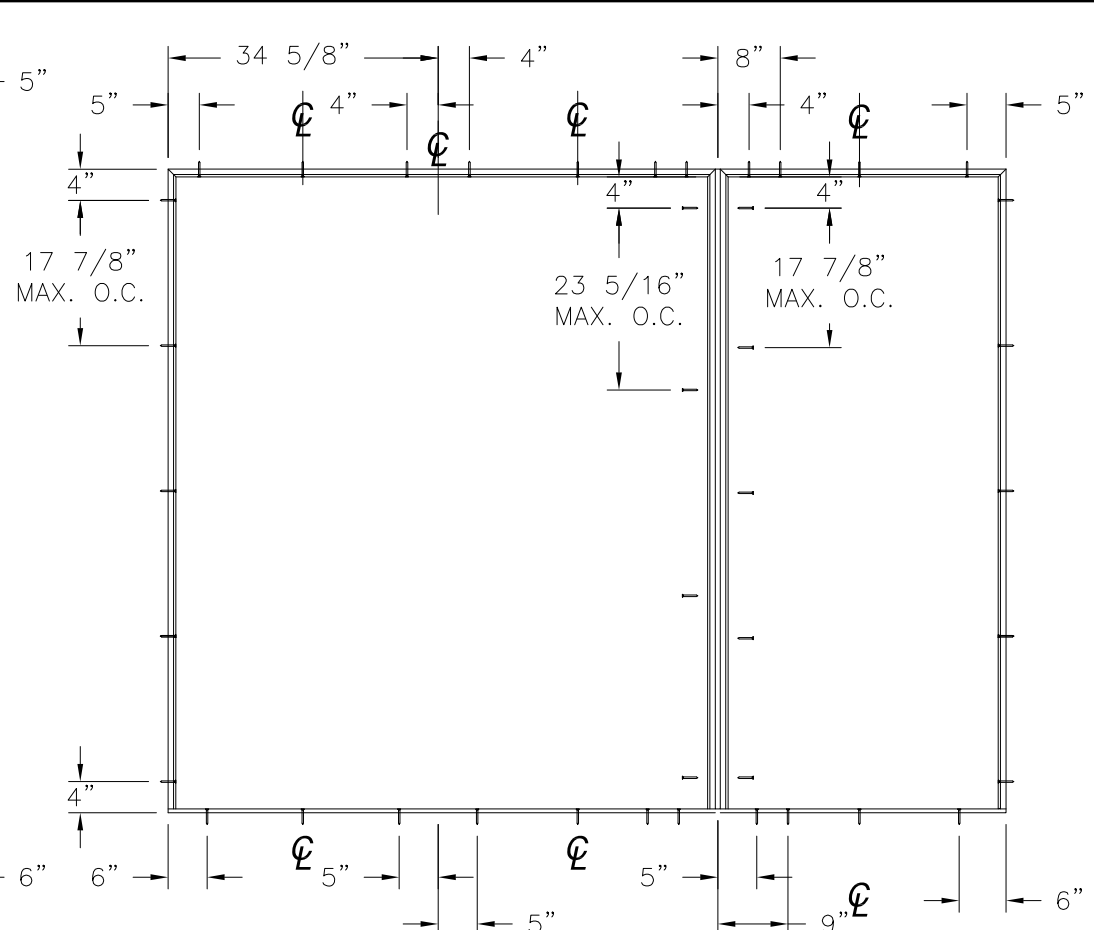
|   |                             |                      |
|---|-----------------------------|----------------------|
| <p>NAN YA PLASTICS CORP. USA<br/>8989 NORTH LOOP EAST<br/>HOUSTON, TX 77029</p>                               |                             |                      |
| <p>SERIES SLPS 3/4 LITE FIBERGLASS<br/>OUT-SWING PATIO DOOR – IMPACT<br/>ANCHORING LAYOUT</p>                 |                             |                      |
| <p>DRAWN:<br/>V.L.</p>  | <p>DWG NO.<br/>08-02312</p> | <p>REV<br/>B</p>     |
| <p>SCALE NTS</p>  | <p>DATE 10/16/14</p>        | <p>SHEET 4 OF 15</p> |
| <p>L. ROBERTO LOMAS P.E.<br/>1432 WOODFORD RD LEWISVILLE, NC 27023<br/>434-688-0609 rllomas@lrlomaspe.com</p> |                             |                      |



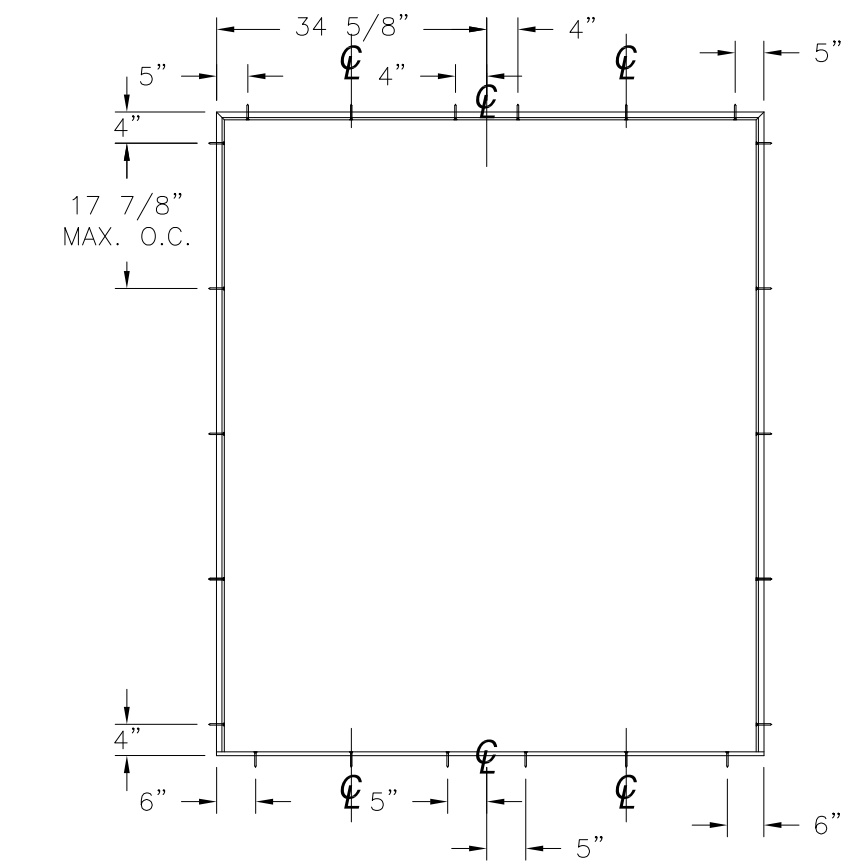
Luis R. Lomas P.E.  
TX No.: 101889



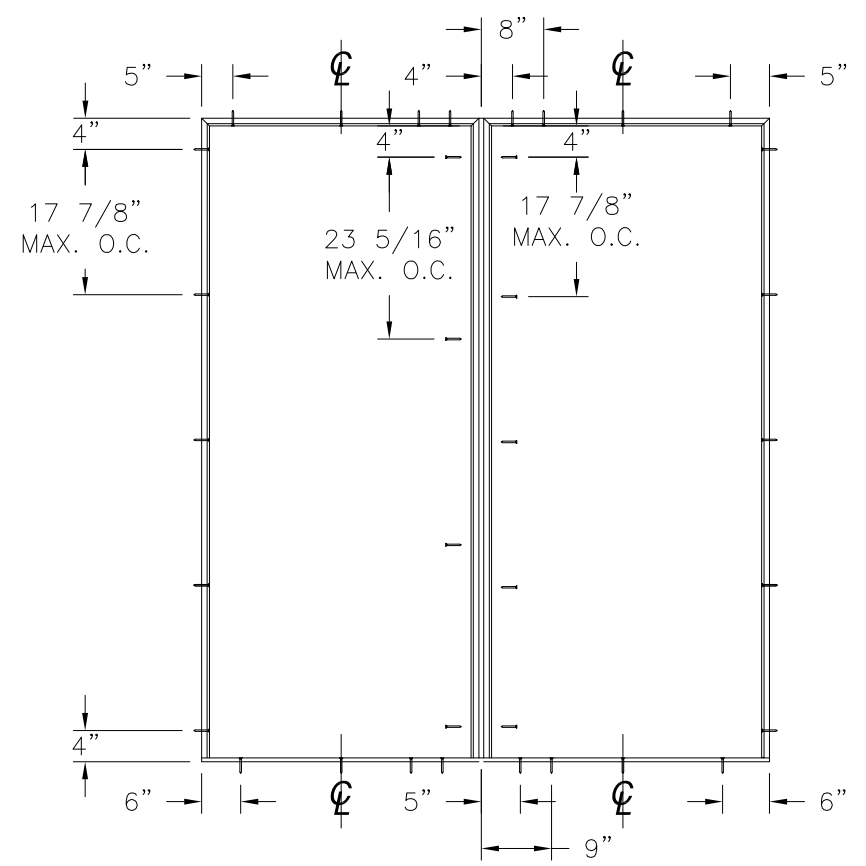
**ANCHORING LAYOUT FOR OXO, XXO AND OXX**



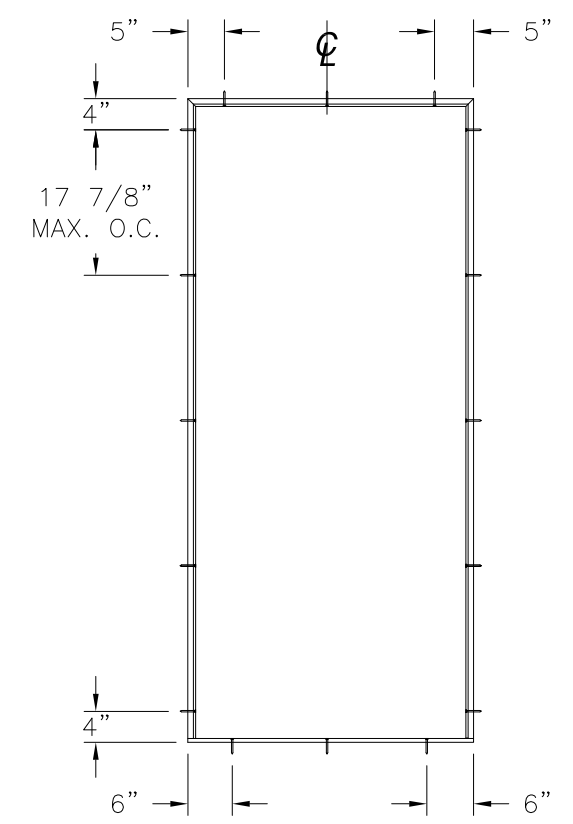
**ANCHORING LAYOUT FOR OX/O, O/XO, XX/O AND O/XX**



**ANCHORING LAYOUT FOR XX, OX AND XO**



**ANCHORING LAYOUT FOR O/X AND X/O**



**ANCHORING LAYOUT FOR X**

| REVISIONS |                              |            |          |
|-----------|------------------------------|------------|----------|
| REV       | DESCRIPTION                  | DATE       | APPROVED |
| A         | UPDATED COMPONENTS & DETAILS | 08/13/18   | R.L.     |
| B         | REVISED PER NEW CODE         | 02/10/2021 | R.L.     |

SIGNED: 02/10/2021

NAN YA PLASTICS CORP. USA  
 8989 NORTH LOOP EAST  
 HOUSTON, TX 77029

SERIES SLPS 3/4 LITE FIBERGLASS  
 OUT-SWING PATIO DOOR – IMPACT  
 ANCHORING LAYOUT

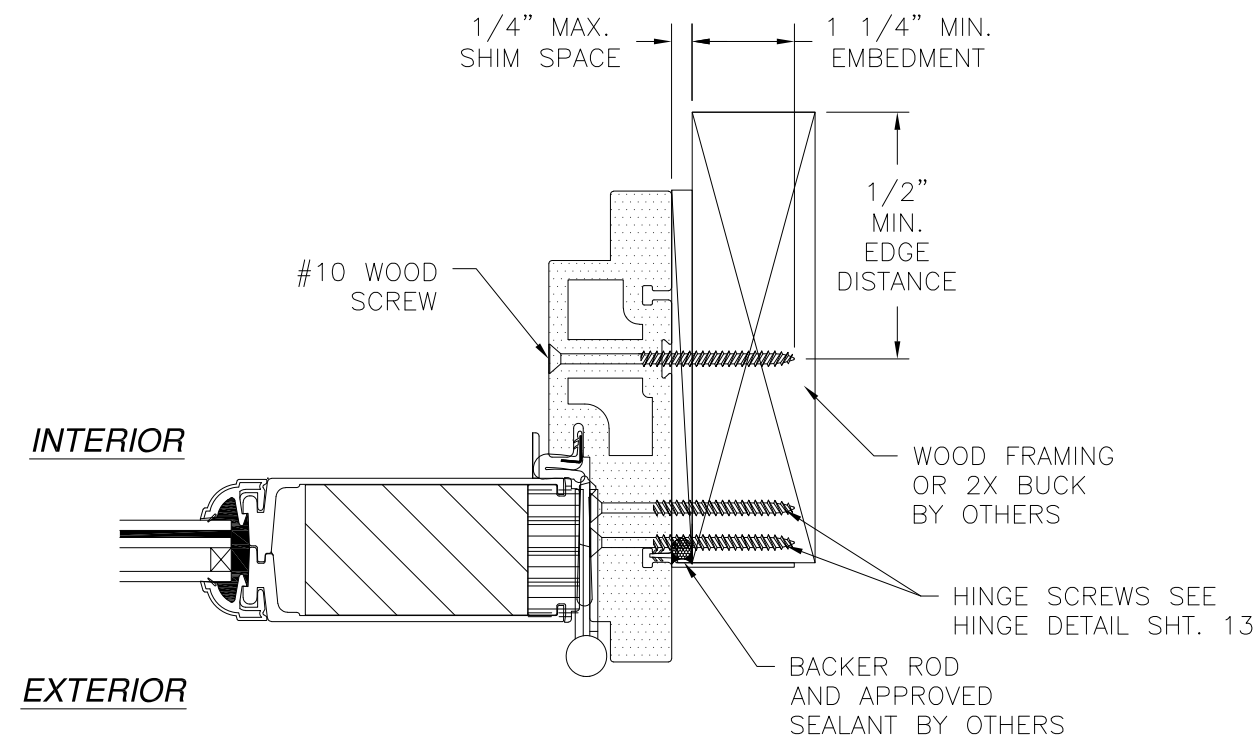
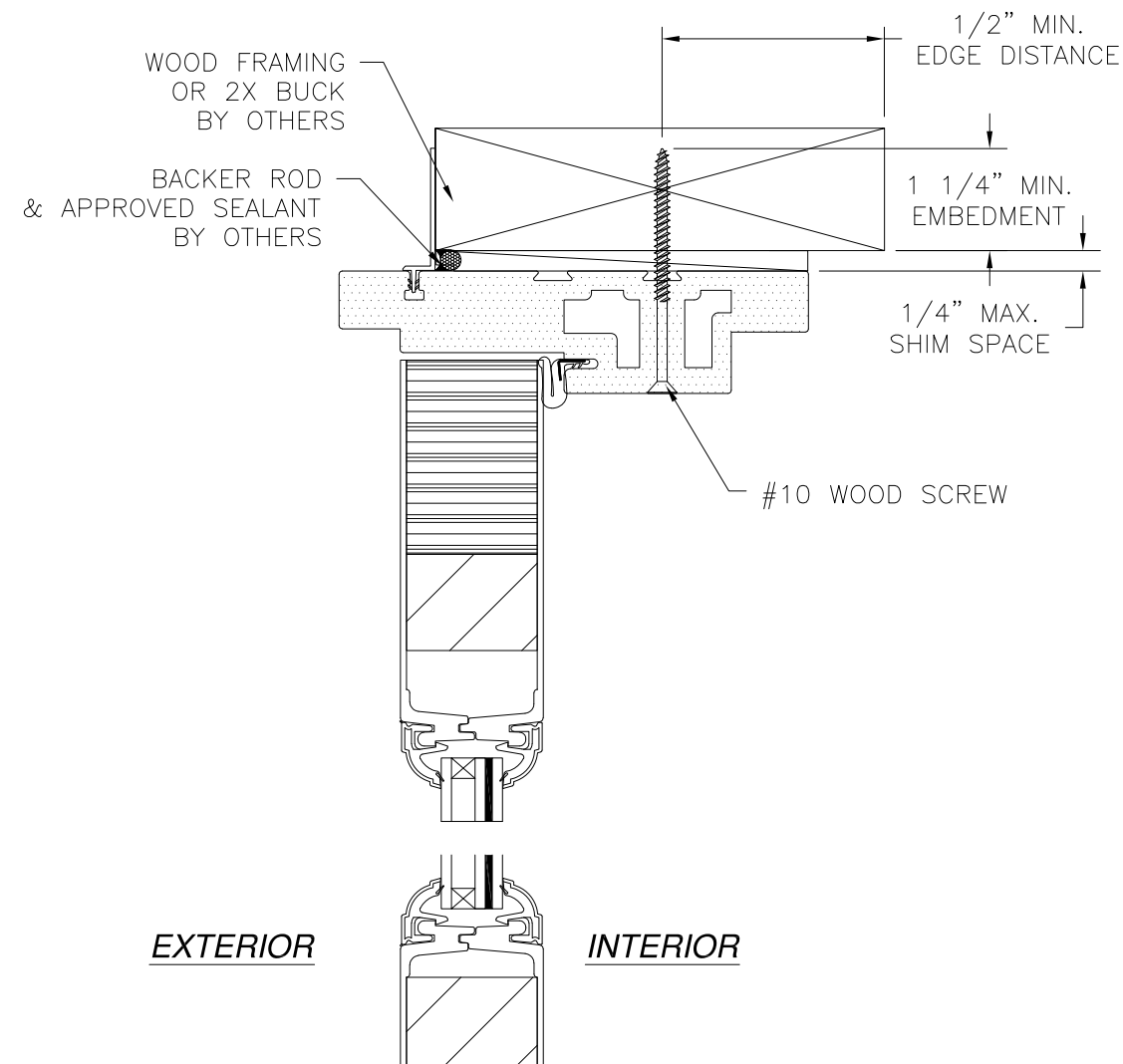
|                |                     |               |
|----------------|---------------------|---------------|
| DRAWN:<br>V.L. | DWG NO.<br>08-02312 | REV<br>B      |
| SCALE NTS      | DATE 10/16/14       | SHEET 5 OF 15 |

L. ROBERTO LOMAS P.E.  
 1432 WOODFORD RD LEWISVILLE, NC 27023  
 434-688-0609 rllomas@rlomaspe.com

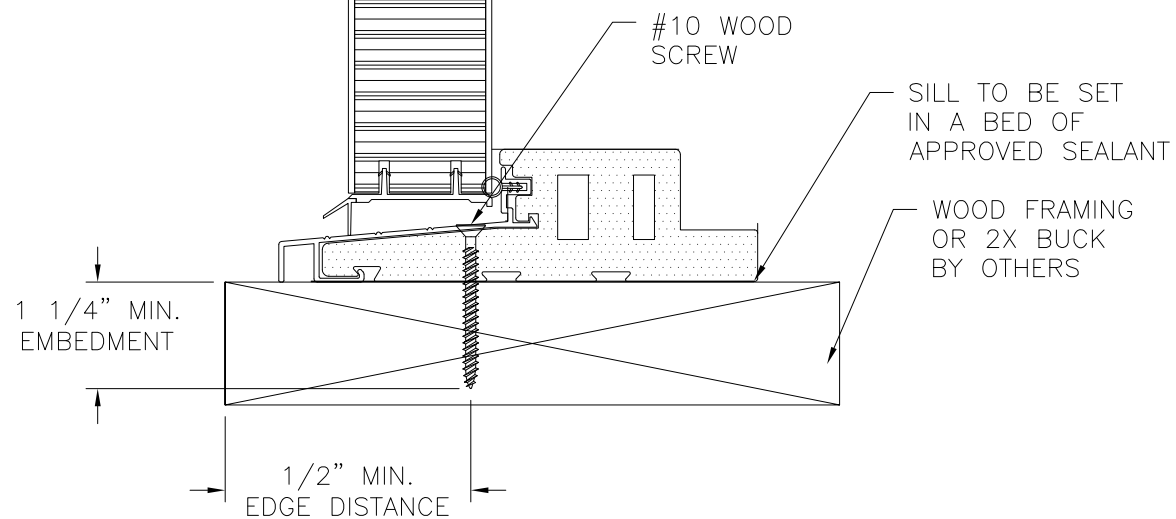


Luis R. Lomas P.E.  
 TX No.: 101889

| REVISIONS |                              |            |          |
|-----------|------------------------------|------------|----------|
| REV       | DESCRIPTION                  | DATE       | APPROVED |
| A         | UPDATED COMPONENTS & DETAILS | 08/13/18   | R.L.     |
| B         | REVISED PER NEW CODE         | 02/10/2021 | R.L.     |



**DOOR INSTALLATION DETAILS**  
2X BUCK/WOOD FRAMING INSTALLATION



**DOOR INSTALLATION DETAILS**  
2X BUCK/WOOD FRAMING INSTALLATION

- NOTES:**
1. INTERIOR AND EXTERIOR FINISHES, BY OTHERS, NOT SHOWN FOR CLARITY.
  2. PERIMETER AND JOINT SEALANT BY OTHERS TO BE DESIGNED IN ACCORDANCE WITH ASTM E2112

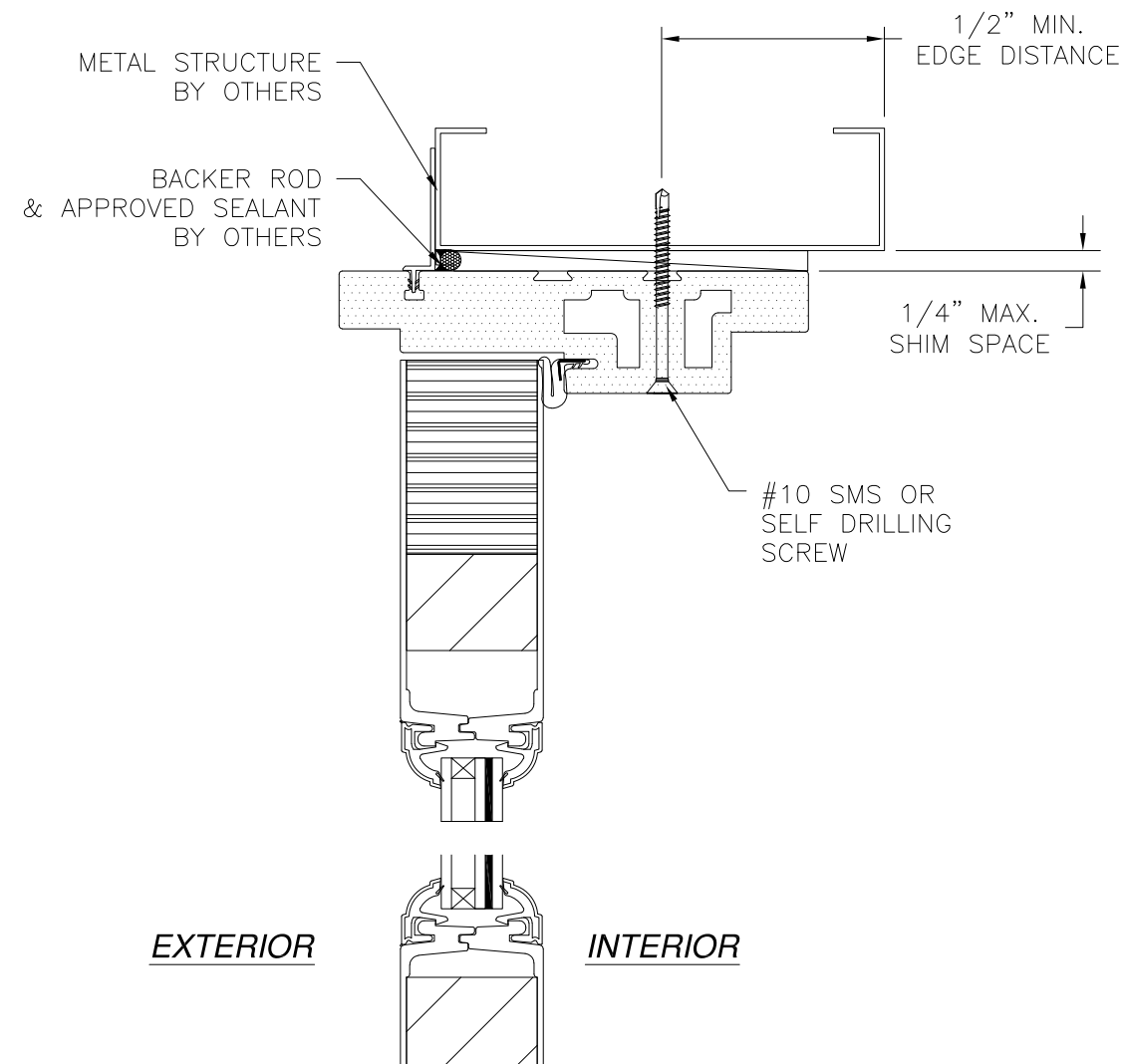
SIGNED: 02/10/2021

|   |                     |               |
|---|---------------------|---------------|
| NAN YA PLASTICS CORP. USA<br>8989 NORTH LOOP EAST<br>HOUSTON, TX 77029                              |                     |               |
| SERIES SLPS 3/4 LITE FIBERGLASS<br>OUT-SWING PATIO DOOR – IMPACT<br>DOOR INSTALLATION DETAILS       |                     |               |
| DRAWN:<br>V.L.  | DWG NO.<br>08-02312 | REV<br>B      |
| SCALE NTS   | DATE 10/16/14       | SHEET 6 OF 15 |
| L. ROBERTO LOMAS P.E.<br>1432 WOODFORD RD LEWISVILLE, NC 27023<br>434-688-0609 rllomas@rlomaspe.com |                     |               |



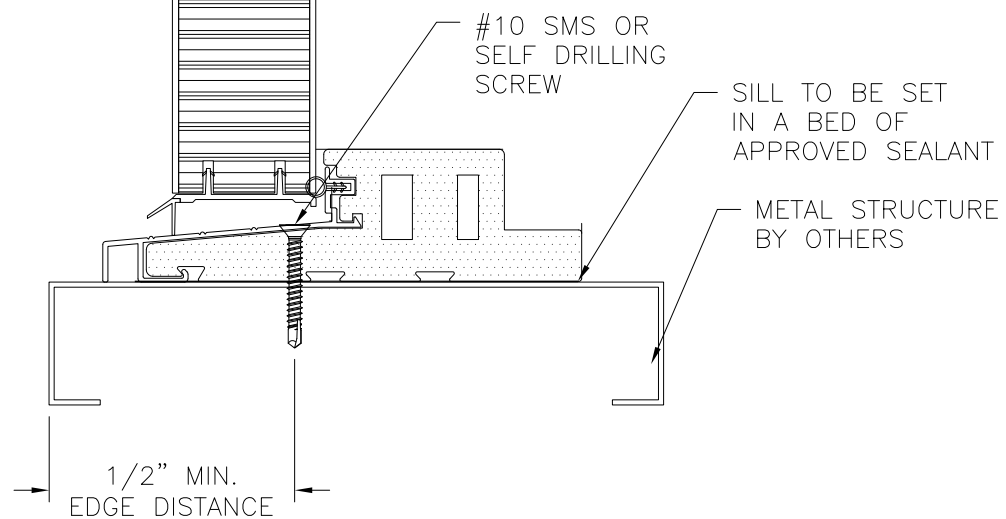
Luis R. Lomas P.E.  
TX No.: 101889

| REVISIONS |                              |            |          |
|-----------|------------------------------|------------|----------|
| REV       | DESCRIPTION                  | DATE       | APPROVED |
| A         | UPDATED COMPONENTS & DETAILS | 08/13/18   | R.L.     |
| B         | REVISED PER NEW CODE         | 02/10/2021 | R.L.     |

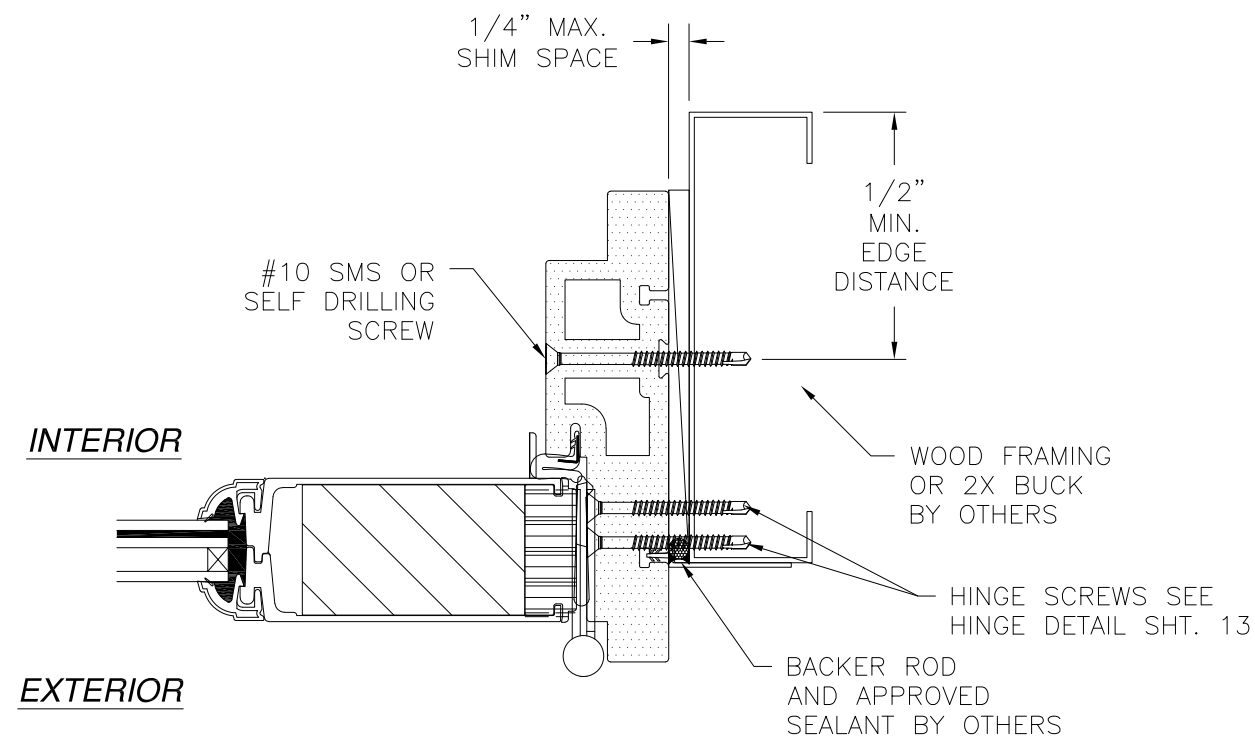


EXTERIOR

INTERIOR



**DOOR INSTALLATION DETAILS**  
METAL STRUCTURE INSTALLATION



INTERIOR

EXTERIOR

**DOOR INSTALLATION DETAILS**  
METAL STRUCTURE INSTALLATION

**NOTES:**

1. INTERIOR AND EXTERIOR FINISHES, BY OTHERS, NOT SHOWN FOR CLARITY.
2. PERIMETER AND JOINT SEALANT BY OTHERS TO BE DESIGNED IN ACCORDANCE WITH ASTM E2112

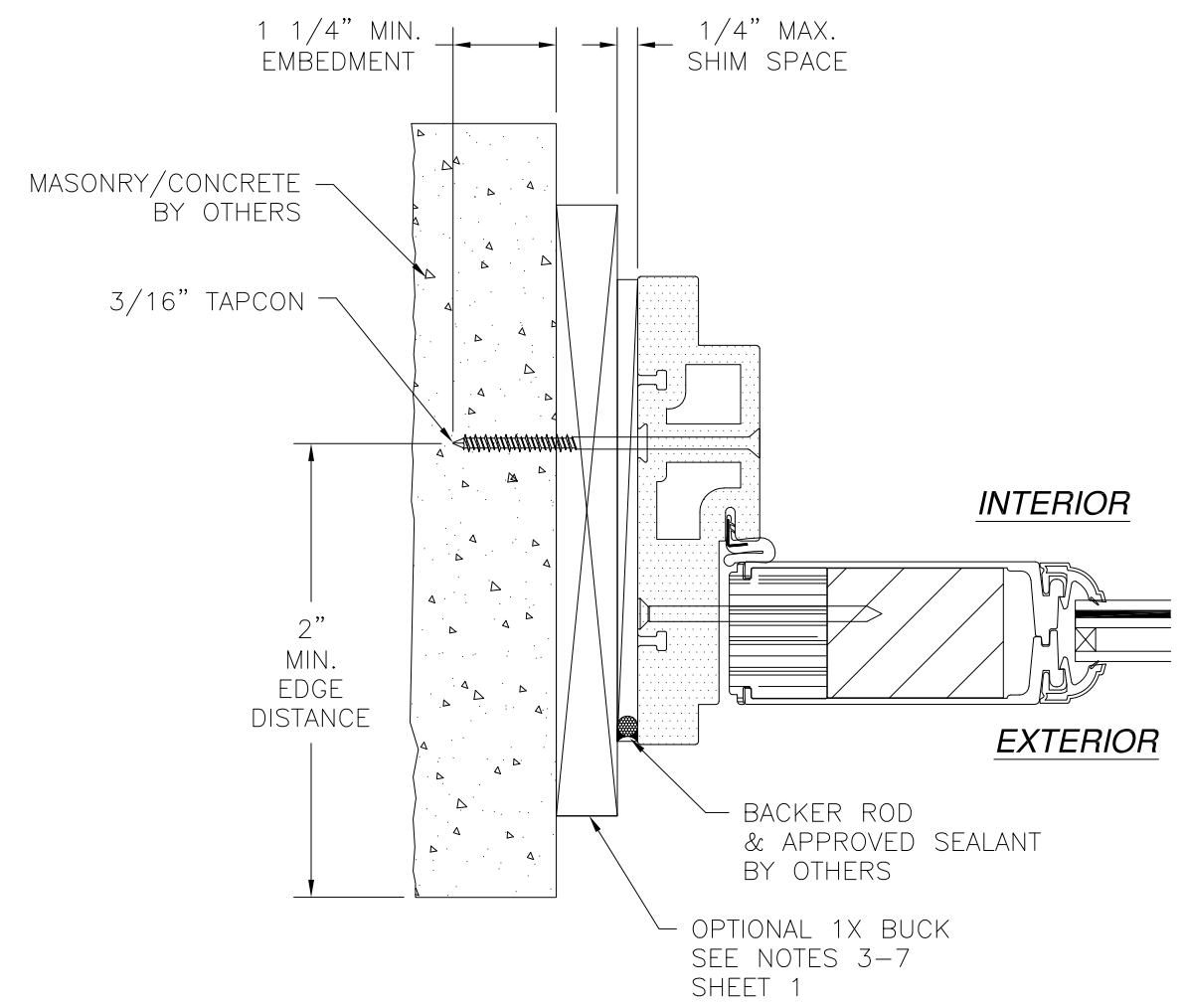
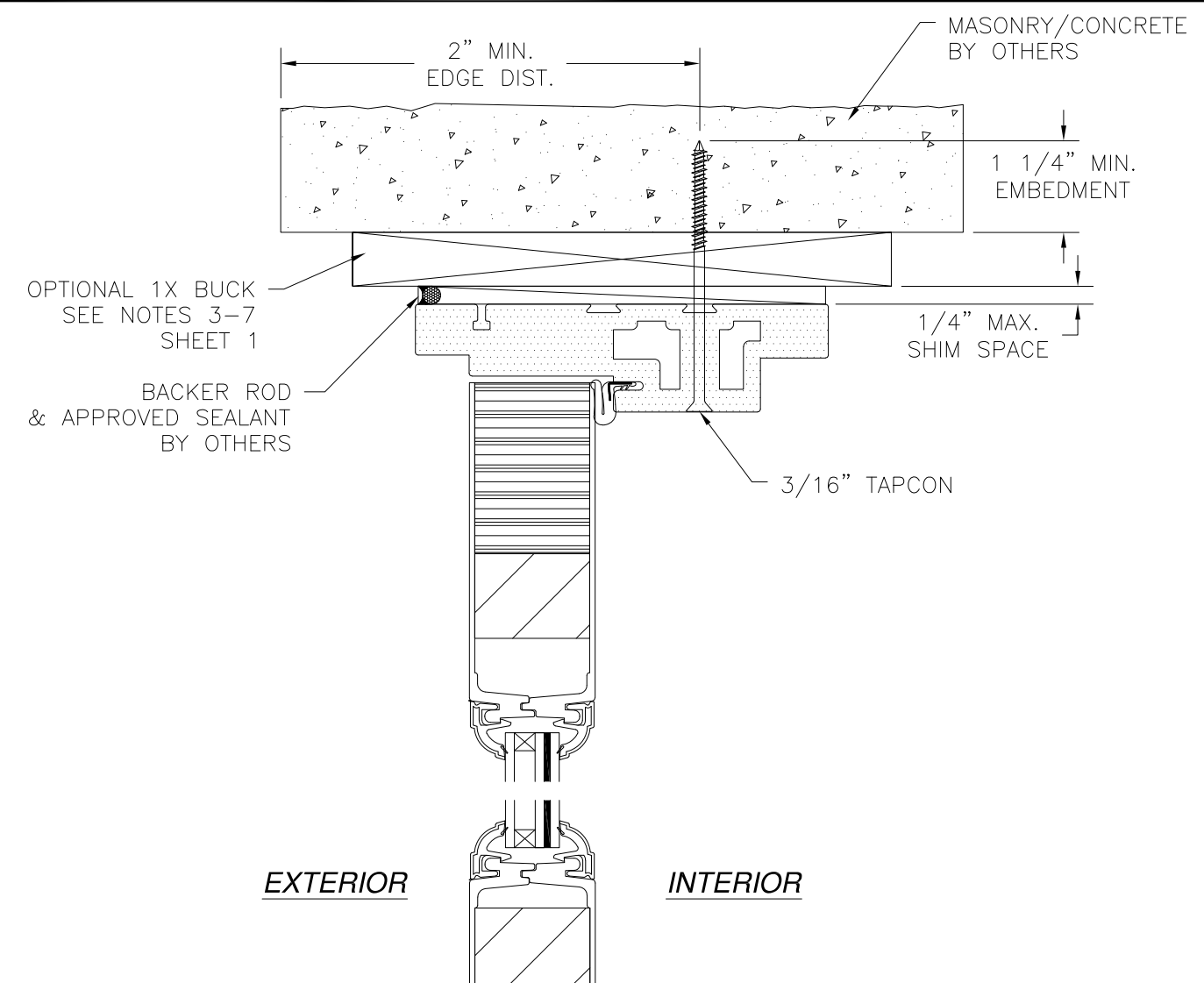
SIGNED: 02/10/2021

|  |                             |                      |
|--|-----------------------------|----------------------|
| <p>NAN YA PLASTICS CORP. USA<br/>8989 NORTH LOOP EAST<br/>HOUSTON, TX 77029</p>                              |                             |                      |
| <p>SERIES SLPS 3/4 LITE FIBERGLASS<br/>OUT-SWING PATIO DOOR – IMPACT<br/>DOOR INSTALLATION DETAILS</p>       |                             |                      |
| <p>DRAWN:<br/>V.L.</p>   | <p>DWG NO.<br/>08-02312</p> | <p>REV<br/>B</p>     |
| <p>SCALE NTS</p>   | <p>DATE 10/16/14</p>        | <p>SHEET 7 OF 15</p> |
| <p>L. ROBERTO LOMAS P.E.<br/>1432 WOODFORD RD LEWISVILLE, NC 27023<br/>434-688-0609 rllomas@rlomaspe.com</p> |                             |                      |

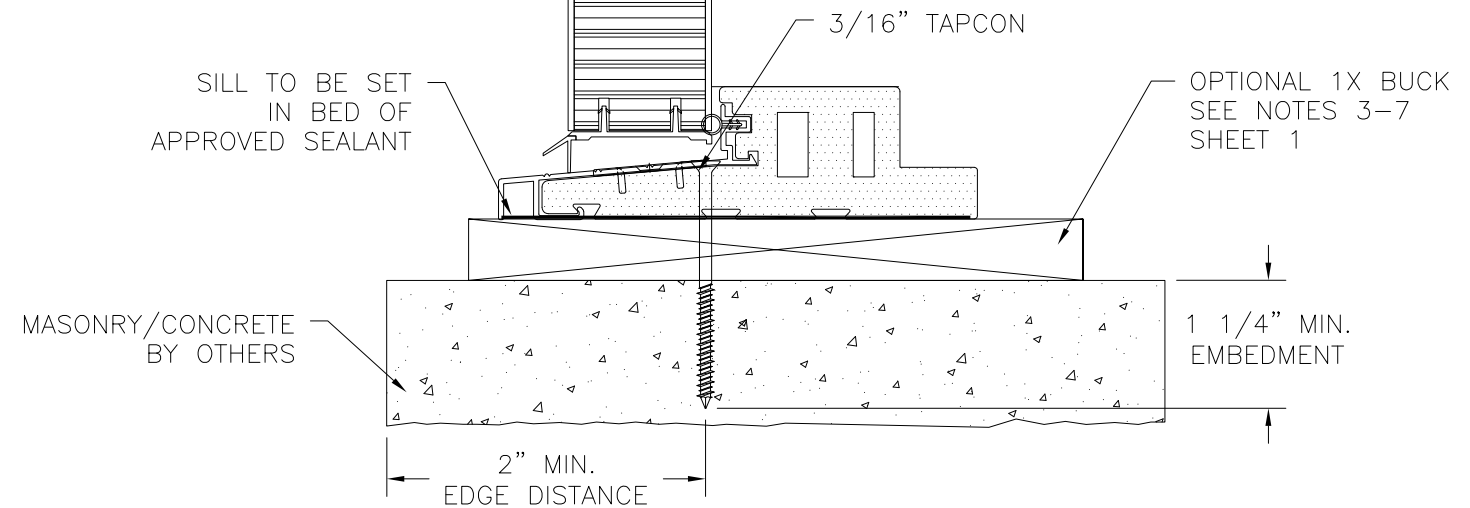


Luis R. Lomas P.E.  
TX No.: 101889

| REVISIONS |                              |            |          |
|-----------|------------------------------|------------|----------|
| REV       | DESCRIPTION                  | DATE       | APPROVED |
| A         | UPDATED COMPONENTS & DETAILS | 08/13/18   | R.L.     |
| B         | REVISED PER NEW CODE         | 02/10/2021 | R.L.     |



**DOOR INSTALLATION DETAILS**  
MASONRY/CONCRETE INSTALLATION



**DOOR INSTALLATION DETAILS**  
MASONRY/CONCRETE INSTALLATION

- NOTES:**
- INTERIOR AND EXTERIOR FINISHES, BY OTHERS, NOT SHOWN FOR CLARITY.
  - PERIMETER AND JOINT SEALANT BY OTHERS TO BE DESIGNED IN ACCORDANCE WITH ASTM E2112

SIGNED: 02/10/2021

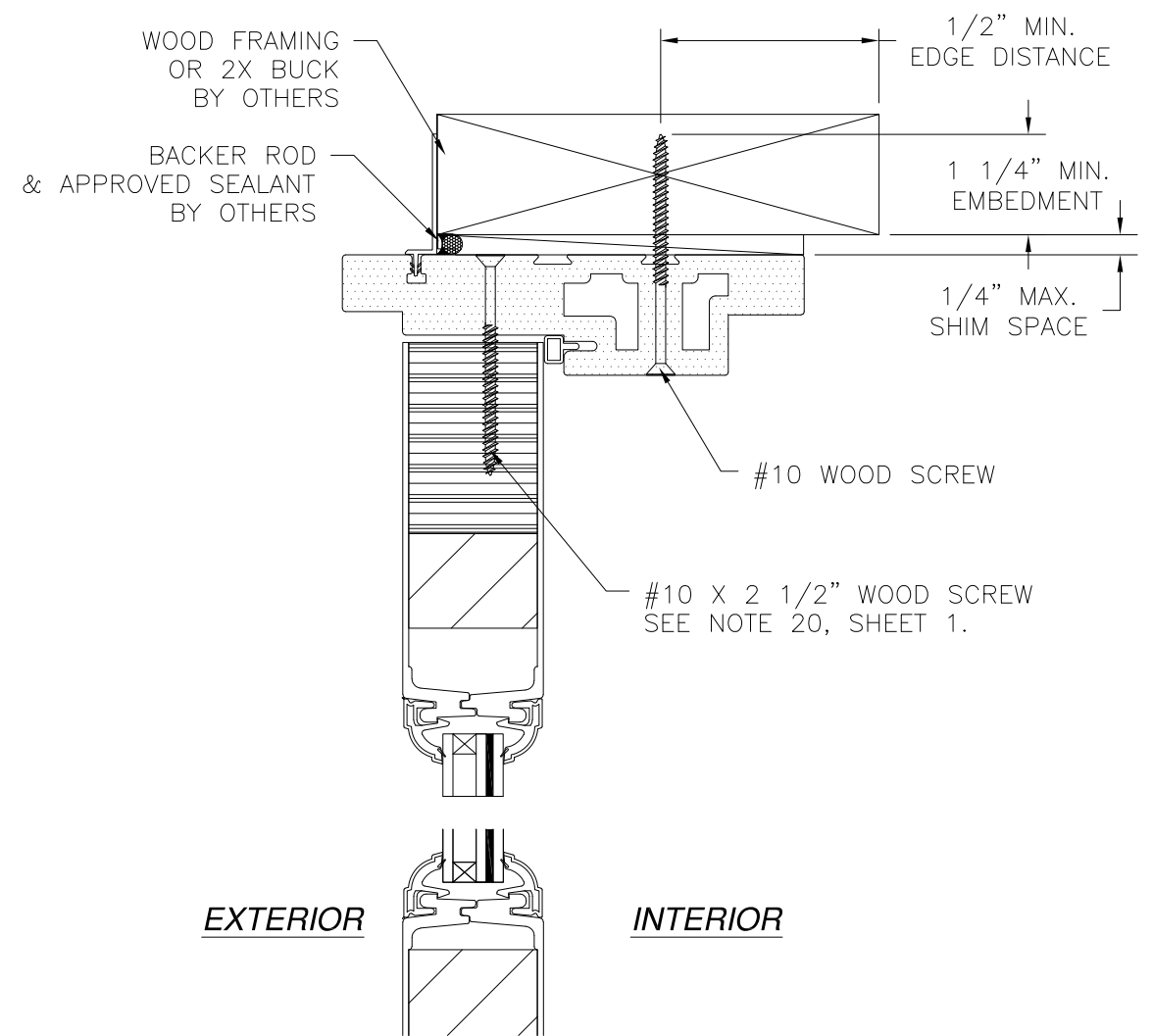
|  |                             |                      |
|--|-----------------------------|----------------------|
| <p>NAN YA PLASTICS CORP. USA<br/>8989 NORTH LOOP EAST<br/>HOUSTON, TX 77029</p>                              |                             |                      |
| <p>SERIES SLPS 3/4 LITE FIBERGLASS<br/>OUT-SWING PATIO DOOR – IMPACT<br/>DOOR INSTALLATION DETAILS</p>       |                             |                      |
| <p>DRAWN:<br/>V.L.</p>   | <p>DWG NO.<br/>08-02312</p> | <p>REV<br/>B</p>     |
| <p>SCALE NTS</p>   | <p>DATE 10/16/14</p>        | <p>SHEET 8 OF 15</p> |
| <p>L. ROBERTO LOMAS P.E.<br/>1432 WOODFORD RD LEWISVILLE, NC 27023<br/>434-688-0609 rllomas@rlomaspe.com</p> |                             |                      |



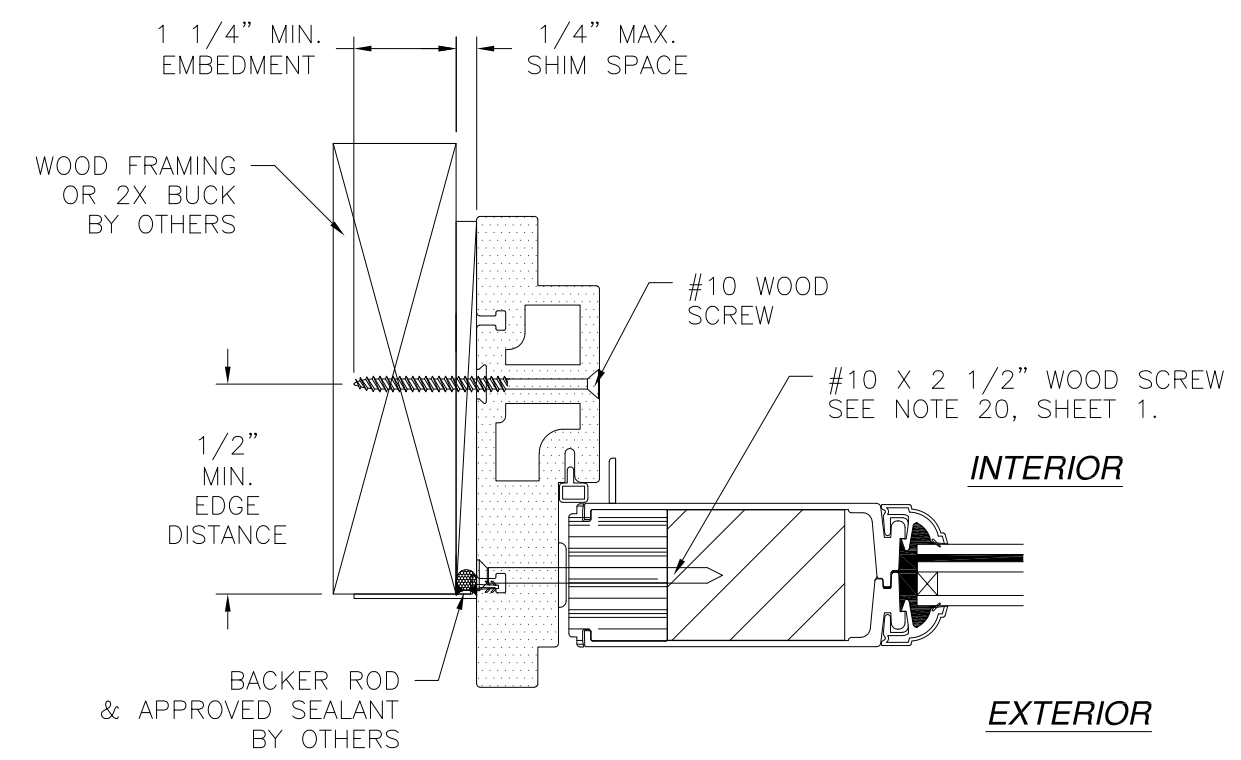
Luis R. Lomas P.E.  
TX No.: 101889



| REVISIONS |                              |            |          |
|-----------|------------------------------|------------|----------|
| REV       | DESCRIPTION                  | DATE       | APPROVED |
| A         | UPDATED COMPONENTS & DETAILS | 08/13/18   | R.L.     |
| B         | REVISED PER NEW CODE         | 02/10/2021 | R.L.     |



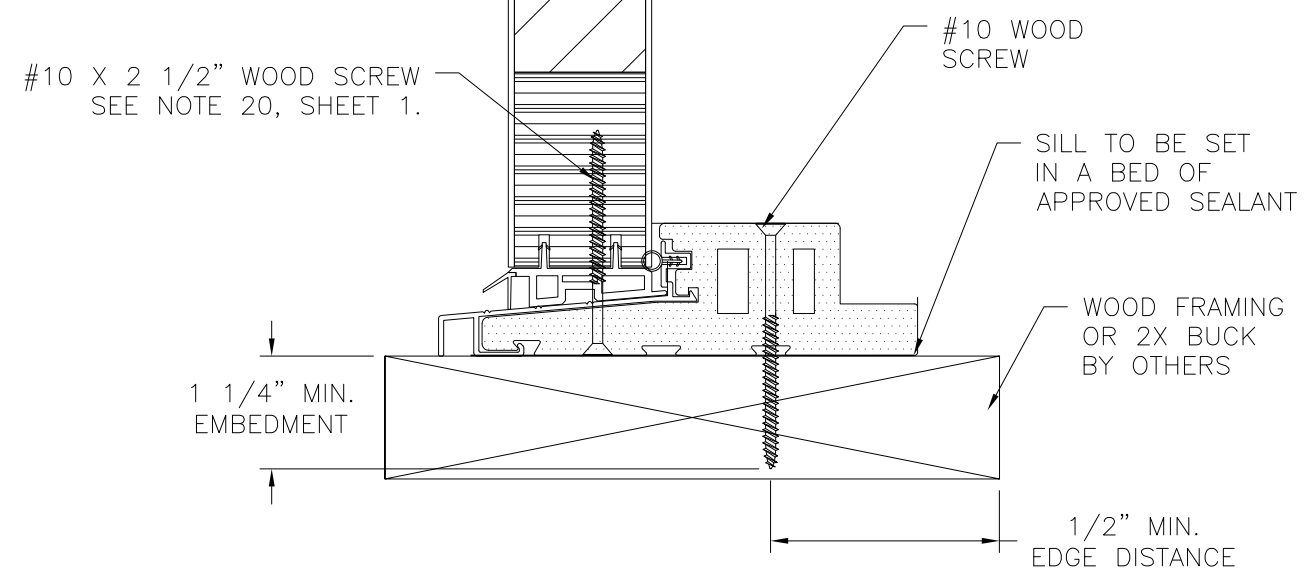
**EXTERIOR**                      **INTERIOR**



**SIDELITE INSTALLATION DETAILS**  
2X BUCK/WOOD FRAMING INSTALLATION

**INTERIOR**

**EXTERIOR**



**SIDELITE INSTALLATION DETAILS**  
2X BUCK/WOOD FRAMING INSTALLATION

- NOTES:**
1. INTERIOR AND EXTERIOR FINISHES, BY OTHERS, NOT SHOWN FOR CLARITY.
  2. PERIMETER AND JOINT SEALANT BY OTHERS TO BE DESIGNED IN ACCORDANCE WITH ASTM E2112

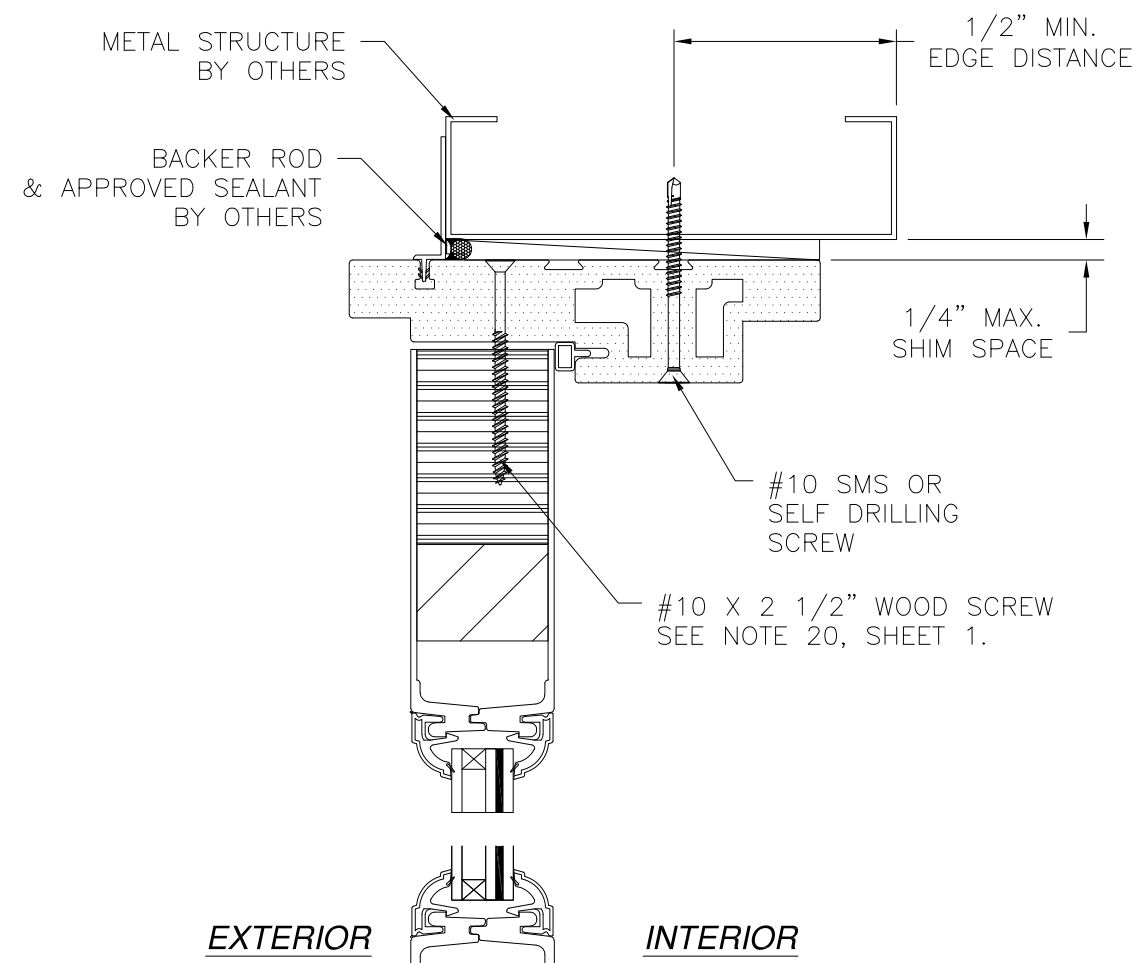
SIGNED: 02/10/2021

|  |                             |                      |
|--|-----------------------------|----------------------|
| <p>NAN YA PLASTICS CORP. USA<br/>8989 NORTH LOOP EAST<br/>HOUSTON, TX 77029</p>                              |                             |                      |
| <p>SERIES SLPS 3/4 LITE FIBERGLASS<br/>OUT-SWING PATIO DOOR – IMPACT<br/>SIDELITE INSTALLATION DETAILS</p>   |                             |                      |
| <p>DRAWN:<br/>V.L.</p>   | <p>DWG NO.<br/>08-02312</p> | <p>REV<br/>B</p>     |
| <p>SCALE NTS</p>   | <p>DATE 10/16/14</p>        | <p>SHEET 9 OF 15</p> |
| <p>L. ROBERTO LOMAS P.E.<br/>1432 WOODFORD RD LEWISVILLE, NC 27023<br/>434-688-0609 rllomas@rlomaspe.com</p> |                             |                      |

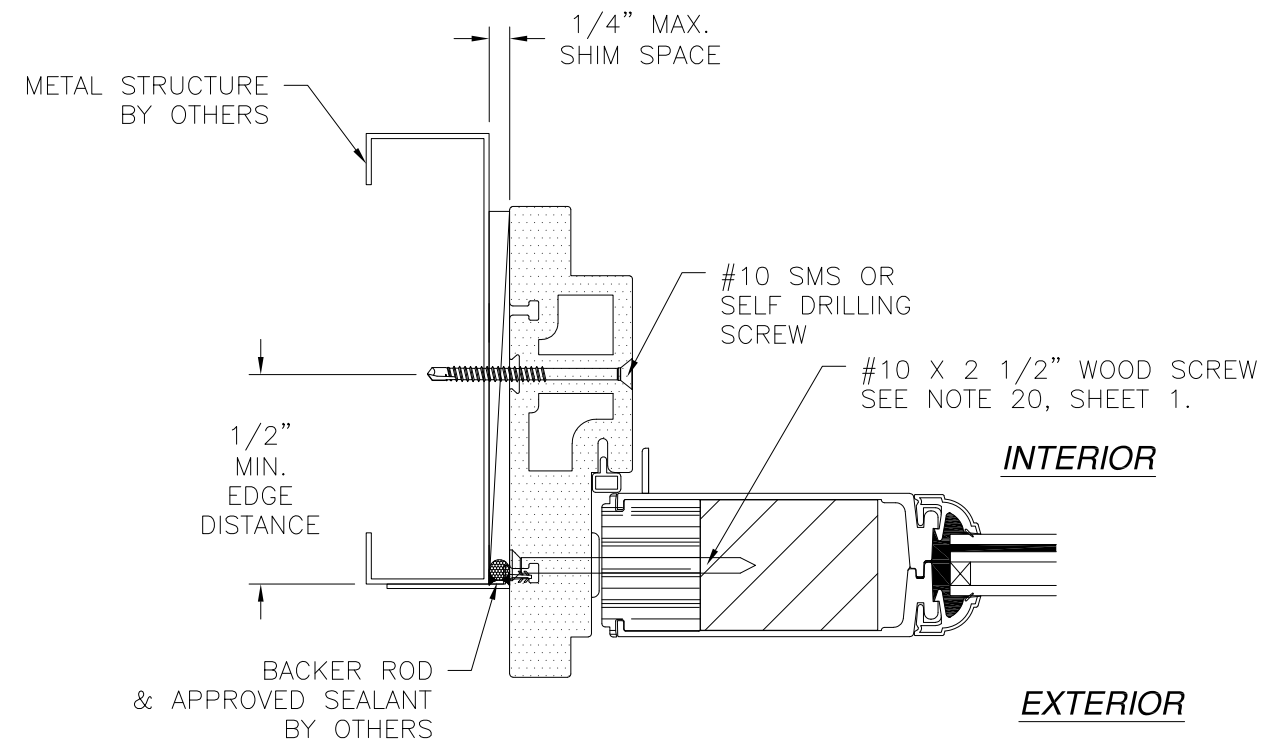


Luis R. Lomas P.E.  
TX No.: 101889

| REVISIONS |                              |            |          |
|-----------|------------------------------|------------|----------|
| REV       | DESCRIPTION                  | DATE       | APPROVED |
| A         | UPDATED COMPONENTS & DETAILS | 08/13/18   | R.L.     |
| B         | REVISED PER NEW CODE         | 02/10/2021 | R.L.     |



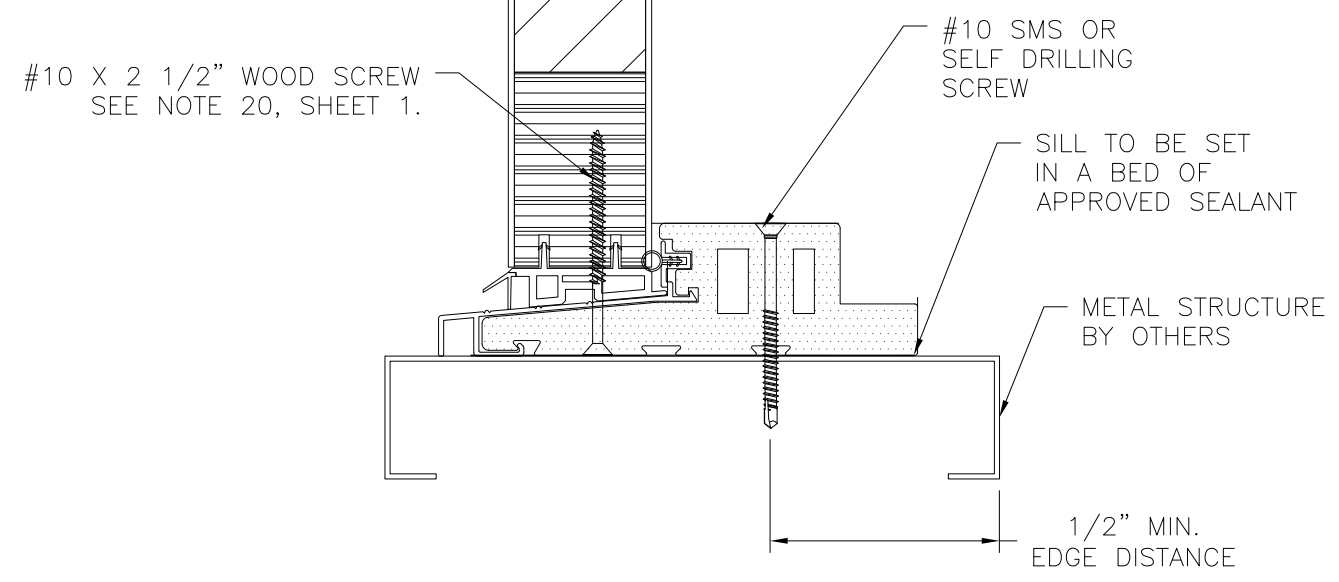
EXTERIOR INTERIOR



**SIDELITE INSTALLATION DETAILS**  
METAL STRUCTURE INSTALLATION

INTERIOR

EXTERIOR



**SIDELITE INSTALLATION DETAILS**  
METAL STRUCTURE INSTALLATION

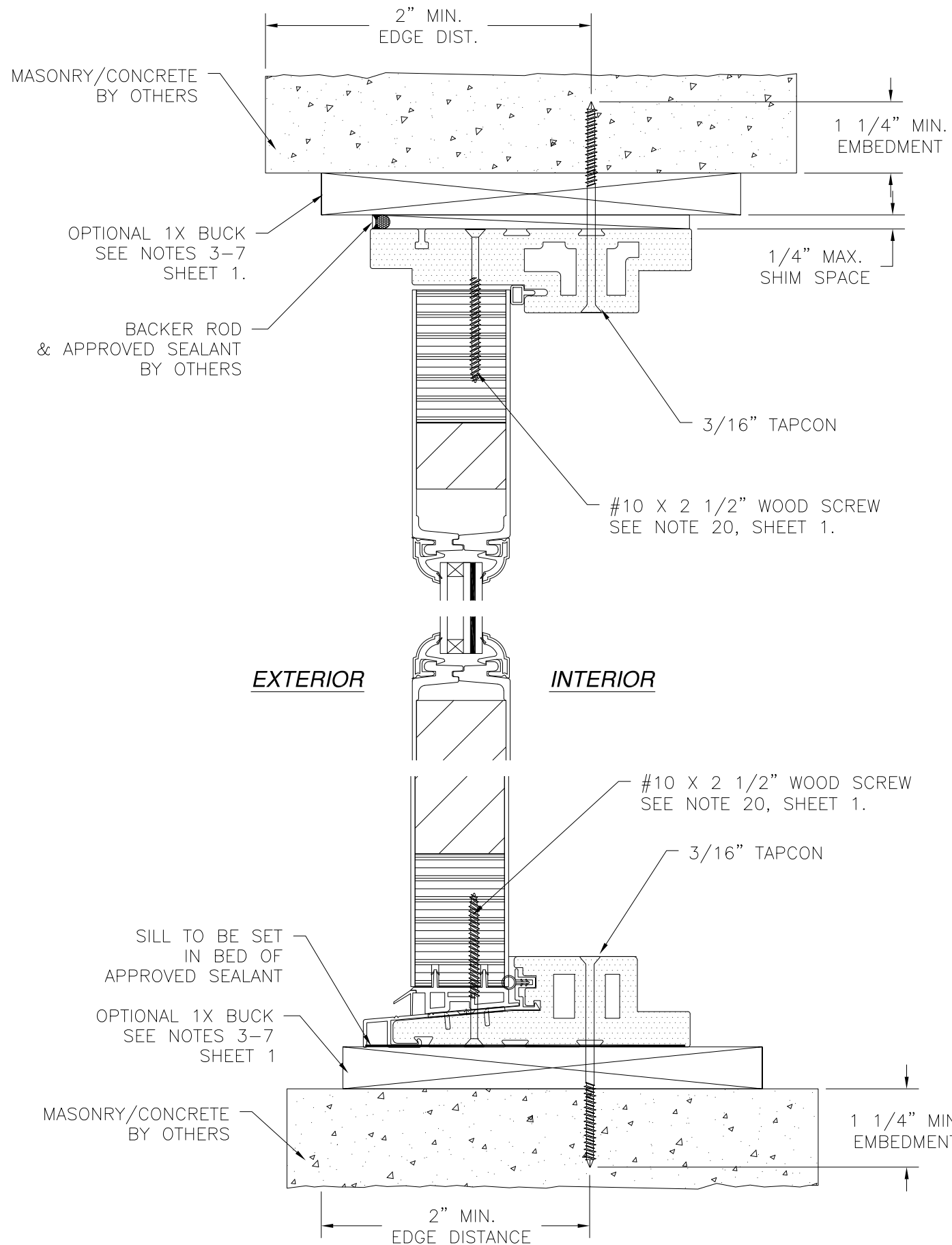
- NOTES:**
1. INTERIOR AND EXTERIOR FINISHES, BY OTHERS, NOT SHOWN FOR CLARITY.
  2. PERIMETER AND JOINT SEALANT BY OTHERS TO BE DESIGNED IN ACCORDANCE WITH ASTM E2112

SIGNED: 02/10/2021

|  |                             |                       |
|--|-----------------------------|-----------------------|
| <p>NAN YA PLASTICS CORP. USA<br/>8989 NORTH LOOP EAST<br/>HOUSTON, TX 77029</p>                              |                             |                       |
| <p>SERIES SLPS 3/4 LITE FIBERGLASS<br/>OUT-SWING PATIO DOOR - IMPACT<br/>SIDELITE INSTALLATION DETAILS</p>   |                             |                       |
| <p>DRAWN:<br/>V.L.</p>   | <p>DWG NO.<br/>08-02312</p> | <p>REV<br/>B</p>      |
| <p>SCALE NTS</p>   | <p>DATE 10/16/14</p>        | <p>SHEET 10 OF 15</p> |
| <p>L. ROBERTO LOMAS P.E.<br/>1432 WOODFORD RD LEWISVILLE, NC 27023<br/>434-688-0609 rllomas@rlomaspe.com</p> |                             |                       |

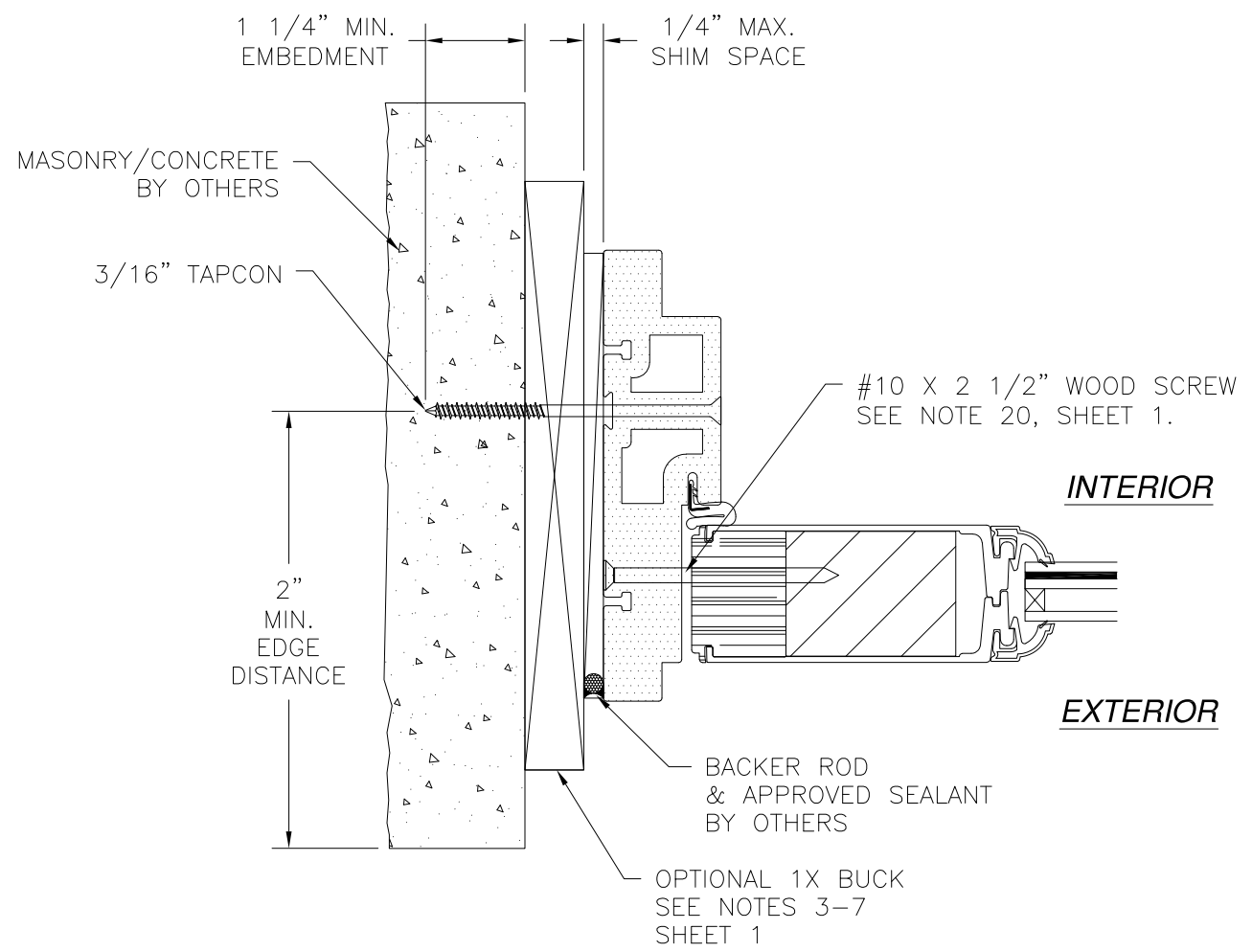


Luis R. Lomas P.E.  
TX No.: 101889



**SIDLITE INSTALLATION DETAILS**  
METAL STRUCTURE INSTALLATION

| REVISIONS |                              |            |          |
|-----------|------------------------------|------------|----------|
| REV       | DESCRIPTION                  | DATE       | APPROVED |
| A         | UPDATED COMPONENTS & DETAILS | 08/13/18   | R.L.     |
| B         | REVISED PER NEW CODE         | 02/10/2021 | R.L.     |



- NOTES:**
- INTERIOR AND EXTERIOR FINISHES, BY OTHERS, NOT SHOWN FOR CLARITY.
  - PERIMETER AND JOINT SEALANT BY OTHERS TO BE DESIGNED IN ACCORDANCE WITH ASTM E2112

SIGNED: 02/10/2021

NAN YA PLASTICS CORP. USA  
8989 NORTH LOOP EAST  
HOUSTON, TX 77029

SERIES SLPS 3/4 LITE FIBERGLASS  
OUT-SWING PATIO DOOR - IMPACT  
SIDLITE INSTALLATION DETAILS

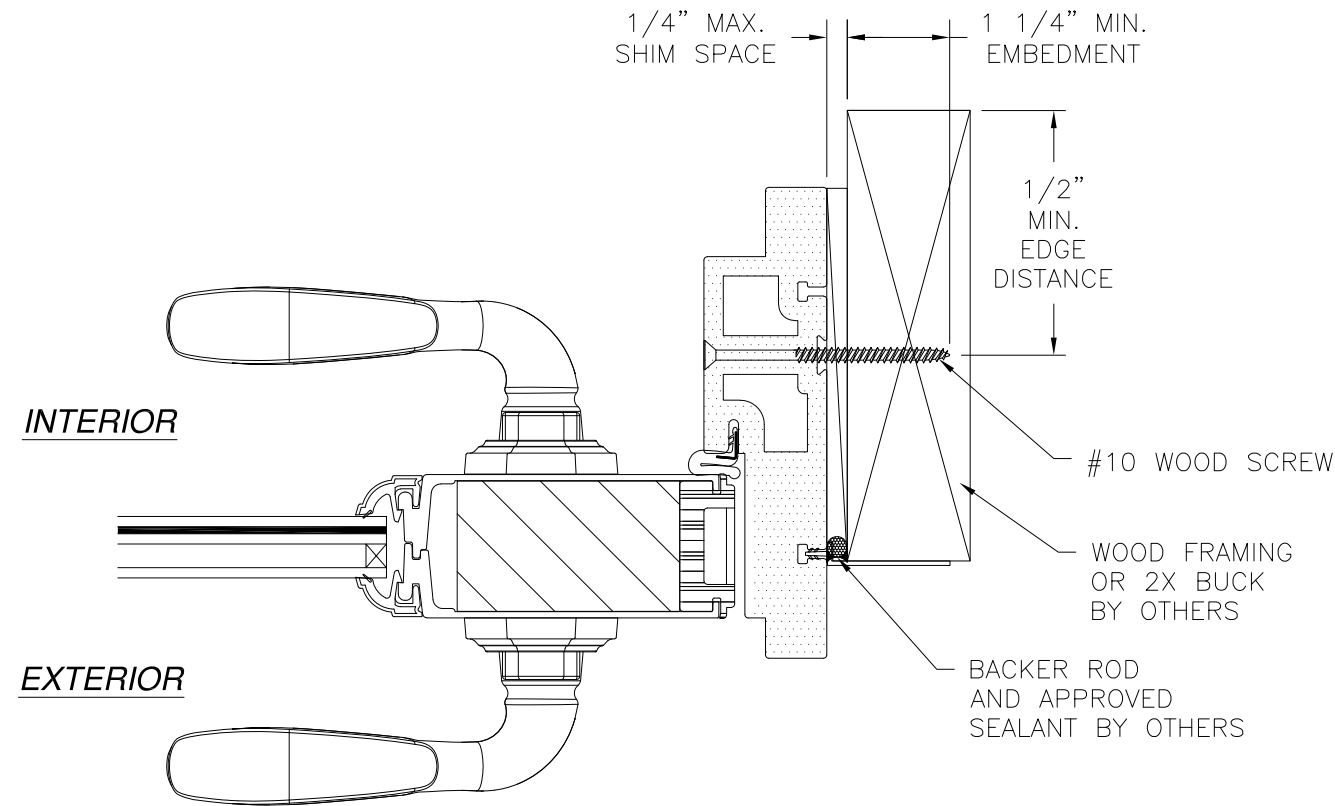
|                |                     |                   |
|----------------|---------------------|-------------------|
| DRAWN:<br>V.L. | DWG NO.<br>08-02312 | REV<br>B          |
| SCALE<br>NTS   | DATE<br>10/16/14    | SHEET<br>11 OF 15 |

L. ROBERTO LOMAS P.E.  
1432 WOODFORD RD LEWISVILLE, NC 27023  
434-688-0609 rllomas@rlomaspe.com



Luis R. Lomas P.E.  
TX No.: 101889

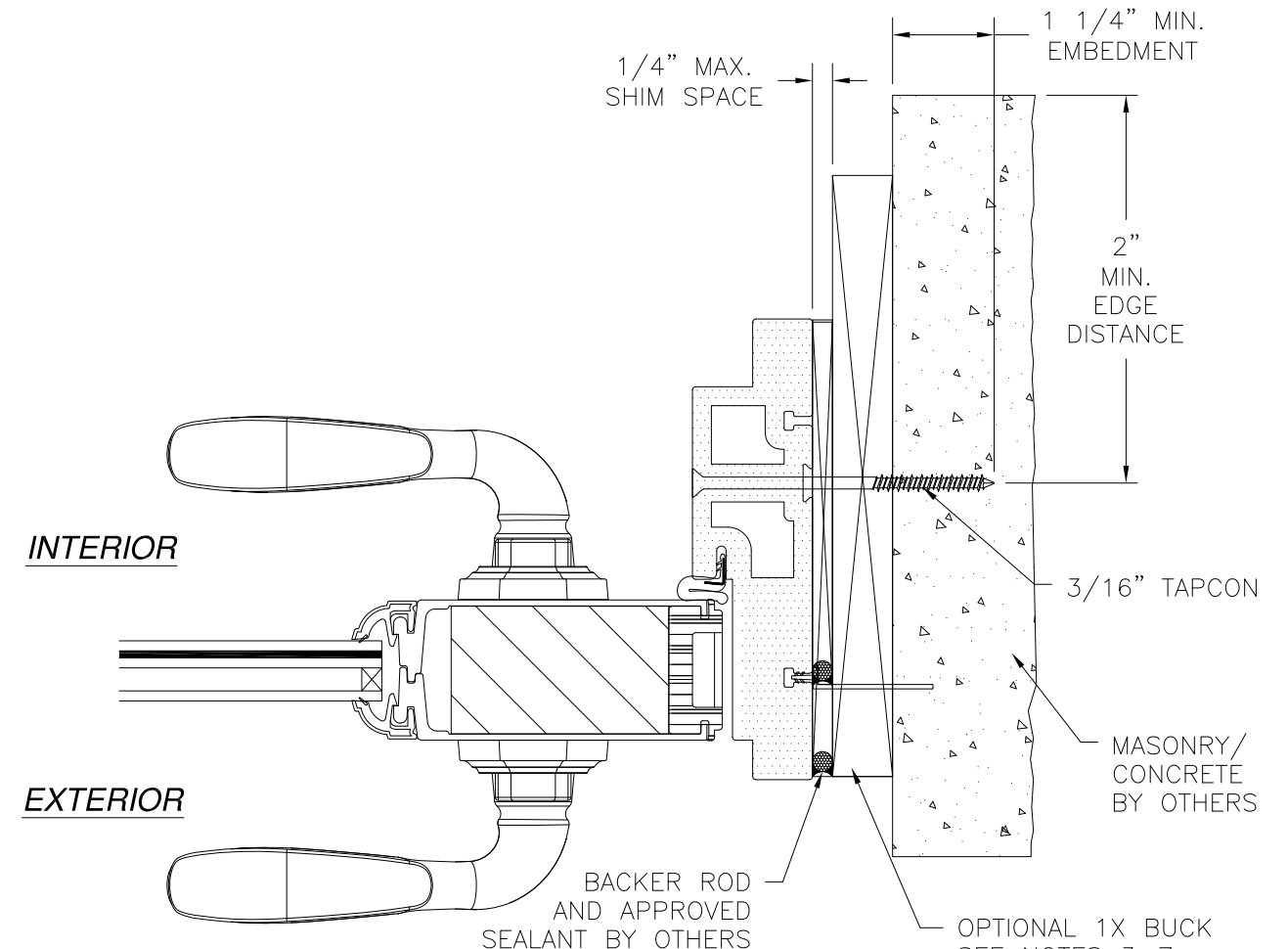
| REVISIONS |                              |            |          |
|-----------|------------------------------|------------|----------|
| REV       | DESCRIPTION                  | DATE       | APPROVED |
| A         | UPDATED COMPONENTS & DETAILS | 08/13/18   | R.L.     |
| B         | REVISED PER NEW CODE         | 02/10/2021 | R.L.     |



**HORIZONTAL CROSS SECTION  
STRIKE JAMB DETAIL  
2X BUCK/WOOD FRAMING INSTALLATION**



**HORIZONTAL CROSS SECTION  
STRIKE JAMB DETAIL  
METAL STRUCTURE INSTALLATION**



**HORIZONTAL CROSS SECTION  
STRIKE JAMB DETAIL  
CONCRETE/MASONRY INSTALLATION**

- NOTES:**
1. INTERIOR AND EXTERIOR FINISHES, BY OTHERS, NOT SHOWN FOR CLARITY.
  2. PERIMETER AND JOINT SEALANT BY OTHERS TO BE DESIGNED IN ACCORDANCE WITH ASTM E2112

SIGNED: 02/10/2021

NAN YA PLASTICS CORP. USA  
8989 NORTH LOOP EAST  
HOUSTON, TX 77029

SERIES SLPS 3/4 LITE FIBERGLASS  
OUT-SWING PATIO DOOR - IMPACT  
INSTALLATION DETAILS

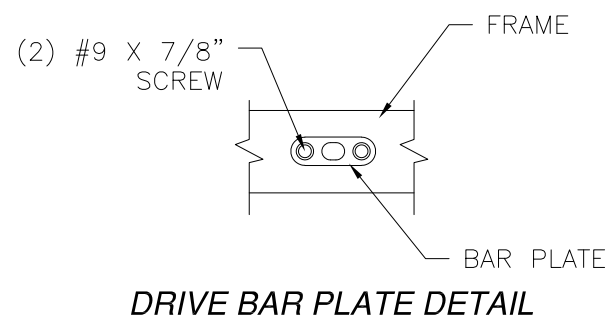
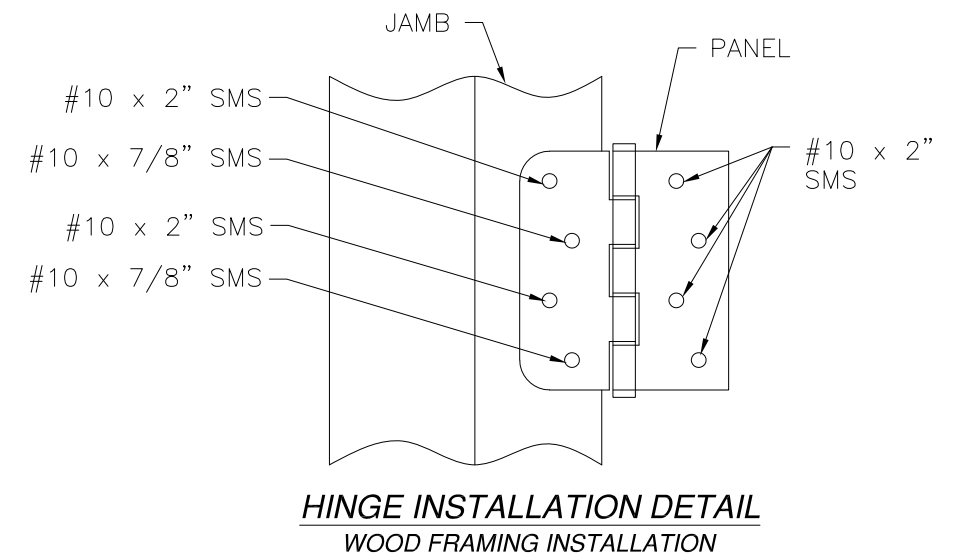
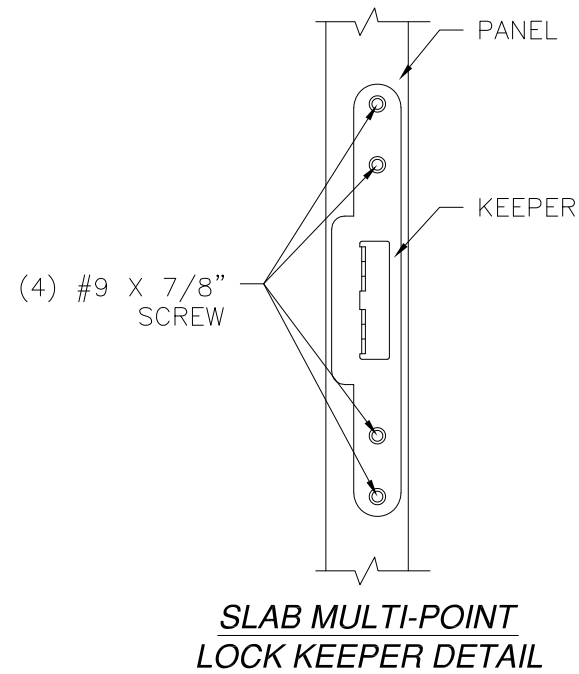
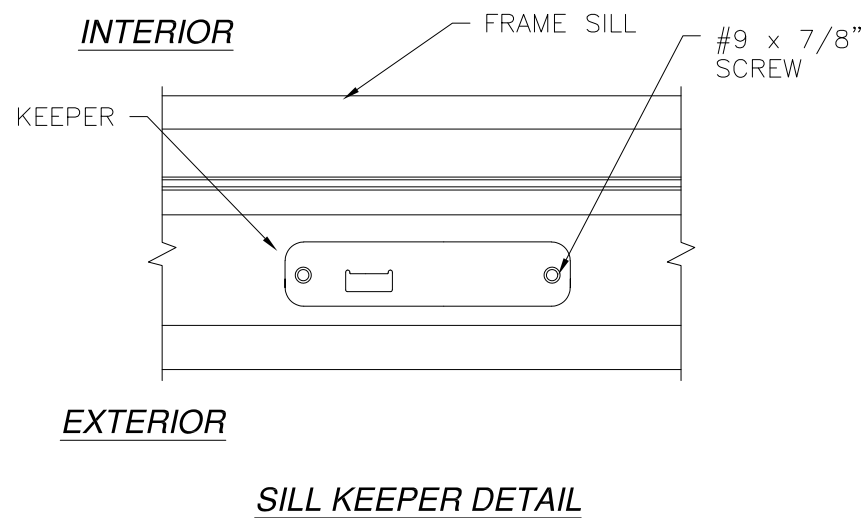
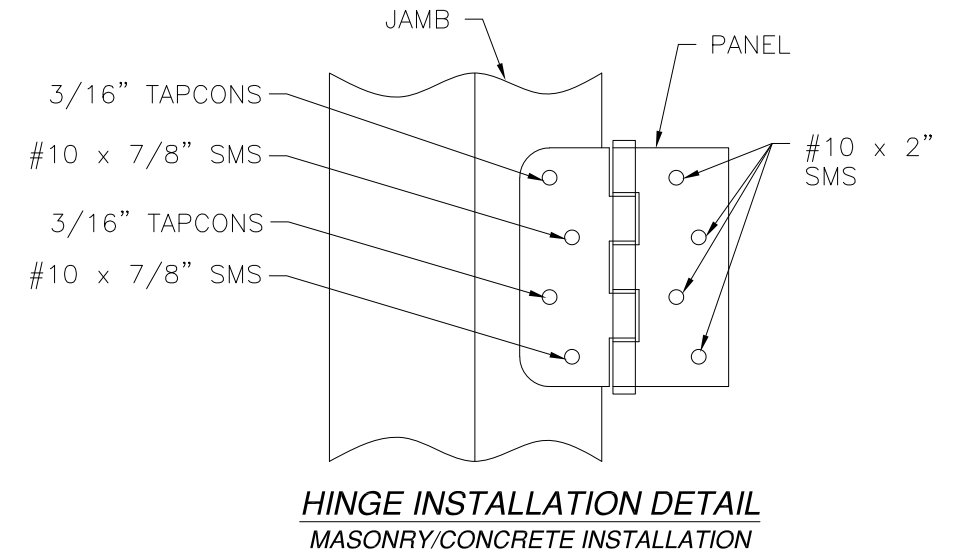
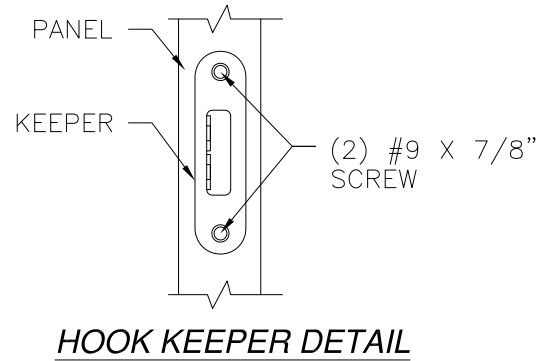
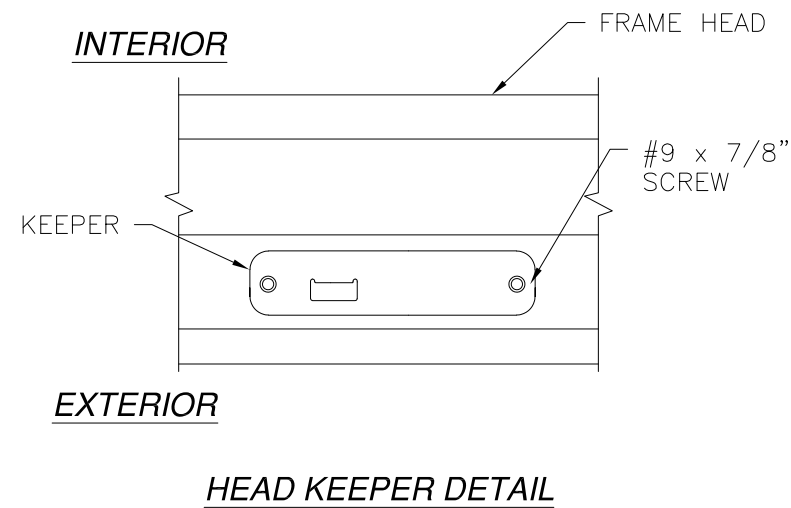
|                |                     |                |
|----------------|---------------------|----------------|
| DRAWN:<br>V.L. | DWG NO.<br>08-02312 | REV<br>B       |
| SCALE NTS      | DATE 10/16/14       | SHEET 12 OF 15 |

L. ROBERTO LOMAS P.E.  
1432 WOODFORD RD LEWISVILLE, NC 27023  
434-688-0609 rllomas@rlomaspe.com



Luis R. Lomas P.E.  
TX No.: 101889

| REVISIONS |                              |            |          |
|-----------|------------------------------|------------|----------|
| REV       | DESCRIPTION                  | DATE       | APPROVED |
| A         | UPDATED COMPONENTS & DETAILS | 08/13/18   | R.L.     |
| B         | REVISED PER NEW CODE         | 02/10/2021 | R.L.     |



SIGNED: 02/10/2021

NAN YA PLASTICS CORP. USA  
8989 NORTH LOOP EAST  
HOUSTON, TX 77029

SERIES SLPS 3/4 LITE FIBERGLASS  
OUT-SWING PATIO DOOR - IMPACT  
INSTALLATION DETAILS

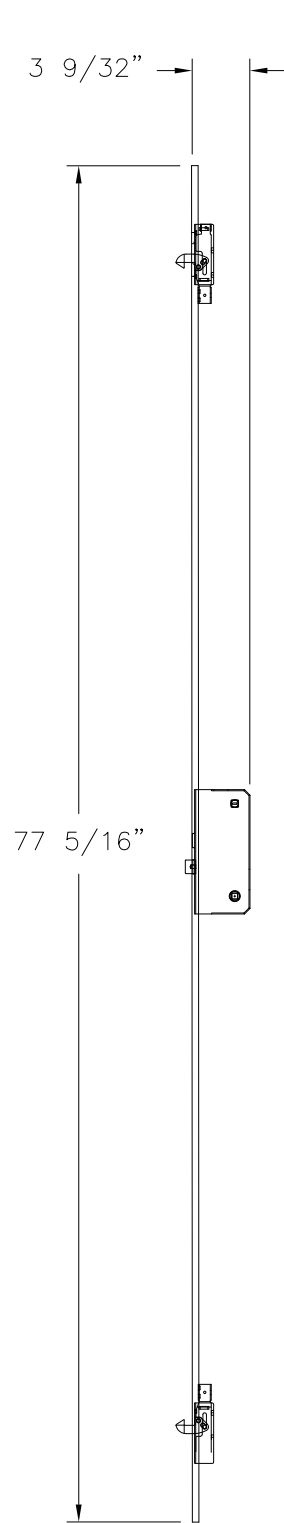
|                |                     |                |
|----------------|---------------------|----------------|
| DRAWN:<br>V.L. | DWG NO.<br>08-02312 | REV<br>B       |
| SCALE NTS      | DATE 10/16/14       | SHEET 13 OF 15 |

L. ROBERTO LOMAS P.E.  
1432 WOODFORD RD LEWISVILLE, NC 27023  
434-688-0609 rllomas@rlomaspe.com



Luis R. Lomas P.E.  
TX No.: 101889

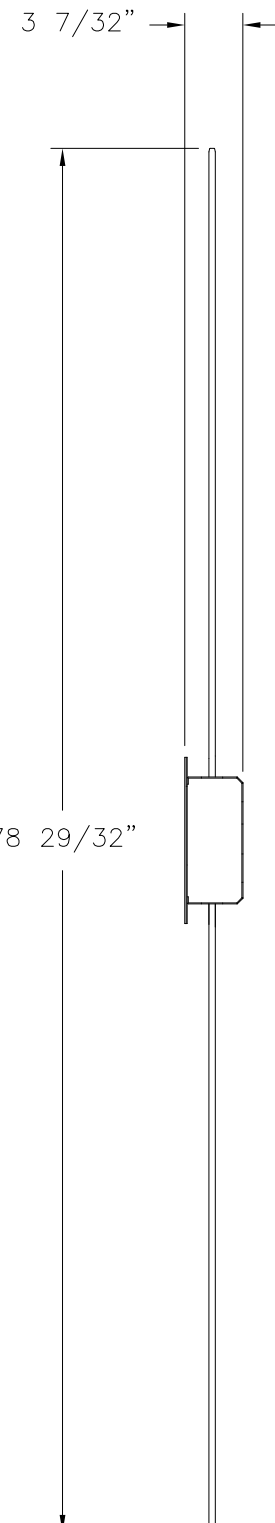
| REVISIONS |                              |            |          |
|-----------|------------------------------|------------|----------|
| REV       | DESCRIPTION                  | DATE       | APPROVED |
| A         | UPDATED COMPONENTS & DETAILS | 08/13/18   | R.L.     |
| B         | REVISED PER NEW CODE         | 02/10/2021 | R.L.     |



**MULTI-POINT LOCKING SYSTEM**

STAINLESS STEEL

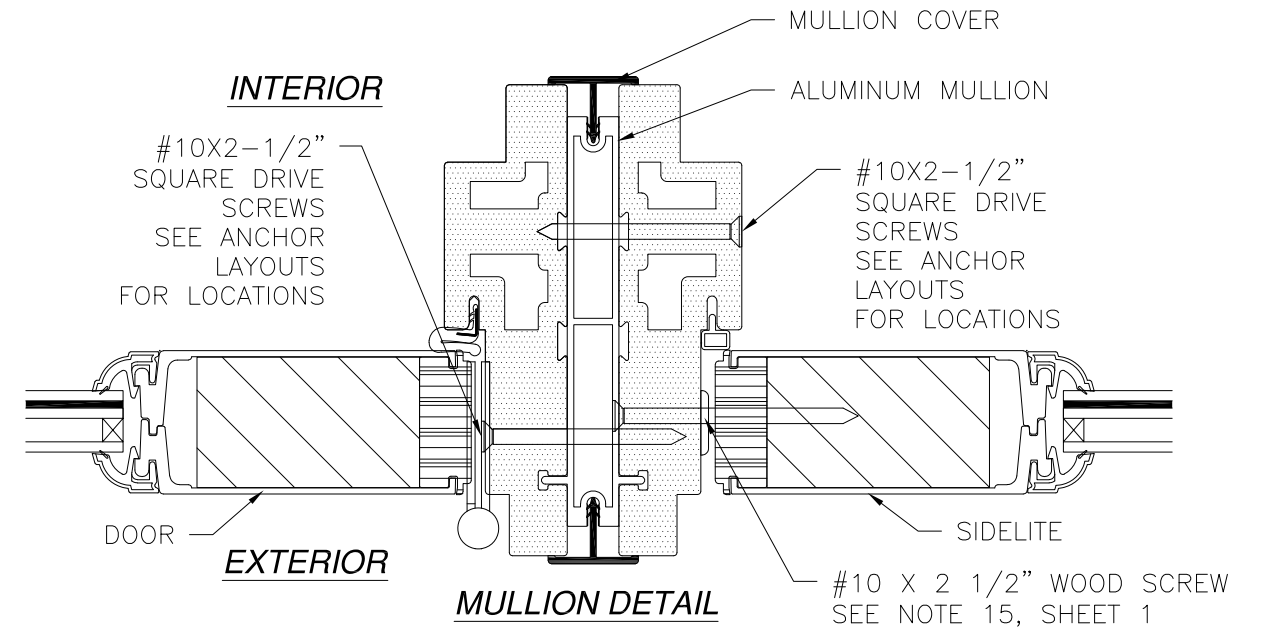
PART NUMBER: 1, BY JAM YUAN ENTERPRISES CO. LTD



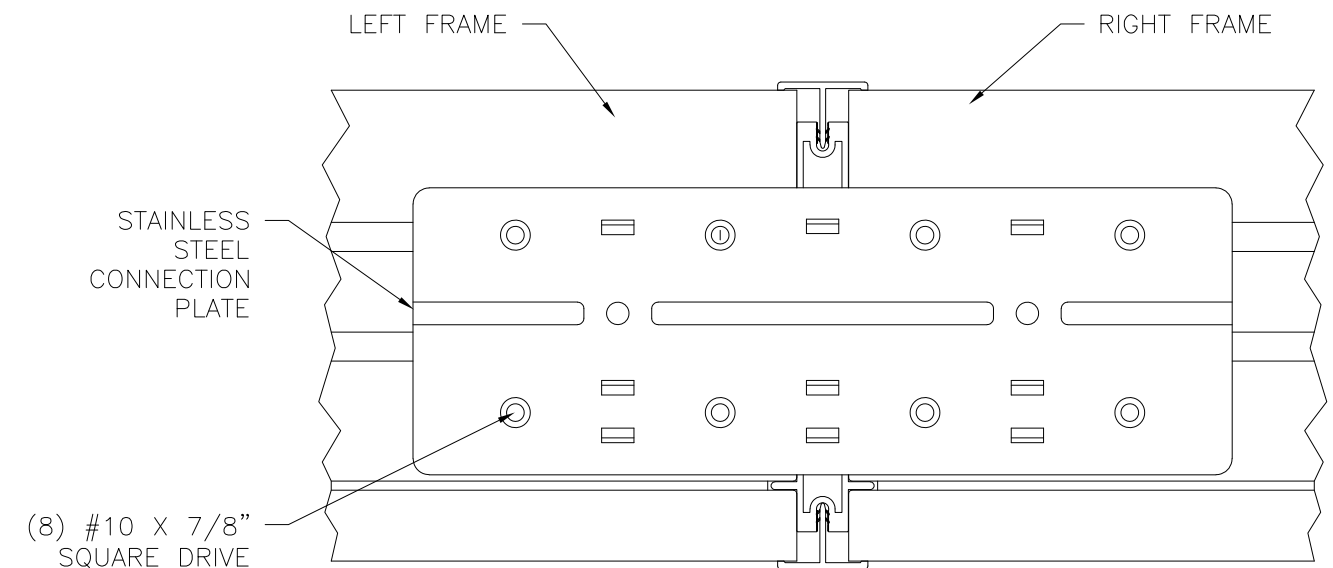
**TOP/BOTTOM DRIVE BAR SYSTEM**

STAINLESS STEEL

PART NUMBER: 3, BY JAM YUAN ENTERPRISES CO. LTD



**MULLION DETAIL**



**FRAME CONNECTION DETAIL**

SIGNED: 02/10/2021

NAN YA PLASTICS CORP. USA  
8989 NORTH LOOP EAST  
HOUSTON, TX 77029

SERIES SLPS 3/4 LITE FIBERGLASS  
OUT-SWING PATIO DOOR - IMPACT  
INSTALLATION DETAILS & COMPONENTS

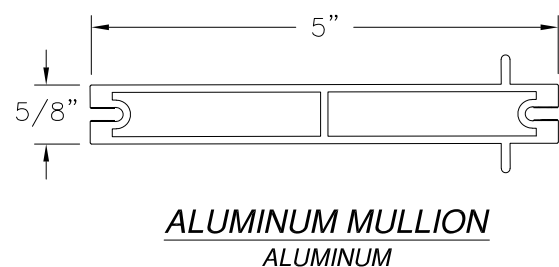
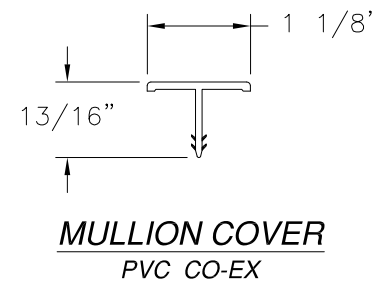
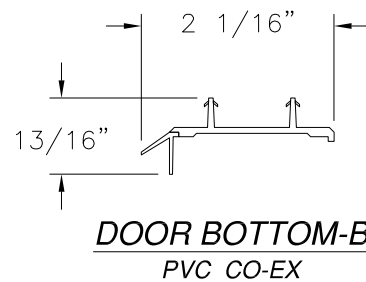
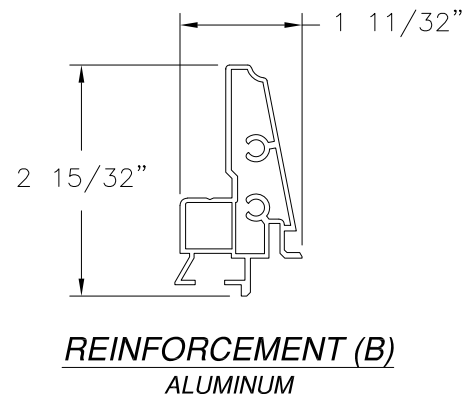
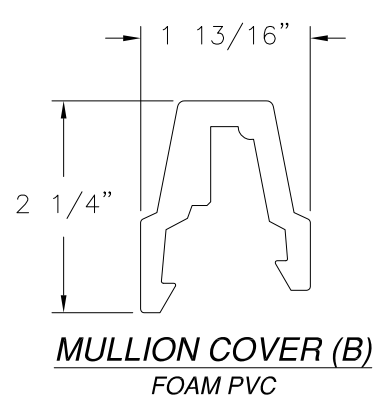
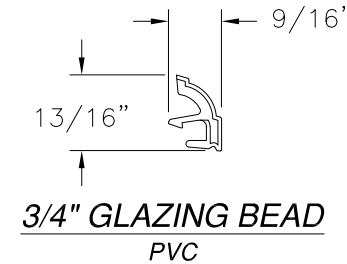
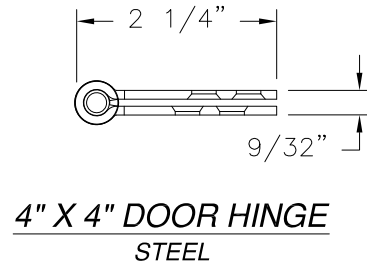
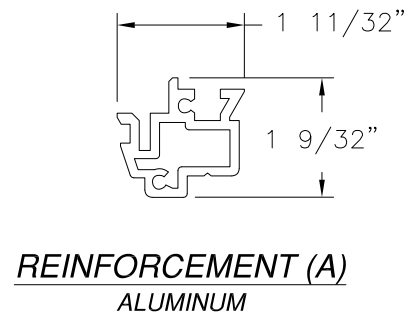
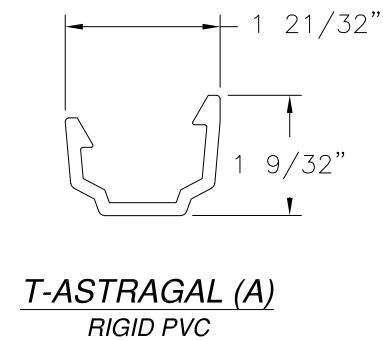
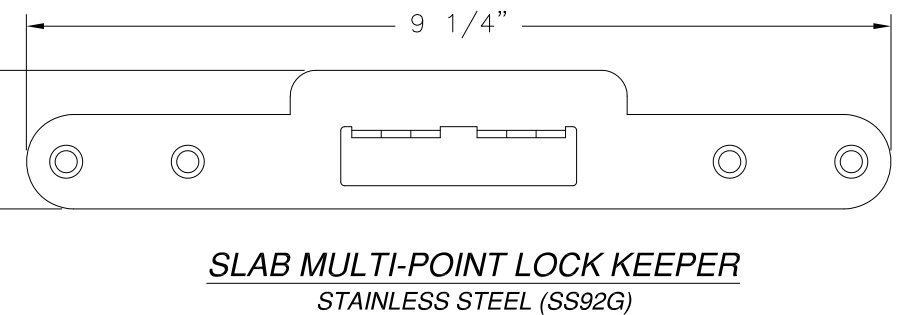
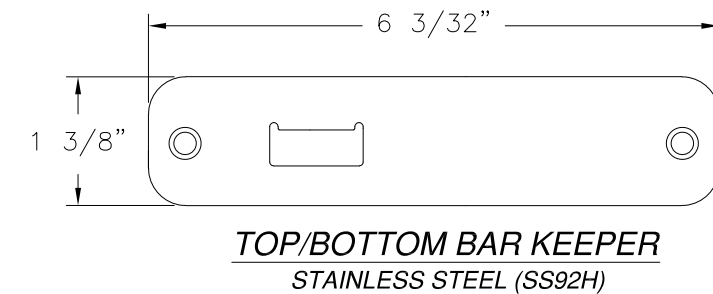
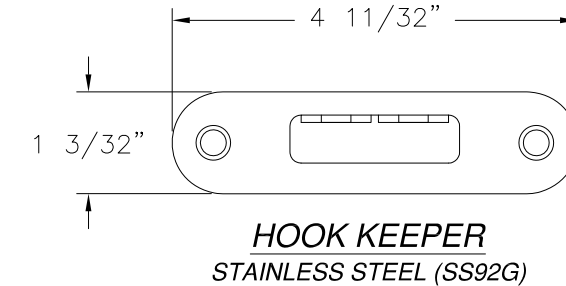
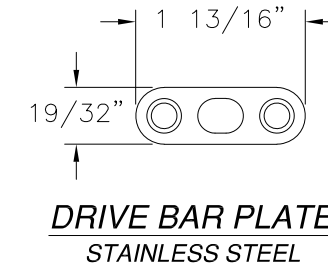
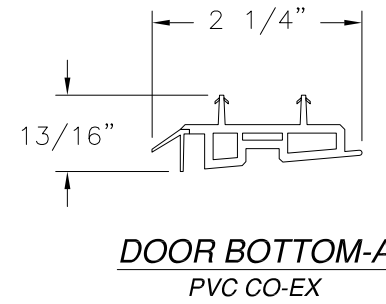
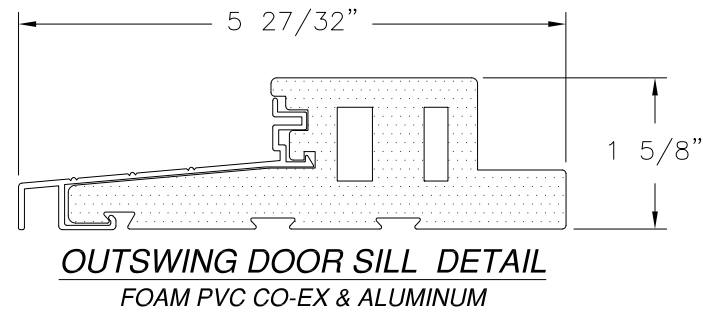
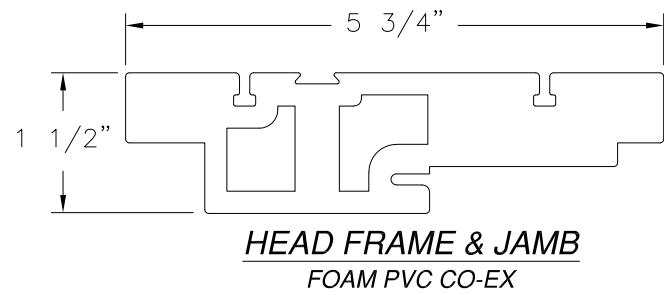
|                |                     |                |
|----------------|---------------------|----------------|
| DRAWN:<br>V.L. | DWG NO.<br>08-02312 | REV<br>B       |
| SCALE NTS      | DATE 10/16/14       | SHEET 14 OF 15 |

L. ROBERTO LOMAS P.E.  
1432 WOODFORD RD LEWISVILLE, NC 27023  
434-688-0609 rllomas@rlomaspe.com



Luis R. Lomas P.E.  
TX No.: 101889

| REVISIONS |                              |            |          |
|-----------|------------------------------|------------|----------|
| REV       | DESCRIPTION                  | DATE       | APPROVED |
| A         | UPDATED COMPONENTS & DETAILS | 08/13/18   | R.L.     |
| B         | REVISED PER NEW CODE         | 02/10/2021 | R.L.     |



SIGNED: 02/10/2021

NAN YA PLASTICS CORP. USA  
8989 NORTH LOOP EAST  
HOUSTON, TX 77029

SERIES SLPS 3/4 LITE FIBERGLASS  
OUT-SWING PATIO DOOR - IMPACT  
COMPONENTS

|                |                     |                |
|----------------|---------------------|----------------|
| DRAWN:<br>V.L. | DWG NO.<br>08-02312 | REV<br>B       |
| SCALE NTS      | DATE 10/16/14       | SHEET 15 OF 15 |

L. ROBERTO LOMAS P.E.  
1432 WOODFORD RD LEWISVILLE, NC 27023  
434-688-0609 rllomas@rlomaspe.com



Luis R. Lomas P.E.  
TX No.: 101889