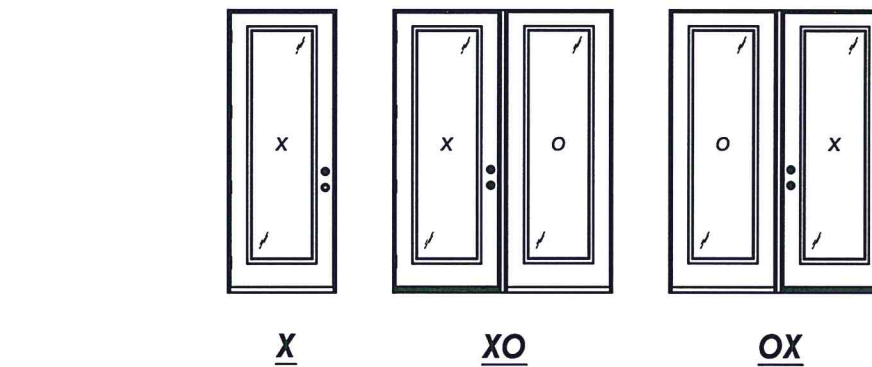
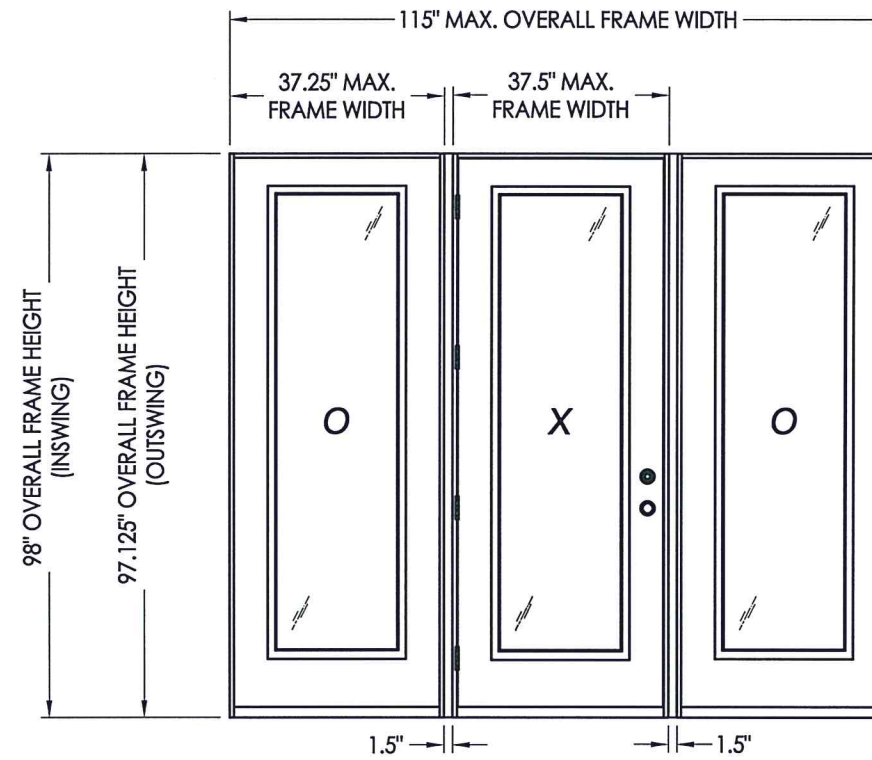


# plastpro

5200 W. CENTURY BLVD.  
LOS ANGELES, CA 90045

## GLAZED FIBERGLASS DOORS SINGLES w/ or w/o SIDELITES IN SWING / OUT SWING "IMPACT"



CONFIGURATION	MAX. FRAME DIMENSION	JAMB REINFORCEMENT	DESIGN PRESSURE (PSF) IN SWING		DESIGN PRESSURE (PSF) OUT SWING	
			POSITIVE	NEGATIVE	POSITIVE	NEGATIVE
X	37.5" x 98.0"	N/A	+45.0	-50.0	+45.0	-45.0
OX/XO	74.75" x 98.0"	N/A	+40.0	-45.0	+40.0	-40.0
	76.25" x 98.0"	2X	+45.0	-50.0	+45.0	-45.0
OXO	112.0" x 98.0"	N/A	+40.0	-45.0	+40.0	-40.0
	115.0" x 98.0"	2X	+45.0	-50.0	+45.0	-45.0

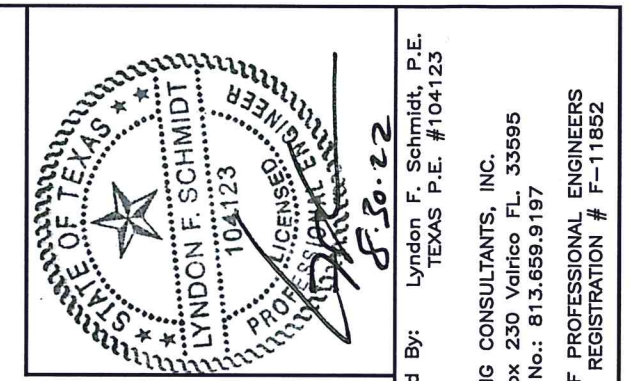
### EVALUATED FOR USE IN THE STATE OF TEXAS

The Fiberglass Door system described herein complies with the 2018 International Residential Code (IRC), Sections R301 & R609 and the 2018 International Building Code (IBC), Sections 1404.13, 1609, 1709.5, 2403 and 2404 subject to the following conditions:

1. Anchors shall be as listed and spaced as shown in the details. Anchor embedment to base material shall be beyond wall dressing or stucco.
2. This system has been tested and evaluated as a large missile impact protective system for installation in areas that require wind borne debris protection. This product meets missile level "D" as defined in ASTM E 1996.
3. Allowable design pressure requirements must be equal to or less than the design pressure rating shown in the design pressure chart, sheet 1 of this drawing.
4. Conditions not covered by this drawing are subject to further engineering analysis.

### TABLE OF CONTENTS

SHEET #	DESCRIPTION
1	Typical Elevations, Design Pressures & General Notes
2	Door Panel Details
3	Sidelite Panel Details
4	Elevations
5	Horizontal Cross Sections
6	Horizontal & Vertical Cross Sections
7	Vertical Cross Sections
8	Frame Anchoring
8	Hardware Details
9	Components
10	Bill of Materials & Components



Documents Prepared By: Lyndon F. Schmidt, P.E.  
TEXAS P.E. #104123

R.W. BUILDING CONSULTANTS, INC.  
P.O. Box 230 Valrico FL 33595  
Phone No.: 813.659.9197

TEXAS BOARD OF PROFESSIONAL ENGINEERS  
CERTIFICATE OF REGISTRATION # F-11852

PRODUCT: PLASTPRO INC FIBERGLASS DOOR

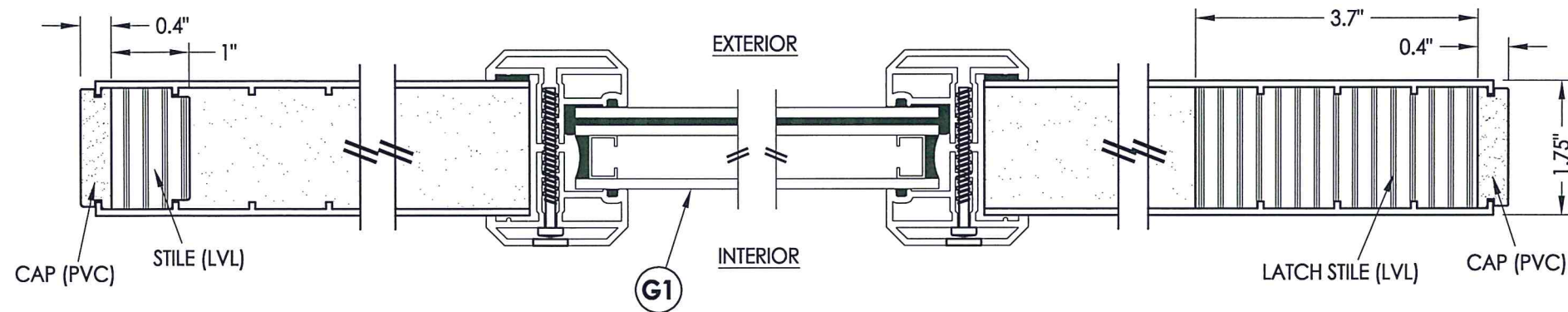
PART OR ASSEMBLY: TYPICAL ELEVATION, DESIGN PRESSURES & GENERAL NOTES

NO.	DATE	BY	REVISIONS

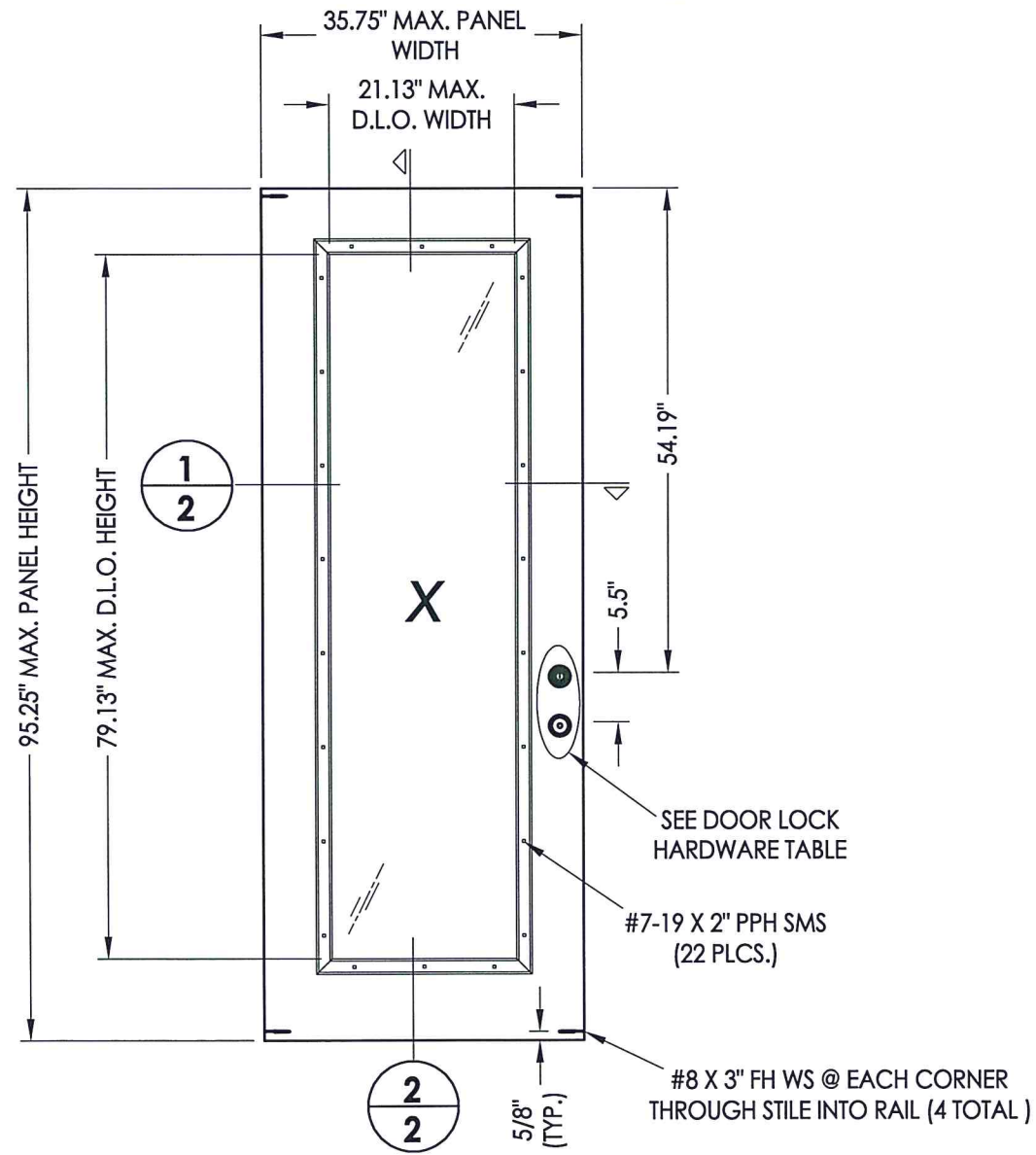
DATE: 8/18/22  
SCALE: N.T.S.  
DWG. BY: LFS  
CHK. BY: RW  
DRAWING NO.: TX-5283  
SHEET 1 OF 10



Z:\Clients\Plastpro, Inc PERMANENT\B - TD\TDI - DR XXXX 8-0 OPQ & GLZ Impact\C - Drawings\TX-5283.dwg

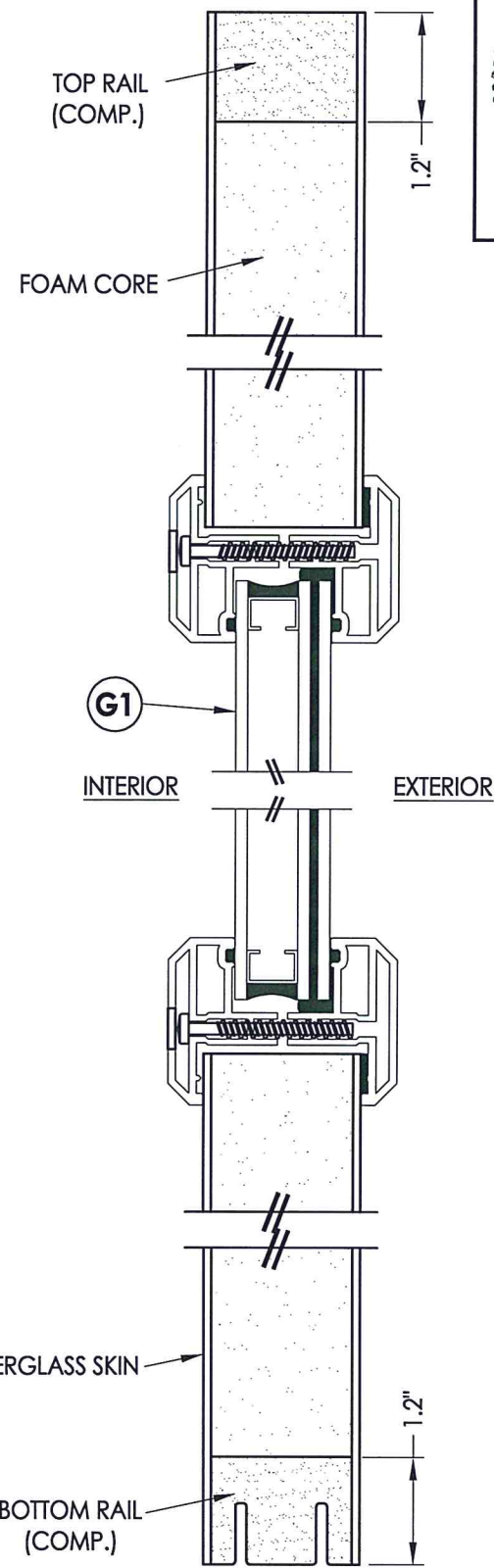


**1**  
**2** HORIZONTAL CROSS SECTION

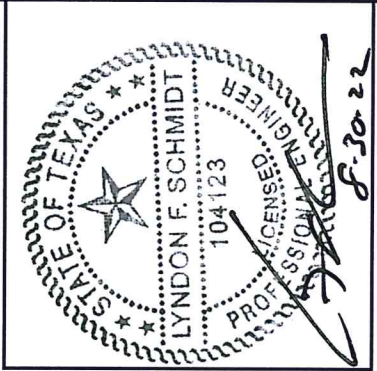


**50** PLASTPRO DOOR PANEL

HARDWARE TABLE	
MANUFACTURER	MODEL
KWIKSET	KNOB: SERIES (400)
	DEADBOLT: SERIES (660)
KWIKSET	KNOB: SIGNATURE SERIES
	DEADBOLT: SIGNATURE SERIES (980)
SCHLAGE	KNOB: F-SERIES (F51)
	DEADBOLT: B-SERIES (B60)



**2**  
**2** VERTICAL CROSS SECTION



Documents Prepared By: Lyndon F. Schmidt, P.E.  
TEXAS P.E. #104123

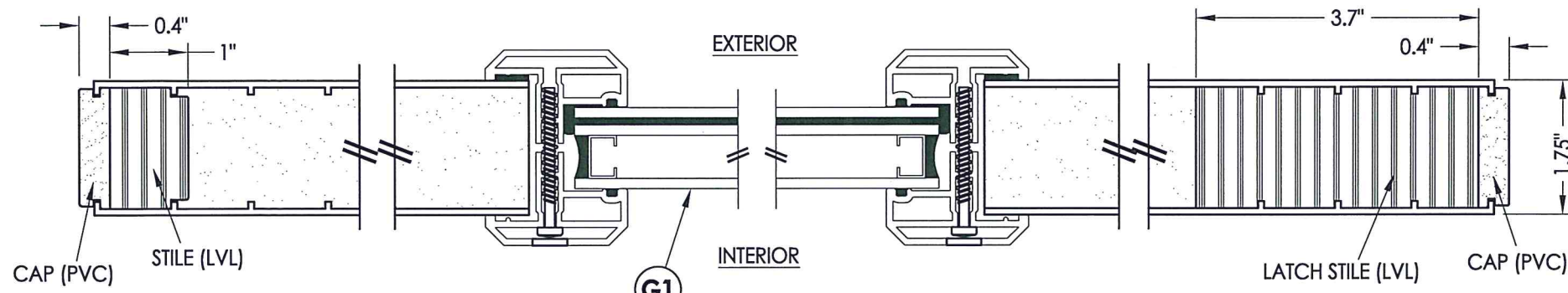
**RW** BUILDING CONSULTANTS, INC.  
P.O. Box 230 Valrico FL 33595  
Phone No.: 813.659.9197

TEXAS BOARD OF PROFESSIONAL ENGINEERS  
CERTIFICATE OF REGISTRATION # F-11852

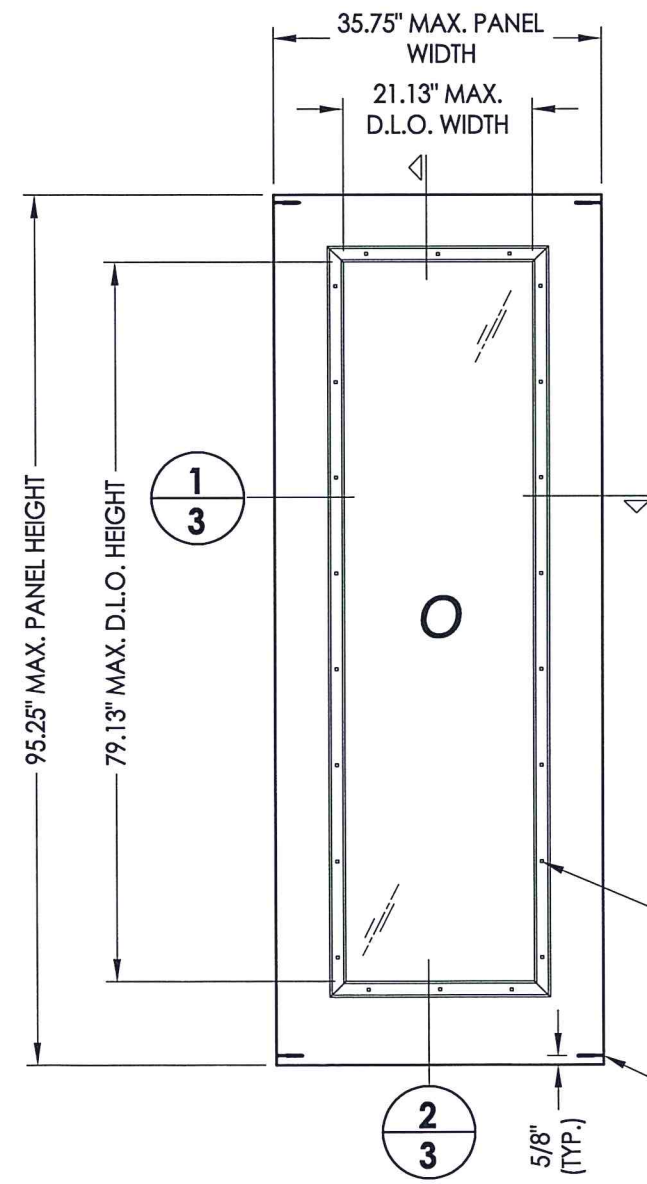
PRODUCT:	PLASTPRO INC FIBERGLASS DOOR	
PART OR ASSEMBLY:	DOOR PANEL DETAILS	
NO.	DATE	BY
		REVISIONS
DATE:	8/18/22	
SCALE:	N.T.S.	
DWG. BY:	LFS	
CHK. BY:	RW	
DRAWING NO.:	TX-5283	
SHEET	2 OF 10	

© 2022 R.W. BUILDING CONSULTANTS INC.



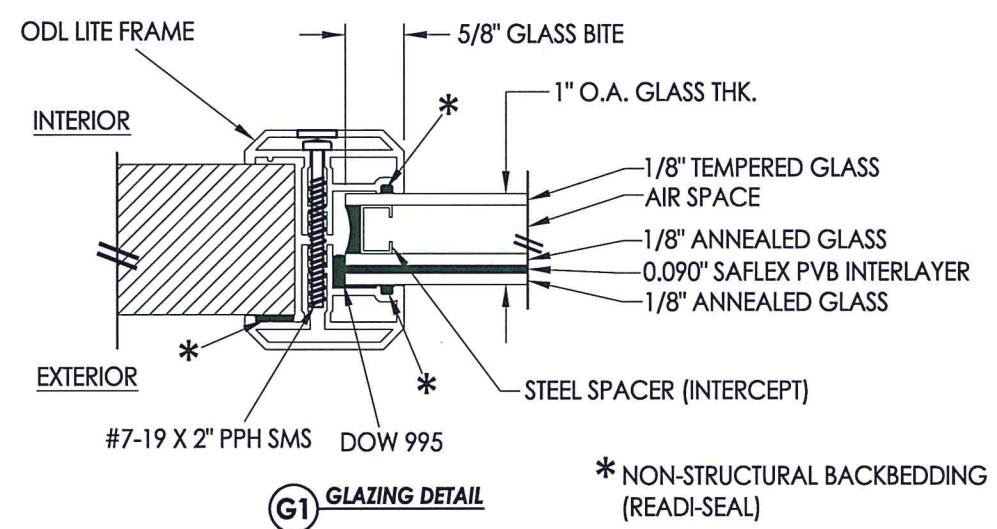


**1**  
**3** HORIZONTAL CROSS SECTION

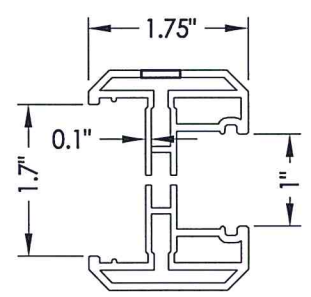


**50** PLASTPRO SIDELITE PANEL

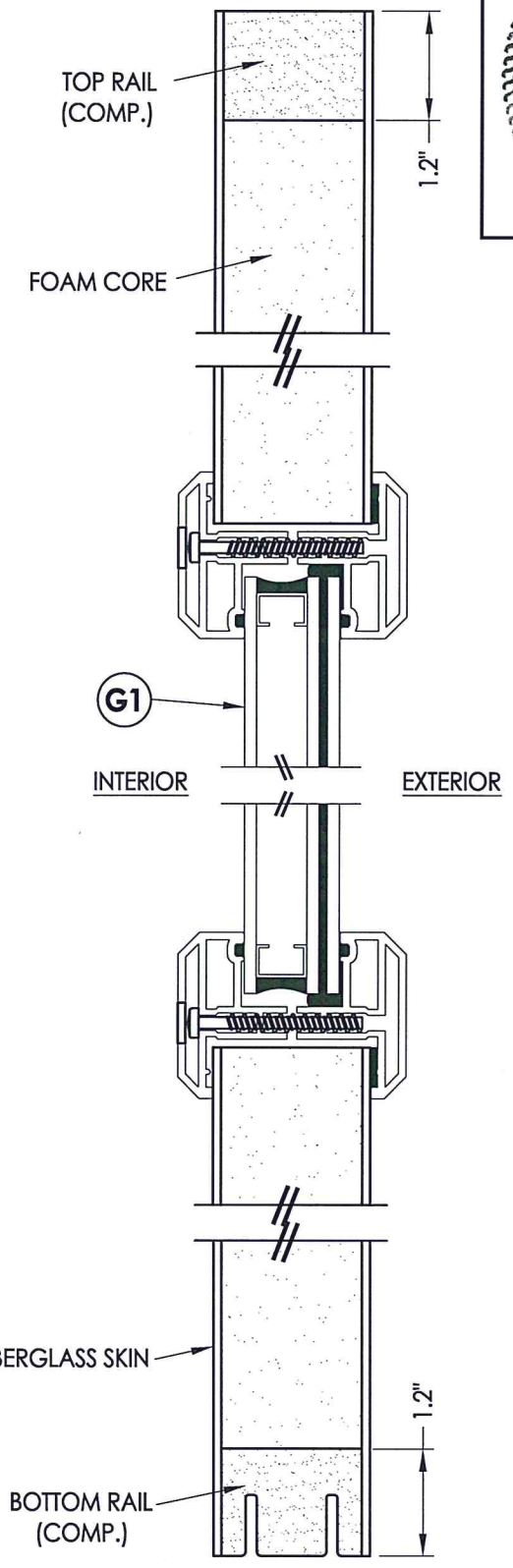
FIBERGLASS SKIN: 0.075" MIN. THK.  
FOAM CORE: POLYURETHANE



**G1** GLAZING DETAIL



ODL ALUMINUM LITE FRAME  
"Flat Frame" Profile



**2**  
**3** VERTICAL CROSS SECTION



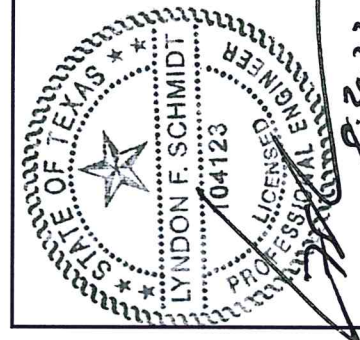
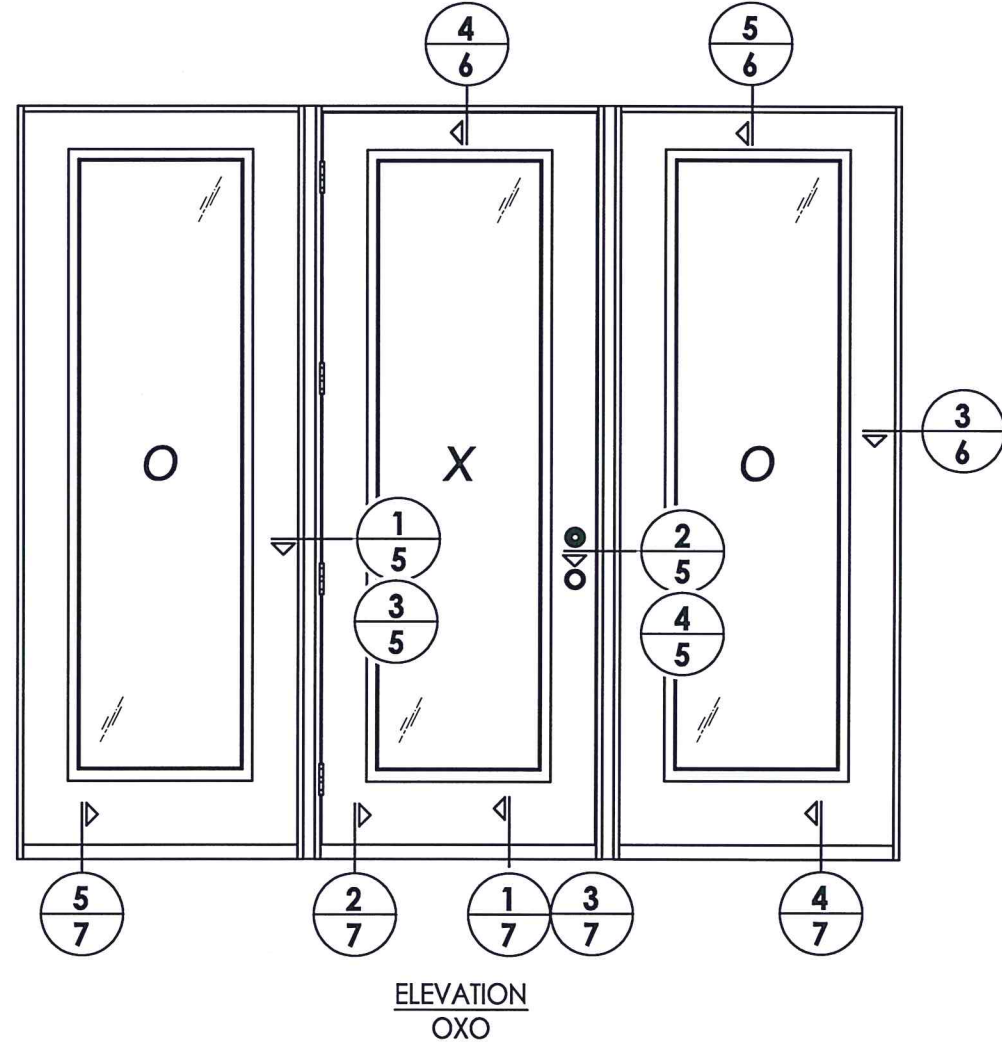
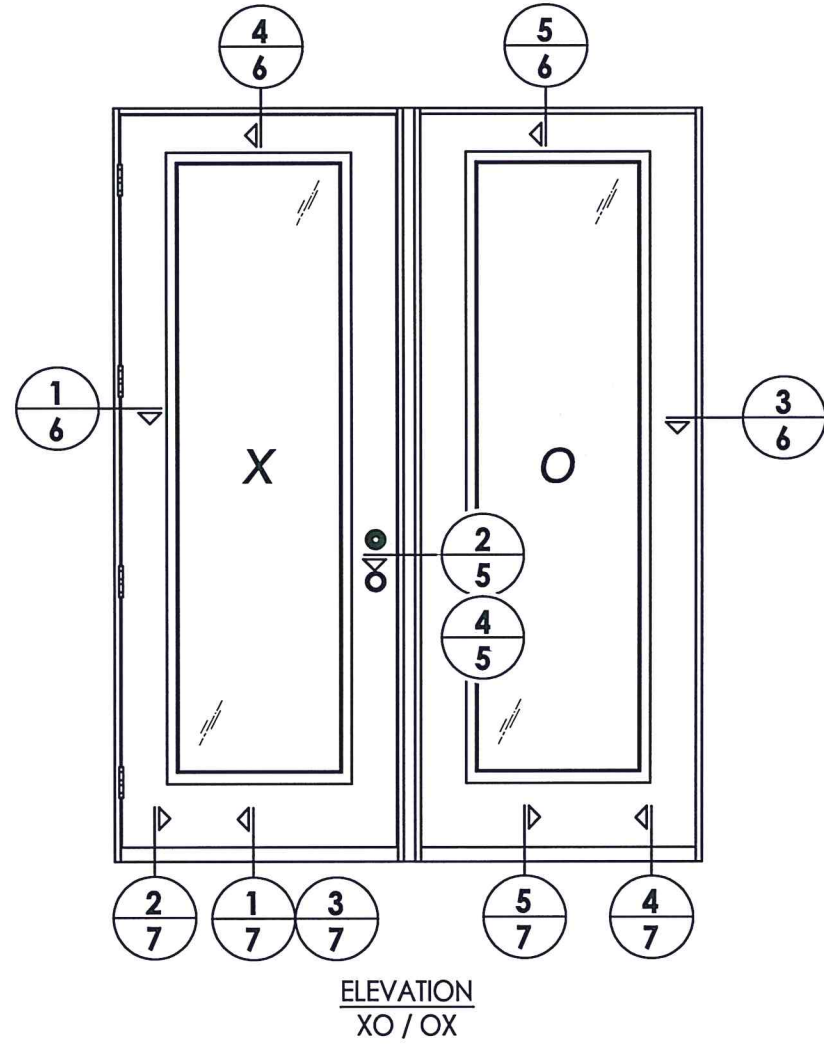
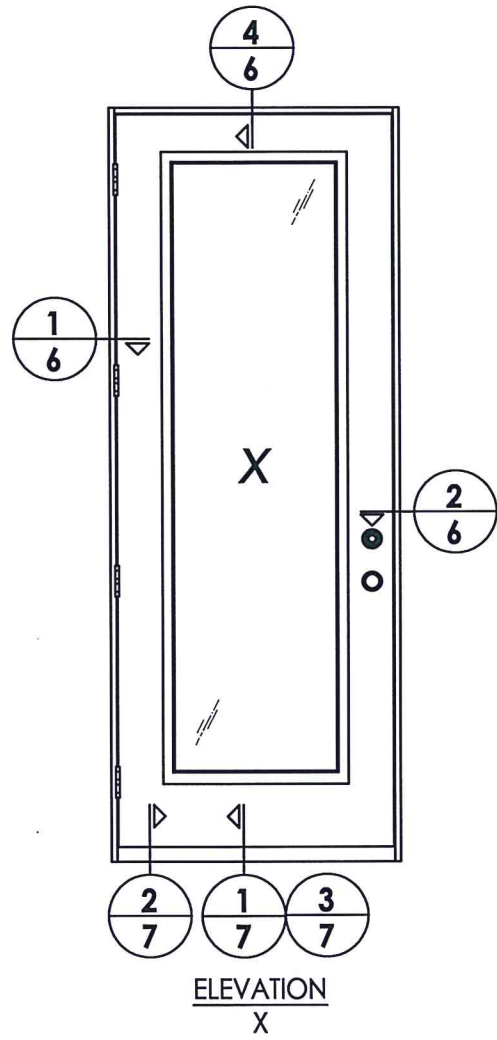
Documents Prepared By: Lyndon F. Schmidt, P.E.  
TEXAS P.E. #104123

**RW** BUILDING CONSULTANTS, INC.  
P.O. Box 230 Vairico FL 33595  
Phone No.: 813.659.9197  
TEXAS BOARD OF PROFESSIONAL ENGINEERS  
CERTIFICATE OF REGISTRATION # F-11852

PRODUCT: PLASTPRO INC  
FIBERGLASS DOOR  
PART OR ASSEMBLY: SIDELITE  
PANEL DETAILS

NO.	DATE	BY	REVISIONS

DATE: 8/18/22  
SCALE: N.T.S.  
DWG. BY: LFS  
CHK. BY: RW  
DRAWING NO.: TX-5283  
SHEET 3 OF 10



Documents Prepared By: Lyndon F. Schmidt, P.E.  
TEXAS P.E. #104123

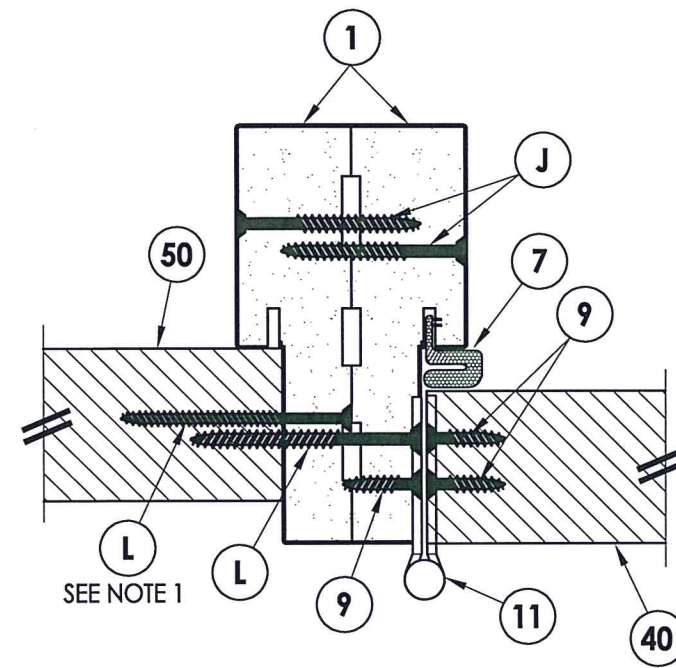
**RW** BUILDING CONSULTANTS, INC.  
P.O. Box 230 Vairico FL 33595  
Phone No.: 813.659.9197  
TEXAS BOARD OF PROFESSIONAL ENGINEERS  
CERTIFICATE OF REGISTRATION # F-11852

PRODUCT: PLASTPRO INC  
FIBERGLASS DOOR  
PART OR ASSEMBLY:  
ELEVATIONS

NO.	DATE	BY

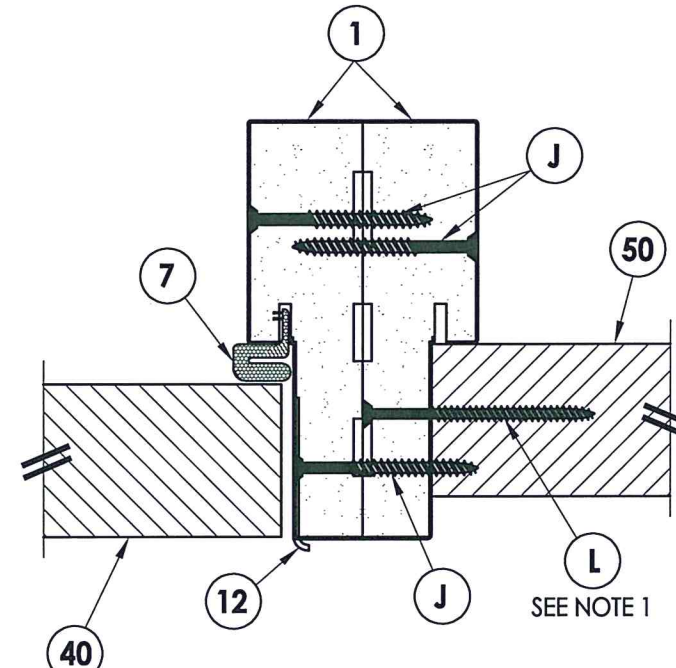
DATE: 8/18/22  
SCALE: N.T.S.  
DWG. BY: LFS  
CHK. BY: RW  
DRAWING NO.:  
TX-5283  
SHEET 4 OF 10





**1** HORIZONTAL CROSS SECTION  
**5** Outwing shown (Inswing similar)  
 Back-to-Back Jamb

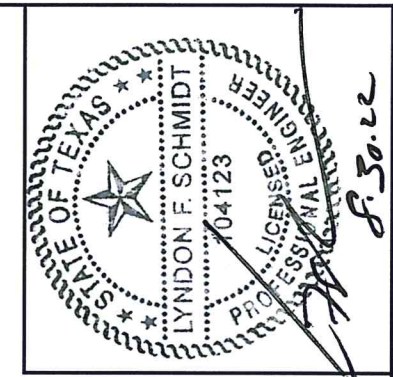
INTERIOR



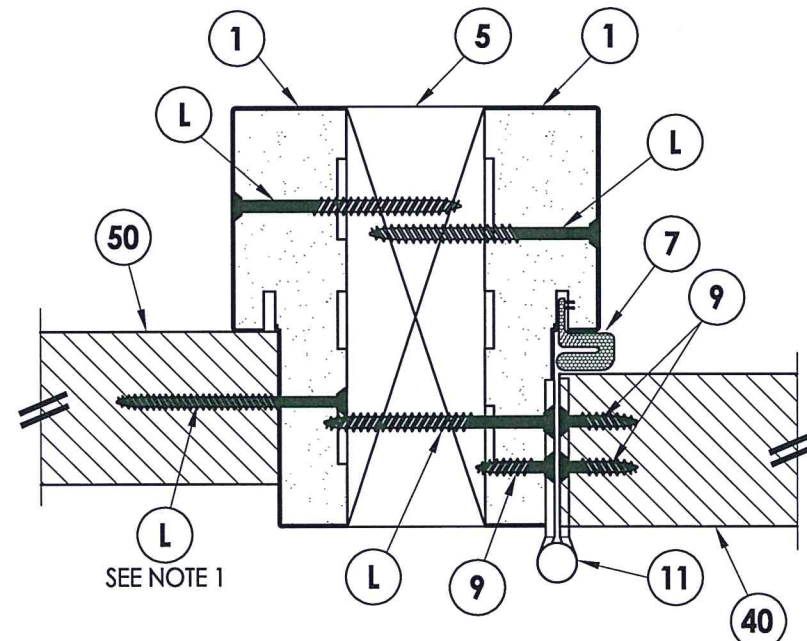
**2** HORIZONTAL CROSS SECTION  
**5** Outwing shown (Inswing similar)  
 Back-to-Back Jamb

EXTERIOR

**NOTE:**  
 1. Spacing for item L: 6" from each end and 5 more  
 equally spaced along sidelite jamb (7 total).

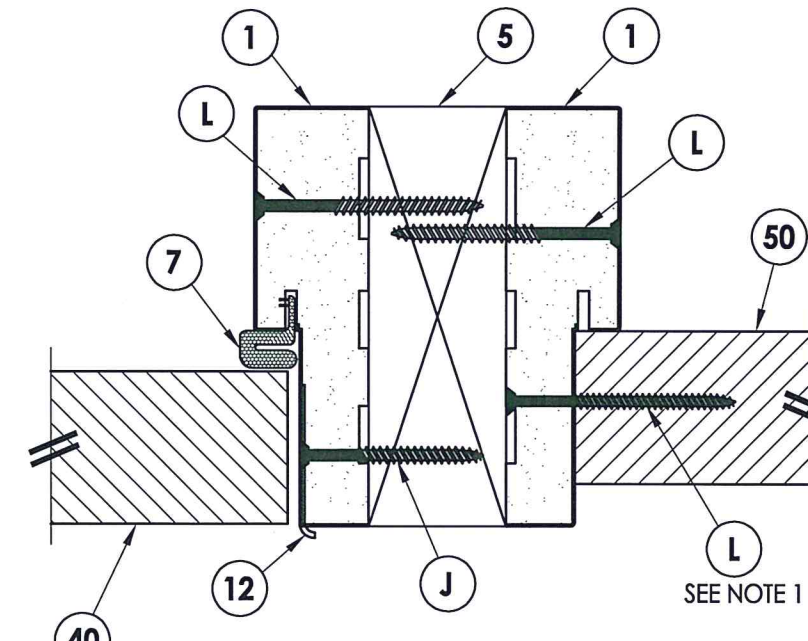


Documents Prepared By: Lyndon F. Schmidt, P.E.  
 TEXAS P.E. #104123  
 R.W. BUILDING CONSULTANTS, INC.  
 P.O. Box 230 Valrico FL 33595  
 Phone No.: 813.659.9197  
 TEXAS BOARD OF PROFESSIONAL ENGINEERS  
 CERTIFICATE OF REGISTRATION # F-11852



**3** HORIZONTAL CROSS SECTION  
**5** Outwing shown (Inswing similar)  
 Shown w/ 2X Reinforcement

INTERIOR



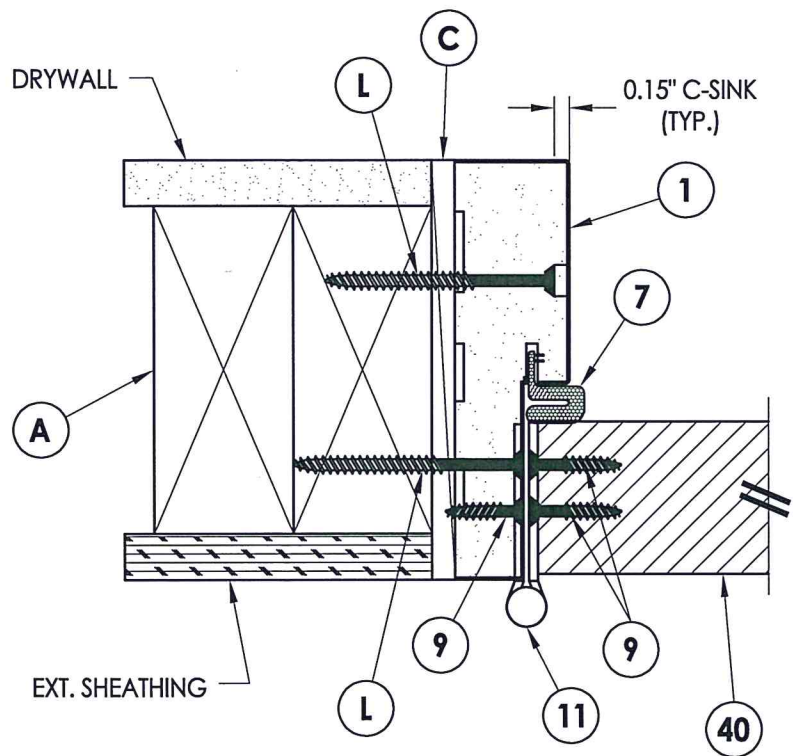
**4** HORIZONTAL CROSS SECTION  
**5** Outwing shown (Inswing similar)  
 Shown w/ 2X Reinforcement

EXTERIOR

PRODUCT:		PLASTPRO INC FIBERGLASS DOOR
PART OR ASSEMBLY:		HORIZONTAL CROSS SECTIONS
NO.	DATE	BY
REVISIONS		
DATE: 8/18/22		
SCALE: N.T.S.		
DWG. BY: LFS		
CHK. BY: RW		
DRAWING NO.: TX-5283		
SHEET 5 OF 10		

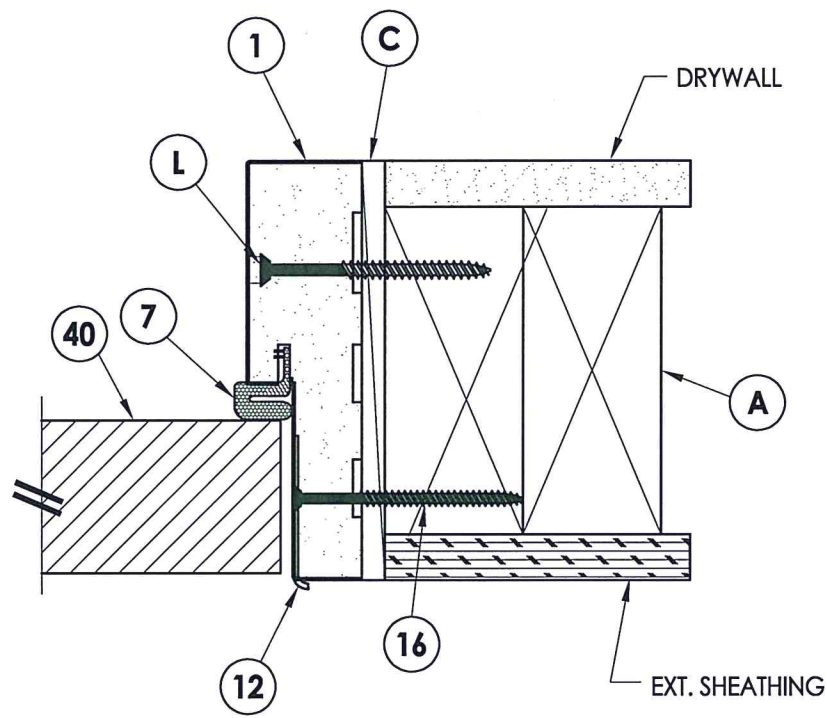


Z:\Clients\Plastpro, Inc PERMANENT B - TDI\TDI - DR XXXX 8-0 OPQ & GLZ Impact\C - Drawings\TX-5283.dwg

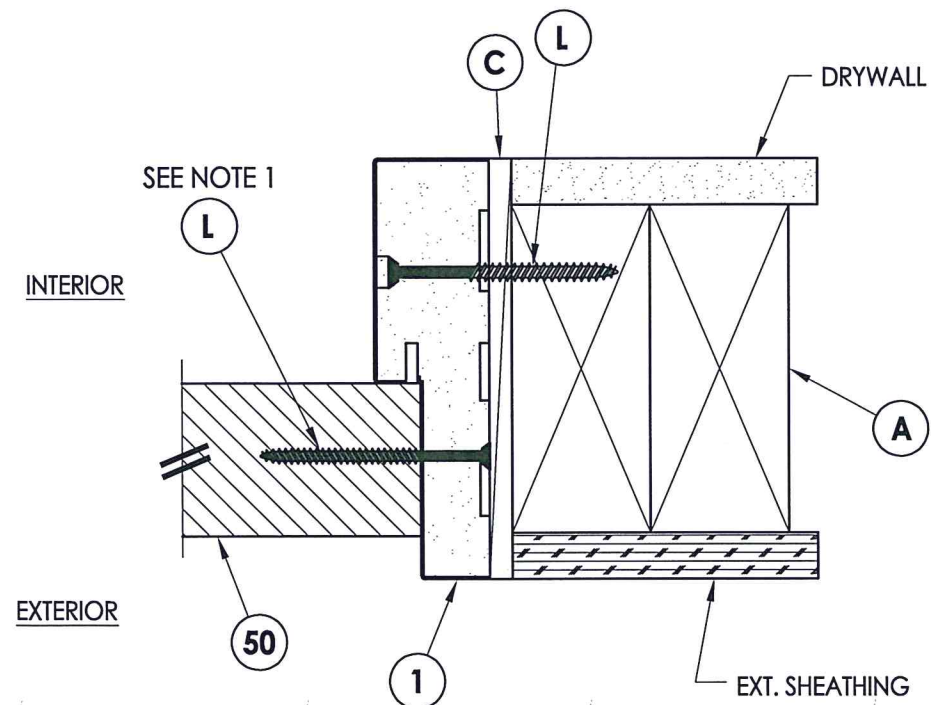


**1 HORIZONTAL CROSS SECTION**  
6 Outswing shown (Inswing similar)

INTERIOR  
  
EXTERIOR

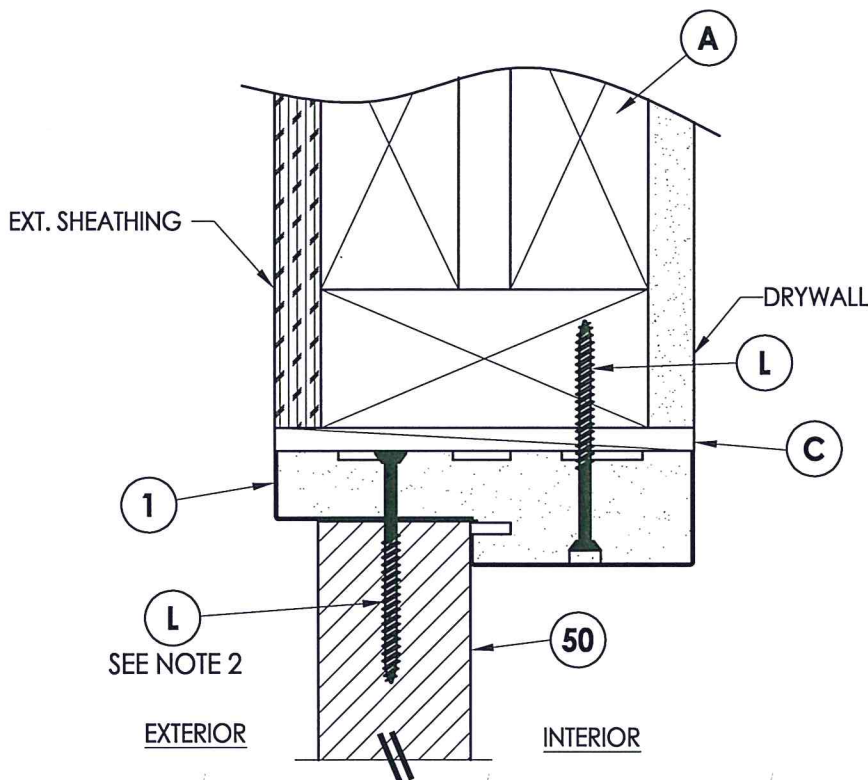


**2 HORIZONTAL CROSS SECTION**  
6 Outswing shown (Inswing similar)



**3 HORIZONTAL CROSS SECTION**  
6 Outswing shown (Inswing similar)

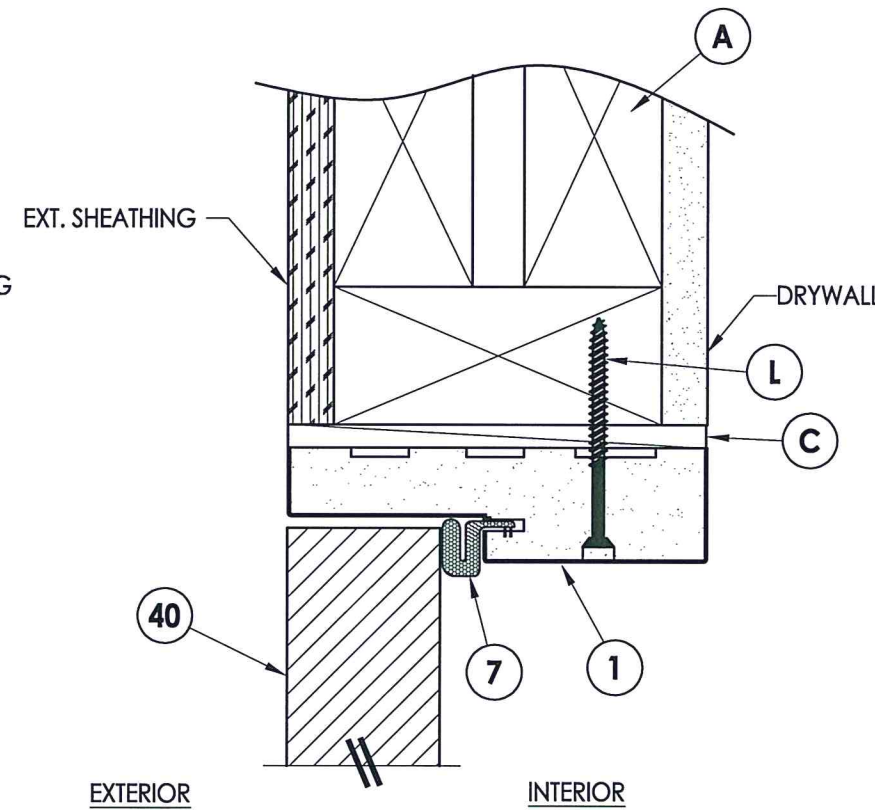
INTERIOR  
  
EXTERIOR



**5 VERTICAL CROSS SECTION**  
6 Outswing shown (Inswing similar)

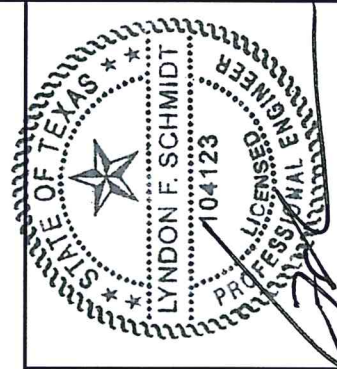
EXT. SHEATHING  
  
EXTERIOR  
  
INTERIOR

- NOTES:  
 1. Spacing for item L: 6" from each end plus 5 more equally spaced along sidelite jamb (7 total).  
 2. Spacing for item L @ head & sill: 6" from ends (2 total).



**4 VERTICAL CROSS SECTION**  
6 Outswing shown (Inswing similar)

EXTERIOR  
  
INTERIOR



Documents Prepared By: Lyndon F. Schmidt, P.E.  
 TEXAS P.E. #104123

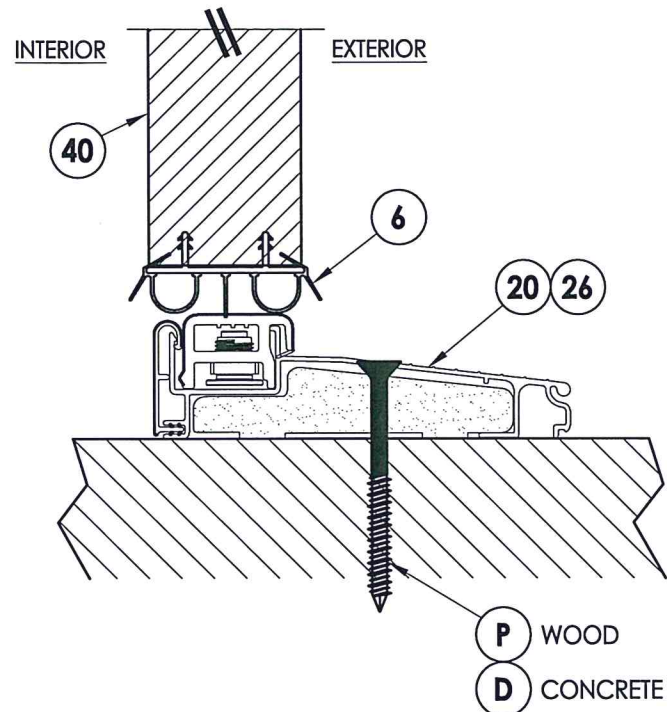
*RW* BUILDING CONSULTANTS, INC.  
 P.O. Box 230 Valrico FL 33595  
 Phone No.: 813.659.9197

TEXAS BOARD OF PROFESSIONAL ENGINEERS  
 CERTIFICATE OF REGISTRATION # F-11852

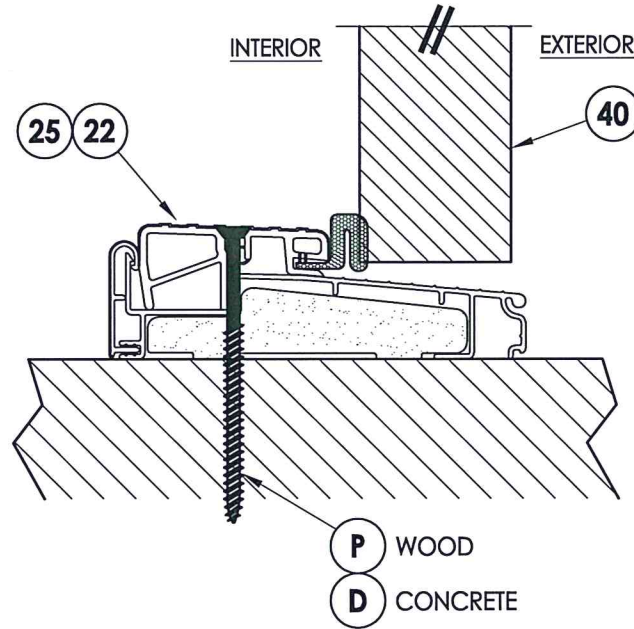
PRODUCT:	PLASTPRO INC FIBERGLASS DOOR	PART OR ASSEMBLY: HORIZONTAL & VERTICAL CROSS SECTIONS	BY
			NO. DATE
REVISIONS			
		DATE: 8/18/22	
		SCALE: N.T.S.	
		DWG. BY: LFS	
		CHK. BY: RW	
		DRAWING NO.: TX-5283	
		SHEET 6 OF 10	



Z:\Clients\Plastpro, Inc PERMANENT\B - TD\TDI - DR XXXX 8-0 OPQ & GLZ Impact\C - Drawings\TX-5283.dwg

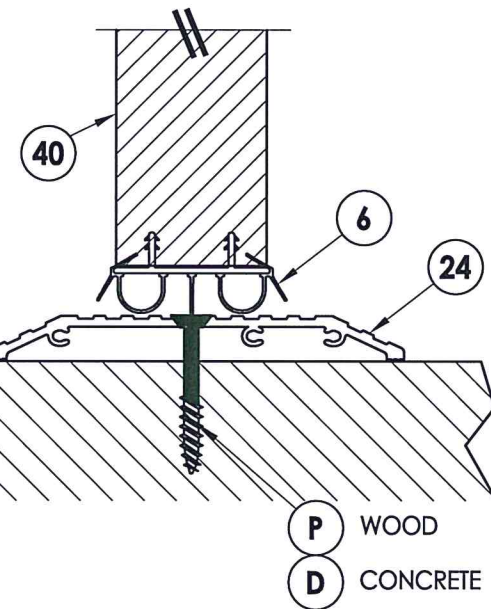
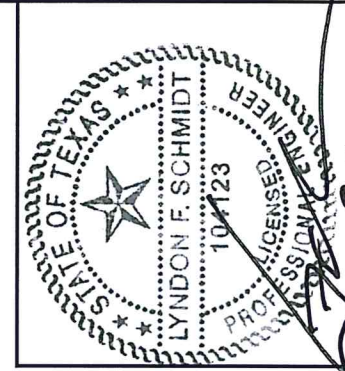


1 VERTICAL CROSS SECTION  
7 Inswing Sill

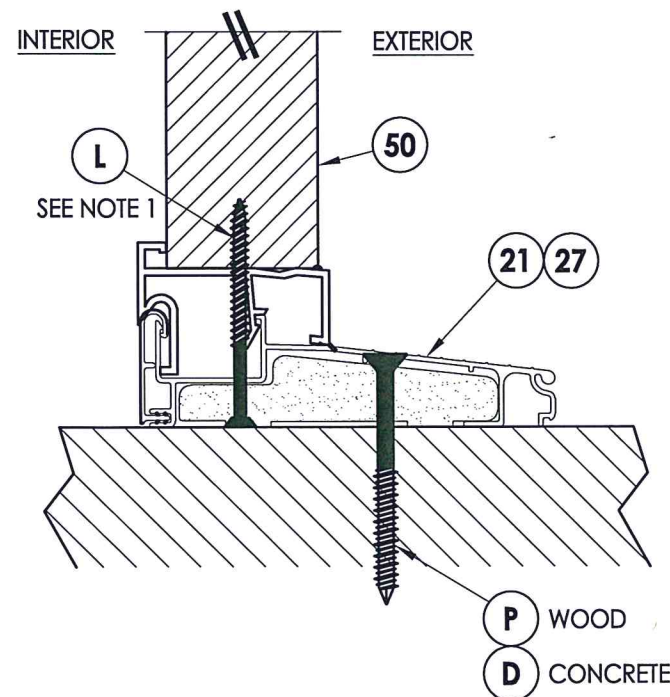


2 VERTICAL CROSS SECTION  
7 Outswing Sill

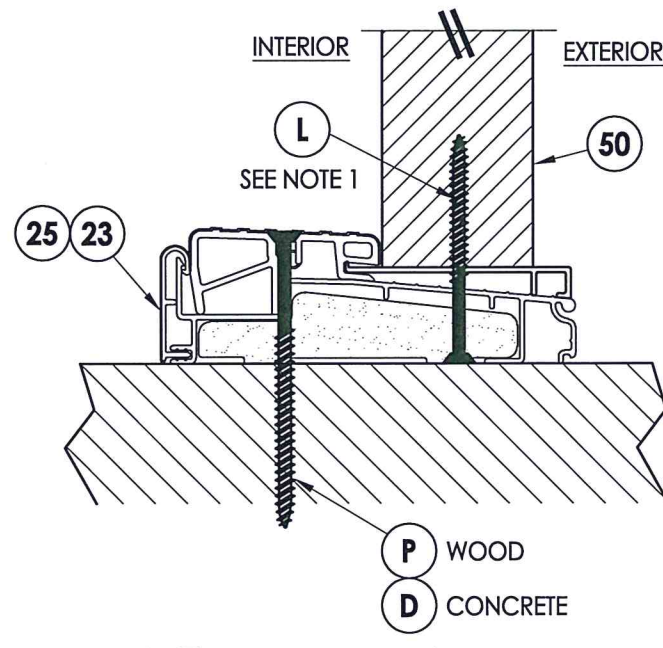
NOTE:  
1. Spacing for item L @ head & sill: 6" from each end (2 total).



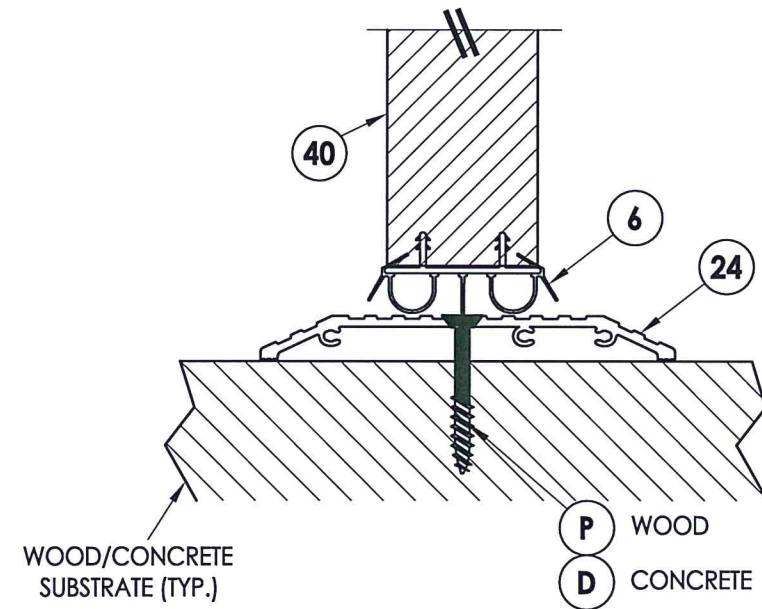
3 VERTICAL CROSS SECTION  
7 ADA Sill



4 VERTICAL CROSS SECTION  
7 Inswing Sill



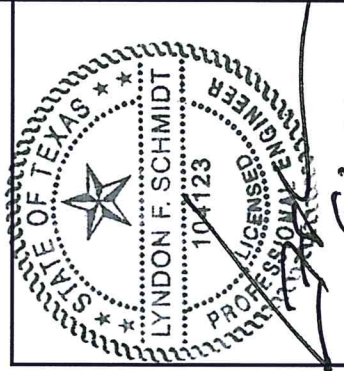
5 VERTICAL CROSS SECTION  
7 Outswing Sill



3 VERTICAL CROSS SECTION  
7 ADA Sill

Documents Prepared By: Lyndon F. Schmidt, P.E. TEXAS P.E. #104123		BUILDING CONSULTANTS, INC. P.O. Box 230 Valrico FL, 33595 Phone No.: 813.659.9197	
PLASTPRO INC FIBERGLASS DOOR		VERTICAL CROSS SECTIONS	
PART OR ASSEMBLY:		REVISIONS	
NO.	DATE	BY	
DATE: 8/18/22			
SCALE: N.T.S.			
DWG. BY: LFS			
CHK. BY: RW			
DRAWING NO.: TX-5283			
SHEET 7 OF 10			

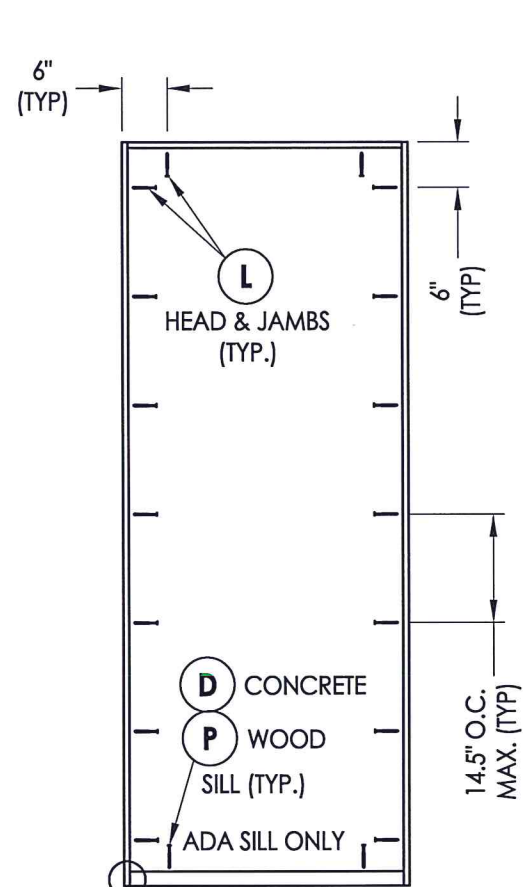
© 2022 R.W. BUILDING CONSULTANTS INC.



Documents Prepared By: Lyndon F. Schmidt, P.E.  
 TEXAS P.E. #104123

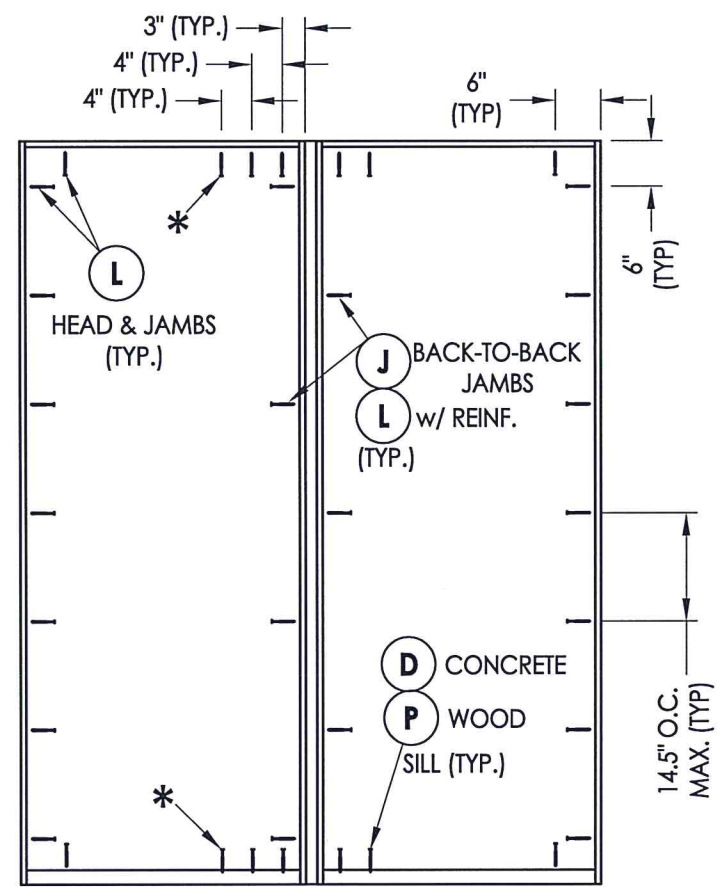
**RW** BUILDING CONSULTANTS, INC.  
 P.O. Box 230 Valrico FL 33595  
 Phone No.: 813.659.9197

TEXAS BOARD OF PROFESSIONAL ENGINEERS  
 CERTIFICATE OF REGISTRATION # F-11852

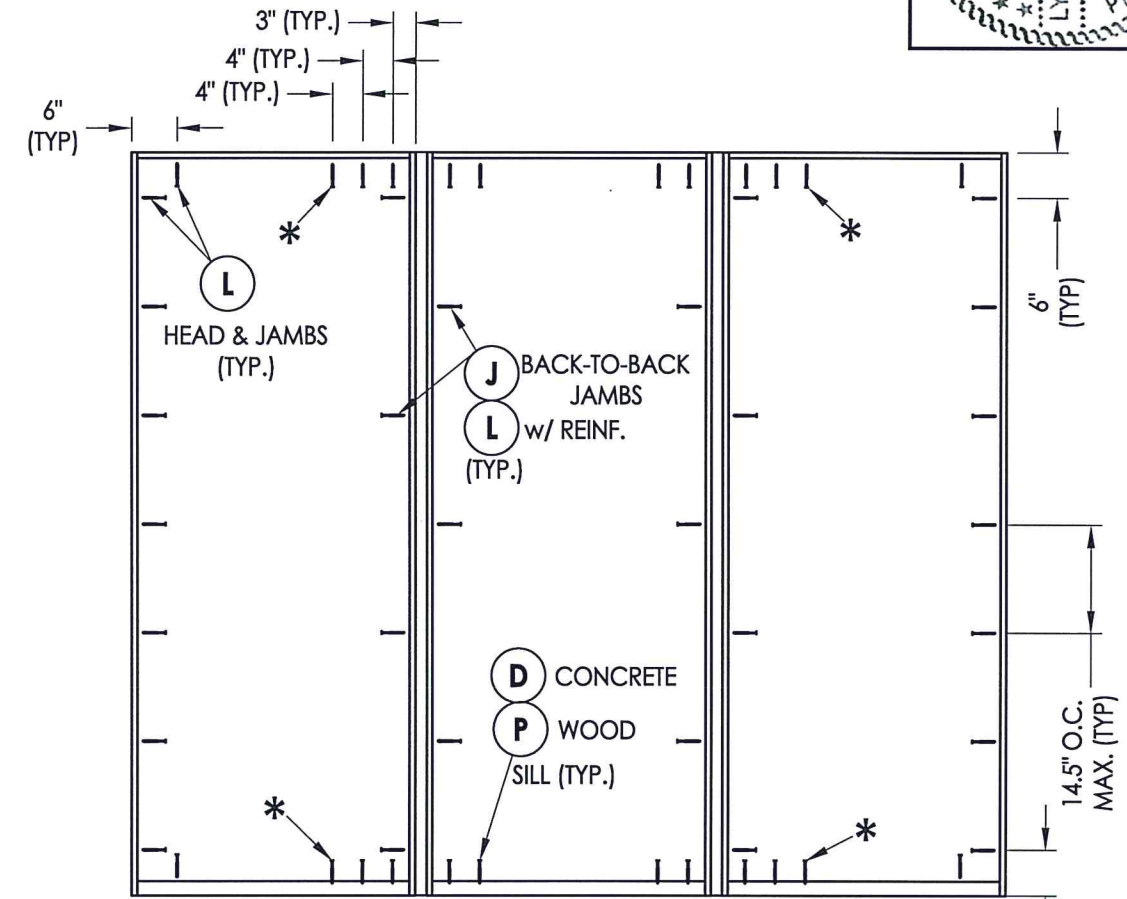


**X**

NOTE: FRAME CORNERS ATTACHED w/  
 (3) #10 X 2-1/2" FH WOOD SCREWS (TYP.)



**XO / OX**



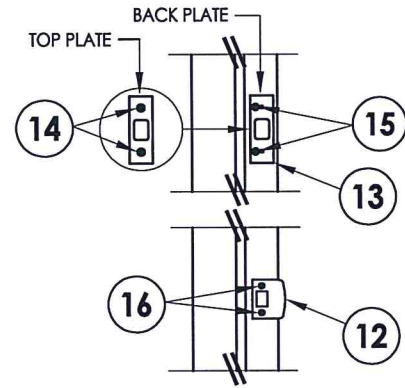
**OXO**

**FRAME ANCHORING**

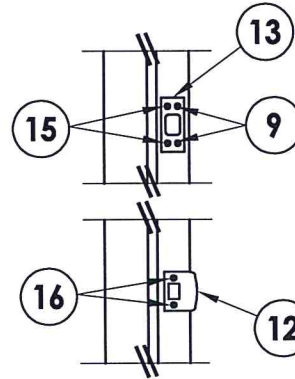
\* NOTE: THESE ANCHORS ARE REQUIRED FOR DESIGN PRESSURE > 40 PSF ONLY

PRODUCT: PLASTPRO INC FIBERGLASS DOOR	
PART OR ASSEMBLY: FRAME ANCHORING	
NO.	DATE
BY	REVISIONS
DATE: 8/18/22	
SCALE: N.T.S.	
DWG. BY: LFS	
CHK. BY: RW	
DRAWING NO.: TX-5283	
SHEET 8 OF 10	



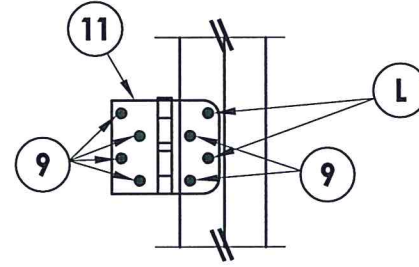


**SCHLAGE HARDWARE**

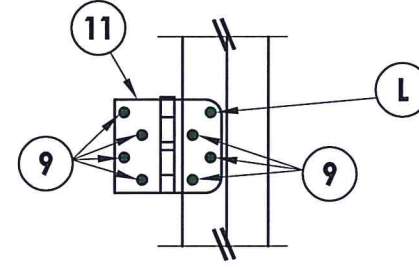


**KWIKSET HARDWARE**

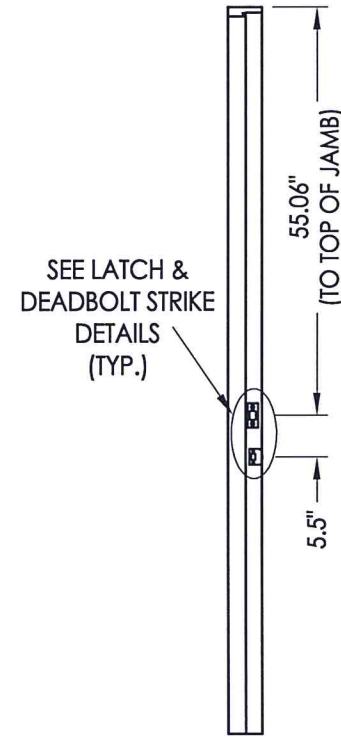
**LATCH & DEADBOLT HARDWARE STRIKE DETAILS**



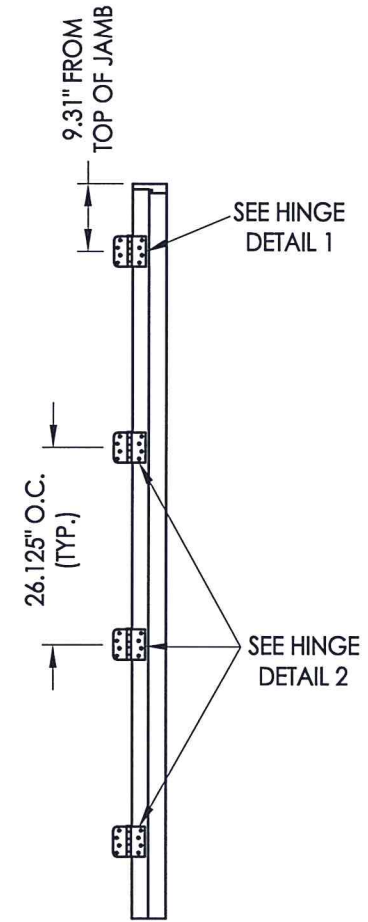
**HINGE DETAIL 1**



**HINGE DETAIL 2**

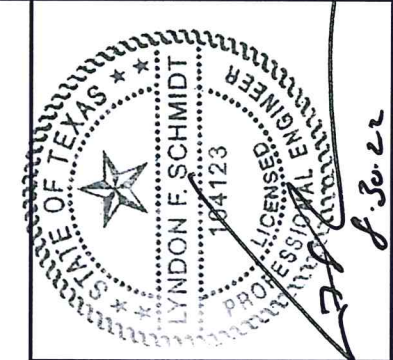


**STRIKE JAMB**



**HINGE JAMB**

**HARDWARE DETAILS**



Documents Prepared By: Lyndon F. Schmidt, P.E.  
 TEXAS P.E. #104123  
 RW BUILDING CONSULTANTS, INC.  
 P.O. Box 230 Valrico FL 33595  
 Phone No.: 813.659.9197  
 TEXAS BOARD OF PROFESSIONAL ENGINEERS  
 CERTIFICATE OF REGISTRATION # F-11852

PRODUCT: PLASTIPRO INC FIBERGLASS DOOR  
 PART OR ASSEMBLY:  
 HARDWARE DETAILS

NO.	DATE	BY	REVISIONS

DATE: 8/18/22  
 SCALE: N.T.S.  
 DWG. BY: LFS  
 CHK. BY: RW  
 DRAWING NO.: TX-5283  
 SHEET 9 OF 10



Z:\Clients\Plastpro, Inc PERMANENT\B - TD\N\DI - DR XXXX 8-0 OPQ & GLZ Impact\C - Drawings\TX-5283.dwg

BILL OF MATERIALS		
ITEM #	DESCRIPTION	MATERIAL
A	2X FRAMING (G >= 0.42)	WOOD
C	1/4" MAX. SHIM SPACE	-
D	1/4" Ø PFH ELCO OR ITW CONCRETE SCREW (1-3/4" MIN. EMBEDMENT)	STEEL
G	3/16" Ø PFH ITW CONCRETE SCREW (1-3/4" MIN. EMB.)	STEEL
J	#10 X 2" PFH WOOD SCREW	STEEL
L	#10 X 2-1/2" PFH WOOD SCREW (1.15" MIN. EMB.)	STEEL
P	#10 PFH WOOD SCREW (1-1/2" MIN. EMB.)	STEEL
1	POLY FIBER JAMB	COMP
5	2X REINFORCEMENT (G >= 0.55)	WOOD
6	DOOR SWEEP	PVC
7	WEATHERSTRIP	FOAM
9	#9 X 3/4" PFH WOOD SCREW	STEEL
11	4" X 4" HINGE	STEEL
12	LATCH STRIKE PLATE	STEEL
13	DEADBOLT STRIKE PLATE	STEEL
14	10-32 X 3/8" PFH MACHINE SCREW	STEEL
15	#12 X 2-1/2" PFH WOOD SCREW	STEEL
16	#8 X 2-1/2" PFH WOOD SCREW	STEEL
20	INSWING THRESHOLD	ALUM/COMP
21	INSWING THRESHOLD w/ SIDELITE ADAPTER	ALUM/COMP
22	OUTSWING THRESHOLD	ALUM/COMP
23	OUTSWING THRESHOLD w/ SIDELITE ADAPTER	ALUM/COMP
24	ADA THRESHOLD	ALUM
25	OUTSWING THRESHOLD	ALUM/WOOD
26	INSWING THRESHOLD	ALUM/WOOD
27	INSWING THRESHOLD w/ SIDELITE ADAPTER	ALUM/WOOD
40	DOOR PANEL	-
50	SIDELITE PANEL	-

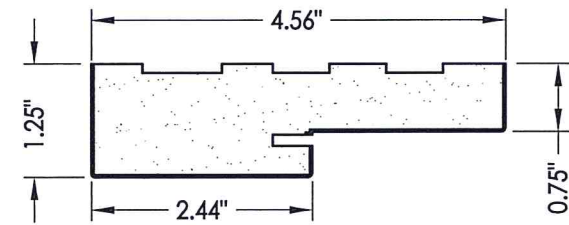
**CONCRETE ANCHOR NOTES:**

- Concrete anchor locations at the corners may be adjusted to maintain the min. edge distance to mortar joints.
- Concrete anchor locations noted as "MAX. ON CENTER" must be adjusted to maintain the min. edge distance to mortar joints, additional concrete anchors may be required to ensure the "MAX. ON CENTER" dimension are not exceeded.
- Concrete anchor table:

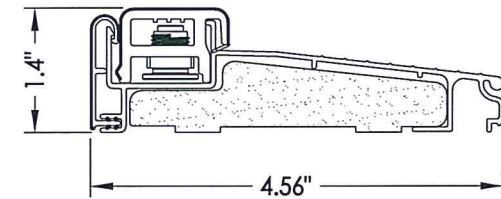
ANCHOR TYPE	ANCHOR SIZE	MIN. EMBEDMENT	MIN. CLEARANCE TO MASONRY EDGE	MIN. CLEARANCE TO ADJACENT ANCHOR
ITW BUILDEX TAPCON®	3/16"	1-1/4"	3"	1-1/2"
	1/4"	1-1/4"	2"	4"
DeWALT ULTRACON®	1/4"	1-1/4"	1"	4"

**WOOD SCREW INSTALLATION NOTES:**

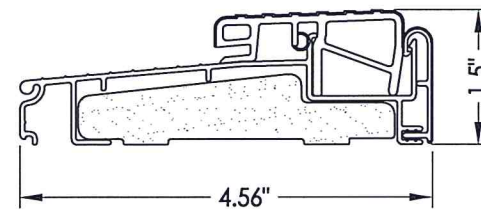
- Maintain a minimum 5/8" edge distance, 1" end distance, & 1" o.c. spacing of wood screws to prevent the splitting of wood.



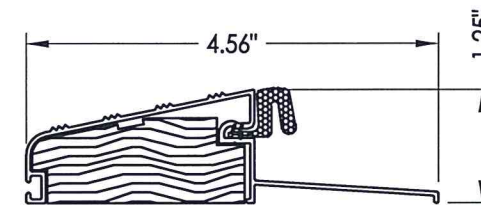
1 POLY FIBER JAMB



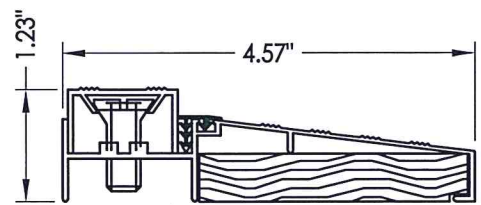
20 INSWING THRESHOLD  
Endura (Z-Series)



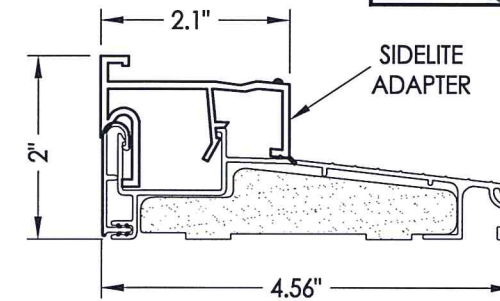
22 OUTSWING THRESHOLD  
Endura (Z-Series)



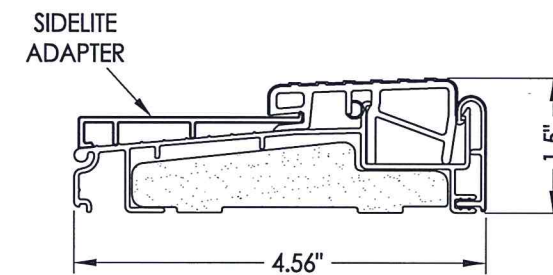
25 OUTSWING THRESHOLD  
DLP



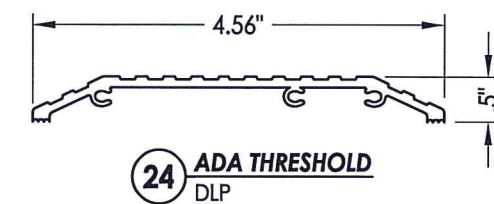
26 INSWING THRESHOLD  
DLP



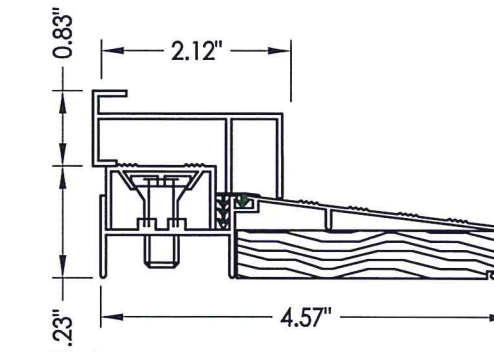
21 INSWING THRESHOLD w/ SIDELITE ADAPTER  
Endura (Z-Series)



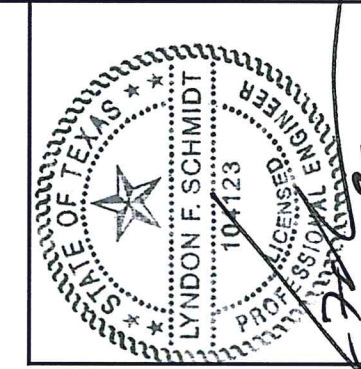
23 OUTSWING THRESHOLD w/ SIDELITE ADAPTER  
Endura (Z-Series)



24 ADA THRESHOLD  
DLP



27 INSWING THRESHOLD w/ SIDELITE ADAPTER  
DLP



Documents Prepared By: Lyndon F. Schmidt, P.E.  
TEXAS P.E. #104123

**RW** BUILDING CONSULTANTS, INC.  
P.O. Box 230 Valrico FL, 33595  
Phone No.: 813.659.9197

TEXAS BOARD OF PROFESSIONAL ENGINEERS  
CERTIFICATE OF REGISTRATION # F-11852

PRODUCT: PLASTPRO INC FIBERGLASS DOOR  
PART OR ASSEMBLY: BILL OF MATERIALS & COMPONENTS

NO.	DATE	BY	REVISIONS

DATE: 8/18/22  
SCALE: N.T.S.  
DWG. BY: LFS  
CHK. BY: RW  
DRAWING NO.: TX-5283  
SHEET 10 OF 10