

REPUBLIC DOORS AND FRAMES

DL416 GLAZED OUTSWING STEEL DOOR



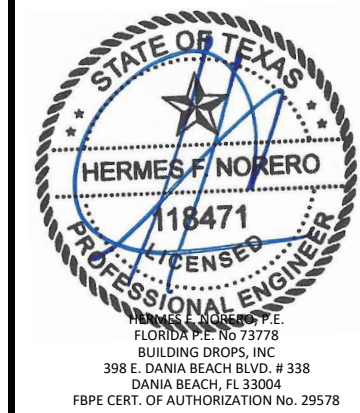
155 REPUBLIC DRIVE
MCKENZIE, TN 38201
PH: (800) 799-3667 FX: (731) 352-2556

TITLE: DL 416 GLAZED OUTSWING STEEL DOOR
INSTALLATION & GENERAL NOTES

PREPARED BY: BUILDING DROPS, INC.
398 E. DANIA BEACH BLVD., STE. 338
DANIA BEACH, FL 33004
PH: (954) 399-8478
FAX: (954) 744-4738
WEB: www.buildingdrops.com

REMARKS	BY	DATE
2018 IBC UPDATE	CA	3.28.22

THE INSTALLATION DETAILS DESCRIBED HEREIN ARE GENERIC AND MAY NOT REFLECT ACTUAL CONDITIONS FOR A SPECIFIC SITE. IF SITE CONDITIONS CAUSE INSTALLATION TO DEVIATE FROM THE REQUIREMENTS DETAILED HEREIN, A LICENSED ENGINEER OR ARCHITECT SHALL PREPARE SITE SPECIFIC DOCUMENTS FOR USE WITH THIS DOCUMENT.



DATE: 03.16.17

DWG. BY: JLA CHK. BY: HFN

SCALE: NTS

DWG. #: RDF017

SHEET: 1 OF 9

INSTALLATION NOTES:

- ONE (1) INSTALLATION ANCHOR IS REQUIRED AT EACH ANCHOR LOCATION SHOWN, UNLESS OTHERWISE STATED.
- THE NUMBER OF INSTALLATION ANCHORS DEPICTED IS THE MINIMUM NUMBER OF ANCHORS TO BE USED FOR PRODUCT INSTALLATION.
- INSTALL INDIVIDUAL INSTALLATION ANCHORS WITHIN A TOLERANCE OF ±1/16 INCH OF THE DEPICTED LOCATION IN THE ANCHOR LAYOUT DETAIL (I.E., WITHOUT CONSIDERATION OF TOLERANCES). TOLERANCES ARE NOT CUMULATIVE FROM ONE INSTALLATION ANCHOR TO THE NEXT.
- FOR INSTALLATION INFORMATION AND ANCHOR LAYOUTS ON JAMBS AND SILL, REFER TO SHEET 5.
- MINIMUM EMBEDMENT AND EDGE DISTANCE EXCLUDE WALL FINISHES, INCLUDING BUT NOT LIMITED TO STUCCO, FOAM, BRICK VENEER, AND SIDING.
- INSTALLATION ANCHORS AND ASSOCIATED HARDWARE MUST BE MADE OF CORROSION RESISTANT MATERIAL OR HAVE A CORROSION RESISTANT COATING.
- FOR GROUT FILLED BLOCK, DO NOT INSTALL INSTALLATION ANCHORS INTO MORTAR JOINTS. EDGE DISTANCE IS MEASURED FROM FREE EDGE OF BLOCK OR EDGE OF MORTAR JOINT INTO FACE SHELL OF BLOCK.
- INSTALLATION ANCHORS SHALL BE INSTALLED IN ACCORDANCE WITH ANCHOR MANUFACTURER'S INSTALLATION INSTRUCTIONS, AND ANCHORS SHALL NOT BE USED IN SUBSTRATES WITH STRENGTHS LESS THAN THE MINIMUM STRENGTH SPECIFIED BY THE ANCHOR MANUFACTURER.
- INSTALLATION ANCHOR CAPACITIES FOR PRODUCTS HEREIN ARE BASED ON SUBSTRATE MATERIALS WITH THE FOLLOWING PROPERTIES:
 - WOOD - MINIMUM SPECIFIC GRAVITY OF 0.42.
 - CONCRETE - MINIMUM COMPRESSIVE STRENGTH OF 2700 PSI.
 - GROUT-FILLED CMU - UNIT STRENGTH CONFORMS TO ASTM C-90 & GROUT CONFORMS TO ASTM C 476. GROUT SHALL HAVE MINIMUM COMPRESSIVE STRENGTH OF 2000 PSI.

GENERAL NOTES:

- THE PRODUCT SHOWN HEREIN IS DESIGNED AND MANUFACTURED TO COMPLY WITH THE 2018 INTERNATIONAL BUILDING CODE (IBC) AND INTERNATIONAL RESIDENTIAL CODE (IRC) AND HAS BEEN EVALUATED ACCORDING TO THE FOLLOWING:
 - TAS 201-94
 - TAS 202-94
 - TAS 203-94
- ADEQUACY OF THE EXISTING STRUCTURAL CONCRETE/MASONRY, 2X AND STEEL STUD FRAMING AS A MAIN WIND FORCE RESISTING SYSTEM CAPABLE OF WITHSTANDING AND TRANSFERRING APPLIED PRODUCT LOADS TO THE FOUNDATION IS THE RESPONSIBILITY OF THE ENGINEER OR ARCHITECT OF RECORD FOR THE PROJECT OF INSTALLATION.
- 2X BUCKS (WHEN USED) SHALL BE DESIGNED AND ANCHORED TO PROPERLY TRANSFER ALL LOADS TO THE STRUCTURE. BUCK DESIGN AND INSTALLATION IS THE RESPONSIBILITY OF THE ENGINEER OR ARCHITECT OF RECORD FOR THE PROJECT OF INSTALLATION.
- THE INSTALLATION DETAILS DESCRIBED HEREIN ARE GENERIC AND MAY NOT REFLECT ACTUAL CONDITIONS FOR A SPECIFIC SITE. IF SITE CONDITIONS CAUSE INSTALLATION TO DEVIATE FROM THE REQUIREMENTS DETAILED HEREIN, A LICENSED ENGINEER OR ARCHITECT SHALL PREPARE SITE SPECIFIC DOCUMENTS FOR USE WITH THIS DOCUMENT.
- APPROVED IMPACT PROTECTIVE SYSTEM **IS NOT REQUIRED** TO PROTECT THIS PRODUCT IN AREAS REQUIRING IMPACT RESISTANCE.
- DOOR & FRAME MATERIAL: STEEL 16 GAUGE (0.053") MIN. FY MIN. = 50.09 KSI
- DESIGNATION "X" STANDS FOR THE FOLLOWING:
X: OPERABLE PANEL
- GLASS MEETS THE REQUIREMENTS OF ASTM E 1300-04 GLASS CHARTS. SEE SHEET 8 FOR GLAZING DETAILS.
- STEEL COMPONENTS SHALL BE COATED OR PROVIDED WITH CORROSION RESISTANCE PROTECTION.

STEEL DOOR CONSTRUCTION:

THE OVERALL PANEL THICKNESS IS 1 3/4 INCH THICK. THE DOOR PANEL HINGE AND LOCK CHANNELS ARE 1.677" X 0.62" X 82.875" INCH LONG AND ARE CONSTRUCTED FROM 16 GAUGE (0.053") COLD-ROLLED STEEL. THE DOOR TOP AND BOTTOM END CHANNELS ARE 1.677" X 0.62" X 35.563" WIDE AND ARE CONSTRUCTED FROM 16 GAUGE COLD-ROLLED STEEL. THE DOOR SKINS / FACE SHEETS ARE CONSTRUCTED OF **16 GAUGE** (0.053") COLD-ROLLED STEEL AND ATTACHED TO THE END, HINGE AND LOCK CHANNELS. THE DOOR CORE IS CONSTRUCTED OF TYPE 99-0-3/4 KRAFT PAPER HONEYCOMB CORE AND ATTACHED TO THE FACES WITH GLUE. THE DOOR HINGE REINFORCEMENTS ARE 1.375" X 4.5" AND ARE CONSTRUCTED FROM 9 GAUGE (0.132") COLD-ROLLED STEEL. THE MORTISE DOOR LOCK REINFORCEMENTS ARE 1.677" X 5.313" X 14" AND ARE CONSTRUCTED FROM 14 GAUGE (0.072") COLD-ROLLED STEEL. THE CONTINUOUS DOOR HARDWARE REINFORCEMENTS ARE 1.677" X 6" X 73" AND ARE CONSTRUCTED FROM 12 GAUGE (0.101") COLD-ROLLED STEEL. THE DOOR EXIT DEVICE REINFORCEMENTS ARE 1.677" X 5.313" X 14" AND ARE CONSTRUCTED FROM 14 GAUGE (0.072") COLD-ROLLED STEEL. THE DOOR CLOSER REINFORCEMENTS ARE 1.677" X 6" X 18" AND ARE CONSTRUCTED FROM 12 GAUGE (0.101") COLD-ROLLED STEEL. THE DOOR INACTIVE LEAF ASTRAGAL IS 1.70" X 83.125" AND IS CONSTRUCTED FROM 14 GAUGE (0.072") COLD-ROLLED STEEL. THE DOOR DEAD LOCK REINFORCEMENTS ARE 3" X 3" AND ARE CONSTRUCTED FROM 16 GAUGE (0.053") FORMED STEEL. THE DOOR CYLINDRICAL LOCK REINFORCEMENTS ARE 3" X 2.5" AND ARE CONSTRUCTED FROM 16 GAUGE (0.053") FORMED STEEL. THE DOOR SURFACE BOLTS ARE ROCKWOOD 585 SURFACE BOLTS LOCATED AT THE TOP AND BOTTOM MEETING EDGE CORNER OF THE INACTIVE LEAF. THE DOOR CUT-OUT REINFORCEMENTS RUN THE PERIMETER OF THE DOOR CUT-OUT AND ARE 1.677" X 0.62" AND ARE CONSTRUCTED FROM 12 GAUGE (0.101") COLD-ROLLED STEEL TACK WELDED EVERY 8" TO DOOR SKIN.

FRAME CONSTRUCTION:

THE DOOR FRAMES ARE CONSTRUCTED FROM 16 GAUGE (0.053") COLD-ROLLED STEEL. THE CORNERS ARE MITERED KNOCK DOWN MECHANICALLY FASTENED. THE DOOR FRAME SECTIONS ARE T-SHAPED. THE DOOR FRAME CORNER REINFORCEMENTS ARE KNOCK DOWN WITH CORNER KEY. THE DOOR FRAME HINGES ARE PBB 4.5" X 4.5" X 0.134" FULL MORTISE BUTT-TYPE STANDARD WEIGHT HINGES. THE DOOR FRAME HINGE REINFORCEMENTS ARE 7.50" X 1.625" AND ARE CONSTRUCTED OF 9 GAUGE (0.132") COLD/HOT-ROLLED STEEL. THE DOOR FRAME HEADER REINFORCEMENTS (REQUIRED ON PAIR OPENINGS) ARE 5.6875" X 72" AND ARE CONSTRUCTED OF 14 GAUGE (0.072") FORMED STEEL OR OPTIONAL 10 GAUGE (0.125") X 1.5" FLAT BAR STOCK. THE DOOR FRAME BASE ANCHORS ARE 1.875" X 1.875" AND ARE CONSTRUCTED OF 16 GAUGE (0.053") FORMED STEEL.

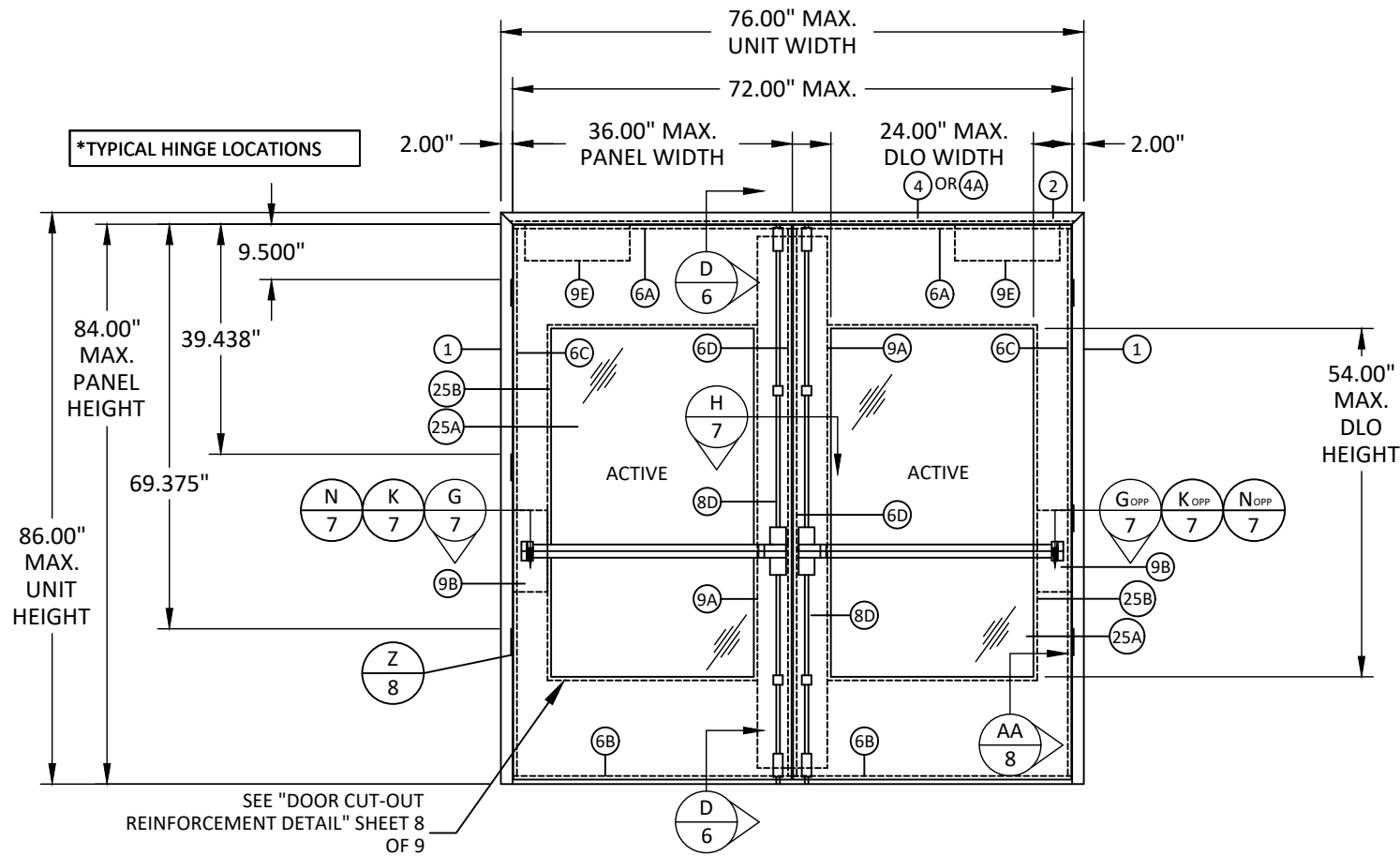
TABLE OF CONTENTS	
SHEET	SHEET DESCRIPTION
1	INSTALLATION & GENERAL NOTES
2	SURFACE VERTICAL ROD ELEVATIONS & DETAILS
3	CYLINDRICAL W/ DEADLOCK ELEVATIONS & DETAILS
4	MORTISE LOCK ELEVATIONS & DETAILS
5	ANCHOR LAYOUT
6	VERTICAL SECTIONS
7	HORIZONTAL SECTIONS
8	CORNER ASSEMBLY, GLAZING DETAIL, & COMPONENTS
9	BILL OF MATERIALS & COMPONENTS

DESIGN PRESSURE RATING FOR GLAZED DOOR ASSEMBLY		
DESIGN PRESSURE ALL SIZES		MISSILE IMPACT RATING
+75/-75 PSF	* WITHOUT WATER INFILTRATION	LARGE & SMALL MISSILE IMPACT RATED

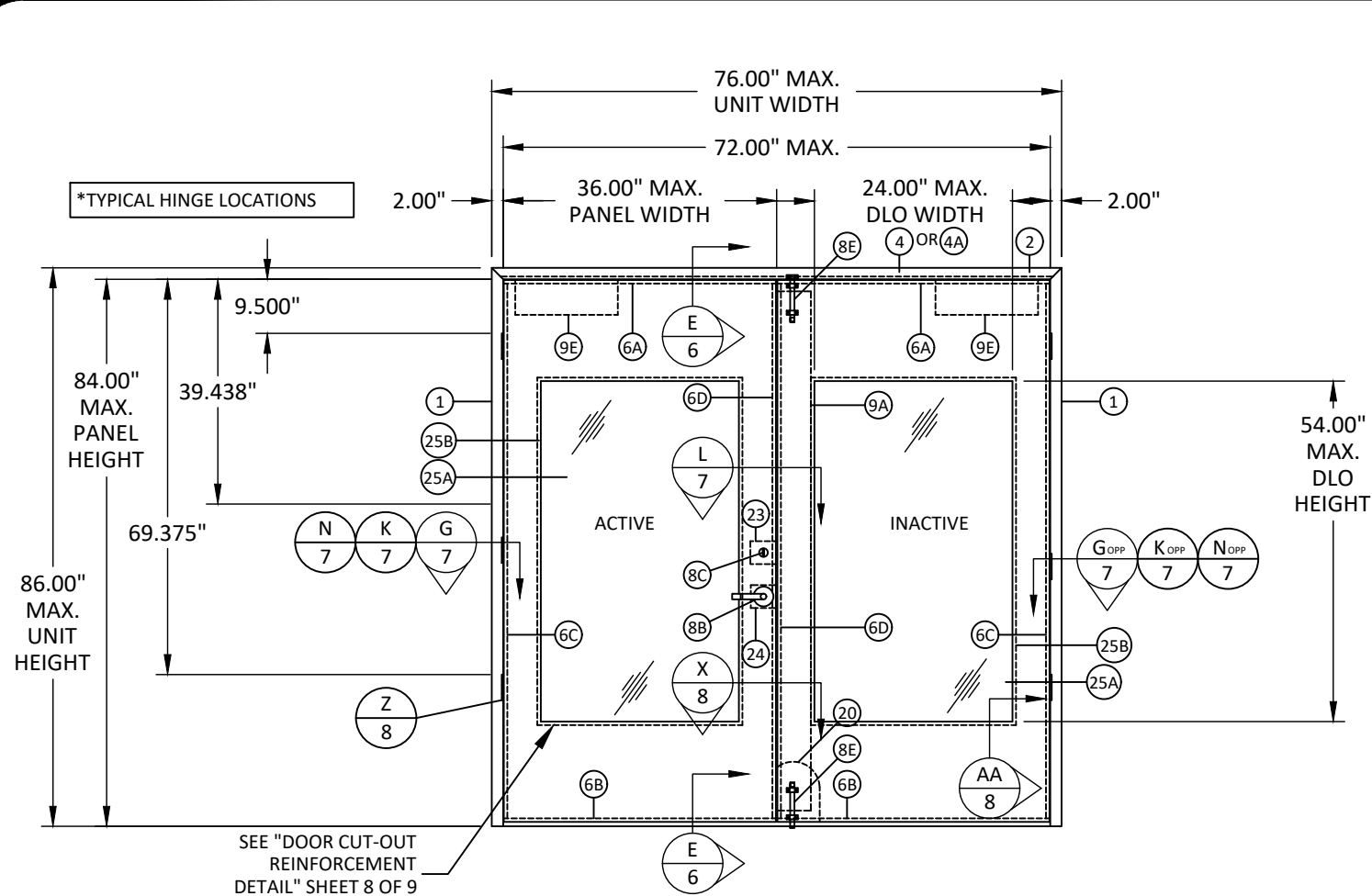
*UNIT SHALL BE INSTALLED AT LOCATION PROTECTED BY OVERHANG SUCH THE OVERHANG RATIO (OH) = OH LENGTH/OH HEIGHT GREATER THAN 1.0 WHERE WATER INFILTRATION IS REQUIRED.

3/30/2022 5:08 PM
s:\projects\republic doors\dl416 rfd submittal - dr551 - dr999 - dr1000 - dr1001 - dr1002\dwgs\2. dl416 outswing glazed door (id 7114)\rfd017 dl416 glazed steel door.dwg

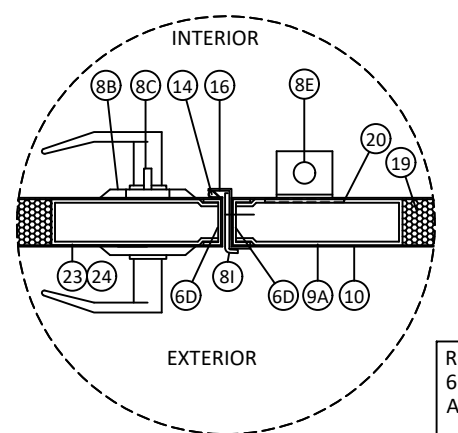
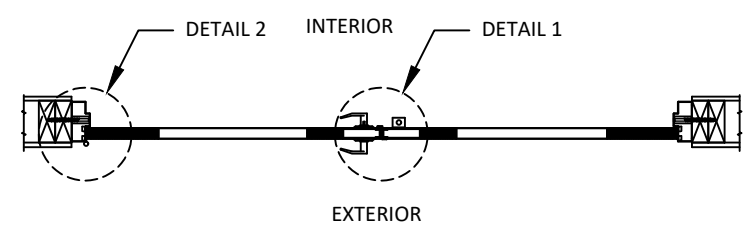
*FASTENERS SHOWN ARE TYPICAL/MINIMUM



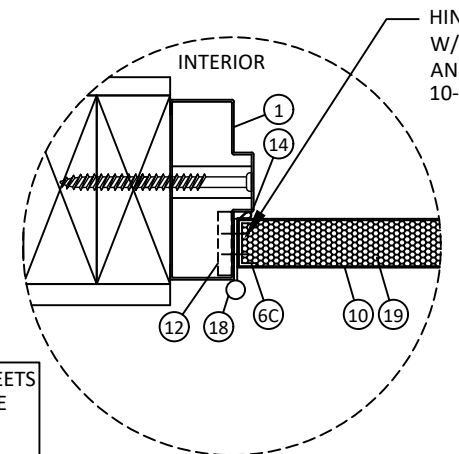
3/30/2022 5:08 PM
s:\projects\republicdoors\dl-22-0116 rfi submittal - dr551 - dr999 - dr1000 - dr1001 - dr1002\dwgs\2. dl416 outswing glazed door (id 7114)\rd\017.dwg



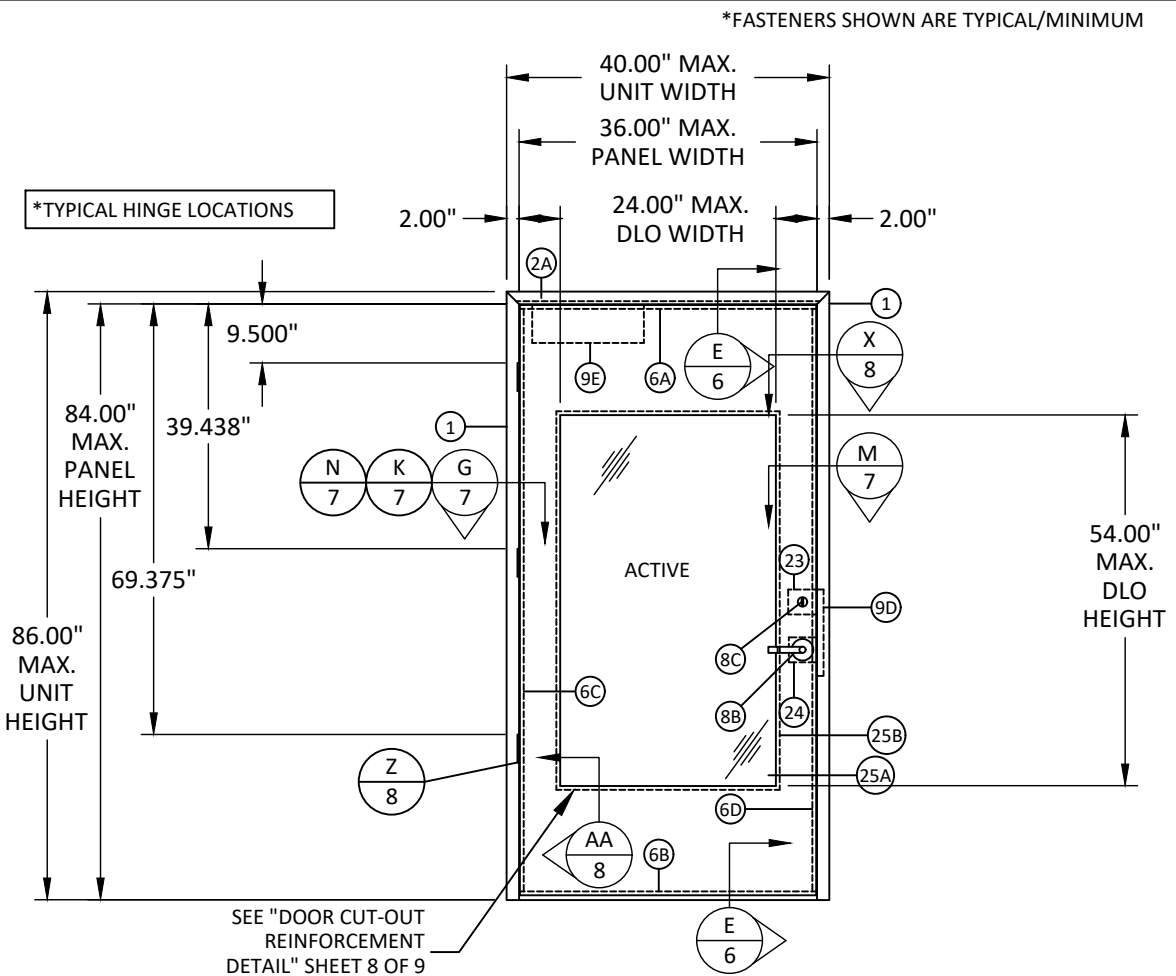
ELEVATION DOUBLE
CYLINDRICAL WITH DEADLOCK
(OUTSWING DOOR - INTERIOR VIEW)



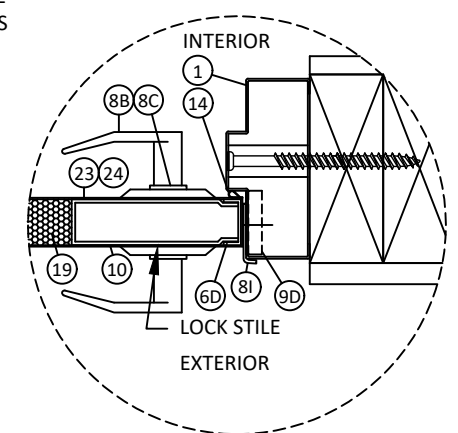
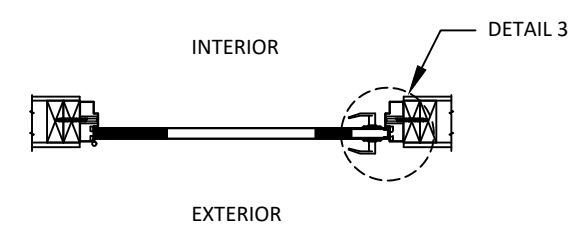
DETAIL 1



DETAIL 2
(SEE SHEET 7)



ELEVATION SINGLE
CYLINDRICAL WITH DEADLOCK
(OUTSWING DOOR - INTERIOR VIEW)



DETAIL 3
(SEE SHEET 7)

REFER TO DETAILS ON SHEETS 6 AND 7 FOR STRIKE PLATE AND FASTENING DETAILS

*FASTENERS SHOWN ARE TYPICAL/MINIMUM



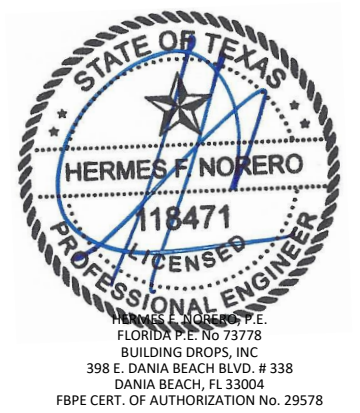
155 REPUBLIC DRIVE
MCKENZIE, TN 38201
PH: (800) 799-3667 FX: (731) 352-2556

TITLE:
DL 416 GLAZED OUTSWING STEEL
DOOR
CYLINDRICAL W/ DEADLOCK
ELEVATIONS & DETAILS

PREPARED BY:
B.D.
BUILDING DROPS
398 E. DANIA BEACH BLVD., STE. 338
DANIA BEACH, FL 33004
PH: (954) 399-8478
FAX: (954) 744-4738
WEB: www.buildingdrops.com

REMARKS	BY	DATE
2018 IBC UPDATE	CA	3.28.22

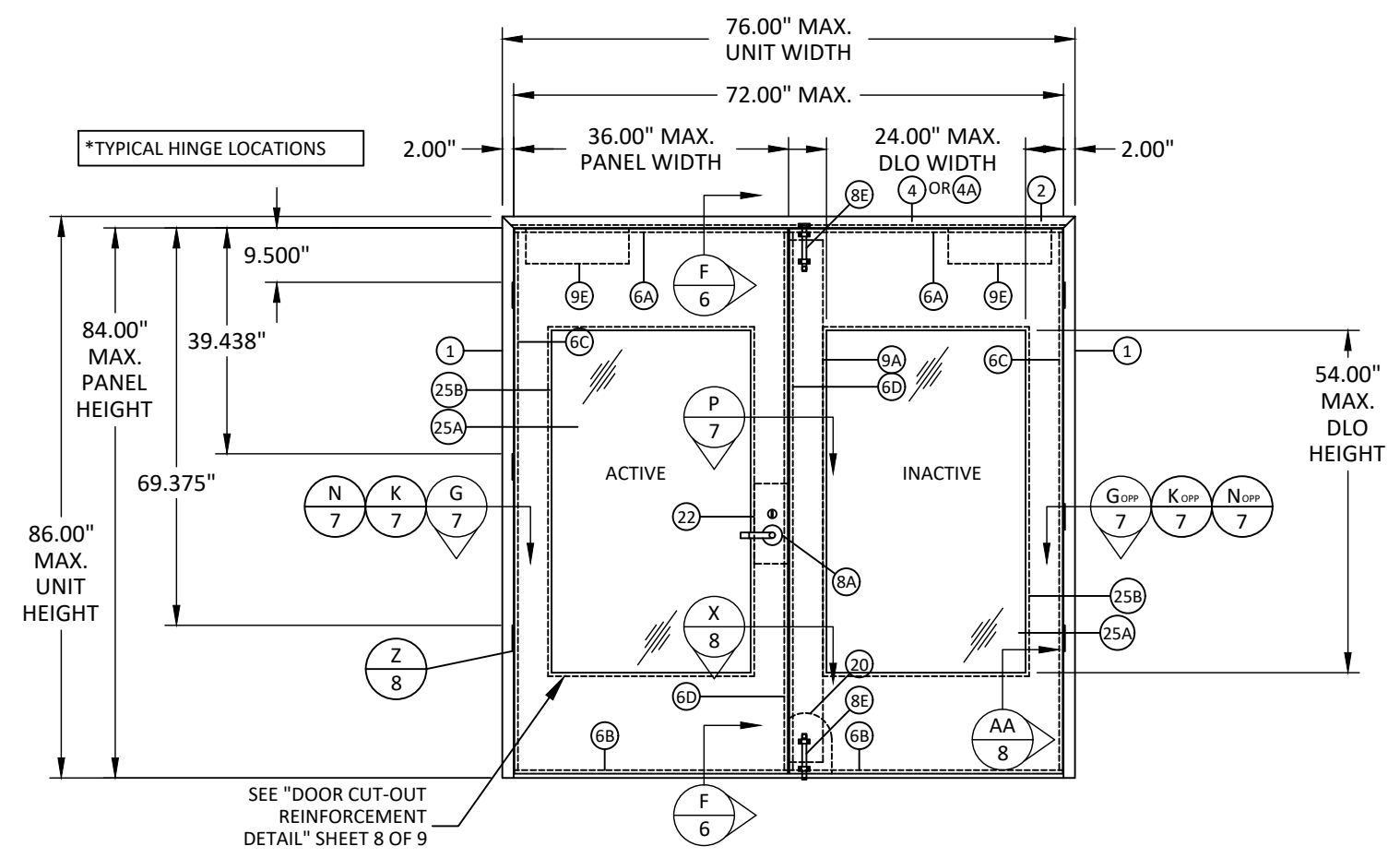
THE INSTALLATION DETAILS DESCRIBED HEREIN ARE GENERIC AND MAY NOT REFLECT ACTUAL CONDITIONS FOR A SPECIFIC SITE. IF SITE CONDITIONS CAUSE INSTALLATION TO DEVIATE FROM THE REQUIREMENTS DETAILED HEREIN, A LICENSED ENGINEER OR ARCHITECT SHALL PREPARE SITE SPECIFIC DOCUMENTS FOR USE WITH THIS DOCUMENT.



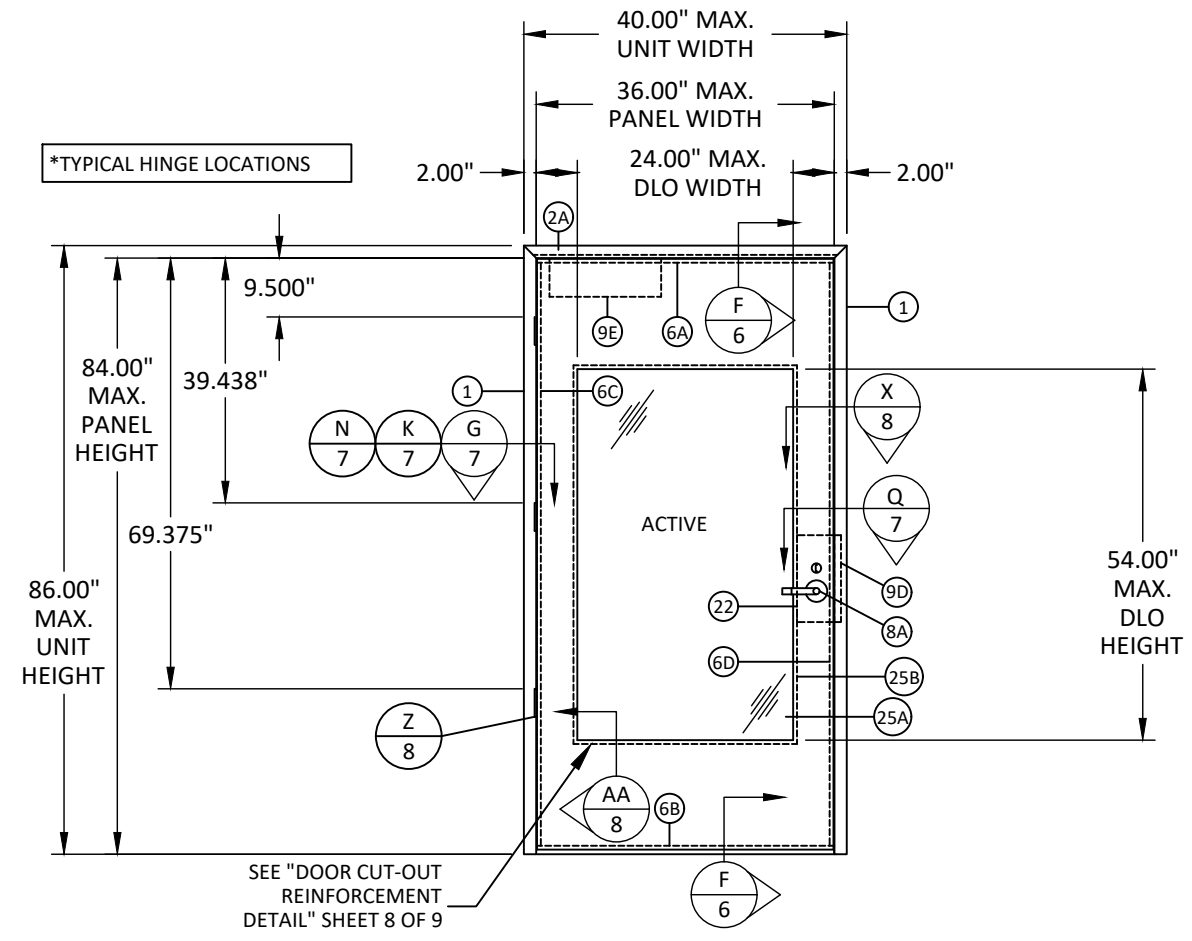
DATE:	03.16.17	
DWG. BY:	JLA	CHK. BY: HFN
SCALE:	NTS	
DWG. #:	RDF017	
SHEET:	3	

3/30/2022 5:08 PM
s:\projects\republic doors\dl-22-0116 rfi submittal - dr551 - dr999 - dr1000 - dr1001 - dr1002\dwg\2. dl416 outswing glazed door (id 7114)\rd\017.dwg

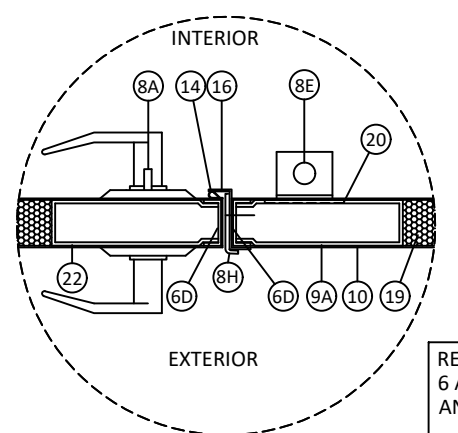
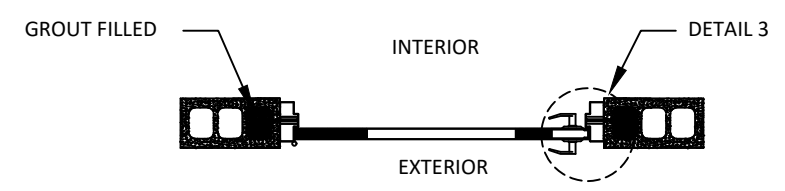
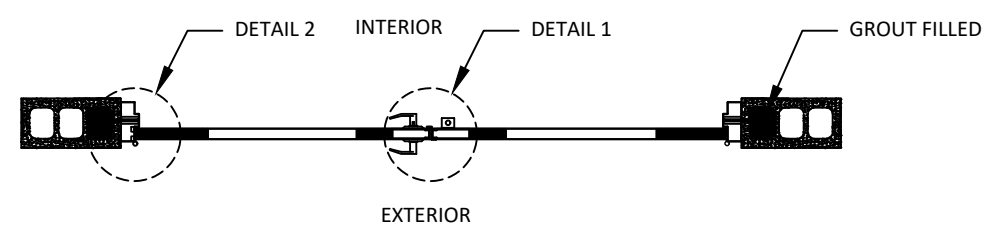
*FASTENERS SHOWN ARE TYPICAL/MINIMUM



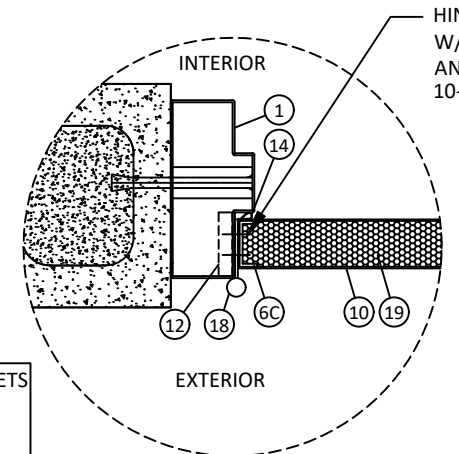
ELEVATION DOUBLE
MORTISE LOCK WITH DEADLOCK
(OUTSWING DOOR - INTERIOR VIEW)



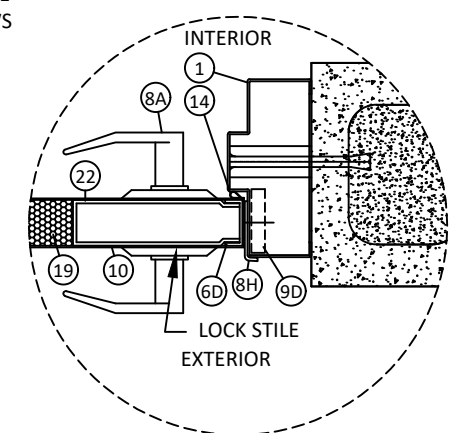
ELEVATION SINGLE
MORTISE LOCK WITH DEADLOCK
(OUTSWING DOOR - INTERIOR VIEW)



REFER TO DETAILS ON SHEETS 6 AND 7 FOR STRIKE PLATE AND FASTENING DETAILS



HINGES SECURED TO FRAME W/ (4) 1/2\" 10-24 MS SCREWS AND TO DOOR W/ (4) 1/2\" X 10-24 MS SCREWS



DETAIL 1

DETAIL 2
(SEE SHEET 7)

DETAIL 3
(SEE SHEET 7)



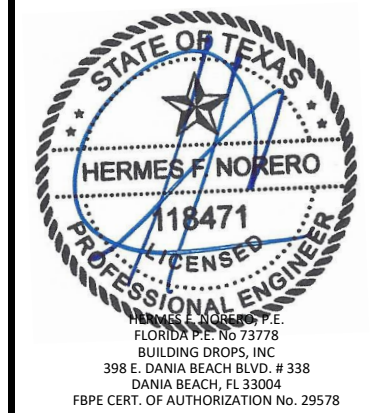
155 REPUBLIC DRIVE
MCKENZIE, TN 38201
PH: (800) 799-3667 FX: (731) 352-2556

TITLE: DL 416 GLAZED OUTSWING STEEL DOOR
MORTISE LOCK ELEVATIONS & DETAILS

PREPARED BY: BUILDING DROPS, INC.
398 E. DANIA BEACH BLVD., STE. 338
DANIA BEACH, FL 33004
PH: (954) 399-8478
FAX: (954) 744-4738
WEB: www.buildingdrops.com

REMARKS	BY	DATE
2018 IBC UPDATE	CA	3.28.22

THE INSTALLATION DETAILS DESCRIBED HEREIN ARE GENERIC AND MAY NOT REFLECT ACTUAL CONDITIONS FOR A SPECIFIC SITE. IF SITE CONDITIONS CAUSE INSTALLATION TO DEVIATE FROM THE REQUIREMENTS DETAILED HEREIN, A LICENSED ENGINEER OR ARCHITECT SHALL PREPARE SITE SPECIFIC DOCUMENTS FOR USE WITH THIS DOCUMENT.



DATE: 03.16.17

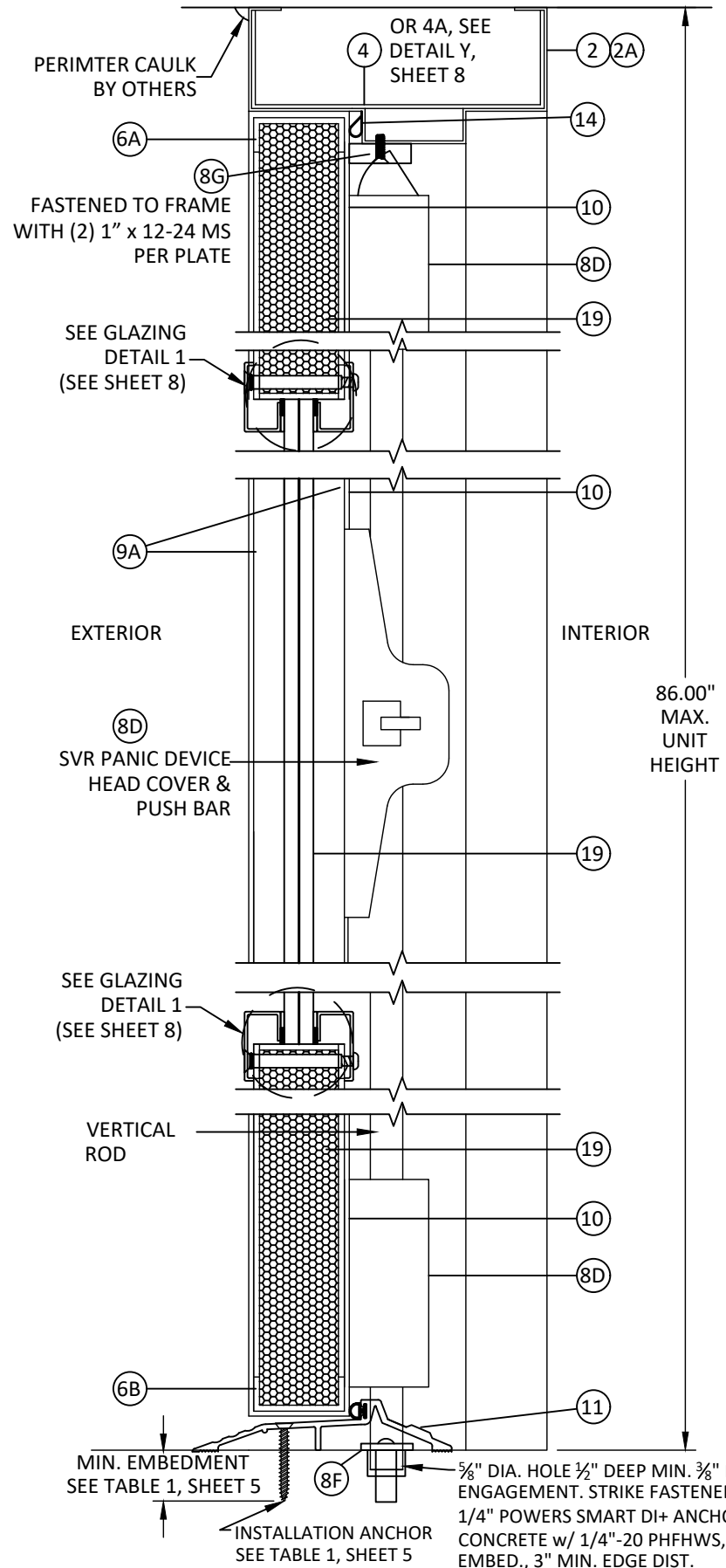
DWG. BY: JLA	CHK. BY: HFN
--------------	--------------

SCALE: NTS

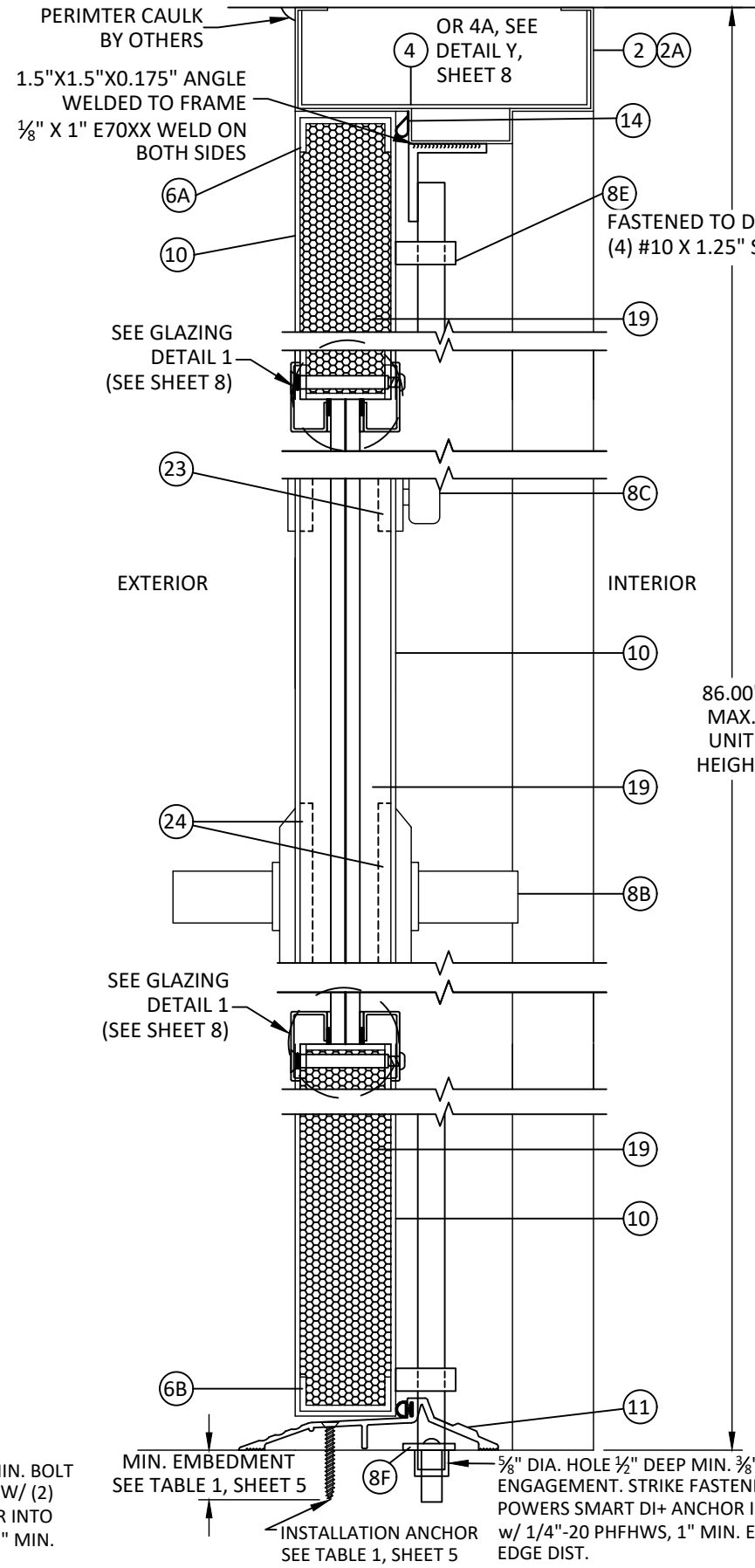
DWG. #: RDF017

3/30/2022 5:08 PM
s:\projects\republic doors\dl16 outwing glazed door (id 7114)\rd\017 dl16 glazed steel door.dwg

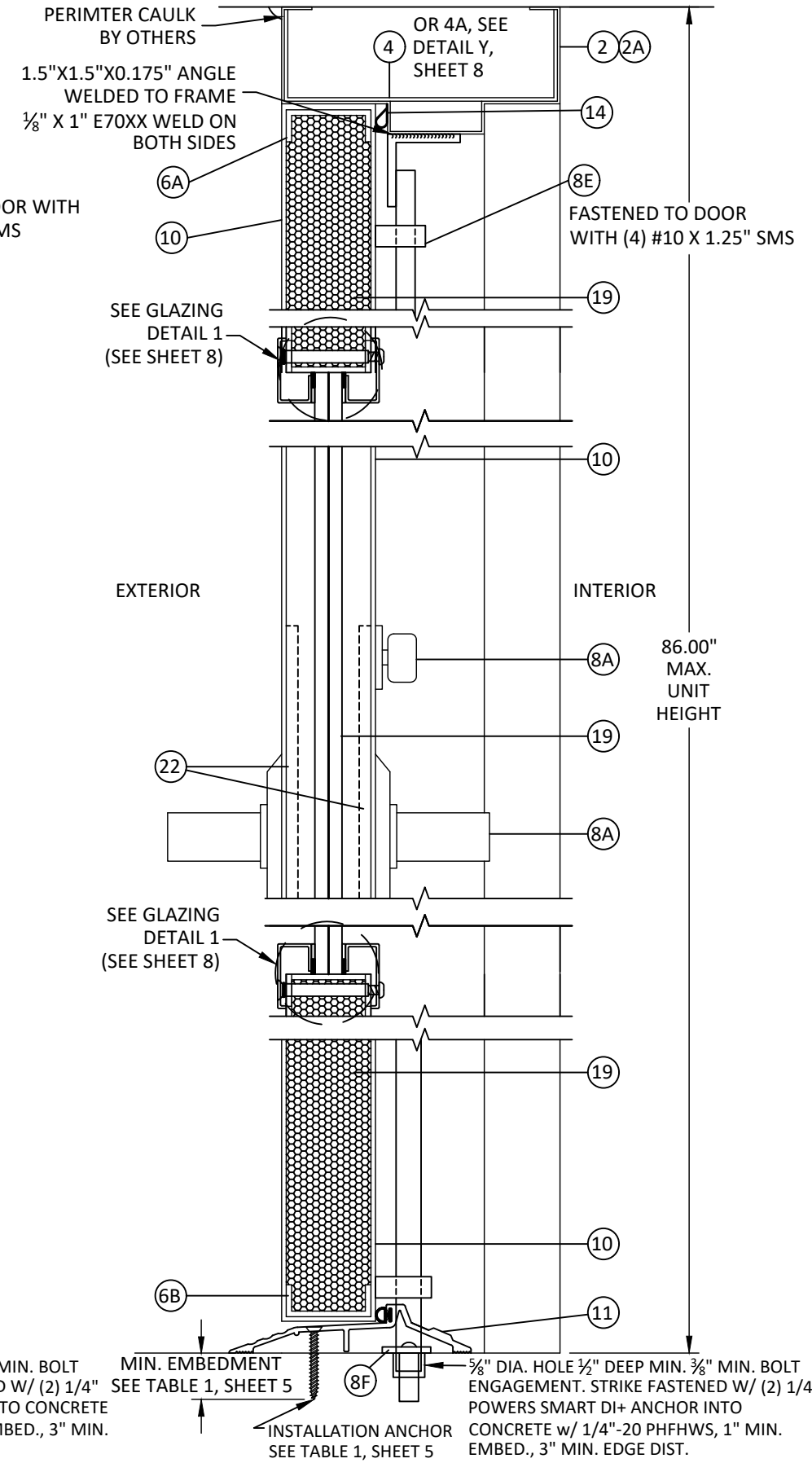
*FASTENERS SHOWN ARE TYPICAL/MINIMUM



D
6 **VERTICAL SECTION**
DORMA SURFACE VERTICAL ROD W/ PANIC EXIT



E
6 **VERTICAL SECTION**
CYLINDRICAL LOCK WITH DEADLOCK



F
6 **VERTICAL SECTION**
MORTISE LOCK WITH DEADLOCK

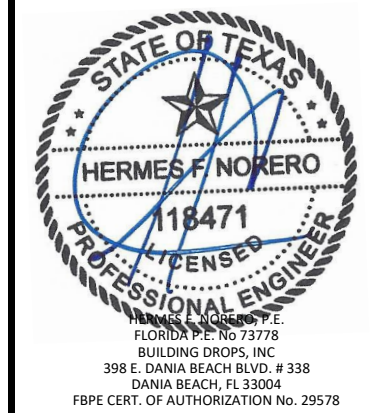


155 REPUBLIC DRIVE
MCKENZIE, TN 38201
PH: (800) 799-3667 FX: (731) 352-2556

TITLE: DL 416 GLAZED OUTSWING STEEL DOOR VERTICAL SECTIONS
PREPARED BY: BUILDING DROPS, INC.
398 E. DANIA BEACH BLVD., STE. 338
DANIA BEACH, FL 33004
PH: (954) 399-8478
FAX: (954) 744-4738
WEB: www.buildingdrops.com

REMARKS	BY	DATE
2018 IBC UPDATE	CA	3.28.22

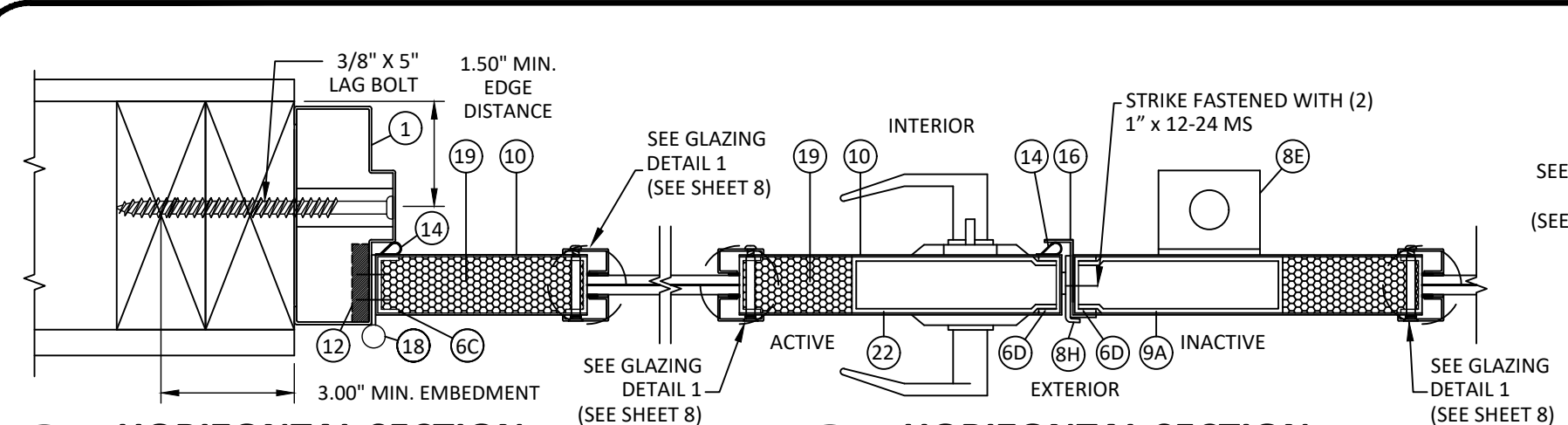
THE INSTALLATION DETAILS DESCRIBED HEREIN ARE GENERIC AND MAY NOT REFLECT ACTUAL CONDITIONS FOR A SPECIFIC SITE. IF SITE CONDITIONS CAUSE INSTALLATION TO DEVIATE FROM THE REQUIREMENTS DETAILED HEREIN, A LICENSED ENGINEER OR ARCHITECT SHALL PREPARE SITE SPECIFIC DOCUMENTS FOR USE WITH THIS DOCUMENT.



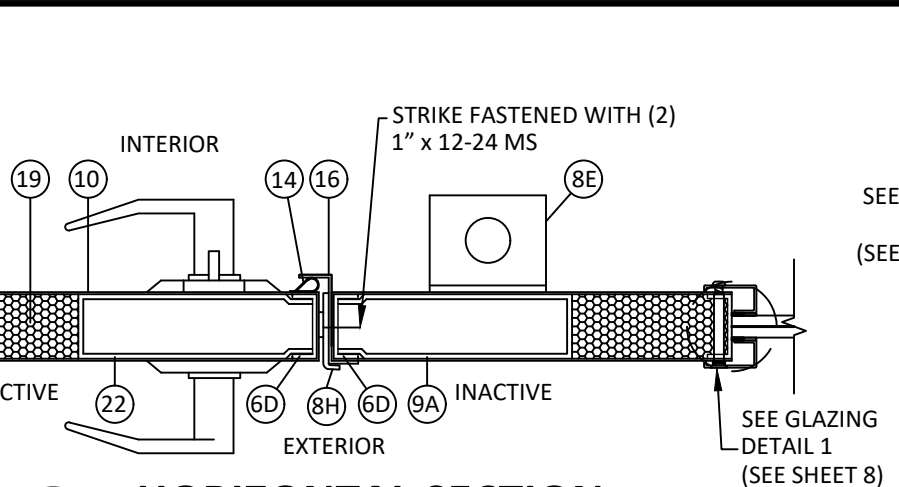
DATE:	03.16.17
DWG. BY:	JLA
CHK. BY:	HFN
SCALE:	NTS
DWG. #:	RDF017

SHEET: 6 OF 9

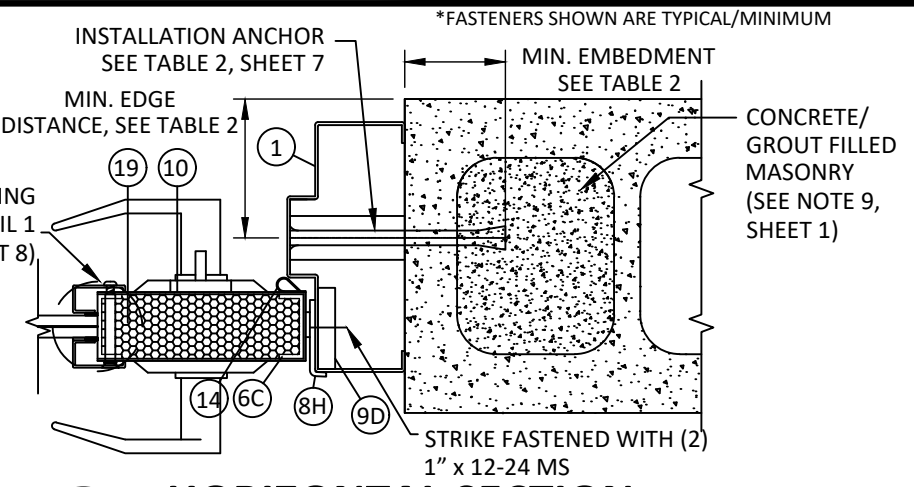
s:\projects\republic doors\dl-22-0116 rfd\submittal - dr551 - dr999 - dr1000 - dr1001 - dr1002\dwg\2 - dl416 outswing glazed door (d7114)\rfd017 dl416 glazed steel door.dwg
 3/30/2022 5:08 PM



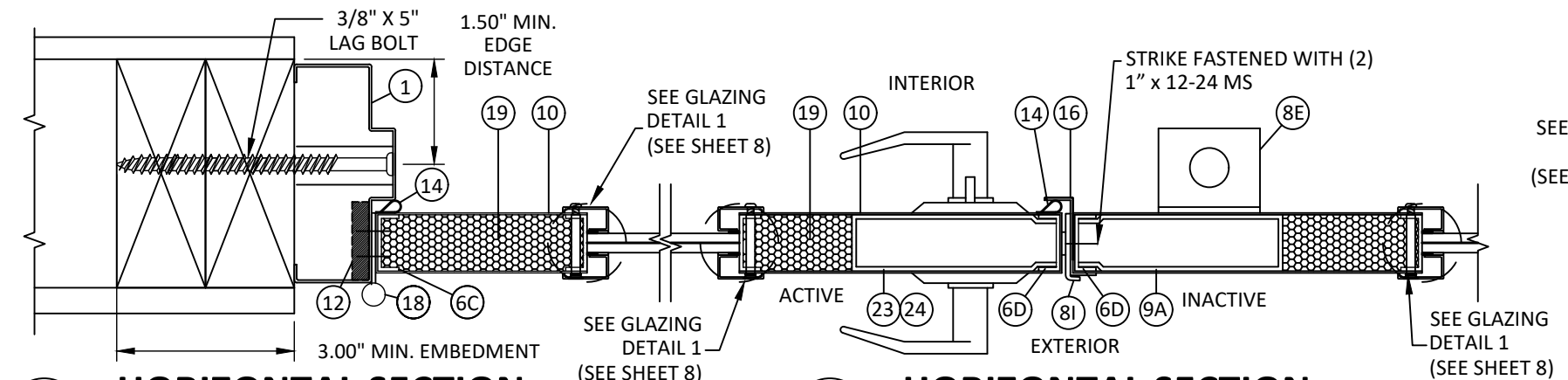
N7 HORIZONTAL SECTION
3/8" X 6" LAG BOLT WITH PIPE AND STRAP HINGE JAMB - 2X WOOD FRAME



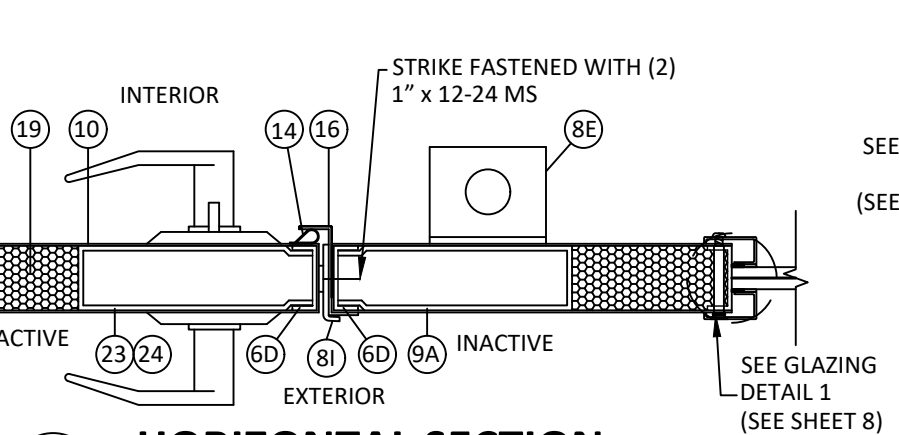
P7 HORIZONTAL SECTION
MORTISE LOCK WITH DEADLOCK



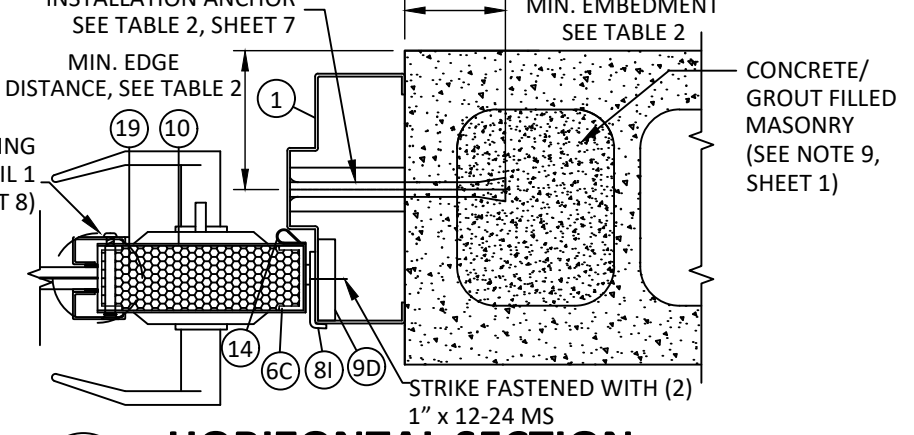
Q7 HORIZONTAL SECTION
EXPANSION BOLT WITH PIPE AND STRAP LOCK JAMB - CONCRETE/MASONRY



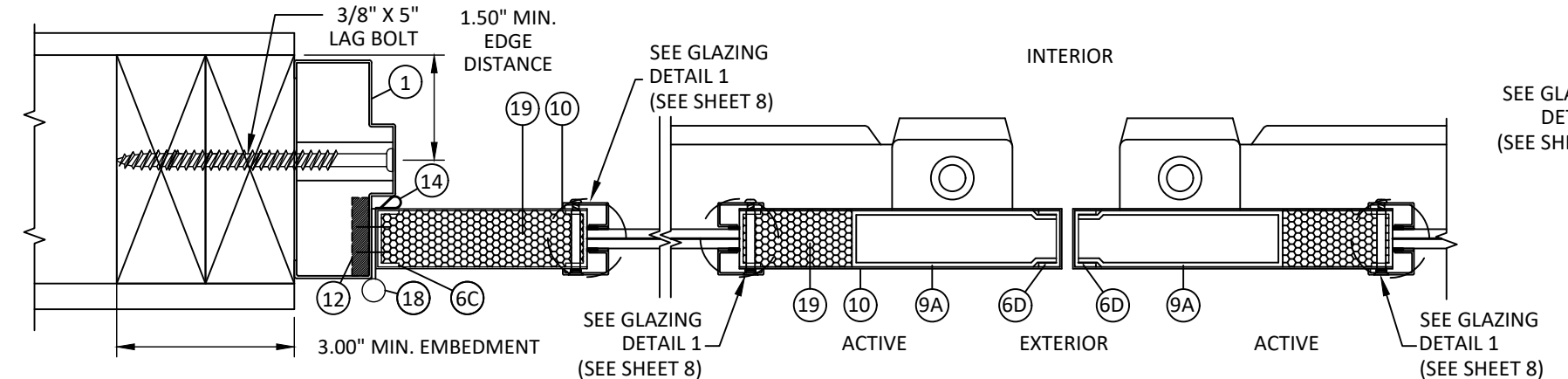
K7 HORIZONTAL SECTION
3/8" X 6" LAG BOLT WITH PIPE AND STRAP HINGE JAMB - 2X WOOD FRAME



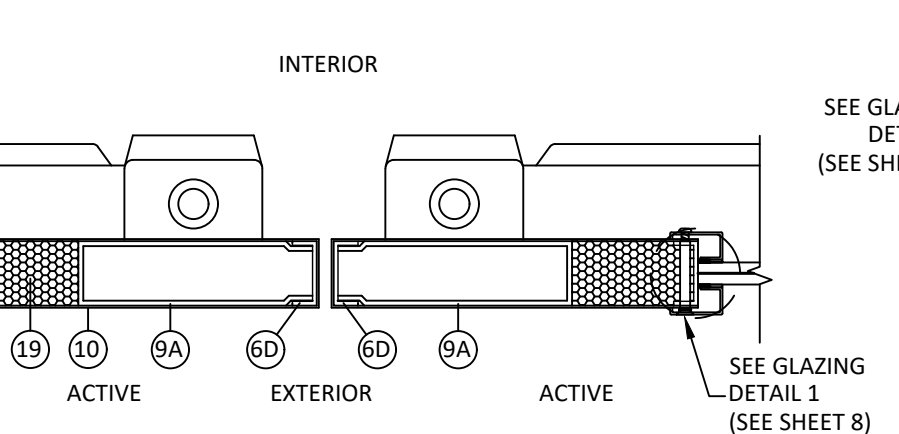
L7 HORIZONTAL SECTION
CYLINDRICAL LOCK WITH DEADLOCK



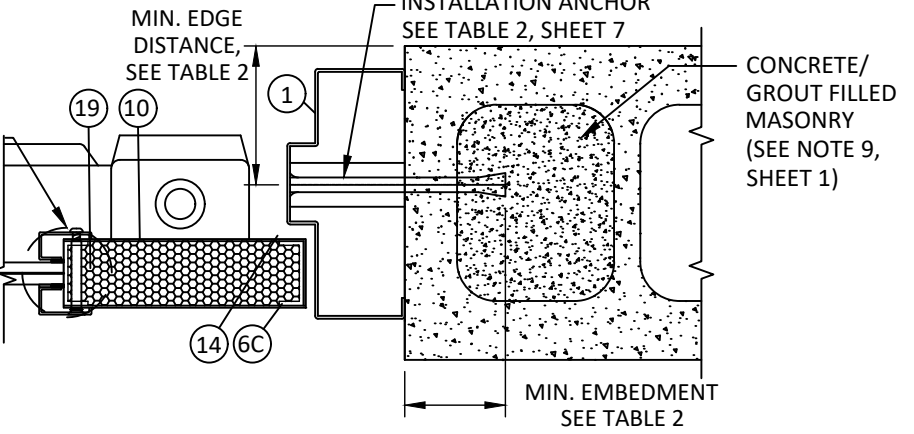
M7 HORIZONTAL SECTION
EXPANSION BOLT WITH PIPE AND STRAP LOCK JAMB - CONCRETE/MASONRY



G7 HORIZONTAL SECTION
3/8" X 6" LAG BOLT WITH PIPE AND STRAP HINGE JAMB - 2X WOOD FRAME



H7 HORIZONTAL SECTION
DORMA SURFACE VERTICAL ROD W/ PANIC



J7 HORIZONTAL SECTION
EXPANSION BOLT WITH PIPE AND STRAP LOCK JAMB - CONCRETE/MASONRY

TABLE 2: CONCRETE ANCHORS AT JAMBS

Anchor	Concrete Min. 3000 psi		CMU Min. 2000 Psi	
	Embedment (in)	Min. Edge Dist. (in)	Embedment (in)	Min. Edge Dist. (in)
3/8" ITW/Redhead Dynabolt	1.5	2.25	1.875	2.25
3/8" FH Powers Power-Bolt	2	2.5	1.875	2.5
3/8" FH Powers Lok Bolt AS	1.625	2.5	1.25	2.5
3/8" Hilti HLC-FPH Sleeve Anchor	1.25	2.25	1.25	2.5



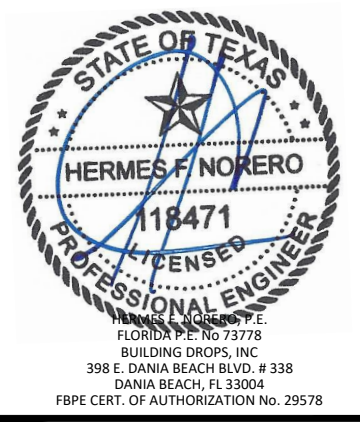
155 REPUBLIC DRIVE
MCKENZIE, TN 38201
PH: (800) 799-3667 FX: (731) 352-2556

TITLE: DL 416 GLAZED OUTSWING STEEL DOOR HORIZONTAL SECTIONS

PREPARED BY: BUILDING DROPS, INC.
398 E. DANIA BEACH BLVD., STE. 338
DANIA BEACH, FL 33004
PH: (954) 399-8478
FAX: (954) 744-4738
WEB: www.buildingdrops.com

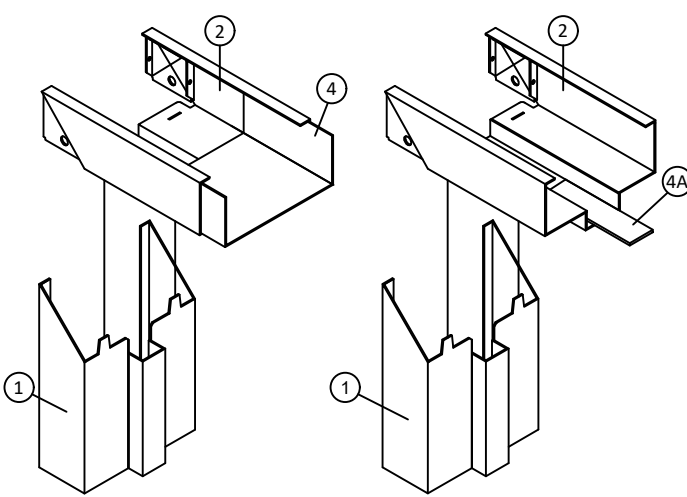
REMARKS	BY	DATE
2018 IBC UPDATE	CA	3.28.22

THE INSTALLATION DETAILS DESCRIBED HEREIN ARE GENERIC AND MAY NOT REFLECT ACTUAL CONDITIONS FOR A SPECIFIC SITE. IF SITE CONDITIONS CAUSE INSTALLATION TO DEVIATE FROM THE REQUIREMENTS DETAILED HEREIN, A LICENSED ENGINEER OR ARCHITECT SHALL PREPARE SITE SPECIFIC DOCUMENTS FOR USE WITH THIS DOCUMENT.



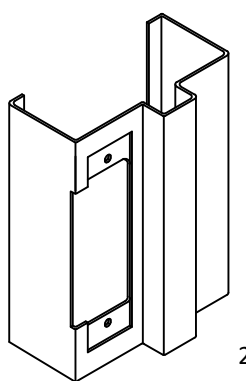
DATE:	03.16.17	
DWG. BY:	JLA	CHK. BY: HFN
SCALE:	NTS	
DWG. #:	RDF017	
SHEET:	7 OF 9	

3/30/2022 5:08 PM
s:\projects\republic doors\dl16 outswing glazed door (id 7114)\rd\017 dl16 glazed steel door.dwg

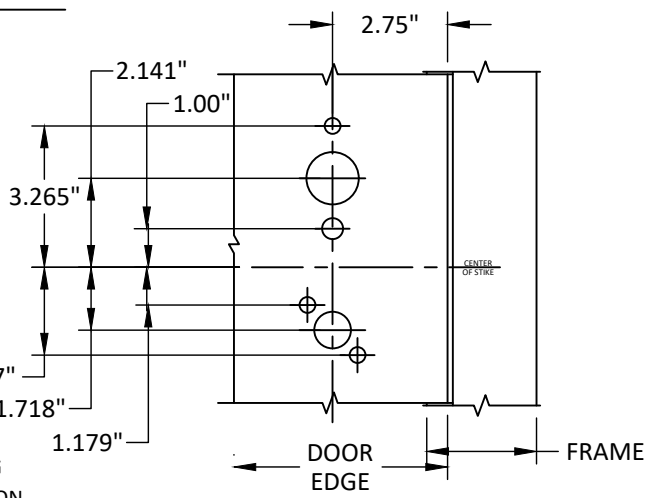


16 GAGE 5 3/4" DEPTH FRAME WITH MITERED CORNER CONSTRUCTION WITH FOUR INTEGRAL TABS WHICH INTERLOCK THE JAMBS TO THE HEAD, WITH REINFORCEMENT, PART # 4 OR 4A

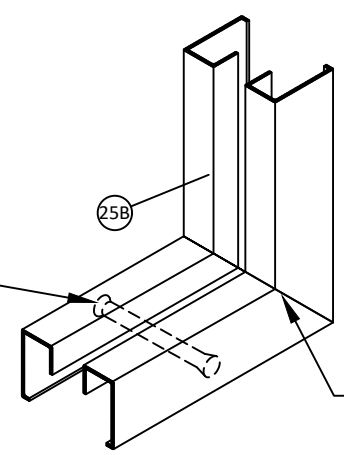
DETAIL Y



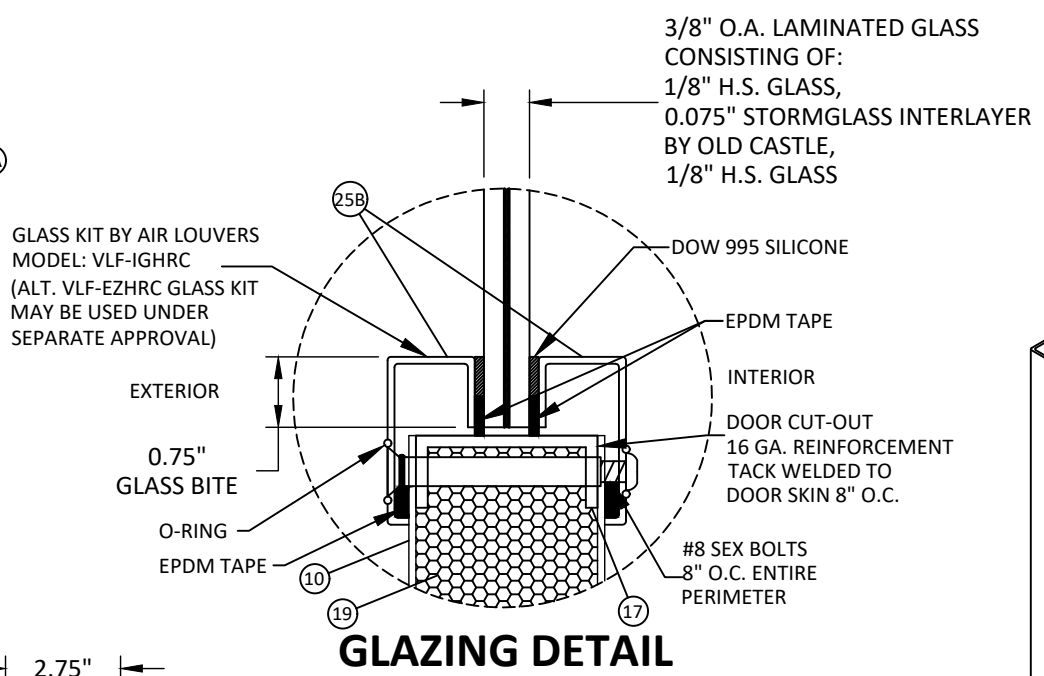
14 GAUGE STEEL REINFORCING PLATE AT LOCK STRIKE LOCATION



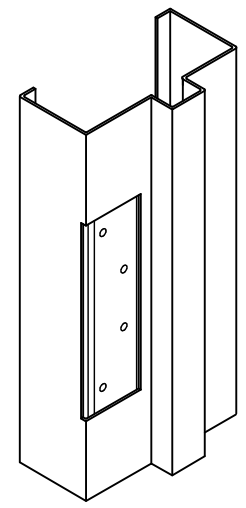
DETAIL X
LOCK REINFORCEMENT



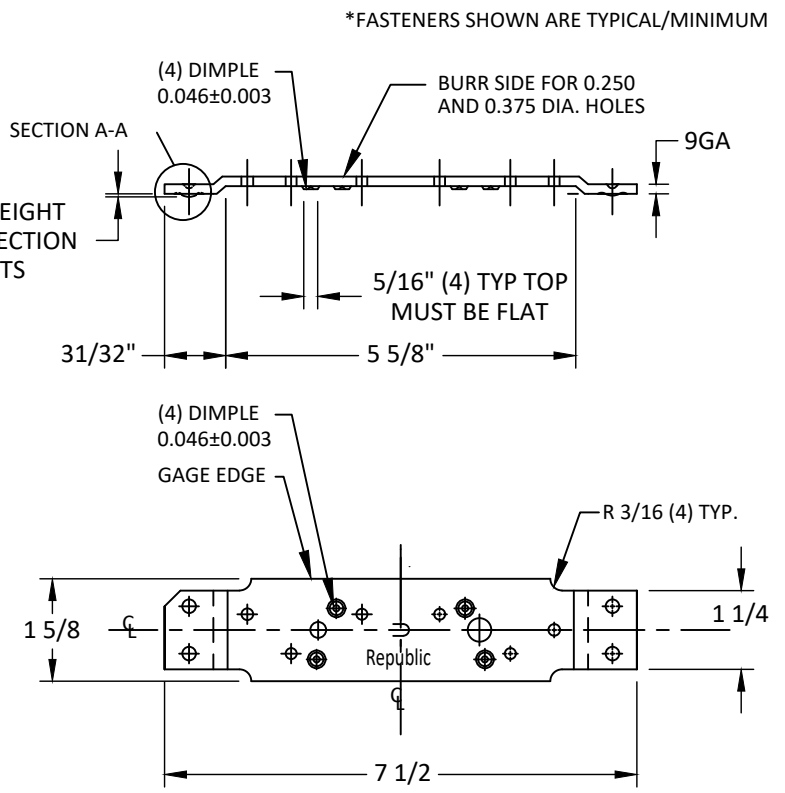
DETAIL AA
LITE KIT CORNER CONSTRUCTION



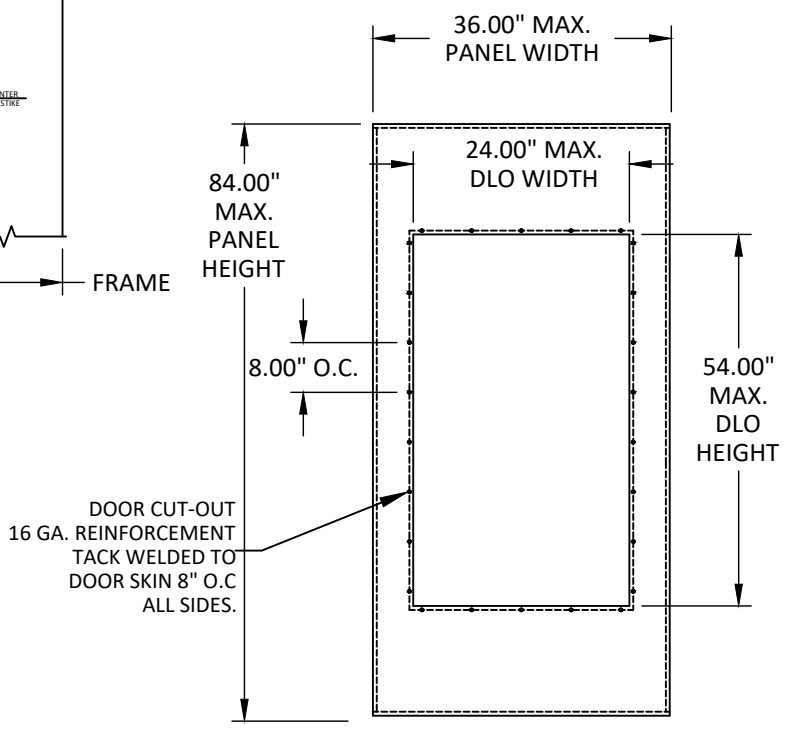
GLAZING DETAIL



DETAIL Z
HINGE REINFORCEMENT

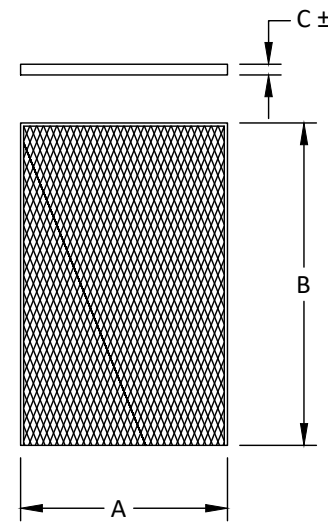


*FASTENERS SHOWN ARE TYPICAL/MINIMUM



DOOR CUT-OUT REINFORCEMENT DETAIL

16 GA. (0.053") 1.667" X 0.62" STEEL CHANNEL WELDED TO DOOR SKIN FULL PERIMETER



HONEYCOMB CORE			
Part Number	A	B	C
3993000	2'0 TO 2'6	CUT TO LENGTH	1.73
3993001	2'8 TO 3'0	CUT TO LENGTH	1.73

1. General
Type 99-0-3/4 Honeycomb core is fabricated of Kraft paper and is bonded together to form 3/4" wide hexagonal cells when expanded. Core is to be Non-impregnated, not expanded with cut edges, 1.730" ± .010 thick.

2. Honeycomb Core Data

Base Material, lbs./3000 sq. ft. sheet stock	99
Resin Content	0
Moisture Content	6-8%
Cell Size	3/4"
Density lbs./cubic ft. expanded	1.56
Crushing lbs./sq. in.	48

HONEYCOMB CORE
POLYSTYRENE CORE OPTIONAL



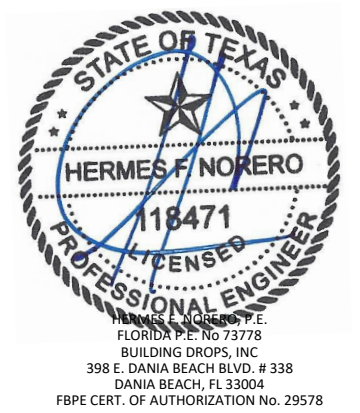
155 REPUBLIC DRIVE
MCKENZIE, TN 38201
PH: (800) 799-3667 FX: (731) 352-2556

TITLE: DL 416 GLAZED OUTSWING STEEL DOOR CORNER ASSEMBLY, GLAZING DETAIL, & COMPONENTS

PREPARED BY: BUILDING DROPS, INC.
398 E. DANIA BEACH BLVD., STE. 338
DANIA BEACH, FL 33004
PH: (954) 399-8478
FAX: (954) 744-4738
WEB: www.buildingdrops.com

REMARKS	BY	DATE
2018 IBC UPDATE	CA	3.28.22

THE INSTALLATION DETAILS DESCRIBED HEREIN ARE GENERIC AND MAY NOT REFLECT ACTUAL CONDITIONS FOR A SPECIFIC SITE. IF SITE CONDITIONS CAUSE INSTALLATION TO DEVIATE FROM THE REQUIREMENTS DETAILED HEREIN, A LICENSED ENGINEER OR ARCHITECT SHALL PREPARE SITE SPECIFIC DOCUMENTS FOR USE WITH THIS DOCUMENT.



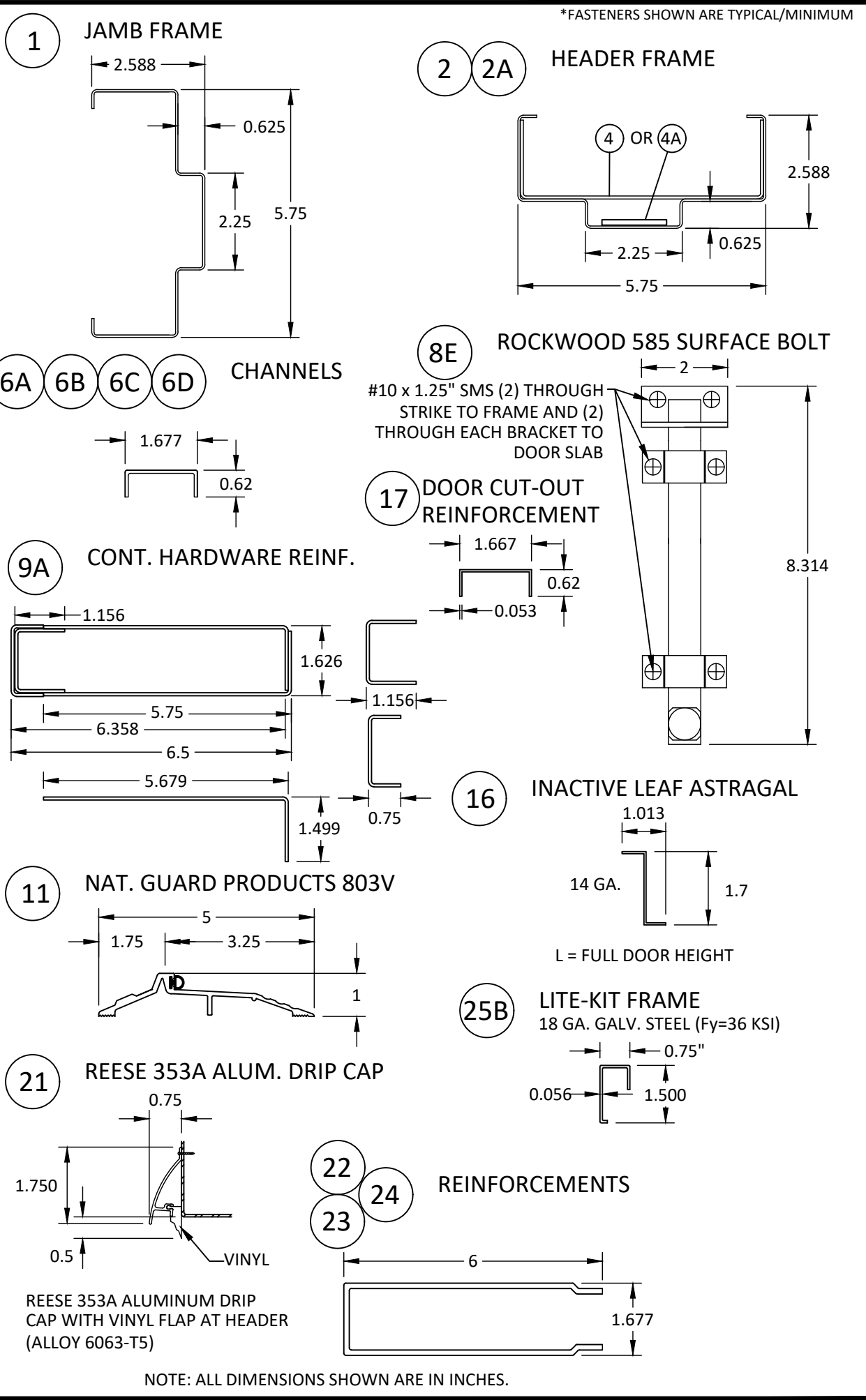
HERMES F. NORERO, P.E.
FLORIDA P.E. No. 73778
BUILDING DROPS, INC.
398 E. DANIA BEACH BLVD. # 338
DANIA BEACH, FL 33004
FBPE CERT. OF AUTHORIZATION No. 29578

DATE:	03.16.17
DWG. BY:	JLA
CHK. BY:	HFN
SCALE:	NTS
DWG. #:	RDF017
SHEET:	8

3/30/2022 5:08 PM
s:\projects\republic doors\17-22-0116 rfd\submital - dr551 - dr999 - dr1000 - dr1001 - dr1002\dwg\2 - dl416 outswing glazed door (id 7114)\rfd\17 dl416 glazed steel door.dwg

BILL OF MATERIALS

ITEM NO.	DESCRIPTION	MATERIAL	MANUFACTURER
1	96" X 5.75" DOUBLE SWING JAMB PAIR OR SINGLE JAMB	0.053" STEEL	REPUBLIC DOOR & FRAMES
2	96" X 5.75" FACE DOUBLE OPENING HEADER	0.053" STEEL	REPUBLIC DOOR & FRAMES
2A	52" X 5.75" SINGLE DOOR HEADER	0.053" STEEL	REPUBLIC DOOR & FRAMES
3	HINGE REINFORCING FRAME	0.132" STEEL	REPUBLIC DOOR & FRAMES
4	HEADER SLEEVE REINFORCEMENT 14 GA. (.072") X 5.6875" X FULL LENGTH HEADER	0.072" STEEL	REPUBLIC DOOR & FRAMES
4A	HEADER FLAT STOCK REINFORCEMENT 10 GA. (.125") X 1.5" X FULL LENGTH HEADER	0.125" STEEL	REPUBLIC DOOR & FRAMES
5	BASE ANCHOR 1.875" X 1.875"	0.053" STEEL	REPUBLIC DOOR & FRAMES
6A	TOP CHANNELS 16 GA. X 1.677" X 0.62" CHANNEL FULL LENGTH DOOR PANEL WIDTH	0.053" STEEL	REPUBLIC DOOR & FRAMES
6B	BOTTOM CHANNELS 16 GA. X 1.677" X 0.62" CHANNEL FULL LENGTH OF DOOR PANEL WIDTH	0.053" STEEL	REPUBLIC DOOR & FRAMES
6C	HINGE CHANNELS 16 GA. X 1.677" X 0.62" CHANNEL FULL DOOR HEIGHT	0.053" STEEL	REPUBLIC DOOR & FRAMES
6D	LOCK CHANNELS 16 GA. X 1.677" X 0.62" CHANNEL FULL DOOR HEIGHT	0.053" STEEL	REPUBLIC DOOR & FRAMES
7C	AIR FILTRATION WEATHERSTRIP	0.053" STEEL	
8A	DORMA ML9953D MORTISE LOCK W/ DEADBOLT	STEEL	DORMA
8B	DORMA CL853 STANDARD LATCH	STEEL	DORMA
8C	DORMA DB660D DEADLOCK	STEEL	DORMA
8D	DORMA 9400 SURFACE VERTICAL ROD W/ PANIC DEVICE	STEEL	DORMA
8E	ROCKWOOD 585 SURFACE BOLTS	STEEL	ROCKWOOD
8F	DORMA 340 STRIKE PLATE	STEEL	DORMA
8G	DORMA 426 STRIKE PLATE	STEEL	DORMA
8H	4 7/8" ASA STRIKE	STEEL	DORMA
8I	STRIKE 5001 118	STEEL	DORMA
9A	CONTINUOUS HARDWARE REINF. 12 GA. (0.101") 1.677" X 6" X (DOOR HEIGHT - 11")	0.101" STEEL	REPUBLIC DOOR & FRAMES
9B	EXIT DEVICE REINFORCEMENT 14 GA. (0.072") 1.677" X 5.313" X 14"	0.072" STEEL	REPUBLIC DOOR & FRAMES
9D	FRAME STRIKE REINFORCEMENT PLATE 14 GA. ANSI/ASA 4.375	0.072" STEEL	REPUBLIC DOOR & FRAMES
9E	CLOSER REINFORCEMENT 12 GA. (0.101") X 1.677" X 6" X 18"	0.072" STEEL	REPUBLIC DOOR & FRAMES
10	DOOR SKINS FY=50.09 KSI MIN.	0.053" STEEL	REPUBLIC DOOR & FRAMES
11	NATIONAL GUARD PRODUCTS 803V	ALUMINUM	NATIONAL GUARD PRODUCTS
12	DOOR HINGE REINFORCEMENT 9 GA. (0.132") X 7.5" X 1.625"	0.132" STEEL	REPUBLIC DOOR & FRAMES
13	ANCHORS (SEE TABLE 1, SHEET 5 & TABLE 2, SHEET 7)	VARIES	VARIES
14	NATIONAL GUARD PROD. 5050B-20	VINYL BULB	NATIONAL GUARD PRODUCTS
15	ALL PURPOSE SILICONE CAULK	SILICONE	
16	INACTIVE LEAF ASTRAGAL 14 GA. (0.072") X 1.7" X FULL DOOR HEIGHT	0.072" STEEL	REPUBLIC DOOR & FRAMES
17	CUT OUT REINFORCEMENT	0.053" STEEL	REPUBLIC DOOR & FRAMES
18	PBB - STANDARD WT. 4 1/2" X 4 1/2" X .134" THICK HINGES		PBB
19	HONEYCOMB CORE TYPE 99-0-3/4 (POLY. OPTIONAL)	KRAFT PAPER	REPUBLIC DOOR & FRAMES
20	SURFACE BOLT ANGLE REINFORCEMENT 7 GAUGE X 0.175" X 1.5" X 1.5"	0.175" STEEL	ROCKWOOD
21	REESE 353A ALUMINUM DRIP CAP	ALLOY 6063-T5	REESE
22	MORTISE LOCK REINFORCEMENT 14 GAUGE X 1.677" X 5.313" X 14"	0.072" STEEL	REPUBLIC DOOR & FRAMES
23	DEAD LOCK REINFORCEMENT 16 GAUGE X 3" X 3"	0.053" STEEL	REPUBLIC DOOR & FRAMES
24	CYLINDRICAL LOCK REINFORCEMENT 16 GAUGE X 3" X 2.5"	0.053" STEEL	REPUBLIC DOOR & FRAMES
25A	3/8" STORMGLASS	GLASS	OLD CASTLE GLASS
25B	AIR LOUVERS VLF-IGHRC (VLF-EZHRC OPTIONAL)	GLASS KIT	AIR LOUVER



*FASTENERS SHOWN ARE TYPICAL/MINIMUM



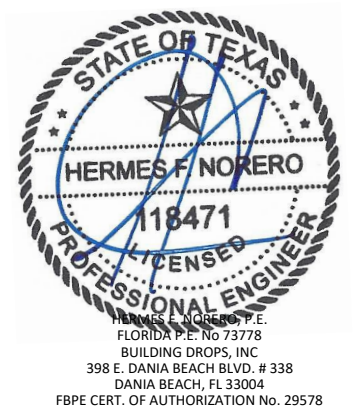
155 REPUBLIC DRIVE
MCKENZIE, TN 38201
PH: (800) 799-3667 FX: (731) 352-2556

TITLE: DL 416 GLAZED OUTSWING STEEL DOOR
BILL OF MATERIALS & COMPONENTS

PREPARED BY: BUILDING DROPS, INC.
398 E. DANIA BEACH BLVD., STE. 338
DANIA BEACH, FL 33004
PH: (954) 399-8478
FAX: (954) 744-4738
WEB: www.buildingdrops.com

REMARKS	BY	DATE
2018 IBC UPDATE	CA	3.28.22

THE INSTALLATION DETAILS DESCRIBED HEREIN ARE GENERIC AND MAY NOT REFLECT ACTUAL CONDITIONS FOR A SPECIFIC SITE. IF SITE CONDITIONS CAUSE INSTALLATION TO DEVIATE FROM THE REQUIREMENTS DETAILED HEREIN, A LICENSED ENGINEER OR ARCHITECT SHALL PREPARE SITE SPECIFIC DOCUMENTS FOR USE WITH THIS DOCUMENT.



DATE:	03.16.17	
DWG. BY:	JLA	CHK. BY: HFN
SCALE:	NTS	
DWG. #:	RDF017	
SHEET:	9 OF 9	