

# REPUBLIC DOORS AND FRAMES

## DL418 STEEL FLUSH DOOR



155 REPUBLIC DRIVE  
MCKENZIE, TN 38201  
PH: (800) 799-3667 FX: (731) 352-2556

### INSTALLATION NOTES:

- ONE (1) INSTALLATION ANCHOR IS REQUIRED AT EACH ANCHOR LOCATION SHOWN, UNLESS OTHERWISE STATED.
- THE NUMBER OF INSTALLATION ANCHORS DEPICTED IS THE MINIMUM NUMBER OF ANCHORS TO BE USED FOR PRODUCT INSTALLATION.
- INSTALL INDIVIDUAL INSTALLATION ANCHORS WITHIN A TOLERANCE OF ±1/16 INCH OF THE DEPICTED LOCATION IN THE ANCHOR LAYOUT DETAIL (I.E., WITHOUT CONSIDERATION OF TOLERANCES). TOLERANCES ARE NOT CUMULATIVE FROM ONE INSTALLATION ANCHOR TO THE NEXT.
- FOR INSTALLATION INFORMATION AND ANCHOR LAYOUTS ON JAMBS AND SILL, REFER TO SHEET 6.
- MINIMUM EMBEDMENT AND EDGE DISTANCE EXCLUDE WALL FINISHES, INCLUDING BUT NOT LIMITED TO STUCCO, FOAM, BRICK VENEER, AND SIDING.
- INSTALLATION ANCHORS AND ASSOCIATED HARDWARE MUST BE MADE OF CORROSION RESISTANT MATERIAL OR HAVE A CORROSION RESISTANT COATING.
- FOR GROUT FILLED BLOCK, DO NOT INSTALL INSTALLATION ANCHORS INTO MORTAR JOINTS. EDGE DISTANCE IS MEASURED FROM FREE EDGE OF BLOCK OR EDGE OF MORTAR JOINT INTO FACE SHELL OF BLOCK.
- INSTALLATION ANCHORS SHALL BE INSTALLED IN ACCORDANCE WITH ANCHOR MANUFACTURER'S INSTALLATION INSTRUCTIONS, AND ANCHORS SHALL NOT BE USED IN SUBSTRATES WITH STRENGTHS LESS THAN THE MINIMUM STRENGTH SPECIFIED BY THE ANCHOR MANUFACTURER.
- INSTALLATION ANCHOR CAPACITIES FOR PRODUCTS HEREIN ARE BASED ON SUBSTRATE MATERIALS WITH THE FOLLOWING PROPERTIES:
  - WOOD - MINIMUM SPECIFIC GRAVITY OF 0.42.
  - CONCRETE - MINIMUM COMPRESSIVE STRENGTH OF 3000 PSI.
  - GROUT-FILLED CMU - UNIT STRENGTH CONFORMS TO ASTM C-90 & GROUT CONFORMS TO ASTM C 476. GROUT SHALL HAVE MINIMUM COMPRESSIVE STRENGTH OF 2000 PSI.

### GENERAL NOTES:

- THE PRODUCT SHOWN HEREIN IS DESIGNED AND MANUFACTURED TO COMPLY WITH THE 2018 INTERNATIONAL BUILDING CODE (IBC) AND INTERNATIONAL RESIDENTIAL CODE (IRC) AND HAS BEEN EVALUATED ACCORDING TO THE FOLLOWING.
  - TAS 201-94
  - TAS 202-94
  - TAS 203-94
- ADEQUACY OF THE EXISTING STRUCTURAL CONCRETE/MASONRY, 2X AND STEEL STUD FRAMING AS A MAIN WIND FORCE RESISTING SYSTEM CAPABLE OF WITHSTANDING AND TRANSFERRING APPLIED PRODUCT LOADS TO THE FOUNDATION IS THE RESPONSIBILITY OF THE ENGINEER OR ARCHITECT OF RECORD FOR THE PROJECT OF INSTALLATION.
- 1X OR 2X BUCKS (WHEN USED) SHALL BE DESIGNED AND ANCHORED TO PROPERLY TRANSFER ALL LOADS TO THE STRUCTURE. BUCK DESIGN AND INSTALLATION IS THE RESPONSIBILITY OF THE ENGINEER OR ARCHITECT OF RECORD FOR THE PROJECT OF INSTALLATION.
- THE INSTALLATION DETAILS DESCRIBED HEREIN ARE GENERIC AND MAY NOT REFLECT ACTUAL CONDITIONS FOR A SPECIFIC IF SITE CONDITIONS CAUSE INSTALLATION TO DEVIATE FROM THE REQUIREMENTS DETAILED HEREIN, A LICENSED ENGINEER OR ARCHITECT SHALL PREPARE SITE SPECIFIC DOCUMENTS FOR USE WITH THIS DOCUMENT.
- APPROVED IMPACT PROTECTIVE SYSTEM **IS NOT REQUIRED** TO PROTECT THIS PRODUCT IN AREAS REQUIRING IMPACT RESISTANCE.
- FRAME MATERIAL: STEEL 16 GA. (0.053") MIN.  
FY MIN. 45.7 KSI
- DOOR MATERIAL: STEEL 18 GA. (0.045") MIN.  
FY MIN. 43.9 KSI
- DESIGNATIONS "X" STANDS FOR THE FOLLOWING:  
X: OPERABLE PANEL
- STEEL COMPONENTS SHALL BE COATED OR PROVIDED WITH CORROSION RESISTANCE PROTECTION.
- ALTERNATE LOCKING AND OPERATING HARDWARE MAY BE USED SUCH THEY ARE CURRENTLY APPROVED UNDER A SEPARATE APPROVAL. INSTALLATION SHALL MAINTAIN THE MINIMUM REQUIREMENTS & LIMITATIONS OF USE OF THE SEPARATE COMPONENT APPROVAL AND THE DETAILS HEREIN. THE LESSER DESIGN PRESSURE AND RATING OF THE COMPONENT APPROVAL AND APPROVAL HEREIN SHALL GOVERN.

### STEEL DOOR CONSTRUCTION:

THE OVERALL PANEL THICKNESS IS 1 3/4 INCH THICK. THE DOOR HINGE AND LOCK CHANNELS ARE 0.620" LEG X 1.677" WIDE X 0.062" LEG X 94.875" AND ARE CONSTRUCTED FROM 16 GAUGE (0.053") COLD-ROLLED STEEL. THE DOOR TOP AND BOTTOM END CHANNELS ARE 0.620" LEG X 1.677" WIDE X 0.62" LEG X 47.563" AND ARE CONSTRUCTED FROM 16 GAUGE (0.053") COLD-ROLLED STEEL. THE DOOR SKINS / FACE SHEETS ARE CONSTRUCTED OF **18 GAUGE** (0.045") MINIMUM COLD-ROLLED STEEL AND ATTACHED TO THE END, HINGE AND LOCK CHANNELS. THE DOOR CORE IS CONSTRUCTED OF TYPE 99-0-3/4 KRAFT PAPER HONEYCOMB CORE AND ATTACHED TO THE FACES WITH GLUE. THE DOOR HINGE REINFORCEMENTS ARE 1.375" WIDE X 4.5" LONG X 0.132" THICK AND ARE CONSTRUCTED FROM 9 GAUGE (0.132") COLD-ROLLED STEEL. THE MORTISE DOOR LOCK REINFORCEMENTS ARE 1.677" X 6" X 14" AND ARE CONSTRUCTED FROM 14 GAUGE (0.072") FORMED STEEL. THE SURFACE BOLT REINFORCEMENTS ARE 1.677" X 6" X 18" AND ARE CONSTRUCTED FROM 14 GAUGE (0.072") FORMED STEEL. THE RIM EXIT REINFORCEMENTS ARE 1.677" X 6" X 14" AND ARE CONSTRUCTED FROM 14 GAUGE (0.072") FORMED STEEL. THE SVR LOCK REINFORCEMENTS ARE 1.677" X 6" X 93.625" AND ARE CONSTRUCTED FROM 14 GAUGE (0.072") FORMED STEEL. THE CLOSER REINFORCEMENTS ARE 1.677" X 6" X 18" AND ARE CONSTRUCTED FROM 14 GAUGE (0.072") FORMED STEEL. THE DEAD LOCK REINFORCEMENTS ARE 3" X 2.5" AND ARE CONSTRUCTED FROM 16 GAUGE (0.053") FORMED STEEL. THE CYLINDRICAL LOCK REINFORCEMENTS ARE 3" X 2.5" AND ARE CONSTRUCTED FROM 16 GAUGE (0.053") FORMED STEEL. THE DOOR SURFACE BOLTS ARE IVES MODEL 360 SURFACE BOLTS LOCATED AT THE TOP AND BOTTOM MEETING EDGE CORNER OF THE INACTIVE LEAF.

### FRAME CONSTRUCTION:

THE DOOR FRAMES ARE CONSTRUCTED FROM 16 GAUGE (0.053") COLD-ROLLED STEEL. THE CORNERS ARE MITERED KNOCK DOWN MECHANICALLY FASTENED. THE DOOR FRAME CORNER REINFORCEMENTS ARE KNOCK DOWN. THE DOOR FRAME HINGES ARE S. PARKER 4.5" X 4.5" X 0.134" FULL MORTISE BUTT-TYPE STANDARD WEIGHT HINGES. THE DOOR FRAME HINGE REINFORCEMENTS ARE 7.50" LONG X 1.625" WIDE AND ARE CONSTRUCTED OF 9 GAUGE (0.132" MIN.) COLD-ROLLED STEEL. THE DOOR FRAME HEADER REINFORCEMENTS (REQUIRED ON PAIR OPENINGS) ARE 5.6875" X 96" AND ARE CONSTRUCTED OF 14 GAUGE (0.072") FORMED STEEL OR OPTIONAL 10 GAUGE (0.125") X 1.5" FLAT BAR STOCK. THE DOOR FRAME BASE ANCHORS ARE 1.875" X 1.875" AND ARE CONSTRUCTED OF 16 GAUGE (0.053") FORMED STEEL. THE DOOR FRAME MULLION REINFORCEMENTS ARE 5/8" BAR STOCK 4.0" X 1.5". THE DOOR FRAME SURFACE BOLT REINFORCEMENTS ARE 1.5" X 1.5" 3 GAUGE STEEL ANGLES.

| TABLE OF CONTENTS |  |
|-------------------|--|
| SHEET             | SHEET DESCRIPTION                            |
| 1                 | INSTALLATION & GENERAL NOTES                 |
| 2                 | SURFACE VERTICAL ROD ELEVATIONS & DETAILS    |
| 3                 | RIM EXIT DEVICE ELEVATIONS & DETAILS         |
| 4                 | CYLINDRICAL W/ DEADLOCK ELEVATIONS & DETAILS |
| 5                 | MORTISE LOCK ELEVATIONS & DETAILS            |
| 6                 | ANCHOR LAYOUT                                |
| 7                 | VERTICAL SECTIONS                            |
| 8                 | HORIZONTAL SECTIONS                          |
| 9                 | CORNER ASSEMBLIES & COMPONENTS               |
| 10                | BILL OF MATERIALS                            |
| 11                | COMPONENTS                                   |

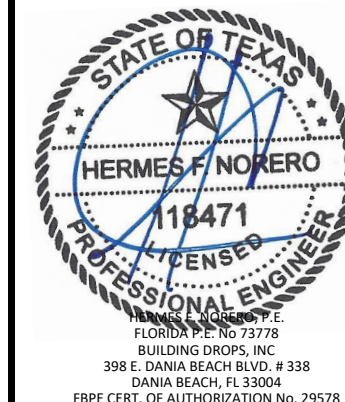
| DESIGN PRESSURE RATING    |                        |                                    |
|---------------------------|------------------------|------------------------------------|
| DESIGN PRESSURE ALL SIZES | MISSILE IMPACT RATING  |                                    |
| +60/-60 PSF               | W/O WATER INFILTRATION | SMALL & LARGE MISSILE IMPACT RATED |

TITLE: DL 418 STEEL FLUSH DOOR  
INSTALLATION & GENERAL NOTES

PREPARED BY: BUILDING DROPS, INC.  
398 E. DANIA BEACH BLVD., STE. 338  
DANIA BEACH, FL 33004  
PH: (954) 399-8478  
FAX: (954) 744-4738  
WEB: www.buildingdrops.com

| REMARKS         | BY | DATE    |
|-----------------|----|---------|
| 2018 IBC UPDATE | CA | 3.28.22 |
|                 |    |         |
|                 |    |         |

THE INSTALLATION DETAILS DESCRIBED HEREIN ARE GENERIC AND MAY NOT REFLECT ACTUAL CONDITIONS FOR A SPECIFIC SITE. IF SITE CONDITIONS CAUSE INSTALLATION TO DEVIATE FROM THE REQUIREMENTS DETAILED HEREIN, A LICENSED ENGINEER OR ARCHITECT SHALL PREPARE SITE SPECIFIC DOCUMENTS FOR USE WITH THIS DOCUMENT.



DATE: 03.17.17  
DWG. BY: JLR  
CHK. BY: HFN  
SCALE: NTS  
DWG. #: RDF016  
SHEET:

\*FASTENERS SHOWN ARE TYPICAL/MINIMUM

**Republic**  
doors-frames

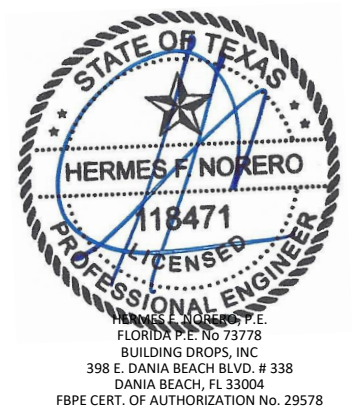
155 REPUBLIC DRIVE  
MCKENZIE, TN 38201  
PH: (800) 799-3667 FX: (731) 352-2556

TITLE:  
DL 418 STEEL FLUSH DOOR  
SURFACE VERTICAL ROD  
ELEVATIONS & DETAILS

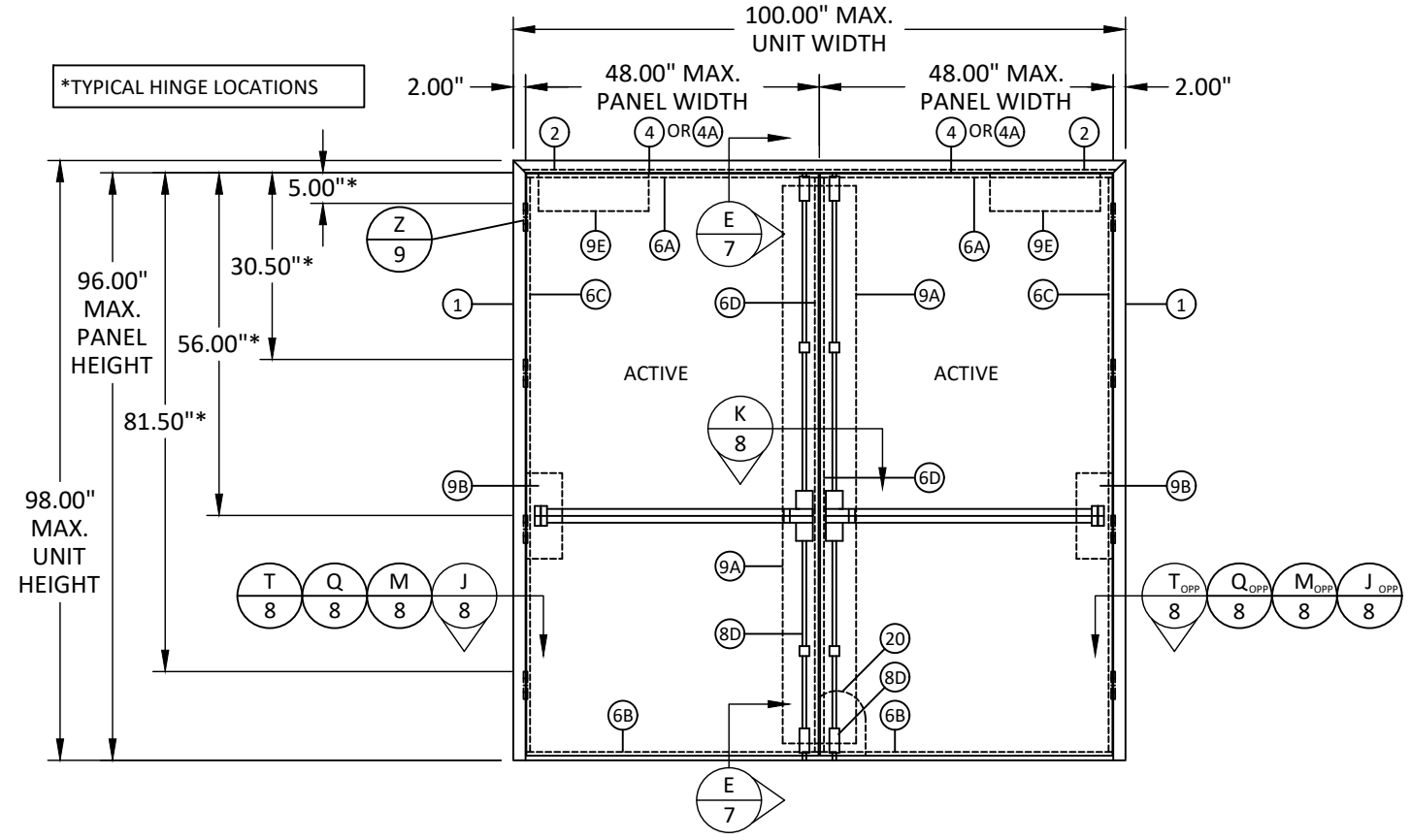
PREPARED BY:  
**B.D.**  
BUILDING DROPS  
398 E. DANIA BEACH BLVD., STE. 338  
DANIA BEACH, FL 33004  
PH: (954) 399-8478  
FAX: (954) 744-4738  
WEB: www.buildingdrops.com

| REMARKS         | BY | DATE    |
|-----------------|----|---------|
| 2018 IBC UPDATE | CA | 3.28.22 |
|                 |    |         |
|                 |    |         |

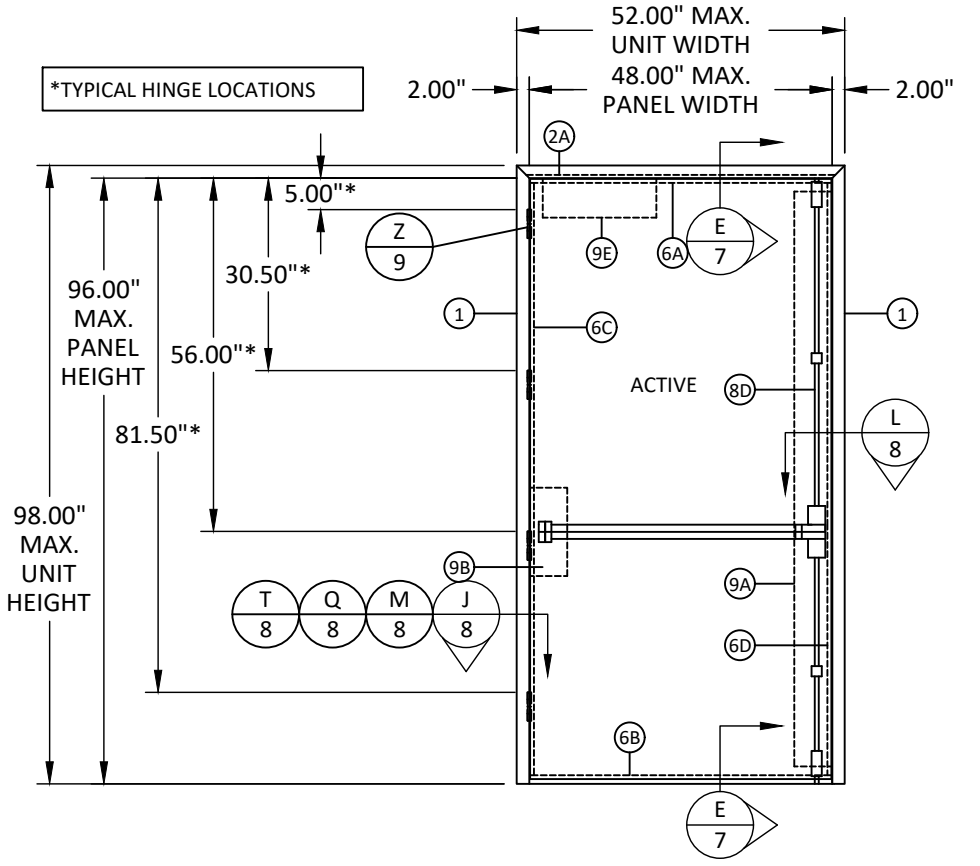
THE INSTALLATION DETAILS DESCRIBED HEREIN ARE GENERIC AND MAY NOT REFLECT ACTUAL CONDITIONS FOR A SPECIFIC SITE. IF SITE CONDITIONS CAUSE INSTALLATION TO DEVIATE FROM THE REQUIREMENTS DETAILED HEREIN, A LICENSED ENGINEER OR ARCHITECT SHALL PREPARE SITE SPECIFIC DOCUMENTS FOR USE WITH THIS DOCUMENT.



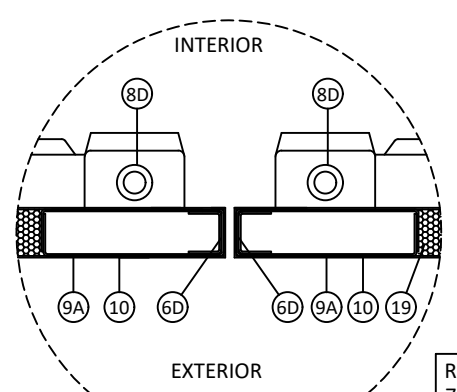
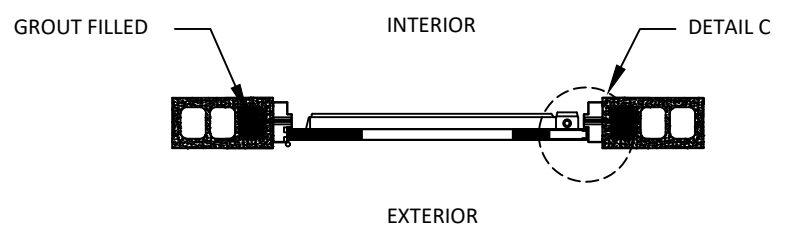
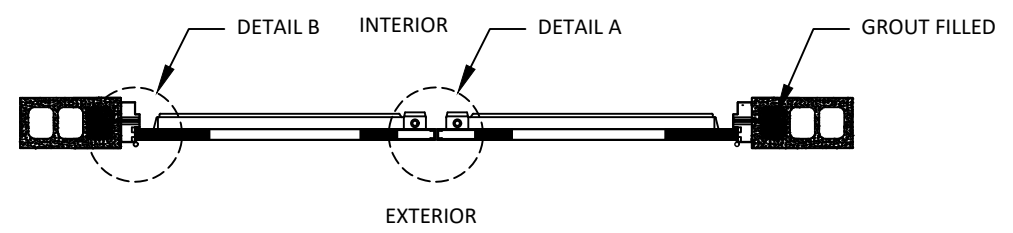
|          |          |              |
|----------|----------|--------------|
| DATE:    | 03.17.17 |              |
| DWG. BY: | JLR      | CHK. BY: HFN |
| SCALE:   | NTS      |              |
| DWG. #:  | RDF016   |              |
| SHEET:   | 2        |              |



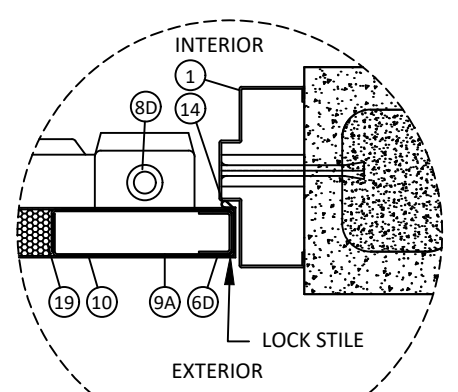
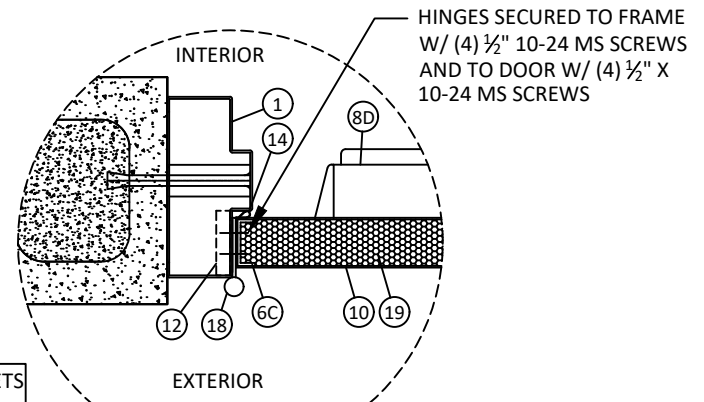
**ELEVATION DOUBLE**  
**SURFACE VERTICAL ROD**  
(OUTSWING DOOR - INTERIOR VIEW)



**ELEVATION SINGLE**  
**SURFACE VERTICAL ROD**  
(OUTSWING DOOR - INTERIOR VIEW)



REFER TO DETAILS ON SHEETS  
7 AND 8 FOR STRIKE PLATE  
AND FASTENING DETAILS



**DETAIL A**

**DETAIL B**

**DETAIL C**

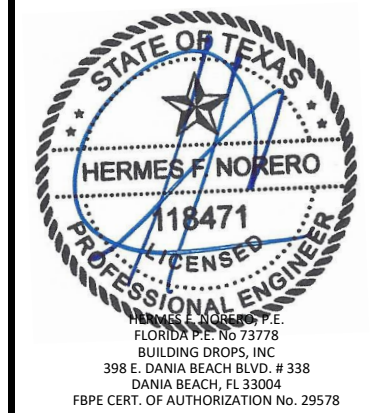
3/30/2022 4:58 PM  
s:\projects\republic doors\22-0116 rfi submittal - dr551 - dr999 - dr1000 - dr1001 - dr1002\dwgs\1. dl418 steel flush outswing door (id 7115)\rdf016.dwg

TITLE: DL 418 STEEL FLUSH DOOR  
RIM EXIT DEVICE  
ELEVATIONS & DETAILS

PREPARED BY: **BUILDING DROPS, INC.**  
398 E. DANIA BEACH BLVD., STE. 338  
DANIA BEACH, FL 33004  
PH: (954) 399-8478  
FAX: (954) 744-4738  
WEB: www.buildingdrops.com

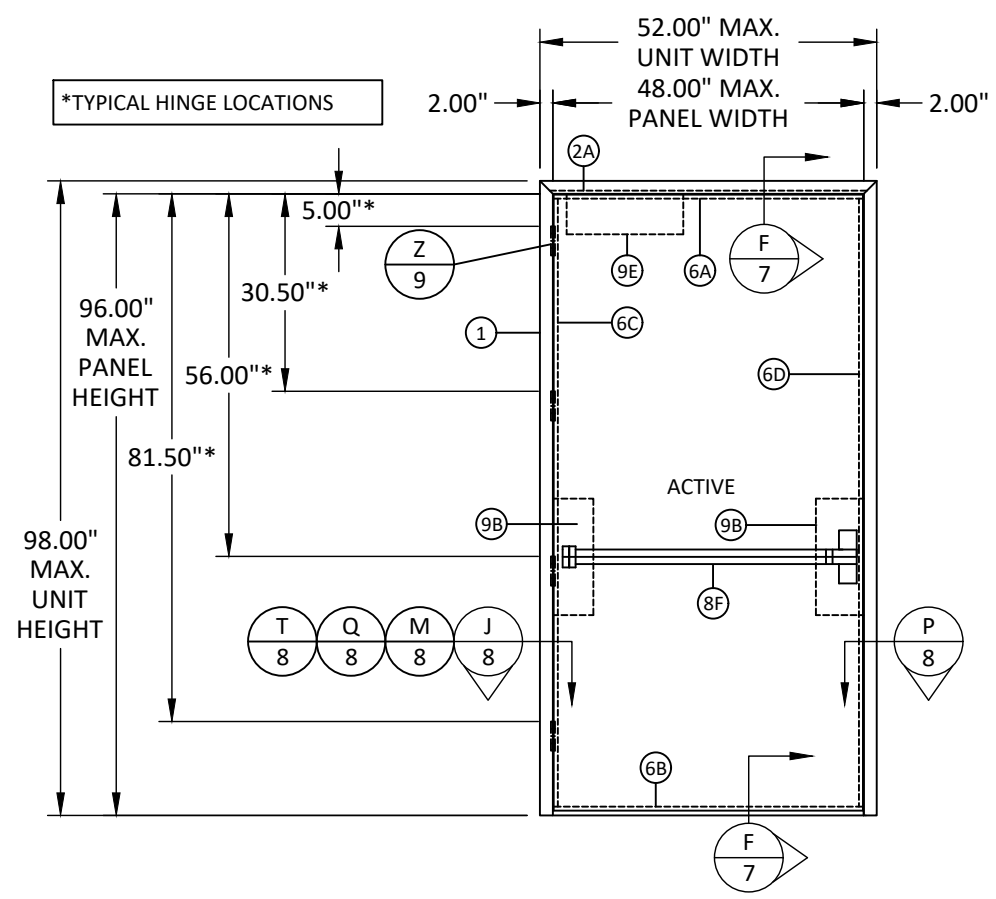
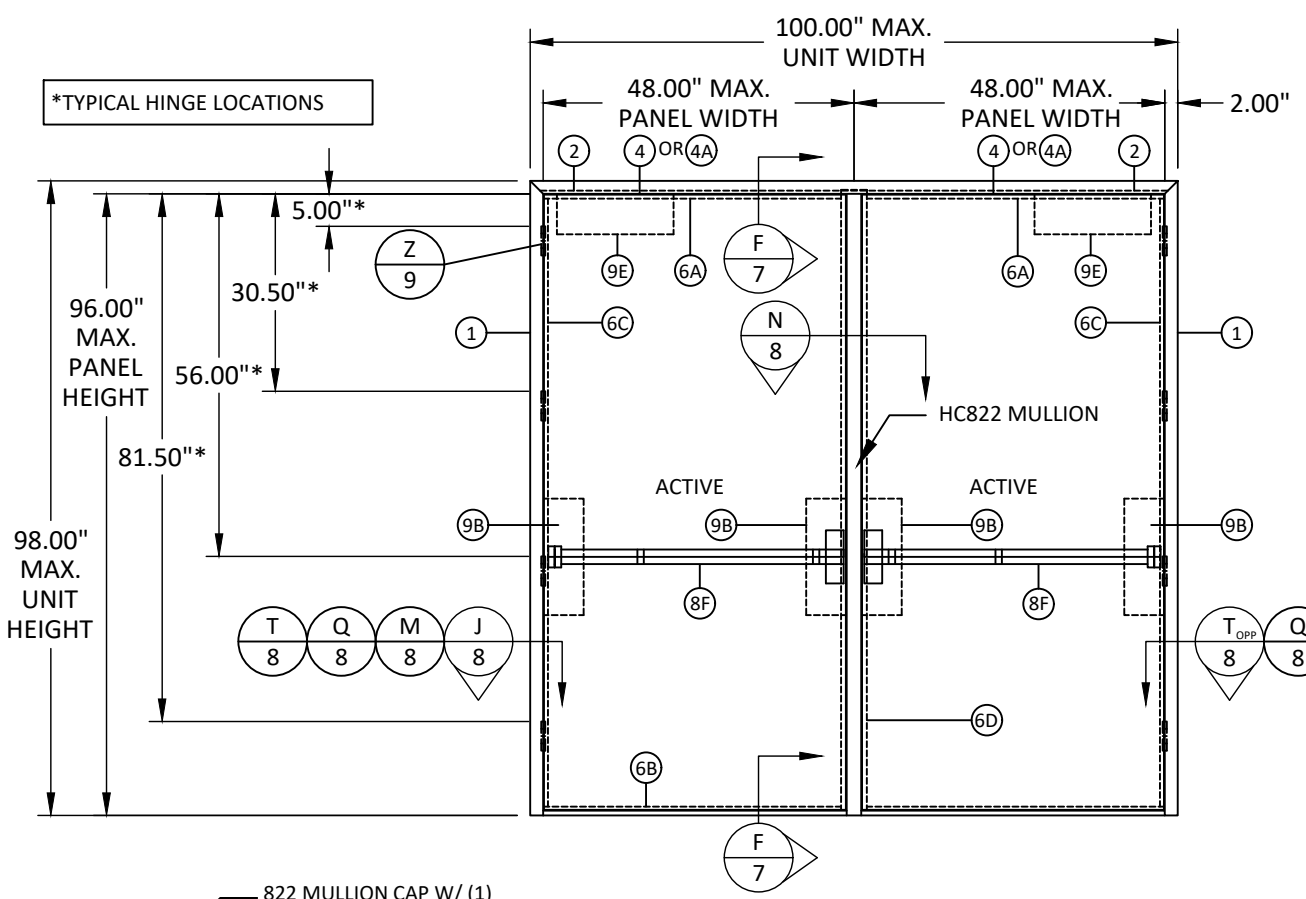
| REMARKS         | BY | DATE    |
|-----------------|----|---------|
| 2018 IBC UPDATE | CA | 3.28.22 |
|                 |    |         |
|                 |    |         |

THE INSTALLATION DETAILS DESCRIBED HEREIN ARE GENERIC AND MAY NOT REFLECT ACTUAL CONDITIONS FOR A SPECIFIC SITE. IF SITE CONDITIONS CAUSE INSTALLATION TO DEVIATE FROM THE REQUIREMENTS DETAILED HEREIN, A LICENSED ENGINEER OR ARCHITECT SHALL PREPARE SITE SPECIFIC DOCUMENTS FOR USE WITH THIS DOCUMENT.



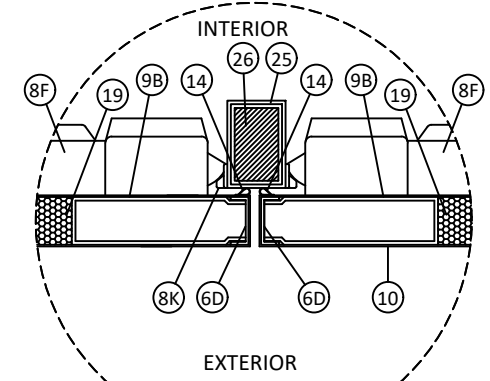
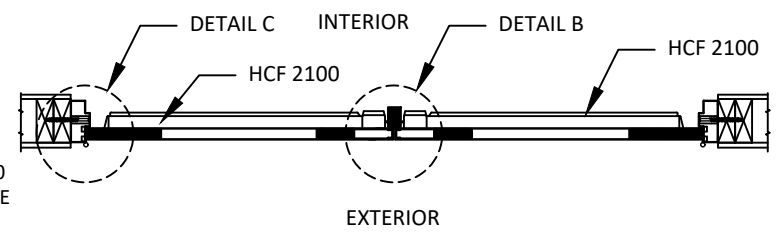
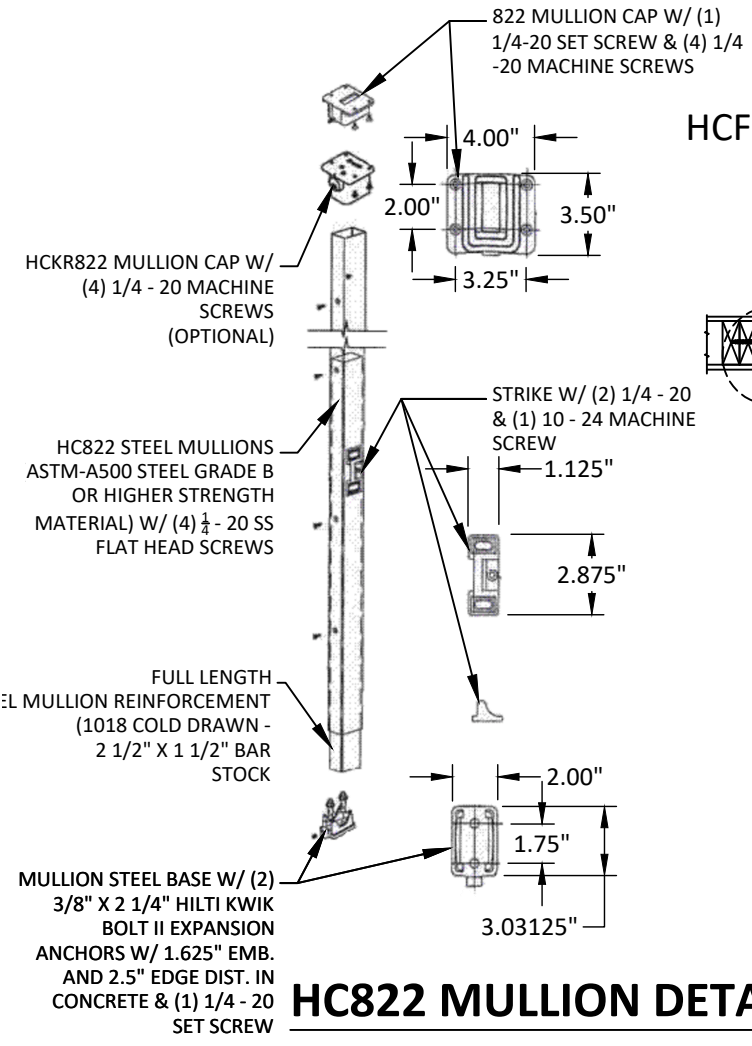
|          |          |              |
|----------|----------|--------------|
| DATE:    | 03.17.17 |              |
| DWG. BY: | JLR      | CHK. BY: HFN |
| SCALE:   | NTS      |              |
| DWG. #:  | RDF016   |              |

SHEET: **3**  
OF 11

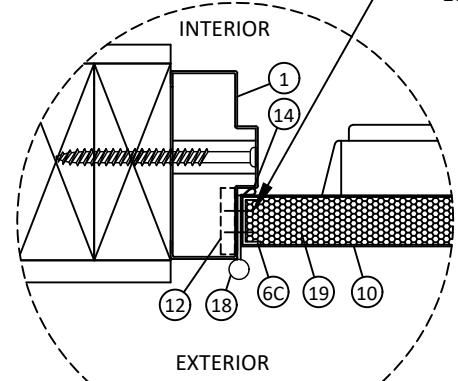


**ELEVATION DOUBLE**  
HCF 2100 RIM EXIT DEVICE W/ HC822 MULLION  
(OUTSWING DOOR - INTERIOR VIEW)

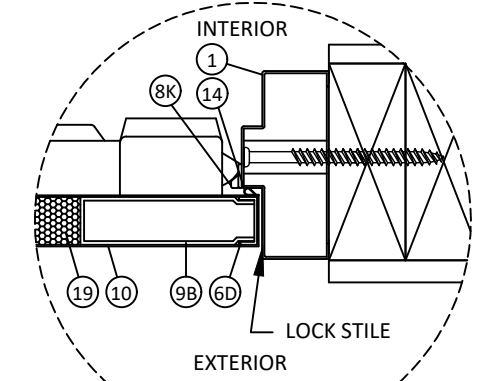
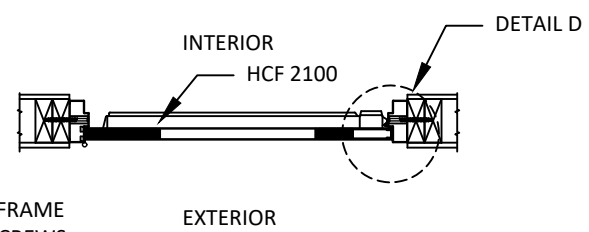
**ELEVATION SINGLE**  
RIM EXIT DEVICE  
(OUTSWING DOOR - INTERIOR VIEW)



REFER TO DETAILS AT LEFT AND ON SHEETS 7 AND 8 FOR STRIKE PLATE AND FASTENING DETAILS



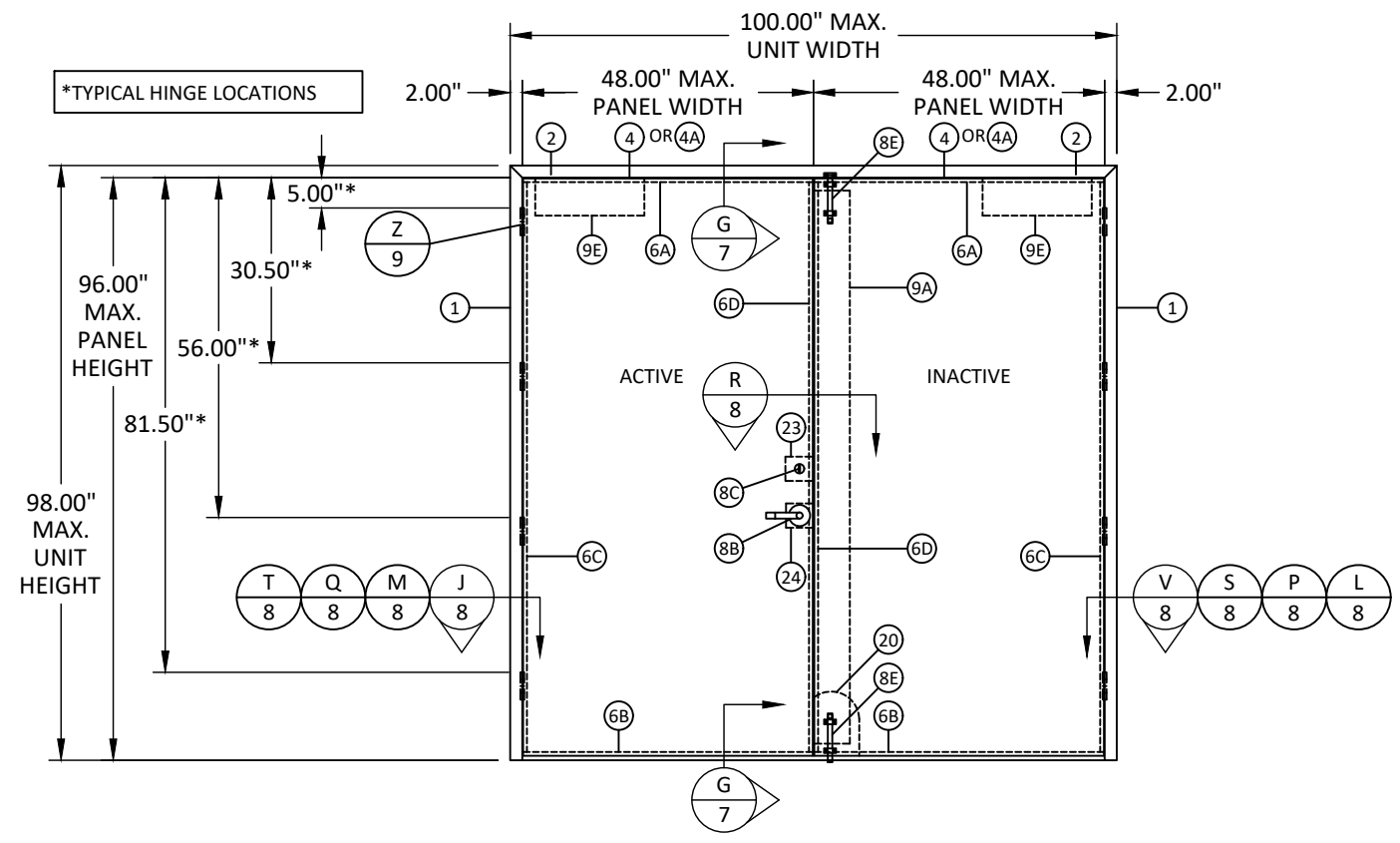
HINGES SECURED TO FRAME W/ (4) 1/2\"/>



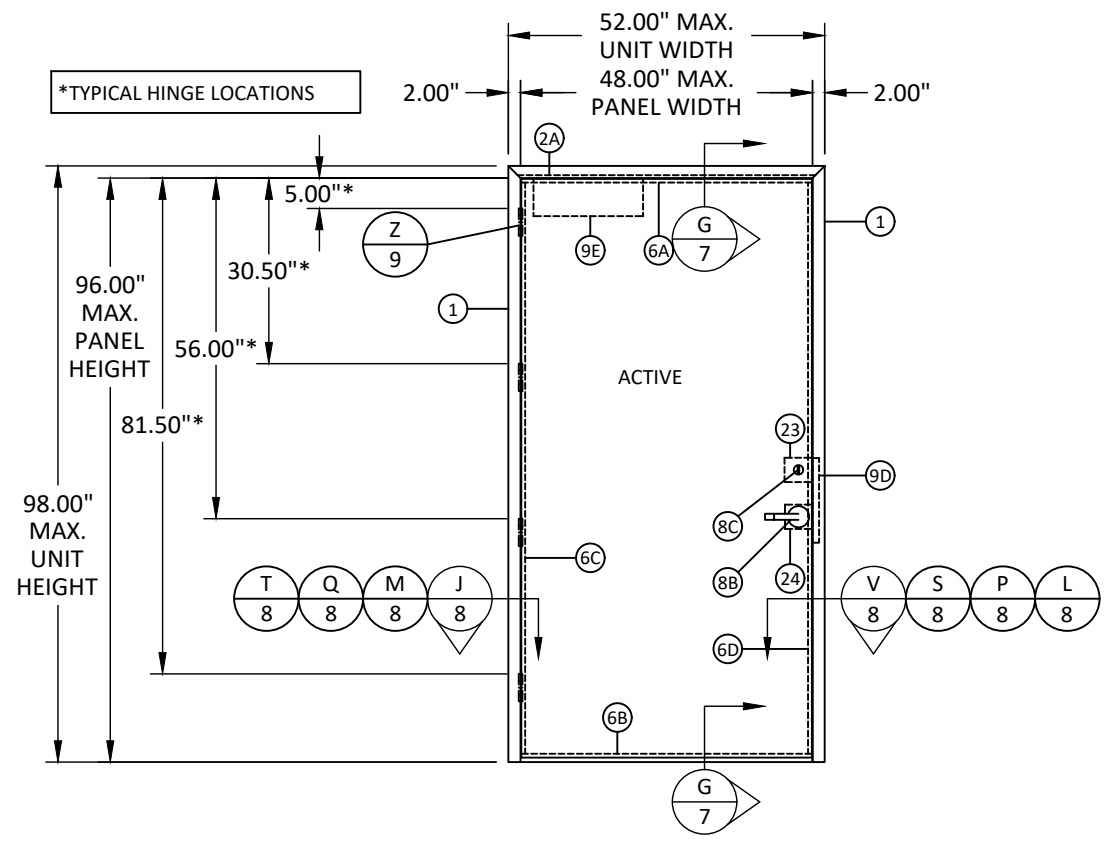
**DETAIL D**

3/30/2022 4:58 PM  
s:\projects\republic-doors\12-22-0116 rdi submittal - dr551, dr999, dr1000, dr1001, dr1002\dwg\1. dl18 steel flush outswing door (id 7115)\rdf016.dwg

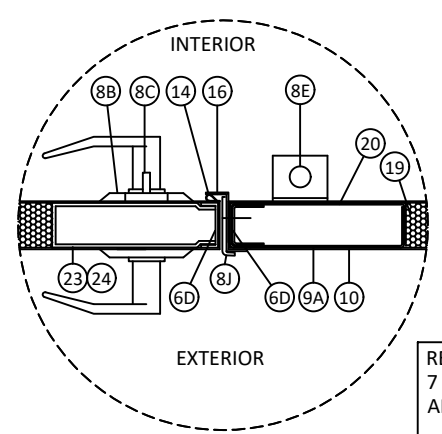
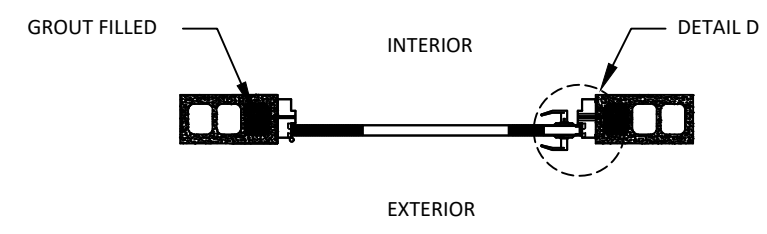
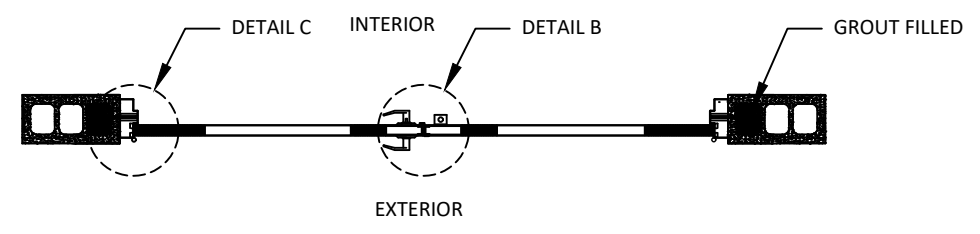
\*FASTENERS SHOWN ARE TYPICAL/MINIMUM



**ELEVATION DOUBLE**  
CYLINDRICAL LOCK WITH DEADLOCK  
(OUTSWING DOOR - INTERIOR VIEW)

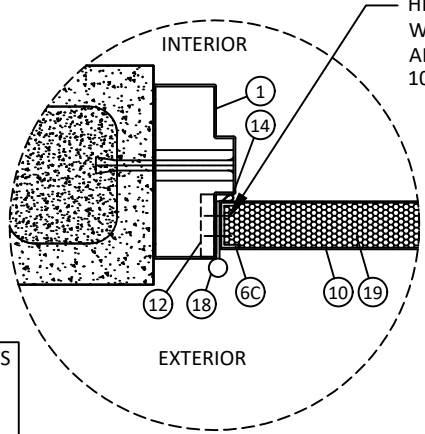


**ELEVATION SINGLE**  
CYLINDRICAL LOCK WITH DEADBOLT  
(OUTSWING DOOR - INTERIOR VIEW)



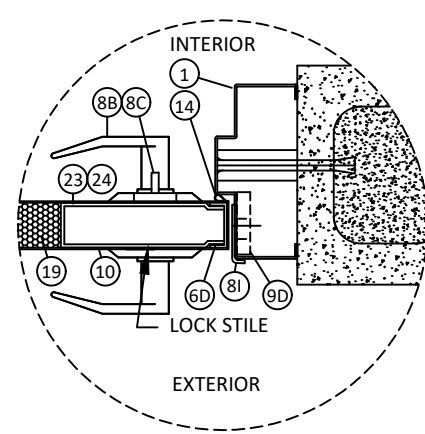
**DETAIL B**

REFER TO DETAILS ON SHEETS 7 AND 8 FOR STRIKE PLATE AND FASTENING DETAILS



**DETAIL C**

HINGES SECURED TO FRAME W/ (4) 1/2" 10-24 MS SCREWS AND TO DOOR W/ (4) 1/2" X 10-24 MS SCREWS



**DETAIL D**



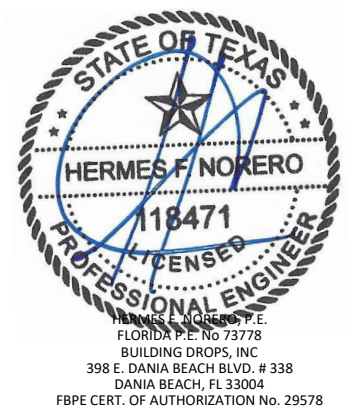
155 REPUBLIC DRIVE  
MCKENZIE, TN 38201  
PH: (800) 799-3667 FX: (731) 352-2556

TITLE:  
DL 418 STEEL FLUSH DOOR  
CYLINDRICAL W/ DEADLOCK  
ELEVATIONS & DETAILS

PREPARED BY:  
**BUILDING DROPS, INC.**  
398 E. DANIA BEACH BLVD., STE. 338  
DANIA BEACH, FL 33004  
PH: (954) 399-8478  
FAX: (954) 744-4738  
WEB: www.buildingdrops.com

| REMARKS         | BY | DATE    |
|-----------------|----|---------|
| 2018 IBC UPDATE | CA | 3.28.22 |
|                 |    |         |
|                 |    |         |

THE INSTALLATION DETAILS DESCRIBED HEREIN ARE GENERIC AND MAY NOT REFLECT ACTUAL CONDITIONS FOR A SPECIFIC SITE. IF SITE CONDITIONS CAUSE INSTALLATION TO DEVIATE FROM THE REQUIREMENTS DETAILED HEREIN, A LICENSED ENGINEER OR ARCHITECT SHALL PREPARE SITE SPECIFIC DOCUMENTS FOR USE WITH THIS DOCUMENT.



|          |          |              |
|----------|----------|--------------|
| DATE:    | 03.17.17 |              |
| DWG. BY: | JLR      | CHK. BY: HFN |
| SCALE:   | NTS      |              |
| DWG. #:  | RDF016   |              |

SHEET:  
**4**  
OF 11

\*FASTENERS SHOWN ARE TYPICAL/MINIMUM

**Republic**  
doors - frames

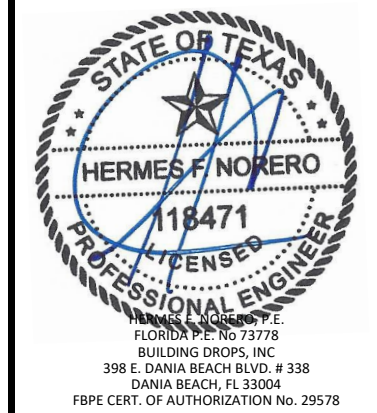
155 REPUBLIC DRIVE  
MCKENZIE, TN 38201  
PH: (800) 799-3667 FX: (731) 352-2556

TITLE:  
DL 418 STEEL FLUSH DOOR  
MORTISE LOCK  
ELEVATIONS & DETAILS

PREPARED BY:  
**BUILDING DROPS, INC.**  
398 E. DANIA BEACH BLVD., STE. 338  
DANIA BEACH, FL 33004  
PH: (954) 399-8478  
FAX: (954) 744-4738  
WEB: www.buildingdrops.com

| REMARKS         | BY | DATE    |
|-----------------|----|---------|
| 2018 IBC UPDATE | CA | 3.28.22 |
|                 |    |         |
|                 |    |         |

THE INSTALLATION DETAILS DESCRIBED HEREIN ARE GENERIC AND MAY NOT REFLECT ACTUAL CONDITIONS FOR A SPECIFIC SITE. IF SITE CONDITIONS CAUSE INSTALLATION TO DEVIATE FROM THE REQUIREMENTS DETAILED HEREIN, A LICENSED ENGINEER OR ARCHITECT SHALL PREPARE SITE SPECIFIC DOCUMENTS FOR USE WITH THIS DOCUMENT.



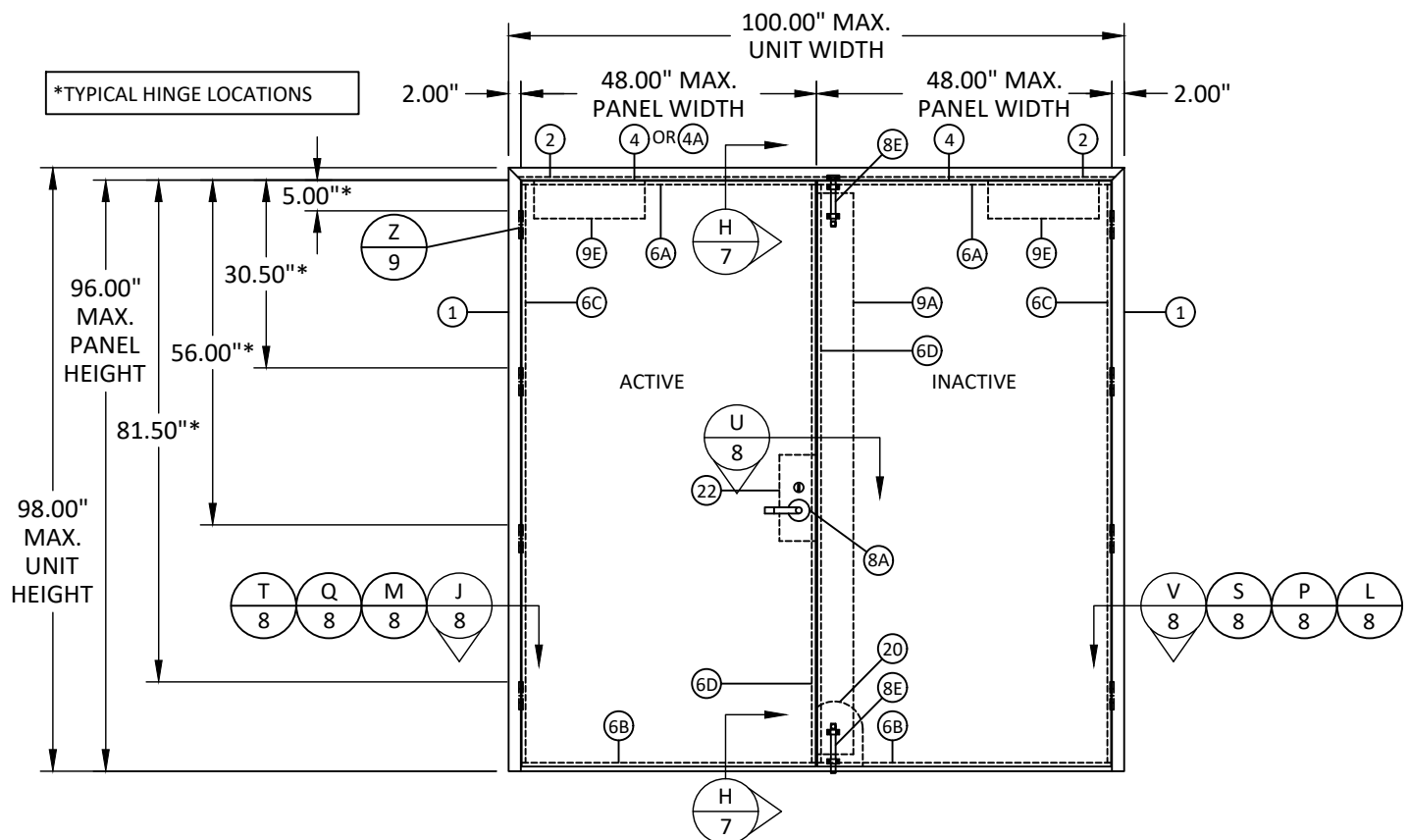
DATE: 03.17.17

|                        |                        |
|------------------------|------------------------|
| DWG. BY:<br><b>JLR</b> | CHK. BY:<br><b>HFN</b> |
|------------------------|------------------------|

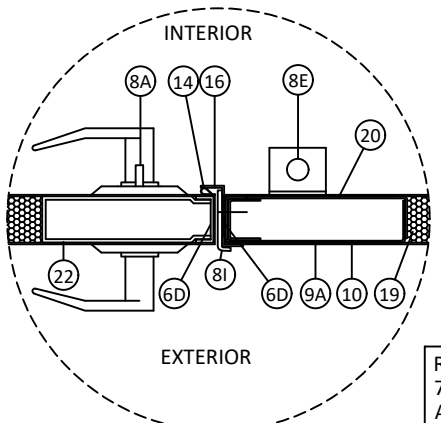
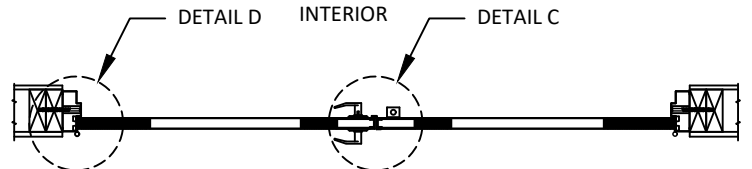
SCALE: **NTS**

DWG. #: **RDF016**

SHEET:  
**5**  
OF 11

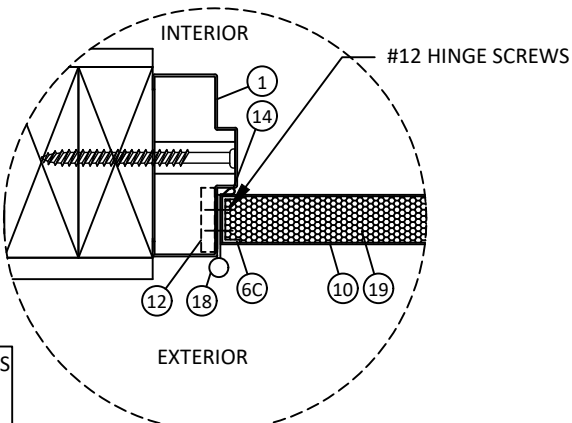


**ELEVATION DOUBLE**  
MORTISE LOCK WITH DEADLOCK  
(OUTSWING DOOR - INTERIOR VIEW)

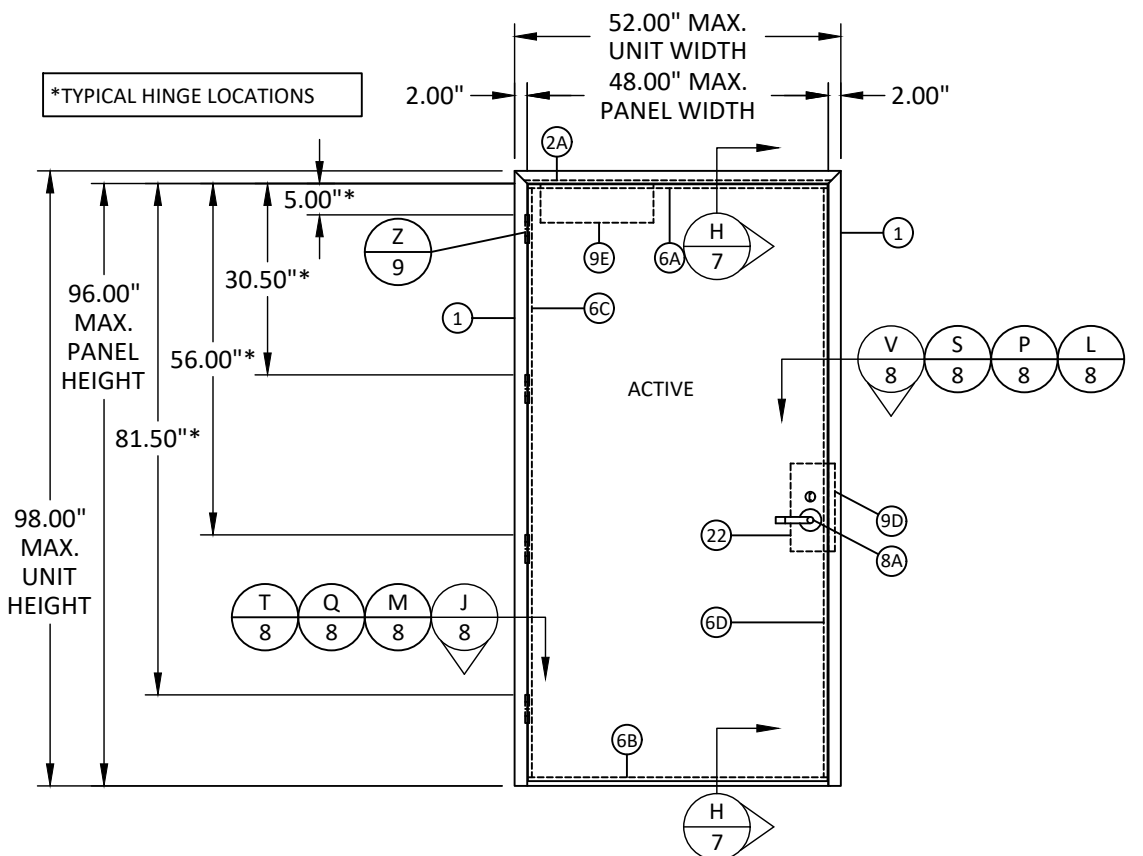


**DETAIL C**

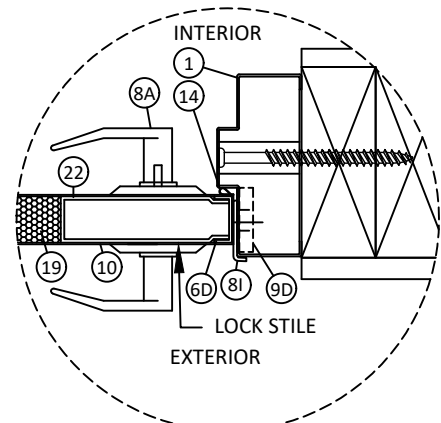
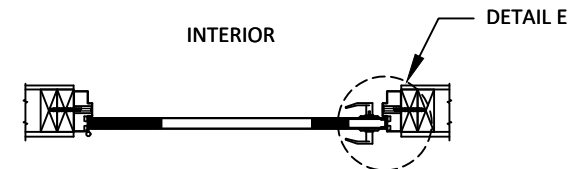
REFER TO DETAILS ON SHEETS  
7 AND 8 FOR STRIKE PLATE  
AND FASTENING DETAILS



**DETAIL D**



**ELEVATION SINGLE**  
MORTISE LOCK WITH DEADLOCK  
(OUTSWING DOOR - INTERIOR VIEW)



**DETAIL E**

3/30/2022 4:58 PM  
s:\projects\republic doors\dl-22-0116 rfi submittal - dr551, dr999, dr1000, dr1001, dr1002\dwg\1. dl418 steel flush outswing door (id 7115).rdf016.dwg

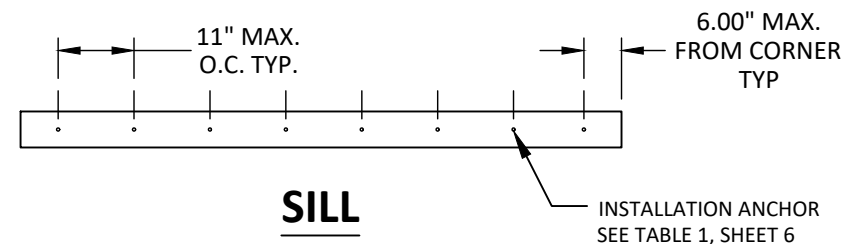
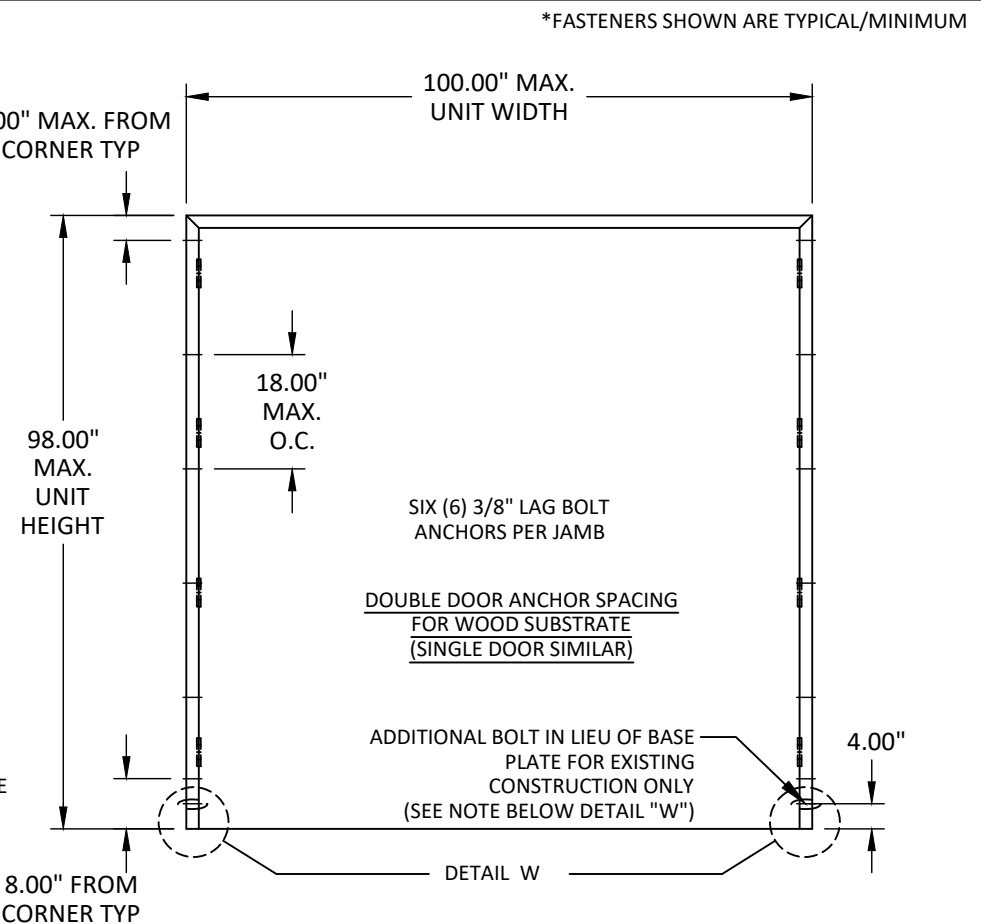
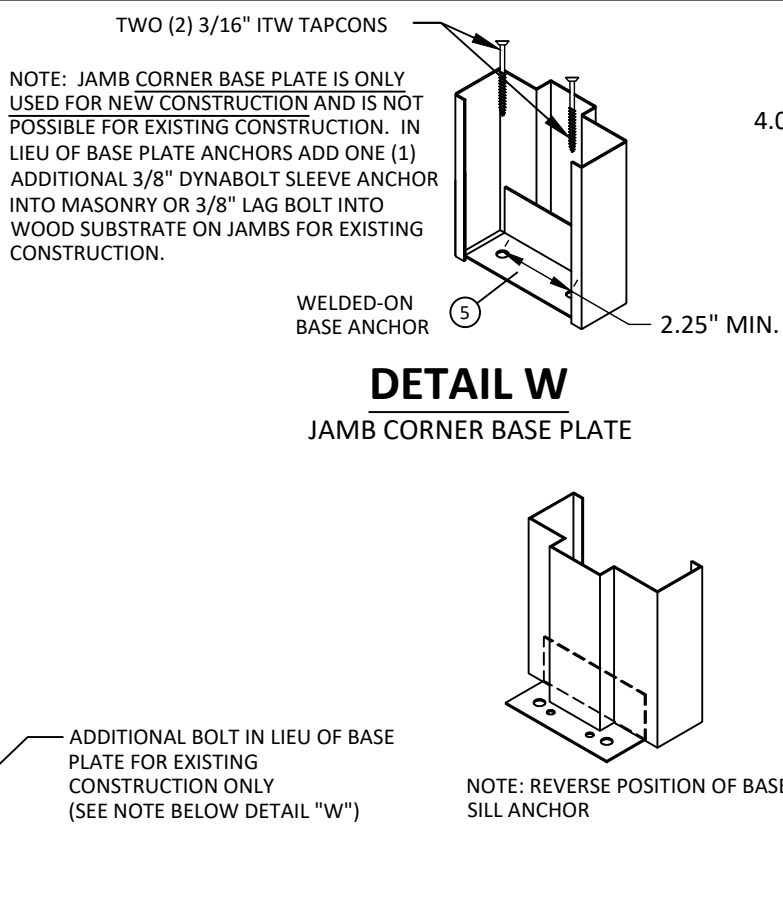
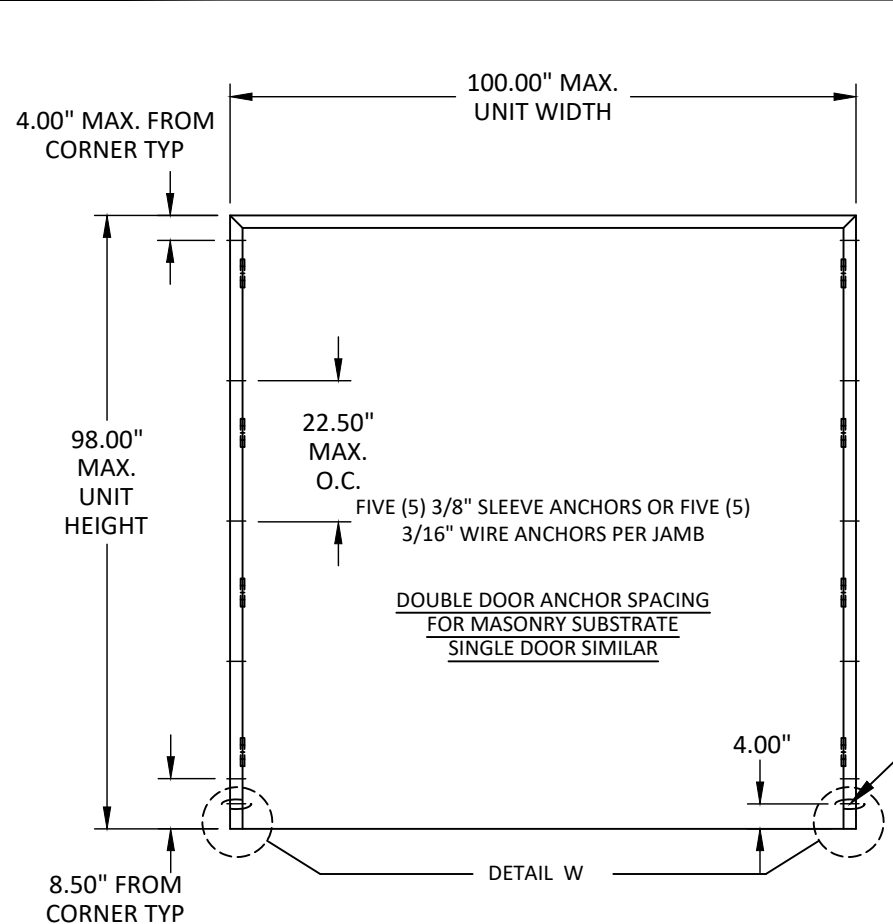
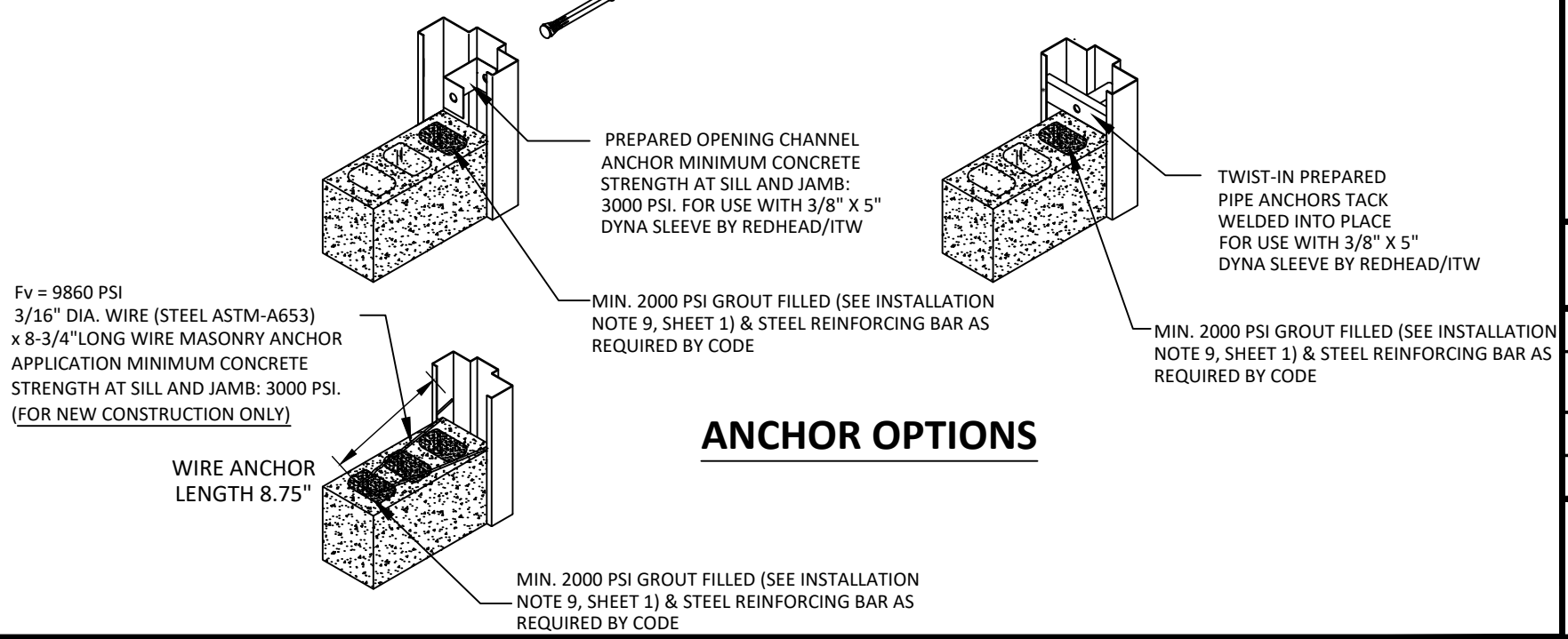
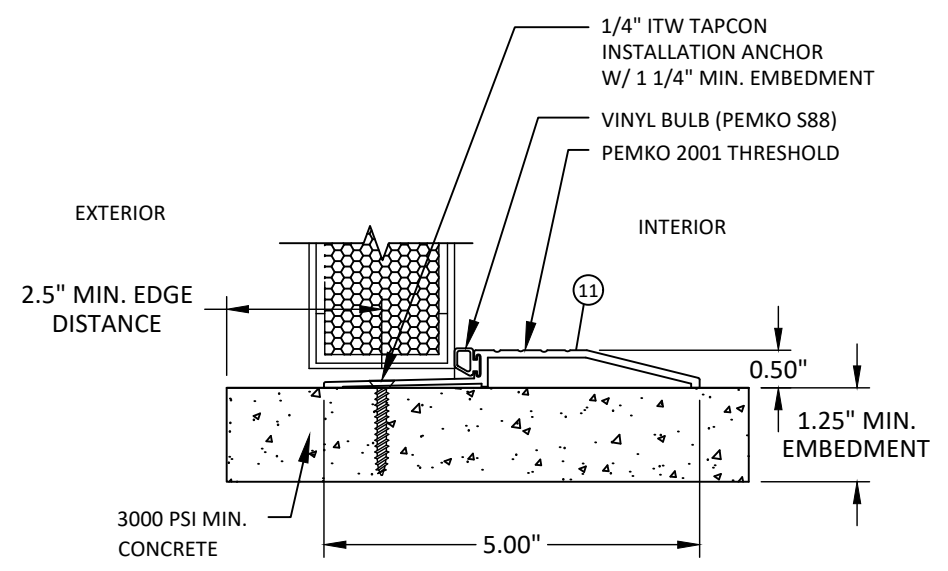
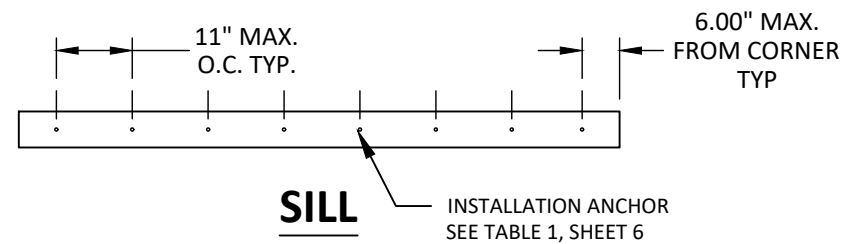


TABLE 1: CONCRETE ANCHORS AT THRESHOLD

| Anchor                 | Embedment (in) | Min. Edge Dist. (in) |
|------------------------|----------------|----------------------|
| 1/4" ITW Tapcon        | 1.25           | 2.25                 |
| 1/4" Powers Tappers+   | 1.75           | 2.5                  |
| 1/4" Hilti Kwik Con II | 1              | 2                    |
| 1/4" Elco Ultracon     | 1              | 2                    |



155 REPUBLIC DRIVE  
MCKENZIE, TN 38201  
PH: (800) 799-3667 FX: (731) 352-2556

---

TITLE: DL 418 STEEL FLUSH DOOR ANCHOR LAYOUT

PREPARED BY: BUILDING DROPS, INC.  
398 E. DANIA BEACH BLVD., STE. 338  
DANIA BEACH, FL 33004  
PH: (954) 399-8478  
FAX: (954) 744-4738  
WEB: www.buildingdrops.com

---

| REMARKS         | BY | DATE    |
|-----------------|----|---------|
| 2018 IBC UPDATE | CA | 3.28.22 |
|                 |    |         |
|                 |    |         |

THE INSTALLATION DETAILS DESCRIBED HEREIN ARE GENERIC AND MAY NOT REFLECT ACTUAL CONDITIONS FOR A SPECIFIC SITE. IF SITE CONDITIONS CAUSE INSTALLATION TO DEVIATE FROM THE REQUIREMENTS DETAILED HEREIN, A LICENSED ENGINEER OR ARCHITECT SHALL PREPARE SITE SPECIFIC DOCUMENTS FOR USE WITH THIS DOCUMENT.

HERMES F. NORERO  
118471  
PROFESSIONAL ENGINEER  
HERMES F. NORERO, P.E.  
FLORIDA P.E. No. 73778  
BUILDING DROPS, INC  
398 E. DANIA BEACH BLVD. # 338  
DANIA BEACH, FL 33004  
FBPE CERT. OF AUTHORIZATION No. 29578

---

DATE: 03.17.17

|              |              |
|--------------|--------------|
| DWG. BY: JLR | CHK. BY: HFN |
|--------------|--------------|

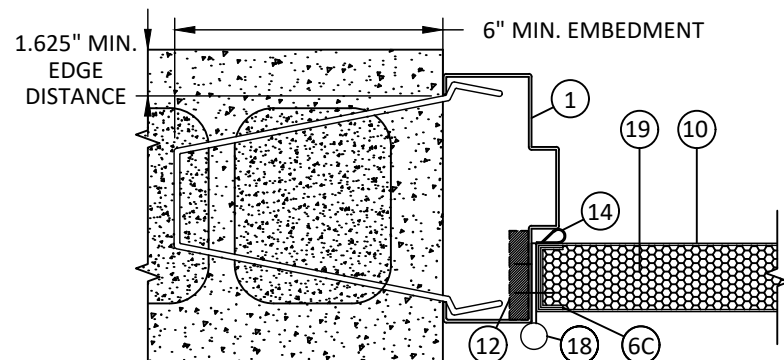
SCALE: NTS

DWG. #: RDF016

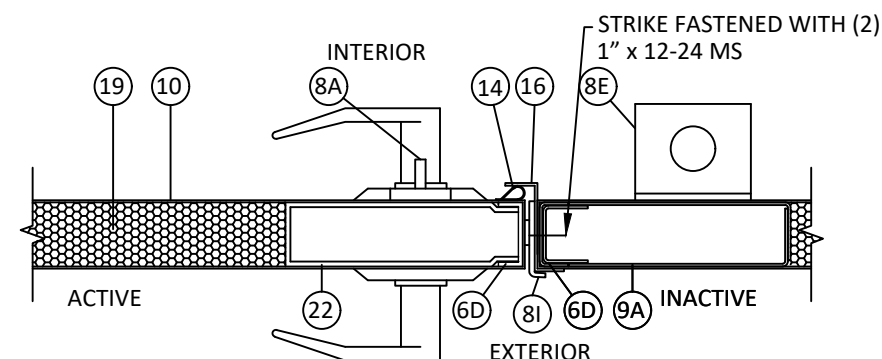
SHEET: 6 OF 11



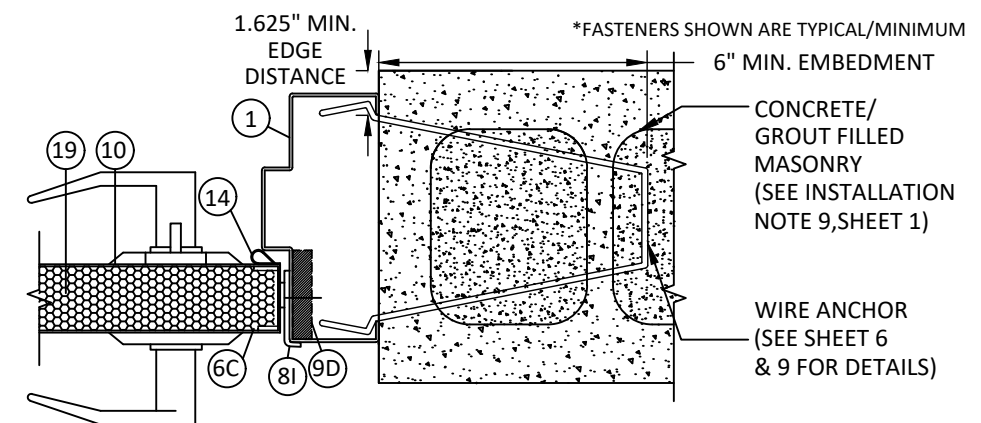
3/30/2022 4:58 PM  
 s:\projects\republic doors\dl-22-0116 rfi submittal - dr551 - dr999 - dr1000 - dr1001 - dr1002\dwg\1. dl418 steel flush door (id 7115)\rdf016.dwg



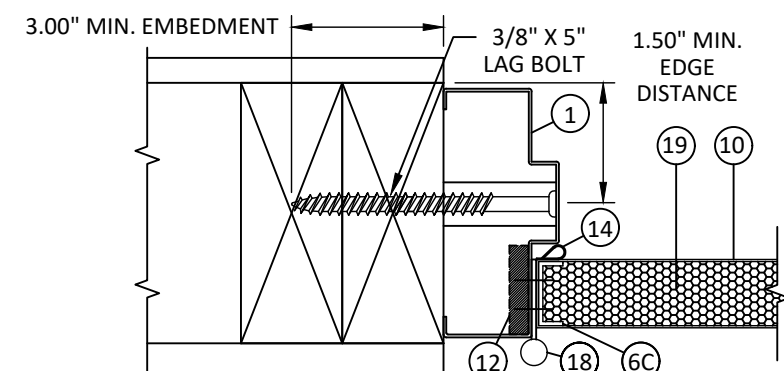
**T**  
**8**  
**HORIZONTAL SECTION**  
HINGE JAMB - CONCRETE/MASONRY  
WIRE ANCHOR



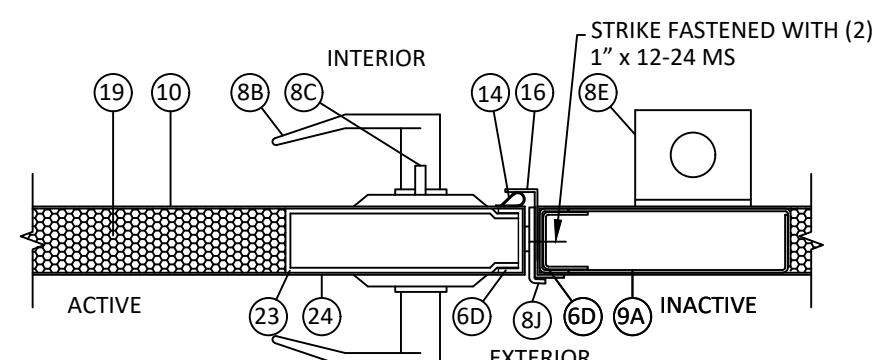
**U**  
**8**  
**HORIZONTAL SECTION**  
MORTISE LOCK WITH DEADLOCK



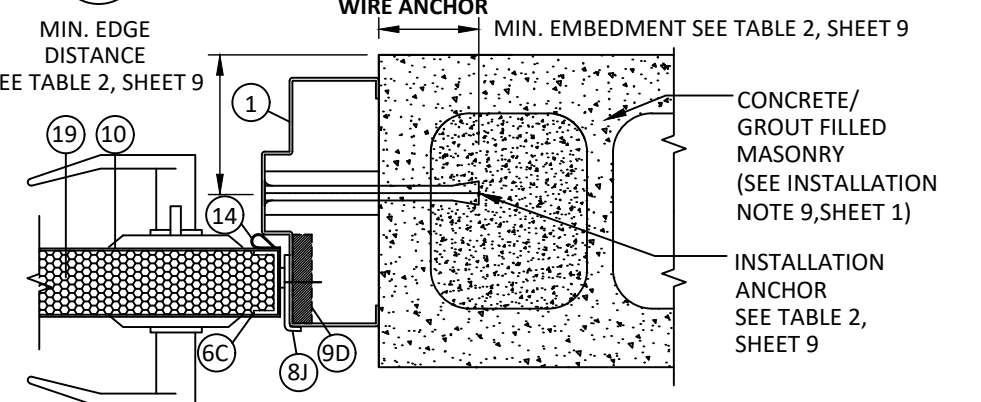
**V**  
**8**  
**HORIZONTAL SECTION**  
LOCK JAMB - CONCRETE/MASONRY  
WIRE ANCHOR



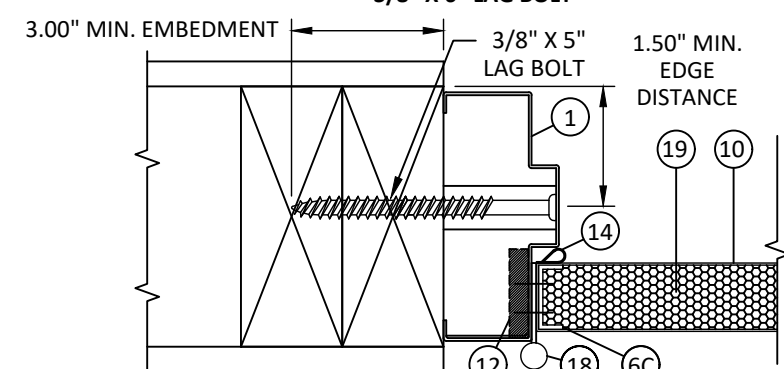
**Q**  
**8**  
**HORIZONTAL SECTION**  
HINGE JAMB - 2X WOOD FRAME  
3/8\"/>



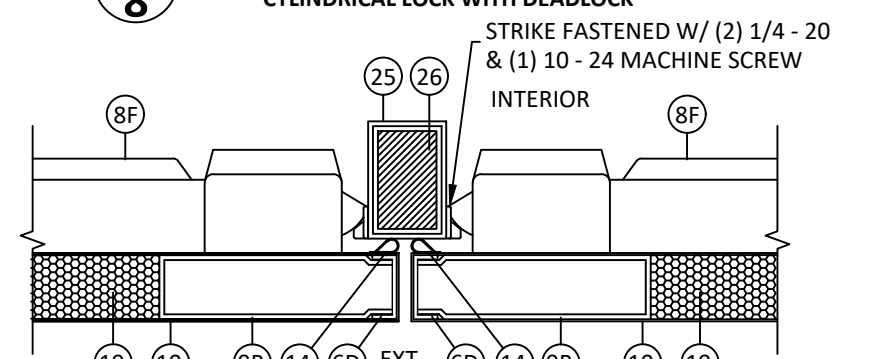
**R**  
**8**  
**HORIZONTAL SECTION**  
CYLINDRICAL LOCK WITH DEADLOCK



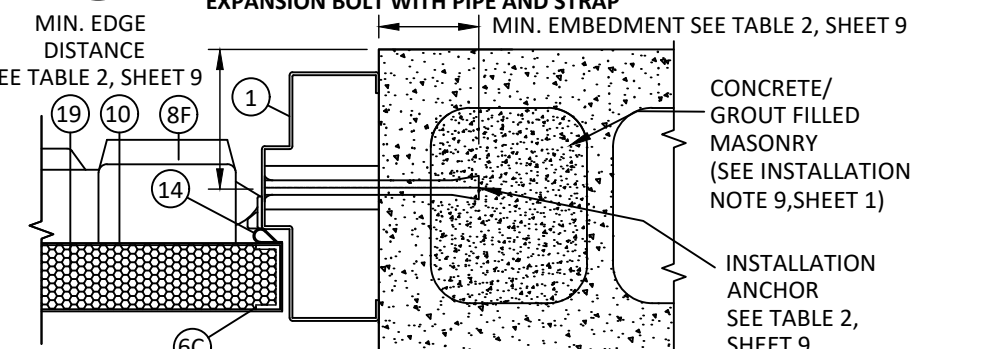
**S**  
**8**  
**HORIZONTAL SECTION**  
LOCK JAMB - CONCRETE/MASONRY  
EXPANSION BOLT WITH PIPE AND STRAP



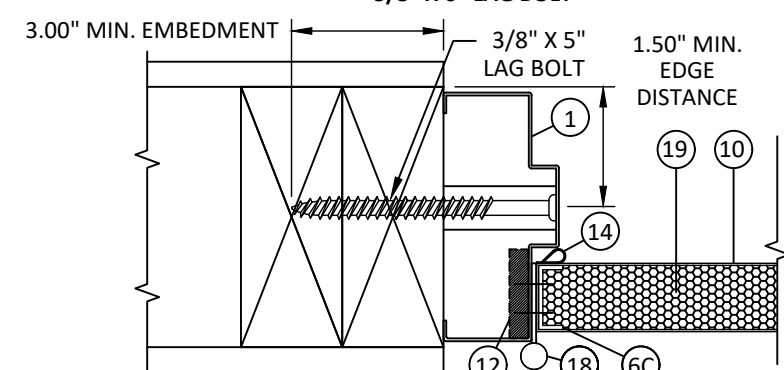
**M**  
**8**  
**HORIZONTAL SECTION**  
HINGE JAMB - 2X WOOD FRAME  
3/8\"/>



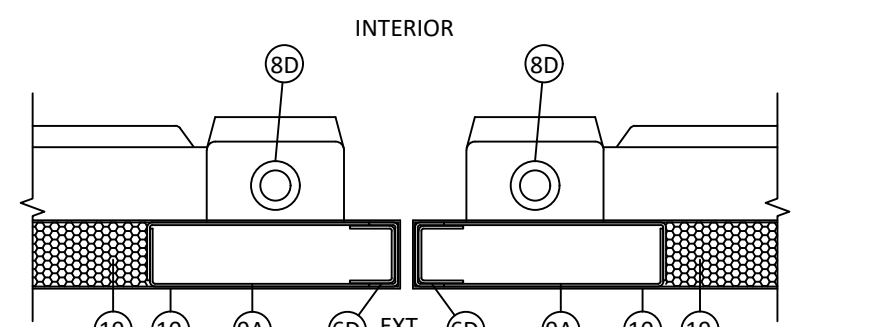
**N**  
**8**  
**HORIZONTAL SECTION**  
RIM EXIT DEVICE



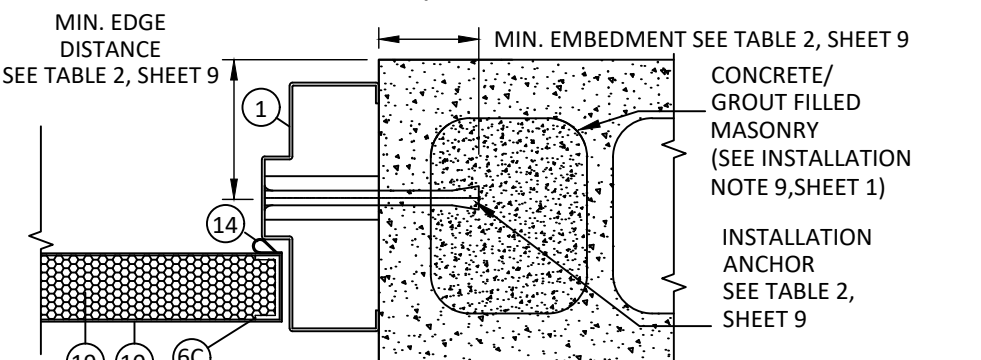
**P**  
**8**  
**HORIZONTAL SECTION**  
LOCK JAMB - CONCRETE/MASONRY  
EXPANSION BOLT W/ PIPE AND STRAP



**J**  
**8**  
**HORIZONTAL SECTION**  
HINGE JAMB - 2X WOOD FRAME  
3/8\"/>



**K**  
**8**  
**HORIZONTAL SECTION**  
SURFACE VERTICAL ROD



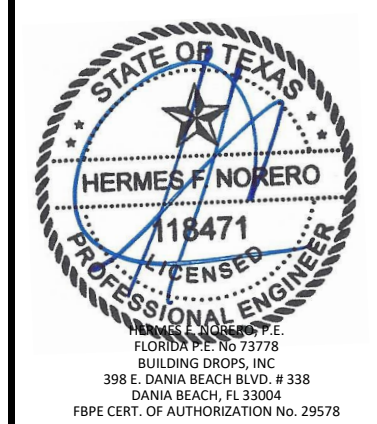
**L**  
**8**  
**HORIZONTAL SECTION**  
LOCK JAMB - CONCRETE/MASONRY  
EXPANSION BOLT W/ PIPE AND STRAP

TITLE:  
DL 418 STEEL FLUSH DOOR  
HORIZONTAL SECTIONS

PREPARED BY:  
**B.D.**  
BUILDING DROPS, INC.  
398 E. DANIA BEACH BLVD., STE. 338  
DANIA BEACH, FL 33004  
PH: (954) 399-8478  
FAX: (954) 744-4738  
WEB: www.buildingdrops.com

| REMARKS         | BY | DATE    |
|-----------------|----|---------|
| 2018 IBC UPDATE | CA | 3.28.22 |
|                 |    |         |
|                 |    |         |

THE INSTALLATION DETAILS DESCRIBED HEREIN ARE GENERIC AND MAY NOT REFLECT ACTUAL CONDITIONS FOR A SPECIFIC SITE. IF SITE CONDITIONS CAUSE INSTALLATION TO DEVIATE FROM THE REQUIREMENTS DETAILED HEREIN, A LICENSED ENGINEER OR ARCHITECT SHALL PREPARE SITE SPECIFIC DOCUMENTS FOR USE WITH THIS DOCUMENT.



HERMES F. NORERO, P.E.  
FLORIDA P.E. No. 73778  
BUILDING DROPS, INC.  
398 E. DANIA BEACH BLVD. # 338  
DANIA BEACH, FL 33004  
FBPE CERT. OF AUTHORIZATION No. 29578

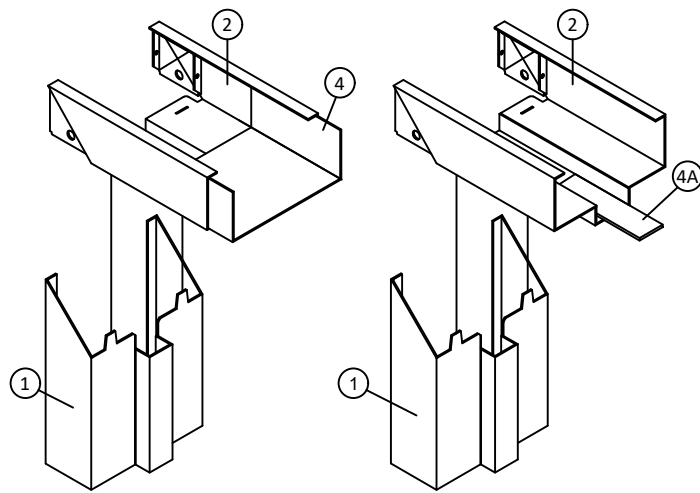
|          |          |              |
|----------|----------|--------------|
| DATE:    | 03.17.17 |              |
| DWG. BY: | JLR      | CHK. BY: HFN |
| SCALE:   | NTS      |              |
| DWG. #:  | RDF016   |              |

SHEET:  
**8**  
OF 11



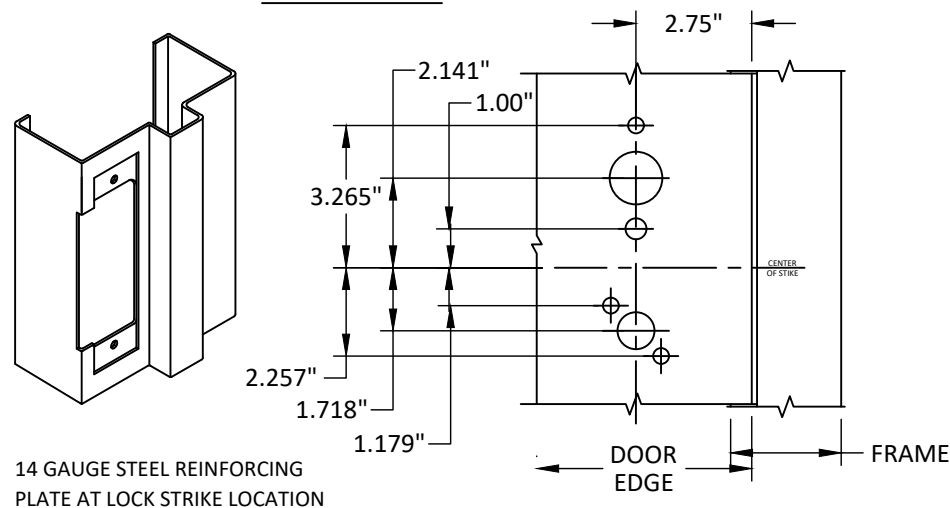
3/30/2022 4:58 PM  
s:\projects\republic doors\tdl-22-0116 rdi submittal - dr551 - dr999 - dr1000 - dr1001 - dr1002\dwgs\1. dl418 steel flush outswing door (id 7115)\rdf016.dwg

\*FASTENERS SHOWN ARE TYPICAL/MINIMUM

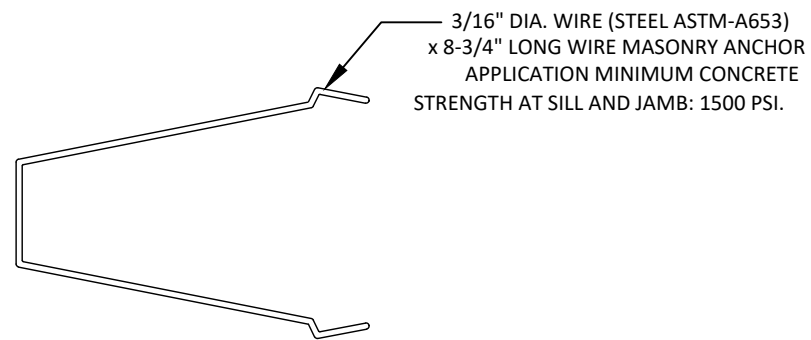


16 GAGE 5 3/4" DEPTH FRAME WITH MITERED CORNER CONSTRUCTION WITH FOUR INTEGRAL TABS WHICH INTERLOCK THE JAMBS TO THE HEAD, WITH REINFORCEMENT, PART # 4 OR 4A

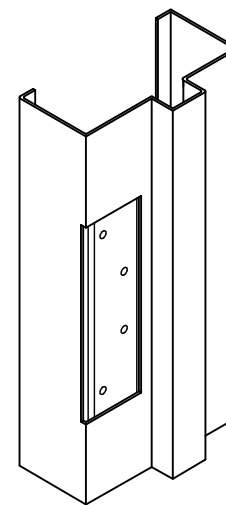
**DETAIL Y**



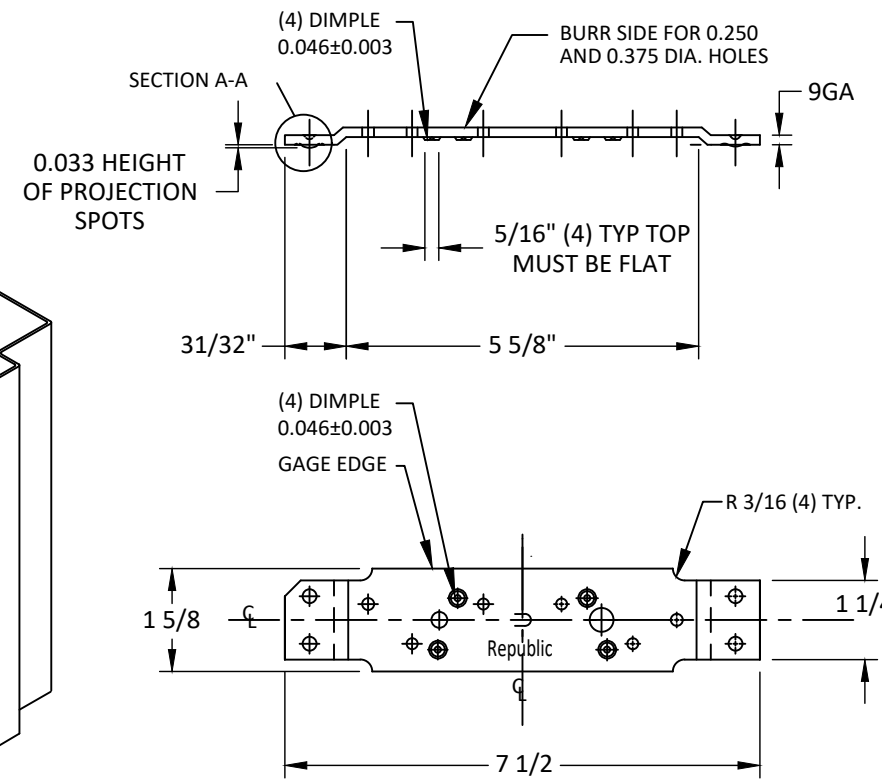
**DETAIL X**  
LOCK REINFORCEMENT



**WIRE ANCHOR DETAIL**



**DETAIL Z**  
HINGE REINFORCEMENT



**Republic**  
doors-frames

155 REPUBLIC DRIVE  
MCKENZIE, TN 38201  
PH: (800) 799-3667 FX: (731) 352-2556

TITLE:  
DL 418 STEEL FLUSH DOOR  
CORNER ASSEMBLIES & COMPONENTS

PREPARED BY:  
BUILDING DROPS, INC.  
398 E. DANIA BEACH BLVD., STE. 338  
DANIA BEACH, FL 33004  
PH: (954) 399-8478  
FAX: (954) 744-4738  
WEB: www.buildingdrops.com



| REMARKS         | BY | DATE    |
|-----------------|----|---------|
| 2018 IBC UPDATE | CA | 3.28.22 |
|                 |    |         |
|                 |    |         |

THE INSTALLATION DETAILS DESCRIBED HEREIN ARE GENERIC AND MAY NOT REFLECT ACTUAL CONDITIONS FOR A SPECIFIC SITE. IF SITE CONDITIONS CAUSE INSTALLATION TO DEVIATE FROM THE REQUIREMENTS DETAILED HEREIN, A LICENSED ENGINEER OR ARCHITECT SHALL PREPARE SITE SPECIFIC DOCUMENTS FOR USE WITH THIS DOCUMENT.

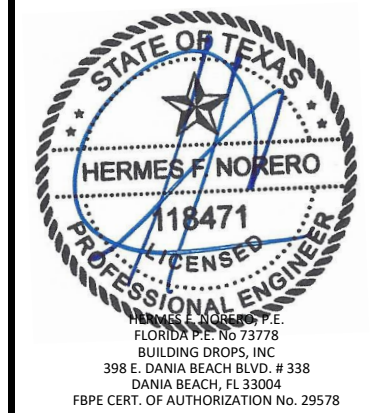


TABLE 2: CONCRETE ANCHORS AT JAMBS

| Anchor                           | Concrete Min. 3000 psi |                      | CMU Min. 2000 Psi |                      |
|----------------------------------|------------------------|----------------------|-------------------|----------------------|
|                                  | Embedment (in)         | Min. Edge Dist. (in) | Embedment (in)    | Min. Edge Dist. (in) |
| 3/8" ITW/Redhead Dynabolt        | 1.5                    | 2.25                 | 1.875             | 2.25                 |
| 3/8" FH Powers Power-Bolt        | 2                      | 2.5                  | 1.875             | 2.5                  |
| 3/8" FH Powers Lok Bolt AS       | 1.625                  | 2.5                  | 1.25              | 2.5                  |
| 3/8" Hilti HLC-FPH Sleeve Anchor | 1.25                   | 2.25                 | 1.25              | 2.5                  |

DATE: 03.17.17

DWG. BY: JLR

CHK. BY: HFN

SCALE: NTS

DWG. #: RDF016

SHEET:

9

OF 11

3/30/2022 4:58 PM  
s:\projects\republic doors\dl-22-0116 rdi submittal - dr551, dr999, dr1000, dr1001, dr1002\dwg\1. dl418 steel flush outswing door (dl 715)\rdf016.dwg

**BILL OF MATERIALS**

| ITEM NO. | DESCRIPTION   | MATERIAL      | MANUFACTURER           |
|----------|---|---------------|------------------------|
| 1        | 96" X 5.75" DOUBLE SWING JAMB PAIR OR SINGLE JAMB                               | 0.053" STEEL  | REPUBLIC DOOR & FRAMES |
| 2        | 96" X 5.75" FACE DOUBLE OPENING HEADER  | 0.053" STEEL  | REPUBLIC DOOR & FRAMES |
| 2A       | 52" X 5.75" SINGLE DOOR HEADER  | 0.053" STEEL  | REPUBLIC DOOR & FRAMES |
| 3        | HINGE REINFORCING FRAME   | 0.132" STEEL  | REPUBLIC DOOR & FRAMES |
| 4        | HEADER SLEEVE REINFORCEMENT 14 GA. (.072") X 5.6875" X FULL LENGTH HEADER       | 0.072" STEEL  | REPUBLIC DOOR & FRAMES |
| 4A       | HEADER FLAT STOCK REINFORCEMENT 10 GA. (.125") X 1.5" X FULL LENGTH HEADER      | 0.125" STEEL  | REPUBLIC DOOR & FRAMES |
| 5        | BASE ANCHOR 1.875" X 1.875"   | 0.053" STEEL  | REPUBLIC DOOR & FRAMES |
| 6A       | TOP CHANNELS 16 GA. X 1.677" X 0.62" CHANNEL FULL LENGTH DOOR PANEL WIDTH       | 0.053" STEEL  | REPUBLIC DOOR & FRAMES |
| 6B       | BOTTOM CHANNELS 16 GA. X 1.677" X 0.62" CHANNEL FULL LENGTH OF DOOR PANEL WIDTH | 0.053" STEEL  | REPUBLIC DOOR & FRAMES |
| 6C       | HINGE CHANNELS 16 GA. X 1.677" X 0.62" CHANNEL FULL DOOR HEIGHT                 | 0.053" STEEL  | REPUBLIC DOOR & FRAMES |
| 6D       | LOCK CHANNELS 16 GA. X 1.677" X 0.62" CHANNEL FULL DOOR HEIGHT                  | 0.053" STEEL  | REPUBLIC DOOR & FRAMES |
| 7        | NOT USED  |               |                        |
| 8A       | DORMA ML9953D OR SCHLAGE L900 MORTISE LOCK W/ DEADBOLT                          | STEEL         | DORMA                  |
| 8B       | DORMA CL753D OR SCHLAGE ND SERIES STANDARD LATCH                                | STEEL         | DORMA                  |
| 8C       | DORMA DB660D DEADLOCK   | STEEL         | DORMA                  |
| 8D       | HCF SURFACE VERTICAL ROD W/ PANIC DEVICE 2200                                   | STEEL         | PRECISION              |
| 8E       | IVES MODEL 360 SURFACE BOLTS  | STEEL         | IVES                   |
| 8F       | HCF RIM PANIC DEVICE 2100 (W/ HC822 MULLION DOUBLE DOOR)                        | STEEL         | PRECISION              |
| 8G       | DORMA 340 STRIKE PLATE  | STEEL         | DORMA                  |
| 8H       | DORMA 426 STRIKE PLATE  | STEEL         | DORMA                  |
| 8I       | 4 7/8" ASA STRIKE   | STEEL         | DORMA                  |
| 8J       | STRIKE 5001 118   | STEEL         | DORMA                  |
| 8K       | STRIKE S300   | STEEL         | PRECISION              |
| 9A       | CONTINUOUS HARDWARE REINF. 14 GA. (0.072") 1.677" X 6" X (DOOR HEIGHT - 11")    | 0.072" STEEL  | REPUBLIC DOOR & FRAMES |
| 9B       | EXIT DEVICE REINFORCEMENT 14 GA. (0.072") 1.677" X 5.313" X 14"                 | 0.072" STEEL  | REPUBLIC DOOR & FRAMES |
| 9D       | FRAME STRIKE REINFORCEMENT PLATE 14 GA. ANSI/ASA 4.875                          | 0.072" STEEL  | REPUBLIC DOOR & FRAMES |
| 9E       | CLOSER REINFORCEMENT 14 GA. (0.072") X 1.677" X 6" X 18"                        | 0.072" STEEL  | REPUBLIC DOOR & FRAMES |
| 10       | DOOR SKINS FY=43.9 KSI MIN.   | 0.045" STEEL  | REPUBLIC DOOR & FRAMES |
| 11       | PEMKO 2001 THRESHOLD  | ALUMINUM      | PEMKO                  |
| 12       | DOOR HINGE REINFORCEMENT 9 GA. (0.132") X 7.5" X 1.625"                         | 0.132" STEEL  | REPUBLIC DOOR & FRAMES |
| 13       | ANCHORS (SEE SHEET 5)<br>3/8" LAG BOLT, 3/8" DYNABOLT ITW/RED HEAD & 1/4" ITW   | VARIES        | ITW / RED HEAD         |
| 14       | PEMKO S88 WEATHERSTRIP  | VINYL BULB    | PEMKO                  |
| 15       | ALL PURPOSE SILICONE CAULK  | SILICONE      |                        |
| 16       | INACTIVE LEAF ASTRAGAL 14 GA. (0.072") X 1.7" X FULL DOOR HEIGHT                | 0.072" STEEL  | REPUBLIC DOOR & FRAMES |
| 17       | CUT OUT REINFORCEMENT   | 0.053" STEEL  | REPUBLIC DOOR & FRAMES |
| 18       | 4 1/2" X 4 1/2" X .134" THICK BALL BEARING TEMPLATE BUTT HINGES                 |               | S. PARKER              |
| 19       | HONEYCOMB CORE TYPE 99-0-3/4 (STEEL STIFF., POLY OPT.)                          |               | REPUBLIC DOOR & FRAMES |
| 20       | SURFACE BOLT ANGLE REINFORCEMENT 7 GAUGE  | 0.175" STEEL  | ROCKWOOD               |
| 21       | REESE 353A ALUMINUM DRIP CAP  | ALLOY 6063-T5 | REESE                  |
| 22       | MORTISE LOCK REINFORCEMENT 14 GAUGE X 1.677" X 5.313" X 14"                     | 0.072" STEEL  | REPUBLIC DOOR & FRAMES |
| 23       | DEAD LOCK REINFORCEMENT 16 GAUGE X 3" X 3"                                      | 0.053" STEEL  | REPUBLIC DOOR & FRAMES |
| 24       | CYLINDRICAL LOCK REINFORCEMENT 16 GAUGE X 3" X 2.5"                             | 0.053" STEEL  | REPUBLIC DOOR & FRAMES |
| 25       | MULLION 2" X 3" PRECISION HC822 (A-500 GRADE B)                                 | STEEL         | PRECISION              |
| 26       | MULLION REINFORCEMENT 1.5" X 2.5" (FULL LENGTH)                                 | STEEL         | PRECISION              |

\*FASTENERS SHOWN ARE TYPICAL/MINIMUM



155 REPUBLIC DRIVE  
MCKENZIE, TN 38201  
PH: (800) 799-3667 FX: (731) 352-2556

TITLE: DL 418 STEEL FLUSH DOOR  
BILL OF MATERIALS

PREPARED BY: **BUILDING DROPS, INC.**  
398 E. DANIA BEACH BLVD., STE. 338  
DANIA BEACH, FL 33004  
PH: (954) 399-8478  
FAX: (954) 744-4738  
WEB: www.buildingdrops.com



| REMARKS         | BY | DATE    |
|-----------------|----|---------|
| 2018 IBC UPDATE | CA | 3.28.22 |
|                 |    |         |
|                 |    |         |

THE INSTALLATION DETAILS DESCRIBED HEREIN ARE GENERIC AND MAY NOT REFLECT ACTUAL CONDITIONS FOR A SPECIFIC SITE. IF SITE CONDITIONS CAUSE INSTALLATION TO DEVIATE FROM THE REQUIREMENTS DETAILED HEREIN, A LICENSED ENGINEER OR ARCHITECT SHALL PREPARE SITE SPECIFIC DOCUMENTS FOR USE WITH THIS DOCUMENT.



HERMES F. NORERO, P.E.  
FLORIDA P.E. No. 73778  
BUILDING DROPS, INC.  
398 E. DANIA BEACH BLVD. # 338  
DANIA BEACH, FL 33004  
FBPE CERT. OF AUTHORIZATION No. 29578

DATE: **03.17.17**

DWG. BY: **JLR**      CHK. BY: **HFN**

SCALE: **NTS**

DWG. #: **RDF016**

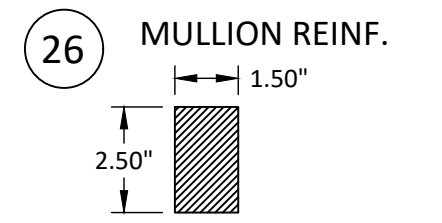
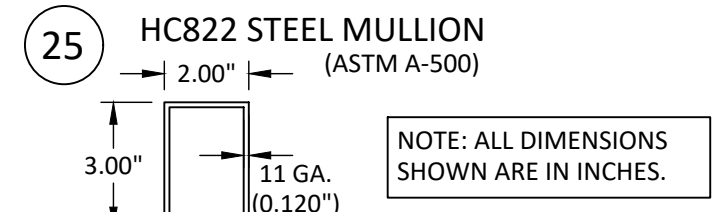
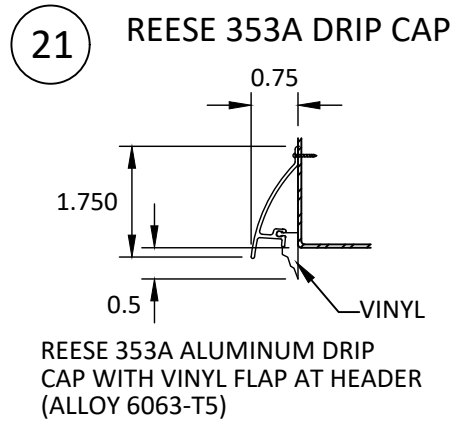
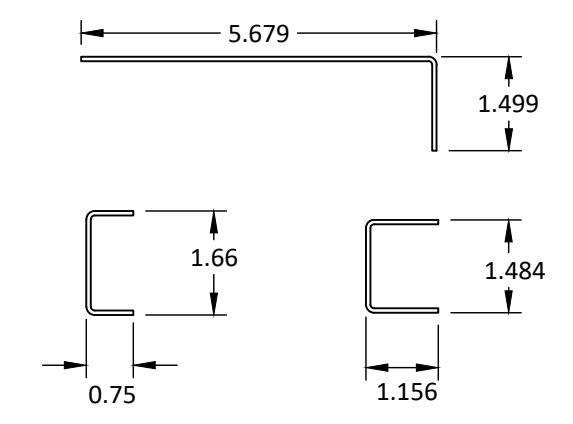
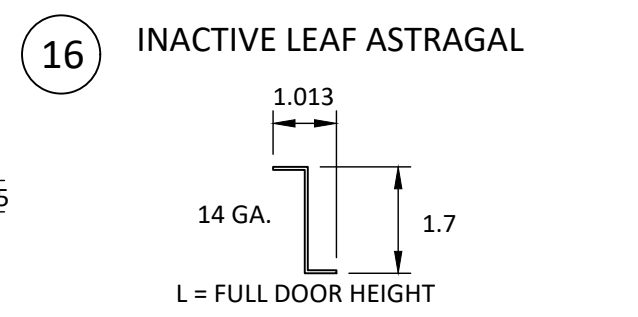
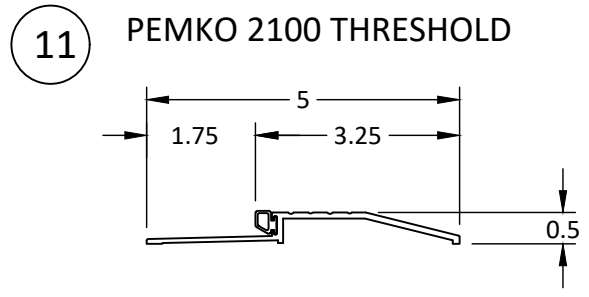
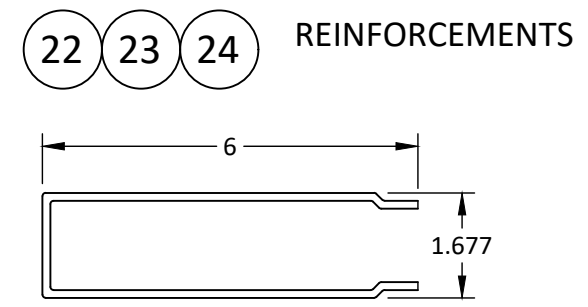
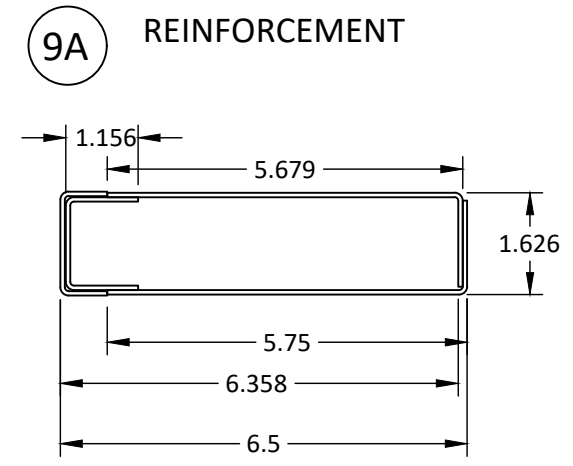
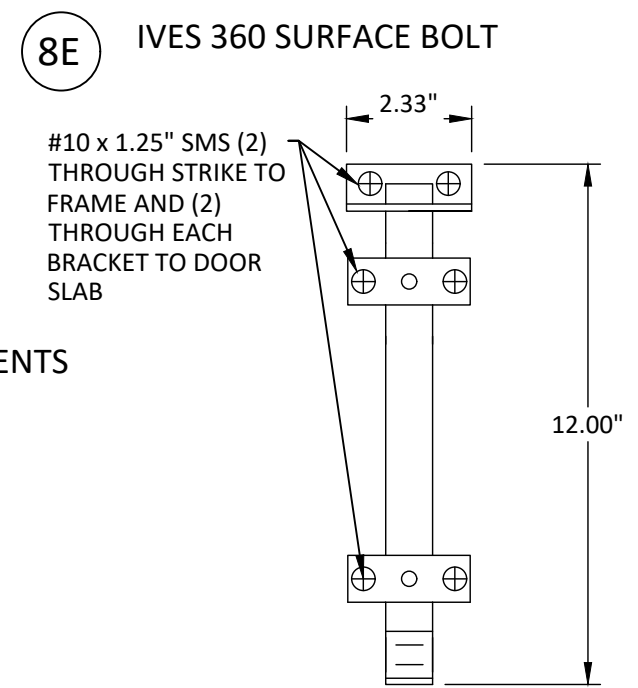
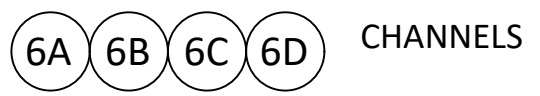
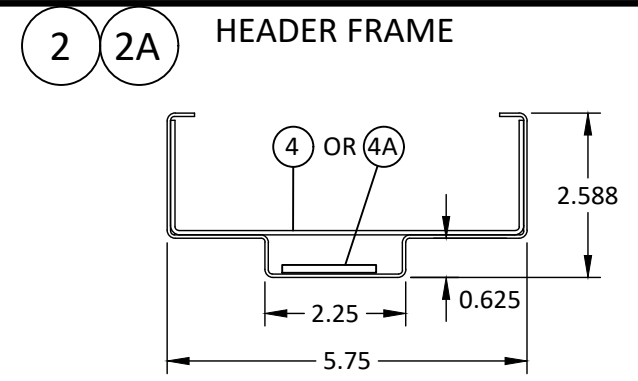
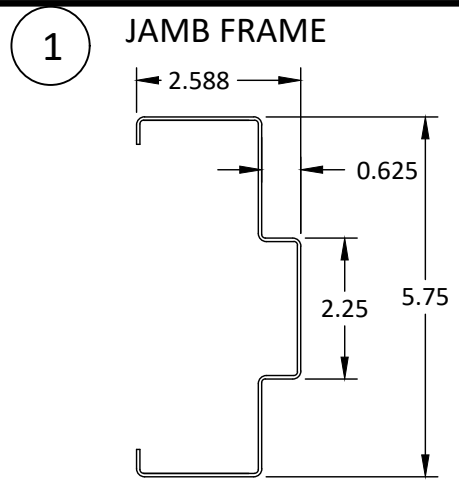
SHEET:

**10**

OF 11

3/30/2022 4:58 PM  
s:\projects\republic doors\dl-22-0116 rdi submittal - dr551 - dr999 - dr1000 - dr1001 - dr1002\dwg\1. dl418 steel flush outswing door (id 7115)\rdf016.dwg

\*FASTENERS SHOWN ARE TYPICAL/MINIMUM



**Republic**  
doors - frames

155 REPUBLIC DRIVE  
MCKENZIE, TN 38201  
PH: (800) 799-3642 FX: (731) 352-2556

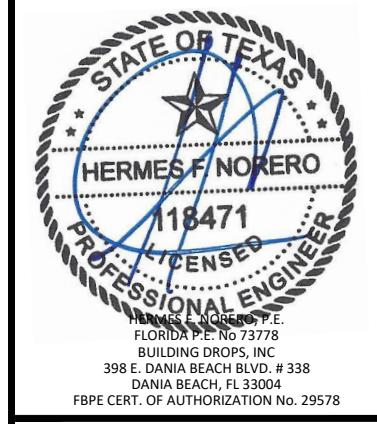
TITLE: DL 418 STEEL FLUSH DOOR

COMPONENTS

PREPARED BY: BUILDING DROPS, INC.  
398 E. DANIA BEACH BLVD., STE. 338  
DANIA BEACH, FL 33004  
PH: (954) 399-8478  
FAX: (954) 744-4738  
WEB: www.buildingdrops.com

| REMARKS         | BY | DATE    |
|-----------------|----|---------|
| 2018 IBC UPDATE | CA | 3.28.22 |
|                 |    |         |
|                 |    |         |

THE INSTALLATION DETAILS DESCRIBED HEREIN ARE GENERIC AND MAY NOT REFLECT ACTUAL CONDITIONS FOR A SPECIFIC SITE. IF SITE CONDITIONS CAUSE INSTALLATION TO DEVIATE FROM THE REQUIREMENTS DETAILED HEREIN, A LICENSED ENGINEER OR ARCHITECT SHALL PREPARE SITE SPECIFIC DOCUMENTS FOR USE WITH THIS DOCUMENT.



DATE: 03.17.17

DWG. BY: JLR      CHK. BY: HFN

SCALE: NTS

DWG. #: RDF016

SHEET: 11 OF 11