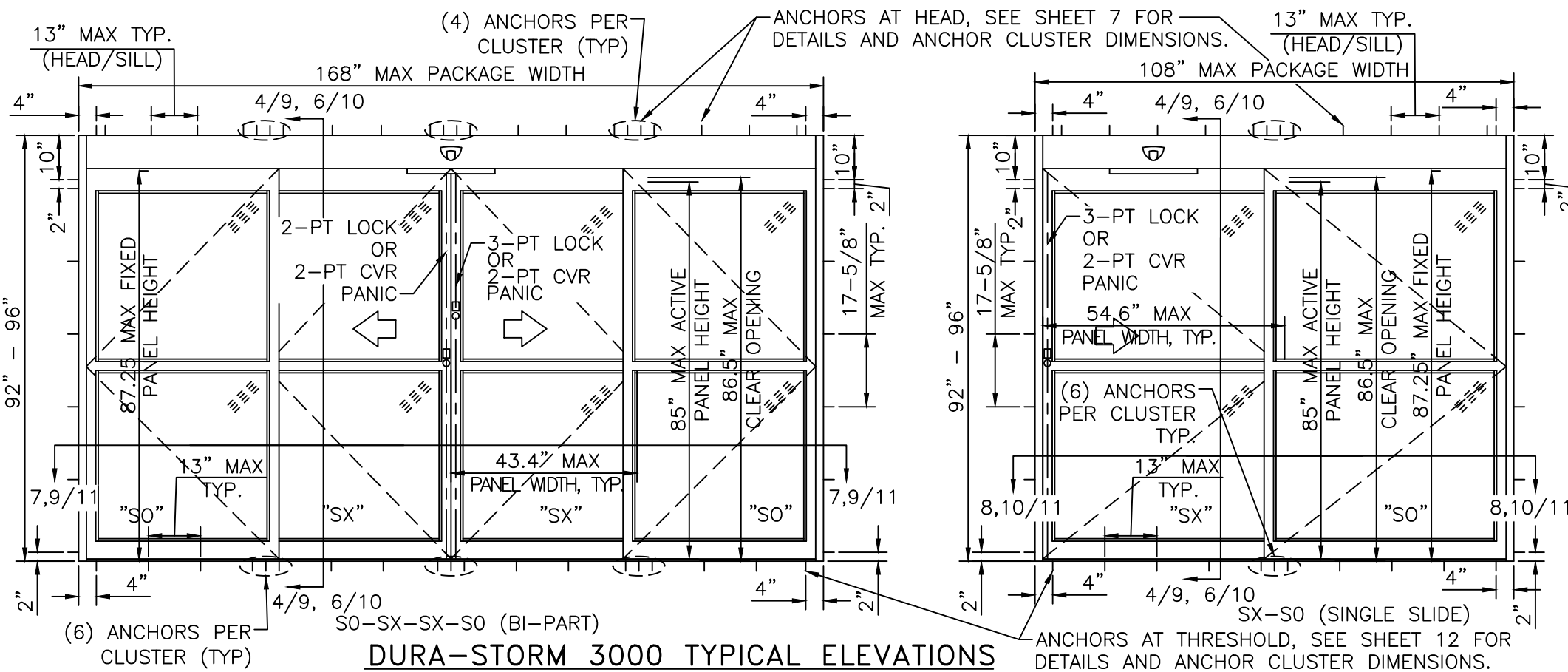
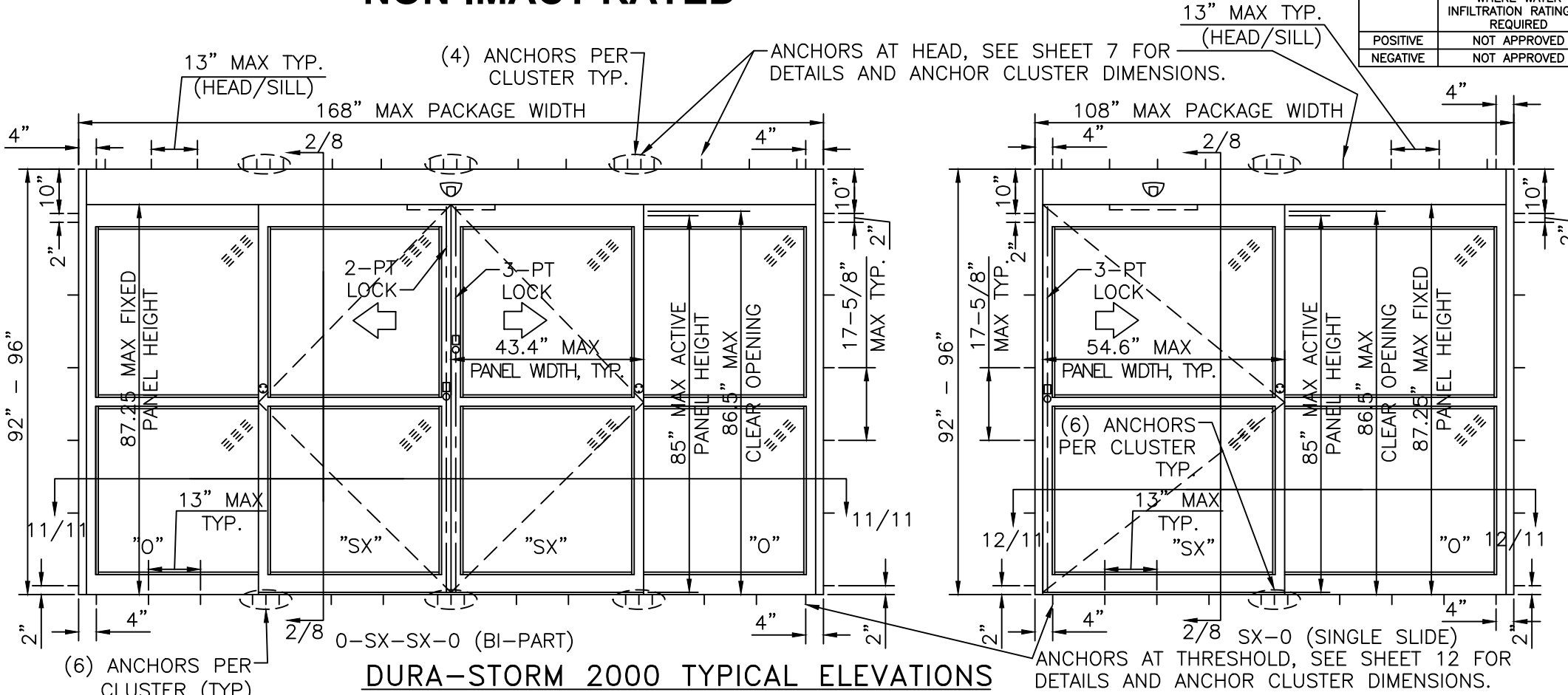


DURA-STORM SERIES 2000/3000, TYPICAL ELEVATIONS

NON-IMPACT RATED



DESIGN RATINGS		
MISSILE IMPACT RATING		
<input checked="" type="checkbox"/> NON-IMPACT RESISTANT		
DESIGN PRESSURE RATING (PSF[Pa])		
	WHERE WATER INFILTRATION RATING IS REQUIRED	WHERE WATER INFILTRATION RATING IS NOT REQUIRED
POSITIVE	NOT APPROVED	55 PSF
NEGATIVE	NOT APPROVED	55 PSF

Frank Bennardo
PE# 96064 CA# F-11383

AUGUST 10, 2022

- GENERAL NOTES**
- DOORS HAVE BEEN TESTED & DESIGNED IN ACCORDANCE WITH THE REQUIREMENTS OF THE INTERNATIONAL BUILDING CODE EDITION (2018) HIGH VELOCITY HURRICANE ZONE (HVHZ) AND MIAMI-DADE COUNTY PROTOCOLS TAS 202 FOR UNIFORM STATIC AIR PRESSURE AS A NON-IMPACT RESISTANT SYSTEM. APPROVED SHUTTERS, COMPLYING WITH IBC REQUIREMENTS, ARE REQUIRED AS APPLICABLE.
 - PERMIT HOLDER SHALL VERIFY THE ADEQUACY OF THE EXISTING STRUCTURE TO WITHSTAND ADDITIONAL IMPOSED LOADS. 1X OR 2X WOOD BUCKS BY OTHERS SHALL BE ANCHORED PROPERLY TO TRANSFER LOADS TO THE EXISTING STRUCTURE.
 - NO INCREASE IN ALLOWABLE STRESS HAS BEEN USED IN THE DESIGN OF THESE PRODUCTS. WIND LOAD DURATION FACTOR $C_d = 1.6$ WAS USED FOR WOOD ANCHOR DESIGN.
 - POSITIVE AND NEGATIVE DESIGN PRESSURES CALCULATED FOR USE WITH THIS SYSTEM SHALL BE DETERMINED PER SEPARATE ENGINEERING IN ACCORDANCE WITH THE GOVERNING CODE. PRESSURE REQUIREMENTS AS DETERMINED IN ACCORDANCE WITH ASCE 7 AND CHAPTER 1609 OF THE FLORIDA BUILDING CODE SHALL BE LESS THAN OR EQUAL TO THE POSITIVE OR NEGATIVE DESIGN PRESSURE CAPACITY VALUES LISTED HEREIN FOR ANY ASSEMBLY AS SHOWN.
 - DESIGN PRESSURES NOTED HEREIN ARE BASED ON MAXIMUM TESTED PRESSURES DIVIDED BY A 1.5 SAFETY FACTOR.
 - DOORS DETAILED HEREIN HAVE BEEN DESIGNED AND TESTED TO THE MAXIMUM SPANS AND LOADS SHOWN ON THESE DRAWINGS. REFERENCE FENESTRATION TESTING LAB REPORTS 6803 & 7247.
 - ANCHORS SHALL BE INSTALLED PER MANUFACTURER'S SPECIFICATIONS, SPACED AS NOTED HEREIN. MINIMUM EMBEDMENT AND EDGE DISTANCE EXCLUDES STUCCO, FOAM, BRICK, AND OTHER WALL FINISHES.
 - WHERE EXISTING STRUCTURE IS WOOD FRAMING, EXISTING CONDITIONS MAY VARY. FIELD VERIFY THAT FASTENERS ARE INTO ADEQUATE WOOD FRAMING MEMBERS, NOT INTO PLYWOOD.
 - WOOD HOST STRUCTURE SHALL BE "SOUTHERN PINE" $G=0.55$ OR GREATER DENSITY.
 - WHERE EXISTING STRUCTURE IS WOOD FRAMING, EXISTING CONDITIONS MAY VARY. FIELD VERIFY THAT FASTENERS ARE INTO ADEQUATE WOOD FRAMING MEMBERS, NOT INTO PLYWOOD.
 - THE SYSTEM DETAILED HEREIN IS GENERIC AND DOES NOT PROVIDE INFORMATION FOR A SPECIFIC SITE. FOR SITE CONDITIONS DIFFERENT FROM THE CONDITIONS DETAILED HEREIN, A LICENSED ENGINEER OR REGISTERED ARCHITECT SHALL PREPARE SITE SPECIFIC DOCUMENTS FOR USE IN CONJUNCTION WITH THIS DOCUMENT FOR INSTALLATIONS OUTSIDE THE HVHZ; WITHIN THE HVHZ, A ONE-TIME APPROVAL FROM MIAMI-DADE COUNTY SHALL BE OBTAINED.
 - ALL BOLTS AND WASHERS SHALL BE ZINC COATED, GALVANIZED, OR STAINLESS STEEL WITH A MINIMUM TENSILE STRENGTH OF 60 KSI, EXCEPT INSTALLATION ANCHORS.
 - ALL SINGLE SLIDE ENTRANCES ARE SHOWN "RIGHT HAND"; "LEFT HAND" IS MIRROR IMAGE.

- SYSTEM NOTES**
- ALL ALUMINUM PARTS SHALL BE 6063-T6 ALUMINUM ALLOY AND TEMPER, UNLESS OTHERWISE NOTED.
 - GLAZING NOT IMPACT RATED. SEE GLAZING DETAILS SHEET 16.
 - CORNER PANEL CONSTRUCTION: PANEL CORNERS ARE BUTT JOINED, SECURED WITH FOUR (4) FULL WIDTH 5/16" THREADED TIE RODS AT TOP RAIL, AND BOTTOM RAIL. ALL JOINTS ARE WELDED. EXCEPTION: INTERMEDIATE HORIZONTAL MUNTIN BAR IS SECURED BY APPROVED CLIPS (ITEM #79, SHEET 15, DETAIL V).
 - THE GLAZING MATERIAL IN BOTH FIXED AND SLIDING PANELS OF ALL SLIDING DOORS MUST COMPLY WITH THE REQUIREMENTS IN THE PERFORMANCE SPECIFICATIONS AND METHODS OF TEST FOR SAFETY GLAZING MATERIALS USED IN BUILDINGS, PER FBC REQUIREMENTS.
 - CVR = CONCEALED VERTICAL ROD.

ENGINEERING EXPRESS

POSTAL ADDRESS:
401 W. ATLANTIC AVE. R10 #219
DELRAY BEACH, FL 33444
ENGINEERINGEXPRESS.COM

65 SCOTT SWAMP ROAD
FARMINGTON, CT 06032

STANLEY Security

ACCESS TECHNOLOGIES

SERIES "DURA-STORM 2000/3000" AUTO SGD
BI-PARTING/SINGLE SLIDE (NI)
TDI-EVALUATION REPORT

REMARKS	DATE
INITIALS	07/05/22
DRWN	CHKD
SSQ	RS

VISIT EALC.IO/33204 SCAN HERE:

FOR HELPFUL RESOURCES, SITE SPECIFIC JOB ORDERING & MORE INFORMATION ABOUT THIS PRODUCT & RELATED SERVICES

22-53510

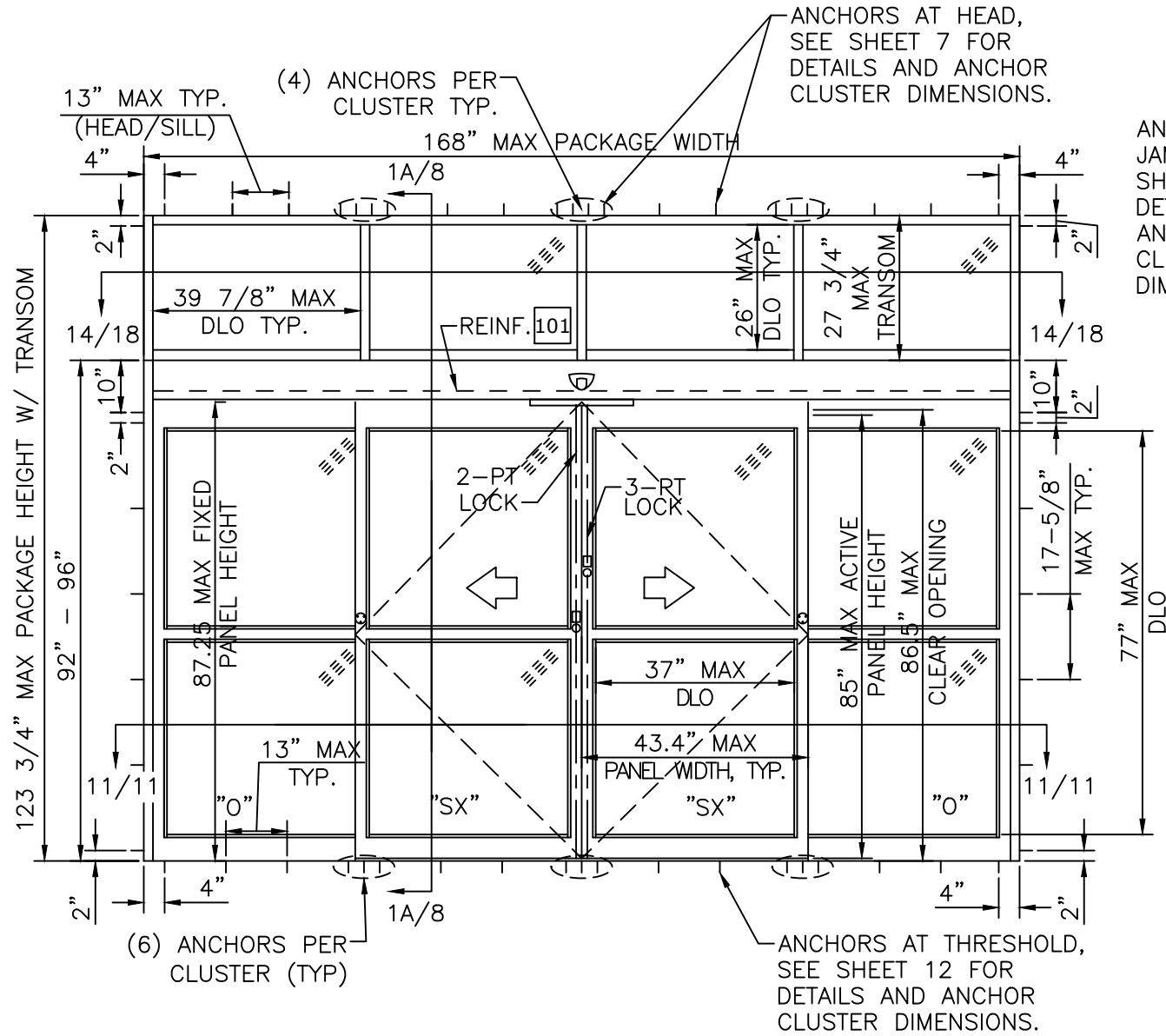
SCALE: NTS UNLESS NOTED

01 OF 19

c:\users\sam\engineering\express\production - documents\projects\22-53510 update tdi - 18-6976a - noa 20-1216.25, 20-33204\work\drawings & cad\22-53510 durastorm 3000 (ni) - tdi.dwg

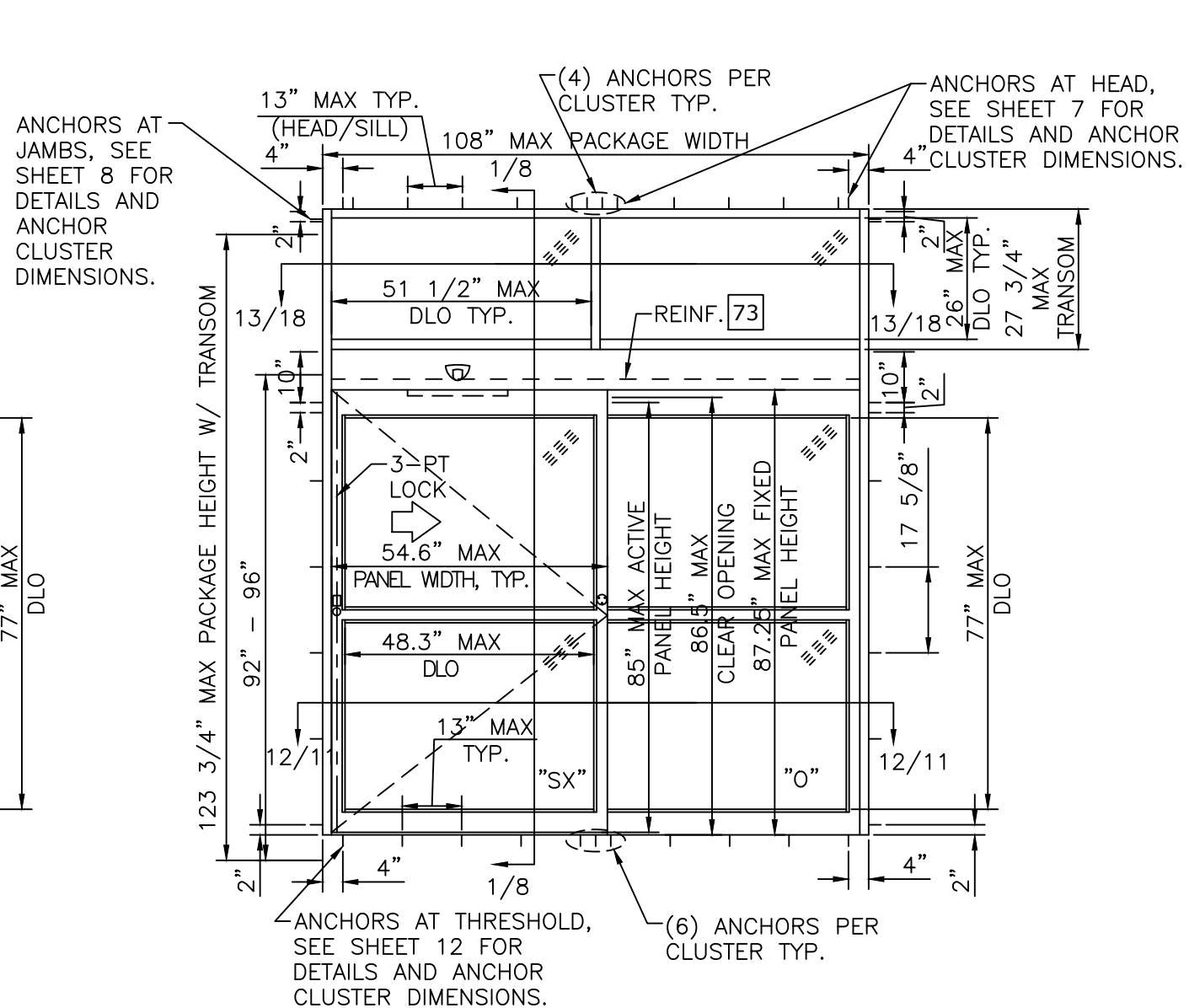
DURA-STORM SERIES 2000 W/ OPTIONAL TRANSOM, TYPICAL ELEVATIONS

Frank Bennardo
PE# 96064 CA# F-11383



DURA-STORM 2000 TYPICAL ELEVATIONS

0-SX-SX-0 (BI-PART)



DURA-STORM 2000 TYPICAL ELEVATIONS

SX-0 (SINGLE SLIDE)

NOTES

1. MAX DLO AS SHOWN.
- 1.1. BI-PARTING PANEL: 37" W X 77" H; TRANSOMS: 39 7/8" W X 26" H.
- 1.2. SINGLE SLIDE PANEL: 48 1/4" W X 77" H; TRANSOMS: 51 1/2" W X 26" H.
2. 5-POINT LOCKING STANDARD (3-PT ACTIVE & 2-PT). SEE SHEET 17.
3. PRODUCT SHALL BE MANUFACTURED AND INSTALLED IN ACCORDANCE WITH PRODUCT APPROVALS.
4. SEE SHEETS 7, 8, 11 AND 12 FOR REQUIRED ANCHORAGE.
5. SEE SHEET 16 FOR GLAZING DETAILS.



POSTAL ADDRESS:
401 W. ATLANTIC AVE. R10 #219
DELRAY BEACH, FL 33444
ENGINEERINGEXPRESS.COM

65 SCOTT SWAMP ROAD
FARMINGTON, CT 06032



ACCESS TECHNOLOGIES
SERIES "DURA-STORM 2000/3000" AUTO SGD
BI-PARTING/SINGLE SLIDE (NI)
TDI-EVALUATION REPORT

DRWN	CHKD	DATE
SSQ	RS	07/05/22

COPYRIGHT ENGINEERING EXPRESS®

22-53510

SCALE: NTS UNLESS NOTED

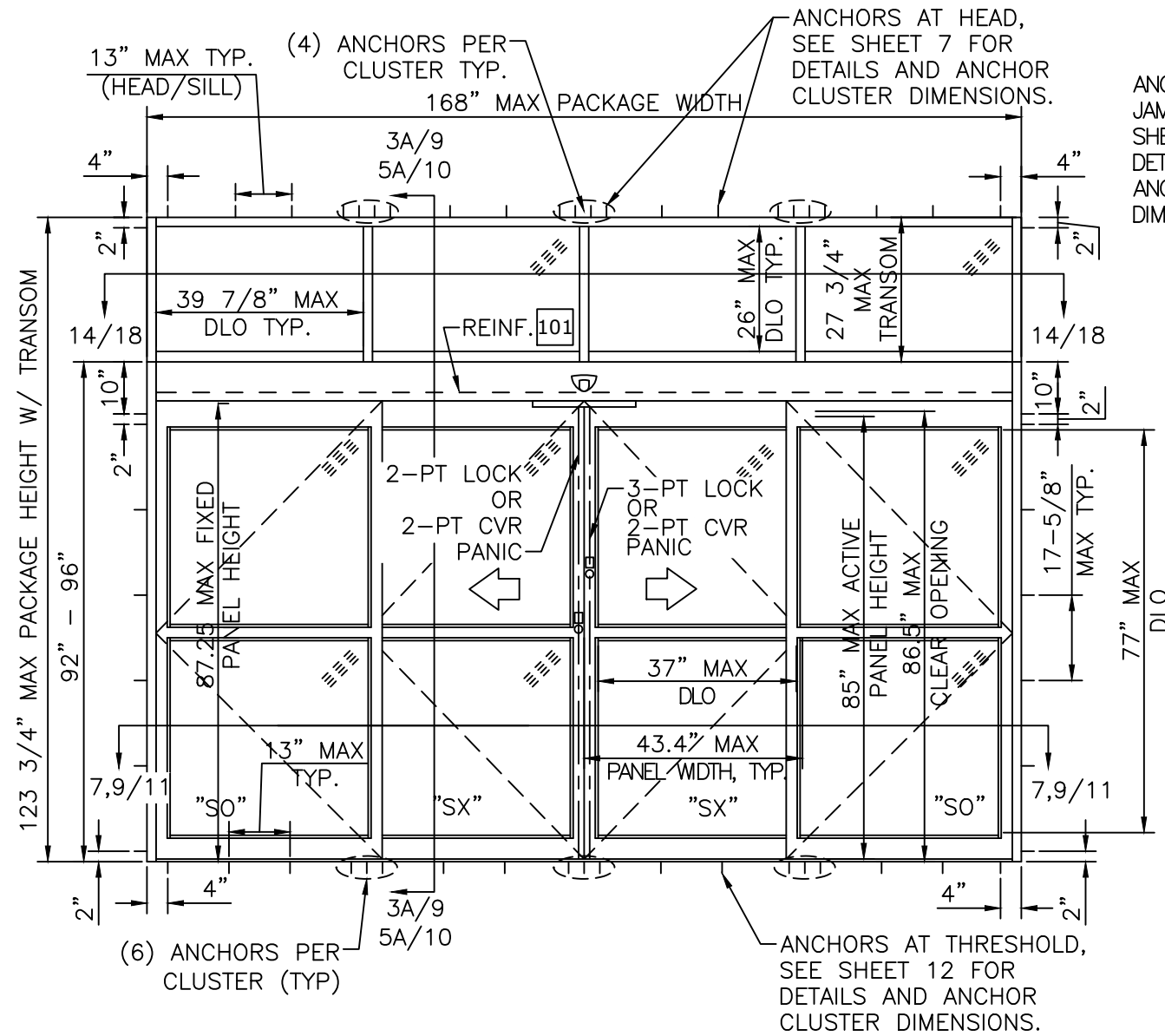
02 OF 19

DURA-STORM SERIES 3000 W/ OPTIONAL TRANSOM, TYPICAL ELEVATIONS

Frank Bennardo
PE# 96064 CA# F-11383

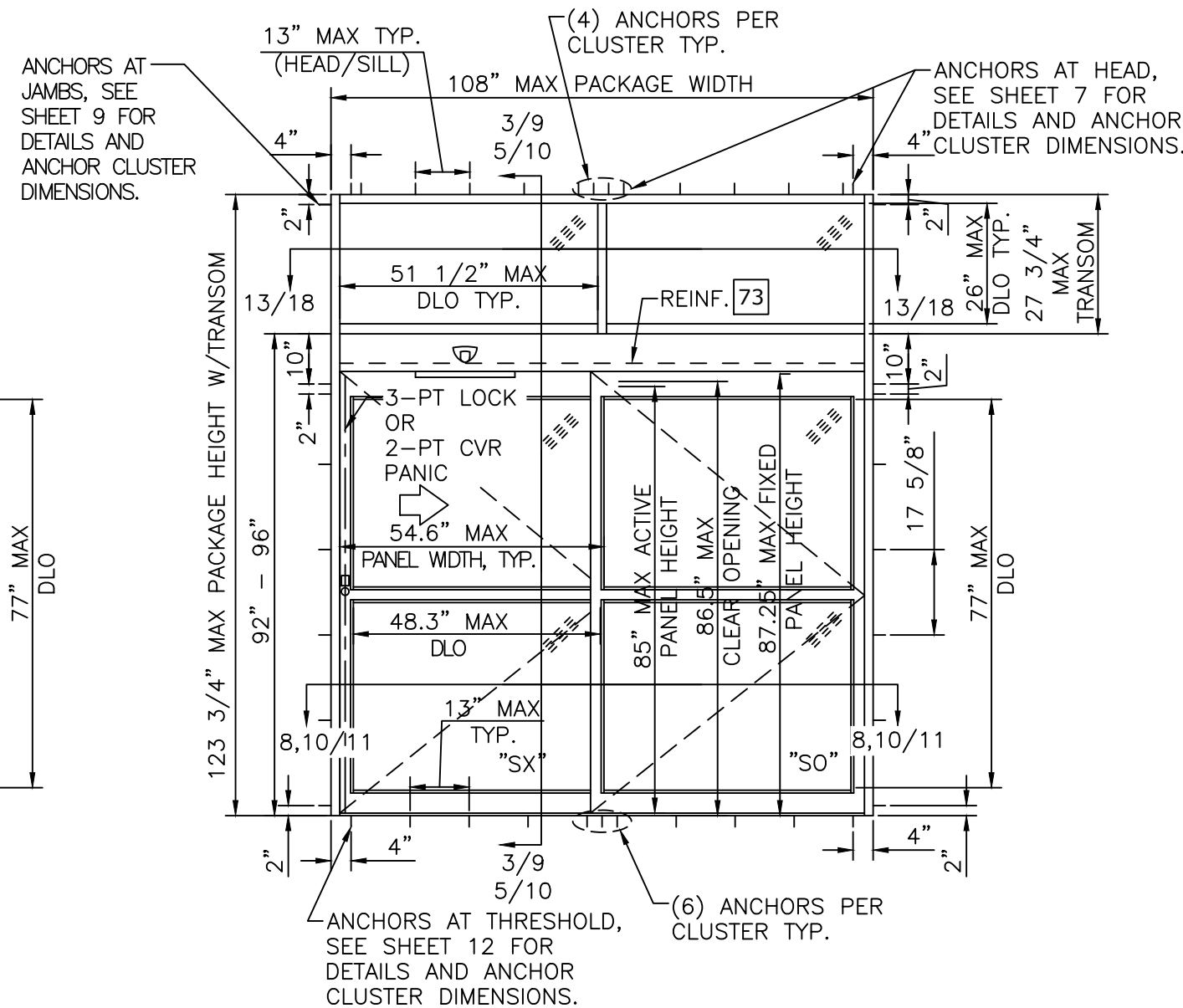


08/10/2022



DURA-STORM 3000 TYPICAL ELEVATIONS

SO-SX-SX-SO (BI-PART)



DURA-STORM 3000 TYPICAL ELEVATIONS

SX-SO (SINGLE SLIDE)

NOTES

1. MAX DLO AS SHOWN.
- 1.1. BI-PARTING PANEL: 37" W X 77" H, 36 3/4" H WITH PANIC MUNTIN; TRANSOMS: 39 7/8" W X 26" H.
- 1.2. SINGLE SLIDE PANEL: 48 1/4" W X 77" H, 36 3/4" H WITH PANIC MUNTIN; TRANSOMS: 51 1/2" W X 26" H.
3. 4-POINT CVR LOCKING WITH G86 PANIC RELEASE (2-PT CVR ACTIVE & 2-PT CVR) AND 5-POINT LOCKING (3-PT ACTIVE & 2-PT) AVAILABLE. SEE SHEET 17.
4. PRODUCT SHALL BE MANUFACTURED AND INSTALLED IN ACCORDANCE WITH PRODUCT APPROVALS.
5. SEE SHEETS 7, 9, 10, 11 AND 12 FOR REQUIRED ANCHORAGE.
6. SEE SHEET 16 FOR GLAZING DETAILS.



POSTAL ADDRESS:
401 W. ATLANTIC AVE. R10 #219
DELRAY BEACH, FL 33444
ENGINEERINGEXPRESS.COM

65 SCOTT SWAMP ROAD
FARMINGTON, CT 06032



ACCESS TECHNOLOGIES
SERIES "DURA-STORM 2000/3000" AUTO SGD
BI-PARTING/SINGLE SLIDE (NI)
TDI-EVALUATION REPORT

REMARKS	DATE
INIT ISSUE	07/05/22
DRWN	SSQ
CHKD	RS

COPYRIGHT ENGINEERING EXPRESS®

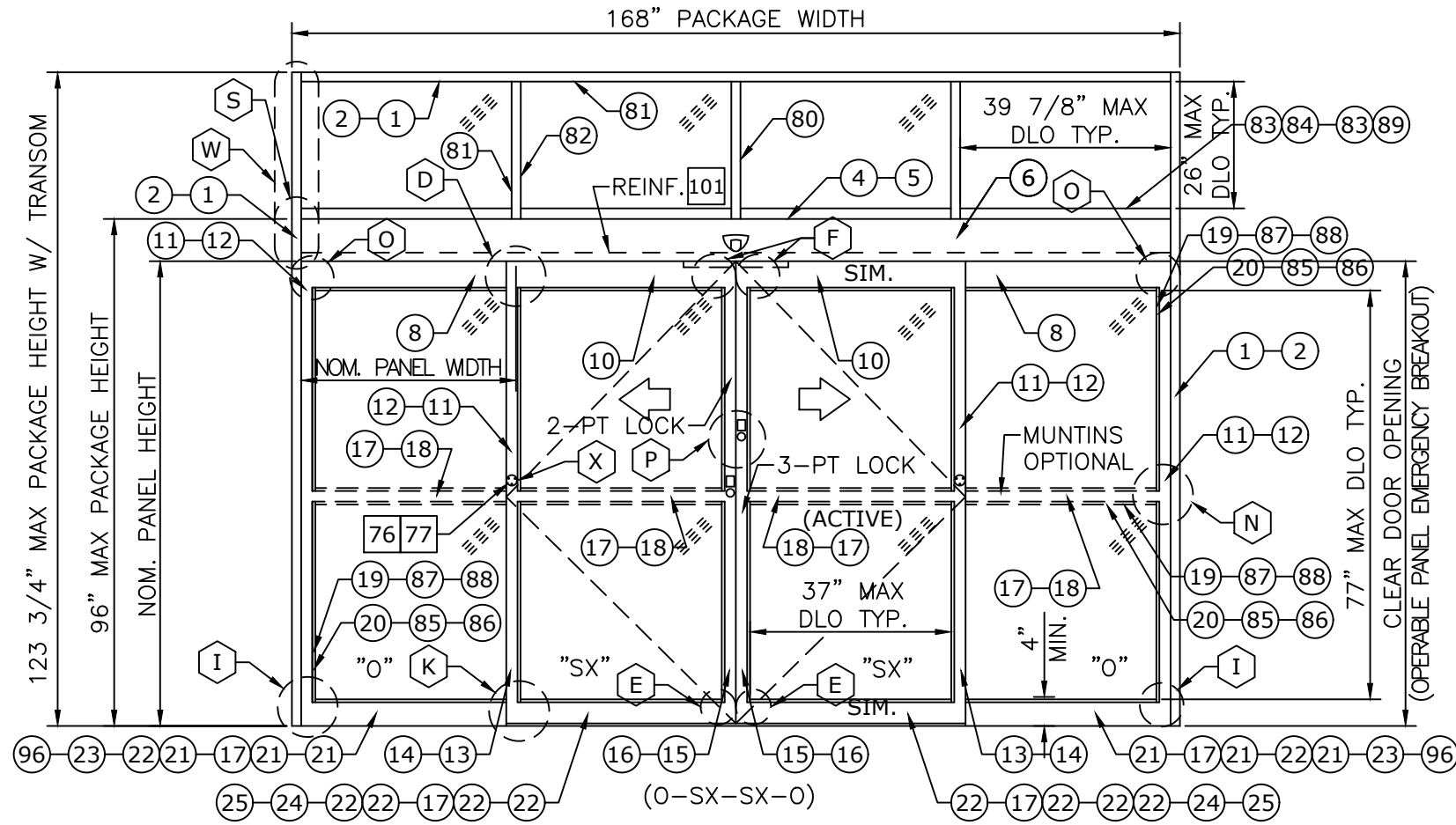
22-53510

SCALE: NTS UNLESS NOTED

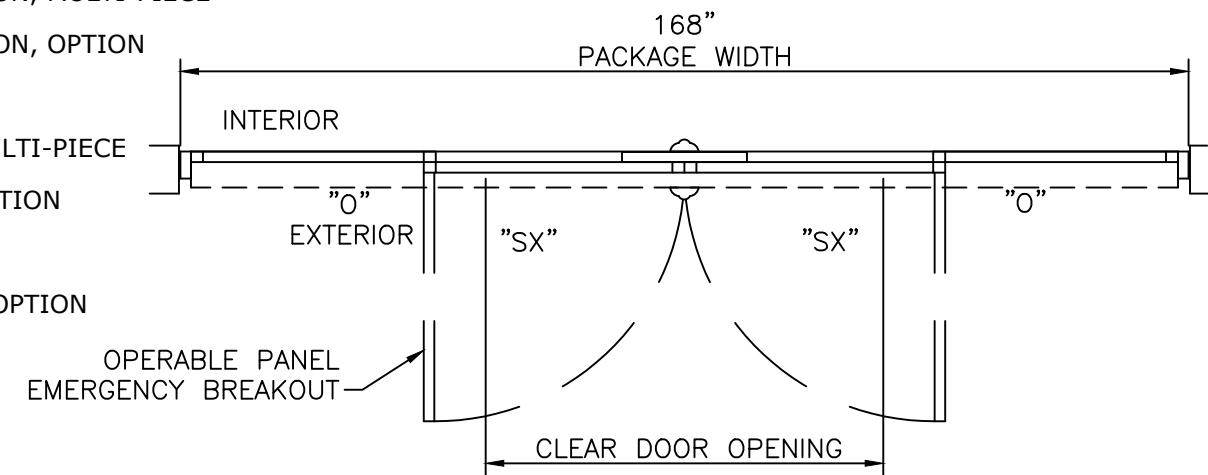
03 OF 19

DURA-STORM SERIES 2000 ELEVATION AND PLAN

Frank Bennardo
PE# 96064 CA# F-11383



EXTERIOR ELEVATION



PLAN

- ⊗ : EXTRUSION
- ⊗⊗ : EXTRUSION, MULTI-PIECE
- ⊗-⊗ : EXTRUSION, OPTION
- ⊗ : PART
- ⊗⊗ : PART, MULTI-PIECE
- ⊗-⊗ : PART, OPTION
- ⊗ : DETAIL
- ⊗-⊗ : DETAIL, OPTION

- NOTES**
- TYPICAL DOOR SHOWN. STILE, RAIL AND MUNTIN OPTIONS AVAILABLE AS INDICATED.
 - HORIZONTAL MUNTIN BAR NOT REQUIRED AS INDICATED BY DASHED LINES. MAX DLO: 37" W X 77" H AS SHOWN
 - 5-POINT LOCKING STANDARD (3-PT ACTIVE & 2-PT). SEE SHEET 17.
 - PRODUCT SHALL BE MANUFACTURED AND INSTALLED IN ACCORDANCE WITH PRODUCT APPROVALS.
 - SEE SHEETS 7, 8, 11, AND 12 FOR REQUIRED ANCHORAGE.
 - SEE SHEET 16 FOR GLAZING DETAILS.

DESIGN RATINGS		
MISSILE IMPACT RATING		
<input checked="" type="checkbox"/>	NON-IMPACT RESISTANT	
DESIGN PRESSURE RATING (PSF[Pa])		
	WHERE WATER INFILTRATION RATING IS REQUIRED	WHERE WATER INFILTRATION RATING IS NOT REQUIRED
POSITIVE	NOT APPROVED	55 PSF
NEGATIVE	NOT APPROVED	55 PSF

SERIES 2000 AVAILABLE PACKAGE WIDTH INFORMATION*						
PACKAGE WIDTH	ROUGH OPENING	STILE TYPE	NOMINAL CLEAR DOOR OPENING	NOMINAL PANEL WIDTH (SX)	NOMINAL PANEL WIDTH (O)	CAULKING ALLOWANCE
168.0"	168.5"	NARROW	70.6"	42.7"	42.7"	1/4" / SIDE
168.0"	168.5"	MEDIUM	66.3"	43.4"	43.4"	1/4" / SIDE

SERIES 2000 AVAILABLE PACKAGE HEIGHT INFORMATION*			
PACKAGE HEIGHT	ROUGH OPENING	NOMINAL CLEAR DOOR OPENING	CAULKING ALLOWANCE
92.0"	92.3"	82.5"	1/4" TOP
96.0"	96.3"	86.5"	1/4" TOP

ENGINEERING EXPRESS
POSTAL ADDRESS:
401 W. ATLANTIC AVE. R10 #219
DELRAY BEACH, FL 33444
ENGINEERINGEXPRESS.COM

65 SCOTT SWAMP ROAD
FARMINGTON, CT 06032

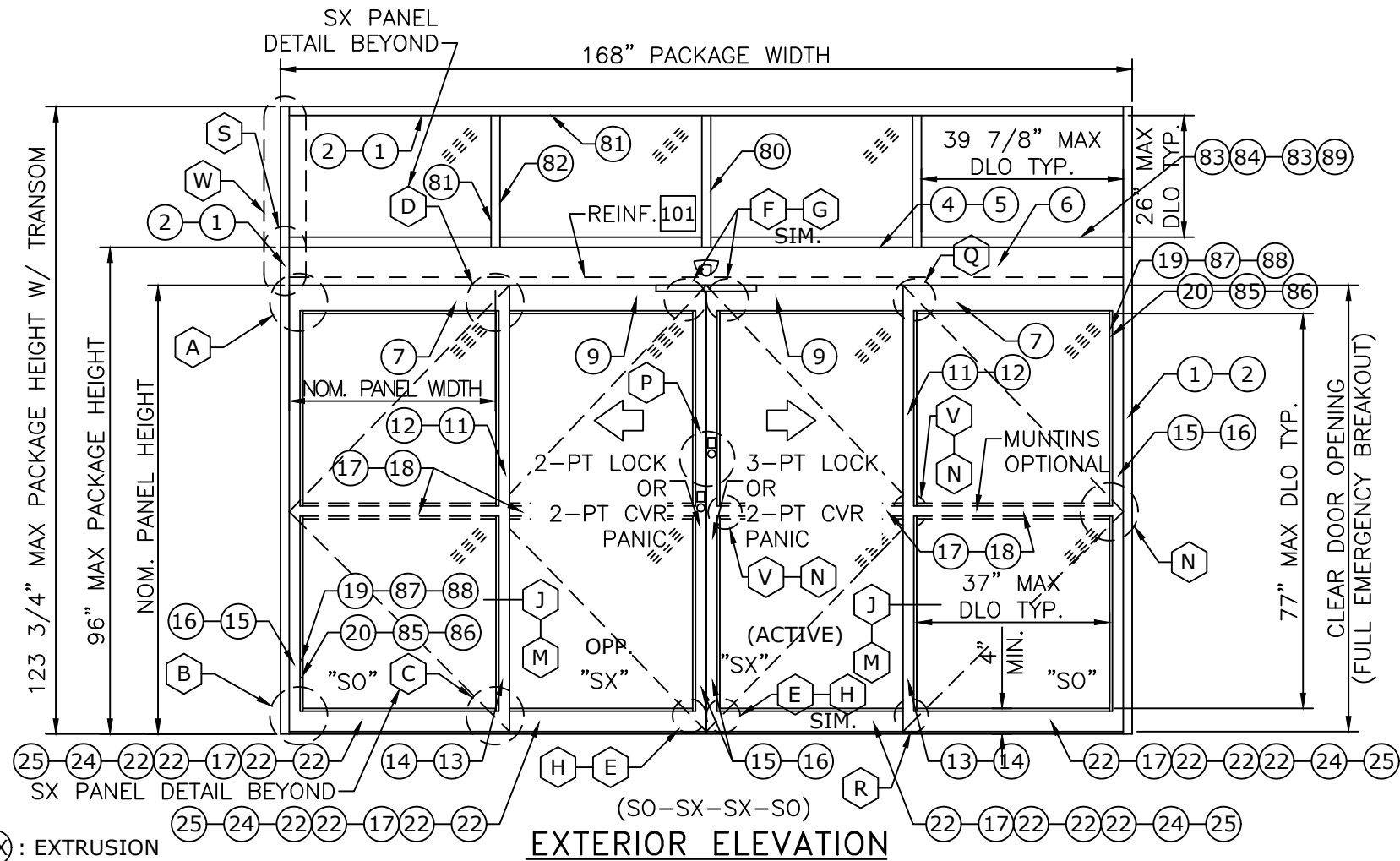
STANLEY Security
ACCESS TECHNOLOGIES
SERIES "DURA-STORM 2000/3000" AUTO SGD
BI-PARTING/SINGLE SLIDE (NI)
TDI-EVALUATION REPORT

REMARKS	DATE
INIT ISSUE	07/05/22

COPYRIGHT ENGINEERING EXPRESS®
22-53510
SCALE: NTS UNLESS NOTED
04 OF 19

DURA-STORM SERIES 3000 ELEVATION AND PLAN

Frank Bennardo
PE# 96064 CA# F-11383

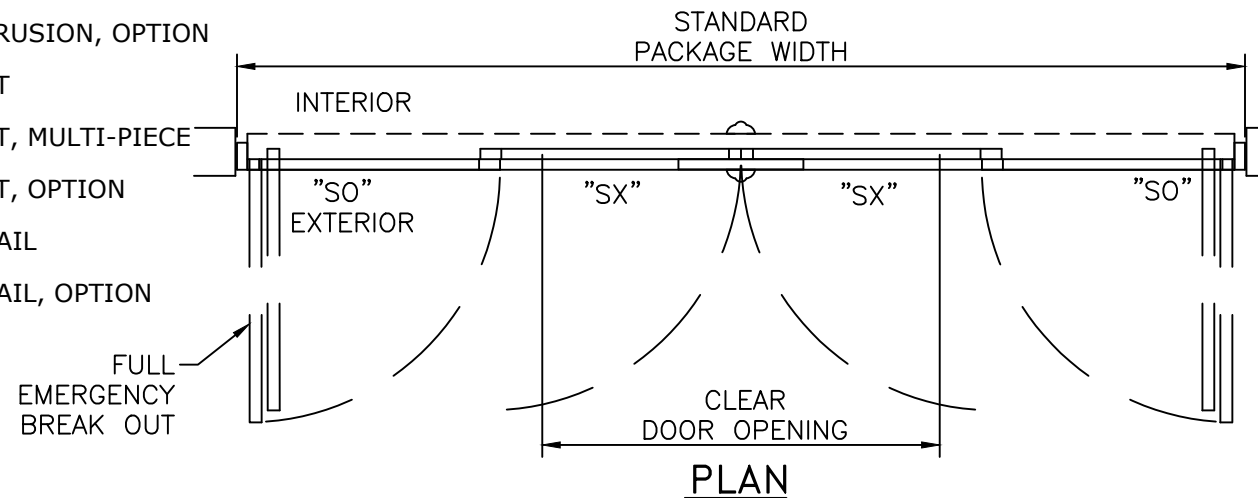


DESIGN RATINGS		
MISSILE IMPACT RATING		
<input checked="" type="checkbox"/>	NON-IMPACT RESISTANT	
DESIGN PRESSURE RATING (PSF[Pa])		
	WHERE WATER INFILTRATION RATING IS REQUIRED	WHERE WATER INFILTRATION RATING IS NOT REQUIRED
POSITIVE	NOT APPROVED	55 PSF
NEGATIVE	NOT APPROVED	55 PSF

SERIES 3000 AVAILABLE PACKAGE WIDTH INFORMATION*						
PACKAGE WIDTH	ROUGH OPENING	STILE TYPE	NOMINAL CLEAR DOOR OPENING	NOMINAL PANEL WIDTH (SX)	NOMINAL PANEL WIDTH (O)	CAULKING ALLOWANCE
168.0"	168.5"	NARROW	70.6"	42.7"	42.7"	1/4" / SIDE
168.0"	168.5"	MEDIUM	66.3"	43.4"	43.4"	1/4" / SIDE

SERIES 3000 AVAILABLE PACKAGE HEIGHT INFORMATION*			
PACKAGE HEIGHT	ROUGH OPENING	NOMINAL CLEAR DOOR OPENING	CAULKING ALLOWANCE
92.0"	92.3"	82.5"	1/4" TOP
96.0"	96.3"	86.5"	1/4" TOP

- ⊗ : EXTRUSION
- ⊗⊗ : EXTRUSION, MULTI-PIECE
- ⊗-⊗ : EXTRUSION, OPTION
- ⊠ : PART
- ⊠⊠ : PART, MULTI-PIECE
- ⊠-⊠ : PART, OPTION
- ⊞ : DETAIL
- ⊞-⊞ : DETAIL, OPTION



NOTES

- TYPICAL DOOR SHOWN. STILE, RAIL AND MUNTIN OPTIONS AVAILABLE AS INDICATED.
- HORIZONTAL MUNTIN BAR NOT REQUIRED EXCEPT AT PANIC DEVICE, AS INDICATED BY DASHED LINES. MAX PANEL DLO: 37" W X 77 3/8" H, 36 3/4" H WITH PANIC MUNTIN AS SHOWN.
- 4-POINT CVR LOCKING WITH G86 PANIC RELEASE (2-PT CVR ACTIVE & 2-PT CVR) AND 5-POINT LOCKING (3-PT ACTIVE & 2-PT) AVAILABLE. SEE SHEET 17.
- PRODUCT SHALL BE MANUFACTURED AND INSTALLED IN ACCORDANCE WITH PRODUCT APPROVALS.
- SEE SHEETS 7, 9, 10, 11, AND 12 FOR REQUIRED ANCHORAGE.
- SEE SHEET 16 FOR GLAZING DETAILS.

ENGINEERING EXPRESS
POSTAL ADDRESS:
401 W. ATLANTIC AVE. R10 #219
DELRAY BEACH, FL 33444
ENGINEERINGEXPRESS.COM

65 SCOTT SWAMP ROAD
FARMINGTON, CT 06032

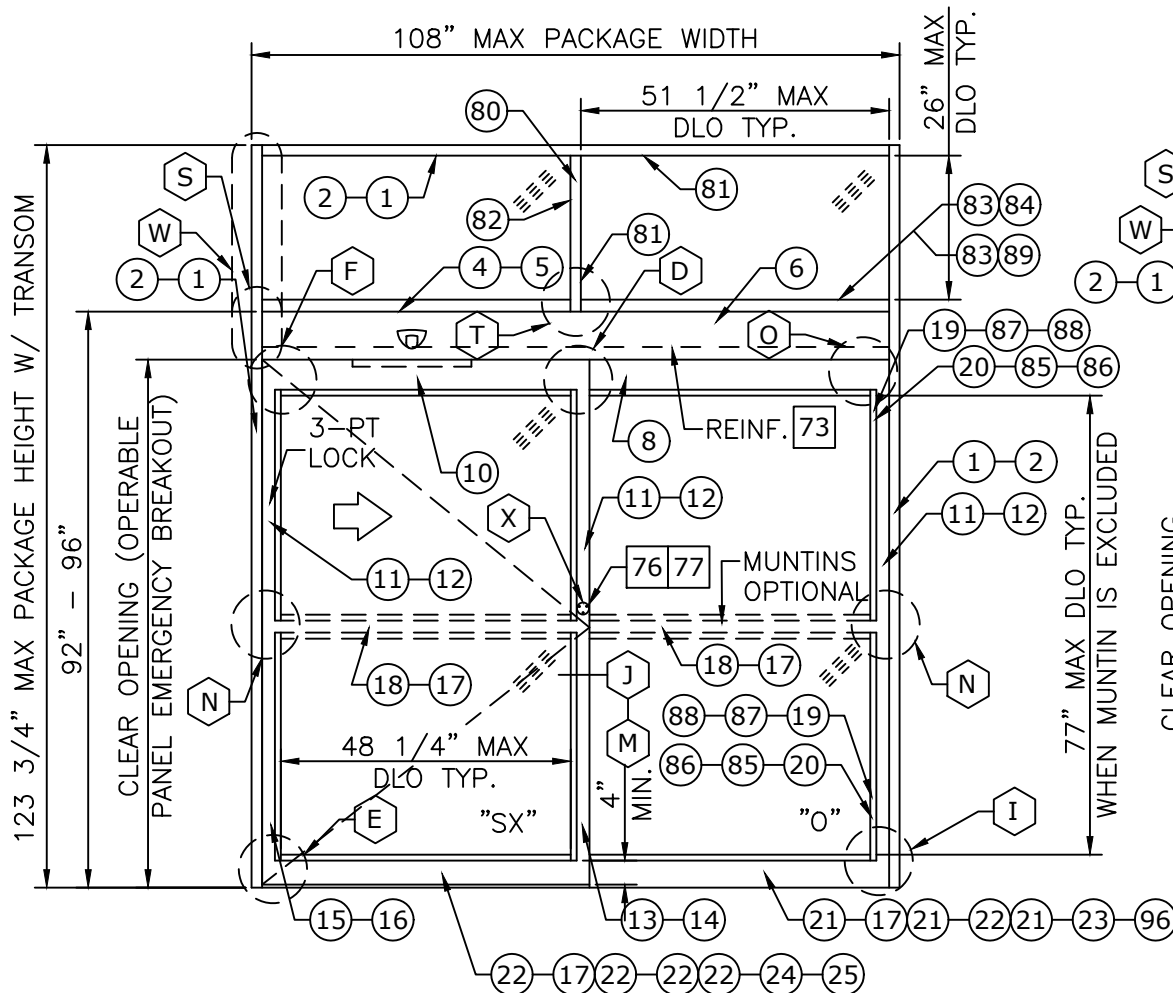
STANLEY Security
ACCESS TECHNOLOGIES
SERIES "DURA-STORM 2000/3000" AUTO SGD
BT-PARTING/SINGLE SLIDE (NI)
TDI-EVALUATION REPORT

REMARKS	DATE
INIT ISSUE	07/05/22

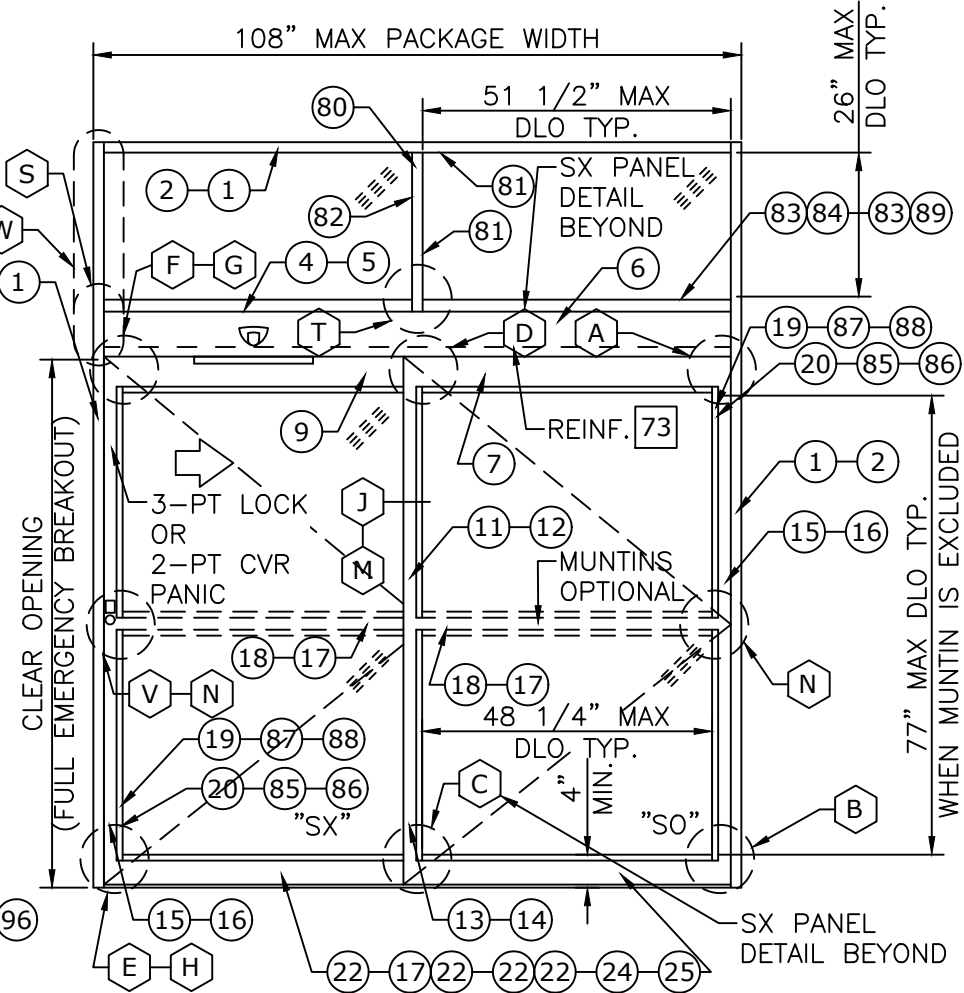
COPYRIGHT ENGINEERING EXPRESS®
22-53510
SCALE: NTS UNLESS NOTED

DURA-STORM SERIES 2000/3000 SINGLE SLIDES, ELEVATION AND PLAN

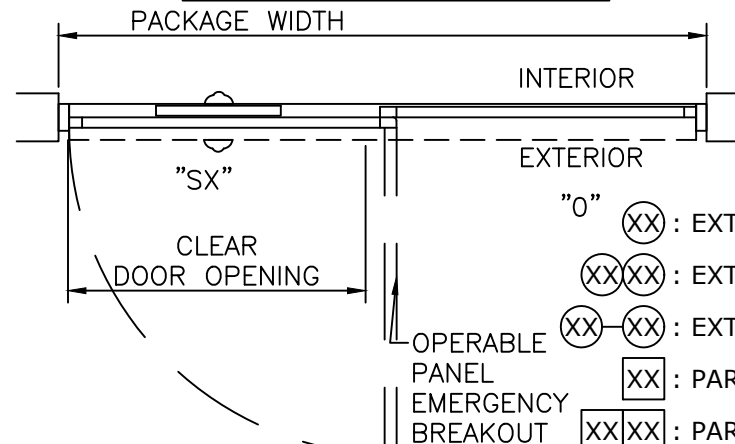
Frank Bennardo
PE# 96064 CA# F-11383



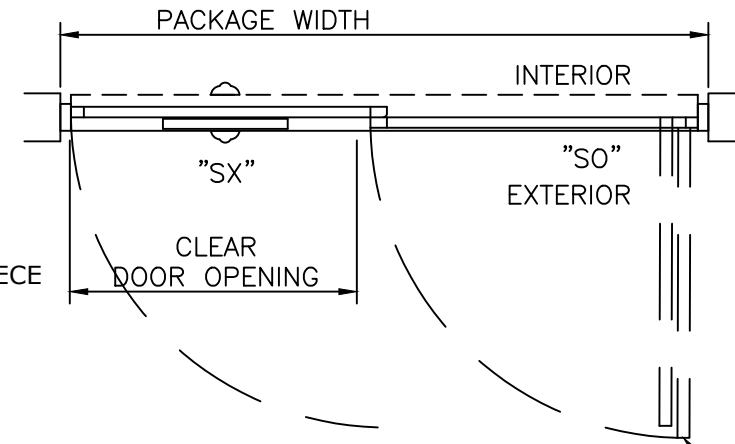
SERIES 2000 (SX-O) SINGLE SLIDE W/ TRANSOM
EXTERIOR ELEVATION



SERIES 3000 (SX-SO) SINGLE SLIDE W/ TRANSOM
EXTERIOR ELEVATION



SERIES 2000 (SX-O) SINGLE SLIDE
PLAN



SERIES 3000 (SX-SO) SINGLE SLIDE
PLAN

NOTES

- TYPICAL DOOR SHOWN. STILE, RAIL AND MUNTIN OPTIONS AVAILABLE AS INDICATED.
- HORIZONTAL MUNTIN BAR NOT REQUIRED EXCEPT AT PANIC DEVICE, AS INDICATED BY DASHED LINES. MAX PANEL DLO: 48 1/4" W X 77 1/16" H, 36 3/4" H WITH PANIC MUNTIN AS SHOWN. MAX TRANSOM DLO 51.5" W X 26" H.
- 2-POINT CVR LOCKING WITH G86 PANIC RELEASE AND 3-POINT LOCKING AVAILABLE ON SERIES 3000. 3-POINT ONLY ON SERIES 2000. SEE SHEET 17.
- PRODUCT SHALL BE MANUFACTURED AND INSTALLED IN ACCORDANCE WITH PRODUCT APPROVALS.
- SEE SHEETS 7 THROUGH 12 FOR REQUIRED ANCHORAGE.
- SEE SHEET 16 FOR GLAZING DETAILS.

DESIGN RATINGS		
MISSILE IMPACT RATING		
<input checked="" type="checkbox"/> NON-IMPACT RESISTANT		
DESIGN PRESSURE RATING (PSF[Pa])		
	WHERE WATER INFILTRATION RATING IS REQUIRED	WHERE WATER INFILTRATION RATING IS NOT REQUIRED
POSITIVE	NOT APPROVED	55 PSF
NEGATIVE	NOT APPROVED	55 PSF

SERIES 2000 AND 3000 SINGLE SLIDE AVAILABLE PACKAGE WIDTH INFORMATION*						
PACKAGE WIDTH	ROUGH OPENING	STILE TYPE	NOMINAL CLEAR DOOR OPENING	NOMINAL PANEL WIDTH (SX)	NOMINAL PANEL WIDTH (O)	CAULKING ALLOWANCE
108.0"	108.5"	NARROW	46.4"	53.8"	53.8"	1/4" / SIDE
108.0"	108.5"	MEDIUM	44.3"	54.6"	54.6"	1/4" / SIDE

SERIES 2000 AND 3000 SINGLE SLIDE AVAILABLE PACKAGE HEIGHT INFORMATION*				
PACKAGE HEIGHT	ENTRANCE HEIGHT	ROUGH OPENING	NOMINAL CLEAR DOOR OPENING	CAULKING ALLOWANCE
119.8"	92.0"	92.3"	82.5"	1/4" TOP
123.8"	96.0"	96.3"	86.5"	1/4" TOP

* NOTE: THIS SYSTEM WAS TESTED AT A SIZE OF 108"X123-3/4", THESE TABLES INDICATE PACKAGE SIZES AVAILABLE FROM MANUFACTURER.

ENGINEERING EXPRESS
POSTAL ADDRESS:
401 W. ATLANTIC AVE. R10 #219
DELRAY BEACH, FL 33444
ENGINEERINGEXPRESS.COM

65 SCOTT SWAMP ROAD
FARMINGTON, CT 06032

STANLEY Security
ACCESS TECHNOLOGIES
SERIES "DURA-STORM 2000/3000" AUTO SGD
BI-PARTING/SINGLE SLIDE (NI)
TDI-EVALUATION REPORT

DRWN	CHKD	DATE
SSQ	RS	07/05/22

COPYRIGHT ENGINEERING EXPRESS®

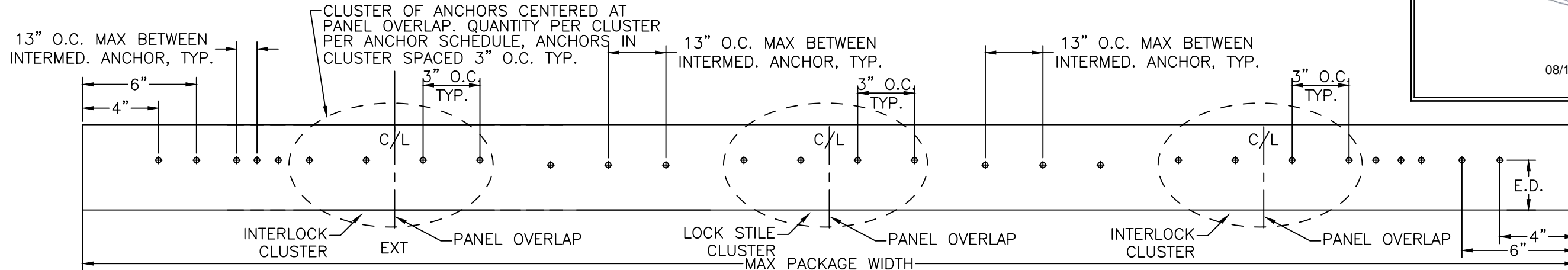
22-53510

SCALE: NTS UNLESS NOTED

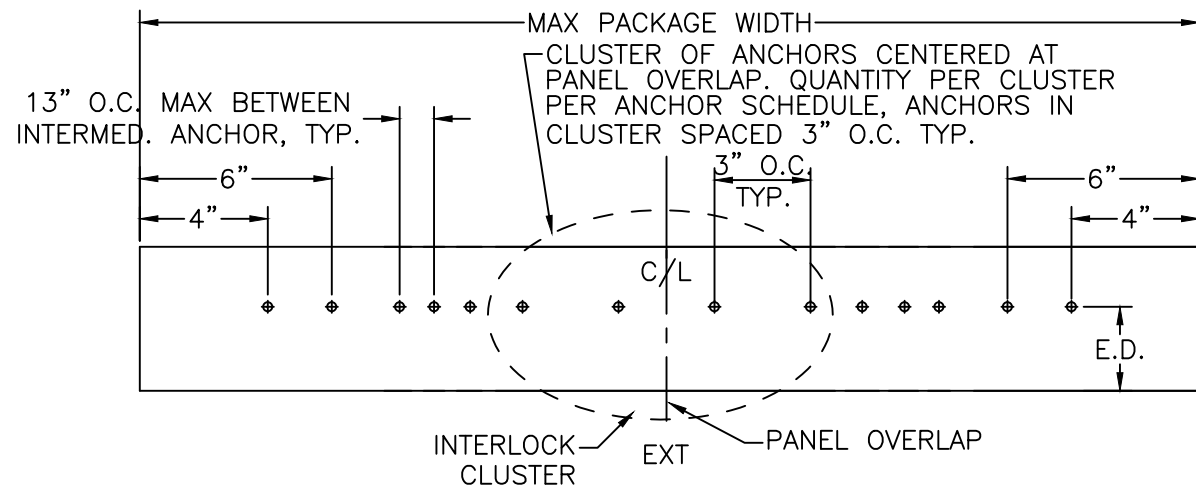
06 OF 19

DURA-STORM SERIES 2000/3000 HEADER ANCHORING

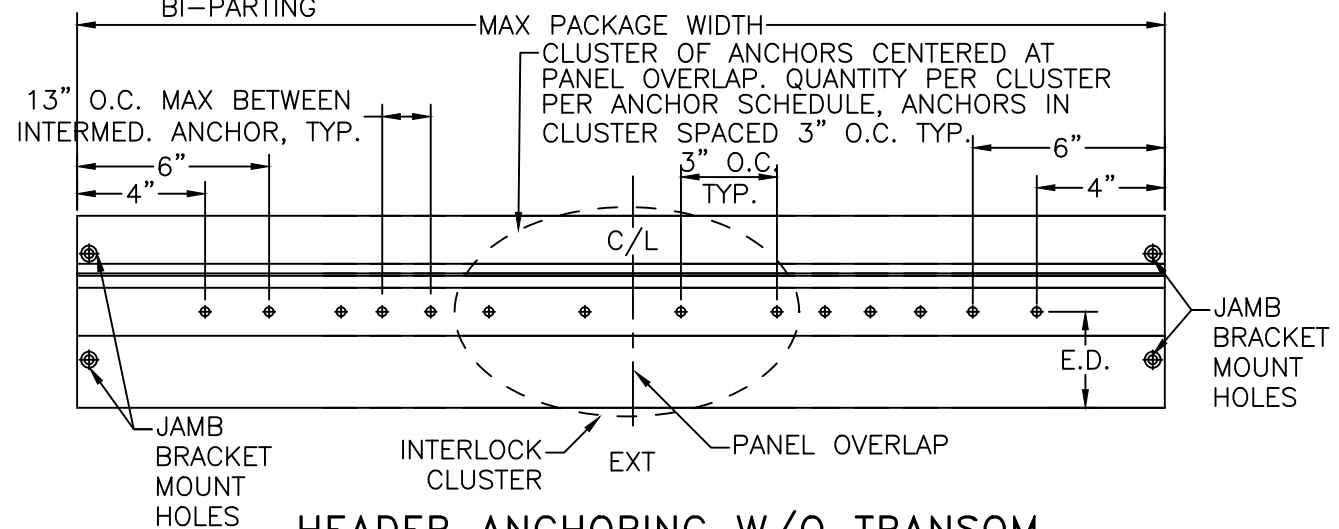
Frank Bennardo
PE# 96064 CA# F-11383



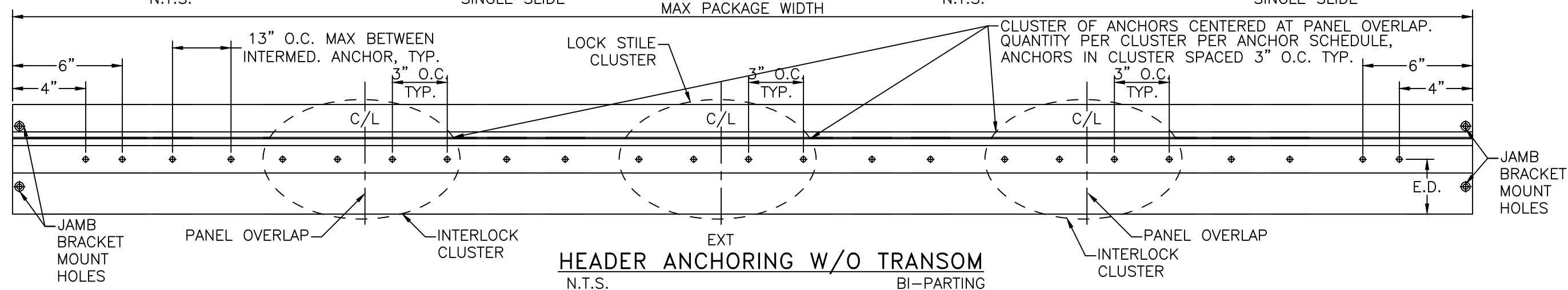
HEADER ANCHORING WITH TRANSOM
N.T.S.



HEADER ANCHORING WITH TRANSOM
N.T.S. SINGLE SLIDE



HEADER ANCHORING W/O TRANSOM
N.T.S. BI-PARTING



HEADER ANCHORING W/O TRANSOM
N.T.S. SINGLE SLIDE

ANCHOR SCHEDULE									
HOST STRUCTURE	ANCHOR	EMBEDMENT	EDGE DISTANCE	NUMBER OF ANCHORS PER INTERLOCK/LOCK STILE CLUSTER				MAX INTERMEDIATE ANCHOR SPACING ALONG HEAD & THRESHOLD	MAX ANCHOR SPACING ALONG JAMBS
				HEAD		THRESHOLD			
				SINGLE SLIDE	BI-PART	SINGLE SLIDE	BI-PART		
3KSI MIN. CONCRETE	1/4" POWERS/RAWL PERMASEAL TAPPER	1-1/2"	3"	4	4	6	6	13" O.C. MAX	17-5/8" O.C. MAX
3/16" MIN. A36 STEEL	1/4-20 SAE GR. 5 SMS	FULL THREAD ENGAGEMENT	1/2"	4	4	N/A	N/A	13" O.C. MAX	17-5/8" O.C. MAX
G=0.55 MIN. WOOD	#14 WOOD SCREW	2"	3/4"	4	4	N/A	N/A	13" O.C. MAX	17-5/8" O.C. MAX
0.090" MIN. 6063-T5 ALUM.	#14 SAE GR. 5 SDS	FULL THREAD ENGAGEMENT	1/2"	4	4	N/A	N/A	13" O.C. MAX	17-5/8" O.C. MAX

SEE JAMB ANCHORS SHEETS 8 THROUGH 10, AND THRESHOLD ANCHORS SHEET 12. THRESHOLD ANCHORS APPLICABLE ONLY TO 3KSI CONCRETE.

ENGINEERING EXPRESS
POSTAL ADDRESS:
401 W. ATLANTIC AVE. R10 #219
DELRAY BEACH, FL 33444
ENGINEERINGEXPRESS.COM

65 SCOTT SWAMP ROAD
FARMINGTON, CT 06032

STANLEY Security
ACCESS TECHNOLOGIES

DRWN	CHKD	DATE
SSQ	RS	07/05/22

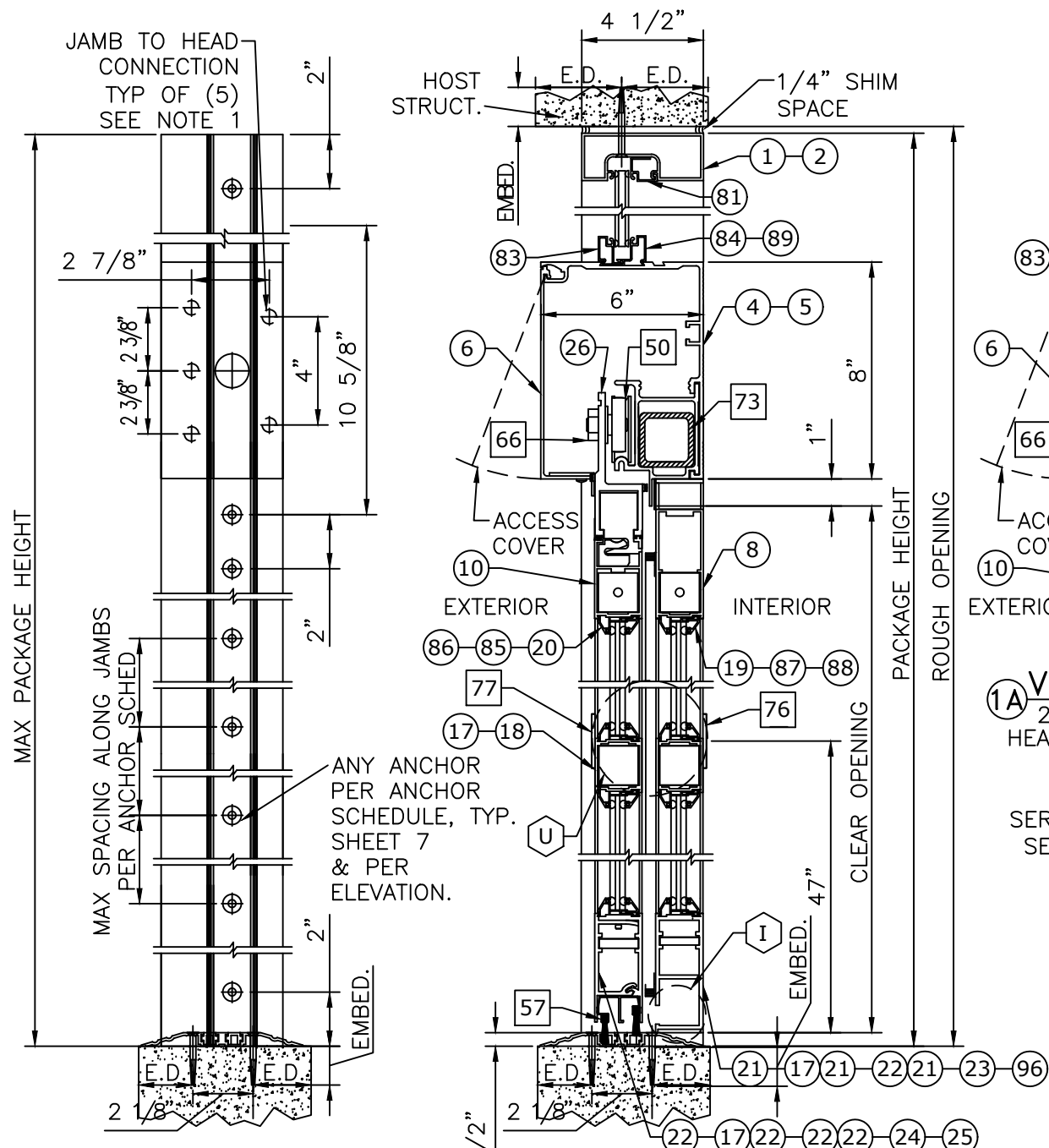
22-53510
SCALE: NTS UNLESS NOTED

07 OF 19

c:\users\sam\engineering\express\production - documents\projects\22-53510 update.tdi_1030 - 18-6976a - noa 20-1216.25, 20-33204\work\drawings & cad\22-53510 durastorm 3000 (n) - tdi.dwg

DURA-STORM SERIES 2000 JAMB SECTIONS & ANCHORING, W/ STD 5-POINT LOCKING

Frank Bennardo
PE# 96064 CA# F-11383



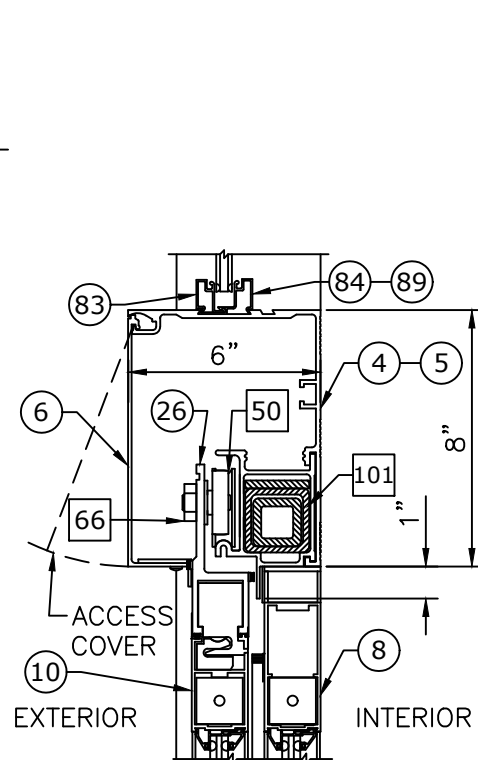
FRAME ANCHORING
N.T.S.

SERIES 2000
(0-SX-SX-0) OR (SX-0)
SEE HORIZONTAL
SECTIONS 11/11 & 12/11
RESPECTIVELY

① VERTICAL SECTION
2"=1'-0" SINGLE SLIDE

SERIES 2000 (SX-0)
SEE HORIZONTAL SECTION
12/11

WITH TRANSOM

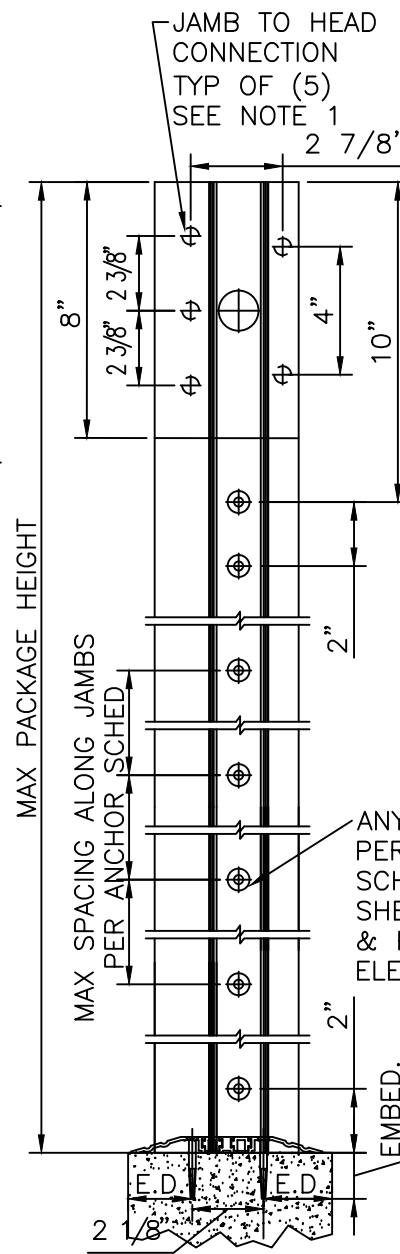


①A VERTICAL SECTION
2"=1'-0" BI-PARTING
HEADER REINFORCING DETAIL
WITH TRANSOM

SERIES 2000 (0-SX-SX-0)
SEE HORIZONTAL SECTION
11/11

SEE HEAD ANCHORS SHEET 7,
AND THRESHOLD ANCHORS
SHEET 12. THRESHOLD
ANCHORS APPLICABLE ONLY
TO 3KSI CONCRETE.

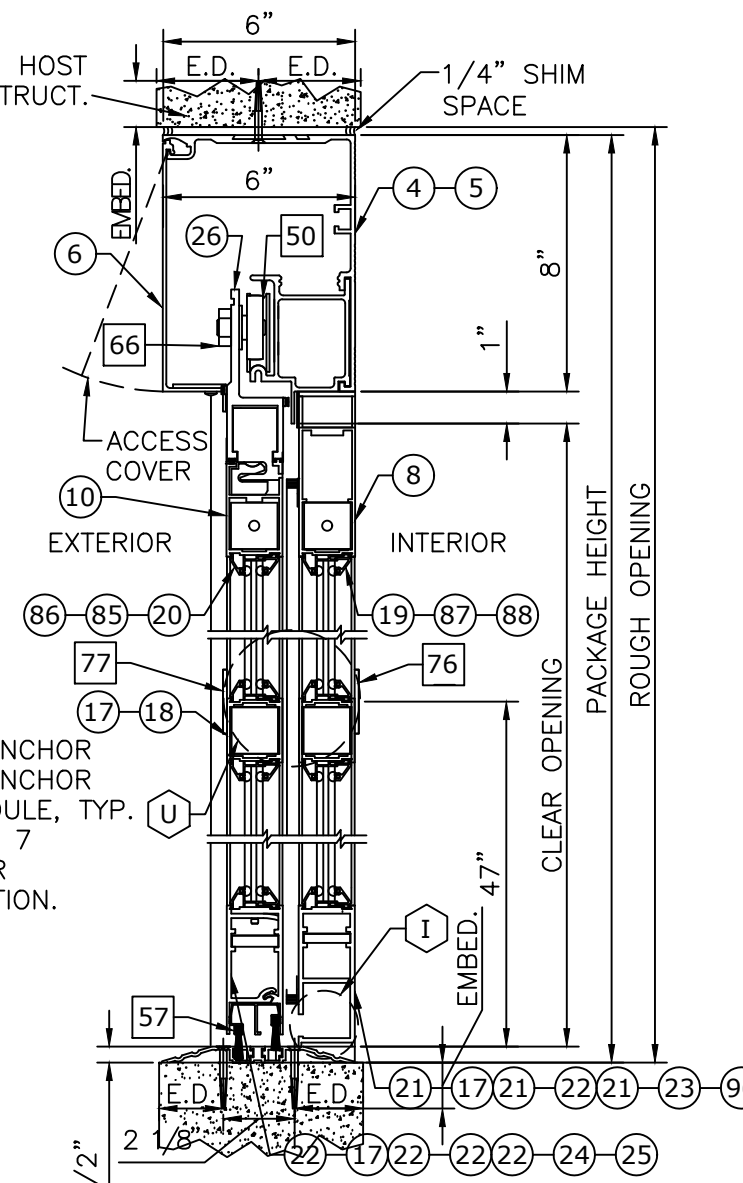
**NOTE: SEE SHEET 7 FOR ANCHOR SCHEDULE
AND ALLOWABLE ANCHOR TYPES**



FRAME ANCHORING
N.T.S.

SERIES 2000
(0-SX-SX-0) OR (SX-0)
SEE HORIZONTAL
SECTIONS 11/11 & 12/11
RESPECTIVELY

WITHOUT TRANSOM



② VERTICAL SECTION
2"=1'-0"

SERIES 2000
(0-SX-SX-0) OR (SX-0)
SEE HORIZONTAL
SECTIONS 11/11 & 12/11
RESPECTIVELY

NOTES

- JAMB TO HEAD CONNECTION FASTENERS; 5/16-18 HHMS WITH WASHER.
- SEE SHEET 14 FOR STACKED BOTTOM RAIL OPTIONS.

ENGINEERING EXPRESS
POSTAL ADDRESS:
401 W. ATLANTIC AVE. R10 #219
DELRAY BEACH, FL 33444
ENGINEERINGEXPRESS.COM

65 SCOTT SWAMP ROAD
FARMINGTON, CT 06032

STANLEY Security
ACCESS TECHNOLOGIES
SERIES "DURA-STORM 2000/3000" AUTO SGD
BI-PARTING/SINGLE SLIDE (NI)
TDI-EVALUATION REPORT

DRWN	CHKD	DATE
SSQ	RS	07/05/22

REMARKS
INITIALS

COPYRIGHT ENGINEERING EXPRESS®

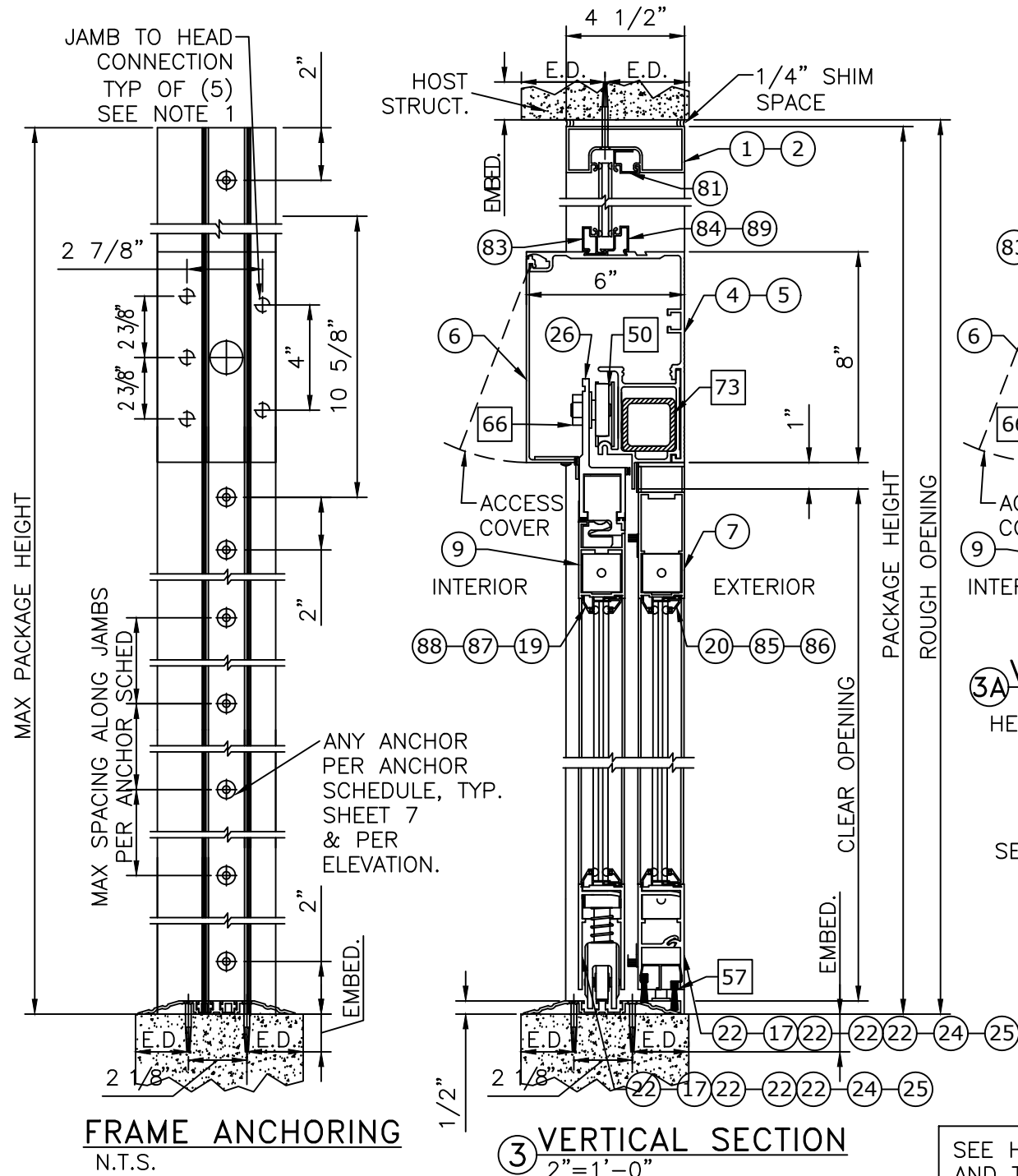
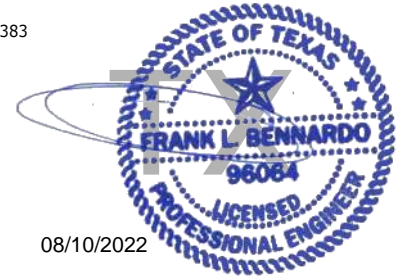
22-53510

SCALE: NTS UNLESS NOTED

08 OF 19

DURA-STORM SERIES 3000 JAMB SECTIONS & ANCHORING, W/ STD 5-POINT LOCKING

Frank Bennardo
PE# 96064 CA# F-11383

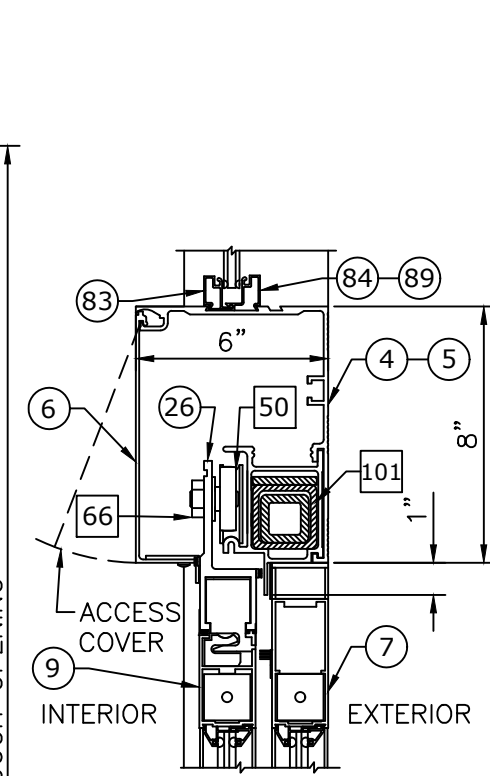


FRAME ANCHORING
N.T.S.

SERIES 3000
(S0-SX-SX-S0) OR (SX-S0)
SEE HORIZONTAL SECTIONS
7/11 & 8/11 RESPECTIVELY

3) VERTICAL SECTION
2"=1'-0"

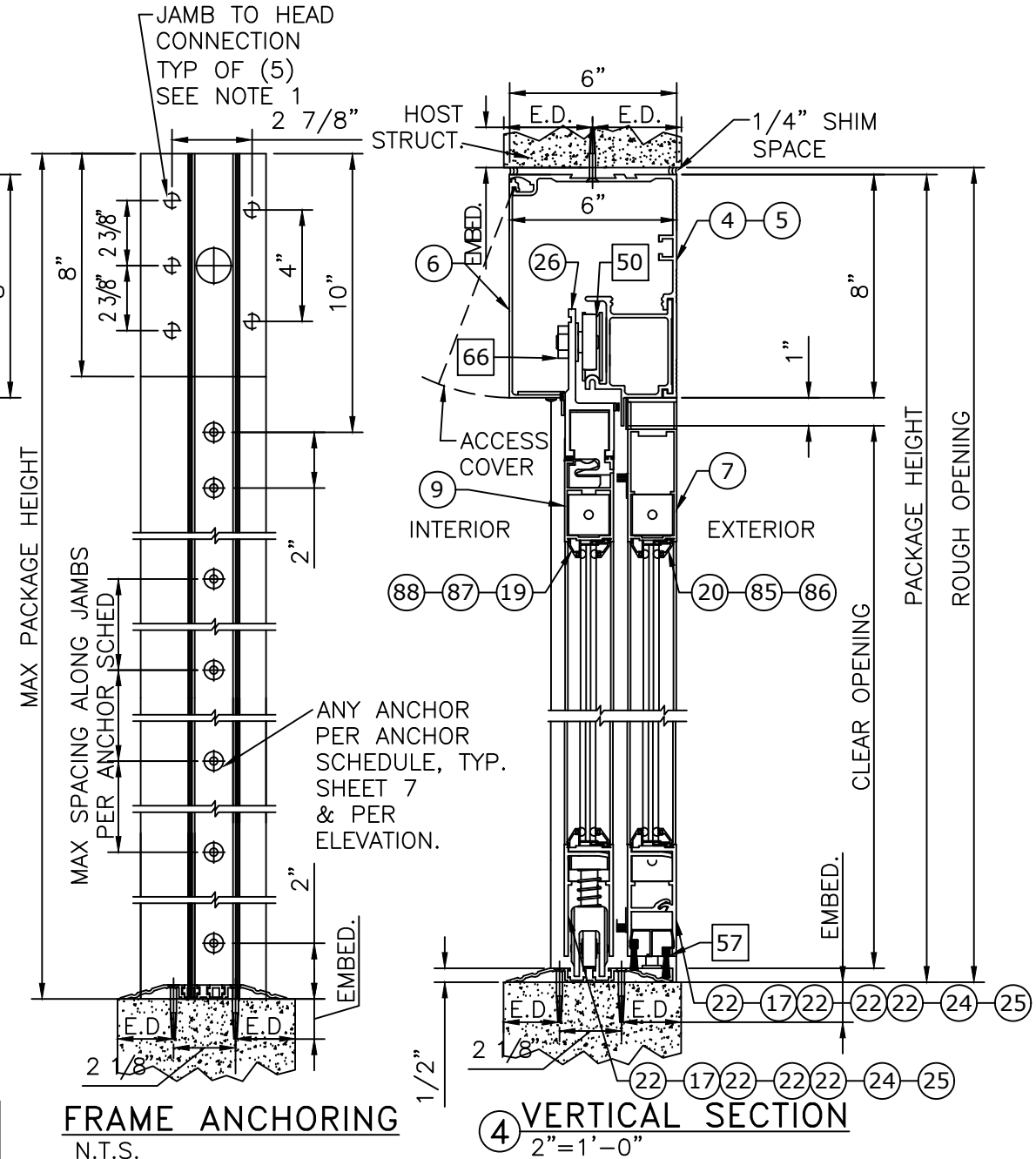
SERIES 3000 (SX-S0)
SEE HORIZONTAL SECTION
8/11



3A) VERTICAL SECTION
2"=1'-0" BI-PARTING
HEADER REINFORCING DETAIL
WITH TRANSOM

SERIES 3000
(S0-SX-SX-S0)
SEE HORIZONTAL SECTION
7/11

SEE HEAD ANCHORS SHEET 7,
AND THRESHOLD ANCHORS
SHEET 12. THRESHOLD
ANCHORS APPLICABLE ONLY
TO 3KSI CONCRETE.



FRAME ANCHORING
N.T.S.

SERIES 3000
(S0-SX-SX-S0) OR (SX-S0)
SEE HORIZONTAL SECTIONS
7/11 & 8/11 RESPECTIVELY

4) VERTICAL SECTION
2"=1'-0"

SERIES 3000
(S0-SX-SX-S0) OR (SX-S0)
SEE HORIZONTAL SECTIONS
7/11 & 8/11 RESPECTIVELY

WITH TRANSOM

WITHOUT TRANSOM

NOTES

- JAMB TO HEAD CONNECTION FASTENERS; 5/16-18 HHMS WITH WASHER.
- SEE SHEET 14 FOR STACKED BOTTOM RAIL OPTIONS.

**NOTE: SEE SHEET 7 FOR ANCHOR SCHEDULE
AND ALLOWABLE ANCHOR TYPES**

ENGINEERING EXPRESS
POSTAL ADDRESS:
401 W. ATLANTIC AVE. R10 #219
DELRAY BEACH, FL 33444
ENGINEERINGEXPRESS.COM

65 SCOTT SWAMP ROAD
FARMINGTON, CT 06032

STANLEY Security
ACCESS TECHNOLOGIES

DRWN	CHKD	DATE
SSQ	RS	07/05/22

22-53510

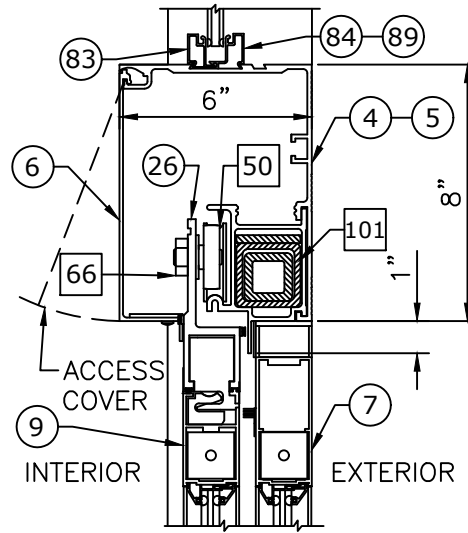
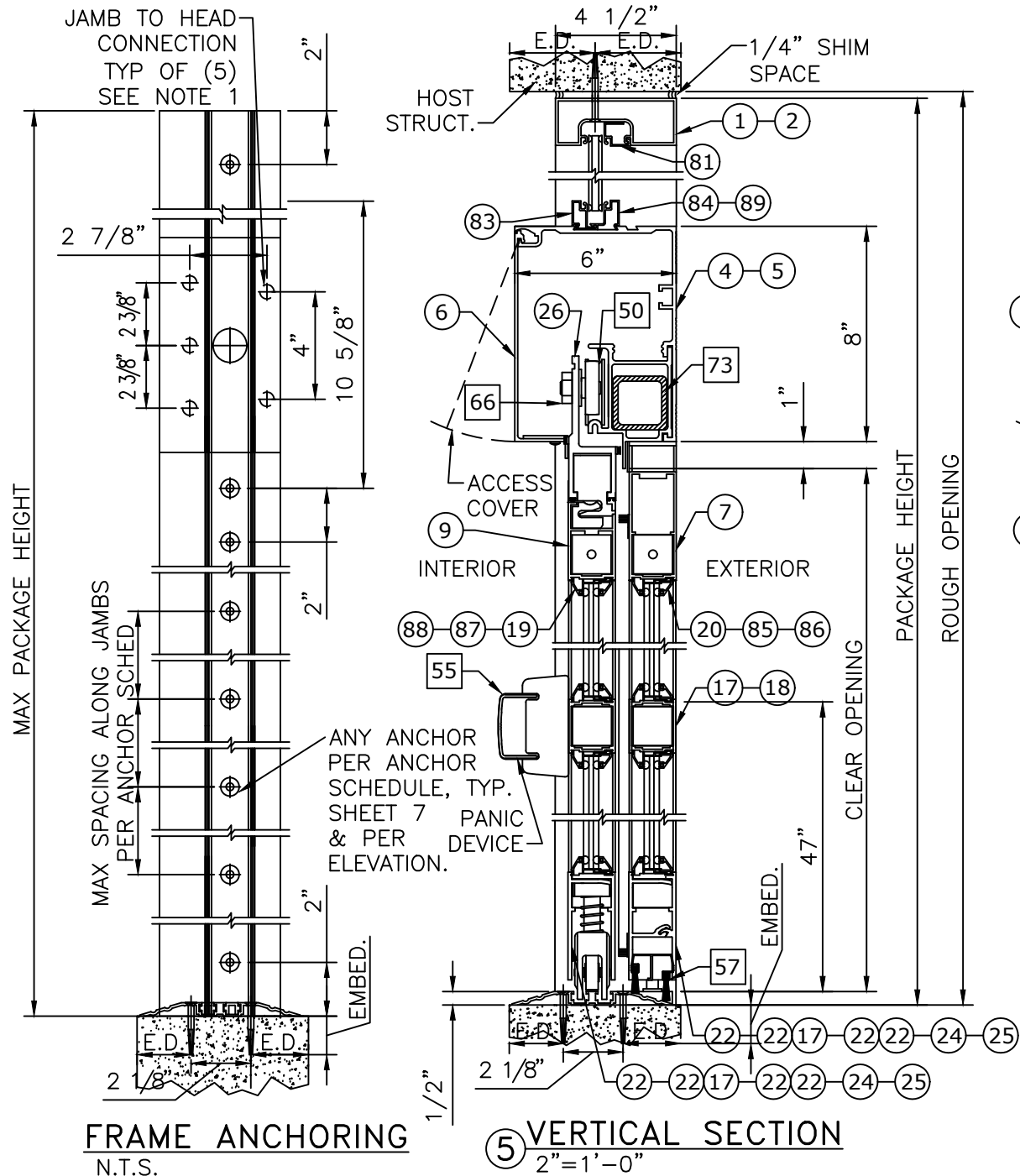
SCALE: NTS UNLESS NOTED

09 OF 19

8/10/2022 11:25 AM SAM c:\users\sam\engineering\express\production - documents\projects\22-53510 update tdi_1030 - 18-6976a - noa 20-1216.25, 20-33204\work\drawings & cad\22-53510 durastorm 3000 (n) - tdi.dwg

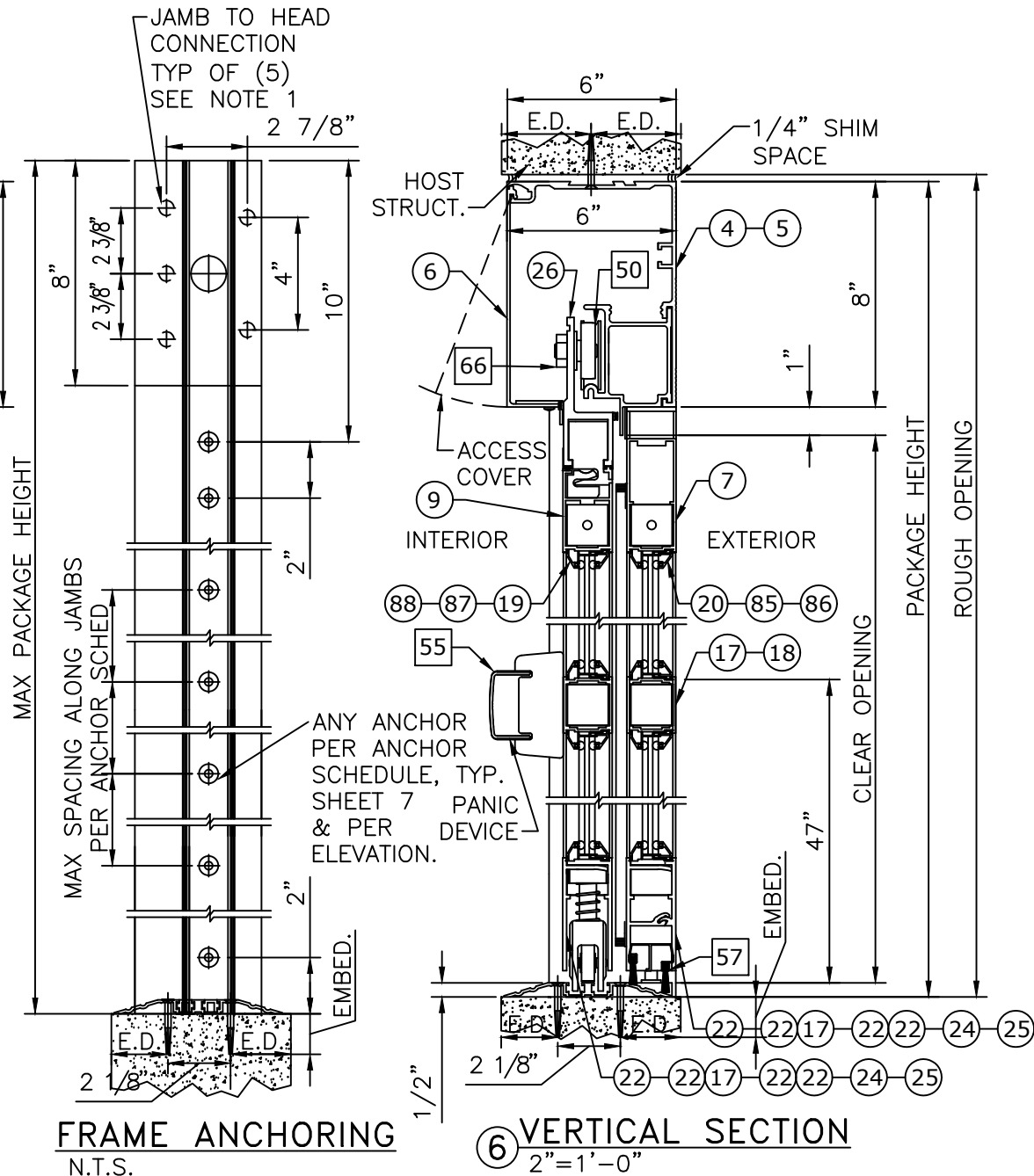
DURA-STORM SERIES 3000 JAMB SECTIONS & ANCHORING, W/ 4-POINT CVR LOCKING

Frank Bennardo
PE# 96064 CA# F-11383



5A VERTICAL SECTION
2"=1'-0" BI-PARTING
HEADER REINFORCING DETAIL
WITH TRANSOM

SERIES 3000
(S0-SX-SX-S0)
SEE HORIZONTAL SECTION
9/11



SEE HEAD ANCHORS SHEET 7,
AND THRESHOLD ANCHORS
SHEET 12. THRESHOLD
ANCHORS APPLICABLE ONLY
TO 3KSI CONCRETE.

**NOTE: SEE SHEET 7 FOR ANCHOR SCHEDULE
AND ALLOWABLE ANCHOR TYPES**

FRAME ANCHORING
N.T.S.
SERIES 3000
(S0-SX-SX-S0) OR (SX-S0)
SEE HORIZONTAL SECTIONS
9/11 & 10/11 RESPECTIVELY

5 VERTICAL SECTION
2"=1'-0"
SERIES 3000 (SX-S0)
SEE HORIZONTAL SECTION
10/11

FRAME ANCHORING
N.T.S.
SERIES 3000
(S0-SX-SX-S0) OR (SX-S0)
SEE HORIZONTAL SECTIONS
9/11 & 10/11 RESPECTIVELY

6 VERTICAL SECTION
2"=1'-0"
SERIES 3000 (S0-SX-SX-S0)
OR (SX-S0)
SEE HORIZONTAL SECTIONS
9/11 & 10/11 RESPECTIVELY

WITH TRANSOM

WITHOUT TRANSOM

- NOTES**
- JAMB TO HEAD CONNECTION FASTENERS; 5/16-18 HHMS WITH WASHER.
 - SEE SHEET 14 FOR STACKED BOTTOM RAIL OPTIONS.

ENGINEERING EXPRESS
POSTAL ADDRESS:
401 W. ATLANTIC AVE. R10 #219
DELRAY BEACH, FL 33444
ENGINEERINGEXPRESS.COM

65 SCOTT SWAMP ROAD
FARMINGTON, CT 06032

STANLEY Security
ACCESS TECHNOLOGIES
SERIES "DURA-STORM 2000/3000" AUTO SGD
BI-PARTING/SINGLE SLIDE (NI)
TDI-EVALUATION REPORT

DRWN	CHKD	DATE
SSQ	RS	07/05/22

REMARKS
INIT ISSUE

22-53510

SCALE: NTS UNLESS NOTED

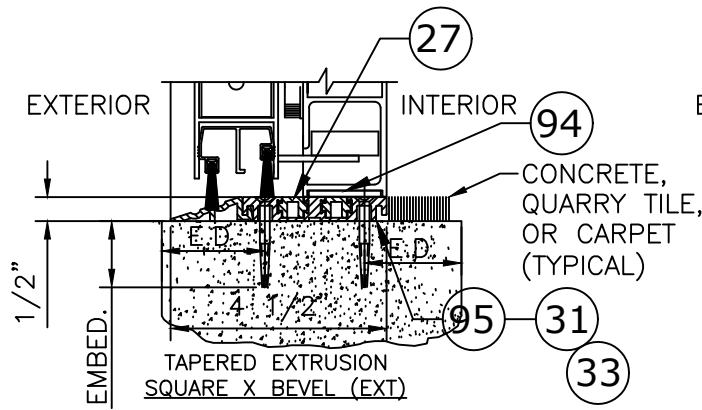
DURA-STORM SERIES 2000/3000 THRESHOLDS & ANCHORING

Frank Bennardo
PE# 96064 CA# F-11383

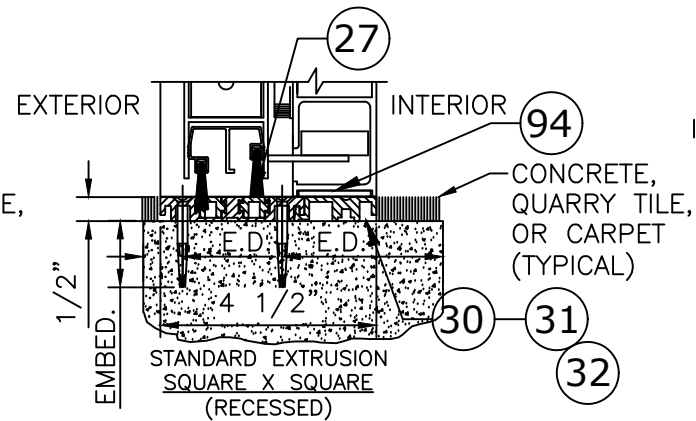


NOTE: USE CONCRETE ANCHOR PER ANCHOR SCHEDULE FOR ALL THRESHOLD ANCHORAGE DETAILS SHOWN HEREIN. SEE SHEET 7 FOR ANCHOR SCHEDULE AND ALLOWABLE CONCRETE ANCHOR TYPES

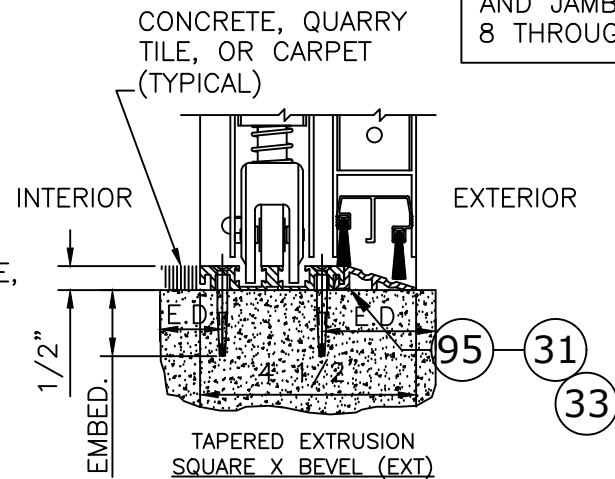
SEE HEAD ANCHORS SHEET 7, AND JAMB ANCHORS SHEETS 8 THROUGH 10.



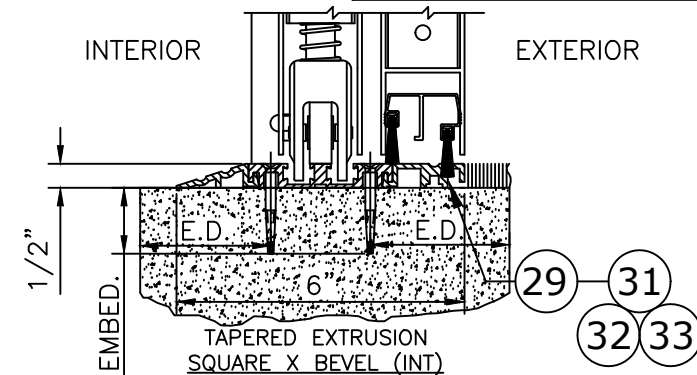
THRESHOLD-TAPERED EXT
3"=1'-0" 2000



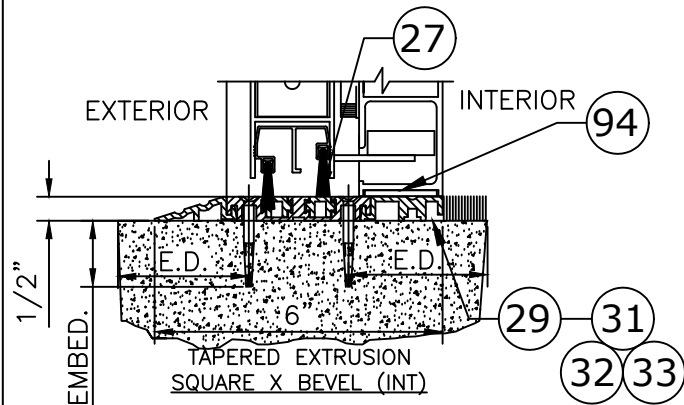
THRESHOLD-SQUARE
3"=1'-0" 2000



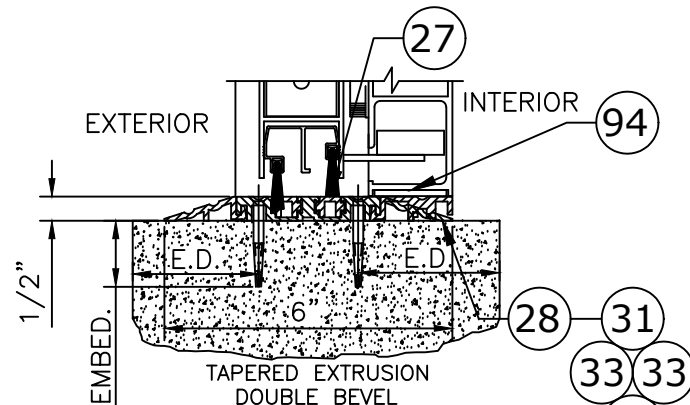
THRESHOLD-TAPERED EXT
3"=1'-0" 3000



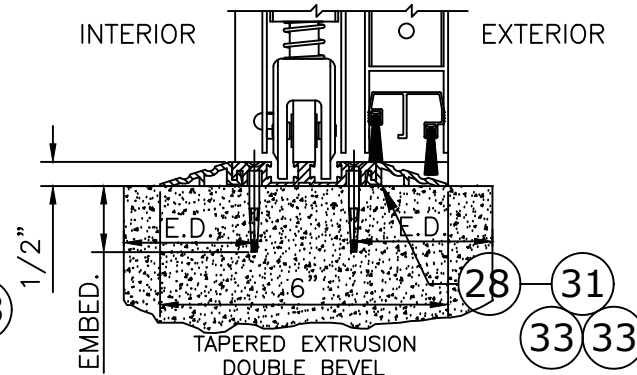
THRESHOLD-TAPERED INT
3"=1'-0" 3000



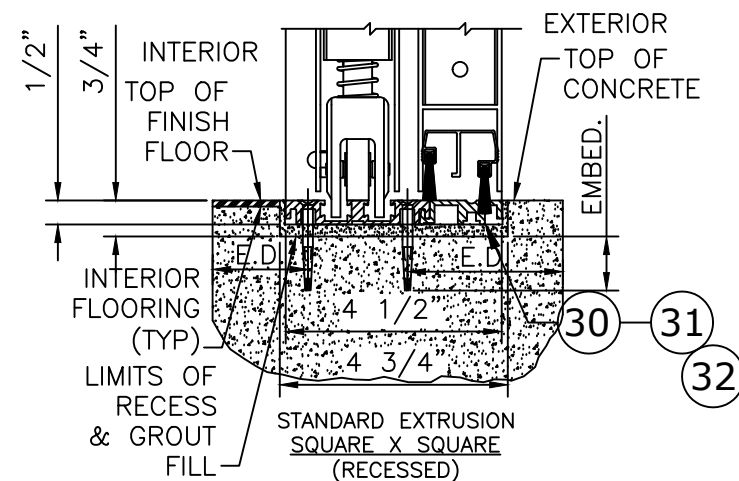
THRESHOLD-TAPERED INT
3"=1'-0" 2000



THRESHOLD-TAPERED
3"=1'-0" 2000

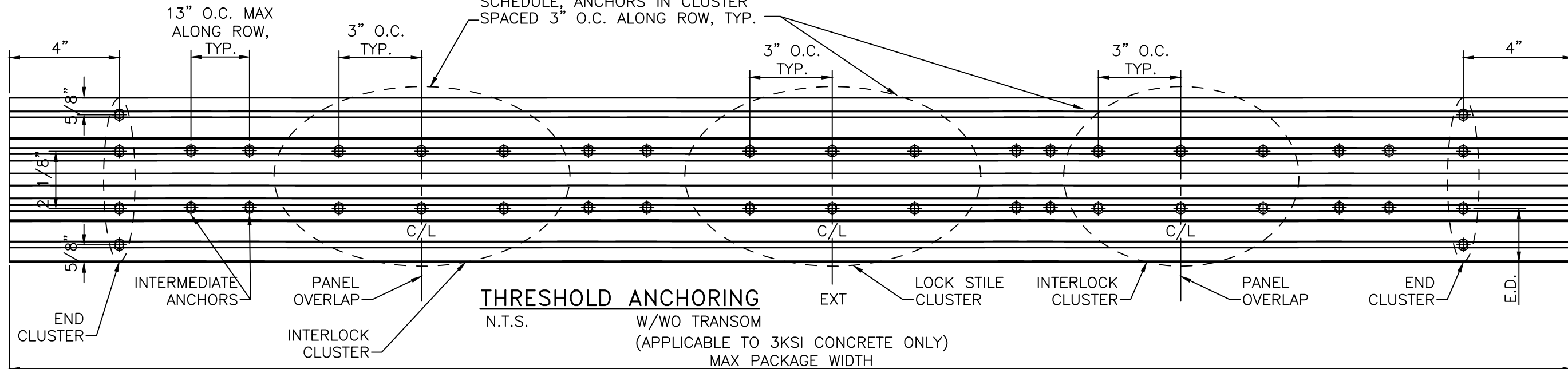


THRESHOLD-TAPERED
3"=1'-0" 3000



THRESHOLD-SQUARE
3"=1'-0" 3000

CLUSTER OF ANCHORS IN (2) ROWS CENTERED AT PANEL OVERLAP. QUANTITY PER CLUSTER PER ANCHOR SCHEDULE, ANCHORS IN CLUSTER SPACED 3" O.C. ALONG ROW, TYP.



THRESHOLD ANCHORING
N.T.S. W/WO TRANSOM
(APPLICABLE TO 3KSI CONCRETE ONLY)
MAX PACKAGE WIDTH

ENGINEERING EXPRESS
POSTAL ADDRESS:
401 W. ATLANTIC AVE. R10 #219
DELRAY BEACH, FL 33444
ENGINEERINGEXPRESS.COM

65 SCOTT SWAMP ROAD
FARMINGTON, CT 06032

STANLEY Security
ACCESS TECHNOLOGIES

SERIES "DURA-STORM 2000/3000" AUTO SGD
BT-PARTING/SINGLE SLIDE (NT)
TDI-EVALUATION REPORT

DRWN	CHKD	DATE
SSQ	RS	07/05/22

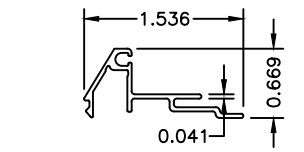
REMARKS
INIT ISSUE

22-53510

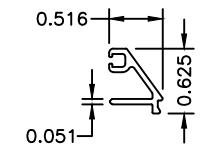
SCALE: NTS UNLESS NOTED

DURA-STORM SERIES 2000/3000 EXTRUSIONS

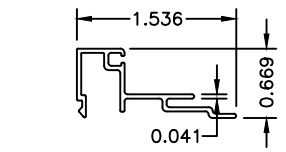
Frank Bennardo
PE# 96064 CA# F-11383



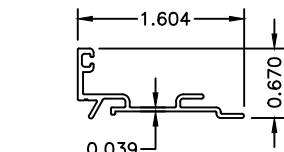
20 1/4" GUTTER
N.T.S. 6063-T6
HORIZONTAL



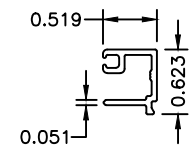
19 1/4" STOP
N.T.S. 6063-T6
HORIZONTAL



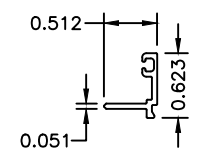
85 1/4" GUTTER
N.T.S. 6063-T6
VERTICAL



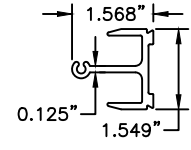
86 IG GUTTER
N.T.S. 6063-T6



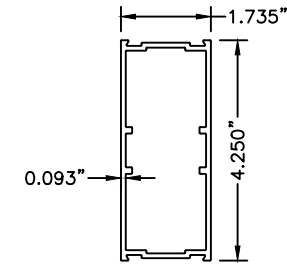
87 1/4" STOP
N.T.S. 6063-T6
VERTICAL



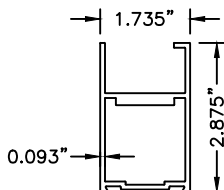
88 IG STOP
N.T.S. 6063-T6



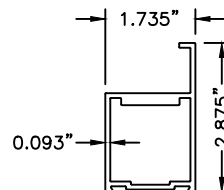
79 PANIC MUNTIN CLIP
N.T.S. 6063-T6



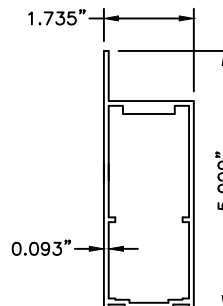
18 MUNTIN BAR
N.T.S. 6063-T6



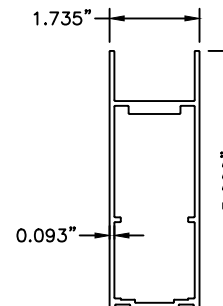
9 TOP RAIL, SX
N.T.S. 3000 6063-T6



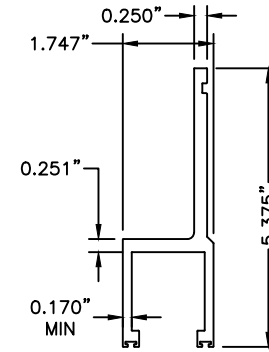
10 TOP RAIL, SX
N.T.S. 2000 6063-T6



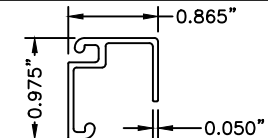
7 TOP RAIL, SO
N.T.S. 3000 6063-T6



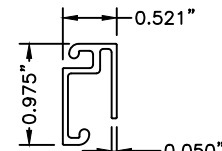
8 TOP RAIL, O
N.T.S. 2000 6063-T6



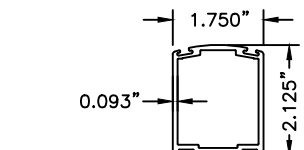
26 HANGER
N.T.S. 6063-T6



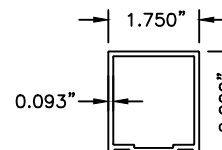
81 TRANSOM FRAME
N.T.S. 6063-T6



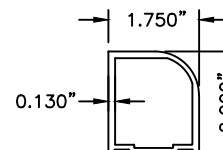
82 TRANSOM VERT.
N.T.S. 6063-T6



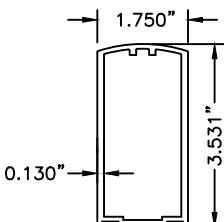
15 STILE LEAD (NARROW)
N.T.S. 6063-T6



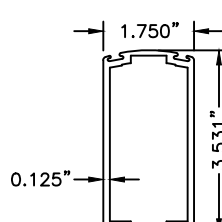
11 STILE FIXED (NARROW)
N.T.S. 6063-T6



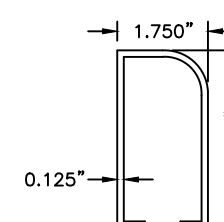
13 STILE PIVOT (NARROW)
N.T.S. 6063-T6



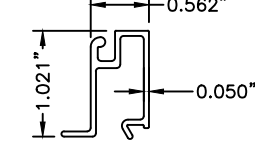
12 STILE LEAD (MEDIUM)
N.T.S. 6063-T6



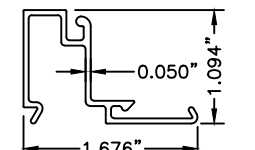
16 STILE LOCK (MEDIUM)
N.T.S. 6063-T6



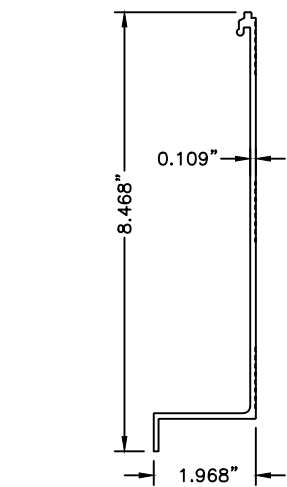
14 STILE PIVOT (MEDIUM)
N.T.S. 6063-T6



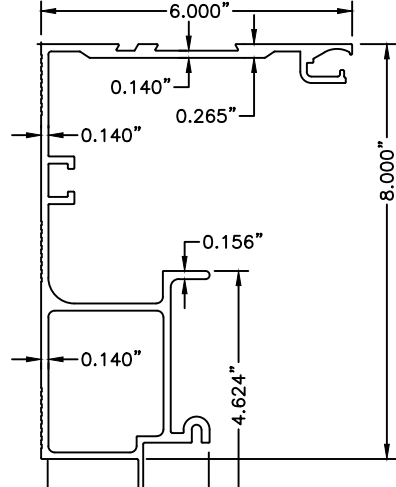
83 TRANSOM STOP
N.T.S. 6063-T6
HEADER



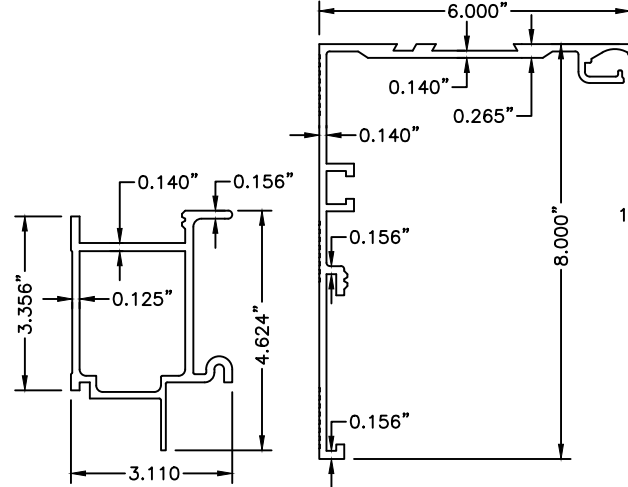
84 TRANSOM 1/4" GUTTER
N.T.S. 6063-T6
HEADER



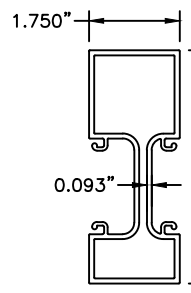
6 HEADER COVER
N.T.S. 6063-T6



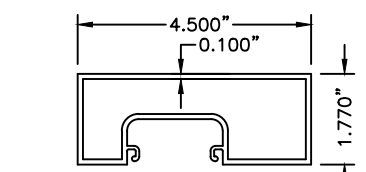
4 HEADER
N.T.S. 6063-T6



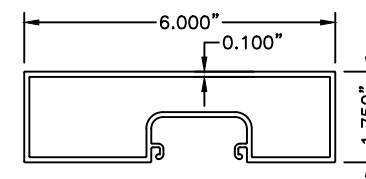
5 HEADER (2 PC.)
N.T.S. 6063-T6



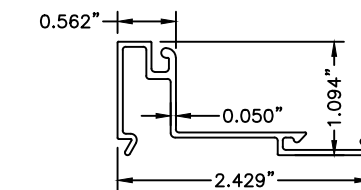
80 TRANSOM VERT.
N.T.S. 6063-T6



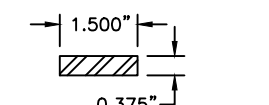
1 JAMB 4 1/2
N.T.S. 6063-T6



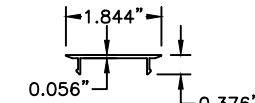
2 JAMB 6
N.T.S. 6063-T6



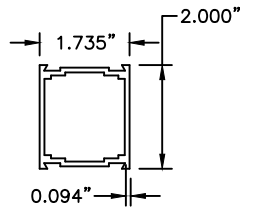
89 TRANSOM IG GUTTER
N.T.S. 6063-T6
HEADER



74 STEEL PANIC REINFORCING
N.T.S. ASTM A-36



3 JAMB INSERT
N.T.S. 6063-T6



17 MUNTIN BAR
N.T.S. 6063-T6



POSTAL ADDRESS:
401 W. ATLANTIC AVE. R10 #219
DELRAY BEACH, FL 33444
ENGINEERINGEXPRESS.COM

65 SCOTT SWAMP ROAD
FARMINGTON, CT 06032



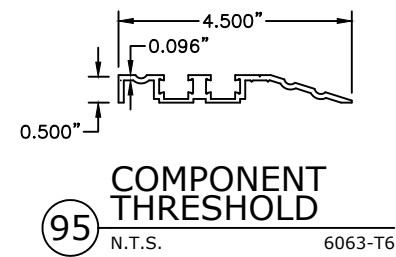
ACCESS TECHNOLOGIES
SERIES "DURA-STORM 2000/3000" AUTO SGD
BI-PARTING/SINGLE SLIDE (NI)
TDI-EVALUATION REPORT

DRWN	CHKD	DATE
SSQ	RS	07/05/22

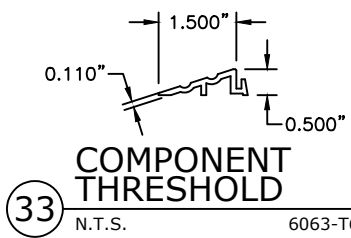
COPYRIGHT ENGINEERING EXPRESS®
22-53510
SCALE: NTS UNLESS NOTED

DURA-STORM SERIES 2000/3000 EXTRUSIONS

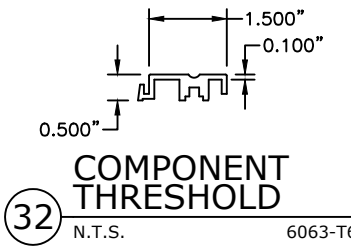
Frank Bennardo
PE# 96064 CA# F-11383



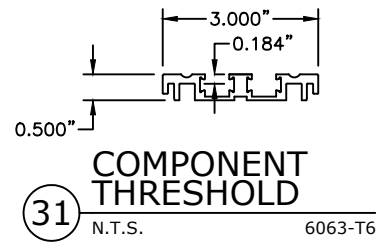
95 COMPONENT THRESHOLD
N.T.S. 6063-T6



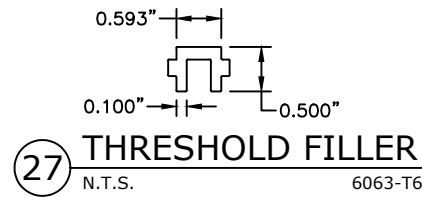
33 COMPONENT THRESHOLD
N.T.S. 6063-T6



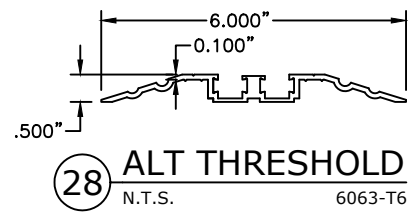
32 COMPONENT THRESHOLD
N.T.S. 6063-T6



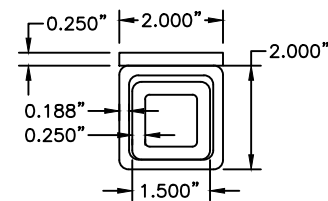
31 COMPONENT THRESHOLD
N.T.S. 6063-T6



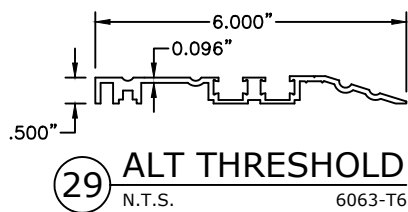
27 THRESHOLD FILLER
N.T.S. 6063-T6



28 ALT THRESHOLD
N.T.S. 6063-T6

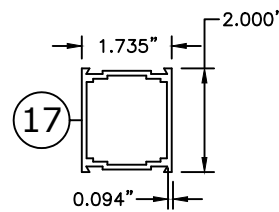


73 TRANSOM STIFFENER
N.T.S. SINGLE SLIDE ASTM A500

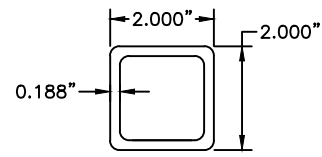


29 ALT THRESHOLD
N.T.S. 6063-T6

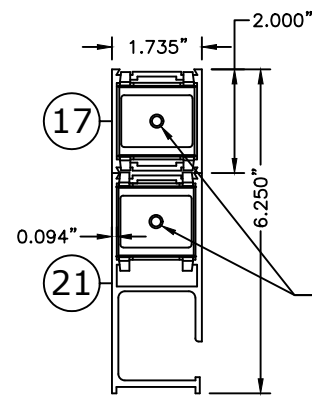
101 NESTED TRANSOM STIFFENER
N.T.S. BI-PARTING ASTM A500



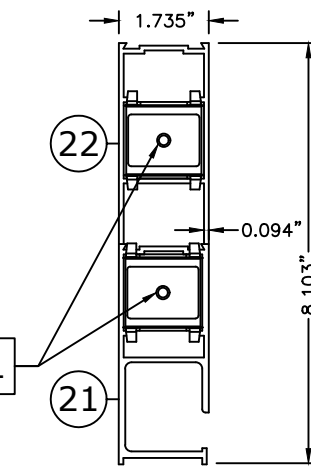
17 MUNTIN BAR
N.T.S. 6063-T6



73 TRANSOM STIFFENER
N.T.S. SINGLE SLIDE ASTM A500

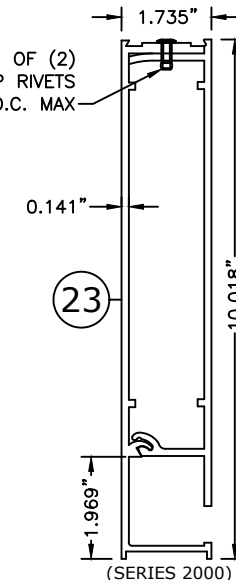


17 STACKED BOTTOM RAIL, O
N.T.S. 6063-T6

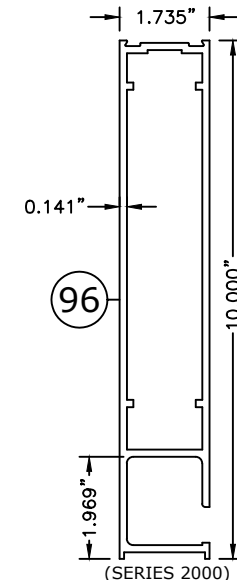


21 STACKED BOTTOM RAIL, O
N.T.S. 6063-T6

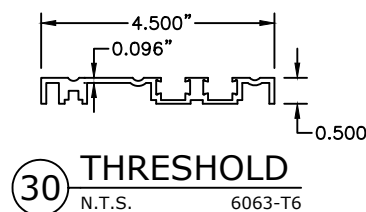
MIN. OF (2)
3/16" POP RIVETS
@ 22" O.C. MAX



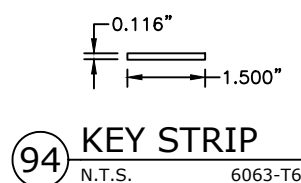
23 BOTTOM RAIL, O
N.T.S. 2-PIECE 6063-T6



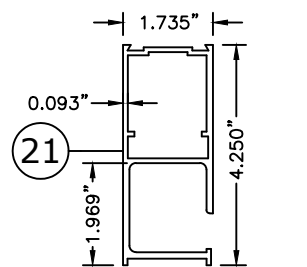
96 BOTTOM RAIL, O
N.T.S. 1-PIECE 6063-T6



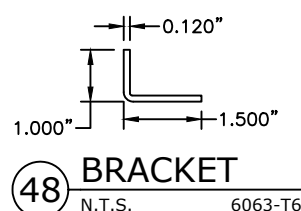
30 THRESHOLD
N.T.S. 6063-T6



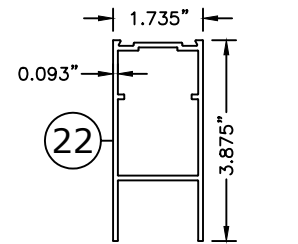
94 KEY STRIP
N.T.S. 6063-T6



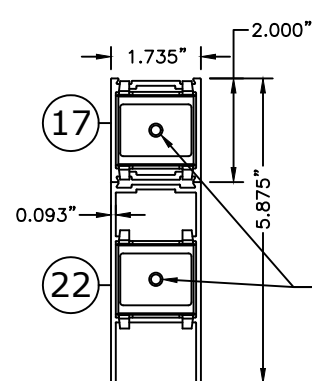
21 BOTTOM RAIL, O
N.T.S. 6063-T6



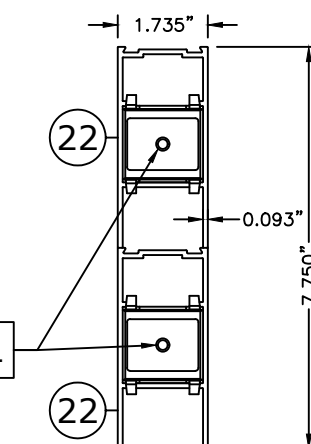
48 BRACKET
N.T.S. 6063-T6



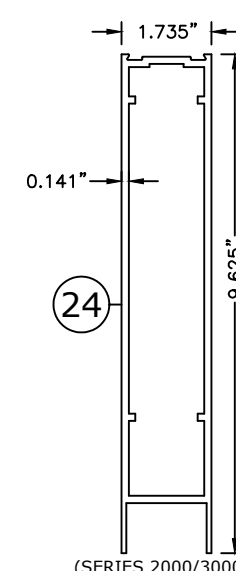
22 BOTTOM RAIL, SX/SO
N.T.S. 6063-T6



17 STACKED BOTTOM RAIL, SX/SO
N.T.S. 6063-T6

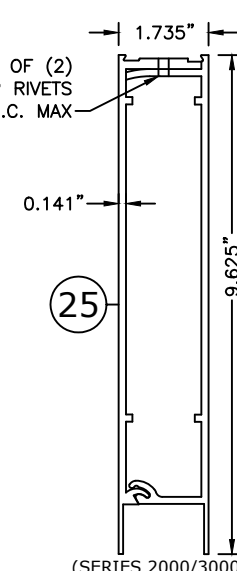


22 STACKED BOTTOM RAIL, SX/SO
N.T.S. 6063-T6

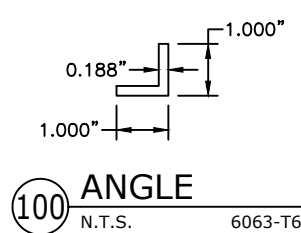


24 BOTTOM RAIL, SX/SO
N.T.S. 1-PIECE 6063-T6

MIN. OF (2)
3/16" POP RIVETS
@ 22" O.C. MAX



25 BOTTOM RAIL, SX/SO
N.T.S. 2-PIECE 6063-T6



100 ANGLE
N.T.S. 6063-T6

ENGINEERING EXPRESS
POSTAL ADDRESS:
401 W. ATLANTIC AVE. R10 #219
DELRAY BEACH, FL 33444
ENGINEERINGEXPRESS.COM

65 SCOTT SWAMP ROAD
FARMINGTON, CT 06032

STANLEY Security
ACCESS TECHNOLOGIES

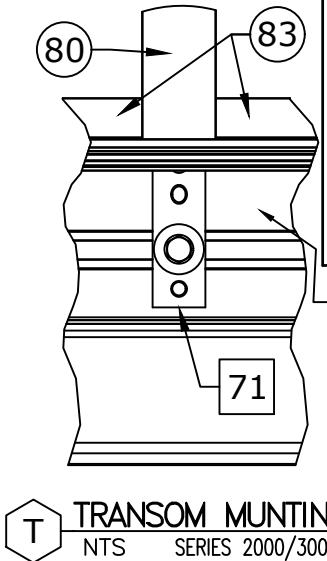
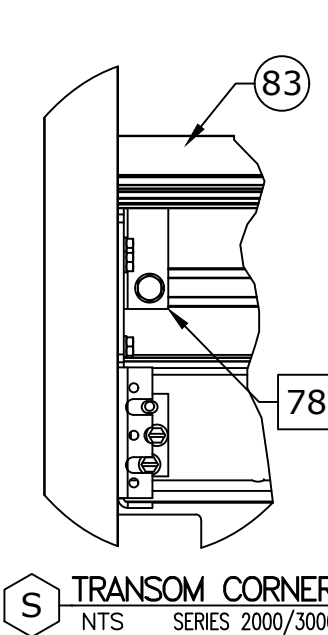
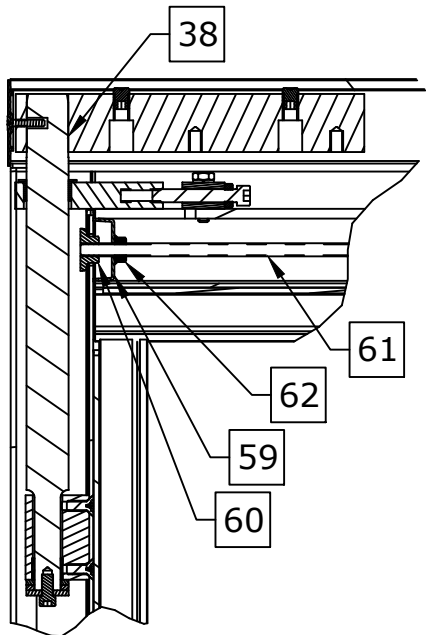
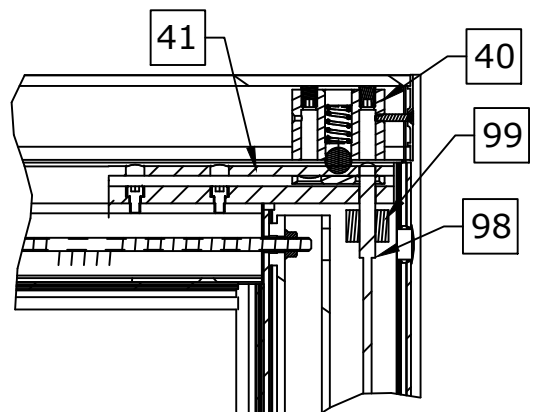
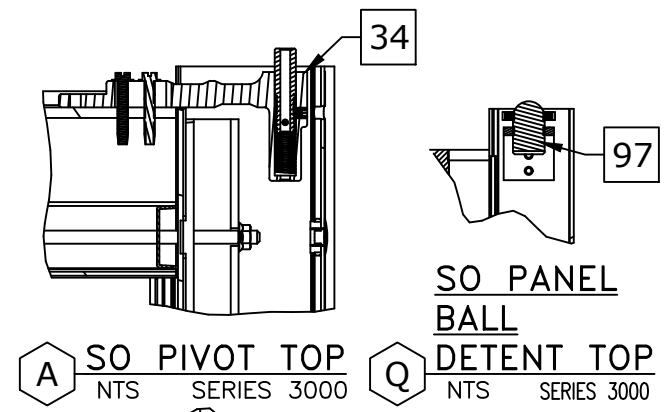
REMARKS	DRWN	CHKD	DATE
INIT ISSUE	SSQ	RS	07/05/22

COPYRIGHT ENGINEERING EXPRESS®
22-53510
SCALE: NTS UNLESS NOTED

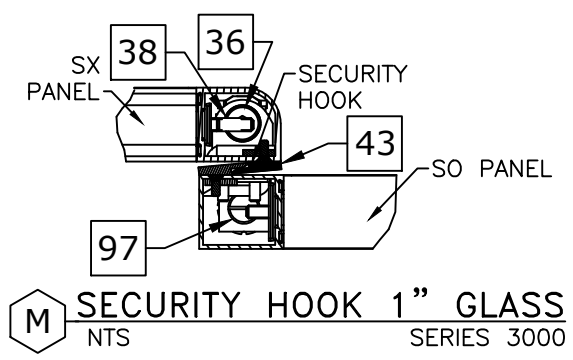
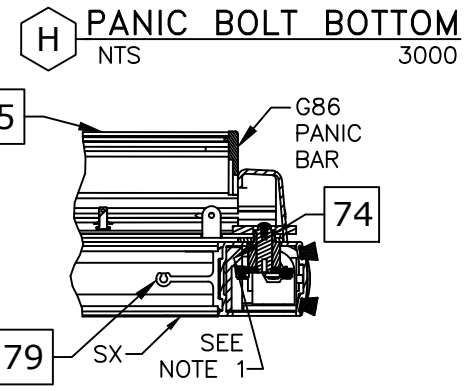
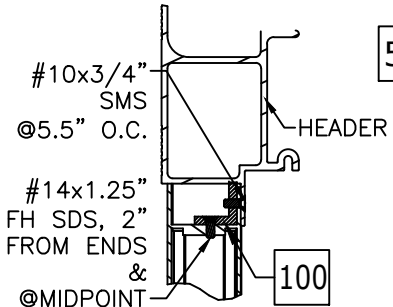
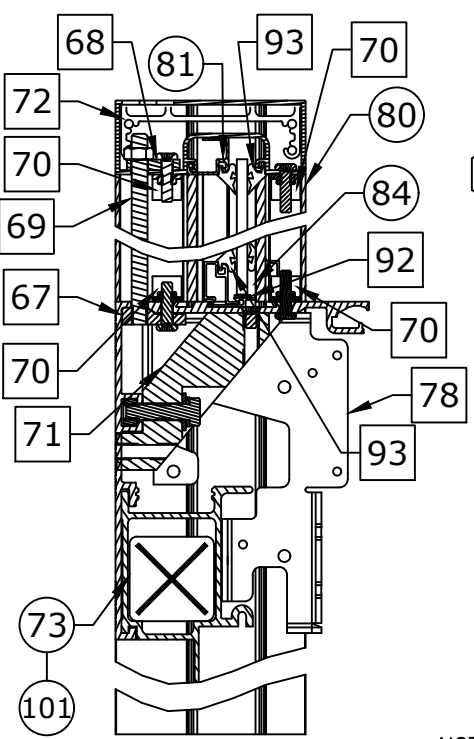
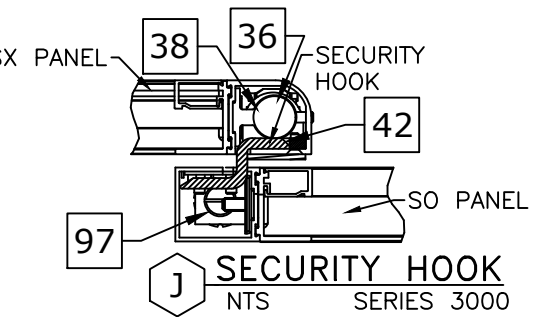
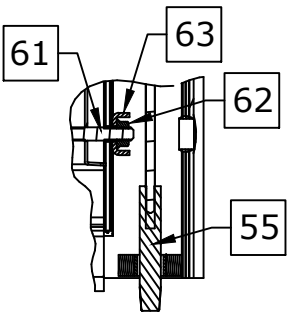
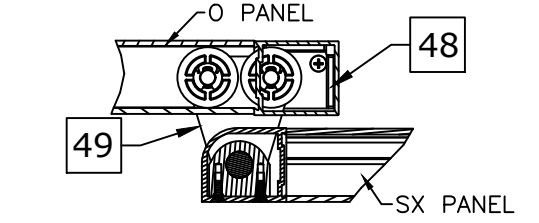
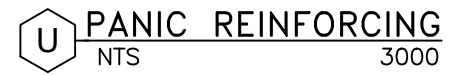
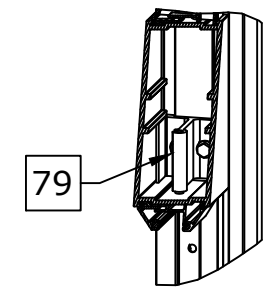
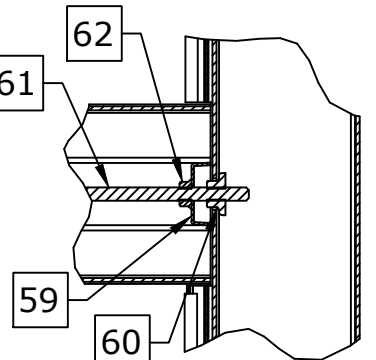
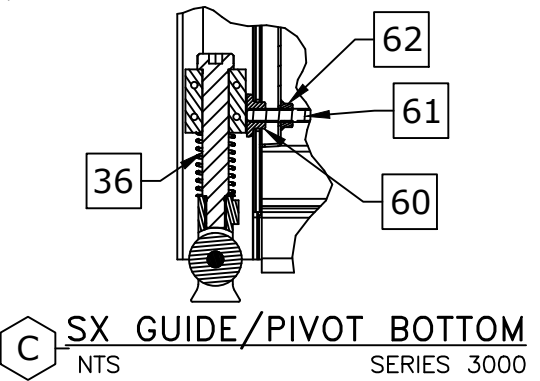
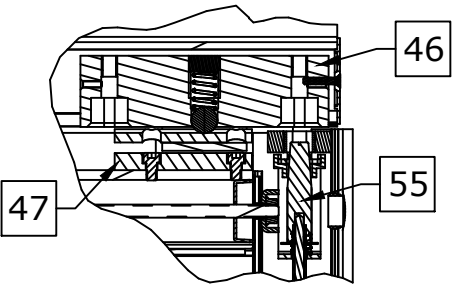
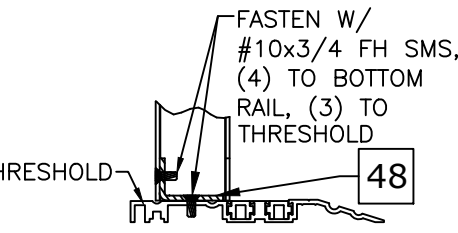
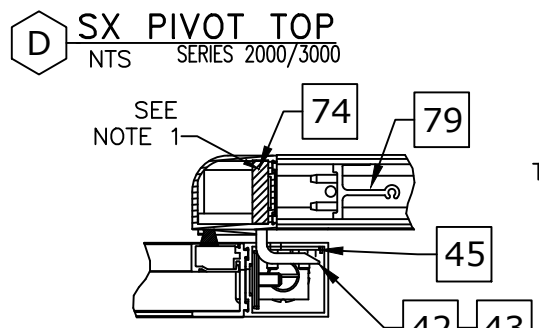
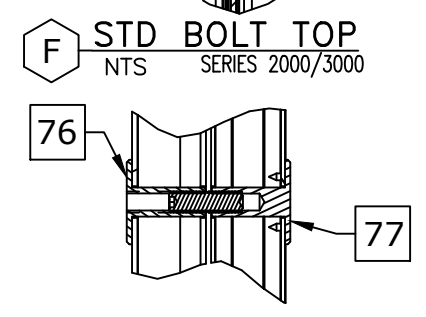
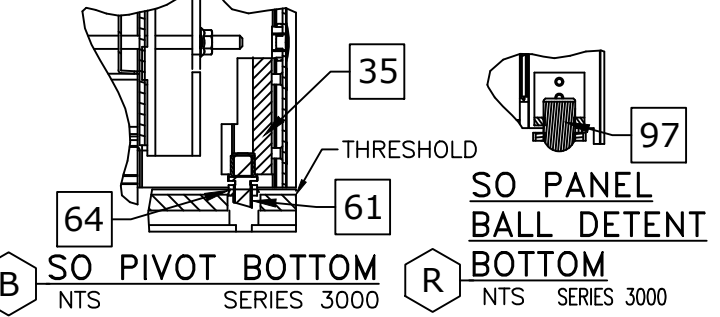
8/10/2022 11:25 AM SAM c:\users\sam\engineering\express\production - documents\projects\22-53510 update tdi 1030 - 18-6976a - noa 20-1216.25, 20-33204\work\drawings & cad\22-53510 durastorm 3000 (n) - tdi.dwg

DURA-STORM SERIES 2000/3000 DETAILS

Frank Bennardo
PE# 96064 CA# F-11383



INTERIOR OF HEADER



NOTES
1. ITEM 74, "STEEL PLATE-PANIC REINFORCING", IS CONTAINED WITHIN VERTICAL STILE, HAS A MINIMUM LENGTH OF 48", AND IS CENTERED VERTICALLY ABOUT CENTERLINE OF HORIZONTAL MUNTIN. ITEM 74 IS FASTENED AS FOLLOWS: SINGLE ROW #10 X 32 X 1/2" FHTCMS @ 6" OC.

ENGINEERING EXPRESS
POSTAL ADDRESS:
401 W. ATLANTIC AVE. R10 #219
DELRAY BEACH, FL 33444
ENGINEERINGEXPRESS.COM

65 SCOTT SWAMP ROAD
FARMINGTON, CT 06032

STANLEY Security
ACCESS TECHNOLOGIES

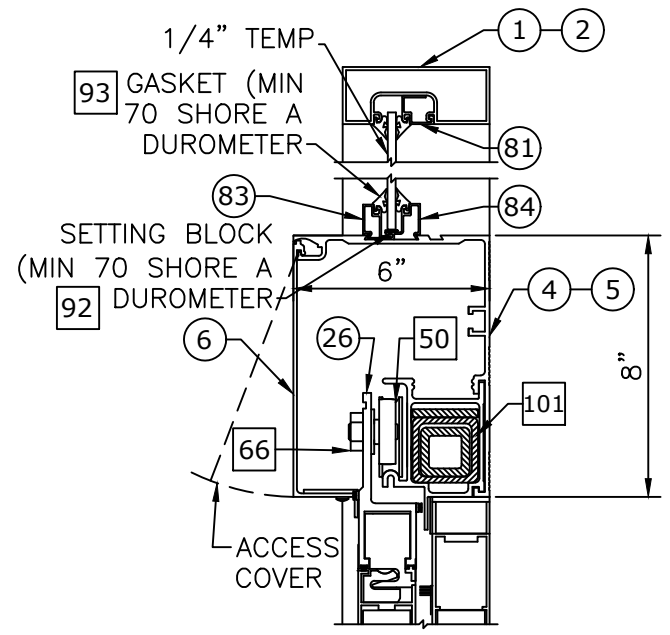
DATE	DRWN	CHKD	ISSQ	RS
07/05/22				

22-53510
SCALE: NTS UNLESS NOTED

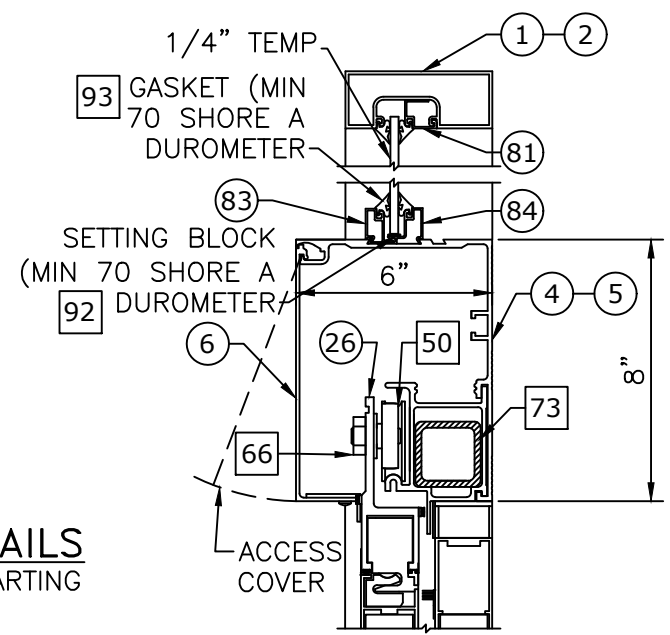
c:\users\sam\engineering\express\production - documents\projects\22-53510 update tdi_1030 - 18-6976a - noa 20-121625_20-33204\work\drawings & cad\22-53510 durastorm 3000 (nt) - tdi.dwg 8/10/2022 11:25 AM SAM

DURA-STORM SERIES 2000/3000 TRANSOM GLAZING DETAILS

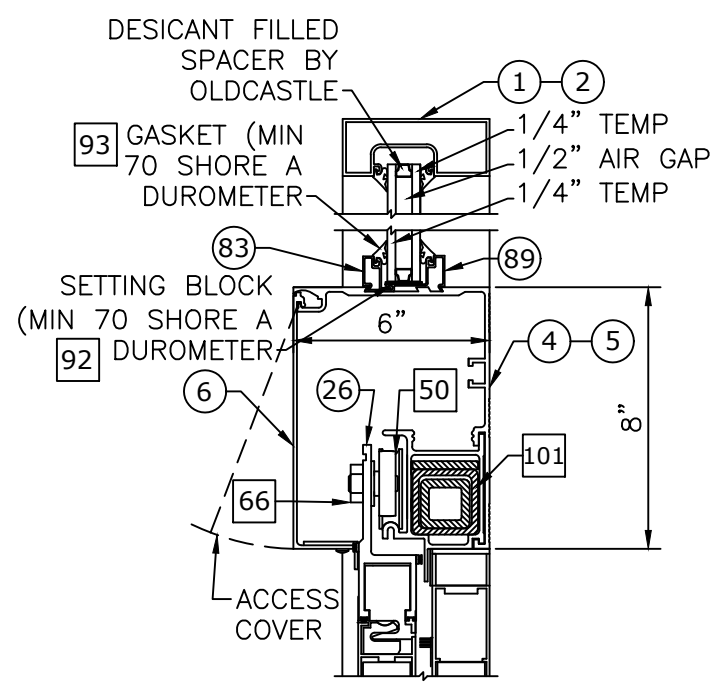
Frank Bennardo
PE# 96064 CA# F-11383



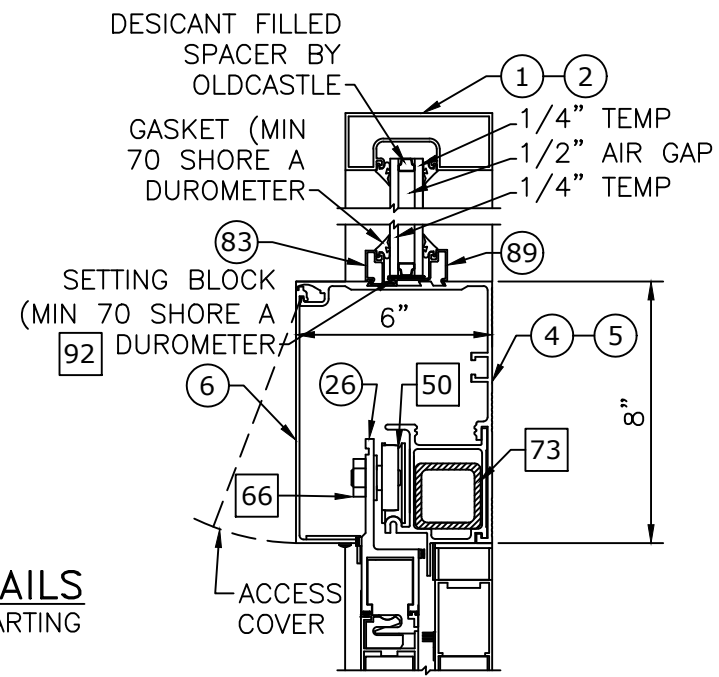
NON-IMPACT TRANSOM GLAZING DETAILS
NTS 1/4" TEMPERED V SECTION BI-PARTING



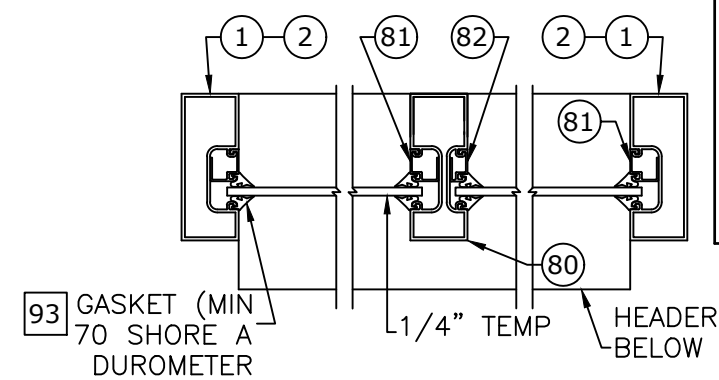
NON-IMPACT TRANSOM GLAZING DETAILS
NTS 1/4" TEMPERED V SECTION SINGLE SLIDE



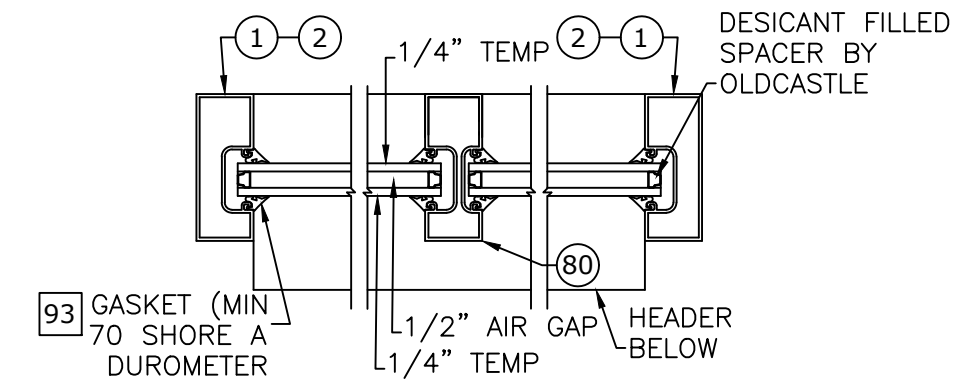
NON-IMPACT TRANSOM GLAZING DETAILS
NTS 1" INSULATED V SECTION BI-PARTING



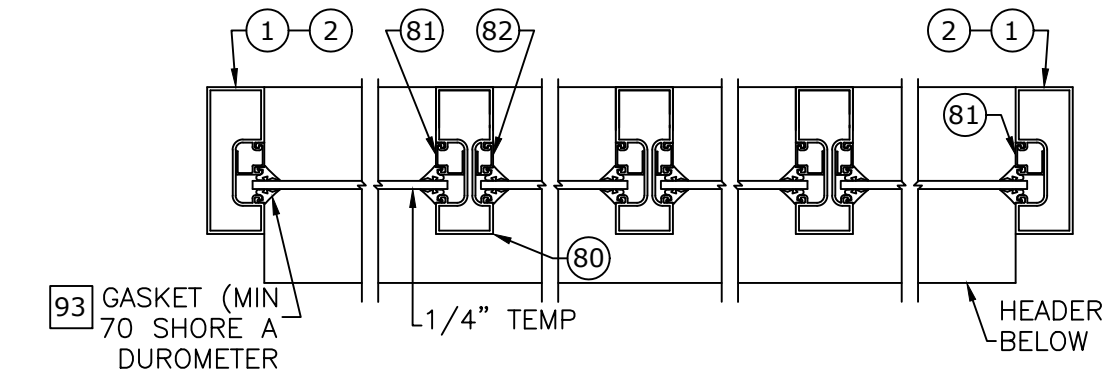
NON-IMPACT TRANSOM GLAZING DETAILS
NTS 1" INSULATED V SECTION SINGLE SLIDE



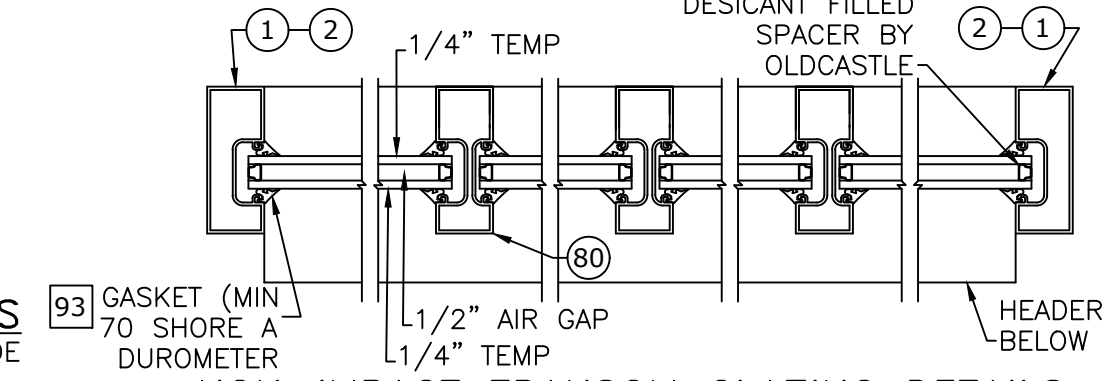
NON-IMPACT TRANSOM GLAZING DETAILS
NTS 1/4" TEMPERED H SECTION SINGLE SLIDE



NON-IMPACT TRANSOM GLAZING DETAILS
NTS 1" INSULATED H SECTION SINGLE SLIDE



NON-IMPACT TRANSOM GLAZING DETAILS
NTS 1/4" TEMPERED H SECTION BI-PARTING



NON-IMPACT TRANSOM GLAZING DETAILS
NTS 1" INSULATED H SECTION BI-PARTING

NOTES
1. SEE SHEET 18 FOR DOOR PANEL GLAZING DETAILS.

ENGINEERING EXPRESS
POSTAL ADDRESS:
401 W. ATLANTIC AVE. R10 #219
DELRAY BEACH, FL 33444
ENGINEERINGEXPRESS.COM

65 SCOTT SWAMP ROAD
FARMINGTON, CT 06032

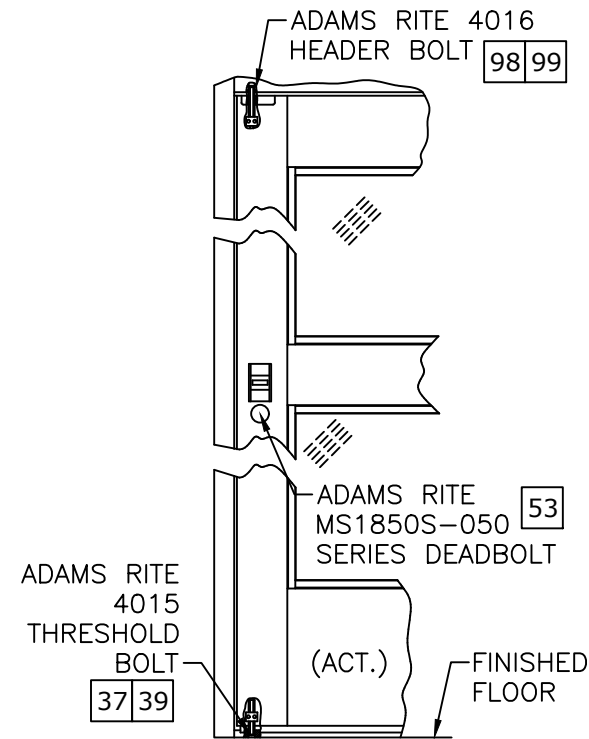
STANLEY Security
ACCESS TECHNOLOGIES
SERIES "DURA-STORM 2000/3000" AUTO SGD
BI-PARTING/SINGLE SLIDE (NI)
TDI-EVALUATION REPORT

DATE	DRWN	CHKD	ISSQ	RS	RS	RS	RS	RS	RS	REMARKS
07/05/22										INIT ISSUE

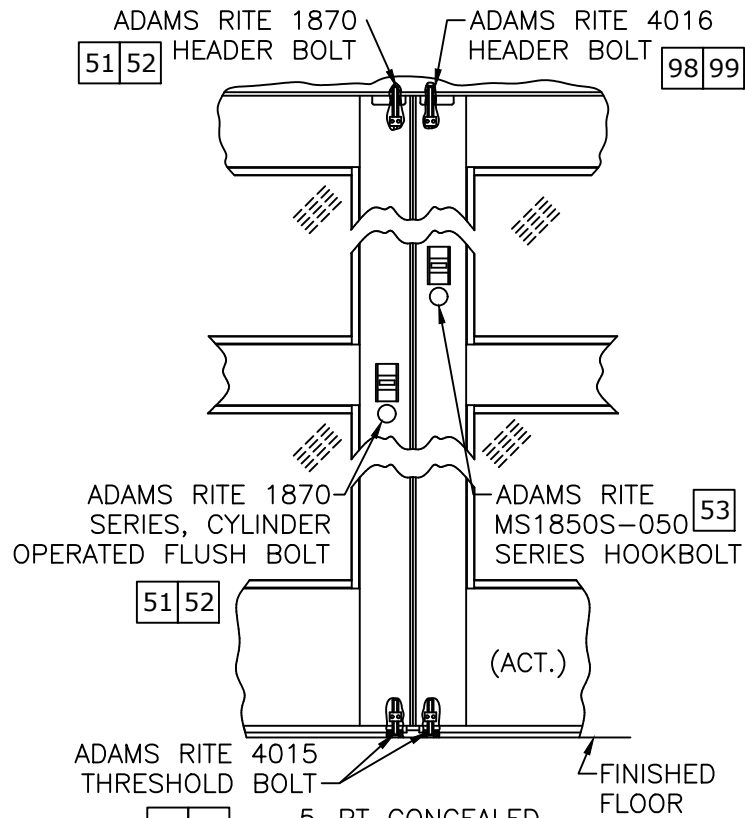
COPYRIGHT ENGINEERING EXPRESS®
22-53510
SCALE: NTS UNLESS NOTED

DURA-STORM SERIES 2000/3000 LOCKING ARRANGEMENTS

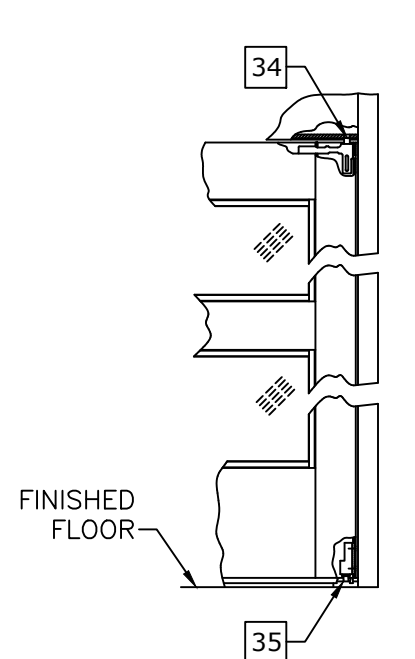
Frank Bennardo
PE# 96064 CA# F-11383



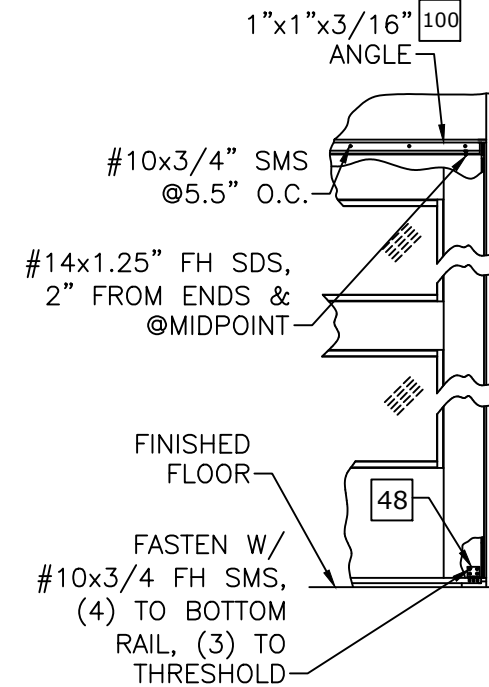
3-PT CONCEALED LOCKING SYSTEM
SERIES 2000/3000
SINGLE SLIDE



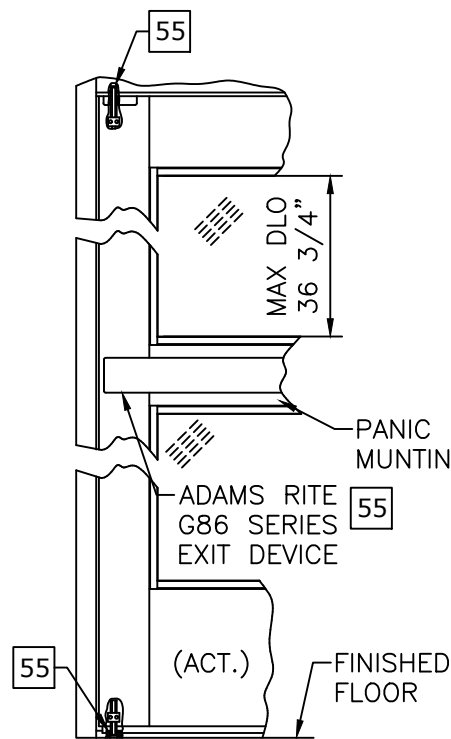
5-PT CONCEALED LOCKING SYSTEM
SERIES 2000/3000
BI-PARTING



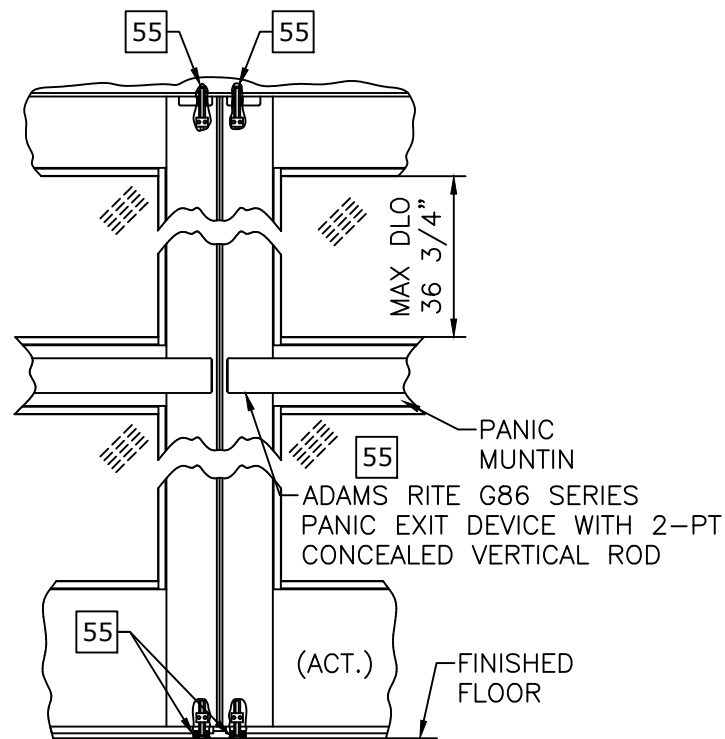
SERIES 3000
SO-PANEL



SERIES 2000
O-PANEL



2-PT CONCEALED VERTICAL ROD WITH PANIC RELEASE LOCKING SYSTEM
SERIES 3000
SINGLE SLIDE



4-PT CONCEALED VERTICAL ROD WITH PANIC RELEASE LOCKING SYSTEM
SERIES 3000
BI-PARTING

ENGINEERING EXPRESS
POSTAL ADDRESS:
401 W. ATLANTIC AVE. R10 #219
DELRAY BEACH, FL 33444
ENGINEERINGEXPRESS.COM

65 SCOTT SWAMP ROAD
FARMINGTON, CT 06032

STANLEY Security
ACCESS TECHNOLOGIES
SERIES "DURA-STORM 2000/3000" AUTO SGD
BI-PARTING/SINGLE SLIDE (NI)
TDI-EVALUATION REPORT

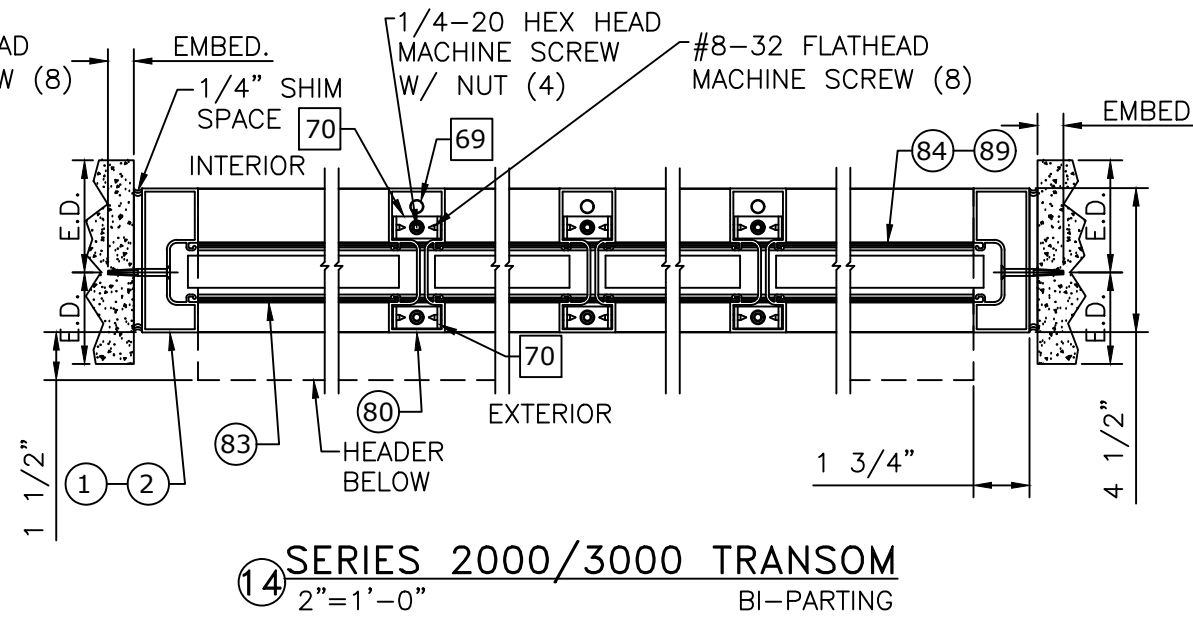
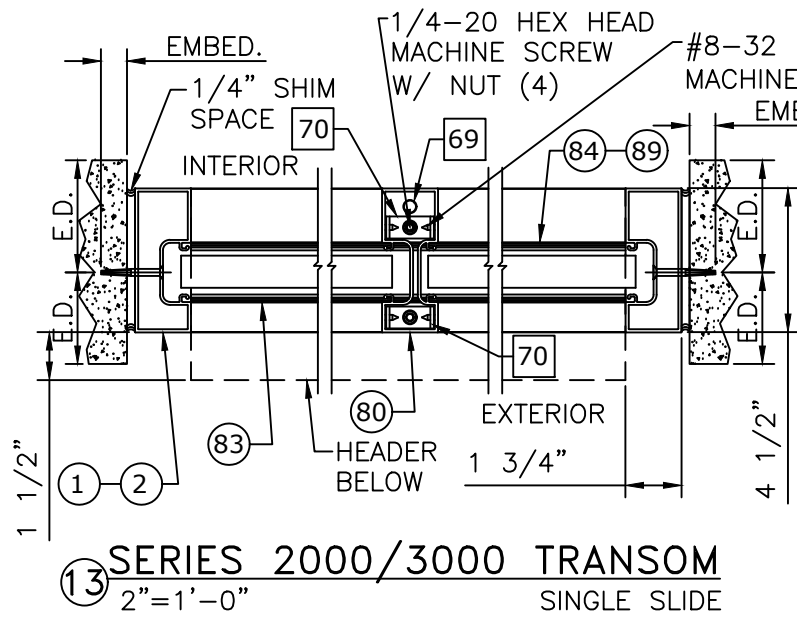
REMARKS	DATE
INIT ISSUE	07/05/22
DRWN	CHKD
SSQ	RS

COPYRIGHT ENGINEERING EXPRESS®
22-53510
SCALE: NTS UNLESS NOTED

c:\users\sam\engineering\express\production - documents\projects\22-53510 update tdi 1030 - 18-6976a - noa 20-1216.25, 20-33204\work\drawings & cad\22-53510 durastorm 3000 (ni) - tdi.dwg

DURA-STORM SERIES 2000/3000 HORIZONTAL SECTION AND ANCHORING, TRANSOMS

Frank Bennardo
PE# 96064 CA# F-11383



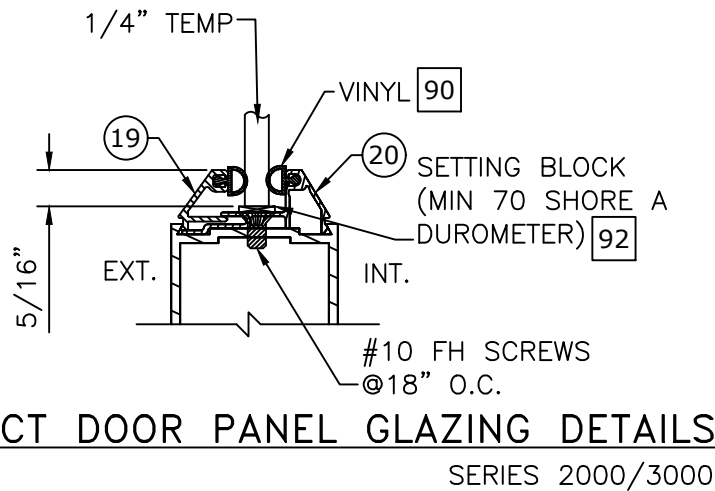
- (XX) : EXTRUSION
- (XX)(XX) : EXTRUSION, MULTI-PIECE
- (XX)-(XX) : EXTRUSION, OPTION
- (XX) : PART
- (XX)(XX) : PART, MULTI-PIECE
- (XX)-(XX) : PART, OPTION
- (XX) : DETAIL
- (XX)-(XX) : DETAIL, OPTION

13 SERIES 2000/3000 TRANSOM
2"=1'-0" SINGLE SLIDE

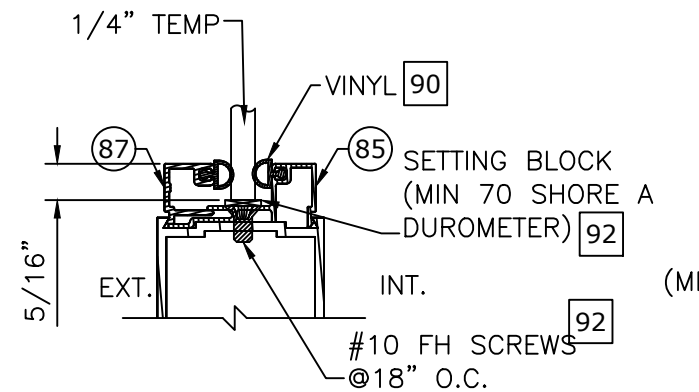
14 SERIES 2000/3000 TRANSOM
2"=1'-0" BI-PARTING

SEE HEAD ANCHORS SHEET 7,
AND THRESHOLD ANCHORS
SHEET 12. THRESHOLD
ANCHORS APPLICABLE ONLY
TO 3KSI CONCRETE.

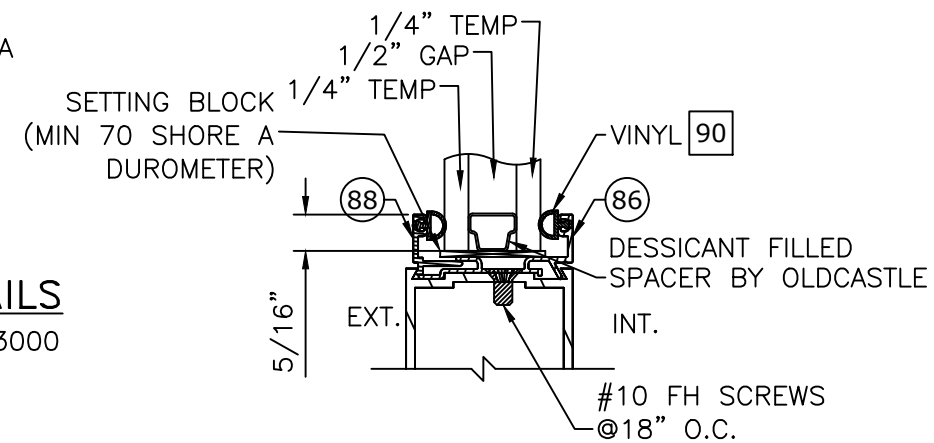
DURA-STORM SERIES 2000/3000 DOOR PANEL GLAZING DETAILS



NON-IMPACT DOOR PANEL GLAZING DETAILS
NTS SERIES 2000/3000



NON-IMPACT DOOR PANEL GLAZING DETAILS
NTS SERIES 2000/3000



NON-IMPACT DOOR PANEL GLAZING DETAILS
NTS SERIES 2000/3000

ENGINEERING EXPRESS
POSTAL ADDRESS:
401 W. ATLANTIC AVE. R10 #219
DELRAY BEACH, FL 33444
ENGINEERINGEXPRESS.COM

65 SCOTT SWAMP ROAD
FARMINGTON, CT 06032

STANLEY Security
ACCESS TECHNOLOGIES

SERIES "DURA-STORM 2000/3000" AUTO SGD
BI-PARTING/SINGLE SLIDE (NT)
TDI-EVALUATION REPORT

DRWN	CHKD	DATE
SSQ	RS	07/05/22

REMARKS
INIT ISSUE
COPYRIGHT ENGINEERING EXPRESS®
22-53510
SCALE: NTS UNLESS NOTED

NOTES
1. SEE SHEET 16 FOR TRANSOM GLAZING DETAILS.

8/10/2022 11:25 AM SAM c:\users\sam\engineering\express\production - documents\projects\22-53510 update.tdi_1030 - 18-6976a - noa 20-1216.25, 20-33204\work\drawings & cad\22-53510 durastorm 3000 (nt) - tdi.dwg

DURA-STORM SERIES 2000/3000 BILL OF MATERIALS

Frank Bennardo
PE# 96064 CA# F-11383



REFERENCE	DESCRIPTION
1	Extrusion - Jamb - 4 1/2"
2	Extrusion - Jamb - 6"
3	Extrusion - Jamb - Insert
4	Extrusion - Header - 1 PC
5	Extrusion - Header - 2 PC
6	Extrusion - Header Cover -
7	Extrusion - Top Rail - O, SO
8	Extrusion - Top Rail - O, SO
9	Extrusion - Top Rail - SX
10	Extrusion - Top Rail - SX
11	Extrusion - Stile - Fixed
12	Extrusion - Stile - Lead
13	Extrusion - Stile - Pivot
14	Extrusion - Stile - Pivot
15	Extrusion - Stile - Lead
16	Extrusion - Stile - Lock
17	Extrusion - Muntin Bar/Stacked Bottom Rail Part - 2"
18	Extrusion - Muntin Bar - 4 1/4"
19	Extrusion - Panel Glass Stop - 1/4" - Horizontal
20	Extrusion - Panel Glass Gutter - 1/4" - Horizontal
21	Extrusion - Bottom Rail O - 4"
22	Extrusion - Bottom Rail SO/SX4"
23	Extrusion - Bottom Rail O - 10" - 2 PC
24	Extrusion - Bottom Rail SX/SO - 1 PC - 10"
25	Extrusion - Bottom Rail SX/SO - 2 PC - 10"
26	Extrusion - Hanger -
27	Extrusion - Threshold - Filler
28	Extrusion - Threshold - Dbl bevel - 6"
29	Extrusion - Threshold - Sq/Bvl - 6"
30	Extrusion - Threshold - Recessed - 4.5"
31	Extrusion - Threshold - Core
32	Extrusion - Threshold - Square
33	Extrusion - Threshold - Bevel
34	Component - Top Pivot - SO - 3000
35	Component - Bottom Pivot - SO - 3000
36	Component - Bottom Guide - SX- 2000/3000
37	Component - Throw Bolt - Std - Adams Rite 4015
38	Component - Top pivot - SX
39	Component - Guide - Throw Bolt - Adams Rite 4015
40	Component - Ball Detent - Std
41	Component - Detent Block - Std
42	Component - Security Hook - Std
43	Component - Security Hook - 1" Glass
45	Component - Backing Plate - Security Hook
46	Component - Ball Detent
47	Component - Detent Block
48	Component - Bracket - O Panel
49	Component - Bottom Guide - SX - 2000
50	Component - Load Wheel - Steel/Aluminum/Plastic
51	Component - Lock - Cylinder - Adams Rite 1870 (2-PT Lock) or Adams Rite MS1850S-050 (3-PT Lock)
52	Component - Lock - Thumb Turn - Adams Rite 1870 (2-PT Lock) or Adams Rite MS1850S-050 (3-PT Lock)

NON-CALL OUT PART # 44 IS NOT PART OF BOM

REFERENCE	DESCRIPTION
53	Component - 8 Ply Multipoint Lock - Single Action - Adams Rite MS1850S-050 (Deadbolt), Used w/ Adams Rite 4015 and 4016 Bolts
54	Component - Exit Indicator -
55	Component - 2-Pt Panic Device - Adams Rite G86 with concealed vertical rod (top/bottom) and latch assembly.
56	Component - Pile - Adhesive/non Adhesive backed
57	Component - Brush - Sweep
58	Component - Foam Block -
59	Hardware - Tie Rod - Plate
60	Hardware - Tie Rod - Nut - 5/16-18 - Steel
61	Hardware - Threaded Rod - 5/16-18 - Steel
62	Hardware - 5/16 - 18 - Nut - Steel
63	Hardware - Tie Rod / Rail - Plate - Steel
64	Hardware - 7/16-20 Jamb Nut - Steel
65	Hardware - 7/16 SO Pivot Pin - Steel
66	Hardware - 5/8-11 Nut - Steel
67	Hardware - Tie Rod - Nut Plate
68	Hardware - Tie Rod - Top Clip
69	Hardware - Tie Rod - 3/8-16
70	Hardware - Transom Clip - Steel
71	Hardware - Stiffener - Steel - A500
72	Hardware - Transom Clip - Aluminum
73	Tube - Transom Stiffener - Single Slide - Steel (w/ Optional Transom)
74	Component - Steel Plate - Panic Reinforcing (48" Min.)
75	Component - Key Operator - Adams Rite
76	Component - Lock Flange (Int) - "Wind Clip"
77	Component - Lock Flange (Ext) - "Wind Clip"
78	Component - Header End Plate
79	Component - Muntin Clip (with Panic)
80	Extrusion - Transom - Vertical Muntin
81	Extrusion - Transom - Frame Stop - 1/4"
82	Extrusion - Transom - Vertical Muntin Stop - 1/4"
83	Extrusion - Transom - Header Stop
84	Extrusion - Transom - Header Gutter - 1/4"
85	Extrusion - Panel Glass Gutter - 1/4" - Vertical
86	Extrusion - Panel Glass Gutter - 1"
87	Extrusion - Panel Glass Stop - 1/4" - Vertical
88	Extrusion - Panel Glass Stop - 1"
89	Extrusion - Transom - Header Gutter - 1"
90	Glazing - Vinyl Bulb - 0.200"
91	Glazing - Vinyl Bulb - 0.262"
92	Glazing - Setting Block -
93	Glazing - Gasket - Transom
94	Extrusion - Key Strip
95	Extrusion - Threshold - Sq/Bvl - 4.5"
96	Extrusion - Bottom Rail O - 10"
97	Component - Ball Detent - SO
98	Component - Throw Bolt - Std - Adams Rite 4016
99	Component - Guide - Throw Bolt - Adams Rite 4016
100	Extrusion - 1"x1"x3/16" Angle
101	Nested Tube - Transom Stiffener - Bi-Parting - Steel (w/ Optional Transom)



POSTAL ADDRESS:
401 W. ATLANTIC AVE. R10 #219
DELRAY BEACH, FL 33444
ENGINEERINGEXPRESS.COM

65 SCOTT SWAMP ROAD
FARMINGTON, CT 06032



SERIES "DURA-STORM 2000/3000" AUTO SGD
BI-PARTING/SINGLE SLIDE (NI)
TDI-EVALUATION REPORT

REMARKS	DRWN	CHKD	DATE
INIT ISSUE	SSQ	RS	07/05/22

COPYRIGHT ENGINEERING EXPRESS®

22-53510

SCALE: NTS UNLESS NOTED