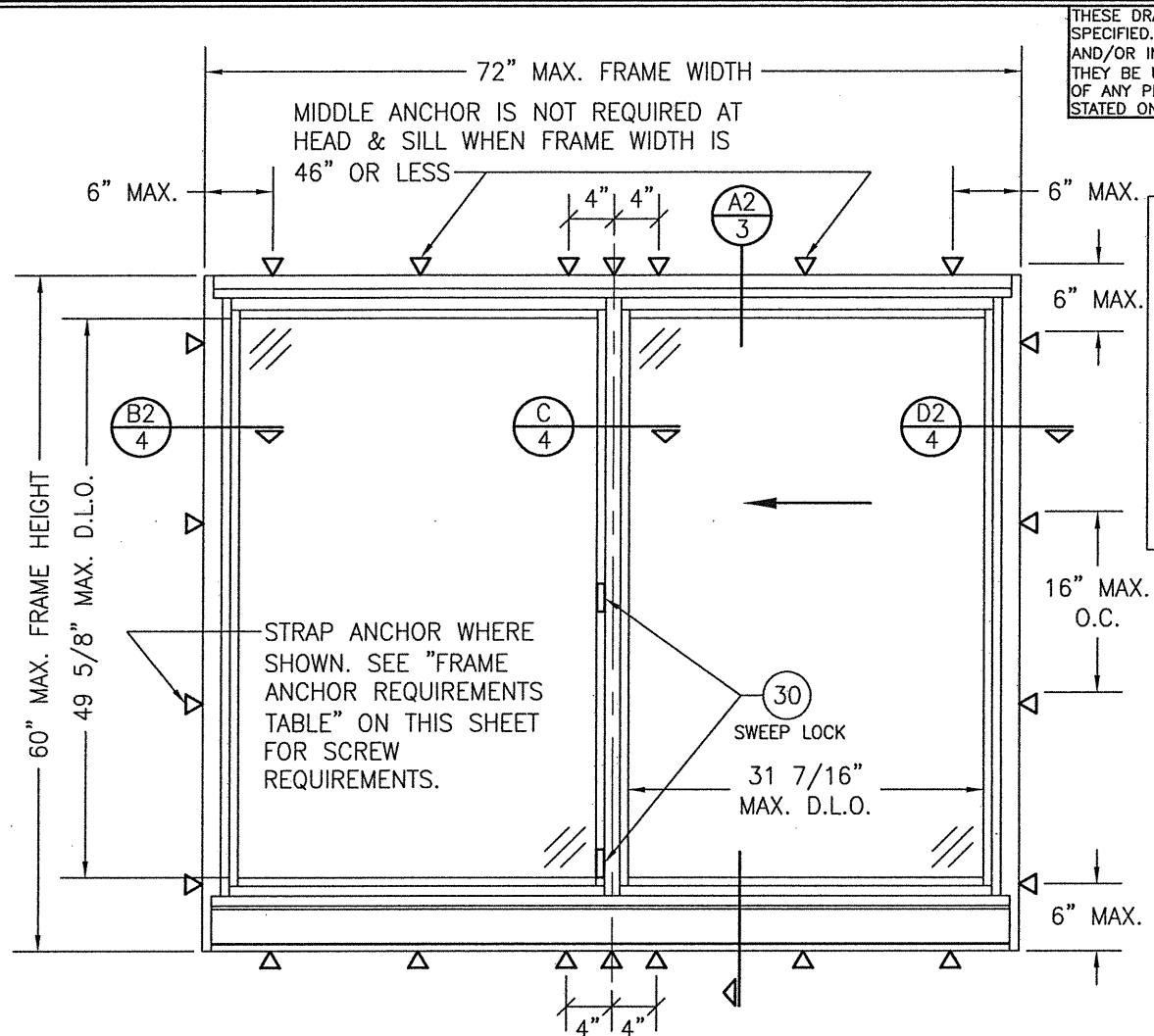


**EXTERIOR ELEVATION; INDIVIDUAL WINDOW  
(RECEPTOR MOUNT CONDITION)**  
SCALE: 3/4" = 1'-0"  
(OX SHOWN, XO ALSO APPLIES)



**EXTERIOR ELEVATION; INDIVIDUAL WINDOW  
(STRAP ANCHOR MOUNT CONDITION)**  
SCALE: 3/4" = 1'-0"  
(OX SHOWN, XO ALSO APPLIES)

THESE DRAWINGS ARE APPLICABLE ONLY TO THE PRODUCT SPECIFIED. THEY MAY NOT BE USED FOR THE ASSEMBLY AND/OR INSTALLATION OF ANY OTHER PRODUCT NOR MAY THEY BE USED FOR RATIONAL AND/OR LOCAL APPROVAL OF ANY PRODUCT NOT PRODUCED BY THE MANUFACTURER STATED ON THESE DRAWINGS.

EVALUATION OF THIS PRODUCT IS BASED ON APPLICABLE STANDARDS AND/OR INFORMATION & RESULTS FROM APPLICABLE TEST REPORTS. THE BUILDING CODE VERSION CONSIDERED WITH THIS EVALUATION WAS THAT IN FORCE AT THE TIME OF THE EVALUATION. IN THE EVENT OF CODE VERSION CHANGES/UPDATES OR IN THE EVENT THAT NEW OR ADDITIONAL TESTING IS COMPLETED ON THIS PRODUCT, PRIOR TO STATING CODE COMPLIANCE, THE MANUFACTURER SHALL CONFIRM WITH THE EVALUATION ENGINEER OF RECORD THAT EVERYTHING SPECIFIED HERE-IN IS CURRENT WITH ALL CURRENT TESTING, CODES AND APPLICABLE STANDARDS.

DRAWN BY:	W.W.S.	CHECKED BY:	W.W.S.
PLOT:	1-16	DATE:	03/03/21

NO.	REVISION DESCRIPTION	DATE

**GENERAL NOTES:**

1. THIS PRODUCT HAS BEEN TESTED, ANALYZED & APPROVED FOR DESIGN PRESSURES NOT TO EXCEED THOSE SHOWN IN THE "ALLOWABLE DESIGN PRESSURE TABLE(S)".
2. OPENINGS, BUCKING & BUCKING FASTENERS MUST BE PROPERLY DESIGNED & INSTALLED TO TRANSFER WIND LOADS TO THE STRUCTURE.
3. ALL HARDWARE & FASTENERS SHALL BE IN ACCORDANCE WITH THESE DRAWINGS & SHALL NOT VARY UNLESS SPECIFICALLY MENTIONED ON THE DRAWINGS. SPECIFIED ANCHOR EMBED TO BASE MATERIAL SHALL BE BEYOND WALL FINISH OR STUCCO.
4. THE DETAILS & SPECIFICATIONS SHOWN HEREIN REPRESENT THE PRODUCTS TESTED & PROPOSED FOR WATER, AIR, IMPACT, CYCLIC & UNIFORM STATIC AIR PRESSURE TESTING IN CONFORMANCE WITH 2018 IBC REFERENCED STANDARDS ASTM E330, E283, E331, F588, E1886 & E1996 FOR LARGE & SMALL MISSILE IMPACT PRODUCTS. ALL TESTING OF THIS PRODUCT TO STANDARDS LESS CURRENT THAN THOSE SPECIFIED IN THE 2018 IBC HAS BEEN DETERMINED EQUIVALENT TO THE MORE CURRENT VERSIONS OF THOSE STANDARDS REFERENCED IN THE 2018 IBC.
5. THIS PRODUCT HAS BEEN DESIGNED IN ACCORDANCE WITH AND MEET THE REQUIREMENTS OF THE 2018 INTERNATIONAL BUILDING CODE (IBC).
6. WHEN GLAZED FOR SMALL MISSILE IMPACT, THIS PRODUCT MAY NOT BE INSTALLED AT ELEVATIONS BELOW 30 FT. ABOVE GRADE OR AT ANY CODE DESIGNATED LARGE MISSILE IMPACT LOCATION WITHOUT AN APPROVED SHUTTER.
7. IMPACT SHUTTERS ARE NOT REQUIRED WITH THIS PRODUCT.
8. ALL ANCHORS SECURING PRODUCT FRAMES TO PRESSURE TREATED BUCKS OR WOOD FRAMING SHALL BE CAPABLE OF RESISTING CORROSION CAUSED BY THE PRESSURE TREATING CHEMICALS IN THE WOOD.
9. DETERMINE THE POSITIVE & NEGATIVE DESIGN LOADS TO USE WHEN REFERENCING THESE DOCUMENTS IN ACCORDANCE WITH THE GOVERNING CODE AND GOVERNING WIND VELOCITY. FOR WIND LOAD CALCULATIONS IN ACCORDANCE WITH THE INTERNATIONAL BUILDING CODE, A DIRECTIONALITY FACTOR OF KD = 0.85 MAY BE APPLIED PER THE ASCE-7 STANDARD.
10. MATERIALS, INCLUDING BUT NOT LIMITED TO STEEL SCREWS, THAT COME INTO CONTACT WITH OTHER DISSIMILAR MATERIALS SHALL BE SEPARATED OR COATED AS REQUIRED TO AVOID CORROSION OF EITHER MATERIAL.
11. TO THE BEST OF OUR KNOWLEDGE, THE PRODUCT SHOWN HEREIN ARE QUALITY ASSURED BY AN APPROVED CERTIFICATION/QA ENTITY & SHALL BE LABELED IN ACCORDANCE WITH APPLICABLE STANDARDS. THESE DRAWINGS SHOW ALL APPLICABLE ELEVATION, COMBINATION, INSTALLATION & COMPARATIVE ANALYSIS CONDITIONS AS DETERMINED THROUGH TESTING & ENGINEERING RATIONAL ANALYSIS. PRODUCT ASSEMBLY SHALL BE IN ACCORDANCE WITH THESE DRAWINGS, THE MANUFACTURER'S QUALITY ASSURANCE SPECIFICATIONS & TESTING REPORTS.
12. CERTIFICATION OF THIS PRODUCT SHALL BE CONSIDERED VOID IF THEY ARE INSTALLED WITHOUT A BUILDING PERMIT FROM THE APPLICABLE LOCAL BUILDING DEPARTMENT OR IF THEY ARE INSTALLED BY ANYONE OTHER THAN A LICENSED CONTRACTOR EXPERIENCED WITH INSTALLATIONS OF THIS TYPE OF PRODUCT.

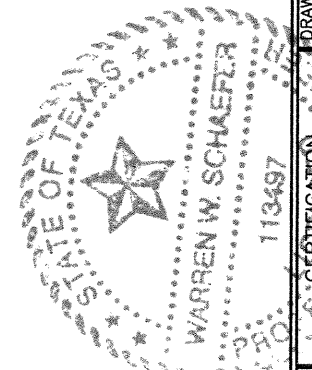
**ALLOWABLE DESIGN PRESSURE  
(SINGLE & MULLED WINDOWS)**  
+/-90 PSF

**CORNER CONSTRUCTION:**

**FRAME HEAD:** VERTICAL MEMBERS ARE COPED, BUTTED AND JOINED TO THE HEAD MEMBER WITH 2 NO. 8 X 1 1/4" PH TORX FASTENERS AND SEALED WITH TREMCO-TREMSIL 600 SEALANT.  
**FRAME SILL:** VERTICAL MEMBERS ARE COPED, BUTTED AND JOINED TO THE SILL MEMBER WITH 4 NO. 8 X 1 1/4" PH TORX FASTENERS AND SEALED WITH TREMCO-TREMSIL 600 SEALANT.  
**SASH:** VERTICAL MEMBERS ARE NOTCHED WHILE THE HORIZONTAL MEMBERS ARE SQUARE CUT, JOINED TO THE VERTICAL MEMBERS WITH A SASH CAM & 2 NO. 8 X 1 1/4" PH TORX FASTENERS AND SEALED WITH TREMCO-TREMSIL 600 SEALANT.

ANCHOR REQUIREMENTS TABLE			
OPENING TYPE (SUBSTRATE)	FRAME TO OPENING FASTENER TYPE	MINIMUM EMBED	MINIMUM EDGE DIST.
RECEPTOR, SUB-SILL, STRAP ANCHOR & MULLION CLIP SCREWS			
MIN. 2X4 WOOD FRAME OR BUCK (MIN. GR. 3 & G=0.55)	NO. 14 SMS OR WOOD SCREW	1 1/4"	3/4"
MIN. 18 GA. 33 KSI METAL STUD	1/4" GR. 5 SELF TAP/DRILL SCREW	FULL	1/2"
MIN. 1/8" THK A36 STEEL	1/4" GR. 5 SELF TAP/DRILL SCREW	FULL	1/2"
MIN. 0.100" THK 6063-T6 ALUM.	1/4" GR. 5 SELF TAP/DRILL SCREW	FULL	1/2"
(2) MIN. C-90 CMU	(1) 1/4" CONCRETE SCREW	1 1/4"	2"
MIN. 3000 PSI CONCRETE	(1) 1/4" CONCRETE SCREW	1 1/2"	2"

- (1) CONCRETE SCREWS SHALL BE ELCO ULTRACONS (C.S.), ELCO CRETE-FLEX (S.S.), ITW RAMSET/RED HEAD TAPCONS (C.S. OR S.S.) OR HILTI KWIK-CON II (C.S OR S.S.).  
(2) CMU IS NOT APPLICABLE AT HEAD & SILL.



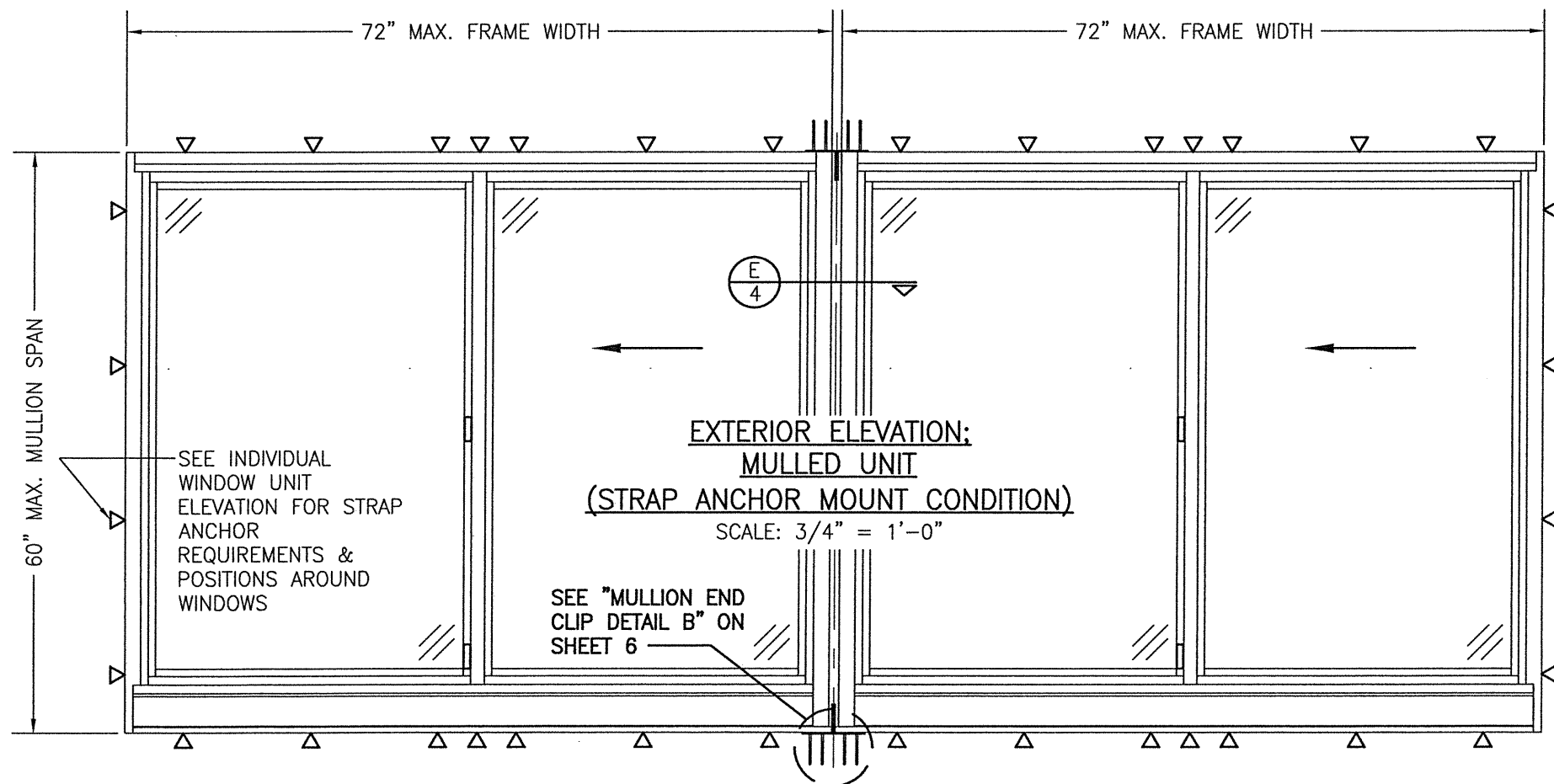
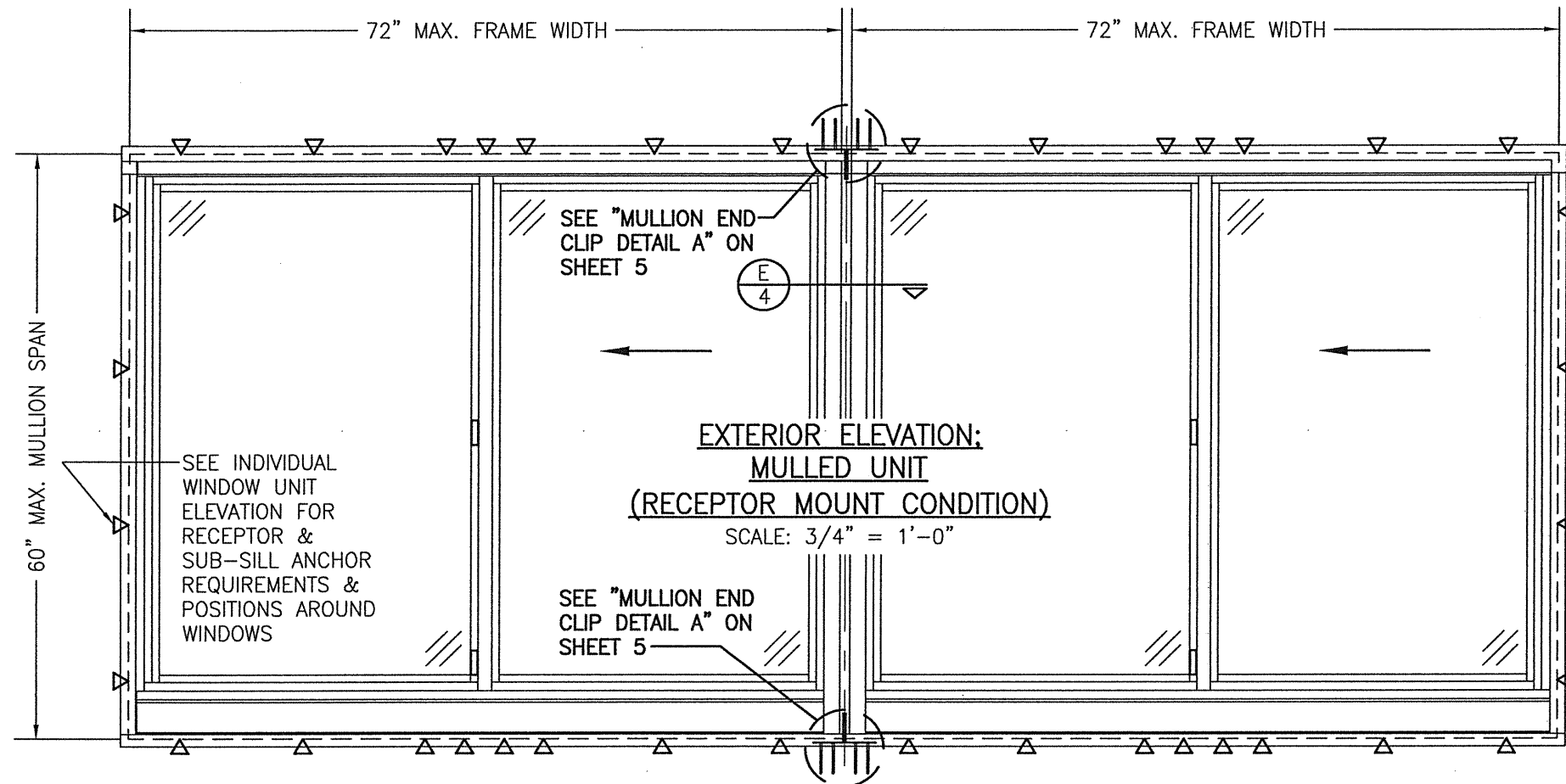
DRAWING TITLE: 8400TL SLIDING GLASS WINDOW (SMALL & LARGE MISSILE IMPACT)

JOB INFORMATION:  
**KAWNEER COMPANY, INC.**  
555 GUTHRIDGE COURT  
NORCROSS, GA 30092  
770-449-5555

CONSULTANTS  
**W. W. SCHAEFER ENGINEERING & CONSULTING, P.A. (REG. NO. F-14980)**  
7480 150TH COURT NORTH  
PALM BEACH GARDENS, FL 33418  
PHONE: 561-744-3424

CERTIFICATION  
MAR 03 2021  
WARREN W. SCHAEFER, P.E.  
P.E. NO. 113497

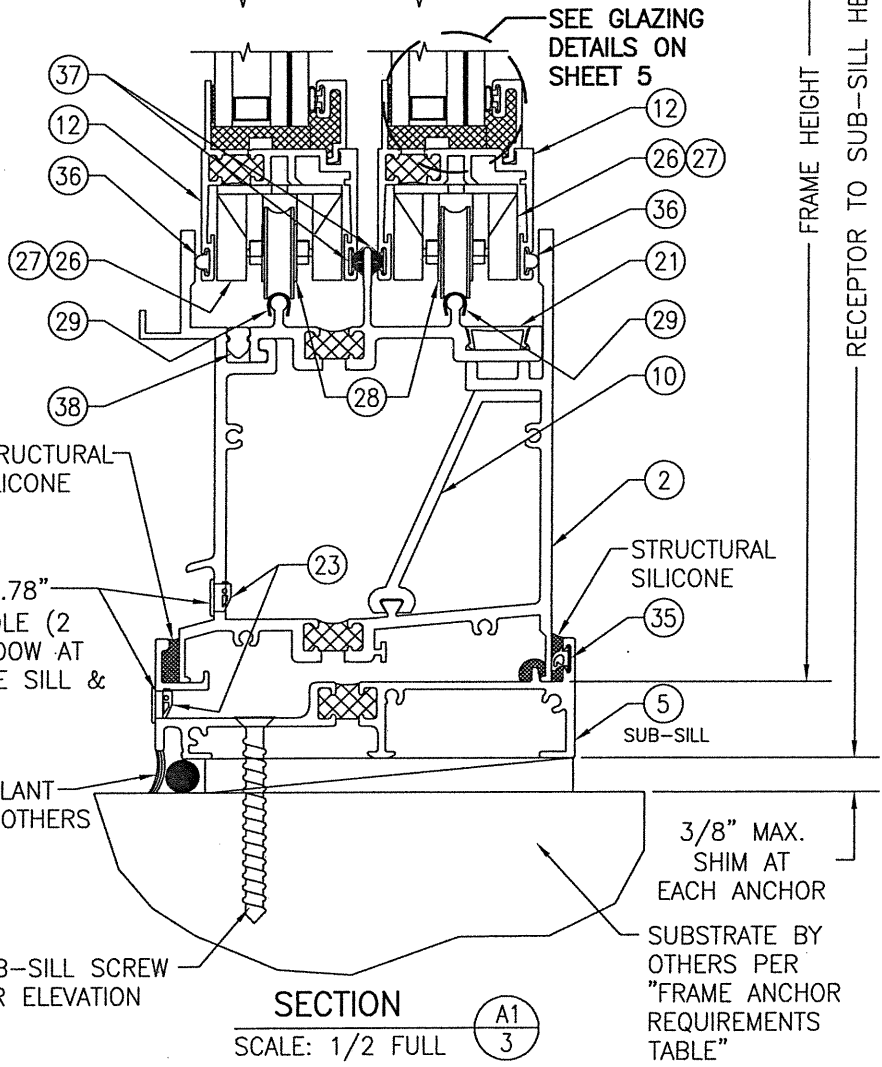
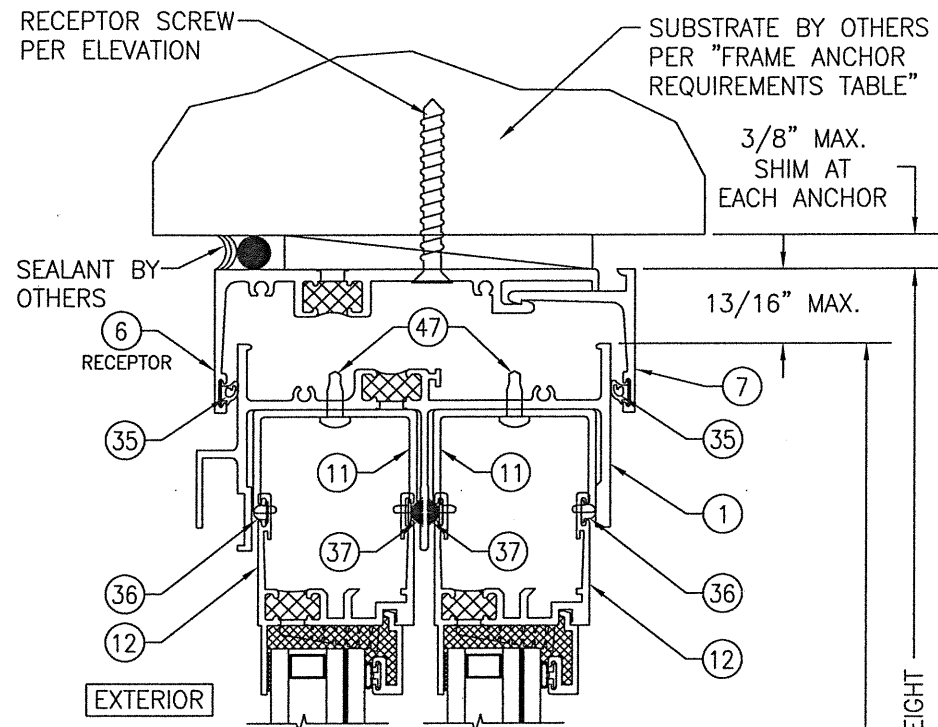
DRAWING NO.	REV.
1910T	
SHEET NO.	
1 OF 7	



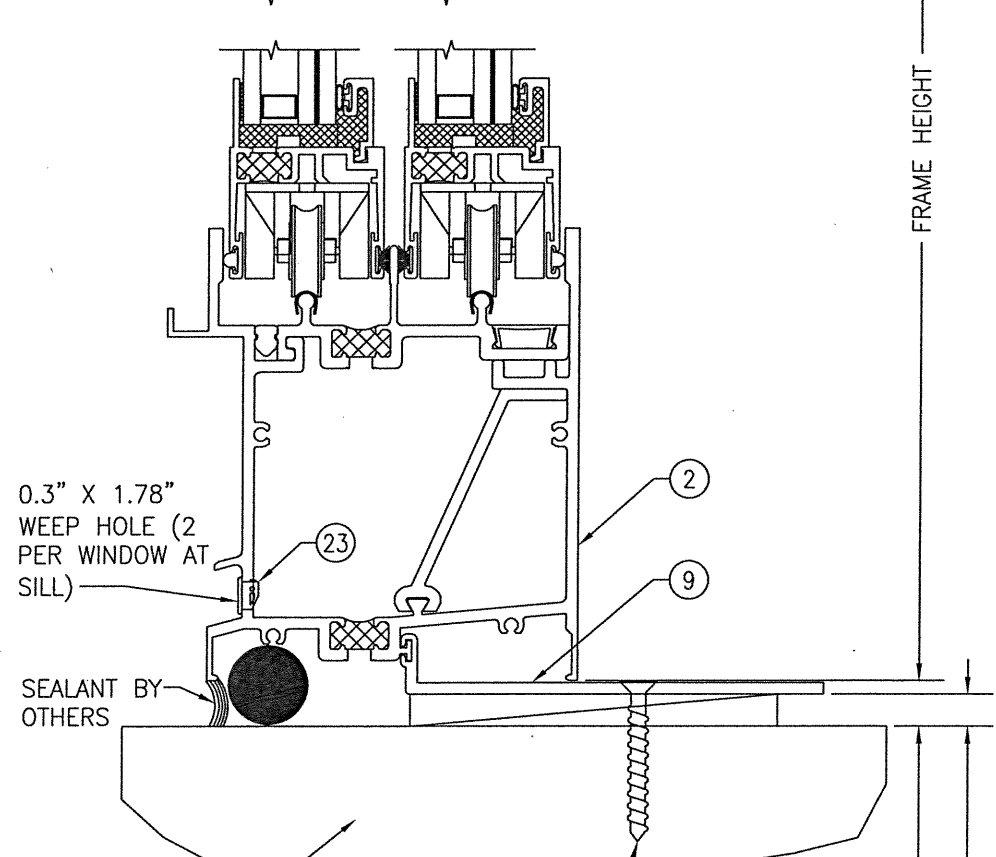
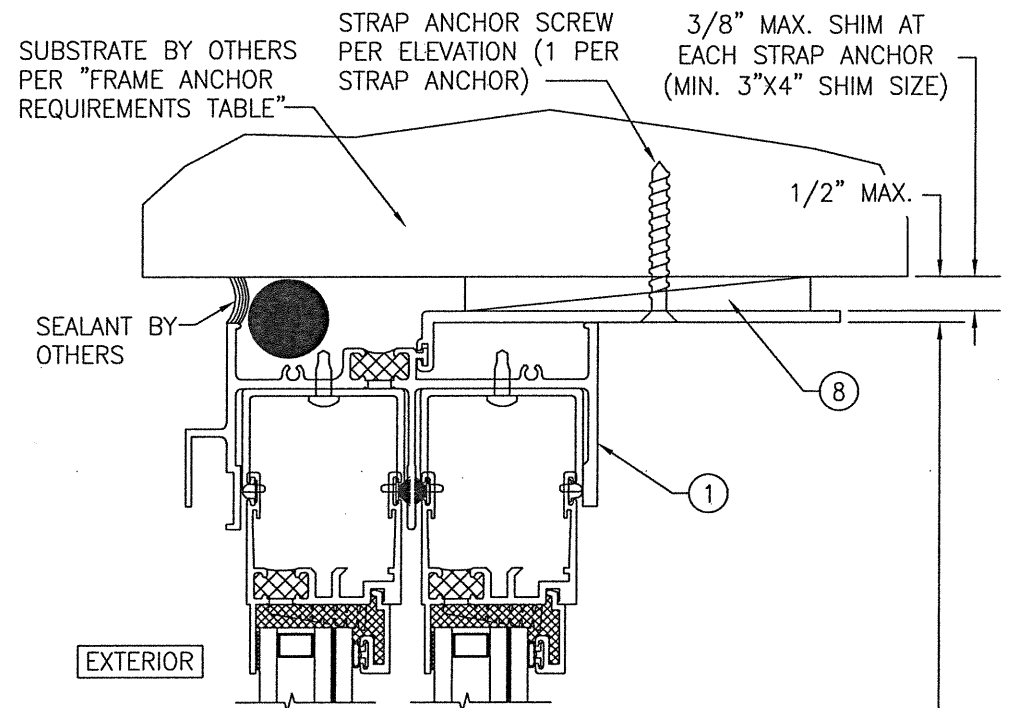
**MULLED UNIT NOTES:**

1. FOR ALL DETAIL NOT SHOWN, SEE INDIVIDUAL WINDOW ELEVATIONS.
2. THERE IS NO LIMIT ON THE NUMBER OF WINDOWS THAT MAY BE COMBINED IN ONE DIRECTION INTO ONE OPENING PROVIDING THE OPENING IS DESIGNED TO SUPPORT ALL LOADS TRANSFERRED FROM THE WINDOWS & THEIR MULLIONS.
3. SUB-SILL & HEAD RECEPTOR RUN CONTINUOUS ACROSS MULLION JOINTS.

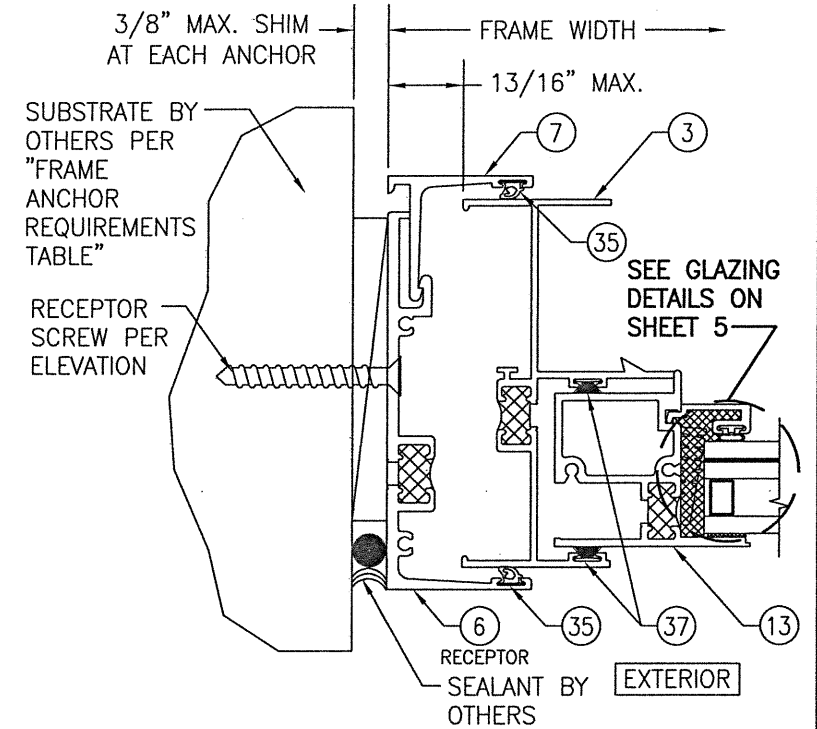
DRAWN BY: W.W.S.		CHECKED BY: W.W.S.	
PLOT: 1-16		DATE: 03/03/21	
NO.	REVISION DESCRIPTION	BY	DATE
DRAWING TITLE <b>8400TL SLIDING GLASS WINDOW (SMALL &amp; LARGE MISSILE IMPACT)</b>			
CONSULTANTS <b>W. W. SCHAEFER ENGINEERING &amp; CONSULTING, P.A. (REG. NO. F-14980)</b>		JOB INFORMATION: <b>KAWNEER COMPANY, INC.</b> 555 GUTHRIDGE COURT NORCROSS, GA 30092 770-449-5555	
7480 150TH COURT NORTH PALM BEACH GARDENS, FL 33418 PHONE: 561-744-3424			
DRAWING NO. <b>1910T</b>		REV.	
SHEET NO. <b>2</b>		OF <b>7</b>	



**SECTION A1**  
SCALE: 1/2 FULL  
(RECEPTOR & SUB-SILL SCREW MOUNT)



**SECTION A2**  
SCALE: 1/2 FULL  
(STRAP ANCHOR MOUNT)  
(FOR DETAIL NOT SHOWN, SEE SECTION A1/3)

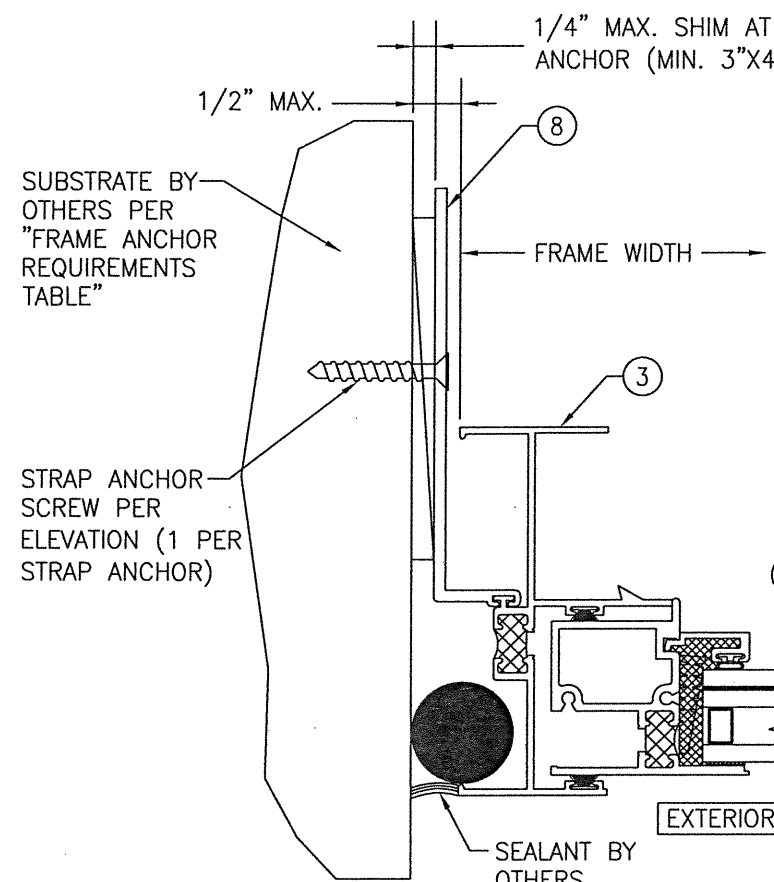


**SECTION B1**  
SCALE: 1/2 FULL  
(RECEPTOR SCREW MOUNT)

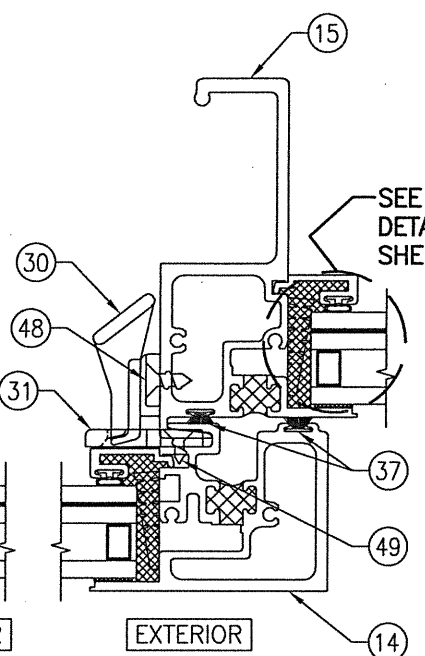


DRAWN BY: W.W.S.		CHECKED BY: W.W.S.	
PLOT: 1=2		DATE: 03/03/21	
NO.	REVISION DESCRIPTION	BY	DATE
DRAWING TITLE: 8400TL SLIDING GLASS WINDOW (SMALL & LARGE MISSILE IMPACT)			
JOB INFORMATION:			
CONSULTANTS: KAWNEER COMPANY, INC.			
555 GUTHRIDGE COURT			
NORCROSS, GA 30092			
770-449-5555			
CONSULTANTS: W. W. SCHAEFER ENGINEERING & CONSULTING, P.A. (REG. NO. F-14980)			
7480 150TH COURT NORTH			
PALM BEACH GARDENS, FL 33418			
PHONE: 561-744-3424			
DRAWING NO. 1910T		REV.	
SHEET NO. 3 OF 7			

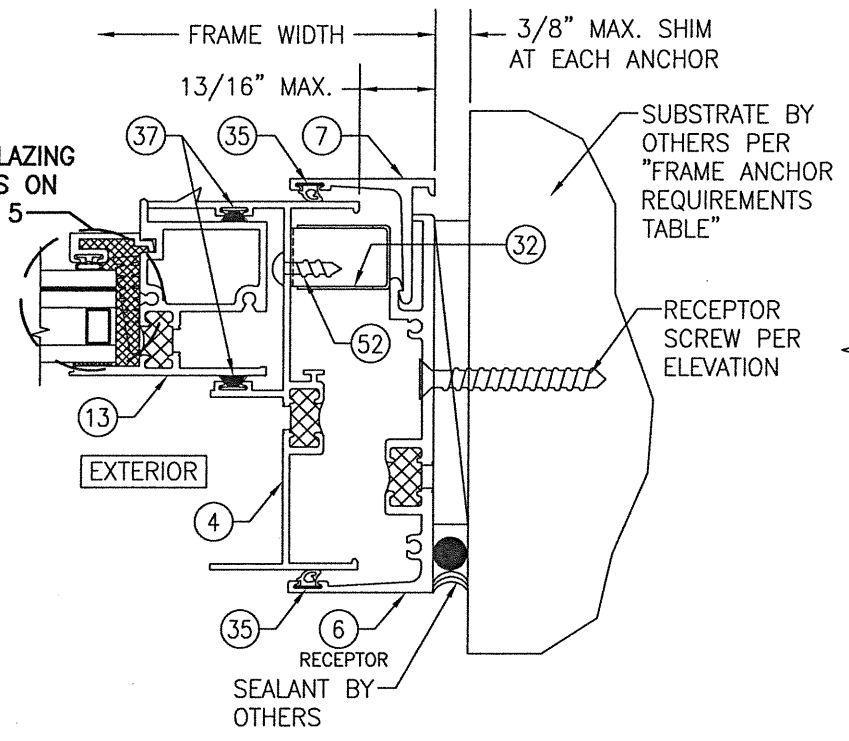
CERTIFICATION  
MAR 03 2021  
WARREN W. SCHAEFER, P.E.  
P.E. NO. 113497



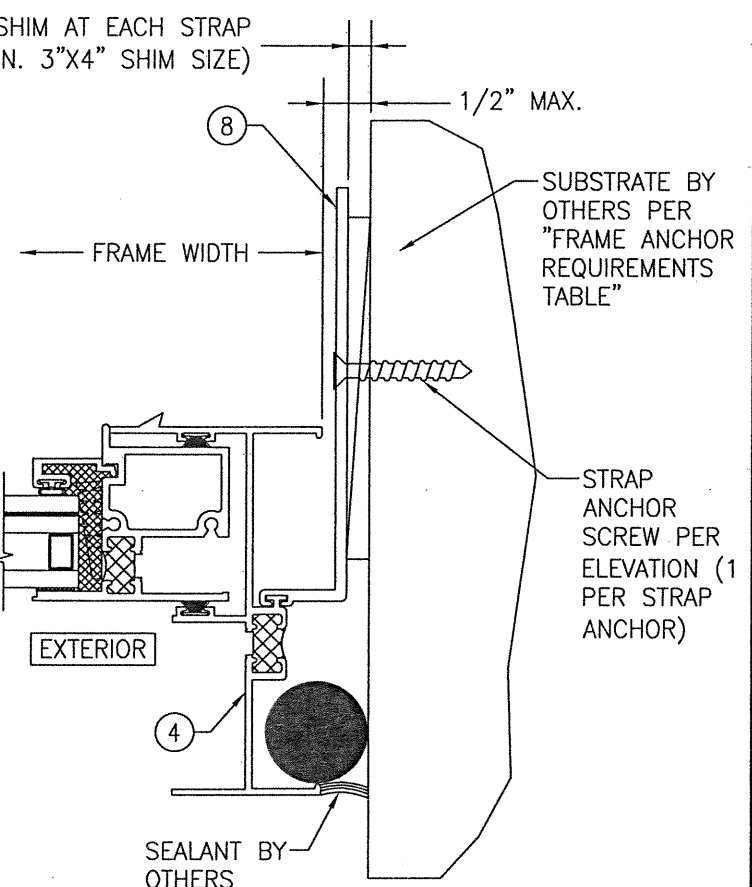
**SECTION B2/4**  
 SCALE: 1/2 FULL  
 (STRAP ANCHOR MOUNT)  
 (FOR DETAIL NOT SHOWN, SEE SECTION B1/3)



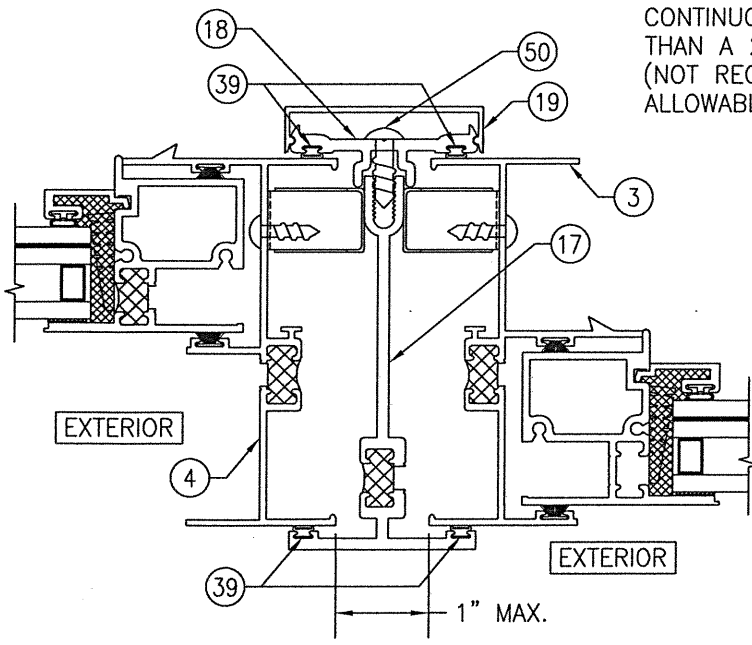
**SECTION C/4**  
 SCALE: 1/2 FULL  
 (RECEPTOR SCREW MOUNT)



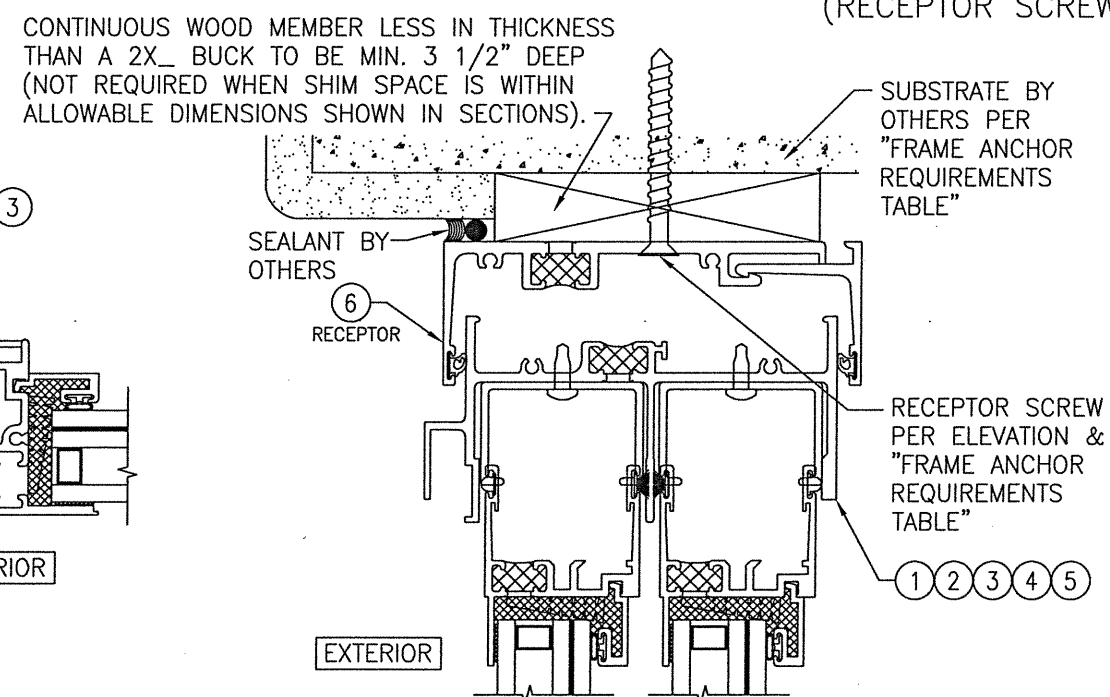
**SECTION D1/4**  
 SCALE: 1/2 FULL  
 (RECEPTOR SCREW MOUNT)



**SECTION D2/4**  
 SCALE: 1/2 FULL  
 (STRAP ANCHOR MOUNT)  
 (FOR DETAIL NOT SHOWN, SEE SECTION D1/4)

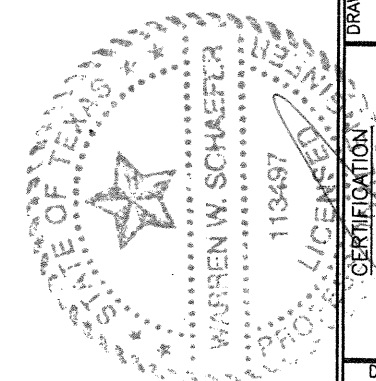


**SECTION E/4**  
 SCALE: 1/2 FULL  
 (FOR DETAIL NOT SHOWN, SEE OTHER SECTIONS)

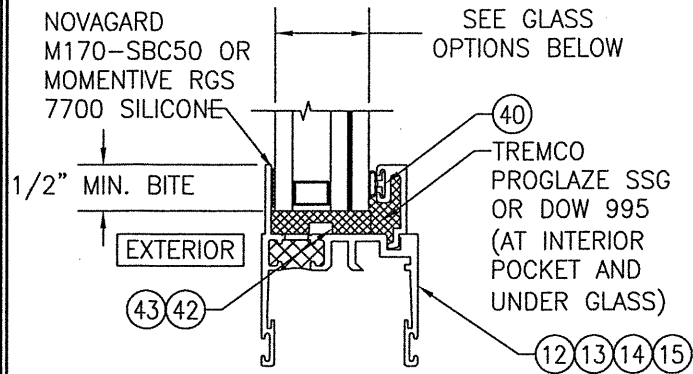


**OPTIONAL DIRECT MOUNT DETAIL TO SUBSTRATE WITH SPACER**  
 (HEAD SECTION SHOWN; SILL & SIDES ARE INSTALLED THE SAME)  
 (FOR DETAIL NOT SHOWN, SEE OTHER SECTIONS)

DRAWN BY: W.W.S.		CHECKED BY: W.W.S.	
PLOT: 1=2		DATE: 03/03/21	
NO.	REVISION DESCRIPTION	DATE	BY
DRAWING TITLE: 8400TL SLIDING GLASS WINDOW (SMALL & LARGE MISSILE IMPACT)			
JOB INFORMATION: KAWNEER COMPANY, INC. 555 GUTHRIE COURT NORCROSS, GA 30092 770-449-5555			
CONSULTANTS: W. W. SCHAEFER ENGINEERING & CONSULTING, P.A. (REG. NO. F-14980) 7480 150TH COURT NORTH PALM BEACH GARDENS, FL 33418 PHONE: 561-744-3424			
DRAWING NO. 1910T		REV.	
SHEET NO. 4 OF 7			





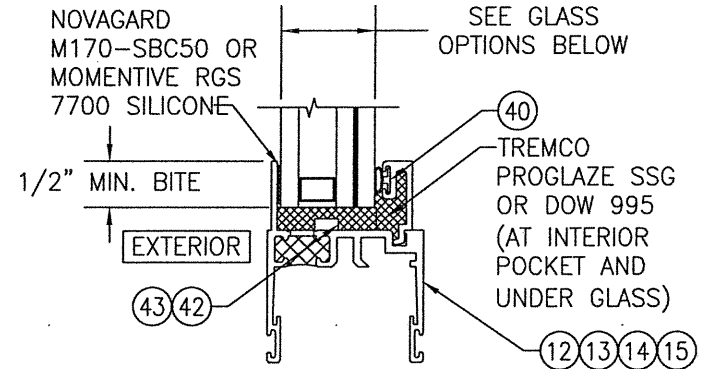


**TYPICAL GLAZING DETAIL  
 (LARGE MISSILE IMPACT GLASS)**

**L.M.I. GLASS OPTIONS:**

- OPTION 1: 1" THICK I.G. GLASS (3/16 HT. ST. EXTERIOR; 3/8" SPACER; 3/16" HT. ST./0.075 EASTMAN CHEM. CO. SAFLEX STORM/3/16" HT. ST. INTERIOR)
- OPTION 2: 1" THICK I.G. GLASS (3/16 HT. ST. EXTERIOR; 3/8" SPACER; 3/16" HT. ST./0.09 KURARAY SG/3/16" HT. ST. INTERIOR)
- OPTION 3: 1" THICK I.G. GLASS (3/16 HT. ST. EXTERIOR; 3/8" SPACER; 3/16" HT. ST./0.100 EASTMAN CHEM. CO. SAFLEX HP/3/16" HT. ST. INTERIOR)

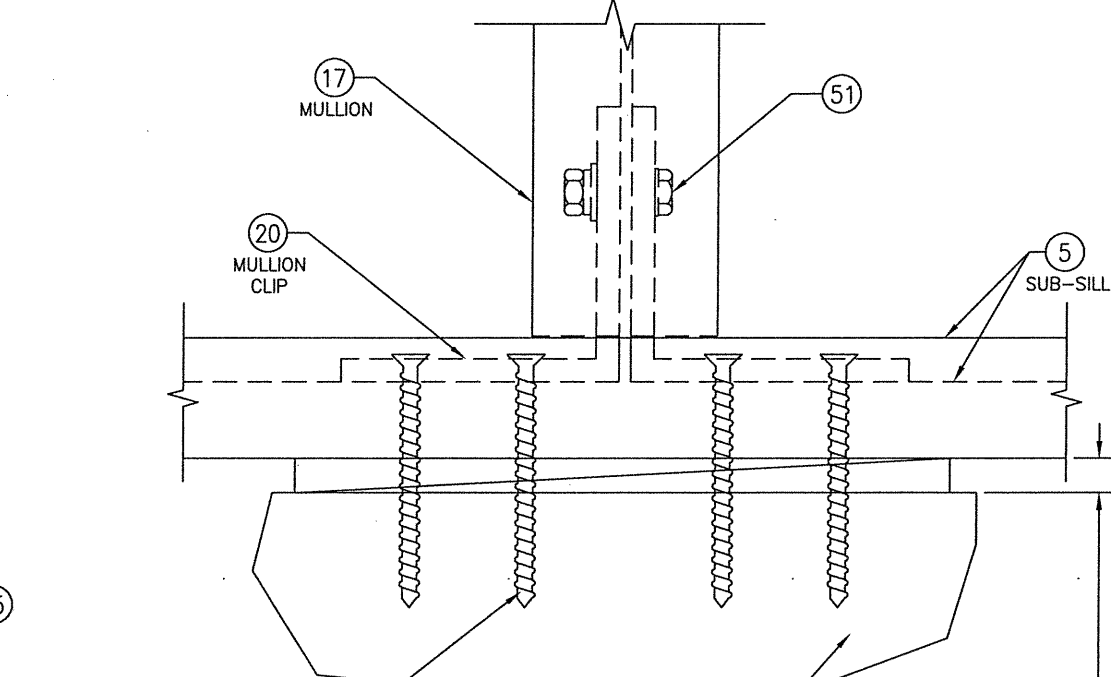
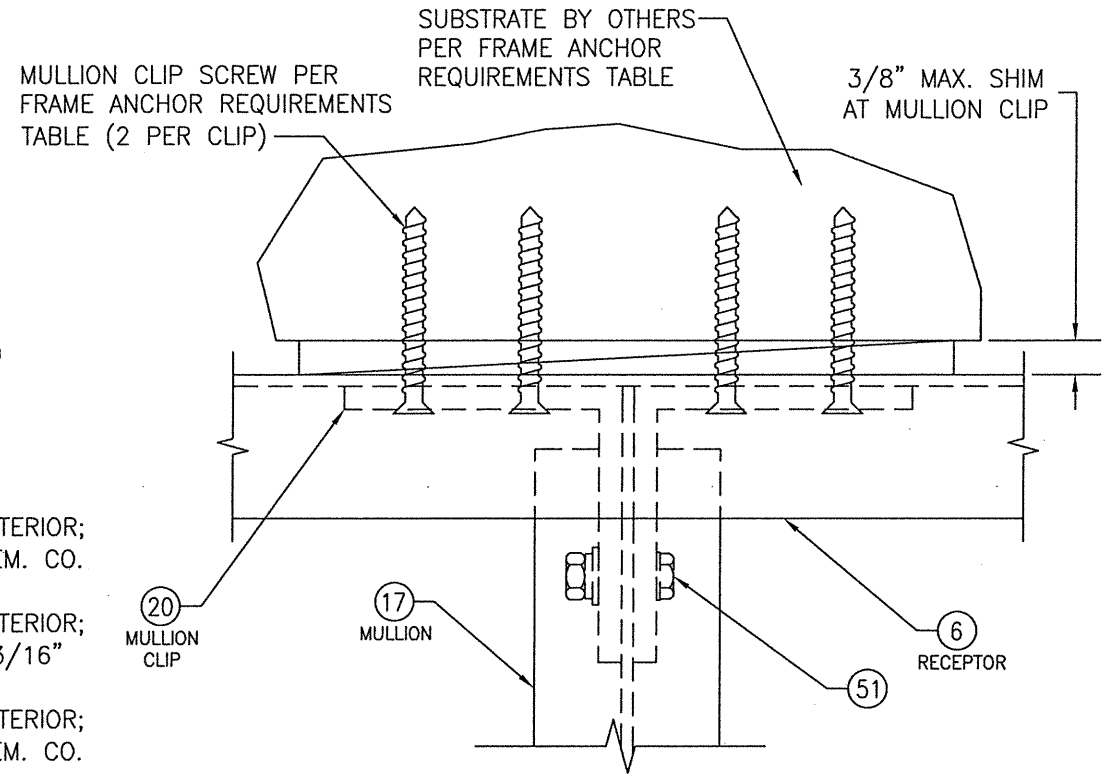
NOTE: DUE TO THE EXTERIOR PANE OF GLASS BEING NON-TEMPERED, LARGE MISSILE IMPACT WINDOWS MAY NOT BE INSTALLED IN A LOCATION WHERE THE SILL HEIGHT OF WINDOW EXCEEDS 30 FT. ABOVE GRADE UNLESS WINDOW IS COVERED BY AN APPROVED IMPACT SHUTTER.



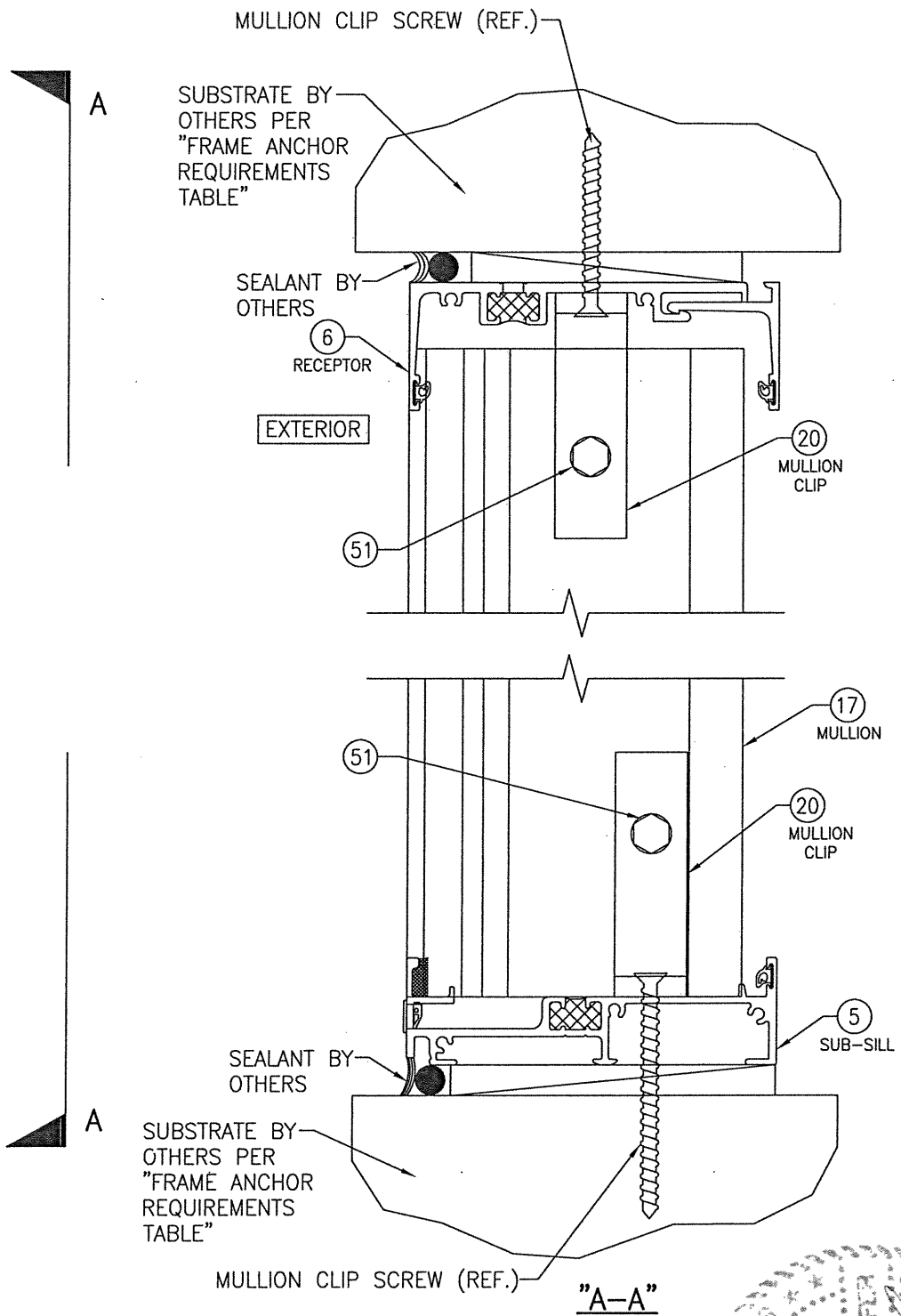
**TYPICAL GLAZING DETAIL  
 (SMALL MISSILE IMPACT GLASS)**

**S.M.I. GLASS OPTIONS:**

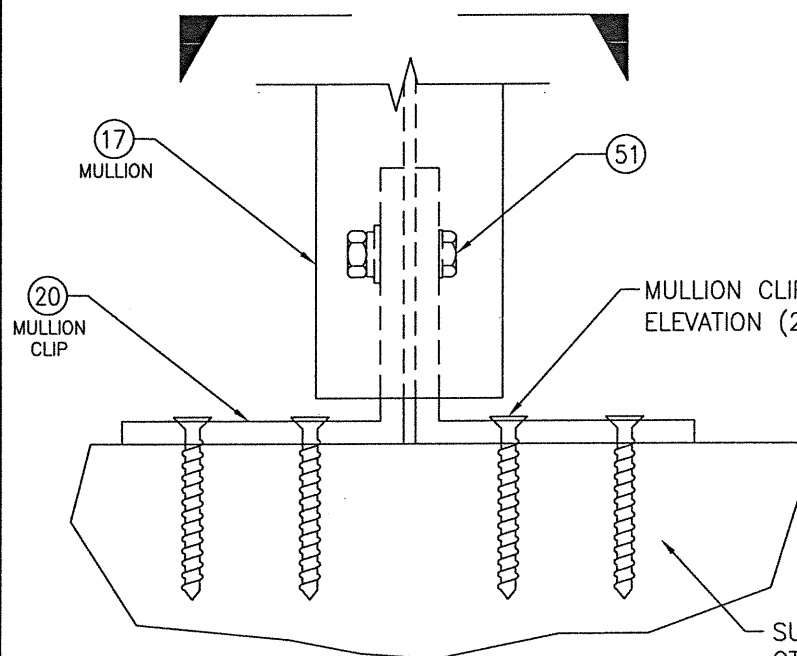
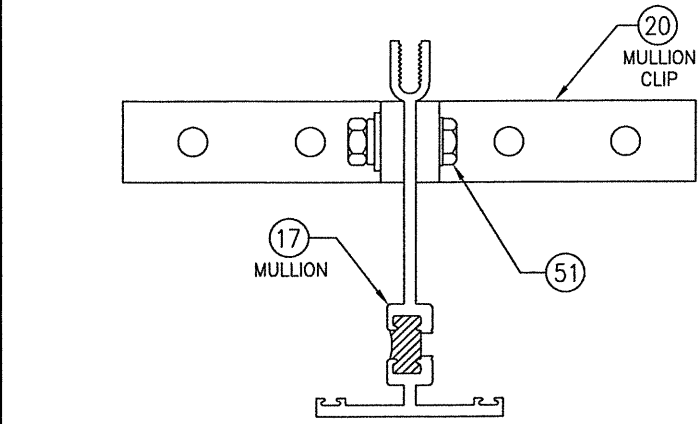
- OPTION 1: 1" THICK I.G. GLASS (3/16 TEMP. EXTERIOR; 3/8" SPACER; 3/16" HT. ST./0.06 EASTMAN CHEM. CO. SAFLEX/3/16" HT. ST. INTERIOR)
- OPTION 2: 1" THICK I.G. GLASS (3/16 TEMP. EXTERIOR; 3/8" SPACER; 3/16" HT. ST./0.06 KURARY BUTICITE PVB/3/16" HT. ST. INTERIOR)



**MULLION END CLIP DETAIL A**  
 (FOR DETAIL NOT SHOWN, SEE OTHER SECTIONS)  
 (WINDOW COMPONENTS NOT SHOWN FOR CLARITY)



DRAWN BY: W.W.S.		CHECKED BY: W.W.S.	
PLOT: 1=2		DATE: 03/03/21	
NO.	REVISION	DESCRIPTION	DATE
DRAWING TITLE: 8400TL SLIDING GLASS WINDOW (SMALL & LARGE MISSILE IMPACT)			
JOB INFORMATION: KAWNEER COMPANY, INC. 555 GUTHRIDGE COURT NORCROSS, GA 30092 770-449-5555			
CONSULTANTS: W. W. SCHAEFER ENGINEERING & CONSULTING, P.A. (REG. NO. F-14980) 7480 150TH COURT NORTH PALM BEACH GARDENS, FL 33418 PHONE: 561-744-3424			
DRAWING NO. 1910T			
SHEET NO. 5 OF 7			
CERTIFICATION LICENSED PROFESSIONAL ENGINEER MAR 03 2021 WARREN W. SCHAEFER, P.E. P.E. NO. 113497			

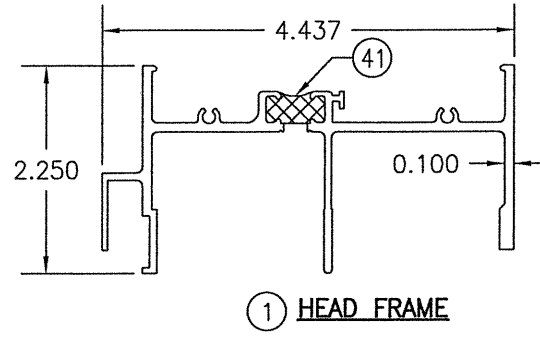


**MULLION END CLIP DETAIL B**

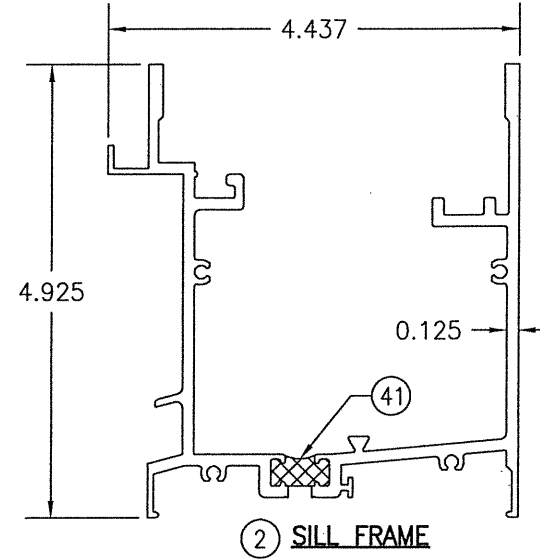
(SILL SECTION SHOWN, HEAD IS THE SAME)  
(WINDOW COMPONENTS NOT SHOWN FOR CLARITY)

MULLION CLIP SCREW PER ELEVATION (2 PER CLIP)

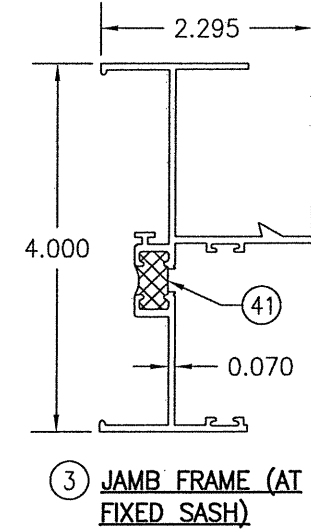
SUBSTRATE BY OTHERS PER "FRAME ANCHOR REQUIREMENTS TABLE"



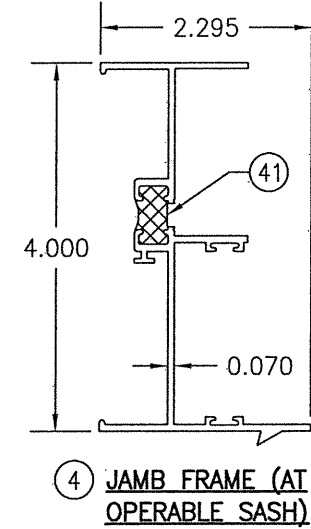
① HEAD FRAME



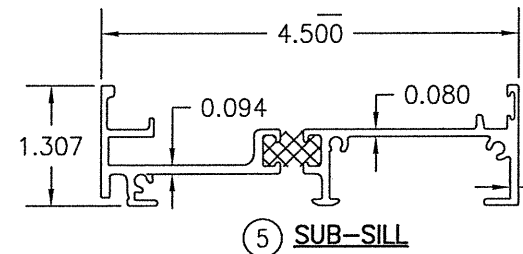
② SILL FRAME



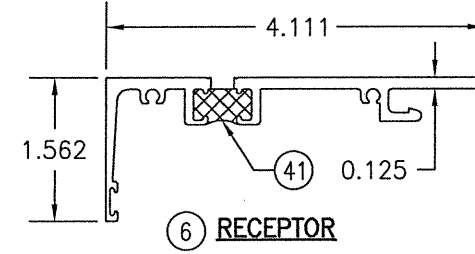
③ JAMB FRAME (AT FIXED SASH)



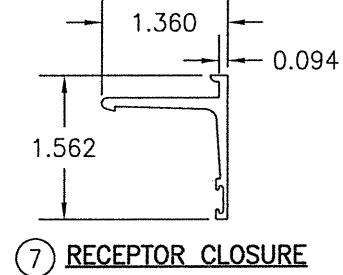
④ JAMB FRAME (AT OPERABLE SASH)



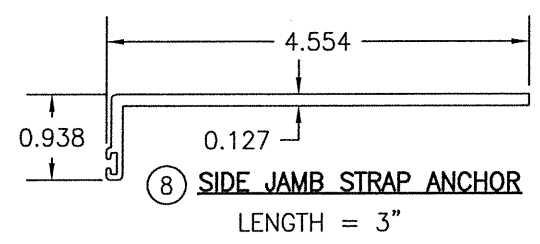
⑤ SUB-SILL



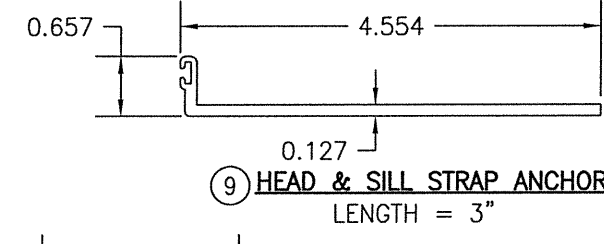
⑥ RECEPTOR



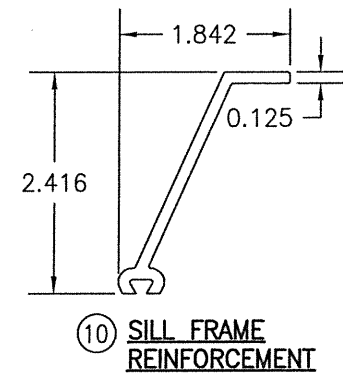
⑦ RECEPTOR CLOSURE



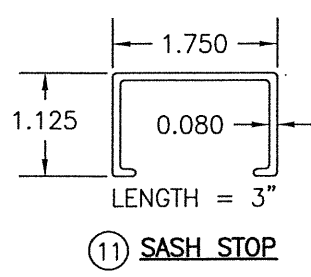
⑧ SIDE JAMB STRAP ANCHOR  
LENGTH = 3"



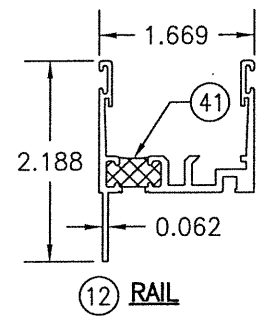
⑨ HEAD & SILL STRAP ANCHOR  
LENGTH = 3"



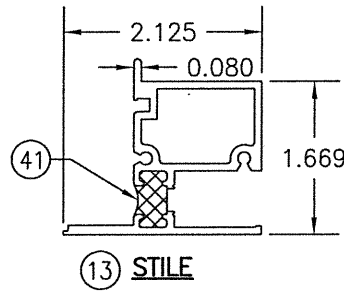
⑩ SILL FRAME REINFORCEMENT



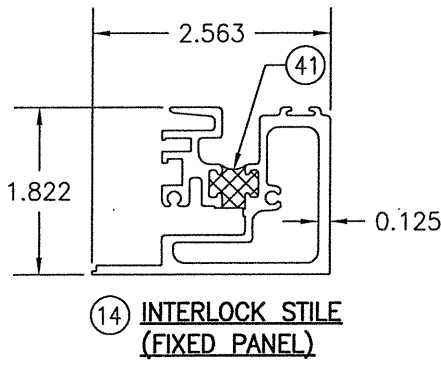
⑪ SASH STOP



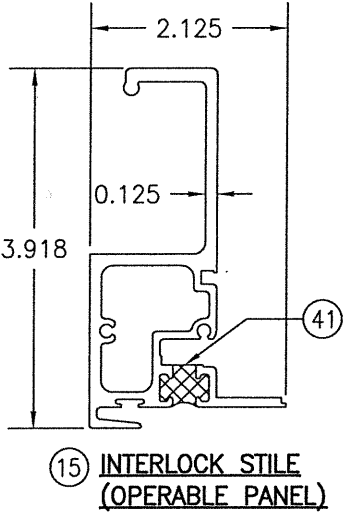
⑫ RAIL



⑬ STILE



⑭ INTERLOCK STILE (FIXED PANEL)



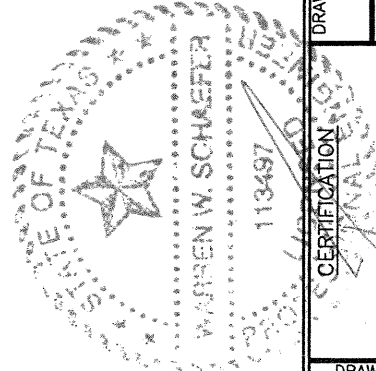
⑮ INTERLOCK STILE (OPERABLE PANEL)

DRAWN BY: W.W.S.	CHECKED BY: W.W.S.
PLOT: 1=2	DATE: 03/03/21
NO.	REVISION DESCRIPTION

DRAWING TITLE: 8400TL SLIDING GLASS WINDOW (SMALL & LARGE MISSILE IMPACT)

JOB INFORMATION:  
KAWNEER COMPANY, INC.  
555 GUTHRIDGE COURT  
NORCROSS, GA 30092  
770-449-5555

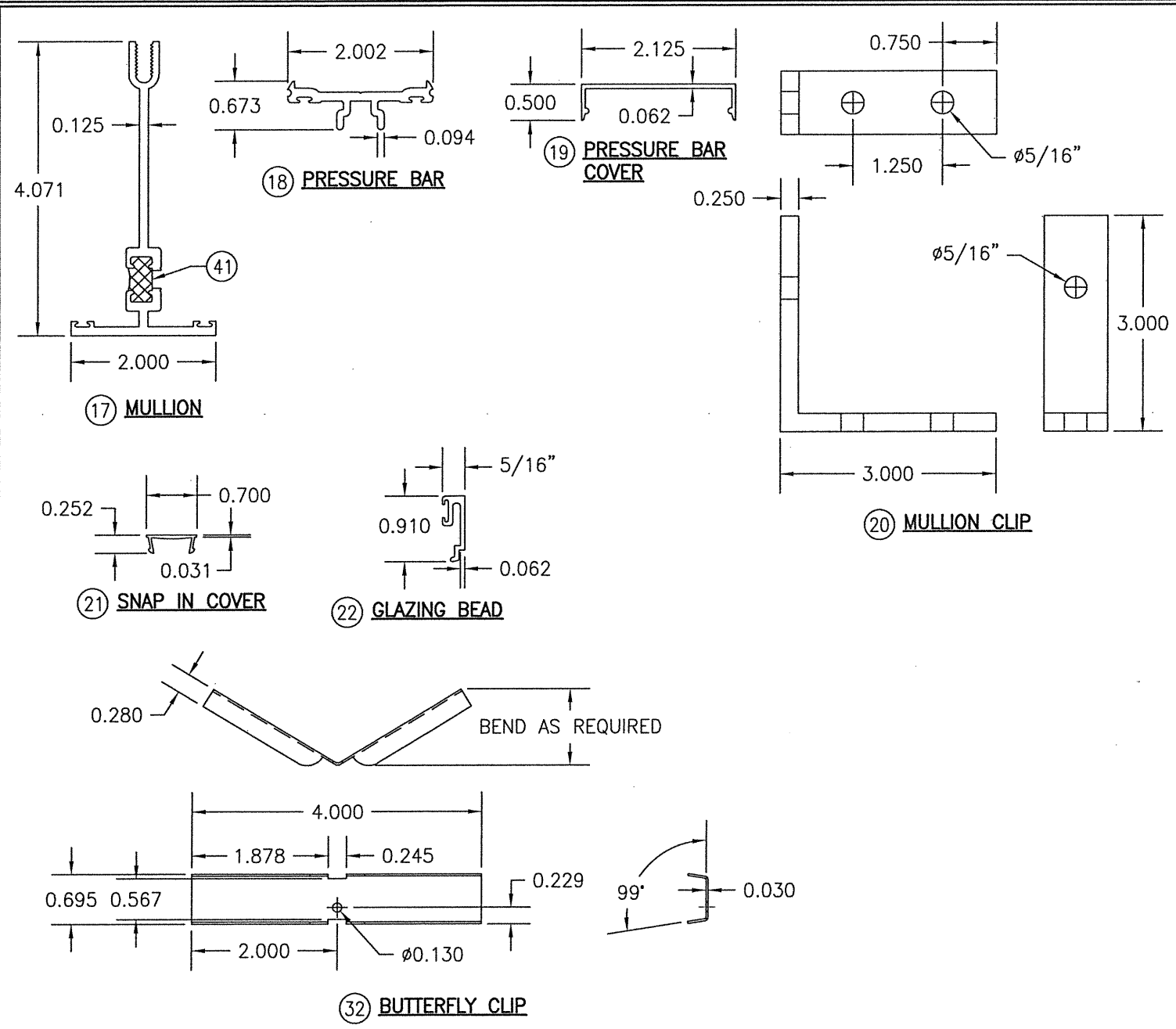
CONSULTANTS:  
W. W. SCHAEFER ENGINEERING & CONSULTING, P.A. (REG. NO. F-14980)  
7480 150TH COURT NORTH  
PALM BEACH GARDENS, FL 33418  
PHONE: 561-744-3424



CERTIFICATION:  
MAR 03 2021  
WARREN W. SCHAEFER, P.E.  
P.E. NO. 113497

DRAWING NO. 1910T	REV.
SHEET NO. 6	OF 7

ITEM #	ITEM DESCRIPTION	MANUFACTURER/NOTES
<b>PARTS</b>		
1	HEAD FRAME	6063-T6 ALUMINUM
2	SILL FRAME	6063-T6 ALUMINUM
3	JAMB FRAME (AT FIXED SASH)	6063-T6 ALUMINUM
4	JAMB FRAME (AT OPERABLE SASH)	6063-T6 ALUMINUM
5	SUB-SILL	6063-T6 ALUMINUM
6	RECEPTOR	6063-T6 ALUMINUM
7	RECEPTOR CLOSURE	6063-T6 ALUMINUM
8	SIDE JAMB STRAP ANCHOR	6063-T6 ALUMINUM
9	HEAD & SILL STRAP ANCHOR	6063-T6 ALUMINUM
10	SILL FRAME REINFORCEMENT	6063-T6 ALUMINUM
11	SASH STOP	6063-T6 ALUMINUM
12	RAIL	6063-T6 ALUMINUM
13	STILE	6063-T6 ALUMINUM
14	INTERLOCK STILE (FIXED PANEL)	6063-T6 ALUMINUM
15	INTERLOCK STILE (OPERABLE PANEL)	6063-T6 ALUMINUM
17	MULLION	6063-T6 ALUMINUM
18	PRESSURE BAR	6063-T6 ALUMINUM
19	PRESSURE BAR COVER	6063-T6 ALUMINUM
20	MULLION CLIP	6063-T6 ALUMINUM
21	SNAP IN COVER	6063-T6 ALUMINUM
22	GLAZING BEAD	6063-T6 ALUMINUM
23	WEEP COVER	PLASTIC
<b>HARDWARE</b>		
26	SASH CAM 400 SERIES	NYLON
27	HS, H.D. MFG. RAIL SASH CAM	NYLON
28	ROLLER	ZINC PLATED STEEL
29	ROLLER TRACK	S.S.
30	SWEEP LOCK	BRONZE (1 AT 8 3/4" FROM BOTTOM OF SASH & 1 AT CENTERLINE OF SASH)
31	LOCK KEEPER	BRONZE
32	BUTTERFLY CLIP	1018 GALVANIZED STEEL (1 AT MID-HEIGHT OF JAMB)
<b>SEALS &amp; SEALANTS</b>		
35	GASKET	SANTROP/POLYPROPYLENE
36	WEATHERSTRIP/SASH SEPARATOR	PVC
37	TRI-FIN WEATHERING	POLYPROPYLENE
38	1/4" BACK UP WEDGE	SCR-900
39	BULB WEATHERING	TPE/POLYPROPYLENE
40	BULB WEATHERING	TPE/POLYPROPYLENE
41	DEBRIDGING	2-PART POLYURETHANE
42	SETTING BLOCK	DENSE EPDM
43	WEDGE BLOCK	EPDM
<b>FASTENERS</b>		
47	NO. 8 X 1/2" TORX PHTFSD	2 PER SASH STOP
48	NO. 10 X 1/2" FHTF "B"	2 PER SWEEP LOCK
49	NO. 6 X 3/8" FHTF "AB"	2 PER LOCK KEEPER
50	1/4 -20 X 3/4" PHMS	WITHIN 3" FROM ENDS & 3" O.C.
51	1/4-20 X 1" HWHMS 1/4-20 HEX NUT 1/4" FLAT WASHER 1/4" RING LOCK WASHER	1 PER MULLION END
52	NO. 8 X 5/8" PHTF "AB"	1 PER BUTTERFLY CLIP



DRAWN BY: W.W.S.	CHECKED BY: W.W.S.
PLOT: 1=2	DATE: 03/03/21
DATE	BY
REVISION DESCRIPTION	
NO.	

**DRAWING TITLE** 8400TL SLIDING GLASS WINDOW (SMALL & LARGE MISSILE IMPACT)

**JOB INFORMATION:**  
**KAWNEER COMPANY, INC.**  
 555 GUTHRIDGE COURT  
 NORCROSS, GA 30092  
 770-449-5555

**CONSULTANTS**  
**W. W. SCHAEFER ENGINEERING & CONSULTING, P.A. (REG. NO. F-14980)**  
 7480 150TH COURT NORTH  
 PALM BEACH GARDENS, FL 33418  
 PHONE: 561-744-3424

**CERTIFICATION**  
 STATE OF TEXAS  
 WARREN W. SCHAEFER  
 113497  
 LICENSED PROFESSIONAL ENGINEER

**MAR 03 2021**  
 WARREN W. SCHAEFER, P.E.  
 P.E. NO. 113497

DRAWING NO.	REV.
1910T	
SHEET NO.	
7	OF 7