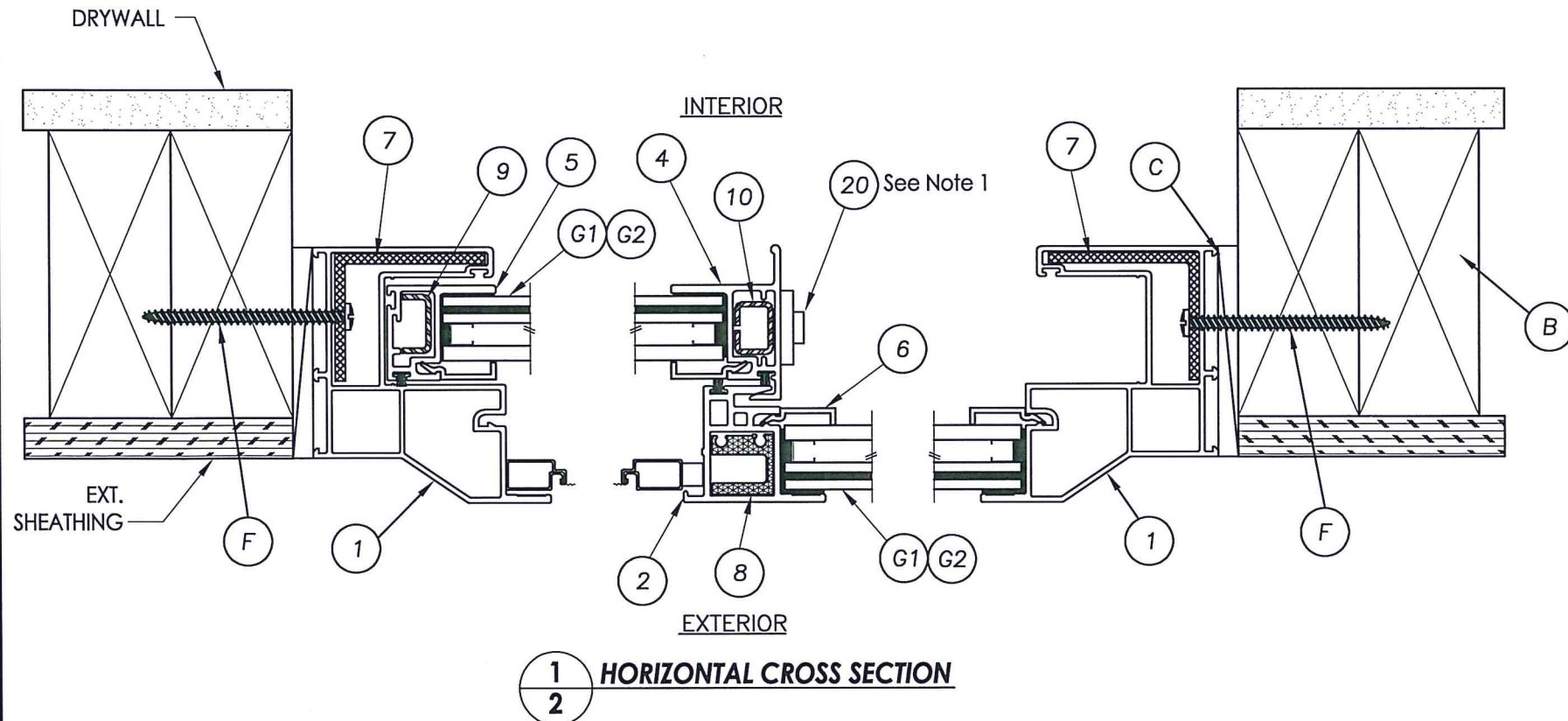
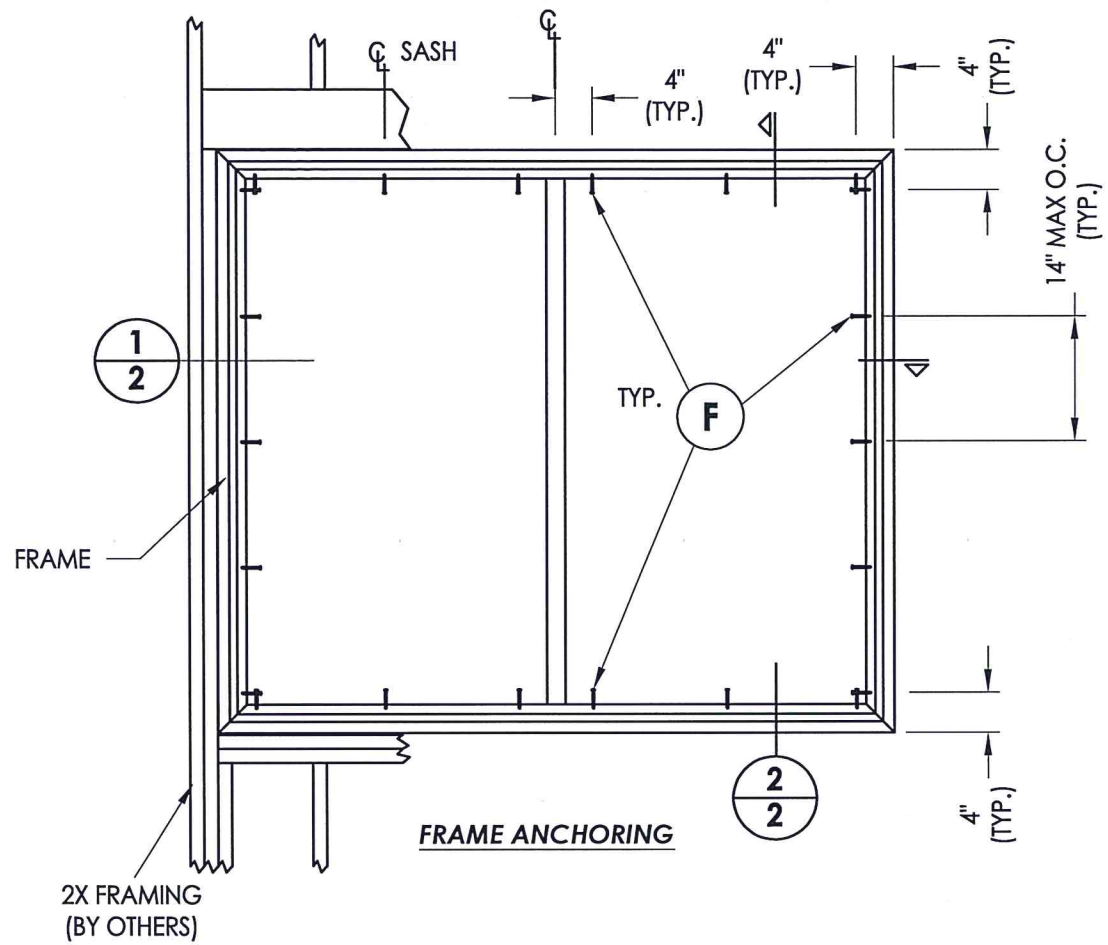
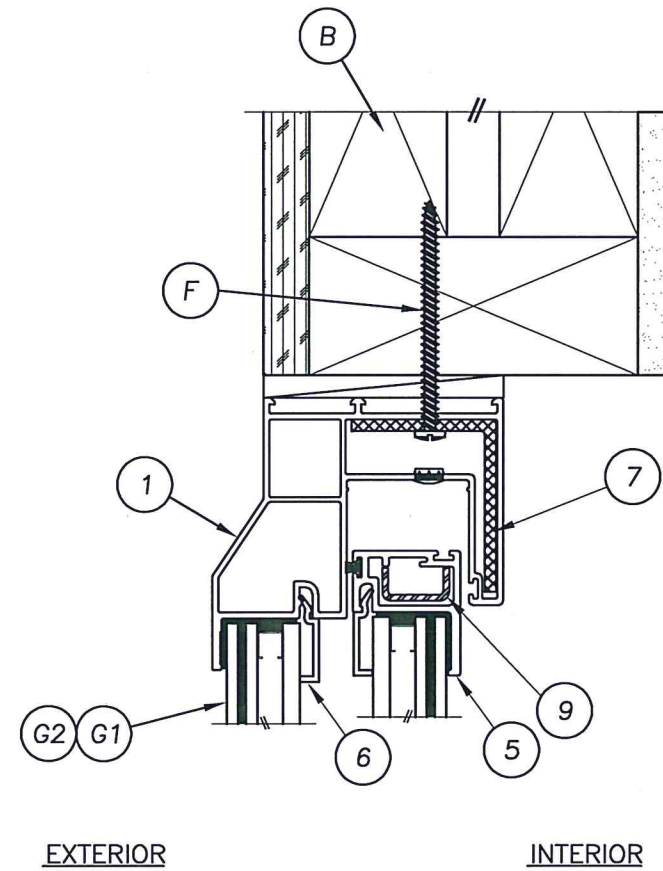




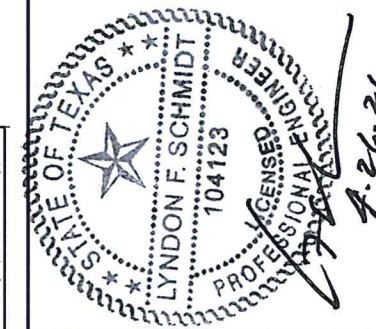
Z:\Clients\Associated PERMANENT\B - Texas Dept of Ins\Horizontal Slider\WIN 681 3102 IMP Horizontal Slider\C - Drawings\TX-4321-22.dwg



**1**  
**2** HORIZONTAL CROSS SECTION



**2**  
**2** VERTICAL CROSS SECTION



NOTE:  
1. Locks & keepers (2) located 7-1/2" from each end of meeting stile.

Documents Prepared By: Lyndon F. Schmidt, P.E.  
TEXAS P.E. #104123

**RW** BUILDING CONSULTANTS, INC.  
P.O. Box 230 Valrico FL 33595  
Phone No.: 813.659.9197

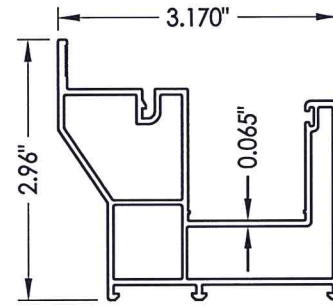
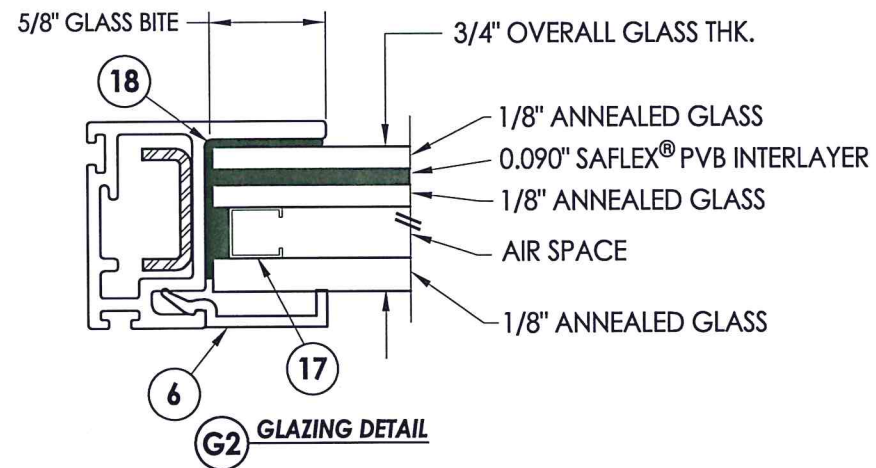
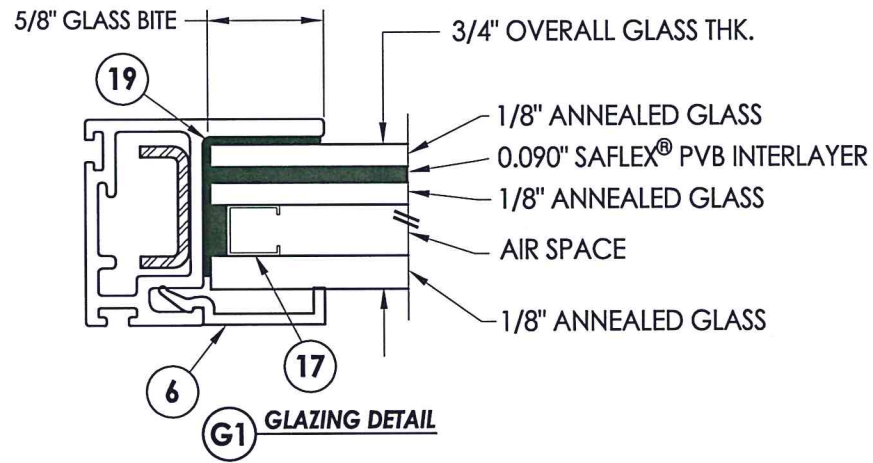
TEXAS BOARD OF PROFESSIONAL ENGINEERS  
CERTIFICATE OF REGISTRATION # F-11852

PRODUCT:	HORIZONTAL SLIDER	
PART OR ASSEMBLY:	FRAME ANCHORING & CROSS SECTIONS	
DATE	NO.	BY
8/25/20	2	LFS
6/09/15	1	LFS
DATE	NO.	BY
9/10/13		
DATE:	9/10/13	
SCALE:	N.T.S.	
DWG. BY:	JK	
CHK. BY:	LFS	
DRAWING NO.:	TX-4321	
SHEET	2	OF 3

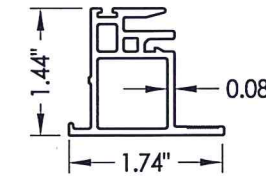
© 2013 R.W. BUILDING CONSULTANTS INC.

BILL OF MATERIALS		
ITEM #	DESCRIPTION	MATERIAL
B	2X FRAMING (SG >= 0.42)	WOOD
C	1/4" MAX. SHIM SPACE	-
F	#10 X 2-1/2" PPH SMS	STEEL
1	EXTRUDED VINYL FRAME *	RIGID PVC
2	EXTRUDED VINYL KEEPER RAIL *	RIGID PVC
3	EXTRUDED VINYL SILL TRACK *	RIGID PVC
4	EXTRUDED VINYL LOCK RAIL *	RIGID PVC
5	EXTRUDED VINYL SASH STILE *	RIGID PVC
6	EXTRUDED VINYL GLAZING BEAD *	RIGID PVC
7	EXTRUDED ALUMINUM FRAME REINFORCEMENT	ALUMINUM
8	EXTRUDED ALUMINUM MULLION REINFORCEMENT	ALUMINUM
9	ROLL FORMED STEEL SASH REINFORCEMENT	STEEL
10	ROLL FORMED STEEL LOCK RAIL REINFORCEMENT	STEEL
17	"U" SHAPED METAL SPACER	STEEL
18	STRUCTURAL ADHESIVE SEALANT (PECORA 896HIS)	SILICONE
19	STRUCTURAL ADHESIVE SEALANT (DOW 995)	SILICONE
20	CAM LOCK & KEEPER (TRUTH)	STEEL

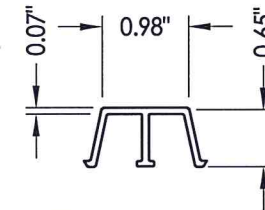
\*THE APPROVED WHITE RIGID PVC EXTERIOR EXTRUSIONS FOR WINDOWS ARE TO BE PRODUCED BY EXTRUDERS LICENSEES IN "AAMA CERTIFICATION PROGRAMS FOR RIGID PVC EXTRUSIONS."



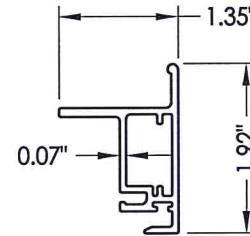
1 MAIN FRAME



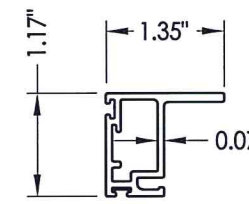
2 KEEPER RAIL



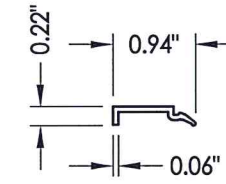
3 SILL TRACK



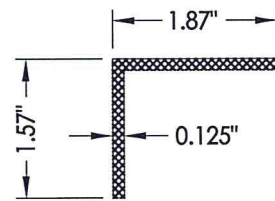
4 LOCK RAIL



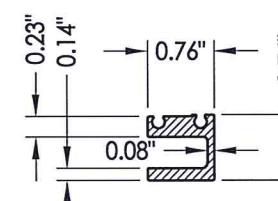
5 SASH STILE



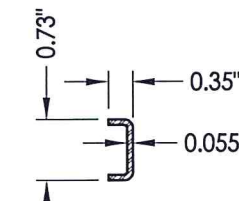
6 GLAZING BEAD



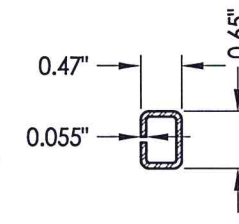
7 REINFORCEMENT



8 REINFORCEMENT



9 REINFORCEMENT



10 REINFORCEMENT



Documents Prepared By: Lyndon F. Schmidt, P.E.  
TEXAS P.E. #104123

**RW** BUILDING CONSULTANTS, INC.  
P.O. Box 230 Valrico FL 33595  
Phone No.: 813.689.9197

TEXAS BOARD OF PROFESSIONAL ENGINEERS  
CERTIFICATE OF REGISTRATION # F-11852

PRODUCT:	HORIZONTAL SLIDER	
PART OR ASSEMBLY:	BILL OF MATERIALS, GLAZING DETAILS & COMPONENTS	
NO.	DATE	REVISIONS
2	8/25/20	UPDATE TO 2018 IBC/IRC
1	6/09/15	REVISED MANUFACTURER/LOGO
		BY
		LFS
		LFS
DATE:	9/10/13	
SCALE:	N.T.S.	
DWG. BY:	JK	
CHK. BY:	LFS	
DRAWING NO.:	TX-4321	
SHEET	3 OF 3	