

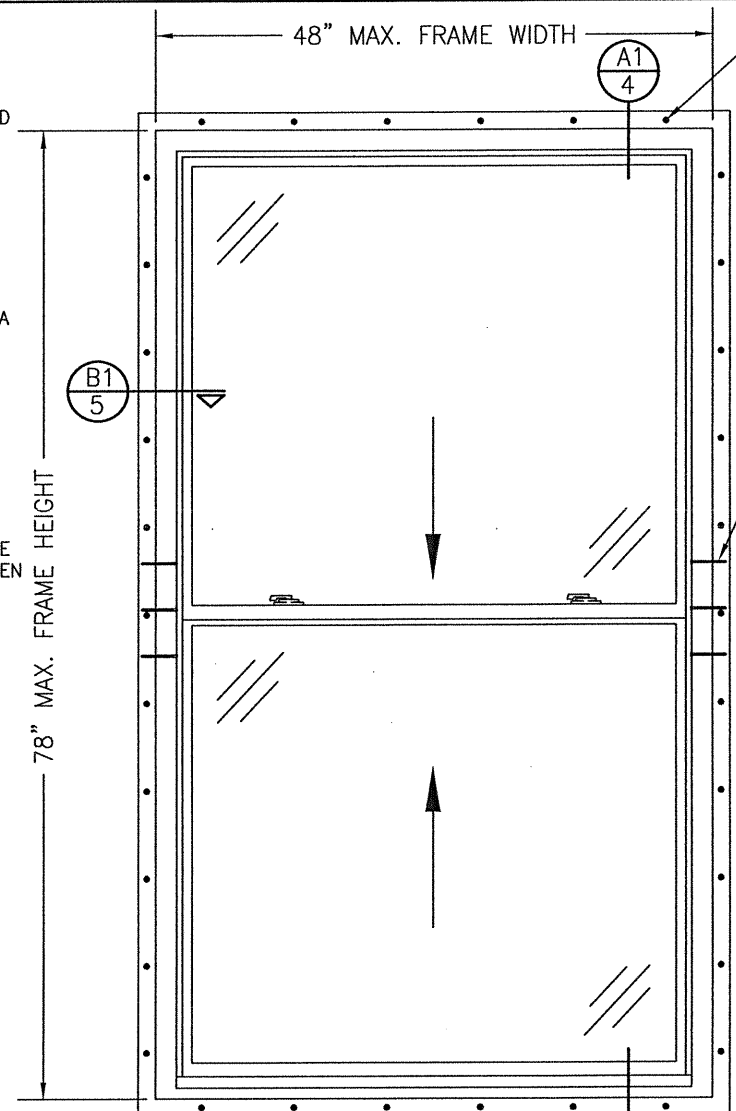
**GENERAL NOTES:**

- ALL FASTENERS SHALL BE IN ACCORDANCE WITH THESE DRAWINGS. SPECIFIED ANCHOR EMBED TO BASE MATERIAL SHALL BE BEYOND WALL FINISH OR STUCCO.
- OPENINGS, BUCKING & BUCKING FASTENERS MUST BE PROPERLY DESIGNED & INSTALLED TO TRANSFER WIND LOADS TO THE STRUCTURE.
- THESE NON-IMPACT RATED PRODUCT INSTALLATIONS ARE IN ACCORDANCE WITH AND MEET THE REQUIREMENTS OF THE 2018 INTERNATIONAL BUILDING CODE (IBC).
- ALL ANCHORS SECURING PRODUCT FRAME TO PRESSURE TREATED BUCKS OR WOOD FRAMING SHALL BE CAPABLE OF RESISTING CORROSION CAUSED BY THE PRESSURE TREATING CHEMICALS IN THE WOOD.
- TO THE BEST OF OUR KNOWLEDGE, THE PRODUCT SHOWN HEREIN IS CERTIFIED & QUALITY ASSURED BY A NATIONALLY ACCREDITED CERTIFICATION/QA ENTITY & SHALL BE LABELED IN ACCORDANCE WITH CERTIFICATION/QA ENTITIES SPECIFICATIONS. PRODUCT ASSEMBLY IS NOT PART OF THIS DRAWING AND SHALL BE IN ACCORDANCE WITH THE MANUFACTURER'S QUALITY ASSURANCE SPECIFICATIONS & TESTING REPORTS.
- CERTIFICATION OF THESE PRODUCT INSTALLATIONS SHALL BE CONSIDERED VOID IF ANY OF THE FOLLOWING APPLY: 1) THEY ARE INSTALLED WITHOUT A BUILDING PERMIT FROM THE APPLICABLE LOCAL BUILDING DEPARTMENT. 2) IF THEY ARE INSTALLED BY ANYONE OTHER THAN A LICENSED CONTRACTOR EXPERIENCED WITH WINDOW/DOOR INSTALLATIONS. 3) IF CHANGES HAVE OCCURRED TO THE PRODUCT'S CERTIFICATION ENTITY'S CERTIFICATE THAT CAUSE THESE INSTALLATIONS TO BE INCORRECT OR INCONSISTENT WITH WHAT HAS BEEN TESTED.
- THE LEAST DESIGN PRESSURE SPECIFIED EITHER IN THIS DRAWING OR IN THE PRODUCTS CERTIFICATION SHALL CONTROL FOR THE INSTALLED PRODUCT.
- THESE DRAWINGS CERTIFY THE PRODUCT INSTALLATION ONLY. WATER PROOFING OF THE INSTALLED PRODUCT IS NOT PART OF THIS INSTALLATION CERTIFICATION. THAT RESPONSIBILITY SHALL BE THAT OF THE MANUFACTURER &/OR INSTALLER.

INSTALLATION EVALUATION IS BASED ON APPLICABLE ANCHOR STANDARDS AND/OR INFORMATION & RESULTS FROM APPLICABLE TEST REPORTS. THE BUILDING CODE VERSION CONSIDERED WITH THE EVALUATION WAS THAT IN FORCE AT THE TIME OF THE EVALUATION. IN THE EVENT OF CODE VERSION CHANGES/UPDATES OR IN THE EVENT THAT NEW OR ADDITIONAL TESTING IS COMPLETED ON THE REFERENCED PRODUCT, PRIOR TO STATING CODE COMPLIANCE, THE MANUFACTURER SHALL CONFIRM WITH THE INSTALLATION EVALUATION ENGINEER OF RECORD THAT THE INSTALLATIONS SPECIFIED HERE-IN ARE CURRENT WITH THE THEN CURRENT TESTING, CODE AND APPLICABLE STANDARDS.

**ANCHOR/SUBSTRATE EVALUATION NOTE:**

ALL ANCHORS IN THEIR SPECIFIED SUBSTRATES HAVE BEEN ANALYZED IN ACCORDANCE WITH THEIR APPLICABLE STANDARD(S) AND ARE FOUND TO BE CAPABLE OF SUPPORTING ALL LOADS IMPOSED ON THEM UNDER THE GUIDELINES OF THIS DOCUMENT. ANY SUBSTRATES OR CONDITIONS OUTSIDE OF WHAT IS SHOWN HERE-IN SHALL BE SUBJECT TO JOB SPECIFIC ENGINEER'S REVIEW & CERTIFICATION.



**EXTERIOR ELEVATION:  
SINGLE WINDOW  
(NAIL FIN MOUNT)**  
SCALE: 3/4" = 1'-0"

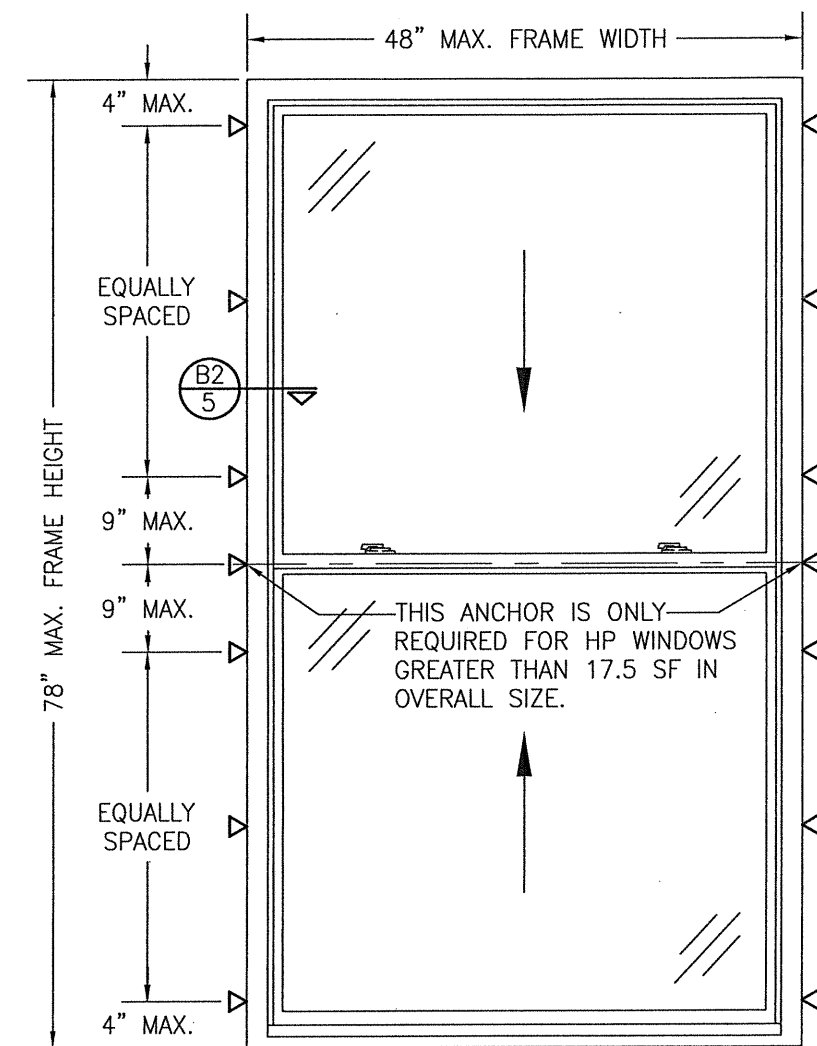
FIN ANCHOR WITHIN 4" OF CORNERS & 8" MAX. O.C. WITH STANDARD WINDOWS OR 4" MAX. O.C. WITH HIGH PERFORMANCE WINDOWS (SEE PRESSURE TABLE ON THIS SHEET FOR STANDARD VS. HIGH PERFORMANCE CONDITIONS). SEE "FRAME ANCHOR REQUIREMENTS TABLE" ON THIS SHEET FOR FIN ANCHOR REQUIREMENTS.

FRAME SCREWS WHERE SHOWN AT CHECK RAIL ENDS (3 PER END 4" APART). SEE "FRAME ANCHOR REQUIREMENTS TABLE" ON THIS SHEET FOR REQUIREMENTS.

NOTE: SCREWS ARE ONLY REQUIRED WITH HP (HIGH PERFORMANCE) WINDOWS

THESE DRAWINGS ARE APPLICABLE ONLY TO THE PRODUCT SPECIFIED. THEY MAY NOT BE USED FOR THE ASSEMBLY AND/OR INSTALLATION OF ANY OTHER PRODUCT NOR MAY THEY BE USED FOR RATIONAL AND/OR LOCAL APPROVAL OF ANY PRODUCT NOT PRODUCED BY THE MANUFACTURER STATED ON THESE DRAWINGS.

DRAWN BY:	W.W.S.	CHECKED BY:	W.W.S.
PLOT:	1-16	DATE:	01/28/20
NO.		DATE	
BY			
REVISION DESCRIPTION			



**EXTERIOR ELEVATION:  
SINGLE WINDOW  
(FRAME SCREW MOUNT)**  
SCALE: 3/4" = 1'-0"

NO ANCHORS REQ'D AT HEAD & SILL

THESE 2 ANCHORS ARE NOT REQ'D WHEN WINDOW FRAME HEIGHT IS 62" OR LESS (TYP. EACH SIDE)

FRAME SCREWS WHERE SHOWN. SEE "FRAME ANCHOR REQUIREMENTS TABLE" ON THIS SHEET FOR REQUIREMENTS.

**FRAME ANCHOR REQUIREMENTS TABLE**

OPENING TYPE (SUBSTRATE)	FRAME/NAIL FIN TO OPENING FASTENER TYPE	MINIMUM EMBED	MINIMUM EDGE DIST.
<b>(1) FRAME &amp; INSTALLATION CLIP SCREWS (SERIES 20)</b>			
MIN. 2X4 WOOD FRAME OR BUCK (MIN. GR. 3 & G=0.55)	NO. 10 SMS OR WOOD SCREW	1 1/4"	3/4"
MIN. 18 GA. 33 KSI METAL STUD	NO. 10 GR. 5 SELF TAP/DRILL SCREW	FULL	1/2"
MIN. 1/8" THK A36 STEEL	NO. 10 GR. 5 SELF TAP/DRILL SCREW	FULL	1/2"
MIN. 1/8" THK 6063-T5 ALUM.	NO. 10 GR. 5 SELF TAP/DRILL SCREW	FULL	1/2"
C-90 CMU/2500 PSI CONCRETE	(2) 1/4" CONCRETE SCREW	1 1/4"	2"
<b>NAILING FIN FASTENERS (SERIES 25)</b>			
MIN. 2X4 WOOD FRAME OR BUCK (MIN. GR. 3 & G=0.55)	(3) NO. 8 X 1 1/2" SMS	1 3/8"	1/2"
MIN. 2X4 WOOD FRAME OR BUCK (MIN. GR. 3 & G=0.55)	11 GA. ROOFING NAIL	1 3/8"	1/2"
MIN. 1/8" THK A36 STEEL	(3) NO. 8 GR. 5 SELF TAP/DRILL SCREW	FULL	1/2"
MIN. 1/8" THK 6063-T5 ALUM.	(3) NO. 8 GR. 5 SELF TAP/DRILL SCREW	FULL	1/2"

- FRAME SCREWS SHALL BE PAN HEAD OR HEX HEAD SCREW
- CONCRETE SCREWS SHALL BE ELCO ULTRACONS (C.S.), ELCO CRETE-FLEX (S.S.), ITW RAMSET/RED HEAD TAPCONS (C.S. OR S.S.) OR HILTI KWIK-CON II (C.S OR S.S.).
- WHEN SCREWS ARE USED WITH THE NAIL FIN, THEY MUST BE A WAFFLE HEAD SCREW OR HAVE A FLAT WASHER AT THE SCREW HEAD.

**ALLOWABLE DESIGN PRESSURE  
(SINGLE WINDOW)**

MAXIMUM WINDOW FRAME SIZE (IN.)	ALLOWABLE PRESSURE (PSF)
(1) 36" X 72"	35
(1) 36" X 78"	25
(1) 48" X 72"	25
(1) 48" X 78"	20
(2) 48" X 72"	50

- STANDARD PERFORMANCE WINDOW; PLASTIC TILT LATCHES ON UPPER RAIL & BOTTOM SASH INTERLOCK.
- HIGH PERFORMANCE WINDOW; PLASTIC TILT LATCHES ON UPPER RAIL & METAL TILT LATCHES ON BOTTOM SASH INTERLOCK.

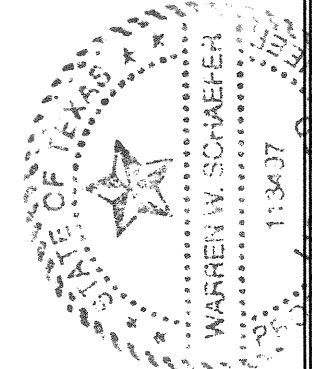
PRESSURE SHOWN IN THIS TABLE IS FOR INSTALLATION CONDITIONS ONLY. THE GOVERNING DESIGN PRESSURE ON THE WINDOWS SHALL BE THE LESSER OF THAT SHOWN IN THE INDIVIDUAL WINDOW'S STATE APPROVAL OR THAT SHOWN IN THIS TABLE.

CONDITIONS SHOWN IN THESE DRAWINGS ARE GOVERNED BY INSTALLATION REQUIREMENTS ONLY. THE GOVERNING CONDITIONS ON ANY SPECIFIC PRODUCT SHALL BE THE LESSER OF THOSE SPECIFIED IN THE PRODUCTS TDI APPROVAL OR THAT SHOWN IN THESE DRAWINGS.

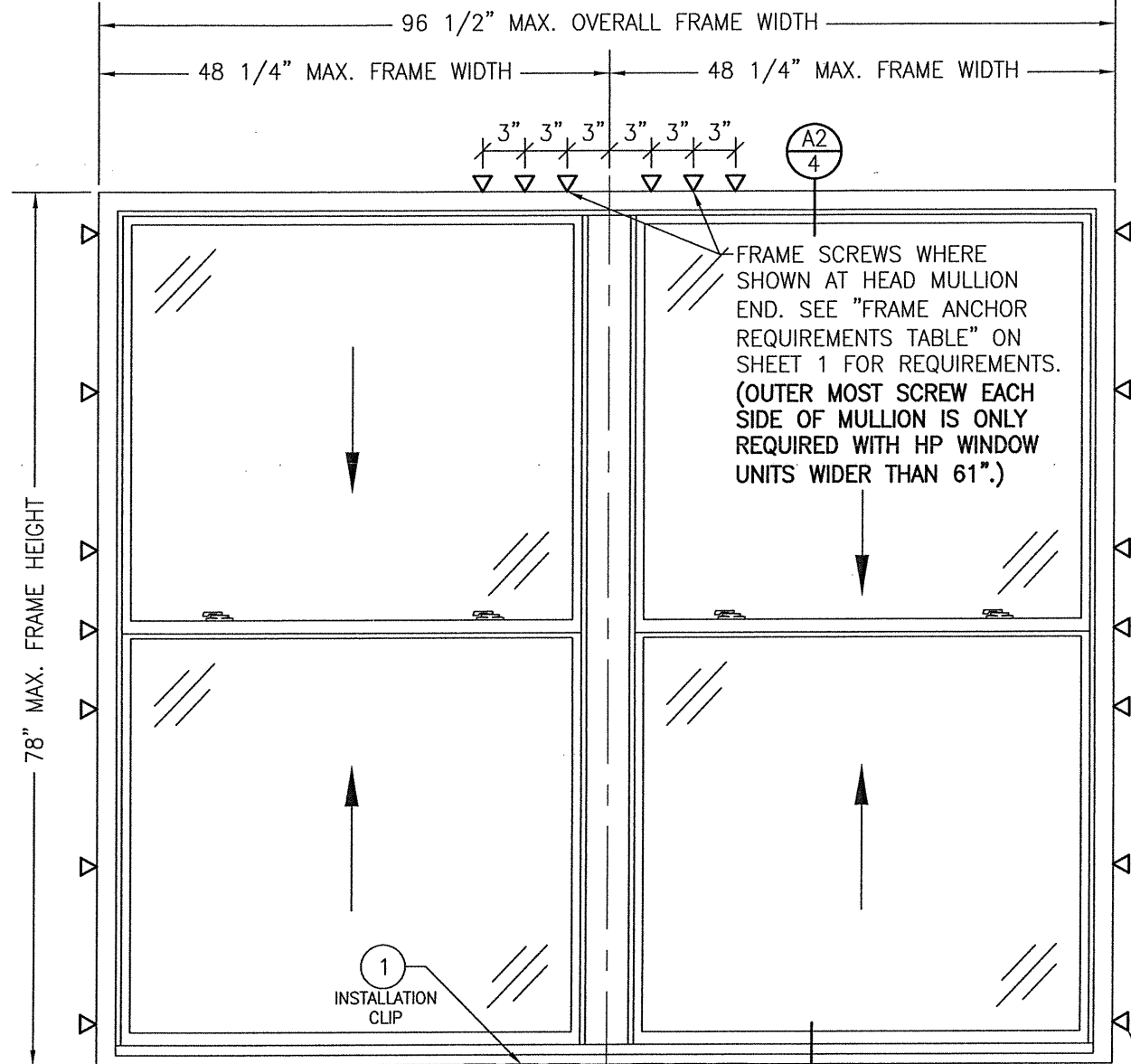
**PELLA CORPORATION**  
2000 PROLINE PLACE  
GETTYSBURG, PA 17325  
717-334-0099



**W. W. SCHAEFER ENGINEERING & CONSULTING, P.A. (REG. NO. F-14980)**  
7480 150TH COURT NORTH  
PALM BEACH GARDENS, FL 33418  
PHONE: 561-744-3424



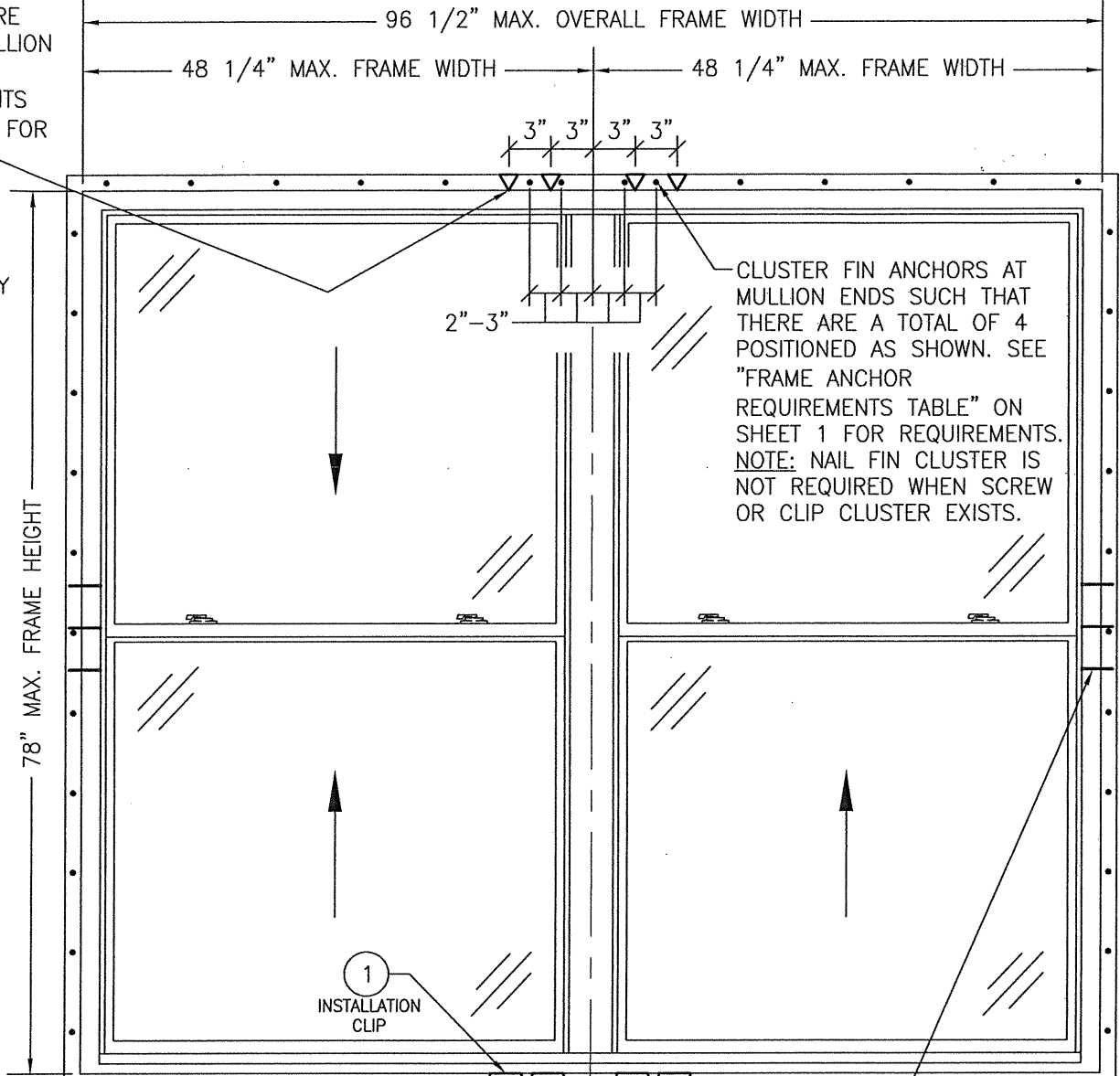
DRAWING NO.	REV.
1596T	
SHEET NO.	
1	OF 5



FRAME SCREWS WHERE SHOWN AT HEAD MULLION END. SEE "FRAME ANCHOR REQUIREMENTS TABLE" ON SHEET 1 FOR REQUIREMENTS.

NOTE: SCREW CLUSTER IS ONLY REQUIRED WITH HP (HIGH PERFORMANCE) WINDOWS

FRAME SCREWS WHERE SHOWN AT HEAD MULLION END. SEE "FRAME ANCHOR REQUIREMENTS TABLE" ON SHEET 1 FOR REQUIREMENTS. (OUTER MOST SCREW EACH SIDE OF MULLION IS ONLY REQUIRED WITH HP WINDOW UNITS WIDER THAN 61".)



CLUSTER FIN ANCHORS AT MULLION ENDS SUCH THAT THERE ARE A TOTAL OF 4 POSITIONED AS SHOWN. SEE "FRAME ANCHOR REQUIREMENTS TABLE" ON SHEET 1 FOR REQUIREMENTS. NOTE: NAIL FIN CLUSTER IS NOT REQUIRED WHEN SCREW OR CLIP CLUSTER EXISTS.

INSTALLATION CLIPS WHERE SHOWN. SEE "FRAME ANCHOR REQUIREMENTS TABLE" ON SHEET 1 FOR REQUIREMENTS. NOTE: CLIPS MAY BE USED AT HEAD ALSO IN LIEU OF FRAME SCREWS

EXTERIOR ELEVATION:  
TWO-WIDE WINDOW  
(NAIL FIN MOUNT)  
SCALE: 3/4" = 1'-0"

SEE SINGLE WINDOW ELEVATION FOR FIN ANCHOR REQUIREMENTS & POSITIONS AROUND WINDOWS

INSTALLATION CLIPS WHERE SHOWN. SEE "FRAME ANCHOR REQUIREMENTS TABLE" ON SHEET 1 FOR REQUIREMENTS. NOTE: CLIPS MAY BE USED AT HEAD ALSO IN LIEU OF FRAME SCREWS. (OUTER MOST CLIP EACH SIDE OF MULLION IS ONLY REQUIRED WITH HP WINDOW UNITS WIDER THAN 61".)

EXTERIOR ELEVATION:  
TWO-WIDE WINDOW  
(FRAME SCREW/INSTALLATION CLIP MOUNT)  
SCALE: 3/4" = 1'-0"


SEE SINGLE WINDOW ELEVATION FOR FRAME ANCHOR REQUIREMENTS & POSITIONS AT SIDES OF WINDOWS

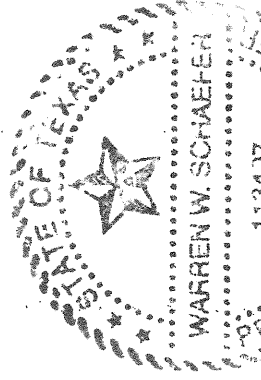
ALLOWABLE DESIGN PRESSURE  
(TWO-WIDE WINDOW)

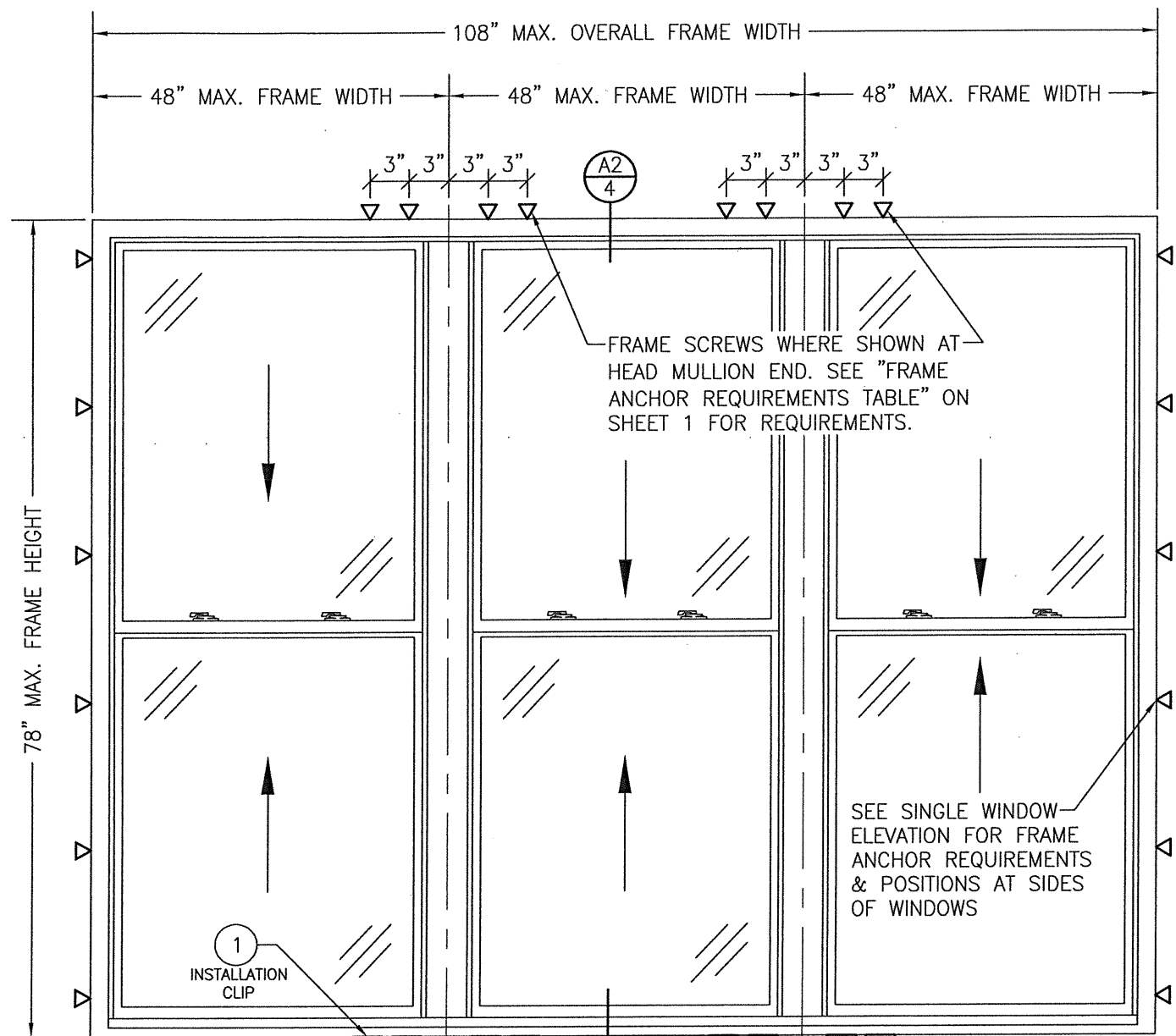
OVERALL FRAME SIZE (IN.)	ALLOWABLE PRESSURE (PSF)
(1) 72 1/2" X 72"	35
(2) 72 1/2" X 72"	50
(1) 72 1/2" X 78"	25
(1) 96 1/2" X 72"	25
(1) 88 1/2" X 78"	20

(1) STANDARD PERFORMANCE WINDOW; PLASTIC TILT LATCHES ON UPPER RAIL & BOTTOM SASH INTERLOCK.  
(2) HIGH PERFORMANCE WINDOW; PLASTIC TILT LATCHES ON UPPER RAIL & METAL TILT LATCHES ON BOTTOM SASH INTERLOCK.  
PRESSURE SHOWN IN THIS TABLE IS FOR INSTALLATION CONDITIONS ONLY. THE GOVERNING DESIGN PRESSURE ON THE WINDOWS SHALL BE THE LESSER OF THAT SHOWN IN THE INDIVIDUAL WINDOW'S STATE APPROVAL OR THAT SHOWN IN THIS TABLE.

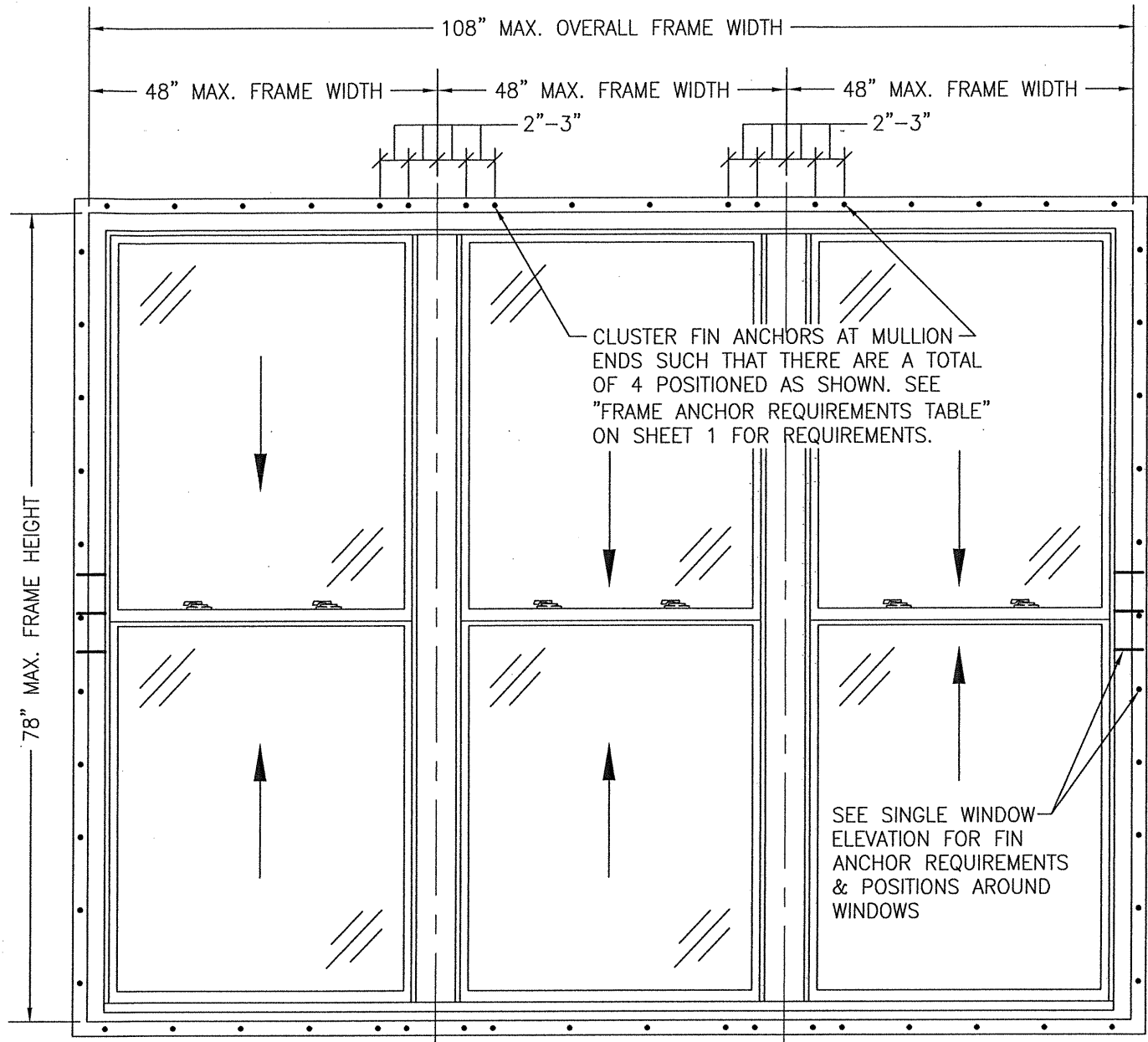
NOTE: CLIP CLUSTER IS ONLY REQUIRED WITH HP (HIGH PERFORMANCE) WINDOWS

DRAWN BY: W.W.S.	CHECKED BY: W.W.S.
PLOT: 1=16	DATE: 01/28/20
DATE	
BY	
REVISION DESCRIPTION	
NO.	
ENDORSED NON-IMPACT DOUBLE HUNG WINDOWS JOB INFORMATION: PELLA CORPORATION 2000 PROLINE PLACE GETTYSBURG, PA 17325 717-334-0099 	
CONSULTANTS W. W. SCHAEFER ENGINEERING & CONSULTING, P.A. (REG. NO. F-14980) 7480 150TH COURT NORTH PALM BEACH GARDENS, FL 33418 PHONE: 561-744-3424	
DRAWING TITLE ENDORSED NON-IMPACT DOUBLE HUNG WINDOWS DRAWING NO. 1596T SHEET NO. 2 OF 5 JUL 17 2020 WARREN W. SCHAEFER, P.E. P.E. NO. 113497	





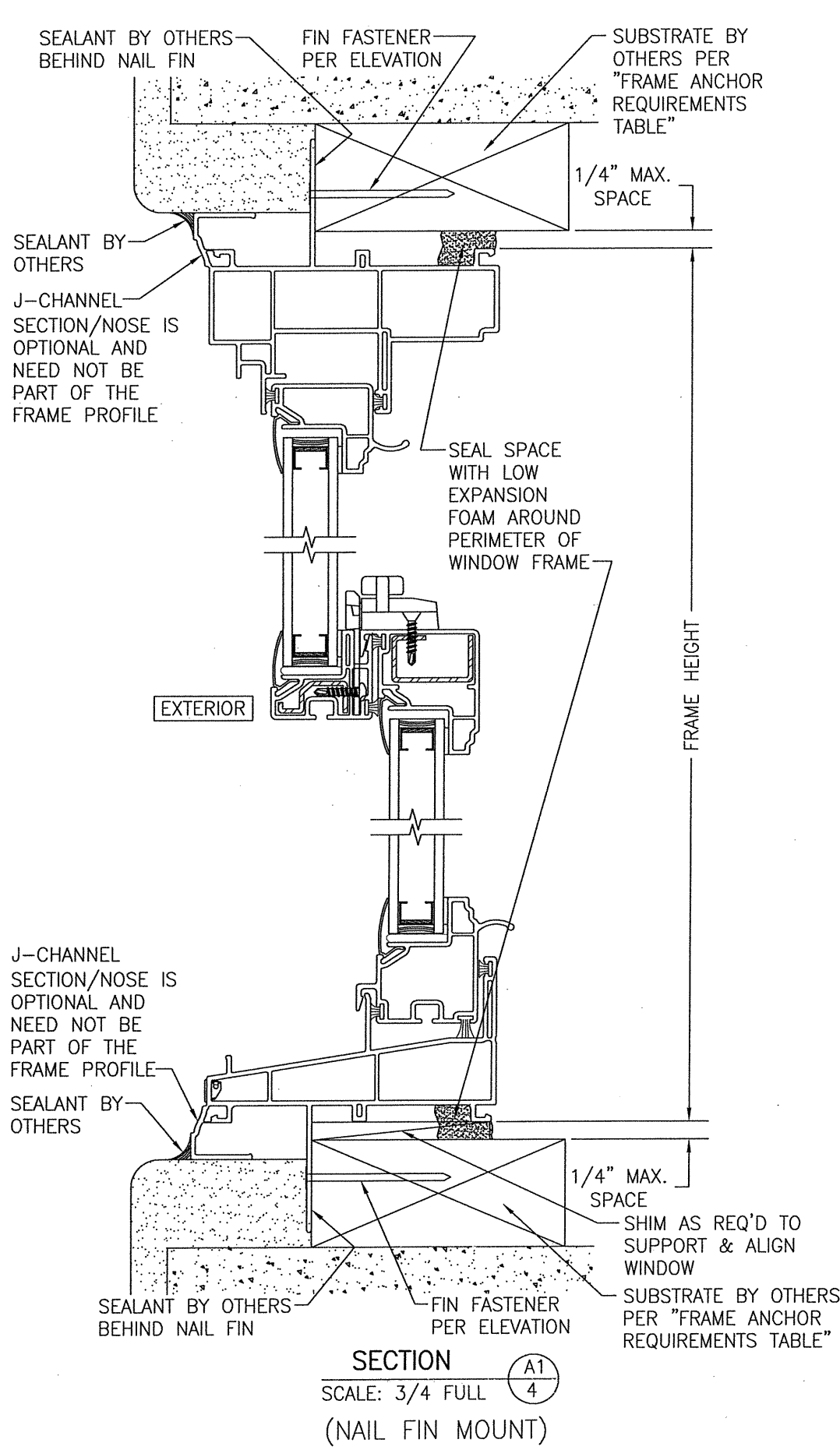
**EXTERIOR ELEVATION;  
THREE-WIDE WINDOW  
(FRAME SCREW/INSTALLATION CLIP MOUNT)**  
SCALE: 3/4" = 1'-0"



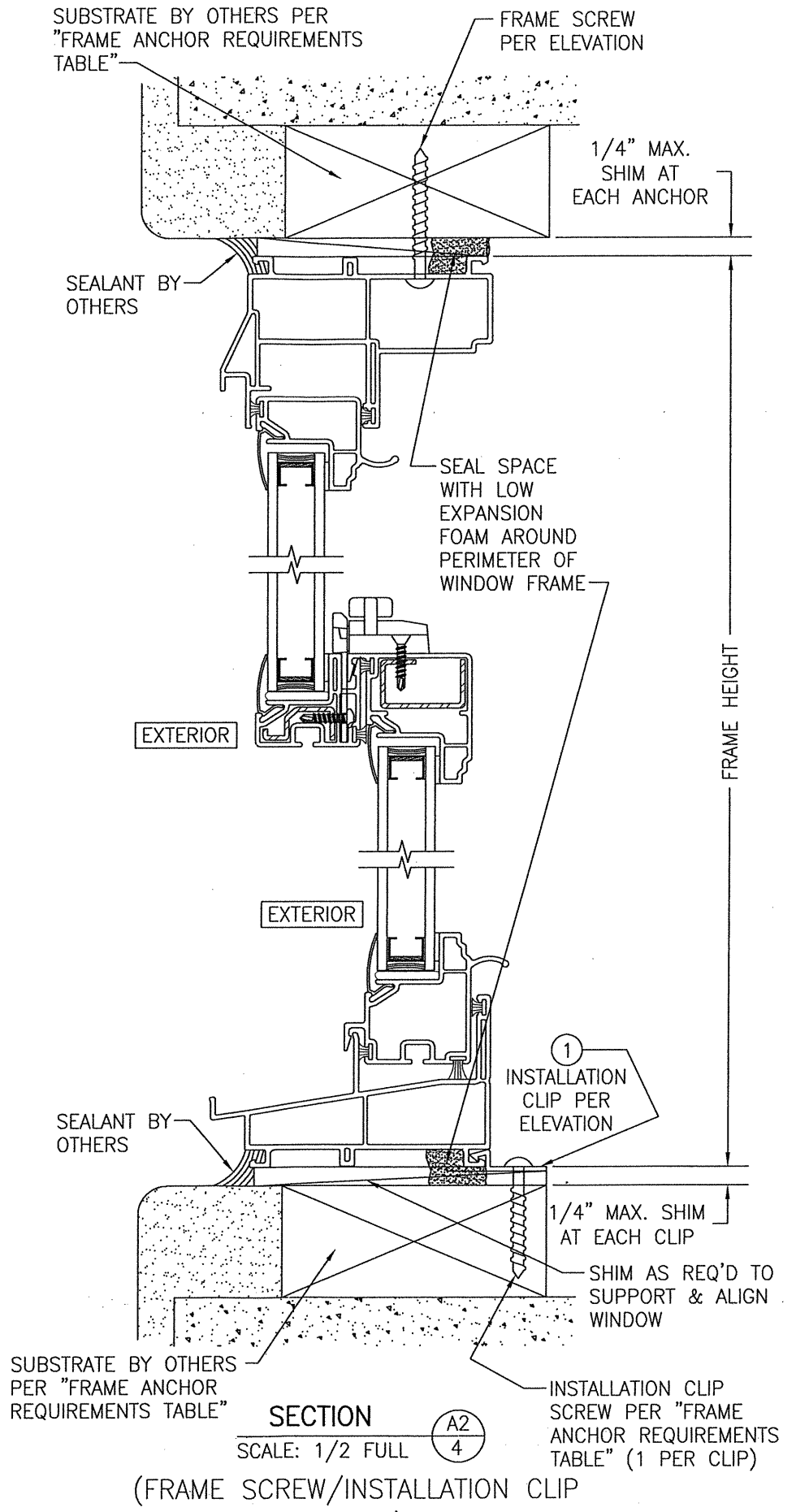
**EXTERIOR ELEVATION;  
THREE-WIDE WINDOW  
(NAIL FIN MOUNT)**  
SCALE: 3/4" = 1'-0"

ALLOWABLE DESIGN PRESSURE (THREE-WIDE WINDOW)	
OVERALL FRAME SIZE (IN.)	ALLOWABLE PRESSURE (PSF)
(1) 109" X 72"	35
(1) 88 3/8" X 78"	20
(1) STANDARD PERFORMANCE WINDOW; PLASTIC TILT LATCHES ON UPPER RAIL & BOTTOM SASH INTERLOCK.	
PRESSURE SHOWN IN THIS TABLE IS FOR INSTALLATION CONDITIONS ONLY. THE GOVERNING DESIGN PRESSURE ON THE WINDOWS SHALL BE THE LESSER OF THAT SHOWN IN THE INDIVIDUAL WINDOW'S STATE APPROVAL OR THAT SHOWN IN THIS TABLE.	

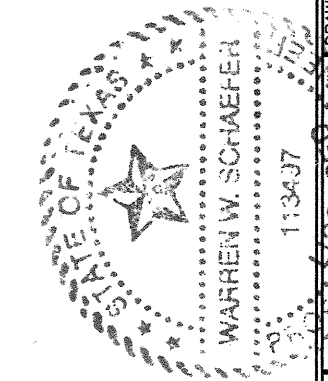
DRAWN BY: W.W.S.	CHECKED BY: W.W.S.
PLOT: 1-16	DATE: 01/28/20
NO.	REVISION DESCRIPTION
NO.	REVISION DESCRIPTION
NO.	REVISION DESCRIPTION
JOB INFORMATION: <b>PELLA CORPORATION</b> 2000 PROLINE PLACE GETTYSBURG, PA 17325 717-334-0099	
CONSULTANTS: <b>W. W. SCHAEFER ENGINEERING &amp; CONSULTING, P.A. (REG. NO. F-14980)</b> 7480 150TH COURT NORTH PALM BEACH GARDENS, FL 33418 PHONE: 561-744-3424	
DRAWING TITLE: <b>ENDORSED NON-IMPACT DOUBLE HUNG WINDOWS</b>	
DRAWING NO. <b>1596T</b>	REV.
SHEET NO. <b>3</b>	OF <b>5</b>

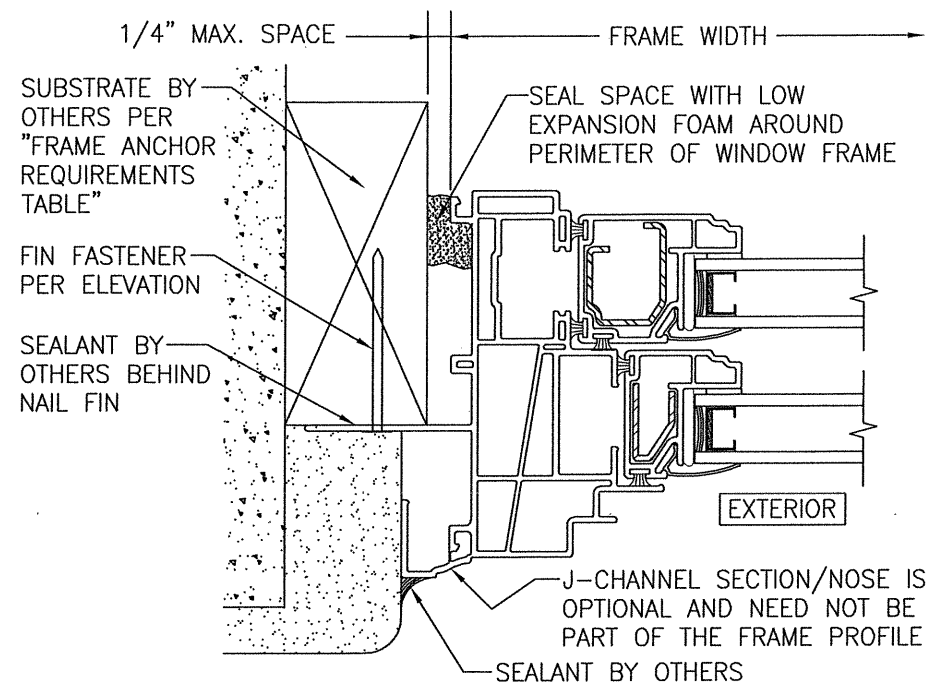


SECTION A1  
SCALE: 3/4 FULL  
(NAIL FIN MOUNT)

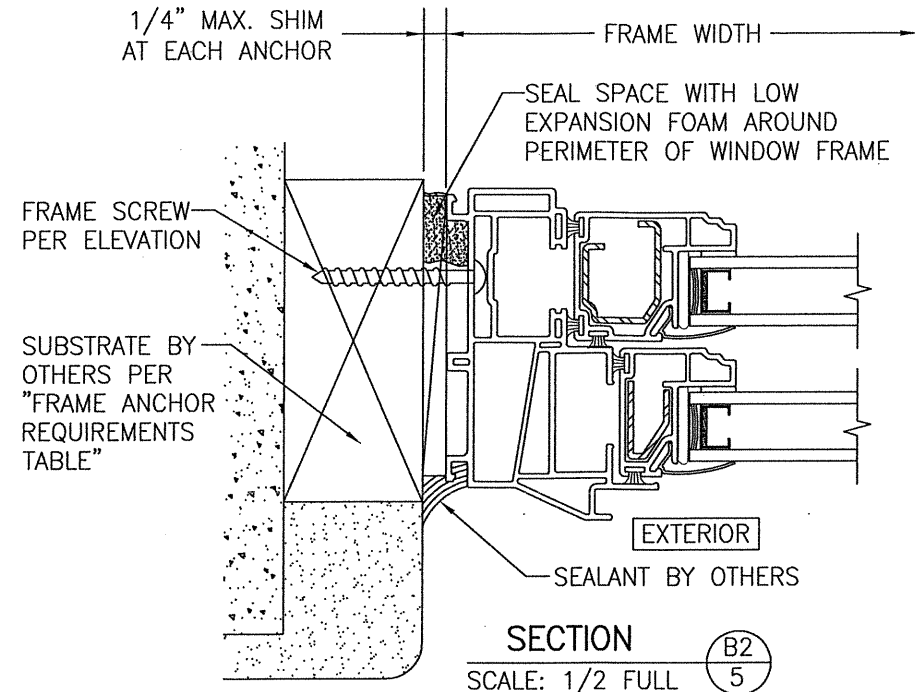


SECTION A2  
SCALE: 1/2 FULL  
(FRAME SCREW/INSTALLATION CLIP MOUNT)

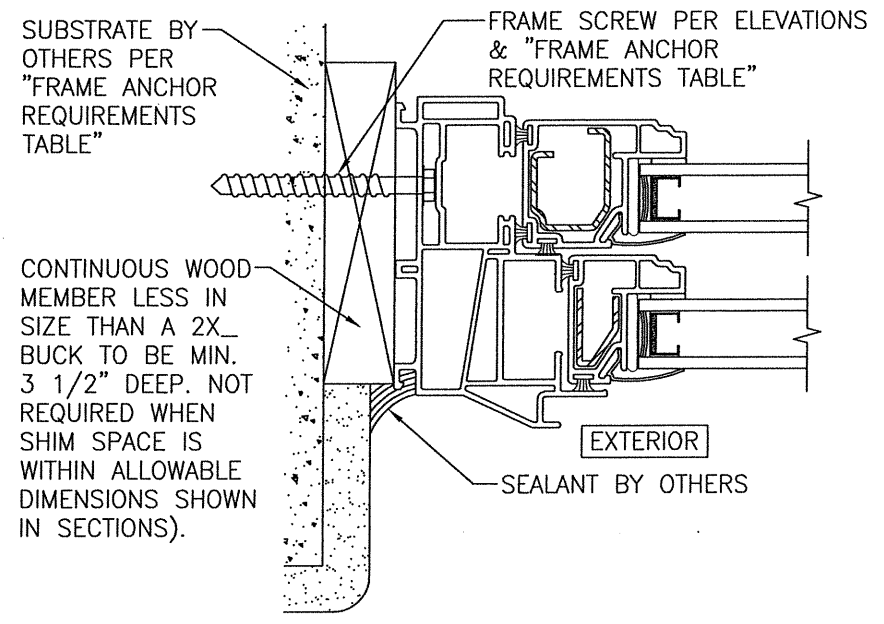
DRAWN BY: W.W.S.		CHECKED BY: W.W.S.	
PLOT: 1=2		DATE: 01/28/20	
NO.	REVISION DESCRIPTION	BY	DATE
DRAWING TITLE <b>ENDORSED NON-IMPACT DOUBLE HUNG WINDOWS</b>			
JOB INFORMATION: <b>PELLA CORPORATION</b> 2000 PROLINE PLACE GETTYSBURG, PA 17325 717-334-0099			
CONSULTANTS <b>W. W. SCHAEFER ENGINEERING &amp; CONSULTING, P.A. (REG. NO. F-14980)</b> 7480 150TH COURT NORTH PALM BEACH GARDENS, FL 33418 PHONE: 561-744-3424			
			
DRAWING NO. <b>1596T</b>		REV.	
SHEET NO. <b>4</b>		OF <b>5</b>	



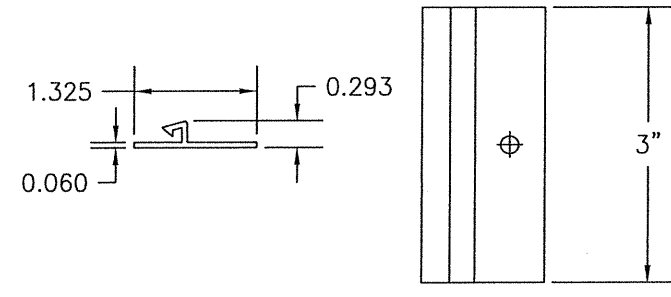
**SECTION B1**  
SCALE: 1/2 FULL  
(NAIL FIN MOUNT)



**SECTION B2**  
SCALE: 1/2 FULL  
(FRAME SCREW MOUNT)

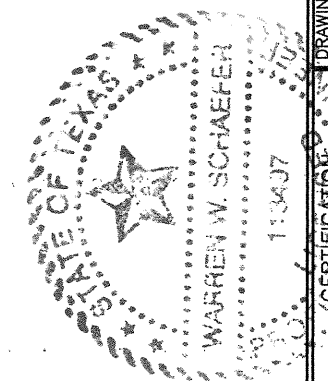


**OPTIONAL SERIES 20 DIRECT MOUNT DETAIL TO SUBSTRATE WITH SPACER**  
(FRAME SCREW MOUNT)



**1 INSTALLATION CLIP**  
(VINYL)

DRAWN BY: W.W.S.		CHECKED BY: W.W.S.	
PLOT: 1=2		DATE: 01/28/20	
NO.	REVISION DESCRIPTION	BY	DATE
DRAWING TITLE <b>ENDORSED NON-IMPACT DOUBLE HUNG WINDOWS</b>			
JOB INFORMATION: <b>PELLA CORPORATION</b> 2000 PROLINE PLACE GETTYSBURG, PA 17325 717-334-0099			
CONSULTANTS <b>W. W. SCHAEFER ENGINEERING &amp; CONSULTING, P.A. (REG. NO. F-14980)</b> 7480 150TH COURT NORTH PALM BEACH GARDENS, FL 33418 PHONE: 561-744-3424			
DRAWING NO. <b>1596T</b>			
SHEET NO. <b>5 OF 5</b>			



**JUL 17 2020**  
WARREN W. SCHAEFER, P.E.  
P.E. NO. 113407