

| REVISIONS |                              |          |          |
|-----------|------------------------------|----------|----------|
| REV       | DESCRIPTION                  | DATE     | APPROVED |
| A         | REVISED PER NEW REQUIREMENTS | 07/02/19 | R.L.     |

NOTES:

1. THE PRODUCT SHOWN HEREIN IS DESIGNED AND MANUFACTURED TO COMPLY WITH REQUIREMENTS OF THE 2006 IBC AND THE 2006 IRC WITH STATE OF TEXAS MODIFICATIONS AND WITH THE 2009 IBC, 2009 IRC, 2012 IBC, 2012 IRC, 2015 IBC AND 2015 IRC.
2. WOOD FRAMING AND MASONRY OPENING TO BE DESIGNED AND ANCHORED TO PROPERLY TRANSFER ALL LOADS TO STRUCTURE. FRAMING AND MASONRY OPENING IS THE RESPONSIBILITY OF THE ARCHITECT OR ENGINEER OF RECORD.
3. 1X BUCK OVER MASONRY/CONCRETE IS OPTIONAL.
4. WHERE SHIM OR BUCK THICKNESS IS LESS THAN 1-1/2" UNITS MUST BE ANCHORED THROUGH THE FRAME IN ACCORDANCE WITH MANUFACTURER'S PUBLISHED INSTALLATION INSTRUCTIONS. ANCHORS SHALL BE SECURELY FASTENED DIRECTLY INTO MASONRY, CONCRETE OR OTHER STRUCTURAL SUBSTRATE MATERIAL.
5. WHERE WOOD BUCK THICKNESS IS 1-1/2" OR GREATER, BUCK SHALL BE SECURELY FASTENED TO MASONRY, CONCRETE OR OTHER STRUCTURAL SUBSTRATE. UNITS MAY BE ANCHORED THROUGH FRAME TO SECURED WOOD BUCK IN ACCORDANCE WITH MANUFACTURER'S PUBLISHED INSTALLATION INSTRUCTIONS.
6. WHERE 1X BUCK IS NOT USED DISSIMILAR MATERIALS MUST BE SEPARATED WITH APPROVED COATING OR MEMBRANE. SELECTION OF COATING OR MEMBRANE IS THE RESPONSIBILITY OF THE ARCHITECT OR ENGINEER OF RECORD.
7. BUCKS SHALL EXTEND BEYOND UNIT FRAME INTERIOR FACE SO THAT FULL FRAME SUPPORT IS PROVIDED.
8. FOR FIN INSTALLATION SHIM AS NEEDED. FOR FRAME INSTALLATION SHIM AS REQUIRED AT EACH ANCHOR LOCATION WITH LOAD BEARING SHIM. SHIM WHERE SPACE OF 1/16" OR GREATER OCCURS. MAXIMUM ALLOWABLE SHIM STACK TO BE 1/4".
9. SHIMS SHALL BE LOCATED, APPLIED AND MADE FROM MATERIALS AND THICKNESS CAPABLE OF SUSTAINING APPLICABLE LOADS.
10. WIND LOAD DURATION FACTOR Cd=1.6 WAS USED FOR WOOD ANCHOR CALCULATIONS.
11. FRAME MATERIAL: EXTRUDED RIGID PVC.
12. UNITS MUST BE GLAZED PER ASTM E1300-04/09.
13. APPROVED IMPACT PROTECTIVE SYSTEM IS REQUIRED FOR THIS PRODUCT IN WIND BORNE DEBRIS REGIONS.
14. FOR ANCHORING THROUGH FIN INTO WOOD FRAMING OR 2X BUCK USE #8 WOOD SCREWS WITH SUFFICIENT LENGTH TO ACHIEVE A 1 1/4" MINIMUM EMBEDMENT INTO SUBSTRATE. LOCATE ANCHORS AS SHOWN IN ELEVATIONS AND INSTALLATION DETAILS.
15. FOR ANCHORING THROUGH FRAME INTO WOOD FRAMING OR 2X BUCK USE #8 WOOD SCREWS WITH SUFFICIENT LENGTH TO ACHIEVE A 1 1/4" MINIMUM EMBEDMENT INTO SUBSTRATE. LOCATE ANCHORS AS SHOWN IN ELEVATIONS AND INSTALLATION DETAILS.
16. FOR ANCHORING THROUGH FRAME INTO MASONRY/CONCRETE USE 3/16" TAPCONS WITH SUFFICIENT LENGTH TO ACHIEVE A 1 1/4" MINIMUM EMBEDMENT INTO SUBSTRATE WITH 2" MINIMUM EDGE DISTANCE. LOCATE ANCHORS AS SHOWN IN ELEVATIONS AND INSTALLATION DETAILS.
17. FOR ANCHORING THROUGH FRAME INTO METAL STRUCTURE USE #8 SMS OR SELF DRILLING SCREWS WITH SUFFICIENT LENGTH TO ACHIEVE 3 THREADS MINIMUM BEYOND STRUCTURE INTERIOR WALL. LOCATE ANCHORS AS SHOWN IN ELEVATIONS AND INSTALLATION DETAILS.
18. ALL FASTENERS TO BE CORROSION RESISTANT.
19. INSTALLATION ANCHORS SHALL BE INSTALLED IN ACCORDANCE WITH ANCHOR MANUFACTURER'S INSTALLATION INSTRUCTIONS AND ANCHORS SHALL NOT BE USED IN SUBSTRATES WITH STRENGTHS LESS THAN THE MINIMUM STRENGTH SPECIFIED BELOW:
  - A. WOOD: MINIMUM SPECIFIC GRAVITY OF G=0.42
  - B. CONCRETE: MINIMUM COMPRESSIVE STRENGTH OF 2,000 PSI.
  - C. MASONRY: HOLLOW/FILLED BLOCK PER ASTM C90 WITH Fm=2,000PSI MINIMUM.
  - D. METAL STRUCTURE: STEEL 18GA (.048") FY=33KSI/FU=52KSI OR ALUMINUM 6063-T5 FU=30KSI .048" THICK MINIMUM

SIGNED: 07/23/2019

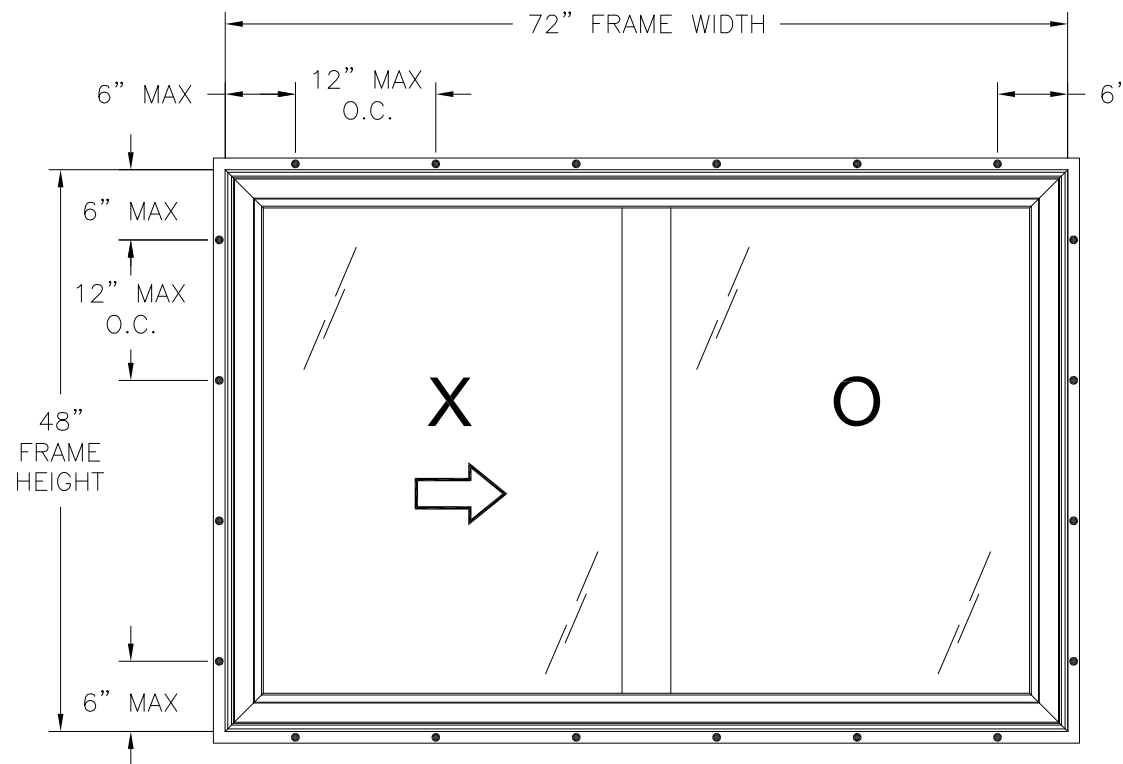
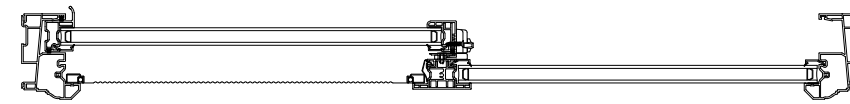
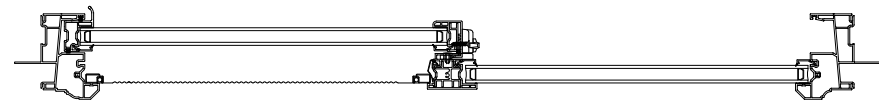
| TABLE OF CONTENTS |                          |
|-------------------|--------------------------|
| SHEET NO.         | DESCRIPTION              |
| 1                 | NOTES                    |
| 2                 | ANCHORING AND ELEVATIONS |
| 3 - 5             | INSTALLATION DETAILS     |
| 6                 | COMPONENTS               |

|   |                     |              |
|---|---------------------|--------------|
| <b>WINDOW MART</b><br>5760 ALBERT PIKE<br>ROYAL, AR 71968   |                     |              |
| SERIES 7300 VINYL HORIZONTAL SLIDER WINDOW<br>72" x 48" NON-IMPACT<br>NOTES                         |                     |              |
| DRAWN:<br>A.R.  | DWG NO.<br>08-02745 | REV<br>A     |
| SCALE NTS   | DATE 07/02/19       | SHEET 1 OF 6 |
| L. ROBERTO LOMAS P.E.<br>1432 WOODFORD RD LEWISVILLE, NC 27023<br>434-688-0609 rllomas@rlomaspe.com |                     |              |

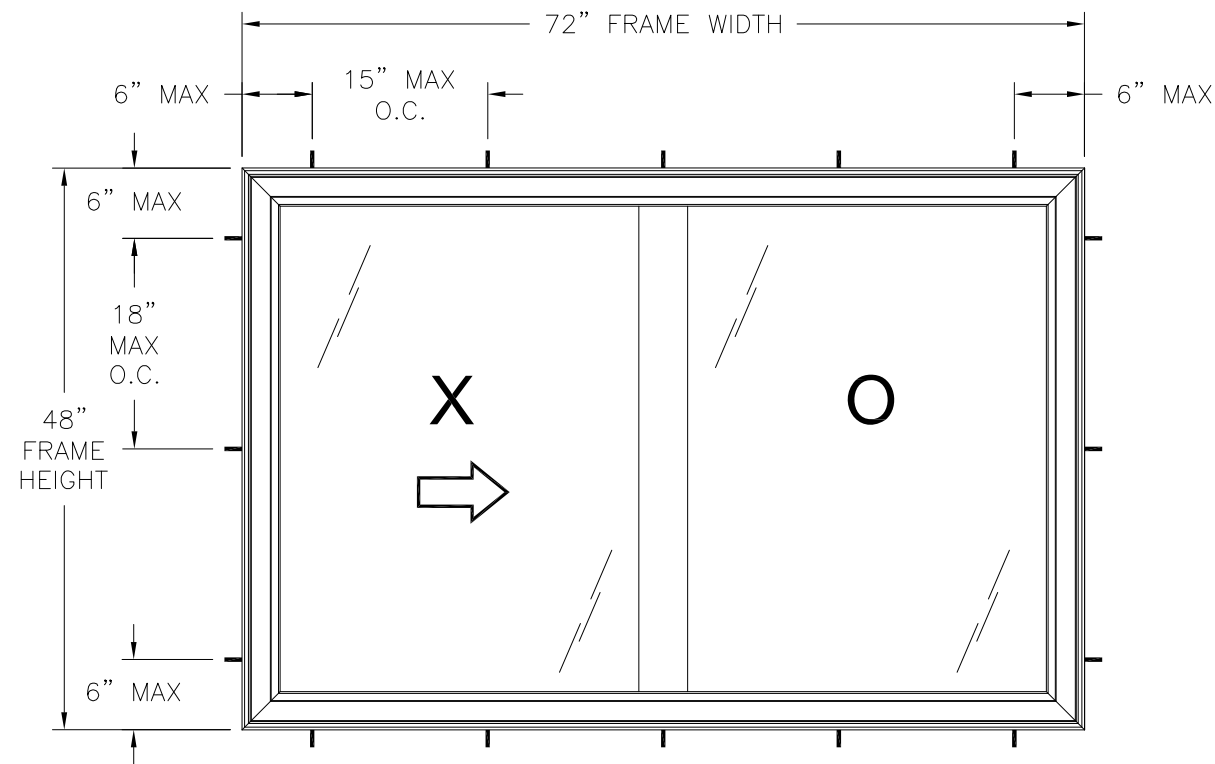


Luis R. Lomas P.E.  
TX No.: 101889

| REVISIONS |                              |          |          |
|-----------|------------------------------|----------|----------|
| REV       | DESCRIPTION                  | DATE     | APPROVED |
| A         | REVISED PER NEW REQUIREMENTS | 07/02/19 | R.L.     |



**7300 NC HORIZONTAL SLIDER XO**  
EXTERIOR VIEW  
FIN INSTALLATION



**7300 NC HORIZONTAL SLIDER XO**  
EXTERIOR VIEW  
FRAME INSTALLATION

| DESIGN PRESSURE RATING | IMPACT RATING |
|------------------------|---------------|
| ±35.0PSF               | NONE          |

72" X 48" UNIT SHOWN. OTHER SIZES APPROVED AS LONG AS FRAME AREA DOES NOT EXCEED 24.0 FT<sup>2</sup>

**NOTES:**

1. SASH SIZE: 35 1/4" X 45 1/8"
2. SASH D.L.O.: 32 3/4" X 42 5/8"
3. FIXED LITE D.L.O.: 32 11/16" X 43"

**HARDWARE SCHEDULE**

|    |   |
|----|---|
| A. | (2) METAL CAM LOCK WITH KEEPER (611/9331) AT LOCK STILE, 9 1/2" FROM EACH END |
| B. | (2) ROLLER ASSEMBLY AT BOTTOM RAIL, ONE AT EACH END                           |
| C. | ALUMINUM REINFORCEMENT (A6189) AT FIXED MEETING RAIL                          |
| D. | ALUMINUM REINFORCEMENT (A6202) AT LOCK STILE                                  |

**WINDOW MART**

5760 ALBERT PIKE  
ROYAL, AR 71968

SERIES 7300 VINYL HORIZONTAL SLIDER WINDOW  
72" x 48" NON-IMPACT  
ELEVATIONS

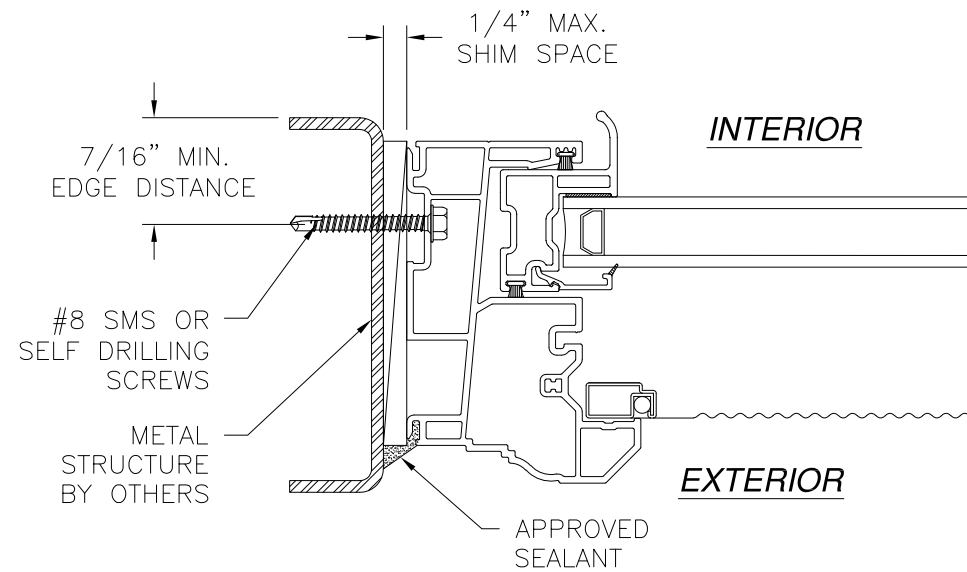
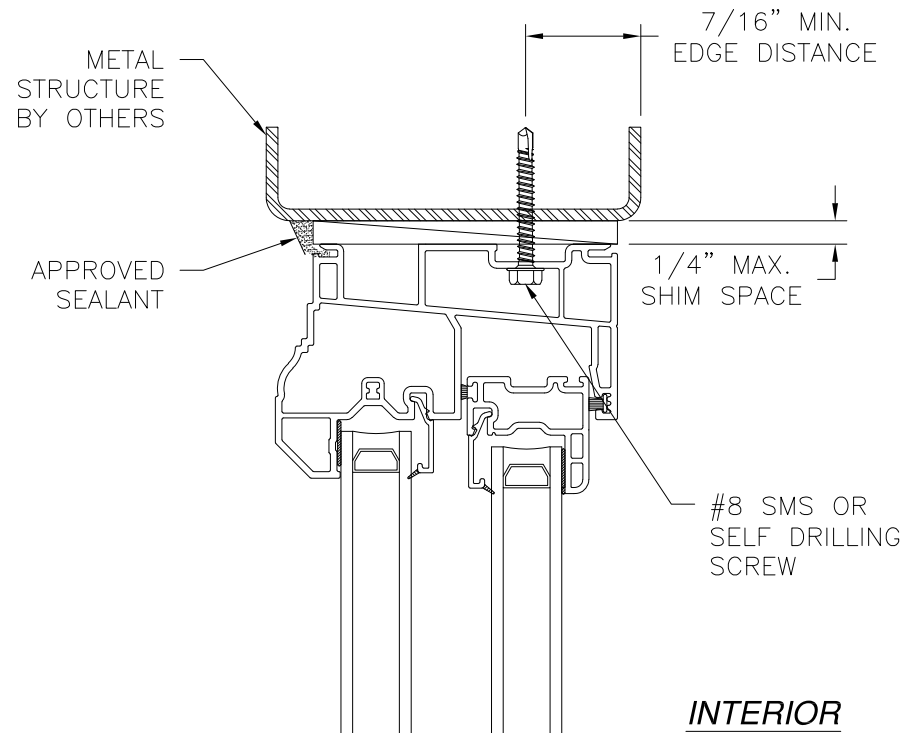
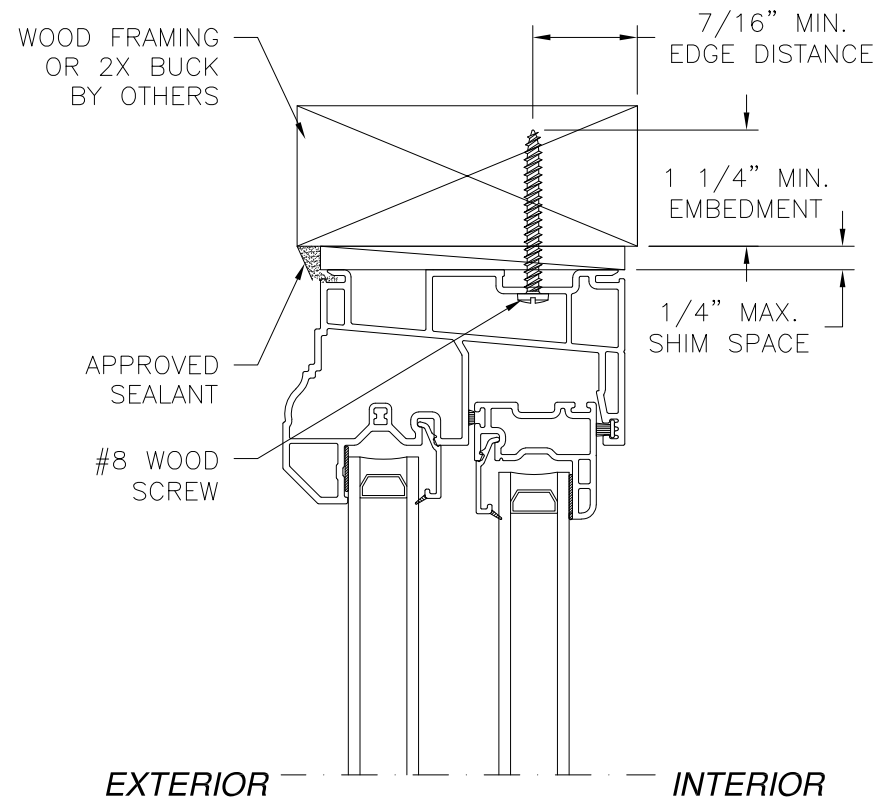
|                |                     |              |
|----------------|---------------------|--------------|
| DRAWN:<br>A.R. | DWG NO.<br>08-02745 | REV<br>A     |
| SCALE NTS      | DATE 07/02/19       | SHEET 2 OF 6 |

L. ROBERTO LOMAS P.E.  
1432 WOODFORD RD LEWISVILLE, NC 27023  
434-688-0609 rllomas@lrlomaspe.com

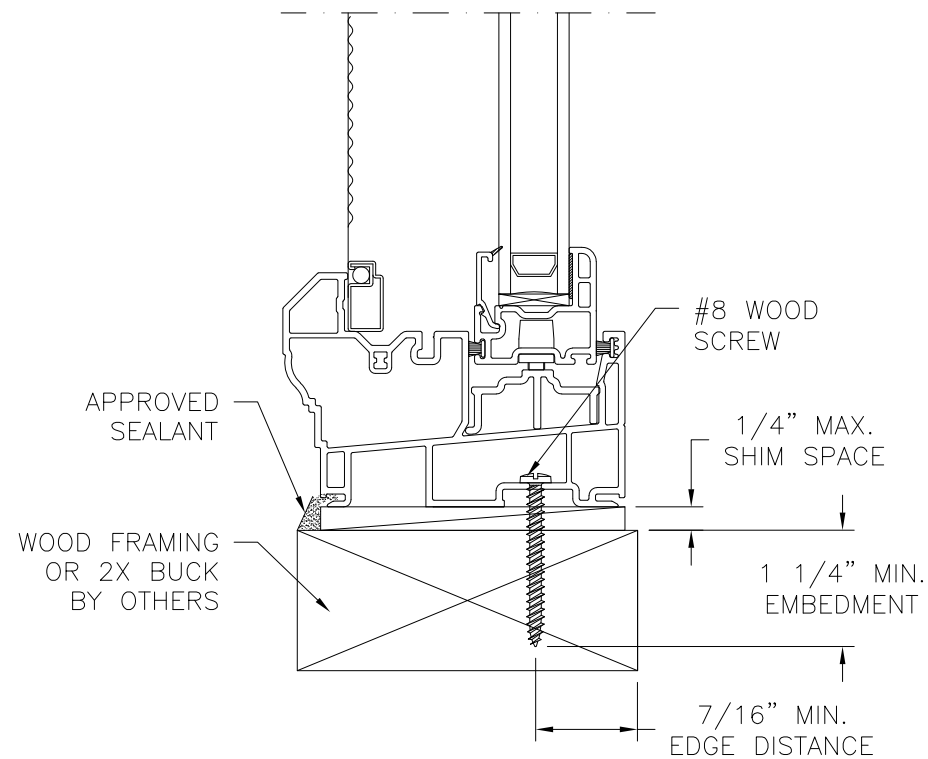
SIGNED: 07/23/2019



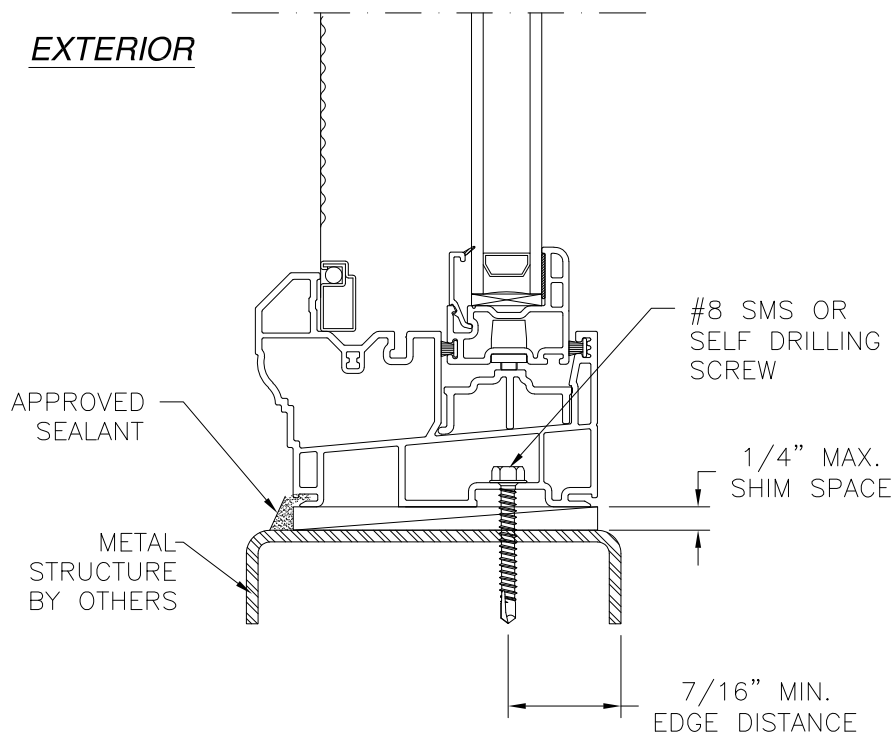
Luis R. Lomas P.E.  
TX No.: 101889



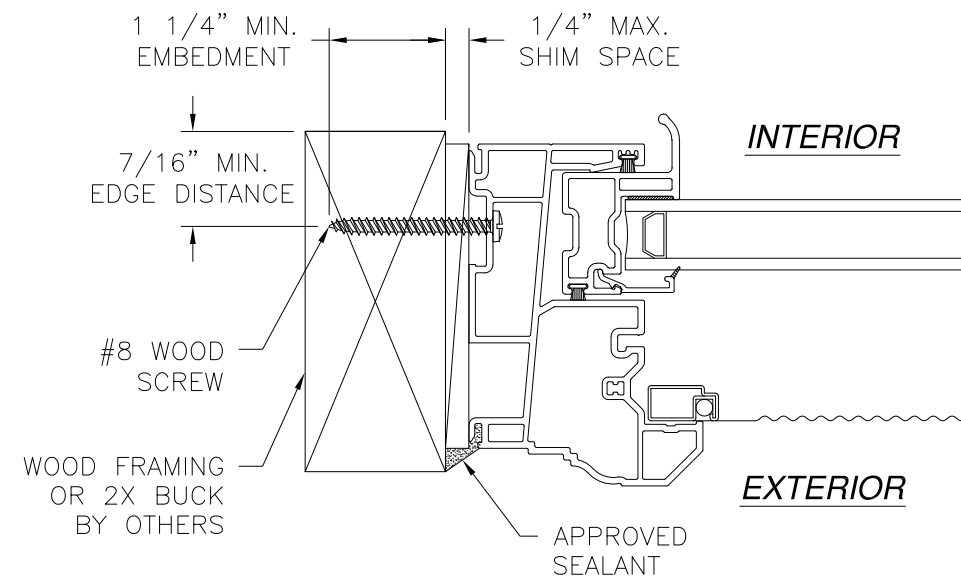
**JAMB INSTALLATION DETAIL**  
METAL STRUCTURE INSTALLATION



**VERTICAL CROSS SECTION**  
WOOD FRAMING OR 2X BUCK INSTALLATION



**VERTICAL CROSS SECTION**  
METAL STRUCTURE INSTALLATION



**JAMB INSTALLATION DETAIL**  
WOOD FRAMING OR 2X BUCK INSTALLATION

SIGNED: 07/23/2019

WINDOW MART  
5760 ALBERT PIKE  
ROYAL, AR 71968

SERIES 7300 VINYL HORIZONTAL SLIDER WINDOW  
72" x 48" NON-IMPACT  
INSTALLATION DETAILS

|                |                     |                 |
|----------------|---------------------|-----------------|
| DRAWN:<br>A.R. | DWG NO.<br>08-02745 | REV<br>A        |
| SCALE<br>NTS   | DATE<br>07/02/19    | SHEET<br>3 OF 6 |

L. ROBERTO LOMAS P.E.  
1432 WOODFORD RD LEWISVILLE, NC 27023  
434-688-0609 rllomas@lrlomaspe.com

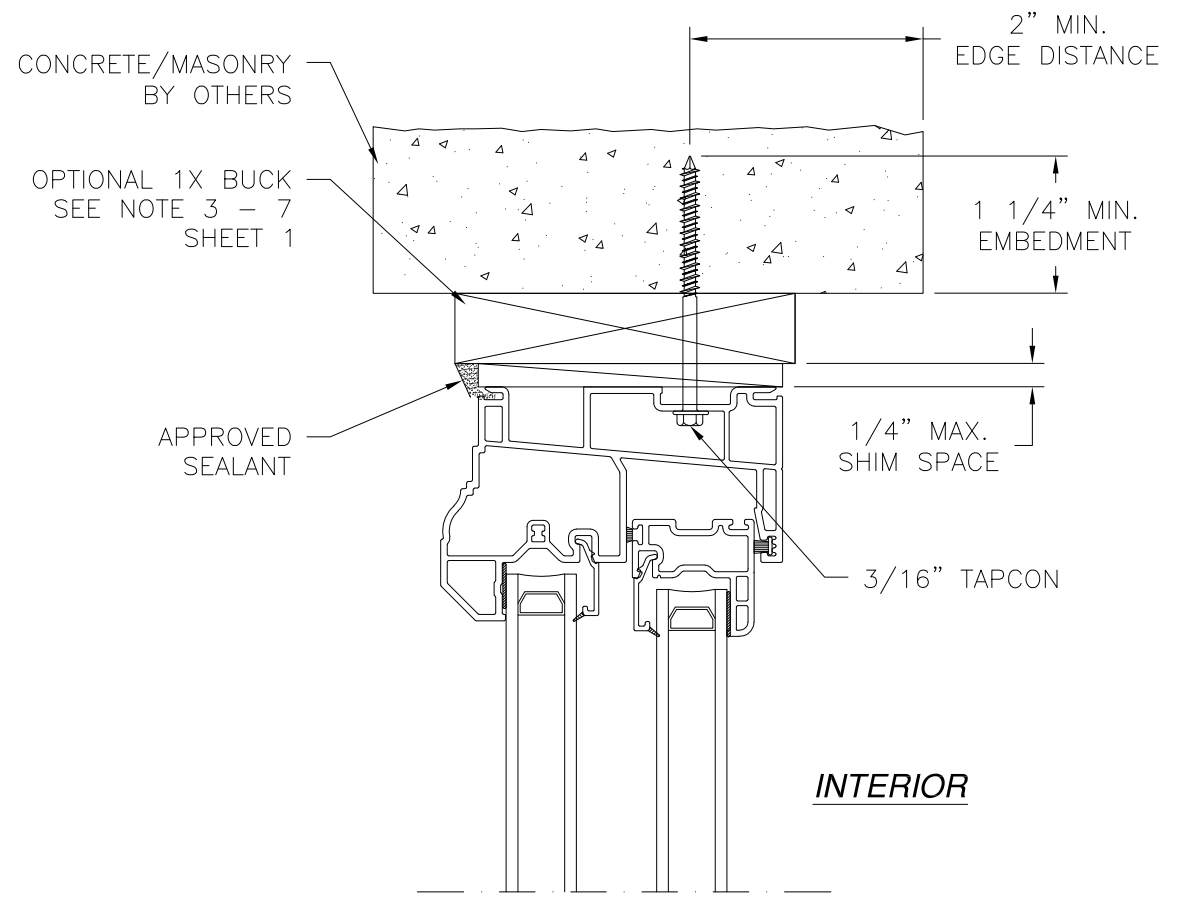


Luis R. Lomas P.E.  
TX No.: 101889

NOTES:  
1. INTERIOR AND EXTERIOR FINISHES, BY OTHERS, NOT SHOWN FOR CLARITY.  
2. PERIMETER AND JOINT SEALANT BY OTHERS TO BE DESIGNED IN ACCORDANCE WITH ASTM E2112

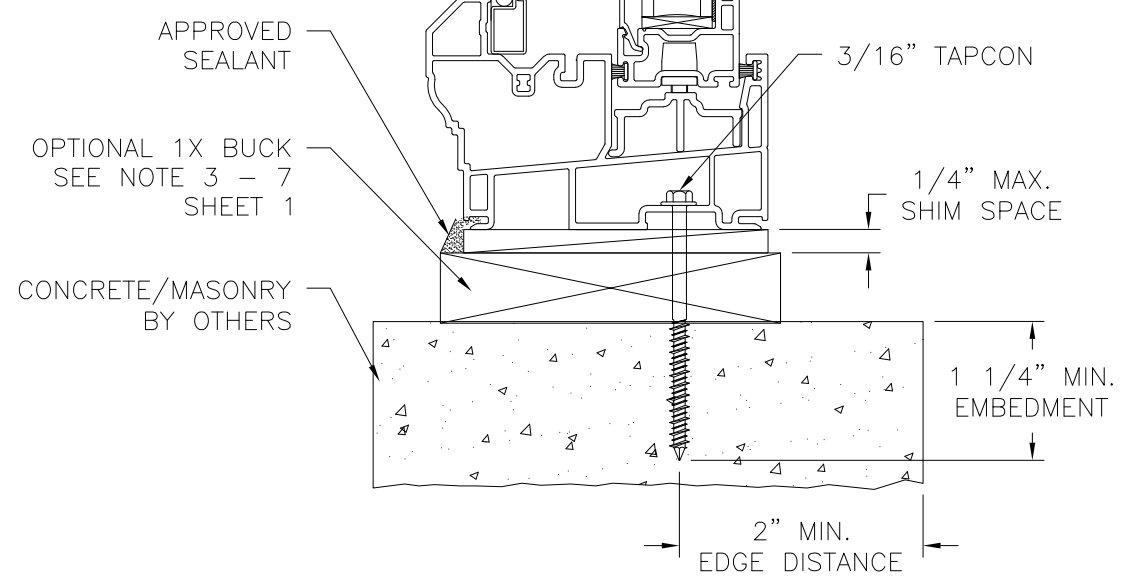
| REVISIONS |                              |          |          |
|-----------|------------------------------|----------|----------|
| REV       | DESCRIPTION                  | DATE     | APPROVED |
| A         | REVISED PER NEW REQUIREMENTS | 07/02/19 | R.L.     |

| REVISIONS |                              |          |          |
|-----------|------------------------------|----------|----------|
| REV       | DESCRIPTION                  | DATE     | APPROVED |
| A         | REVISED PER NEW REQUIREMENTS | 07/02/19 | R.L.     |

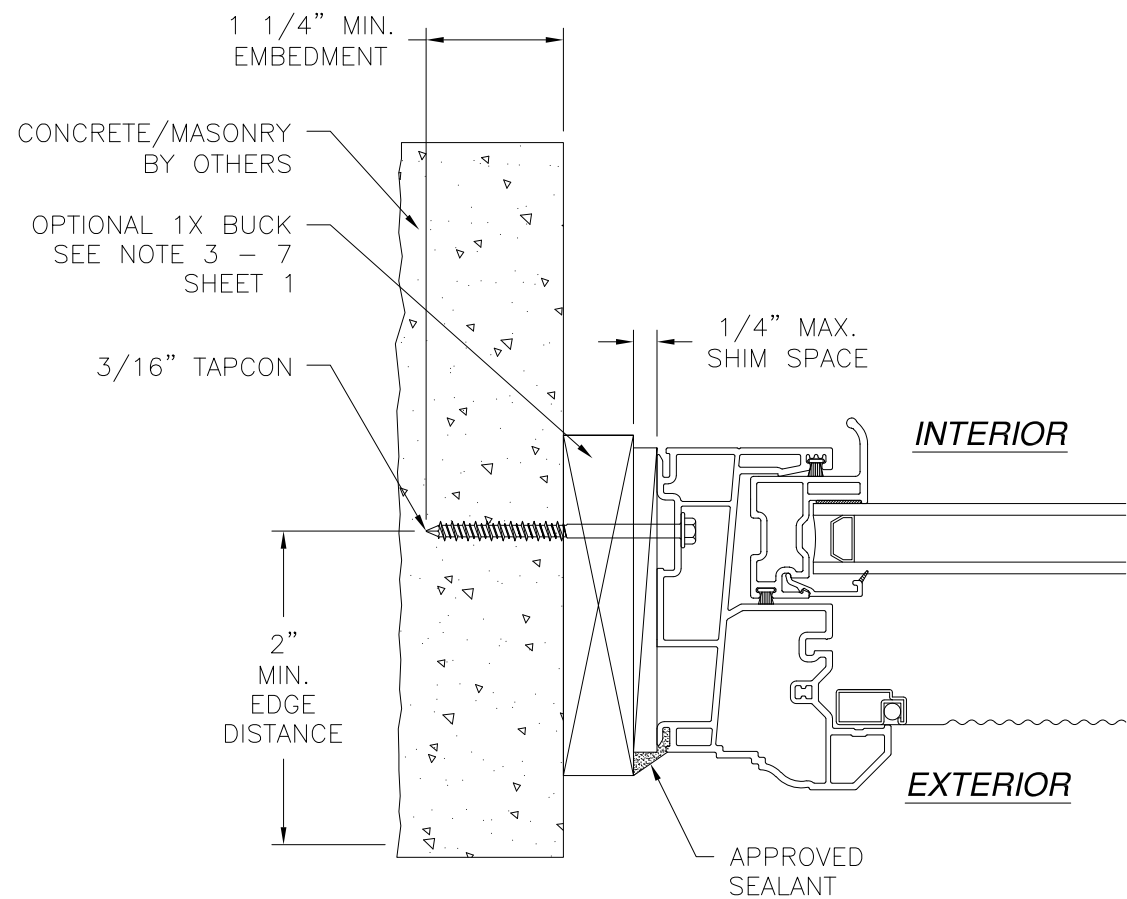


INTERIOR

EXTERIOR



**VERTICAL CROSS SECTION**  
CONCRETE/MASONRY INSTALLATION



**JAMB INSTALLATION DETAIL**  
CONCRETE/MASONRY INSTALLATION

- NOTES:**
1. INTERIOR AND EXTERIOR FINISHES, BY OTHERS, NOT SHOWN FOR CLARITY.
  2. PERIMETER AND JOINT SEALANT BY OTHERS TO BE DESIGNED IN ACCORDANCE WITH ASTM E2112

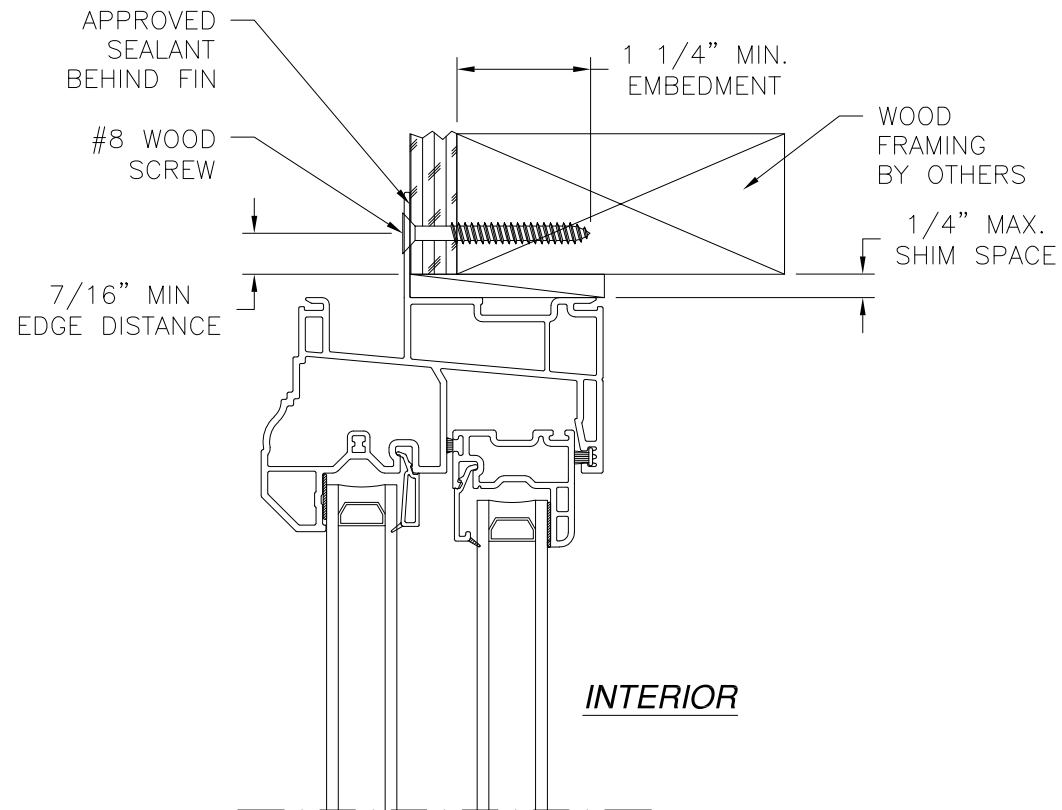
SIGNED: 07/23/2019

|   |                     |              |
|---|---------------------|--------------|
| <b>WINDOW MART</b><br>5760 ALBERT PIKE<br>ROYAL, AR 71968   |                     |              |
| SERIES 7300 VINYL HORIZONTAL SLIDER WINDOW<br>72" x 48" NON-IMPACT<br>INSTALLATION DETAILS          |                     |              |
| DRAWN:<br>A.R.  | DWG NO.<br>08-02745 | REV<br>A     |
| SCALE NTS   | DATE 07/02/19       | SHEET 4 OF 6 |
| L. ROBERTO LOMAS P.E.<br>1432 WOODFORD RD LEWISVILLE, NC 27023<br>434-688-0609 rllomas@rlomaspe.com |                     |              |

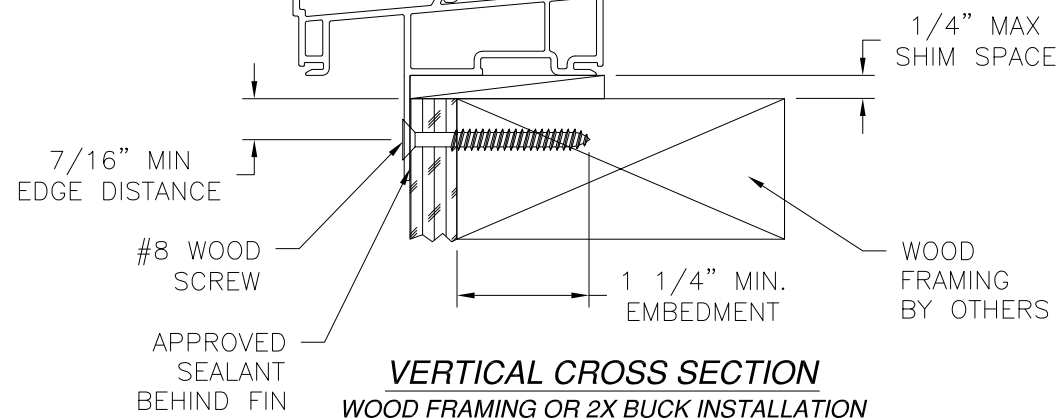


Luis R. Lomas P.E.  
TX No.: 101889

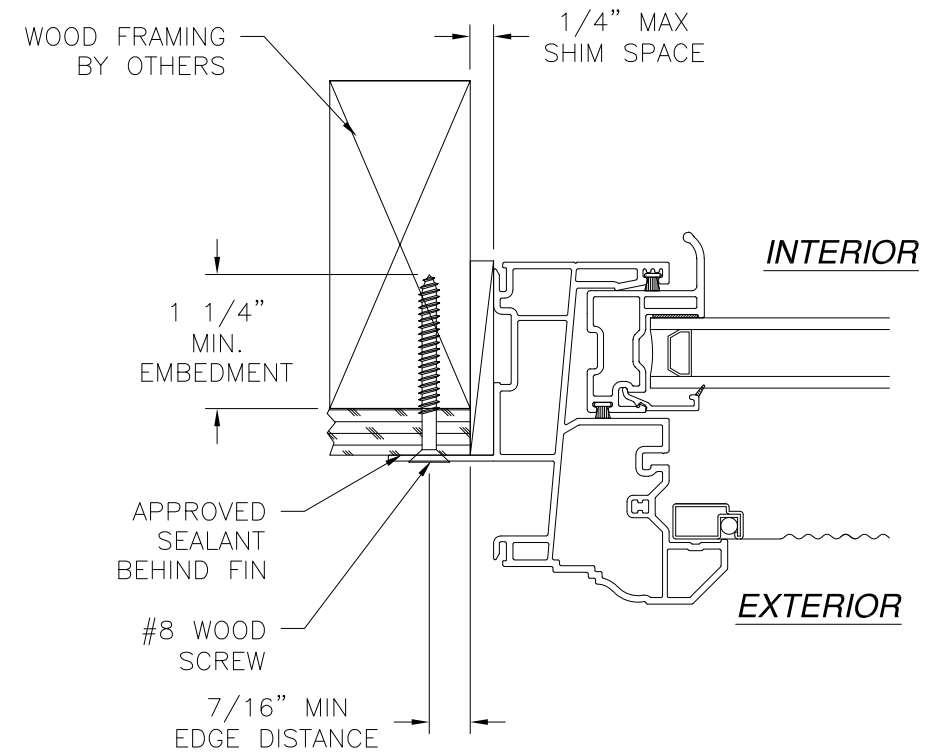
| REVISIONS |                              |          |          |
|-----------|------------------------------|----------|----------|
| REV       | DESCRIPTION                  | DATE     | APPROVED |
| A         | REVISED PER NEW REQUIREMENTS | 07/02/19 | R.L.     |



EXTERIOR



**VERTICAL CROSS SECTION**  
WOOD FRAMING OR 2X BUCK INSTALLATION



**JAMB INSTALLATION DETAIL**  
WOOD FRAMING OR 2X BUCK INSTALLATION

- NOTES:**
1. INTERIOR AND EXTERIOR FINISHES, BY OTHERS, NOT SHOWN FOR CLARITY.
  2. PERIMETER AND JOINT SEALANT BY OTHERS TO BE DESIGNED IN ACCORDANCE WITH ASTM E2112

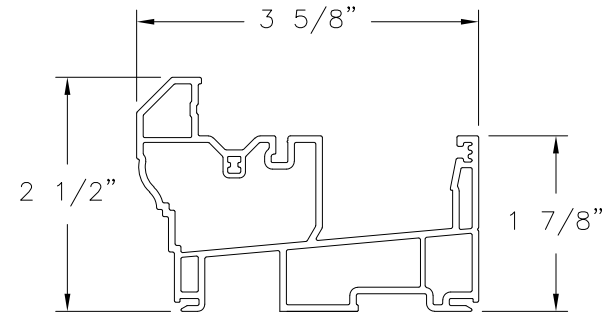
SIGNED: 07/23/2019

|   |                     |                 |
|---|---------------------|-----------------|
| <b>WINDOW MART</b><br>5760 ALBERT PIKE<br>ROYAL, AR 71968   |                     |                 |
| SERIES 7300 VINYL HORIZONTAL SLIDER WINDOW<br>72" x 48" NON-IMPACT<br>FIN INSTALLATION DETAILS      |                     |                 |
| DRAWN:<br>A.R.  | DWG NO.<br>08-02745 | REV<br>A        |
| SCALE<br>NTS  | DATE<br>07/02/19    | SHEET<br>5 OF 6 |
| L. ROBERTO LOMAS P.E.<br>1432 WOODFORD RD LEWISVILLE, NC 27023<br>434-688-0609 rllomas@rlomaspe.com |                     |                 |

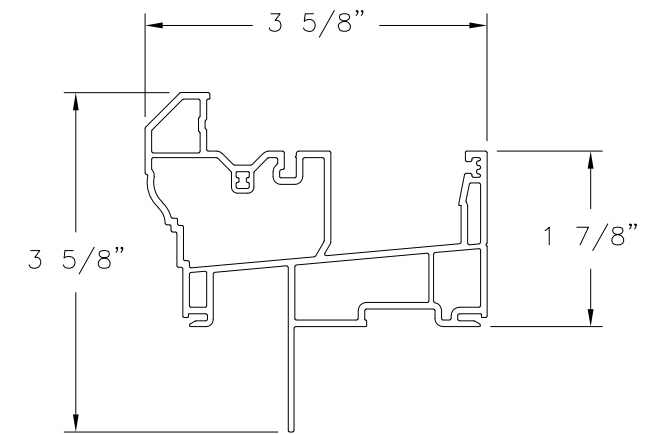


Luis R. Lomas P.E.  
TX No.: 101889

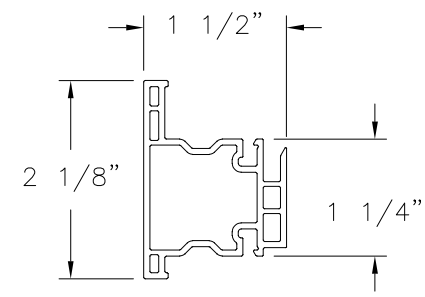
| REVISIONS |                              |          |          |
|-----------|------------------------------|----------|----------|
| REV       | DESCRIPTION                  | DATE     | APPROVED |
| A         | REVISED PER NEW REQUIREMENTS | 07/02/19 | R.L.     |



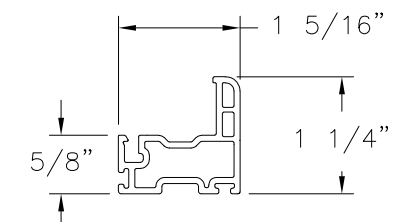
**HEAD FRAME**  
EXTRUDED PVC (10008661)



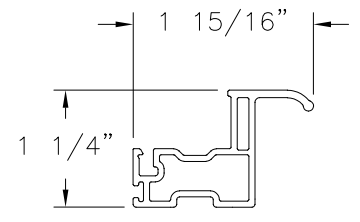
**HEAD FRAME  
FIN INSTALLATION**  
EXTRUDED PVC (10008661)



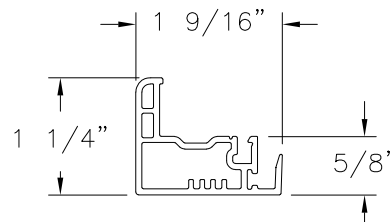
**MEETING RAIL**  
EXTRUDED PVC (10008511)



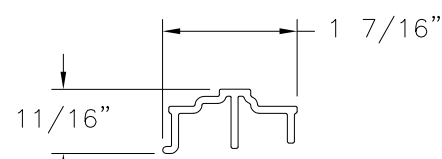
**RAIL**  
EXTRUDED PVC (10008842)



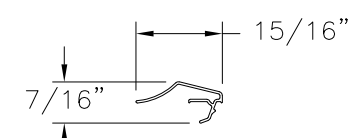
**PULL STILE**  
EXTRUDED PVC (10008882)



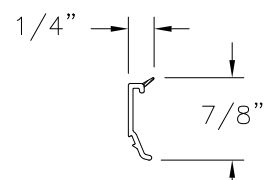
**LOCK STILE**  
EXTRUDED PVC (10008845)



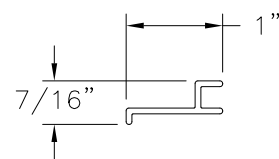
**SLIDER TRACK INSERT**  
EXTRUDED PVC (10008466)



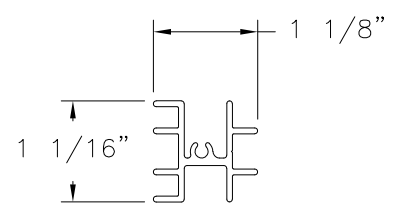
**SCREEN RETAINER**  
EXTRUDED PVC (10005258)



**GLAZING BEAD**  
EXTRUDED PVC (10008127)



**SASH REINFORCEMENT**  
EXTRUDED ALUMINUM (A6202)



**MEETING RAIL  
REINFORCEMENT**  
EXTRUDED ALUMINUM (A6189)

|  |                     |              |
|--|---------------------|--------------|
| <b>WINDOW MART</b><br>5760 ALBERT PIKE<br>ROYAL, AR 71968  |                     |              |
| SERIES 7300 VINYL HORIZONTAL SLIDER WINDOW<br>72" x 48" NON-IMPACT<br>COMPONENTS                     |                     |              |
| DRAWN:<br>A.R.   | DWG NO.<br>08-02745 | REV<br>A     |
| SCALE NTS  | DATE 07/02/19       | SHEET 6 OF 6 |
| L. ROBERTO LOMAS P.E.<br>1432 WOODFORD RD LEWISVILLE, NC 27023<br>434-688-0609 rllomas@lrlomaspe.com |                     |              |

SIGNED: 07/23/2019



Luis R. Lomas P.E.  
TX No.: 101889