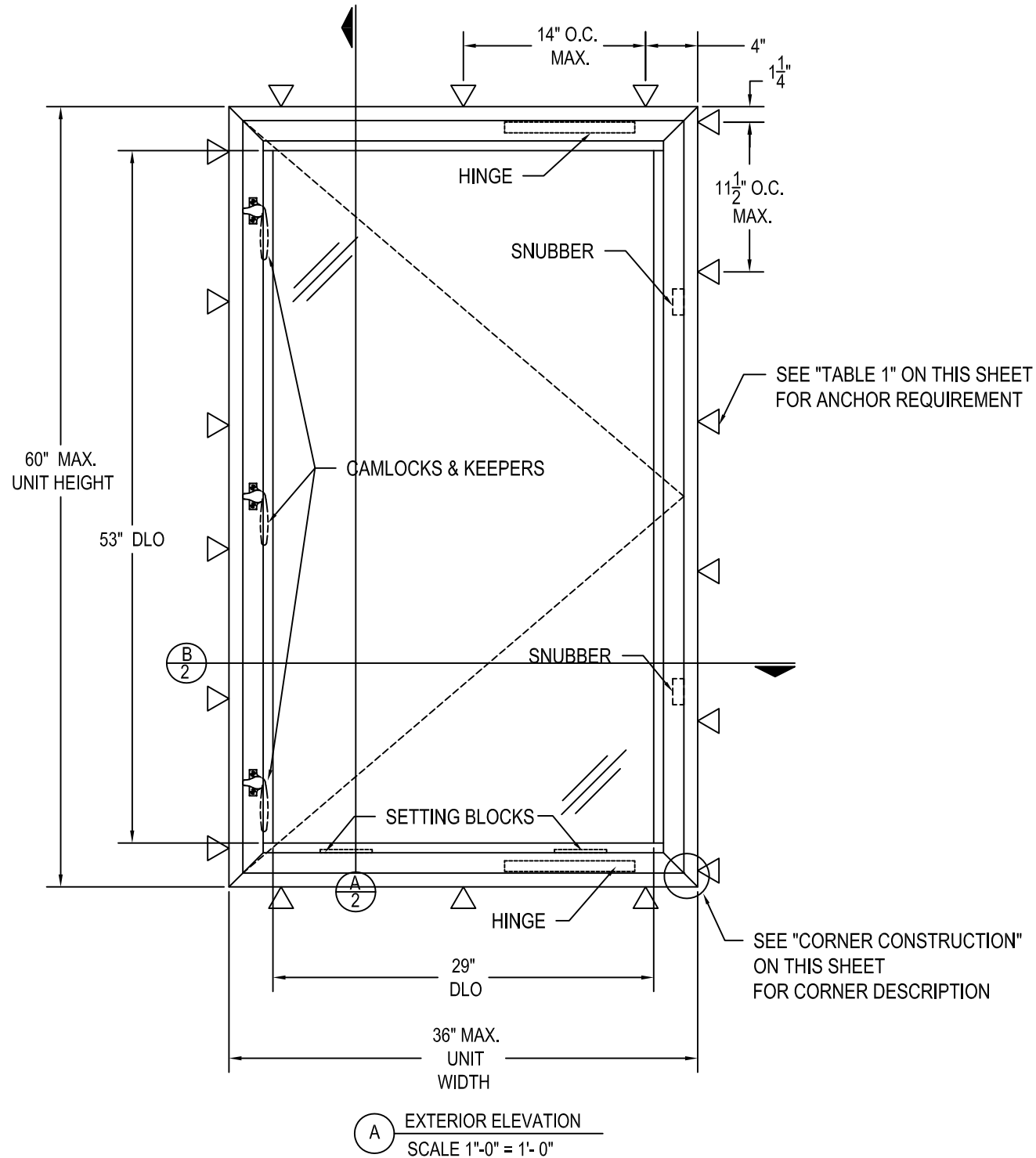


NX3200 - INSWING CASEMENT WINDOW (NON-IMPACT)



DESIGN PRESSURE = +80/- 80 PSF

HARDWARE TYPES AND LOCATIONS

CAMLOCK & KEEPER (ITEM #18 & 19), TWO @ 10" FROM EACH END AND ONE @ MID-SPAN OF LOCK STILE
 HINGES (ITEM #16), ONE EACH @ HEAD AND SILL
 SNUBBERS (ITEM #15), TWO @ 15" FROM EACH END OF JAMB / HINGE STILE
 SETTING BLOCKS (ITEM #12), TWO @ 1/4 POINT FROM EACH END FOR SILL

GENERAL NOTES

1. THIS PRODUCT HAS BEEN TESTED TO AAMA/WDMA/CSA 101/I.S.2/A440, AND MEETS THE REQUIREMENTS OF THE 2018 INTERNATIONAL BUILDING CODE AND INTERNATIONAL RESIDENTIAL CODE.
2. THIS PRODUCT, FABRICATED, GLAZED, AND ANCHORED AS DETAILED IN THIS DRAWING, IS NON-IMPACT AND REQUIRES THE USE OF SHUTTERS IN WINDBORNE DEBRIS REGIONS.
3. ALLOWABLE CONFIGURATION: X (SINGLE OPERABLE SASH)
4. THE DESIGN PRESSURE RATINGS IN THIS DRAWING ARE AS LIMITED BY ASTM E-1300-04 GLASS TABLES, AND TESTED PRESSURES.
5. DISSIMILAR MATERIALS THAT COME INTO CONTACT, INCLUDING BUT NOT LIMITED TO PRESSURE TREATED WOOD BUCKS, SHALL BE COATED OR OTHERWISE PROTECTED PER IBC/IRC REQUIREMENTS TO PREVENT GALVANIC REACTIONS.
6. SEALING AND FLASHING STRATEGIES FOR OVERALL WATER INFILTRATION RESISTANCE SHALL BE THE RESPONSIBILITY OF OTHERS.
7. THE 4/3 ALLOWABLE STRESS INCREASE HAS NOT BEEN USED IN THE ANCHOR ANALYSIS FOR THIS SYSTEM. THE 1.6 Cd FACTOR WAS USED IN THE ANALYSIS OF WOOD SUBSTRATE.
8. STRUCTURAL INTEGRITY OF SUBSTRATE MATERIALS TO RECEIVE THE LOADS FROM THIS PRODUCT, AND INSTALLATION OF WOOD BUCKS TO THE SUBSTRATE, TO BE ENGINEERED BY OTHERS OR AS APPROVED BY THE AUTHORITY HAVING JURISDICTION.
9. THIS PRODUCT SHALL BE INSTALLED USING ONE OF THE APPROVED FASTENERS IN TABLE 1 APPROPRIATE FOR THE SUBSTRATE TYPE, AT THE MINIMUM SPACING SHOWN IN THE ELEVATION VIEW ON THIS PAGE.
10. MINIMUM ANCHOR EMBEDMENTS LISTED IN TABLE 1 SHALL BE BEYOND WALL DRESSING OR STUCCO AND FULLY INTO SUBSTRATE.
11. SUBSTRATES SHALL MEET THE MINIMUM STRENGTH REQUIREMENTS AS SHOWN IN TABLE 1. CONCRETE OR MASONRY SUBSTRATES SHALL NOT BE CRACKED. FOR INSTALLATION TO METAL SUBSTRATES, ANCHORS SHALL BE LONG ENOUGH TO BE FULLY THREADED THROUGH THE METAL THICKNESS WITH AN ADDITIONAL 3/16" MIN. OF THREADS BEYOND.

TABLE 1: INSTALLATION ANCHOR REQUIREMENTS TABLE

ID	SUBSTRATE TYPE	ANCHOR TYPE	MIN. EMBED	MIN. EDGE DIST.
A	CONCRETE (2.0 KSI MIN)	3/16" ITW TAPCON	1"	1 1/8"
B	HOLLOW OR GROUT-FILLED CMU (117 PCF MIN.)	3/16" ITW TAPCON	1"	2"
C	CONCRETE (2.85 KSI MIN.)	3/16" ELCO ULTRACON	1"	1"
D	HOLLOW OR GROUT-FILLED CMU (ASTM C90)	3/16" ELCO ULTRACON	1-1/4"	2 1/2"
E	2X MIN. SPRUCE-PINE-FIR WOOD (G=0.42)	3/16" ELCO ULTRACON	1-3/8"	1"
F	2X MIN. SPRUCE-PINE-FIR WOOD (G=0.42)	#10 WOOD SCREW	1-3/8"	1"
G	16 GAUGE (0.060") MIN. STEEL STUD 33KSI YIELD MIN.	#10-16 ITW TEKS SELF-DRILLING SCREW	SEE NOTE 11	1/2"
H	1/8" ALUM. 6063-T5 MIN. OR 1/8" STEEL 36 KSI MIN.	#10 GRADE 5 SELF-TAPPING/ DRILLING SCREW	SEE NOTE 11	1/2"

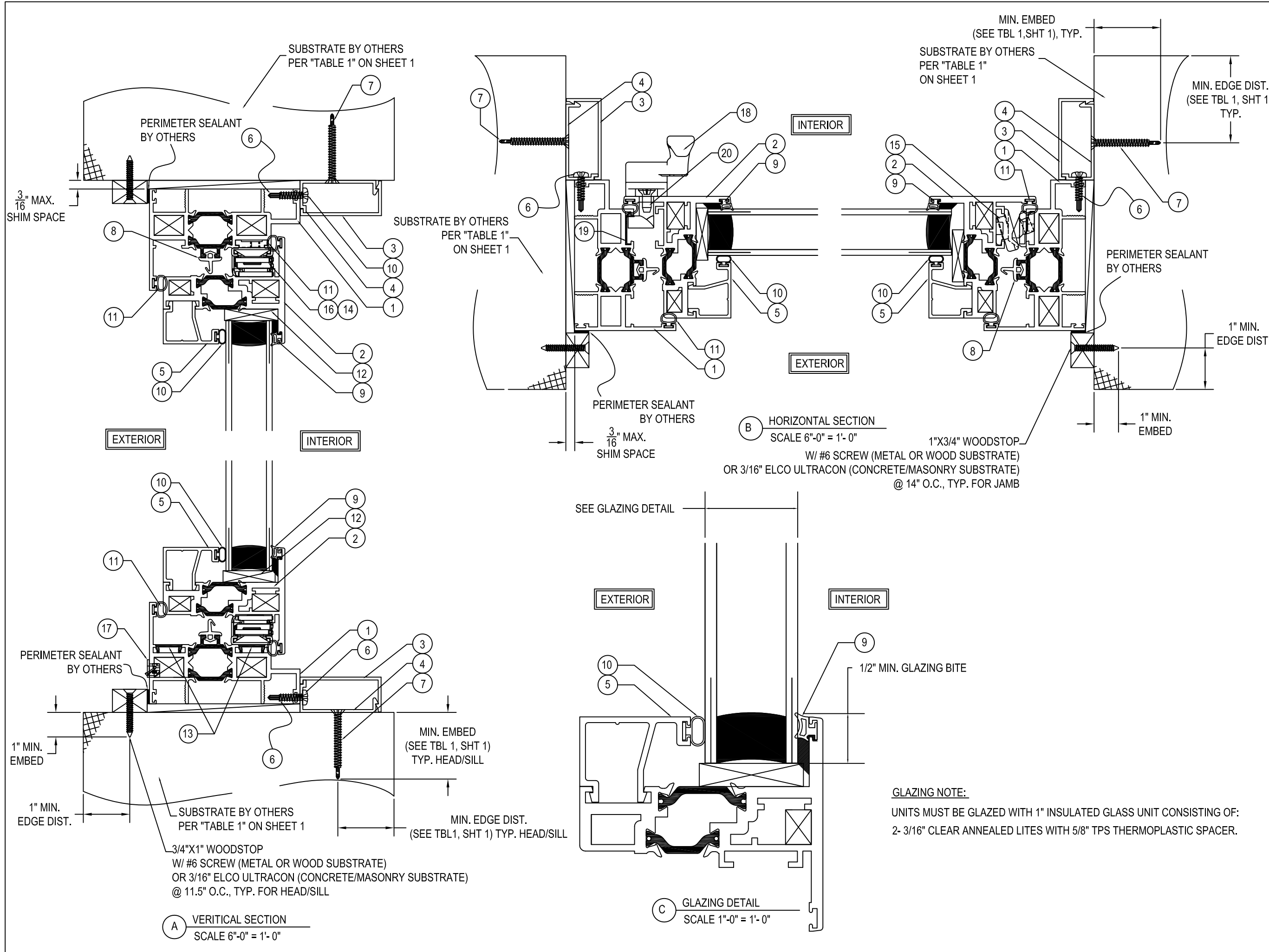
INSTALL ONE ANCHOR PER LOCATION INDICATED IN ELEVATION VIEW

CORNER CONSTRUCTION:

FRAME: VERTICAL AND HORIZONTAL MEMBERS ARE MITERED AND JOINED TOGETHER WITH CORNER KEYS, CRIMPED AND SEALED WITH SEALANT.

VENT: VERTICAL AND HORIZONTAL MEMBERS ARE MITERED AND JOINED TOGETHER WITH CORNER KEY, CRIMPED AND SEALED WITH SEALANT.

REV.	DATE	DESCRIPTION	BY
E.C. NO.	xxxx-xx	XX/XX/XX	
3/3/2022			
LUCAS A. TURNER, TX P.E. #115094 2428 OLD NATCHEZ TRACE TRAIL CAMDEN, TN 38320 PH. 941-380-1574			
TRACO A DIVISION OF KAWNEER 71 PROGRESS AVENUE CRANBERRY TOWNSHIP, PA 16066 PHONE (724) 776-7000 FAX (724) 776-7114	NX-3200 - INSWING CASEMENT WINDOW NON-IMPACT		SCALE: NONE
	DRAWN BY: YSE DRWG. NO.: I-NX3200-001	DATE: 05/15/12	SHEET: 1 OF 03

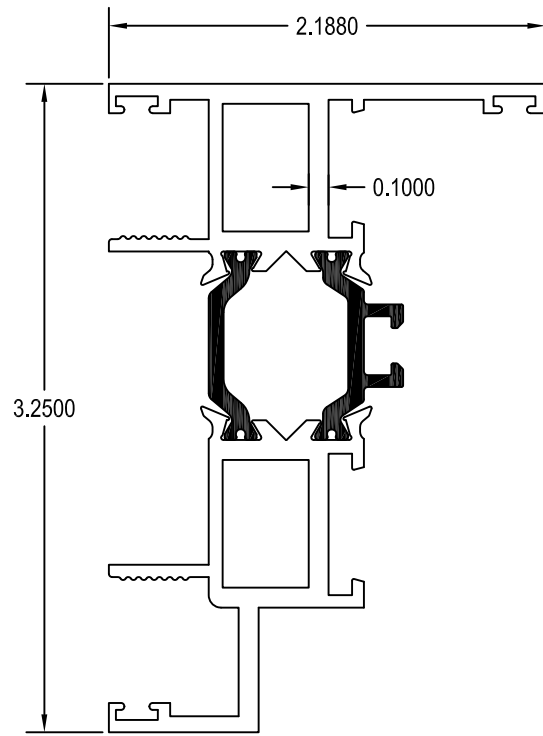


REV.	DATE	DESCRIPTION	BY
E.C. NO.	xxxx-xx	XX/XX/XX	
3/3/2022			
LUCAS A. TURNER, TX P.E. #115094 2428 OLD NATCHEZ TRACE TRAIL CAMDEN, TN 38320 PH. 941-380-1574			
TRACO A DIVISION OF KAWNEER		71 PROGRESS AVENUE CRANBURY TOWNSHIP, PA 16066 PHONE (724) 776-7000 FAX (724) 776-7114	
DRAWN BY YSE		DATE 05/15/12	
DRWG. NO. I-NX3200-002		SCALE: NONE	
SHEET 2 OF 03		I-NX3200-001	

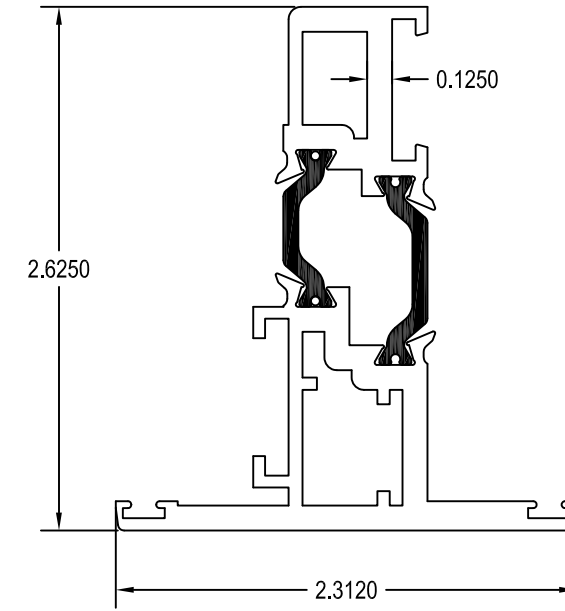
GLAZING NOTE:
 UNITS MUST BE GLAZED WITH 1" INSULATED GLASS UNIT CONSISTING OF:
 2- 3/16" CLEAR ANNEALED LITES WITH 5/8" TPS THERMOPLASTIC SPACER.

MATERIAL PARTS LIST

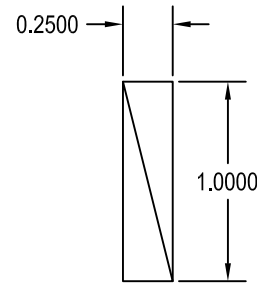
ITEM#	PART #	DESCRIPTION	MATERIAL
EXTRUSIONS			
1	IF-1107	PROJECT IN MASTER FRAME	6063-T6 ALUMINUM
2	IF-1109	PROJECT IN VENT RAIL	6063-T6 ALUMINUM
3	S-1542	#30 TRIM	6063-T6 ALUMINUM
4	S-1543	#30 CLIP	6063-T6 ALUMINUM
5	S-4946	GLAZING BEAD - VENT	6063-T6 ALUMINUM
HARDWARE, GASKET AND MISC. PARTS			
6	15-0111	#8-18 X 3/4" PPH "TEK" SS	410 STAINLESS STEEL
7	-	ANCHOR (SEE TABLE 1 ON SHEET 1)	-
8	20-4250	NX-3000 CENTER GASKET	SANTOPRENE
9	20-4246	SILICONE GLAZING GASKET	SILICONE
10	20-7051	0.187 X 0.375 FOAM FILLED BULB	FOAM FILLED BULB
11	20-4258	FRAME / VENT GASKET	60 SHORE - D - PVC 60 DUROMETER BLACK ALCRYN
12	20-6079	1/4" X 1" X 4" SETTING BLOCK W/ ADHESIVE BACKING	SILICONE
13	20-0730-16	EURO GROOVE FILLER	PVC
14	30-3689	SHIM FOR 11" 4-BAR HINGE	18-8 STAINLESS STEEL
15	30-3709	SNUBBER KIT	CAST ZINC
16	30-3640	11" 4-BAR HINGE PROJECTED	18-8 STAINLESS STEEL
17	30-3886	WEEP COVER	NYLON 69
18	30-3663	PROJECT IN CAM HANDLE - LEFT	WHITE BRONZE
19	30-3680	PROJECT IN KEEPER	STAINLESS STEEL
20	15-0066	#10-24 X 1/2" PFH "MS" 18-8 SS	18-8 STAINLESS STEEL



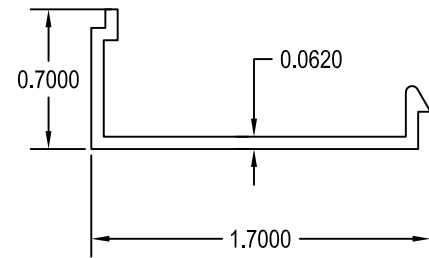
① PROJECT IN MASTER FRAME
SCALE 1:1



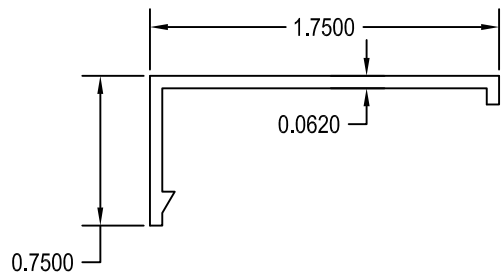
② PROJECT IN VENT RAIL
SCALE 1:1



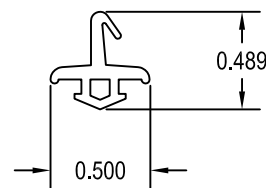
③ #30 TRIM
SCALE 1:1



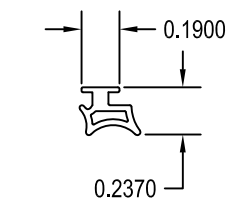
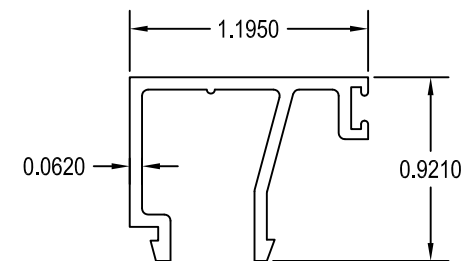
④ #30 CLIP
SCALE 1:1



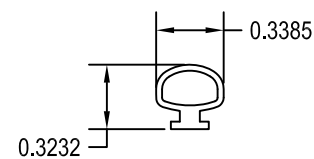
⑤ GLAZING BEAD - VENT
SCALE 1:1



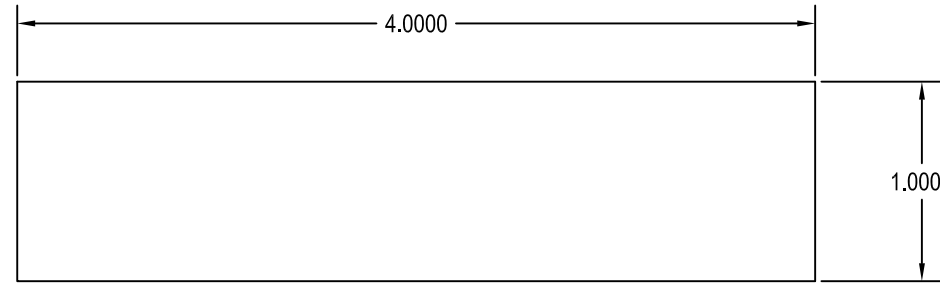
⑧ NX-3000 CENTER GASKET
SCALE 1:1



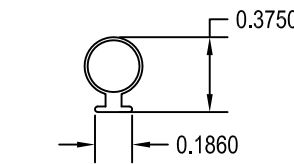
⑨ SILICONE GLAZING GASKET
SCALE 1:1



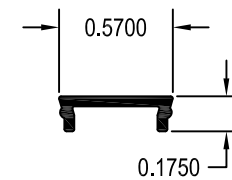
⑪ FRAME / VENT GASKET
SCALE 1:1



⑫ 1/4" X 1" X 4" SETTING BLOCK W/ ADHESIVE BACKING
SCALE 1:1



⑩ 0.187 X 0.375 FOAM FILLED BULB
SCALE 1:1



⑬ EURO GROOVE FILLER
SCALE 1:1

REV.	DATE	DESCRIPTION	BY
E.C. NO.	xxxx-xx	XX/XX/XX	
3/3/2022			
LUCAS A. TURNER, TX P.E. #115094 2428 OLD NATCHEZ TRACE TRAIL CAMDEN, TN 38320 PH. 941-380-1574			
		71 PROGRESS AVENUE CRANBURY TOWNSHIP, PA 16066 PHONE (724) 776-7000 FAX (724) 776-7114	
DRAWN BY YSE		DATE 05/15/12	
DRWG. NO. I-NX3200-003			
SHEET 3 OF 03		I-NX3200-001	
NX-3100 - INSWING CASEMENT WINDOW NON-IMPACT		SCALE: NONE	