

**GENERAL NOTES**

1. THE PRODUCT SHOWN HEREIN IS DESIGNED AND MANUFACTURED TO COMPLY WITH THE REQUIREMENTS OF THE 2018 INTERNATIONAL BUILDING CODE AND 2018 INTERNATIONAL RESIDENTIAL CODE.
2. THIS DOCUMENT ADDRESSES ONLY PRODUCT ANCHORAGE TO ACHIEVE THE INDICATED DESIGN PRESSURES AT THE INDICATED SIZES, IN THE CONFIGURATION SHOWN IN THE ELEVATIONS. INSTALL PRODUCTS WITH MAXIMUM SHIM GAP, MINIMUM EDGE DISTANCE AND EMBEDMENT, AND WITH FASTENER TYPE AS SHOWN IN THE DETAILS AND AS INDICATED IN TABLE 1. FOR FULL PRODUCT CONSTRUCTION DETAILS SEE INTERTEK TEST REPORTS J4102/3.02-501-44 & J4093.02-501-44.
3. THIS PRODUCT AS SHOWN IN THIS DRAWING IS NON-IMPACT RESISTANT AND REQUIRES THE USE OF IMPACT PROTECTIVE DEVICES (SHUTTERS) IN WINDBORNE DEBRIS REGIONS.
4. INSTALLED GLAZING SHALL MEET ASTM E-1300 FOR THE APPLICABLE DESIGN PRESSURES AND WINDOW SIZE.
5. THE 4/3 ALLOWABLE STRESS INCREASE FACTOR (SHORT-TERM INCREASE FACTOR) HAS NOT BEEN USED IN THE ANCHOR ANALYSIS FOR THIS SYSTEM. THE 1.6 Cd FACTOR WAS USED IN THE ANALYSIS OF ANCHORAGE INTO WOOD SUBSTRATE.
6. THE OPENING SUBSTRATE MATERIALS (FRAMING, MASONRY, BUCKS) AND ATTACHMENT OF BUCKS TO THE SUBSTRATE ARE BY OTHERS AND SHALL BE VERIFIED BY THE ARCHITECT OR ENGINEER OF RECORD OR AS APPROVED BY THE AUTHORITY HAVING JURISDICTION (AHJ). BUCKING, OPENINGS, & BUCKING FASTENERS MUST BE PROPERLY DESIGNED & INSTALLED BY OTHERS IN ACCORDANCE WITH THE FBC TO TRANSFER SUPERIMPOSED LOADS TO THE STRUCTURE. WITH MASONRY OPENINGS, WOOD BUCKS ARE OPTIONAL.
7. DISSIMILAR MATERIALS THAT COME INTO CONTACT SHALL BE COATED OR OTHERWISE PROTECTED TO PREVENT GALVANIC REACTIONS. WOOD BUCKS, IF USED, SHALL BE PRESSURE TREATED, WITH EITHER A TREATMENT OR COATING COMPATIBLE WITH THIS PRODUCT.
8. ANCHORAGE NOTES: ALL ANCHORS USED SHALL BE OF A MATERIAL OR HAVE A COATING COMPATIBLE WITH THE PRESSURE TREATED WOOD BUCKS AND ALL OTHER WINDOW MATERIALS. INSTALL ONE ANCHOR AT EACH LOCATION SHOWN IN THE ELEVATION. INSTALL SHIMS AT EACH ANCHOR LOCATION WHERE A GAP OF 1/16" OR GREATER EXISTS BETWEEN PRODUCT FRAME AND SUBSTRATE. SHIMS SHALL BE LOAD-BEARING (PLASTIC OR METALLIC) AND CAPABLE OF TRANSFERRING LOADS TO SUBSTRATE. SPECIFIED ANCHOR EMBEDMENT TO SUBSTRATE SHALL BE BEYOND WALL FINISH OR STUCCO. FOR MASONRY WITH WOOD BUCKS LESS THAN 1-1/2" THICK EMBEDMENT SHALL BE BEYOND WOOD BUCKS AND INTO MASONRY. WOOD BUCKS 1-1/2" THICK OR GREATER SHALL HAVE EMBEDMENT INTO THE WOOD BUCKS.
9. ALL HARDWARE & FASTENERS SHALL BE IN ACCORDANCE WITH THESE DRAWINGS, OR AS APPROVED, SIGNED, AND SEALED BY A TEXAS-REGISTERED PROFESSIONAL ENGINEER ON A SITE-SPECIFIC BASIS.
10. SEALING AND FLASHING STRATEGIES FOR OVERALL WATER INFILTRATION RESISTANCE OF THE INSTALLED PRODUCT SHALL BE THE RESPONSIBILITY OF OTHERS AND ARE NOT ADDRESSED BY THIS DOCUMENT.

# CRUSADER ELITE HORIZONTAL SLIDING WINDOW, NON-IMPACT

DESIGN PRESSURE CHART

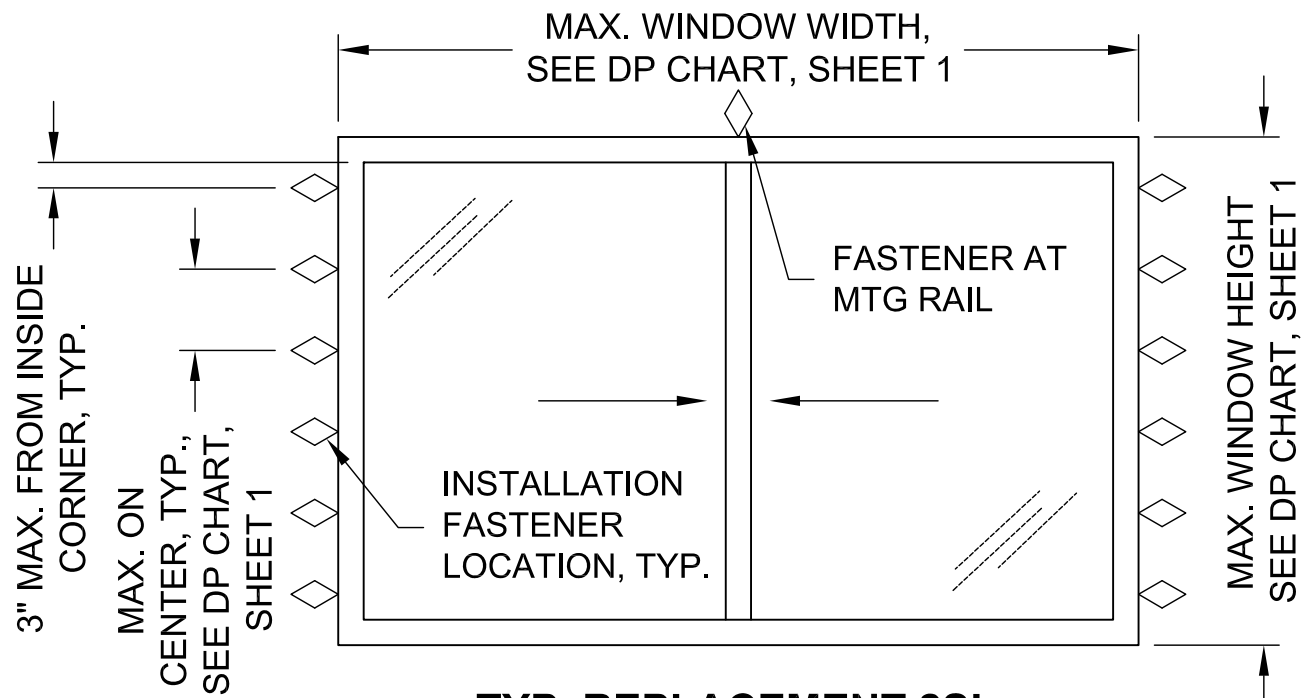
| FRAME TYPE  | MAX. SIZE AND CONFIGURATION   | DESIGN PRESSURE RATING | MAXIMUM REPLACEMENT JAMB ANCHOR SPACING |
|-------------|-------------------------------|------------------------|---|
| NEW CONSTR. | 71" W X 56" H XX 2SL          | +25/-25 PSF            | -                                       |
| REPLACEMENT | 71" W X 56" H XX 2SL          | +35/-35 PSF            | 12-1/4"                                 |
| NEW CONSTR. | 63" W X 44" H XX 2SL          | +40/-40 PSF            | -                                       |
| REPLACEMENT | 63" W X 44" H XX 2SL          | +45/-50 PSF            | 9-5/8"                                  |
| REPLACEMENT | 109" W X 66" H XOX EQUAL LITE | +25/-25 PSF            | 11-1/8"                                 |
| REPLACEMENT | 93" W X 66" H XOX EQUAL LITE  | +25/-25 PSF            | 13-1/8"                                 |
| NEW CONSTR. | 93" W X 44" H XOX EQUAL LITE  | +35/-35 PSF            | -                                       |
| REPLACEMENT | 93" W X 44" H XOX EQUAL LITE  | +40/-40 PSF            | 8-1/8"                                  |
| REPLACEMENT | 93" W X 66" H XOX 1/4-1/2-1/4 | +25/-25 PSF            | 13-1/8"                                 |
| NEW CONSTR. | 93" W X 44" H XOX 1/4-1/2-1/4 | +35/-35 PSF            | -                                       |
| REPLACEMENT | 93" W X 44" H XOX 1/4-1/2-1/4 | +40/-40 PSF            | 8-1/8"                                  |

|   |                          |
|---|--------------------------|
| <b>NORTHEAST BUILDING PRODUCTS</b>  |                          |
| 4280 Aramingo Ave., Philadelphia, PA 19124<br>Ph. (215) 535-7110 www.camelotwindows.com |                          |
| SHEET DESCRIPTION:<br>NOTES, ELEVATION  | DATE DRAWN:<br>2/10/2020 |
| SCALE: NTS  | REV: 0                   |
| DRAWING: TDI-ELITE-HS-NI  | SHEET: 1 OF 4            |

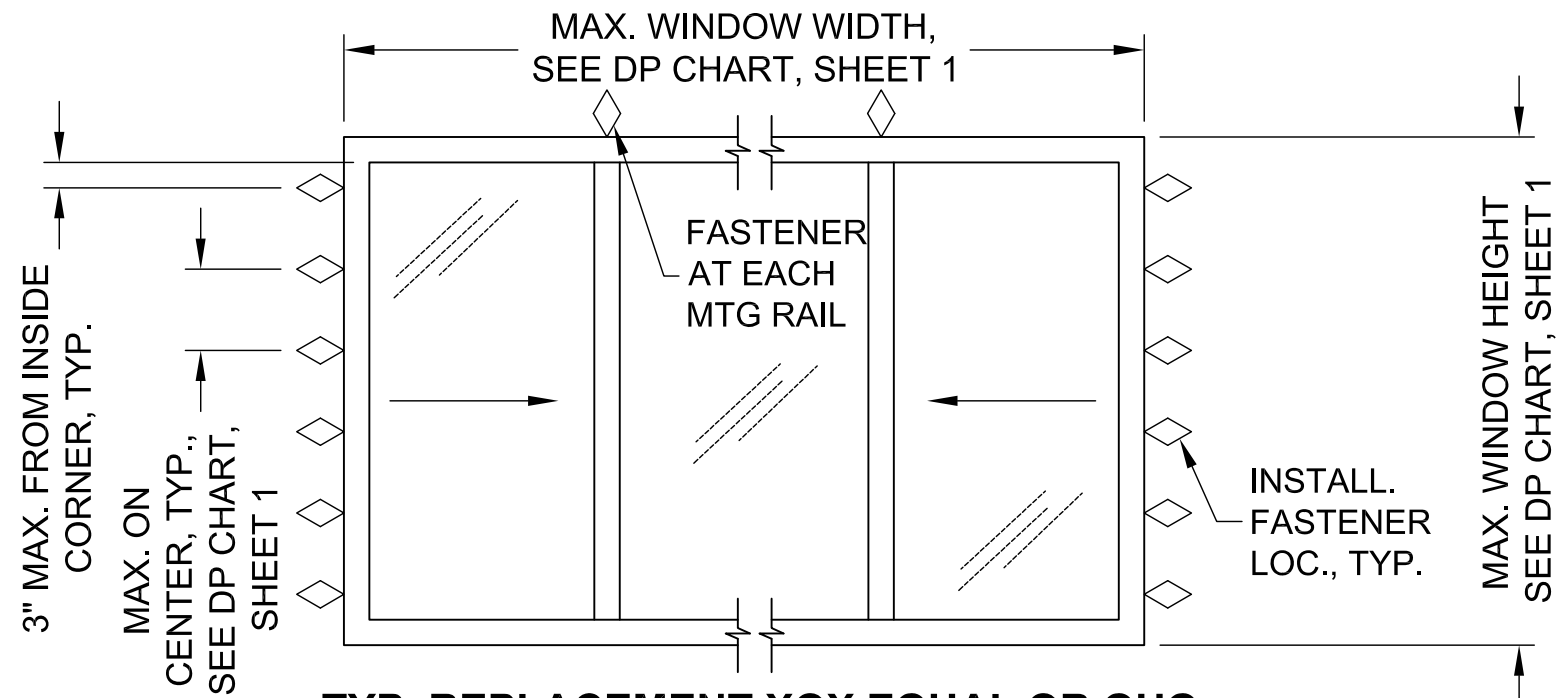


11/12/2020  
 Lucas A. Turner, P.E.  
 TX PE #115094  
 2428 Old Natchez Trc Trl  
 Camden, TN 38320  
 Ph. 941-380-1574

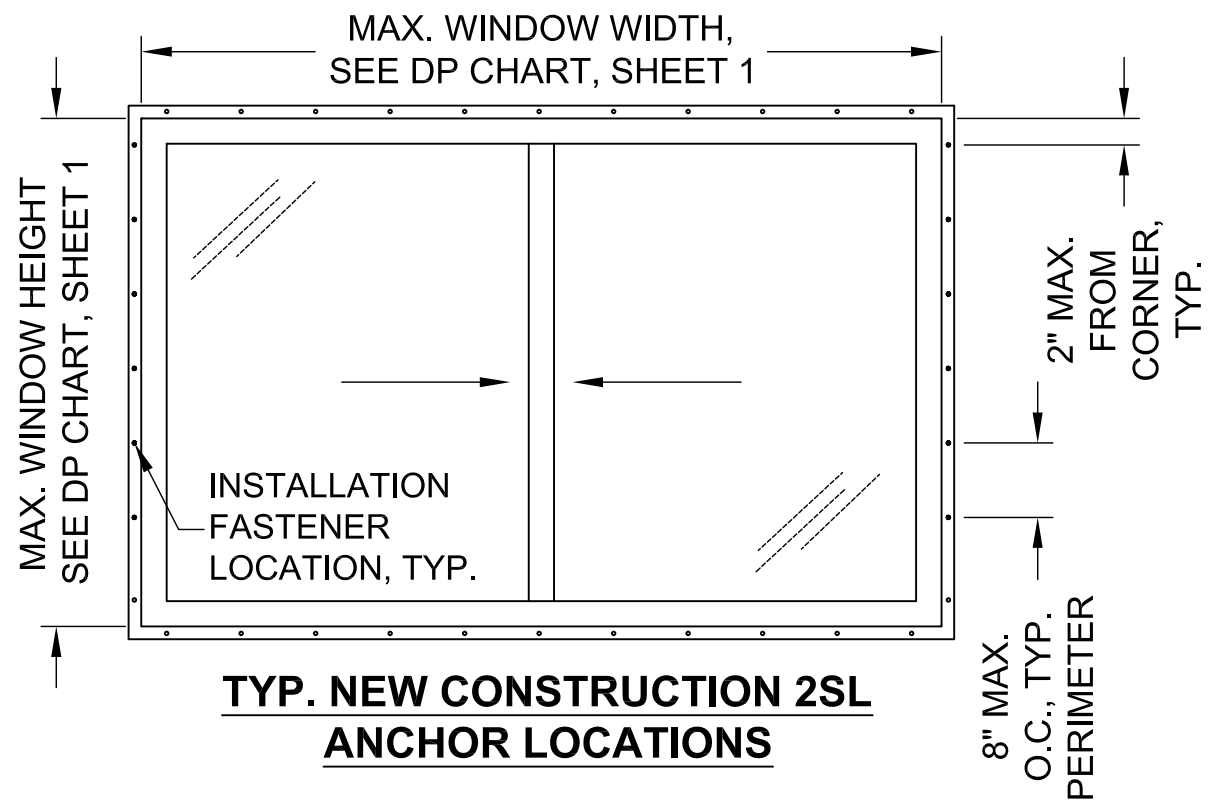
# CRUSADER ELITE HORIZONTAL SLIDING WINDOW, NON-IMPACT



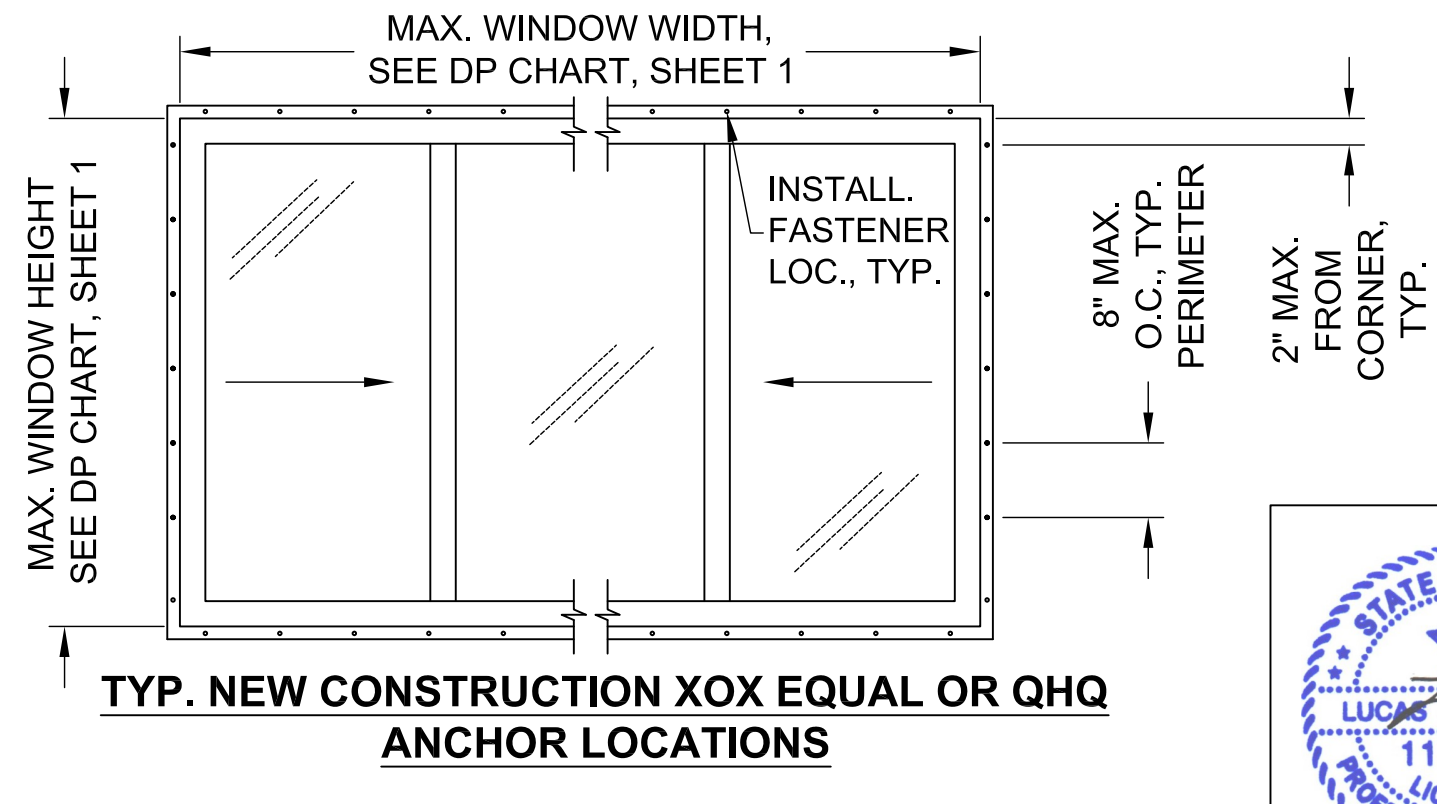
**TYP. REPLACEMENT 2SL  
ANCHOR LOCATIONS**



**TYP. REPLACEMENT XOX EQUAL OR QHQ  
ANCHOR LOCATIONS**



**TYP. NEW CONSTRUCTION 2SL  
ANCHOR LOCATIONS**



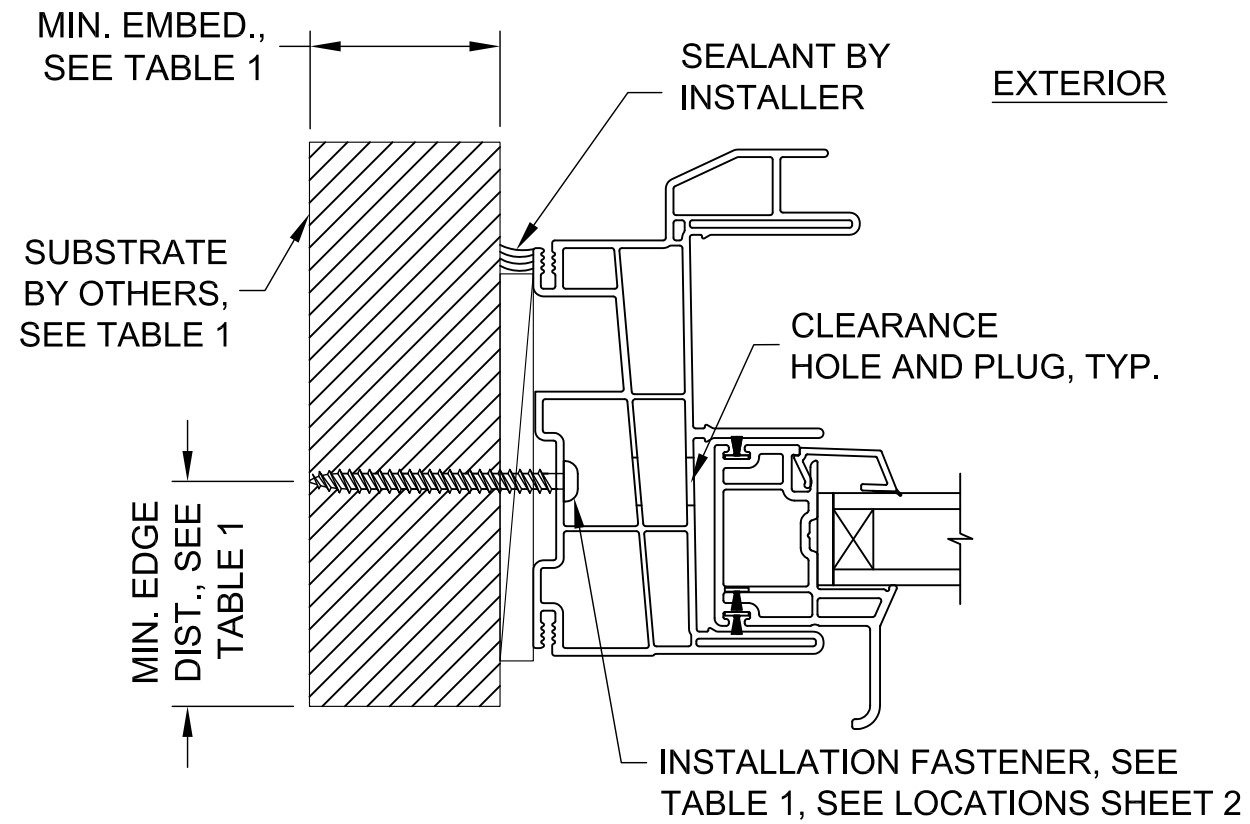
**TYP. NEW CONSTRUCTION XOX EQUAL OR QHQ  
ANCHOR LOCATIONS**

|   |                          |
|---|--------------------------|
| <b>NORTHEAST BUILDING PRODUCTS</b>  |                          |
| 4280 Aramingo Ave., Philadelphia, PA 19124<br>Ph. (215) 535-7110 www.camelotwindows.com |                          |
| SHEET DESCRIPTION:<br>NOTES, ELEVATION  | DATE DRAWN:<br>2/10/2020 |
| SCALE: NTS  | REV: 0                   |
| DRAWING: TDI-ELITE-HS-NI  | SHEET: 2 OF 4            |



11/12/2020  
Lucas A. Turner, P.E.  
TX PE #115094  
2428 Old Natchez Trc Trl  
Camden, TN 38320  
Ph. 941-380-1574

# CRUSADER ELITE HORIZONTAL SLIDING WINDOW, NON-IMPACT, REPLACEMENT



## TYPICAL JAMB HORIZONTAL SECTION

INNER SASH JAMB SHOWN,  
OUTER SASH JAMB SIMILAR

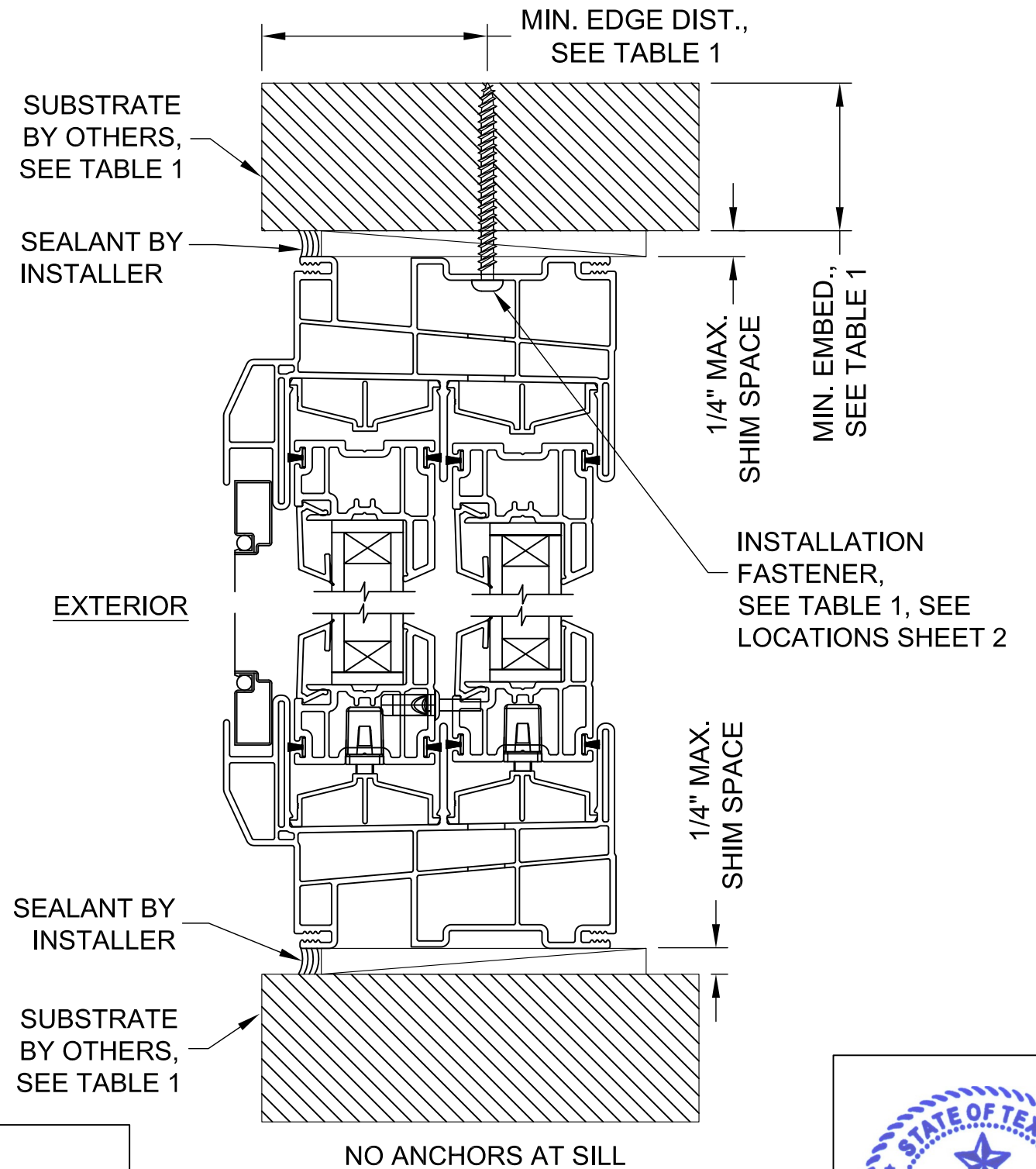


TABLE 1: REPLACEMENT FRAME INSTALLATION ANCHOR REQUIREMENTS TABLE

| SUBSTRATE TYPE  | ANCHOR TYPE  | MIN. EMBED. | MIN. EDGE DIST. |
|---|--|-------------|-----------------|
| CONCRETE (2.0 KSI MIN)  | 3/16" ITW TAPCON                                       | 1"          | 1 1/8"          |
| HOLLOW OR GROUT-FILLED CMU (117 PCF MIN.)                                       | 3/16" ITW TAPCON                                       | 1"          | 2"              |
| CONCRETE (2.85 KSI MIN.)  | 3/16" ELCO ULTRACON                                    | 1"          | 1"              |
| HOLLOW OR GROUT-FILLED CMU (ASTM C90)   | 3/16" ELCO ULTRACON                                    | 1-1/4"      | 2 1/2"          |
| 2X MIN. SPRUCE-PINE-FIR WOOD (G=0.42)   | #8 WOOD SCREW  | 1-3/8"      | 1"              |
| 16 GAUGE (0.060") MIN. STEEL STUD, 33KSI YIELD MIN., OR 1/8" ALUM. 6063-T5 MIN. | #10-16 HILTI KWIK-FLEX OR ITW TEKS SELF-DRILLING SCREW | FULL        | 1/2"            |

## NORTHEAST BUILDING PRODUCTS

4280 Aramingo Ave., Philadelphia, PA 19124  
Ph. (215) 535-7110 www.camelotwindows.com

SHEET DESCRIPTION:  
REPLACEMENT INSTALLATION

DATE DRAWN:  
2/10/2020

SCALE: NTS

REV: 0

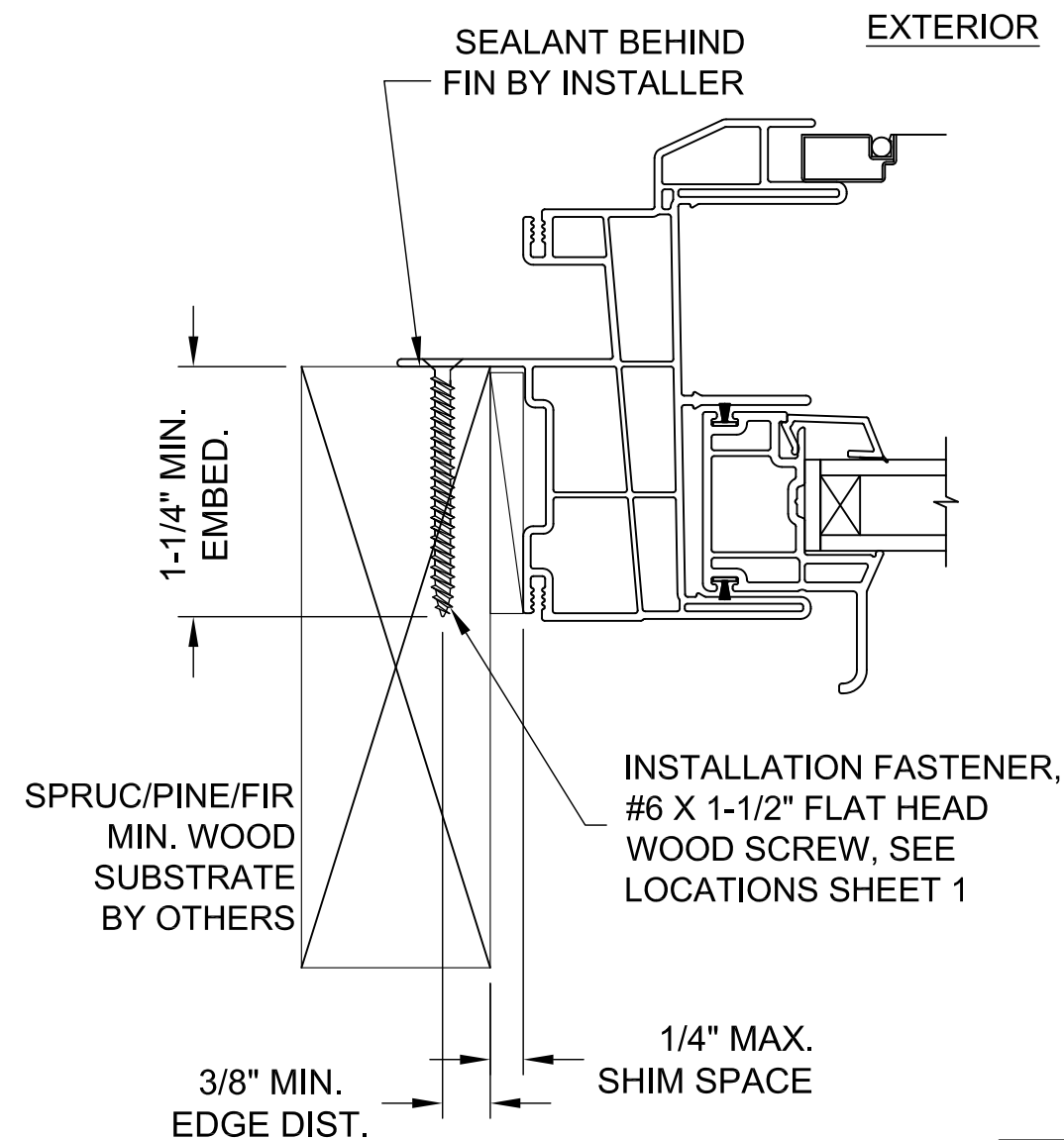
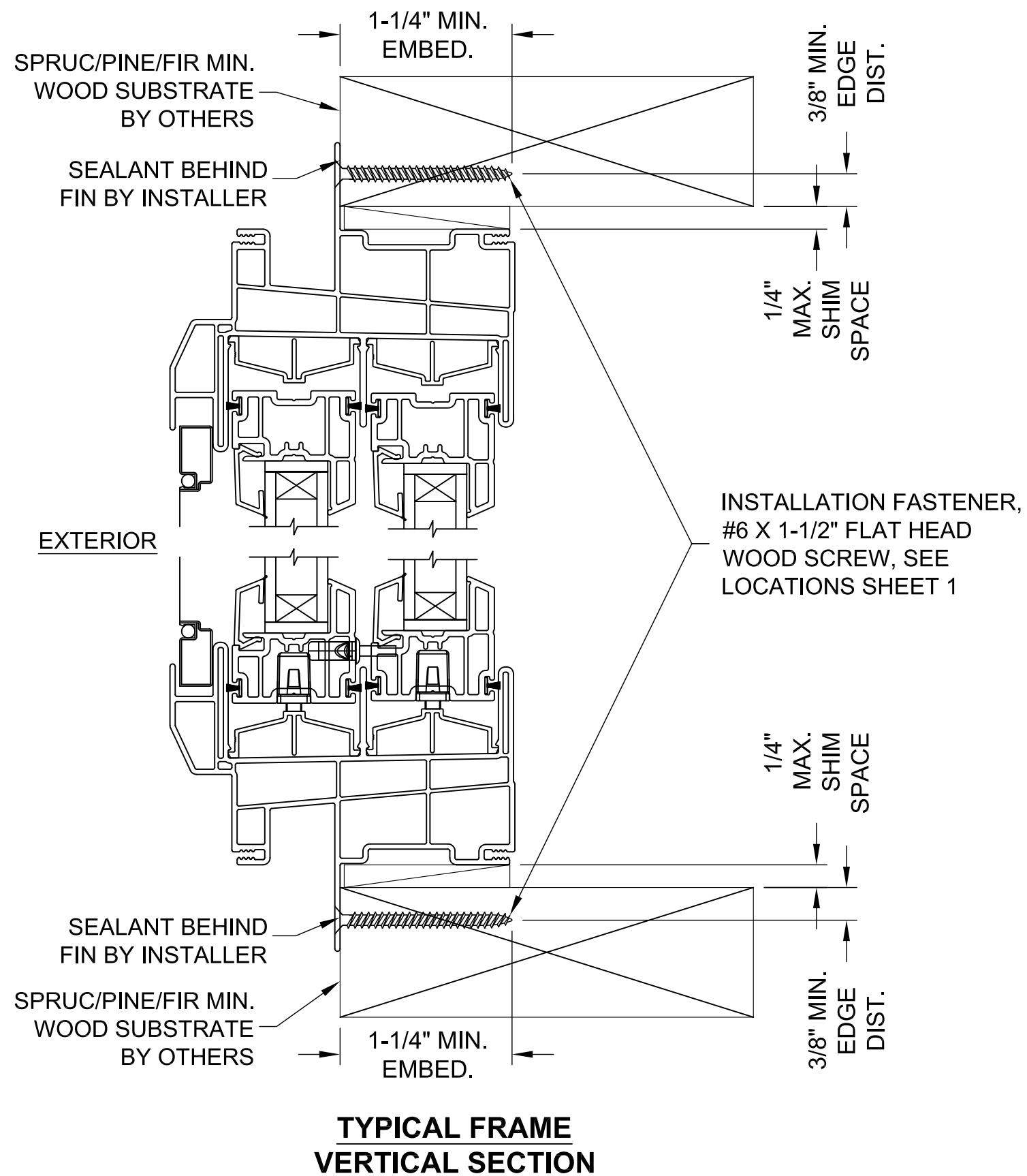
DRAWING: TDI-ELITE-HS-NI

SHEET: 3 OF 4



11/12/2020  
Lucas A. Turner, P.E.  
TX PE #115094  
2428 Old Natchez Trc Trl  
Camden, TN 38320  
Ph. 941-380-1574

# CRUSADER ELITE HORIZONTAL SLIDING WINDOW, NON-IMPACT, NEW CONSTRUCTION



## TYPICAL JAMB HORIZONTAL SECTION

INNER SASH JAMB SHOWN, OUTER SASH JAMB SIMILAR

### NORTHEAST BUILDING PRODUCTS

4280 Aramingo Ave., Philadelphia, PA 19124  
Ph. (215) 535-7110 www.camelotwindows.com

|  |                          |
|--|--------------------------|
| SHEET DESCRIPTION:<br>NEW CONSTR. INSTALLATION | DATE DRAWN:<br>2/10/2020 |
| SCALE: NTS                                     | REV: 0                   |
| DRAWING: TDI-ELITE-HS-NI                       | SHEET: 4 OF 4            |



11/12/2020  
Lucas A. Turner, P.E.  
TX PE #115094  
2428 Old Natchez Trc Trl  
Camden, TN 38320  
Ph. 941-380-1574