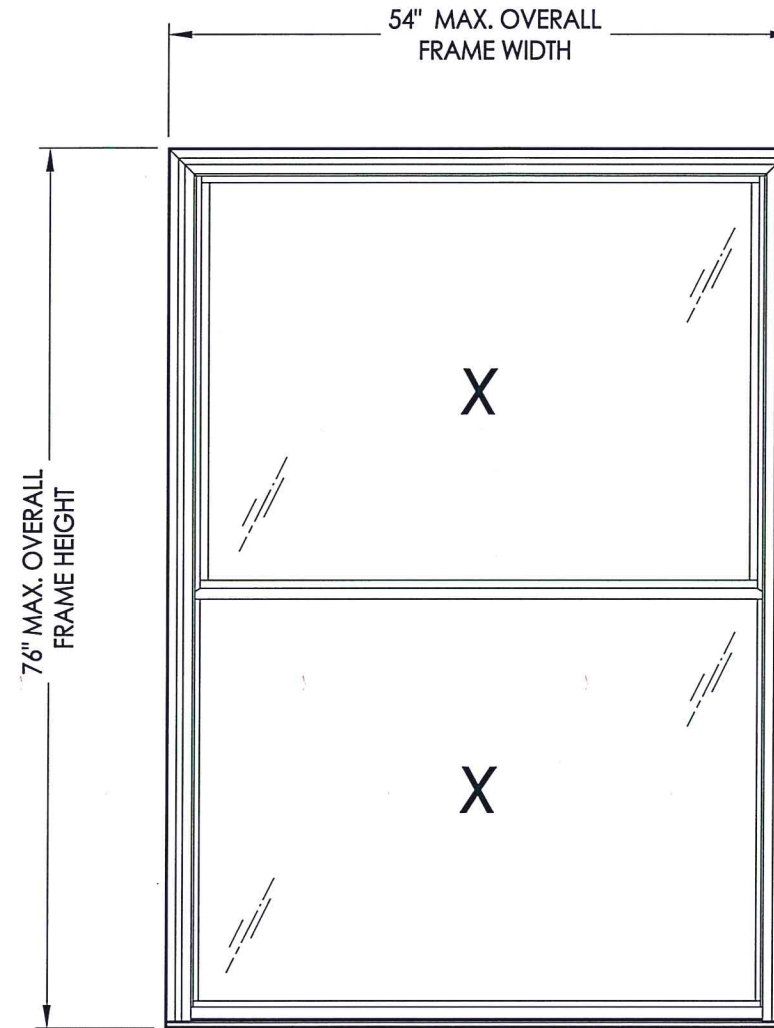




# 8400 Double Hung Window

## "NON-IMPACT"



### EVALUATED FOR USE IN THE STATE OF TEXAS

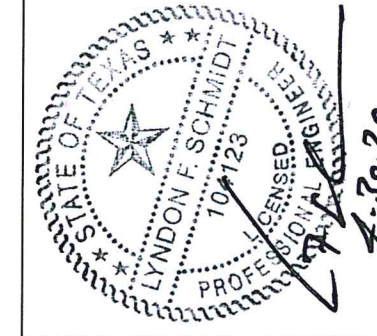
The Double Hung Window described herein complies with the 2018 International Residential Code (IRC), Sections R301 & R609 and the 2018 International Building Code (IBC), Sections 1404.13, 1609, 1709.5, 2403 and 2404 subject to the following conditions:

1. Anchors shall be as listed and spaced as shown in the details. Anchor embedment to base material shall be beyond wall dressing or stucco.
2. When used in areas requiring wind-borne debris protection this product is required to be protected with an impact resistant covering that complies with Section R301.2.1.2 of the IRC and Section 1609.1.2 of the IBC.
3. Allowable design pressure requirements must be equal to or less than the design pressure rating shown in the design pressure chart, sheet 1 of this drawing.
4. Conditions not covered by this drawing are subject to further engineering analysis.

**TABLE OF CONTENTS**

SHEET#	DESCRIPTION
1	Typical elevations, design pressures & general notes
2	Vertical & horizontal cross sections & frame anchoring
3	Components
4	Bill of materials and glazing details

MAX FRAME DIMENSION	MAX D.L.O. DIMENSION	GLASS TYPE	DESIGN PRESSURE (PSF)	
			POS.	NEG.
54.0" X 76.0"	47.87" X 34.25"	G1	+30.0	-40.0



Documents Prepared By: Lyndon F. Schmidt, P.E.  
TEXAS P.E. #104123

**RW** BUILDING CONSULTANTS, INC.  
P.O. Box 230 Vairico FL 33595  
Phone No.: 813.659.9197

TEXAS BOARD OF PROFESSIONAL ENGINEERS  
CERTIFICATE OF REGISTRATION # F-11852

PRODUCT: DOUBLE HUNG WINDOW

PART OR ASSEMBLY: TYPICAL ELEVATION, DESIGN PRESSURES & GENERAL NOTES

NO.	DATE	BY	REVISIONS

DATE: 4/30/20

SCALE: N.T.S.

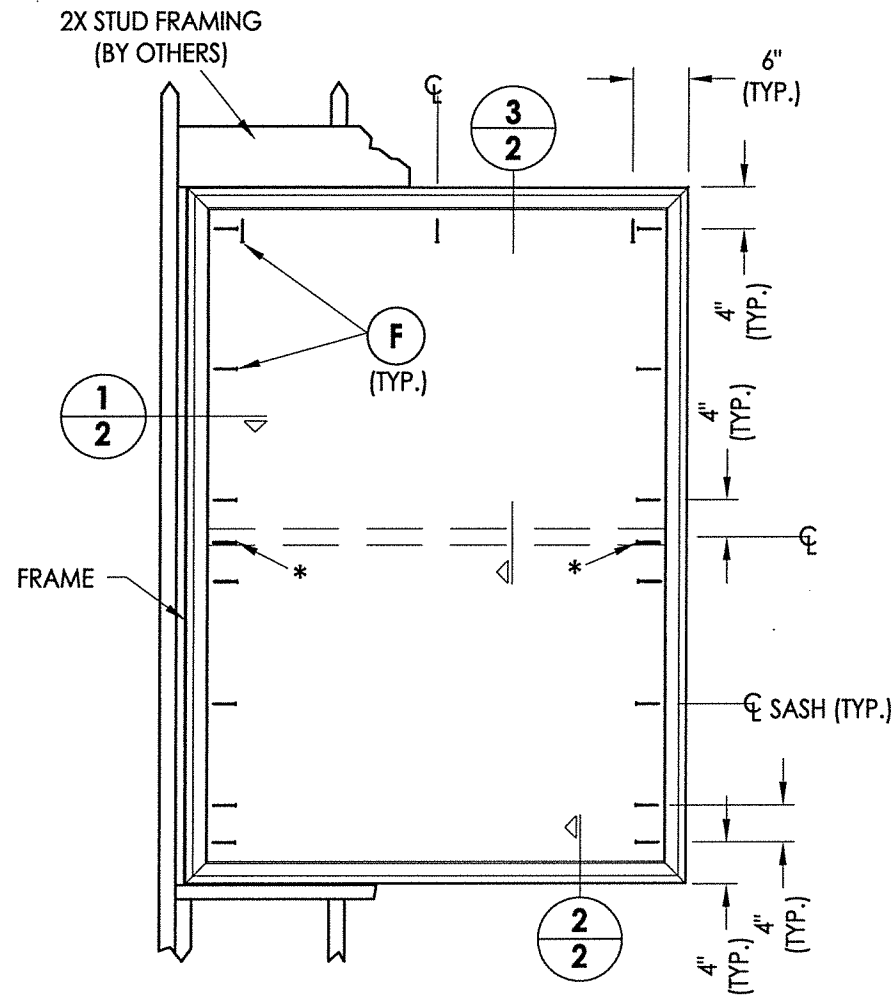
DWG. BY: RW

CHK. BY: LFS

DRAWING NO.: TX-5034

SHEET 1 OF 4

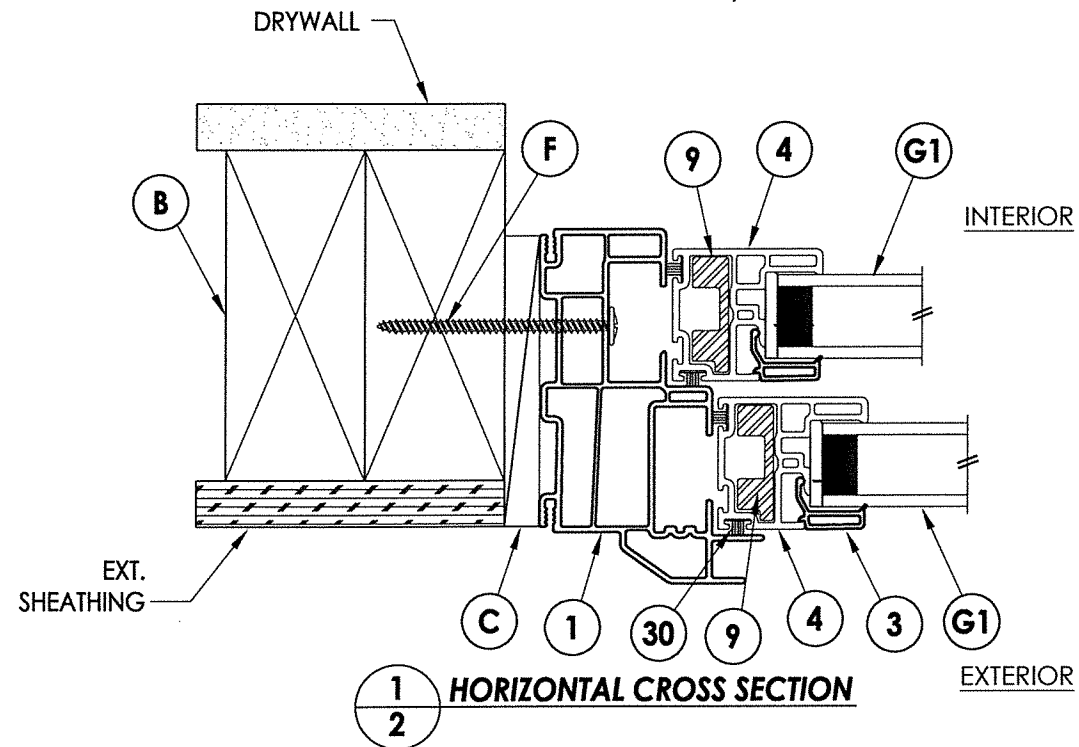
R:\Clients\New South Windows PERMANENT\B - Texas Dept of Ins\TDI - XXX 8400 DH\Drawings\TX-5034.dwg .2



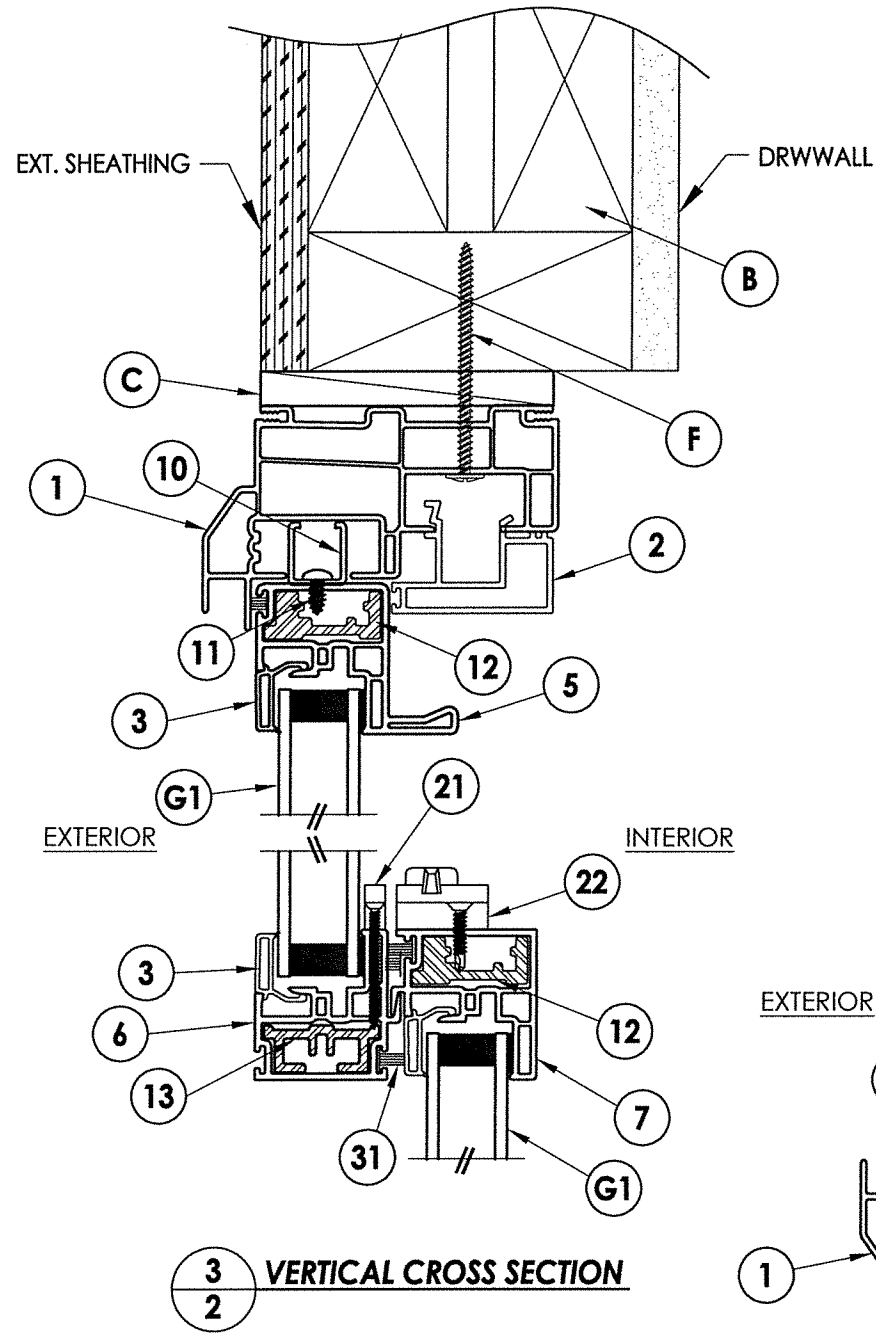
**FRAME ANCHORING**

NOTE:  
1. LOCK AND KEEPER LOCATED 7" FROM EACH END OF LOCK/MEETING RAIL.

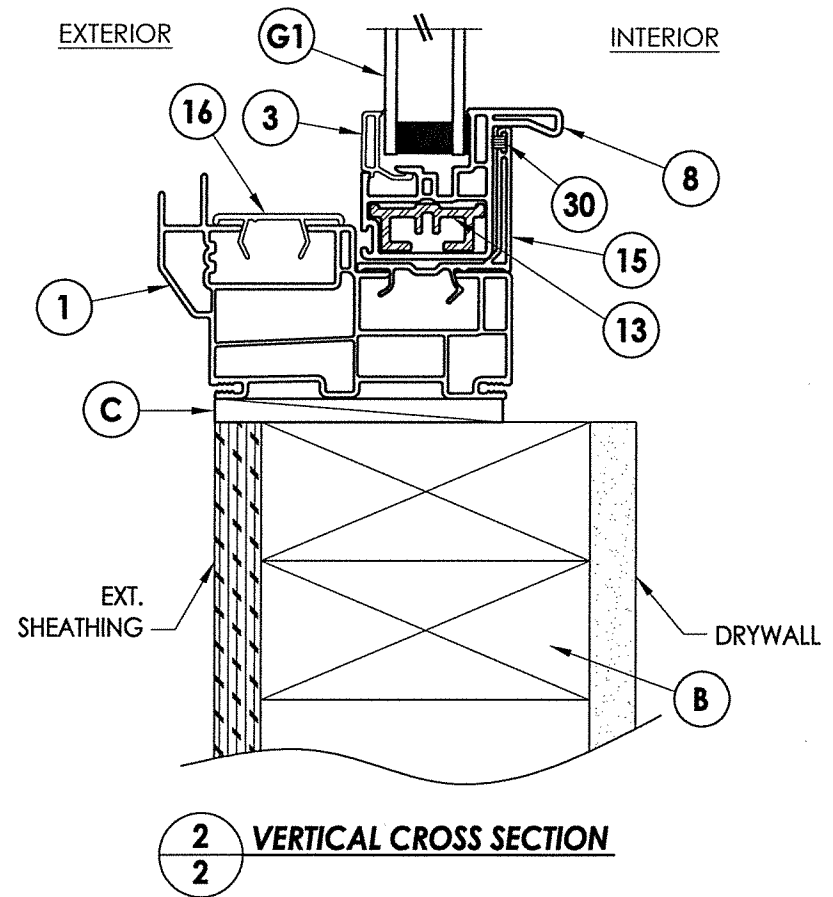
\* ANCHOR THRU TILT LATCH INTO WOOD SUBSTRATE USING A SIMILAR FLAT HEAD ANCHOR (1-3/8" MIN. EMBEDMENT)



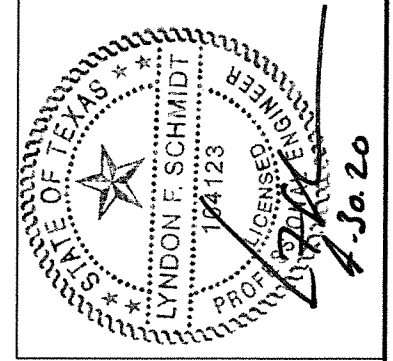
**1 HORIZONTAL CROSS SECTION**



**3 VERTICAL CROSS SECTION**



**2 VERTICAL CROSS SECTION**



Documents Prepared By: Lyndon F. Schmidt, P.E.  
TEXAS P.E. #104123

**RW** BUILDING CONSULTANTS, INC.  
P.O. Box 230 Valrico FL 33595  
Phone No.: 813.659.9197  
TEXAS BOARD OF PROFESSIONAL ENGINEERS  
CERTIFICATE OF REGISTRATION # F-11852

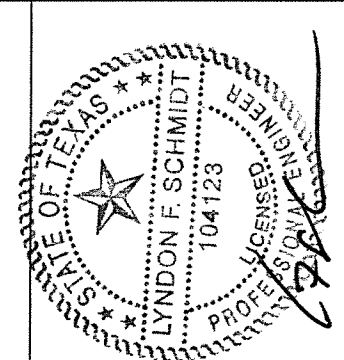
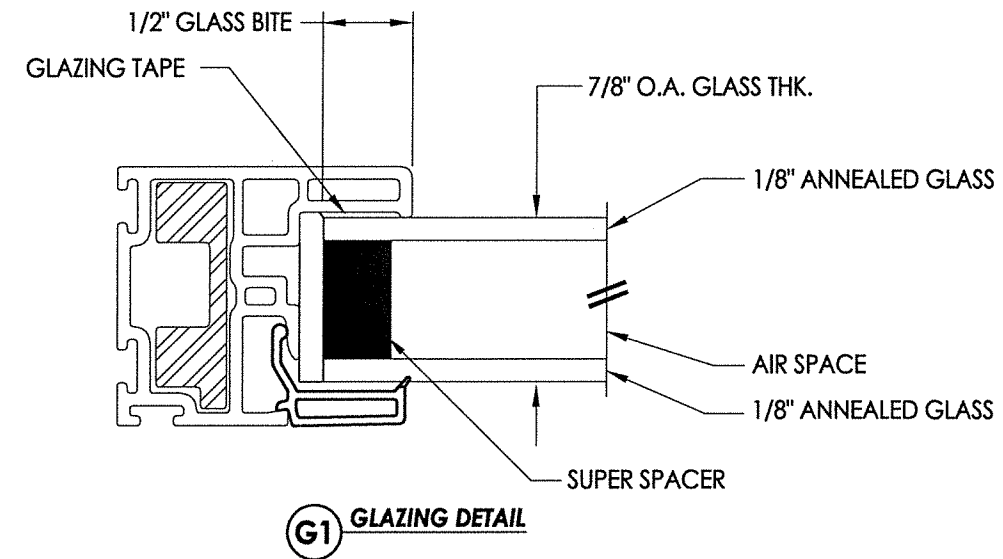
PRODUCT: DOUBLE HUNG WINDOW	
PART OR ASSEMBLY: VERTICAL & HORIZONTAL CROSS SECTIONS & FRAME ANCHORING	
NO.	DATE
BY	REVISIONS
DATE: 4/30/20	
SCALE: N.T.S.	
DWG. BY: RW	
CHK. BY: LFS	
DRAWING NO.: TX-5034	
SHEET 2 OF 4	

© 2020 R.W. BUILDING CONSULTANTS INC.



BILL OF MATERIALS		
ITEM #	DESCRIPTION	MATERIAL
B	2X FRAMING (SG >= 0.42)	WOOD
C	3/8 MAX. SHIM SPACE @ HEAD & JAMBS, 1/4" @ SILL	STEEL
F	#8 X 2-1/2" MODIFIED TRUSS HEAD SCREW (7/16"Ø HEAD) (1-3/8" MIN. EMBEDMENT)	STEEL
1	FRAME*	PVC
2	HEAD ADAPTER*	PVC
3	GLAZING BEAD*	PVC
4	STILE *	PVC
5	PULL RAIL (TOP SASH)*	PVC
6	KEEPER RAIL (TOP SASH)*	PVC
7	LOCK RAIL (BOTTOM SASH)*	PVC
8	LIFT RAIL (BOTTOM SASH)*	PVC
9	REINFORCEMENT (6065-T5 ALUM)	ALUM
10	INTERLOCK CLIP	STEEL
11	#6 X 1/2" PPH SMS	STEEL
12	REINFORCEMENT (6065-T5 ALUM)	ALUM
13	REINFORCEMENT (6065-T5 ALUM)	ALUM
15	SILL ADAPTER*	PVC
16	SILL CAP*	PVC
21	KEEPER - TRUTH #C41275	-
22	LOCK ASSEMBLY - TRUTH #A30700401	-
30	CENTER FIN PILE (0.187" X 0.190")	-
31	CENTER FIN PILE (0.270" X 0.220")	-

\* THE APPROVED WHITE RIGID PVC EXTERIOR EXTRUSIONS FOR WINDOWS ARE TO BE PRODUCED BY EXTRUDERS LICENSEES IN "CERTIFICATION PROGRAMS FOR RIGID PVC EXTRUSIONS".



Documents Prepared By: Lyndon F. Schmidt, P.E.  
TEXAS P.E. #104123

**RW** BUILDING CONSULTANTS, INC.  
P.O. Box 230 Valrico FL 33595  
Phone No.: 813.659.9197

TEXAS BOARD OF PROFESSIONAL ENGINEERS  
CERTIFICATE OF REGISTRATION # F-11852

PRODUCT: DOUBLE HUNG WINDOW

PART OR ASSEMBLY: BILL OF MATERIALS AND GLAZING DETAILS

NO.	DATE	BY	REVISIONS

DATE: 4/30/20  
SCALE: N.T.S.  
DWG. BY: RW  
CHK. BY: LFS  
DRAWING NO.: TX-5034  
SHEET 4 OF 4