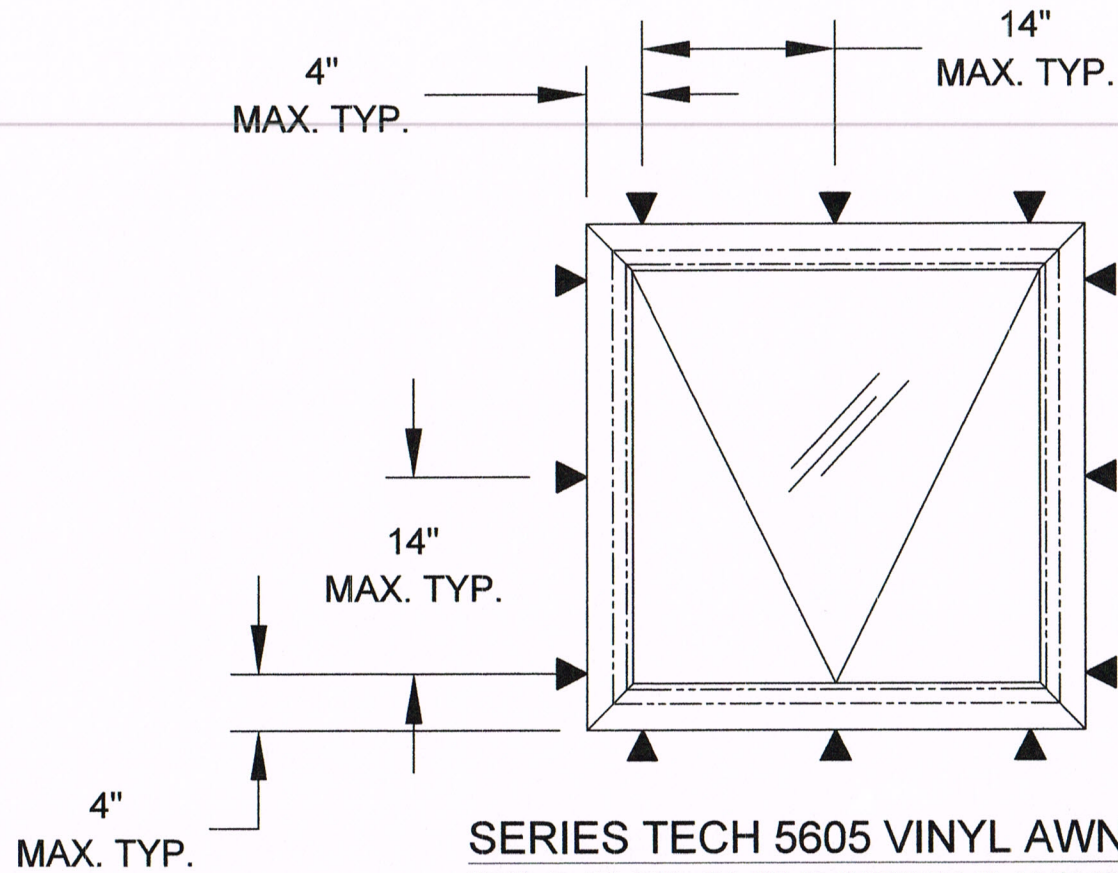


**SERIES TECH 5605 VINYL AWNING
(PROJECT-OUT BOTTOM) WINDOW
EXTERIOR VIEW**



**SERIES TECH 5605 VINYL AWNING
(PROJECT-OUT BOTTOM) WINDOW
EXTERIOR VIEW - ANCHORAGE**

INSTALLATION NOTES:

1. HEAD AND SILL ANCHORAGE THE SAME.
2. JAMB ANCHORAGE SAME.
3. +/- 1" TOLERANCE ON ANCHOR LOCATION.
 - 3.1. TAPCON MINIMUM SPACING IS 4" OC.
 - 3.2. WOOD AND TAPPING SCREW MINIMUM SPACING IS 2" OC.

NOTES:

1. MAXIMUM ACTIVE PANEL (VENT) SIZE: 34.19" X 34.06" (34-3/16" X 34-1/16")
2. DAYLIGHT OPENING (DLO) SIZE: 29.38" X 29.12" (29-3/8" X 29-1/8")
3. NO WEEP HOLES EMPLOYED

DESIGN PRESSURE RATING (PSF)	IMPACT RATING
+55.0/-55.0	WIND ZONE 4 MISSILE LEVEL D

PROJECT #418-0810		REV	DESCRIPTION	DATE	BY

REGENCY PLUS, INC.
2000 LOCUST GAP HIGHWAY
MT. CARMEL, PA 17851

TITLE: SERIES TECH 5605 VINYL AWNING WINDOW
ELEVATION AND ANCHOR LAYOUT

DRAWN BY: RJA **DATE:** 3/13/19

SCALE: N.T.S. **DRAWING NO.:** RPLS1079

REV: — **SHEET:** 2 OF 4

PTC Product Design Group, LLC
PO Box 520775, Longwood, FL 32752-0775
321-690-1788 info@ptc-corp.com
TX Registration No. F-13740

Robert J. Amoruso, P.E.
Texas P.E. No. 80817

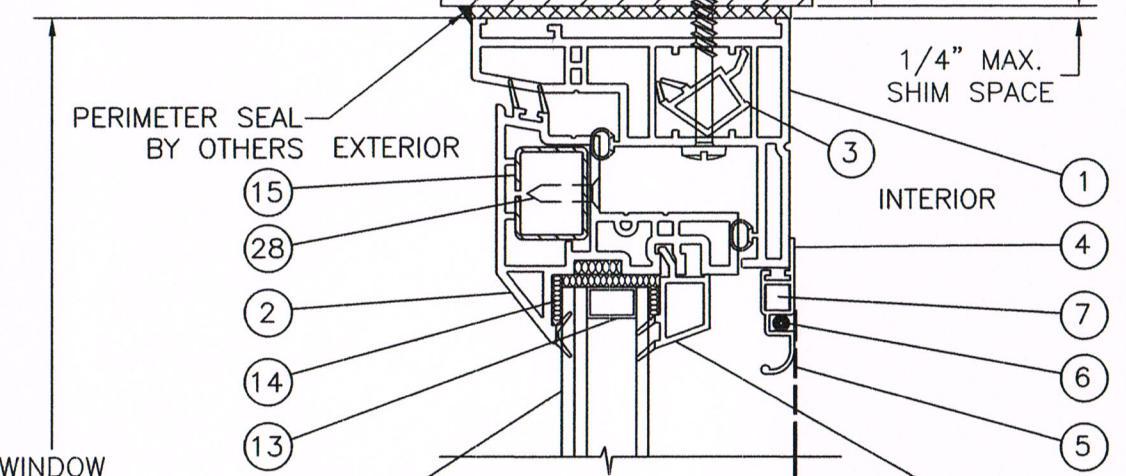
6/3/19

ROBERT JAMES AMORUSO
80817
LICENSED PROFESSIONAL ENGINEER

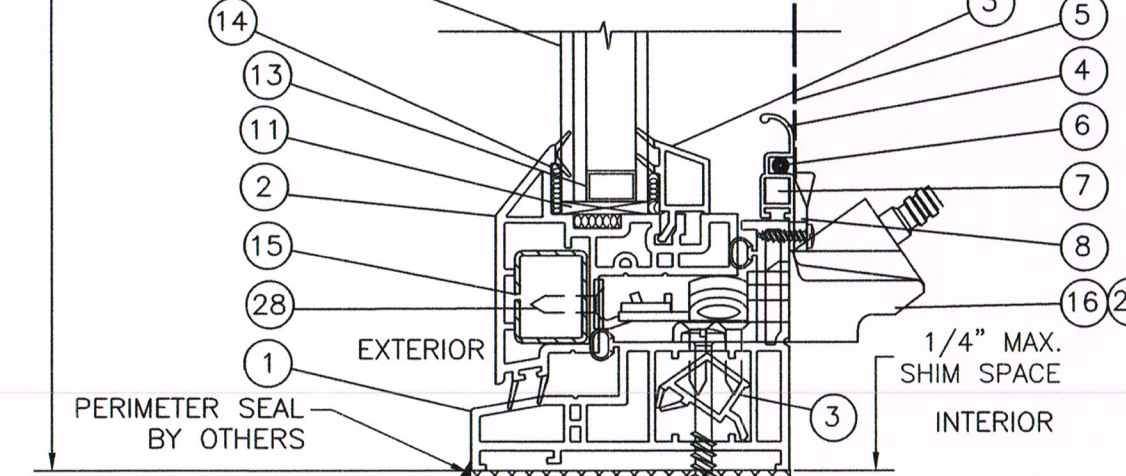
INSTALLATION ANCHOR. WOOD SCREW SHOWN. SEE NOTE 5, SHEET 3 FOR ANCHOR TYPE REQUIRED.

MIN. EDGE DISTANCE. SEE NOTE 5, SHEET 3.

INSTALLATION SUBSTRATE BY OTHERS. SEE NOTES 1 TO 3, SHEET 3.



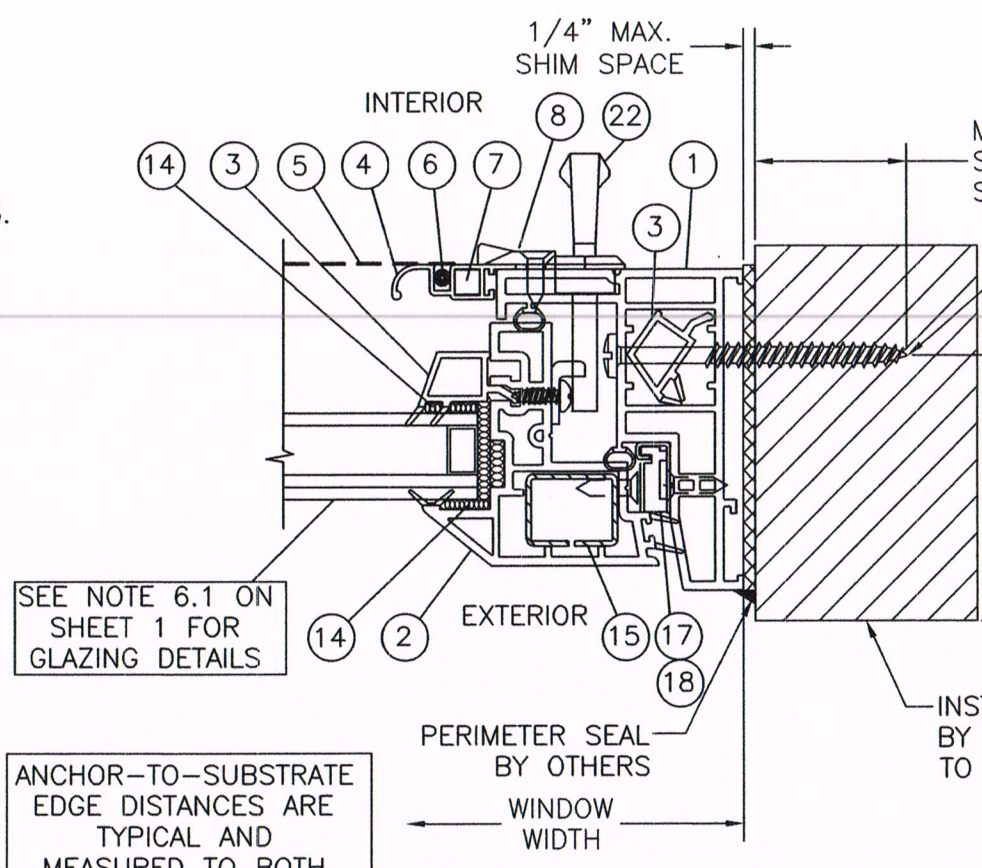
SEE NOTE 6.1 ON SHEET 1 FOR GLAZING DETAILS



INSTALLATION SUBSTRATE BY OTHERS. SEE NOTES 1 TO 3, SHEET 3.

MIN. EDGE DISTANCE. SEE NOTE 5, SHEET 3.

VERTICAL CROSS SECTION A-A
WOOD FRAMING, 2X WOOD BUCK,
CONCRETE/MASONRY OR METAL FRAME
APPROVED



SEE NOTE 6.1 ON SHEET 1 FOR GLAZING DETAILS

ANCHOR-TO-SUBSTRATE EDGE DISTANCES ARE TYPICAL AND MEASURED TO BOTH SIDES OF SUBSTRATE

HORIZONTAL (JAMB) CROSS SECTION B-B
FRAMING, 2X WOOD BUCK, CONCRETE/MASONRY OR METAL FRAME APPROVED

MIN. EMBEDMENT, SEE NOTE 5, SHEET 3.

INSTALLATION ANCHOR. WOOD SCREW SHOWN. SEE NOTE 5, SHEET 3 FOR ANCHOR TYPE REQUIRED.

MIN. EDGE DISTANCE. SEE NOTE 5, SHEET 3.

INSTALLATION SUBSTRATE BY OTHERS. SEE NOTES 1 TO 3, SHEET 3.

INSTALLATION NOTES:

1. APPROVED INSTALLATION SUBSTRATES INCLUDE THE FOLLOWING:
 - 1.1. WOOD FRAMING,
 - 1.2. STEEL STUD FRAMING,
 - 1.3. ALUMINUM FRAMING, AND
 - 1.4. CONCRETE AND/OR MASONRY.
2. 2X WOOD FRAMING, 1X OR 2X WOOD BUCK, METAL FRAMING AND CONCRETE/MASONRY OPENING TO BE DESIGNED AND ANCHORED TO PROPERLY TRANSFER ALL LOADS TO STRUCTURE. FRAMING AND CONCRETE/MASONRY OPENING IS THE RESPONSIBILITY OF THE ARCHITECT OR ENGINEER OF RECORD.
3. 1X BUCK OVER CONCRETE/MASONRY IS OPTIONAL. WHEN 1X BUCK IS USED, INSTALLATION ANCHORS WILL PASS THROUGH WINDOW FRAME AND 1X BUCK INTO CONCRETE/MASONRY SUBSTRATE. WHEN USED, 1X BUCKS SHALL BE DESIGNED AND ANCHORED TO PROPERLY TRANSFER ALL LOADS TO STRUCTURE AND IS THE RESPONSIBILITY OF THE ARCHITECT OR ENGINEER OF RECORD. DISSIMILAR MATERIALS MUST BE SEPARATED WITH APPROVED COATING OR MEMBRANE. SELECTION OF COATING OR MEMBRANE IS THE RESPONSIBILITY OF THE ARCHITECT OR ENGINEER OF RECORD.
4. SHIM AS REQUIRED AT EACH INSTALLATION ANCHOR WITH LOAD BEARING SHIM. SHIM WHERE SPACE OF 1/16" OR GREATER OCCURS. MAXIMUM ALLOWABLE SHIM STACK TO BE 1/4".
5. FOR ANCHORING INTO CONCRETE/MASONRY USE 1/4" HEX HEAD TAPCONS WITH SUFFICIENT LENGTH TO ACHIEVE A 1 1/2" MINIMUM EMBEDMENT INTO CONCRETE WITH 1 1/2" MINIMUM EDGE DISTANCE AND 1" MINIMUM EMBEDMENT INTO MASONRY WITH 2" MINIMUM EDGE DISTANCE. LOCATE ANCHORS AS SHOWN IN ELEVATIONS AND INSTALLATION DETAILS. 4" MINIMUM SPACING BETWEEN ADJACENT ANCHORS REQUIRED. ANCHOR LOCATIONS HAVE +/- 1" TOLERANCE.
6. FOR ANCHORING INTO WOOD FRAMING OR 2X BUCK USE ONE OF THE FOLLOWING:
 - 6.1. #12 PAN HEAD WOOD SCREWS WITH SUFFICIENT LENGTH TO ACHIEVE A 1 3/8" MINIMUM EMBEDMENT INTO SUBSTRATE WITH 7/8" MINIMUM EDGE DISTANCE AND MINIMUM ANCHOR-TO-ANCHOR SPACING OF 2" ON CENTER. LOCATE ANCHORS AS SHOWN IN ELEVATIONS AND INSTALLATION DETAILS. ANCHOR LOCATIONS HAVE +/- 1" TOLERANCE.
 - 6.2. #14 PAN HEAD WOOD SCREWS WITH SUFFICIENT LENGTH TO ACHIEVE A 1 1/2" MINIMUM EMBEDMENT INTO SUBSTRATE WITH 1" MINIMUM EDGE DISTANCE AND MINIMUM ANCHOR-TO-ANCHOR SPACING OF 2" ON CENTER. LOCATE ANCHORS AS SHOWN IN ELEVATIONS AND INSTALLATION DETAILS. ANCHOR LOCATIONS HAVE +/- 1" TOLERANCE.
7. FOR ANCHORING INTO METAL STRUCTURE USE #14 PAN OR HEX HEAD SMS OR SELF DRILLING SCREWS WITH SUFFICIENT LENGTH TO ACHIEVE 3 THREADS MINIMUM BEYOND STRUCTURE INTERIOR WALL WITH 3/4" MINIMUM EDGE DISTANCE AND MINIMUM ANCHOR-TO-ANCHOR SPACING OF 2" ON CENTER. LOCATE ANCHORS AS SHOWN IN ELEVATIONS AND INSTALLATION DETAILS. ANCHOR LOCATIONS HAVE +/- 1" TOLERANCE.
8. INTERIOR AND EXTERIOR FINISHES BY OTHERS. NOT SHOWN FOR CLARITY.
9. PERIMETER AND JOINT SEALANT BY OTHERS TO BE DESIGNED AND/OR SPECIFIED IN ACCORDANCE WITH ASTM E2112.

PROJECT #418-0810	BY
	DATE
	DESCRIPTION
	REV

REGENCY PLUS, INC.
2000 LOCUST GAP HIGHWAY
MT. CARMEL, PA 17851

SERIES TECH 5605 VINYL AWNING WINDOW
VERTICAL & HORIZONTAL SECTIONS

DATE: 3/13/19
DRAWING NO: RPLS1079
SCALE: N.T.S.
SHEET: 3 OF 4

PTC Product Design Group, LLC
PO Box 520775, Longwood, FL 32752-0775
321-690-1788 info@ptc-corp.com
TX Registration No. F-13740

Robert J. Amoruso, P.E.
Texas P.E. No. 80817

