

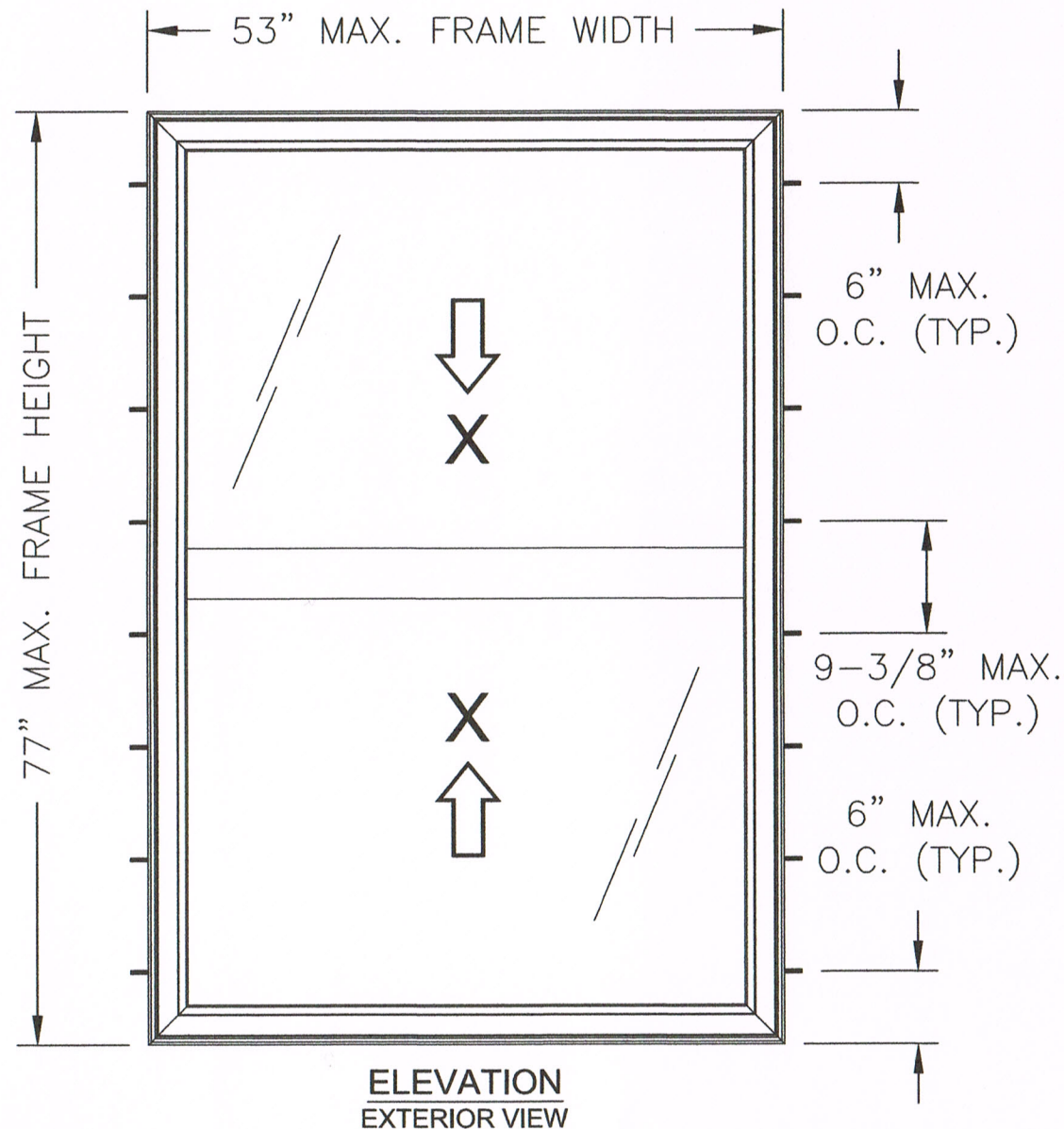
# REGENCY PLUS, INC.

## SERIES 8313 VINYL TILT DOUBLE HUNG WINDOW

### INSTALLATION ANCHORAGE DETAILS

**NOTES:**

1. THE PRODUCT SHOWN HEREIN IS DESIGNED AND MANUFACTURED TO COMPLY WITH REQUIREMENTS OF THE 2006 IBS AND 2006 IRC WITH TEXAS REVISIONS AND THE 2009 IBC, 2009 IRC, 2012 IBC AND 2012 IRC.
2. WOOD FRAMING, 2X WOOD BUCK, METAL FRAMING AND CONCRETE/MASONRY OPENING TO BE DESIGNED AND ANCHORED TO PROPERLY TRANSFER ALL LOADS TO STRUCTURE. FRAMING AND CONCRETE/MASONRY OPENING IS THE RESPONSIBILITY OF THE ARCHITECT OR ENGINEER OF RECORD.
3. 1X BUCK OVER CONCRETE/MASONRY IS OPTIONAL. WHERE 1X BUCKS ARE USED, INSTALLATION ANCHORS WILL PASS THROUGH WINDOW FRAME AND 1X BUCK INTO CONCRETE/MASONRY SUBSTRATE. WHERE 1X BUCK IS NOT USED, INSTALLATION ANCHORS WILL PASS THROUGH WINDOW FRAME INTO CONCRETE/MASONRY SUBSTRATE. DISSIMILAR MATERIALS MUST BE SEPARATED WITH APPROVED COATING OR MEMBRANE. SELECTION OF COATING OR MEMBRANE IS THE RESPONSIBILITY OF THE ARCHITECT OR ENGINEER OF RECORD.
4. THE PRODUCT SHOWN HEREIN HAS BEEN TESTED TO THE FOLLOWING.
  - 4.1. AAMA/WDMA/CSA 101/I.S.2/A440-11. SEE TEST REPORT NO. NCTL-110-21524-2, DATED 10/16/18 BY NATIONAL CERTIFIED TESTING LABORATORIES, YORK, PA.
5. MATERIAL:
  - 5.1. FRAME: EXTRUDED RIGID PVC
  - 5.2. REINFORCEMENT:
    - 5.2.1. GALVANIZED STEEL TUBE - TOP RAIL OF SASH AND INTERIOR MEETING RAIL.
    - 5.2.2. U-SHAPED GALVANIZED STEEL - BOTTOM RAIL OF SASH AND EXTERIOR MEETING RAIL.
6. GLAZING:
  - 6.1. GLAZING DETAIL AS TESTED: 22.1mm (0.870") NOMINAL O.A. IGU COMPRISED OF 2 LITES OF 3mm (0.119") TEMPERED GLASS AND 16.05mm (0.632") STAINLESS STEEL SPACER (TYPE SS-D). INTERIOR GLAZED AGAINST A (2)-LEAF DUAL DUROMETER BACK BEDDING AND A SNAP-IN (2)-LEAF DUAL DUROMETER RIGID VINYL GLAZING BEAD.
  - 6.2. AS TESTED GLAZING MEETS ASTM E1300-09a FOR THE DESIGN CONDITIONS SHOWN IN THIS PRODUCT APPROVAL DOCUMENT.
  - 6.3. ALTERNATE GLAZING MEETING THE REQUIREMENTS OF AAMA/WDMA/CSA 101/I.S.2/A440 SHALL BE ALLOWED PER ASTM E1300 IN NON-HVHZ LOCATIONS.
7. APPROVED IMPACT PROTECTIVE SYSTEM IS REQUIRED FOR THIS PRODUCT IN WIND BORNE DEBRIS REGIONS.
8. SHIM AS REQUIRED AT EACH INSTALLATION ANCHOR WITH LOAD BEARING SHIM. SHIM WHERE SPACE OF 1/16" OR GREATER OCCURS. MAXIMUM ALLOWABLE SHIM STACK TO BE 1/4".
9. FOR ANCHORING INTO CONCRETE/MASONRY USE 3/16" FLAT HEAD TAPCONS WITH SUFFICIENT LENGTH TO ACHIEVE A 1 1/2" MINIMUM EMBEDMENT INTO CONCRETE WITH 1 1/8" MINIMUM EDGE DISTANCE AND 1" MINIMUM EMBEDMENT INTO MASONRY WITH 2" MINIMUM EDGE DISTANCE. LOCATE ANCHORS AS SHOWN IN ELEVATIONS AND INSTALLATION DETAILS. ANCHOR LOCATIONS HAVE +/- 1" TOLERANCE.
10. FOR ANCHORING INTO WOOD FRAMING OR 2X BUCK USE #10 FLAT HEAD WOOD SCREWS WITH SUFFICIENT LENGTH TO ACHIEVE A 1 3/8" MINIMUM EMBEDMENT INTO SUBSTRATE WITH 3/4" MINIMUM EDGE DISTANCE. LOCATE ANCHORS AS SHOWN IN ELEVATIONS AND INSTALLATION DETAILS. ANCHOR LOCATIONS HAVE +/- 1" TOLERANCE.
11. FOR ANCHORING INTO METAL STRUCTURE USE #10 FLAT HEAD SMS OR SELF DRILLING SCREWS WITH SUFFICIENT LENGTH TO ACHIEVE 3 THREADS MINIMUM BEYOND STRUCTURE INTERIOR WALL WITH 3/4" MINIMUM EDGE DISTANCE. LOCATE ANCHORS AS SHOWN IN ELEVATIONS AND INSTALLATION DETAILS. ANCHOR LOCATIONS HAVE +/- 1" TOLERANCE.
12. ALL FASTENERS TO BE CORROSION RESISTANT.
13. INSTALLATION ANCHORS SHALL BE INSTALLED IN ACCORDANCE WITH ANCHOR MANUFACTURER'S INSTALLATION INSTRUCTIONS AND ANCHORS SHALL NOT BE USED IN SUBSTRATES WITH STRENGTHS LESS THAN THE MINIMUM STRENGTH SPECIFIED BELOW:
  - 13.1. WOOD - MINIMUM SPECIFIC GRAVITY OF G=0.42
  - 13.2. CONCRETE - MINIMUM COMPRESSIVE STRENGTH OF 2500 PSI
  - 13.3. MASONRY - STRENGTH CONFORMANCE TO ASTM C-90, MEDIUM WEIGHT WITH DENSITY > 117 PCF
  - 13.4. METAL STRUCTURE: STEEL 18GA (0.0428"), 33KSI OR ALUMINUM 6063-T5 0.048" THICK MINIMUM



- NOTES:**
1. MAXIMUM TOP SASH SIZE: 49.063" X 37.188"; MAXIMUM BOTTOM SASH SIZE: 50" X 37"
  2. MAXIMUM TOP SASH D.L.O.: 45.563" X 33.375"; MAXIMUM BOTTOM SASH D.L.O.: 46.813" X 33.188"
  3. 0.938" X 0.25" WEEP HOLE AT 1" FROM EACH END OF EXTERIOR SILL FACE.
  4. 1.27" X 0.3" WEEP HOLE AT 3.625" FROM EACH END OF EXTERIOR SILL FACE.
  5. 0.375" X 0.375" WEEP HOLE AT EACH END OF INTERIOR SILL TRACK.

TABLE OF CONTENT	
SHEET	DESCRIPTION
1	ELEVATION, ANCHORING AND NOTES
2	INSTALLATION DETAILS
3	BILL OF MATERIALS

DESIGN PRESSURE RATING (PSF)	IMPACT RATING
+50.0/-50.0	NONE

PROJECT #418-1001

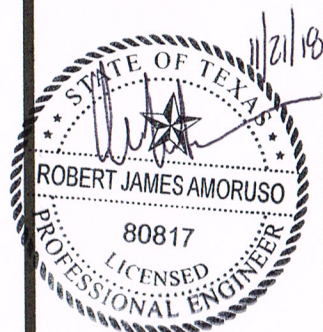
**REGENCY PLUS, INC.**  
 2000 LOCUST GAP HIGHWAY  
 MT. CARMEL, PA 17851

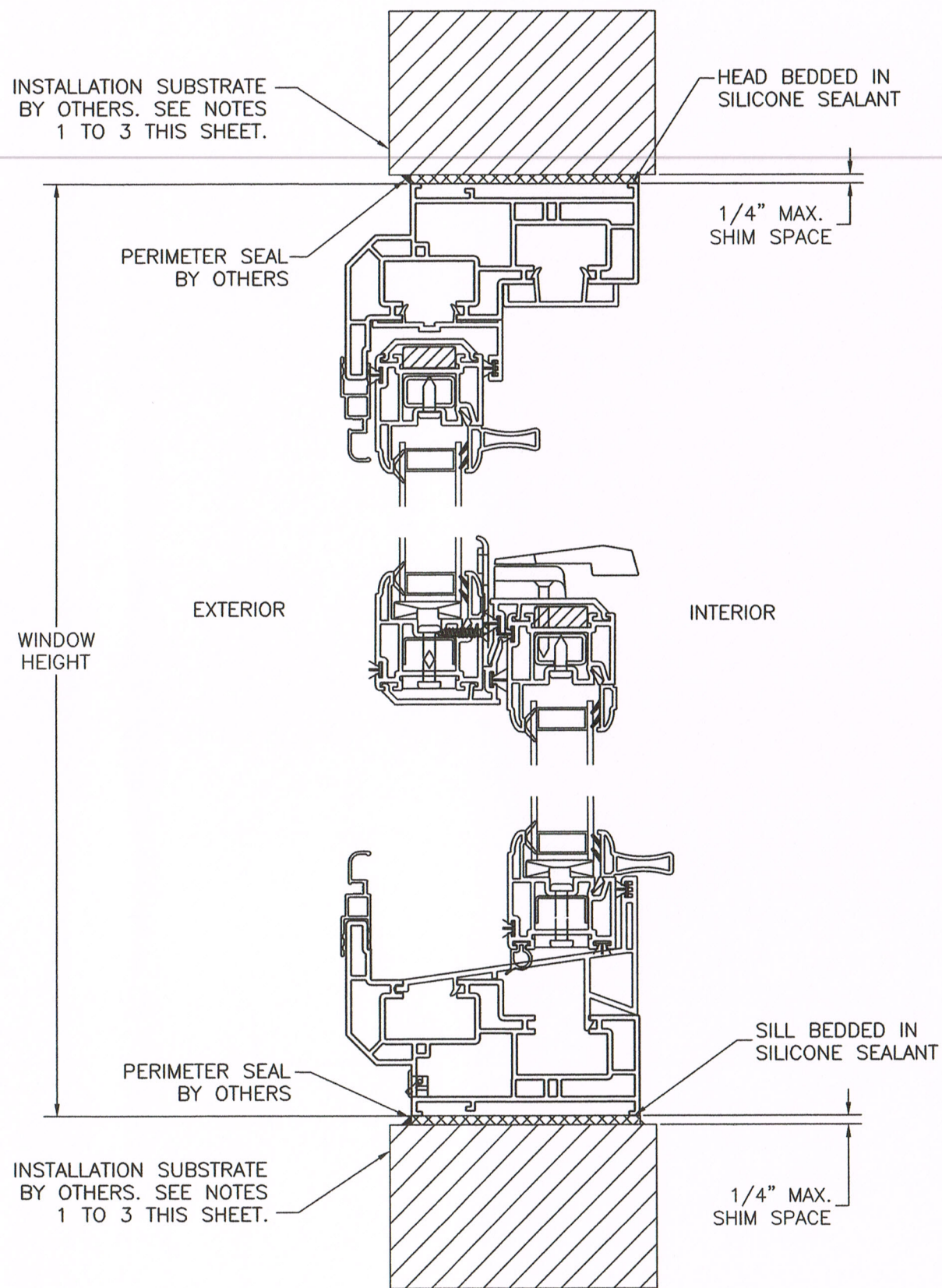
TITLE: SERIES 8313 VINYL TILT DOUBLE HUNG WINDOW  
 ELEVATION, ANCHORING AND NOTES

DRAWN BY: RJA  
 SCALE: N.T.S.  
 DATE: 11/14/18  
 DRAWING NO: RPLS1076  
 SHEET: 1 OF 3

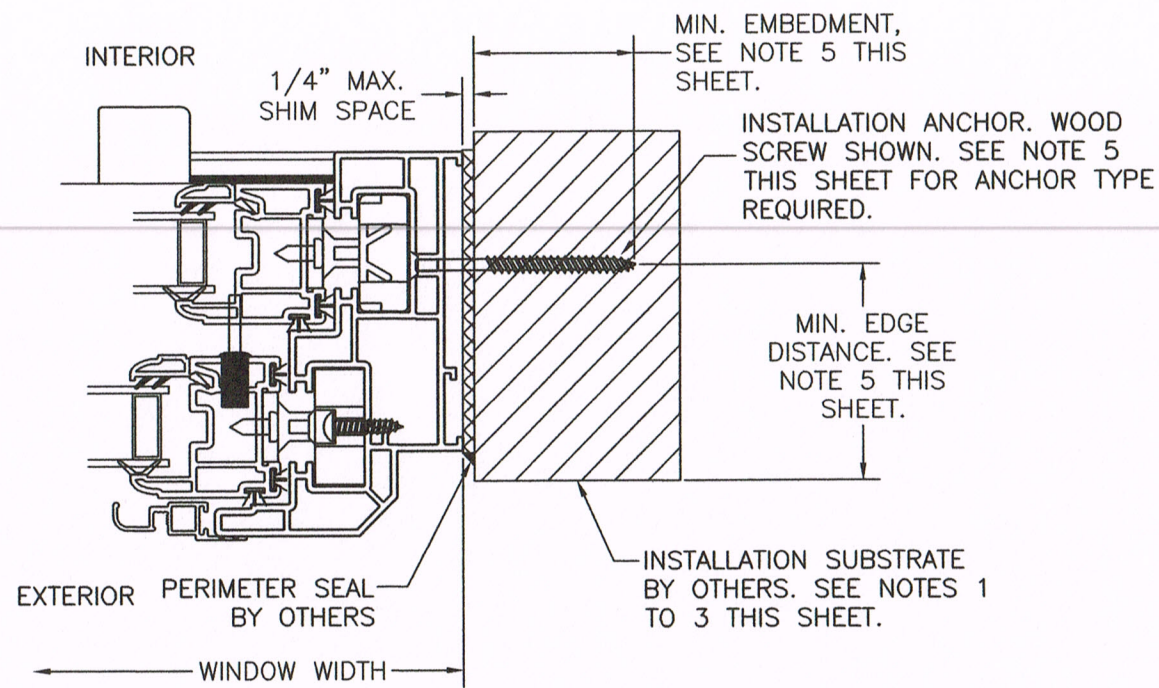
PREPARED BY: **PTC**

Robert J. Amoruso, P.E.  
Texas P.E. No. 80817





**VERTICAL CROSS SECTION**  
 WOOD FRAMING, 2X WOOD BUCK,  
 CONCRETE/MASONRY OR METAL FRAME  
 APPROVED



**HORIZONTAL (JAMB) CROSS SECTION**  
 WOOD FRAMING, 2X WOOD BUCK,  
 CONCRETE/MASONRY OR METAL FRAME  
 APPROVED

**INSTALLATION NOTES:**

1. APPROVED INSTALLATION SUBSTRATES INCLUDE THE FOLLOWING:
  - 1.1. WOOD FRAMING
  - 1.2. STEEL STUD FRAMING AND
  - 1.3. CONCRETE AND/OR MASONRY
2. SUBSTRATE OPENING TO BE DESIGNED AND ANCHORED TO PROPERLY TRANSFER ALL LOADS TO STRUCTURE. FRAMING AND CONCRETE/MASONRY OPENING IS THE RESPONSIBILITY OF THE ARCHITECT OR ENGINEER OF RECORD.
3. 1X BUCK OVER CONCRETE/MASONRY IS OPTIONAL. WHERE 1X BUCK IS NOT USED, DISSIMILAR MATERIALS MUST BE SEPARATED WITH APPROVED COATING OR MEMBRANE. SELECTION OF COATING OR MEMBRANE IS THE RESPONSIBILITY OF THE ARCHITECT OR ENGINEER OF RECORD.
4. SHIM AS REQUIRED AT EACH INSTALLATION ANCHOR WITH LOAD BEARING SHIM. SHIM WHERE SPACE OF 1/16" OR GREATER OCCURS. MAXIMUM ALLOWABLE SHIM STACK TO BE 1/4".
5. SUBSTRATE ANCHORING METHODS:
  - 5.1. FOR ANCHORING INTO CONCRETE/MASONRY USE 3/16" FLAT HEAD TAPCONS WITH SUFFICIENT LENGTH TO ACHIEVE A 1 1/2" MINIMUM EMBEDMENT INTO CONCRETE WITH 1 1/8" MINIMUM EDGE DISTANCE AND 1" MINIMUM EMBEDMENT INTO MASONRY WITH 2" MINIMUM EDGE DISTANCE. LOCATE ANCHORS AS SHOWN IN ELEVATIONS AND INSTALLATION DETAILS. ANCHOR LOCATIONS HAVE +/- 1" TOLERANCE.
  - 5.2. FOR ANCHORING INTO WOOD FRAMING OR 2X BUCK USE #10 FLAT HEAD WOOD SCREWS WITH SUFFICIENT LENGTH TO ACHIEVE A 1 3/8" MINIMUM EMBEDMENT INTO SUBSTRATE WITH 3/4" MINIMUM EDGE DISTANCE. LOCATE ANCHORS AS SHOWN IN ELEVATIONS AND INSTALLATION DETAILS. ANCHOR LOCATIONS HAVE +/- 1" TOLERANCE.
  - 5.3. FOR ANCHORING INTO METAL STRUCTURE USE #10 FLAT HEAD SMS OR SELF DRILLING SCREWS WITH SUFFICIENT LENGTH TO ACHIEVE 3 THREADS MINIMUM BEYOND STRUCTURE INTERIOR WALL WITH 3/4" MINIMUM EDGE DISTANCE. LOCATE ANCHORS AS SHOWN IN ELEVATIONS AND INSTALLATION DETAILS. ANCHOR LOCATIONS HAVE +/- 1" TOLERANCE.
6. INTERIOR AND EXTERIOR FINISHES BY OTHERS. NOT SHOWN FOR CLARITY.
7. PERIMETER AND JOINT SEALANT BY OTHERS TO BE DESIGNED AND/OR SPECIFIED IN ACCORDANCE WITH ASTM E2112.

PROJECT #418-1001	DESCRIPTION	DATE	BY

REGENCY PLUS, INC.  
 2000 LOCUST GAP HIGHWAY  
 MT. CARMEL, PA 17851

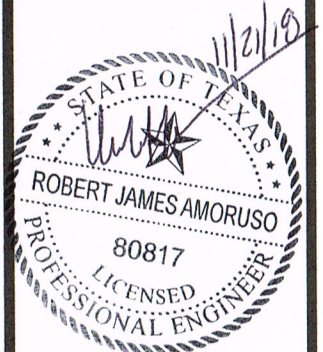
TITLE: SERIES 8313 VINYL TILT DOUBLE HUNG WINDOW  
 INSTALLATION DETAILS

DATE: 11/14/18  
 DRAWING NO: RPLS1076  
 SHEET: 2 OF 3

DRAWN BY: RJA  
 SCALE: N.T.S.  
 REV: -

PREPARED BY: **PTC**

Robert J. Amoroso, P.E.  
 Texas P.E. No. 80817



# BILL OF MATERIALS

Series Tech 8313 Non-Impact Double Hung / Bill of Material			
Supplier	Part Numbers	Description	Quantity
Energi / Royal	IV White 1060 / 7720	Master Frame (H)	2
Energi / Royal	IV White 1060 / 7720	Master Frame (W)	2
Energi / Royal	IV White 1282 / 7750	Sash Frame (Operating Sash) / (H)	4
Energi / Royal	IV White 1282 / 7750	Sash Frame (Operating Sash) / (W)	4
Energi / Royal	IV White 1067 / 7745	Glazing Bead Stop (Operating Sashes) / (H)	4
Energi / Royal	IV White 1067 / 7745	Glazing Bead Stop (Operating Sashes) / (W)	2
Energi / Royal	IV White 1068 / 7747	Glazing Lifrail Handle (Operating Sashes) / (W)	2
Energi / Royal	IV White 1073 / 7724	Pocket Cover Head / (W)	1
Energi / Royal	IV White 1078 / 7725	Sash Cover Head (Keeper Sash) / (W)	1
Energi / Royal	IV White 1180 / 7727	Interlock Cover (Operating Sashes) / (W)	2
Energi / Royal	IV White 1070 / 7736	Sash Stop Frame Cover / (H)	2
Energi / Royal	IV White 1070 / 7736	Sash Stop Frame Cover Head / (W)	1
Energi / Royal	IV White 1181 / 7738	Sloped Sill / (W)	1
Ultra-Fab	W23303NW0000	.210 x .300 Fin Seal Pocket Cover (W) / 1073 / 7724 / Frame Head	1
Ultra-Fab	W23303NW0000	.210 x .300 Fin Seal Pocket Cover (W) / 1181 / 7738 / Frame Sill	1
Ultra-Fab	W23303NW0000	.210 x .300 Fin Seal Sash Frame (H) / 1282 / 7750 / Keeper Sash	4
Ultra-Fab	W23303NW0000	.210 x .300 Fin Seal Sash Frame (H) / 1282 / 7750 / Lock Sash	4
Ultra-Fab	W23303NW0000	.210 x .300 Fin Seal Sash Frame (W) / 1282 / 7750 / Lock Sash	1
Ultra-Fab	E20718WN2020	.200 x .340 H-Bulb Seal Sash Frame (W) 1282 / 7750 / Lock Sash	1
Ultra-Fab	W23301NW0000	.187 x .300 Fin Seal Interlock Cover (W) / 1180 / 7727 / Keeper Sash	1
Ultra-Fab	W23301NW0000	.187 x .300 Fin Seal Interlock Cover (W) / 1180 / 7727 / Lock Sash	1
Ultra-Fab	W112257W0000	.270 x .220 Fin Seal Sash Frame (H) / Single Leg Screen Frame	2
Shapes Unlimited	06516NEW192	Single Leg Frame New White	3
Shapes Unlimited	06515NEW192	Double Leg Frame New White	1
Adept	2584	Tension Springs	2
Phifer	3002606	Fiberglass Screen Cloth Charcoal / 60" x 96'	1
Imperial Plastic USA	EX-FLX-Q165-BK	Screen Spline (H / W)	4
Hygrade Metals	CK252X260	Aluminum Corner Keys	4
Hygrade Metals	ST-226-144-0.052	Operating Sash / (W-1) Lock Sash / Impact Lock Top / Heavy Rebar	1
Hygrade Metals	ST-187-144-0.032	Operating Sash / (W-1) Lock Sash / Bottom / Light Rebar	1


Series Tech 8313 Non-Impact Double Hung / Bill of Material			
Supplier	Part Numbers	Description	Quantity
Hygrade Metals	ST-226-144-0.052	Operating Sash / (W-1) Keeper Sash / Impact Lock Top / Heavy Rebar	1
Hygrade Metals	ST-187-144-0.032	Operating Sash / (W-1) Keeper Sash / Bottom / Light rebar	1
Product Design	H-884	Screen Clip Clear	2
Product Design	H-3150	Screen Clip Clear	2
Product Design	H-808WHZ	Weep Hole Cover White	2
RH Products	HH-66 Vinyl Cement	Interlock Cover (Operating Sash) / Lock Sash (W)	1
RH Products	HH-66 Vinyl Cement	Interlock Cover (Operating Sash) / Keeper Sash (W)	1
Amesbury / Truth	803827	27 lb. 3 Coil / 984 Series / Constant Force Balance	4
S.I.L. Plastic	00156-C001	Lifrail End Caps White	4
Smith Staple	BEA 80/10	Stainless Steel Staples 3/8 x 1/2 Sash (W) (H)	20
Lindenmeyr	W0511022	30PP12-18P50-9/16 X1 3/8 X 3 Foam Block	2
Lamatek	21300-00077	.75 White Balance Plug	4
James Spring Wire	CS025	Hurricane Grade Spring	4
Novagard Silicones	02-MX0150010C2	Accessory Parts Installation Translucent	1
Vision Industries	1057A-003-EW	Hurricane Tilt Latch	4
Vision Industries	3220SS-003-EW	Safe Seal Lock	2
Vision Industries	8292A-003-EW	Safe Seal Keeper	2
Vision Industries	6987	Pivot Bars / T-Shaped Head	4
Frank Lowe	2NB-8K-0.125-032-064	Glass Setting Blocks Sash (W) Top / Sash (H)	12
GLF Corporation	112003	# 5/32" Tri-Rivet .040 /275 Grip / Sash Pivot Bars	12
GLF Corporation	137341	# 8-18 x 0.850 Flat Wafer Shoulder / Sash / Hurricane Latch	4
GLF Corporation	120376	# 8 x 1 1/4" Tek White / Locks	4
GLF Corporation	116821	# 6 x 1" Tek White / Keepers	4
GLF Corporation	117595	# 6 x 5/8" Tek / Sash Rebar (H)	12
GLF Corporation	117595	# 6 x 5/8" Tek / Sash Rebar (W)	12
GLF Corporation	120766	# 8 x 3/4" Tek / Pan Head (Balance Shoes)	4
GLF Corporation	116506	# 5 x 3/8" Tek / Screen Clips White	4
GLF Corporation	401168	# 12 x 3" Flat / Installation Screws	10
Cardinal	Double Strength Tempered	Operating Lock Sash / 3.1 T Q366 / 15.8 FED / 3.1 T	1
Cardinal	Double Strength Tempered	Operating Lock Keeper / 3.1 T Q366 / 15.8 FED / 3.1 T	1

PROJECT #418-1001				

**REGENCY PLUS, INC.**  
2000 LOCUST GAP HIGHWAY  
MT. CARMEL, PA 17851

TITLE: SERIES 8313 VINYL TILT DOUBLE HUNG WINDOW  
BILL OF MATERIALS

DRAWN BY: RJA	DATE: 11/14/18
SCALE: N.T.S.	DRAWING NO: RPLS1076
REV: -	SHEET: 3 OF 3



PREPARED BY:

Robert J. Amoruso, P.E.  
Texas P.E. No. 80817

