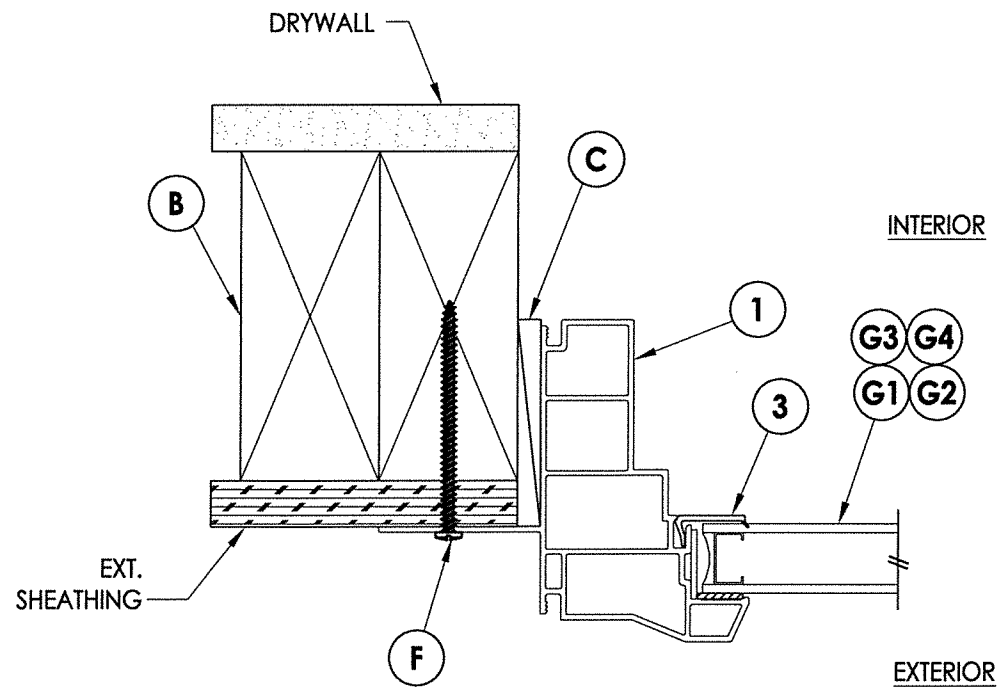
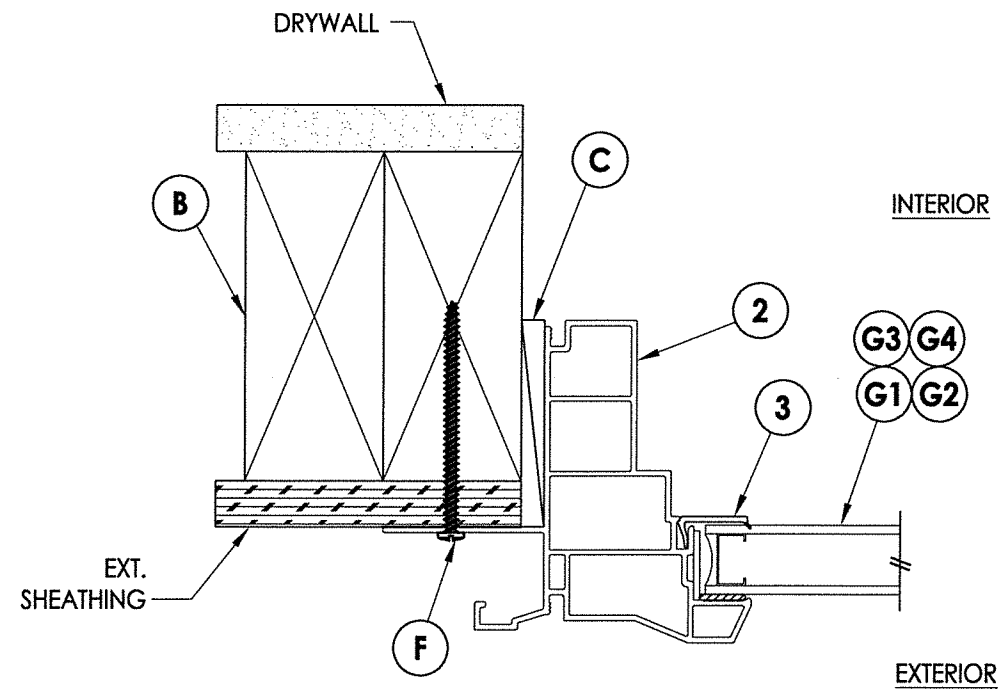


FRAME ANCHORING

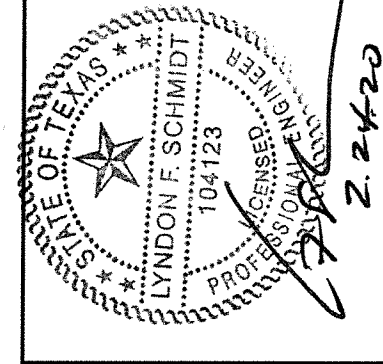
2X FRAMING TO BE DESIGNED BY THE ENGINEER OR ARCHITECT OF RECORD



1 CROSS SECTION
2 Shown w/ 400 Series Frame



1 CROSS SECTION
2 Shown w/ 500 Series Frame w/ J-Channel



Documents Prepared By: Lyndon F. Schmidt, P.E.
TEXAS P.E. #104123

RW BUILDING CONSULTANTS, INC.
P.O. Box 230 Valrico FL 33595
Phone No.: 813.659.9197
TEXAS BOARD OF PROFESSIONAL ENGINEERS
CERTIFICATE OF REGISTRATION # F-11852

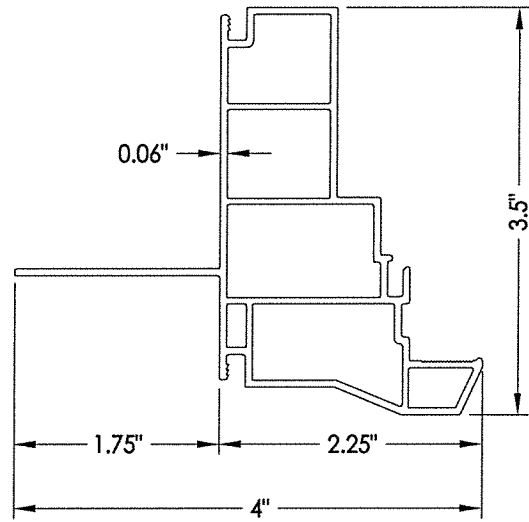
PRODUCT:	400/500 SERIES
PART OR ASSEMBLY:	HORIZONTAL CROSS SECTIONS

NO.	DATE	REVISIONS	LFS	BY
1	1/21/20	UPDATE TO 2018 IBC/IRC		

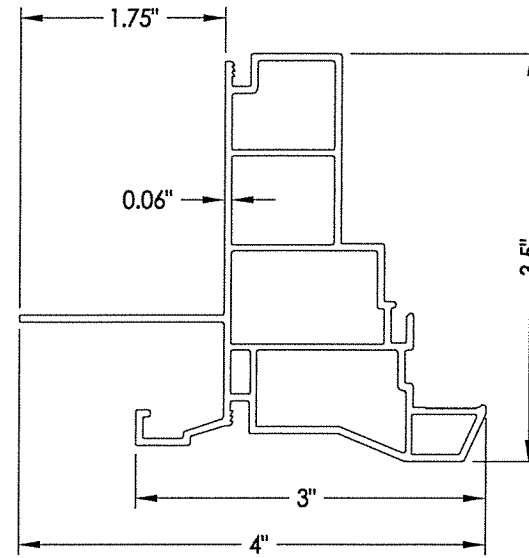
DATE:	9/2/14
SCALE:	N.T.S.
DWG. BY:	JK
CHK. BY:	LFS
DRAWING NO.:	TX-4457
SHEET	2 OF 3

BILL OF MATERIALS		
ITEM #	DESCRIPTION	MATERIAL
B	2X FRAMING (SG >= 0.42)	WOOD
C	1/4" MAX. SHIM SPACE	-
F	#8 X 2-1/2" PPH WOOD SCREW (1-3/4" MIN. EMBEDMENT)	STEEL
1	FRAME (P15401E)*	PVC
2	FRAME (P15401)*	PVC
3	GLAZING BEAD (22841)*	PVC

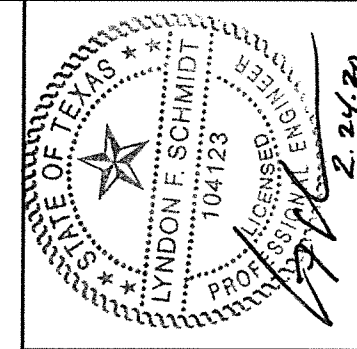
* THE APPROVED WHITE RIGID PVC EXTERIOR EXTRUSIONS FOR WINDOWS ARE TO BE PRODUCED BY EXTRUDERS LICENSEES IN "AAMA CERTIFICATION PROGRAMS FOR RIGID PVC EXTRUSIONS".



1 FRAME (400 Series)



2 FRAME (500 Series w/ J-Channel)



Documents Prepared By: Lyndon F. Schmidt, P.E.
TEXAS P.E. #104123

RW BUILDING CONSULTANTS, INC.
P.O. Box 230 Valrico FL 33595

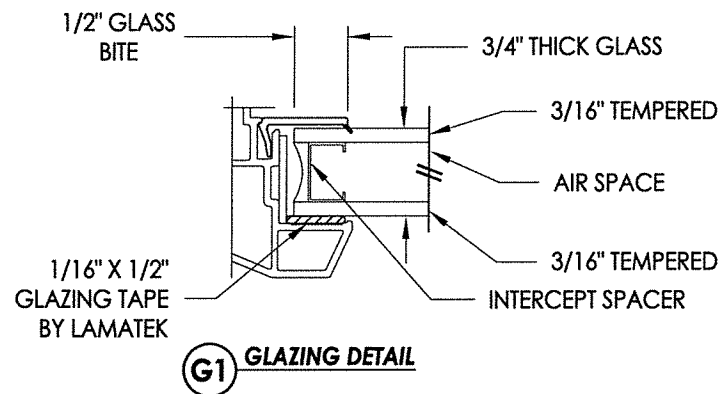
TEXAS BOARD OF PROFESSIONAL ENGINEERS
CERTIFICATE OF REGISTRATION # F-11852

PRODUCT: 400/500 SERIES

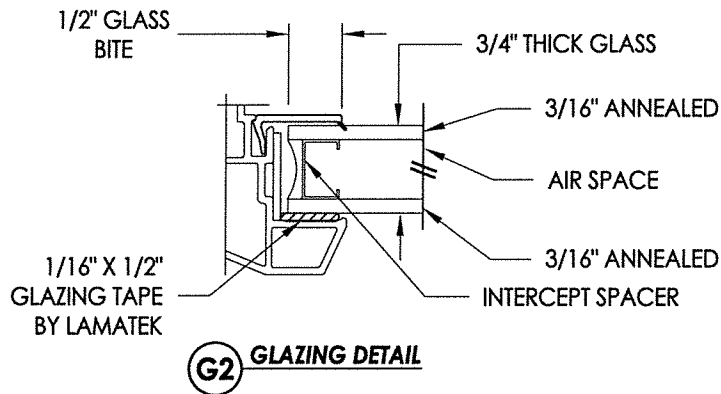
PART OR ASSEMBLY: BILL OF MATERIALS, COMPONENTS AND GLAZING DETAILS

NO.	DATE	BY	REVISIONS
1	1/21/20	LFS	UPDATE TO 2018 IBC/IRC

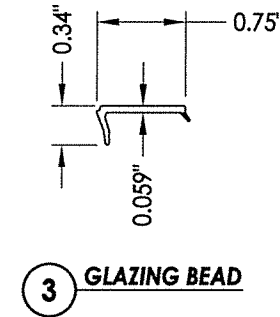
DATE: 9/2/14
SCALE: N.T.S.
DWG. BY: JK
CHK. BY: LFS
DRAWING NO.: TX-4457
SHEET 3 OF 3



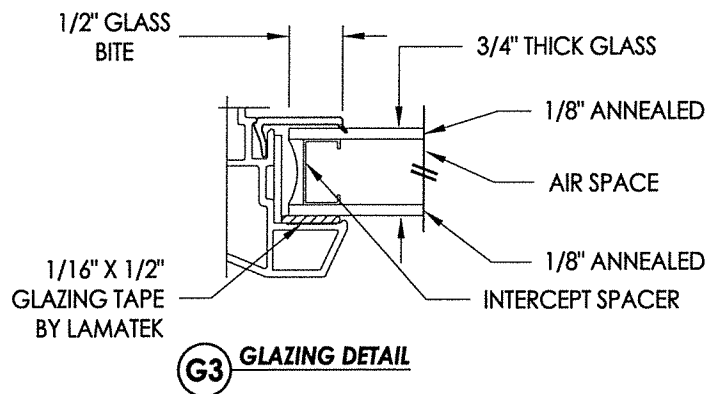
G1 GLAZING DETAIL



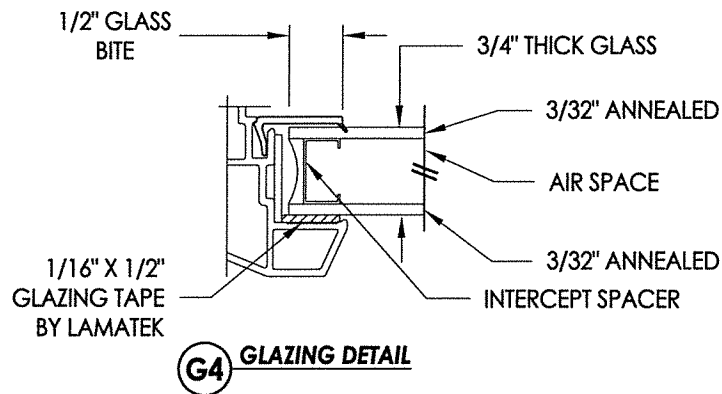
G2 GLAZING DETAIL



3 GLAZING BEAD



G3 GLAZING DETAIL



G4 GLAZING DETAIL