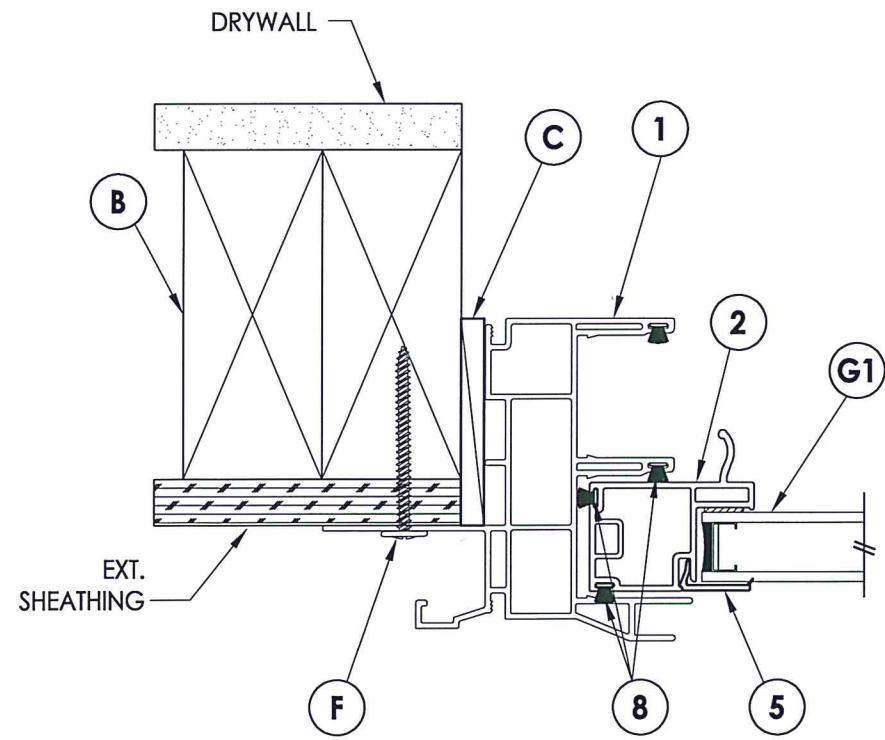
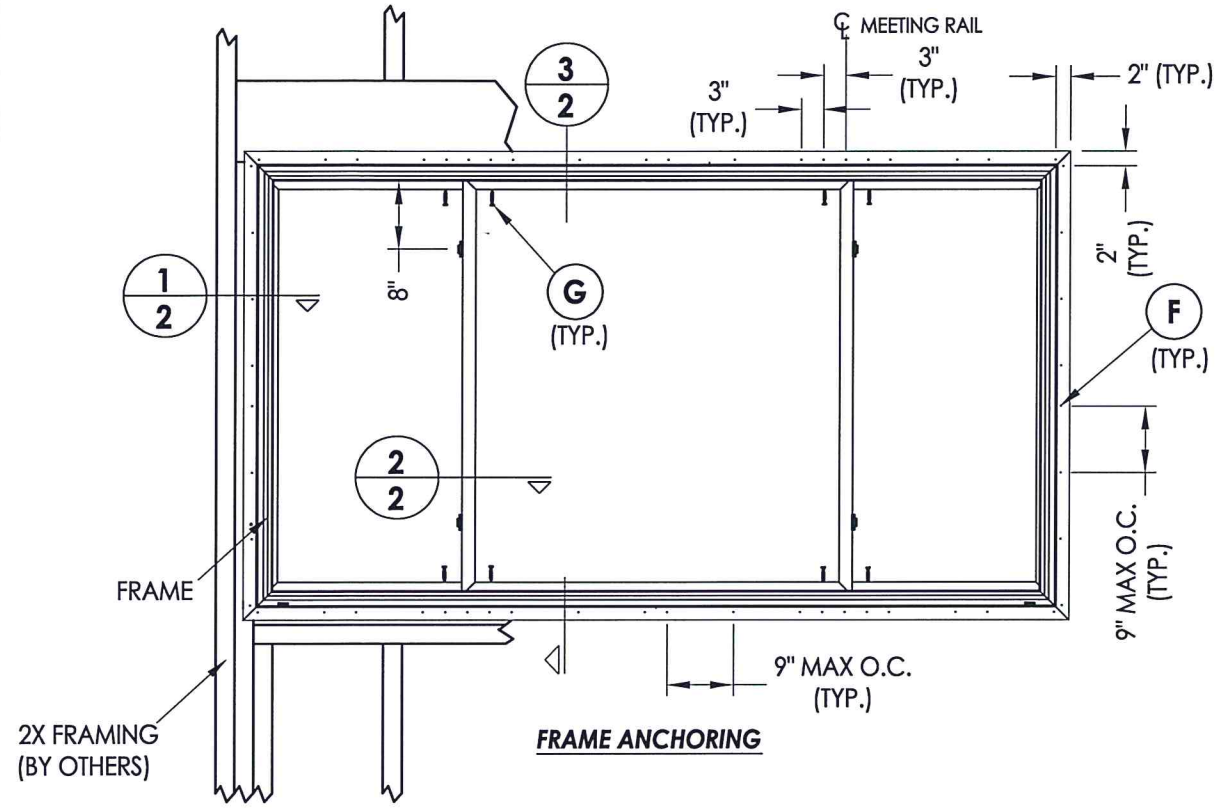
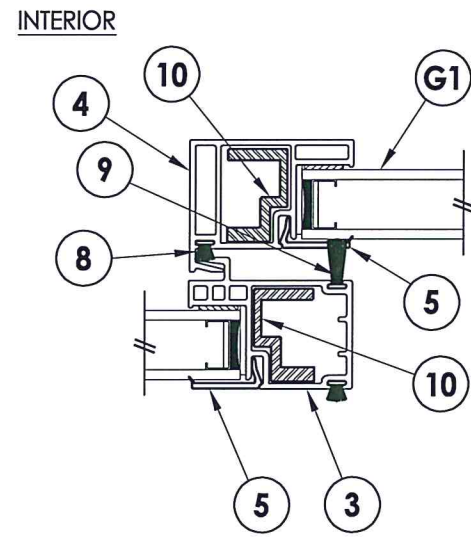


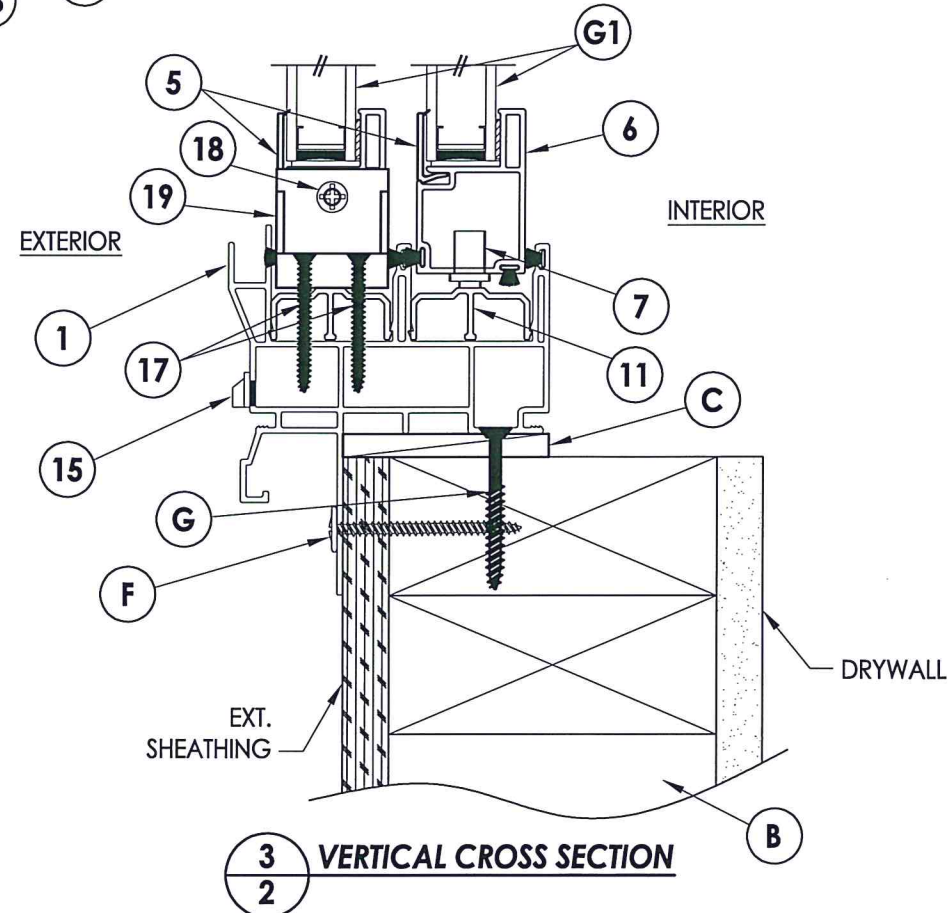
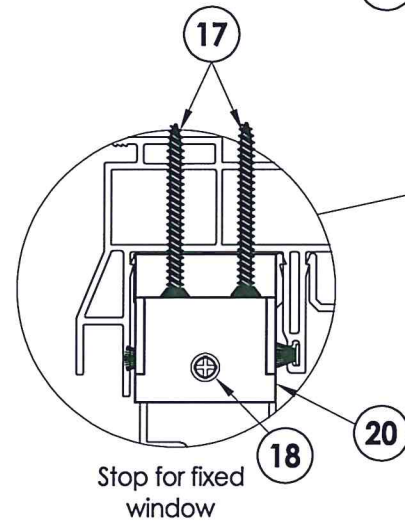
R:\Clients\Wincore PERMANENT\B - (2018) Texas Dept of Ins\WIN 1935 - Horizontal Slider 500\C - Drawings\2018 IBC UPDATE\TX-4405-07.dwg, 1.2



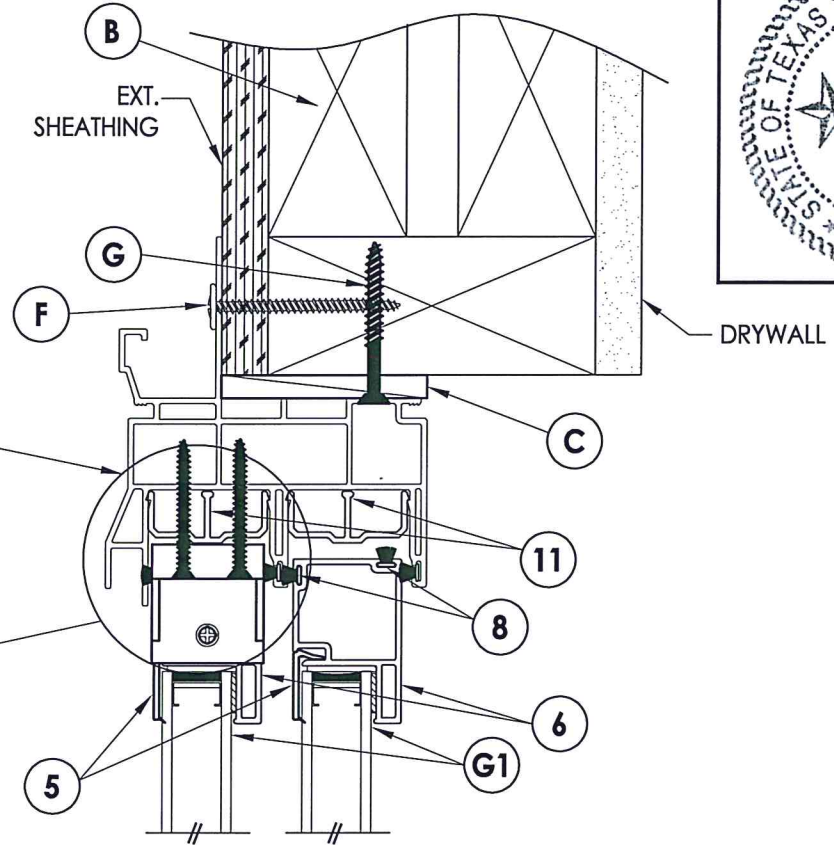
1
2 HORIZONTAL CROSS SECTION



2
2 HORIZONTAL CROSS SECTION



3
2 VERTICAL CROSS SECTION



Documents Prepared By: Lyndon F. Schmidt, P.E.
TEXAS P.E. #104123

RW BUILDING CONSULTANTS, INC.
P.O. Box 230 Vairico FL 33595
Phone No.: 813.659.9197
TEXAS BOARD OF PROFESSIONAL ENGINEERS
CERTIFICATE OF REGISTRATION # F-11852

PRODUCT: 500 SERIES
PART OR ASSEMBLY: HORIZONTAL & VERTICAL CROSS SECTIONS & FRAME ANCHORING

NO.	DATE	REVISIONS	BY
1	1/21/20	UPDATE TO 2018 IBC/IRC	LFS

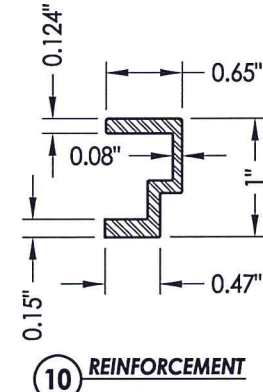
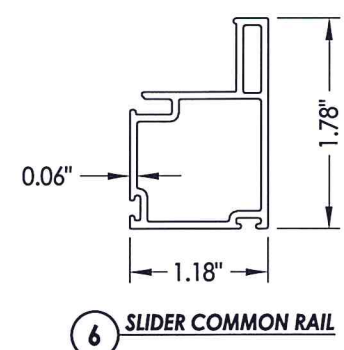
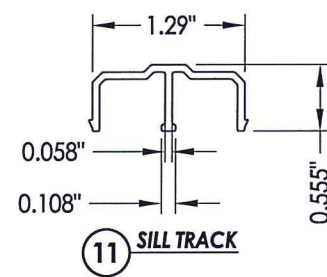
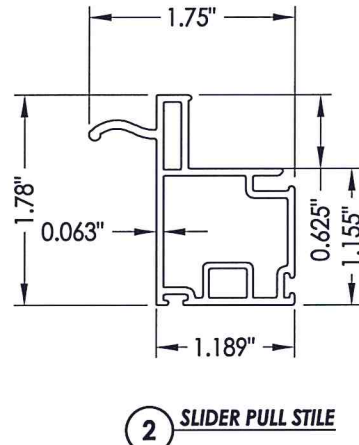
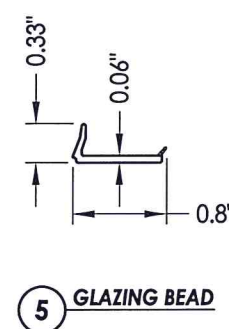
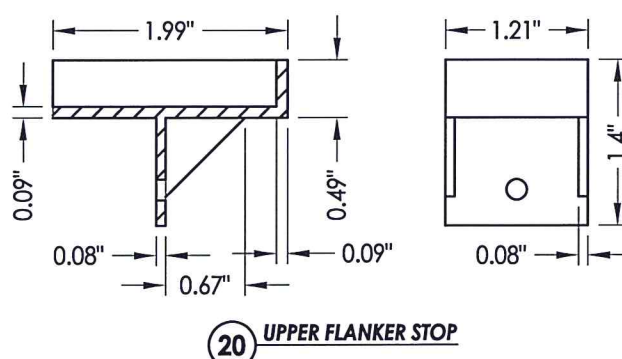
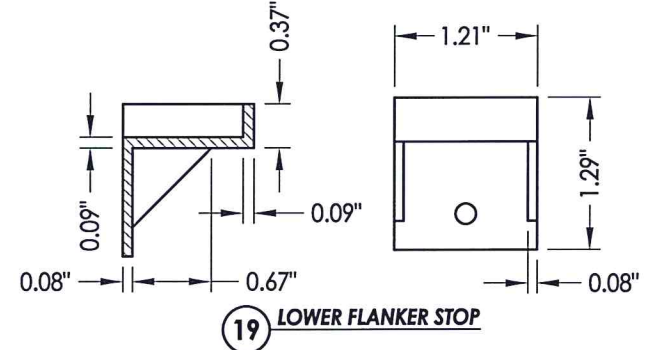
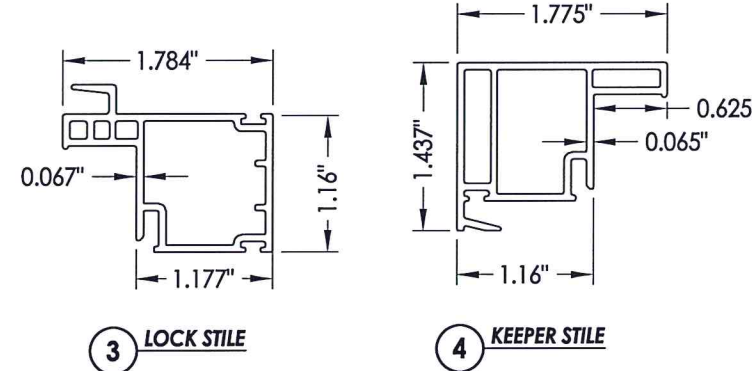
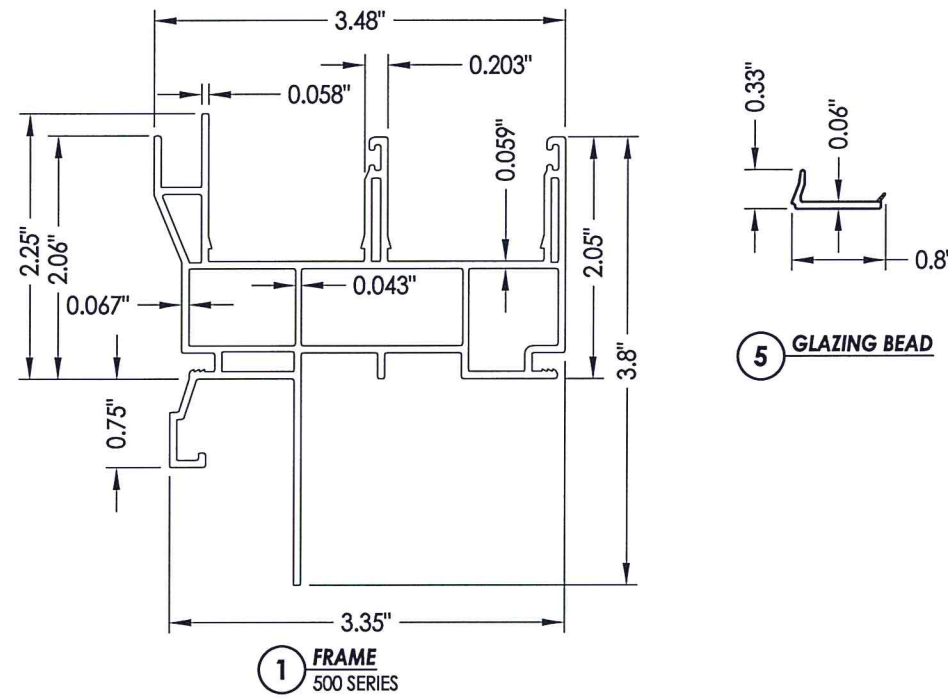
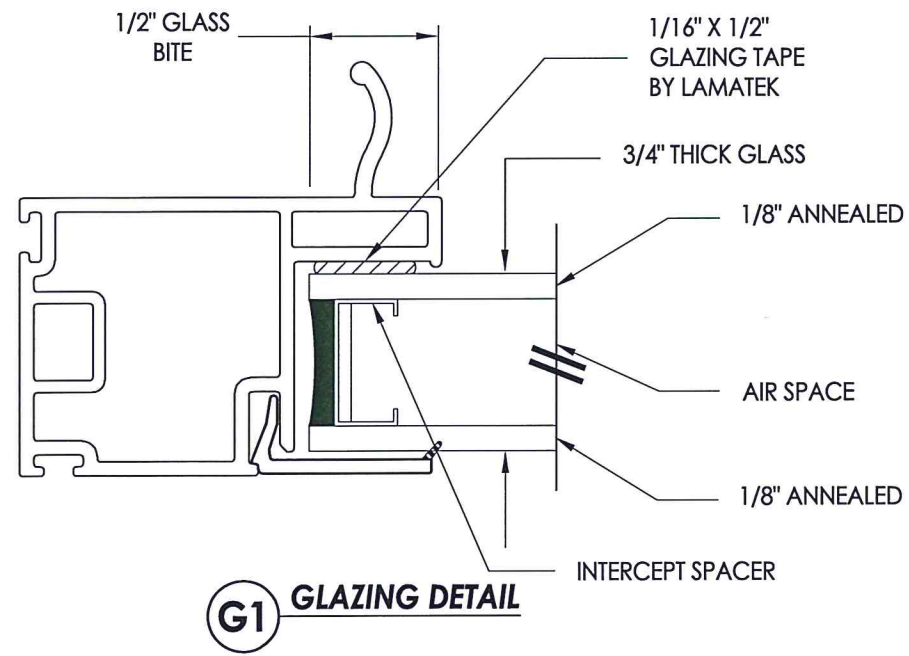
DATE: 11/4/13
SCALE: N.T.S.
DWG. BY: JK
CHK. BY: LFS
DRAWING NO.: TX-4406
SHEET 2 OF 3

© 2013 R.W. BUILDING CONSULTANTS INC.

R:\Clients\Wincore PERMANENT\B - (2018) Texas Dept of Ins\WIN 1935 - Horizontal Slider 500\C - Drawings\2018 IBC UPDATE\TX-4405-07.dwg, 1.3

BILL OF MATERIALS		
ITEM #	DESCRIPTION	MATERIAL
B	2X FRAMING (SG >= 0.42)	WOOD
C	1/4" MAX. SHIM SPACE	-
F	#8 X 2" MODIFIED TRUSS HEAD (7/16" Ø) SMS (1-3/8" MIN. EMBEDMENT)	STEEL
G	#10 X 1-1/2" PFH WOOD SCREW (1-3/8" MIN. EMBEDMENT)	STEEL
1	FRAME (500 SERIES - "J" CHANNEL)*	PVC
2	SLIDER PULL STILE*	PVC
3	LOCK STILE*	PVC
4	KEEPER STILE*	PVC
5	GLAZING BEAD*	PVC
6	SLIDER COMMON RAIL*	PVC
7	METAL ROLLERS w/ PLASTIC HOUSING	-
8	WEATHERSTRIP (0.230")	-
9	WEATHERSTRIP (0.380")	-
10	REINFORCEMENT	ALUM
11	SILL TRACK*	PVC
15	WEEPHOLE CAP*	PVC
17	#8 X 1-1/4" PFH SMS	STEEL
18	#8 X 3/4" PFH WOOD SCREW	STEEL
19	LOWER FLANKER STOP	NYLON
20	UPPER FLANKER STOP	NYLON

* THE APPROVED WHITE RIGID PVC EXTERIOR EXTRUSIONS FOR WINDOWS ARE TO BE PRODUCED BY EXTRUDERS LICENSEES IN "AAMA CERTIFICATION PROGRAMS FOR RIGID PVC EXTRUSIONS".



Documents Prepared By: Lyndon F. Schmidt, P.E.
TEXAS P.E. #104123

RW BUILDING CONSULTANTS, INC.
P.O. Box 230 Valrico FL 33595
Phone No.: 813.659.9197

TEXAS BOARD OF PROFESSIONAL ENGINEERS
CERTIFICATE OF REGISTRATION # F-11852

PRODUCT:	500 SERIES
PART OR ASSEMBLY:	BILL OF MATERIALS, COMPONENTS & GLAZING DETAILS
NO.	1
DATE	1/21/20
UPDATE TO	2018 IBC/IRC
BY	LFS
REVISIONS	
DATE:	11/4/13
SCALE:	N.T.S.
DWG. BY:	JK
CHK. BY:	LFS
DRAWING NO.:	TX-4406
SHEET	3 OF 3

© 2013 R.W. BUILDING CONSULTANTS INC.