

7/29/2020 10:17 AM  
c:\users\ycruz\onedrive - building drops - inc\tdi-20-0704 - tdi submittal - win-1654, dr-387 and win-1175 (revision)\dwg\atr125\atr125.dwg

**INSTALLATION NOTES:**

1. ONE (1) INSTALLATION ANCHOR IS REQUIRED AT EACH ANCHOR LOCATION SHOWN.
2. THE NUMBER OF INSTALLATION ANCHORS DEPICTED IS THE MINIMUM NUMBER OF ANCHORS TO BE USED FOR PRODUCT INSTALLATION OF THE MAXIMUM SIZE LISTED.
3. INSTALL INDIVIDUAL INSTALLATION ANCHORS WITHIN A TOLERANCE OF ±1/2 INCH OF THE DEPICTED LOCATION IN THE ANCHOR LAYOUT DETAIL (I.E., WITHOUT CONSIDERATION OF TOLERANCES). TOLERANCES ARE NOT CUMULATIVE FROM ONE INSTALLATION ANCHOR TO THE NEXT.
4. SHIM AS REQUIRED AT EACH INSTALLATION ANCHOR WITH LOAD BEARING SHIM(S). MAXIMUM ALLOWABLE SHIM STACK TO BE 1/4 INCH. SHIM WHERE SPACE OF 1/16 INCH OR GREATER OCCURS. SHIM(S) SHALL BE CONSTRUCTED OF HIGH DENSITY PLASTIC OR BETTER.
5. FOR NAIL FIN INTO WOOD BUCK: USE #8 WOOD SCREWS THROUGH THE FIN OF SUFFICIENT LENGTH TO ACHIEVE 1 1/2 INCH MINIMUM EMBEDMENT INTO WOOD SUBSTRATE.
6. FOR NAIL FIN INTO STEEL STUD: USE #8 TEK SCREWS GRADE 5 THROUGH THE FIN OF SUFFICIENT LENGTH TO ACHIEVE A MINIMUM OF 3 THREADS PENETRATION BEYOND METAL FRAME SUBSTRATE.
7. FOR THRU FRAME INTO WOOD BUCK: USE #10 WOOD SCREWS THROUGH THE FRAME OF SUFFICIENT LENGTH TO ACHIEVE 1 1/2 INCH MINIMUM EMBEDMENT INTO WOOD SUBSTRATE.
9. FOR THRU FRAME INTO CONCRETE/MASONRY: FOR INSTALLATION THROUGH 1X BUCK TO CONCRETE/MASONRY, OR DIRECTLY INTO CONCRETE/MASONRY, USE 3/16 INCH DIAMETER ITW TAPCONS OF SUFFICIENT LENGTH TO ACHIEVE 1 1/4 INCH MINIMUM EMBEDMENT.
10. FOR THRU FRAME INTO STEEL STUD: USE #10 TEK SCREWS GRADE 5 THROUGH THE FRAME OF SUFFICIENT LENGTH TO ACHIEVE A MINIMUM OF 3 THREADS PENETRATION BEYOND METAL FRAME SUBSTRATE.
11. MINIMUM EMBEDMENT AND EDGE DISTANCE EXCLUDE WALL FINISHES, INCLUDING BUT NOT LIMITED TO STUCCO, FOAM, BRICK VENEER, AND SIDING.
12. INSTALLATION ANCHORS AND ASSOCIATED HARDWARE MUST BE MADE OF CORROSION RESISTANT MATERIAL OR HAVE A CORROSION RESISTANT COATING.
13. FOR HOLLOW BLOCK AND GROUT FILLED BLOCK, DO NOT INSTALL INSTALLATION ANCHORS INTO MORTAR JOINTS. EDGE DISTANCE IS MEASURED FROM FREE EDGE OF BLOCK OR EDGE OF MORTAR JOINT INTO FACE SHELL OF BLOCK.
14. INSTALLATION ANCHORS SHALL BE INSTALLED IN ACCORDANCE WITH ANCHOR MANUFACTURER'S INSTALLATION INSTRUCTIONS, AND ANCHORS SHALL NOT BE USED IN SUBSTRATES WITH STRENGTHS LESS THAN THE MINIMUM STRENGTH SPECIFIED BY THE ANCHOR MANUFACTURER.
15. INSTALLATION ANCHOR CAPACITIES FOR PRODUCTS HEREIN ARE BASED ON SUBSTRATE MATERIALS WITH THE FOLLOWING PROPERTIES:
  - A. WOOD - MINIMUM SPECIFIC GRAVITY OF 0.42.
  - B. CONCRETE -MINIMUM COMPRESSIVE STRENGTH OF 3000 PSI.
  - C. GROUT-FILLED CMU- UNIT STRENGTH CONFORMS TO ASTM C-90 WITH MINIMUM COMPRESSIVE STRENGTH OF 2000 PSI AND GROUT CONFORMS TO ASTM C 476, MINIMUM GROUT COMPRESSIVE STRENGTH OF 2000 PSI.
  - D. HOLLOW BLOCK CMU - UNIT STRENGTH CONFORMS TO ASTM C-90 WITH MINIMUM COMPRESSIVE STRENGTH OF 2000 PSI.
  - E. STEEL - MINIMUM YIELD STRENGTH OF 33 KSI. MINIMUM 20 GA. WALL THICKNESS.

# ATRIUM CORPORATION

## SERIES 700/720/750/760

# CASEMENT WINDOW, X, XX, XOX & XOOX (NON-IMPACT)

**GENERAL NOTES:**

1. THE PRODUCT SHOWN HEREIN IS DESIGNED AND MANUFACTURED TO COMPLY WITH THE 2018 INTERNATIONAL BUILDING CODE AND THE 2018 INTERNATIONAL RESIDENTIAL CODE AND HAS BEEN EVALUATED ACCORDING TO THE FOLLOWING:
  - AAMA/WDMA/CSA101/I.S.2/A440-17
2. ADEQUACY OF THE EXISTING STRUCTURAL CONCRETE/MASONRY AND 2X FRAMING AS A MAIN WIND FORCE RESISTING SYSTEM CAPABLE OF WITHSTANDING AND TRANSFERRING APPLIED PRODUCT LOADS TO THE FOUNDATION IS THE RESPONSIBILITY OF THE ENGINEER OR ARCHITECT OF RECORD FOR THE PROJECT OF INSTALLATION.
3. 1X AND 2X BUCKS (WHEN USED) SHALL BE DESIGNED AND ANCHORED TO PROPERLY TRANSFER ALL LOADS TO THE STRUCTURE. BUCK DESIGN AND INSTALLATION IS THE RESPONSIBILITY OF THE ENGINEER OR ARCHITECT OF RECORD FOR THE PROJECT OF INSTALLATION.
4. THE INSTALLATION DETAILS DESCRIBED HEREIN ARE GENERIC AND MAY NOT REFLECT ACTUAL CONDITIONS FOR A SPECIFIC SITE. IF SITE CONDITIONS CAUSE INSTALLATION TO DEVIATE FROM THE REQUIREMENTS DETAILED HEREIN, A LICENSED ENGINEER OR ARCHITECT SHALL PREPARE SITE SPECIFIC DOCUMENTS FOR USE WITH THIS DOCUMENT IN NON-HVHZ AREAS.
5. APPROVED IMPACT PROTECTIVE SYSTEM **IS REQUIRED** ON THIS PRODUCT IN AREAS REQUIRING IMPACT RESISTANCE.
6. WINDOW FRAME MATERIAL: PVC
7. GLASS SHALL MEET THE REQUIREMENTS OF ASTM E 1300. SEE SHEET 5 FOR GLAZING DETAIL.
8. PRODUCT MAY BE MULLED USING AN APPROVED MULLION.

TABLE OF CONTENTS		
SHEET	REV.	SHEET DESCRIPTION
1	A	GENERAL & INSTALLATION NOTES
2	A	X ELEVATION & ANCHOR LAYOUTS
3	A	XX ELEVATION & ANCHOR LAYOUTS
4	A	XOX ELEVATION & ANCHOR LAYOUTS
5	A	XOOX ELEVATION & ANCHOR LAYOUTS
6	A	VERTICAL SECTIONS & GLAZING DETAIL
7	A	HORIZONTAL SECTIONS
8	A	HORIZONTAL SECTIONS

OVERALL SIZE		CERTIFIED CONFIGURATION	QUALIFIED QUANFIGURATIONS	DESIGN PRESSURE	IMPACT RATING
WIDTH	HEIGHT				
120"	72"	XOOX	XOX, XO & OX	+/- 35 PSF	NI
90"	72"	XOX	XO & OX	+/- 35 PSF	NI
72"	72"	XX	XX	+/- 50 PSF	NI
36"	72"	X	X	+/- 50 PSF	NI

**NOTE:**

1. THE VENT WIDTH OF THE QUALIFIED CONFIGURATIONS SHOULD BE EQUAL TO OR LESS THAN THE VENT WIDTH OF THE CERTIFIED CONFIGURATION.
2. CONFIGURATIONS ARE HINGED OF THE JAMB.

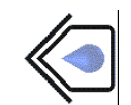


ATRIUM CORPORATION  
9001 AMBASSADOR ROW  
DALLAS, TX 75247  
PH: (214) 637-2696 FAX: (214) 424-6734

TITLE: SERIES 700/720/750/760  
CASEMENT WINDOW  
X,XX,XOX,XOOX

GENERAL AND  
INSTALLATION NOTES

PREPARED BY:  
**BUILDING DROPS, INC.**  
398 E. DANIA BEACH BLVD., STE. 338  
DANIA BEACH, FL 33004  
PH: (954) 399-8478  
FAX: (954) 744-4738  
WEB: www.buildingdrops.com



REMARKS	BY	DATE
TESTING UPDATE	SM	07/14
CODE CHANGE	YC	07/20

THE INSTALLATION DETAILS DESCRIBED HEREIN ARE GENERIC AND MAY NOT REFLECT ACTUAL CONDITIONS FOR A SPECIFIC SITE. IF SITE CONDITIONS CAUSE INSTALLATION TO DEVIATE FROM THE REQUIREMENTS DETAILED HEREIN, A LICENSED ENGINEER OR ARCHITECT SHALL PREPARE SITE SPECIFIC DOCUMENTS FOR USE WITH THIS DOCUMENT.



HERMES F. NORERO, P.E.  
TEXAS P.E. No 113471  
BUILDING DROPS, INC  
398 E. DANIA BEACH BLVD. # 338  
DANIA BEACH, FL 33004  
TBPE CERT. OF AUTHORIZATION NO. 13734

DATE: **07.20.2020**

DWG. BY: <b>SM</b>	CHK. BY: <b>HFN</b>
--------------------	---------------------

SCALE: **NTS**

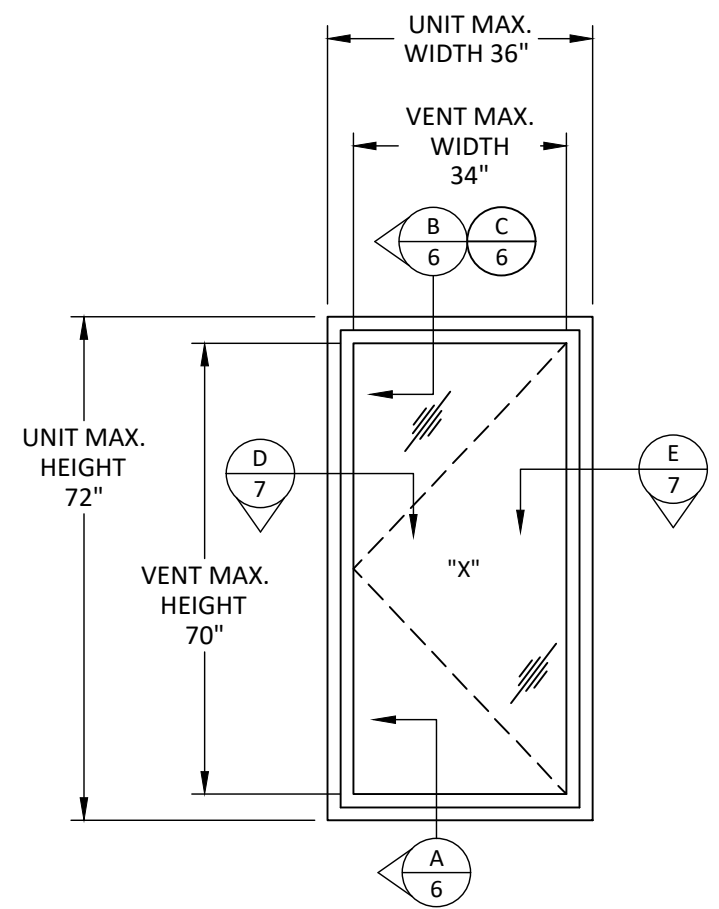
DWG. #: **ATR125**

SECTION: **1**

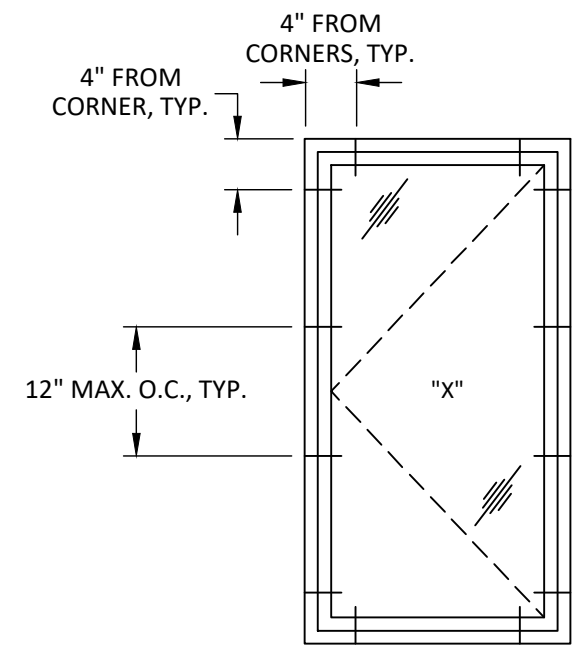
OF 8

7/29/2020 10:17 AM

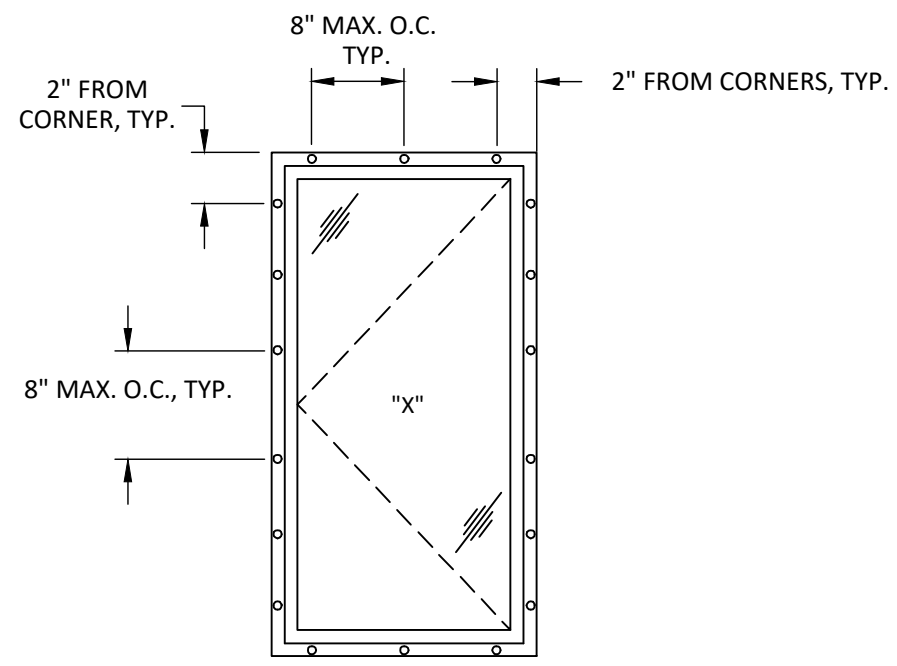
c:\users\ycruz\onedrive - building drops, inc\tdi-20-0704 - tdi submittal - win-1654, dr-387 and win-1175 (revision)\dwgs\atr125\atr125.dwg



**TYPICAL ELEVATION**  
X UNIT



**ANCHOR LAYOUT**  
X UNIT- THROUGH FRAME



**ANCHOR LAYOUT**  
X UNIT- NAILING FIN

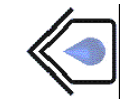


ATRIUM CORPORATION  
9001 AMBASSADOR ROW  
DALLAS, TX 75247  
PH: (214) 637-2696 FAX: (214) 424-6734

TITLE: SERIES 700/720/750/760  
CASEMENT WINDOW  
X,XX,XOX,XOXX

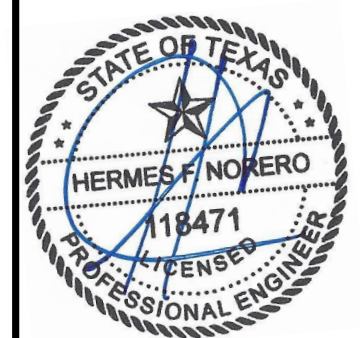
X ELEVATION AND  
ANCHOR LAYOUTS

PREPARED BY:  
**BUILDING DROPS, INC.**  
398 E. DANIA BEACH BLVD., STE. 338  
DANIA BEACH, FL 33004  
PH: (954)399-8478  
FAX: (954)744-4738  
WEB: www.buildingdrops.com



REMARKS	BY	DATE
TESTING UPDATE	SM	07/14
CODE CHANGE	YC	07/20

THE INSTALLATION DETAILS DESCRIBED HEREIN ARE GENERIC AND MAY NOT REFLECT ACTUAL CONDITIONS FOR A SPECIFIC SITE. IF SITE CONDITIONS CAUSE INSTALLATION TO DEVIATE FROM THE REQUIREMENTS DETAILED HEREIN, A LICENSED ENGINEER OR ARCHITECT SHALL PREPARE SITE SPECIFIC DOCUMENTS FOR USE WITH THIS DOCUMENT.



HERMES F. NORERO, P.E.  
TEXAS P.E. No 113471  
BUILDING DROPS, INC  
398 E. DANIA BEACH BLVD. # 338  
DANIA BEACH, FL 33004  
TBPE CERT. OF AUTHORIZATION NO. 13734

DATE: 07.20.2020

DWG. BY: SM      CHK. BY: HFN

SCALE: NTS

DWG. #: ATR125

SECTION:

2

OF 8

TITLE: SERIES 700/720/750/760  
CASEMENT WINDOW  
X,XX,XXX,XXXX

PREPARED BY:  
BUILDING DROPS, INC.  
398 E. DANIA BEACH BLVD., STE. 338  
DANIA BEACH, FL 33004  
PH: (954) 399-8478  
FAX: (954) 744-4738  
WEB: www.buildingdrops.com

REMARKS	BY	DATE
TESTING UPDATE	SM	07/14
CODE CHANGE	YC	07/20

THE INSTALLATION DETAILS DESCRIBED HEREIN ARE GENERIC AND MAY NOT REFLECT ACTUAL CONDITIONS FOR A SPECIFIC SITE. IF SITE CONDITIONS CAUSE INSTALLATION TO DEVIATE FROM THE REQUIREMENTS DETAILED HEREIN, A LICENSED ENGINEER OR ARCHITECT SHALL PREPARE SITE SPECIFIC DOCUMENTS FOR USE WITH THIS DOCUMENT.



HERMES F. NORERO, P.E.  
TEXAS P.E. No 113471  
BUILDING DROPS, INC  
398 E. DANIA BEACH BLVD. # 338  
DANIA BEACH, FL 33004  
TBPE CERT. OF AUTHORIZATION NO. 13734

DATE: 07.20.2020

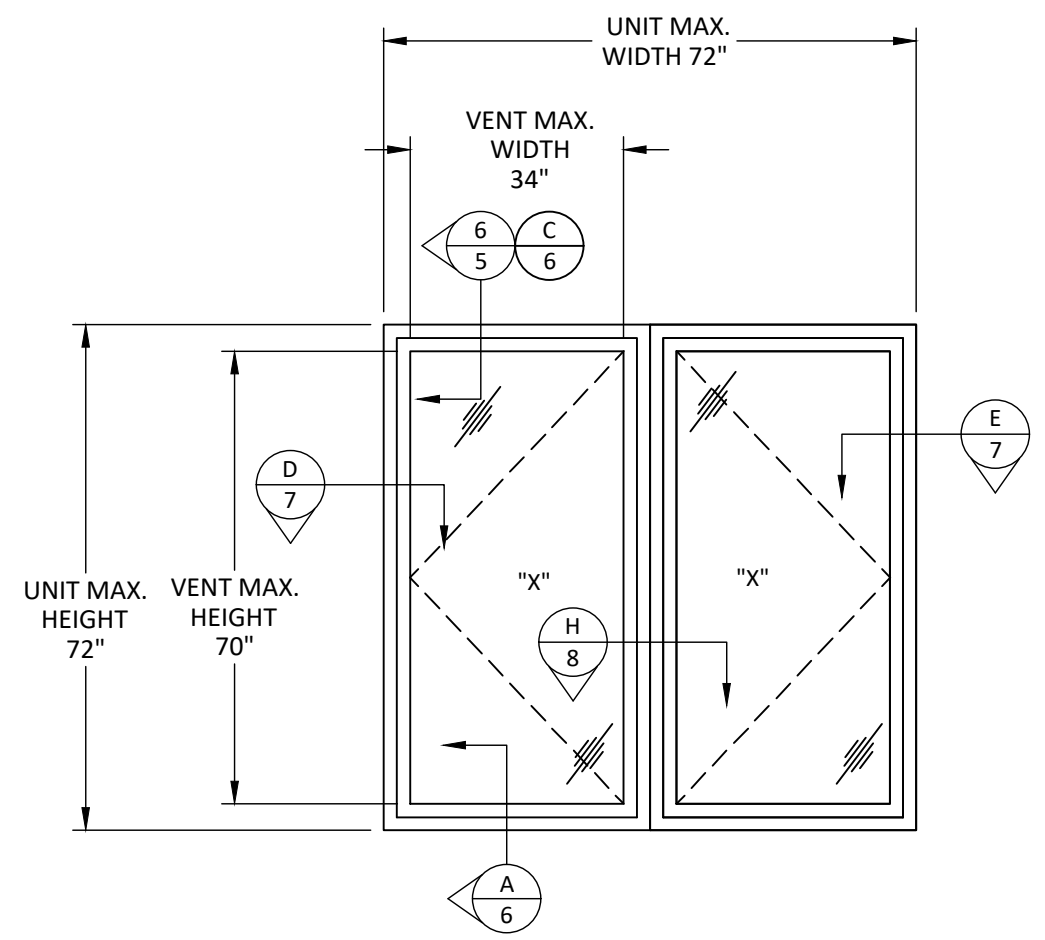
DWG. BY: SM      CHK. BY: HFN

SCALE: NTS

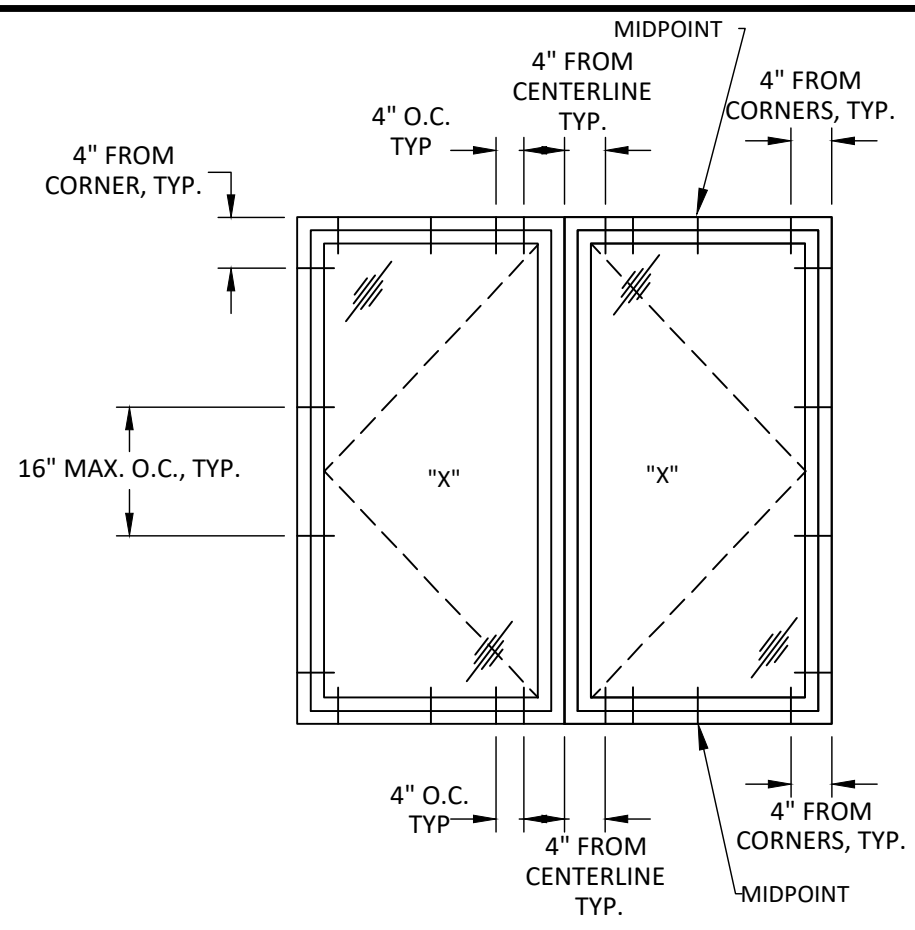
DWG. #: ATR125

SECTION:

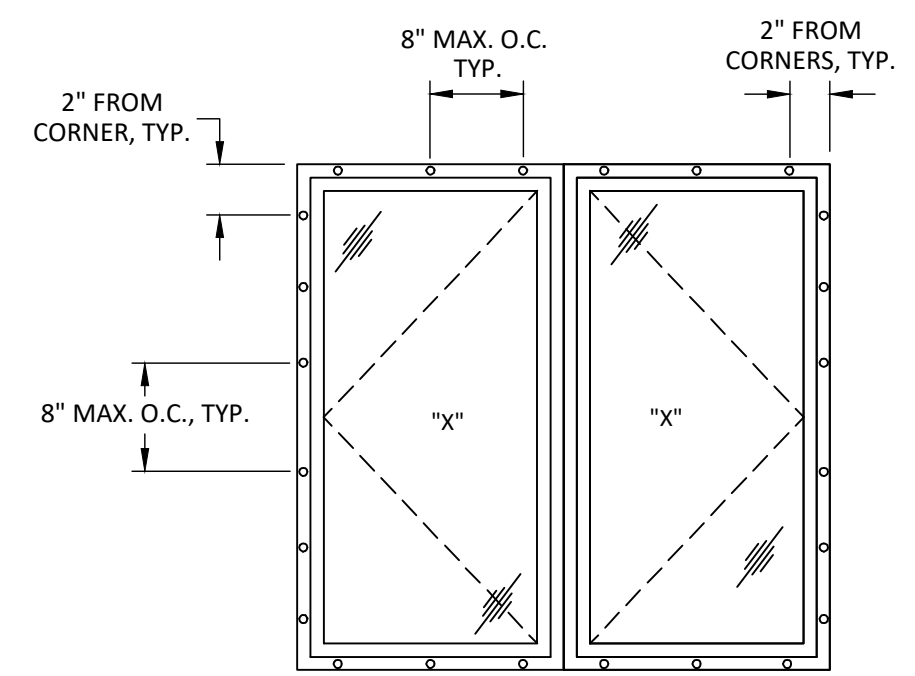
3



**TYPICAL ELEVATION**  
XX UNIT



**ANCHOR LAYOUT**  
XX UNIT - THROUGH FRAME



**ANCHOR LAYOUT**  
XX UNIT - NAILING FIN

c:\users\ycruz\onedrive - building\_drops, inc\tdf-20-0704 - tdi submittal - win-1654, dr-387 and win-1175 (revision)\dwgs\atr125\atr125.dwg 7/29/2020 10:17 AM



ATRIUM CORPORATION  
9001 AMBASSADOR ROW  
DALLAS, TX 75247  
PH: (214) 637-2696 FAX: (214) 424-6734

TITLE: SERIES 700/720/750/760  
CASEMENT WINDOW  
X,XX,XOX,XOXX

XOX ELEVATION AND  
ANCHOR LAYOUTS

PREPARED BY:  
BUILDING DROPS, INC.

398 E. DANIA BEACH BLVD., STE. 338  
DANIA BEACH, FL 33004  
PH: (954)395-8478  
FAX: (954)744-4738  
WEB: www.buildingdrops.com



REMARKS	BY	DATE
TESTING UPDATE	SM	07/14
CODE CHANGE	YC	07/20

THE INSTALLATION DETAILS DESCRIBED HEREIN ARE GENERIC AND MAY NOT REFLECT ACTUAL CONDITIONS FOR A SPECIFIC SITE. IF SITE CONDITIONS CAUSE INSTALLATION TO DEVIATE FROM THE REQUIREMENTS DETAILED HEREIN, A LICENSED ENGINEER OR ARCHITECT SHALL PREPARE SITE SPECIFIC DOCUMENTS FOR USE WITH THIS DOCUMENT.



HERMES F. NORERO, P.E.  
TEXAS P.E. No 113471  
BUILDING DROPS, INC  
398 E. DANIA BEACH BLVD. # 338  
DANIA BEACH, FL 33004  
TBPE CERT. OF AUTHORIZATION NO. 13734

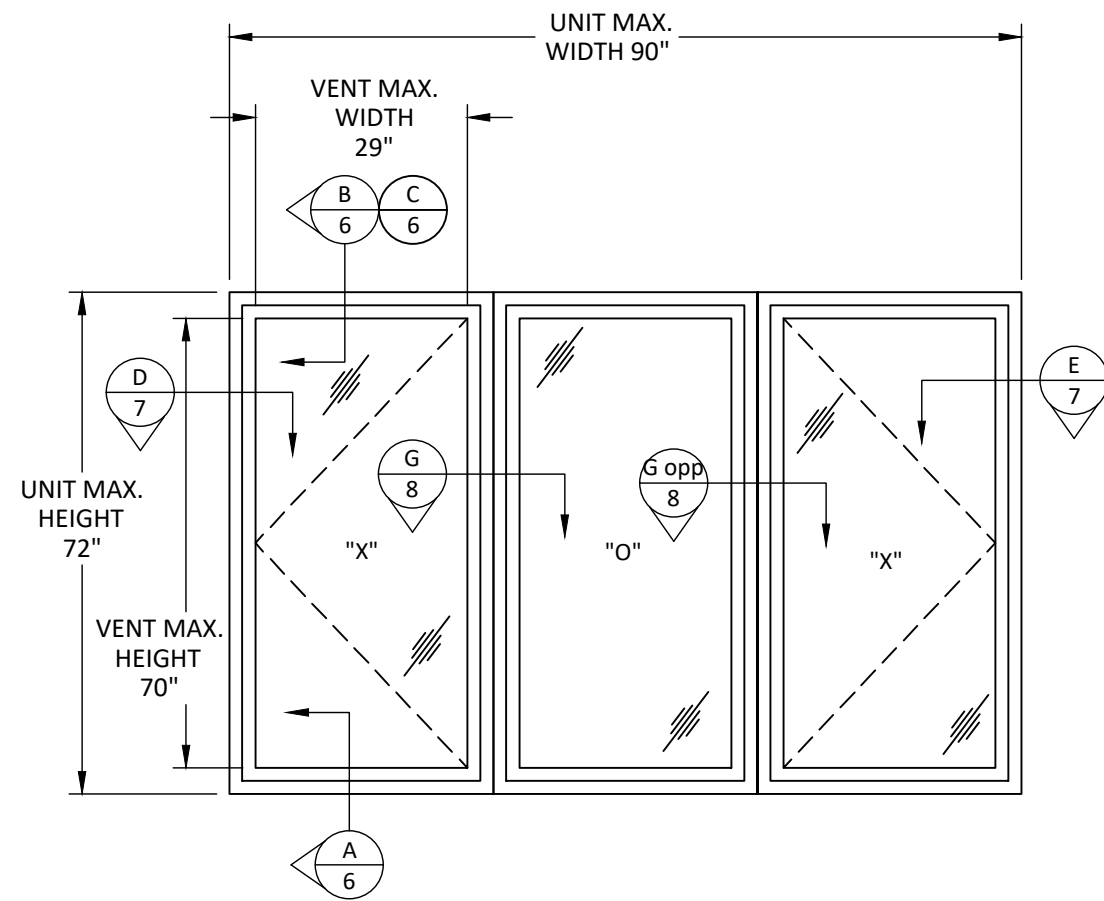
DATE: 07.20.2020

DWG. BY: SM      CHK. BY: HFN

SCALE: NTS

DWG. #: ATR125

SECTION:

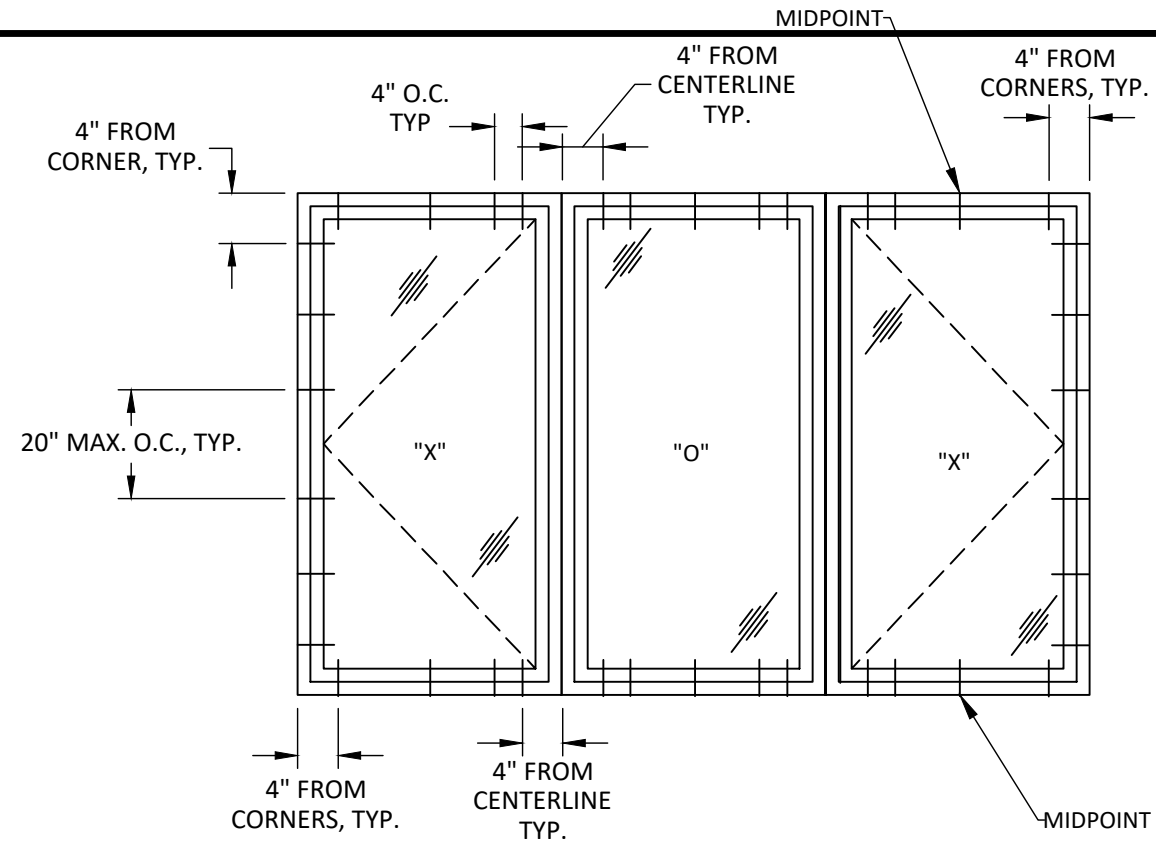


**TYPICAL ELEVATION**

XOX UNIT  
QUALIFIED CONFIGURATIONS - XO & OX

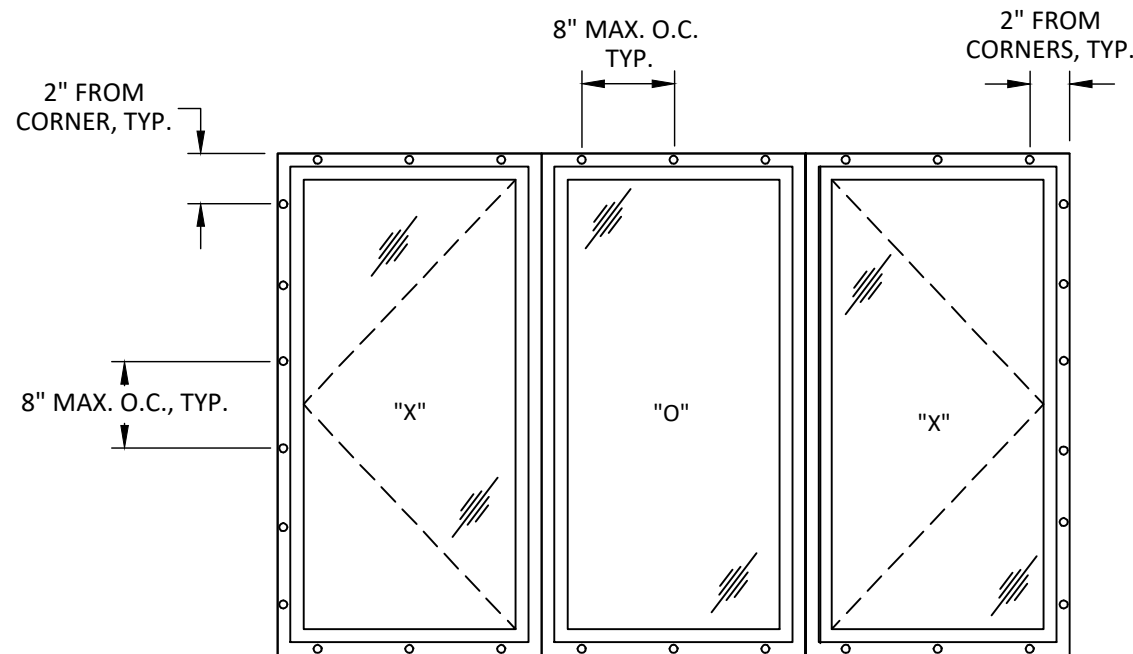
**NOTE:**

1. THE VENT WIDTH OF THE QUALIFIED CONFIGURATIONS SHOULD BE EQUAL TO OR LESS THAN THE VENT WIDTH OF THE CERTIFIED CONFIGURATION.
2. CONFIGURATIONS ARE HINGED OF THE JAMB.



**ANCHOR LAYOUT**

XOX UNIT- THROUGH FRAME



**ANCHOR LAYOUT**

XOX UNIT- NAILING FIN



ATRIUM CORPORATION  
9001 AMBASSADOR ROW  
DALLAS, TX 75247  
PH: (214) 637-2696 FAX: (214) 424-6734

TITLE: SERIES 700/720/750/760  
CASEMENT WINDOW  
X,XX,XOX,XOXX

XOXX ELEVATION AND  
ANCHOR LAYOUTS

PREPARED BY:  
BUILDING DROPS, INC.

398 E. DANIA BEACH BLVD., STE. 338  
DANIA BEACH, FL 33004  
PH: (954)395-8478  
FAX: (954)744-4738  
WEB: www.buildingdrops.com



REMARKS	BY	DATE
TESTING UPDATE	SM	07/14
CODE CHANGE	YC	07/20

THE INSTALLATION DETAILS DESCRIBED HEREIN ARE GENERIC AND MAY NOT REFLECT ACTUAL CONDITIONS FOR A SPECIFIC SITE. IF SITE CONDITIONS CAUSE INSTALLATION TO DEVIATE FROM THE REQUIREMENTS DETAILED HEREIN, A LICENSED ENGINEER OR ARCHITECT SHALL PREPARE SITE SPECIFIC DOCUMENTS FOR USE WITH THIS DOCUMENT.



HERMES F. NORERO, P.E.  
TEXAS P.E. No 113471  
BUILDING DROPS, INC  
398 E. DANIA BEACH BLVD. # 338  
DANIA BEACH, FL 33004  
TBPE CERT. OF AUTHORIZATION NO. 13734

DATE: 07.20.2020

DWG. BY: SM  
CHK. BY: HFN

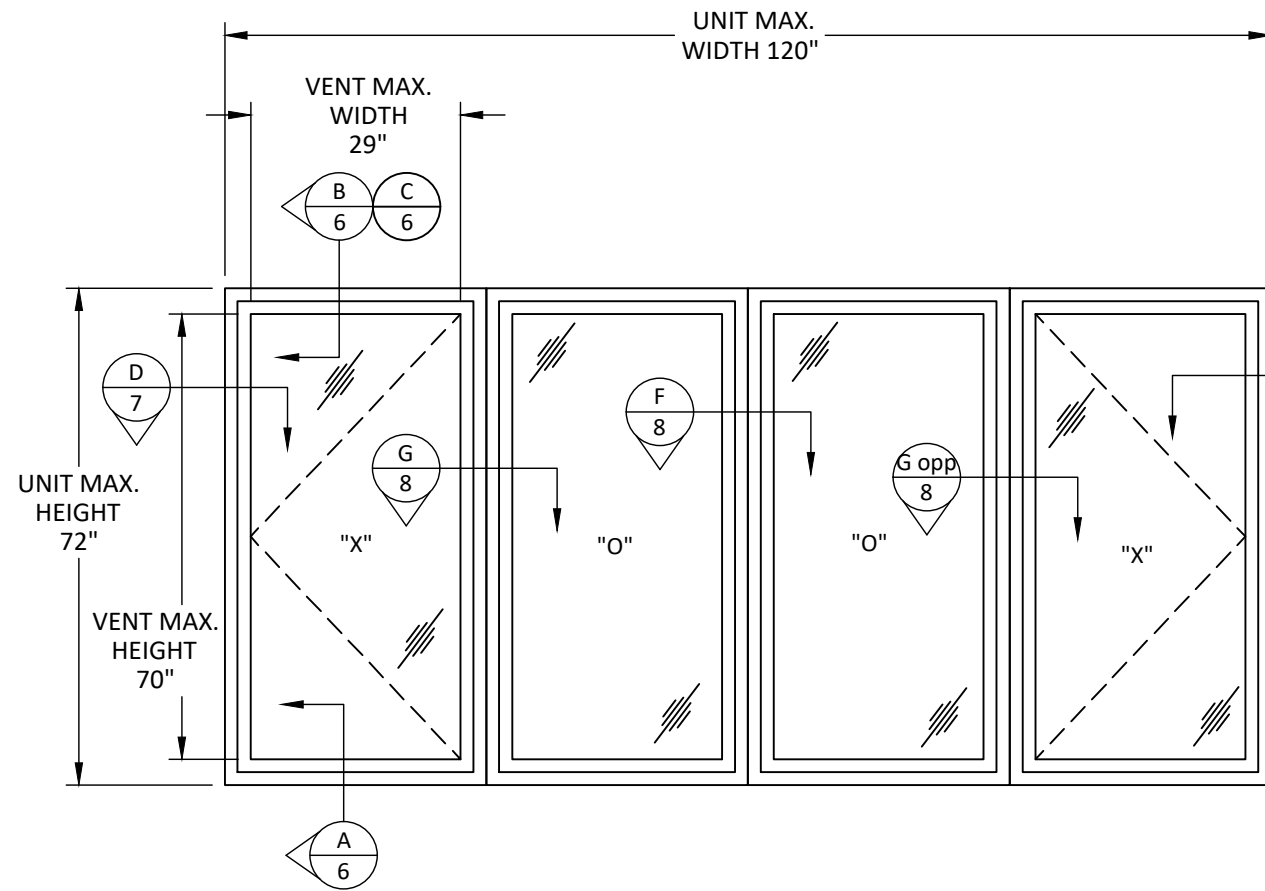
SCALE: NTS

DWG. #: ATR125

SECTION:

5

OF 8

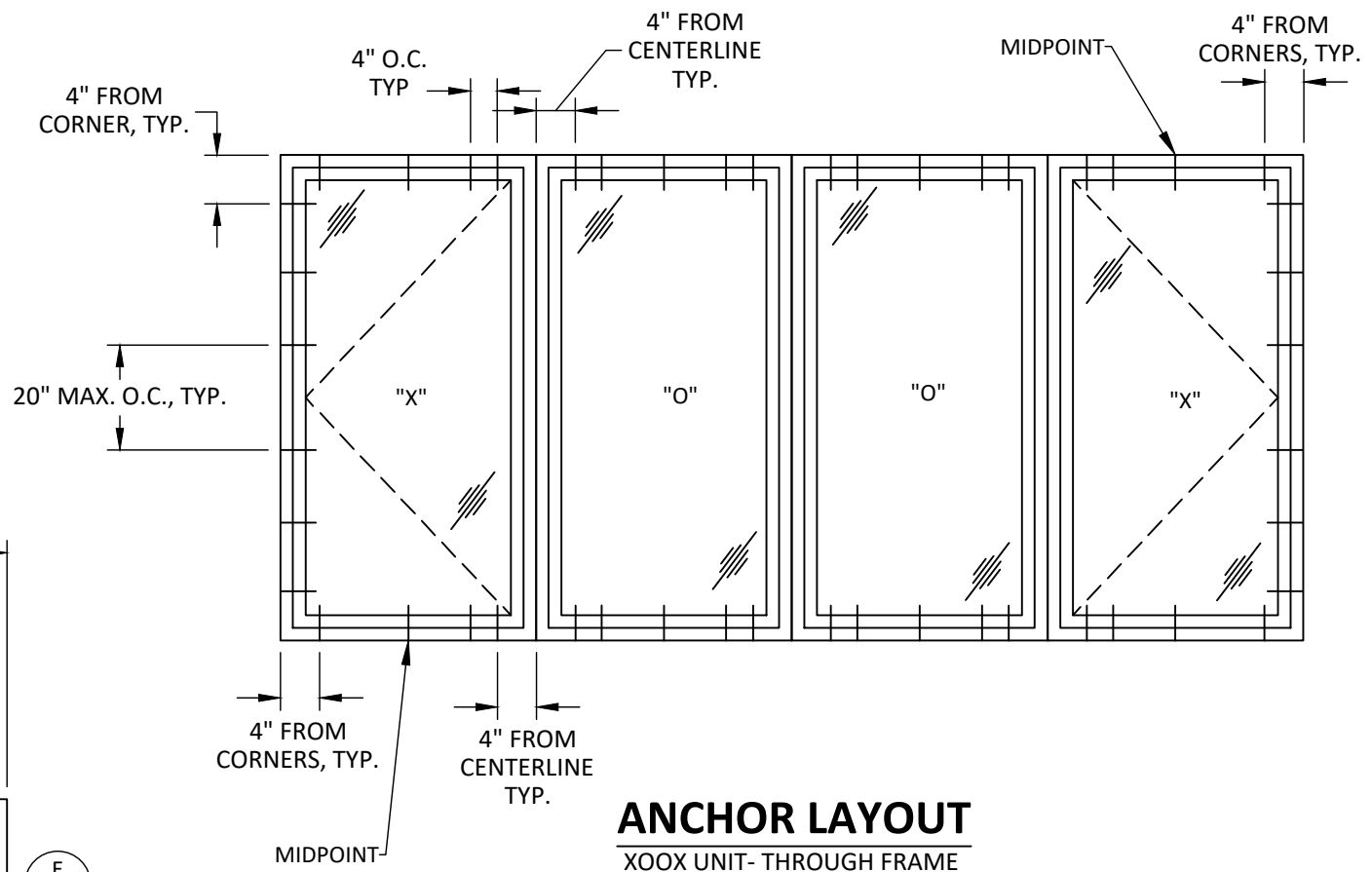


**TYPICAL ELEVATION**

XOXX UNIT  
QUALIFIED CONFIGURATIONS - XOX, XO & OX

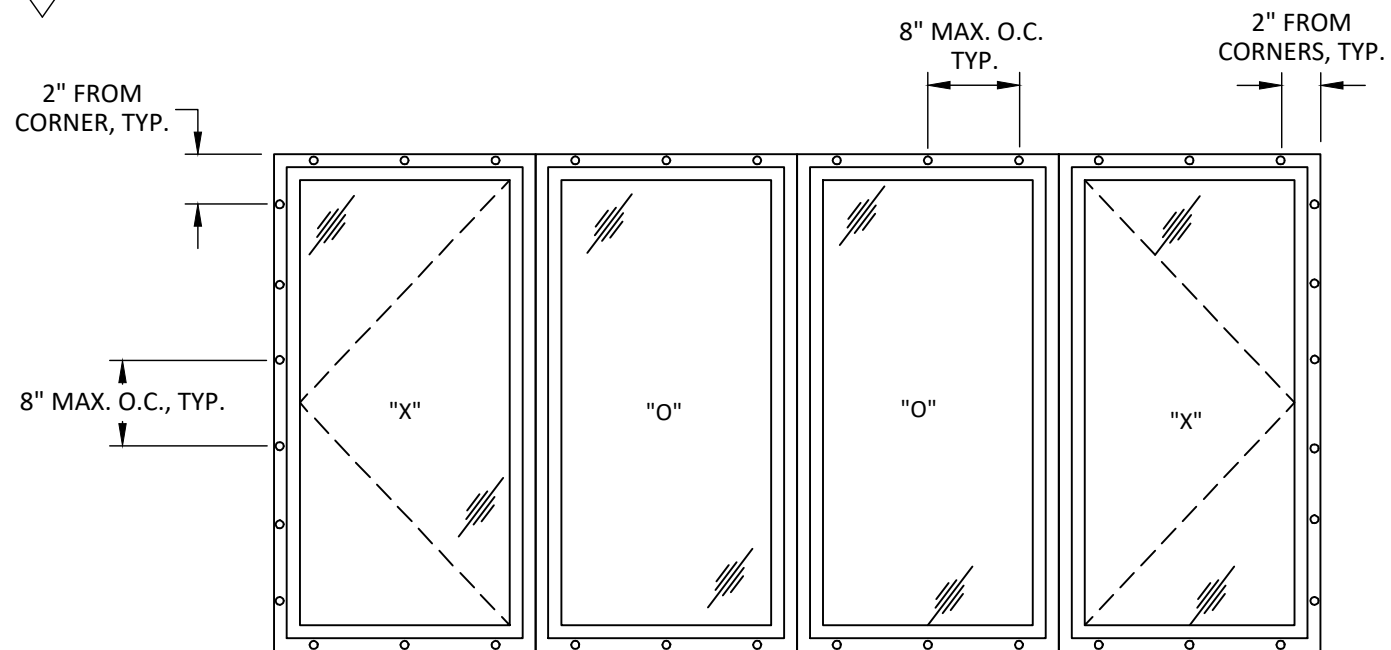
**NOTE:**

1. THE VENT WIDTH OF THE QUALIFIED CONFIGURATIONS SHOULD BE EQUAL TO OR LESS THAN THE VENT WIDTH OF THE CERTIFIED CONFIGURATION.
2. CONFIGURATIONS ARE HINGED OF THE JAMB.



**ANCHOR LAYOUT**

XOXX UNIT- THROUGH FRAME



**ANCHOR LAYOUT**

XOXX UNIT- NAILING FIN

TITLE: SERIES 700/720/750/760  
CASEMENT WINDOW  
X,XX,XOX,XOXX

VERTICAL SECTIONS AND  
GLAZING DETAILS

PREPARED BY:  
**BUILDING DROPS, INC.**  
398 E. DANIA BEACH BLVD., STE. 338  
DANIA BEACH, FL 33004  
PH: (954)395-8478  
FAX: (954)744-4738  
WEB: www.buildingdrops.com

REMARKS	BY	DATE
TESTING UPDATE	SM	07/14
CODE CHANGE	YC	07/20

THE INSTALLATION DETAILS DESCRIBED HEREIN ARE GENERIC AND MAY NOT REFLECT ACTUAL CONDITIONS FOR A SPECIFIC SITE. IF SITE CONDITIONS CAUSE INSTALLATION TO DEVIATE FROM THE REQUIREMENTS DETAILED HEREIN, A LICENSED ENGINEER OR ARCHITECT SHALL PREPARE SITE SPECIFIC DOCUMENTS FOR USE WITH THIS DOCUMENT.



HERMES F. NORERO, P.E.  
TEXAS P.E. No 113471  
BUILDING DROPS, INC  
398 E. DANIA BEACH BLVD. # 338  
DANIA BEACH, FL 33004  
TBPE CERT. OF AUTHORIZATION NO. 13734

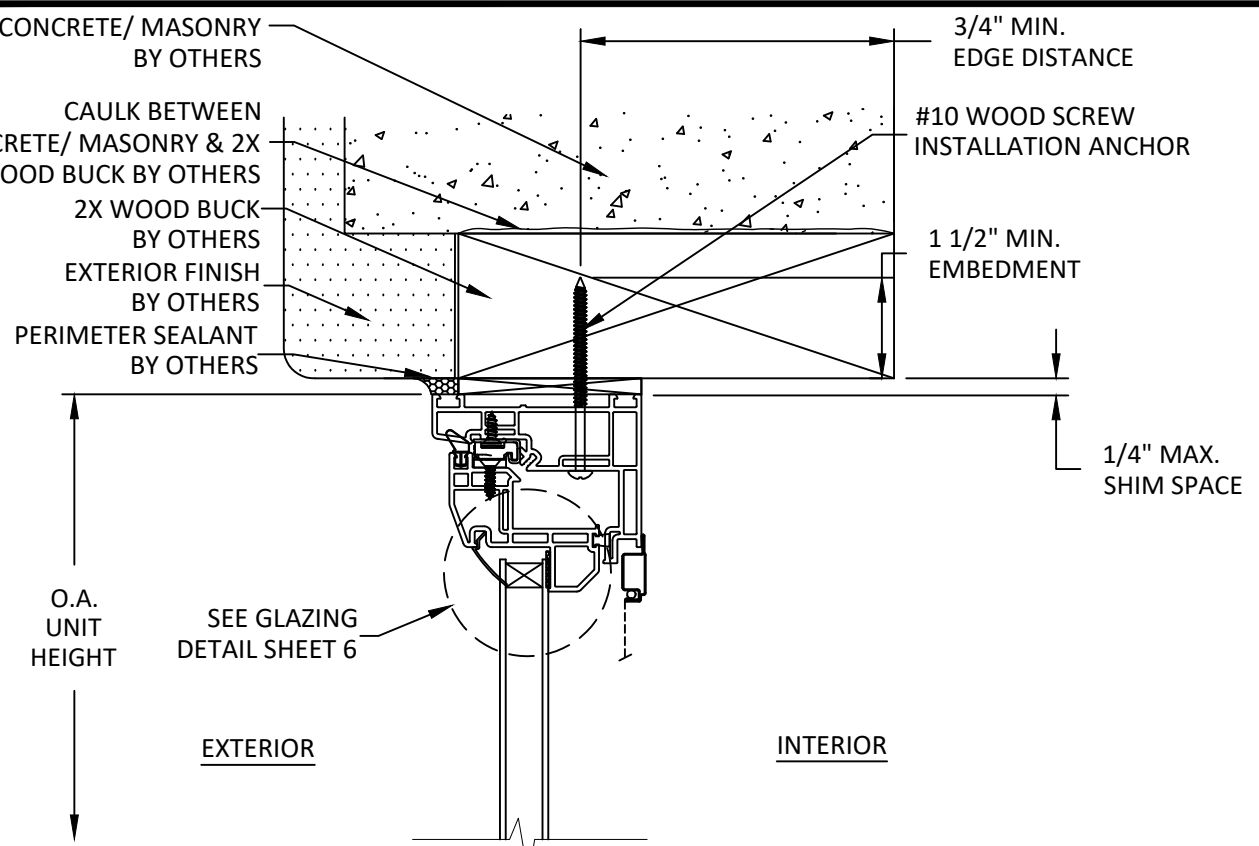
DATE: 07.20.2020

DWG. BY: SM      CHK. BY: HFN

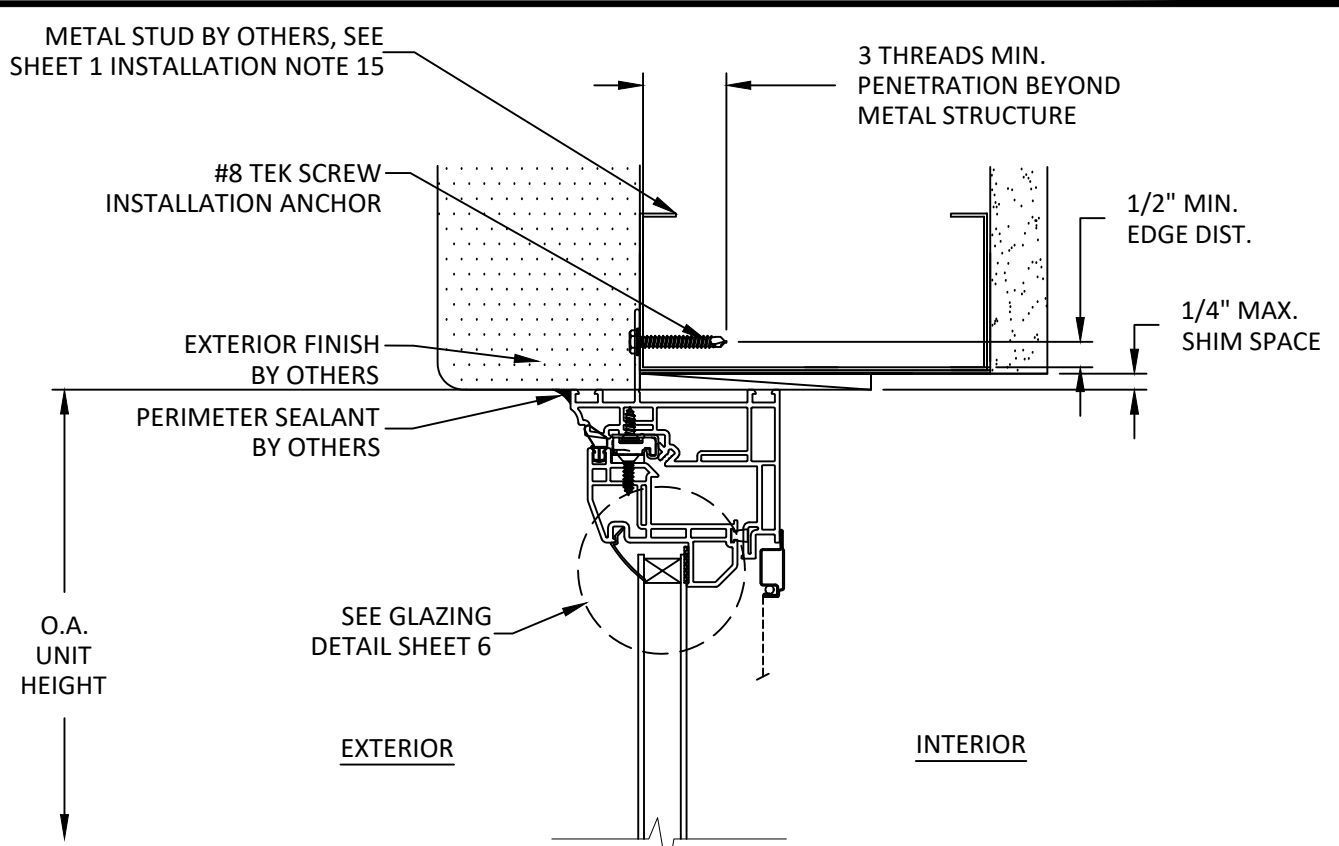
SCALE: NTS

DWG. #: ATR125

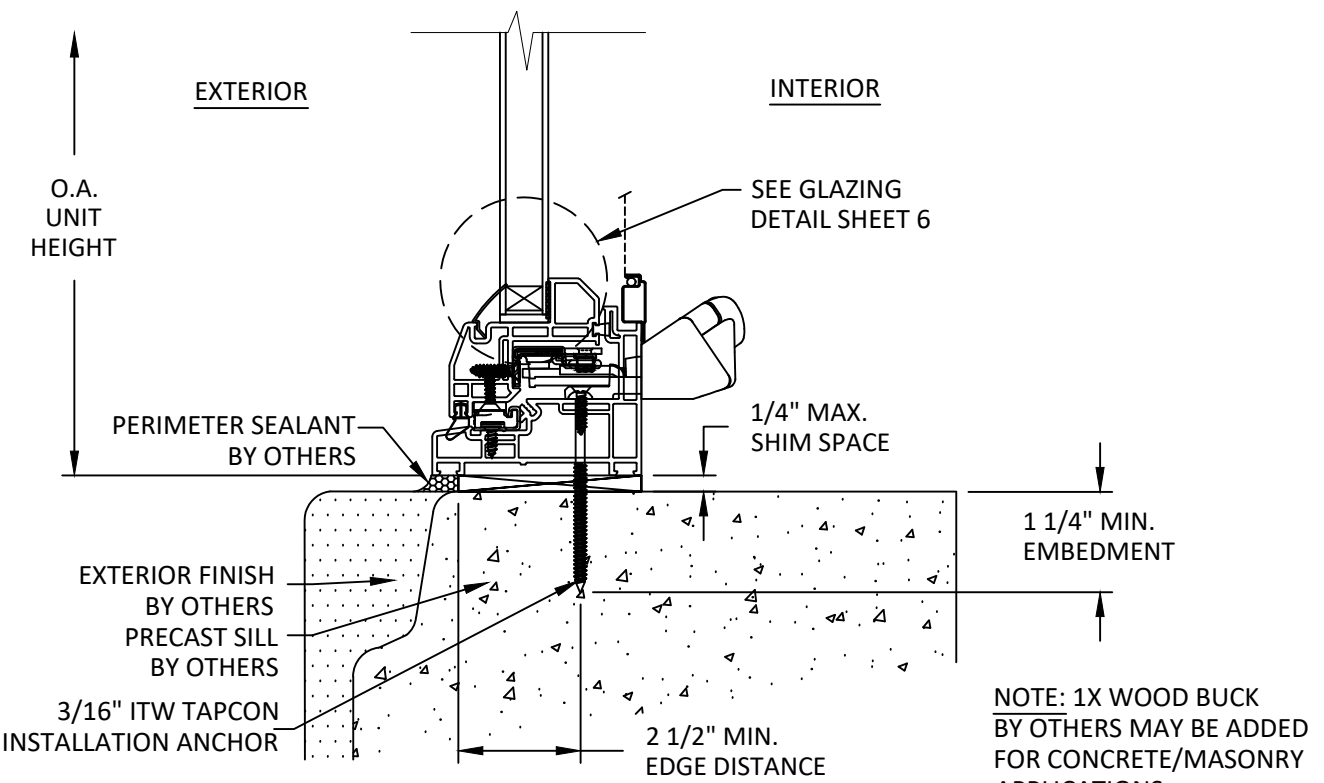
SECTION: 6



**B**  
**6** VERTICAL SECTION  
HEAD - VENT - 2X WOOD BUCK  
THROUGH FRAME

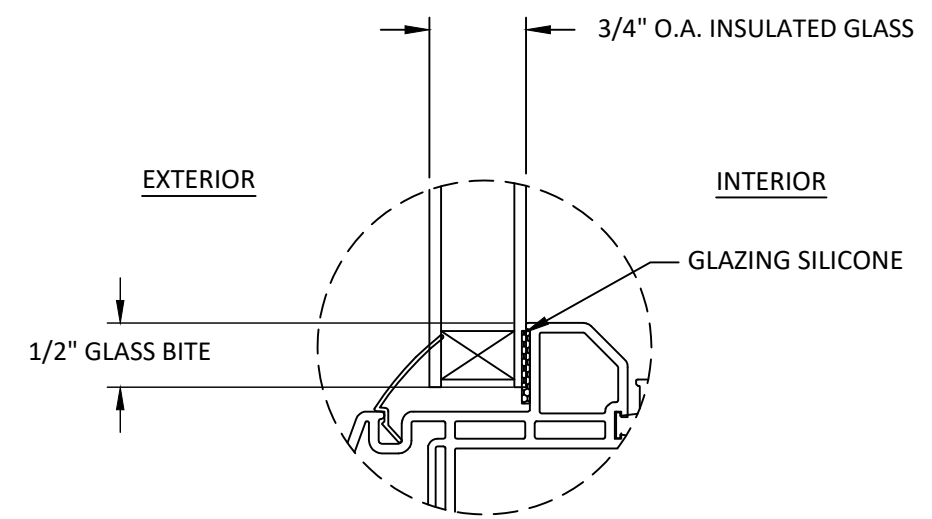


**C**  
**6** VERTICAL SECTION  
HEAD - FIXED - METAL STUD  
NAILING FIN



**A**  
**6** VERTICAL SECTION  
SILL - VENT - CONCRETE/MASONRY  
THROUGH FRAME

NOTE: 1X WOOD BUCK  
BY OTHERS MAY BE ADDED  
FOR CONCRETE/MASONRY  
APPLICATIONS



**GLAZING DETAIL 1**

NOTE:  
GLASS TYPE & THICKNESS SHALL MEET  
THE REQUIREMENTS OF ASTM E 1300  
GLASS CHARTS

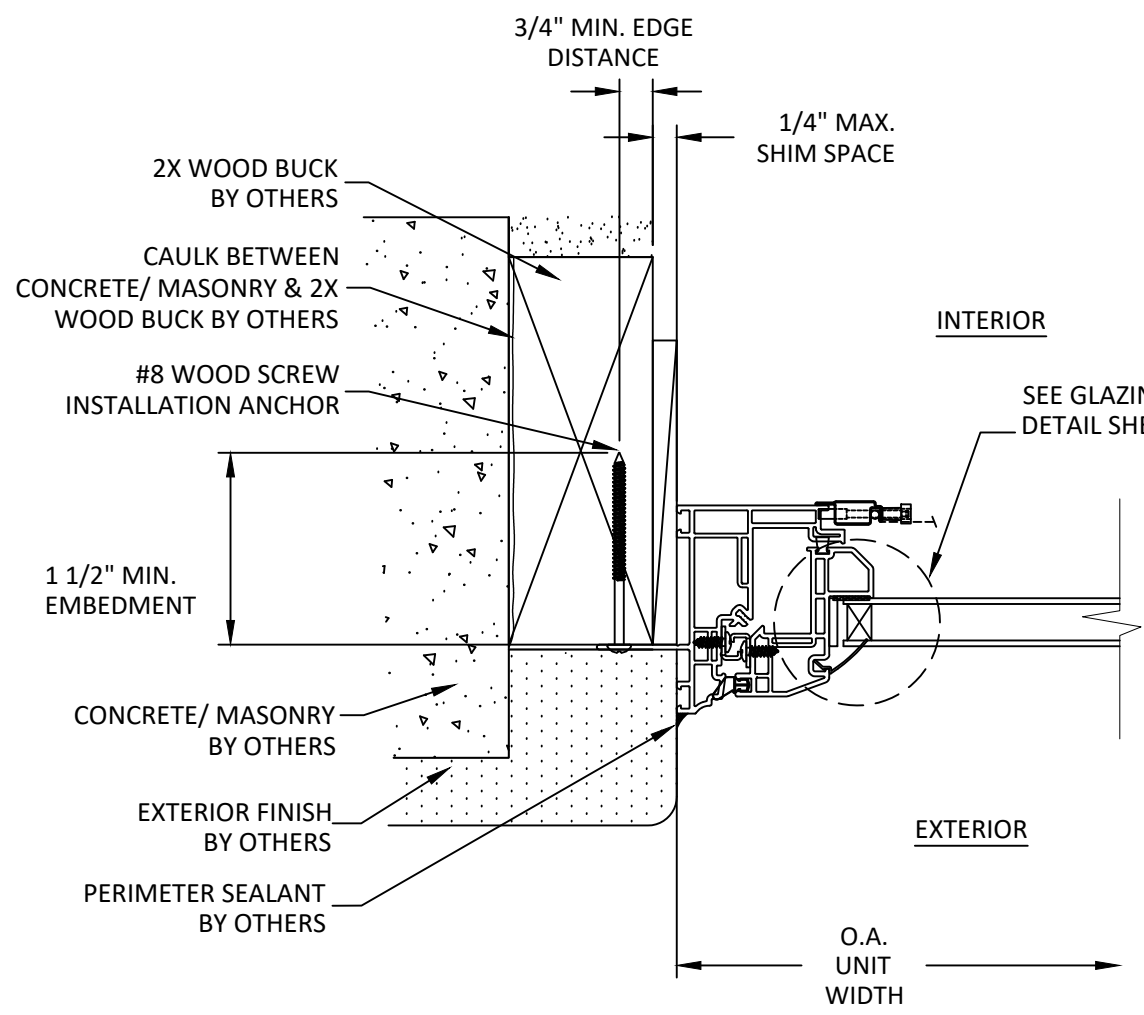
7/29/2020 10:17 AM  
c:\users\rcruz\on edrive - building drops, inc\tdi-20-0704 - tdi submittal - win-1654, dr-387 and win-1175 (revision)\dwgs\atr125\atr125.dwg

7/29/2020 10:17 AM

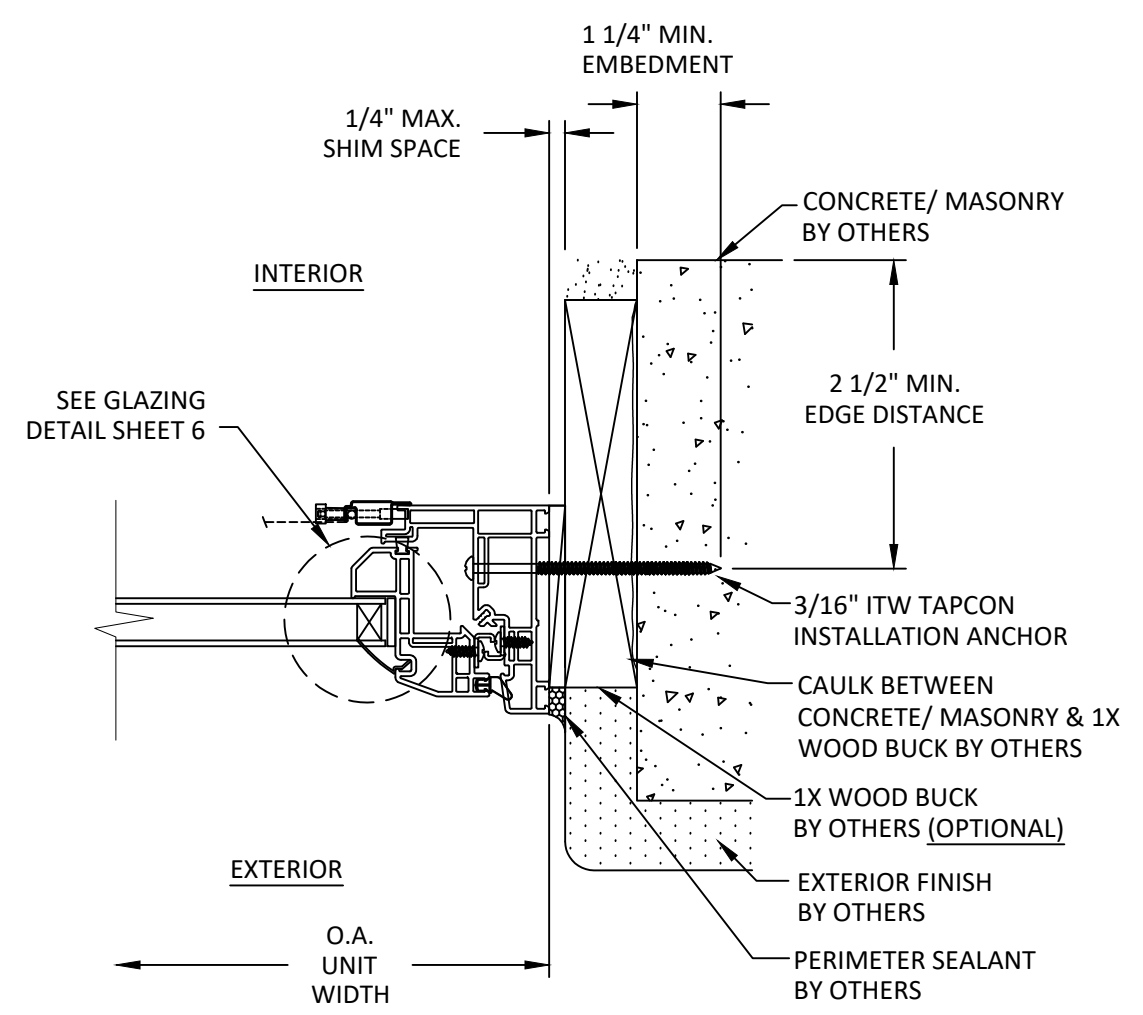
c:\users\yruz\onedrive - building drops, inc\atd-20-0704 - tdl submittal - win-1654, dr-387 and win-1175 (revision)\dwg\atd-125\atd-125.dwg



ATRUM CORPORATION  
9001 AMBASSADOR ROW  
DALLAS, TX 75247  
PH: (214) 637-2696 FAX: (214) 424-6734



**D**  
**7** **HORIZONTAL SECTION**  
JAMB - 2X WOOD BUCK  
NAILING FIN



**E**  
**7** **HORIZONTAL SECTION**  
JAMB - CONCRETE/MASONRY  
THROUGH FRAME

TITLE: SERIES 700/720/750/760  
CASEMENT WINDOW  
X,XX,XOX,XOXX

HORIZONTAL SECTIONS

PREPARED BY:  
**BUILDING DROPS, INC.**  
398 E. DANIA BEACH BLVD., STE. 338  
DANIA BEACH, FL 33004  
PH: (954) 399-8478  
FAX: (954) 744-4738  
WEB: www.buildingdrops.com

REMARKS	BY	DATE
TESTING UPDATE	SM	07/14
CODE CHANGE	YC	07/20

THE INSTALLATION DETAILS DESCRIBED HEREIN ARE GENERIC AND MAY NOT REFLECT ACTUAL CONDITIONS FOR A SPECIFIC SITE. IF SITE CONDITIONS CAUSE INSTALLATION TO DEVIATE FROM THE REQUIREMENTS DETAILED HEREIN, A LICENSED ENGINEER OR ARCHITECT SHALL PREPARE SITE SPECIFIC DOCUMENTS FOR USE WITH THIS DOCUMENT.



HERMES F. NORERO, P.E.  
TEXAS P.E. No 113471  
BUILDING DROPS, INC  
398 E. DANIA BEACH BLVD. # 338  
DANIA BEACH, FL 33004  
TBPE CERT. OF AUTHORIZATION NO. 13734

DATE: 07.20.2020

DWG. BY: <b>SM</b>	CHK. BY: <b>HFN</b>
SCALE: <b>NTS</b>	
DWG. #: <b>ATR125</b>	

SECTION:  
**7**  
OF 8

TITLE: SERIES 700/720/750/760  
CASEMENT WINDOW  
X,XX,XOX,XOXX

HORIZONTAL SECTIONS

PREPARED BY:  
**BUILDING DROPS, INC.**  
398 E. DANIA BEACH BLVD., STE. 338  
DANIA BEACH, FL 33004  
PH: (954) 399-8478  
FAX: (954) 744-4738  
WEB: www.buildingdrops.com



REMARKS	BY	DATE
TESTING UPDATE	SM	07/14
CODE CHANGE	YC	07/20

THE INSTALLATION DETAILS DESCRIBED HEREIN ARE GENERIC AND MAY NOT REFLECT ACTUAL CONDITIONS FOR A SPECIFIC SITE. IF SITE CONDITIONS CAUSE INSTALLATION TO DEVIATE FROM THE REQUIREMENTS DETAILED HEREIN, A LICENSED ENGINEER OR ARCHITECT SHALL PREPARE SITE SPECIFIC DOCUMENTS FOR USE WITH THIS DOCUMENT.



HERMES F. NORERO, P.E.  
TEXAS P.E. No 113471  
BUILDING DROPS, INC  
398 E. DANIA BEACH BLVD. # 338  
DANIA BEACH, FL 33004  
TBPE CERT. OF AUTHORIZATION NO. 13734

DATE: 07.20.2020

DWG. BY: <b>SM</b>	CHK. BY: <b>HFN</b>
-----------------------	------------------------

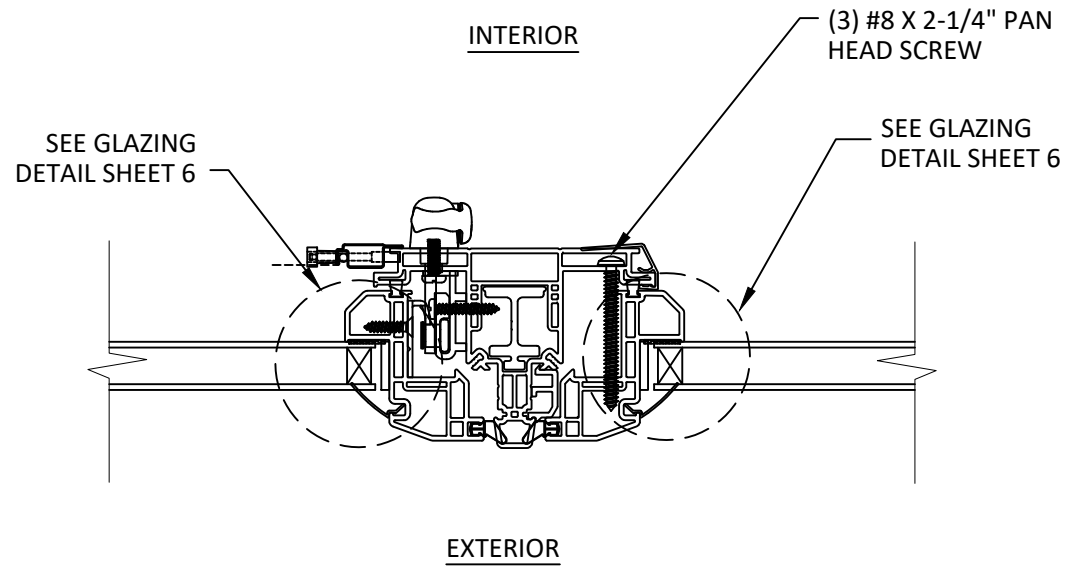
SCALE: **NTS**

DWG. #: **ATR125**

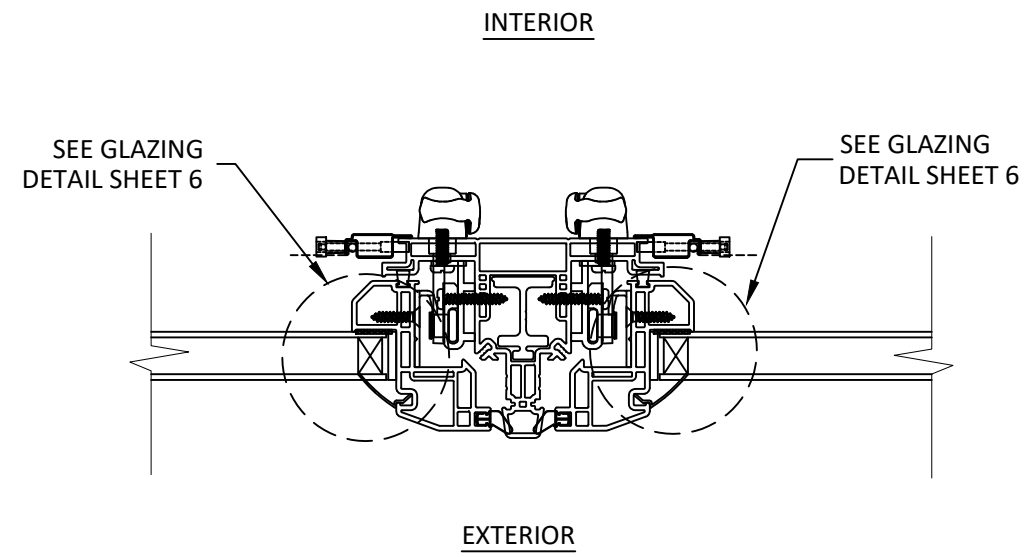
SECTION:

8

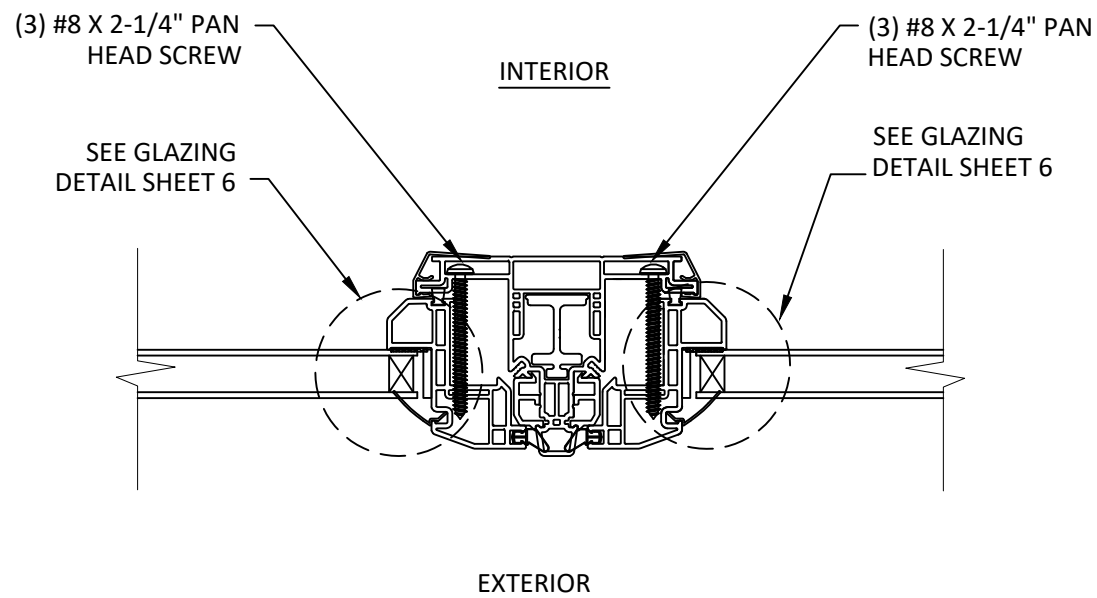
OF 8



**G**  
**8** **HORIZONTAL SECTION**  
MEETING STILE / CASEMENT TO FIXED



**H**  
**8** **HORIZONTAL SECTION**  
MEETING STILE / CASEMENT TO CASEMENT



**F**  
**8** **HORIZONTAL SECTION**  
MEETING STILE / FIXED TO FIXED