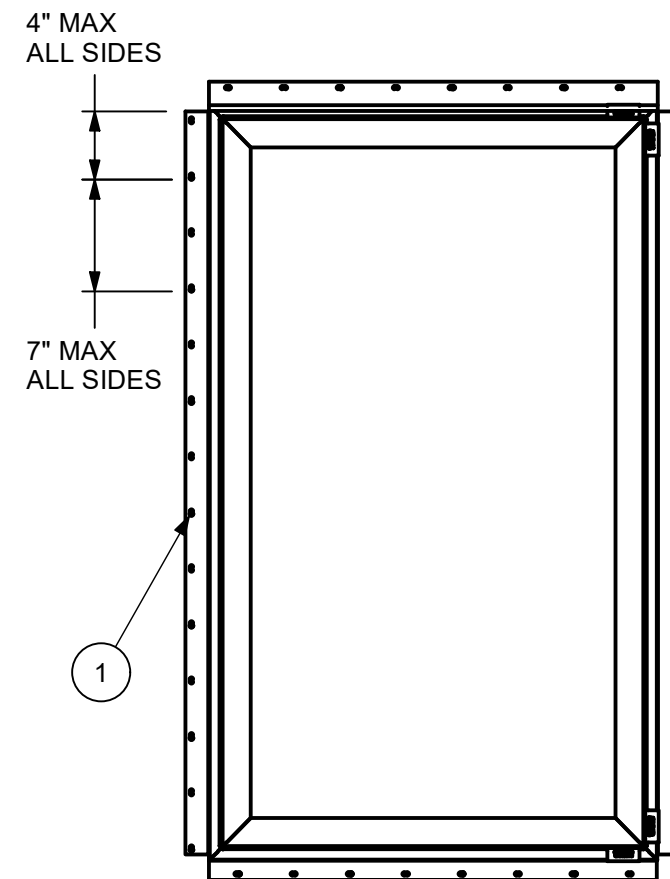
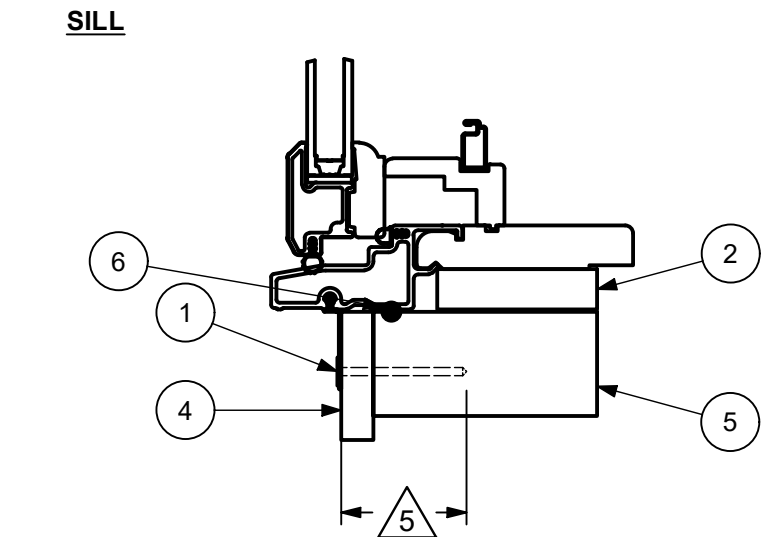
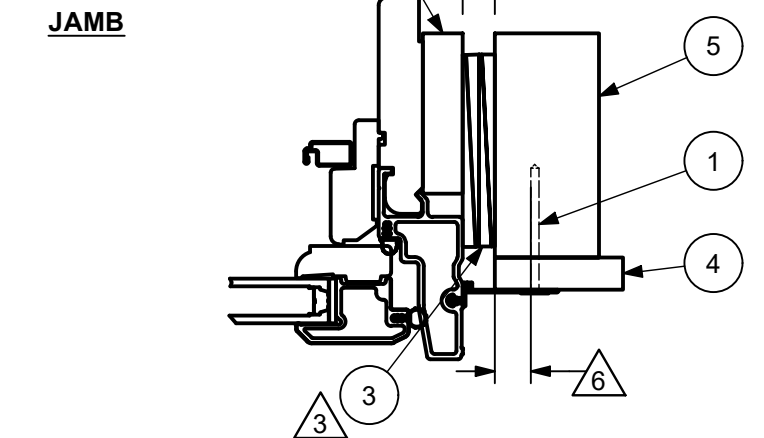
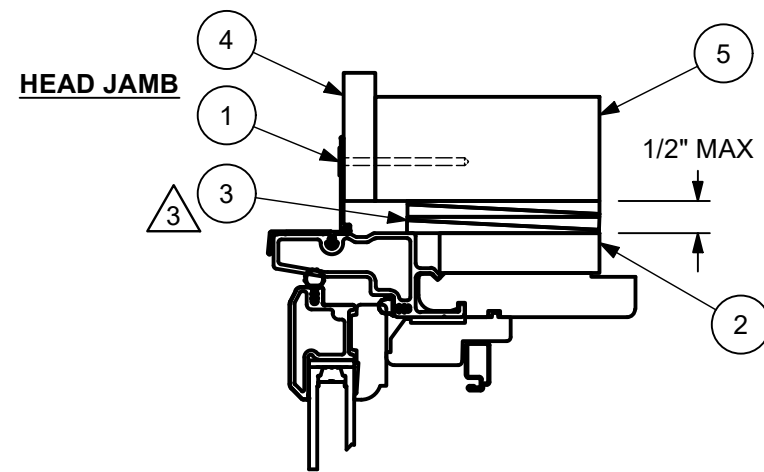
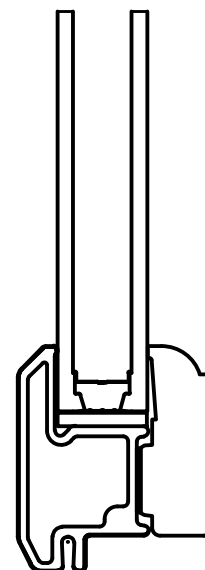


**NAIL FIN INSTALLATION**



CENTER SCALE 1:12



**NAIL FIN INSTALLATION**

-SECURE NAIL FIN WITH 2" GALVANIZED ROOFING NAILS. MINIMUM OF TWO PER SIDE. SPACE PER THE ELEVATION.  
 -FIRST AND LAST NAILS IN NAIL FIN SHOULD BE NO MORE THAN 6" FROM THE END ON ALL SIDES  
 -CONSECUTIVE NAILS SHOULD BE NO MORE THAN 8" APART ON ALL SIDES  
 -APPLY A 5/16" BEAD OF ASTM C920 GRADE NS, CLASS 25 SEALANT TO SILL/FRAMING

GLAZING  
DETAIL  
2:3

**CATEGORY:**  
CASEMENT

**UNIT TYPE:**  
ELCA, ELAWN, ELCAP, ELCATR

UNIT	MAX FRAME SIZE	DP RATING
ELAWN	36 X 47-1/8	+50/-50
ELAWN	48 X 47-1/8	+50/-50
ELCA	29 X 71-1/8	+50/-50
ELCA	36 X 34	+50/-50
ELCA	36 X 42	+50/-50
ELCA	36 X 71-1/8	+50/-50
ELCA P	72 X 55-18	+50/-50
ELCA TR	72 X 55-18	+50/-50

**NOTES:**

- FOR GENERAL SPECIFICATIONS, REFER TO DOC 00003952
- THIS PRINT IS FOR STRUCTURAL PERFORMANCE ONLY. FOR FLASHING & SEALING INSTRUCTIONS, REFER TO THE INSTALLATION INSTRUCTIONS
- SHIMS:
  - PLACE SHIMS WITHIN 4" - 6" OF EACH CORNER AND SPACE ALL OTHERS EVENLY WITH A MAXIMUM OF 15" APART
- IF CHEMICALLY TREATED LUMBER IS USED FOR FRAMING MATERIAL, FASTENERS INTO THE BUCK MUST BE A MINIMUM OF 0.90 OZ/FT<sup>2</sup> ZINC HOT DIPPED GALVANIZED OR STAINLESS STEEL TYPE 304 OR 316
- MINIMUM NAIL EMBEDMENT DEPTH: 1-15/16"
- MINIMUM EDGE DISTANCE: 1/2"
- GLASS COMPLIES WITH ASTM E1300
- FLORIDA PRODUCT APPROVAL: FL 9684 - ELCA  
FL 9686 - ELAWN FL 9690 - ELCAP

ITEM	DWG NO	DESCRIPTION
6	NA	ASTM C920 GRADE NS, CLASS 25 SEALANT
5	NA	FRAMING MATERIAL
4	NA	SHEATHING
3	NA	SHIMS
2	NA	5/8 X 3.500" FILLER BY CONTRACTOR
1	NA	2.00 GAL. ROOF NAIL

PARTS LIST



**COLLECTION:** ELEVATE

**DWG TYPE:** INSTALLATION  
**DESCRIPTION:** INSTALLATION METHODS/ELEVATIONS, NAIL FIN, FL 9684

<b>CHK:</b> CH 02/28/23	<b>SIZE:</b> B	<b>CLASS:</b> MISC	<b>DWG NO:</b> 00051286
<b>APP:</b> CRR 03/23/23	<b>SCALE:</b> 1:12	<b>DATE:</b> 8/29/2007	<b>DWG BY:</b> HEPPNER, CALEB <b>SHEET:</b> 1 OF 2

REV	DESCRIPTION / REQUESTOR	ECN NO	DATE	REV BY
3.4	ADDED CHART, ADDED GLAZING DETAIL, UPDATED MAX DIMENSIONS	27207	2/7/2023	JH

**NOTICE - CONFIDENTIAL INFORMATION**

The information in this document is privileged and strictly confidential. The information contained herein shall be used only by Marvin employees and by those agents or suppliers granted official written permission. If the reader of this document is not the intended recipient, or the employee or agent of the intended recipient, please delete this document from all data storage devices, and destroy all hard copies. Any unauthorized dissemination, distribution, copying or other use of the information contained in this document is strictly prohibited.