

Product Evaluation

RC191 | 0823

Engineering Services Program

The following product has been evaluated for compliance with the wind loads specified in the International Residential Code (IRC) and the International Building Code (IBC).

This product evaluation is not an endorsement of this product or a recommendation that this product be used. The Texas Department of Insurance has not authorized the use of any information contained in the product evaluation for advertising, or other commercial or promotional purpose.

This product evaluation is intended for use by those individuals who are following the design wind load criteria in Chapter 3 of the IRC and Section 1609 of the IBC. The design loads determined for the building or structure shall not exceed the design load rating specified for the products shown in the limitations section of this product evaluation. This product evaluation does not relieve a Texas licensed engineer of his responsibilities as outlined in the Texas Insurance Code, the Texas Administrative Code, and the Texas Engineering Practice Act.

For more information, contact TDI Engineering Services Program at (800) 248-6032.

Evaluation ID: RC-191

Effective Date: August 1, 2023

Re-evaluation Date: August 2027

Product Name: Corrugated Metal Roofing Panels/CPB Installed Over a Plywood or OSB Deck

Manufacturer: Mueller, Inc.
Steel Building Systems and Components
1913 Hutchins Avenue
Ballinger, TX 76821
(800) 527-1087

General Description:

This evaluation report is for Corrugated Metal Roofing Panels/CPB that are secured to wood structural panels (either nominal 15/32" plywood or nominal 7/16" OSB. Thicker plywood or thicker OSB may be used; however, the design pressure rating for the metal roofing panels must be as specified in this evaluation report.

The Corrugated Metal Roofing Panels/CPB are 34" in width and have a 29-1/2" coverage. The metal roof panels have a 7/8" rib height. The metal roof panels are manufactured from minimum 26-gauge coated steel that conform to ASTM A446, Grade E, with a minimum yield strength of 80,000 psi. The metal roofing panels have either an AZ 55 hot-dipped aluminum zinc alloy coating or a hot-dipped galvanized coating conforming to ASTM A525.

Limitations:

Roof Framing: The metal roofing panels must be installed over nominal 15/32" plywood or nominal 7/16" OSB. Roof framing (rafters or trusses) must not exceed 24" on center.

New Roof Framing Attachment: The roof framing must meet or exceed the uplift requirements of the IRC or IBC and must be installed as required for resistance to wind loads.

Design Wind Pressures: For installations over nominal 7/16" OSB wood structural panel decks, the design pressure uplift load resistance must be as specified in Table 1. For installations over nominal 15/32" plywood wood structural panel decks, the design pressure uplift load resistance must be as specified in Table 2.

Roof Slope: The metal roofing panels may be installed on roofs with a roof slope as low as 3:12. If the laps are sealed with a lap sealant, then the minimum roof slope must be 1/2:12.

Table 1. Attachment of minimum 26-Gauge Corrugated Metal Roofing Panels/CPB to Nominal 7/16" OSB Wood Structural Panel Decks

Design Wind Pressure	Fastener Pattern	Fastener Spacing
-41.7 psf	8"-8"-8"-5.5"	30" o.c.
-69.3 psf	8"-8"-8"-5.5"	15" o.c.

Table 2. Attachment of Minimum 26-gauge Corrugated Metal Roofing Panels/CPB to Nominal 15/32" Plywood Wood Structural Panel Decks

Design Wind Pressure	Fastener Pattern	Fastener Spacing
-59.3 psf	8"-8"-8"-5.5"	42" o.c.
-64.3 psf	8"-8"-8"-5.5"	36" o.c.
-144.3 psf	8"-8"-8"-5.5"	12" o.c.

Installation Over an Existing Roof Covering: Installation over an existing roof covering is limited to a maximum of one existing layer of composition shingles, wood shingles or shakes, built-up roofing, or roll roofing applied over an existing, solid roof deck. The existing roof deck must be nominal 7/16" OSB for installations in accordance with Table 1. The existing roof deck must be nominal 15/32" plywood for installations in accordance with Table 2. Note: Inspection of the existing roof deck must be made prior to the installation of the roof panels. The condition of the existing roof deck must be acceptable to receive the metal roofing panels before the metal roofing panel installation proceeds. NOTE: Underlayment is not required to be installed.

Installation Instructions:

Underlayment: A minimum of one layer of No. 30 felt or better must be used. The underlayment used must comply with one or more of the following: ASTM D 226, ASTM D 4869, or ASTM D 1970, and for synthetic underlayment, ASTM D 8257, AC 48, AC160, or AC 188. The underlayment must be installed following manufacturer's guidelines for side and end laps. The underlayment

must be applied with corrosion-resistant fasteners in accordance with manufacturer's installation instructions. Fasteners must be applied along the overlaps not farther apart than 36" on center.

Attachment of Metal Roof Panels to the Roof Deck: Minimum No. 12-11 x 1" long, SDT Type A screws with sealing washer, manufactured by Atlas or a fastener with equivalent properties. The fasteners must be long enough to ensure a minimum penetration of 1/4" below the roof deck. (Note: If the metal roofing panels are installed over an existing roof covering, then minimum No. 12-11 x 2" long, SDT Type A screws with sealing washer, manufactured by Atlas or a fastener with equivalent properties, must be used. The fasteners must be long enough to ensure a minimum penetration of 1/4" below the existing plywood roof decking.) The required fastener pattern as well as the maximum allowable spacing is specified in Table 1 and in Table 2. Figure 1 shows the required fastener patterns.

Trims, Closures, and Accessories: Components, such as the eave trim, rake trim, ridge trim, hip trim, and valley trim must be installed as required by the manufacturer.

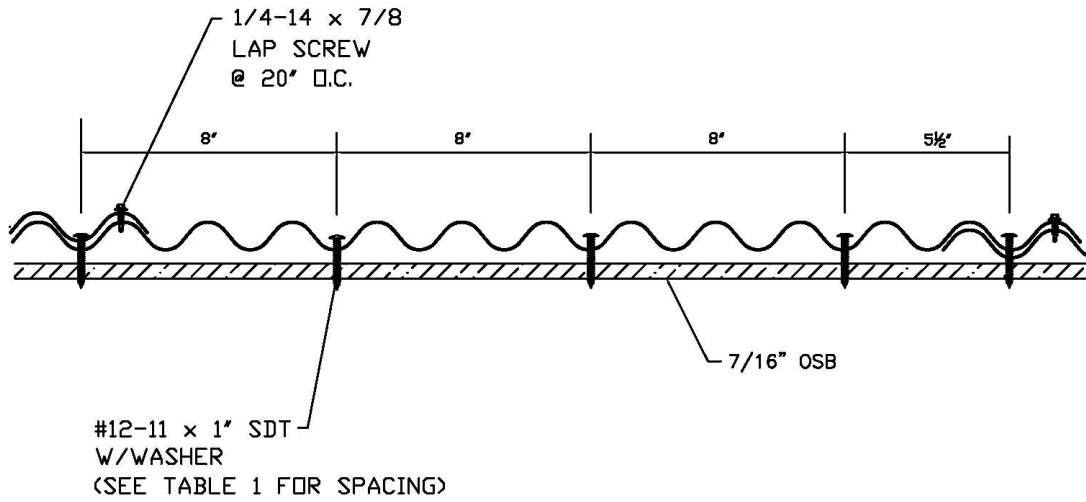
Alternative Fasteners: Substitution of equivalent fasteners must meet the following requirements:

No. 12-11 SDT Type A screws with sealing washer by Atlas or equivalent screws

- Ultimate withdrawal (pullout) \geq 243 lbs. in 7/16" OSB
- Ultimate withdrawal (pullout) \geq 435 lbs. in 1/2" plywood

Note: Keep the manufacturer's installation instructions available on the job site during the installation. Use corrosion resistant fasteners as specified in the IRC and the IBC.

FASTENER PATTERN OVER OSB



FASTENER PATTERN OVER PLYWOOD

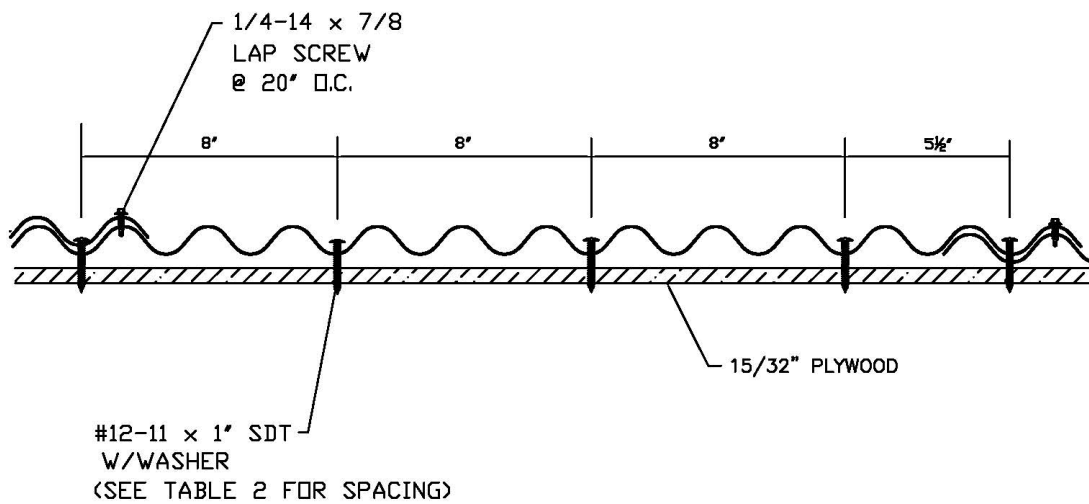


Figure 1. Fastener Patterns over Plywood and OSB