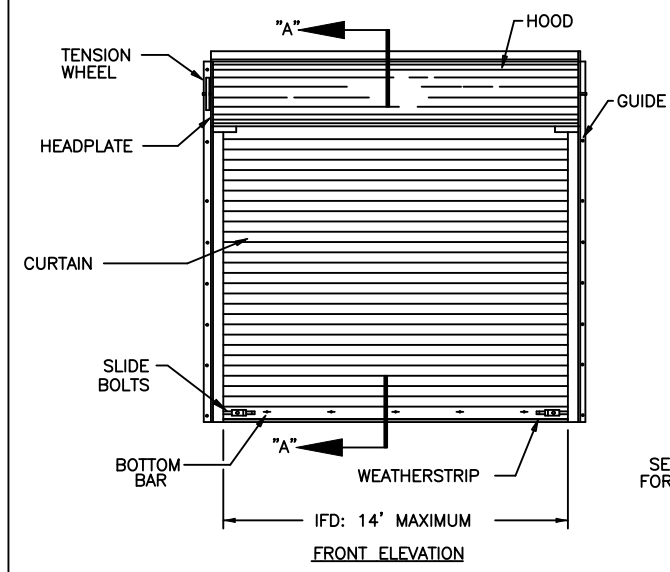


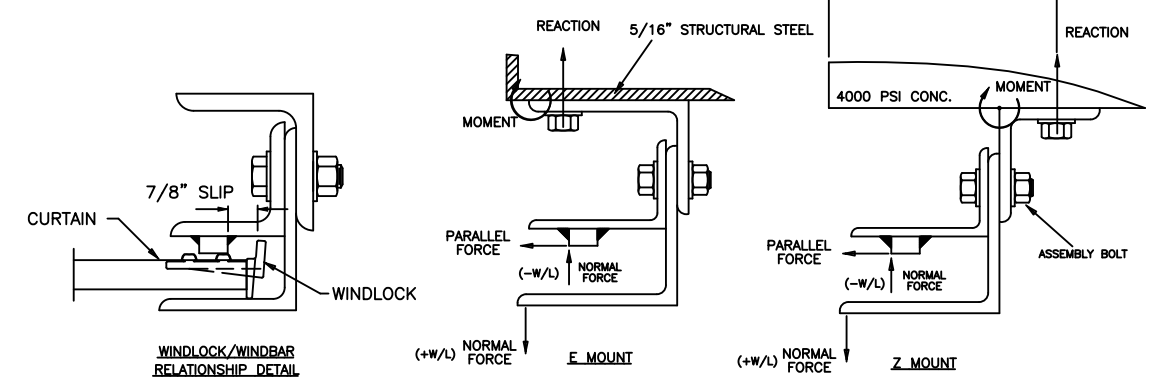
REVISIONS					
REV	DESCRIPTION	DATE	APPROVAL	BY	DATE
502235	E REV PER ER	7/18/13	MS		
502222	F REV PER ER	9/20/13	MS		
32787	G REV PER PCR	5/31/22	DG		

NOTES

- (-W/L) = NEGATIVE WINDLOAD
(+W/L) = POSITIVE WINDLOAD
- WALL ANGLES MAY BE WELDED TO STEEL JAMB.
USE MIN 60XX ELECTRODE
SEE SHEET 2 FOR WELD DETAIL
- RATED DESIGN LOAD ±65 PSF.
- CURTAIN MATERIAL: ASTM A-653 (30KSI MIN YIELD) OR
SS 304 (42KSI MIN YIELD).
GUIDE MATERIAL: ASTM A-36
- CURTAIN MATERIAL SHALL BE GALVANIZED ACCORDING
TO ASTM A-653 TO G40 (MINIMUM).
- THE DOOR MUST BE INSTALLED WITH THE TENSION WHEEL
FACING THE INSIDE OF THE BUILDING.
- SLIDE BOLTS MUST BE ENGAGED AND CHAIN MUST BE
HOOKED WHEN HURRICANE WINDS ARE ANNOUNCED
- WINDLOCK MATERIAL: LOW CARBON CAST STEEL, GRADE 70-46
(485-250) PER ASTM A27. MIN TENSILE 70-KSI MIN YIELD
36-KSI. MIN ELONG 22%
- WINDLOCKS ATTACHED TO EACH SLAT (CONTINUOUS)
- RIVET SPECIFICATIONS:
1/4" DIAMETER RIVET, MINIMUM 1006 LOW-CARBON STEEL.
- OPERATING (ROLL-UP) MECHANISM IS NOT INCLUDED IN THIS
APPROVAL. IT MUST BE CERTIFIED BY AN INDEPENDANT
TESTING AGENCY, IF REQUIRED.
- COMPLIES WITH IBC/IRC 2018.



HOT ROLLED ANGLES



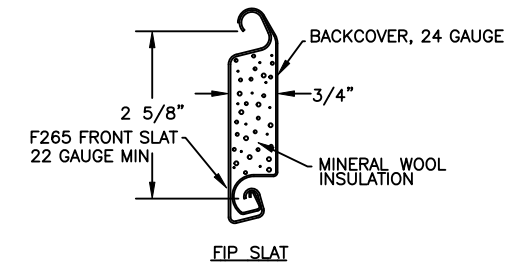
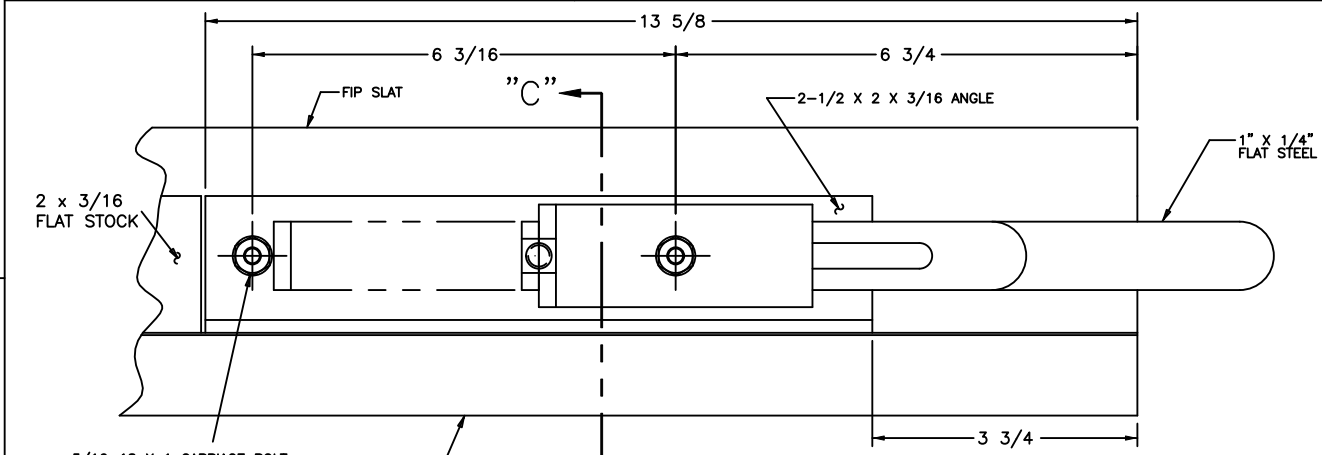
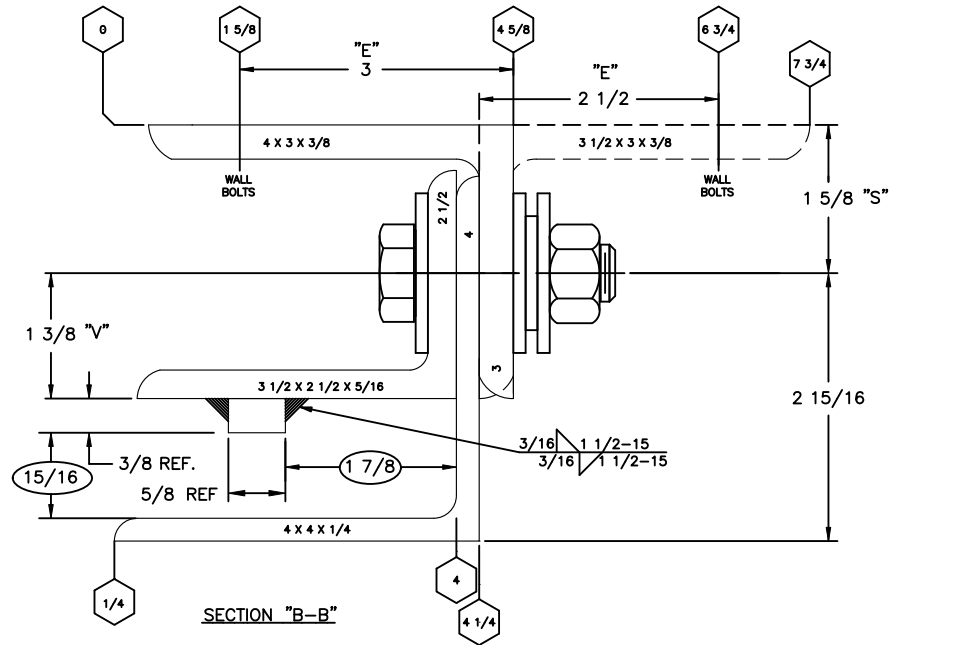
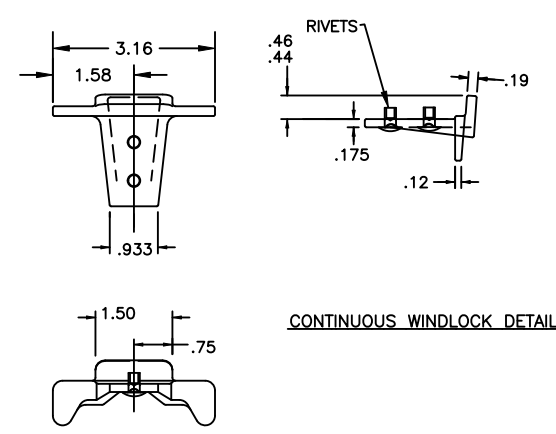
JAMB LOAD SUMMARY TABLE

PER FT DOOR HEIGHT	(E-MOUNT) LOADS	(Z-MOUNT) LOADS
REACTION (LBS)	3907	2131
NORMAL (LBS)	455	455
PARALLEL (LBS)	1208	1208
MOMENT (INLBS)	5499	5329

FASTENER SUMMARY TABLE

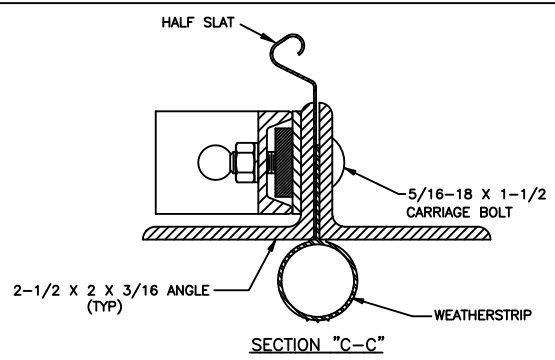
ASSEMBLY BOLT	WALL BOLT STEEL JAMB	WALL BOLT * CONCRETE JAMB
F-265 5/8" GRADE 5, 18" O.C.	1/2" GRADE 5, 12" O.C.	5/8", 5 1/2" EFF. EMBED HILTI KBTZ2 OR EQUIVALENT 8" O.C.

* 4000 PSI MINIMUM AND 6-3/4" EDGE DISTANCE FOR ANCHORS
MINIMUM 9" CONCRETE THICKNESS
NOTE: FOR DETAILS ON WELDING GUIDES TO STEEL JAMBS SEE SHEET 2.



FRONT SLAT GAUGE OPTIONS: 22**, 20, 18
** TESTED IN ACCORDANCE WITH DADE COUNTY
PROTOCOLS TAS 201-94, TAS 202-94, AND TAS 203-94

JOHN E. SCATES, PE
2560 KING ARTHUR BLVD, STE 124-54
LEWISVILLE, TX 75056
FL PE 51737 / TX PE 56308/F-2203



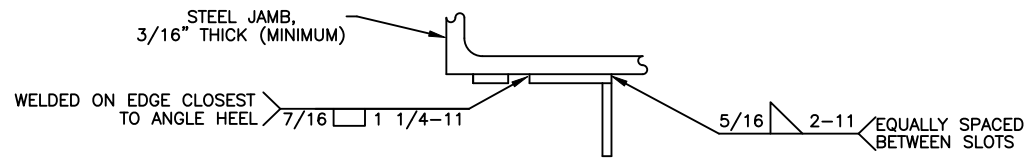
THE DRAWINGS AND ALL OTHER INFORMATION CONTAINED HEREIN ARE THE CONFIDENTIAL AND PROPRIETARY PROPERTY OF OVERHEAD DOOR CORPORATION AND ITS AFFILIATED COMPANIES. THIS DRAWING AND INFORMATION, IN WHOLE OR IN PART, MAY NOT BE COPIED IN ANY MANNER OR DISCLOSED TO ANYONE WITHOUT THE PRIOR WRITTEN CONSENT OF OVERHEAD DOOR CORPORATION. NO DISCLOSURE OF ANY OF THIS DRAWING OR INFORMATION IS INTENDED TO OPERATE AS A LICENSE OR AUTHORIZATION TO USE IT FOR ANY PURPOSE WITHOUT THE SPECIFIC WRITTEN CONSENT OF OVERHEAD DOOR CORPORATION.

REF DWG	USED ON	HOLE DIAMETER TOLERANCES UNLESS OTHERWISE SPECIFIED	WHOLE NUMBERS: ± .25 X ± .1 .XX ± .03 .XXX ± .010 ANGLES: ± .5°	FINISH S	UNIT OF MEASURE N/A	MATERIAL 4	NAME D WARNER	DATE 2/26/09	DRAWING TITLE SERIES 635, ROLLING FIRE DOOR 14' MIAMI-DADE COUNTY
		ASME Y14.100 AND Y14.5 APPLY, UNLESS OTHERWISE SPECIFIED DIMENSIONS ARE IN U.S. CUSTOMARY UNITS.					CHECKED BY: M SAWICKI	8/24/09	DRAWING NUMBER D-308232
							APPROVED BY: S FOENG	9/23/09	SCALE: NONE SHEET 1 OF 2

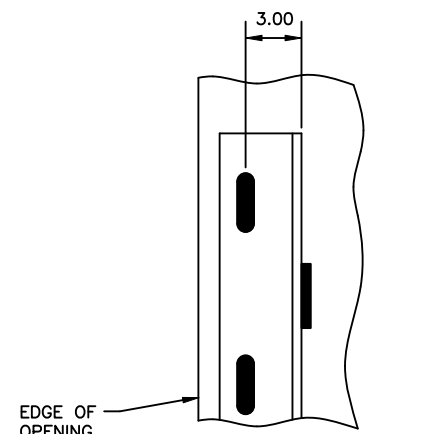
8 | 7 | 6 | 5 | 4 | 3 | 2 | 1

NOTES

- REFER TO DRAWING 308672-0001 FOR TAG DETAILS.
- FASTENER FOR TAG IS P/N 080276-1004(STEEL DRIVE SCREW). TAG WILL BE MOUNTED IN THE MIDDLE OF THE BOTTOM BAR.

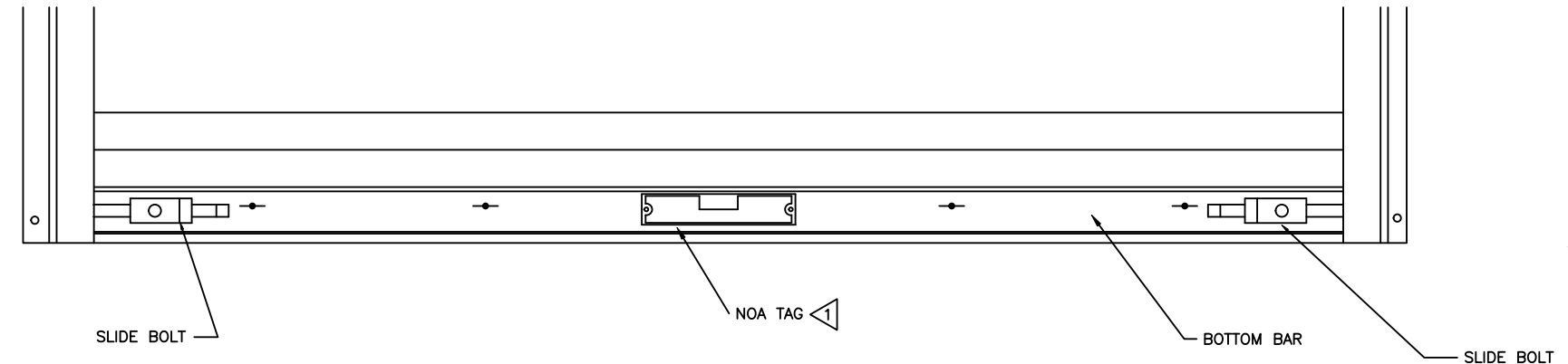


TOP VIEW



FRONT VIEW OF WALL ANGLE

DETAILS FOR WELDING "E" GUIDES TO STEEL JAMBS



DETAIL "E" SCALE: 4/1

JOHN E. SCATES, PE
2560 KING ARTHUR BLVD, STE 124-54
LEWISVILLE, TX 75056
FL PE 51737 / TX PE 56308/F-2203

THE DRAWINGS AND ALL OTHER INFORMATION CONTAINED HEREIN ARE THE CONFIDENTIAL AND PROPRIETARY PROPERTY OF OVERHEAD DOOR CORPORATION AND ITS AFFILIATED COMPANIES. THIS DRAWING AND INFORMATION, IN WHOLE OR IN PART, MAY NOT BE COPIED IN ANY MANNER OR DISCLOSED TO ANYONE WITHOUT THE PRIOR WRITTEN CONSENT OF OVERHEAD DOOR CORPORATION. NO DISCLOSURE OF ANY OF THIS DRAWING OR INFORMATION IS INTENDED TO OPERATE AS A LICENSE OR AUTHORIZATION TO USE IT FOR ANY PURPOSE WITHOUT THE SPECIFIC WRITTEN CONSENT OF OVERHEAD DOOR CORPORATION.									
REF DWG	USED ON	THIRD ANGLE PROJECTION	TOLERANCES UNLESS OTHERWISE SPECIFIED		FINISH 5	MATERIAL 4	DRAWN BY D WARNER	DATE 2/26/09	DRAWING TITLE SERIES 635, ROLLING FIRE DOOR 14' MIAMI-DADE COUNTY
			HOLE DIAMETER	WHOLE NUMBERS: ± .25					
			UNDER .251 +.004/- .003	.X ± .1			CHECKED BY: M SAWICKI	8/24/09	DRAWING NUMBER D-308232
			.251 TO .500 +.006/- .003	.XX ± .03			APPROVED BY: S FOENG	9/23/09	SCALE: NONE
			OVER .500 +.008/- .003	.XXX ± .010					SHEET 2 OF 2
			FRACTIONS ± 1/16	ANGLES: ± .5°					

8 | 7 | 6 | 5 | 4 | 3 | 2 | 1