

8

7

6

5

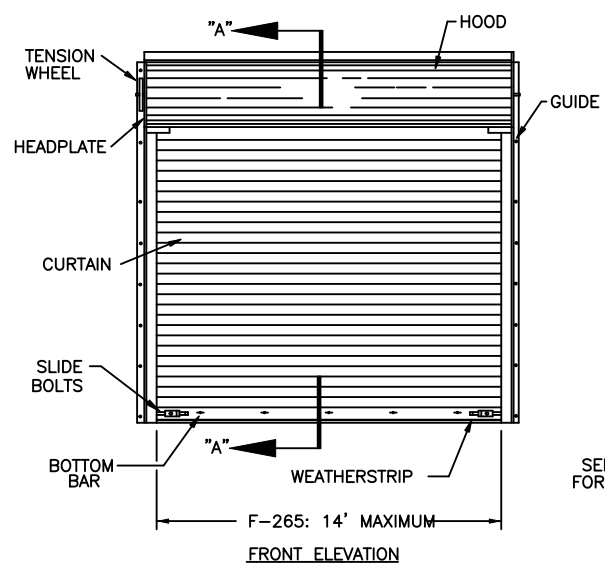
4

3

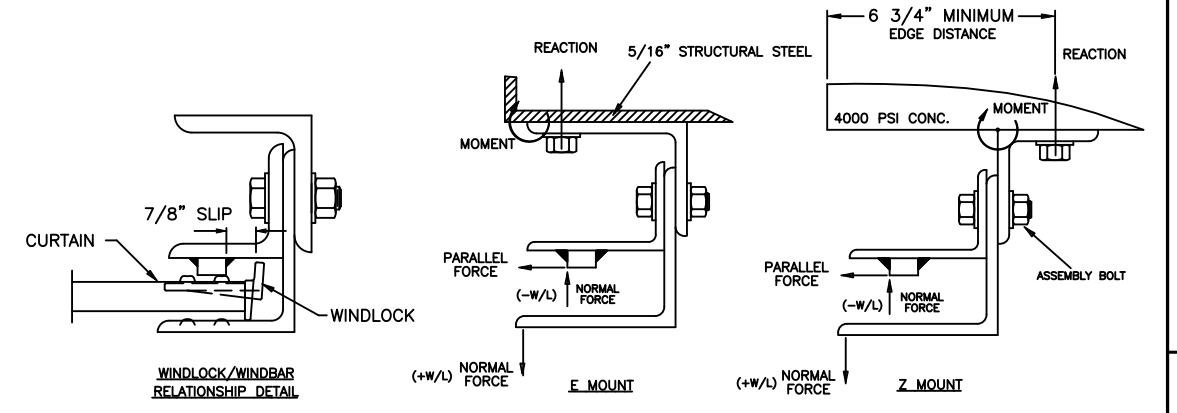
2

1

- NOTES
- (-W/L) = NEGATIVE WINDLOAD
(+W/L) = POSITIVE WINDLOAD
 - WALL ANGLES MAY BE WELDED TO STEEL JAMB.
USE MIN 60XX ELECTRODE
SEE SHEET 2 FOR WELD DETAIL
 - RATED DESIGN LOAD ±65 PSF.
 - CURTAIN MATERIAL: ASTM A-653
GUIDE MATERIAL: ASTM A-36
 - CURTAIN MATERIAL SHALL BE GALVANIZED ACCORDING TO ASTM A-525 TO G40 (MINIMUM).
 - THE DOOR MUST BE INSTALLED WITH THE TENSION WHEEL FACING THE INSIDE OF THE BUILDING.
 - SLIDE BOLTS MUST BE ENGAGED AND CHAIN MUST BE HOOKED WHEN HURRICANE WINDS ARE ANNOUNCED
 - WINDLOCK MATERIAL: LOW CARBON CAST STEEL, GRADE 70-46 (485-250) PER ASTM A27. MIN TENSILE 70-KSI MIN YIELD 36-KSI. MIN ELONG 22%
 - WINDLOCKS ATTACHED TO EACH SLAT (CONTINUOUS)
 - RIVET SPECIFICATIONS:
1/4" DIAMETER RIVET, MINIMUM 1006 LOW-CARBON STEEL.
 - OPERATING (ROLL-UP) MECHANISM IS NOT INCLUDED IN THIS APPROVAL.
IT MUST BE CERTIFIED BY AN INDEPENDANT TESTING AGENCY, IF REQUIRED.
 - COMPLIES WITH IBC/IRC 2018.

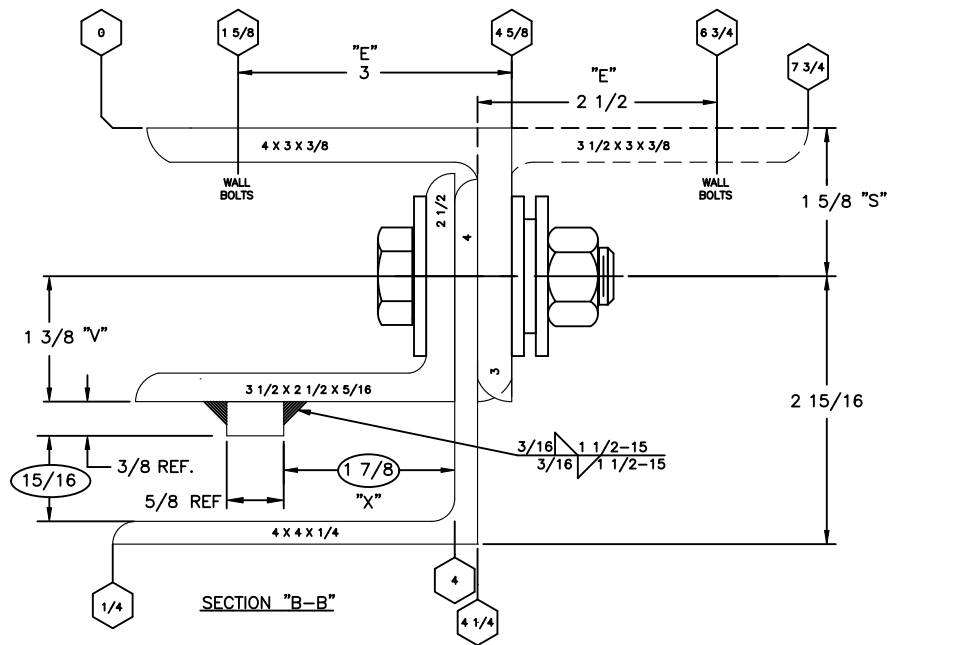
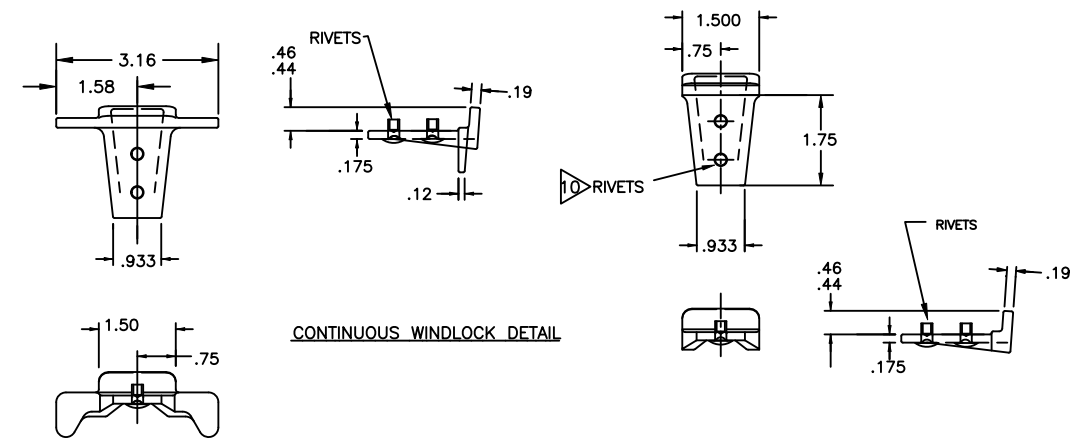


HOT ROLLED ANGLES



REVISIONS				
REV	DESCRIPTION	DATE	APPROVAL	
502235	D REV PER ER	7/18/13	MS	
502222	E REV PER ER	9/20/13	MS	
32787	F REV PER PCR	5/31/22	DG	

C



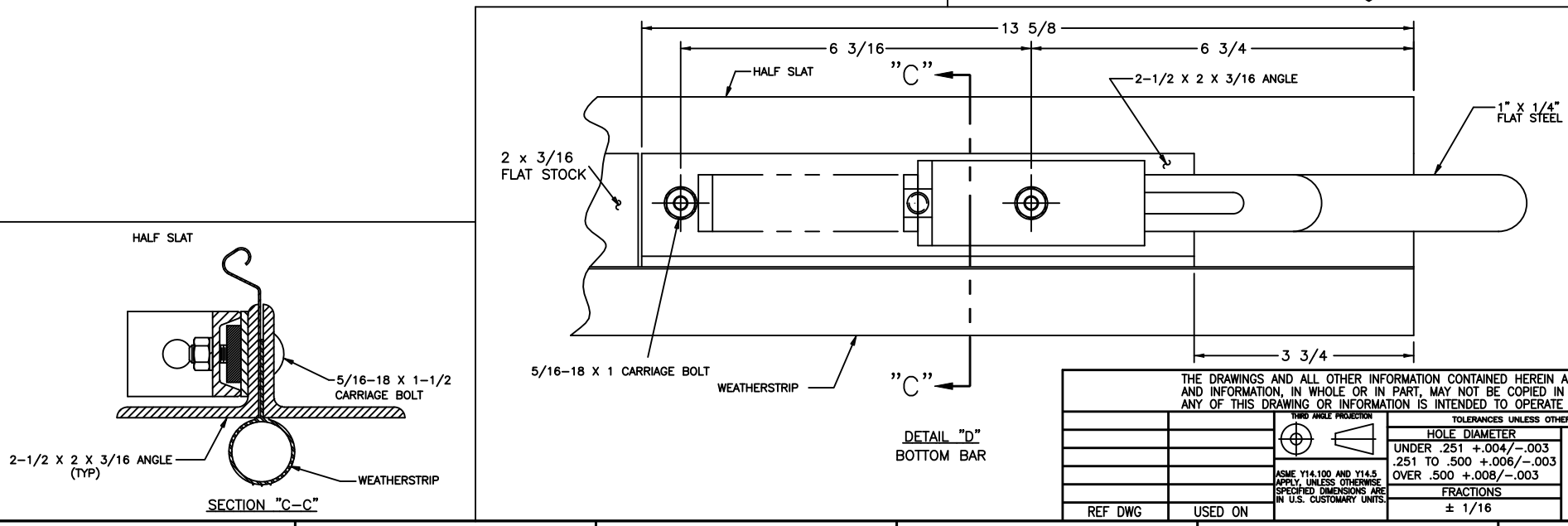
PER FT DOOR HEIGHT	(E-MOUNT) LOADS	(Z-MOUNT) LOADS
REACTION (LBS)	5055	2591
NORMAL (LBS)	455	455
PARALLEL (LBS)	1548	1548
MOMENT (INLBS)	6647	6476

	ASSEMBLY BOLT	WALL BOLT STEEL JAMB	* WALL BOLT CONCRETE JAMB
F-265	5/8" GRADE 5, 18" O.C.	1/2" GRADE 5, 12" O.C.	5/8", 5 1/2" EFF. EMBED HILTI KBT22 OR EQUIVALENT 8" O.C.

* 4000 PSI MINIMUM AND 6-3/4" EDGE DISTANCE FOR ANCHORS
MINIMUM 9" CONCRETE THICKNESS
NOTE: FOR DETAILS ON WELDING GUIDES TO STEEL JAMBS SEE SHEET 2.

B

A



F-265 SLAT
GAUGE OPTIONS: 22**
** TESTED IN ACCORDANCE WITH DADE COUNTY PROTOCOLS TAS 201-94, TAS 202-94, AND TAS 203-94

SERIES 630/631/634 ARE EQUIVALENT CONSTRUCTION

JOHN E. SCATES, PE
2560 KING ARTHUR BLVD, STE 124-54
LEWISVILLE, TX 75056
FL PE 51737 / TX PE 56308/F-2203

THE DRAWINGS AND ALL OTHER INFORMATION CONTAINED HEREIN ARE THE CONFIDENTIAL AND PROPRIETARY PROPERTY OF OVERHEAD DOOR CORPORATION AND ITS AFFILIATED COMPANIES. THIS DRAWING AND INFORMATION, IN WHOLE OR IN PART, MAY NOT BE COPIED IN ANY MANNER OR DISCLOSED TO ANYONE WITHOUT THE PRIOR WRITTEN CONSENT OF OVERHEAD DOOR CORPORATION. NO DISCLOSURE OF ANY OF THIS DRAWING OR INFORMATION IS INTENDED TO OPERATE AS A LICENSE OR AUTHORIZATION TO USE IT FOR ANY PURPOSE WITHOUT THE SPECIFIC WRITTEN CONSENT OF OVERHEAD DOOR CORPORATION.

REF DWG	USED ON	HOLE DIAMETER UNDER .251 +.004/- .003 .251 TO .500 +.006/- .003 OVER .500 +.008/- .003	WHOLE NUMBERS: ± .25 .X ± .1 .XX ± .03 .XXX ± .010 ANGLES: ± .5°	FINISH 5	UNIT OF MEASURE N/A	MATERIAL 4	DATE 2/26/09	DRAWING TITLE SERIES 630/631/634, ROLLING FIRE DOOR 14' MIAMI-DADE COUNTY
							DRAWN BY: D WARNER	DRAWING NUMBER D-308231
							CHECKED BY: M SAWICKI	SHEET 1 OF 2
							APPROVED BY: S FOENG	

