

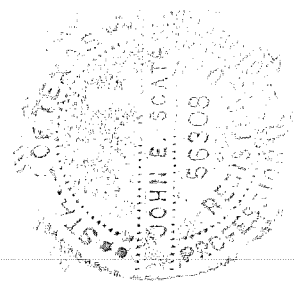
Window options (max 24.1 / - 36.7 psf)  
 1/8" DSB  
 1/4" Tempered Glass  
 7/16" Insulated Glass  
 7/16" Tempered Insulated Glass

Door Height	Section	Quantity	Strut	Thk Brkt	Per Side
6'-0" to 8'-0"	4	2	3		
8'-3" to 10'-0"	5	3	4		
10'-3" to 12'-0"	6	4	5		
12'-3" to 14'-0"	7	5	6		
14'-3" to 16'-0"	8	6	8		
16'-3" to 18'-0"	9	7	9		
18'-3" to 20'-0"	10	8	10		
20'-3" to 22'-0"	11	9	12		
22'-3" to 24'-0"	12	10	13		

Track bracket quantities shown are for use with grade 2 or better spruce-pine-fir (SPF) or southern pine jambs.

Supplemental Instructions contain details for doors up to 24'-0" high. These are required in addition to this drawing for installation. Always use supplemental instructions in addition to this drawing during door installation.

		SOLE NIS DATE 2-12-2013
Models:	3220, 3221, 3222, 3240, 3241, 3242, 3250, 3251, 3252	
	39.7 (psf) / - 60.5 (psf) at 06'-02" through 17.3 (psf) / - 26.3 (psf) at 12'-00"	
C.H.I. Drawing: TZ5-10-61313 page 1_of_2		



*John E. Scates*  
 2/15/13  
 John E. Scates, P.E.  
 3121 Fairgate Drive  
 Carrollton, Texas 75007  
 TXPE 56308, F-2203

Professional Engineer's seal provided only for verification of windload construction details

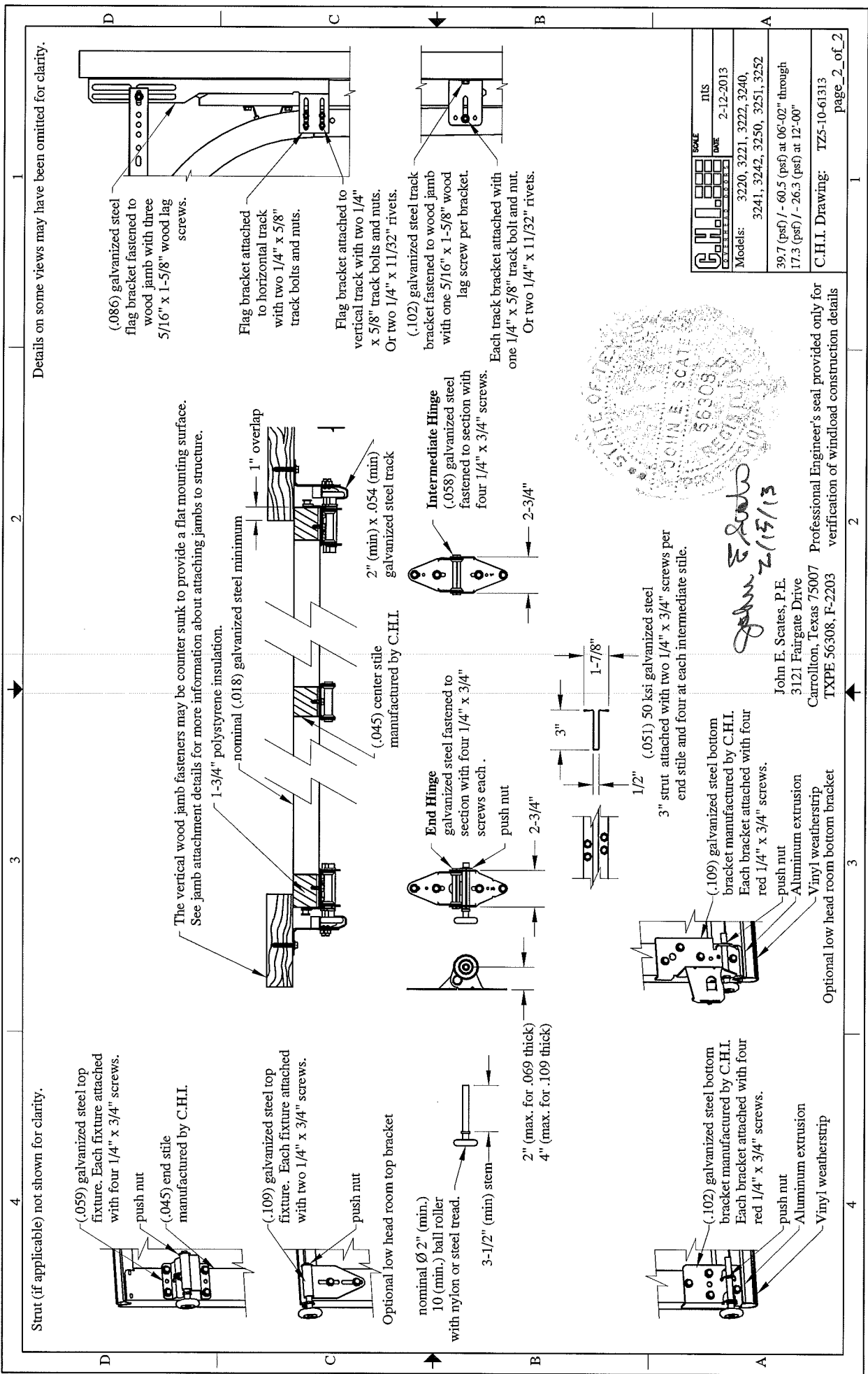
This door has been evaluated per ASCE 7-02 & 7-05 as referenced by 2006 IBC, 1609 & 2006 IRC 301, in accordance with ANSI/DASMA 108-02, 108-05, & ASTM E330-02. Design Pressures (DP) typically meet requirements for the following exposure B wind speeds. These wind speeds are for 8' high doors on buildings with a flat roof height less than 30 feet.

Door Width	With windows		No windows		Center Stiles
	Design Pressure	Exp B	Design Pressure	Exp B	
12'-00"	17.3 / - 26.3 (psf)	111 (mph)	17.3 / - 26.3 (psf)	111 (mph)	2
11'-02"	20.0 / - 30.4 (psf)	118 (mph)	20.0 / - 30.4 (psf)	118 (mph)	2
10'-06"	22.6 / - 34.4 (psf)	126 (mph)	22.6 / - 34.4 (psf)	126 (mph)	2
10'-02"	24.1 / - 36.7 (psf)	130 (mph)	24.1 / - 36.7 (psf)	130 (mph)	2
09'-02"	24.1 / - 36.7 (psf)	129 (mph)	26.7 / - 40.7 (psf)	136 (mph)	1
08'-02"	24.1 / - 36.7 (psf)	129 (mph)	30.0 / - 45.7 (psf)	144 (mph)	1
07'-02"	24.1 / - 36.7 (psf)	128 (mph)	34.2 / - 52.1 (psf)	153 (mph)	1
06'-02"	24.1 / - 36.7 (psf)	127 (mph)	39.7 / - 60.5 (psf)	164 (mph)	1

Center stile quantity is minimum per section.

Supporting structural elements to be designed by registered professional engineer for specified wind loads. If door is not electrically operated, a lock must be installed.

Door height: 24'-0" max  
 Section height: 24" max



Strut (if applicable) not shown for clarity.

(.059) galvanized steel top fixture. Each fixture attached with four 1/4" x 3/4" screws.

push nut  
(.045) end stile manufactured by C.H.I.

(.109) galvanized steel top fixture. Each fixture attached with two 1/4" x 3/4" screws.

push nut

Optional low head room top bracket

nominal Ø 2" (min.) 10 (min.) ball roller with nylon or steel tread.

3-1/2" (min) stem

2" (max. for .069 thick)  
4" (max. for .109 thick)

The vertical wood jamb fasteners may be counter sunk to provide a flat mounting surface. See jamb attachment details for more information about attaching jambs to structure.

1-3/4" polystyrene insulation.

nominal (.018) galvanized steel minimum

1" overlap

2" (min) x .054 (min) galvanized steel track

(.045) center stile manufactured by C.H.I.

End Hinge galvanized steel fastened to section with four 1/4" x 3/4" screws each.

push nut

2-3/4"

Intermediate Hinge (.058) galvanized steel fastened to section with four 1/4" x 3/4" screws.

2-3/4"

(.109) galvanized steel bottom bracket manufactured by C.H.I. Each bracket attached with four red 1/4" x 3/4" screws.

push nut

Aluminum extrusion

Vinyl weatherstrip

3" strut attached with two 1/4" x 3/4" screws per end stile and four at each intermediate stile.

1/2" (.051) 50 ksi galvanized steel

3" strut attached with two 1/4" x 3/4" screws per end stile and four at each intermediate stile.

(.102) galvanized steel bottom bracket manufactured by C.H.I. Each bracket attached with four red 1/4" x 3/4" screws.

push nut

Aluminum extrusion

Vinyl weatherstrip

Details on some views may have been omitted for clarity.

(.086) galvanized steel flag bracket fastened to wood jamb with three 5/16" x 1-5/8" wood lag screws.

Flag bracket attached to horizontal track with two 1/4" x 5/8" track bolts and nuts.

Flag bracket attached to vertical track with two 1/4" x 5/8" track bolts and nuts.  
Or two 1/4" x 11/32" rivets.

(.102) galvanized steel track bracket fastened to wood jamb with one 5/16" x 1-5/8" wood lag screw per bracket.

Each track bracket attached with one 1/4" x 5/8" track bolt and nut.  
Or two 1/4" x 11/32" rivets.

	SCALE	NTS
	DATE	2-12-2013
Models:		3220, 3221, 3222, 3240,
		3241, 3242, 3250, 3251, 3252
39.7 (psf) / - 60.5 (psf) at 06'-02" through		
17.3 (psf) / - 26.3 (psf) at 12'-00"		
C.H.I. Drawing: TZ5-10-61313		
		page_2_of_2

John E. Scates, P.E.  
3121 Fairgate Drive  
Carrollton, Texas 75007  
TXPE 56308, P-2203

Professional Engineer's seal provided only for verification of windload construction details

Optional low head room bottom bracket