

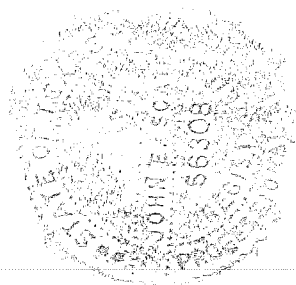
Window options (max 47.2 / - 53.1 psf)
 1/8" DSB
 1/4" Tempered Glass
 7/16" Insulated Glass
 7/16" Tempered Insulated Glass

Door Height	Section Quantity	Strut Quantity	Trk Brkt Per Side
6'-0" to 8'-0"	4	4	4
8'-3" to 10'-0"	5	5	6
10'-3" to 12'-0"	6	6	7
12'-3" to 14'-0"	7	7	8
14'-3" to 16'-0"	8	8	10
16'-3" to 18'-0"	9	9	11
18'-3" to 20'-0"	10	10	13
20'-3" to 22'-0"	11	11	15
22'-3" to 24'-0"	12	12	17

Track bracket quantities shown are for use with grade 2 or better southern pine jambs. When using softer wood species like spruce-pine-fir (SPF) use the quantity of track brackets specified in the chart plus two track brackets per side.

Supplemental instructions contain details for doors up to 24'-0" high. These are required in addition to this drawing for installation. Always use supplemental instructions in addition to this drawing during door installation.

Model:	INS
3220, 3221, 3222, 3240,	2-12-2013
3241, 3242, 3250, 3251, 3252	
62.5 (psf) / - 70.3 (psf) at 06'-02" through 34.9 (psf) / - 39.2 (psf) at 09'-06"	
C.H.I. Drawing: TZ11-08-61313 page 1_of_2	



John E. Scates
 2/13/13
 John E. Scates, P.E.
 3121 Fairgate Drive
 Carrollton, Texas 75007
 TXPE 56308, F-2203

This door has been evaluated per ASCE 7-02 & 7-05 as referenced by 2006 IBC 1609 & 2006 IRC 301, in accordance with ANSI/DASMA 108-02, 108-05, & ASTM E330-02.

Design Pressures (DP) typically meet requirements for the following exposure B wind speeds. These wind speeds are for 8' high doors on buildings with a flat roof height less than 30 feet.

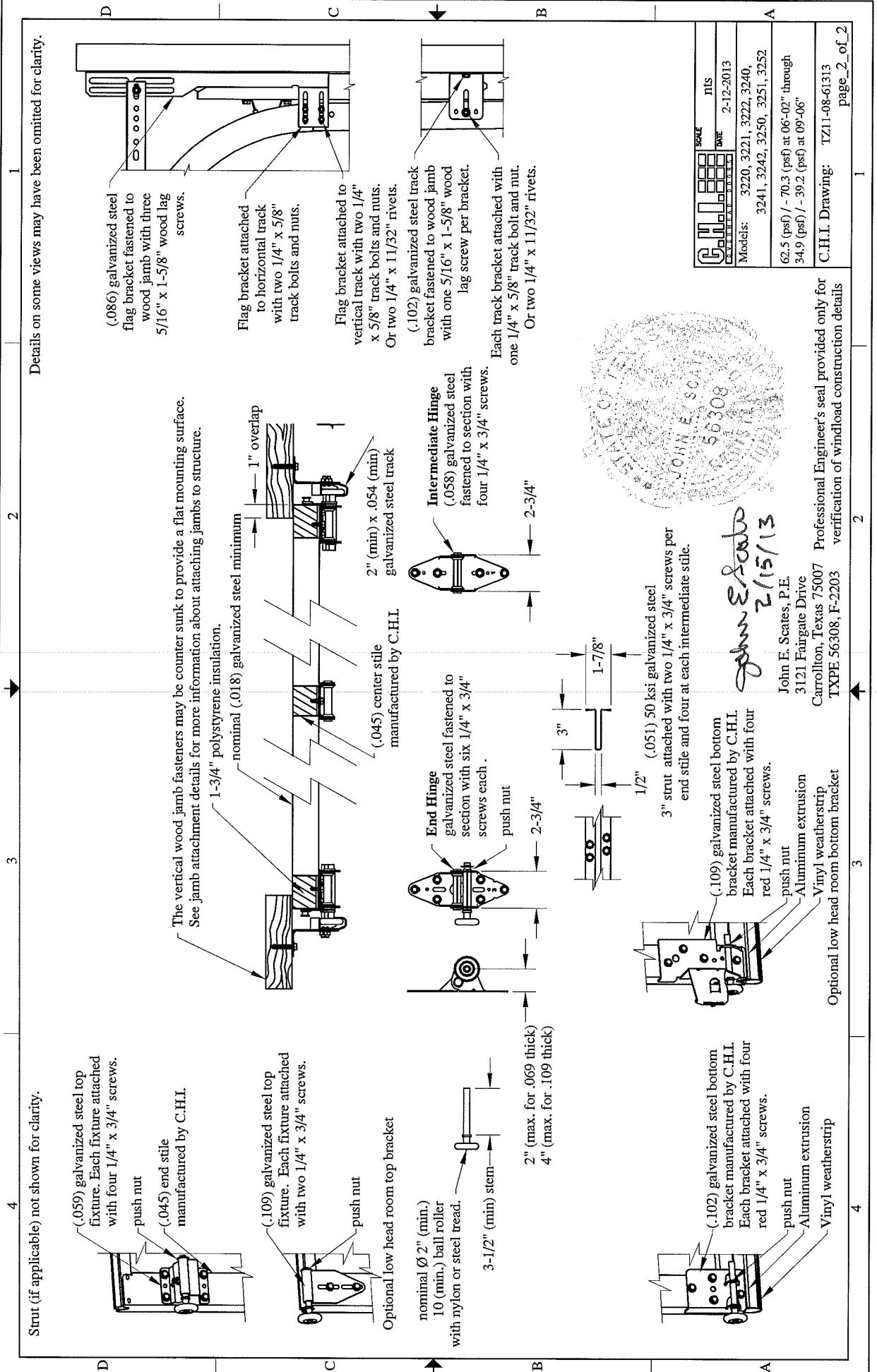
Door Width	With windows		No windows		Center Stiles
	Design Pressure	Exp B	Design Pressure	Exp B	
09'-06"	34.9 / - 39.2 (psf)	156 (mph)	34.9 / - 39.2 (psf)	156 (mph)	1
09'-02"	37.5 / - 42.1 (psf)	161 (mph)	37.5 / - 42.1 (psf)	161 (mph)	1
08'-02"	47.2 / - 53.1 (psf)	180 (mph)	47.2 / - 53.1 (psf)	180 (mph)	1
07'-02"	47.2 / - 53.1 (psf)	179 (mph)	53.8 / - 60.5 (psf)	190 (mph)	1
06'-02"	47.2 / - 53.1 (psf)	178 (mph)	62.5 / - 70.3 (psf)	203 (mph)	1

Center stile quantity is minimum per section.

Supporting structural elements to be designed by registered professional engineer for specified wind loads. If doors are not electrically operated, a lock must be installed.

Door height: 24'-0" max
 Section height: 2'-4" max

Professional Engineer's seal provided only for verification of windload construction details



Details on some views may have been omitted for clarity.

Strut (if applicable) not shown for clarity.

(.059) galvanized steel top fixture. Each fixture attached with four 1/4" x 3/4" screws.

push nut
(.045) end stile manufactured by C.H.I.

(.109) galvanized steel top fixture. Each fixture attached with two 1/4" x 3/4" screws.

push nut

Optional low head room top bracket

nominal Ø 2" (min.)
10 (min.) ball roller with nylon or steel tread.

3-1/2" (min) stem

2" (max. for .069 thick)
4" (max. for .109 thick)

The vertical wood jamb fasteners may be counter sunk to provide a flat mounting surface. See jamb attachment details for more information about attaching jambs to structure.

1-3/4" polystyrene insulation.

nominal (.018) galvanized steel minimum

1" overlap

2" (min) x .054 (min) galvanized steel track

(.045) center stile manufactured by C.H.I.

End Hinge galvanized steel fastened to section with six 1/4" x 3/4" screws each.

push nut

2-3/4"

Intermediate Hinge (.058) galvanized steel fastened to section with four 1/4" x 3/4" screws.

2-3/4"

(.102) galvanized steel bottom bracket manufactured by C.H.I. Each bracket attached with four red 1/4" x 3/4" screws.

push nut
Aluminum extrusion
Vinyl weatherstrip

(.109) galvanized steel bottom bracket manufactured by C.H.I. Each bracket attached with four red 1/4" x 3/4" screws.

push nut
Aluminum extrusion
Vinyl weatherstrip

3" strut attached with two 1/4" x 3/4" screws per end stile and four at each intermediate stile.

John E. Scates
2/15/13

John E. Scates, P.E.
3121 Fairgate Drive
Carrollton, Texas 75007
TXPE 56308, F-2203

Optional low head room bottom bracket

(.086) galvanized steel flag bracket fastened to wood jamb with three 5/16" x 1-5/8" wood lag screws.

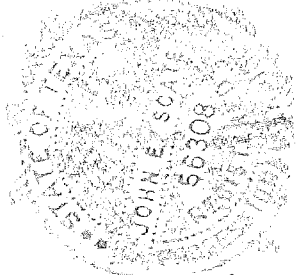
Flag bracket attached to horizontal track with two 1/4" x 5/8" track bolts and nuts.

Flag bracket attached to vertical track with two 1/4" x 5/8" track bolts and nuts.
Or two 1/4" x 11/32" rivets.

(.102) galvanized steel track bracket fastened to wood jamb with one 5/16" x 1-5/8" wood lag screw per bracket.

Each track bracket attached with one 1/4" x 5/8" track bolt and nut.
Or two 1/4" x 11/32" rivets.

	SCALE	NIS
	DATE	2-12-2013
Models:	3220, 3221, 3222, 3240, 3241, 3242, 3250, 3251, 3252	
	62.5 (psf) / - 70.3 (psf) at 06'-02" through 34.9 (psf) / - 39.2 (psf) at 09'-06"	
C.H.I. Drawing:		TZ11-08-61313
		page_2_of_2



Professional Engineer's seal provided only for verification of windload construction details