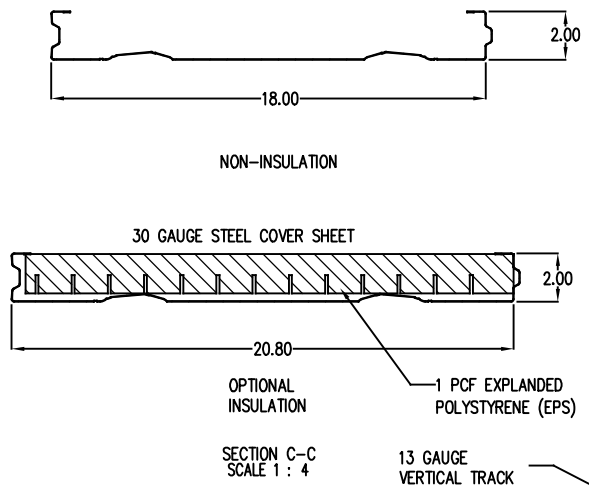
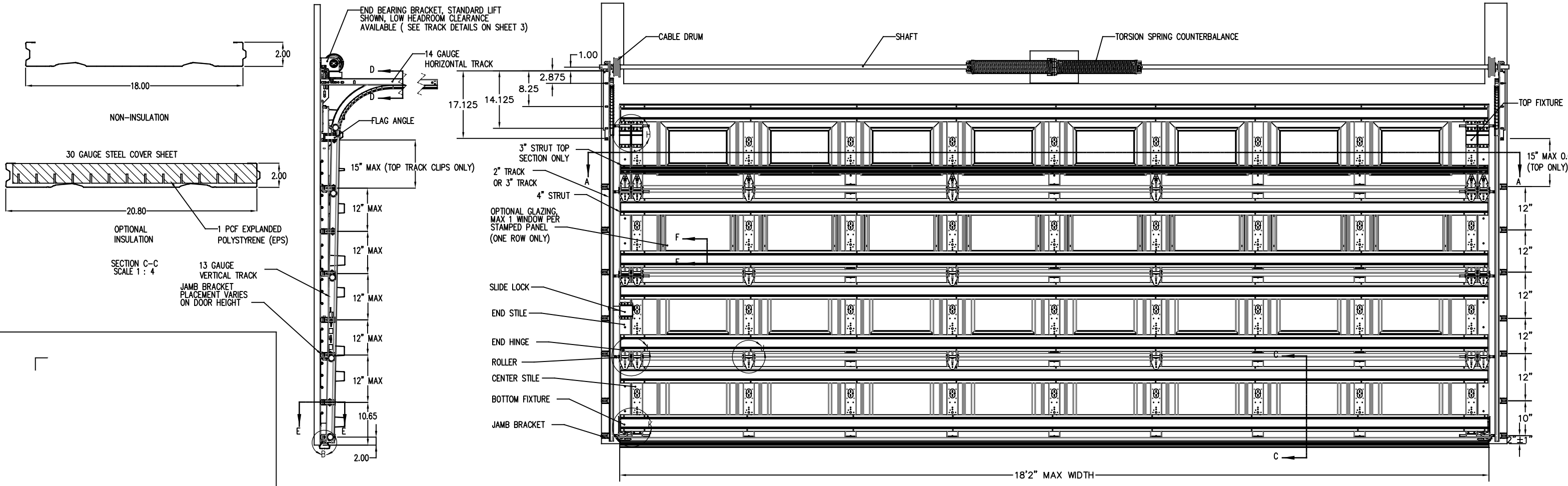
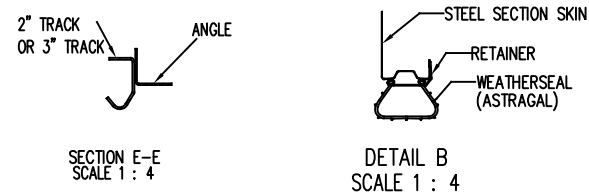
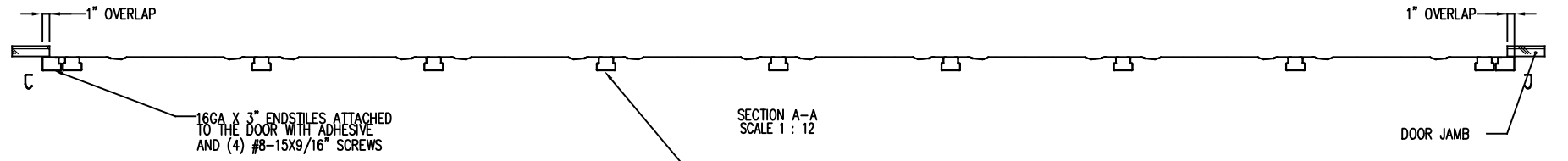


NOTES: (UNLESS OTHERWISE SPECIFIED)

1. RATED DESIGN LOAD +46/-52 PSF.
2. SECTION HEIGHTS MAY VARY TO CREATE VARIOUS DOOR HEIGHTS, 20.8" MAXIMUM SECTION HEIGHT.
3. MINIMUM 1" OVERLAP ON BOTH JAMBS REQUIRED TO MEET NEGATIVE DESIGN PRESSURES.
4. TESTED IN ACCORDANCE WITH DADE COUNTY PROTOCOLS TAS 201-94, TAS 202-94, & TAS 203-94.
5. DOOR SKIN MUST BE 33,000 PSI MIN. YIELD STRENGTH.
6. JAMB LOAD CALCULATIONS:
 $(1/2 \text{ DOOR WIDTH})(1 \text{ FT OF HEIGHT})(\text{DESIGN PRESSURE})$
 $(9.067)(1 \text{ FOOT})(46.00 \text{ AND } -52.00)(417.1/-471.5) \text{ LB.}$
7. JAMB FASTENER REQUIREMENTS:
 $F_x = (1/2 \text{ DOOR WIDTH})(1 \text{ FT OF HEIGHT})(\text{DESIGN PRESSURE})$
 $F_x = 417.1 \text{ LBS.}$
8. DOOR SKIN MATERIAL SHALL BE GALVANIZED ACCORDING TO ASTM A-525 TO G90 MIN, WITH BAKED-ON PRIMER, AND BAKED-ON POLYESTER PAINT TOP COAT.
9. FOR ANCHORING INTO WOOD, USE ONE 5/16" LAG SCREW PER JAMB BRACKET WITH 1-1/2" EMBEDMENT INTO SOUTHERN PINE (G=0.55) OR BETTER.
10. APPROVED INSULATED AND NON-INSULATED: 170 (25GA), 180 (25GA), 0.0209" MIN STEEL.
11. WELD SLOT ON ANGLE AND 3/32" X 1" LONG ON 12" CENTERS. "IF WELDING MOUNTING OPTION IS CHOSEN."
12. LIFT UP MECHANISM—MANUAL, CHAIN LIFT, OR OPERATOR IS NOT PART OF THIS APPROVAL.
13. STANDARD LIFT, HIGH LIFT, VERTICAL LIFT, AND LOW HEADROOM TRACK IS AVAILABLE. FOR LOW HEADROOM LIFT CONDITIONS TOP BRACKET SHALL BE 13 GA LHR 7/4 TOP BRACKET WITH A MIN OF (3) 1/4 - 14 X 7/8" SELF DRILLING CRIMPTITE SCREWS IN LIEU OF THE BRACKET SHOWN ON DRAWING. U-BAR ON TOP SECTION SHALL BE INSTALLED ON TOP OF LHR TOP BRACKETS.
14. ATTACH STRUTS WITH (2) 1/4-14x7/8" SELF DRILLING CRIMPTITE SCREWS AT ALL STILE LOCATIONS, TYP. LOCATED WITHIN 6" , +/- 3" FROM TOP AND BOTTOM OF SECTION.
15. KEY LOCK, SIDE LOCK, OR DRAWBAR OPERATOR REQUIRED.
16. IMPACT RESISTANT GLAZING OPTION— IMPACT RESISTANT GLAZING SYSTEM MAY BE INSTALLED INTERMEDIATE SECTION OR TOP SECTION. GLAZING SHALL BE 1/4" POLYCARBONATE. 13-3/4" X 20-1/8" MAXIMUM SIZE, FASTENED WITH # 8 X 1" SMS: 3X MIN ALONG THE HORIZONTAL AND 2X MIN ALONG THE VERTICAL. SEE DETAIL F-F ON SHEET 2 FOR ASSEMBLY DETAILS.
17. THE DESIGN OF THE SUPPORTING STRUCTURAL ELEMENTS SHALL BE THE RESPONSIBILITY OF THE PROFESSIONAL OF RECORD FOR THE BUILDING OR STRUCTURE AND IN ACCORDANCE WITH CURRENT BUILDING CODES FOR THE LOADS LISTED ON THIS DRAWING.
18. DOORS ARE DESIGNED AND MANUFACTURED TO COMPLY WITH REGULATIONS PER BUILDING CODES: 2018 IRC AND 2018 IBC

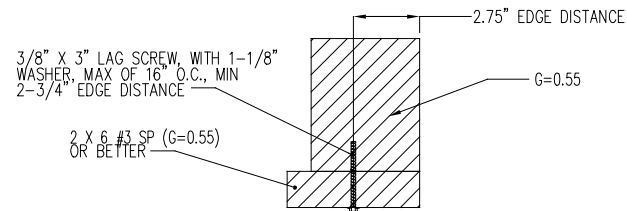
REVISIONS				
ER	REV	DESCRIPTION	DATE	APVL
32537	A	ADD NOTE 18: IBC/IRC	11/30/20	JQ



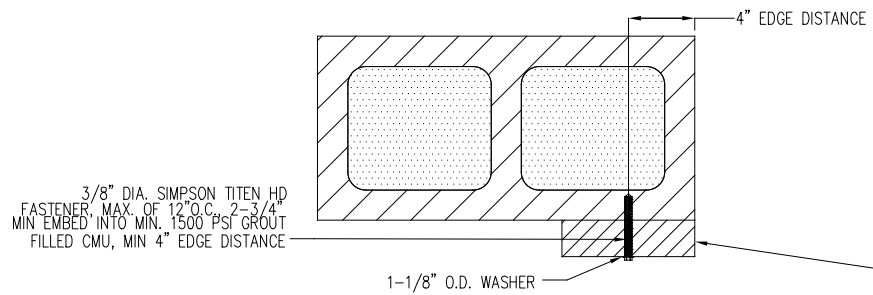
JOHN E. SCATES, PE
 2560 KING ARTHUR BLVD #124-54
 LEWISVILLE, TX 75056
 FL PE 51737 TX PE 56308/F2203
 PROFESSIONAL ENGINEER'S SEAL PROVIDED ONLY FOR VERIFICATION OF WINDLOAD CONSTRUCTION DETAILS.

<p>THIRD ANGLE PROJECTION</p>	<p>UNLESS OTHERWISE SPECIFIED</p> <p>INTERPRET DIMS & TOLS PER ASME Y14.5M</p> <p>ALL DIMS ARE IN INCHES</p> <p>DO NOT SCALE</p> <p>DIMS CIRCLED WITH SYMBOL 'D' ARE CRITICAL TO QUALITY DESIGN FEATURES & MUST MEET APPLICABLE IN-PROCESS INSPECTION STANDARDS.</p>	<p>TOLERANCES:</p> <p>.X = ±.1</p> <p>.XX = ±.03</p> <p>.XXX = ±.010</p> <p>ANGULAR = ±.5°</p> <p>HOLES:</p> <p>< Ø.251 = +.004/- .003</p> <p>Ø.251-Ø.500 = +.006/- .003</p> <p>> Ø.500 = +.008/- .003</p> <p>ALL GEOMETRY GOVERNED BY 3D CAD DATABASE:</p>	<p>APPROVALS</p> <p>DRAWN G.CLARK 4-11-19</p> <p>CHECKED D.KORNISH 2-18-20</p> <p>APPROVED</p> <p>MATERIAL -</p> <p>FINISH -</p>	<p>DATE</p> <p>4-11-19</p> <p>2-18-20</p>	<p>The Genuine. The Original.</p> <p>2501 S, TX-121 BUS LEWISVILLE, TEXAS</p>
			<p>WINDLOAD SPECIFICATION OPTION CODE 1148</p>	<p>DESCRIPTION</p> <p>170/171/175/180/181/185/1400/1500 18'2" MAX WIDTH</p>	

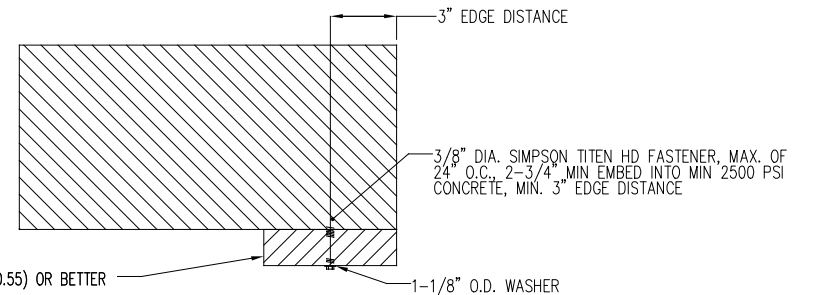
NOTES: (UNLESS OTHERWISE SPECIFIED)



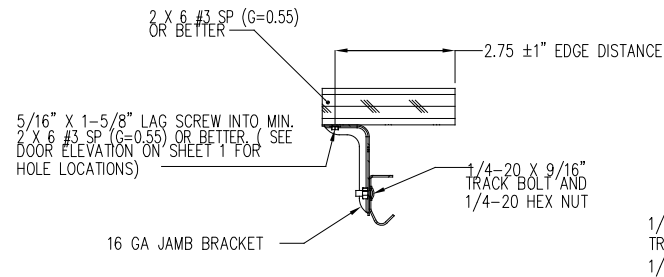
WOOD MOUNTED TO #3 SOUTHERN PINE SUBSTRATE



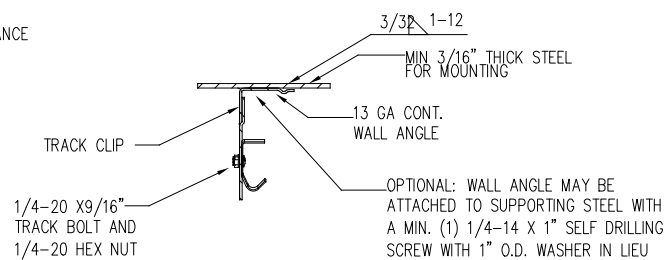
WOOD MOUNTED TO GROUT FILLED MASONRY BLOCK DETAIL



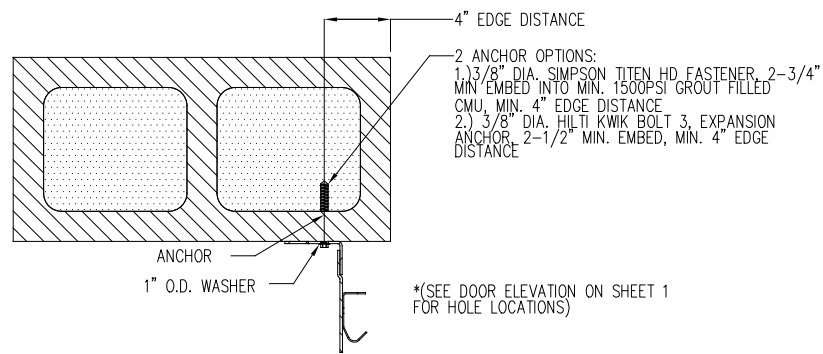
WOOD MOUNTED TO 2500PSI CONCRETE DETAIL



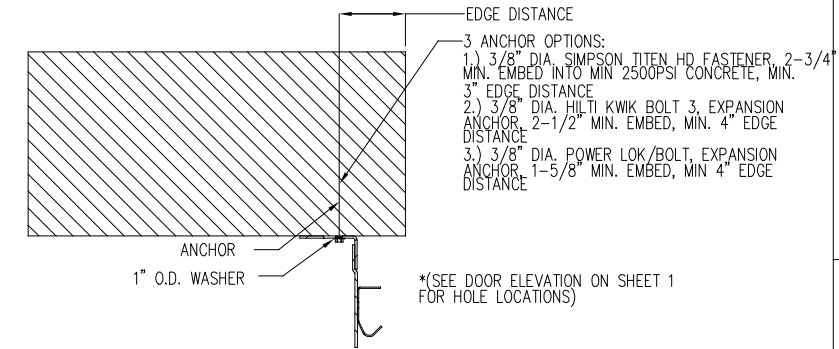
MOUNTING TO WOOD JAMB DETAIL



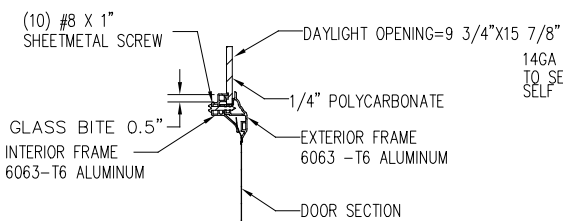
MOUNTING TO STEEL JAMB DETAIL



MOUNTING TO GROUT FILLED MASONRY BLOCK DETAIL

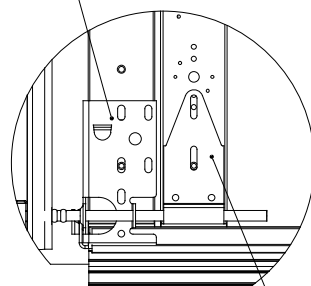


MOUNTING TO 2500PSI CONCRETE DETAIL



WINDOW DETAIL

SECTION F-F
SCALE 1:4



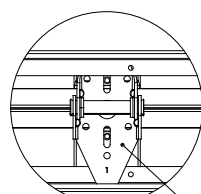
DETAIL K
SCALE 1:4

TYPICAL TRACK AND JAMB FASTENERS DETAIL

JOHN E. SCATES, PE
2560 KING ARTHUR BLVD #124-54
LEWISVILLE, TX 75056
FL PE 51737 TX PE 56308/F2203

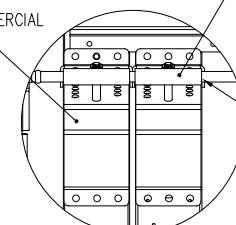
PROFESSIONAL ENGINEER'S SEAL PROVIDED ONLY FOR VERIFICATION OF WINDLOAD CONSTRUCTION DETAILS.

SECTION E - E
SCALE 1:4



DETAIL J
SCALE 1:4

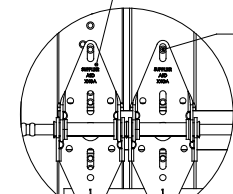
11 GA TOP FIXTURE COMMERCIAL A-FRAME BRACKET



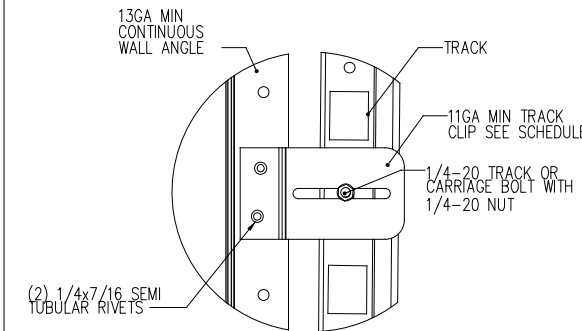
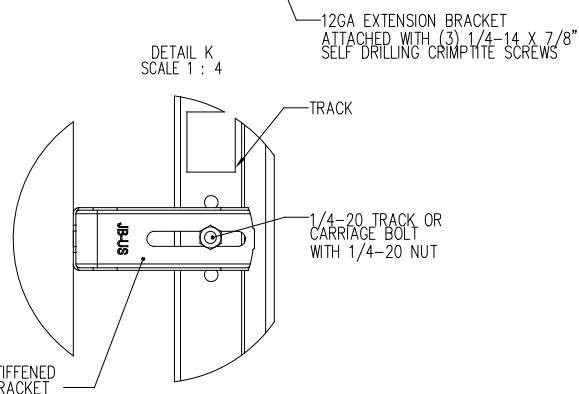
DETAIL H
SCALE 1:4

OPTIONAL WALL ANGLE TRACK

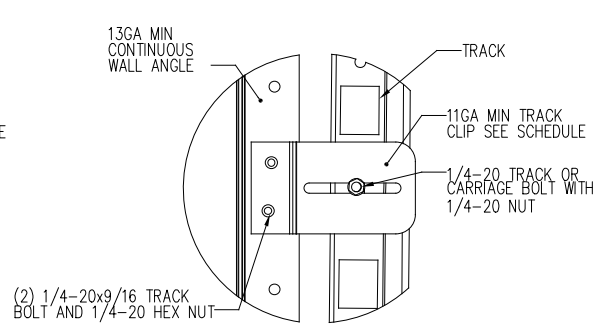
11GA WIDE BODY END HINGES.



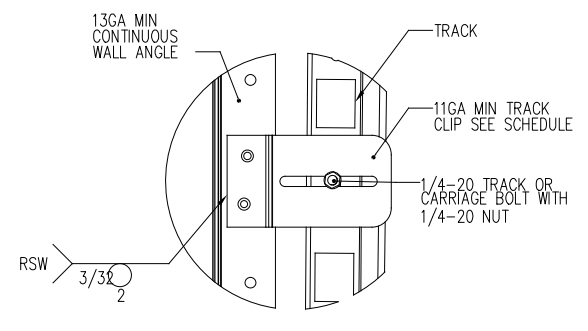
DETAIL I
SCALE 1:4



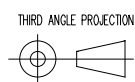
TYPICAL TRACK CLIP RIVETING DETAIL



TYPICAL TRACK CLIP BOLTING DETAIL



TYPICAL TRACK CLIP WELDING DETAIL



UNLESS OTHERWISE SPECIFIED
INTERPRET DIMS & TOLS PER ASME Y14.5M
ALL DIMS ARE IN INCHES
DO NOT SCALE
DIMS CIRCLED WITH SYMBOL 'D' ARE CRITICAL TO QUALITY DESIGN FEATURES & MUST MEET APPLICABLE IN-PROCESS INSPECTION STANDARDS.

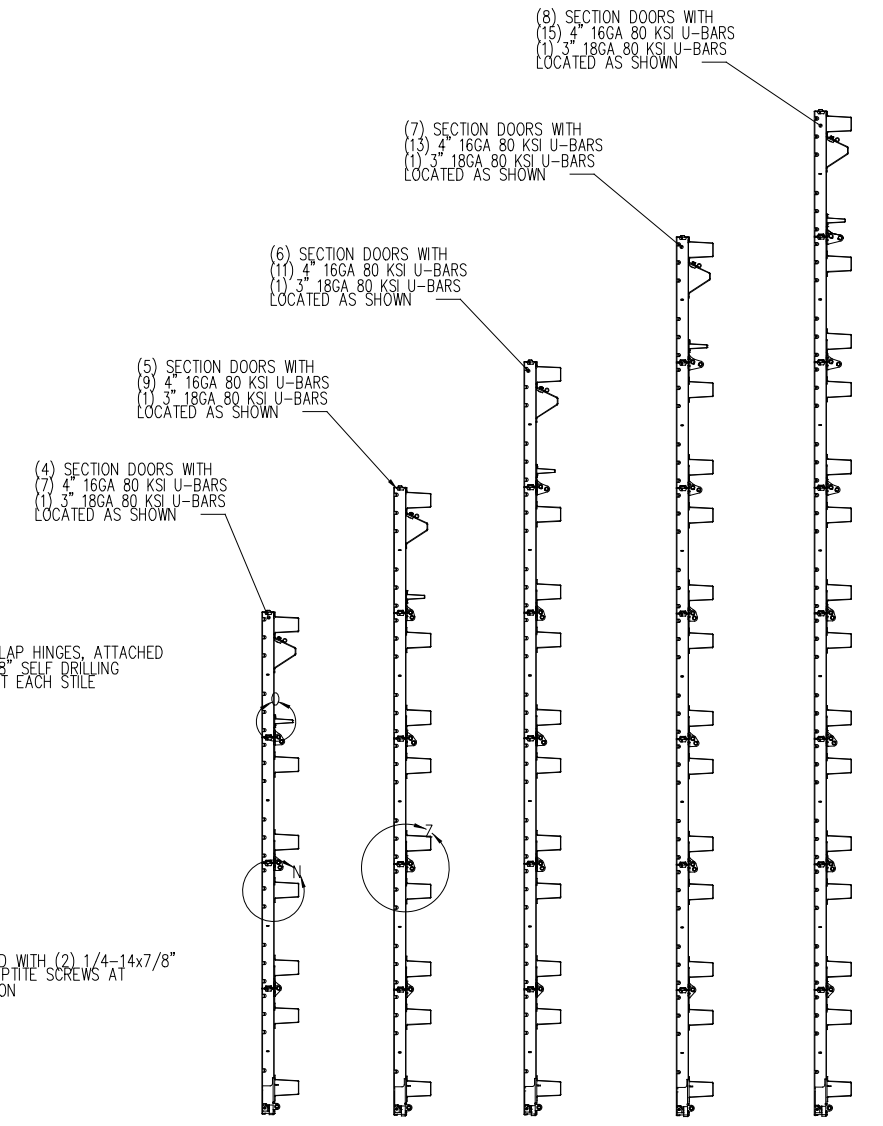
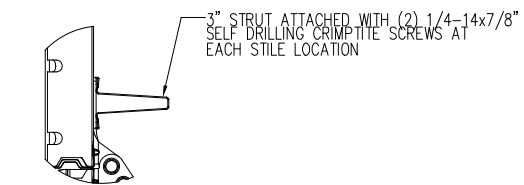
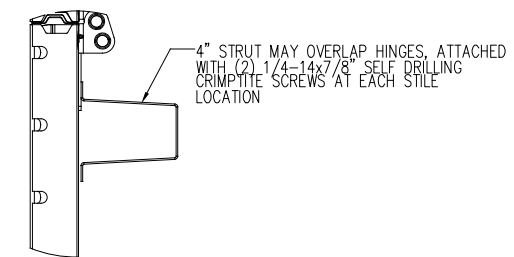
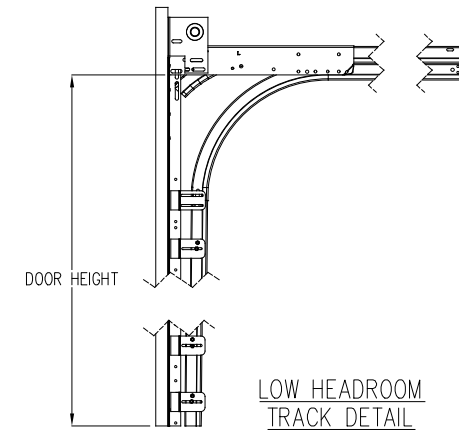
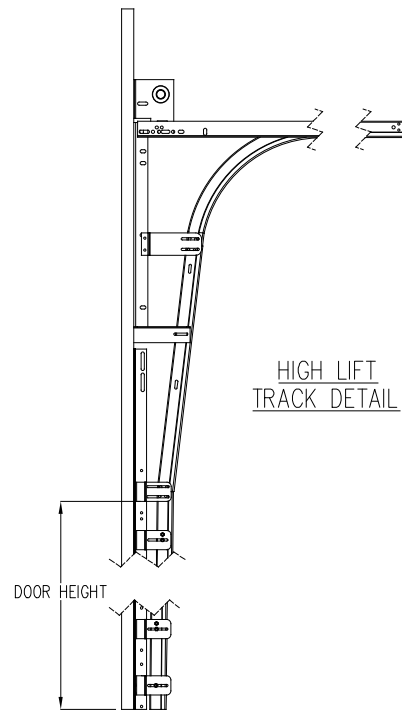
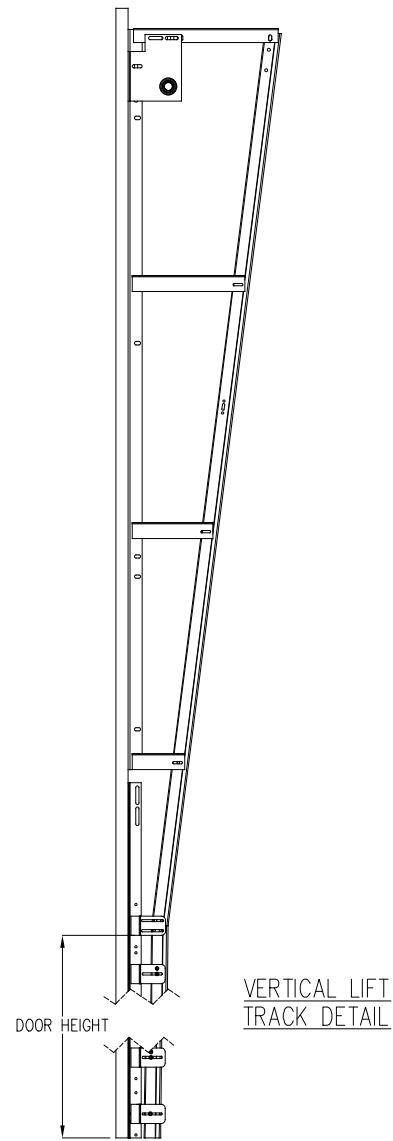
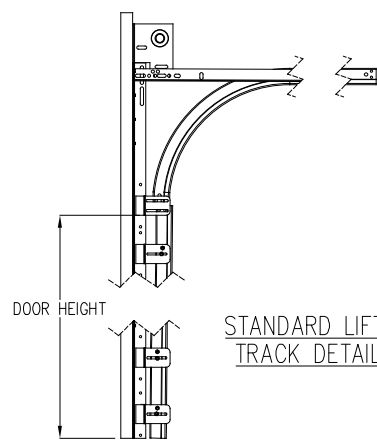
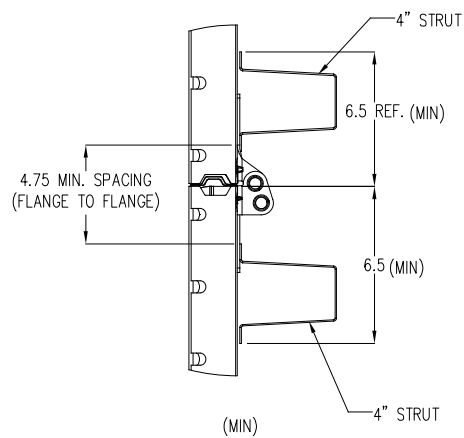
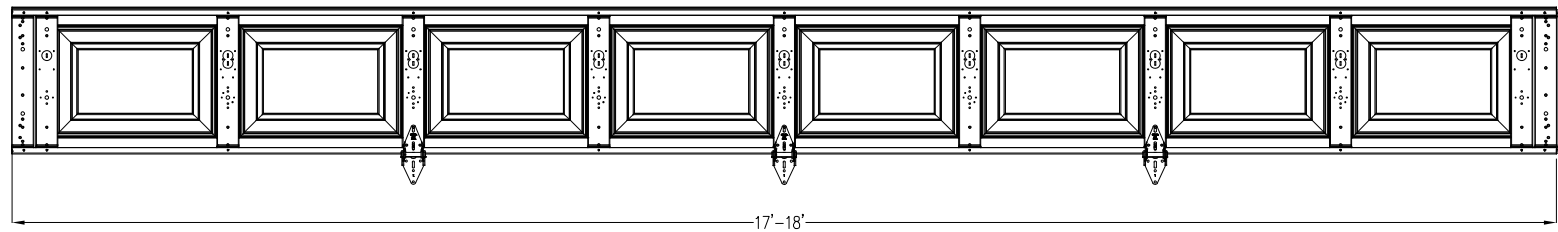
TOLERANCES:
.X = ±.1
.XX = ±.03
.XXX = ±.010
ANGULAR = ±.5°
HOLES:
< Ø.251 = +.004/-0.003
Ø.251-Ø.500 = +.006/-0.003
> Ø.500 = +.008/-0.003
ALL GEOMETRY GOVERNED BY 3D CAD DATABASE:

APPROVALS	DATE
DRAWN G.CLARK	4-11-19
CHECKED D.KORNISH	2-18-20
APPROVED	-
MATERIAL	-
FINISH	-
WINDLOAD SPECIFICATION	OPTION CODE 1148

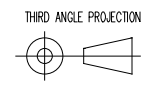
The Genuine. The Original. OVERHEAD DOOR		2501 S, TX-121 BUS LEWISVILLE, TEXAS
DESCRIPTION		
170/171/175/180/181/185/1400/1500 18'2" MAX WIDTH		
SIZE	DWG NO. D-411690	REV A
SCALE 1:12	UOM = EA	SHEET 2 OF 4

NOTES: (UNLESS OTHERWISE SPECIFIED)

CENTER STILE AND INTERMEDIATE HINGE LOCATIONS



JOHN E. SCATES, PE
 2560 KING ARTHUR BLVD #124-54
 LEWISVILLE, TX 75056
 FL PE 51737 TX PE 56308/F2203
 PROFESSIONAL ENGINEER'S SEAL PROVIDED ONLY FOR
 VERIFICATION OF WINDLOAD CONSTRUCTION DETAILS.



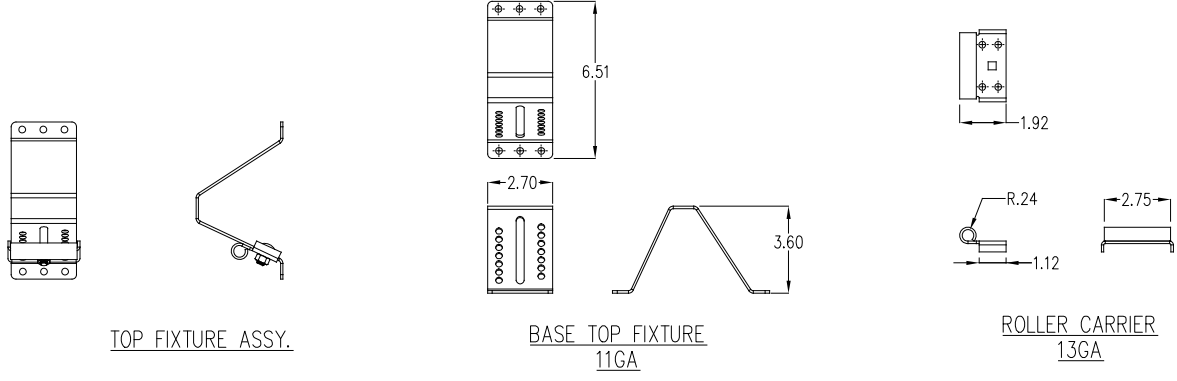
UNLESS OTHERWISE SPECIFIED
 INTERPRET DIMS & TOLS
 PER ASME Y14.5M
 ALL DIMS ARE IN
 INCHES
 DO NOT SCALE
 DIMS CIRCLED WITH SYMBOL 'D'
 ARE CRITICAL TO QUALITY DESIGN
 FEATURES & MUST MEET APPLICABLE
 IN-PROCESS INSPECTION STANDARDS.

TOLERANCES:
 .X = ±.1
 .XX = ±.03
 .XXX = ±.010
 ANGULAR = ±.5°
 HOLES:
 < 0.251 = +.004/- .003
 0.251-0.500 = +.006/- .003
 > 0.500 = +.008/- .003
 ALL GEOMETRY GOVERNED BY 3D CAD DATABASE:

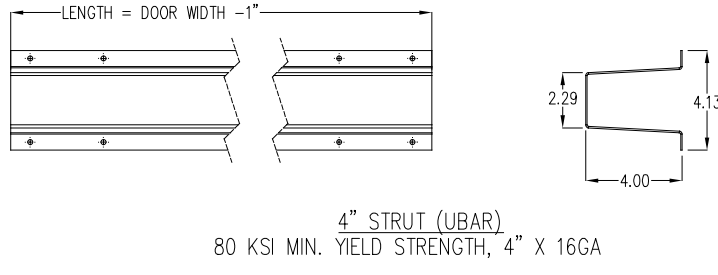
APPROVALS		DATE
DRAWN	G.CLARK	4-11-19
CHECKED	D.KORNISH	2-18-20
APPROVED	-	-
MATERIAL	-	-
FINISH	-	-
WINDLOAD SPECIFICATION		OPTION CODE 1148

The Genuine. The Original. OVERHEAD DOOR		2501 S, TX-121 BUS LEWISVILLE, TEXAS	
DESCRIPTION 170/171/175/180/181/185/ 1400/1500 18'2" MAX WIDTH			
SIZE	DWG NO.	REV	
D	D-411690	A	
SCALE 1:12	UOM = EA	SHEET 3 OF 4	

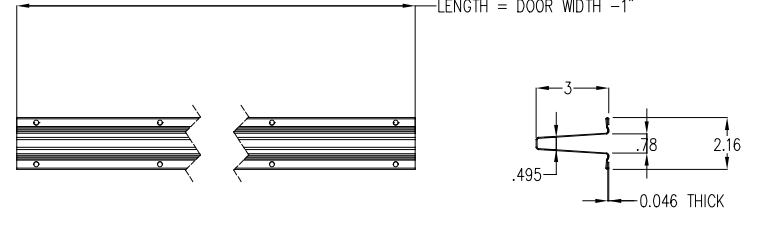
NOTES: (UNLESS OTHERWISE SPECIFIED)
 1. FOR DIMENSIONS AND NOTE REFERENCES, REFER TO INDIVIDUAL DRAWINGS.



TOP FIXTURE DETAILS

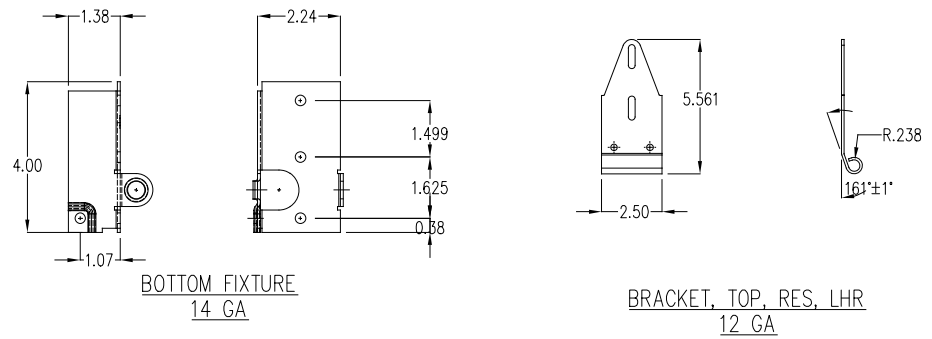


4" STRUT (UBAR)
 80 KSI MIN. YIELD STRENGTH, 4" X 16GA

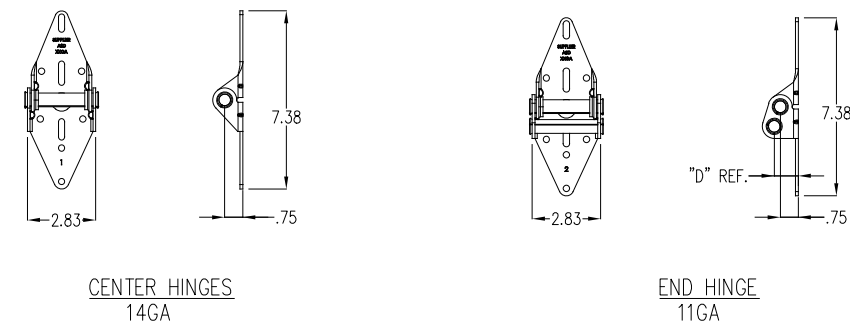


3" STRUT OPEN WL (UBAR)
 80 KSI MIN. YIELD STRENGTH, 3" X 18GA

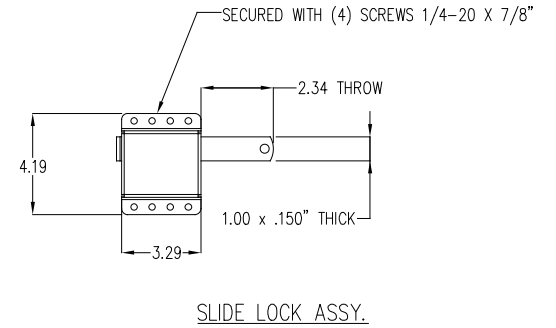
STRUT DETAILS



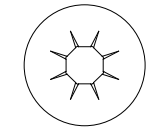
BOTTOM FIXTURE DETAILS



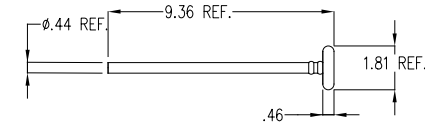
HINGE DETAILS



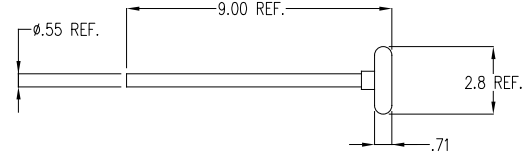
LOCK DETAILS



7/16" STEEL PUSHNUTS

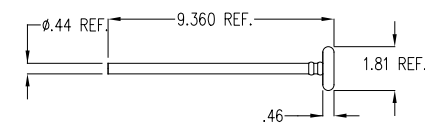


ROLLER ASSY, 2" WL 1144 (STEEL ROLLER)

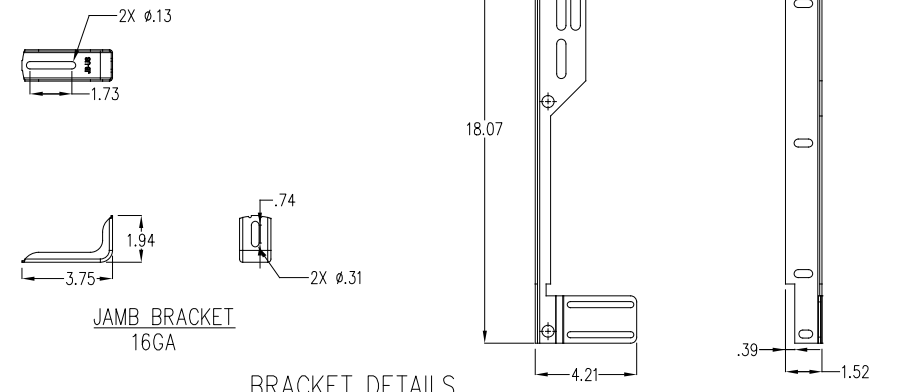


ROLLER ASSY, 3" WL 1144

ROLLER STEM ASSY DETAILS (WITH PUSH NUTS)



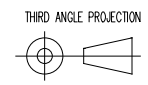
ROLLER ASSY, 2" WL 1144 (NYLON ROLLER)



BRACKET DETAILS

FLAG ANGLE
 13GA

JOHN E. SCATES, PE
 2560 KING ARTHUR BLVD #124-54
 LEWISVILLE, TX 75056
 FL PE 51737 TX PE 56308/F2203
 PROFESSIONAL ENGINEER'S SEAL PROVIDED ONLY FOR
 VERIFICATION OF WINDLOAD CONSTRUCTION DETAILS.



UNLESS OTHERWISE SPECIFIED
 INTERPRET DIMS & TOLS
 PER ASME Y14.5M
 ALL DIMS ARE IN
 INCHES
 DO NOT SCALE
 DIMS CIRCLED WITH SYMBOL 'D'
 ARE CRITICAL TO QUALITY DESIGN
 FEATURES & MUST MEET APPLICABLE
 IN-PROCESS INSPECTION STANDARDS.

TOLERANCES:
 .X = ±.1
 .XX = ±.03
 .XXX = ±.010
 ANGULAR = ±.5°
 HOLES:
 < Ø.251 = +.004/- .003
 Ø.251-Ø.500 = +.006/- .003
 > Ø.500 = +.008/- .003
 ALL GEOMETRY GOVERNED BY 3D CAD DATABASE:

APPROVALS		DATE
DRAWN	G.CLARK	4-11-19
CHECKED	D.KORNISH	2-18-20
APPROVED	-	-
MATERIAL	-	-
FINISH	-	-
WINDLOAD SPECIFICATION OPTION CODE 1148		

The Genuine. The Original. OVERHEAD DOOR		2501 S, TX-121 BUS LEWISVILLE, TEXAS	
DESCRIPTION		170/171/175/180/181/185/ 1400/1500 18'2" MAX WIDTH	
SIZE	DWG NO.	REV	
D	D-411690	A	
SCALE 1:12	UOM = EA	SHEET 4 OF 4	