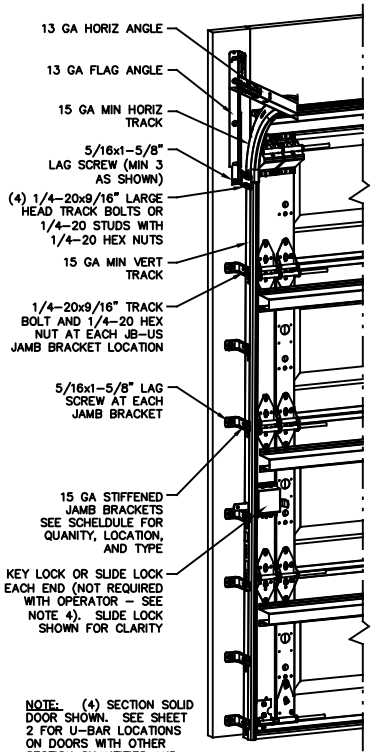
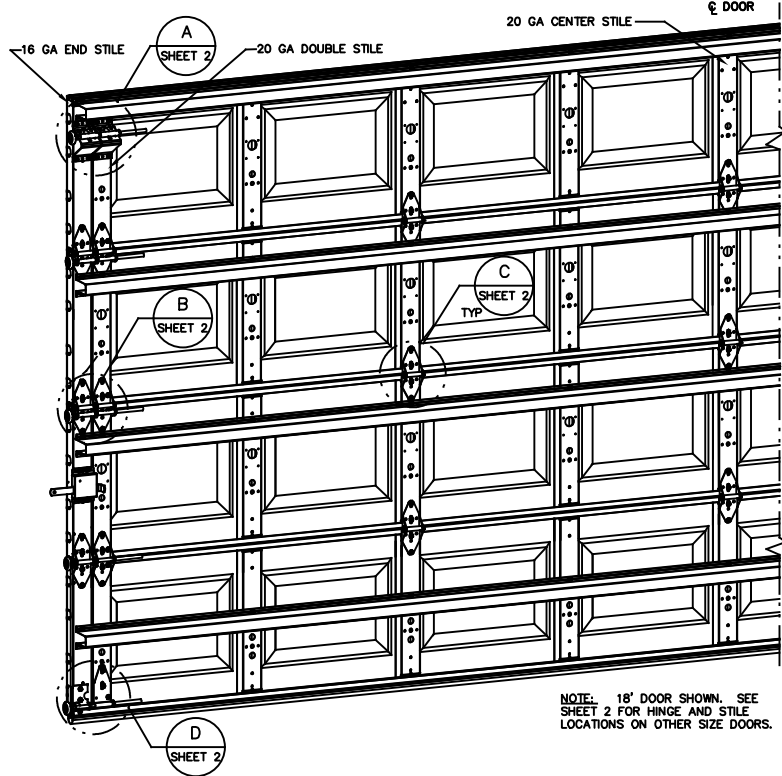


- NOTES:**
- NON IMPACT GLAZING OPTIONS:
16 X 9.75 CLEAR OPENING
36.75 X 9.75 CLEAR OPENING
GLAZING SSB (0.090") MINIMUM. 36.75 X 9.75 OPENING REQUIRES EXTRA 3" X 16 GA U BAR. MAY INCLUDE DECORATIVE INSERTS INSTALLED IN TOP OR INTERMEDIATE SECTION. NOT AVAILABLE IN MORE THAN ONE SECTION. DOES NOT SATISFY WINDBORNE-DEBRIS.
 - IMPACT RESISTANT GLAZING OPTION- IMPACT RESISTANT GLAZING SYSTEM MAY BE INSTALLED IN TOP OR INTERMEDIATE SECTION (WITH OR WITHOUT DECORATIVE INSERTS). GLAZING SHALL BE 1/4" POLYCARBONATE. MAXIMUM GLAZING DIMENSIONS SHALL BE 11" X 17" CUTOUT, FASTENED WITH #8 X 1" SMS: 3X ALONG THE HORIZONTAL AND 2X ALONG THE VERTICAL. SEE DETAIL E ON SHEET 2 FOR ASSEMBLY DETAILS.
 - VINYL OR WOOD DOOR STOP NAILED A MAXIMUM OF 6" O.C. MUST OVERLAP TOP AND BOTH ENDS OF PANELS MINIMUM 7/16" TO MEET NEGATIVE PRESSURES.
 - KEY LOCK, SLIDE LOCKS, OR OPERATOR REQUIRED.
 - LOUVER OPTION - .032" MINIMUM LOUVERS IN MOLDED FRAMES SCREWED TOGETHER WITH A MINIMUM OF (10) #8x1" SCREWS INSTALLED IN THE BOTTOM SECTION. LOUVERS ARE NOT IMPACT RESISTANT AND DO NOT MEET THE REQUIREMENTS FOR WIND-BORNE DEBRIS REGIONS.
 - SECTION STEEL TO HAVE A MINIMUM 25 GA THICKNESS.
 - THE DESIGN OF THE SUPPORTING STRUCTURAL ELEMENTS SHALL BE THE RESPONSIBILITY OF THE PROFESSIONAL OF RECORD FOR THE BUILDING OR STRUCTURE AND IN ACCORDANCE WITH CURRENT BUILDING CODES FOR THE LOADS LISTED ON THIS DRAWING.
 - DOOR JAMB TO BE MINIMUM 2x6. STRUCTURAL GRADE SOUTHERN PINE. REFER TO JAMB CONNECTION SUPPLEMENT FOR ATTACHMENT TO SUPPORTING STRUCTURE.
 - FOR LOW HEAD ROOM LIFT CONDITIONS. TOP BRACKET SHALL BE (2) 13 GA LHR 7/4 TOP BRACKET WITH A MINIMUM OF (3) 1/4-14x7/8" SELF DRILLING CRIMPITE SCREWS IN LIEU OF THE BRACKET SHOWN ON THIS DRAWING. U-BAR ON TOP SECTION SHALL BE INSTALLED ON TOP OF LHR TOP BRACKETS.



NOTE: (4) SECTION SOLID DOOR SHOWN. SEE SHEET 2 FOR U-BAR LOCATIONS ON DOORS WITH OTHER SECTION QUANTITIES AND SEE NOTES 1 AND 2 THIS SHEET FOR GLAZING OPTIONS.



NOTE: 18' DOOR SHOWN. SEE SHEET 2 FOR HINGE AND STILE LOCATIONS ON OTHER SIZE DOORS.

REVISIONS				
CR	REV	DESCRIPTION	DATE	APPROVAL
31052	B	ADDED 4" STILE	11/12/18	ESC
31052	C	UPDATE NOTES ADD LHR DETAIL	2/13/19	ESC
31052	D	ADD BOLTS TO 4" STRUTS CALLOUT	5/2/19	GAC
	E	ADDED IBC/ARC NOTES FOR TM	4/13/21	TLC

SUPERIMPOSED DESIGN PRESSURE LOADS ON SUPPORTING STRUCTURE

DOOR WIDTH	DOOR HEIGHT	UNIFORM LOAD EACH JAMB (PLF)
17'-0"	ALL	+223.6/-250.0
18'-0"	ALL	+236.7/-263.7

JAMB BRACKET SCHEDULE			LOCATION OF CENTERLINE OF JAMB BRACKETS MEASURED FROM BOTTOM OF TRACK (ALL DIMENSIONS ± 2")	
DOOR HEIGHT	NO. OF SECTIONS	NO. OF JAMB BRACKETS (EACH JAMB)		
6'-6"	4	7	2" (JB-US), 10" (JB-US), 21-3/4" (JB-US), 30-1/2" (JB-US), 39" (JB-US), 48" (JB-US), 57-1/4" (JB-US)	
7'-0"	4	7	2" (JB-US), 10" (JB-US), 21-3/4" (JB-US), 30-1/2" (JB-US), 42" (JB-US), 52-7/2" (JB-US), 63-1/4" (JB-US)	
7'-6"	5	9	2" (JB-US), 10" (JB-US), 18-3/4" (JB-US), 30-1/2" (JB-US), 36" (JB-US), 45" (JB-US), 54-1/4" (JB-US), 63" (JB-US), 74-1/2" (JB-US)	
8'-0"	5	9	2" (JB-US), 10" (JB-US), 21-3/4" (JB-US), 30-1/2" (JB-US), 39" (JB-US), 48" (JB-US), 57-1/2" (JB-US), 66" (JB-US), 75-1/2" (JB-US)	
> 8'-0"			SEE NOTE BELOW	

NOTE: (JB-US) FOLLOWING DIMENSION DENOTES SLOTTED JAMB BRACKET ATTACHED TO TRACK WITH 1/4-20x9/16" TRACK BOLT AND NUT AS SHOWN ABOVE.

ALL DOORS GREATER THAN 8' IN HEIGHT REQUIRE USE OF CONTINUOUS WALL ANGLE. SEE SUPPLEMENT TRACK CHART FOR DETAILS.

SERIES 170-177, 180-187, 1400, 1440, 1500, 1540

COMPLIES WITH THE REQUIREMENTS OF IBC/ARC 2018.

STATIC PRESSURE RATINGS	APPROVED SIZES
DESIGN PRESSURE (PSF): +26.3/-29.3	MAX WIDTH: 18' MAX HEIGHT: 14'
IMPACT/CYCLIC RATED: YES	MAX SECTION HEIGHT: 21'

JOHN E. SCATES, PE
2560 KING ARTHUR BLVD #124-54
LEWISVILLE, TX 75056
FL PE 51737
TX PE 56308/F2203

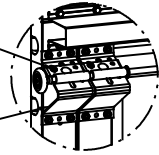
PROFESSIONAL ENGINEER'S SEAL PROVIDED ONLY FOR VERIFICATION OF WINDLOAD CONSTRUCTION DETAILS.

THE DRAWINGS AND ALL OTHER INFORMATION CONTAINED HEREIN ARE THE CONFIDENTIAL AND PROPRIETARY PROPERTY OF OVERHEAD DOOR CORPORATION AND ITS AFFILIATED COMPANIES. THIS DRAWING AND INFORMATION, IN WHOLE OR IN PART, MAY NOT BE COPIED IN ANY MANNER OR DISCLOSED TO ANYONE WITHOUT THE PRIOR WRITTEN CONSENT OF OVERHEAD DOOR CORPORATION. NO DISCLOSURE OF ANY OF THIS DRAWING OR INFORMATION IS INTENDED TO OPERATE AS A LICENSE OR AUTHORIZATION TO USE IT FOR ANY PURPOSE WITHOUT THE SPECIFIC WRITTEN CONSENT OF OVERHEAD DOOR CORPORATION.

REF DWG	USED ON		<table border="1"> <thead> <tr> <th colspan="2">TOLERANCES UNLESS OTHERWISE SPECIFIED</th> </tr> </thead> <tbody> <tr> <td>HOLE DIAMETER</td> <td>± .010</td> </tr> <tr> <td>UNDER .251 +.004/- .003</td> <td>± .004</td> </tr> <tr> <td>.251 TO .500 +.006/- .003</td> <td>± .006</td> </tr> <tr> <td>OVER .500 +.008/- .003</td> <td>± .008</td> </tr> <tr> <td>FRACTIONS</td> <td>± .010</td> </tr> <tr> <td>± 1/16</td> <td>± .010</td> </tr> </tbody> </table>	TOLERANCES UNLESS OTHERWISE SPECIFIED		HOLE DIAMETER	± .010	UNDER .251 +.004/- .003	± .004	.251 TO .500 +.006/- .003	± .006	OVER .500 +.008/- .003	± .008	FRACTIONS	± .010	± 1/16	± .010	<table border="1"> <thead> <tr> <th>FINISH</th> <th>WHOLE NUMBERS:</th> <th>UNIT OF MEASURE</th> </tr> </thead> <tbody> <tr> <td>N/A</td> <td>± .25</td> <td>EACH</td> </tr> <tr> <td></td> <td>± .1</td> <td></td> </tr> <tr> <td></td> <td>± .03</td> <td></td> </tr> <tr> <td></td> <td>± .010</td> <td></td> </tr> <tr> <td></td> <td>± .5</td> <td></td> </tr> </tbody> </table>	FINISH	WHOLE NUMBERS:	UNIT OF MEASURE	N/A	± .25	EACH		± .1			± .03			± .010			± .5		<table border="1"> <thead> <tr> <th>DATE</th> <th>NAME</th> </tr> </thead> <tbody> <tr> <td>10/16/18</td> <td>E. CONRAD</td> </tr> <tr> <td>10/16/18</td> <td>D. KORNISH</td> </tr> <tr> <td>4/13/21</td> <td>T. CLARK</td> </tr> </tbody> </table>	DATE	NAME	10/16/18	E. CONRAD	10/16/18	D. KORNISH	4/13/21	T. CLARK	<table border="1"> <thead> <tr> <th>DATE</th> <th>DESCRIPTION</th> </tr> </thead> <tbody> <tr> <td>10/16/18</td> <td>SERIES 170, 180WL</td> </tr> <tr> <td></td> <td>WS7, 18' MAX WIDE</td> </tr> <tr> <td></td> <td>D-411545</td> </tr> </tbody> </table>	DATE	DESCRIPTION	10/16/18	SERIES 170, 180WL		WS7, 18' MAX WIDE		D-411545
TOLERANCES UNLESS OTHERWISE SPECIFIED																																																						
HOLE DIAMETER	± .010																																																					
UNDER .251 +.004/- .003	± .004																																																					
.251 TO .500 +.006/- .003	± .006																																																					
OVER .500 +.008/- .003	± .008																																																					
FRACTIONS	± .010																																																					
± 1/16	± .010																																																					
FINISH	WHOLE NUMBERS:	UNIT OF MEASURE																																																				
N/A	± .25	EACH																																																				
	± .1																																																					
	± .03																																																					
	± .010																																																					
	± .5																																																					
DATE	NAME																																																					
10/16/18	E. CONRAD																																																					
10/16/18	D. KORNISH																																																					
4/13/21	T. CLARK																																																					
DATE	DESCRIPTION																																																					
10/16/18	SERIES 170, 180WL																																																					
	WS7, 18' MAX WIDE																																																					
	D-411545																																																					

NOTES

13 GA ROLLER SLIDE ATTACHED TO BRACKET WITH 5/16-18 BOLT & NUT IN CENTER SLOT AND 1/4-20x9/16" TRACK BOLT & 1/4-20 HEX NUT THROUGH ANY TWO ALIGNING HOLES

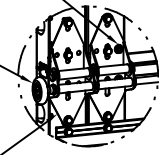


DETAIL A

(2) 13 GA COMMERCIAL 'A' FRAME TOP BRACKETS EACH ATTACHED WITH (4) 1/4-14x7/8" SELF DRILLING CRIMPITITE SCREWS

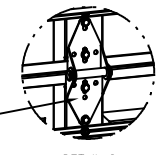
ADD (2) 1/4-14x7/8" SELF DRILLING CRIMPITITE SCREWS (INSIDE OF EACH INSIDE END HINGE)

2" STEEL ROLLER WITH 9" GRADE 1144 OR EQUIVALENT STEM AND 7/16" PUSHNUT AT EACH ROLLER LOCATION. 1/4" MAX BETWEEN PUSHNUT AND BRACKET OR HINGE.



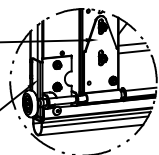
DETAIL B

#1 HINGE IS 14 GA
#2 HINGE IS 13 GA
#3 HINGE (AND ALL ABOVE) ARE 13 GA WIDE BODY END HINGE ATTACHED WITH (4) 1/4-14x5/8" SELF TAPPING SCREWS



DETAIL C

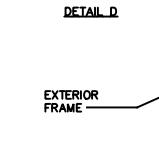
14 GA WIDE BODY INTERMEDIATE HINGE ATTACHED WITH (4) 1/4-14x5/8" SELF TAPPING SCREWS



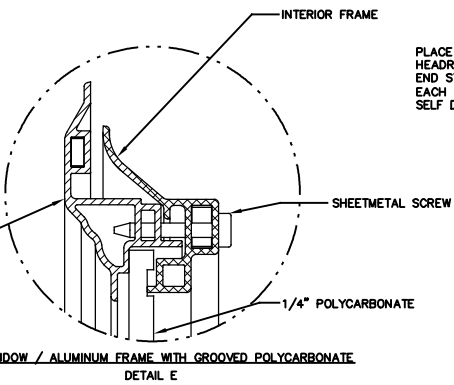
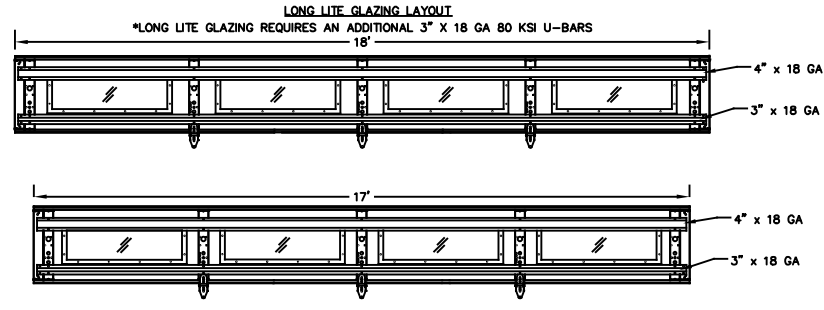
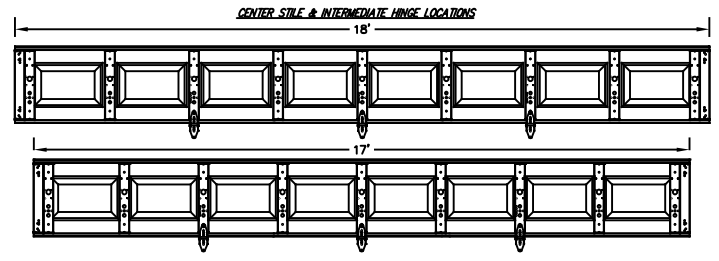
DETAIL D

12 GA EXTENSION BRACKET ATTACHED WITH (3) 1/4-14x7/8" SELF DRILLING CRIMPITITE SCREWS

14 GA BOTTOM BRACKET ATTACHED WITH (2) 1/4-14x7/8" SELF DRILLING CRIMPITITE SCREWS THROUGH STRUT AND BOTTOM BRACKET AND (1) 1/4-14x5/8" SELF DRILLING RED SCREW

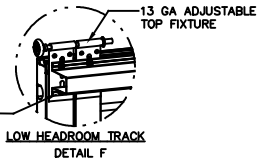


DETAIL E



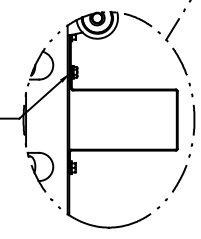
IMPACT WINDOW / ALUMINUM FRAME WITH GROOVED POLYCARBONATE
DETAIL E

PLACE 4" STRUT OVER LOW HEADROOM BRACKET ATTACH THRU END STILE AND CENTER STILE AT EACH END WITH (4) 1/4-14x7/8" SELF DRILLING CRIMPITITE SCREWS.

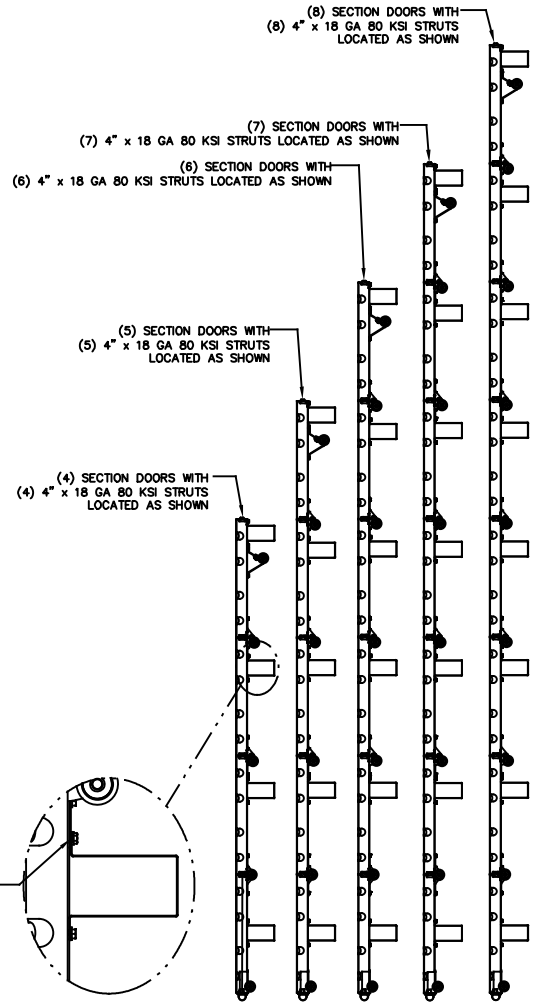


LOW HEADROOM TRACK
DETAIL F

ATTACH U-BAR WITH (2) 1/4-14x7/8" SELF DRILLING CRIMPITITE SCREWS AT EACH STILE LOCATION, TYP.



U-BAR LOCATIONS



STATIC PRESSURE RATINGS		APPROVED SIZES	
DESIGN PRESSURE(PSF): +26.3/-29.3		MAX WIDTH: 18'	
		MAX HEIGHT: 14'	
IMPACT/CYCLIC RATED: YES		MAX SECTION HEIGHT: 21'	

JOHN E. SCATES, PE
2560 KING ARTHUR BLVD #124-54
LEWISVILLE, TX 75056
FL PE 51737
TX PE 56308/F2203

PROFESSIONAL ENGINEER'S SEAL PROVIDED ONLY FOR VERIFICATION OF WINDLOAD CONSTRUCTION DETAILS.

THE DRAWINGS AND ALL OTHER INFORMATION CONTAINED HEREIN ARE THE CONFIDENTIAL AND PROPRIETARY PROPERTY OF OVERHEAD DOOR CORPORATION AND ITS AFFILIATED COMPANIES. THIS DRAWING AND INFORMATION, IN WHOLE OR IN PART, MAY NOT BE COPIED IN ANY MANNER OR DISCLOSED TO ANYONE WITHOUT THE PRIOR WRITTEN CONSENT OF OVERHEAD DOOR CORPORATION. NO DISCLOSURE OF ANY OF THIS DRAWING OR INFORMATION IS INTENDED TO OPERATE AS A LICENSE OR AUTHORIZATION TO USE IT FOR ANY PURPOSE WITHOUT THE SPECIFIC WRITTEN CONSENT OF OVERHEAD DOOR CORPORATION.			
	TOLERANCES UNLESS OTHERWISE SPECIFIED	FINISH: N/A UNIT OF MEASURE: EACH	NONE
	HOLE DIAMETER: UNDER .251 +.004/- .003 .251 TO .500 +.006/- .003 OVER .500 +.008/- .003		
REF DWG	USED ON		

	DRAWING TITLE: SERIES 170, 180WL WS7, 18' MAX WIDE
CHECKED BY: D. KORNISH DATE: 10/18/18	DRAWING NUMBER: D-411545
APPROVED BY: T. CLARK DATE: 4/13/21	SCALE: N.T.S. SHEET 2 OF 2