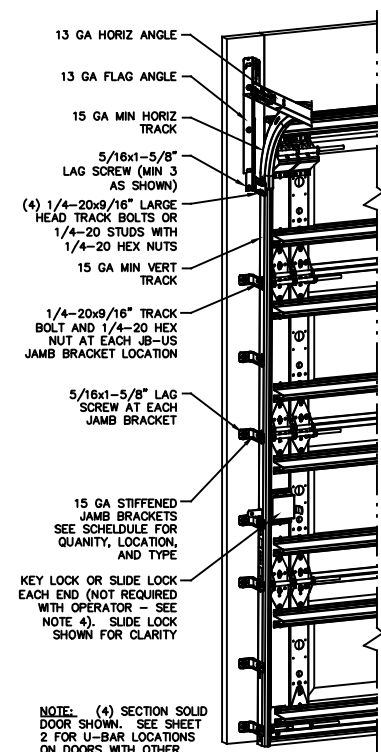
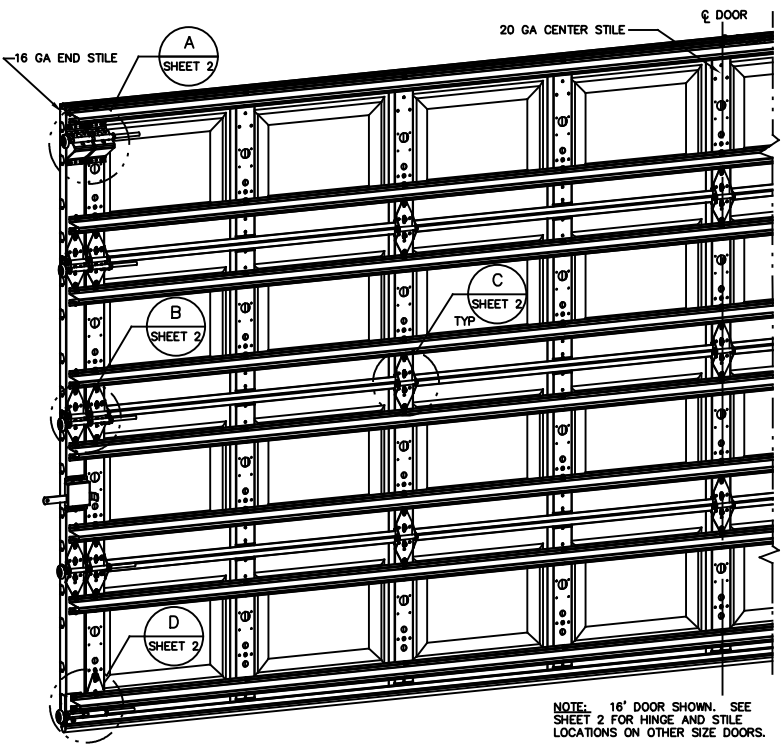


- NOTES:**
1. IMPACT RESISTANT GLAZING OPTION- IMPACT RESISTANT GLAZING SYSTEM MAY BE INSTALLED IN TOP OR INTERMEDIATE SECTION (WITH OR WITHOUT DECORATIVE INSERTS). GLAZING SHALL BE 1/4" POLYCARBONATE. MAXIMUM GLAZING DIMENSIONS SHALL BE 11" x 17" CUTOUT, FASTENED WITH #8 X 1" SMS: 3X ALONG THE HORIZONTAL AND 2X ALONG THE VERTICAL. SEE DETAIL E ON SHEET 2 FOR ASSEMBLY DETAILS.
 2. VINYL OR WOOD DOOR STOP NAILED A MAXIMUM OF 6" O.C. MUST OVERLAP TOP AND BOTH ENDS OF PANELS MINIMUM 7/16" TO MEET NEGATIVE PRESSURES.
 3. KEY LOCK, SLIDE LOCKS, OR OPERATOR REQUIRED.
 4. SECTION STEEL TO HAVE A MINIMUM 25 GA THICKNESS.
 5. THE DESIGN OF THE SUPPORTING STRUCTURAL ELEMENTS SHALL BE THE RESPONSIBILITY OF THE PROFESSIONAL OF RECORD FOR THE BUILDING OR STRUCTURE AND IN ACCORDANCE WITH CURRENT BUILDING CODES FOR THE LOADS LISTED ON THIS DRAWING.
 6. DOOR JAMB TO BE MINIMUM 2x6, STRUCTURAL GRADE SOUTHERN PINE. REFER TO JAMB CONNECTION SUPPLEMENT FOR ATTACHMENT TO SUPPORTING STRUCTURE.



NOTE: (4) SECTION SOLID DOOR SHOWN. SEE SHEET 2 FOR U-BAR LOCATIONS ON DOORS WITH OTHER SECTION QUANTITIES AND SEE NOTES 1 AND 2 THIS SHEET FOR GLAZING OPTIONS.



NOTE: 16' DOOR SHOWN. SEE SHEET 2 FOR HINGE AND STILE LOCATIONS ON OTHER SIZE DOORS.

REVISIONS				
CR	REV	DESCRIPTION	DATE	APPROVAL
30704	B	REV PER ER	11/13/12	GBT
	C	REV TITLE BLOCK	10/2/2017	ESC
31052	D	UPDATE NOTES AND TITLE BLOCK	2/13/19	ESC
	E	ADDED INC/IBC NOTES FOR TD	4/12/21	TLC

SUPERIMPOSED DESIGN PRESSURE LOADS ON SUPPORTING STRUCTURE

DOOR WIDTH	DOOR HEIGHT	UNIFORM LOAD EACH JAMB (PLF)
10'-0"	ALL	+230.0/-260.0
12'-0"	ALL	+276.0/-312.0
14'-0"	ALL	+322.0/-364.0
15'-0"	ALL	+345.0/-390.0
16'-0"	ALL	+368.0/-416.0

JAMB BRACKET SCHEDULE			LOCATION OF CENTERLINE OF JAMB BRACKETS MEASURED FROM BOTTOM OF TRACK (ALL DIMENSIONS ± 2")	
DOOR HEIGHT	NO. OF SECTIONS	NO. OF JAMB BRACKETS (EACH JAMB)		
6'-6"	4	7	2" (JB-US), 10" (JB-US), 21-3/4" (JB-US), 29-3/4" (JB-US), 39" (JB-US), 48" (JB-US), 57-1/4" (JB-US)	
7'-0"	4	7	2" (JB-US), 10" (JB-US), 21-3/4" (JB-US), 29-3/4" (JB-US), 42" (JB-US), 52-1/2" (JB-US), 63-1/4" (JB-US)	
7'-6"	5	9	2" (JB-US), 10" (JB-US), 18-3/4" (JB-US), 26-3/4" (JB-US), 36" (JB-US), 45" (JB-US), 54-1/4" (JB-US), 63" (JB-US), 74-1/2" (JB-US)	
8'-0"	5	9	2" (JB-US), 10" (JB-US), 21-3/4" (JB-US), 29-3/4" (JB-US), 39" (JB-US), 48" (JB-US), 57-1/2" (JB-US), 66" (JB-US), 75-1/2" (JB-US)	
> 8'-0"			SEE NOTE BELOW	

NOTE: (JB-US) FOLLOWING DIMENSION DENOTES SLOTTED JAMB BRACKET ATTACHED TO TRACK WITH 1/4-20x9/16" TRACK BOLT AND NUT AS SHOWN ABOVE.
ALL DOORS GREATER THAN 8' IN HEIGHT REQUIRE USE OF CONTINUOUS WALL ANGLE. SEE SUPPLEMENT TRACK CHART FOR DETAILS.

SERIES 170-177, 180-187, 1400, 1440, 1500, 1540

COMPLIES WITH THE REQUIREMENTS OF IBC/IRC 2018.

STATIC PRESSURE RATINGS	APPROVED SIZES
DESIGN PRESSURE(PSF): +46.0/-52.0	MAX WIDTH: 16' MAX HEIGHT: 14'
IMPACT/CYCLIC RATED: YES	MAX SECTION HEIGHT: 21'

JOHN E. SCATES, PE
2560 KING ARTHUR BLVD #124-54
LEWISVILLE, TX 75056
FL PE 51737
TX PE 56308/F2203

PROFESSIONAL ENGINEER'S SEAL PROVIDED ONLY FOR VERIFICATION OF WINDLOAD CONSTRUCTION DETAILS.

THE DRAWINGS AND ALL OTHER INFORMATION CONTAINED HEREIN ARE THE CONFIDENTIAL AND PROPRIETARY PROPERTY OF OVERHEAD DOOR CORPORATION AND ITS AFFILIATED COMPANIES. THIS DRAWING AND INFORMATION, IN WHOLE OR IN PART, MAY NOT BE COPIED IN ANY MANNER OR DISCLOSED TO ANYONE WITHOUT THE PRIOR WRITTEN CONSENT OF OVERHEAD DOOR CORPORATION. NO DISCLOSURE OF ANY OF THIS DRAWING OR INFORMATION IS INTENDED TO OPERATE AS A LICENSE OR AUTHORIZATION TO USE IT FOR ANY PURPOSE WITHOUT THE SPECIFIC WRITTEN CONSENT OF OVERHEAD DOOR CORPORATION.

REF DWG	USED ON	HOLE DIMENSIONS UNDER .251 +.004/-003 .251 TO .500 +.006/-003 OVER .500 +.008/-003	FINISH N/A UNIT OF MEASURE EACH	WHOLE NUMBERS: ± .25 X ± .1 .XX ± .03 XXX ± .010 ANGLES: ± .5°	DATE 10/15/10	DRAWING TITLE SERIES 170, 180WL WS9, 16' MAX WIDE
					DATE 10/25/10	DRAWING NUMBER D-411049
					DATE 4/12/21	SCALE N.T.S. SHEET 1 OF 2

NOTES

13 GA ROLLER SLIDE ATTACHED TO BRACKET WITH 5/16-18 BOLT & NUT IN CENTER SLOT AND 1/4-20x9/16" TRACK BOLT & 1/4-20 HEX NUT THROUGH ANY TWO ALIGNING HOLES

(2) 13 GA COMMERCIAL "A" FRAME TOP BRACKETS EACH ATTACHED WITH (4) 1/4-14x7/8" SELF DRILLING CRIMPITITE SCREWS

ADD (2) 1/4-14x7/8" SELF DRILLING CRIMPITITE SCREWS (INSIDE OF EACH INSIDE END HINGE)

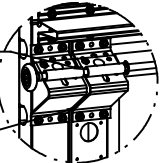
2" STEEL ROLLER WITH 9" GRADE 1144 OR EQUIVALENT STEM AND 7/16" PUSHNUT AT EACH ROLLER LOCATION. 1/4" MAX BETWEEN PUSHNUT AND BRACKET OR HINGE

(2) 14 GA WIDE BODY END HINGES EACH ATTACHED WITH (4) 1/4-14x5/8" SELF TAPPING SCREWS

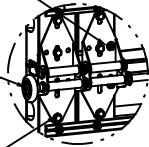
14 GA WIDE BODY INTERMEDIATE HINGE ATTACHED WITH (4) 1/4-14x5/8" SELF TAPPING SCREWS

12 GA EXTENSION BRACKET ATTACHED WITH (3) 1/4-14x7/8" SELF DRILLING CRIMPITITE SCREWS (2 THROUGH STRUT AND BRACKET)

14 GA BOTTOM BRACKET ATTACHED WITH (2) 1/4-14x7/8" SELF DRILLING CRIMPITITE SCREWS THROUGH STRUT AND BOTTOM BRACKET AND (1) 1/4-14x5/8" SELF DRILLING RED SCREW



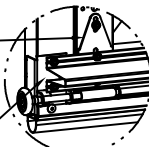
DETAIL A



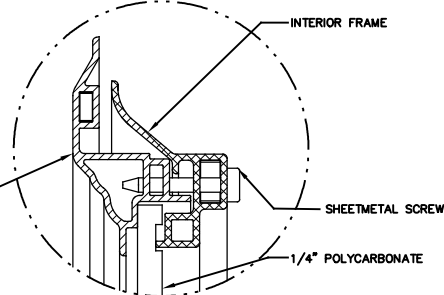
DETAIL B



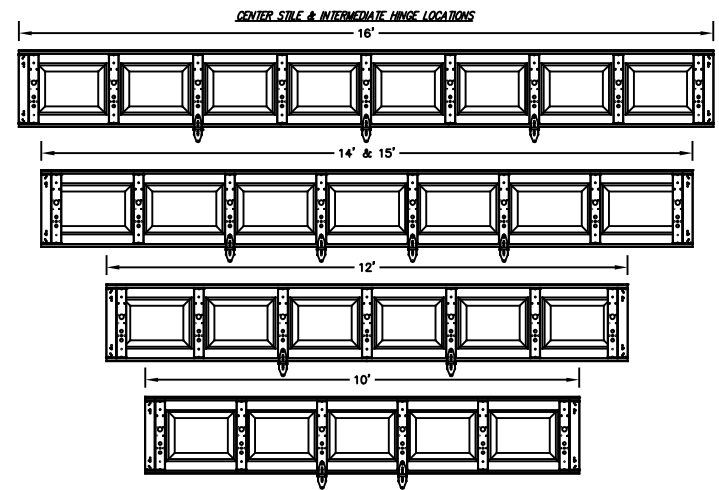
DETAIL C



DETAIL D

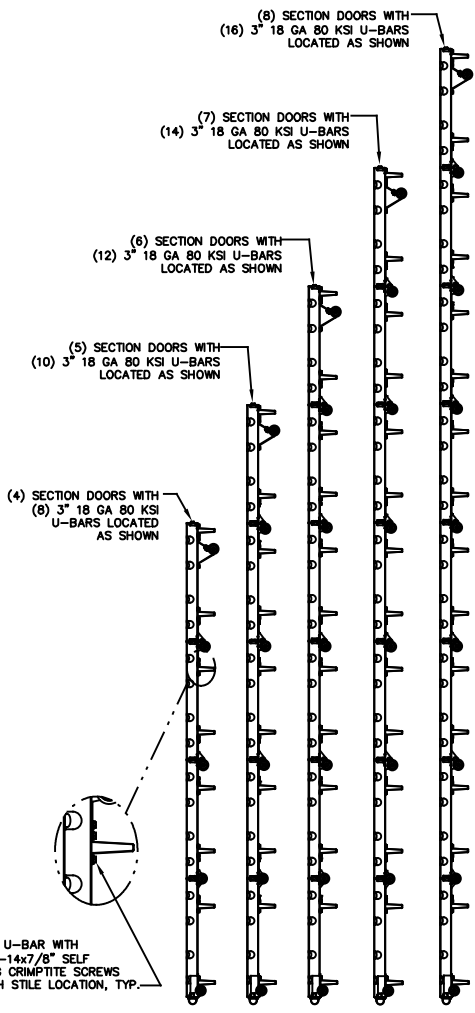


IMPACT WINDOW / ALUMINUM FRAME WITH GROOVED POLYCARBONATE
DETAIL E



CENTER STILE & INTERMEDIATE HINGE LOCATIONS

U-BAR LOCATIONS



ATTACH U-BAR WITH (2) 1/4-14x7/8" SELF DRILLING CRIMPITITE SCREWS AT EACH STILE LOCATION, TYP.

PROFESSIONAL ENGINEER'S SEAL PROVIDED ONLY FOR VERIFICATION OF WINDLOAD CONSTRUCTION DETAILS.

JOHN E. SCATES, PE
2560 KING ARTHUR BLVD #124-54
LEWISVILLE, TX 75056
FL PE 51737
TX PE 56308/F2203

THE DRAWINGS AND ALL OTHER INFORMATION CONTAINED HEREIN ARE THE CONFIDENTIAL AND PROPRIETARY PROPERTY OF OVERHEAD DOOR CORPORATION AND ITS AFFILIATED COMPANIES. THIS DRAWING AND INFORMATION, IN WHOLE OR IN PART, MAY NOT BE COPIED IN ANY MANNER OR DISCLOSED TO ANYONE WITHOUT THE PRIOR WRITTEN CONSENT OF OVERHEAD DOOR CORPORATION. NO DISCLOSURE OF ANY OF THIS DRAWING OR INFORMATION IS INTENDED TO OPERATE AS A LICENSE OR AUTHORIZATION TO USE IT FOR ANY PURPOSE WITHOUT THE SPECIFIC WRITTEN CONSENT OF OVERHEAD DOOR CORPORATION.		<table border="1"> <tr> <th colspan="2">STATIC PRESSURE RATINGS</th> <th colspan="2">APPROVED SIZES</th> </tr> <tr> <td colspan="2">DESIGN PRESSURE(PSF): +46.0/-52.0</td> <td colspan="2">MAX WIDTH: 16'</td> </tr> <tr> <td colspan="2">IMPACT/CYCLIC RATED: YES</td> <td colspan="2">MAX SECTION HEIGHT: 21'</td> </tr> </table>		STATIC PRESSURE RATINGS		APPROVED SIZES		DESIGN PRESSURE(PSF): +46.0/-52.0		MAX WIDTH: 16'		IMPACT/CYCLIC RATED: YES		MAX SECTION HEIGHT: 21'																									
STATIC PRESSURE RATINGS		APPROVED SIZES																																					
DESIGN PRESSURE(PSF): +46.0/-52.0		MAX WIDTH: 16'																																					
IMPACT/CYCLIC RATED: YES		MAX SECTION HEIGHT: 21'																																					
<table border="1"> <tr> <th>HOLE DIAMETER</th> <th>WHOLE NUMBERS:</th> <th>FINISH</th> </tr> <tr> <td>UNDER .251 +.004/- .003</td> <td>± .25</td> <td>N/A</td> </tr> <tr> <td>.251 TO .500 +.006/- .003</td> <td>± .1</td> <td></td> </tr> <tr> <td>OVER .500 +.008/- .003</td> <td>± .03</td> <td></td> </tr> <tr> <td>FRACTIONS:</td> <td>± .010</td> <td></td> </tr> <tr> <td>± 1/16</td> <td>± .5'</td> <td></td> </tr> </table>	HOLE DIAMETER	WHOLE NUMBERS:	FINISH	UNDER .251 +.004/- .003	± .25	N/A	.251 TO .500 +.006/- .003	± .1		OVER .500 +.008/- .003	± .03		FRACTIONS:	± .010		± 1/16	± .5'		<table border="1"> <tr> <th>UNIT OF MEASURE</th> <th>FINISH</th> </tr> <tr> <td>EACH</td> <td>NONE</td> </tr> </table>	UNIT OF MEASURE	FINISH	EACH	NONE	<table border="1"> <tr> <th>DATE</th> <th>NAME</th> </tr> <tr> <td>10/15/10</td> <td>G. TAYLOR</td> </tr> <tr> <td>10/25/10</td> <td>M. SAWICKI</td> </tr> <tr> <td>4/12/21</td> <td>T. CLARK</td> </tr> </table>	DATE	NAME	10/15/10	G. TAYLOR	10/25/10	M. SAWICKI	4/12/21	T. CLARK	<table border="1"> <tr> <th>DRAWING TITLE</th> <th>SCALE</th> <th>SHEET 2 OF 2</th> </tr> <tr> <td>SERIES 170, 180WL WS9, 16' MAX WIDE</td> <td>N.T.S.</td> <td></td> </tr> </table>	DRAWING TITLE	SCALE	SHEET 2 OF 2	SERIES 170, 180WL WS9, 16' MAX WIDE	N.T.S.	
HOLE DIAMETER	WHOLE NUMBERS:	FINISH																																					
UNDER .251 +.004/- .003	± .25	N/A																																					
.251 TO .500 +.006/- .003	± .1																																						
OVER .500 +.008/- .003	± .03																																						
FRACTIONS:	± .010																																						
± 1/16	± .5'																																						
UNIT OF MEASURE	FINISH																																						
EACH	NONE																																						
DATE	NAME																																						
10/15/10	G. TAYLOR																																						
10/25/10	M. SAWICKI																																						
4/12/21	T. CLARK																																						
DRAWING TITLE	SCALE	SHEET 2 OF 2																																					
SERIES 170, 180WL WS9, 16' MAX WIDE	N.T.S.																																						