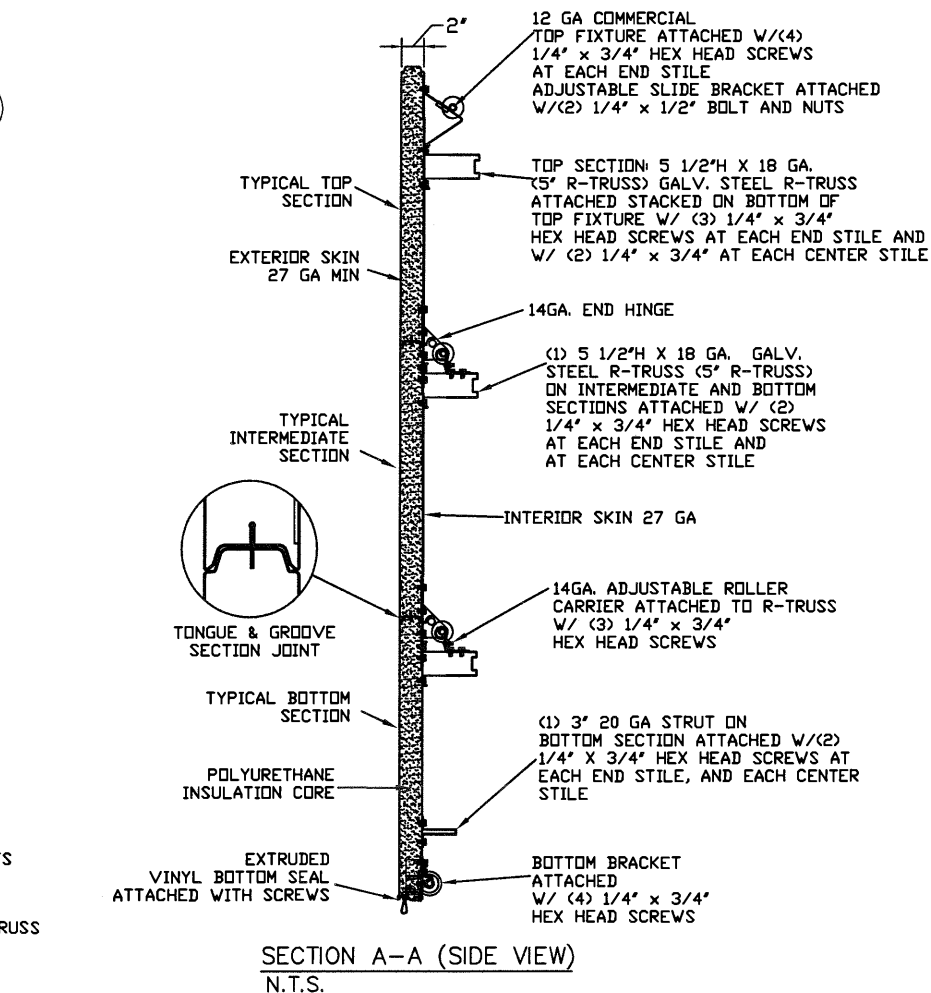
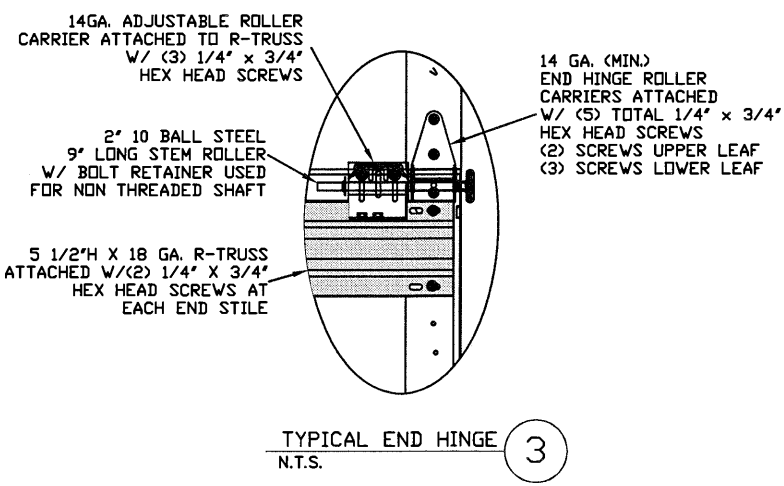
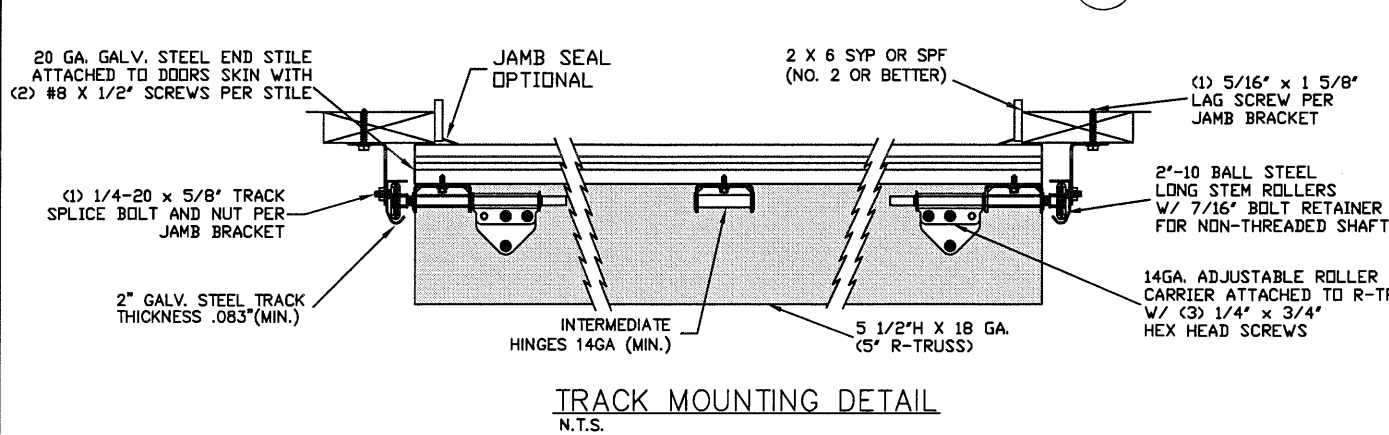
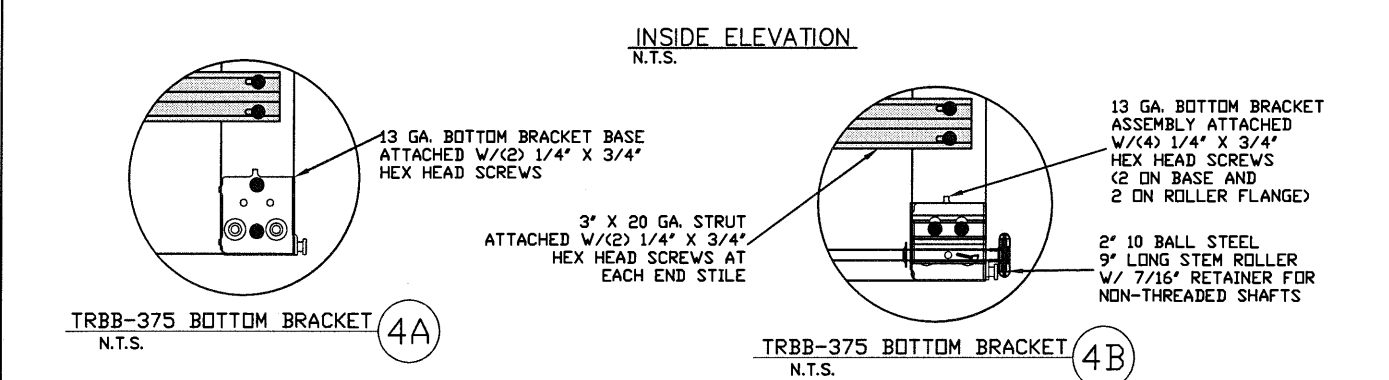
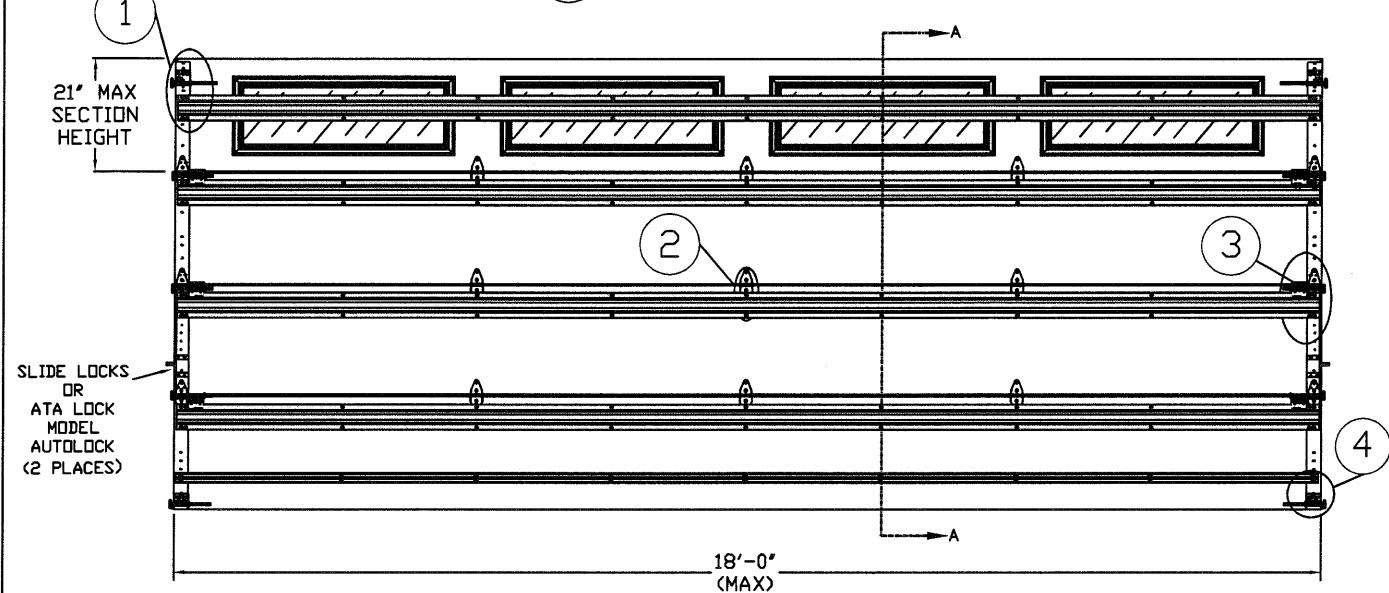
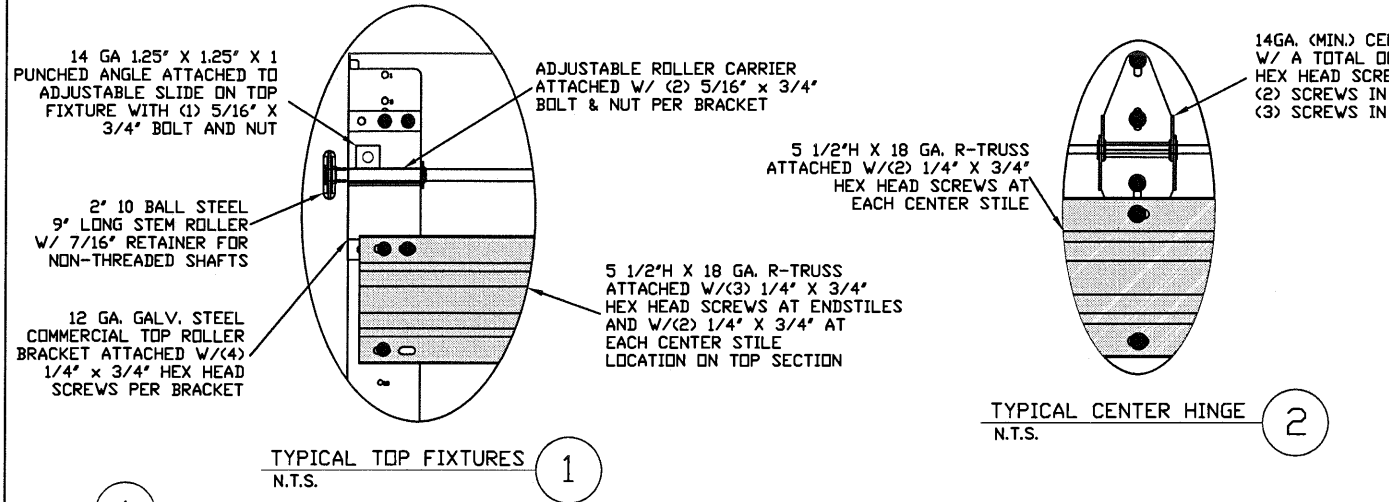


LARGE MISSILE IMPACT RESISTANT

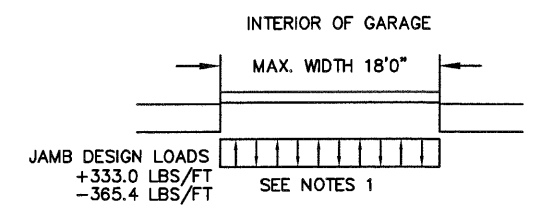


THE METHOD OF TESTING WAS IN SUBSTANTIAL CONFORMANCE WITH THE PROCEDURE DESCRIBED IN DASMA 108 & 115, ASTM E330, E1886, E1996, & F588. THE PRESSURES SHOWN ON THE DRAWINGS WERE CALCULATED USING ASCE 7-98/02/05 WITH THE FOLLOWING PARAMETERS (5 FEET OF DOOR WIDTH IN THE END ZONE, ROOF AT ANY SLOPE I=1.0):

WIND SPEED (MPH)	155	140	133	127	122
EXPOSURE LEVEL	B	C	C	D	D
MEAN ROOF HEIGHT	30'	15'	25'	15'	25'

SPECIFICATIONS AND NOTES

- DOORS AND HARDWARE WILL BE DESIGNED, MANUFACTURED AND INSTALLED WITH STANDARDS AS SET FORTH BY DASMA. EACH VERTICAL JAMBS RECEIVES MAXIMUM DESIGN LOADS OF: +333.0 LBS/FT & -365.4 LBS/FT
- DOOR SECTIONS SHALL BE 27 GA. MIN. (.0151") ROLLED FORMED LIGHT COMMERCIAL QUALITY
- SUPPORTING STRUCTURAL ELEMENTS SHALL BE DESIGNED BY A REGISTERED PROFESSIONAL ENGINEER FOR WIND LOADS INDICATED ON THIS DRAWING IN ADDITION TO OTHER LOADINGS.



REV	DESCRIPTION OF REVISIONS	DATE	BY

MAX SIZE 18" WIDTH 14" HEIGHT (DOOR HEIGHT SUBJECT TO WEIGHT LIMITATIONS)

DESIGN LOADS +37.0 PSF -40.6 PSF

TEST LOADS +55.5 PSF -60.9 PSF

Thomas L. Shelmerdine, PE (TX PE #85829) Structural Solutions, PA (TX Firm #004063)

STATE OF TEXAS
THOMAS L. SHELMERDINE
85829
PROFESSIONAL ENGINEER
TX

Amarr
ENTREMATIC

MODEL P500 AMARR OLYMPUS 500
MODEL D500 AMARR DESIGNERS CHOICE DC-500

SIZE	DRAWN BY	RLR	DATE	02/06/18	DRAWING NUMBER
B	CHECKED BY	RLR	DATE	02/06/18	IRC-P518-155-26-I

ENTREMATIC
165 CARRIAGE COURT WINSTON-SALEM, N.C. 27105

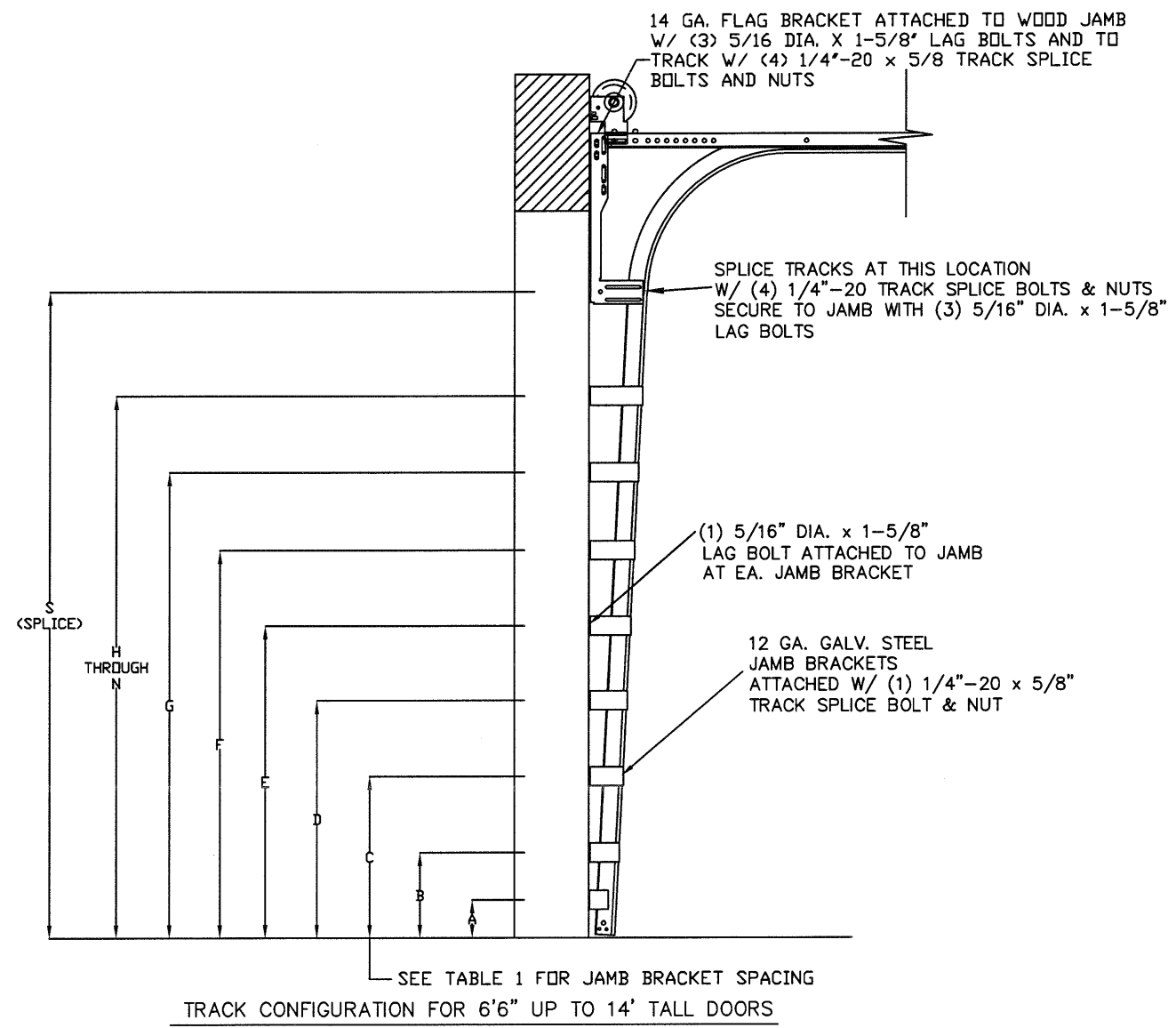
SHEET 1 OF 3

5921-G W. Friendly Ave., Greensboro, NC 27410

TABLE 1

HEIGHT	TRACK ATTACHMENT														SPLICE	
	A	B	C	D	E	F	G	H	I	J	K	L	M	N		
6' 0"	3.5"	10"	22"	34"	46"	58"										64"
6' 6"	3.5"	10"	22"	34"	46"	58"										70"
7' 0"	3.5"	10"	22"	34"	46"	58"	70"									76"
7' 6"	3.5"	10"	22"	34"	46"	58"	70"									82"
8' 0"	3.5"	10"	22"	34"	46"	58"	70"	82"								88"
8' 6"	3.5"	10"	22"	34"	46"	58"	70"	82"								94"
9' 0"	3.5"	10"	22"	34"	46"	58"	70"	82"	94"							100"
9' 6"	3.5"	10"	22"	34"	46"	58"	70"	82"	94"							106"
10' 0"	3.5"	10"	22"	34"	46"	58"	70"	82"	94"	106"						112"
10' 6"	3.5"	10"	22"	34"	46"	58"	70"	82"	94"	106"						118"
11' 0"	3.5"	10"	22"	34"	46"	58"	70"	82"	94"	106"	118"					124"
11' 6"	3.5"	10"	22"	34"	46"	58"	70"	82"	94"	106"	118"					130"
12' 0"	3.5"	10"	22"	34"	46"	58"	70"	82"	94"	106"	118"	130"				136"
12' 6"	3.5"	10"	22"	34"	46"	58"	70"	82"	94"	106"	118"	130"				142"
13' 0"	3.5"	10"	22"	34"	46"	58"	70"	82"	94"	106"	118"	130"	142"			148"
13' 6"	3.5"	10"	22"	34"	46"	58"	70"	82"	94"	106"	118"	130"	142"			154"
14' 0"	3.5"	10"	22"	34"	46"	58"	70"	82"	94"	106"	118"	130"	142"	154"		160"

ALL TRACK ATTACHMENT SPACING +/- 1" ALLOWED WITH SYP OR SPF NO. 2 OR BETTER ONLY



WOOD JAMB ATTACHMENT TO STRUCTURE

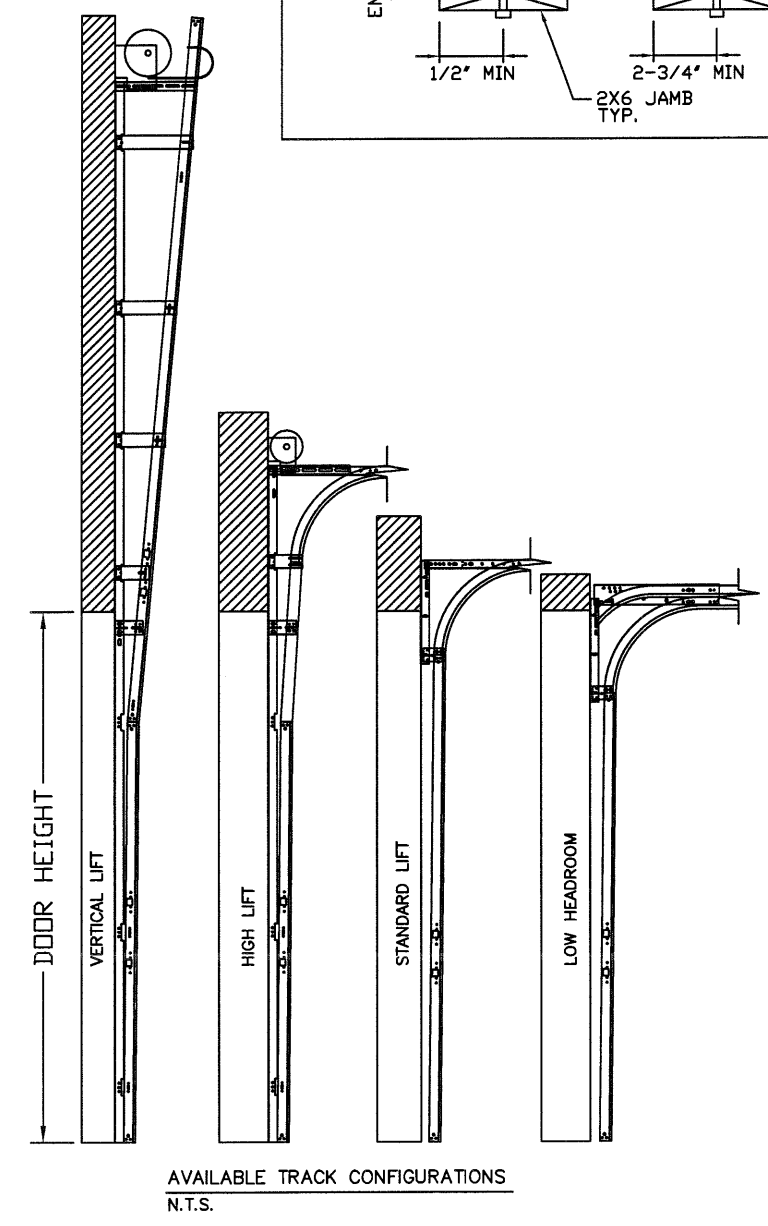
2 X 6 VERTICAL JAMB ATTACHMENT TO WOOD FRAME STRUCTURE
 5/16" X 3" LAG SCREWS STARTING 6" FROM ENDS THEN 14" O.C. (1 1/2" EMBEDMENT)

2 X 6 VERTICAL JAMB ATTACHMENT TO 2,000 PSI CONCRETE
 HILTI KWIK BOLT 3/8" X 4" STARTING 6" FROM ENDS THEN 24" O.C. (2 1/2" EMBEDMENT)
 HILTI SLEEVE ANCHOR 3/8" X 2-3/4" STARTING 6" FROM ENDS THEN 12" O.C. (1 1/4" EMBEDMENT)
 ITW/RAMSET REDHEAD (TRU-BOLT) 3/8" X 4" STARTING 6" FROM ENDS THEN 24" O.C. (2 1/2" EMBEDMENT)

2 X 6 VERTICAL JAMB ATTACHMENT TO HOLLOW C-90 BLOCK
 SIMPSON 1/4" X 3" TITEN SCREWS STARTING 6" FROM ENDS, USE PAIRS OF FASTENERS (3" APART) AT 8" O.C. (1 1/2" EMBEDMENT)
 HILTI 1/4" X 2-3/4" KWIK-CON II+ SCREWS STARTING 6" FROM ENDS, USE PAIRS OF FASTENERS (3" APART) AT 8" O.C. (1 1/4" EMBEDMENT)

2 X 6 VERTICAL JAMB ATTACHMENT TO GROUTED C-90 BLOCK (2000 PSI GROUT)
 HILTI SLEEVE ANCHOR 3/8" X 2-3/4" STARTING 6" FROM ENDS THEN 14" O.C. (1 1/4" EMBEDMENT) (OR, USE FASTENERS FOR HOLLOW C-90 BLOCK)

*LAGS AND BOLTS CAN BE COUNTERSUNK TO PROVIDE A FLUSH MOUNTING SURFACE.
 *PREPARATION OF WOOD JAMBS BY OTHERS



REV	DESCRIPTION OF REVISIONS	DATE	BY

MAX SIZE
 18' WIDTH
 14' HEIGHT
 (DOOR HEIGHT SUBJECT TO WEIGHT LIMITATIONS)

DESIGN LOADS
 +37.0 PSF
 -40.6 PSF

TEST LOADS
 +55.5 PSF
 -60.9 PSF

Thomas L. Shelmerdine, PE (TX PE #85829)
 Structural Solutions, PA (TX Firm #004063)

TX

Amarr
 ENTREMATIC

MODEL P500 AMARR OLYMPUS 500
 MODEL D500 AMARR DESIGNERS CHOICE DC-500

SIZE	DRAWN BY	RLR	DATE	02/06/18	DRAWING NUMBER
B	CHECKED BY	RLR	DATE	02/06/18	IRC-P518-155-26-1

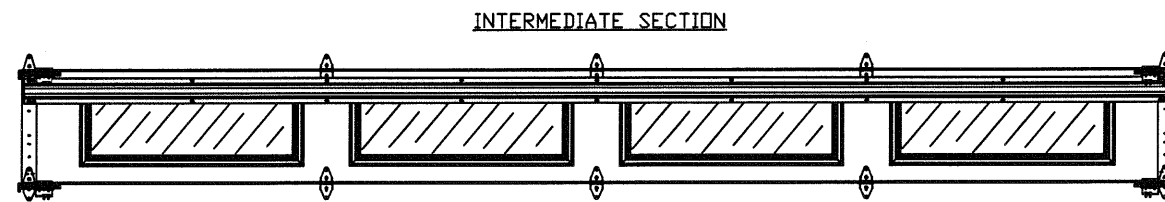
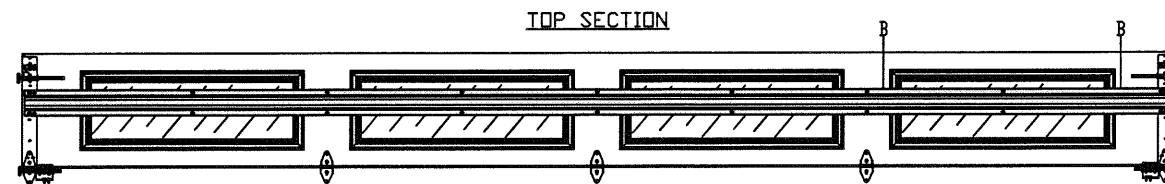
ENTREMATIC
 165 CARRIAGE COURT WINSTON-SALEM, N.C. 27105

SHEET 2 OF 3

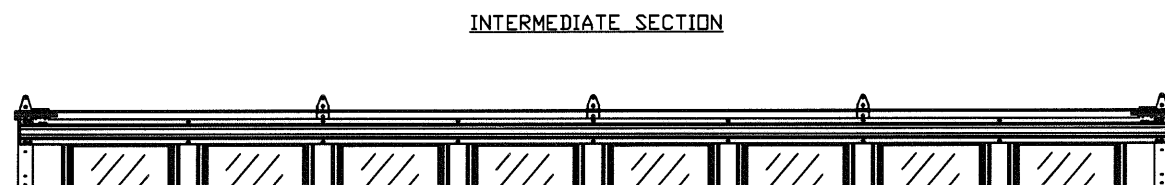
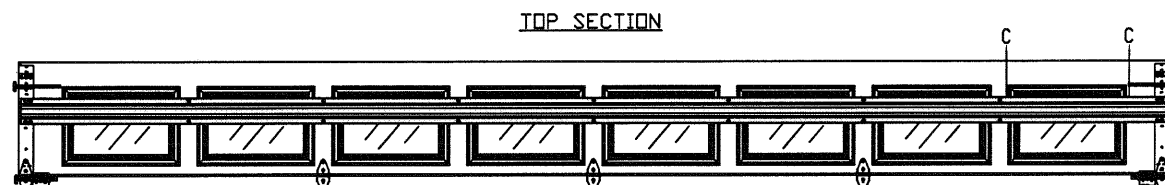
5921-G W. Friendly Ave., Greensboro, NC 27410

TABLE 2

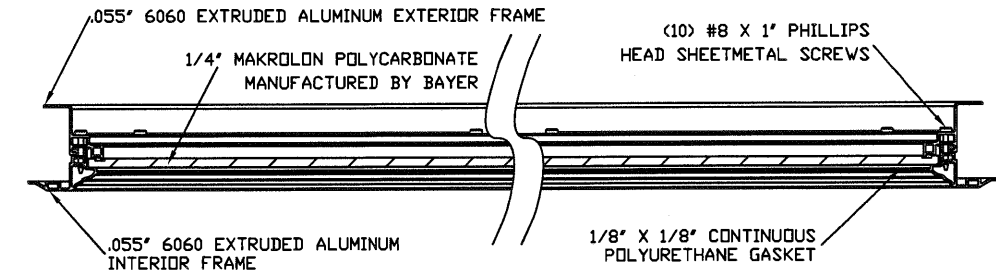
Section	Center Stile Locations (Measured from Left)		
	Width (ft)	1st (in)	2st (in)
16' 2	50.27	97.00	143.73
16' 4	51.27	98.00	144.73
16' 6	52.27	99.00	145.73
16' 8	51.34	100.00	148.66
16' 10	51.50	101.00	150.50
17' 0	53.34	102.00	150.66
17' 2	53.00	103.00	153.00
17' 4	54.00	104.00	154.00
17' 6	55.00	105.00	155.00
17' 8	54.80	106.00	157.20
17' 10	55.80	107.00	158.20
18' 0	57.25	108.00	158.75



OPTIONAL LONG PANEL GLAZED SECTION R-TRUSS AND STILE LAYOUT
N.T.S.

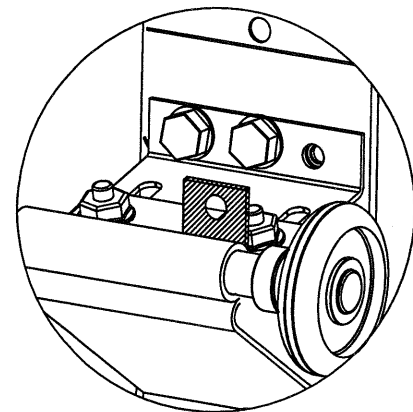


OPTIONAL SHORT PANEL GLAZED SECTION R-TRUSS AND STILE LAYOUT
N.T.S.

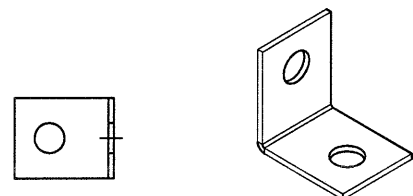


SECTION B-B IMPACT WINDOW DETAIL
N.T.S.

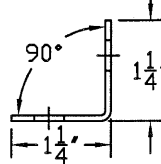
TOP FIXTURE REINFORCEMENT ILLUSTRATION



TOP FIXTURE ADDER PIECE

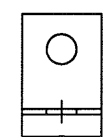


TOP VIEW

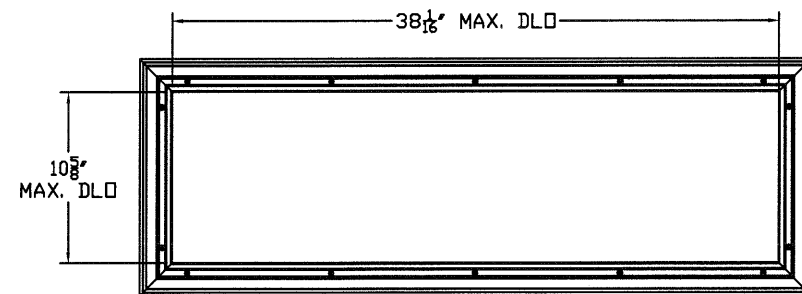


END VIEW

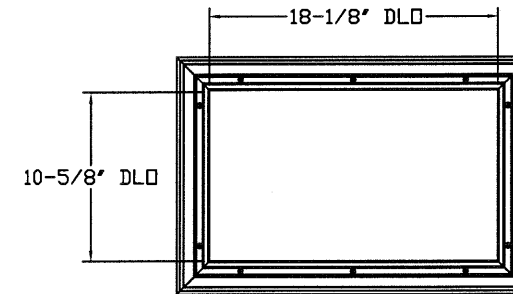
ISOMETRIC VIEW



SIDE VIEW



LONG PANEL GLAZING FASTENER DETAIL
N.T.S.



SHORT PANEL GLAZING FASTENER DETAIL
N.T.S.

REV	DESCRIPTION OF REVISIONS	DATE	BY

MAX SIZE
 18' WIDTH
 14' HEIGHT
 (DOOR HEIGHT SUBJECT TO WEIGHT LIMITATIONS)
 DESIGN LOADS
 +37.0 PSF
 -40.6 PSF
 TEST LOADS
 +55.5 PSF
 -60.9 PSF

Thomas L. Shelmerdine, PE (TX PE #85829)
 Structural Solutions, PA (TX Firm #F-004063)

TX
Amarr
 ENTREMATIC

MODEL P500 AMARR OLYMPUS 500
 MODEL D500 AMARR DESIGNERS CHOICE DC-500

SIZE	DRAWN BY	RLR	DATE	02/06/18	DRAWING NUMBER
B	CHECKED BY	RLR	DATE	02/06/18	IRC-P518-155-26-1

ENTREMATIC
 165 CARRIAGE COURT WINSTON-SALEM, N.C. 27105

5921-G W. Friendly Ave., Greensboro, NC 27410

SHEET 3 OF 3