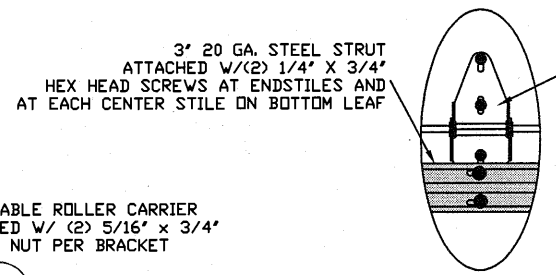
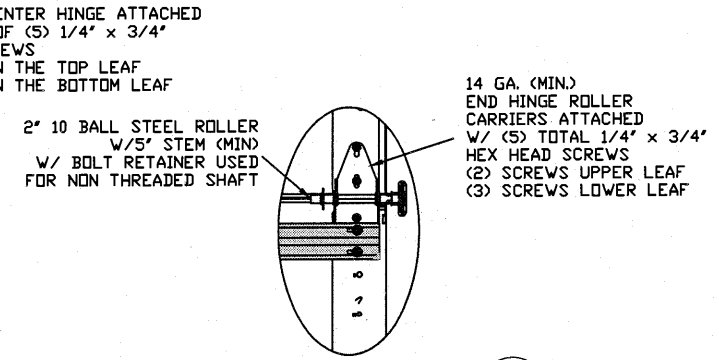


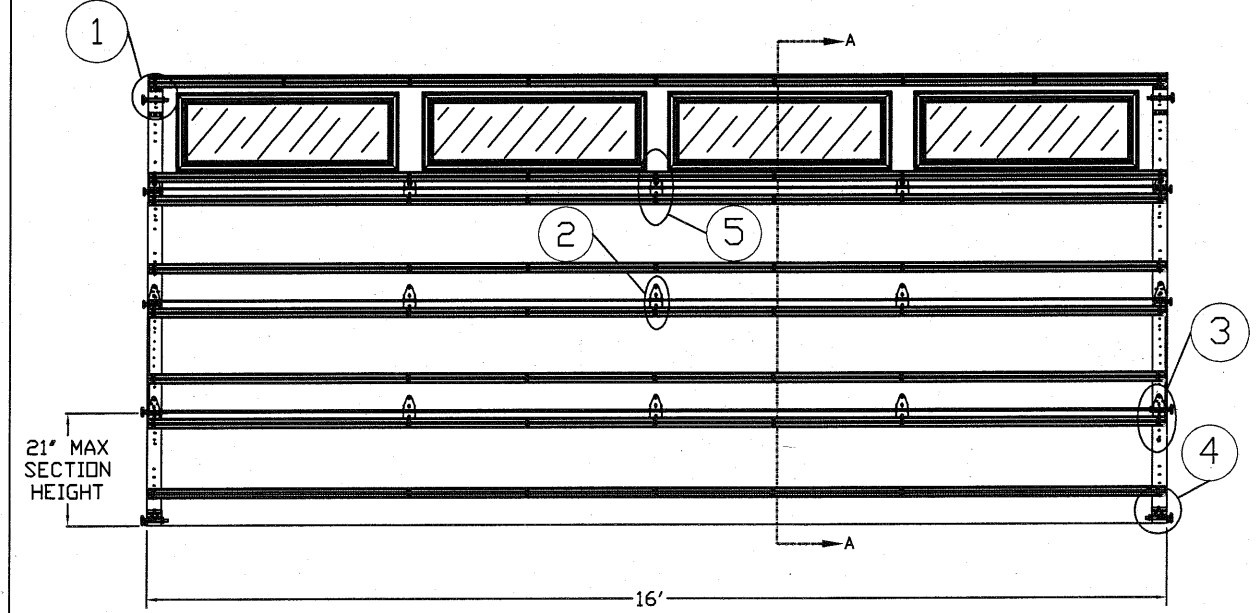
TYPICAL TOP FIXTURE
N.T.S. ①



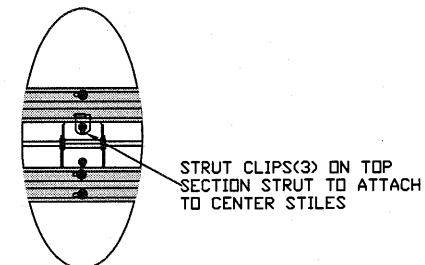
TYPICAL CENTER HINGE
N.T.S. ②



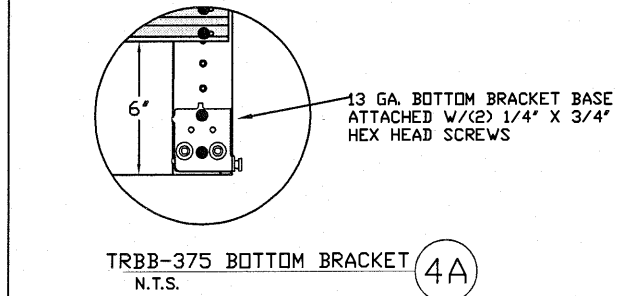
TYPICAL END HINGE
N.T.S. ③



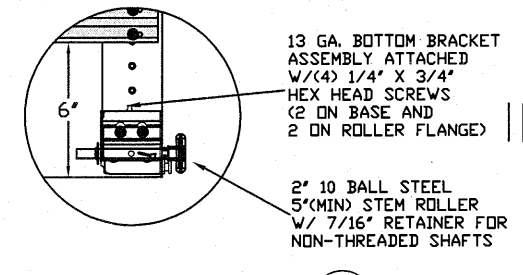
INSIDE ELEVATION
N.T.S.



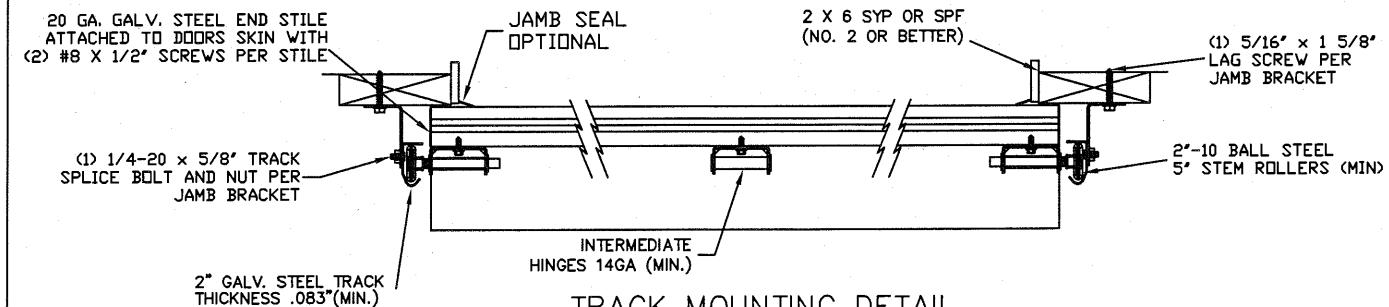
STRUT CLIP ATTACHMENT
N.T.S. ⑤



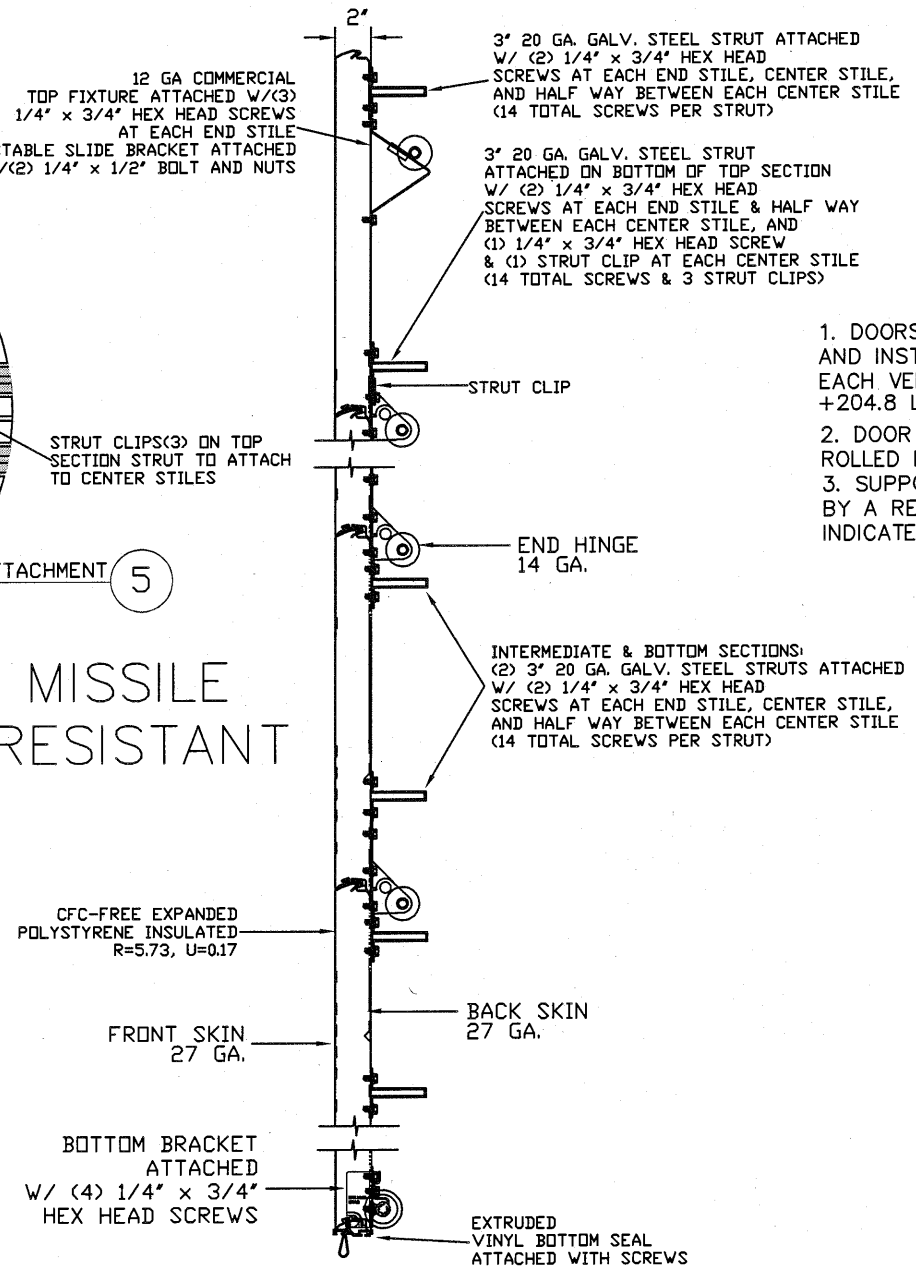
TRBB-375 BOTTOM BRACKET
N.T.S. ④A



TRBB-375 BOTTOM BRACKET
N.T.S. ④B



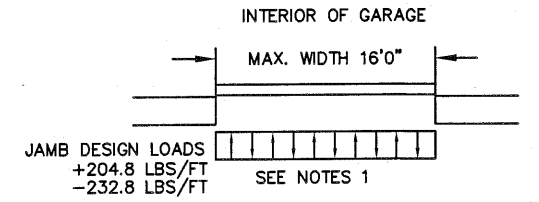
TRACK MOUNTING DETAIL
N.T.S.



SECTION A-A (SIDE VIEW)
N.T.S.

THE METHOD OF TESTING WAS IN SUBSTANTIAL CONFORMANCE WITH THE PROCEDURE DESCRIBED IN DASMA 108-05, & 115-05, AND ASTM E330-02, E1886-05, E1996-09, & F588-07. THE PRESSURES SHOWN ON THE DRAWINGS WERE CALCULATED USING ASCE 7-98/02/05 WITH THE FOLLOWING PARAMETERS (5 FEET OF DOOR WIDTH IN THE END ZONE, ROOF AT ANY SLOPE I=1.0):

WIND SPEED (MPH)	130	118	112	107	103
EXPOSURE LEVEL	B	C	C	D	D
MEAN ROOF HEIGHT	30'	15'	25'	15'	25'



SPECIFICATIONS AND NOTES

- DOORS AND HARDWARE WILL BE DESIGNED, MANUFACTURED AND INSTALLED WITH STANDARDS AS SET FORTH BY DASMA. EACH VERTICAL JAMBS RECEIVES MAXIMUM DESIGN LOADS OF: +204.8 LBS/FT & -232.8 LBS/FT
- DOOR SECTIONS SHALL BE 27 GA. MIN. (.0151") ROLLED FORMED LIGHT COMMERCIAL QUALITY
- SUPPORTING STRUCTURAL ELEMENTS SHALL BE DESIGNED BY A REGISTERED PROFESSIONAL ENGINEER FOR WIND LOADS INDICATED ON THIS DRAWING IN ADDITION TO OTHER LOADINGS.

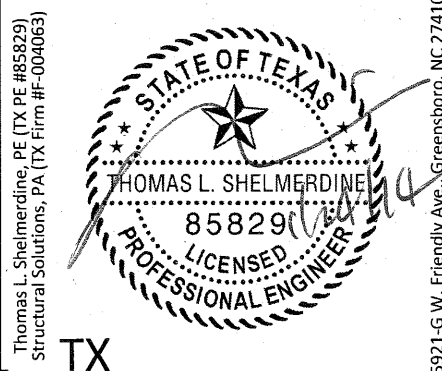
REV	DESCRIPTION OF REVISIONS	DATE	BY
A	ADDED GLAZING OPTIONS	10/28/13	RLR

MAX SIZE
16' WIDTH
14' HEIGHT

DESIGN LOADS
+25.6 PSF
-29.1 PSF

TEST LOADS
+38.4 PSF
-43.65 PSF

LARGE MISSILE IMPACT RESISTANT



TX
Amarr

165 CARRIAGE COURT WINSTON-SALEM, NC. 27105 WWW.AMARR.COM

MODEL #1600 LINCOLN 3000
MODEL #1650 HILLCREST 3000

SIZE	DRAWN BY	RLR	DATE	12/19/11	DRAWING NUMBER
B	CHECKED BY		DATE	00/00/00	IRC-1616-130-15-1
					SHEET 1 OF 3

5921-G W. Friendly Ave., Greensboro, NC 27410

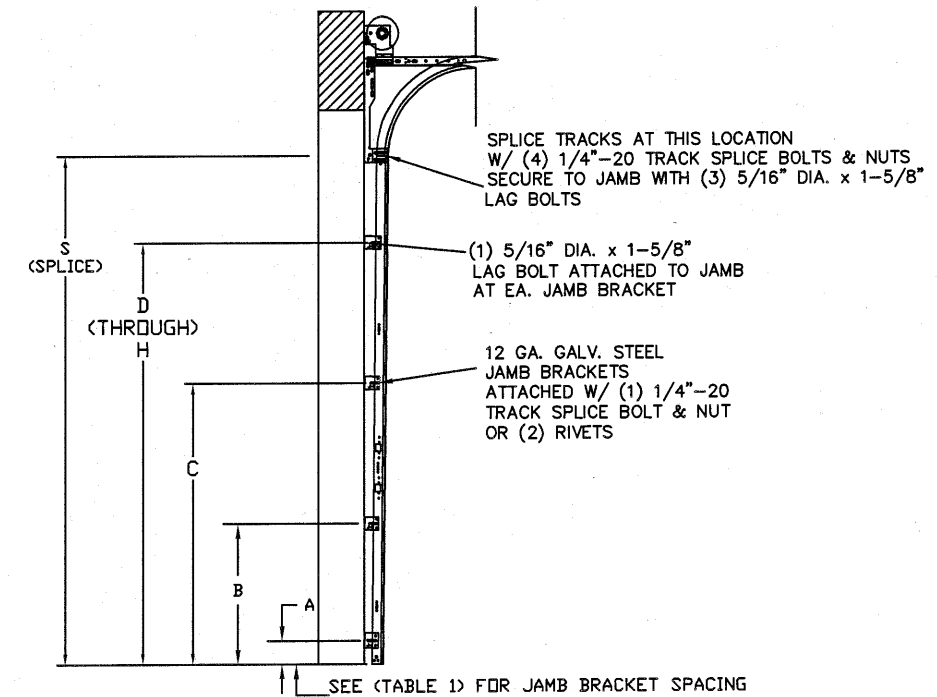
TABLE 1

DOOR HEIGHT	TRACK ATTACHMENT								SPLICE
	A	B	C	D	E	F	G	H	
6' 6"	3.5"	21"	39"	57"					70"
7'	3.5"	21"	42"	63"					76"
7' 6"	3.5"	18"	36"	54"	72"				82"
8'	3.5"	21"	39"	57"	75"				88"
8' 6"	3.5"	21"	42"	63"	81"				94"
9'	3.5"	18"	36"	54"	72"	90"			100"
9' 6"	3.5"	21"	39"	57"	75"	93"			106"
10'	3.5"	21"	42"	63"	81"	99"			112"
10' 6"	3.5"	21"	42"	63"	84"	105"			118"
11'	3.5"	21"	39"	57"	75"	93"	111"		124"
11' 6"	3.5"	21"	42"	63"	81"	99"	117"		130"
12'	3.5"	21"	42"	63"	84"	105"	123"		136"
12' 6"	3.5"	21"	39"	57"	75"	93"	111"	129"	142"
13'	3.5"	21"	42"	63"	81"	99"	117"	135"	148"
13' 6"	3.5"	21"	42"	63"	84"	105"	123"	141"	154"
14'	3.5"	21"	42"	63"	84"	105"	126"	147"	160"

ALL TRACK ATTACHMENT SPACING +/-2" WITH SYP OR SPF NO. 2 OR BETTER ONLY

TABLE 2

DOOR HEIGHT	SECTION HEIGHTS							
	Btm	#2	#3	#4	#5	#6	#7	#8
14' 0"	21"	21"	21"	21"	21"	21"	21"	21"
13' 6"	21"	21"	21"	21"	21"	18"	18"	21"
13' 0"	21"	21"	21"	18"	18"	18"	18"	21"
12' 6"	21"	18"	18"	18"	18"	18"	18"	21"
12' 0"	21"	21"	21"	21"	21"	18"	21"	
11' 6"	21"	21"	21"	18"	18"	18"	21"	
11' 0"	21"	18"	18"	18"	18"	18"	21"	
10' 6"	21"	21"	21"	21"	21"	21"		
10' 0"	21"	21"	21"	18"	18"	21"		
9' 6"	21"	18"	18"	18"	18"	21"		
9' 0"	18"	18"	18"	18"	18"	18"		
8' 6"	21"	21"	21"	18"	21"			
8' 0"	21"	18"	18"	18"	21"			
7' 6"	18"	18"	18"	18"	18"			
7' 0"	21"	21"	21"	21"				
6' 6"	21"	18"	18"	21"				



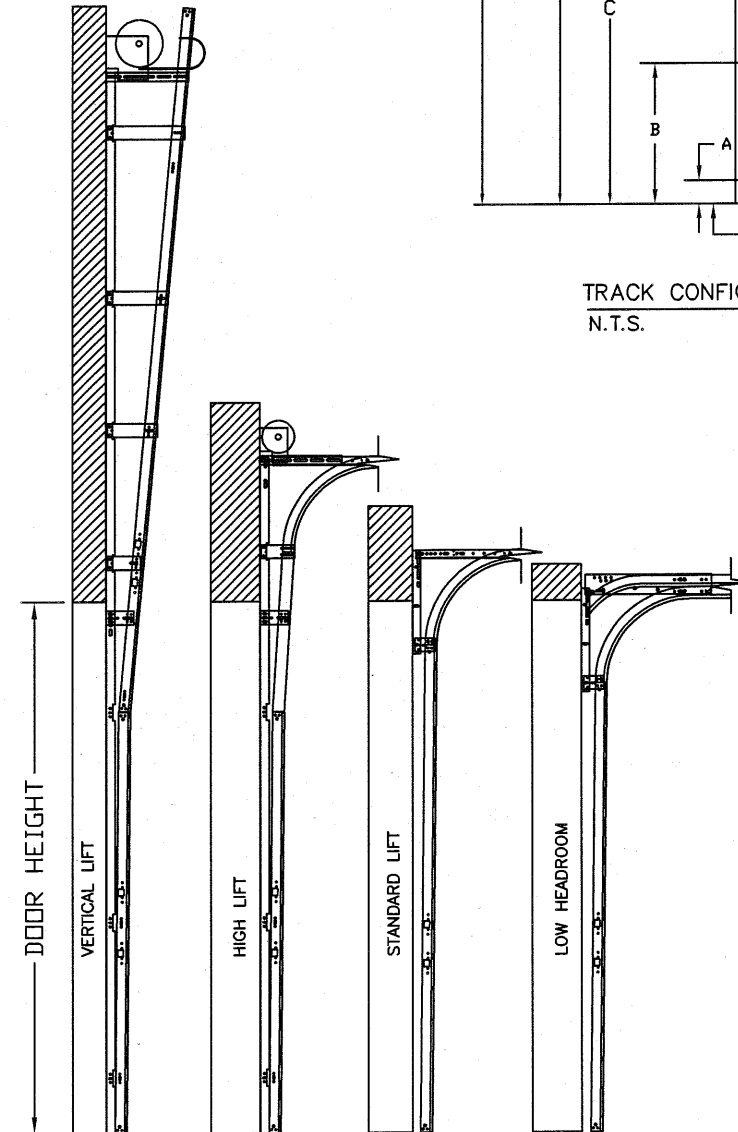
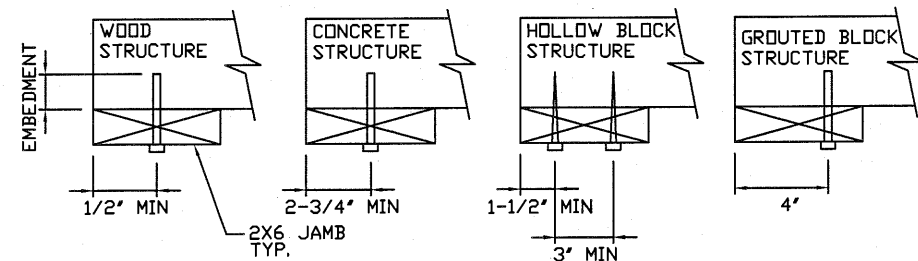
TRACK CONFIGURATION FOR 6'6" UP TO 14' TALL DOORS
N.T.S.

WOOD JAMB ATTACHMENT TO STRUCTURE

- 2 X 6 VERTICAL JAMB ATTACHMENT TO WOOD FRAME STRUCTURE
5/16" X 3" LAG SCREWS STARTING 6" FROM ENDS THEN 24" O.C. (1 1/2" EMBEDMENT)
- 2 X 6 VERTICAL JAMB ATTACHMENT TO 2,000 PSI CONCRETE
HILTI KWIK BOLT 3/8" X 4" STARTING 6" FROM ENDS THEN 24" O.C. (2 1/2" EMBEDMENT)
HILTI SLEEVE ANCHOR 3/8" X 2-3/4" STARTING 6" FROM ENDS THEN 20" O.C. (1 1/4" EMBEDMENT)
ITW/RAMSET REDHEAD (TRU-BOLT) 3/8" X 4" STARTING 6" FROM ENDS THEN 24" O.C. (2 1/2" EMBEDMENT)
- 2 X 6 VERTICAL JAMB ATTACHMENT TO HOLLOW C-90 BLOCK
SIMPSON 1/4" X 3" TITEN SCREWS STARTING 6" FROM ENDS, USE PAIRS OF FASTENERS (3" APART) AT 16" O.C. (1 1/2" EMBEDMENT)
HILTI 1/4" X 2-3/4" KWIK-CON II+ SCREWS STARTING 6" FROM ENDS, USE PAIRS OF FASTENERS (3" APART) AT 16" O.C. (1 1/4" EMBEDMENT)

- 2 X 6 VERTICAL JAMB ATTACHMENT TO GROUTED C-90 BLOCK (2000 PSI GROUT)
HILTI SLEEVE ANCHOR 3/8" X 2-3/4" STARTING 6" FROM ENDS THEN 24" O.C. (1 1/4" EMBEDMENT) (OR, USE FASTENERS FOR HOLLOW C-90 BLOCK)

*LAGS AND BOLTS CAN BE COUNTERSUNK TO PROVIDE A FLUSH MOUNTING SURFACE.
*PREPARATION OF WOOD JAMBS BY OTHERS



AVAILABLE TRACK CONFIGURATIONS
N.T.S.

REV	DESCRIPTION OF REVISIONS	DATE	BY
A	ADDED GLAZING OPTIONS	10/28/13	RLR

MAX SIZE
16' WIDTH
14' HEIGHT

DESIGN LOADS
+25.6 PSF
-29.1 PSF

TEST LOADS
+38.4 PSF
-43.65 PSF

LARGE MISSILE IMPACT RESISTANT

Thomas L. Shelmerdine, PE (TX PE #85829)
Structural Solutions, PA (TX Firm #F-004063)

TX
Amarr

165 CARRIAGE COURT WINSTON-SALEM, N.C. 27105 WWW.AMARR.COM

MODEL #1600 LINCOLN 3000
MODEL #1650 HILLCREST 3000

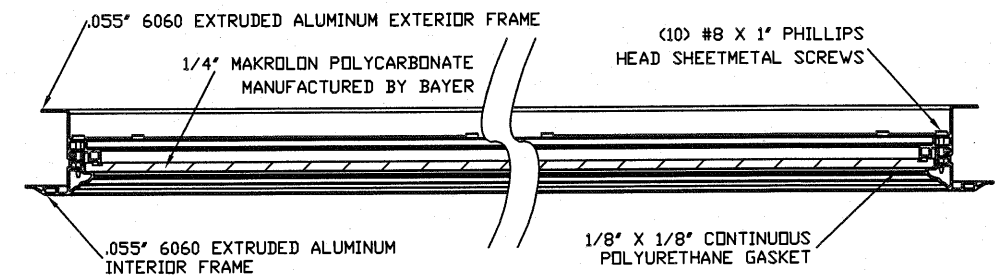
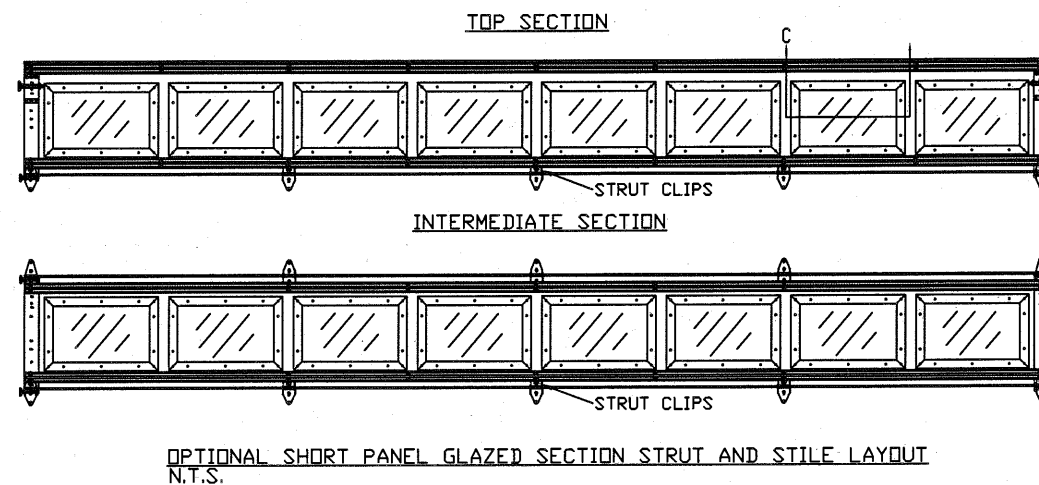
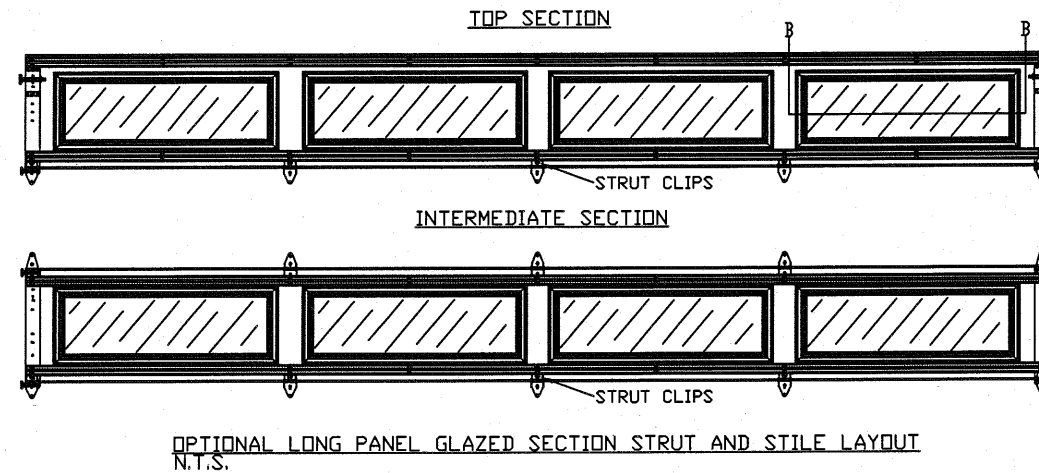
SIZE	DRAWN BY	RLR	DATE	12/19/11	DRAWING NUMBER
B	CHECKED BY		DATE	00/00/00	IRC-1616-130-15-1

SHEET 2 OF 3

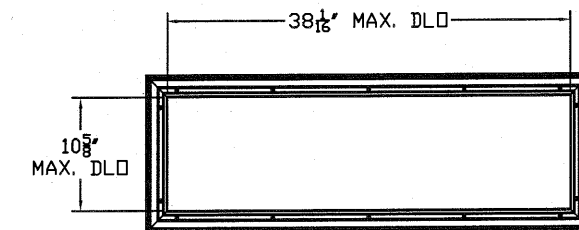
5921-G.W. Friendly Ave., Greensboro, NC 27410

TABLE 3

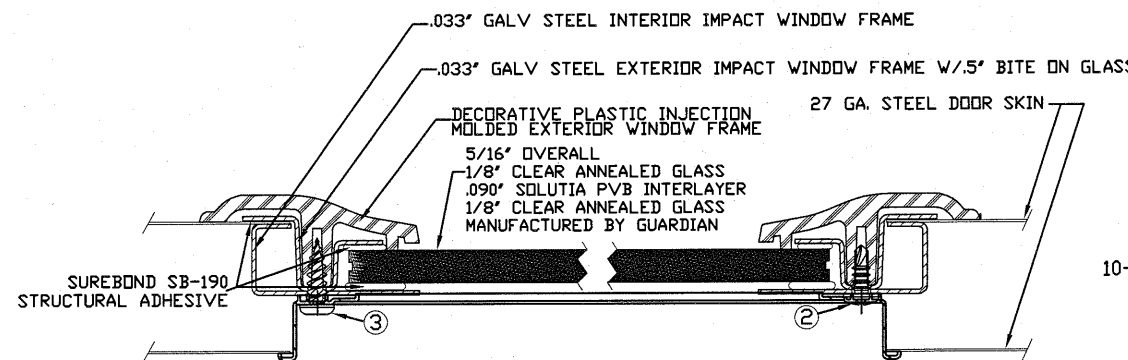
Section	Center Stile Locations (Measured from Left Edge)				
	Width (ft)	1st (in)	2st (in)	3rd (in)	4th (in)
10' 0		48.41	71.59		
10' 2		49.32	72.68		
10' 4		50.32	73.68		
10' 6		50.84	75.17		
10' 8		51.84	76.17		
10' 10		52.50	77.50		
11' 0		53.50	78.50		
11' 2		54.20	79.80		
11' 4		55.20	80.80		
11' 6		56.20	81.80		
11' 8		57.20	82.80		
11' 10		47.81	94.19		
12' 0		48.81	95.19		
12' 2		49.64	96.36		
12' 4		50.64	97.36		
12' 6		50.67	99.33		
12' 8		51.67	100.33		
12' 10		52.25	101.75		
13' 0		53.00	103.00		
13' 2		54.00	104.00		
13' 4		54.40	105.60		
13' 6		55.40	106.60		
13' 8		56.40	107.60		
13' 10		57.16	82.94	108.71	
14' 0		57.76	83.94	110.11	
14' 2		58.85	84.94	111.41	
14' 4		59.16	85.94	112.71	
14' 6		59.86	86.94	114.01	
14' 8		60.56	87.94	115.31	
14' 10		61.26	88.94	116.61	
15' 0		61.94	89.94	117.94	
15' 2		62.66	90.94	119.21	
15' 4		53.60	79.20	104.80	130.40
15' 6		46.62	93.00	139.38	
15' 8		47.62	94.00	140.38	
15' 10		48.62	95.00	141.38	
16' 0		49.62	96.00	142.38	



SECTION B-B IMPACT WINDOW DETAIL
N.T.S.

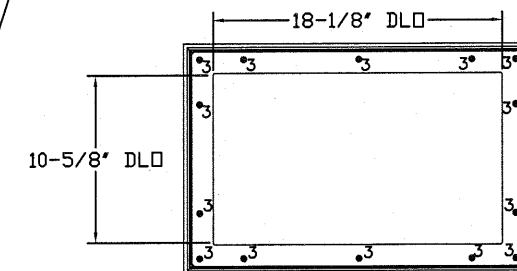


LONG PANEL GLAZING FASTENER DETAIL
N.T.S.



- 3/16" X 1/2" SCREW - USED TO FASTEN THE STEEL EXTERIOR IMPACT WINDOW FRAME TO THE STEEL INTERIOR IMPACT WINDOW FRAME.
- 11/64" X 1/2" SCREW - USED TO FASTEN DECORATIVE PLASTIC MOLDED WINDOW FRAME TO THE ASSEMBLY

SECTION C-C IMPACT WINDOW DETAIL
N.T.S.



IMPACT GLAZING FASTENER DETAIL
N.T.S.
GLAZING MEETS ASTM E1300-04

REV	DESCRIPTION OF REVISIONS	DATE	BY
A	ADDED GLAZING OPTIONS	10/28/13	RLR

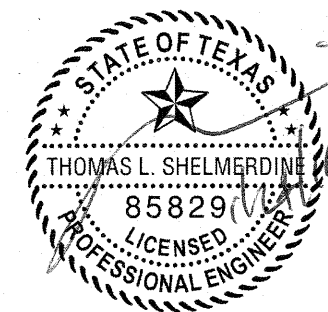
MAX SIZE
16" WIDTH
14" HEIGHT

DESIGN LOADS
+25.6 PSF
-29.1 PSF

TEST LOADS
+38.4 PSF
-43.65 PSF

LARGE MISSILE IMPACT RESISTANT

Thomas L. Shelmerdine, PE (TX PE #85829)
Structural Solutions, PA (TX Firm #F-004063)



TX
Amarr

165 CARRIAGE COURT WINSTON-SALEM, N.C. 27105 WWW.AMARR.COM

MODEL #1600 LINCOLN 3000
MODEL #1650 HILLCREST 3000

SIZE	DRAWN BY	RLR	DATE	12/19/11	DRAWING NUMBER
B	CHECKED BY		DATE	00/00/00	IRC-1616-130-15-1

SHEET 3 OF 3