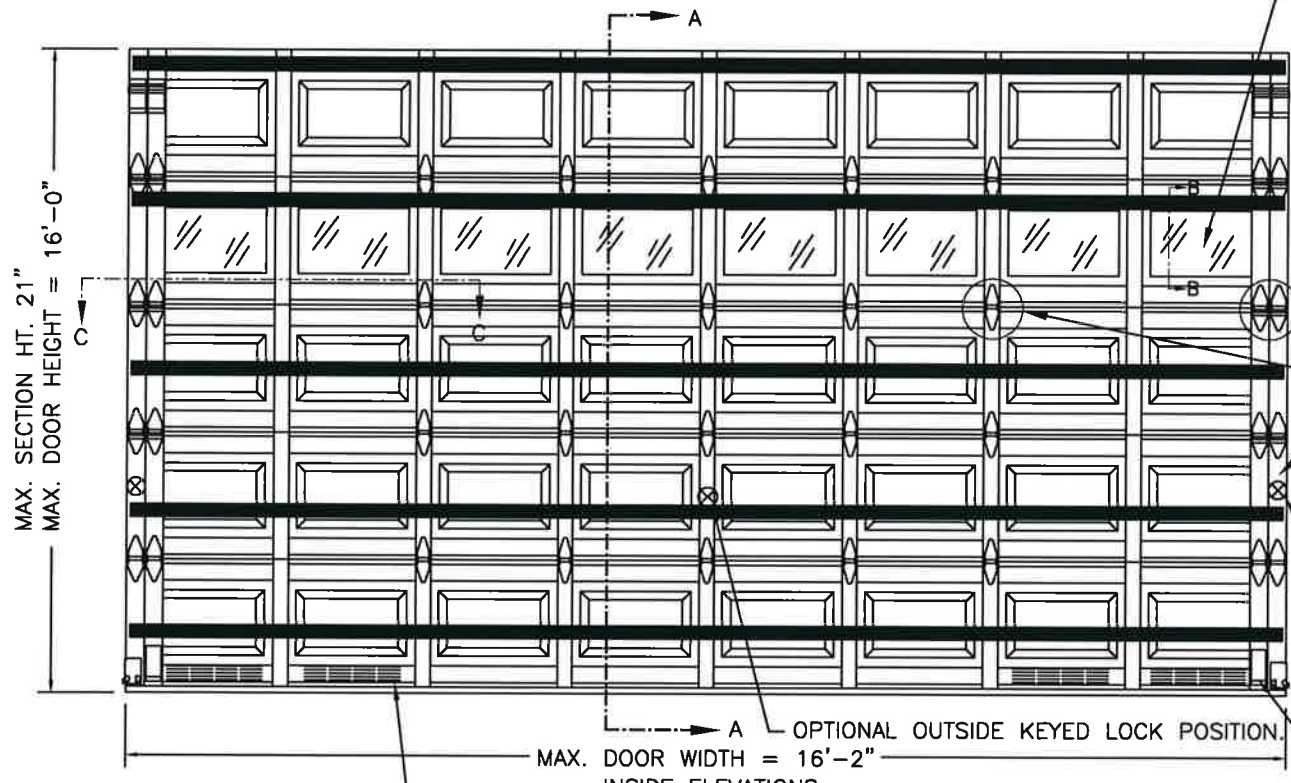


'CLASSIC' RAISED PANEL EMBOSS DOORS				'CARRIAGE HOUSE' RAISED PANEL EMBOSS DOORS	
MODELS	24 GA	25 GA	24 GA	MODELS	25 GA
CLOPAY	84A, 94	73, 75	98	CLOPAY 'GALLERY'	GD5S, GR5S
IDEAL	4RST	6RST	4F	HOLMES 'ARTISTRY'	AR5S
HOLMES	48, 48B	42, 42B	--	IDEAL 'CARRIAGE HOUSE'	ED5S
	SHORT PANEL		FLUSH	SHORT PANEL	

SHEET:  
1 OF 4

REVISIONS					
REV. NO.	ZONE:	DATE:	ECN NO.	APPVD:	DESCRIPTION
07	-	07/2021	-	JDW	UPDATED TITLE BLOCK AND ADDED COMPLIANCE STATEMENT.

THIS PRODUCT COMPLIES WITH THE 2018 IBC/IRC.



OPTIONAL IMPACT RESISTANT GLAZING. SEE SECTION B-B ON SHEET TWO FOR DETAILS. (GLAZING SHOWN IN INTERMEDIATE SECTION.) MAX. IMPACT RESISTANT GLAZING SIZE IS 18-1/2"x11".

ONE INTERMEDIATE STILE BETWEEN EACH EMBOSS LOCATION. ATTACHED W/ TOG-L-LOC (TOP & BTM) AND URETHANE ADHESIVE (ALONG CENTER).

MAX. SECTION HT. 21"  
MAX. DOOR HEIGHT = 16'-0"

VIEW "B".

VIEW "C".

16 GA. END STILES ATTACHED TO DOOR SKIN WITH PATENTED TOG-L-LOC SYSTEM (TOP, BOTTOM & CENTER). ATTACHED TO TOP AND BOTTOM RAIL WITH PATENTED TOG-L-LOC SYSTEM.

TWO POINT LOCKING INTO TRACK.

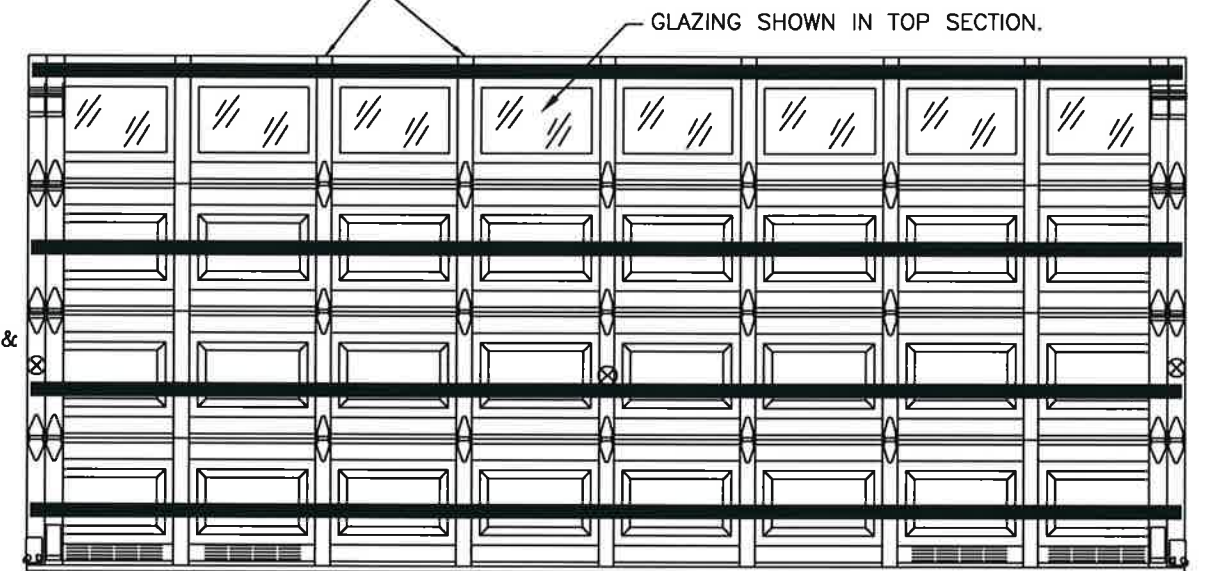
(2) LHR TOP BRACKETS USED AS INNER BOTTOM BRACKET.  
(1) 3-IN ROLLER CARRIER (P/N 0120394) USED WITH 3" TRACK.

LOCATION OF OPTIONAL VENTS. TOTAL VENT OPENINGS: 60 IN<sup>2</sup> PER VEHICLE.

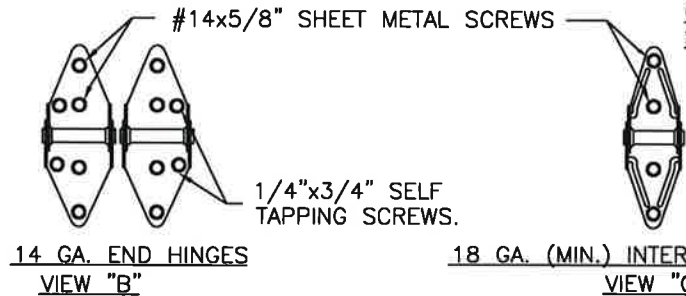
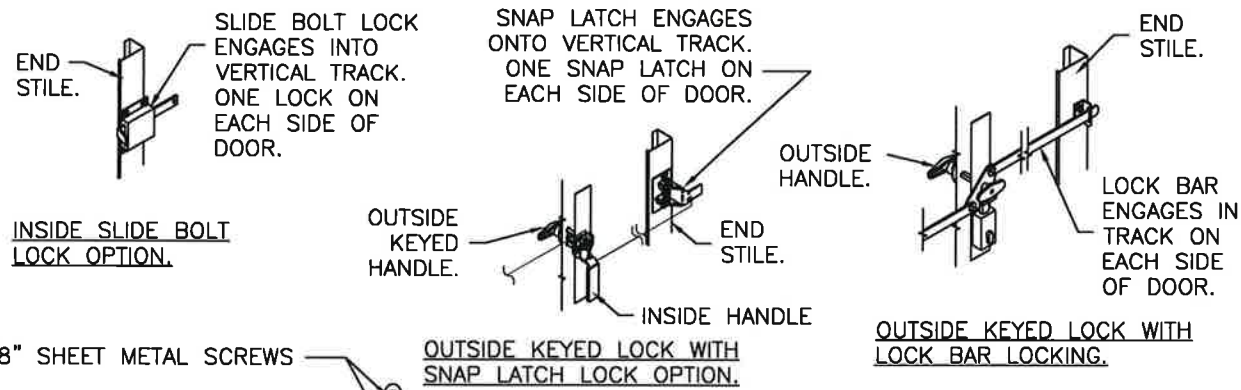
DOOR HEIGHT	# OF SECTIONS
UP TO 7'0"	4
7'3" TO 8'9"	5
9'0" TO 10'6"	6
10'9" TO 12'3"	7
12'6" TO 14'0"	8
14'3" TO 15'9"	9
16'0"	10
MAX SECTION HEIGHT: 21'	

'CLASSIC' RAISED PANEL EMBOSS DOORS		
DOOR WIDTH	# OF INTERM. STILES	# OF INTERM. HINGES
9'2" TO 9'10"	3	3
10'0" TO 11'10"	4	4
12'0" TO 13'10"	5	3
14'0" TO 15'10"	6	4
16'0" TO 16'2"	7	5

'CARRIAGE HOUSE' RAISED PANEL EMBOSS DOORS		
DOOR WIDTH	# OF INTERM. STILES	# OF INTERM. HINGES
9'2" TO 10'0"	3	3
10'2" TO 11'4"	N/A	N/A
11'6" TO 13'10"	5	4
14'0" TO 16'0"	7	5



GLAZING SHOWN IN TOP SECTION.



14 GA. END HINGES  
VIEW "B"

18 GA. (MIN.) INTERMEDIATE HINGE  
VIEW "C"



*Mark Westerfield*  
7/21/21

DESIGN ENGINEER:  
MARK WESTERFIELD, P.E.  
FLORIDA P.E. #48495, NC P.E. #23832, TEXAS P.E. #91513

DESIGN LOADS: +36.0 P.S.F. & -42.0 P.S.F.  
TEST LOADS: +54.0 P.S.F. & -63.0 P.S.F.

Unless Stated Otherwise  
TOLERANCES are  
.0 = ±.031  
.00 = ±.015  
.000 = ±.005  
.0000 = ±.001  
Degrees = ±1/2"  
Unless Stated Otherwise  
DIMENSIONS ARE IN INCHES.

**Glopay** CORPORATION  
8585 Duke Boulevard  
Mason, OH 45040 USA  
Tel. No. 513-770-4800  
Fax No. 513-770-4853

MANUFACTURING PRODUCT CODE  
PAN-2F153

PART NO.: N/A

WINDLOAD RATING  
W6 DP36T

DESCRIPTION: 2" STEEL PAN DOORS 16'2"W (SEE TABLE FOR MODELS)  
DRAWN BY: SH DATE: 11/19/12 SCALE: NTS DWG. SIZE B  
CHECKED BY: SH DATE: 11/20/12 SHEET 1 OF 4  
DWG. NO.: 104710 VER: TDI

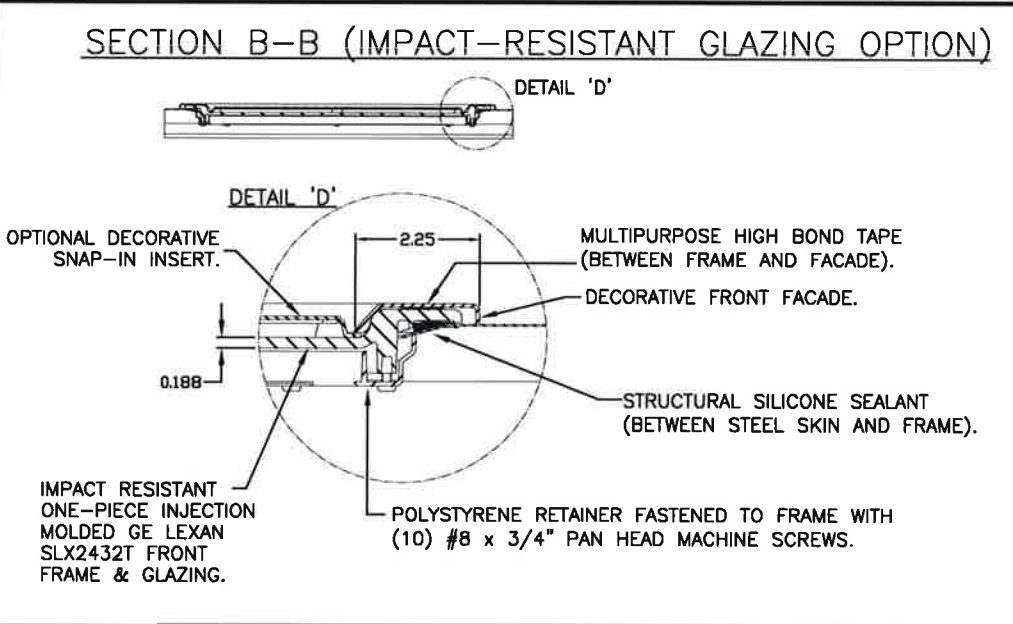
'CLASSIC' RAISED PANEL EMBOSS DOORS			
MODELS	24 GA	25 GA	24 GA
CLOPAY	84A, 94	73, 75	98
IDEAL	4RST	6RST	4F
HOLMES	48, 48B	42, 42B	--
	SHORT PANEL	FLUSH	

'CARRIAGE HOUSE' RAISED PANEL EMBOSS DOORS	
MODELS	25 GA
CLOPAY 'GALLERY'	GD5S, GR5S
HOLMES 'ARTISTRY'	AR5S
IDEAL 'CARRIAGE HOUSE'	ED5S
	SHORT PANEL

SHEET:  
2 OF 4

REVISIONS					
REV. NO.	ZONE	DATE	ECN NO.	APPVD:	DESCRIPTION
07	-	-	-	-	SEE REVISION HISTORY ON SHEET ONE.

**IMPACT-RESISTANT CONSTRUCTION:**  
 SOLID DOORS (NO GLAZING) OR DOORS WITH OPTIONAL IMPACT-RESISTANT GLAZING ARE IMPACT-RESISTANT. OPTIONAL INJECTION-MOLDED POLYCARBONATE FRONT FRAME AND GLAZING IS GE LEXAN SLX2432T, AN APPROVED CC2 PLASTIC IN ACCORDANCE WITH IBC/FBC 2606 AND AN APPROVED C1 PLASTIC IN ACCORDANCE WITH FBC 2612. THE ENTIRE DOOR ASSEMBLY INSTALLED IN COMPLIANCE WITH THIS SECTION MEETS THE WIND LOAD REQUIREMENTS OF THE FLORIDA BUILDING CODE AND INTERNATIONAL BUILDING CODE AND IS LARGE- AND SMALL-MISSILE IMPACT RESISTANT.



**IMPACT-RESISTANT ASSEMBLY DETAILS  
DRAWING 104710**



*Mark Westerfield*  
7/21/21

DESIGN ENGINEER:  
 MARK WESTERFIELD, P.E.  
 FLORIDA P.E. #48495, NC P.E. #23832, TEXAS P.E. #91513

DESIGN LOADS: +36.0 P.S.F. & -42.0 P.S.F.  
 TEST LOADS: +54.0 P.S.F. & -63.0 P.S.F.

Unless Stated Otherwise  
 TOLERANCES are  
 .0 = ±.031  
 .00 = ±.015  
 .000 = ±.005  
 .0000 = ±.001  
 Degrees = ±1/2'  
 Unless Stated Otherwise  
 DIMENSIONS ARE IN INCHES.

**Clopay** CORPORATION  
 8585 Duke Boulevard  
 Mason, OH 45040 USA  
 Tel. No. 513-770-4800  
 Fax No. 513-770-4853

MANUFACTURING PRODUCT CODE  
 PAN-2F153

PART NO.: N/A

WINDLOAD RATING  
 W6 DP36T

DESCRIPTION: 2" STEEL PAN DOORS 16'2"W (SEE TABLE FOR MODELS)

DRAWN BY: SH DATE: 11/19/12

SCALE: NTS DWG. B

CHECKED BY: SH DATE: 11/20/12

SHEET 2 OF 4 SIZE B

DWG. NO.: 104710

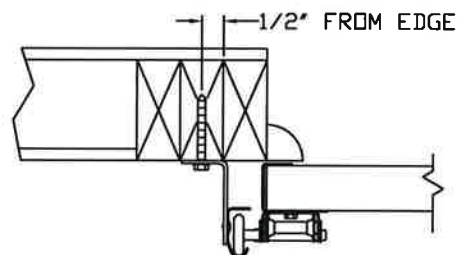
VER: TDI

'CLASSIC' RAISED PANEL EMBOSS DOORS				'CARRIAGE HOUSE' RAISED PANEL EMBOSS DOORS	
MODELS	24 GA	25 GA	24 GA	MODELS	25 GA
CLOPAY	84A, 94	73, 75	98	CLOPAY 'GALLERY'	GD5S, GR5S
IDEAL	4RST	6RST	4F	HOLMES 'ARTISTRY'	AR5S
HOLMES	48, 48B	42, 42B	--	IDEAL 'CARRIAGE HOUSE'	ED5S
	SHORT PANEL		FLUSH	SHORT PANEL	

SHEET		REVISIONS				
REV. NO.	ZONE	DATE	ECN NO.	APPVD:	DESCRIPTION	
3 OF 4	07	-	-	SH	SEE REVISION HISTORY ON SHEET ONE.	

IN THE CASE OF GYPSUM WALLBOARD LOCATED AT OR NEAR THE DOOR OPENING LOCATION THERE ARE TWO ACCEPTABLE ALTERNATIVES:

- 1) THE WALLBOARD CAN BE CUT AWAY FROM THE DOOR OPENING AND 2X6 SOUTHERN YELLOW PINE WOOD JAMBS MOUNTED DIRECTLY TO THE SUPPORTING STRUCTURE TO CREATE THE MOUNTING SURFACE. ALTERNATIVELY, THE BRACKETS MAY BE ATTACHED DIRECTLY TO THE SUPPORTING STRUCTURE. SEE DETAIL BELOW. THE CENTER OF SCREW HOLE MUST BE AT LEAST 1/2" FROM BOTH EDGES FOR A 5/16" LAG SCREW.
- 2) IF THE WALLBOARD IS NOT CUT AWAY TO EXPOSE THE UNDERLYING STRUCTURE (WOOD FRAMING MEMBERS), A 2X6 SOUTHERN YELLOW PINE WOOD BUCK OVER SHALL BE INSTALLED THE WALLBOARD FRAMING THE OPENING USING THE JAMB ATTACHMENT FASTENERS LISTED BELOW. HOWEVER, THE JAMB ATTACHMENT FASTENERS MUST BE OF A SUFFICIENT INCREASED LENGTH TO ACCOUNT FOR THE THICKNESS OF THE WALLBOARD TO ENSURE PROPER FASTENER EMBEDMENT INTO THE STRUCTURAL FRAMING MEMBERS OF THE SUPPORTING STRUCTURE.



**VERTICAL JAMB ATTACHMENT (WOOD FRAME BUILDINGS):**

3/8"x3" LAG SCREWS ON 22" CENTERS. 1-1/8" MIN. O.D. WASHER REQUIRED. LAG SCREWS MAY BE COUNTERSUNK (BUT NOT REQUIRED) TO PROVIDE A FLUSH MOUNTING SURFACE. HORIZONTAL JAMBS DO NOT TRANSFER LOAD.

**VERTICAL JAMB ATTACHMENT (C-90 BLOCK OR 2,000 PSI MIN. CONCRETE COLUMN):**

3/8"x3" SLEEVE ANCHOR BOLTS ON 13" CENTERS (2,000 PSI MIN. CONCRETE). WASHERS INCLUDED WITH SLEEVE ANCHORS.

OR  
1/4"x3" TAPCON SCREWS ON 11" CENTERS (2,000 PSI MIN. CONCRETE) OR 6" CENTERS (C-90 BLOCK). 1" MIN. O.D. WASHERS REQUIRED WITH TAPCONS. ANCHORS MAY BE COUNTERSUNK (BUT NOT REQUIRED) TO PROVIDE A FLUSH MOUNTING SURFACE. HORIZONTAL JAMBS DO NOT TRANSFER LOAD.

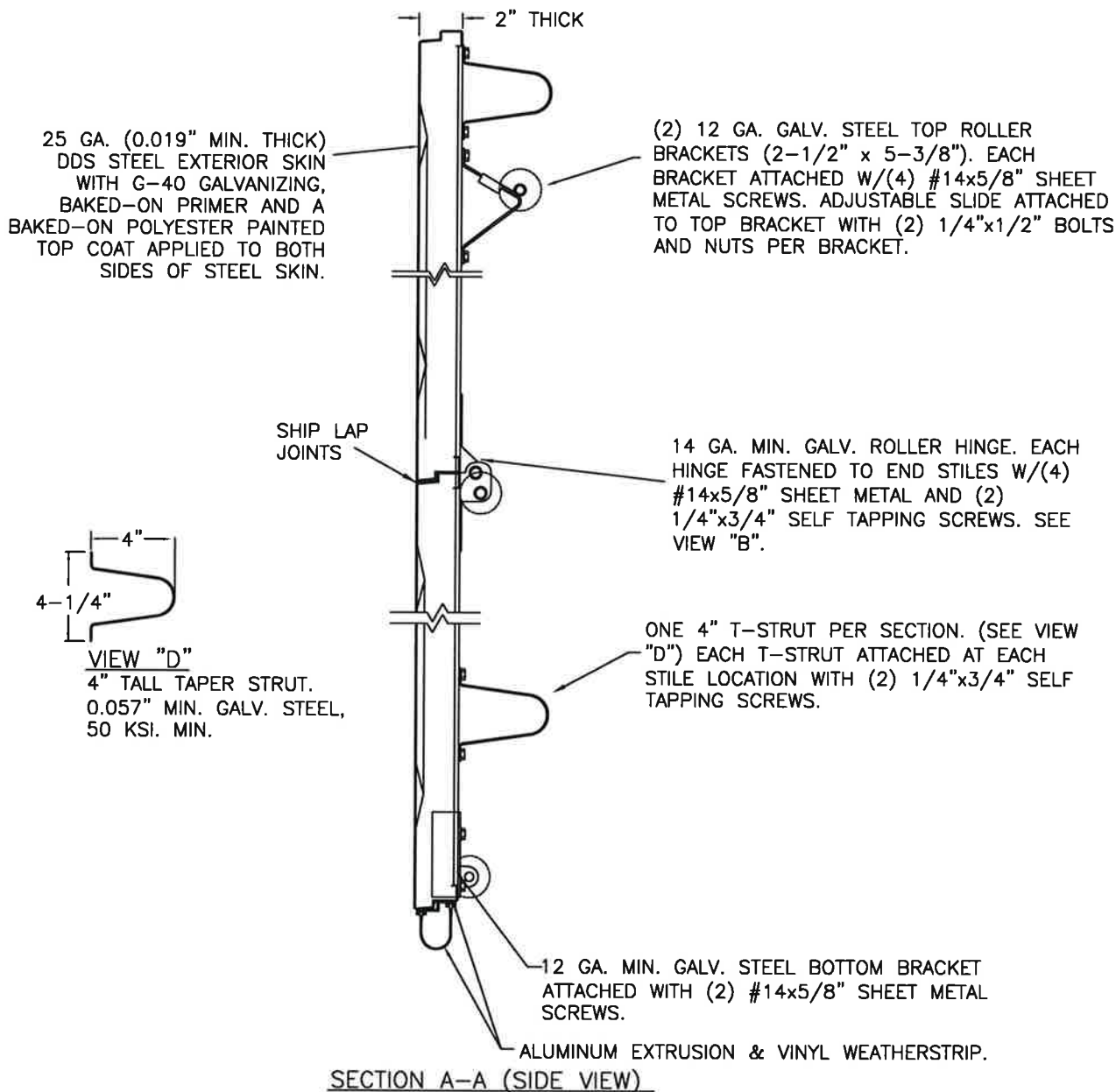
**OTHER JAMB CONFIGURATIONS:** REFER TO DASMA TDS-161. A LICENSED DESIGN PROFESSIONAL MAY ALSO BE EMPLOYED TO APPROVE ALTERNATE FASTENERS AND/OR JAMB CONFIGURATIONS.

SEE ADDITIONAL DETAILS IN "CONNECTING JAMB TO EXISTING STRUCTURES" JAMB FASTENER ANALYSIS CBPC-JFA-0001 (AVAILABLE ON TDI WEBSITE OR FROM MANUFACTURER).

**NOTE:** THE DESIGN OF THE SUPPORTING STRUCTURAL ELEMENTS SHALL BE THE RESPONSIBILITY OF THE PROFESSIONAL OF RECORD FOR THE BUILDING OR STRUCTURE AND IN ACCORDANCE WITH CURRENT BUILDING CODES FOR THE LOADS LISTED ON THE DRAWING.



DESIGN ENGINEER:  
MARK WESTERFIELD, P.E.  
FLORIDA P.E. #48495, NC P.E. #23832, TEXAS P.E. #91513



DESIGN LOADS: +36.0 P.S.F. & -42.0 P.S.F.  
TEST LOADS: +54.0 P.S.F. & -63.0 P.S.F.

Unless Stated Otherwise TOLERANCES are

.0	= ±.031
.00	= ±.015
.000	= ±.005
.0000	= ±.001
Degrees	= ±1/2'

Unless Stated Otherwise DIMENSIONS ARE IN INCHES.

**Clopay CORPORATION**  
8585 Duke Boulevard  
Mason, OH 45040 USA  
Tel. No. 513-770-4800  
Fax No. 513-770-4853

DESCRIPTION: 2" STEEL PAN DOORS 16'2"W (SEE TABLE FOR MODELS)		WINDLOAD RATING <b>W6 DP36T</b>	
DRAWN BY: SH	DATE: 11/19/12	SCALE: NTS	DWG. SIZE: <b>B</b>
CHECKED BY: SH	DATE: 11/20/12	SHEET 3 OF 4	VER: TDI
DWG. NO.: 104710			

MANUFACTURING PRODUCT CODE  
**PAN-2F153**

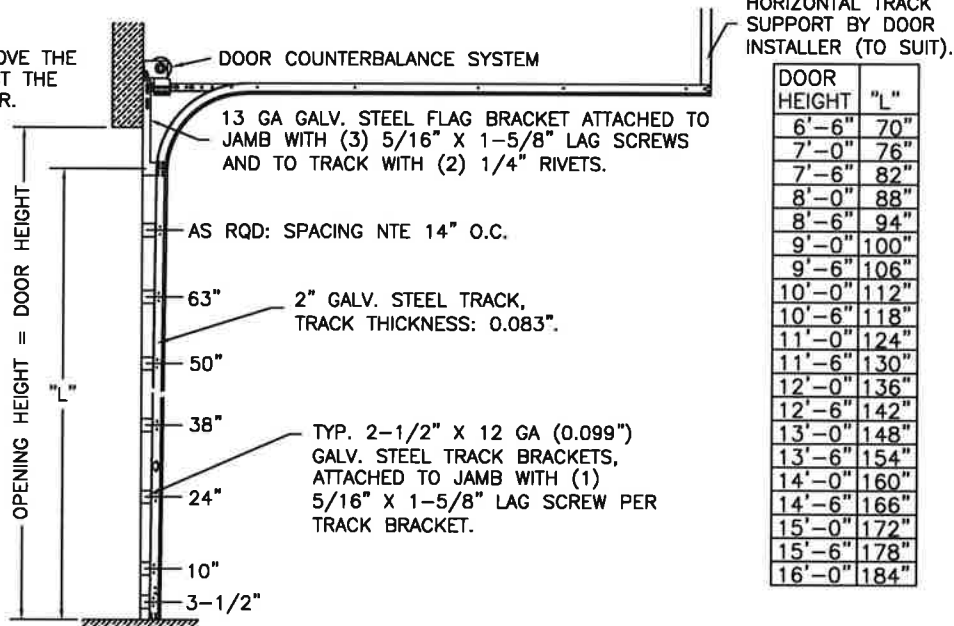
PART NO.: N/A

'CLASSIC' RAISED PANEL EMBOSS DOORS				'CARRIAGE HOUSE' RAISED PANEL EMBOSS DOORS	
MODELS	24 GA	25 GA	24 GA	MODELS	25 GA
CLDPAY	84A, 94	73, 75	98	CLDPAY 'GALLERY'	GD5S, GR5S
IDEAL	4RST	6RST	4F	HOLMES 'ARTISTRY'	AR5S
HOLMES	48, 48B	42, 42B	--	IDEAL 'CARRIAGE HOUSE'	ED5S
	SHORT PANEL		FLUSH	SHORT PANEL	

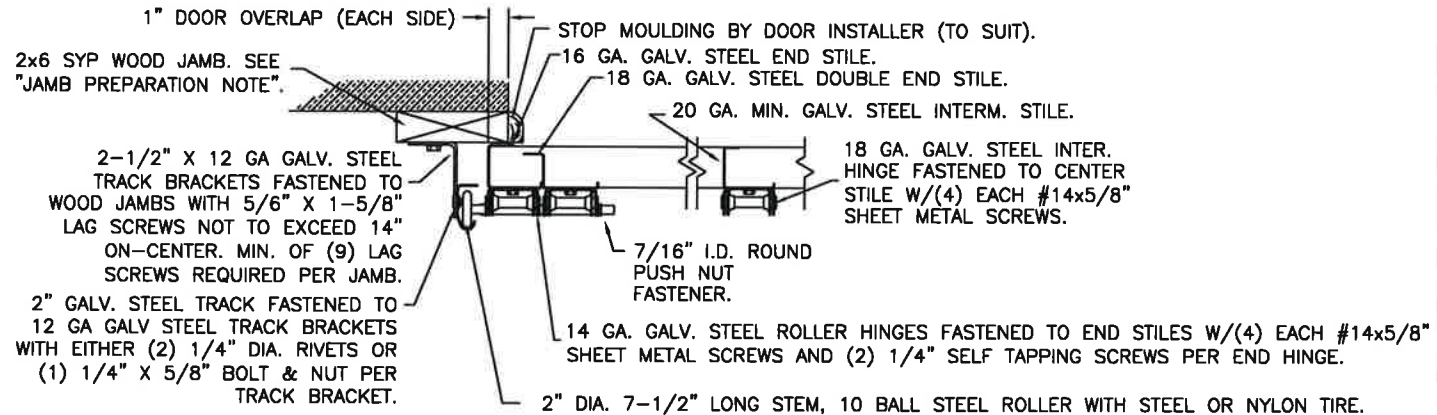
SHEET:	REVISONS					
4 OF 4	REV. NO.	ZONE:	DATE:	ECN NO.	APPVD:	DESCRIPTION
	07	-	-	-	SH	SEE REVISION HISTORY ON SHEET ONE.

NOTE: TRACK CONFIGURATION ABOVE THE DOOR OPENING DOES NOT AFFECT THE WIND LOAD RATING OF THIS DOOR.

2" TRACK CONFIGURATION.



JAMB CONFIGURATION FOR 2" TRACK.



SECTION C-C

PREPARATION OF JAMBS BY OTHERS.

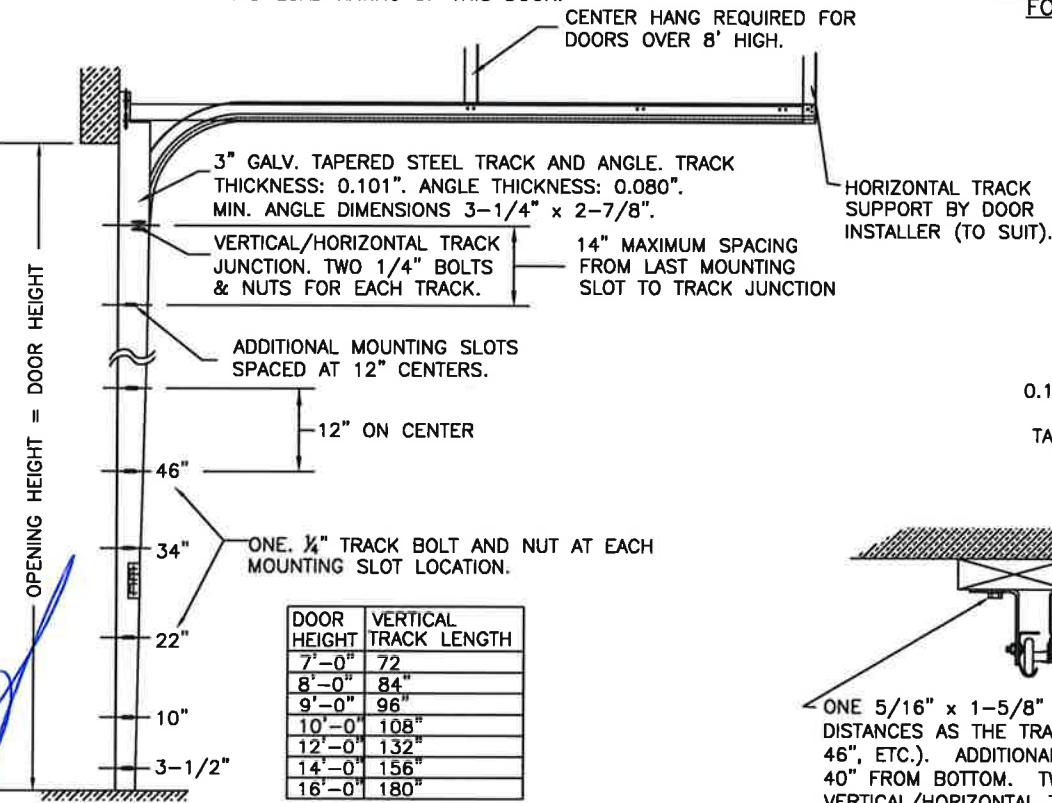
LHR BRACKET (2-1/2" x 5-3/4" x 12GA) ATTACHED WITH (2) 1/4" x 3/4" SELF TAPPING SCREWS. NOTE THAT LHR BRACKETS ARE ALSO USED WITH "DOUBLE END STILE" AS SHOWN IN ZONE B-3 SHEET 1.



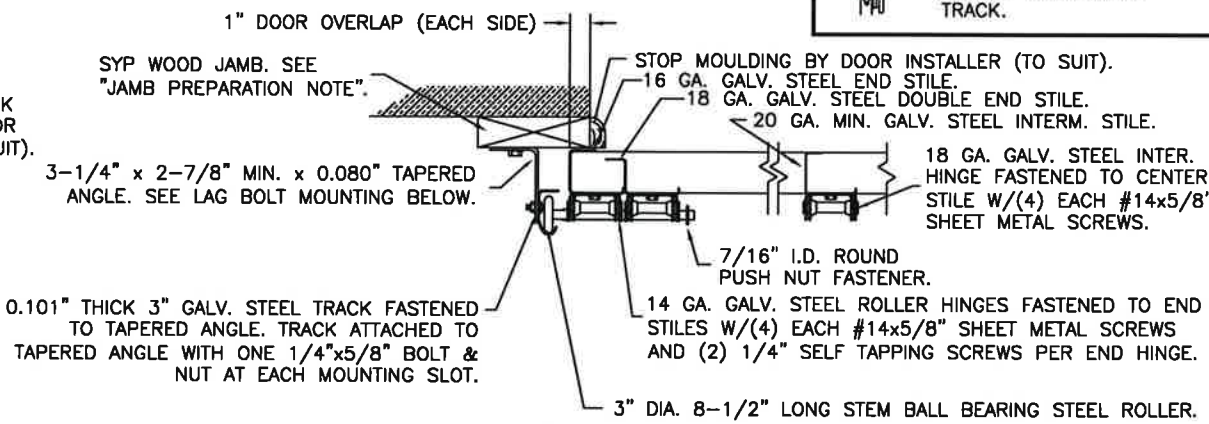
DOUBLE TRACK LOW HEADROOM OPTION (AVAIL. FOR BOTH 2" AND 3" TRACK)

3" TRACK CONFIGURATION.

NOTE: TRACK CONFIGURATION ABOVE THE DOOR OPENING DOES NOT AFFECT THE WIND LOAD RATING OF THIS DOOR.



JAMB CONFIGURATION FOR 3" TRACK.



SECTION C-C

PREPARATION OF JAMBS BY OTHERS.

DESIGN LOADS: +36.0 P.S.F. & -42.0 P.S.F.  
TEST LOADS: +54.0 P.S.F. & -63.0 P.S.F.

Unless Stated Otherwise TOLERANCES are  
.0 = ±.031  
.00 = ±.015  
.000 = ±.005  
.0000 = ±.001  
Degrees = ±1/2'  
Unless Stated Otherwise DIMENSIONS ARE IN INCHES.

**Clopay** CORPORATION  
8585 Duke Boulevard  
Mason, OH 45040 USA  
Tel. No. 513-770-4800  
Fax No. 513-770-4853

MANUFACTURING PRODUCT CODE  
PAN-2F153

PART NO.: N/A

WINDLOAD RATING  
W6 DP36T

DESCRIPTION: 2" STEEL PAN DOORS 16'2"W (SEE TABLE FOR MODELS)	DATE: 11/19/12	SCALE: NTS	DWG. SIZE B
DRAWN BY: SH	DATE: 11/20/12	SHEET 4 OF 4	
CHECKED BY: SH			
DWG. NO.: 104710		VER: TDI	



DESIGN ENGINEER:  
MARK WESTERFIELD, P.E.  
FLORIDA P.E. #48495, NC P.E. #23832, TEXAS P.E. #91513