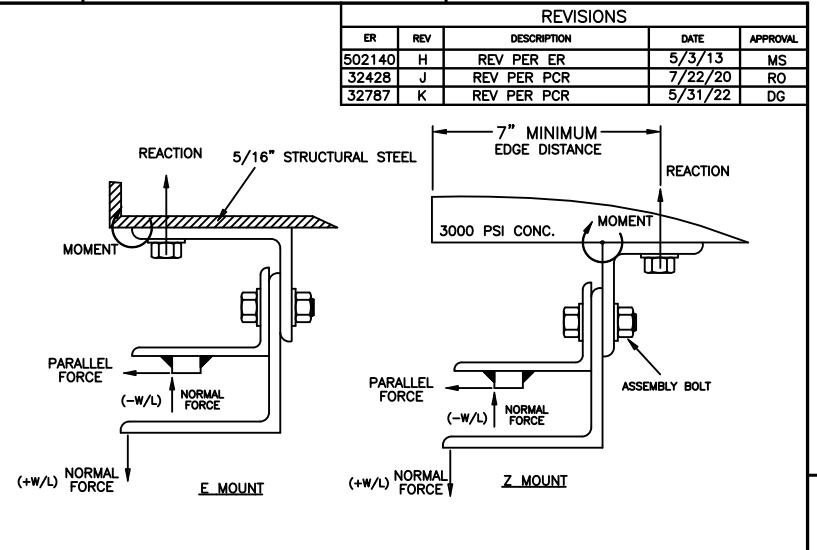
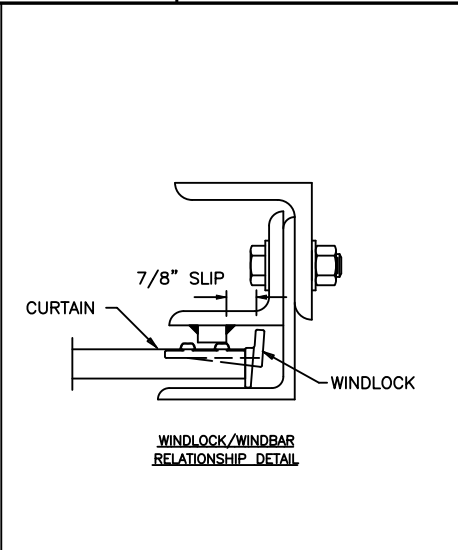
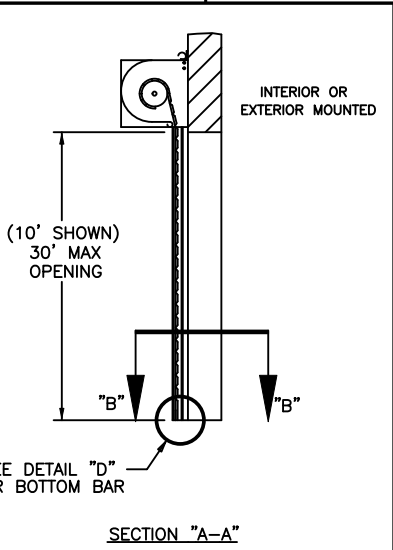
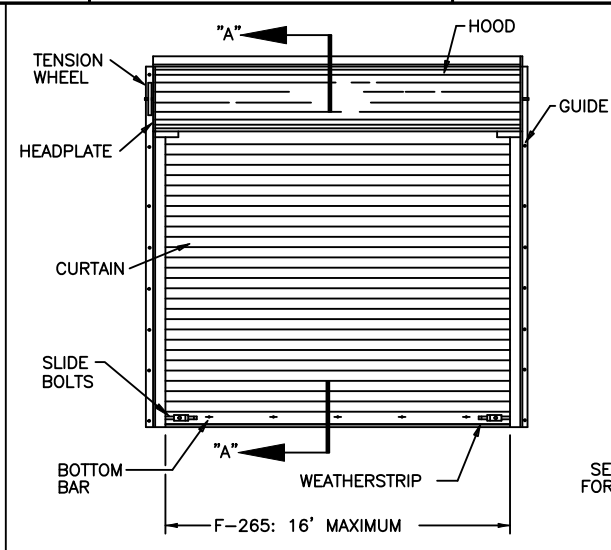


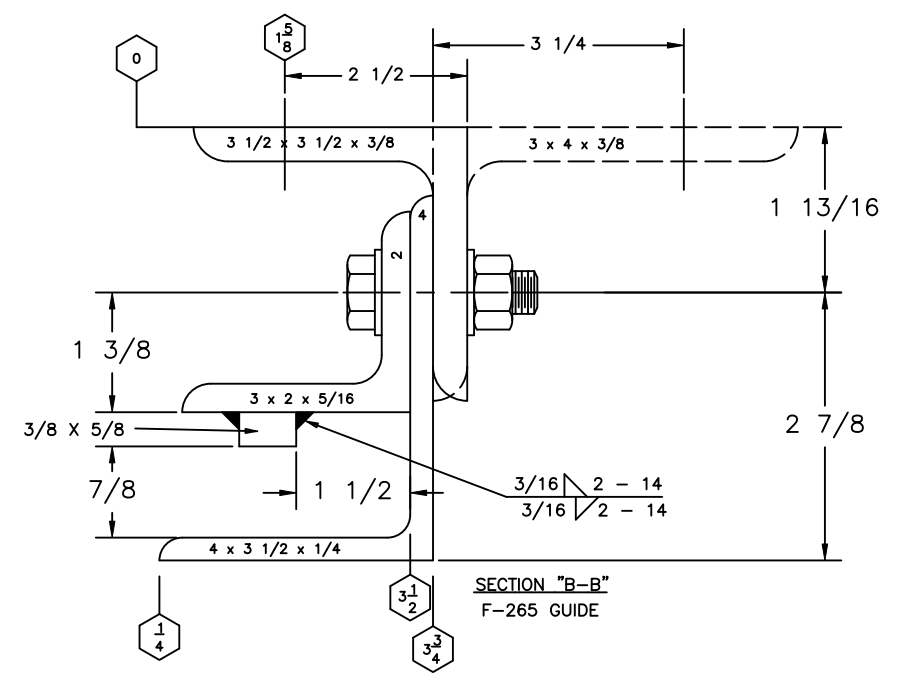
- NOTES
- (-W/L) = NEGATIVE WINDLOAD
(+W/L) = POSITIVE WINDLOAD
 - WALL ANGLES MAY BE WELDED TO STEEL JAMB.
SEE SHEET 2 FOR WELD DETAIL
 - RATED DESIGN LOAD ±65 PSF. LARGE MISSILE IMPACT TESTED AT 80 FT/SECOND IMPACT SPEED.
 - CURTAIN MATERIAL: ASTM A-653 CS TYPE B.
GUIDE MATERIAL: ASTM A-36
 - ALTERNATE CURTAIN MATERIAL: AISI-304 SS.
MINIMUM YIELD 40,000 PSI.
 - CURTAIN MATERIAL SHALL BE GALVANIZED ACCORDING TO ASTM A-525 TO G40 MINIMUM.
 - THE DOOR MAY BE INTERIOR OR EXTERIOR FACING.
 - SLIDE BOLTS MUST BE ENGAGED AND CHAIN MUST BE HOOKED WHEN HURRICANE WINDS ARE ANNOUNCED
 - WINDLOCK MATERIAL: LOW CARBON CAST STEEL, GRADE 70-46 (485-250) PER ASTM A27. MIN TENSILE 70-KSI MIN YIELD 36-KSI. MIN ELONG 22%
 - WINDLOCKS ATTACHED TO EACH SLAT (CONTINUOUS)
 - RIVET SPECIFICATIONS:
1/4" DIAMETER RIVET, MINIMUM 1006 LOW-CARBON STEEL.
 - COMPLIES WITH IBC/IRC 2018.

REVISIONS					
ER	REV	DESCRIPTION	DATE	APPROVAL	
502140	H	REV PER ER	5/3/13	MS	
32428	J	REV PER PCR	7/22/20	RO	
32787	K	REV PER PCR	5/31/22	DG	



F-265 - DOOR SIZE REF. SUMMARY

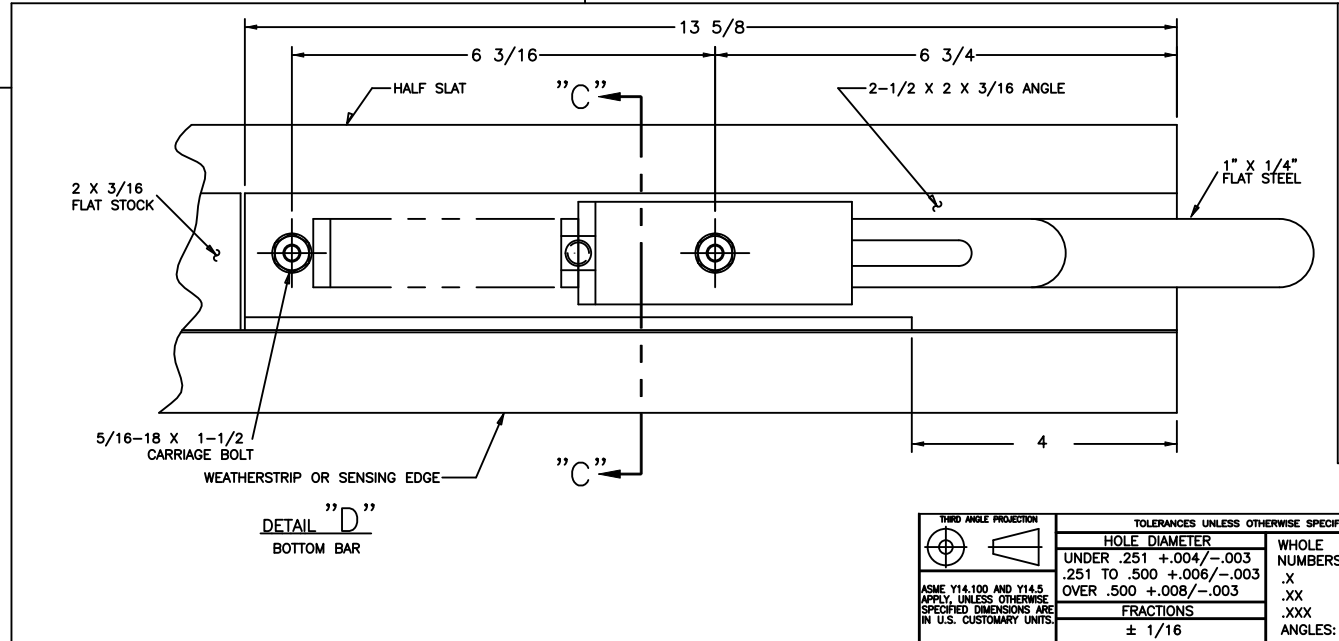
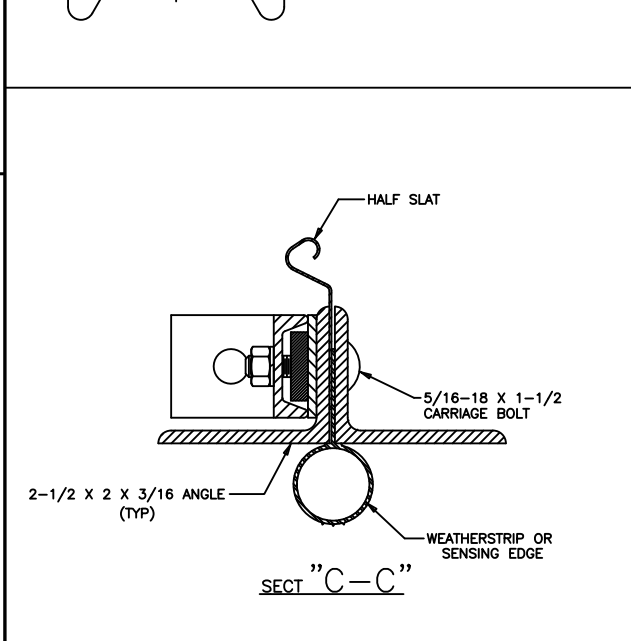
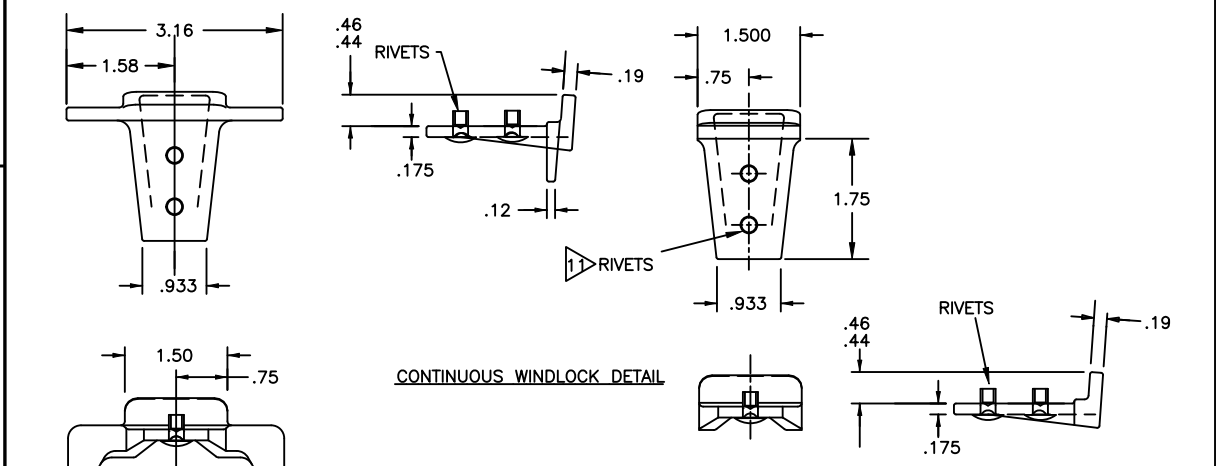
PER FT DOOR HEIGHT	(E-MOUNT) LOADS			(Z-MOUNT) LOADS *		
	22 GA **	20 GA	18 GA	22 GA **	20 GA	18 GA
REACTION (LBS)	6818	6632	6309	2538	2481	2381
NORMAL (LBS)	520	520	520	520	520	520
PARALLEL (LBS)	1969	1916	1826	1969	1916	1826
MOMENT (INLBS)	8443	8257	7934	8248	8062	7739



	ASSEMBLY BOLT	WALL BOLT STEEL JAMB	WALL BOLT *CONCRETE JAMB
F-265	1/2" GR 5, 11" O.C.	1/2" GR 5, 11" O.C.	1/2", 4" EFF. EMBED HILTI KBTZ2 OR EQUIVALENT 6" O.C.

* 3000 PSI MINIMUM AND 7" EDGE DISTANCE FOR ANCHORS
MINIMUM 9" CONCRETE THICKNESS

NOTE: FOR DETAILS ON WELDING GUIDES TO STEEL JAMBS SEE SHEET 2.



F-265 SLAT

GAUGE OPTIONS: 22**, 20, 18

**TESTED IN ACCORDANCE WITH DADE COUNTY PROTOCOLS TAS 201-94, TAS 202-94, AND TAS 203-94

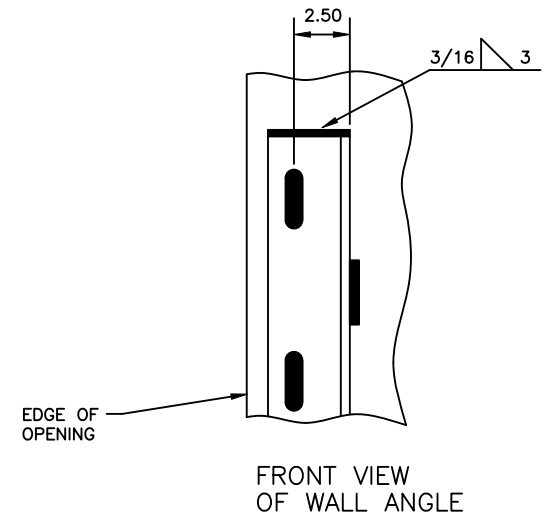
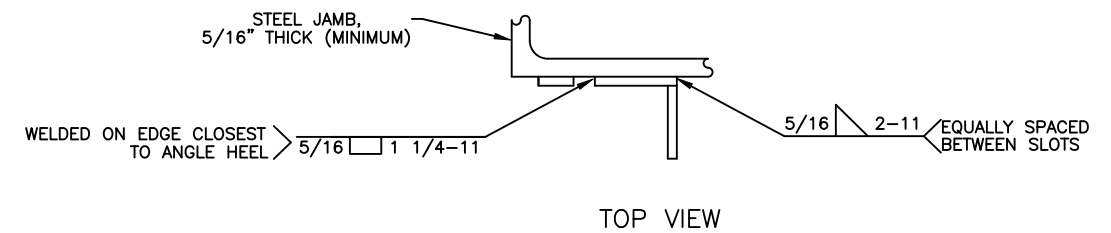
SERIES 611/621 ARE EQUIVALENT CONSTRUCTION

JOHN E. SCATES, PE
2560 KING ARTHUR BLVD, STE 124-54
LEWISVILLE, TX 75056
FL PE 51737 / TX PE 56308/F-2203

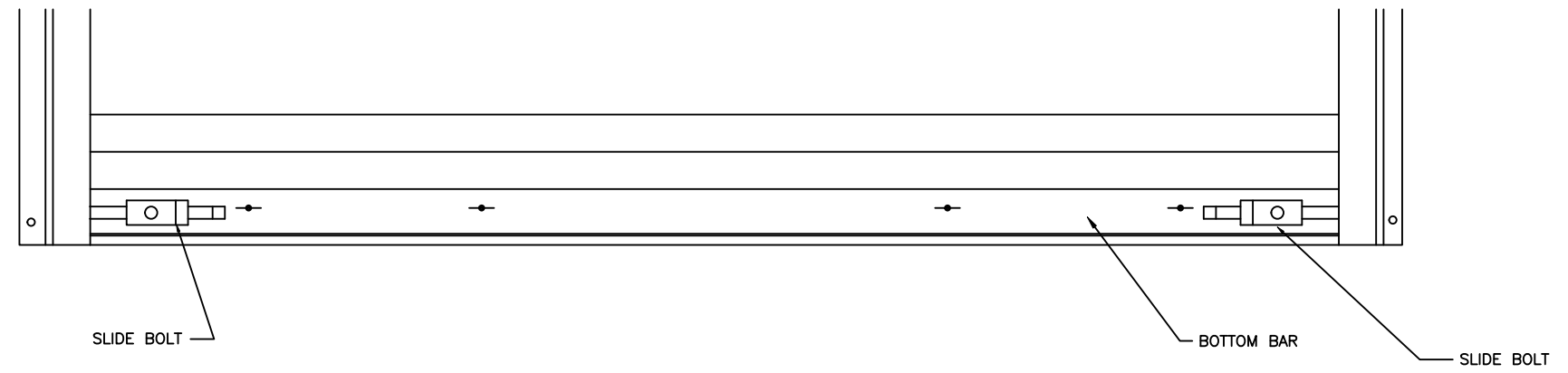
TOLERANCES UNLESS OTHERWISE SPECIFIED		FINISH		NAME		DATE		DRAWING TITLE	
HOLE DIAMETER		5		K WILSON		8/8/03		SERIES 610/620, ROLLING SERVICE DOOR 16' DADE COUNTY	
UNDER .251 +.004/-0.003		UNIT OF MEASURE		JD FAW		9/5/03		DRAWING NUMBER	
.251 TO .500 +.006/-0.003		N/A		L KRUPKE		9/5/03		D-308125	
OVER .500 +.008/-0.003								SCALE: NONE SHEET 1 OF 2	
FRACTIONS ± 1/16									
WHOLE NUMBERS: ± .25									
.X ± .1									
.XX ± .03									
.XXX ± .010									
ANGLES: ± .5°									

8 | 7 | 6 | 5 | 4 | 3 | 2 | 1

NOTES



DETAILS FOR WELDING "E" GUIDES TO STEEL JAMBS



DETAIL "E"
SCALE: 4/1

JOHN E. SCATES, PE
2560 KING ARTHUR BLVD, STE 124-54
LEWISVILLE, TX 75056
FL PE 51737 / TX PE 56308/F-2203

<p>THIRD ANGLE PROJECTION ASME Y14.100 AND Y14.5 APPLY, UNLESS OTHERWISE SPECIFIED DIMENSIONS ARE IN U.S. CUSTOMARY UNITS.</p>	TOLERANCES UNLESS OTHERWISE SPECIFIED		FINISH N/A	<p>The Genuine. The Original. LEWISVILLE, TEXAS</p>	NAME M WOMACK	DATE 10/10/03	DRAWING TITLE SERIES 610/620, ROLLING SERVICE DOOR 16' DADE COUNTY
	HOLE DIAMETER				UNIT OF MEASURE N/A	CHECKED BY: JD FAW	
	UNDER .251 +.004/- .003	WHOLE NUMBERS: ± .25	MATERIAL: N/A	APPROVED BY: L KRUPKE	10/10/03	SCALE: NOTED SHEET 2 OF 2	
	.251 TO .500 +.006/- .003	.X ± .1					
OVER .500 +.008/- .003	.XX ± .03 .XXX ± .010 ANGLES: ± .5°						

8 | 7 | 6 | 5 | 4 | 3 | 2 | 1