

STRUTTING SCHEDULE:

1	per Bottom Section—Centered
1	per Top Section—Centered
1	per Every Other Intermediate Section—Centered

NOTE: UNLESS SPECIFIED OTHERWISE, ALL FASTENERS ARE 1/4"–14 X 3/4" HEX HEAD SHEET METAL SCREWS OR 1/4" X 3/4" HEX HEAD SELF DRILLING SCREWS.

FOR WOOD MOUNTING  
 Wood species: Spruce–Pine–Fir (S.G. 0.44) or better  
 Wood quality: Free of knots/splits at fastener locations.  
 Fastener: 5/16 Lag Screws x 1 5/8 long or as needed for 1.5" penetration min.  
 Fasteners edge distance 0.5" minimum.  
 Pre-drill pilot holes to prevent splitting.

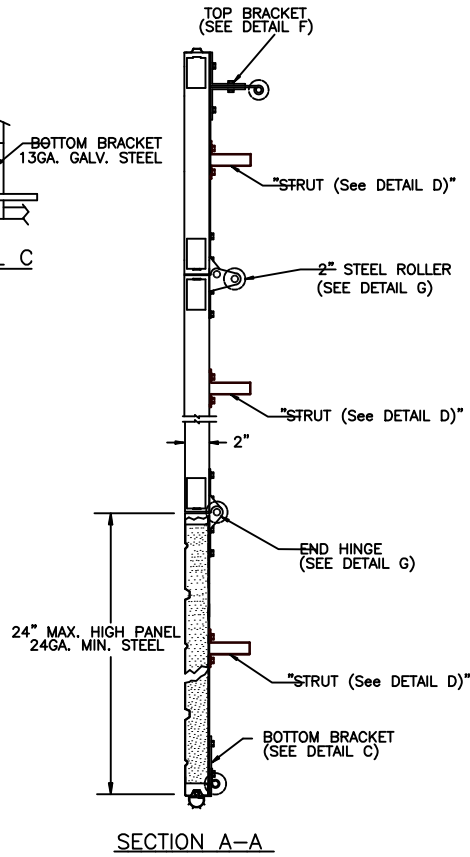
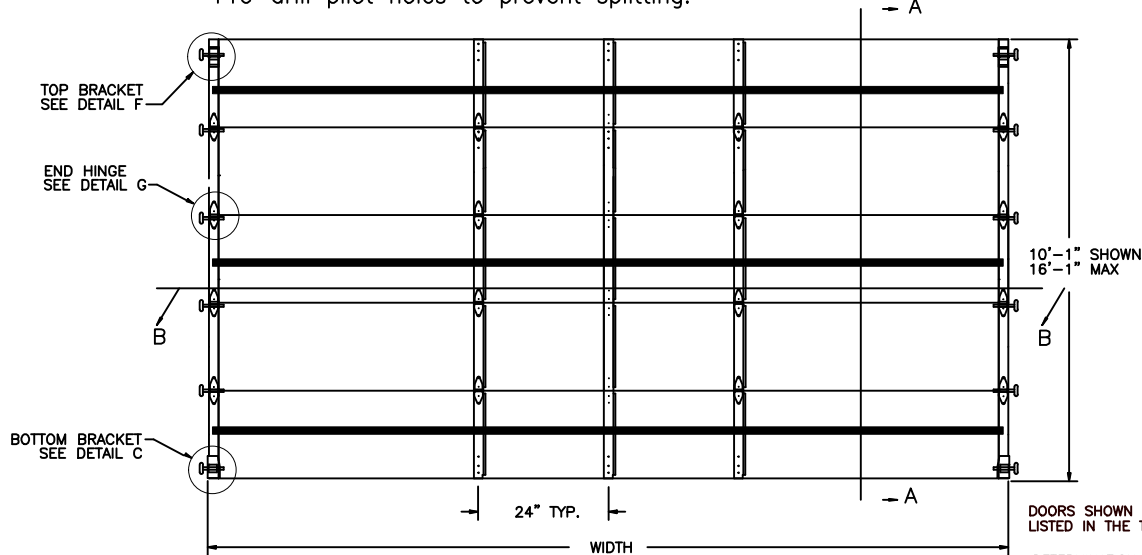
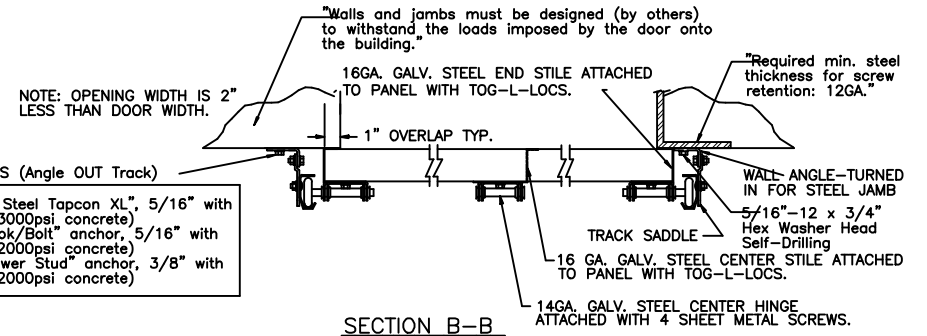


CHART E

Door Ht.	No. of Track Saddles	TRACK SADDLE LOCATIONS
8'-0"	4	5", 29", 53", 75"
9'-0"	4	5", 29", 53", 75"
10'-0"	5	5", 29", 53", 75", 101"
12'-0"	6	5", 29", 53", 75", 101", 125"
14'-0"	7	5", 29", 53", 75", 101", 125", 149"
16'-0"	8	5", 29", 53", 75", 101", 125", 149", 173"

NOTE: Anchor bolts are located 3/4" above centerline of track saddle. One anchor bolt per track saddle.

FOR CONCRETE WALLS (Angle OUT Track)  
 ITW Buildex "Carbon Steel Tapcon XL", 5/16" with 1.75" embed min. (3000psi concrete)  
 Powers Fasteners "Lok/Bolt" anchor, 5/16" with 1.75" embed min. (2000psi concrete)  
 Powers Fasteners "Power Stud" anchor, 3/8" with 1.63" embed min. (2000psi concrete)



DOORS SHOWN ON THIS DRAWING HAVE BEEN DEMONSTRATED TO WITHSTAND THE PRESSURES LISTED IN THE TABLE ABOVE VIA TESTING TO ANSI/DASMA 108-05/12/17.  
 DETERMINATION OF SUITABILITY FOR SPECIFIC SITES IS THE RESPONSIBILITY OF OTHERS.

COMPLIES WITH THE WINDLOAD REQUIREMENTS OF THE IBC/IRC 2018.

P.S.F. TABLE

DOOR SIZE WIDTH HEIGHT	NO. OF CEN. STILES	STILE SPACING	DESIGN PRESSURE	
			POSITIVE	NEGATIVE
8'-2" 16'-1"	2	24"	+25.5	-28.5
9'-2" 16'-1"	3		+25.5	-28.5
10'-2" 16'-1"	3		+20.7	-23.1

PRESSURES TABULATED ARE BASED ON TESTS OF MODEL 240 (24ga. Panel)  
 MODEL 200 (20ga. Panel) WILL WITHSTAND EQUAL OR HIGHER PRESSURES

John E. Scates PE  
 2580 King Arthur Blvd #124-54  
 Lewisville, TX 75056  
 TX-PE 56308, F-2203  
 FL-PE-51737

Professional Engineer's seal provided only for verification of windload construction details.

REV.	DATE	CHANGE
B	6/03/20	ROLLER NOTES, PE ADDRESS
A	12/15/11	NEW LOGO/ENG. STAMP

**W WINDSOR DOOR**  
 5800 SCOTT HAMILTON DR. LITTLE ROCK, AR 72209 (501) 562-1872

MODELS: MODEL 240(24GA.)/200(20GA.) ALTERNATING STRUTS

PART NAME: 10'-2" x 16'-1"			
DESIGN LOAD +20.7 -23.1			
TOLERANCE	FRAC. ± 1/64" DEC. ± .015 ANG. ± 1'		
NEXT LEVEL	DATE: 12-02-09	DWG. NO. 99-B-094	
SCALE: NONE	PLOT SCALE	DRN. BY: BNB	SHT 1 OF 1

FL 15062