

NOTES:

1. STANDARD GLAZING OPTION - .125" MINIMUM DSB GLAZING MEETS UNIFORM STATIC DESIGN PRESSURES SHOWN ON THIS DRAWING. GLAZING SHALL HAVE A MAXIMUM HEIGHT OF 6.70" AND A MAXIMUM LENGTH OF 24.00". GLAZING IS NOT IMPACT RESISTANT AND DOES NOT MEET THE REQUIREMENTS FOR WIND-BORNE DEBRIS REGIONS.

2. MINIMUM OF 1" OVERLAP ON BOTH JAMBS REQUIRED TO MEET NEGATIVE DESIGN PRESSURES.

3. SLIDE LOCKS OR OPERATOR REQUIRED.

4. SECTION STEEL TO HAVE THE FOLLOWING MINIMUM THICKNESS:
C20 - 20 GA
C24 - 24 GA
C2400 - 25 GA

5. THE DESIGN OF THE SUPPORTING STRUCTURAL ELEMENTS SHALL BE THE RESPONSIBILITY OF THE PROFESSIONAL OF RECORD FOR THE BUILDING OR STRUCTURE AND IN ACCORDANCE WITH CURRENT BUILDING CODES FOR THE LOADS LISTED ON THIS DRAWING.

6. TRACK CLIPS SHALL BE LOCATED WITH CENTERLINE OF BOTTOM CLIP SPACED 10" MAX FROM BOTTOM OF TRACK AND REMAINING TRACK CLIPS SPACED AT 24" O.C. MAX. SPACING BETWEEN TOP TRACK CLIP AND SPLICE PLATE SHALL BE 30" O.C. MAX.

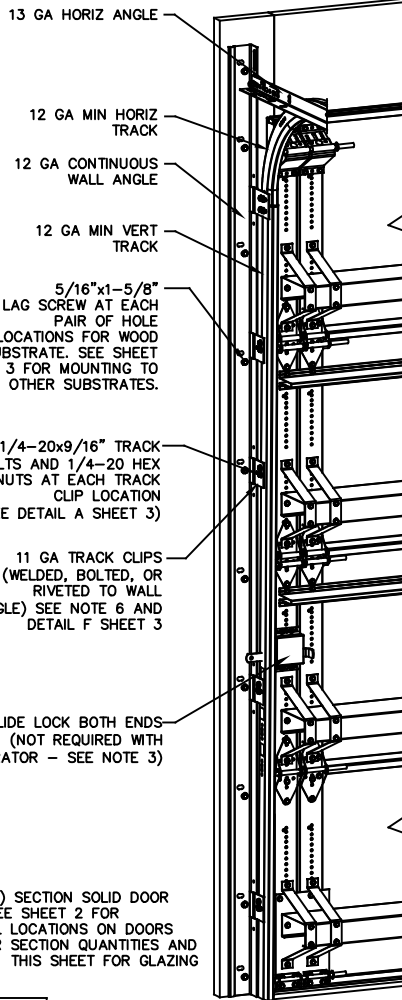
7. WHEN MOUNTING TO WOOD, DOOR JAMB TO BE MINIMUM 2x6 STRUCTURAL GRADE LUMBER. REFER TO JAMB CONNECTION SUPPLEMENT FOR ATTACHMENT TO SUPPORTING STRUCTURE.

(2) 1/4-20x9/16" TRACK BOLTS AND 1/4-20 HEX NUTS AT EACH TRACK CLIP LOCATION (SEE DETAIL A SHEET 3)

11 GA TRACK CLIPS (WELDED, BOLTED, OR RIVETED TO WALL ANGLE) SEE NOTE 6 AND DETAIL F SHEET 3

SLIDE LOCK BOTH ENDS (NOT REQUIRED WITH OPERATOR - SEE NOTE 3)

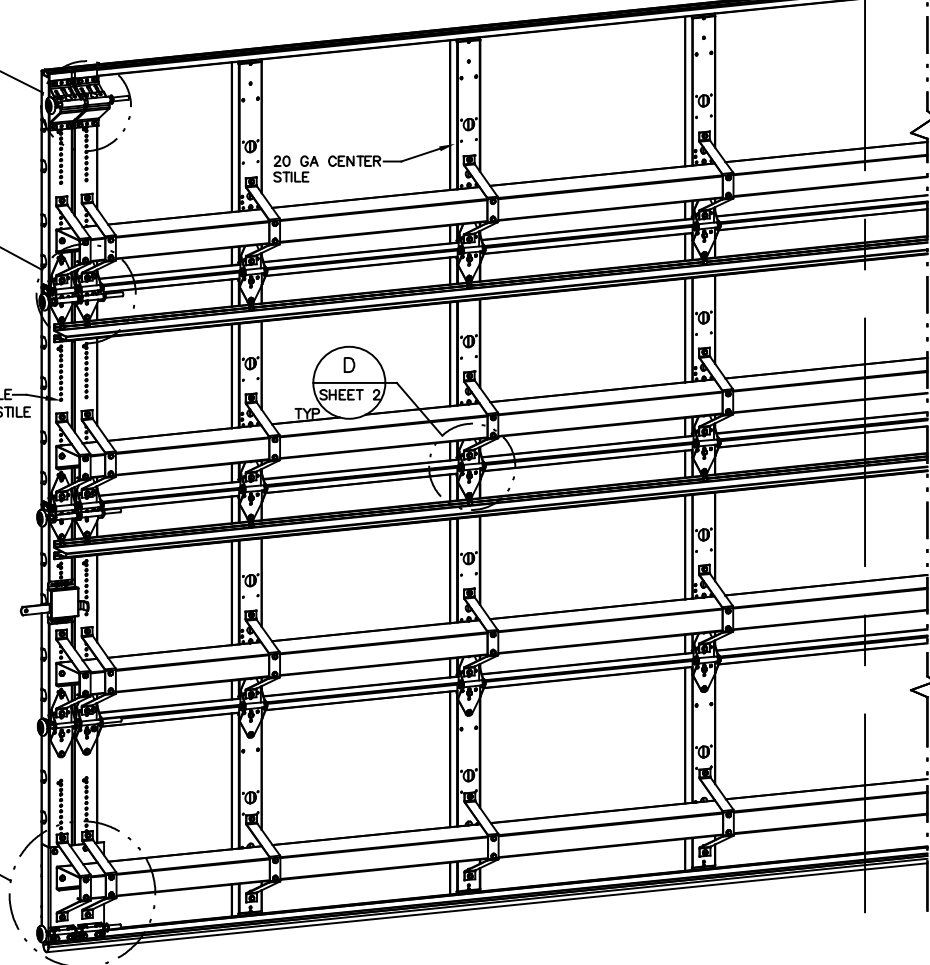
NOTE: (4) SECTION SOLID DOOR SHOWN. SEE SHEET 2 FOR C-CHANNEL LOCATIONS ON DOORS WITH OTHER SECTION QUANTITIES AND SEE NOTE 1 THIS SHEET FOR GLAZING OPTION.



B
SHEET 2

C
SHEET 2

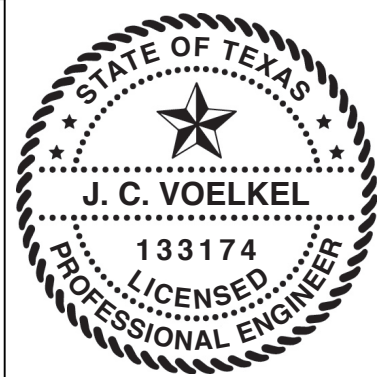
E
SHEET 2



- REVISIONS**
- P1 MODIFIED MOUNTING TO STEEL DETAIL. ADDED DETAIL F ON SHEET 2 FOR TRACK CLIPS. GRT 4/20/08
 - P2 DECREASED WALL ANGLE THICKNESS. UPDATED TITLE BLOCK GRT 3/22/12
 - P3 UPDATED TITLE BLOCK ESC 10/13/17
 - REV D - DRAWING UPDATES. TLC 10/16/20
 - REV E - DRAWING UPDATES. TLC 5/25/21

SUPERIMPOSED DESIGN PRESSURE LOADS ON SUPPORTING STRUCTURE

MAX DOOR WIDTH	DOOR HEIGHT	MAX UNIFORM LOAD EACH JAMB (PLF)
24'-2"	ALL	+244.1/-274.3

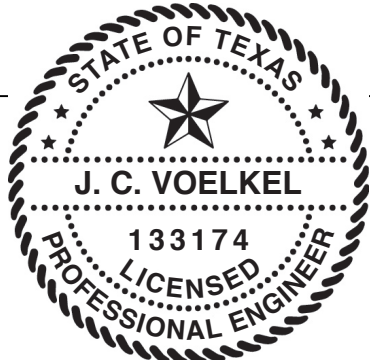
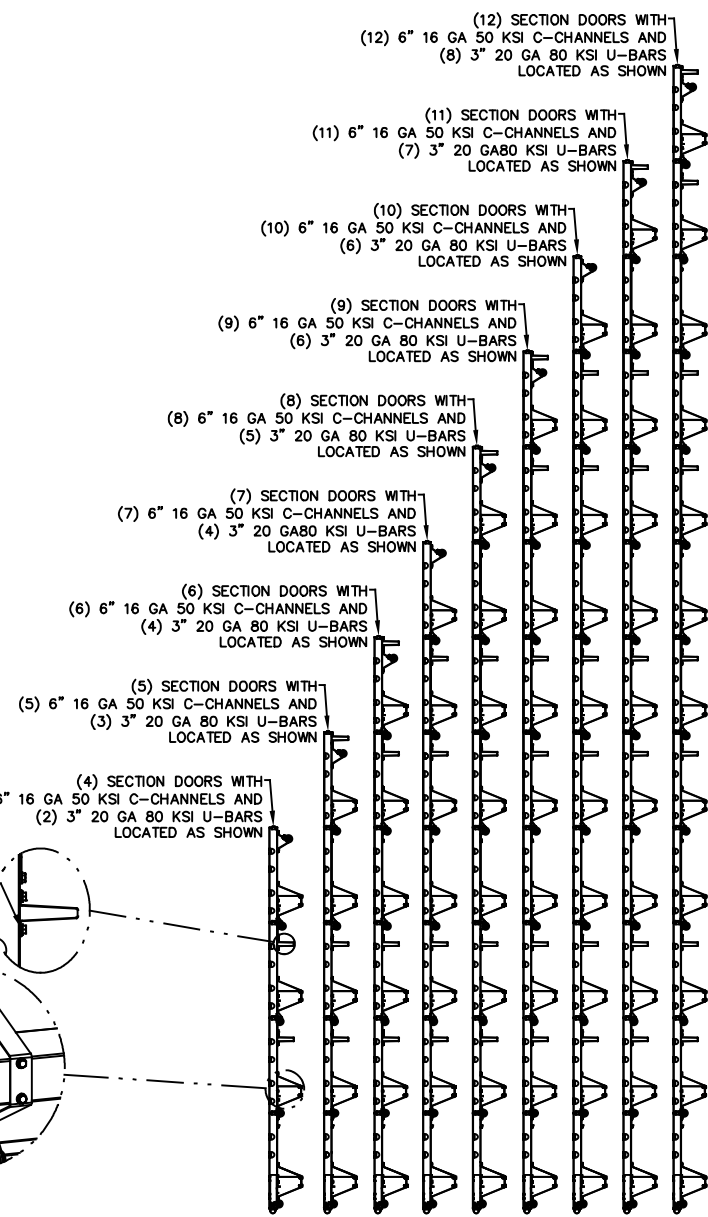
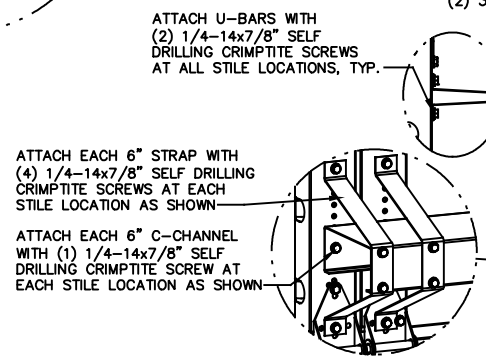
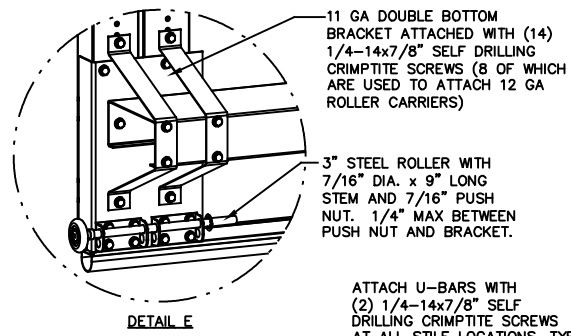
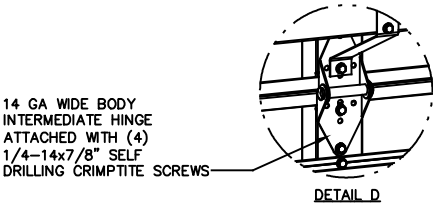
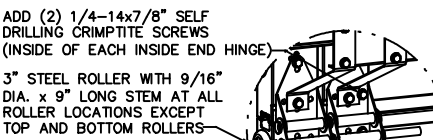
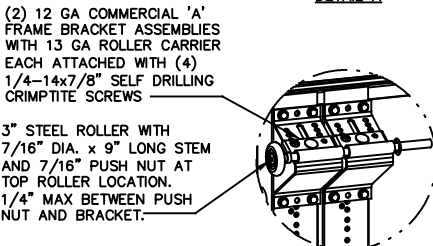
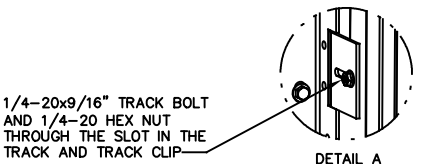


J. CHRISTIAN VOELKEL, PE
312 N. NEW WARRINGTON ROAD, UNIT 1A
PENSACOLA, FL
FL PE 82229
TX PE 133174
PROFESSIONAL ENGINEER'S SEAL PROVIDED ONLY FOR VERIFICATION OF WINDLOAD CONSTRUCTION DETAILS.

THE DOORS ARE DESIGNED AND MANUFACTURED TO COMPLY WITH THE 2018 IRC AND THE 2018 IBC.

A DIVISION OF OVERHEAD DOOR CORP
3395 ADDISON DRIVE
PENSACOLA, FLORIDA 32514
(850) 474-9890

STATIC PRESSURE RATINGS		APPROVED SIZES		SCALE: N.T.S.	SIZE: A
DESIGN (PSF):	+20.20/-22.70	MAX WIDTH:	24'-2"	DATE	NAME
TEST (PSF):	+30.30/-34.05	MAX HEIGHT:	24'-1"	DRAWN	GRT
IMPACT/CYCLIC RATED (YES/NO):	NO	MAX SECTION HEIGHT: 24"	CHECKED	5/21/21	TLC
MODELS C20/C24/C2400				SHEET 1 OF 3	
WINDLOAD SPECIFICATION OPTION CODE 2050				DRAWING PART NO.	REV.
				332588	E



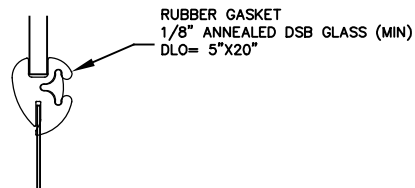
J. CHRISTIAN VOELKEL, PE
 312 N. NEW WARRINGTON ROAD, UNIT 1A
 PENSACOLA, FL
 FL PE 82229
 TX PE 133174

PROFESSIONAL ENGINEER'S SEAL PROVIDED ONLY FOR VERIFICATION OF WINDLOAD CONSTRUCTION DETAILS.

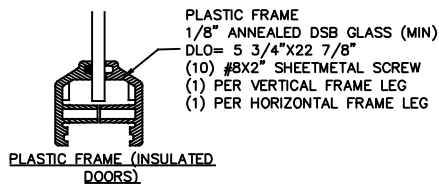
Wayne Dalton
 GARAGE DOORS

A DIVISION OF OVERHEAD DOOR CORP.
 3395 ADDISON DRIVE
 PENSACOLA, FLORIDA 32514
 (850) 474-9890

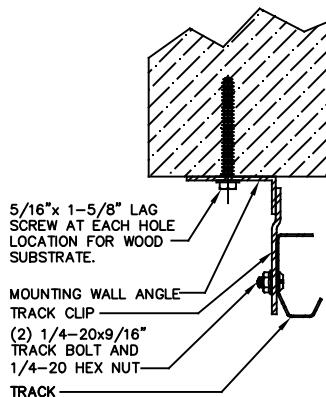
STATIC PRESSURE RATINGS		APPROVED SIZES		SCALE: N.T.S.	SIZE: A
DESIGN (PSF):	+20.20/-22.70	MAX WIDTH:	24'-2"	DATE	NAME
TEST (PSF):	+30.30/-34.05	MAX HEIGHT:	24'-1"	DRAWN	5/22/07
IMPACT/CYCLIC RATED (YES/NO): NO		MAX SECTION HEIGHT: 24"	CHECKED	5/25/21	TLC
MODELS C20/C24/C2400				SHEET 2 OF 3	
WINDLOAD SPECIFICATION OPTION CODE 2050				DRAWING PART NO.	REV.
				332588	E



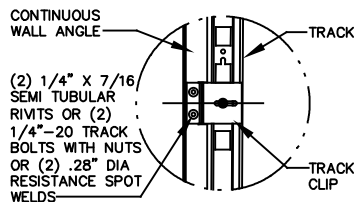
RUBBER FRAME GASKET
(NON-INSULATED DOORS)



PLASTIC FRAME (INSULATED DOORS)

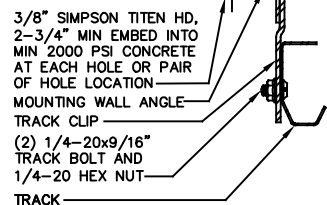
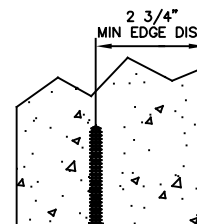


WOOD MOUNTING DETAIL - ANGLE OUT

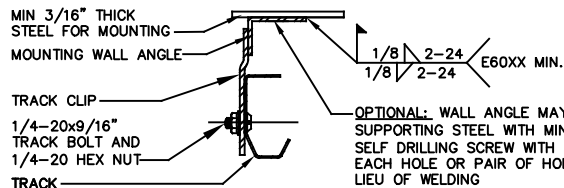


DETAIL F

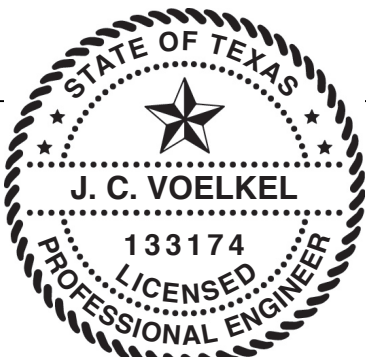
EXTERIOR FRAME



CONCRETE MOUNTING DETAIL - ANGLE OUT



MOUNTING TO STEEL DETAIL



J. CHRISTIAN VOELKEL, PE
312 N. NEW WARRINGTON ROAD, UNIT 1A
PENSACOLA, FL
FL PE 82229
TX PE 133174

PROFESSIONAL ENGINEER'S SEAL PROVIDED ONLY FOR VERIFICATION OF WINDLOAD CONSTRUCTION DETAILS.

<p>Wayne Dalton GARAGE DOORS</p> <p>A DIVISION OF OVERHEAD DOOR CORP. 3395 ADDISON DRIVE PENSACOLA, FLORIDA 32514 (850) 474-9890</p>	STATIC PRESSURE RATINGS		APPROVED SIZES	SCALE: N.T.S.	SIZE: A	
	DESIGN (PSF):	+20.20/-22.70	MAX WIDTH:	24'-2"	DATE	NAME
	TEST (PSF):	+30.30/-34.05	MAX HEIGHT:	24'-1"	DRAWN	GRT
	IMPACT/CYCLIC RATED (YES/NO):	NO	MAX SECTION HEIGHT:	24'	CHECKED	TLC
MODELS C20/C24/C2400				SHEET 3 OF 3		
WINDLOAD SPECIFICATION OPTION CODE 2050				DRAWING PART NO.	REV.	
				332588	E	