

**NOTES:**

1. NON-IMPACT RESISTANT OPTION - .125" MINIMUM DSB GLAZING MEETS UNIFORM STATIC DESIGN PRESSURES SHOWN ON THIS DRAWING. GLAZING SHALL HAVE A MAXIMUM HEIGHT OF 6.70" AND A MAXIMUM LENGTH OF 24.00". GLAZING IS NOT IMPACT RESISTANT AND DOES NOT MEET THE REQUIREMENTS FOR WIND-BORNE DEBRIS REGIONS.

2. IMPACT RESISTANT GLAZING OPTION - IMPACT RESISTANT GLAZING SYSTEM MAY BE INSTALLED IN INTERMEDIATE SECTIONS (WITH OR WITHOUT DECORATIVE INSERTS). GLAZING SHALL BE 1/4" POLYCARBONATE. MAXIMUM GLAZING DIMENSIONS SHALL BE 11" x 17", FASTENED WITH A MINIMUM #8 X 1" SMS; 3X ALONG THE HORIZONTAL AND 2X ALONG THE VERTICAL.

3. ALUMINUM FULL VIEW OPTION - ALUMINUM FULL VIEW SECTION MAY REPLACE ANY SECTION EXCEPT TOP AND BOTTOM PANELS. ALUMINUM FULL VIEW SECTION SHALL HAVE RAILS AND STILES OF EXTRUDED ALUMINUM ALLOY 6063-T6 AND .125" MINIMUM DSB GLAZING INSTALLED WITH ALUMINUM RETAINERS IN ORDER TO MEET UNIFORM STATIC DESIGN PRESSURES SHOWN ON THIS DRAWING. AFV PANEL SIZE IS 47.5"x21.9" (MAX). GLAZING IS NOT IMPACT RESISTANT AND DOES NOT MEET THE REQUIREMENTS FOR WIND-BORNE DEBRIS REGIONS.

4. MINIMUM OF 1" OVERLAP ON BOTH JAMBS REQUIRED TO MEET NEGATIVE DESIGN PRESSURES.

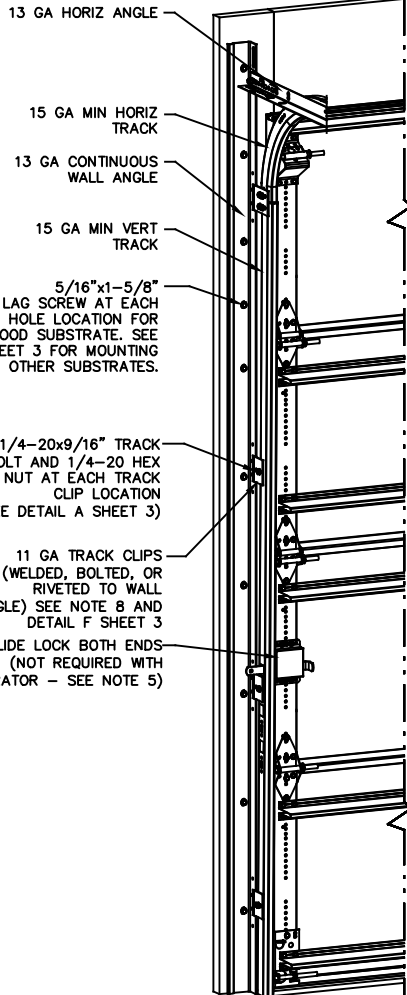
5. SLIDE LOCK OR OPERATOR REQUIRED.

6. SECTION STEEL TO HAVE THE FOLLOWING MINIMUM THICKNESS:  
 C20 - 20 GA  
 C24 - 24 GA  
 C2400 - 25 GA

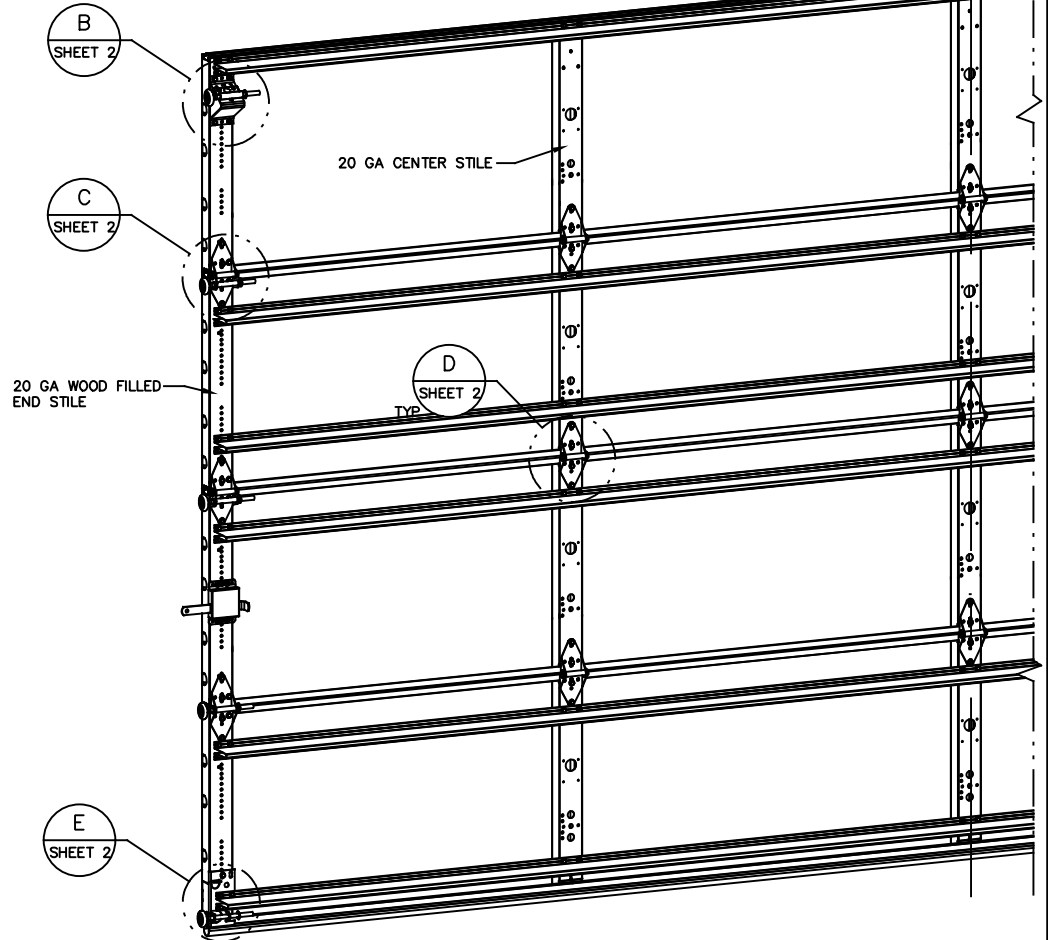
7. THE DESIGN OF THE SUPPORTING STRUCTURAL ELEMENTS SHALL BE THE RESPONSIBILITY OF THE PROFESSIONAL OF RECORD FOR THE BUILDING OR STRUCTURE AND IN ACCORDANCE WITH CURRENT BUILDING CODES FOR THE LOADS LISTED ON THIS DRAWING.

8. TRACK CLIPS SHALL BE LOCATED WITH CENTERLINE OF BOTTOM CLIP SPACED 10" MAX FROM BOTTOM OF TRACK AND REMAINING TRACK CLIPS SPACED AT 24" O.C. MAX. SPACING BETWEEN TOP TRACK CLIP AND SPLICE PLATE SHALL BE 30" O.C. MAX.

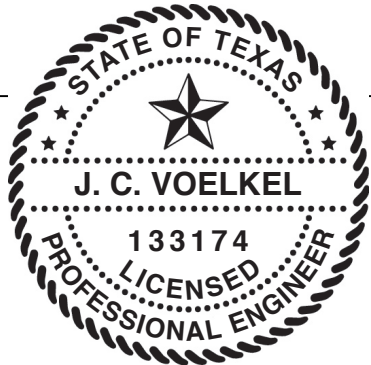
9. WHEN MOUNTING TO WOOD, DOOR JAMB TO BE MINIMUM 2x6 STRUCTURAL GRADE LUMBER. REFER TO JAMB CONNECTION SUPPLEMENT FOR ATTACHMENT TO SUPPORTING STRUCTURE.



NOTE: (4) SECTION SOLID DOOR SHOWN. SEE SHEET 2 FOR U-BAR LOCATIONS ON DOORS WITH OTHER SECTION QUANTITIES AND SEE NOTES 1, 2, & 3 OF THIS SHEET FOR GLAZING OPTIONS.



**REVISIONS**  
 REV - INITIAL DRAWING  
 TLC 10/27/2020  
 REV A - ADDED SIZE OF AFV PANEL  
 TLC 4/28/21



**SUPERIMPOSED DESIGN PRESSURE LOADS ON SUPPORTING STRUCTURE**

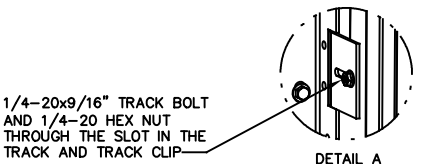
MAX DOOR WIDTH	DOOR HEIGHT	MAX UNIFORM LOAD EACH JAMB (PLF)
16'-2"	ALL	+255.4/-286.1

THE DOORS ARE DESIGNED AND MANUFACTURED TO COMPLY WITH THE 2018 IRC AND THE 2018 IBC.

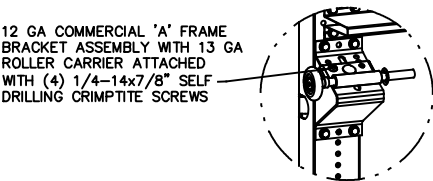
**Wayne Dalton**  
 GARAGE DOORS  
 A DIVISION OF OVERHEAD DOOR CORP.  
 3395 ADDISON DRIVE  
 PENSACOLA, FLORIDA 32514  
 (850) 474-9890

STATIC PRESSURE RATINGS		APPROVED SIZES	SCALE: N.T.S.	SIZE: A
DESIGN (PSF):	+31.60/-35.40	MAX WIDTH: 16'-2"	DATE	NAME
TEST (PSF):	+47.40/-53.10	MAX HEIGHT: 24'-1"	DRAWN 10/27/20	TLC
IMPACT/CYCLIC RATED (YES/NO):	YES	MAX SECTION HEIGHT: 24"	CHECKED 4/28/21	TLC
MODELS C20/C24/C2400			SHEET 1 OF 3	
WINDLOAD SPECIFICATION OPTION CODE 2046			DRAWING PART NO.	REV.
			365579	A

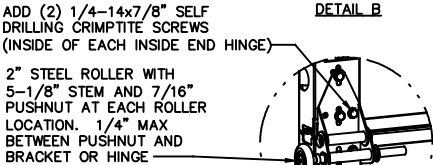
PROFESSIONAL ENGINEER'S SEAL PROVIDED ONLY FOR VERIFICATION OF WINDLOAD CONSTRUCTION DETAILS.



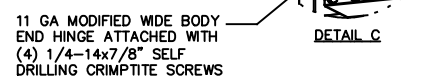
DETAIL A



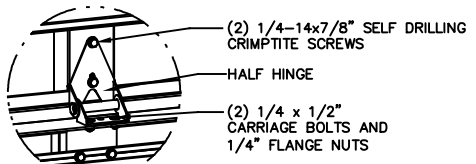
DETAIL B



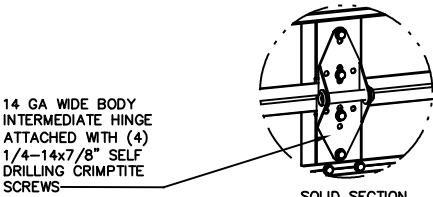
DETAIL C



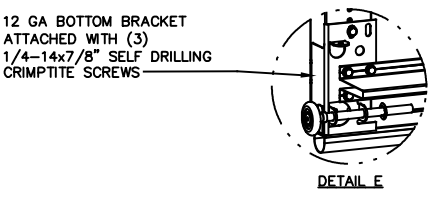
DETAIL D



DETAIL D

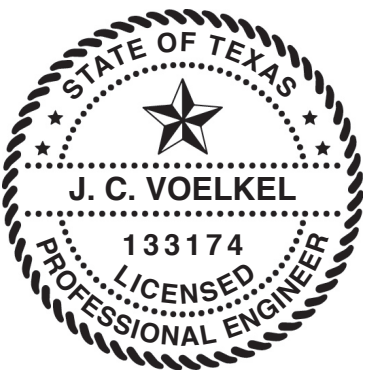
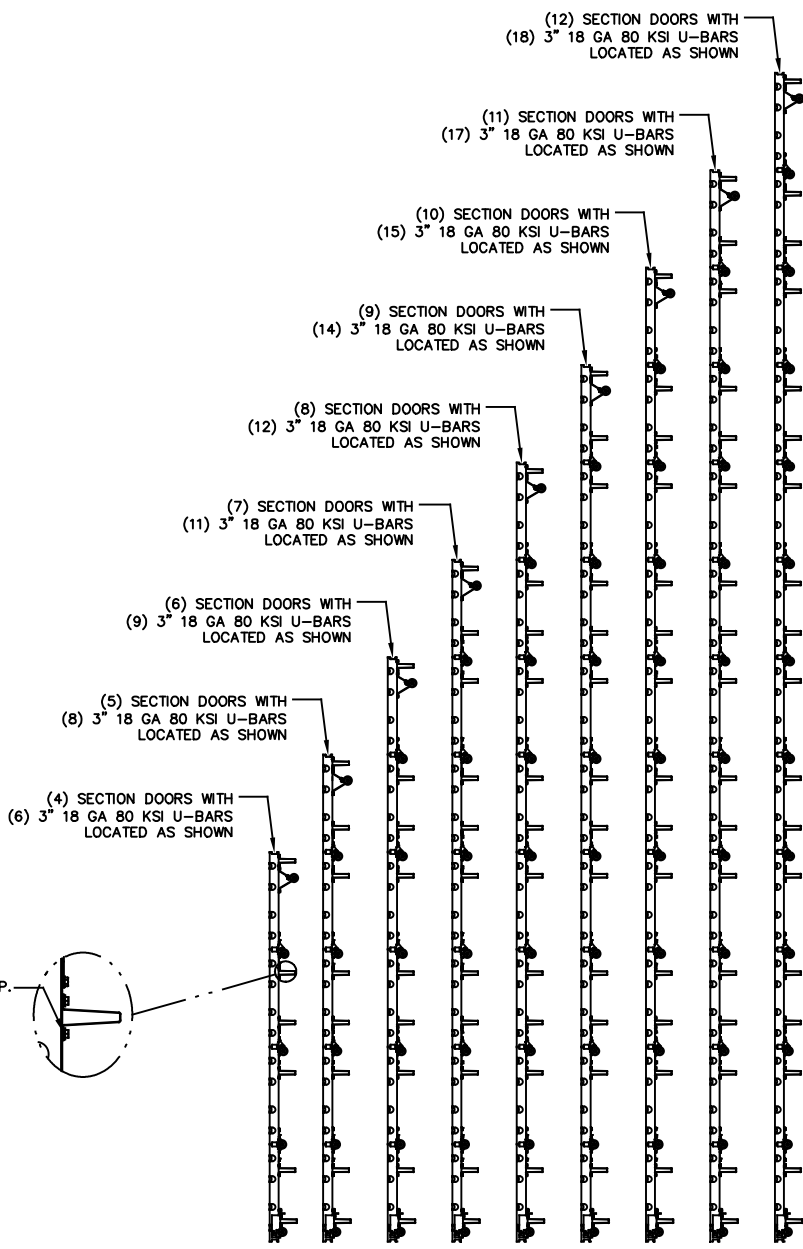


SOLID SECTION



DETAIL E

ATTACH U-BARS WITH (4) 1/4-14x7/8" SELF DRILLING CRIMPITITE SCREWS AT ALL STILE LOCATIONS, TYP.



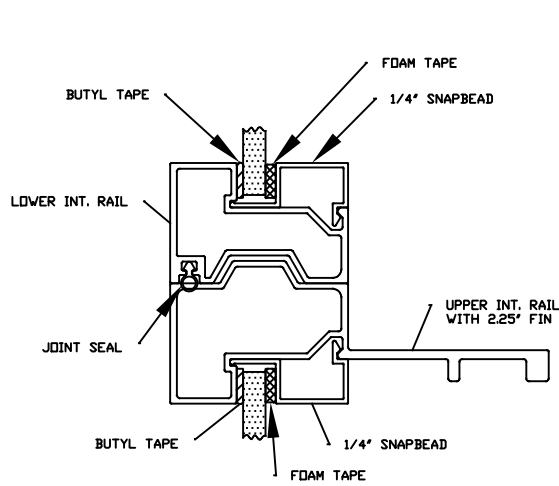
J. CHRISTIAN VOELKEL, PE  
312 N. NEW WARRINGTON ROAD, UNIT 1A  
PENSACOLA, FL  
FL PE 82229  
TX PE 133174

PROFESSIONAL ENGINEER'S SEAL PROVIDED ONLY FOR VERIFICATION OF WINDLOAD CONSTRUCTION DETAILS.

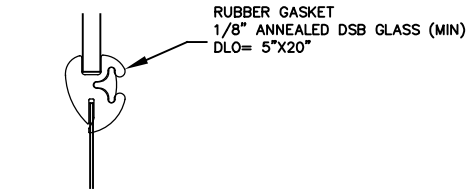
**Wayne Dalton**  
GARAGE DOORS

A DIVISION OF OVERHEAD DOOR CORP.  
3395 ADDISON DRIVE  
PENSACOLA, FLORIDA 32514  
(850) 474-9890

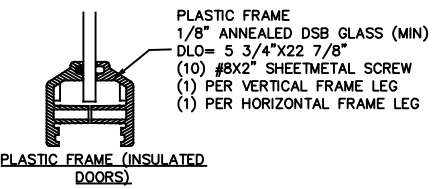
STATIC PRESSURE RATINGS		APPROVED SIZES		SCALE: N.T.S.	SIZE: A
DESIGN (PSF):	+31.60/-35.40	MAX WIDTH:	16'-2"	DATE	NAME
TEST (PSF):	+47.40/-53.10	MAX HEIGHT:	24'-1"	DRAWN	TLC
IMPACT/CYCLIC RATED (YES/NO):	YES	MAX SECTION HEIGHT:	24"	CHECKED	TLC
MODELS C20/C24/C2400				SHEET 2 OF 3	
WINDLOAD SPECIFICATION OPTION CODE 2046				DRAWING PART NO.	REV.
				365579	A



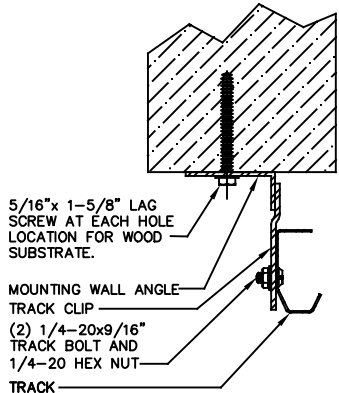
ALUMINUM FULL VIEW FRAME



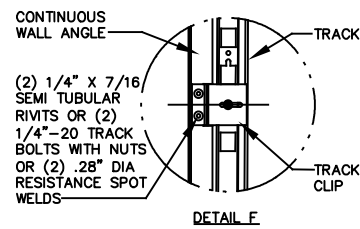
RUBBER FRAME GASKET (NON-INSULATED DOORS)



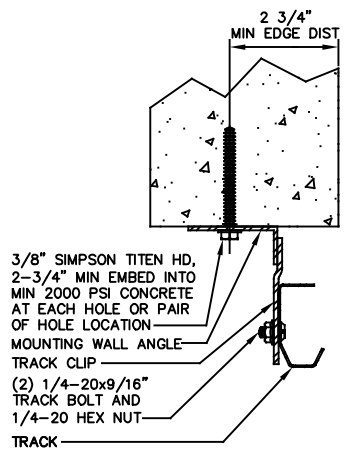
PLASTIC FRAME (INSULATED DOORS)



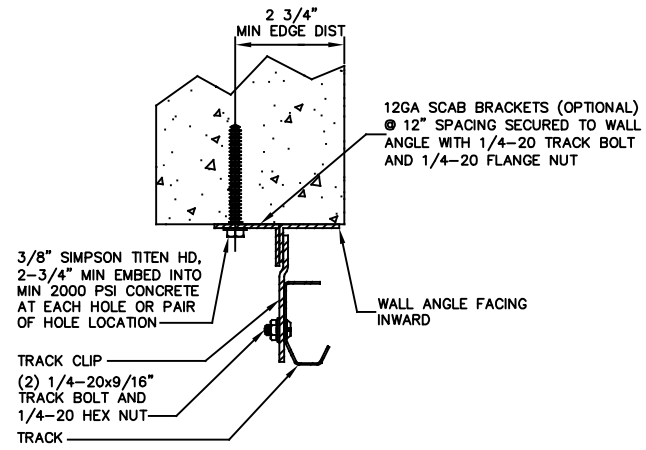
WOOD MOUNTING DETAIL - ANGLE OUT



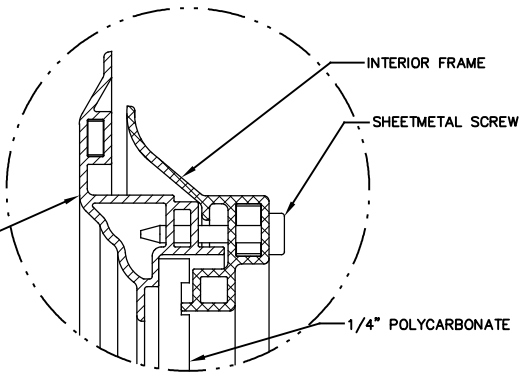
DETAIL F



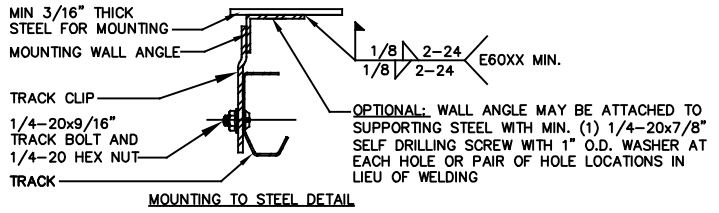
CONCRETE MOUNTING DETAIL - ANGLE OUT



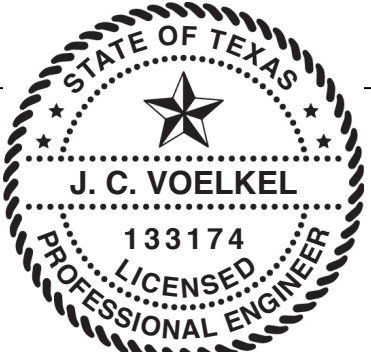
CONCRETE MOUNTING DETAIL - ANGLE IN



IMPACT WINDOW / ALUMINUM FRAME WITH GROOVED POLYCARBONATE



MOUNTING TO STEEL DETAIL



J. CHRISTIAN VOELKEL, PE  
 312 N. NEW WARRINGTON ROAD, UNIT 1A  
 PENSACOLA, FL  
 FL PE 82229  
 TX PE 133174  
 PROFESSIONAL ENGINEER'S SEAL PROVIDED ONLY FOR  
 VERIFICATION OF WINDLOAD CONSTRUCTION DETAILS.

**Wayne Dalton**  
 GARAGE DOORS  
 A DIVISION OF OVERHEAD DOOR CORP.  
 3395 ADDISON DRIVE  
 PENSACOLA, FLORIDA 32514  
 (850) 474-9890

STATIC PRESSURE RATINGS		APPROVED SIZES	SCALE: N.T.S.	SIZE: A
DESIGN (PSF):	+31.60/-35.40	MAX WIDTH: 16'-2"	DATE	NAME
TEST (PSF):	+47.40/-53.10	MAX HEIGHT: 24'-1"	DRAWN	TLC
IMPACT/CYCLIC RATED (YES/NO):	YES	MAX SECTION HEIGHT: 24"	CHECKED	TLC
MODELS C20/C24/C2400			SHEET 3 OF 3	
WINDLOAD SPECIFICATION OPTION CODE 2046			DRAWING PART NO.	REV.
			365579	A