

NOTES:

1. STANDARD GLAZING OPTION - .125" MINIMUM DSB GLAZING MEETS UNIFORM STATIC DESIGN PRESSURES SHOWN ON THIS DRAWING. GLAZING SHALL HAVE A MAXIMUM HEIGHT OF 6.70" AND A MAXIMUM LENGTH OF 24.00". GLAZING IS NOT IMPACT RESISTANT AND DOES NOT MEET THE REQUIREMENTS FOR WIND-BORNE DEBRIS REGIONS.

2. ALUMINUM FULL VIEW OPTION - ALUMINUM FULL VIEW SECTION MAY REPLACE ANY SECTION EXCEPT TOP AND BOTTOM PANELS. ALUMINUM FULL VIEW SECTION SHALL HAVE RAILS AND STILES OF EXTRUDED ALUMINUM ALLOY 6063-T6 WITH A 2" INTEGRAL FIN AND .125" MINIMUM DSB GLAZING INSTALLED WITH ALUMINUM RETAINERS IN ORDER TO MEET UNIFORM STATIC DESIGN PRESSURES SHOWN ON THIS DRAWING. AFV PANEL SIZE IS 47.5"x21.9" (MAX). GLAZING IS NOT IMPACT RESISTANT AND DOES NOT MEET THE REQUIREMENTS FOR WIND-BORNE DEBRIS REGIONS.

3. MINIMUM OF 1" OVERLAP ON BOTH JAMBS REQUIRED TO MEET NEGATIVE DESIGN PRESSURES.

4. SLIDE LOCKS OR OPERATOR REQUIRED.

5. SECTION STEEL TO HAVE THE FOLLOWING MINIMUM THICKNESS:

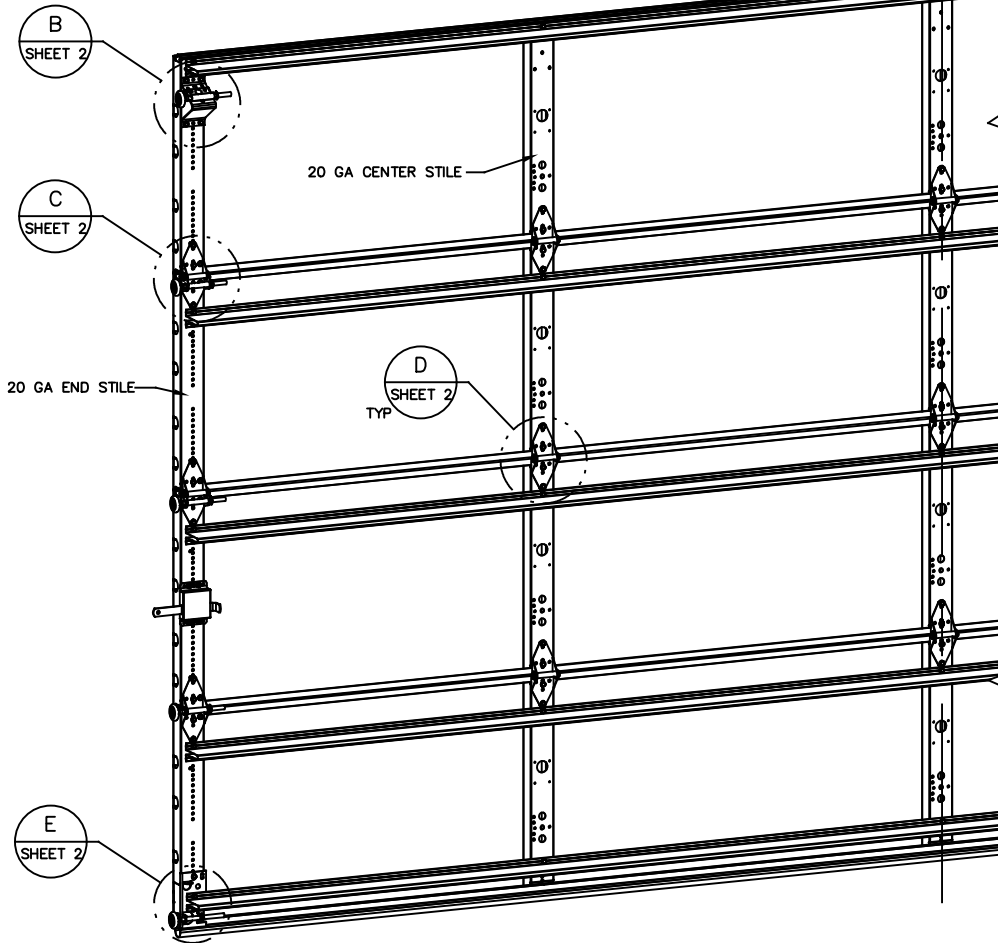
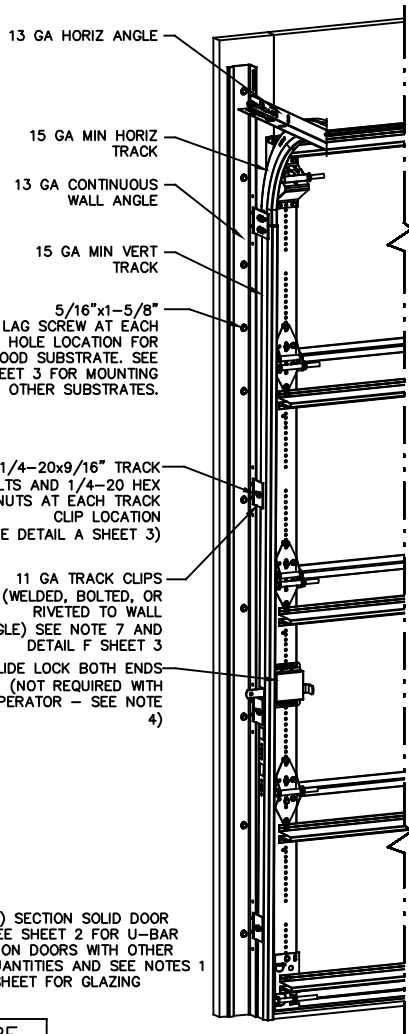
- C20 - 20 GA
- C24 - 24 GA
- C2400 - 25 GA

6. THE DESIGN OF THE SUPPORTING STRUCTURAL ELEMENTS SHALL BE THE RESPONSIBILITY OF THE PROFESSIONAL OF RECORD FOR THE BUILDING OR STRUCTURE AND IN ACCORDANCE WITH CURRENT BUILDING CODES FOR THE LOADS LISTED ON THIS DRAWING.

7. TRACK CLIPS SHALL BE LOCATED WITH CENTERLINE OF BOTTOM CLIP SPACED 10" MAX FROM BOTTOM OF TRACK AND REMAINING TRACK CLIPS SPACED AT 24" O.C. MAX. SPACING BETWEEN TOP TRACK CLIP AND SPLICE PLATE SHALL BE 30" O.C. MAX.

8. WHEN MOUNTING TO WOOD, DOOR JAMB TO BE MINIMUM 2x6 STRUCTURAL GRADE LUMBER. REFER TO JAMB CONNECTION SUPPLEMENT FOR ATTACHMENT TO SUPPORTING STRUCTURE.

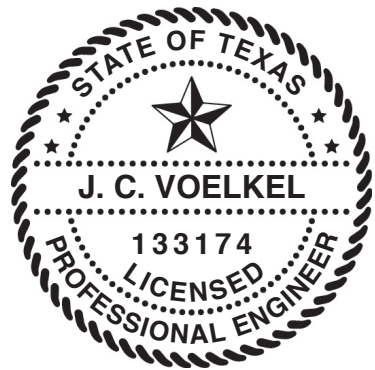
NOTE: (4) SECTION SOLID DOOR SHOWN. SEE SHEET 2 FOR U-BAR LOCATIONS ON DOORS WITH OTHER SECTION QUANTITIES AND SEE NOTES 1 & 2 THIS SHEET FOR GLAZING OPTIONS.



REVISIONS

- P1 MODIFIED MOUNTING TO STEEL DETAIL. ADDED DETAIL F ON SHEET 2 FOR TRACK CLIPS. GRT 4/20/08
- P2 UPDATED TITLE BLOCK GRT 3/22/12
- P3 UPDATED TITLE BLOCK ESC 10/13/17
- REV D - DRAWING UPDATES TLC 10/27/20
- REV E - ADDED SIZE OF AFV PANEL TLC 4/28/21

SUPERIMPOSED DESIGN PRESSURE LOADS ON SUPPORTING STRUCTURE		
MAX DOOR WIDTH	DOOR HEIGHT	MAX UNIFORM LOAD EACH JAMB (PLF)
16'-2"	ALL	+92.2/-102.7



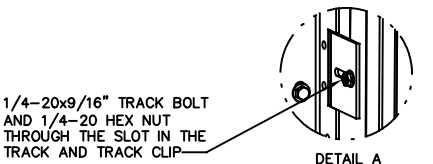
THE DOORS ARE DESIGNED AND MANUFACTURED TO COMPLY WITH THE 2018 IRC AND THE 2018 IBC.

Wayne Dalton
GARAGE DOORS™

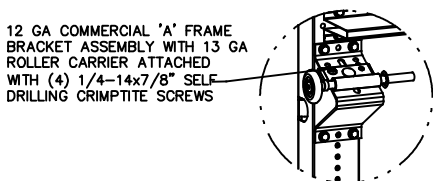
A DIVISION OF OVERHEAD DOOR CORP.
3395 ADDISON DRIVE
PENSACOLA, FLORIDA 32514
(850) 474-9890

STATIC PRESSURE RATINGS		APPROVED SIZES		SCALE: N.T.S.	SIZE: A
DESIGN (PSF):	+11.40/-12.70	MAX WIDTH:	16'-2"	DATE	NAME
TEST (PSF):	+17.10/-19.05	MAX HEIGHT:	24'-1"	DRAWN	GRT
IMPACT/CYCLIC RATED (YES/NO):	NO	MAX SECTION HEIGHT:	24"	CHECKED	TLC
MODELS C20/C24/C2400				SHEET 1 OF 3	
WINDLOAD SPECIFICATION OPTION CODE 2040				DRAWING PART NO.	REV.
				332584	E

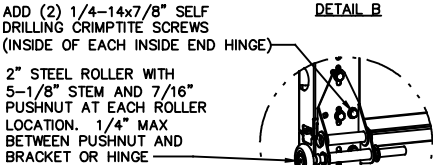
PROFESSIONAL ENGINEER'S SEAL PROVIDED ONLY FOR VERIFICATION OF WINDLOAD CONSTRUCTION DETAILS.



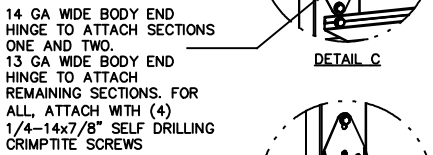
DETAIL A



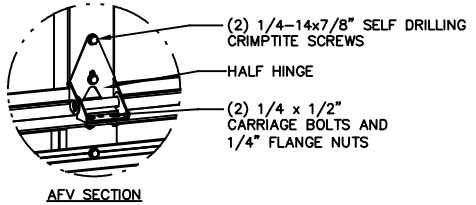
DETAIL B



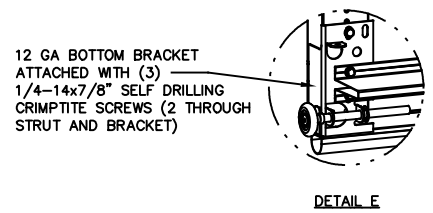
DETAIL C



SOLID SECTION

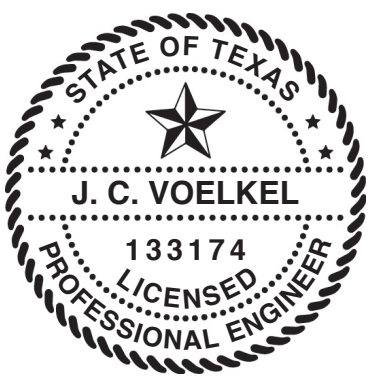
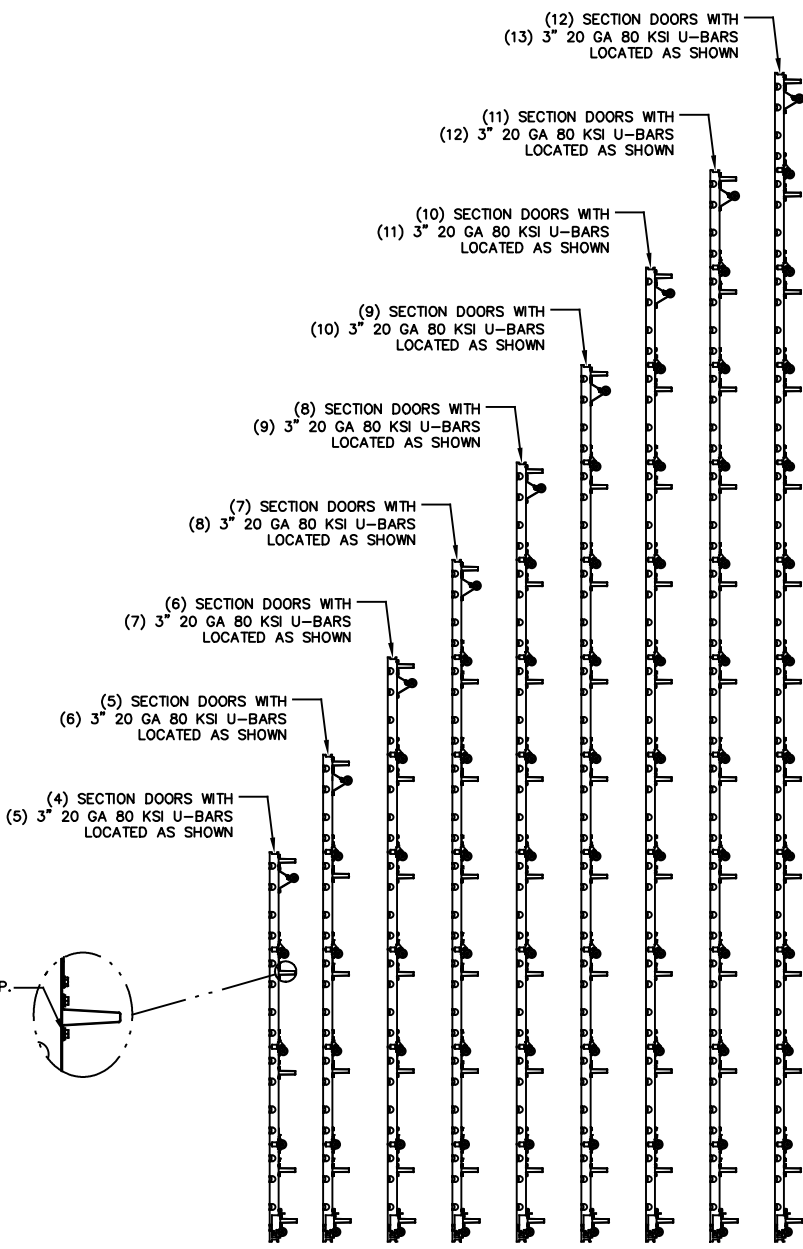


AFV SECTION



DETAIL E

ATTACH U-BARS WITH (2) 1/4-14x7/8" SELF DRILLING CRIMP TITE SCREWS AT ALL STILE LOCATIONS, TYP.



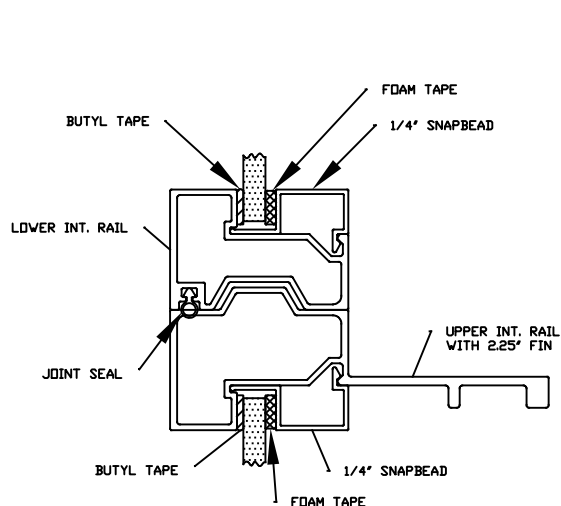
J. CHRISTIAN VOELKEL, PE
312 N. NEW WARRINGTON ROAD, UNIT 1A
PENSACOLA, FL
FL PE 82229
TX PE 133174

PROFESSIONAL ENGINEER'S SEAL PROVIDED ONLY FOR VERIFICATION OF WINDLOAD CONSTRUCTION DETAILS.

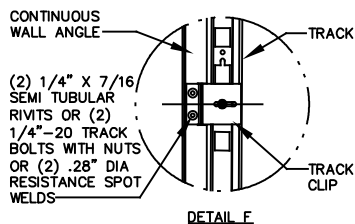
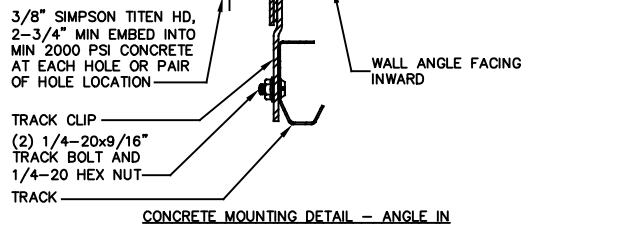
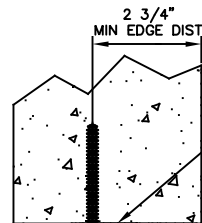
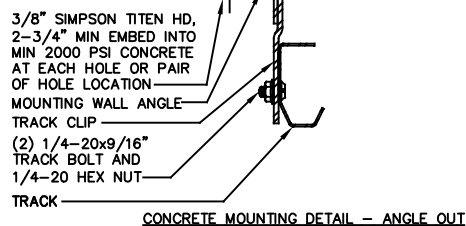
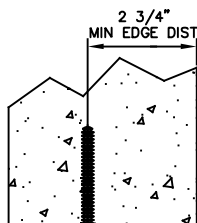
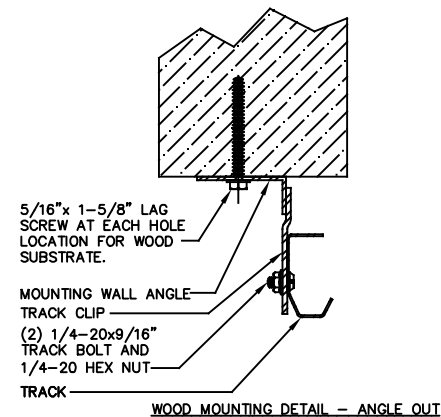
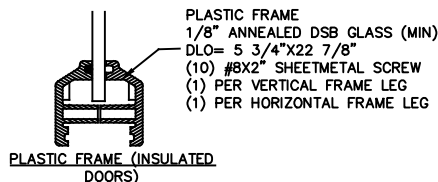
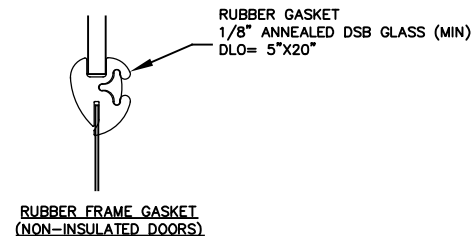


A DIVISION OF OVERHEAD DOOR CORP.
3395 ADDISON DRIVE
PENSACOLA, FLORIDA 32514
(850) 474-9890

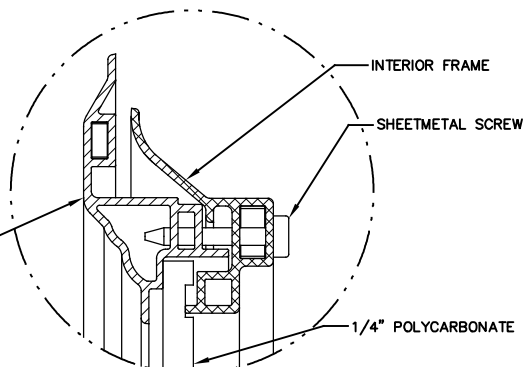
STATIC PRESSURE RATINGS		APPROVED SIZES		SCALE: N.T.S.		SIZE: A	
DESIGN (PSF):	+11.40/-12.70	MAX WIDTH:	16'-2"	DATE	5/22/07	NAME	GRT
TEST (PSF):	+17.10/-19.05	MAX HEIGHT:	24'-1"	DRAWN	4/28/21	CHECKED	TLC
IMPACT/CYCLIC RATED (YES/NO): NO				MAX SECTION HEIGHT: 24"			
MODELS C20/C24/C2400						SHEET 2 OF 3	
WINDLOAD SPECIFICATION OPTION CODE 2040						DRAWING PART NO. 332584	
						REV. E	



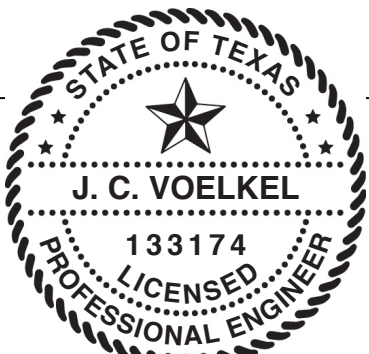
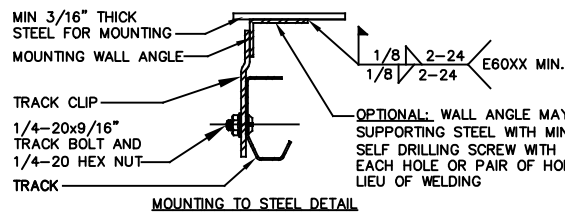
ALUMINUM FULL VIEW FRAME
ALUMINUM FULL VIEW FRAME



EXTERIOR FRAME



IMPACT WINDOW / ALUMINUM FRAME WITH GROOVED POLYCARBONATE



J. CHRISTIAN VOELKEL, PE
312 N. NEW WARRINGTON ROAD, UNIT 1A
PENSACOLA, FL
FL PE 82229
TX PE 133174
PROFESSIONAL ENGINEER'S SEAL PROVIDED ONLY FOR VERIFICATION OF WINDLOAD CONSTRUCTION DETAILS.



A DIVISION OF OVERHEAD DOOR CORP.
3395 ADDISON DRIVE
PENSACOLA, FLORIDA 32514
(850) 474-9890

STATIC PRESSURE RATINGS		APPROVED SIZES		SCALE: N.T.S.	SIZE: A
DESIGN (PSF):	+11.40/-12.70	MAX WIDTH:	16'-2"	DATE	NAME
TEST (PSF):	+17.10/-19.05	MAX HEIGHT:	24'-1"	DRAWN	GRT
IMPACT/CYCLIC RATED (YES/NO):	NO	MAX SECTION HEIGHT:	24"	CHECKED	TLC
MODELS C20/C24/C2400				SHEET 3 OF 3	
WINDLOAD SPECIFICATION OPTION CODE 2040				DRAWING PART NO.	REV.
				332584	E