

**NOTES:**

1. NON-IMPACT RESISTANT OPTION - .125" MINIMUM DSB GLAZING MEETS UNIFORM STATIC DESIGN PRESSURES SHOWN ON THIS DRAWING. GLAZING SHALL HAVE A MAXIMUM HEIGHT OF 6.70" AND A MAXIMUM LENGTH OF 24.00". GLAZING IS NOT IMPACT RESISTANT AND DOES NOT MEET THE REQUIREMENTS FOR WIND-BORNE DEBRIS REGIONS.

2. IMPACT RESISTANT GLAZING OPTION - IMPACT RESISTANT GLAZING SYSTEM MAY BE INSTALLED IN INTERMEDIATE SECTIONS (WITH OR WITHOUT DECORATIVE INSERTS). GLAZING SHALL BE 1/4" POLYCARBONATE. MAXIMUM GLAZING DIMENSIONS SHALL BE 11" x 17", FASTENED WITH A MINIMUM #8 x 1" SMS: 3X ALONG THE HORIZONTAL AND 2X ALONG THE VERTICAL.

3. ALUMINUM FULL VIEW OPTION - ALUMINUM FULL VIEW SECTION MAY REPLACE ANY SECTION EXCEPT TOP AND BOTTOM PANELS. ALUMINUM FULL VIEW SECTION SHALL HAVE RAILS AND STILES OF EXTRUDED ALUMINUM ALLOY 6063-T6 AND .125" MINIMUM DSB GLAZING INSTALLED WITH ALUMINUM RETAINERS IN ORDER TO MEET UNIFORM STATIC DESIGN PRESSURES SHOWN ON THIS DRAWING. AFV PANEL SIZE IS 46.5"x21.9" (MAX). GLAZING IS NOT IMPACT RESISTANT AND DOES NOT MEET THE REQUIREMENTS FOR WIND-BORNE DEBRIS REGIONS.

4. MINIMUM OF 1" OVERLAP ON BOTH JAMBS REQUIRED TO MEET NEGATIVE DESIGN PRESSURES.

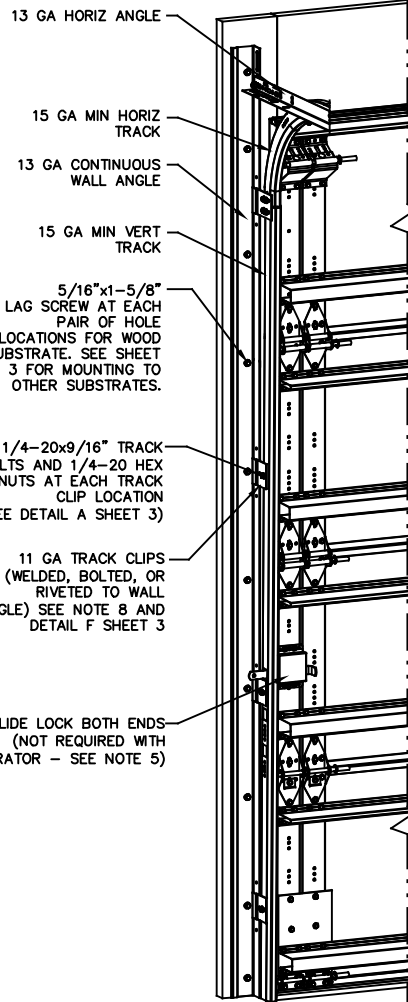
5. SLIDE LOCK OR OPERATOR REQUIRED.

6. SECTION STEEL TO HAVE THE FOLLOWING MINIMUM THICKNESS:  
C20 - 20 GA  
C24 - 24 GA  
C2400 - 25 GA

7. THE DESIGN OF THE SUPPORTING STRUCTURAL ELEMENTS SHALL BE THE RESPONSIBILITY OF THE PROFESSIONAL OF RECORD FOR THE BUILDING OR STRUCTURE AND IN ACCORDANCE WITH CURRENT BUILDING CODES FOR THE LOADS LISTED ON THIS DRAWING.

8. TRACK CLIPS SHALL BE LOCATED WITH CENTERLINE OF BOTTOM CLIP SPACED 10" MAX FROM BOTTOM OF TRACK AND REMAINING TRACK CLIPS SPACED AT 24" O.C. MAX. SPACING BETWEEN TOP TRACK CLIP AND SPLICE PLATE SHALL BE 30" O.C. MAX.

9. WHEN MOUNTING TO WOOD, DOOR JAMB TO BE MINIMUM 2x6 STRUCTURAL GRADE LUMBER. REFER TO JAMB CONNECTION SUPPLEMENT FOR ATTACHMENT TO SUPPORTING STRUCTURE.



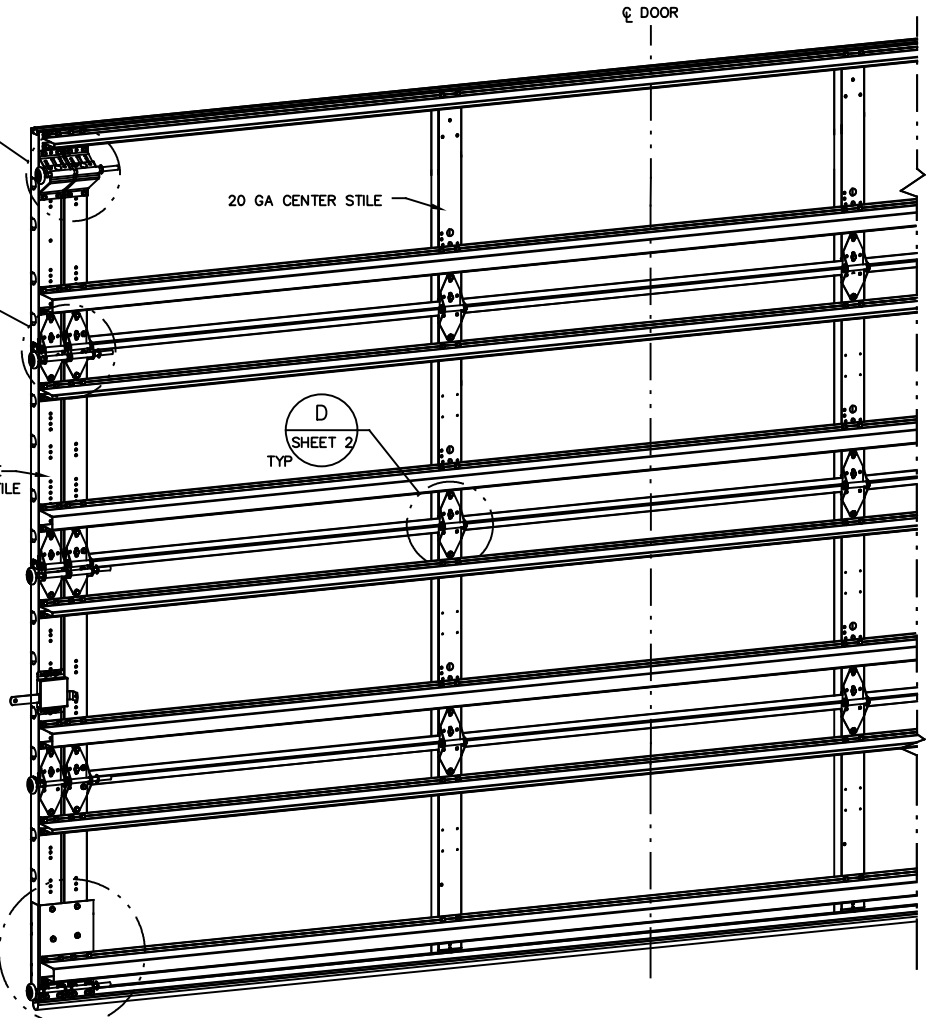
NOTE: (4) SECTION SOLID DOOR SHOWN. SEE SHEET 2 FOR C-CHANNEL LOCATIONS ON DOORS WITH OTHER SECTION QUANTITIES AND SEE NOTES 1, 2, & 3 OF THIS SHEET FOR GLAZING OPTIONS.

B SHEET 2

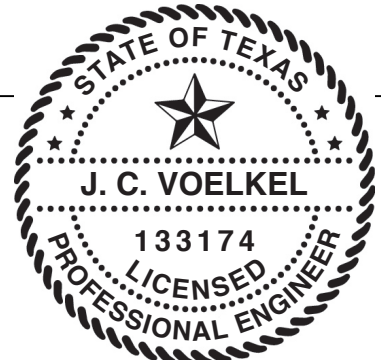
C SHEET 2

D SHEET 2 TYP

E SHEET 2



REVISIONS  
REV - INITIAL DRAWING  
TLC 11/13/20  
REV A - ADDED SIZE OF AFV PANEL  
TLC 4/28/21



SUPERIMPOSED DESIGN PRESSURE LOADS ON SUPPORTING STRUCTURE		
MAX DOOR WIDTH	DOOR HEIGHT	MAX UNIFORM LOAD EACH JAMB (PLF)
12'-2"	ALL	+267.7/-303.0

THE DOORS ARE DESIGNED AND MANUFACTURED TO COMPLY WITH THE 2018 IRC AND THE 2018 IBC.

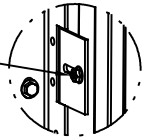
**Wayne Dalton**  
GARAGE DOORS

A DIVISION OF OVERHEAD DOOR CORP.  
3395 ADDISON DRIVE  
PENSACOLA, FLORIDA 32514  
(850) 474-9890

STATIC PRESSURE RATINGS		APPROVED SIZES	SCALE: N.T.S.	SIZE: A
DESIGN (PSF):	+44.00/-49.80	MAX WIDTH: 12'-2"	DATE	NAME
TEST (PSF):	+66.00/-74.70	MAX HEIGHT: 24'-1"	DRAWN	TLC
IMPACT/CYCLIC RATED (YES/NO):	YES	MAX SECTION HEIGHT: 24"	CHECKED	TLC
MODELS C20/C24/C2400			SHEET 1 OF 3	
WINDLOAD SPECIFICATION OPTION CODE 2026			DRAWING PART NO.	REV.
			365575	A

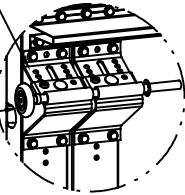
PROFESSIONAL ENGINEER'S SEAL PROVIDED ONLY FOR VERIFICATION OF WINDLOAD CONSTRUCTION DETAILS.

1/4-20x9/16" TRACK BOLT AND 1/4-20 HEX NUT THROUGH THE SLOT IN THE TRACK AND TRACK CLIP



DETAIL A

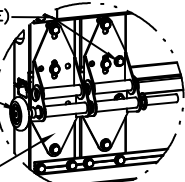
12 GA COMMERCIAL 'A' FRAME BRACKET ASSEMBLY WITH 13 GA ROLLER CARRIER ATTACHED WITH (4) 1/4-14x7/8" SELF DRILLING CRIMPITITE SCREWS



DETAIL B

2" 1144 STEEL ROLLER WITH 7/16" DIA. x 9" LONG STEM AND 7/16" PUSH NUT AT TOP ROLLER LOCATION. 1/4" MAX BETWEEN PUSH NUT AND BRACKET.

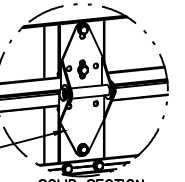
ADD (2) 1/4-14x7/8" SELF DRILLING CRIMPITITE SCREWS (INSIDE OF EACH INSIDE END HINGE)



DETAIL C

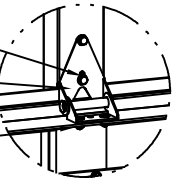
2" 1144 STEEL ROLLER WITH 7/16" DIA. x 9" LONG STEM AT EACH ROLLER LOCATION WITH 7/16" PUSH NUT 1/4" MAX BETWEEN PUSH NUT AND OUTER HINGE.

13 GA MODIFIED WIDE BODY END HINGE ATTACHED WITH (4) 1/4-14x7/8" SELF DRILLING CRIMPITITE SCREWS



SOLID SECTION

14 GA WIDE BODY INTERMEDIATE HINGE ATTACHED WITH (4) 1/4-14x7/8" SELF DRILLING CRIMPITITE SCREWS



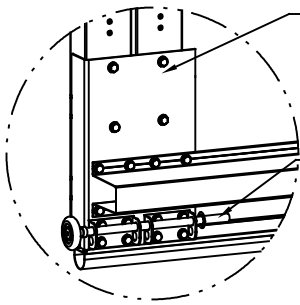
AFV SECTION

(2) 1/4-14x7/8" SELF DRILLING CRIMPITITE SCREWS

HALF HINGE

(2) 1/4 x 1/2" CARRIAGE BOLTS AND 1/4" FLANGE NUTS

DETAIL D

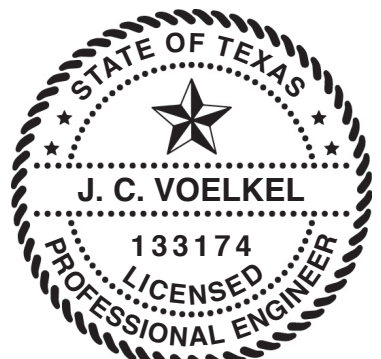
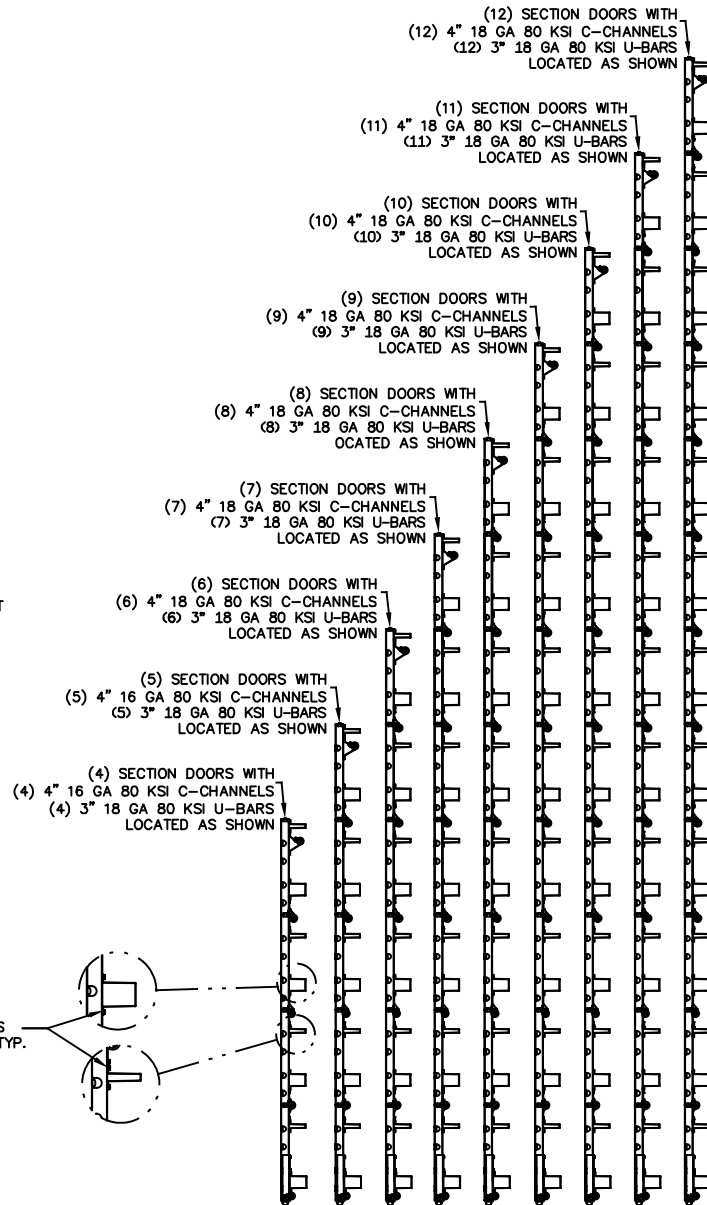


DETAIL E

11 GA DOUBLE BOTTOM BRACKET ATTACHED WITH (20) 1/4-14x7/8" SELF DRILLING CRIMPITITE SCREWS (8 OF WHICH ARE USED IN ATTACHMENT OF STRUT AND 8 OF WHICH ARE USED TO ATTACH 12 GA ROLLER CARRIERS)

2" 1144 STEEL ROLLER WITH 7/16" DIA. x 9" LONG STEM AND 7/16" PUSH NUT. 1/4" MAX BETWEEN PUSH NUT AND BRACKET.

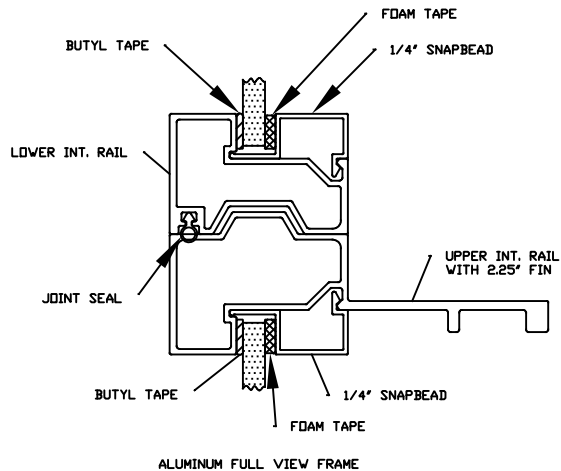
ATTACH U-BARS WITH (4) 1/4-14x7/8" SELF DRILLING CRIMPITITE SCREWS AT ALL STILE LOCATIONS, TYP.



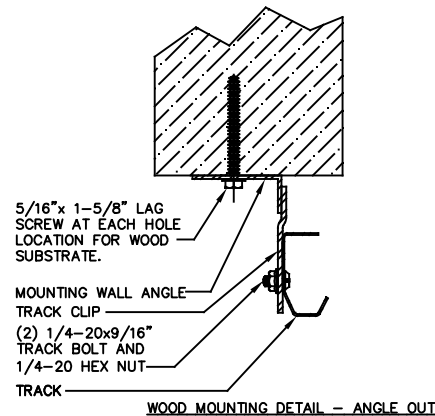
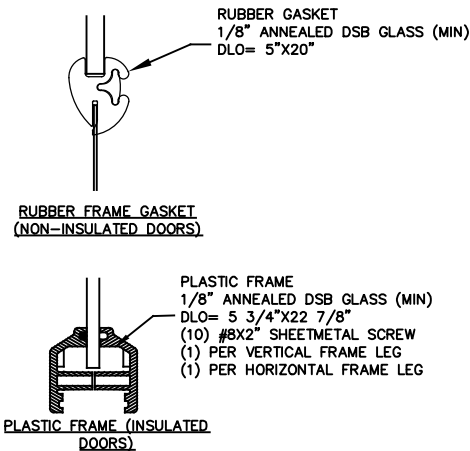
J. CHRISTIAN VOELKEL, PE  
 312 N. NEW WARRINGTON ROAD, UNIT 1A  
 PENSACOLA, FL  
 FL PE 82229  
 TX PE 133174

PROFESSIONAL ENGINEER'S SEAL PROVIDED ONLY FOR VERIFICATION OF WINDLOAD CONSTRUCTION DETAILS.

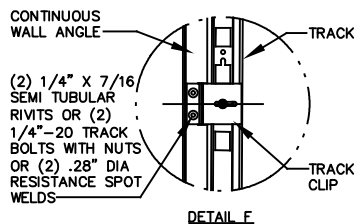
<p><b>Wayne Dalton</b> GARAGE DOORS</p> <p>A DIVISION OF OVERHEAD DOOR CORP.          3395 ADDISON DRIVE          PENSACOLA, FLORIDA 32514          (850) 474-9890</p>	STATIC PRESSURE RATINGS		APPROVED SIZES		SCALE: N.T.S.	SIZE: A	
	DESIGN (PSF):	+44.00/-49.80	MAX WIDTH:	12'-2"	DATE	NAME	
	TEST (PSF):	+66.00/-74.70	MAX HEIGHT:	24'-1"	DRAWN	10/13/20	TLC
IMPACT/CYCLIC RATED (YES/NO): YES		MAX SECTION HEIGHT: 24"	CHECKED	4/28/21	TLC		
MODELS C20/C24/C2400						SHEET 2 OF 3	
WINDLOAD SPECIFICATION OPTION CODE 2026						DRAWING PART NO.	REV.
						365575	A



ALUMINUM FULL VIEW FRAME

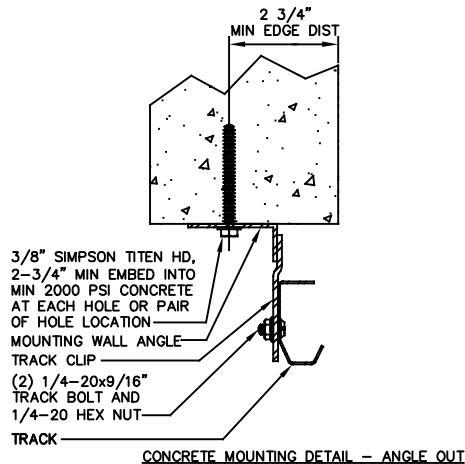


WOOD MOUNTING DETAIL - ANGLE OUT

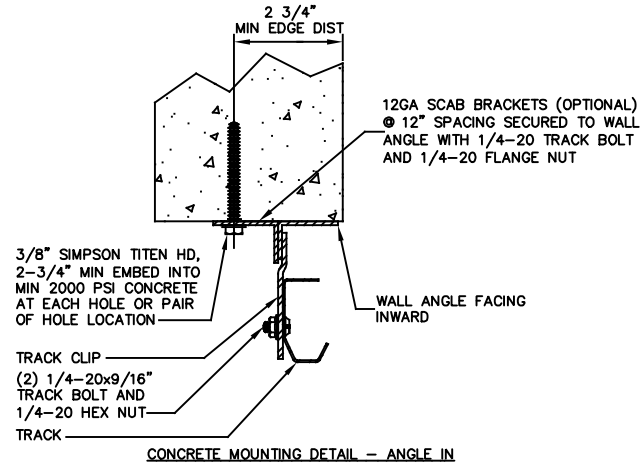


DETAIL F

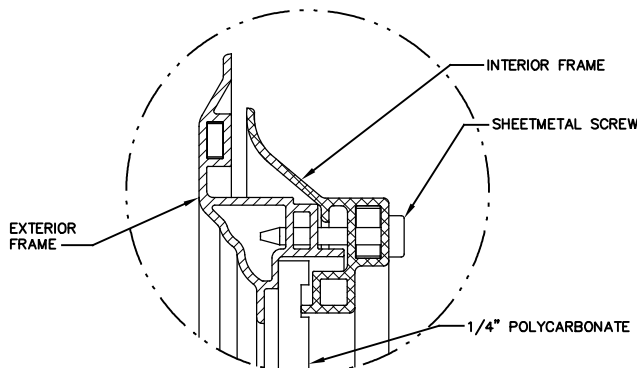
EXTERIOR FRAME



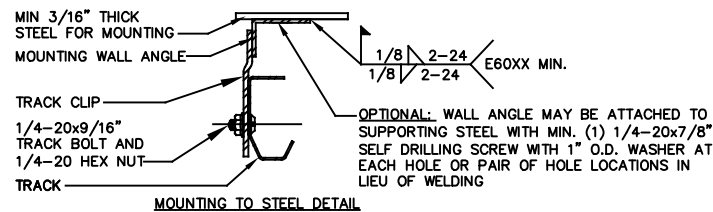
CONCRETE MOUNTING DETAIL - ANGLE OUT



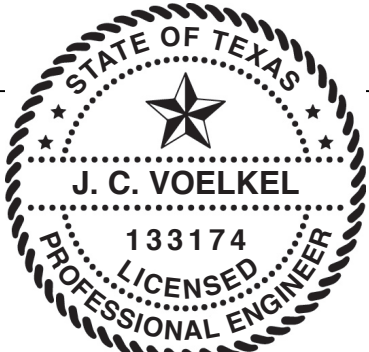
CONCRETE MOUNTING DETAIL - ANGLE IN



IMPACT WINDOW / ALUMINUM FRAME WITH GROOVED POLYCARBONATE



MOUNTING TO STEEL DETAIL



J. CHRISTIAN VOELKEL, PE  
 312 N. NEW WARRINGTON ROAD, UNIT 1A  
 PENSACOLA, FL  
 FL PE 82229  
 TX PE 133174  
 PROFESSIONAL ENGINEER'S SEAL PROVIDED ONLY FOR  
 VERIFICATION OF WINDLOAD CONSTRUCTION DETAILS.

**Wayne Dalton**  
 GARAGE DOORS

A DIVISION OF OVERHEAD DOOR CORP.  
 3395 ADDISON DRIVE  
 PENSACOLA, FLORIDA 32514  
 (850) 474-9890

STATIC PRESSURE RATINGS		APPROVED SIZES		SCALE: N.T.S.	SIZE: A
DESIGN (PSF):	+44.00/-49.80	MAX WIDTH:	12'-2"	DATE	NAME
TEST (PSF):	+66.00/-74.70	MAX HEIGHT:	24'-1"	DRAWN	TLC
IMPACT/CYCLIC RATED (YES/NO):	YES	MAX SECTION HEIGHT:	24'	CHECKED	TLC
MODELS C20/C24/C2400				SHEET 3 OF 3	
WINDLOAD SPECIFICATION OPTION CODE 2026				DRAWING PART NO.	REV.
				365575	A