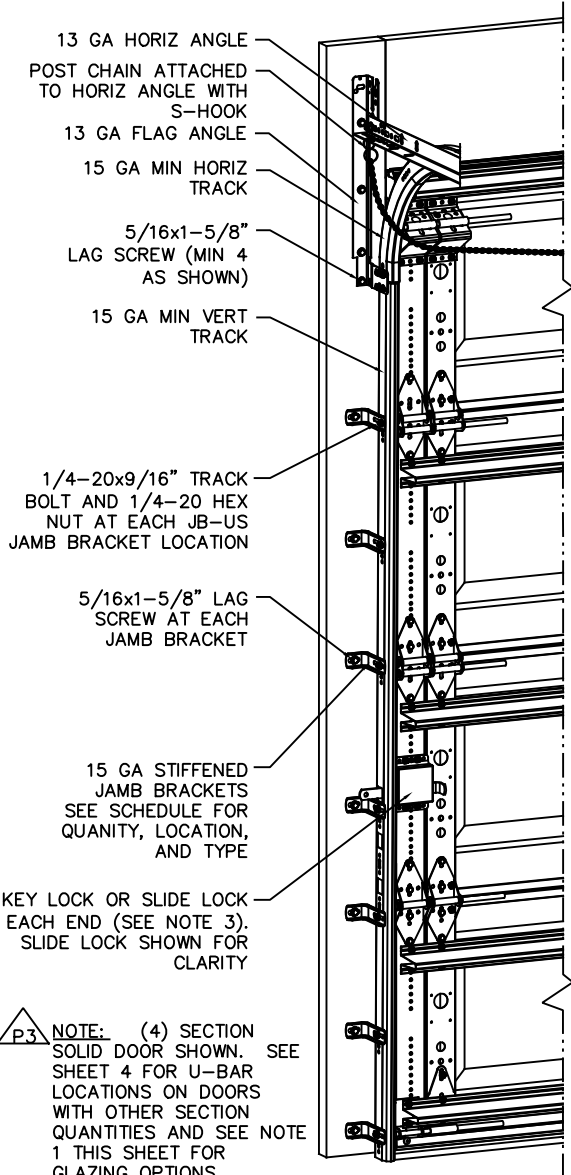


REVISIONS

- P1 ADDED POST COMPONENT DETAILS TO SHEET 3. MOVED JAMB DETAIL TO SHEET 4. REVISED CONCRETE SPECIFICATION FROM 1" TO 1 1/2" AND ADDED DETAIL H SHEET FOR CONCRETE SPECIFICATION. GRT 8/23/07
- P2 MODIFIED TRACK NOTE FOR DOORS WITH DECORATIVE OVERLAY. ADDED PAW LAYOUTS FOR 1 1/2" TRACKS IN JOIN NOTES. ADDED CONTINUOUS WALL ANGLE DETAIL. SHEET 4 UPDATED NOTES FOR CONTINUOUS WALL ANGLE MOUNTING. GRT 10/10/07
- P3 ADDED IMPACT RESISTANT GLAZING. MODIFIED NOTES SHEET 1 FOR GLAZING. ADDED DETAIL 4. SHEET 2 FOR GLAZING. GRT 11/06/07
- P4 ADDED CHAIR TO ATTACH POST TO TRACK AND FROM POST TO POST. EXTERNAL UNFINISHED DIMENSIONS ON SHEET 1 AND SHEET 4. U-BAR IS ON SHEET 2. ADDED NOTE ON SHEET 1. ADDED POST STORAGE SHEET. GRT 5/19/08
- P5 UPDATED TITLE BLOCK. ADDED SPRINT PROFILE. UPDATED PERIODICITY SIGN. GRT 5/19/10
- P6 -- ADDED ADDITIONAL PAGE TO CLEAN UP DRAWING. GRT 11/17/14
- REV 9 -- ADDED IBC/IRC NOTES. CHANGED UP DRAWING. TLC 1/21/22

NOTES:

1. IMPACT RESISTANT GLAZING SYSTEM MAY BE INSTALLED IN TOP OR INTERMEDIATE SECTION (WITH OR WITHOUT DECORATIVE INSERTS). GLAZING SHALL BE 1/4" MAKROLON-AR POLYCARBONATE OR EQUAL (MIAMI-DADE APPROVED) SECURED WITH MINIMUM (16) #8X3/4" SHEET METAL SCREWS WITH STAINLESS BACKED RUBBER WASHERS; (3) ALONG EACH VERTICAL LEG AND (5) ALONG EACH HORIZONTAL LEG. MAXIMUM DAYLIGHT OPENING SHALL BE 15.87" x 9.57". SEE DETAIL J ON SHEET 4 FOR ASSEMBLY DETAILS.
2. VINYL OR WOOD DOOR STOP NAILED A MAXIMUM OF 6" O.C. MUST OVERLAP TOP AND BOTH ENDS OF PANELS MINIMUM 7/16" TO MEET NEGATIVE PRESSURES.
3. KEY LOCK OR SLIDE LOCK REQUIRED.
4. SECTION STEEL TO HAVE A MINIMUM 24 GA THICKNESS WITH A MINIMUM G90 COATING AND A MINIMUM YIELD STRENGTH OF 33.8 KSI.
5. THE DESIGN OF THE SUPPORTING STRUCTURAL ELEMENTS SHALL BE THE RESPONSIBILITY OF THE PROFESSIONAL OF RECORD FOR THE BUILDING OR STRUCTURE AND IN ACCORDANCE WITH CURRENT BUILDING CODES FOR THE LOADS LISTED ON THIS DRAWING.
6. WOOD SUBSTRATE FOR DOOR JAMB IS TO BE MINIMUM 2x6 NO. 3 SOUTHERN PINE RELATIVELY KNOT FREE. FOR DIRECT MOUNTING OF JAMB BRACKETS TO OTHER SUBSTRATES, SEE JAMB CONNECTION SUPPLEMENT.
7. FOR LOW HEAD ROOM LIFT CONDITIONS, TOP BRACKET SHALL BE A 13 GA LHR 7/4 TOP BRACKET WITH A MINIMUM OF (3) 1/4-14x7/8" SELF DRILLING CRIMP TITE SCREWS IN LIEU OF THE BRACKET SHOWN ON THIS DRAWING. U-BAR ON TOP SECTION SHALL BE INSTALLED ON TOP OF LHR TOP BRACKETS.
8. DOOR WITHOUT POST SYSTEM HAS BEEN TESTED TO WITHSTAND DESIGN PRESSURES CORRESPONDING TO A 75 MPH WIND SPEED (+/-14.40 PSF). POST SYSTEM SHALL BE INSTALLED WHEN WIND SPEEDS ARE EXPECTED TO EXCEED 75 MPH.
10. THIS DOOR HAS NOT BEEN TESTED FOR AIR INFILTRATION.
11. COMPLIES WITH THE REQUIREMENTS OF IBC/IRC 2018



NOTE: (4) SECTION SOLID DOOR SHOWN. SEE SHEET 4 FOR U-BAR LOCATIONS ON DOORS WITH OTHER SECTION QUANTITIES AND SEE NOTE 1 THIS SHEET FOR GLAZING OPTIONS.

JAMB BRACKET SCHEDULE

DOOR HEIGHT	NO. OF SECTIONS	NO. OF JAMB BRACKETS (EACH JAMB)	LOCATION OF CENTERLINE OF JAMB BRACKETS MEASURED FROM BOTTOM OF TRACK (ALL DIMENSIONS ± 2")
6'-6"	4	7	2" (JB-US), 10" (JB-US), 21-3/4" (JB-US), 29-3/4" (JB-US), 39" (JB-US), 48" (JB-US), 57-1/4" (JB-US)
7'-0"	4	7	2" (JB-US), 10" (JB-US), 21-3/4" (JB-US), 29-3/4" (JB-US), 42" (JB-US), 52-1/2" (JB-US), 63-1/4" (JB-US)
7'-6"	5	8	2" (JB-US), 10" (JB-US), 18-3/4" (JB-US), 26-3/4" (JB-US), 36" (JB-US), 45" (JB-US), 54-1/4" (JB-US), 74-1/2" (JB-US)
8'-0"	5	8	2" (JB-US), 10" (JB-US), 21-3/4" (JB-US), 29-3/4" (JB-US), 39" (JB-US), 48" (JB-US), 57-1/2" (JB-US), 75-1/2" (JB-US)

NOTE: (JB-US) FOLLOWING DIMENSION DENOTES SLOTTED JAMB BRACKET ATTACHED TO TRACK WITH 1/4-20x9/16" TRACK BOLT AND NUT AS SHOWN ABOVE.

ALL DOORS WITH DECORATIVE OVERLAY REQUIRE USE OF CONTINUOUS WALL ANGLE. SEE SHEETS 6 & 7 FOR DETAILS.

SUPERIMPOSED DESIGN PRESSURE LOADS ON SUPPORTING STRUCTURE

MAX DOOR WIDTH	MAX DOOR HEIGHT	UNIFORM LOAD EACH JAMB (PLF)	POINT LOAD AT HEADER AND SLAB AT EACH POST LOCATION (LBS)
17'-0"	7'-0"	+185.5/-209.6	+1507.4/-1712.9
	8'-0"	+185.5/-209.6	+1704.0/-1936.3
18'-0"	7'-0"	+190.7/-215.7	+1637.0/-1850.5
	8'-0"	+190.7/-215.7	+1860.3/-2102.9

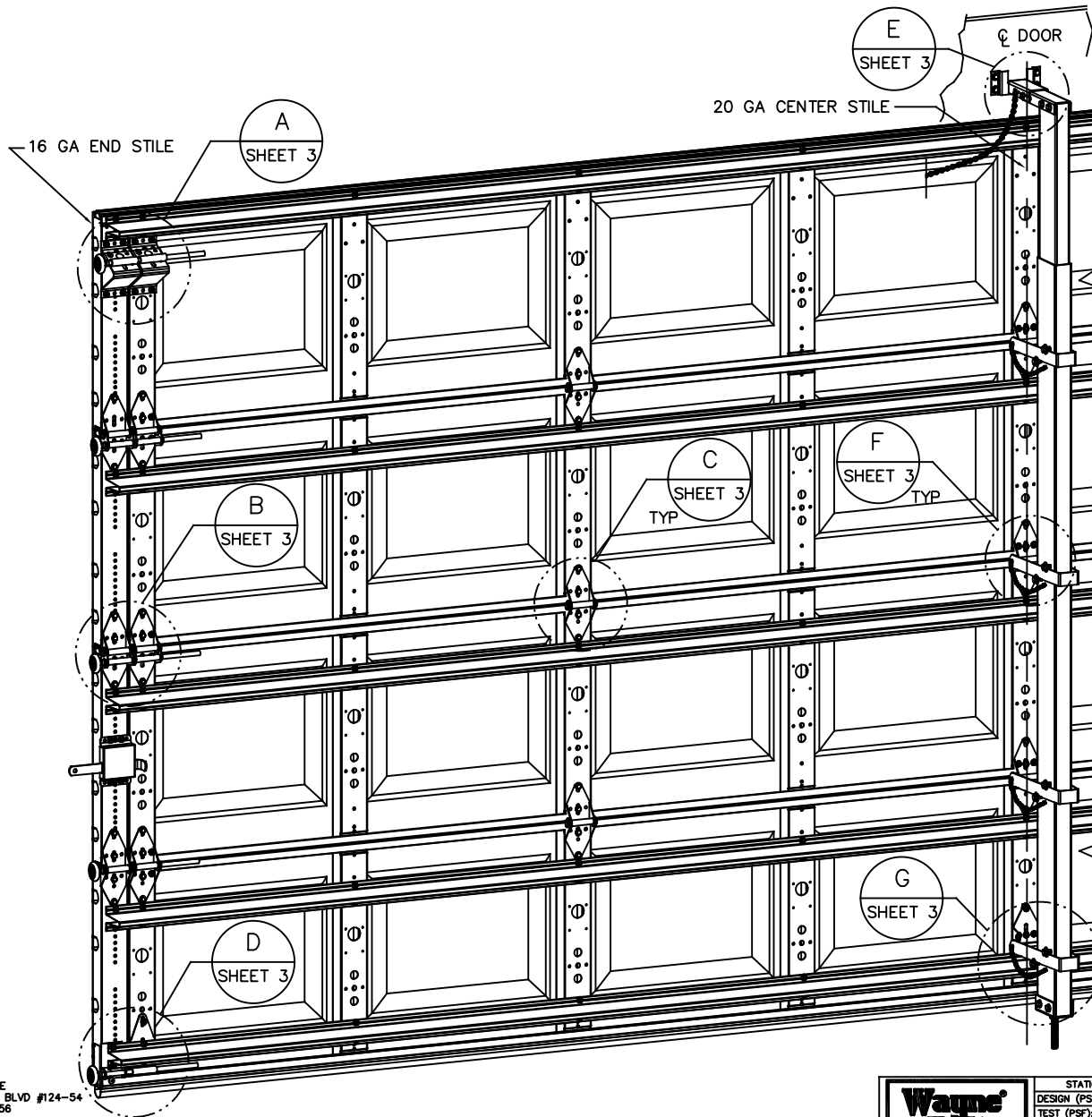
JOHN E. SCATES, PE
2560 KING ARTHUR BLVD #124-54
LEWISVILLE, TX 75056
FL PE 51737
TX PE 56308/F2203

PROFESSIONAL ENGINEER'S SEAL PROVIDED ONLY FOR VERIFICATION OF WINDLOAD CONSTRUCTION DETAILS.



3395 ADDISON DRIVE
PENSACOLA, FLORIDA 32514
(850) 474-9890

STATIC PRESSURE RATINGS		APPROVED SIZES	SCALE: N.T.S.	SIZE: A
DESIGN (PSF):	+48.00/-52.00	MAX WIDTH: 18'-0"	DATE	NAME
TEST (PSF):	+89.00/-78.00	MAX HEIGHT: 8'-0"	DRAWN	GRT
IMPACT/CYCLIC RATED (YES/NO):	YES	MAX SECTION HEIGHT: 21"	CHECKED	TLC
MODEL 8024/8124			SHEET 1 OF 6	
WINDLOAD SPECIFICATION OPTION CODE 1340			DRAWING PART NO.	REV.
			329930	G



NOTE: 18' DOOR SHOWN. SEE SHEET 4 FOR HINGE, STILE, AND POST LOCATIONS ON OTHER SIZE DOORS.

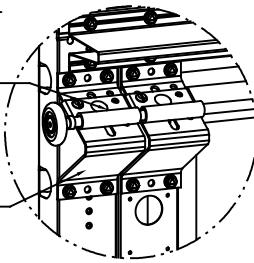
JOHN E. SCATES, PE
 2560 KING ARTHUR BLVD #124-54
 LEWISVILLE, TX 75056
 FL PE 51737
 TX PE 56308/F2203

PROFESSIONAL ENGINEER'S SEAL PROVIDED ONLY FOR VERIFICATION OF WINDLOAD CONSTRUCTION DETAILS.



STATIC PRESSURE RATINGS		APPROVED SIZES	SCALE: N.T.S.	SIZE: A
DESIGN (PSF):	+46.00/-52.00	MAX WIDTH: 18'-0"	DATE	NAME
TEST (PSF):	+69.00/-78.00	MAX HEIGHT: 8'-0"	DRAWN 2/22/07	GRT
IMPACT/CYCLIC RATED (YES/NO):	YES	MAX SECTION HEIGHT: 21"	CHECKED 1/3/22	TLC
MODEL 8024/8124			SHEET 2 OF 6	
WINDLOAD SPECIFICATION OPTION CODE 1340			DRAWING PART NO.	REV.
			329930	G

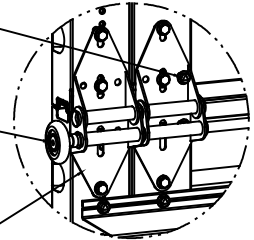
13 GA ROLLER SLIDE ATTACHED TO BRACKET WITH 5/16-18 BOLT & NUT IN CENTER SLOT AND 1/4-20x9/16" TRACK BOLT & 1/4-20 HEX NUT THROUGH ANY TWO ALIGNING HOLES



(2) 13 GA COMMERCIAL 'A' FRAME TOP BRACKETS EACH ATTACHED WITH (4) 1/4-14x7/8" SELF DRILLING CRIMPTITE SCREWS

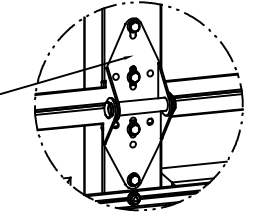
ADD (2) 1/4-14x7/8" SELF DRILLING CRIMPTITE SCREWS (INSIDE OF EACH INSIDE END HINGE)

2" STEEL ROLLER WITH 9" GRADE 1144 OR EQUIVALENT STEM



(2) 14 GA WIDE BODY END HINGES EACH ATTACHED WITH (4) 1/4-14x7/8" SELF DRILLING CRIMPTITE SCREWS

14 GA WIDE BODY INTERMEDIATE HINGE ATTACHED WITH (4) 1/4-14x7/8" SELF DRILLING CRIMPTITE SCREWS

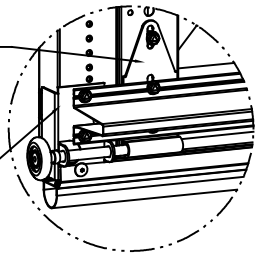


DETAIL A

DETAIL B

DETAIL C

12 GA EXTENSION BRACKET ATTACHED WITH (3) 1/4-14x7/8" SELF DRILLING CRIMPTITE SCREWS (2 THROUGH STRUT AND BRACKET)



14 GA BOTTOM BRACKET ATTACHED WITH (2) 1/4-14x7/8" SELF DRILLING CRIMPTITE SCREWS THROUGH STRUT AND BOTTOM BRACKET AND (1) 1/4-14x5/8" SELF DRILLING TAMPER RESISTANT SCREW

DETAIL D

HEADER

HEADER LOCK BRACKET

#6 BOLT AND NUT

CORROSION RESISTANT CHAIN

(4) 5/16x1-5/8" LAG SCREWS

5/16-18x2-1/2" HEX BOLT & NUT

(4) 1/4-14x7/8" SELF DRILLING CRIMPTITE SCREWS

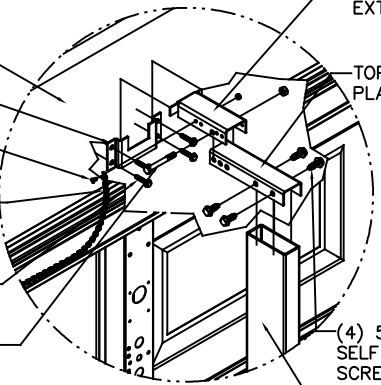
14 GA CENTER HINGE

HITCH PIN

(4) 1/4-14x7/8" SELF DRILLING CRIMPTITE SCREWS ADDED TO EACH HINGE WITH A POST STRAP

CORROSION RESISTANT CHAIN
(2) 5/16-12x1" SELF DRILLING SCREWS WITH 5/16 FLAT WASHERS

#8 x 3/4" SELF DRILLING SCREW



DETAIL E P4

TOP PLATE EXTENSION

TOP LOCK PLATE

(4) 5/16-12x1" SELF DRILLING SCREWS

INNER POST

NO. 2 HALF HINGE ALIGN BOTTOM OF HINGE WITH TOP OF THE U-BAR

(4) 1/4-14x7/8" SELF DRILLING CRIMPTITE SCREWS

HITCH PIN

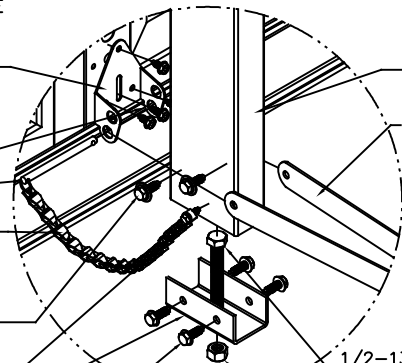
CORROSION RESISTANT CHAIN

(2) 5/16-12x1" SELF DRILLING SCREWS W/ 5/16 FLAT WASHERS

#8 x 3/4" SELF DRILLING SCREW

BOTTOM BRACKET

(4) 5/16-12x1" SELF DRILLING SCREWS



POST

LOCKING STRAP

1/2-13x3-1/2" HEX BOLT

1/2-13 HEX NUT

DETAIL G

2500 PSI MIN CONCRETE

8" X 8" MIN TURNDOWN SLAB AT EDGE

8" MIN EDGE DISTANCE

DETAIL H

JOHN E. SCATES, PE
2560 KING ARTHUR BLVD #124-54
LEWISVILLE, TX 75056
FL PE 51737
TX PE 56308/F2203

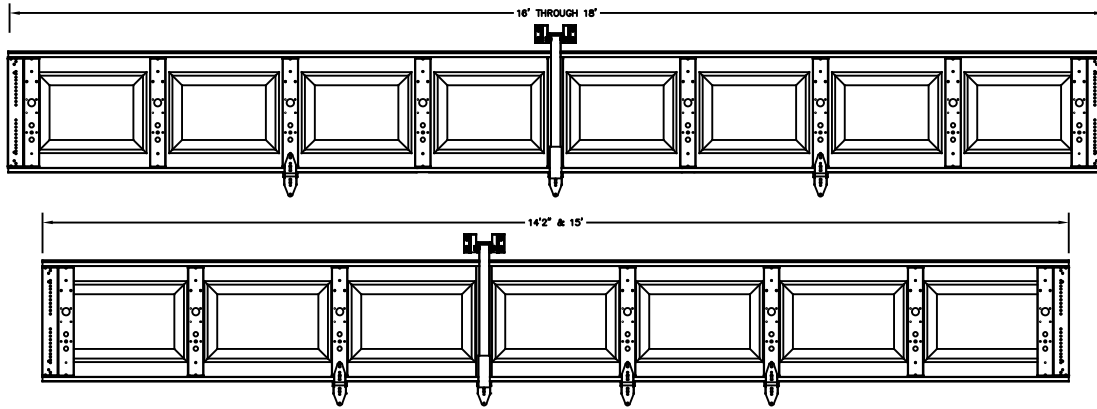
PROFESSIONAL ENGINEER'S SEAL PROVIDED ONLY FOR VERIFICATION OF WINDLOAD CONSTRUCTION DETAILS.



3395 ADDISON DRIVE
PENSACOLA, FLORIDA 32514
(850) 474-9990

STATIC PRESSURE RATINGS		APPROVED SIZES	SCALE: N.T.S.	SIZE: A
DESIGN (PSF):	+46.00/-52.00	MAX WIDTH: 18'-0"	DATE	NAME
TEST (PSF):	+69.00/-78.00	MAX HEIGHT: 8'-0"	DRAWN 2/22/07	GRT
IMPACT/CYCLIC RATED (YES/NO):	YES	MAX SECTION HEIGHT: 21'	CHECKED 1/3/22	TLC
MODEL 8024/8124			SHEET 3 OF 6	
WINDLOAD SPECIFICATION OPTION CODE 1340			DRAWING PART NO.	REV.
			329930	G

CENTER STILE, INTERMEDIATE HINGE, & POST LOCATIONS



(16) #8x3/4" MIN
STAINLESS SCREWS WITH
STAINLESS BACKED
RUBBER WASHERS

1/8" BEAD GE
ULTRAGLAZE
SSG4000AC
STRUCTURAL
SEALANT OR
EQUIVALENT

FACER STEEL

OPTIONAL
NON-STRUCTURAL
DECORATIVE INNER
WINDOW TRIM

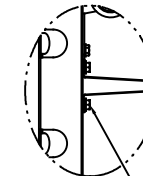
OPTIONAL NON-STRUCTURAL
DECORATIVE OUTER WINDOW
TRIM
1/4" POLYCARBONATE

DETAIL J

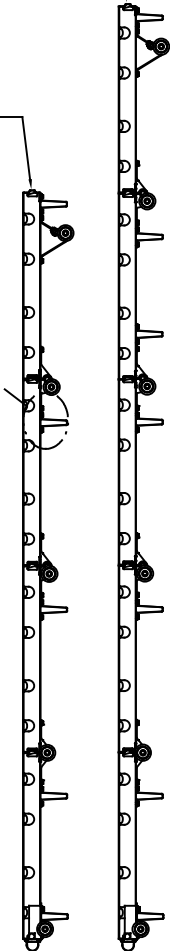
U-BAR LOCATIONS

(5) SECTION DOORS WITH
(7) 3" 20 GA 80 KSI U-BARS
LOCATED AS SHOWN

(4) SECTION DOORS WITH
(5) 3" 20 GA 80 KSI U-BARS
LOCATED AS SHOWN



ATTACH U-BAR WITH
(2) 1/4-14x7/8" SELF
DRILLING CRIMPITE SCREWS
AT EACH STILE LOCATION, TYP.

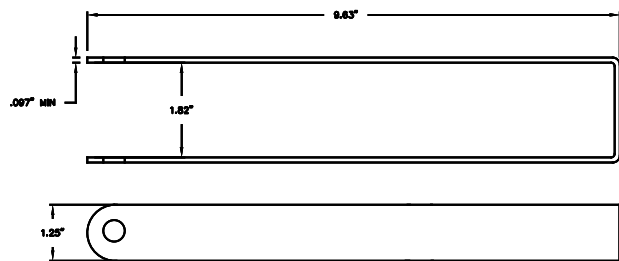
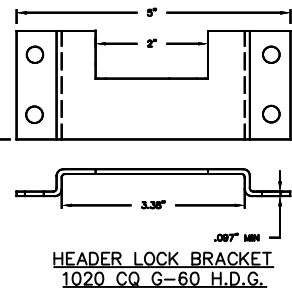
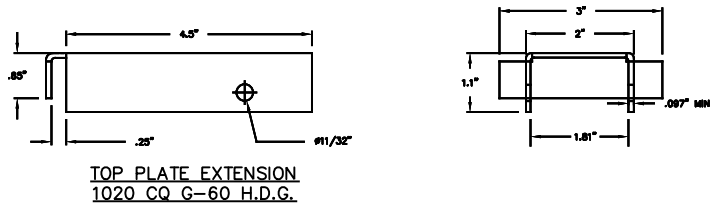
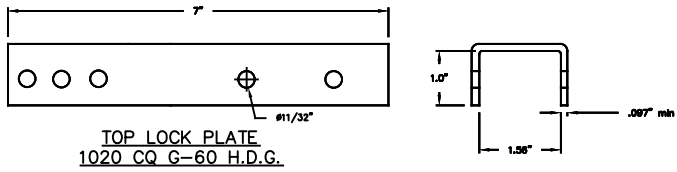


JOHN E. SCATES, PE
2560 KING ARTHUR BLVD #124-54
LEWISVILLE, TX 75056
FL PE 51737
TX PE 56308/F2203

PROFESSIONAL ENGINEER'S SEAL PROVIDED ONLY FOR
VERIFICATION OF WINDLOAD CONSTRUCTIN DETAILS.

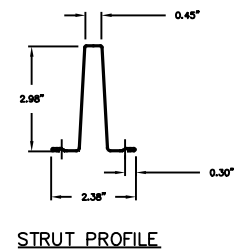
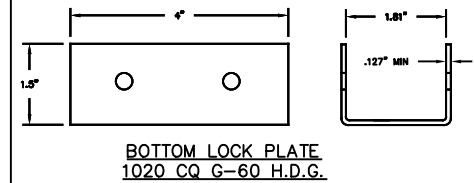
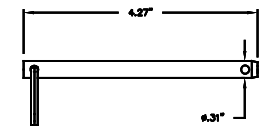
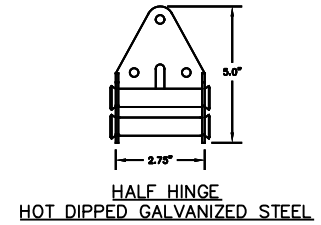
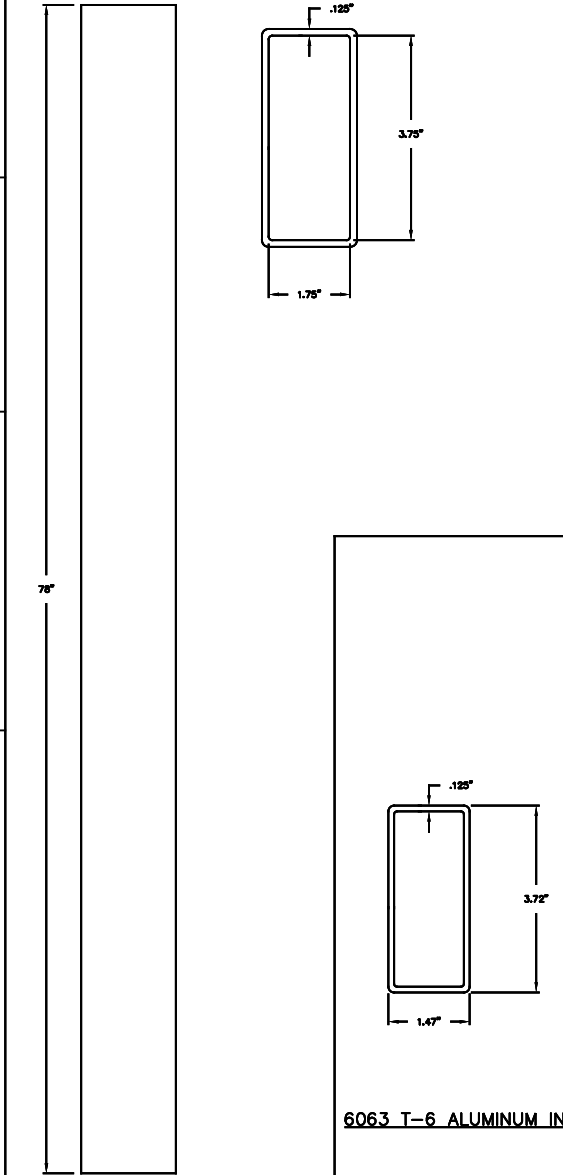
3395 ADDISON DRIVE
PENSACOLA, FLORIDA 32514
(850) 474-9990

STATIC PRESSURE RATINGS		APPROVED SIZES	SCALE: N.T.S.	SIZE: A
DESIGN (PSF):	+46.00/-52.00	MAX WIDTH: 18'-0"	DATE	NAME
TEST (PSF):	+69.00/-78.00	MAX HEIGHT: 8'-0"	DRAWN 2/22/07	GRT
IMPACT/CYCLIC RATED (YES/NO):	YES	MAX SECTION HEIGHT: 21'	CHECKED 1/3/22	TLC
MODEL 8024/8124			SHEET 4 OF 6	
WINDLOAD SPECIFICATION OPTION CODE 1340			DRAWING PART NO.	REV.
			329930	G



JOHN E. SCATES, PE
2560 KING ARTHUR BLVD #124-54
LEWISVILLE, TX 75056
FL PE 51737
TX PE 56308/F2203

PROFESSIONAL ENGINEER'S SEAL PROVIDED ONLY FOR
VERIFICATION OF WINDLOAD CONSTRUCTIN DETAILS.



POST SYSTEM
COMPONENT DETAILS



STATIC PRESSURE RATINGS		APPROVED SIZES		SCALE: N.T.S.		SIZE: A	
DESIGN (PSF):	+46.00/-52.00	MAX WIDTH:	18'-0"	DATE	2/22/07	NAME	GRT
TEST (PSF):	+89.00/-78.00	MAX HEIGHT:	8'-0"	DRAWN	1/3/22	CHECKED	TLC
IMPACT/CYCLIC RATED (YES/NO):	YES	MAX SECTION HEIGHT:	21'	SHEET 5 OF 6			
MODEL 8024/8124				DRAWING PART NO. 329930			
WINDLOAD SPECIFICATION OPTION CODE 1340				REV. G			

POST SYSTEM STORAGE

NOTE: POST SYSTEM SHALL BE STORED IN A CONVENIENT LOCATION AS CLOSE TO GARAGE DOOR AS POSSIBLE.

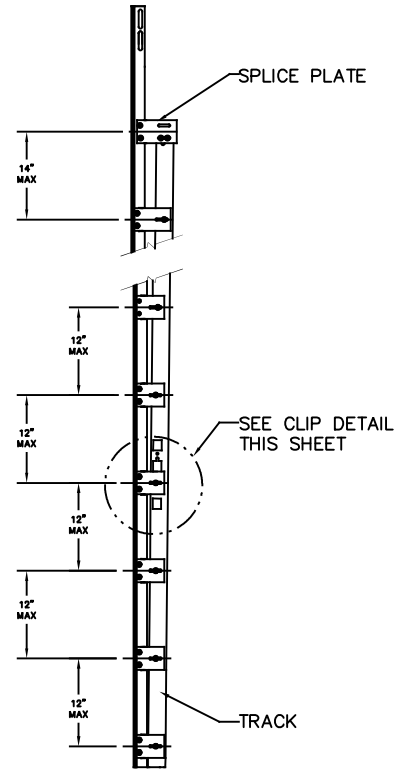
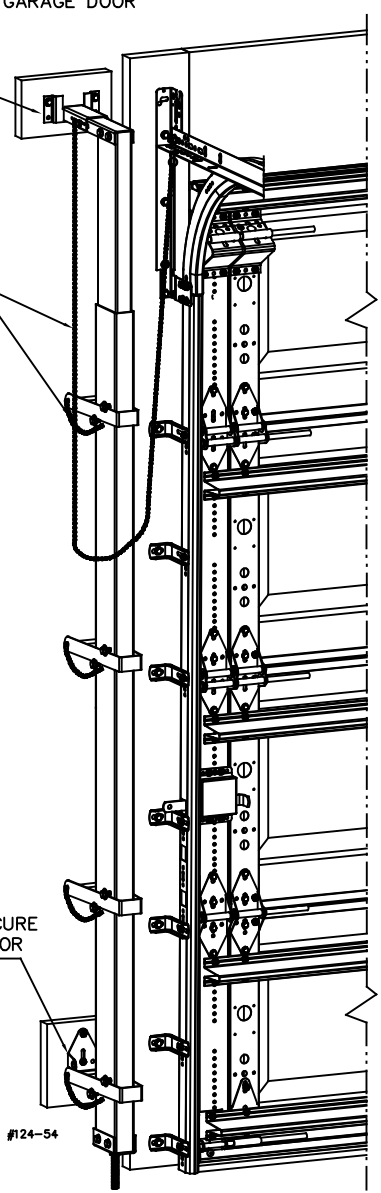
HEADER LOCK BRACKET TO SECURE TOP OF POST FOR STORAGE

CORROSION RESISTANT CHAINS, TYP.

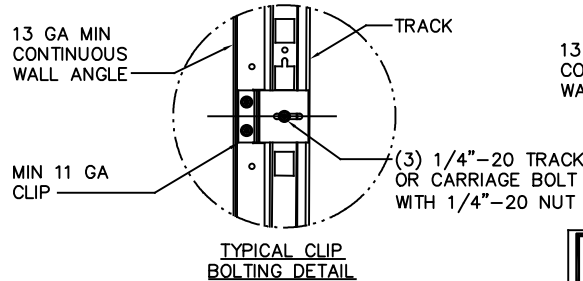
HALF HINGE TO SECURE BOTTOM OF POST FOR STORAGE

JOHN E. SCATES, PE
2560 KING ARTHUR BLVD #124-54
LEWISVILLE, TX 75056
FL PE 51737
TX PE 56308/F2203

PROFESSIONAL ENGINEER'S SEAL PROVIDED ONLY FOR VERIFICATION OF WINDLOAD CONSTRUCTION DETAILS.



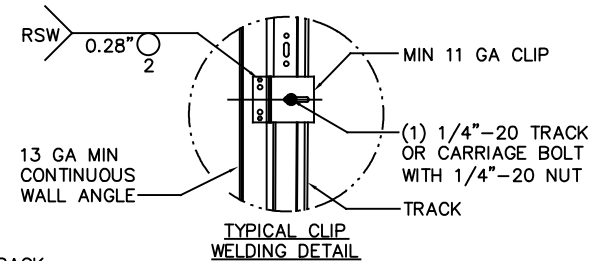
CLIPS TO BE EITHER BOLTED OR WELDED. SEE DETAILS THIS PAGE.



TYPICAL CLIP BOLTING DETAIL

MAX SPACING OF ANCHORS/SCREWS PER JAMB (IN)		
3/8" SIMPSON TITEN HD SCREW ANCHOR TO MINIMUM 2000 PSI CONCRETE ^{NOTE 1}	3/8" SIMPSON TITEN HD SCREW ANCHOR TO MINIMUM 2000 PSI GROUT FILLED CMU ^{NOTE 2}	3/8" X 3" LONG LAG SCREW ^{NOTE 3}
24	24	24

1. BASED ON 3/8" SIMPSON TITEN HEAVY DUTY SCREW ANCHOR WITH A 1" O.D. WASHER INTO CONCRETE WITH A MINIMUM EMBEDMENT DEPTH OF 2-3/4" AND A MINIMUM EDGE DISTANCE OF 2-3/4".
2. BASED ON 3/8" SIMPSON TITEN HEAVY DUTY SCREW ANCHOR WITH A 1" O.D. WASHER INTO GROUT FILLED CMU WITH A MINIMUM EMBEDMENT DEPTH OF 2-3/4", A MINIMUM EDGE DISTANCE OF 4", AND A MINIMUM END DISTANCE OF 4". CONCRETE MASONRY UNITS SHALL CONFORM TO ASTM C90 AND GROUT SHALL CONFORM TO ASTM C476.
3. BASED ON 3/8" DIAMETER X 3" LONG LAG SCREWS WITH 1" O.D. WASHERS WITH A 1-9/32" THREAD PENETRATION INTO SEASONED DRY WOOD SUPPORTING STRUCTURE.
4. PROVIDE QUANTITY OF SCREW ANCHORS OR LAG SCREWS AS REQUIRED TO MAINTAIN MAXIMUM SPACING AS SHOWN IN TABLE WITH A MINIMUM OF THREE (3) SCREW ANCHORS OR LAG SCREWS PER JAMB. SCREW ANCHORS OR LAG SCREWS AT TOP AND BOTTOM OF JAMB SHALL BE PLACED A MAXIMUM OF 6" FROM THE END OF THE JAMB.
5. LOAD PER JAMB CALCULATED TO BE A MAXIMUM OF +190.7/-215.7 LBS PER FOOT.
6. CHART INCLUDES A SAFETY FACTOR OF 4.
7. DOOR JAMB TO BE MINIMUM 2x6 NO. 3 SOUTHERN PINE LUMBER (MIN) MOUNTED DIRECTLY TO SUPPORT STRUCTURE.
8. DESIGN OF THE SUPPORT STRUCTURE SHALL BE THE SOLE RESPONSIBILITY OF THE BUILDING DESIGNER AND SHALL BE DESIGNED FOR THE LOADS LISTED IN NOTE 5.
9. SCREW ANCHORS OR LAG SCREWS SHALL BE INSTALLED PER MANUFACTURER'S WRITTEN INSTRUCTIONS.



TYPICAL CLIP WELDING DETAIL



3395 ADDISON DRIVE
PENSACOLA, FLORIDA 32514
(850) 474-9890

STATIC PRESSURE RATINGS		APPROVED SIZES	SCALE: N.T.S.	SIZE: A
DESIGN (PSF): +46.00/-52.00	MAX WIDTH: 18'-0"	DATE	NAME	
TEST (PSF): +69.00/-78.00	MAX HEIGHT: 8'-0"	DRAWN	GRT	
IMPACT/CYCLIC RATED (YES/NO): YES	MAX SECTION HEIGHT: 21"	CHECKED	TLC	
MODEL 8024/8124			SHEET 6 OF 6	
WINDLOAD SPECIFICATION OPTION CODE 1340			DRAWING PART NO.	REV.
			329930	G

REVISIONS