

**NOTES:**

1. GLAZING OPTION - .125" MINIMUM DSB GLAZING MEETS UNIFORM STATIC DESIGN PRESSURES SHOWN ON THIS DRAWING. GLAZING SHALL HAVE A MAXIMUM HEIGHT OF 6.70" AND A MAXIMUM LENGTH OF 24.00". GLAZING IS NOT IMPACT RESISTANT AND DOES NOT MEET THE REQUIREMENTS FOR WIND-BORNE DEBRIS REGIONS.

2. MINIMUM OF 1" OVERLAP ON BOTH JAMBS REQUIRED TO MEET NEGATIVE DESIGN PRESSURES.

3. SLIDE LOCKS OR OPERATOR REQUIRED.

4. SECTION STEEL TO HAVE THE FOLLOWING MINIMUM THICKNESS:  
TS 200 - 26 GA EXTERIOR, 26 GA INTERIOR  
TS 200-20 - 20 GA EXTERIOR, 27 GA INTERIOR

5. A 22 GA X 2-1/4" X 3-3/4" BACKUP PLATE SHALL BE LOCATED AT EACH INTERMEDIATE HINGE LOCATION.

6. THE DESIGN OF THE SUPPORTING STRUCTURAL ELEMENTS SHALL BE THE RESPONSIBILITY OF THE PROFESSIONAL OF RECORD FOR THE BUILDING OR STRUCTURE AND IN ACCORDANCE WITH CURRENT BUILDING CODES FOR THE LOADS LISTED ON THIS DRAWING.

7. TRACK CLIPS SHALL BE LOCATED WITH CENTERLINE OF BOTTOM CLIP SPACED 10" MAX FROM BOTTOM OF TRACK AND REMAINING TRACK CLIPS SPACED AT 24" O.C. MAX. SPACING BETWEEN TOP TRACK CLIP AND SPLICE PLATE SHALL BE 30" O.C. MAX.

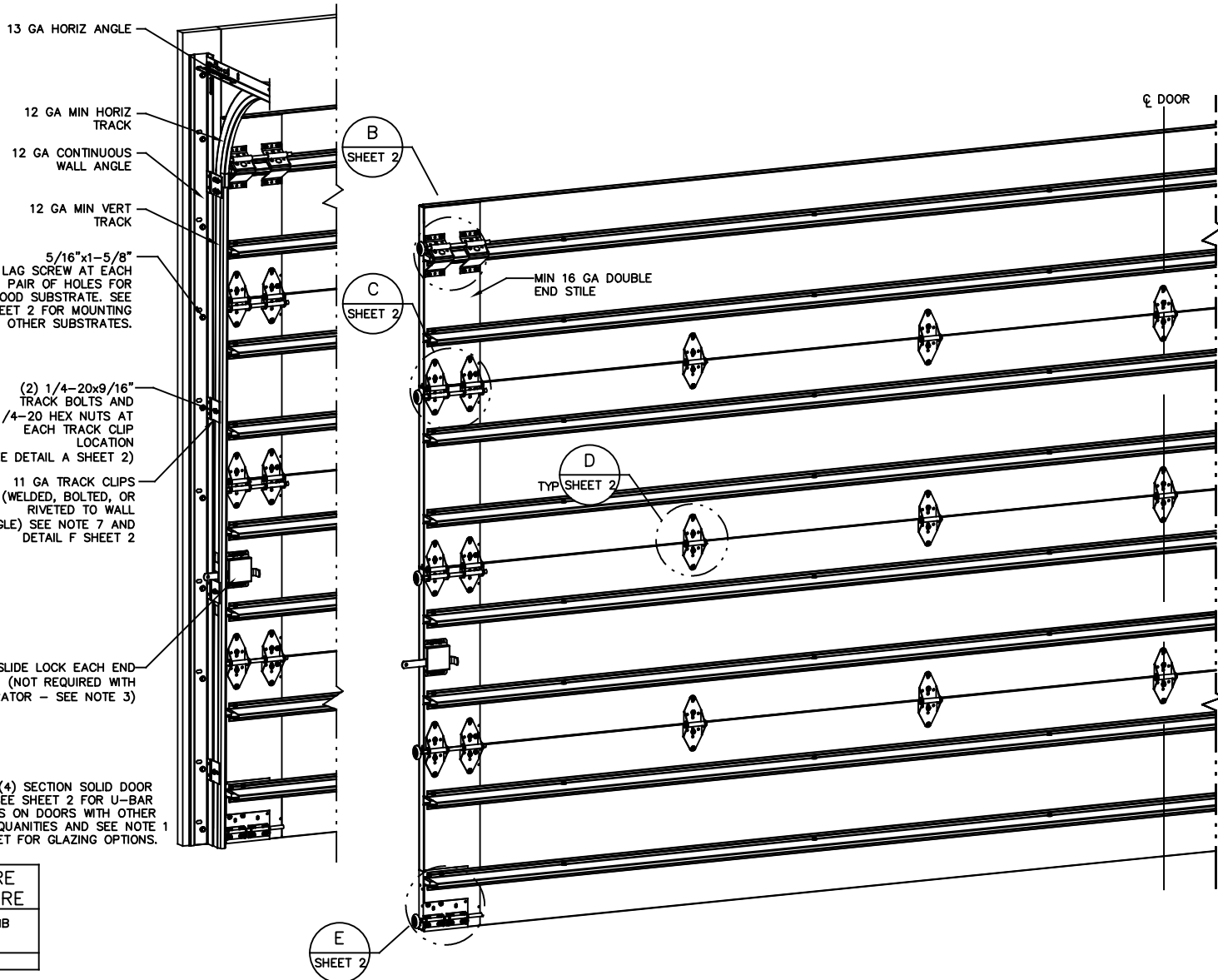
8. WHEN MOUNTING TO WOOD, DOOR JAMB TO BE MINIMUM 2x6 NO. 2 SPF LUMBER OR BETTER. REFER TO JAMB CONNECTION SUPPLEMENT FOR ATTACHMENT TO SUPPORTING STRUCTURE.

- 13 GA HORIZ ANGLE
- 12 GA MIN HORIZ TRACK
- 12 GA CONTINUOUS WALL ANGLE
- 12 GA MIN VERT TRACK
- 5/16"x1-5/8" LAG SCREW AT EACH PAIR OF HOLES FOR WOOD SUBSTRATE. SEE SHEET 2 FOR MOUNTING TO OTHER SUBSTRATES.

- (2) 1/4-20x9/16" TRACK BOLTS AND 1/4-20 HEX NUTS AT EACH TRACK CLIP LOCATION (SEE DETAIL A SHEET 2)
- 11 GA TRACK CLIPS (WELDED, BOLTED, OR RIVETED TO WALL ANGLE) SEE NOTE 7 AND DETAIL F SHEET 2

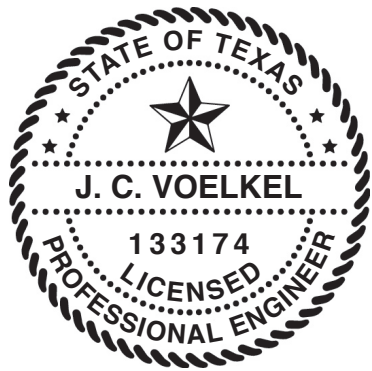
SLIDE LOCK EACH END (NOT REQUIRED WITH OPERATOR - SEE NOTE 3)

NOTE: (4) SECTION SOLID DOOR SHOWN. SEE SHEET 2 FOR U-BAR LOCATIONS ON DOORS WITH OTHER SECTION QUANTITIES AND SEE NOTE 1 THIS SHEET FOR GLAZING OPTIONS.



**SUPERIMPOSED DESIGN PRESSURE LOADS ON SUPPORTING STRUCTURE**

MAX DOOR WIDTH	DOOR HEIGHT	MAX UNIFORM LOAD EACH JAMB (PLF)
24'-2"	ALL	+252.5/-285.2



J. CHRISTIAN VOELKEL, PE  
312 N. WARRINGTON RD. UNIT 1A  
PENSACOLA, FL  
FL PE 77945  
TX PE 133174

PROFESSIONAL ENGINEER'S SEAL PROVIDED ONLY FOR VERIFICATION OF WINDLOAD CONSTRUCTION DETAILS.

**REVISIONS**  
REV - INITIAL RELEASE 07/31/20 TLC  
REV A ADDED IRC/IBC NOTE TLC 9/15/20  
REV B ADDED THIRD PAGE FOR GLAZING INFO TLC 3/12/21

THE DOORS ARE DESIGNED AND MANUFACTURED TO COMPLY WITH THE 2018 IRC AND THE 2018 IBC.

<p>WAYNE DALTON GARAGE DOORS</p> <p>A DIVISION OF OVERHEAD DOOR CORP 3395 ADDISON DRIVE PENSACOLA, FLORIDA 32514 (850) 474-9890</p>	<b>STATIC PRESSURE RATINGS</b> DESIGN (PSF): +20.9/-23.60 TEST (PSF): +31.35/-35.40 IMPACT/CYCLIC RATED (YES/NO): NO		<b>APPROVED SIZES</b> MAX WIDTH: 24'-2" MAX HEIGHT: 24'-1" MAX SECTION HEIGHT: 24"		SCALE: N.T.S. DATE: 6/26/2020 CHECKED: 3/15/21	SIZE: A NAME: TLC TLC
	MODEL TS 200/200-20				SHEET 1 OF 3	
	WINDLOAD SPECIFICATION OPTION CODE 2151				DRAWING PART NO. 365337	
					REV. B	

**NOTES:**

1. GLAZING OPTION - .125" MINIMUM DSB GLAZING MEETS UNIFORM STATIC DESIGN PRESSURES SHOWN ON THIS DRAWING. GLAZING SHALL HAVE A MAXIMUM HEIGHT OF 6.70" AND A MAXIMUM LENGTH OF 24.00". GLAZING IS NOT IMPACT RESISTANT AND DOES NOT MEET THE REQUIREMENTS FOR WIND-BORNE DEBRIS REGIONS.

2. MINIMUM OF 1" OVERLAP ON BOTH JAMBS REQUIRED TO MEET NEGATIVE DESIGN PRESSURES.

3. SLIDE LOCKS OR OPERATOR REQUIRED.

4. SECTION STEEL TO HAVE THE FOLLOWING MINIMUM THICKNESS:  
TS 200 - 26 GA EXTERIOR, 26 GA INTERIOR  
TS 200-20 - 20 GA EXTERIOR, 27 GA INTERIOR

5. A 22 GA X 2-1/4" X 3-3/4" BACKUP PLATE SHALL BE LOCATED AT EACH INTERMEDIATE HINGE LOCATION.

6. THE DESIGN OF THE SUPPORTING STRUCTURAL ELEMENTS SHALL BE THE RESPONSIBILITY OF THE PROFESSIONAL OF RECORD FOR THE BUILDING OR STRUCTURE AND IN ACCORDANCE WITH CURRENT BUILDING CODES FOR THE LOADS LISTED ON THIS DRAWING.

7. TRACK CLIPS SHALL BE LOCATED WITH CENTERLINE OF BOTTOM CLIP SPACED 10" MAX FROM BOTTOM OF TRACK AND REMAINING TRACK CLIPS SPACED AT 24" O.C. MAX. SPACING BETWEEN TOP TRACK CLIP AND SPLICE PLATE SHALL BE 30" O.C. MAX.

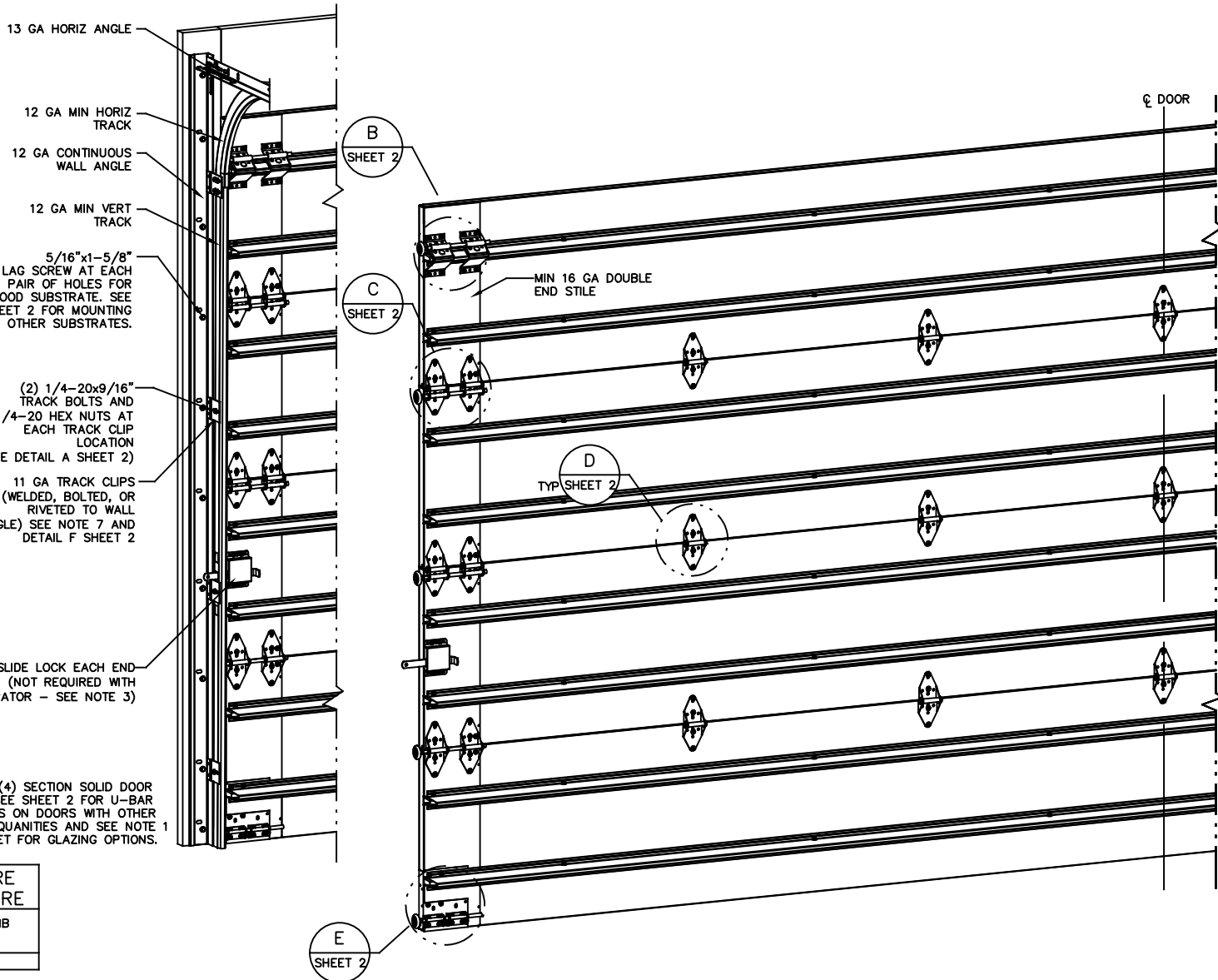
8. WHEN MOUNTING TO WOOD, DOOR JAMB TO BE MINIMUM 2x6 NO. 2 SPF LUMBER OR BETTER. REFER TO JAMB CONNECTION SUPPLEMENT FOR ATTACHMENT TO SUPPORTING STRUCTURE.

- 13 GA HORIZ ANGLE
- 12 GA MIN HORIZ TRACK
- 12 GA CONTINUOUS WALL ANGLE
- 12 GA MIN VERT TRACK
- 5/16"x1-5/8" LAG SCREW AT EACH PAIR OF HOLES FOR WOOD SUBSTRATE. SEE SHEET 2 FOR MOUNTING TO OTHER SUBSTRATES.

- (2) 1/4-20x9/16" TRACK BOLTS AND 1/4-20 HEX NUTS AT EACH TRACK CLIP LOCATION (SEE DETAIL A SHEET 2)
- 11 GA TRACK CLIPS (WELDED, BOLTED, OR RIVETED TO WALL ANGLE) SEE NOTE 7 AND DETAIL F SHEET 2

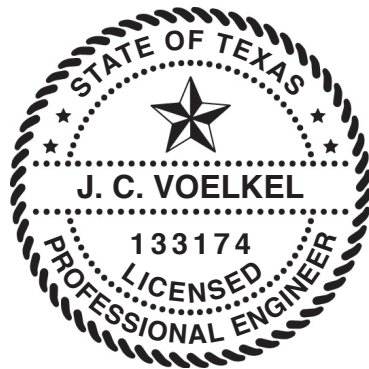
SLIDE LOCK EACH END (NOT REQUIRED WITH OPERATOR - SEE NOTE 3)

NOTE: (4) SECTION SOLID DOOR SHOWN. SEE SHEET 2 FOR U-BAR LOCATIONS ON DOORS WITH OTHER SECTION QUANTITIES AND SEE NOTE 1 THIS SHEET FOR GLAZING OPTIONS.



**SUPERIMPOSED DESIGN PRESSURE LOADS ON SUPPORTING STRUCTURE**

MAX DOOR WIDTH	DOOR HEIGHT	MAX UNIFORM LOAD EACH JAMB (PLF)
24'-2"	ALL	+252.5/-285.2



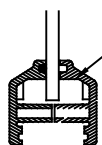
J. CHRISTIAN VOELKEL, PE  
312 N. WARRINGTON RD. UNIT 1A  
PENSACOLA, FL  
FL PE 77945  
TX PE 133174

PROFESSIONAL ENGINEER'S SEAL PROVIDED ONLY FOR VERIFICATION OF WINDLOAD CONSTRUCTION DETAILS.

**REVISIONS**  
REV - INITIAL RELEASE 07/31/20 TLC  
REV A ADDED IRC/IBC NOTE TLC 9/15/20  
REV B ADDED THIRD PAGE FOR GLAZING INFO TLC 3/12/21

THE DOORS ARE DESIGNED AND MANUFACTURED TO COMPLY WITH THE 2018 IRC AND THE 2018 IBC.

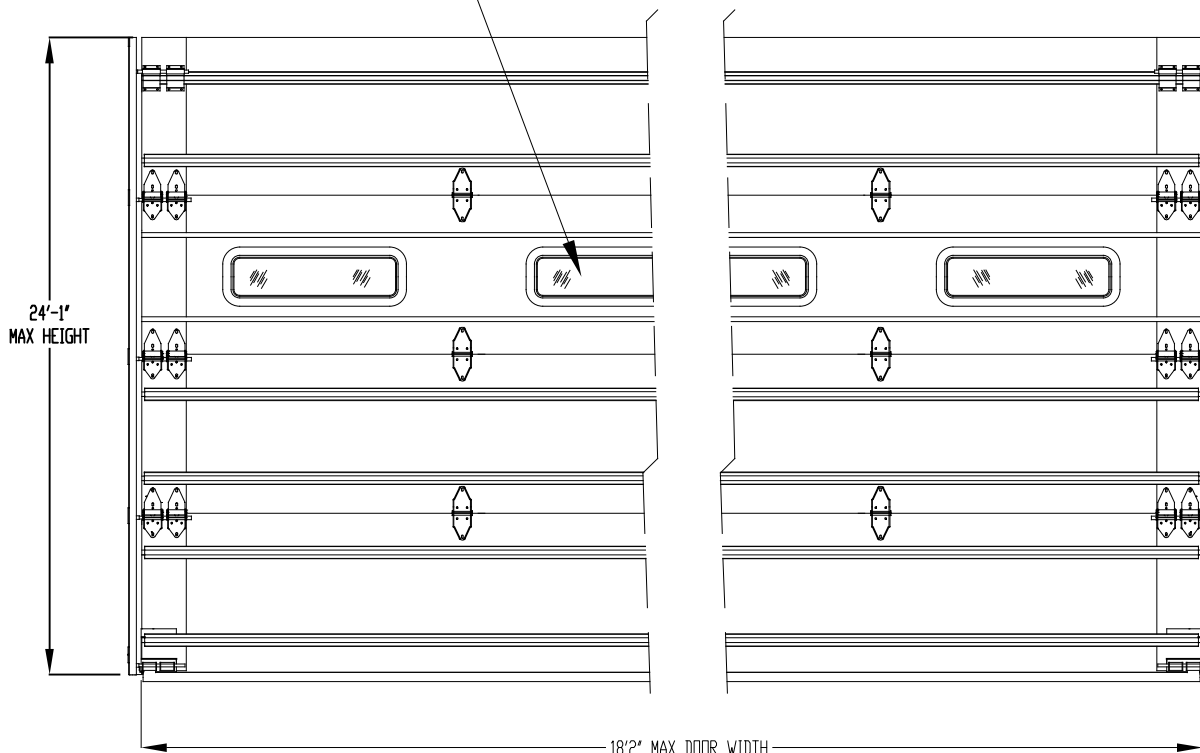
<p><b>Wayne Dalton</b> GARAGE DOORS</p> <p>A DIVISION OF OVERHEAD DOOR CORP 3395 ADDISON DRIVE PENSACOLA, FLORIDA 32514 (850) 474-9890</p>	<b>STATIC PRESSURE RATINGS</b> DESIGN (PSF): +20.9/-23.60 TEST (PSF): +31.35/-35.40 IMPACT/CYCLIC RATED (YES/NO): NO		<b>APPROVED SIZES</b> MAX WIDTH: 24'-2" MAX HEIGHT: 24'-1" MAX SECTION HEIGHT: 24"		SCALE: N.T.S. DATE: 6/26/2020 CHECKED: 3/15/21	SIZE: A NAME: TLC TLC
	MODEL TS 200/200-20				SHEET 1 OF 3	
	WINDLOAD SPECIFICATION OPTION CODE 2151				DRAWING PART NO. 365337 REV. B	



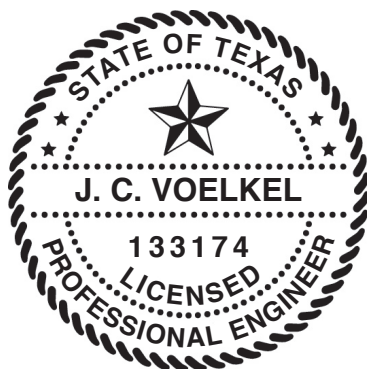
PLASTIC FRAME  
 1/8" ANNEALED DSB GLASS (MIN)  
 DLO= 5 3/4"x22 7/8"  
 MAX (6) LITES PER SECTION  
 (10) #8X2" SHEETMETAL SCREW  
 (1) PER VERTICAL FRAME LEG  
 (4) PER HORIZONTAL FRAME LEG

NON-IMPACT RESISTANT GLAZING OPTION  
 PLACEMENT RESTRICTIONS: SEE NOTE 1

1 OPTIONAL  
 NON-IMPACT RESISTANT  
 GLAZING OPTION



INTERIOR DOOR ELEVATION DEPICTION  
 TO DEMONSTRATE GLAZING PLACEMENT  
 (4) SECTION DOOR SHOWN



J. CHRISTIAN VOELKEL, PE  
 312 N. WARRINGTON RD. UNIT 1A  
 PENSACOLA, FL  
 FL PE 77945  
 TX PE 133174

PROFESSIONAL ENGINEER'S SEAL PROVIDED ONLY FOR  
 VERIFICATION OF WINDLOAD CONSTRUCTION DETAILS.

**Wayne Dalton**  
 GARAGE DOORS

A DIVISION OF OVERHEAD DOOR CORP.  
 3395 ADDISON DRIVE  
 PENSACOLA, FLORIDA 32514  
 (850) 474-9890

STATIC PRESSURE RATINGS		APPROVED SIZES		SCALE: N.T.S.		SIZE: A	
DESIGN (PSF):	+20.90/-23.60	MAX WIDTH:	24'-2"	DATE	NAME		
TEST (PSF):	+31.35/-35.4	MAX HEIGHT:	24'-1"	DRAWN	6/26/2020	TLC	
IMPACT/CYCLIC RATED (YES/NO): NO		MAX SECTION HEIGHT: 24"	CHECKED	3/15/21	TLC		
MODEL TS 200/200-20				SHEET 3 OF 3			
WINDLOAD SPECIFICATION OPTION CODE 2151				DRAWING PART NO.		REV.	
				365337		B	