

NOTES:

1. GLAZING OPTION - .125" MINIMUM DSB GLAZING MEETS UNIFORM STATIC DESIGN PRESSURES SHOWN ON THIS DRAWING. GLAZING SHALL HAVE A MAXIMUM HEIGHT OF 6.70" AND A MAXIMUM LENGTH OF 24.00". GLAZING IS NOT IMPACT RESISTANT AND DOES NOT MEET THE REQUIREMENTS FOR WIND-BORNE DEBRIS REGIONS.

2. MINIMUM OF 1" OVERLAP ON BOTH JAMBS REQUIRED TO MEET NEGATIVE DESIGN PRESSURES.

3. SLIDE LOCKS OR OPERATOR REQUIRED.

4. SECTION STEEL TO HAVE THE FOLLOWING MINIMUM THICKNESS:
TS 200 - 26 GA EXTERIOR, 26 GA INTERIOR
TS 200-20 - 20 GA EXTERIOR, 27 GA INTERIOR

5. A 22 GA X 2-1/4" X 3-3/4" BACKUP PLATE SHALL BE LOCATED AT EACH INTERMEDIATE HINGE LOCATION.

6. THE DESIGN OF THE SUPPORTING STRUCTURAL ELEMENTS SHALL BE THE RESPONSIBILITY OF THE PROFESSIONAL OF RECORD FOR THE BUILDING OR STRUCTURE AND IN ACCORDANCE WITH CURRENT BUILDING CODES FOR THE LOADS LISTED ON THIS DRAWING.

7. TRACK CLIPS SHALL BE LOCATED WITH CENTERLINE OF BOTTOM CLIP SPACED 10" MAX FROM BOTTOM OF TRACK AND REMAINING TRACK CLIPS SPACED AT 24" O.C. MAX. SPACING BETWEEN TOP TRACK CLIP AND SPLICE PLATE SHALL BE 30" O.C. MAX.

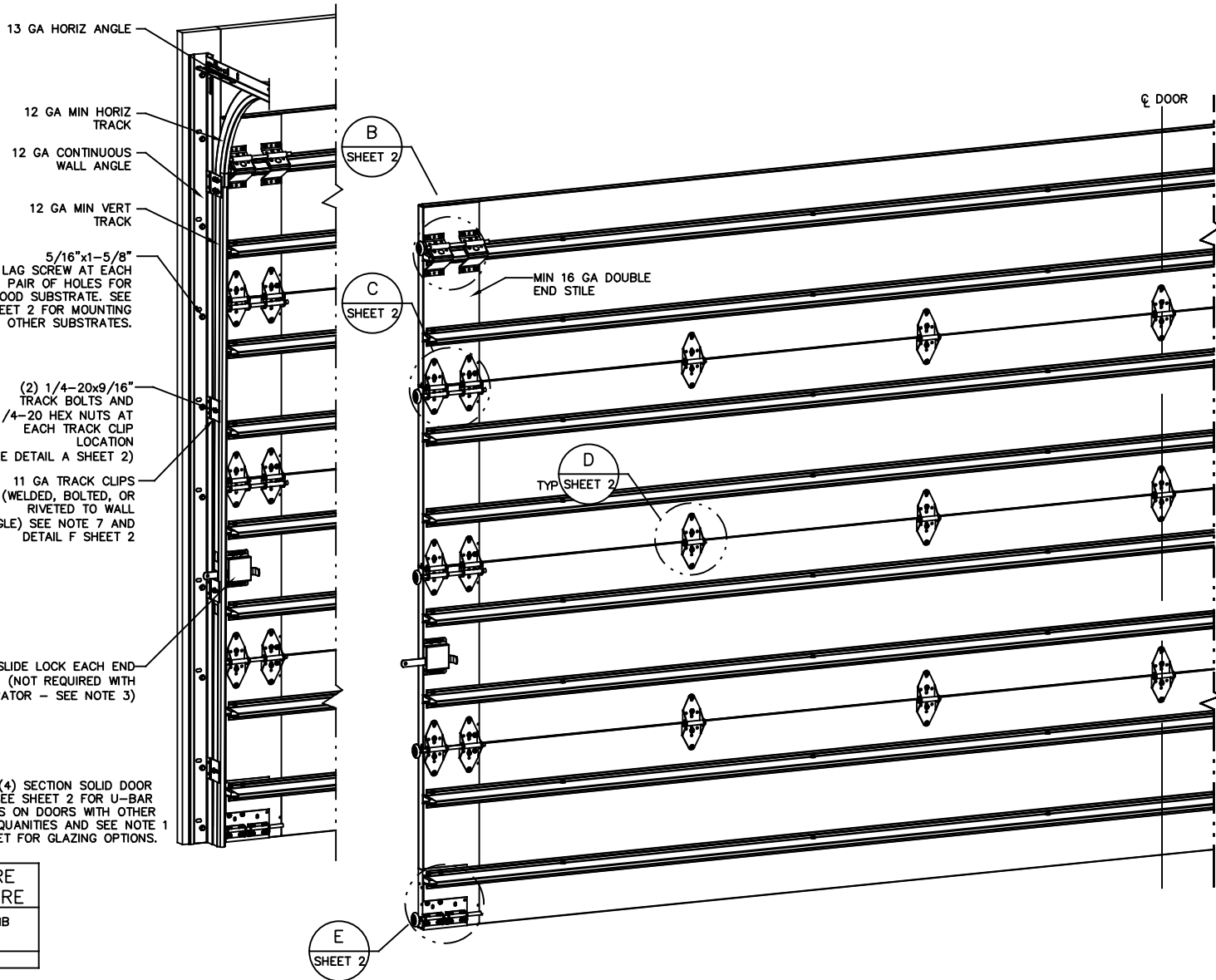
8. WHEN MOUNTING TO WOOD, DOOR JAMB TO BE MINIMUM 2x6 NO. 2 SPF LUMBER OR BETTER. REFER TO JAMB CONNECTION SUPPLEMENT FOR ATTACHMENT TO SUPPORTING STRUCTURE.

- 13 GA HORIZ ANGLE
- 12 GA MIN HORIZ TRACK
- 12 GA CONTINUOUS WALL ANGLE
- 12 GA MIN VERT TRACK
- 5/16"x1-5/8" LAG SCREW AT EACH PAIR OF HOLES FOR WOOD SUBSTRATE. SEE SHEET 2 FOR MOUNTING TO OTHER SUBSTRATES.

- (2) 1/4-20x9/16" TRACK BOLTS AND 1/4-20 HEX NUTS AT EACH TRACK CLIP LOCATION (SEE DETAIL A SHEET 2)
- 11 GA TRACK CLIPS (WELDED, BOLTED, OR RIVETED TO WALL ANGLE) SEE NOTE 7 AND DETAIL F SHEET 2

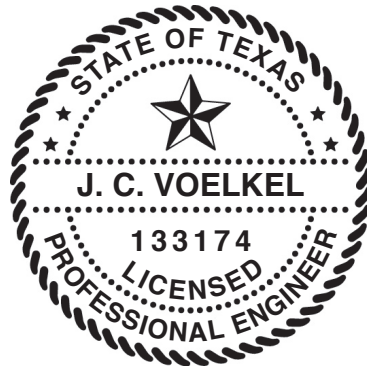
SLIDE LOCK EACH END (NOT REQUIRED WITH OPERATOR - SEE NOTE 3)

NOTE: (4) SECTION SOLID DOOR SHOWN. SEE SHEET 2 FOR U-BAR LOCATIONS ON DOORS WITH OTHER SECTION QUANTITIES AND SEE NOTE 1 THIS SHEET FOR GLAZING OPTIONS.



SUPERIMPOSED DESIGN PRESSURE LOADS ON SUPPORTING STRUCTURE

MAX DOOR WIDTH	DOOR HEIGHT	MAX UNIFORM LOAD EACH JAMB (PLF)
24'-2"	ALL	+169.2/-189.7



J. CHRISTIAN VOELKEL, PE
312 N. WARRINGTON RD. UNIT 1A
PENSACOLA, FL
FL PE 77945
TX PE 133174

PROFESSIONAL ENGINEER'S SEAL PROVIDED ONLY FOR VERIFICATION OF WINDLOAD CONSTRUCTION DETAILS.

THE DOORS ARE DESIGNED AND MANUFACTURED TO COMPLY WITH THE 2018 IRC AND THE 2018 IBC.

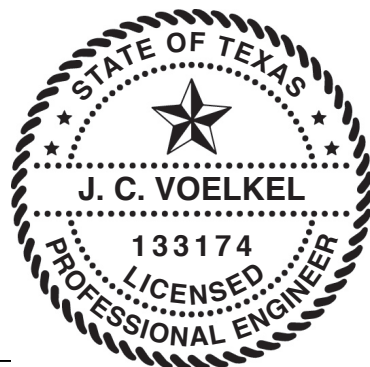
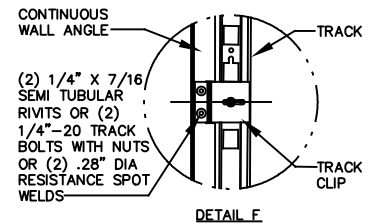
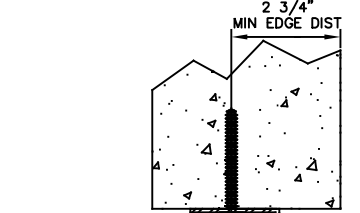
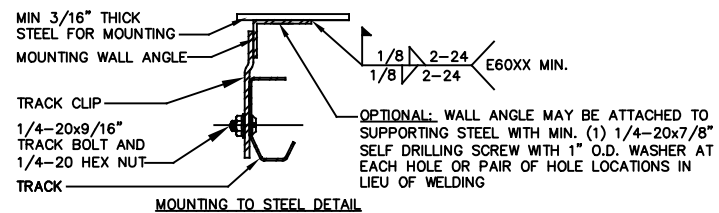
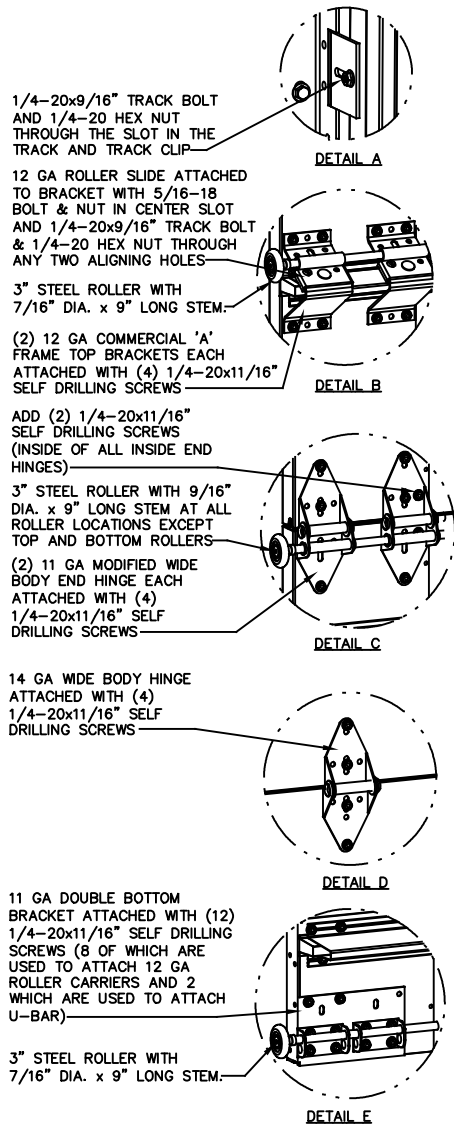
Wayne Dalton
GARAGE DOORS

A DIVISION OF OVERHEAD DOOR CORP
3395 ADDISON DRIVE
PENSACOLA, FLORIDA 32514
(850) 474-9890

STATIC PRESSURE RATINGS		APPROVED SIZES	SCALE: N.T.S.	SIZE: A
DESIGN (PSF):	+14.00/-15.70	MAX WIDTH: 24'-2"	DATE	NAME
TEST (PSF):	+21.00/-23.55	MAX HEIGHT: 24'-1"	DRAWN 9/6/07	GRT
IMPACT/CYCLIC RATED (YES/NO):	NO	MAX SECTION HEIGHT: 24"	CHECKED 3/15/21	TLC
MODEL TS 200/200-20			SHEET 1 OF 3	
WINDLOAD SPECIFICATION OPTION CODE 2150			DRAWING PART NO. 332634	REV. F

REVISIONS

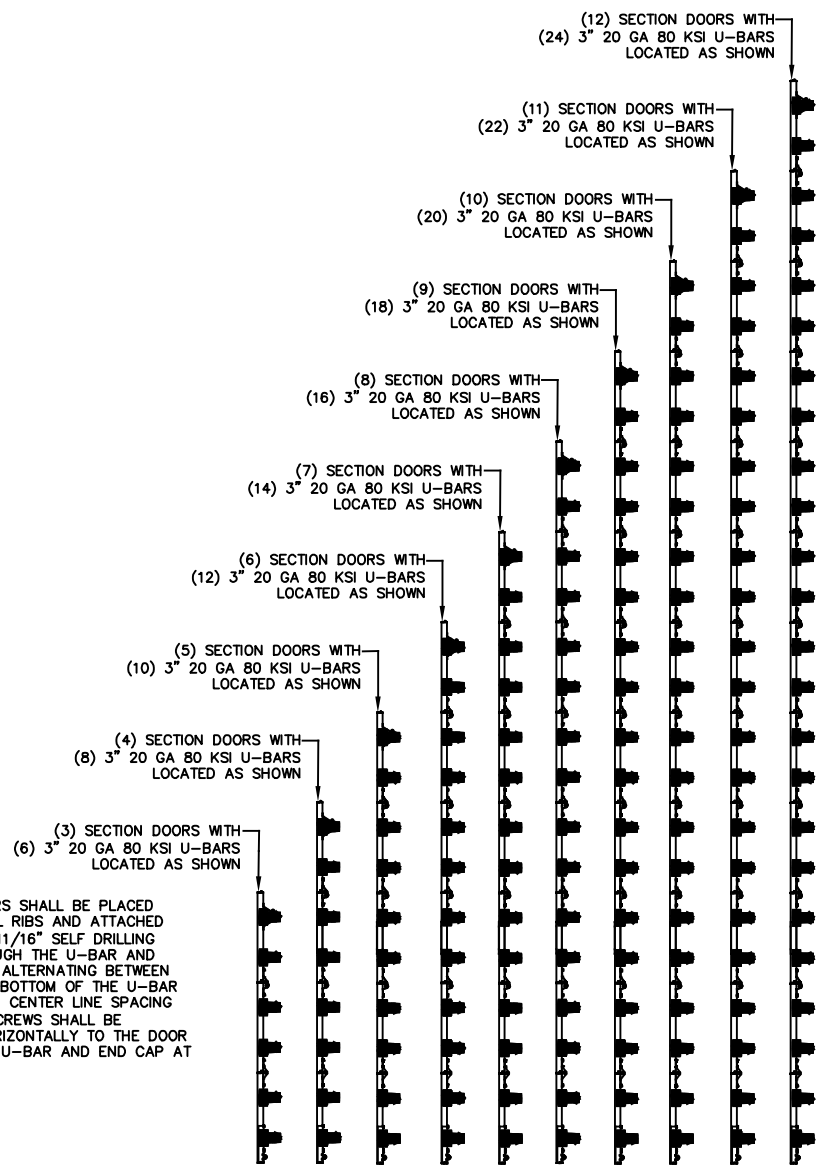
- P1 REMOVED SECTION LIMITATION FOR STANDARD GLAZING GRT 5/9/08
- P2 UPDATED TITLE BLOCK. GRT 3/26/12
- P3 UPDATED TITLE BLOCK ESC 10/18/17
- REV D UPDATED PRINT TO MATCH RECERT TESTING TLC 04/07/20
- REV E ADDED IRC/IBC NOTE TLC 9/15/20
- REV F ADDED THIRD PAGE FOR GLAZING INFO TLC 3/11/21



J. CHRISTIAN VOELKEL, PE
312 N. WARRINGTON RD. UNIT 1A
PENSACOLA, FL
FL PE 77945
TX PE 133174

PROFESSIONAL ENGINEER'S SEAL PROVIDED ONLY FOR VERIFICATION OF WINDLOAD CONSTRUCTION DETAILS.

U-BAR LOCATIONS

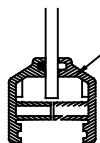


NOTE: U-BARS SHALL BE PLACED OVER INTEGRAL RIBS AND ATTACHED WITH 1/4-20x11/16" SELF DRILLING SCREWS THROUGH THE U-BAR AND INTEGRAL RIB, ALTERNATING BETWEEN THE TOP AND BOTTOM OF THE U-BAR AT A MAXIMUM CENTER LINE SPACING OF 36". (2) SCREWS SHALL BE INSTALLED HORIZONTALLY TO THE DOOR THROUGH THE U-BAR AND END CAP AT EACH END.

Wayne Dalton
GARAGE DOORS

A DIVISION OF OVERHEAD DOOR CORP.
3395 ADDISON DRIVE
PENSACOLA, FLORIDA 32514
(850) 474-9890

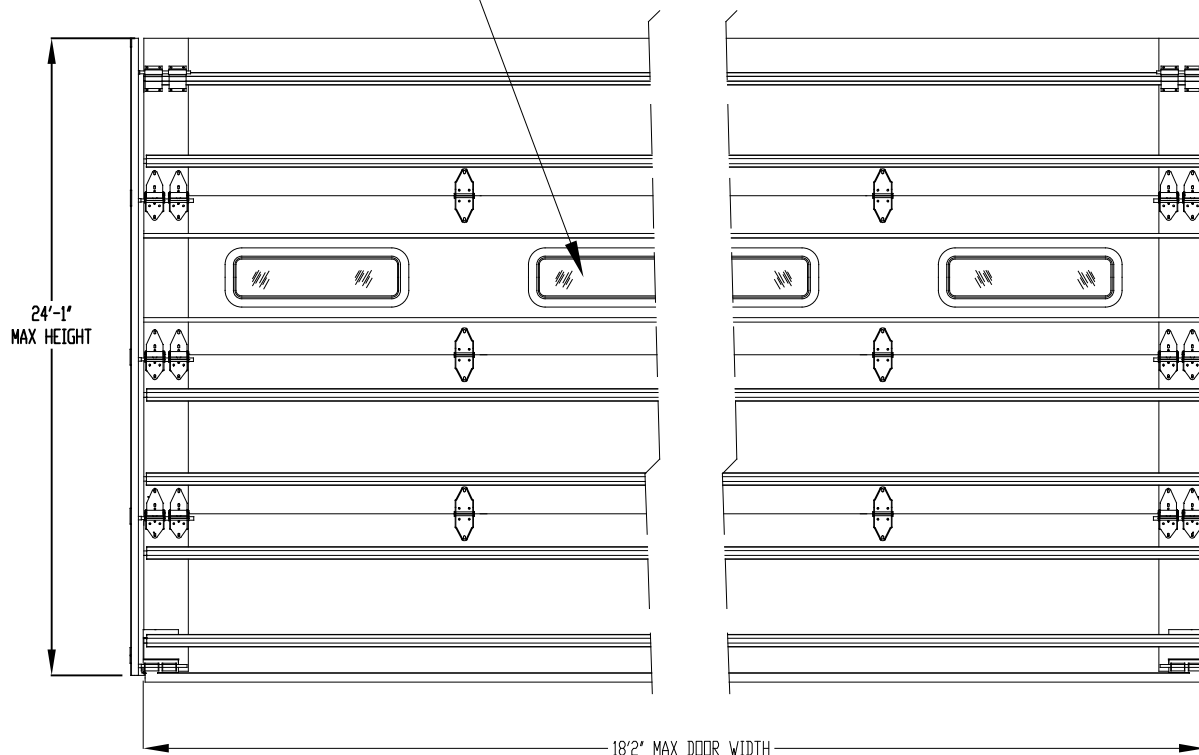
STATIC PRESSURE RATINGS		APPROVED SIZES		SCALE: N.T.S.	SIZE: A
DESIGN (PSF):	+14.00/-15.70	MAX WIDTH:	24'-2"	DATE	NAME
TEST (PSF):	+21.00/-23.55	MAX HEIGHT:	24'-1"	DRAWN	9/6/07
IMPACT/CYCLIC RATED (YES/NO):	NO	MAX SECTION HEIGHT:	24"	CHECKED	3/15/21
MODEL TS 150/200/200-20				SHEET 2 OF 3	
WINDLOAD SPECIFICATION OPTION CODE 2150				DRAWING PART NO.	REV.
				332634	F



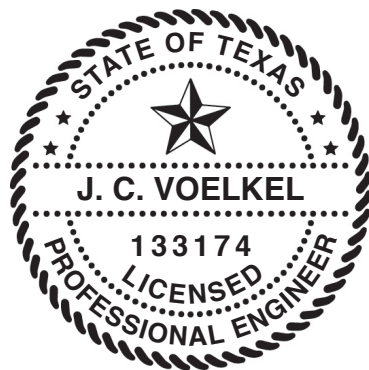
PLASTIC FRAME
 1/8" ANNEALED DSB GLASS (MIN)
 DLO= 5 3/4"x22 7/8"
 MAX (6) LITES PER SECTION
 (10) #8X2" SHEETMETAL SCREW
 (1) PER VERTICAL FRAME LEG
 (4) PER HORIZONTAL FRAME LEG

NON-IMPACT RESISTANT GLAZING OPTION
PLACEMENT RESTRICTIONS: SEE NOTE 1

OPTIONAL
 NON-IMPACT RESISTANT
 GLAZING OPTION



INTERIOR DOOR ELEVATION DEPICTION
 TO DEMONSTRATE GLAZING PLACEMENT
 (4) SECTION DOOR SHOWN



J. CHRISTIAN VOELKEL, PE
 312 N. WARRINGTON RD. UNIT 1A
 PENSACOLA, FL
 FL PE 77945
 TX PE 133174

PROFESSIONAL ENGINEER'S SEAL PROVIDED ONLY FOR
 VERIFICATION OF WINDLOAD CONSTRUCTION DETAILS.

Wayne Dalton
 GARAGE DOORS

A DIVISION OF OVERHEAD DOOR CORP.
 3395 ADDISON DRIVE
 PENSACOLA, FLORIDA 32514
 (850) 474-9890

STATIC PRESSURE RATINGS		APPROVED SIZES		SCALE: N.T.S.	SIZE: A
DESIGN (PSF):	+14.00/-15.70	MAX WIDTH:	24'-2"	DATE	NAME
TEST (PSF):	+21.00/-23.55	MAX HEIGHT:	24'-1"	DRAWN	9/6/07
IMPACT/CYCLIC RATED (YES/NO):	NO	MAX SECTION HEIGHT: 24"	CHECKED	3/15/21	TLC
MODEL TS 150/200/200-20				SHEET 3 OF 3	
WINDLOAD SPECIFICATION OPTION CODE 2150				DRAWING PART NO.	REV.
				332634	F