

NOTES:

1. GLAZING OPTION - .125" MINIMUM DSB ANNEALED GLAZING MEETS UNIFORM STATIC DESIGN PRESSURES SHOWN ON THIS DRAWING. GLAZING SHALL HAVE A MAXIMUM HEIGHT OF 6.70" AND A MAXIMUM LENGTH OF 24.00". GLAZING IS NOT IMPACT RESISTANT AND DOES NOT MEET THE REQUIREMENTS FOR WIND-BORNE DEBRIS REGIONS. GLAZING CAN BE LOCATED IN ANY SECTION EXCEPT THE BOTTOM, AND ONLY ONE GLAZED SECTION PER DOOR.

2. ALUMINUM FULL VIEW OPTION - ALUMINUM FULL VIEW SECTION MAY REPLACE ANY SECTION EXCEPT TOP AND BOTTOM PANELS. ALUMINUM FULL VIEW SECTION SHALL HAVE RAILS AND STILES OF EXTRUDED ALUMINUM ALLOY 6063-T6 WITH A 2-1/4" INTEGRAL FIN WITH .125" MINIMUM DSB ANNEALED GLAZING INSTALLED WITH ALUMINUM RETAINERS IN ORDER TO MEET UNIFORM STATIC DESIGN PRESSURES SHOWN ON THIS DRAWING. GLAZING IS NOT IMPACT RESISTANT AND DOES NOT MEET THE REQUIREMENTS FOR WIND-BORNE DEBRIS REGIONS.

3. MINIMUM OF 1" OVERLAP ON BOTH JAMBS REQUIRED TO MEET NEGATIVE DESIGN PRESSURES.

4. SLIDE LOCK OR OPERATOR REQUIRED.

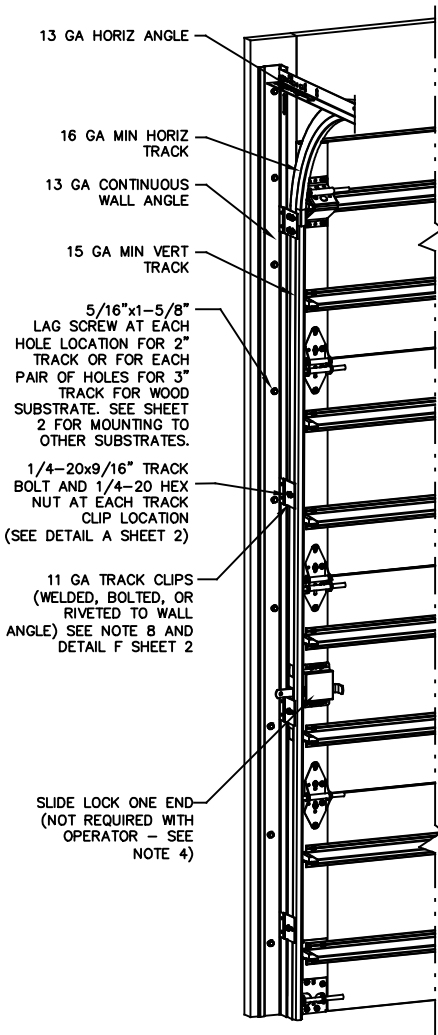
5. SECTION STEEL TO HAVE THE FOLLOWING MINIMUM THICKNESS:
 TS 150 - 29 GA EXTERIOR, 29 GA INTERIOR
 TS 200 - 26 GA EXTERIOR, 26 GA INTERIOR
 TS 200-20 - 20 GA EXTERIOR, 27 GA INTERIOR

6. A 22 GA X 2-1/4" X 3-3/4" BACKUP PLATE SHALL BE LOCATED AT EACH INTERMEDIATE HINGE LOCATION.

7. THE DESIGN OF THE SUPPORTING STRUCTURAL ELEMENTS SHALL BE THE RESPONSIBILITY OF THE PROFESSIONAL OF RECORD FOR THE BUILDING OR STRUCTURE AND IN ACCORDANCE WITH CURRENT BUILDING CODES FOR THE LOADS LISTED ON THIS DRAWING.

8. TRACK CLIPS SHALL BE LOCATED WITH CENTERLINE OF BOTTOM CLIP SPACED 10" MAX FROM BOTTOM OF TRACK AND REMAINING TRACK CLIPS SPACED AT 24" O.C. MAX. SPACING BETWEEN TOP TRACK CLIP AND SPLICE PLATE SHALL BE 30" O.C. MAX.

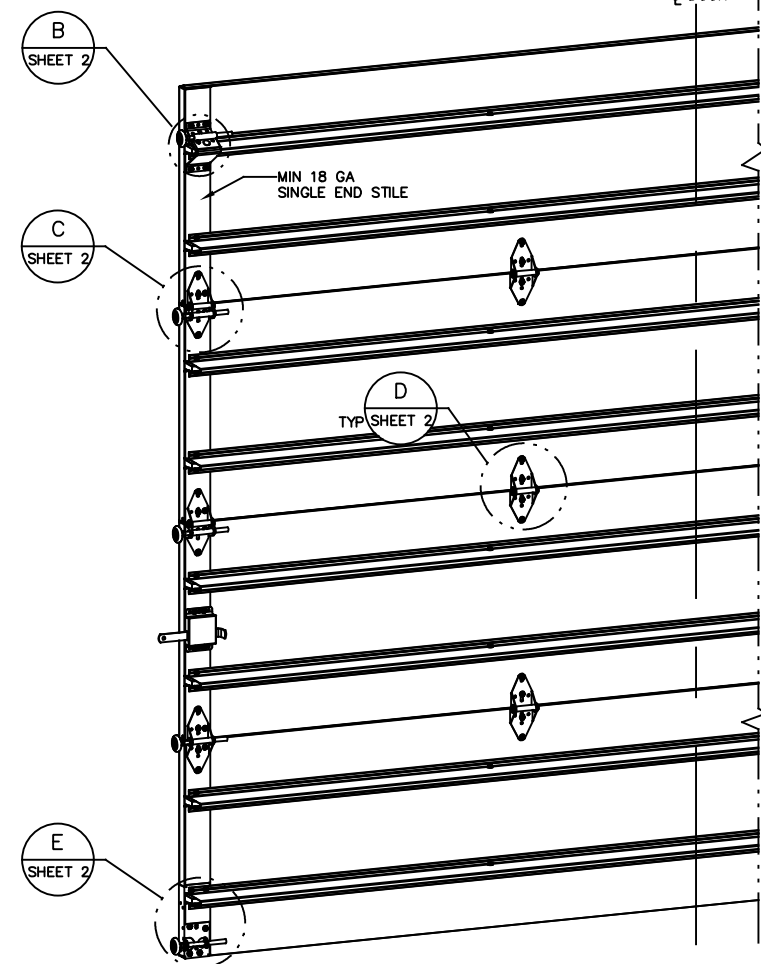
9. WHEN MOUNTING TO WOOD, DOOR JAMB TO BE MINIMUM 2x6 NO. 2 SPF LUMBER OR BETTER. REFER TO JAMB CONNECTION SUPPLEMENT FOR ATTACHMENT TO SUPPORTING STRUCTURE.



NOTE: (4) SECTION SOLID DOOR SHOWN. SEE SHEET 2 FOR U-BAR LOCATIONS ON DOORS WITH OTHER SECTION QUANTITIES AND SEE NOTES 1 AND 2 THIS SHEET FOR GLAZING OPTIONS.

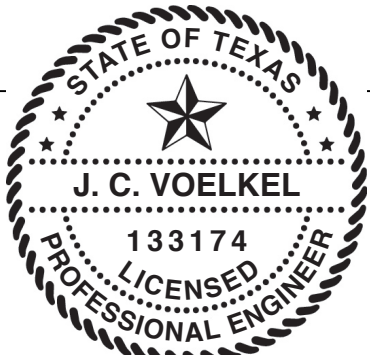
SUPERIMPOSED DESIGN PRESSURE LOADS ON SUPPORTING STRUCTURE

MAX DOOR WIDTH	DOOR HEIGHT	MAX UNIFORM LOAD EACH JAMB (PLF)
12'-2"	ALL	+172.8/-195.9



REVISIONS

- REV - INITIAL RELEASE 07/31/20 TLC
- REV A ADDED IRC/IBC NOTE TLC 9/15/20
- REV B ADDED THIRD PAGE FOR GLAZING INFO TLC 3/12/21

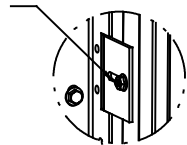


J. CHRISTIAN VOELKEL, PE
 312 N. WARRINGTON RD., UNIT 1A
 PENSACOLA, FL
 FL PE 77945
 TX PE 133174
 PROFESSIONAL ENGINEER'S SEAL PROVIDED ONLY FOR VERIFICATION OF WINDLOAD CONSTRUCTION DETAILS.

THE DOORS ARE DESIGNED AND MANUFACTURED TO COMPLY WITH THE 2018 IRC AND THE 2018 IBC.

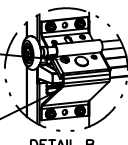
<p>WAYNE DALTON GARAGE DOORS</p> <p>A DIVISION OF OVERHEAD DOOR CORP. 3395 ADDISON DRIVE PENSACOLA, FLORIDA 32514 (850) 474-9890</p>	STATIC PRESSURE RATINGS DESIGN (PSF): +28.40/-32.20 TEST (PSF): +42.60/-48.30 IMPACT/CYCLIC RATED (YES/NO): YES		APPROVED SIZES MAX WIDTH: 12'-2" MAX HEIGHT: 24'-1" MAX SECTION HEIGHT: 24"		SCALE: N.T.S.	SIZE: A
	DATE: 7/31/20		DRAWN: 3/12/21		NAME: TLC	CHECKED: TLC
	MODEL TS 150/200/200-20				SHEET 1 OF 3	
	WINDLOAD SPECIFICATION OPTION CODE 2122				DRAWING PART NO. 365375	

1/4-20x9/16" TRACK BOLT AND 1/4-20 HEX NUT THROUGH THE SLOT IN THE TRACK AND TRACK CLIP



DETAIL A

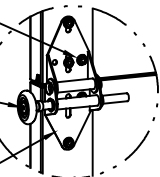
12 GA ROLLER SLIDE ATTACHED TO BRACKET WITH 5/16-18 BOLT & NUT IN CENTER SLOT AND 1/4-20x9/16" TRACK BOLT & 1/4-20 HEX NUT THROUGH ANY TWO ALIGNING HOLES



DETAIL B

12 GA COMMERCIAL 'A' FRAME TOP BRACKET ATTACHED WITH (4) 1/4-20x11/16" SELF DRILLING SCREWS

ADD (2) 1/4-20x11/16" SELF DRILLING SCREWS (INSIDE OF ALL END HINGES)

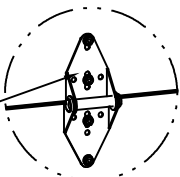


DETAIL C

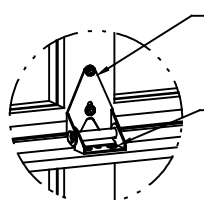
2" STEEL ROLLER WITH 5-1/8" STEM

14 GA WIDE BODY END HINGE TO ATTACH SECTIONS ONE AND TWO.
13 GA WIDE BODY END HINGE TO ATTACH REMAINING SECTIONS. FOR ALL, ATTACH WITH (4) 1/4-20x11/16" SELF DRILLING SCREWS

14 GA WIDE BODY HINGE ATTACHED WITH (4) 1/4-20x11/16" SELF DRILLING SCREWS

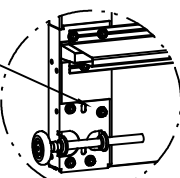


SOLID SECTION



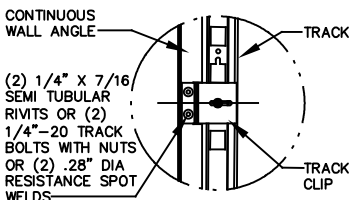
AFV SECTION

11 GA BOTTOM BRACKET ATTACHED WITH (6) 1/4-20x11/16" SELF DRILLING SCREWS

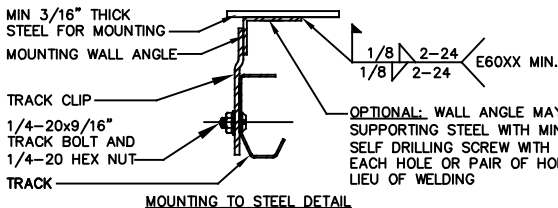


DETAIL E

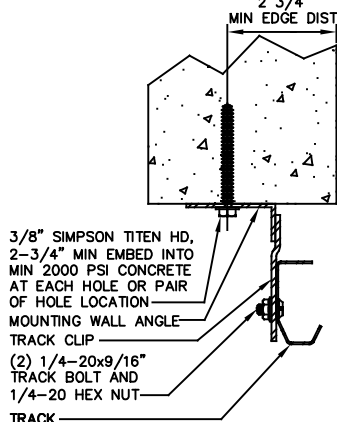
DETAIL D



DETAIL F



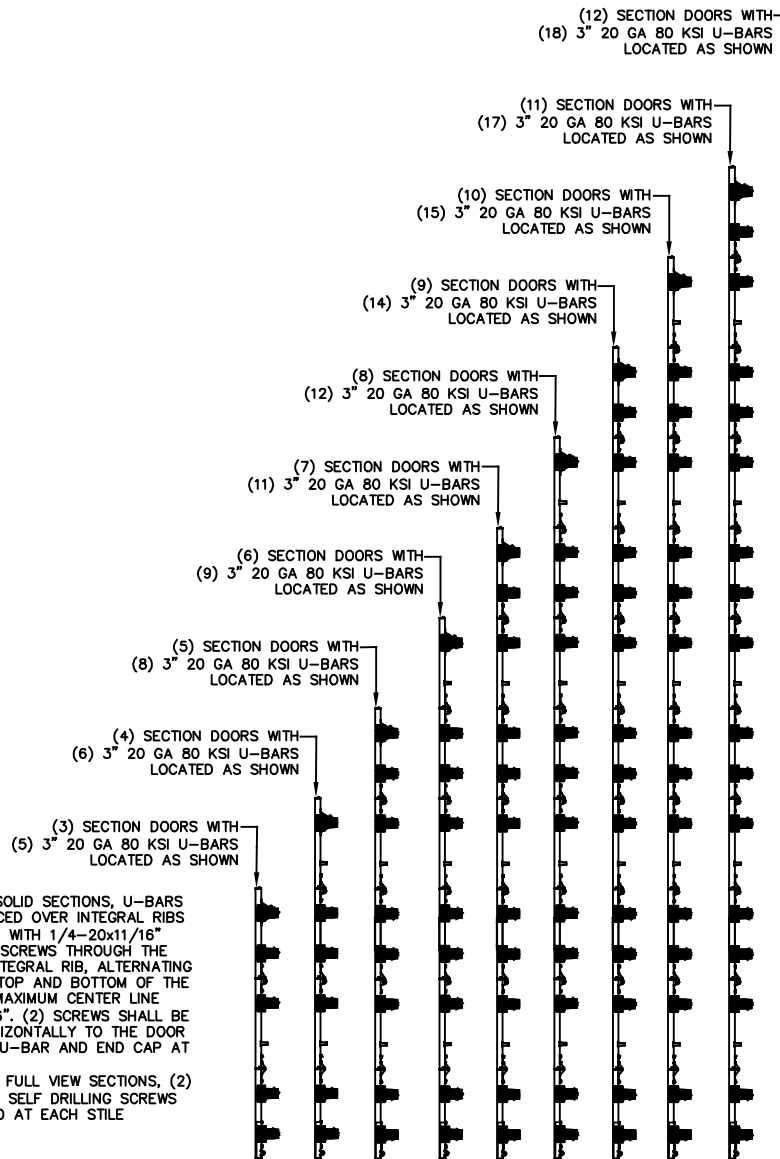
MOUNTING TO STEEL DETAIL



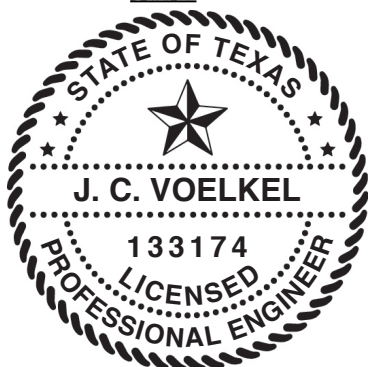
CONCRETE MOUNTING DETAIL

14 GA WIDE BODY HALF HINGE ATTACHED WITH (2) 1/4-20x11/16" SELF DRILLING SCREWS (UPPER HALF)
(2) 1/4x1/2" CARRIAGE BOLTS AND 1/4" FLANGE NUTS (LOWER HALF)

U-BAR LOCATIONS



NOTE: FOR SOLID SECTIONS, U-BARS SHALL BE PLACED OVER INTEGRAL RIBS AND ATTACHED WITH 1/4-20x11/16" SELF DRILLING SCREWS THROUGH THE U-BAR AND INTEGRAL RIB, ALTERNATING BETWEEN THE TOP AND BOTTOM OF THE U-BAR AT A MAXIMUM CENTER LINE SPACING OF 36". (2) SCREWS SHALL BE INSTALLED HORIZONTALLY TO THE DOOR THROUGH THE U-BAR AND END CAP AT EACH END.
FOR ALUMINUM FULL VIEW SECTIONS, (2) 1/4-20x11/16" SELF DRILLING SCREWS SHALL BE USED AT EACH STILE LOCATION.



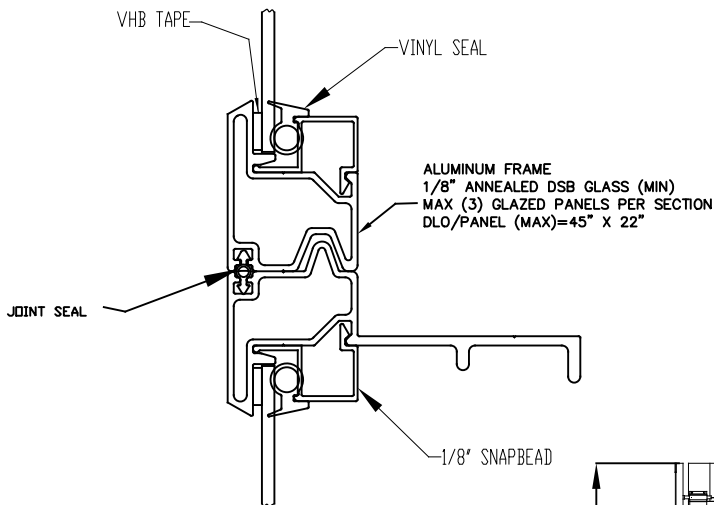
J. CHRISTIAN VOELKEL, PE
312 N. WARRINGTON RD., UNIT 1A
PENSACOLA, FL
FL PE 77945
TX PE 133174

PROFESSIONAL ENGINEER'S SEAL PROVIDED ONLY FOR VERIFICATION OF WINDLOAD CONSTRUCTION DETAILS.

Wayne Dalton
GARAGE DOORS

A DIVISION OF OVERHEAD DOOR CORP.
3395 ADDISON DRIVE
PENSACOLA, FLORIDA 32514
(850) 474-9890

STATIC PRESSURE RATINGS		APPROVED SIZES		SCALE: N.T.S.		SIZE: A	
DESIGN (PSF):	+28.40/-32.20	MAX WIDTH:	12'-2"	DATE	NAME		
TEST (PSF):	+42.60/-48.30	MAX HEIGHT:	24'-1"	DRAWN	TLC		
IMPACT/CYCLIC RATED (YES/NO):	YES	MAX SECTION HEIGHT:	24"	CHECKED	TLC		
MODEL TS 150/200/200-20				SHEET 2 OF 3			
WINDLOAD SPECIFICATION OPTION CODE 2122				DRAWING PART NO.		REV.	
				365375		B	

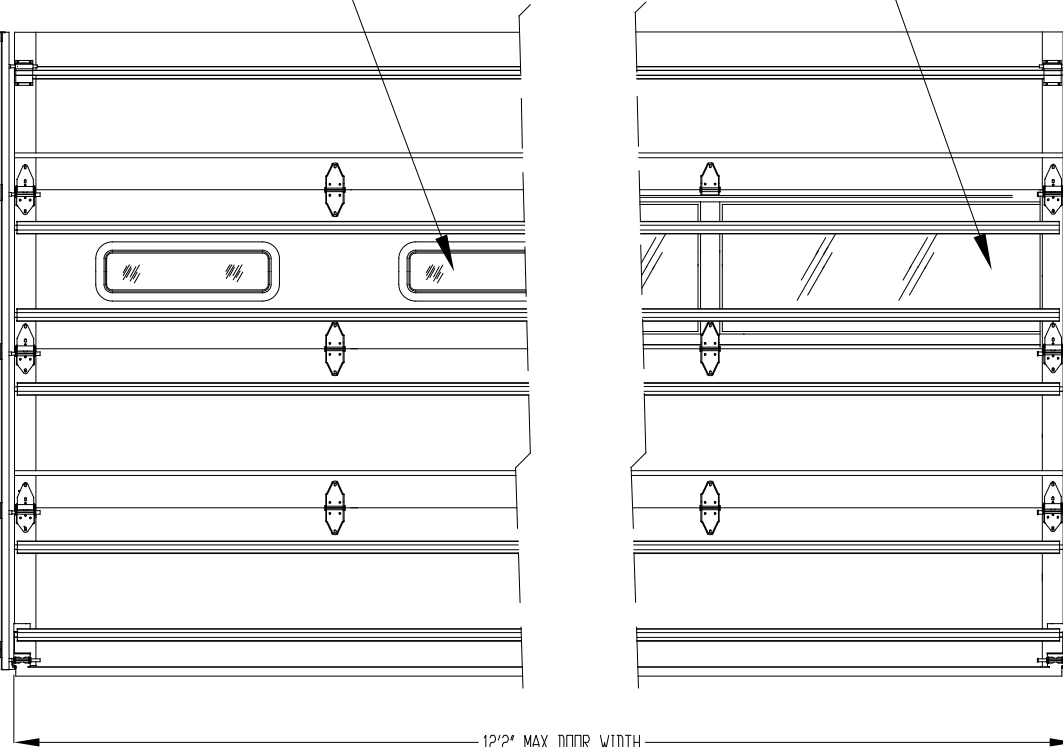


ALUMINUM FULL VIEW 1/8" GLAZING OPTION
 PLACEMENT RESTRICTIONS: SEE NOTE 2

1 OPTIONAL
 NON-IMPACT RESISTANT
 GLAZING OPTION

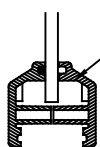
2 OPTIONAL
 NON-IMPACT RESISTANT
 FULL VIEW SECTION

24'-1"
 MAX HEIGHT



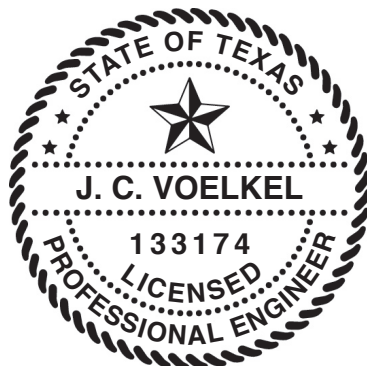
12'-2" MAX DOOR WIDTH

INTERIOR DOOR ELEVATION DEPICTION
 TO DEMONSTRATE GLAZING PLACEMENT
 (4) SECTION DOOR SHOWN



NON-IMPACT RESISTANT GLAZING OPTION
 LOCATION RESTRICTIONS: SEE NOTE 1

PLASTIC FRAME
 1/8" ANNEALED DSB GLASS (MIN)
 DLO= 5 3/4"x22 7/8"
 MAX (3) LITES PER SECTION
 (10) #8X2" SHEETMETAL SCREW
 (1) PER VERTICAL FRAME LEG
 (4) PER HORIZONTAL FRAME LEG



J. CHRISTIAN VOELKEL, PE
 312 N. WARRINGTON RD., UNIT 1A
 PENSACOLA, FL
 FL PE 77945
 TX PE 133174

PROFESSIONAL ENGINEER'S SEAL PROVIDED ONLY FOR
 VERIFICATION OF WINDLOAD CONSTRUCTION DETAILS.

Wayne Dalton
 GARAGE DOORS

A DIVISION OF OVERHEAD DOOR CORP.
 3395 ADDISON DRIVE
 PENSACOLA, FLORIDA 32514
 (850) 474-9890

STATIC PRESSURE RATINGS		APPROVED SIZES	SCALE: N.T.S.	SIZE: A
DESIGN (PSF):	+28.40/-32.20	MAX WIDTH: 12'-2"	DATE	NAME
TEST (PSF):	+42.60/-48.30	MAX HEIGHT: 24'-1"	DRAWN	TLC
IMPACT/CYCLIC RATED (YES/NO):	YES	MAX SECTION HEIGHT: 24"	CHECKED	TLC
MODEL TS 150/200/200-20			SHEET 3 OF 3	
WINDLOAD SPECIFICATION OPTION CODE 2122			DRAWING PART NO.	REV.
			365375	B