

**NOTES:**

1. GLAZING OPTION - .125" MINIMUM DSB ANNEALED GLAZING MEETS UNIFORM STATIC DESIGN PRESSURES SHOWN ON THIS DRAWING. GLAZING SHALL HAVE A MAXIMUM HEIGHT OF 6.70" AND A MAXIMUM LENGTH OF 24.00". GLAZING IS NOT IMPACT RESISTANT AND DOES NOT MEET THE REQUIREMENTS FOR WIND-BORNE DEBRIS REGIONS. GLAZING CAN BE LOCATED IN ANY SECTION EXCEPT THE BOTTOM, AND ONLY ONE GLAZED SECTION PER DOOR.

2. ALUMINUM FULL VIEW OPTION - ALUMINUM FULL VIEW SECTION MAY REPLACE ANY SECTION EXCEPT TOP AND BOTTOM PANELS. ALUMINUM FULL VIEW SECTION SHALL HAVE RAILS AND STILES OF EXTRUDED ALUMINUM ALLOY 6063-T6 WITH .125" MINIMUM DSB ANNEALED GLAZING INSTALLED WITH ALUMINUM RETAINERS IN ORDER TO MEET UNIFORM STATIC DESIGN PRESSURES SHOWN ON THIS DRAWING. GLAZING IS NOT IMPACT RESISTANT AND DOES NOT MEET THE REQUIREMENTS FOR WIND-BORNE DEBRIS REGIONS.

3. MINIMUM OF 1" OVERLAP ON BOTH JAMBS REQUIRED TO MEET NEGATIVE DESIGN PRESSURES.

4. SLIDE LOCK OR OPERATOR REQUIRED.

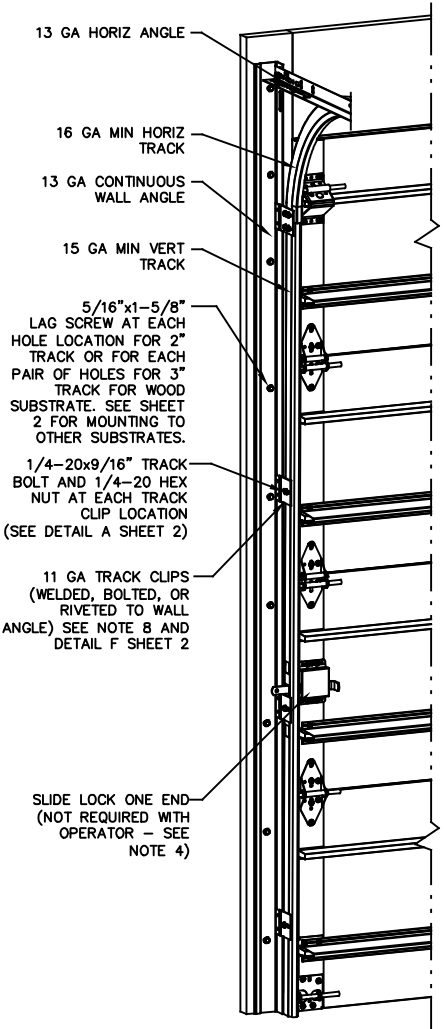
5. SECTION STEEL TO HAVE THE FOLLOWING MINIMUM THICKNESS:  
 TS 150 - 29 GA EXTERIOR, 29 GA INTERIOR  
 TS 200 - 26 GA EXTERIOR, 26 GA INTERIOR  
 TS 200-20 - 20 GA EXTERIOR, 27 GA INTERIOR

6. A 22 GA X 2-1/4" X 3-3/4" BACKUP PLATE SHALL BE LOCATED AT EACH INTERMEDIATE HINGE LOCATION.

7. THE DESIGN OF THE SUPPORTING STRUCTURAL ELEMENTS SHALL BE THE RESPONSIBILITY OF THE PROFESSIONAL OF RECORD FOR THE BUILDING OR STRUCTURE AND IN ACCORDANCE WITH CURRENT BUILDING CODES FOR THE LOADS LISTED ON THIS DRAWING.

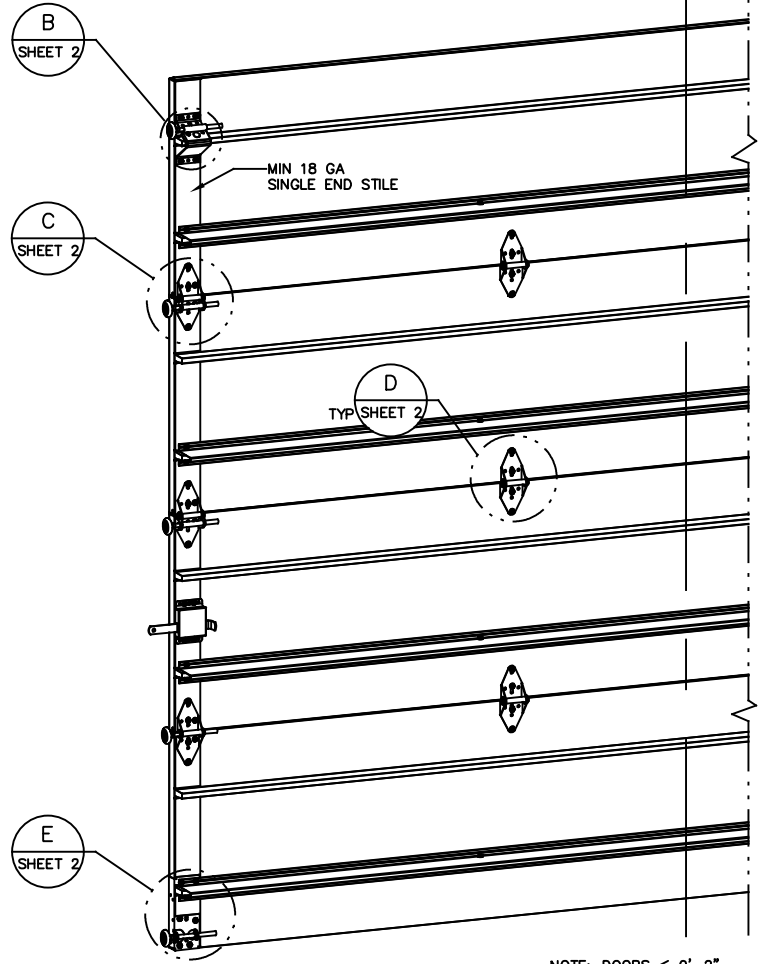
8. TRACK CLIPS SHALL BE LOCATED WITH CENTERLINE OF BOTTOM CLIP SPACED 10" MAX FROM BOTTOM OF TRACK AND REMAINING TRACK CLIPS SPACED AT 24" O.C. MAX. SPACING BETWEEN TOP TRACK CLIP AND SPLICE PLATE SHALL BE 30" O.C. MAX.

9. WHEN MOUNTING TO WOOD, DOOR JAMB TO BE MINIMUM 2x6 NO. 2 SPF LUMBER OR BETTER. REFER TO JAMB CONNECTION SUPPLEMENT FOR ATTACHMENT TO SUPPORTING STRUCTURE.



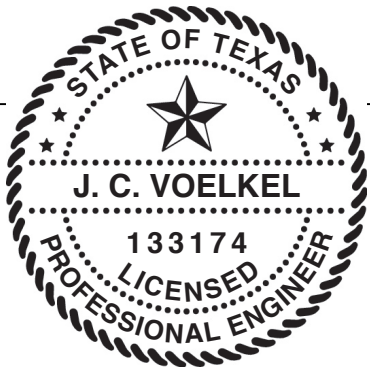
NOTE: (4) SECTION SOLID DOOR SHOWN. SEE SHEET 2 FOR U-BAR LOCATIONS ON DOORS WITH OTHER SECTION QUANTITIES AND SEE NOTES 1 AND 2 THIS SHEET FOR GLAZING OPTIONS.

SUPERIMPOSED DESIGN PRESSURE LOADS ON SUPPORTING STRUCTURE		
MAX DOOR WIDTH	DOOR HEIGHT	MAX UNIFORM LOAD EACH JAMB (PLF)
10'-2"	ALL	+165.7/-187.6



NOTE: DOORS ≤ 9'-2" IN WIDTH ONLY REQUIRE ONE CENTER HINGE.

REVISIONS
P1 REMOVED SECTION LIMITATION FOR STANDARD GLAZING GRT 5/9/08
P2 UPDATED TITLE BLOCK. GRT 3/26/12
P3 UPDATED TITLE BLOCK ESC 10/18/17
REV D UPDATED PRINT TO MATCH RECERT TESTING TLC 04/07/20
REV E ADDED IRC/IBC NOTE TLC 9/15/20
REV F ADDED THIRD PAGE FOR GLAZING INFO TLC 3/11/21



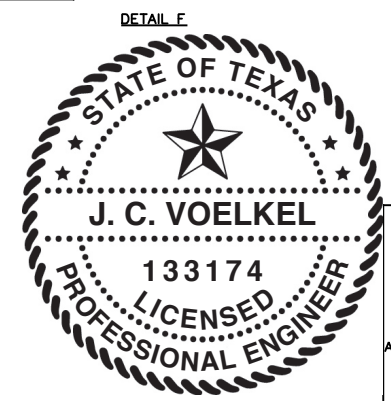
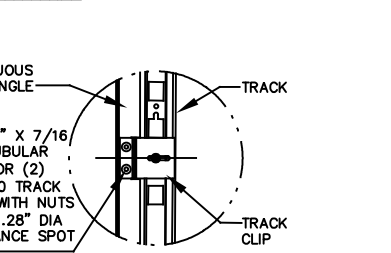
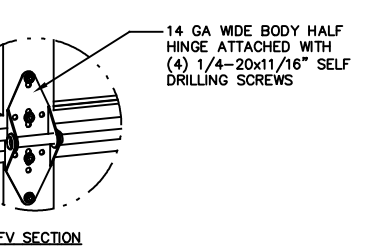
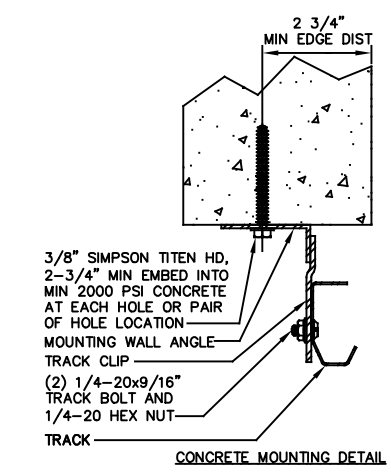
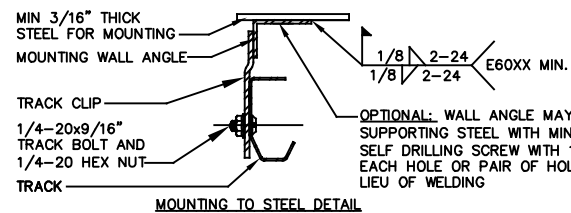
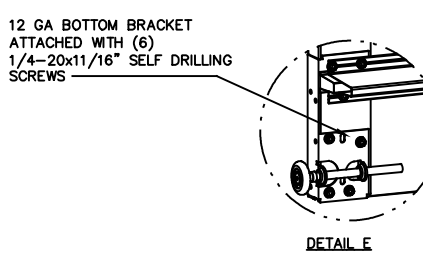
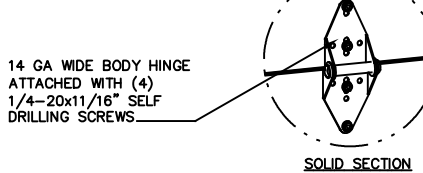
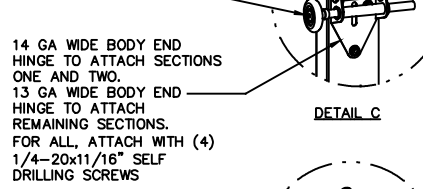
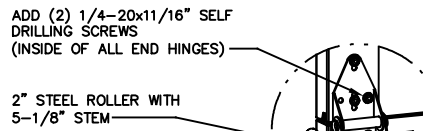
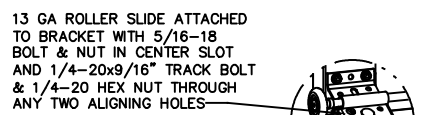
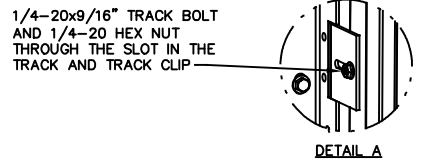
J. CHRISTIAN VOELKEL, PE  
 312 N. WARRINGTON RD. UNIT 1A  
 PENSACOLA, FL  
 FL PE 77945  
 TX PE 133174

PROFESSIONAL ENGINEER'S SEAL PROVIDED ONLY FOR VERIFICATION OF WINDLOAD CONSTRUCTION DETAILS.

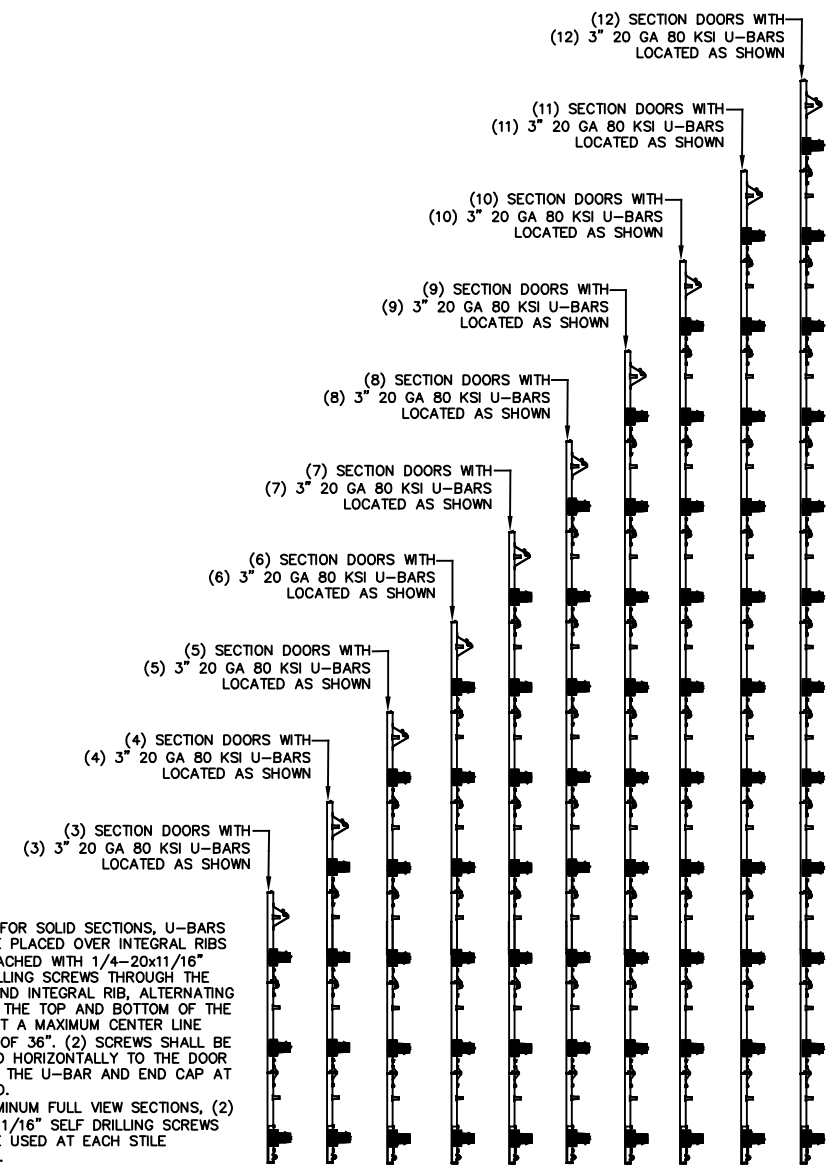
THE DOORS ARE DESIGNED AND MANUFACTURED TO COMPLY WITH THE 2018 IRC AND THE 2018 IBC.

<p>Wayne Dalton GARAGE DOORS</p>	STATIC PRESSURE RATINGS		APPROVED SIZES	SCALE: N.T.S.	SIZE: A
	DESIGN (PSF):	+32.60/-36.90	MAX WIDTH: 10'-2"	DATE	NAME
	TEST (PSF):	+48.90/-55.35	MAX HEIGHT: 24'-1"	DRAWN	GRT
	IMPACT/CYCLIC RATED (YES/NO):	YES	MAX SECTION HEIGHT: 24"	CHECKED	TLC
MODEL TS 150/200/200-20			SHEET 1 OF 3		
WINDLOAD SPECIFICATION OPTION CODE 2113			DRAWING PART NO.	REV.	
			332626	F	

A DIVISION OF OVERHEAD DOOR CORP.  
 3395 ADDISON DRIVE  
 PENSACOLA, FLORIDA 32514  
 (850) 474-9890



U-BAR LOCATIONS



NOTE: FOR SOLID SECTIONS, U-BARS SHALL BE PLACED OVER INTEGRAL RIBS AND ATTACHED WITH 1/4-20x11/16" SELF DRILLING SCREWS THROUGH THE U-BAR AND INTEGRAL RIB, ALTERNATING BETWEEN THE TOP AND BOTTOM OF THE U-BAR AT A MAXIMUM CENTER LINE SPACING OF 36". (2) SCREWS SHALL BE INSTALLED HORIZONTALLY TO THE DOOR THROUGH THE U-BAR AND END CAP AT EACH END.  
FOR ALUMINUM FULL VIEW SECTIONS, (2) 1/4-20x11/16" SELF DRILLING SCREWS SHALL BE USED AT EACH STILE LOCATION.

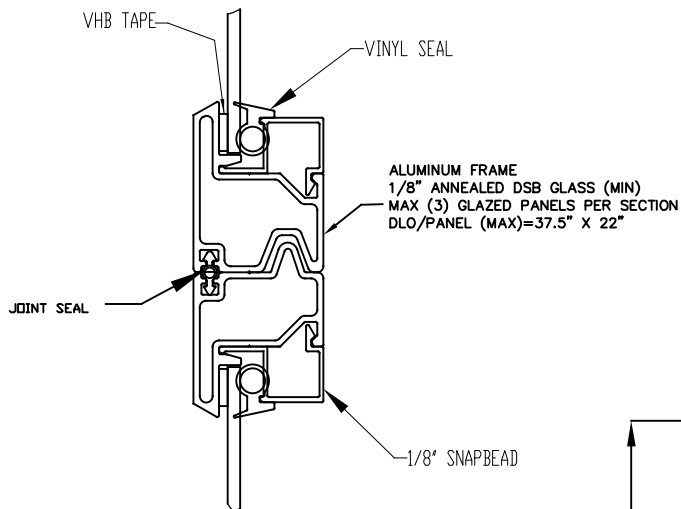
J. CHRISTIAN VOELKEL, PE  
312 N. WARRINGTON RD. UNIT 1A  
PENSACOLA, FL  
FL PE 77945  
TX PE 133174

PROFESSIONAL ENGINEER'S SEAL PROVIDED ONLY FOR VERIFICATION OF WINDLOAD CONSTRUCTION DETAILS.

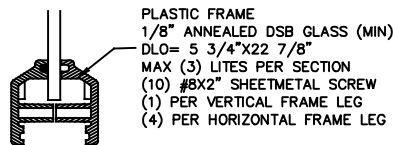


A DIVISION OF OVERHEAD DOOR CORP.  
3395 ADDISON DRIVE  
PENSACOLA, FLORIDA 32514  
(850) 474-9890

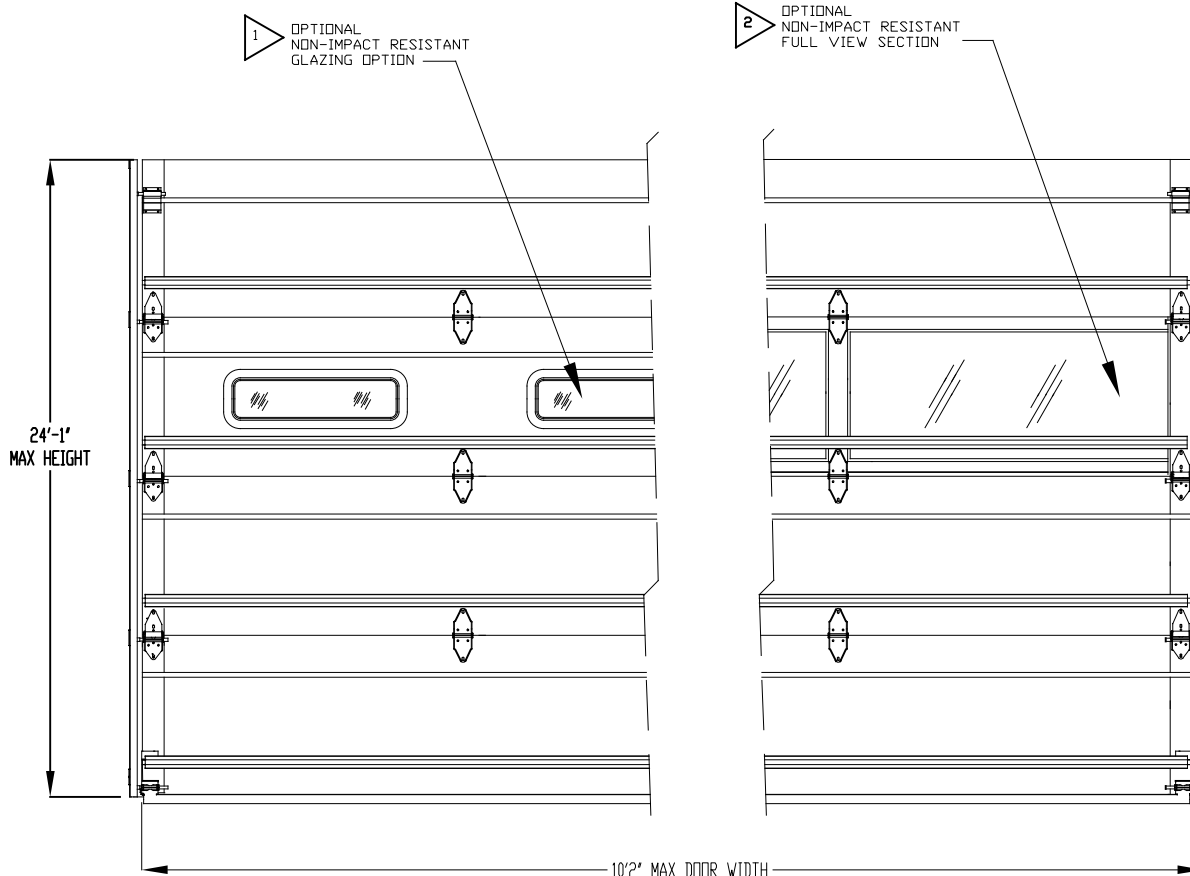
STATIC PRESSURE RATINGS		APPROVED SIZES		SCALE: N.T.S.	SIZE: A
DESIGN (PSF):	+32.60/-36.90	MAX WIDTH:	10'-2"	DATE	NAME
TEST (PSF):	+48.90/-55.35	MAX HEIGHT:	24'-1"	DRAWN	GRT
IMPACT/CYCLIC RATED (YES/NO):	YES	MAX SECTION HEIGHT:	24"	CHECKED	TLC
MODEL TS 150/200/200-20				SHEET 2 OF 3	
WINDLOAD SPECIFICATION OPTION CODE 2113				DRAWING PART NO.	REV.
				332626	F



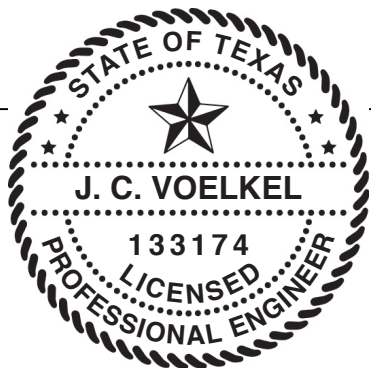
ALUMINUM FULL VIEW 1/8" GLAZING OPTION  
PLACEMENT RESTRICTIONS: SEE NOTE 2



NON-IMPACT RESISTANT GLAZING OPTION  
LOCATION RESTRICTIONS: SEE NOTE 1



INTERIOR DOOR ELEVATION DEPICTION  
TO DEMONSTRATE GLAZING PLACEMENT  
(4) SECTION DOOR SHOWN



J. CHRISTIAN VOELKEL, PE  
312 N. WARRINGTON RD. UNIT 1A  
PENSACOLA, FL  
FL PE 77945  
TX PE 133174

PROFESSIONAL ENGINEER'S SEAL PROVIDED ONLY FOR  
VERIFICATION OF WINDLOAD CONSTRUCTION DETAILS.

**Wayne Dalton**  
GARAGE DOORS

A DIVISION OF OVERHEAD DOOR CORP.  
3395 ADDISON DRIVE  
PENSACOLA, FLORIDA 32514  
(850) 474-9890

STATIC PRESSURE RATINGS		APPROVED SIZES		SCALE: N.T.S.	SIZE: A
DESIGN (PSF):	+32.60/-36.90	MAX WIDTH:	10'-2"	DATE	NAME
TEST (PSF):	+48.90/-55.35	MAX HEIGHT:	24'-1"	DRAWN	GRT
IMPACT/CYCLIC RATED (YES/NO):	YES	MAX SECTION HEIGHT:	24"	CHECKED	TLC
MODEL TS 150/200/200-20				SHEET 3 OF 3	
WINDLOAD SPECIFICATION OPTION CODE 2113				DRAWING PART NO.	REV.
				332626	F