

**SECTION B-B**

| P.S.F. TABLE |        |                 |          |               |          |
|--------------|--------|-----------------|----------|---------------|----------|
| DOOR SIZE    |        | DESIGN PRESSURE |          | TEST PRESSURE |          |
| WIDTH        | HEIGHT | POSITIVE        | NEGATIVE | POSITIVE      | NEGATIVE |
| 9'-0"        | 7'-0"  | +22.9           | -26.4    | +34.4         | -39.6    |

DOORS SHOWN ON THIS DRAWING HAVE BEEN DEMONSTRATED TO WITHSTAND THE PRESSURES LISTED IN THE TABLE ABOVE VIA TESTING TO ANSI/DASMA 108-05/12/17.

DETERMINATION OF SUITABILITY FOR SPECIFIC SITES IS THE RESPONSIBILITY OF OTHERS.

John E Scates PE  
2560 King Arthur Blvd #124-54  
Lewisville, TX 75056  
TX-PE 56308, F-2203  
FL-PE-51737

Professional Engineer's seal provided only for verification of windload construction details.

NOTE: ALL NON-DESCRIPTIVE FASTENERS SHOWN TO BE 1/4"-20 X 5/8" HEX BOLTS & NUTS OR 1/4" X 3/4" LONG HEX HEAD SHEET METAL SCREWS.

NOTE: GLAZING DOES NOT SATISFY IMPACT DEBRIS REQUIREMENTS IN FBC

FL 15080 9 X 7

|      |                          |             |
|------|--------------------------|-------------|
| E    | ROLLER NOTES, PE ADDRESS | 5/28/20     |
| D    | REV LOGO & ADDRESS       | 1/28/13     |
| C    | 12/15/11                 | RLB         |
| B    | 2866                     | 3/10/08 RLB |
| A    | 2848                     | 11/1/07 RLB |
|      | 2810                     | 3-8-07 RLB  |
| REV. | E.C.N.                   | DATE        |
|      |                          | APPROV.     |

**W WINDSOR DOOR**

5800 SCOTT HAMILTON DR.  
LITTLE ROCK, AR 72209  
(501) 562-1872

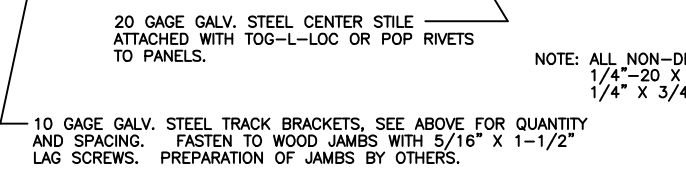
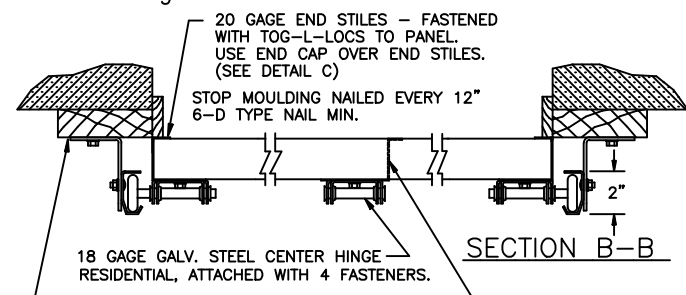
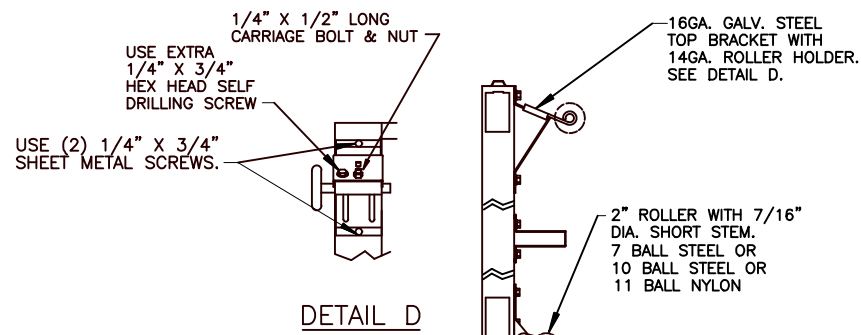
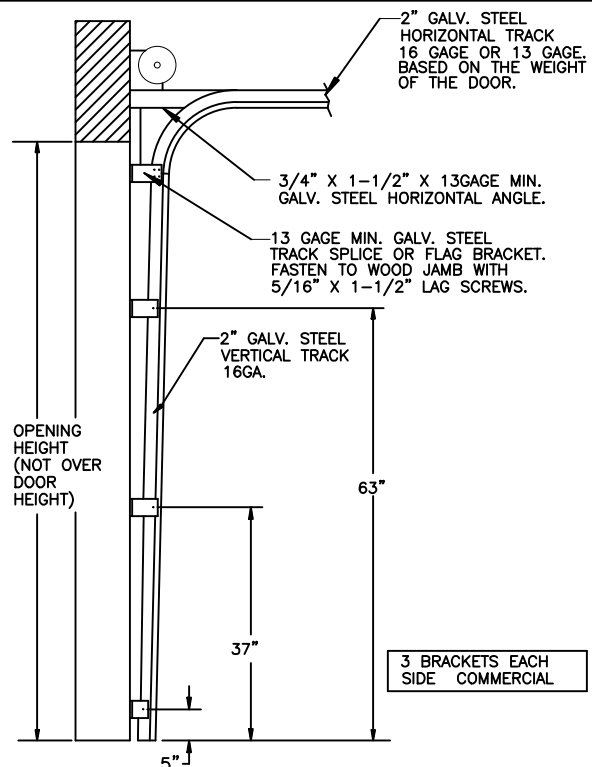
MODELS: 724, 426, 730, 735, 750, 755

PART NAME: WINDLOAD RESIDENTIAL PAN DOOR W2 B

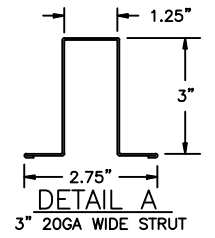
|            |               |                   |
|------------|---------------|-------------------|
| NEXT LEVEL | DATE: 2/27/07 | DWG. NO. 99-B-080 |
| PLOT SCALE | DRN. BY BH    | SHEET 1 OF 6      |

SCALE NONE

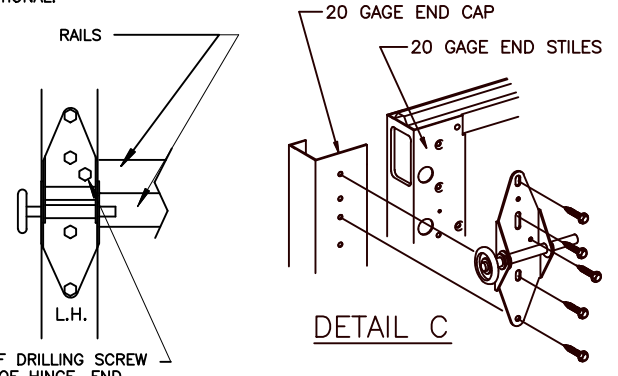
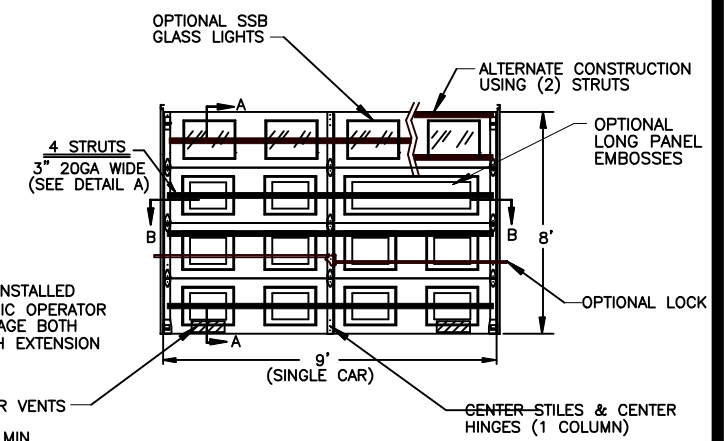
COMPLIES WITH THE WINDLOAD REQUIREMENTS OF THE IBC/IRC 2018.



NOTE: ALL NON-DESCRIPTIVE FASTENERS SHOWN TO BE 1/4"-20 X 5/8" HEX BOLTS & NUTS OR 1/4" X 3/4" LONG HEX HEAD SHEET METAL SCREWS.



NOTE: DOOR MUST BE INSTALLED WITH EITHER AN ELECTRIC OPERATOR OR A LOCK (MUST ENGAGE BOTH TRACKS ON DOORS WITH EXTENSION SPRINGS).



USE ONE EXTRA SELF DRILLING SCREW THROUGH TOP LEAF OF HINGE, END STILE, CAP AND RAIL. TYPICAL EACH END HINGE.

NOTE: GLAZING DOES NOT SATISFY IMPACT DEBRIS REQUIREMENTS IN FBC

FL 15080

9 X 8

P.S.F. TABLE

| DOOR SIZE |        | DESIGN PRESSURE |          | TEST PRESSURE |          |
|-----------|--------|-----------------|----------|---------------|----------|
| WIDTH     | HEIGHT | POSITIVE        | NEGATIVE | POSITIVE      | NEGATIVE |
| 9'-0"     | 8'-0"  | +22.9           | -26.4    | +34.4         | -39.6    |

DOORS SHOWN ON THIS DRAWING HAVE BEEN DEMONSTRATED TO WITHSTAND THE PRESSURES LISTED IN THE TABLE ABOVE VIA TESTING TO ANSI/DASMA 108-05/12/17.

DETERMINATION OF SUITABILITY FOR SPECIFIC SITES IS THE RESPONSIBILITY OF OTHERS.

John E Scates PE  
2560 King Arthur Blvd #124-54  
Lewisville, TX 75056  
TX-PE 56308, F-2203  
FL-PE-51737

Professional Engineer's seal provided only for verification of windload construction details.

COMPLIES WITH THE WINDLOAD REQUIREMENTS OF THE IBC/IRC 2018.

|      |                          |         |
|------|--------------------------|---------|
| E    | ROLLER NOTES, PE ADDRESS | 5/28/20 |
| D    | REV LOGO & ADDRESS       | 1/28/13 |
| C    | 12/15/11                 | RLB     |
| B    | 2866                     | 3/10/08 |
| A    | 2848                     | 11/1/07 |
|      | 2810                     | 3-8-07  |
| REV. | E.C.N.                   | DATE    |
|      |                          | APPROV. |

**W WINDSOR DOOR**

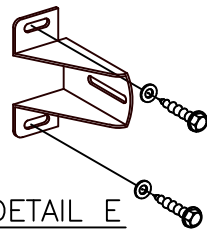
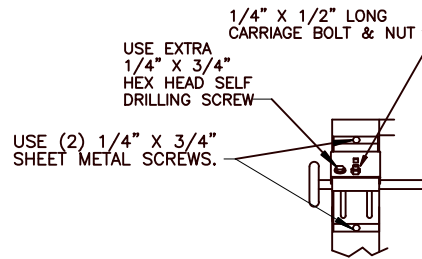
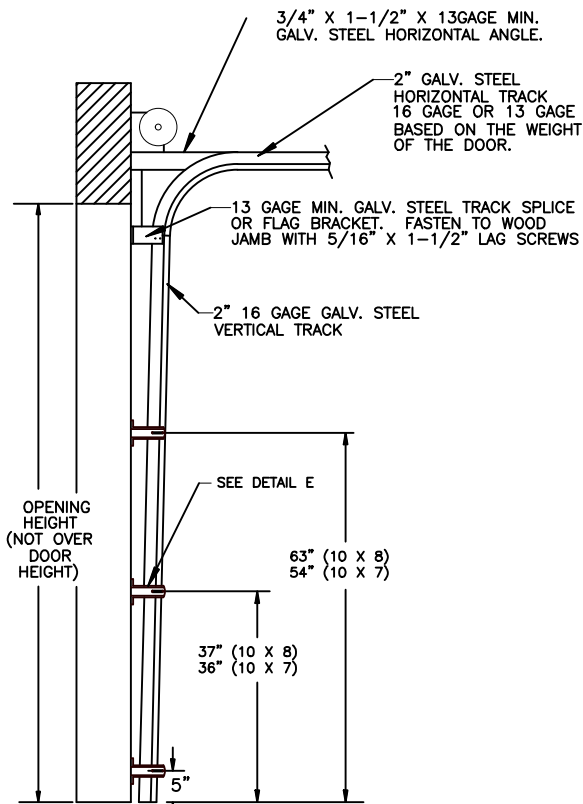
5800 SCOTT HAMILTON DR. LITTLE ROCK, AR 72209 (501) 562-1872

MODELS: 724, 426, 730, 735, 750, 755

PART NAME: WINDLOAD RESIDENTIAL PAN DOOR W2 B

|            |               |                   |
|------------|---------------|-------------------|
| NEXT LEVEL | DATE: 2/27/07 | DWG. NO. 99-B-080 |
| PLOT SCALE | DRN. BY BH    | SHEET 2 OF 6      |

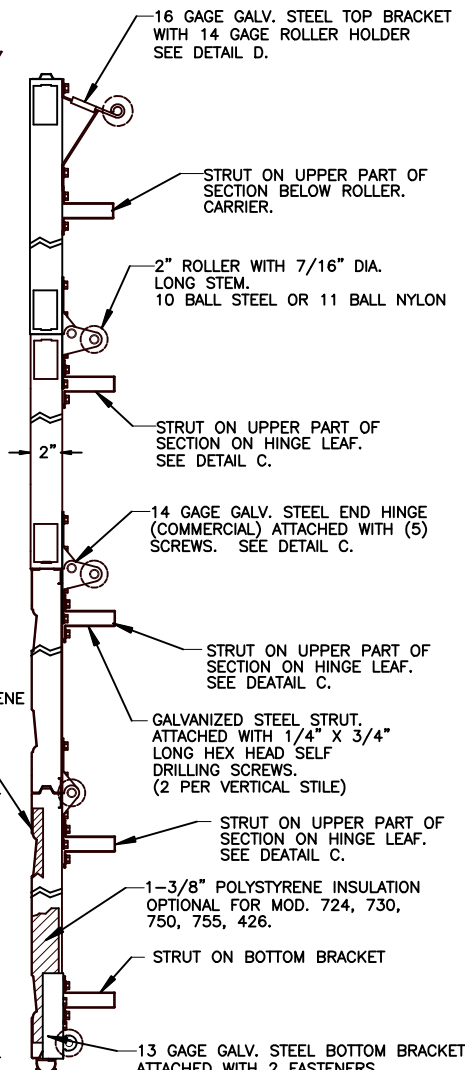
SCALE NONE



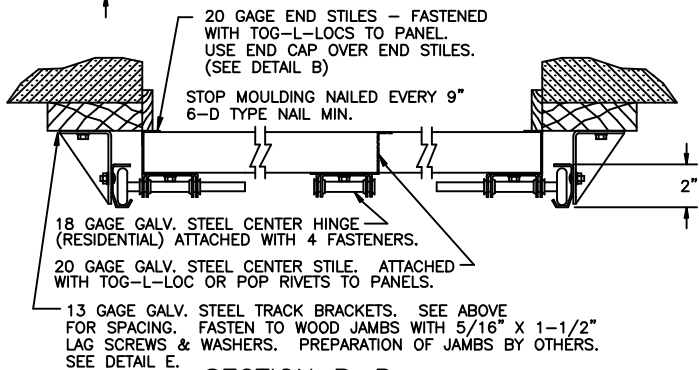
3 BRACKETS EACH SIDE

DETAIL D

DETAIL E

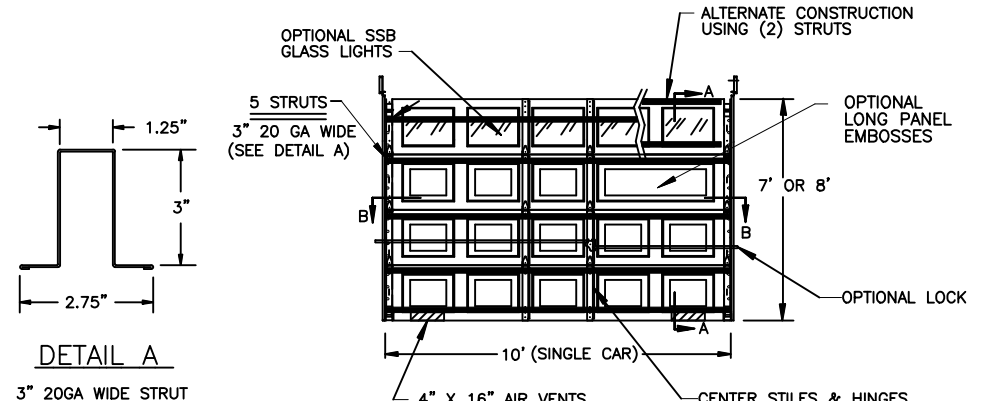


SECTION A-A



SECTION B-B

NOTE: ALL NON-DESCRIPTIVE FASTENERS SHOWN TO BE 1/4"-20 X 5/8" HEX BOLTS & NUTS OR 1/4" X 3/4" LONG HEX HEAD SHEET METAL SCREWS.

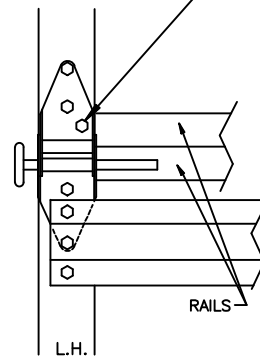


DETAIL A

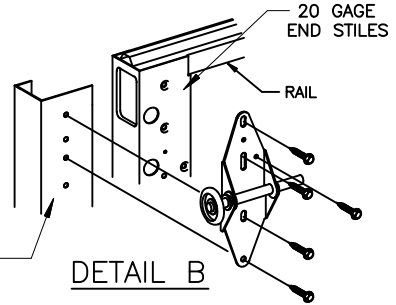
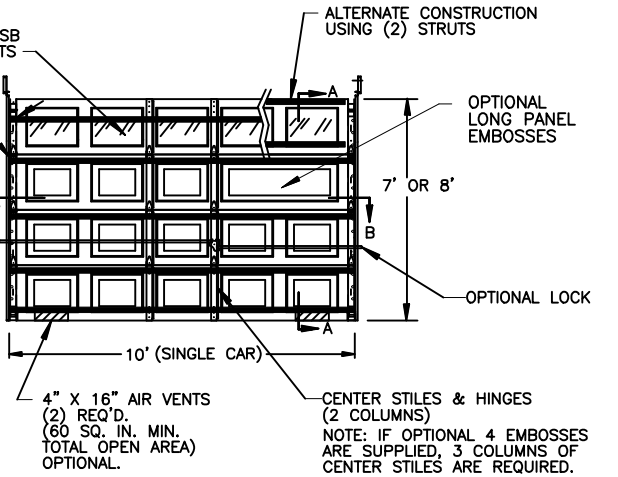
3" 20GA WIDE STRUT

NOTE: DOOR MUST BE INSTALLED WITH EITHER AN ELECTRIC OPERATOR OR A LOCK (MUST ENGAGE BOTH TRACKS ON DOORS WITH EXTENSION SPRINGS).

USE ONE EXTRA SELF DRILLING SCREW THROUGH TOP LEAF OF HINGE, END STILE & RAIL. TYPICAL EACH END HINGE



DETAIL C



DETAIL B

10 X 7

10 X 8

NOTE: GLAZING DOES NOT SATISFY IMPACT DEBRIS REQUIREMENTS IN FBC

FL 15080

| P.S.F. TABLE |        |                 |          |               |          |
|--------------|--------|-----------------|----------|---------------|----------|
| DOOR SIZE    |        | DESIGN PRESSURE |          | TEST PRESSURE |          |
| WIDTH        | HEIGHT | POSITIVE        | NEGATIVE | POSITIVE      | NEGATIVE |
| 10'-0"       | 7'-0"  | +27.0           | -30.5    | +40.5         | -45.8    |
| 10'-0"       | 8'-0"  | +27.0           | -30.5    | +40.5         | -45.8    |

DOORS SHOWN ON THIS DRAWING HAVE BEEN DEMONSTRATED TO WITHSTAND THE PRESSURES LISTED IN THE TABLE ABOVE VIA TESTING TO ANSI/DASMA 108-05/12/17.

DETERMINATION OF SUITABILITY FOR SPECIFIC SITES IS THE RESPONSIBILITY OF OTHERS.

John E Scates PE  
2560 King Arthur Blvd #124-54  
Lewisville, TX 75056  
TX-PE 56308, F-2203  
FL-PE-51737

Professional Engineer's seal provided only for verification of windload construction details.

COMPLIES WITH THE WINDLOAD REQUIREMENTS OF THE IBC/IRC 2018.



5800 SCOTT HAMILTON DR. LITTLE ROCK, AR 72209 (501) 562-1872

MODELS: 724, 426, 730, 735, 750, 755

| REV. | E.C.N.                   | DATE     | APPROV. |
|------|--------------------------|----------|---------|
| E    | ROLLER NOTES, PE ADDRESS | 5/28/20  |         |
| D    | REV LOGO & ADDRESS       | 1/28/13  |         |
| C    |                          | 12/15/11 | RLB     |
| B    | 2866                     | 3/10/08  | RLB     |
| A    | 2848                     | 11/1/07  | RLB     |
|      |                          | 2810     | 3-8-07  |
|      |                          |          | RLB     |

| PART NAME:<br>WINDLOAD RESIDENTIAL PAN DOOR<br>W2 B |                  |                      |  |
|---|------------------|----------------------|--|
| NEXT LEVEL  | DATE:<br>2/27/07 | DWG. NO.<br>99-B-080 |  |
| PLOT SCALE  | DRN. BY<br>BH    | SHEET 3 OF 6         |  |

SCALE NONE

3/4" X 1-1/2" X 13GAGE MIN. GALV. STEEL HORIZONTAL ANGLE.

2" GALV. STEEL HORIZONTAL TRACK 16 GAGE OR 13 GAGE BASED ON THE WEIGHT OF THE DOOR.

USE EXTRA 1/4" X 3/4" HEX HEAD SELF DRILLING SCREW

1/4" X 1/2" LONG CARRIAGE BOLT & NUT

USE (2) 1/4" X 3/4" SHEET METAL SCREWS.

13 GAGE MIN. GALV. STEEL TRACK SPLICE OR FLAG BRACKET. FASTEN TO WOOD JAMB WITH 5/16" X 1-1/2" LAG SCREWS.

2" 16 GAGE GALV. STEEL VERTICAL TRACK BOLTED TO TRACK BRACKETS WITH 1/4"-20 X 5/8" TRACK BOLTS.

OPENING HEIGHT (NOT OVER DOOR HEIGHT)

54"

SEE DETAIL E

36"

5"

DETAIL E

3 BRACKETS EACH SIDE

20 GAGE END STILES - FASTENED WITH TOG-L-LOCKS TO PANEL. USE END CAP OVER END STILES. (SEE DETAIL B)

STOP MOULDING NAILED EVERY 9" 6-D TYPE NAIL MIN.

18 GAGE GALV. STEEL CENTER HINGE RESIDENTIAL.

20 GAGE GALV. STEEL CENTER STILE

13 GAGE GALV. STEEL TRACK BRACKETS. SEE ABOVE FOR SPACING. FASTEN TO WOOD JAMBS WITH 5/16" X 1-1/2" LAG SCREWS & WASHERS. PREPARATION OF JAMBS BY OTHERS. SEE DETAIL E.

SECTION B-B

| DOOR SIZE |        | P.S.F. TABLE             |                          |                        |                        |
|-----------|--------|--------------------------|--------------------------|------------------------|------------------------|
| WIDTH     | HEIGHT | DESIGN PRESSURE POSITIVE | DESIGN PRESSURE NEGATIVE | TEST PRESSURE POSITIVE | TEST PRESSURE NEGATIVE |
| 16'-0"    | 7'-0"  | +22.2                    | -25.0                    | +33.3                  | -37.5                  |

DOORS SHOWN ON THIS DRAWING HAVE BEEN DEMONSTRATED TO WITHSTAND THE PRESSURES LISTED IN THE TABLE ABOVE VIA TESTING TO ANSI/DASMA 108-05/12/17.

DETERMINATION OF SUITABILITY FOR SPECIFIC SITES IS THE RESPONSIBILITY OF OTHERS.

John E Scates PE  
2560 King Arthur Blvd #124-54  
Lewisville, TX 75056  
TX-PE 56308, F-2203  
FL-PE-51737

Professional Engineer's seal provided only for verification of windload construction details.

NOTE: ALL NON-DESCRIPTIVE FASTENERS SHOWN TO BE 1/4"-20 X 5/8" HEX BOLTS & NUTS OR 1/4" X 3/4" LONG HEX HEAD SHEET METAL SCREWS.

COMPLIES WITH THE WINDLOAD REQUIREMENTS OF THE IBC/IRC 2018.

DETAIL D

16GA. GALV. STEEL TOP BRACKET WITH 14GA. ROLLER HOLDER SEE DETAIL D.

1/4" X 3/4" LONG HEX HEAD SELF DRILLING SCREWS. (2 PER VERTICAL STILE)

STRUT JUST BELOW TOP FIXTURE.

2" ROLLER WITH 7/16" DIA. LONG STEM. 10 BALL STEEL OR 11 BALL NYLON

14 GAGE GALV. STEEL END HINGE (COMMERCIAL) ATTACHED WITH (5) SCREWS. SEE DETAIL C.

STRUT ON UPPER PART OF SECTION ON HINGE LEAF. SEE DETAIL C

GALVANIZED STEEL STRUT. ATTACHED WITH 1/4" X 3/4" LONG HEX HEAD SELF DRILLING SCREWS. (2 PER VERTICAL STILE)

STRUT ON UPPER PART OF SECTION ON HINGE LEAF. SEE DETAIL C

1/2" POLYSTYRENE INSULATION STANDARD FOR MODEL 735

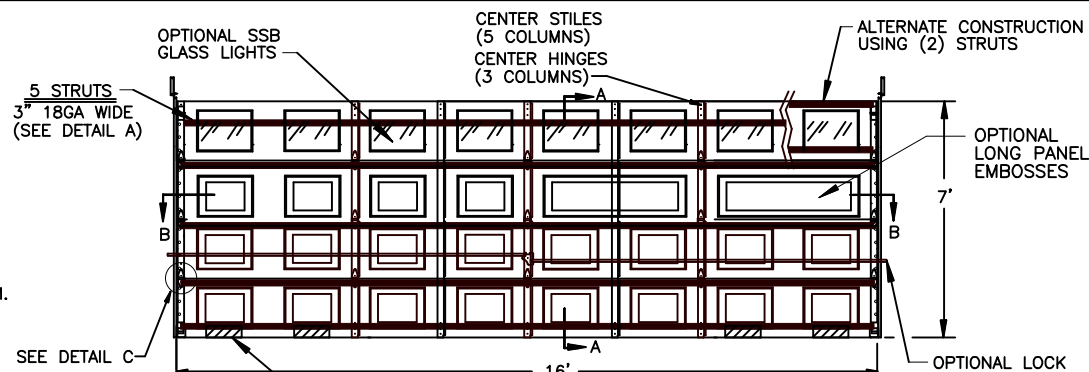
21" HIGH PANEL GALV. AND PREPAINTED STEEL 25 GAGE FOR ALL MODELS EXCEPT 24 GAGE MODEL 750, 755.

1-3/8" POLYSTYRENE INSULATION OPTIONAL FOR MOD. 724, 730, 750, 755, 426.

STRUT ON BOTTOM BRACKET

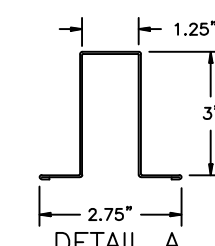
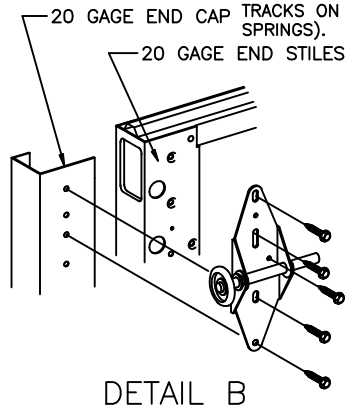
13 GAGE GALV. STEEL BOTTOM BRACKET ATTACHED WITH 2 FASTENERS. BOTTOM SCREW CAN BE ABOVE OR BELOW ROLLER.

SECTION A-A

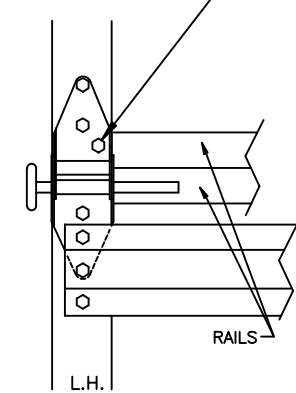


USE ONE EXTRA SELF DRILLING SCREW THROUGH TOP LEAF OF HINGE, END STILE & RAIL. TYPICAL EACH END HINGE.

NOTE: DOOR MUST BE INSTALLED WITH EITHER AN ELECTRIC OPERATOR OR A LOCK (MUST ENGAGE BOTH TRACKS ON DOORS WITH EXTENSION SPRINGS).



DETAIL B



DETAIL C

NOTE: GLAZING DOES NOT SATISFY IMPACT DEBRIS REQUIREMENTS IN FBC

FL 15080

16 X 7

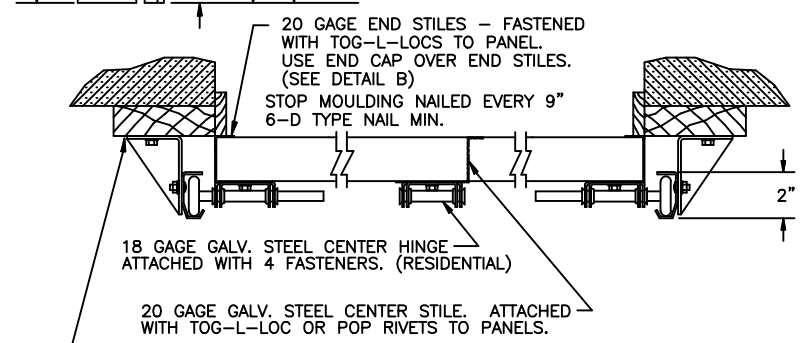
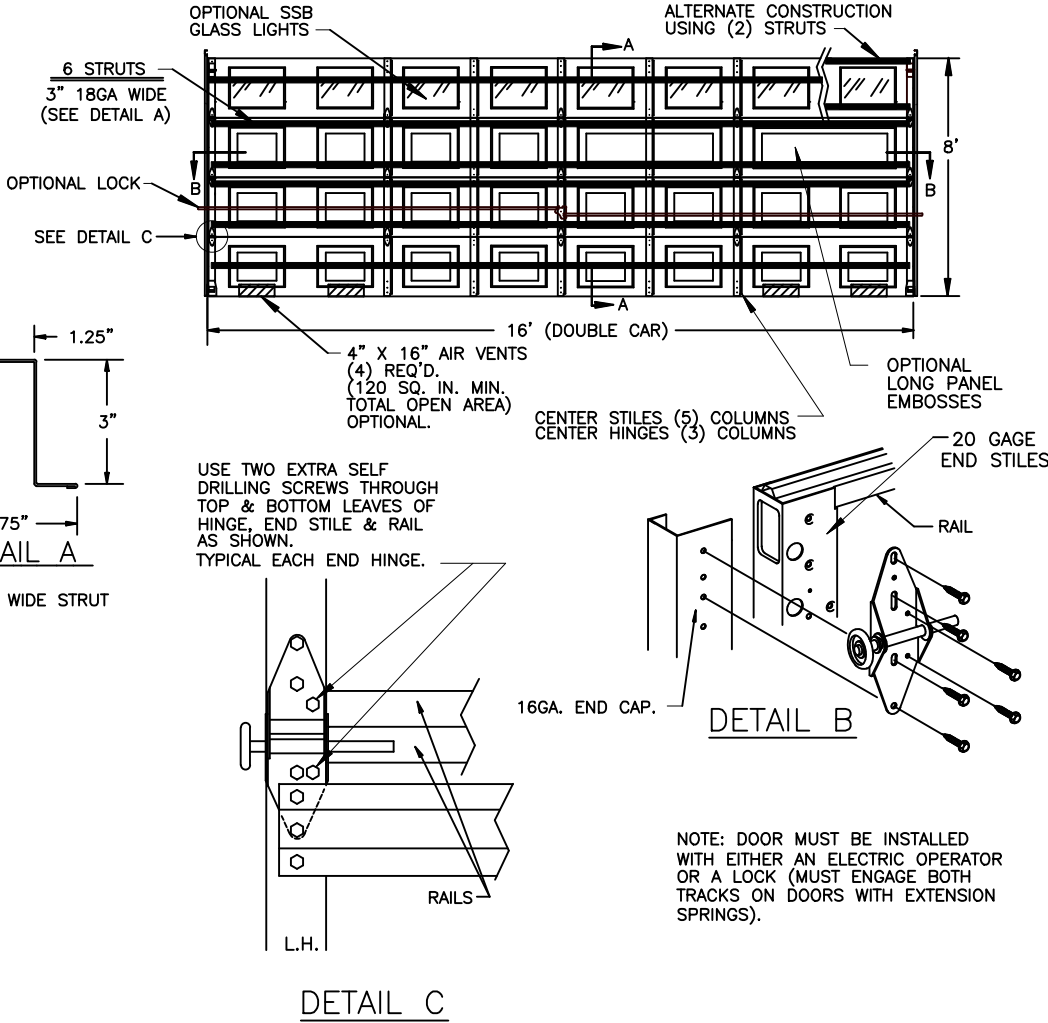
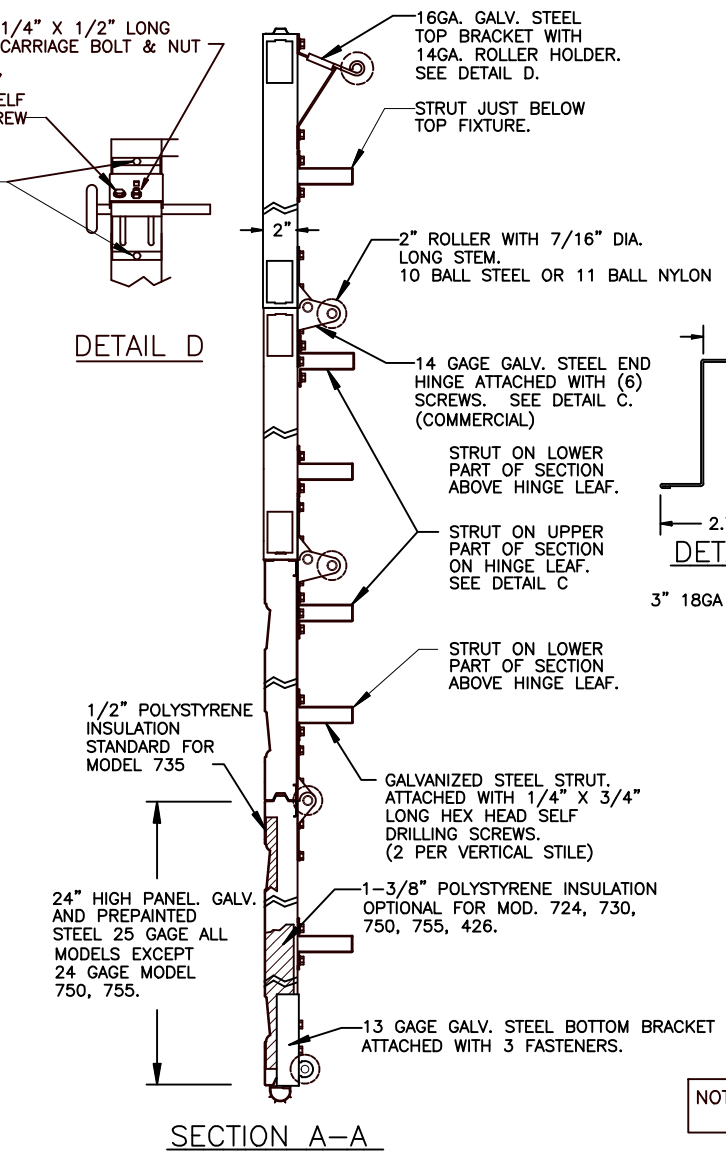
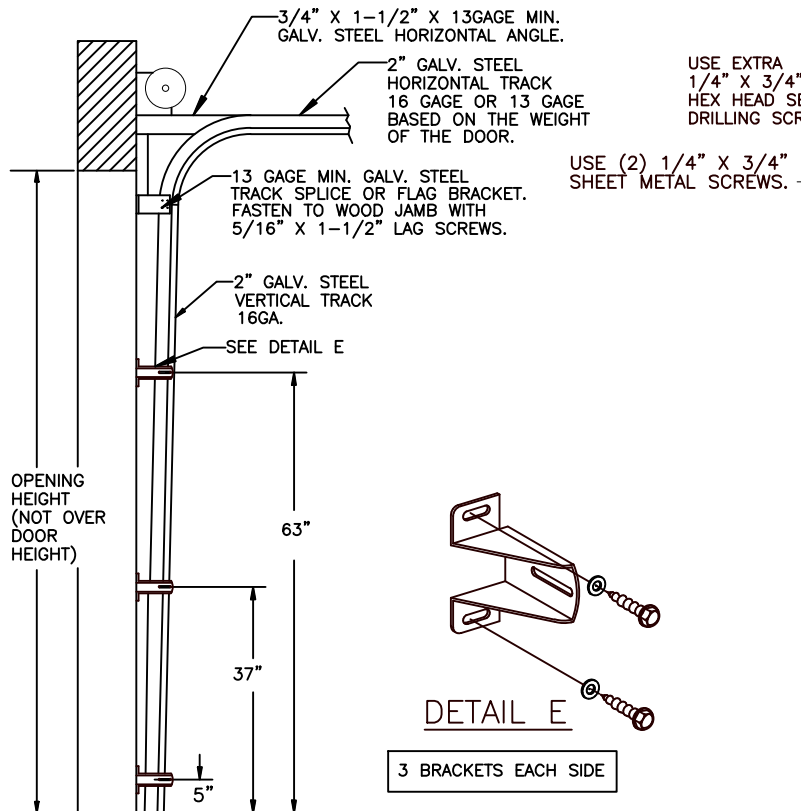
| REV. | E.C.N.                   | DATE     | APPROV. |
|------|--------------------------|----------|---------|
| E    | ROLLER NOTES, PE ADDRESS | 5/28/20  |         |
| D    | REV LOGO & ADDRESS       | 1/28/13  |         |
| C    |                          | 12/15/11 | RLB     |
| B    | 2866                     | 3/10/08  | RLB     |
| A    | 2848                     | 11/1/07  | RLB     |
|      | 2810                     | 3-8-07   | RLB     |

5800 SCOTT HAMILTON DR.  
LITTLE ROCK, AR 72209  
(501) 562-1872

MODELS:  
724, 426, 730, 735, 750, 755

PART NAME:  
WINDLOAD RESIDENTIAL PAN DOOR  
W2 B

|            |                  |                      |
|------------|------------------|----------------------|
| NEXT LEVEL | DATE:<br>2/27/07 | DWG. NO.<br>99-B-080 |
| PLOT SCALE | DRN. BY<br>BH    | SHEET 4 OF 6         |



**SECTION B-B**

20 GAGE GALV. STEEL CENTER STILE. ATTACHED WITH TOG-L-LOC OR POP RIVETS TO PANELS.

13 GAGE GALV. STEEL TRACK BRACKETS. SEE ABOVE FOR SPACING. FASTEN TO WOOD JAMBS WITH 5/16\"/>

**SECTION A-A**

16GA. GALV. STEEL TOP BRACKET WITH 14GA. ROLLER HOLDER. SEE DETAIL D.

2\"/>

NOTE: GLAZING DOES NOT SATISFY IMPACT DEBRIS REQUIREMENTS IN FBC

FL 15080

16 X 8

**P.S.F. TABLE**

| DOOR SIZE |        | DESIGN PRESSURE |          | TEST PRESSURE |          |
|-----------|--------|-----------------|----------|---------------|----------|
| WIDTH     | HEIGHT | POSITIVE        | NEGATIVE | POSITIVE      | NEGATIVE |
| 16'-0"    | 8'-0"  | +22.2           | -25.0    | +33.3         | -37.5    |

DOORS SHOWN ON THIS DRAWING HAVE BEEN DEMONSTRATED TO WITHSTAND THE PRESSURES LISTED IN THE TABLE ABOVE VIA TESTING TO ANSI/DASMA 108-05/12/17.

DETERMINATION OF SUITABILITY FOR SPECIFIC SITES IS THE RESPONSIBILITY OF OTHERS.

John E. Scates PE  
2560 King Arthur Blvd #124-54  
Lewisville, TX 75056  
TX-PE 56308, F-2203  
FL-PE-51737

Professional Engineer's seal provided only for verification of windload construction details.

COMPLIES WITH THE WINDLOAD REQUIREMENTS OF THE IBC/IRC 2018.

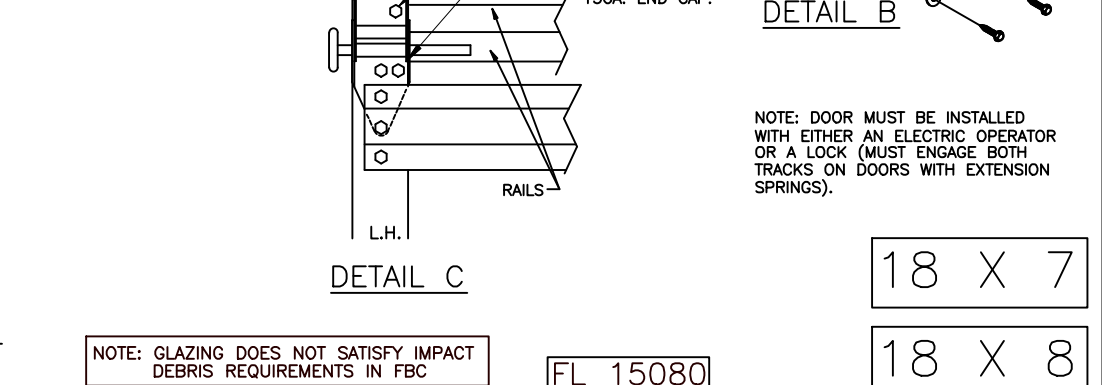
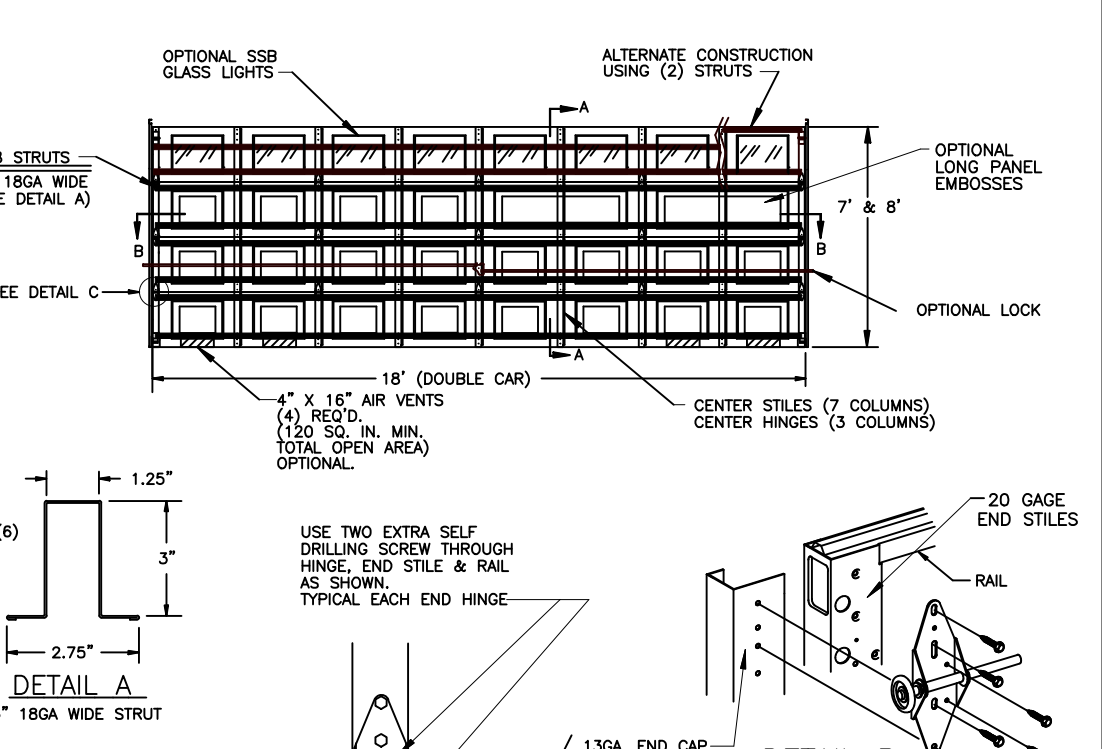
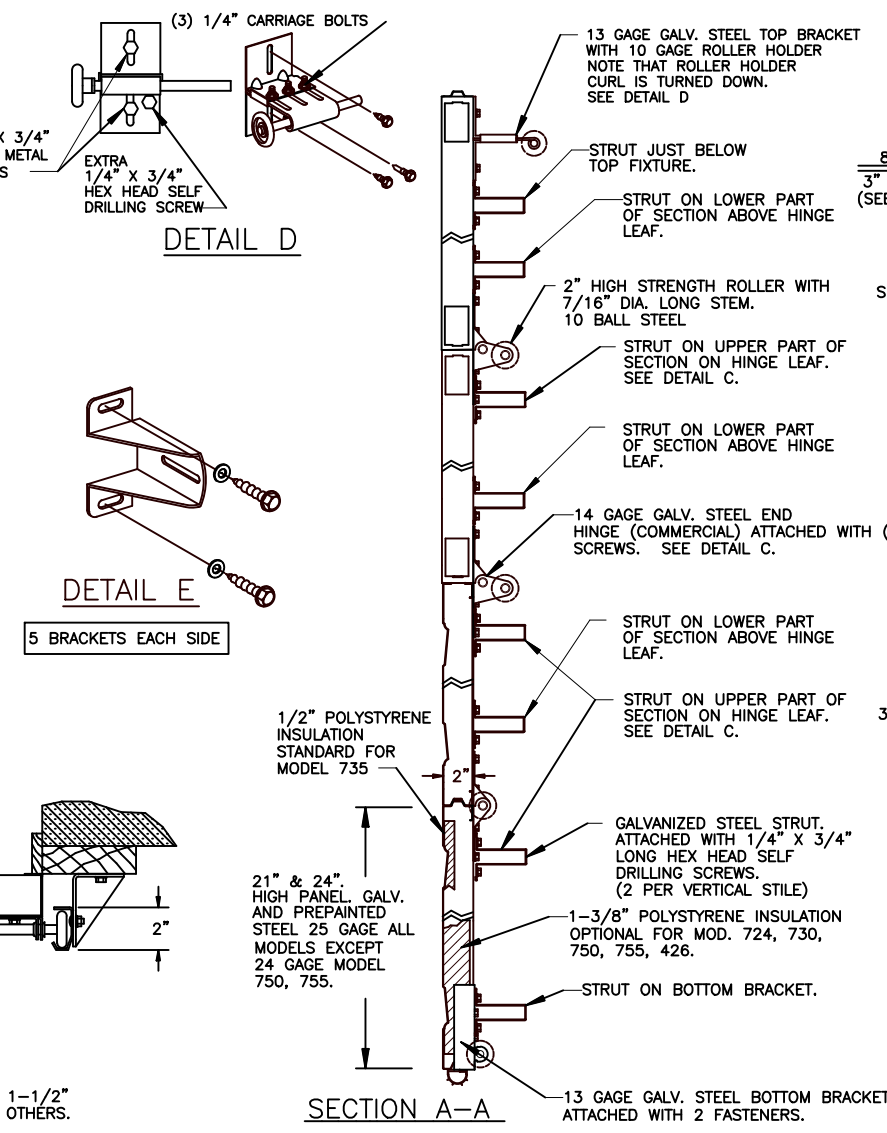
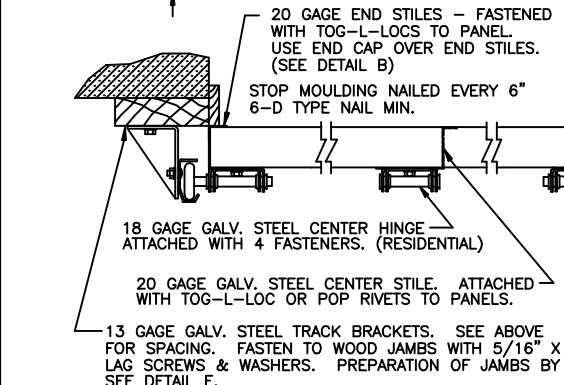
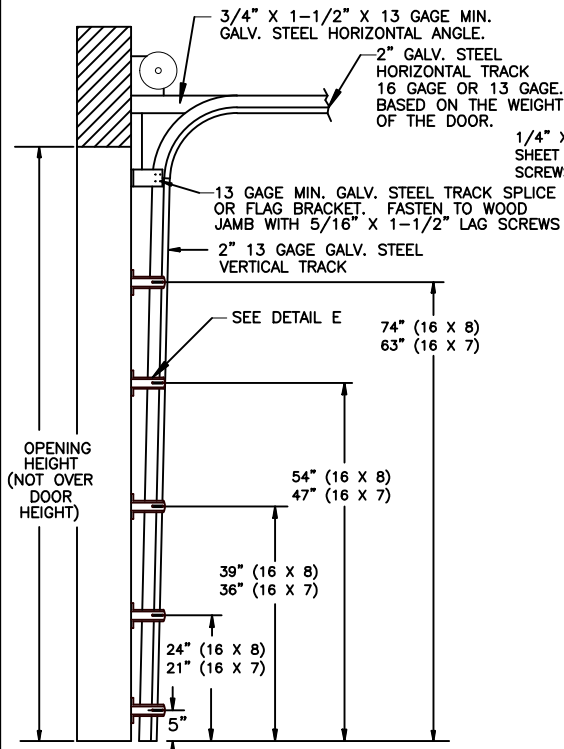
| REV. | E.C.N.                   | DATE    | APPROV. |
|------|--------------------------|---------|---------|
| E    | ROLLER NOTES, PE ADDRESS | 5/28/20 |         |
| D    | REV LOGO & ADDRESS       | 1/28/13 |         |
| C    | 12/15/11                 | RLB     |         |
| B    | 2866                     | 3/10/08 | RLB     |
| A    | 2848                     | 11/1/07 | RLB     |
|      | 2810                     | 3-8-07  | RLB     |

5800 SCOTT HAMILTON DR.  
LITTLE ROCK, AR 72209  
(501) 562-1872

**MODELS:**  
724, 426, 730, 735, 750, 755

**PART NAME:**  
WINDLOAD RESIDENTIAL PAN DOOR W2 B

|            |                  |                      |
|------------|------------------|----------------------|
| NEXT LEVEL | DATE:<br>2/27/07 | DWG. NO.<br>99-B-080 |
| PLOT SCALE | DRN. BY<br>BH    | SHEET 5 OF 6         |



SECTION B-B

SECTION A-A

P.S.F. TABLE

| DOOR SIZE |        | DESIGN PRESSURE |          | TEST PRESSURE |          |
|-----------|--------|-----------------|----------|---------------|----------|
| WIDTH     | HEIGHT | POSITIVE        | NEGATIVE | POSITIVE      | NEGATIVE |
| 18'-0"    | 7'-0"  | +26.0           | -29.1    | +39.0         | -43.7    |
| 18'-0"    | 8'-0"  | +26.0           | -29.1    | +39.0         | -43.7    |

DOORS SHOWN ON THIS DRAWING HAVE BEEN DEMONSTRATED TO WITHSTAND THE PRESSURES LISTED IN THE TABLE ABOVE VIA TESTING TO ANSI/DASMA 108-05/12/17.

DETERMINATION OF SUITABILITY FOR SPECIFIC SITES IS THE RESPONSIBILITY OF OTHERS.

John E Scates PE  
2560 King Arthur Blvd #124-54  
Lewisville, TX 75056  
TX-PE 56308, F-2203  
FL-PE-51737

Professional Engineer's seal provided only for verification of windload construction details.

NOTE: ALL NON-DESCRIPTIVE FASTENERS SHOWN TO BE 1/4"-20 X 5/8" HEX BOLTS & NUTS OR 1/4" X 3/4" LONG HEX HEAD SHEET METAL SCREWS.

NOTE: GLAZING DOES NOT SATISFY IMPACT DEBRIS REQUIREMENTS IN FBC

FL 15080

18 X 7  
18 X 8

COMPLIES WITH THE WINDLOAD REQUIREMENTS OF THE IBC/IRC 2018.

| REV. | E.C.N.                   | DATE     | APPROV. |
|------|--------------------------|----------|---------|
| E    | ROLLER NOTES, PE ADDRESS | 5/28/20  |         |
| D    | REV LOGO & ADDRESS       | 1/28/13  |         |
| C    |                          | 12/15/11 | RLB     |
| B    | 2866                     | 3/10/08  | RLB     |
| A    | 2848                     | 11/1/07  | RLB     |
|      | 2810                     | 3-8-07   | RLB     |

5800 SCOTT HAMILTON DR.  
LITTLE ROCK, AR 72209  
(501) 562-1872

MODELS:  
724, 426, 730, 735, 750, 755

|  |                      |
|--|----------------------|
| PART NAME:<br>WINDLOAD RESIDENTIAL PAN DOOR W2 B |                      |
| NEXT LEVEL                                       | DATE:<br>2/27/07     |
| PLOT SCALE                                       | DRN. BY<br>BH        |
| SCALE<br>NONE                                    | DWG. NO.<br>99-B-080 |
|  | SHEET 6 OF 6         |