

P.S.F. TABLE

DOOR SIZE	DESIGN PRESSURE		TEST PRESSURE		
	WIDTH	HEIGHT	POSITIVE	NEGATIVE	
9'-0"	7'-0"	+22.9	-26.4	+34.4	-39.6
9'-0"	8'-0"	+19.2	-22.2	+28.8	-33.3

NOTE: ALL NON-DESCRIPTIVE FASTENERS SHOWN TO BE 1/4"-20 X 5/8" HEX BOLTS & NUTS OR 1/4" X 3/4" LONG HEX HEAD SHEET METAL SCREWS.

DOORS SHOWN ON THIS DRAWING HAVE BEEN DEMONSTRATED TO WITHSTAND THE PRESSURES LISTED IN THE TABLE ABOVE VIA TESTING TO ANSI/DASMA 108-05/12/17.

DETERMINATION OF SUITABILITY FOR SPECIFIC SITES IS THE RESPONSIBILITY OF OTHERS.

John E. Scates PE  
2560 King Arthur Blvd #124-54  
Lewisville, TX 75056  
TX-PE 56308, F-2203  
FL-PE-51737

Professional Engineer's seal provided only for verification of windload construction details.

COMPLIES WITH THE WINDLOAD REQUIREMENTS OF THE IBC/IRC 2018.

NOTE: GLAZING DOES NOT SATISFY IMPACT DEBRIS REQUIREMENTS IN FBC

D	ROLLER NOTES, PE ADDRESS	5/27/20
C	REV LOGO & ADDRESS	1/28/13
B	12/15/11	RLB
A	2866 3/10/08	RLB
	2848 11/1/07	RLB
REV.	E.C.N.	DATE:
		APPROV.

FL 15080

9 X 7  
9 X 8

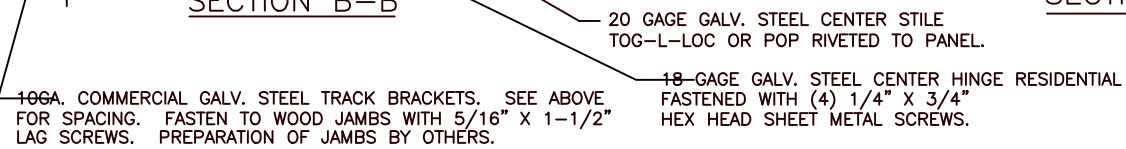
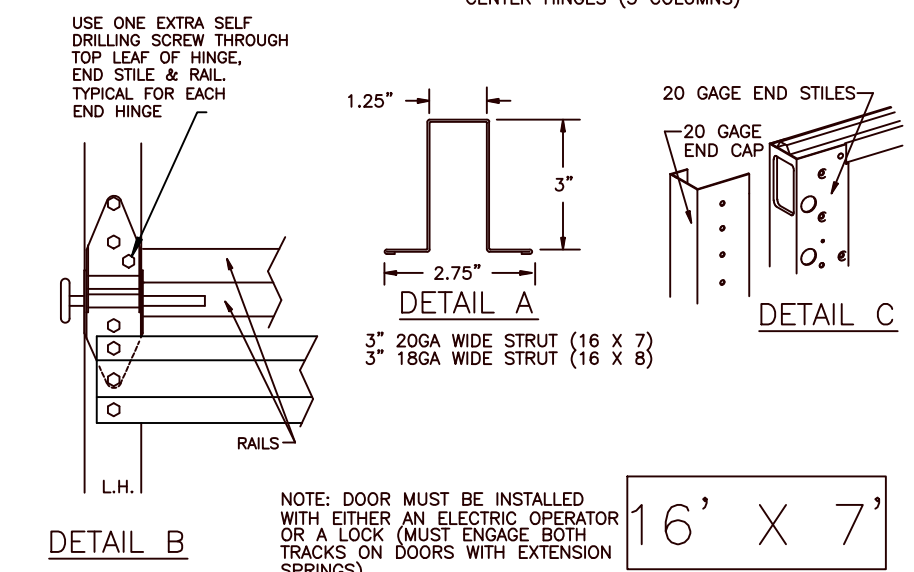
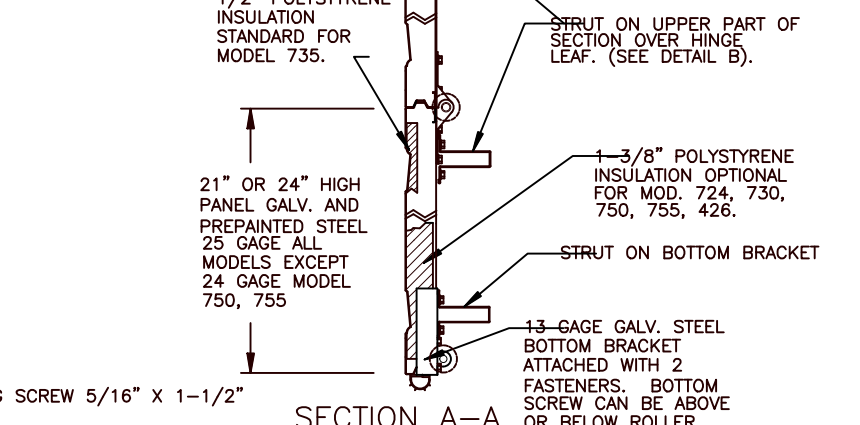
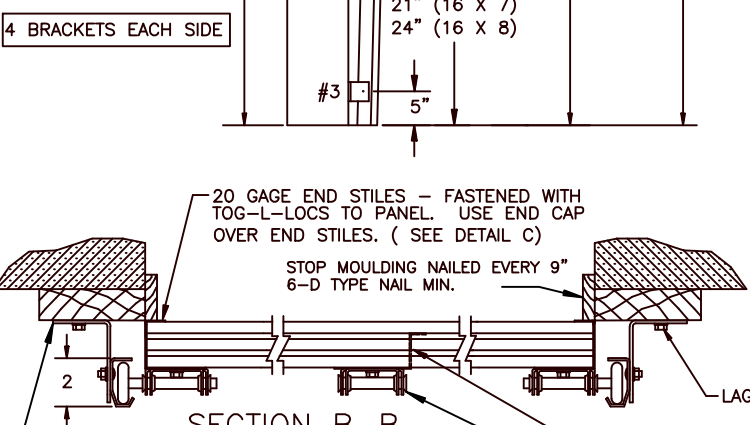
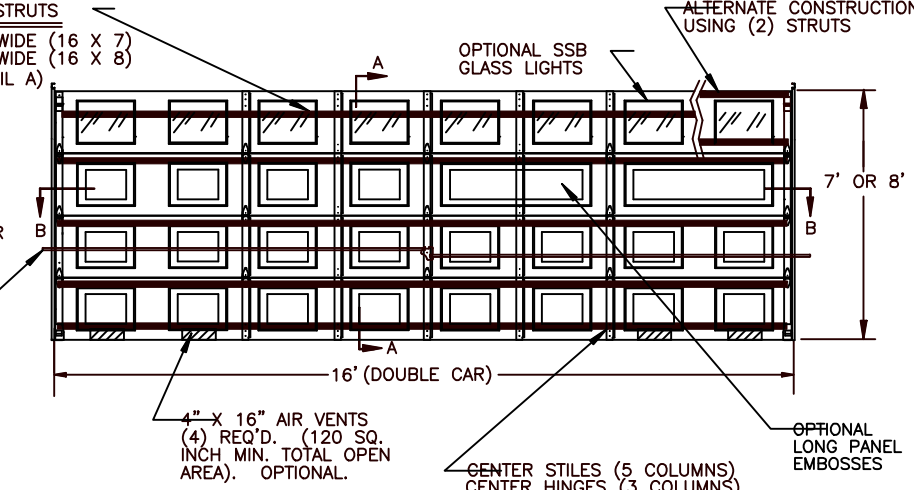
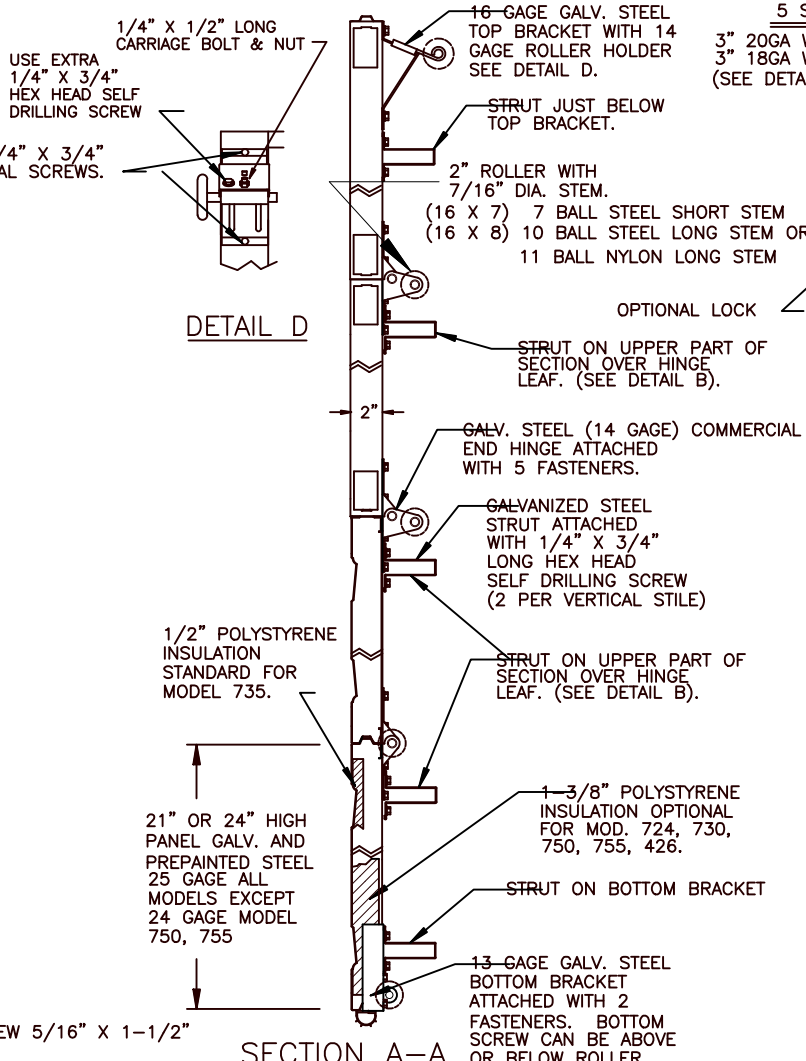
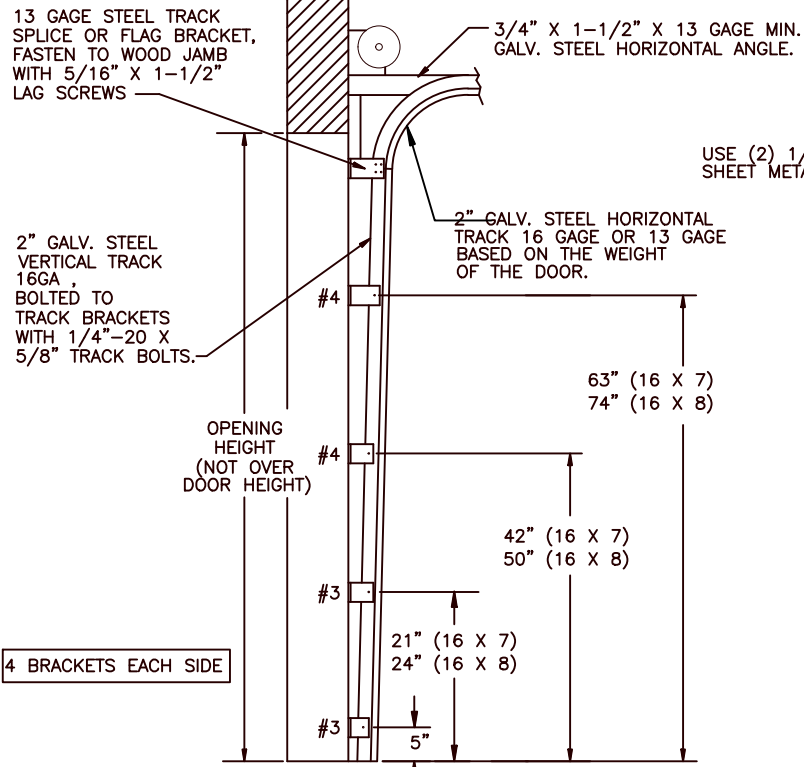
**W WINDSOR DOOR**

5800 SCOTT HAMILTON DR. LITTLE ROCK, AR 72209 (501) 562-1872

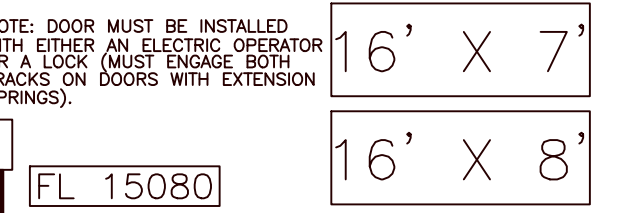
MODELS: 724, 426, 730, 735, 750, 755

PART NAME: WINDLOAD RESIDENTIAL PAN DOOR W1 B

TOLERANCE	FRAC. ± 1/64" DEC. ± .015 ANG. ± 1'	NEXT LEVEL	DATE: 11/1/07	DWG. NO. 99-B-079
SCALE NONE	PLOT SCALE	DRN. BY BH		SHT 1 OF 3



NOTE: GLAZING DOES NOT SATISFY IMPACT DEBRIS REQUIREMENTS IN FBC



P.S.F. TABLE					
DOOR SIZE		DESIGN PRESSURE		TEST PRESSURE	
WIDTH	HEIGHT	POSITIVE	NEGATIVE	POSITIVE	NEGATIVE
16'-0"	7'-0"	+18.7	-20.8	+28.1	-31.2
16'-0"	8'-0"	+18.7	-20.8	+28.1	-31.2

NOTE: ALL NON-DESCRIPTIVE FASTENERS SHOWN TO BE 1/4"-20 X 5/8" HEX BOLTS & NUTS OR 1/4" X 3/4" LONG HEX HEAD SHEET METAL SCREWS.

DOORS SHOWN ON THIS DRAWING HAVE BEEN DEMONSTRATED TO WITHSTAND THE PRESSURES LISTED IN THE TABLE ABOVE VIA TESTING TO ANSI/DASMA 108-05/12/17.

DETERMINATION OF SUITABILITY FOR SPECIFIC SITES IS THE RESPONSIBILITY OF OTHERS.

John E Scates PE  
2560 King Arthur Blvd #124-54  
Lewisville, TX 75056  
TX-PE 56308, F-2203  
FL-PE-51737

Professional Engineer's seal provided only for verification of windload construction details.

COMPLIES WITH THE WINDLOAD REQUIREMENTS OF THE IBC/IRC 2018.

D	ROLLER NOTES, PE ADDRESS	5/27/20
C	REV LOGO & ADDRESS	1/28/13
B	12/15/11	RLB
A	2866 3/10/08	RLB
	2848 11/1/07	RLB
REV.	E.C.N.	DATE: APPROV.

**W WINDSOR DOOR**

5800 SCOTT HAMILTON DR. LITTLE ROCK, AR 72209 (501) 562-1872

MODELS: 724, 426, 730, 735, 750, 755

PART NAME: WINDLOAD RESIDENTIAL PAN DOOR W1 B

TOLERANCE: FRAC. ± 1/64" DEC. ± .015 ANG. ± 1'

SCALE: NONE

DATE: 11/1/07

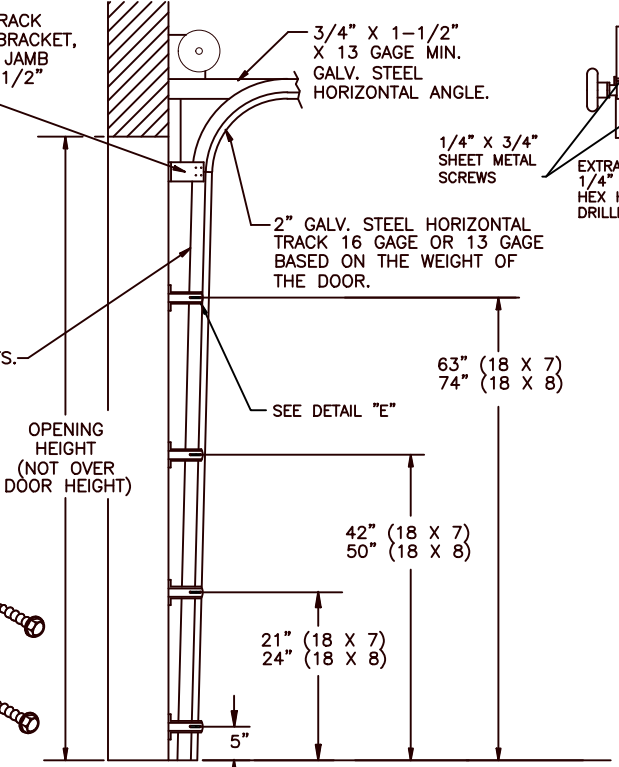
DWG. NO. 99-B-079

SHT 2 OF 3

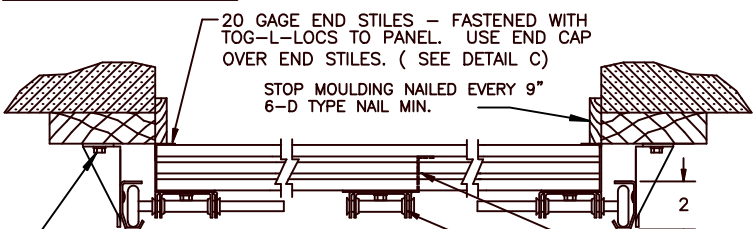
13 GAGE STEEL TRACK SPLICE OR FLAG BRACKET, FASTEN TO WOOD JAMB WITH 5/16" X 1-1/2" LAG SCREWS

2" GALV. STEEL VERTICAL TRACK 16GA BOLTED TO TRACK BRACKETS WITH 1/4"-20 X 5/8" TRACK BOLTS.

OPENING HEIGHT (NOT OVER DOOR HEIGHT)



SECTION B-B



13 GAGE GALV. STEEL WINDLOAD TRACK BRACKETS. SEE ABOVE FOR SPACING. FASTEN TO WOOD JAMBS WITH 5/16" X 1-1/2" LAG SCREWS & WASHERS. PREPARATION OF JAMBS BY OTHERS. SEE DETAIL "E".

20 GAGE GALV. STEEL CENTER STILE TOG-L-LOC OR POP RIVETED TO PANEL.  
18 GAGE GALV. STEEL CENTER HINGE RESIDENTIAL FASTENED WITH (4) 1/4" X 3/4" HEX HEAD SHEET METAL SCREWS.

DETAIL E

4 BRACKETS EACH SIDE

3/4" X 1-1/2" X 13 GAGE MIN. GALV. STEEL HORIZONTAL ANGLE.

1/4" X 3/4" SHEET METAL SCREWS

2" GALV. STEEL HORIZONTAL TRACK 16 GAGE OR 13 GAGE BASED ON THE WEIGHT OF THE DOOR.

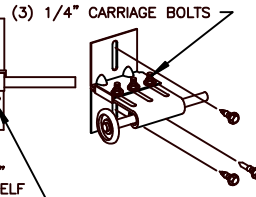
63" (18 X 7)  
74" (18 X 8)

42" (18 X 7)  
50" (18 X 8)

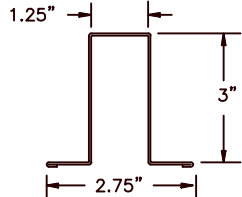
21" (18 X 7)  
24" (18 X 8)

SEE DETAIL "E"

5"



DETAIL D



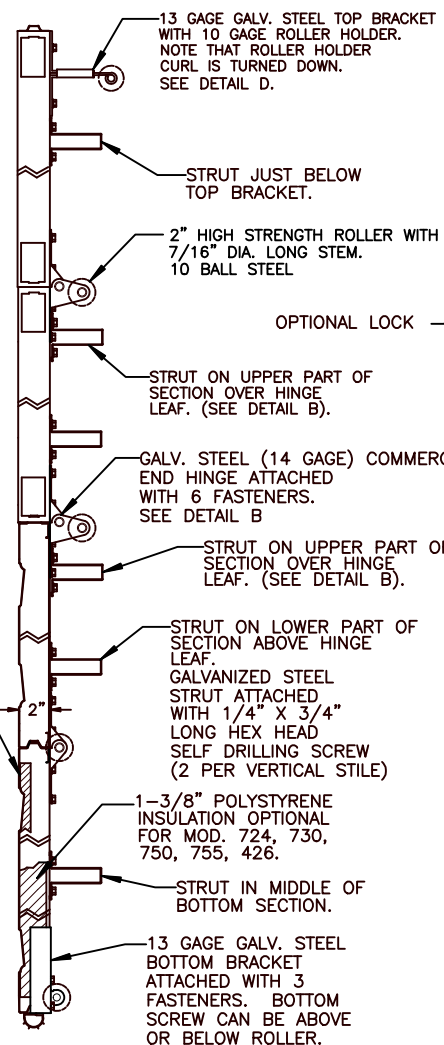
DETAIL A

3" 18GA WIDE STRUT

1/2" POLYSTYRENE INSULATION STANDARD FOR MODEL 735.

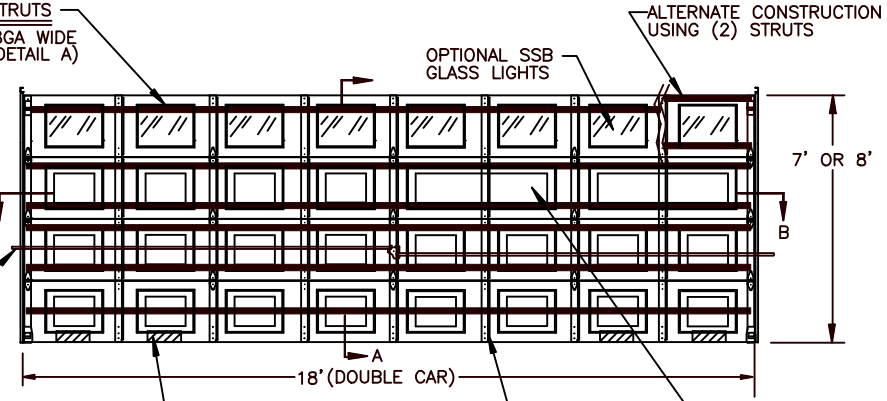
21" OR 24" HIGH PANEL GALV. AND PREPAINTED STEEL 25 GAGE ALL MODELS EXCEPT 24 GAGE MODEL 750, 755.

SECTION A-A



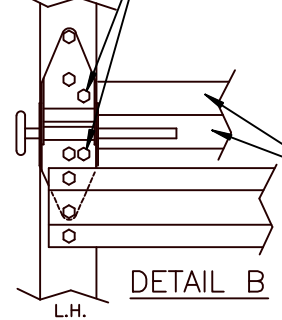
1-3/8" POLYSTYRENE INSULATION OPTIONAL FOR MOD. 724, 730, 750, 755, 426.  
STRUT IN MIDDLE OF BOTTOM SECTION.  
13 GAGE GALV. STEEL BOTTOM BRACKET ATTACHED WITH 3 FASTENERS. BOTTOM SCREW CAN BE ABOVE OR BELOW ROLLER.

6 STRUTS  
3" 18GA WIDE (SEE DETAIL A)

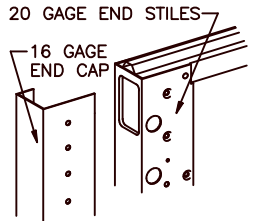


4" X 16" AIR VENTS (4) REQ'D. (120 SQ. INCH MIN. TOTAL OPEN AREA). OPTIONAL.

USE TWO EXTRA SELF DRILLING SCREWS THROUGH HINGE LEAF, END STILE & RAIL AS SHOWN. TYPICAL EACH END HINGE.



DETAIL B



DETAIL C

NOTE: DOOR MUST BE INSTALLED WITH EITHER AN ELECTRIC OPERATOR OR A LOCK (MUST ENGAGE BOTH TRACKS ON DOORS WITH EXTENSION SPRINGS).

18' X 7'

18' X 8'

NOTE: GLAZING DOES NOT SATISFY IMPACT DEBRIS REQUIREMENTS IN FBC

FL 15080

P.S.F. TABLE					
DOOR SIZE		DESIGN PRESSURE		TEST PRESSURE	
WIDTH	HEIGHT	POSITIVE	NEGATIVE	POSITIVE	NEGATIVE
18'-0"	7'-0"	+18.7	-20.8	+28.1	-31.2
18'-0"	8'-0"	+18.7	-20.8	+28.1	-31.2

NOTE: ALL NON-DESCRIPTIVE FASTENERS SHOWN TO BE 1/4"-20 X 5/8" HEX BOLTS & NUTS OR 1/4" X 3/4" LONG HEX HEAD SHEET METAL SCREWS.

DOORS SHOWN ON THIS DRAWING HAVE BEEN DEMONSTRATED TO WITHSTAND THE PRESSURES LISTED IN THE TABLE ABOVE VIA TESTING TO ANSI/DASMA 108-05/12/17.

DETERMINATION OF SUITABILITY FOR SPECIFIC SITES IS THE RESPONSIBILITY OF OTHERS.

John E Scates PE  
2560 King Arthur Blvd #124-54  
Lewisville, TX 75056  
TX-PE 56308, F-2203  
FL-PE-51737

Professional Engineer's seal provided only for verification of windload construction details.

COMPLIES WITH THE WINDLOAD REQUIREMENTS OF THE IBC/IRC 2018.

D	ROLLER NOTES, PE ADDRESS	5/27/20
C	REV LOGO & ADDRESS	1/28/13
B	12/15/11	RLB
A	2866 3/10/08	RLB
	2848 11/1/07	RLB
REV.	E.C.N.	DATE: APPROV.

**W WINDSOR DOOR**  
5800 SCOTT HAMILTON DR.  
LITTLE ROCK, AR 72209  
(501) 562-1872

MODELS: 724, 426, 730, 735, 750, 755

PART NAME: WINDLOAD RESIDENTIAL PAN DOOR W1 B		DWG. NO. 99-B-079	
TOLERANCE FRAC. ± 1/64" DEC. ± .015 ANG. ± 1'	DATE: 11/1/07	DRN. BY BH	SHT 3 OF 3
SCALE NONE	PLOT SCALE		