

NOTES:

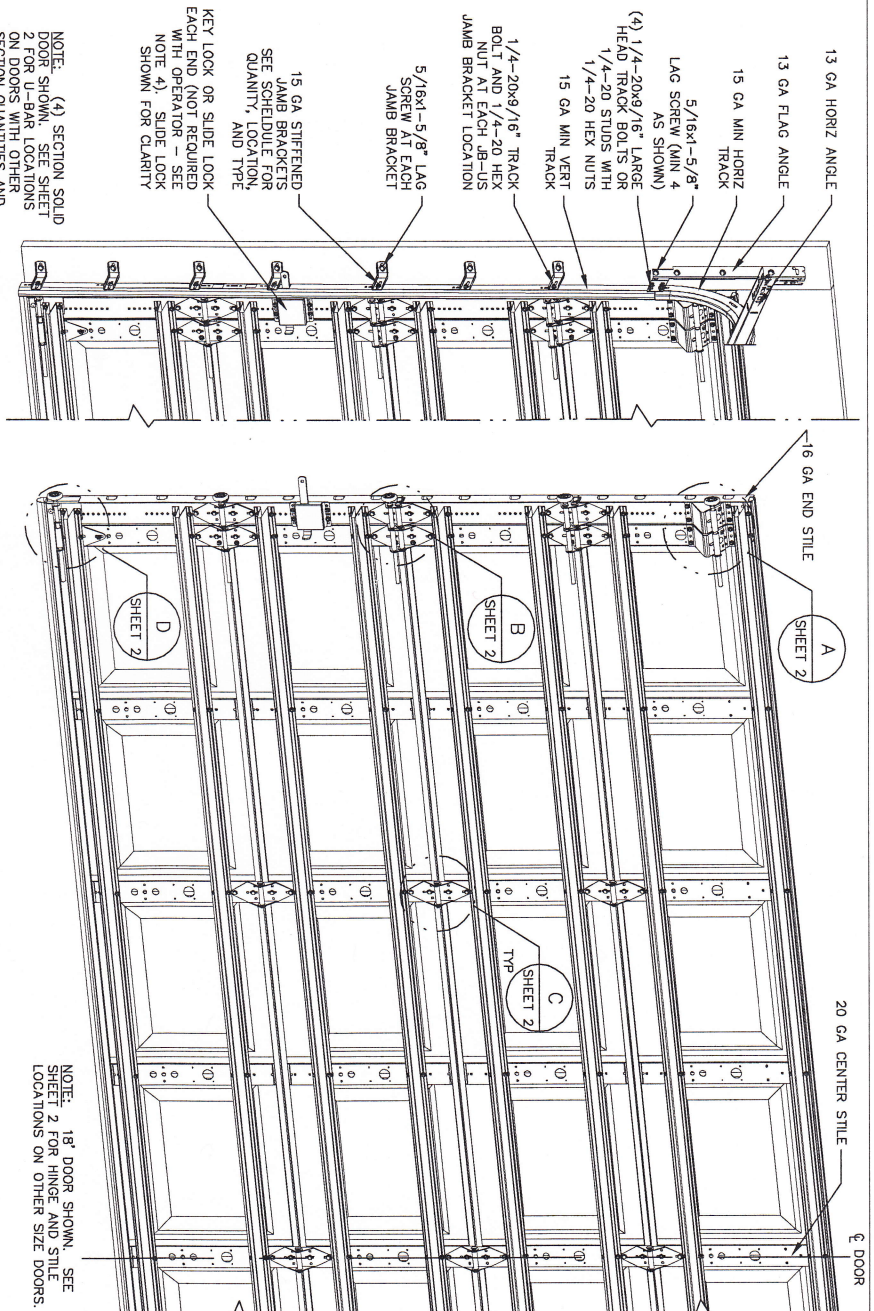
1. IMPACT RESISTANT GLAZING SYSTEM MAY BE INSTALLED IN TOP OR INTERMEDIATE SECTION (WITH OR WITHOUT DECORATIVE INSERTS). GLAZING SHALL BE 1/4" POLYCARBONATE. MAXIMUM GLAZING DIMENSIONS SHALL BE 1" x 17" CUTOUT. FASTENED WITH #8 X 1" SNS. 3X ALONG THE HORIZONTAL AND 2X ALONG THE VERTICAL. SEE DETAIL E ON SHEET 2 FOR ASSEMBLY DETAILS.
2. NON-IMPACT RESISTANT GLAZING OPTION - #90" MINIMUM SSB GLAZING IN MOLDED FRAMES SCREWED TOGETHER WITH A MINIMUM OF (10) #8x1" SCREWS INSTALLED IN TOP OR INTERMEDIATE SECTION (WITH OR WITHOUT DECORATIVE INSERTS) MEETS UNIFORM STATIC WIND PRESSURES SHOWN ON THIS DRAWING. GLAZING SHALL HAVE A MAXIMUM HEIGHT OF 10.69' AND A MAXIMUM LENGTH OF 16.94'. GLAZING IS NOT IMPACT RESISTANT AND DOES NOT MEET THE REQUIREMENTS FOR WIND-BORNE DEBRIS REGIONS.
3. WNTL OR WOOD DOOR STOP NAILED A MAXIMUM OF 6" O.C. MUST OVERLAP TOP AND BOTH ENDS OF PANELS MINIMUM 7/16" TO MEET NEGATIVE PRESSURES.
4. KEY LOCK, SLIDE LOCKS, OR OPERATOR REQUIRED.
5. LOUVER OPTION - 040" MINIMUM LOUVERS IN MOLDED FRAMES SCREWED TOGETHER WITH A MINIMUM OF (10) #8x1" SCREWS INSTALLED IN THE BOTTOM SECTION. LOUVERS ARE NOT IMPACT RESISTANT AND DO NOT MEET THE REQUIREMENTS FOR WIND-BORNE DEBRIS REGIONS.
6. SECTION STEEL TO HAVE A MINIMUM 28 GA THICKNESS.
7. THE DESIGN OF THE SUPPORTING STRUCTURAL ELEMENTS SHALL BE THE RESPONSIBILITY OF THE ARCHITECT. REFER TO THE ARCHITECT'S DRAWING FOR STRUCTURE AND IN ACCORDANCE WITH CURRENT BUILDING CODES FOR THE LOADS LISTED ON THIS DRAWING.
8. DOOR JAMB TO BE MINIMUM 2x4 STRUCTURAL GRADE LUMBER. REFER TO JAMB CONNECTION SUPPLEMENT FOR ATTACHMENT TO SUPPORTING STRUCTURE.
9. FOR LOW HEAD ROOM LIFT CONDITIONS, TOP BRACKET SHALL BE A 13 GA LHR 7/4 TOP BRACKET WITH A MINIMUM OF (3) 1/4"-14x7/8" SELF-DRILLING GRAMPTITE SCREWS IN LIEU OF THE BRACKET SHOWN ON THIS DRAWING. U-BAR ON BRACKET SHALL BE INSTALLED ON TOP OF LHR TOP BRACKETS.

SUPERIMPOSED DESIGN PRESSURE LOADS ON SUPPORTING STRUCTURE

| | |
|------------|-------------------------------|
| DOOR WIDTH | UNIFORM LOAD EACH JAMB (P-LF) |
| 17'-0" | +292.4/-325.6 |
| 18'-0" | +308.6/-344.7 |

Mark David
7/16/12

WINDLOAD CONSTRUCTION DETAILS
 2501 S. LINDALE, TX 79687
 F.L. PE 77613
 TX PE 108291
 WINDLOAD CONSTRUCTION DETAILS
 WINDLOAD CONSTRUCTION DETAILS
 WINDLOAD CONSTRUCTION DETAILS



NOTE: (4) SECTION SOLID DOOR SHOWN. SEE SHEET 2 FOR U-BAR LOCATIONS ON DOORS WITH OTHER SECTION QUANTITIES AND SEE NOTES 1 AND 2 THIS SHEET FOR GLAZING OPTIONS.

JAMB BRACKET SCHEDULE

| DOOR HEIGHT | NO. OF JAMB BRACKETS (EACH JAMB) | NO. OF JAMB BRACKETS | LOCATION OF CENTERLINE OF JAMB BRACKETS MEASURED FROM BOTTOM OF TRACK (ALL DIMENSIONS ± 2") |
|-------------|----------------------------------|----------------------|--|
| 6'-6" | 4 | 7 | 7" (JB-US), 10" (JB-US), 21-3/4" (JB-US), 29-3/4" (JB-US), 39" (JB-US), 57-1/4" (JB-US) |
| 7'-0" | 4 | 7 | 7" (JB-US), 10" (JB-US), 21-3/4" (JB-US), 29-3/4" (JB-US), 42" (JB-US), 52-1/2" (JB-US), 63-1/4" (JB-US) |
| 7'-6" | 5 | 9 | 7" (JB-US), 10" (JB-US), 18-3/4" (JB-US), 26-3/4" (JB-US), 36" (JB-US), 45" (JB-US), 54-1/4" (JB-US), 63" (JB-US), 74-1/2" (JB-US) |
| 8'-0" | 5 | 9 | 7" (JB-US), 10" (JB-US), 21-3/4" (JB-US), 29-3/4" (JB-US), 39" (JB-US), 48" (JB-US), 57-1/2" (JB-US), 66" (JB-US), 75-1/2" (JB-US) |
| > 8'-0" | | | SEE NOTE BELOW |

NOTE: (JB-US) FOLLOWING DIMENSION DENOTES SLOTTED JAMB BRACKET ATTACHED TO TRACK WITH 1/4"-20x9/16" TRACK BOLT AND NUT AS SHOWN ABOVE. ALL DOORS GREATER THAN 8' IN HEIGHT REQUIRE USE OF CONTINUOUS WALL ANGLE. SEE SUPPLEMENT TRACK CHART FOR DETAILS.

REVISIONS

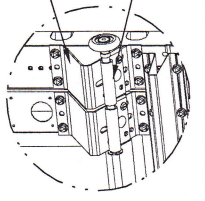
- P1 MODIFIED NOTES TO STATE THAT LOUVERS ARE NOT IMPACT RESISTANT. GRT 6/29/07
- P2 ADDED IMPACT RESISTANT GLAZING. ADDED DETAIL E SHEET 2 FOR GLAZING. ADDED MAX GLAZING DIMENSION TO NOTES SHEET 1. MODIFIED JAMB BRACKET SCHEDULE. ADDED TRACK NOTE. GRT 11/10/07
- P3 MODIFIED LOUVER OPTION. ADDED TEXAS LICENSE NUMBER TO TITLE BLOCK. GRT 9/19/08
- P4 UPDATED TITLE BLOCK AND IMPACT GLAZING GRT 4/16/12

Wayne Dalton

A DIVISION OF OVERHEAD DOOR CORP
 3195 ADDISON DRIVE
 PENSACOLA, FLORIDA 32514
 (850) 474-9890

| | | | |
|---|-------------------------|-------------------------|---------|
| STATIC PRESSURE RATINGS | APPROVED SIZES | SCALE: N.T.S. | SIZE: A |
| DESIGN (PSF): +34.40/-38.30 | MAX WIDTH: 18'-0" | DATE | NAME |
| TEST (PSF): +51.60/-57.45 | MAX HEIGHT: 14'-0" | 5/29/06 | GRT |
| IMPACT/CYCLIC RATED (YES/NO): YES | MAX SECTION HEIGHT: 21" | CHECKED | MRB |
| MODELS 8000/8100 | | SHEET 1 OF 2 | |
| WINDLOAD SPECIFICATION OPTION CODE 1142 | | DRAWING PART NO. 327022 | REV. P4 |

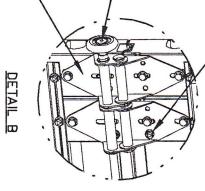
13 GA ROLLER SLIDE ATTACHED TO BRACKET WITH 5/16-18 BOLT & NUT IN CENTER SLOT AND 1/4-20x9/16" TRACK BOLT & 1/4-20 HEX NUT THROUGH ANY TWO ALIGNING HOLES



DETAIL A

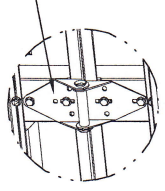
ADD (2) 1/4-14x7/8" SELF-DRILLING GRIPPIE SCREWS (INSIDE OF EACH INSIDE END HINGE)

2" STEEL ROLLER WITH 9" GRADE 1/4x OR EQUIVALENT STEM AND 1/16" PUSHOUT AT EACH ROLLER LOCATION, 1/4" MAX BETWEEN PUSHOUT AND BRACKET OR HINGE



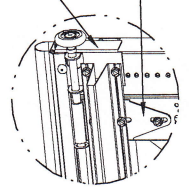
DETAIL B

14 GA WIDE BODY END HINGE ATTACHED WITH (4) 1/4-14x5/8" SELF-TAPPING SCREWS



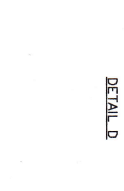
DETAIL C

14 GA WIDE BODY INTERMED HINGE ATTACHED WITH (4) 1/4-14x5/8" SELF-TAPPING SCREWS



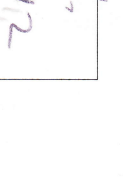
DETAIL D

12 GA EXTENSION BRACKET ATTACHED WITH (3) 1/4-14x7/8" SELF-DRILLING GRIPPIE SCREWS (2 THROUGH STRUT AND BRACKET)



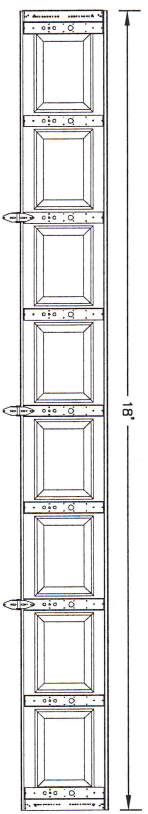
DETAIL E

14 GA BOTTOM BRACKET ATTACHED WITH (2) 1/4-14x7/8" SELF-DRILLING GRIPPIE SCREWS THROUGH STRUT AND BOTTOM BRACKET AND (1) 1/4-14x5/8" SELF-DRILLING TAMPER RESISTANT SCREW

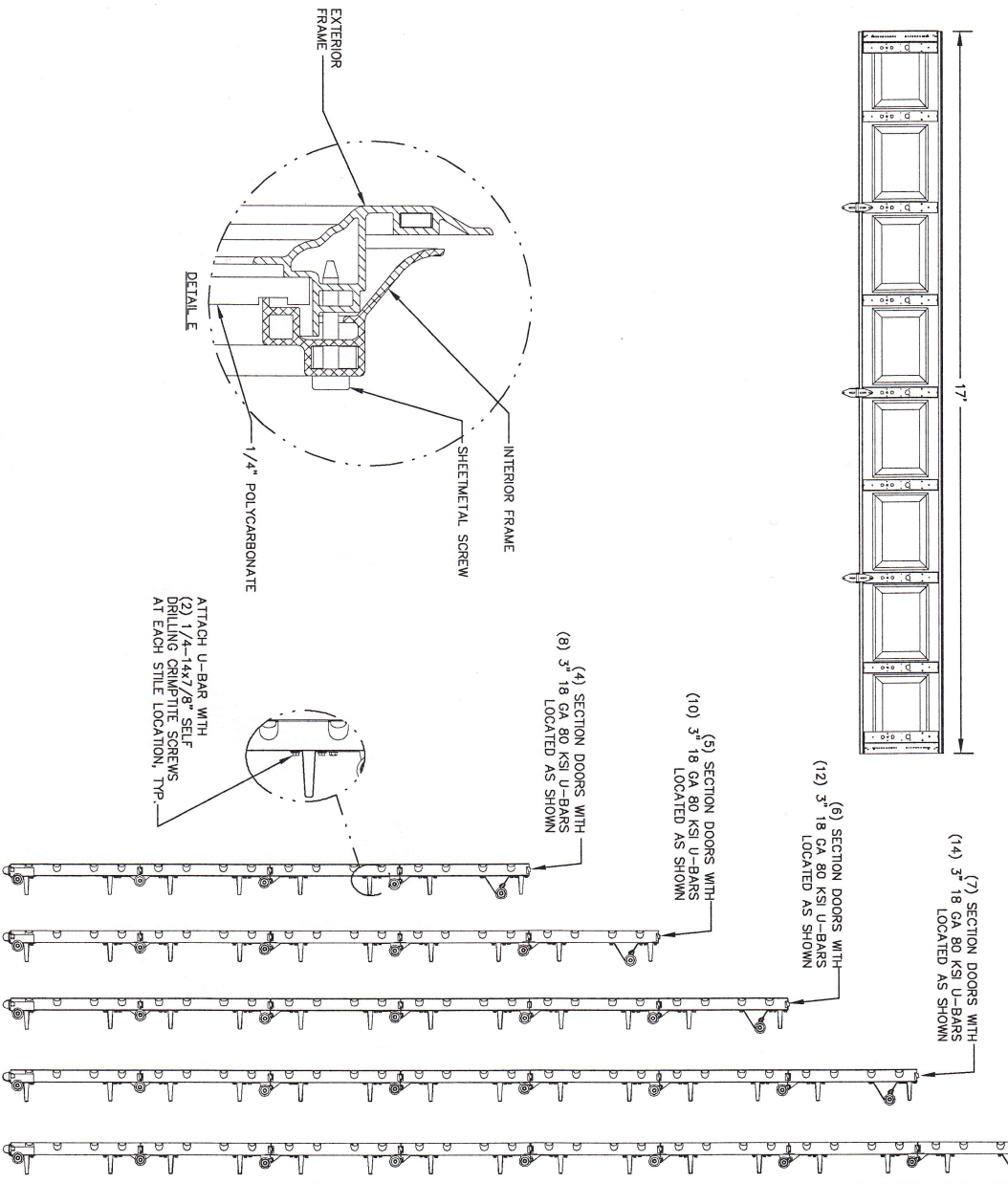


DETAIL F

CENTER STILE & INTERMEDIATE HINGE LOCATIONS



U-BAR LOCATIONS



REVISIONS

| | | |
|----|---|--------------|
| P1 | MODIFIED NOTES TO STATE THAT U-BARS ARE NOT IMPACT RESISTANT | GRT 6/29/07 |
| P2 | ADDED IMPACT RESISTANT GLAZING. ADDED DETAIL E SHEET 2 FOR GLAZING. ADDED MAX GLAZING DIMENSION TO NOTES SHEET 1. MODIFIED JAMB BRACKET SCHEDULE. ADDED TRACK NOTE. | GRT 11/10/07 |
| P3 | MODIFIED LULLIVER OPTION. ADDED TEXAS LICENSE NUMBER TO TITLE BLOCK. | GRT 9/19/08 |
| P4 | UPDATED TITLE BLOCK AND IMPACT GLAZING | GRT 4/16/12 |

Mark Dalton
7/12/12

MARK A. DALTON, PE
2801 S. STATE HWY 121, SUITE 200
LEWISVILLE, TX 75057
TX PE 106291

Wayne Dalton

A DIVISION OF OVERHEAD DOOR CORP.
3395 ADDISON DRIVE
PENSACOLA, FLORIDA 32514
(850) 474-9890

| | | | | | | | |
|---|---------------|---------------------|--------|-------------------------|---------|---------|--|
| STATIC PRESSURE RATINGS | | APPROVED SIZES | | SCALE: N.T.S. | | SIZE: A | |
| DESIGN (PSF): | +34.40/-38.30 | MAX WIDTH: | 18'-0" | DATE | | NAME | |
| TEST (PSF): | +51.60/-57.45 | MAX HEIGHT: | 14'-0" | DRAWN | 5/23/06 | GRT | |
| IMPACT/CYCLIC RATED (YES/NO): | YES | MAX SECTION HEIGHT: | 21' | CHECKED | 1/22/07 | MRB | |
| MODELS 8000/8100 | | | | SHEET 2 OF 2 | | | |
| WINDLOAD SPECIFICATION OPTION CODE 1142 | | | | DRAWING PART NO. 327022 | | | |
| | | | | REV. P4 | | | |