

**NOTES:**

1. NON IMPACT GLAZING OPTIONS:  
 16 X 9.75 CLEAR OPENING  
 36.75 X 9.75 CLEAR OPENING  
 GLAZING SSB (0.090") MINIMUM.  
 MAY INCLUDE DECORATIVE INSERTS  
 INSTALLED IN TOP OR INTERMEDIATE SECTION.  
 NOT AVAILABLE IN MORE THAN ONE SECTION.  
 DOES NOT SATISFY WINDBORNE-DEBRIS.

2. IMPACT GLAZING OPTION:  
 16.75 X 9.75 CLEAR OPENING  
 GLAZING 1/4" GROOVED POLYCARBONATE  
 ALUMINUM FRAMES WITH 10 SCREWS MAY  
 INCLUDE DECORATIVE INSERTS INSTALLED IN  
 TOP OR INTERMEDIATE SECTION.  
 NOT AVAILABLE IN MORE THAN ONE SECTION.  
 SEE ASSEMBLY DETAIL ON SHEET 2.

3. VINYL OR WOOD DOOR STOP NAILED A  
 MAXIMUM OF 6" O.C. MUST OVERLAP TOP  
 AND BOTH ENDS OF PANELS MINIMUM 7/16"  
 TO MEET NEGATIVE PRESSURES.

4. KEY LOCK, SLIDE LOCK, OR OPERATOR  
 REQUIRED.

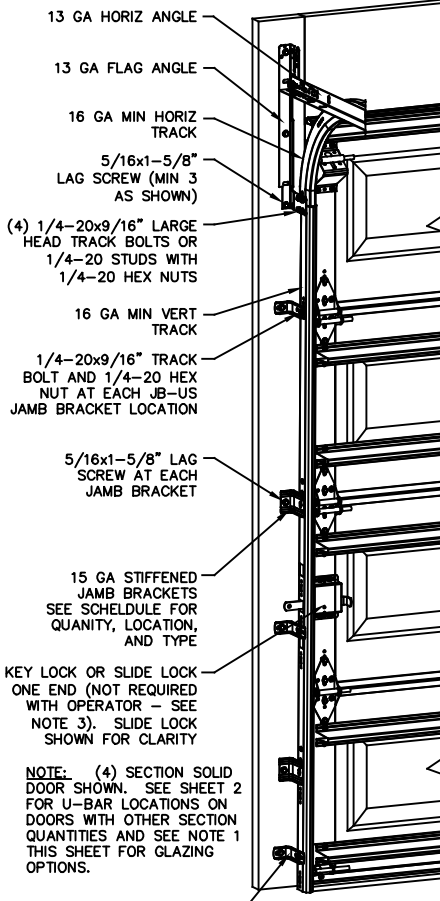
5. LOUVER OPTION - .032" MINIMUM  
 LOUVERS IN MOLDED FRAMES SCREWED  
 TOGETHER WITH A MINIMUM OF (10) #8x1"  
 SCREWS INSTALLED IN THE BOTTOM SECTION.  
 LOUVERS ARE NOT IMPACT RESISTANT AND  
 DO NOT MEET THE REQUIREMENTS FOR  
 WIND-BORNE DEBRIS REGIONS.

6. SECTION STEEL TO HAVE A MINIMUM 25  
 GA THICKNESS.

7. THE DESIGN OF THE SUPPORTING  
 STRUCTURAL ELEMENTS SHALL BE THE  
 RESPONSIBILITY OF THE PROFESSIONAL OF  
 RECORD FOR THE BUILDING OR STRUCTURE  
 AND IN ACCORDANCE WITH CURRENT  
 BUILDING CODES FOR THE LOADS LISTED ON  
 THIS DRAWING.

8. DOOR JAMB TO BE GRADE 2 SOUTHERN  
 PINE. REFER TO JAMB CONNECTION  
 SUPPLEMENT FOR ATTACHMENT TO  
 SUPPORTING STRUCTURE.

9. FOR LOW HEAD ROOM LIFT CONDITIONS,  
 TOP BRACKET SHALL BE A 13 GA LHR 7/4  
 TOP BRACKET WITH A MINIMUM OF (3)  
 1/4-14x7/8" SELF DRILLING CRIMPITITE  
 SCREWS IN LIEU OF THE BRACKET SHOWN ON  
 THIS DRAWING. U-BAR ON TOP SECTION  
 SHALL BE INSTALLED ON TOP OF LHR TOP  
 BRACKETS.



12 GA ROLLER SLIDE ATTACHED TO BRACKET WITH 5/16-18 BOLT & NUT IN CENTER SLOT AND 1/4-20x9/16" TRACK BOLT & 1/4-20 HEX NUT THROUGH ANY TWO ALIGNING HOLES

12 GA COMMERCIAL 'A' FRAME TOP BRACKET ATTACHED WITH (4) 1/4-14x7/8" SELF DRILLING CRIMPITITE SCREWS

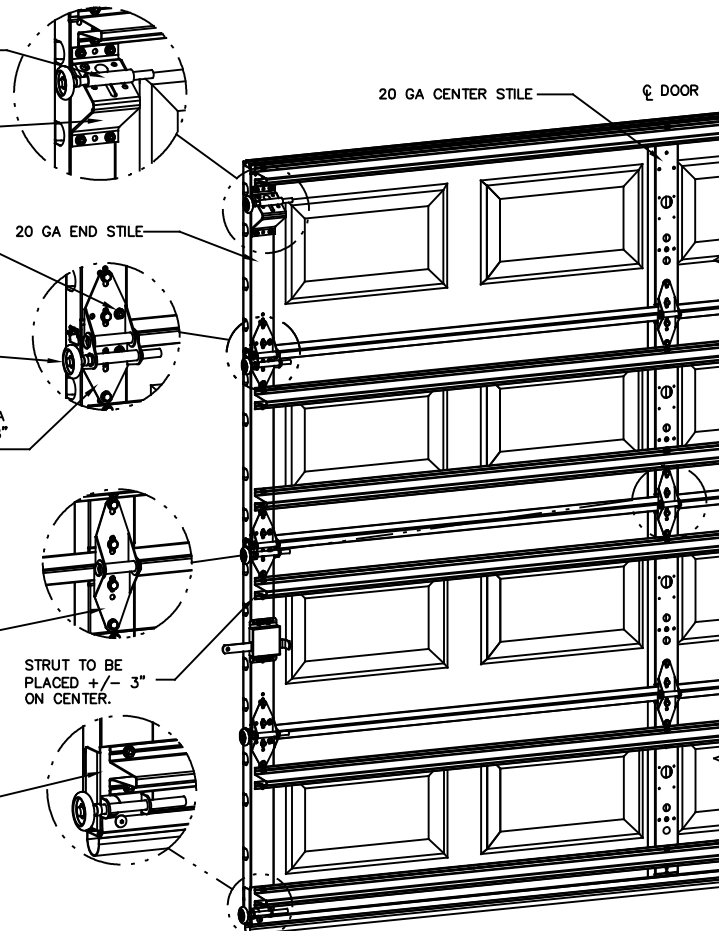
ADD (2) 1/4-14x7/8" SELF DRILLING CRIMPITITE SCREWS (INSIDE OF EACH END HINGE)

2" NYLON STORMGARD ROLLER WITH 4-1/2" STEM EACH ROLLER LOCATION. OPTIONAL- 11 BALL BEARING NYLON ROLLER

#1 HINGE IS 14 GA  
 #2 HINGE IS 13 GA  
 #3 HINGE (AND ALL ABOVE) ARE 13 GA HINGE ATTACHED WITH (4) 1/4-14x5/8" SELF TAPPING SCREWS

18 GA NARROW BODY INTERMEDIATE HINGE ATTACHED WITH (4) 1/4-14x5/8" SELF TAPPING SCREWS

14 GA BOTTOM BRACKET ATTACHED WITH (2) 1/4-14x7/8" SELF DRILLING CRIMPITITE SCREWS AND (1) 1/4-14x5/8" SELF DRILLING RED SCREW. (12 GA FOR IMPACT RATED ONLY)



**SUPERIMPOSED DESIGN PRESSURE LOADS ON SUPPORTING STRUCTURE**

DOOR WIDTH	DOOR HEIGHT	UNIFORM LOAD EACH JAMB (PLF)
6'-0"	ALL	+124.0/-140.0
8'-0"	ALL	+139.5/-157.5

**JAMB BRACKET SCHEDULE**

DOOR HEIGHT	NO. OF SECTIONS	NO. OF JAMB BRACKETS (EACH JAMB)	TRACK TYPE	LOCATION OF CENTERLINE OF JAMB BRACKETS MEASURED FROM BOTTOM OF TRACK (ALL DIMENSIONS ± 2")
6'-6"	4	5	QI	2" (JB-US), 14" (QI), 34" (JB-US), 44" (QI), 56" (JB-US)
6'-6"	4	5	FAT	2" (JB-US), 10" (JB-US), 25-3/4" (JB-US), 39" (JB-US), 57-1/4" (JB-US)
7'-0"	4	5	QI	2" (JB-US), 14" (QI), 29-1/2" (JB-US), 44" (QI), 63-1/4" (JB-US)
7'-0"	4	5	FAT	2" (JB-US), 10" (JB-US), 29-3/4" (JB-US), 42" (JB-US), 63-1/4" (JB-US)
7'-6"	5	6	QI	2" (JB-US), 14" (QI), 28-1/2" (JB-US), 43" (QI), 62-1/2" (QI), 72" (JB-US)
7'-6"	5	6	FAT	2" (JB-US), 10" (JB-US), 26-3/4" (JB-US), 45" (JB-US), 63" (JB-US), 74-1/2" (JB-US)
8'-0"	5	6	QI	2" (JB-US), 14" (QI), 34" (JB-US), 46" (QI), 58" (JB-US), 66-1/2" (QI)
8'-0"	5	6	FAT	2" (JB-US), 10" (JB-US), 29-3/4" (JB-US), 48" (JB-US), 57-1/2" (JB-US), 77-1/2" (JB-US)
> 8'-0"				SEE NOTE BELOW

**NOTE:**

(JB-US) FOLLOWING DIMENSION DENOTES SLOTTED JAMB BRACKET ATTACHED TO TRACK WITH 1/4-20x9/16" TRACK BOLT AND NUT.  
 (QI) FOLLOWING DIMENSION DENOTES QUICK INSTALL JAMB BRACKET INSTALLED IN BUTTERFLY SLOT. NO ADDITIONAL HARDWARE NEEDED TO ATTACH TO TRACK.  
 ALL DOORS GREATER THAN 8' IN HEIGHT REQUIRE USE OF CONTINUOUS WALL ANGLE. SEE SUPPLEMENT TRACK CHART FOR DETAILS.

**Wayne Dalton**  
 GARAGE DOORS  
 A DIVISION OF OVERHEAD DOOR CORP.  
 3395 ADDISON DRIVE  
 PENSACOLA, FLORIDA 32514  
 (850) 474-9890

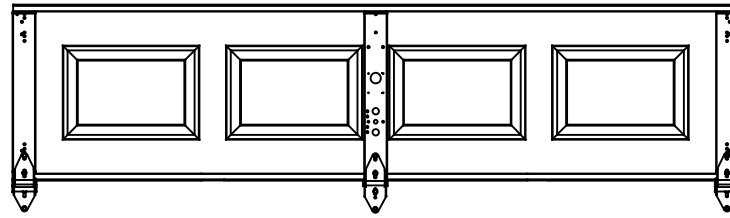
STATIC PRESSURE RATINGS		APPROVED SIZES		SCALE: N.T.S.	SIZE: A
DESIGN (PSF):	+31.00/-35.00	MAX WIDTH:	9'-0"	DATE	NAME
TEST (PSF):	+46.50/-52.50	MAX HEIGHT:	14'-0"	3/9/18	ESC
IMPACT/CYCLIC RATED (YES/NO): YES		MAX SECTION HEIGHT: 21"		CHECKED	DJK
MODELS 8000/8100/8200				SHEET 1 OF 2	
WINDLOAD SPECIFICATION OPTION CODE 1105				DRAWING PART NO.	REV.
				362403	P1

**REVISIONS**  
 PO NEW WINDLOAD DESIGN  
 ER 31052  
 ESC 6/29/18  
 P1 UPDATED NOTES  
 ADDED LHR DETAIL ER  
 31052  
 ESC 2/12/19

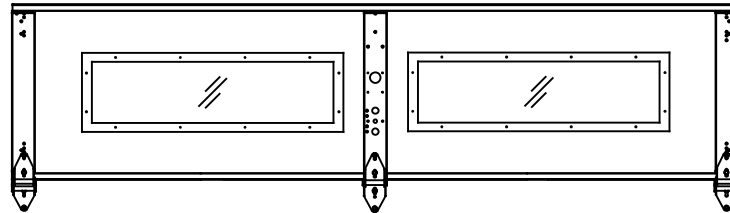
REVISIONS

PO NEW WINDLOAD DESIGN  
ER 31052  
ESC 6/29/18  
P1 UPDATED NOTES  
ADDED LHR DETAIL ER  
31052  
ESC 2/12/19

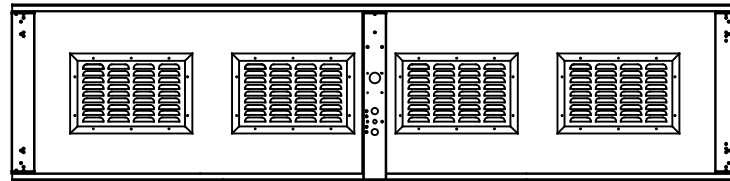
CENTER STILE & INTERMEDIATE HINGE LOCATIONS



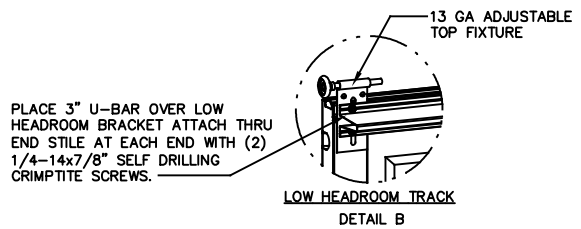
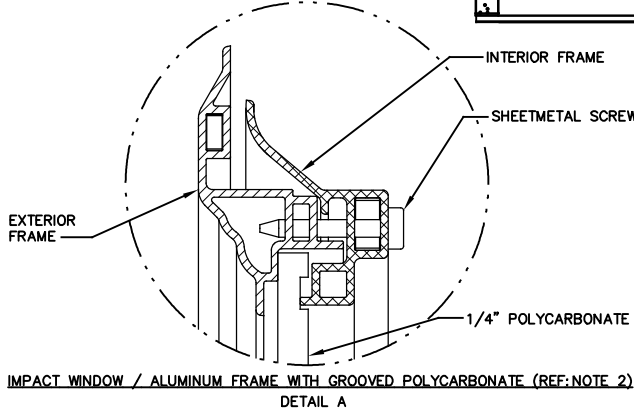
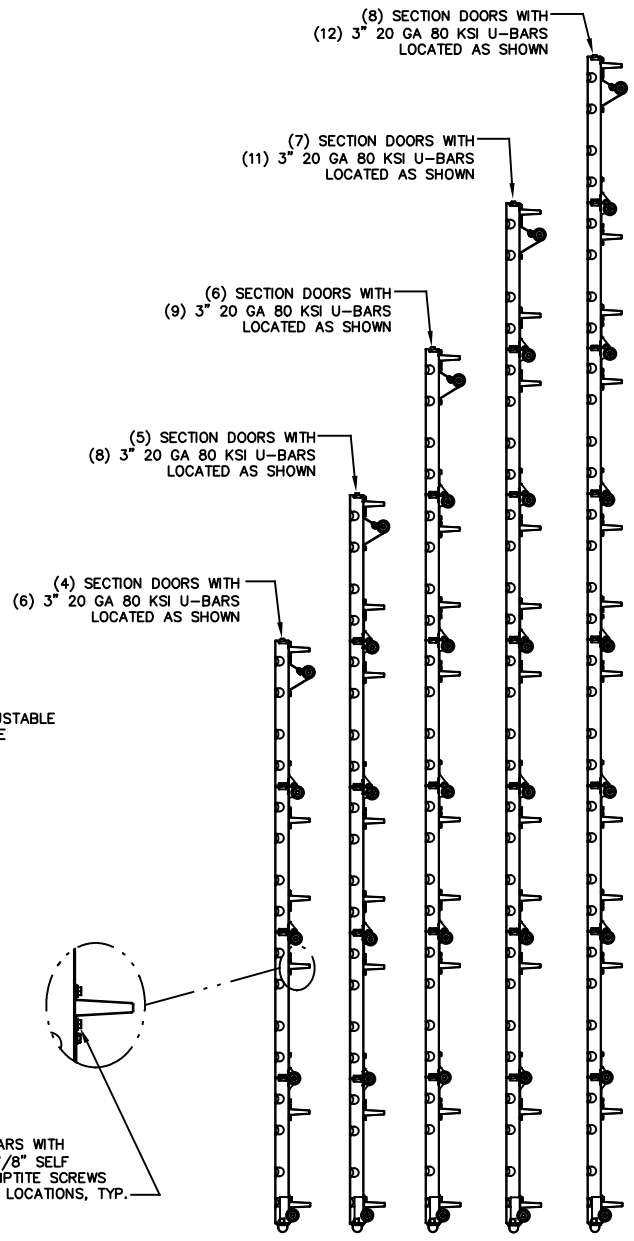
SHORT LITE GLAZING LAYOUT



LOUVER - OPTIONAL IN BOTTOM SECTION



U-BAR LOCATIONS



ATTACH U-BARS WITH  
(2) 1/4-14x7/8" SELF  
DRILLING CRIMP TITE SCREWS  
AT ALL STILE LOCATIONS, TYP.

PROFESSIONAL ENGINEER'S SEAL PROVIDED ONLY FOR  
VERIFICATION OF WINDLOAD CONSTRUCTION DETAILS.

JOHN E. SCATES, PE  
2560 KING ARTHUR BLVD #124-54  
LEWISVILLE, TX 75056  
FL PE 51737  
TX PE 56308/F2203

**Wayne Dalton**  
GARAGE DOORS

A DIVISION OF OVERHEAD DOOR CORP.  
3395 ADDISON DRIVE  
PENSACOLA, FLORIDA 32514  
(850) 474-9890

STATIC PRESSURE RATINGS		APPROVED SIZES	SCALE: N.T.S.	SIZE: A
DESIGN (PSF):	+31.00/-35.00	MAX WIDTH: 9'-0"	DATE	NAME
TEST (PSF):	+46.50/-52.50	MAX HEIGHT: 14'-0"	DRAWN 3/9/18	ESC
IMPACT/CYCLIC RATED (YES/NO):	YES	MAX SECTION HEIGHT: 21"	CHECKED	DJK
MODELS 8000/8100/8200			SHEET 2 OF 2	
WINDLOAD SPECIFICATION OPTION CODE 1105			DRAWING PART NO. 362403	REV. P1