

Door Height	Section Quantity	Strut Quantity	Track Brackets Per Side
6'-0"	4	6	4
6'-3" to 7'-0"	4	7	4
7'-6" to 8'-0"	5	8	5
8'-3" to 8'-9"	5	9	5
9'-0"	6	9	6
9'-3" to 10'-0"	6	10	6
10'-3" to 10'-6"	6	11	6
10'-9" to 11'-0"	7	11	7
11'-3" to 12'-0"	7	12	7
12'-3"	7	13	7
12'-6" to 13'-0"	8	13	8
13'-3" to 14'-0"	8	14	8

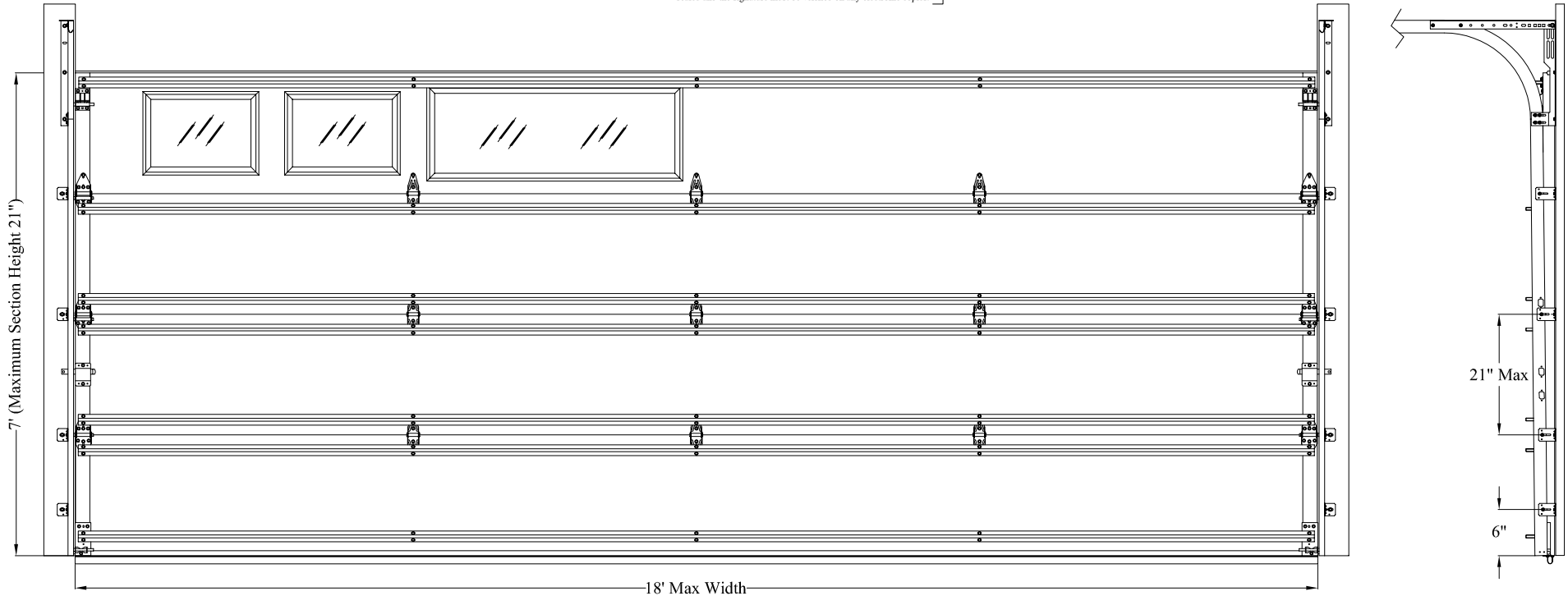
Note: Maximum door height is 14'. Consult Sheet 3 for Strut and Section Location Chart. Detail views shown on Sheet 2.

Model Numbers Available
3600 Series

REVISIONS			
REV	DESCRIPTION	DATE	APPROVED
01	UPDATED FOR TDI COMPLIANCE	07/11/2022	DMK


John E. Scates, PE  
 2560 King Arthur Blvd. Ste 124-54  
 Lewisville, TX 75056  
 FL PE 51737  
 TX PE 56308 / F-2203

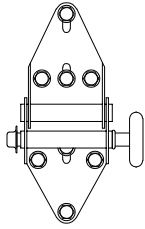
Printed copies of this document are not considered signed and sealed and the signature must be verified on any electronic copies. ]



**NOTE:**

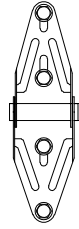
1. This product has been evaluated per ANSI/DASMA 108 and ASTM E330.
2. This product complies with the requirements of the 2018 IBC/IRC.
3. Doors with glazing not qualified for use in windborne debris regions.
4. This drawing provides windload assembly details for the claimed size and pressures.

<b>Max Size:</b> 18' x 14'  <b>Design Pressure:</b> +22.0/-24.5 PSF	 5700 NW 39th Street Riverside, MO 64150	<b>DESCRIPTION:</b> Wind Load Rated Residential Sandwich Sectional Garage Door 18' Wide 3600 Series Doors	
		<b>DRAWING NUMBER:</b> RS18A_22.0_24.5	<b>REV:</b> 01
<b>DRAWN BY:</b> DMK	<b>DATE DRAWN:</b> 9/25/20	<b>REV DATE:</b> 7/11/22	
<b>SIZE:</b> ANSI A	<b>SCALE:</b> NTS	<b>SHEET:</b> 1 of 3	



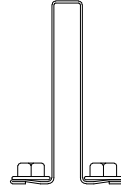
**End Hinge**

14 gauge galvanized steel end hinge attached with four 1/4" x 3/4" screws and four 1/4" x 5/8" self tapping screws.



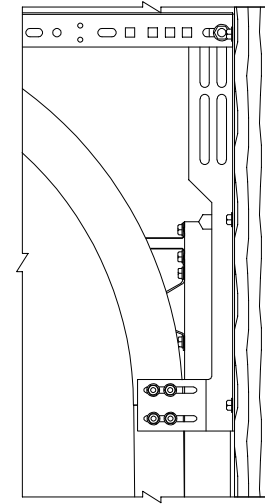
**Center Hinge**

18 gauge galvanized steel narrow or wide body hinge attached with four 1/4" x 3/4" screws.



**Struts**

3" x 1 7/8" 20 gauge 50 ksi hat strut attached with two 1/4" x 5/8" self-tapping screws per stile.



**Flag Bracket**

12 gauge galvanized steel flag bracket attached to wood jamb with three 5/16" x 1 5/8" wood lag screws and to the horizontal and vertical tracks with two 1/4" x 3/4" track bolts and nuts each.

**Horizontal Track and Angle**

Horizontal track and angle to suit with suitable back hang.

**Vertical Track**

2" galvanized steel track with a minimum thickness of .056".

**Strut Spacer**

1/8" spacer required between strut and top section only when 43" x 15" windows are used.

**Wood Jamb**

Vertical jambs are to be 2x6 Southern Yellow Pine (SYP) or better. Refer to DASMA TDS 161 or a licensed design professional for jamb configurations. Note: Preparation of jambs by others, and supporting structural elements must be capable of withstanding the rated windload.

**Stop Molding**

Stop molding (attached with minimum 6D headed nails or screws) is required, or door must overlap jambs by 5/16".

**Roller**

Minimum 7 ball steel roller or 10 ball nylon roller with 4" stem and push nuts on all hinge rollers.

**End Cap**

20 gauge galvanized steel end cap attached with one sheet metal screw.

**Bottom Bracket**

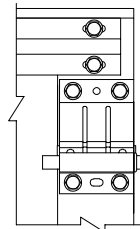
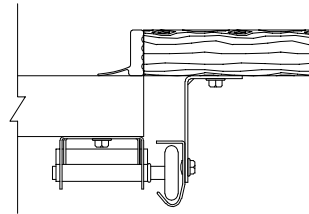
13 gauge galvanized steel bottom bracket attached with four 1/4" x 5/8" self-tapping screws (push nut not required on roller).

**Bottom Weatherstrip**

Aluminum extrusion with vinyl insert.

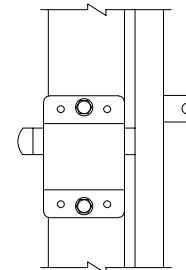
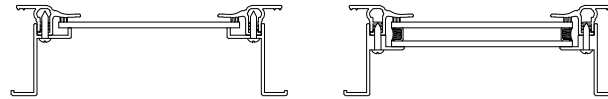
**Track Brackets**

2 1/4" wide x 12 gauge galvanized steel track bracket attached to wood jamb with one 5/16" x 1 5/8" wood lag screw and to vertical track with one 1/4" x 3/4" track bolt and nut. Note: Center distance between track brackets not to exceed 21".



**Top Fixture**

16 gauge galvanized steel top fixture with two bolt roller carrier and attached to door with four 1/4" x 5/8" self-tapping screws (push nut not required on roller).



**Locking Mechanism**

Doors must have either an electronic operator or locking device installed (inside slide lock shown, other lock types permitted). Note: Extension spring doors require locking point on each side if no electronic operator is installed.

**Windows (optional)**

Windows available in sizes listed below. Frames are molded plastic.

Frame	Max Daylight Opening	Fastener Pattern	Glazing Types
Short	18" x 12-1/2"	#8-5/8" (12) total, (3) along each horizontal edge & (3) along each vertical edge	1/8" DSB Annealed, 1/8" DSB Tempered, 0.100" Polycarbonate, and 1/2" IG Consisting of Two Pieces of Annealed or Tempered Glass With 1/4" Spacer
Ranch	38" x 11-1/2"	#8-5/8" (14) total, (5) along each horizontal edge & (2) along each vertical edge	1/8" DSB Annealed, 1/8" DSB Tempered, 1/2" IG Consisting of Two Pieces of Annealed or Tempered Glass With 1/4" Spacer
Carriage/Ranch Carriage	43" x 15"	#8-5/8" (18) total, (6) along each horizontal edge & (3) along each vertical edge	1/8" DSB Annealed and 1/8" DSB Tempered

Max Size:  
18' x 14'

Design Pressure:  
+22.0/-24.5 PSF



5700 NW 39th Street  
Riverside, MO 64150

**DESCRIPTION:**

Wind Load Rated Residential Sandwich Sectional Garage Door  
18' Wide 3600 Series Doors


<b>DRAWING NUMBER:</b> RS18A_22.0_24.5		<b>REV:</b> 01	
<b>DRAWN BY:</b> DMK	<b>DATE DRAWN:</b> 9/25/20	<b>REV DATE:</b> 7/11/22	
<b>SIZE:</b> ANSI A	<b>SCALE:</b> NTS	<b>SHEET:</b> 2 of 3	

### Strut and Sections Location Chart

Door Height	Section Heights	Strut Locations	Track Brackets
6 - 0	18 18 18 18	3 15.5 33.5 38.5 51.5 70	4
6 - 3	21 18 18 18	3 18.5 23.5 36.5 41.5 54.5 73	4
6 - 6	21 18 18 21	3 18.5 23.5 36.5 41.5 54.5 76	4
6 - 9	21 21 18 21	3 18.5 23.5 39.5 44.5 57.5 79	4
7 - 0	21 21 21 21	3 18.5 23.5 39.5 44.5 60.5 82	4
7 - 6	18 18 18 18 18	3 15.5 33.5 38.5 51.5 56.5 69.5 88	5
7 - 9	21 18 18 18 18	3 18.5 36.5 41.5 54.5 59.5 72.5 91	5
8 - 0	21 18 18 18 21	3 18.5 36.5 41.5 54.5 59.5 72.5 94	5
8 - 3	21 21 18 18 21	3 18.5 23.5 39.5 44.5 57.5 62.5 75.5 97	5
8 - 6	21 21 18 21 21	3 18.5 23.5 39.5 44.5 57.5 62.5 78.5 100	5
8 - 9	21 21 21 21 21	3 18.5 23.5 39.5 44.5 60.5 65.5 81.5 103	5
9 - 0	18 18 18 18 18 18	3 15.5 33.5 38.5 51.5 69.5 74.5 87.5 106	6
9 - 3	21 18 18 18 18 18	3 18.5 36.5 41.5 54.5 59.5 72.5 77.5 90.5 109	6
9 - 6	21 21 18 18 18 18	3 18.5 39.5 44.5 57.5 62.5 75.5 80.5 93.5 112	6
9 - 9	21 21 21 18 18 18	3 18.5 39.5 44.5 60.5 65.5 78.5 83.5 96.5 115	6
10 - 0	21 21 21 21 18 18	3 18.5 39.5 44.5 60.5 65.5 81.5 86.5 99.5 118	6
10 - 3	21 21 21 21 21 18	3 18.5 23.5 39.5 44.5 60.5 65.5 81.5 86.5 102.5 121	6
10 - 6	21 21 21 21 21 21	3 18.5 23.5 39.5 44.5 60.5 65.5 72.5 86.5 102.5 124	6
10 - 9	21 18 18 18 18 18 18	3 18.5 36.5 41.5 54.5 59.5 72.5 90.5 95.5 108.5 127	7
11 - 0	21 21 18 18 18 18 18	3 18.5 39.5 44.5 57.5 62.5 75.5 93.5 98.5 111.5 130	7
11 - 3	21 21 21 18 18 18 18	3 18.5 39.5 44.5 60.5 65.5 78.5 83.5 96.5 101.5 114.5 133	7
11 - 6	21 21 21 21 18 18 18	3 18.5 39.5 44.5 60.5 65.5 81.5 86.5 99.5 104.5 117.5 136	7
11 - 9	21 21 21 21 21 18 18	3 18.5 39.5 44.5 60.5 65.5 81.5 86.5 102.5 107.5 120.5 139	7
12 - 0	21 21 21 21 21 21 18	3 18.5 39.5 44.5 60.5 65.5 81.5 86.5 102.5 107.5 123.5 142	7
12 - 3	21 21 21 21 21 21 21	3 18.5 23.5 39.5 44.5 60.5 65.5 81.5 86.5 102.5 107.5 123.5 145	7
12 - 6	21 21 18 18 18 18 18 18	3 18.5 39.5 44.5 57.5 62.5 75.5 93.5 98.5 111.5 116.5 129.5 148	8
12 - 9	21 21 21 18 18 18 18 18	3 18.5 39.5 44.5 60.5 65.5 78.5 96.5 101.5 114.5 119.5 132.5 151	8
13 - 0	21 21 21 21 18 18 18 18	3 18.5 39.5 44.5 60.5 65.5 81.5 99.5 104.5 117.5 122.5 135.5 154	8
13 - 3	21 21 21 21 21 18 18 18	3 18.5 39.5 44.5 60.5 65.5 81.5 86.5 102.5 107.5 120.5 125.5 138.5 157	8
13 - 6	21 21 21 21 21 21 18 18	3 18.5 39.5 44.5 60.5 65.5 81.5 86.5 102.5 107.5 123.5 128.5 141.5 160	8
13 - 9	21 21 21 21 21 21 21 18	3 18.5 39.5 44.5 60.5 65.5 81.5 86.5 102.5 107.5 123.5 128.5 144.5 163	8
14 - 0	21 21 21 21 21 21 21 21	3 18.5 39.5 44.5 60.5 65.5 81.5 86.5 102.5 107.5 123.5 128.5 144.5 166	8

**NOTE:**

- 5. Sequential section heights left to right as stacked from floor to ceiling.
- 6. Individual strut locations in inches from bottom of door.
- 7. Section stacking order may be changed to accommodate window section placement or other factors. Strut locations shall be adjusted accordingly.

<p><b>Max Size:</b> 18' x 14'</p> <p><b>Design Pressure:</b> +22.0/-24.5 PSF</p>	 <p>5700 NW 39th Street Riverside, MO 64150</p>	<p><b>DESCRIPTION:</b> Wind Load Rated Residential Sandwich Sectional Garage Door 18' Wide 3600 Series Doors</p> <p><b>DRAWING NUMBER:</b> RS18A_22.0_24.5      <b>REV:</b> 01</p> <p><b>DRAWN BY:</b> DMK      <b>DATE DRAWN:</b> 9/25/20      <b>REV DATE:</b> 7/11/22</p> <p><b>SIZE:</b> ANSI A      <b>SCALE:</b> NTS      <b>SHEET:</b> 3 of 3</p>
--	---	--