

NOTE: DOUBLE TRACK LOW HEADROOM, HI-LIFT TRACK, FOLLOW-THE-ROOF TRACK, AND VERTICAL LIFT TRACK ARE AVAILABLE OPTIONS. 3" TRACK ALSO AVAILABLE.

MAX 12'-2" WIDE X 18'-0" HIGH

MODELS AVAILABLE (CLOPAY/ HOLMES/ IDEAL)
 MODELS 524, 520/ 224/ C4ST, COST
 INSULATED MODELS 524S, 520S, 524V/ 224S/ C4SS, COSS, C4SV

REVISIONS					
REV. NO.	ZONE:	DATE:	ECN NO.	APPVD:	DESCRIPTION
08	-	05/2005	-	-	UPDATED CODE REF., SPECIFIED OPTIONAL ACRYLIC.
09	-	10/2005	-	-	ADDED ROLLER OPTION
10	-	11/2008	-	-	UPDATED JAMB ATTACHMENT; ADDED MPC.
11	-	02/2012	-	-	UPDATED WINDCODE CHART
12	-	08/2012	-	-	REVISED FOR TDI
13	-	06/2013	-	-	REMOVED ACRYLIC/WIRE GLAZING. SPECIFIED FV DIMENSIONS.
14	-	08/2016	-	-	REMOVED WIND SPEED TABLE.

SECTIONS ARE 1-7/8" THK PANELS ROLL FORMED OF .022" MIN. HOT DIPPED GALVANIZING, ROLL FORMED STEEL.

THE OPTIONAL GLAZING SHOWN ON THIS DRAWING MEETS THE WIND LOAD REQUIREMENTS OF THE FLORIDA BUILDING CODE OR INTERNATIONAL BUILDING CODE BUT DOES NOT MEET THE IMPACT RESISTANT REQUIREMENT FOR WINDBORNE DEBRIS REGIONS (REF. CHAPTER 16 FBC/IBC)

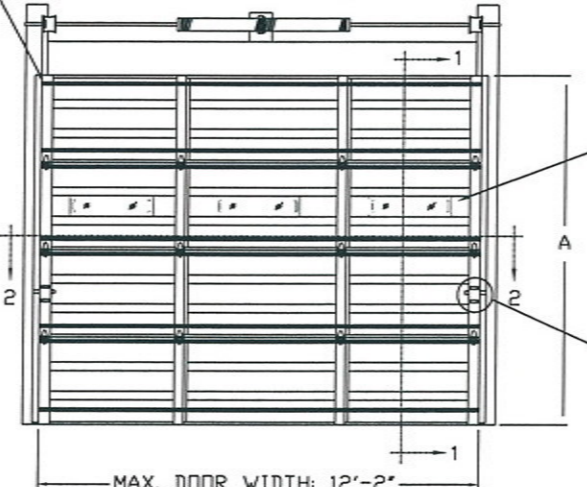
DOOR HEIGHT 'A'	NUMBER OF SECTIONS
UP TO 8'-0"	4
8'-3" THRU 10'-0"	5
10'-3" THRU 12'-0"	6
12'-3" THRU 14'-0"	7
14'-3" THRU 16'-0"	8
16'-3" THRU 18'-0"	9

MAX. SECTION HEIGHT: 24"



OPTIONAL ALUMINUM FULL VISION WINDOW LITE SECTIONS AVAILABLE (1/8" DSB) FULL VISION SECTIONS TO HAVE 2" X 2" X 1/8" L-ANGLE HORIZONTAL REINFORCEMENT. L-ANGLES ATTACHED TO THE REINFORCING RIB WITH (2) 1/4"-20 X 5/8" HEX HEAD BOLTS AND NUTS AT EVERY HINGE LOCATION.

3" x 20 GA. GALV. STEEL U-BAR. TWO U-BARS PER DOOR SECTION. U-BARS ATTACHED AT EACH STILE LOCATION WITH TWO 1/4" X 3/4" SELF TAPPING SCREWS.



OPTIONAL 24" x 6" POLYPROPYLENE SCREW TOGETHER TYPE DSB WINDOW LITES AVAILABLE.

TWO POINT LOCKING REQ'D

SECTION 1 - 1

BOTTOM SECTION REINFORCED WITH TEMPERED ALUMINUM EXTRUSION WITH INTEGRAL RETAINER FOR FLEXIBLE VINYL ASTRAGAL

2" 10 BALL SHORT STEM STEEL ROLLER WITH STEEL OR NYLON TIRE

ADJUSTABLE TOP ROLLER BRACKET OF 12 GA. GALV. STEEL, INSTALLED ON DOOR WITH (4) #14 X 5/8" LG SHEET METAL SCREWS

3" 20-GA. U-BARS. (2) U-BARS PER SECTION. U-BARS ATTACHED AT EACH STILE LOCATION WITH (2) 1/4" X 3/4" SELF-TAPPING SCREWS.

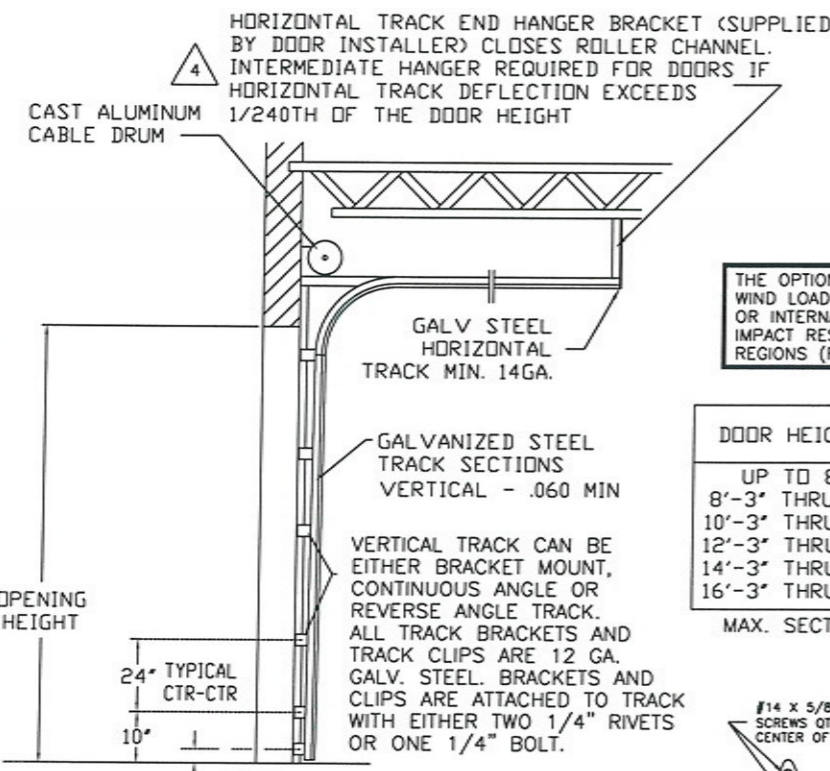
END HINGES OF MINIMUM 14 GA. GALV. STEEL, FASTENED WITH (4) #14 X 5/8" LG. SHT. MTL. SCREWS AND (4) 1/4" X 3/4" SELF-TAPPING SCREWS.

BOTTOM ROLLER BRACKET OF 13 GA. GALV. STEEL, FASTENED WITH (4) #14 X 5/8" LG SHT. MTL. SCREWS

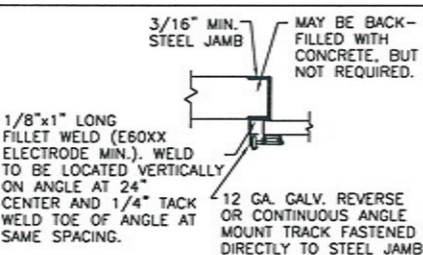
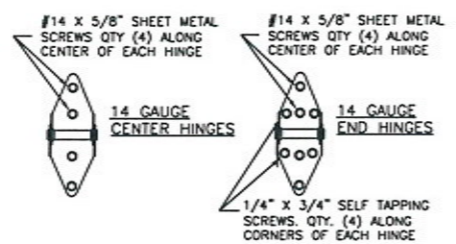
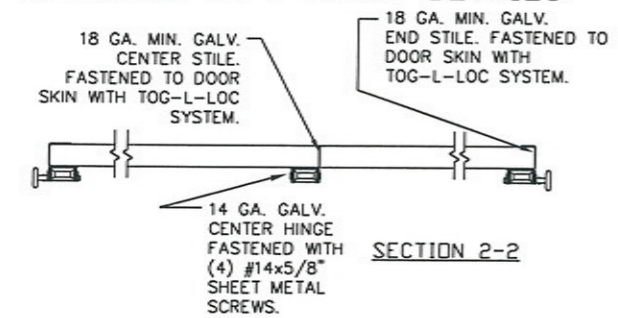
DESIGN LOADS: +30 & -30 P.S.F.
 TEST LOADS +45 & -45 P.S.F.

D
C
B
A

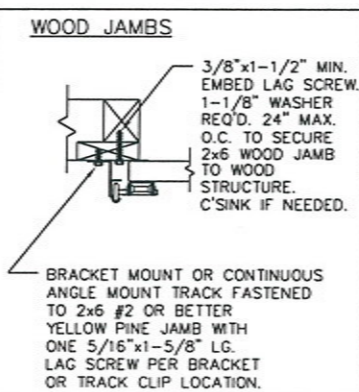
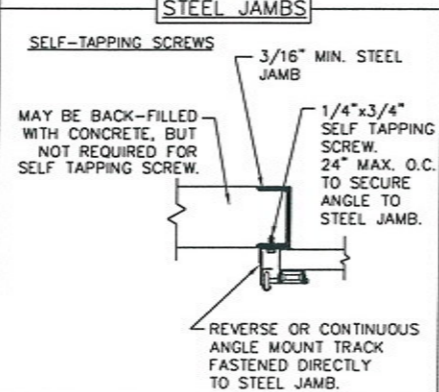
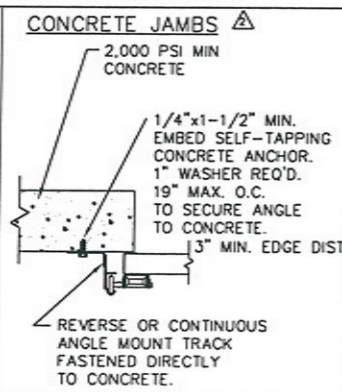
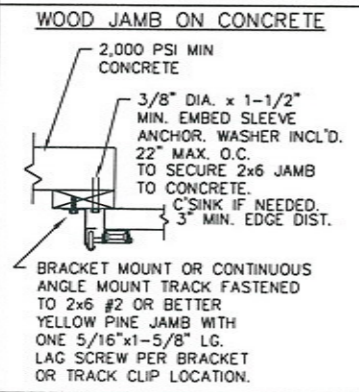
D
C
B
A



SIDE ELEVATION STANDARD-LIFT TRACK DETAILS



ANCHOR NOTE: FIRST (BOTTOM) ANCHOR STARTING AT NO MORE THAN HALF OF THE MAXIMUM ON-CENTER DISTANCE. HIGHEST ANCHOR INSTALLED AT LEAST AS HIGH AS THE DOOR OPENING.



THE DESIGN OF THE SUPPORTING STRUCTURAL ELEMENTS IS THE RESPONSIBILITY OF THE BUILDING ENGINEER OR ARCHITECT OF RECORD.

MARK WESTERFIELD, P.E.
 FLORIDA P.E. #48495, NC P.E. #23832,
 TEXAS P.E. #91513

CLOPAY CORP.
 ALL RIGHTS RESERVED.

Unless Stated Otherwise TOLERANCES are
 .0 = ±.031
 .00 = ±.015
 .000 = ±.005
 .0000 = ±.001
 Degrees = ±1/2'

Unless Stated Otherwise DIMENSIONS ARE IN INCHES.

Clopay
 Building Products Company
 8585 Duke Boulevard
 Mason, OH 45040 USA
 Tel. No. 513-770-4800
 Fax No. 513-770-4853

MANUFACTURING PRODUCT CODE:
 MPC: C-PAN-1E448

WINDLOAD RATING
 W5

DESCRIPTION: COMMERCIAL RIBBED DOOR, +/- 30 PSF DESIGN LOAD			
DRAWN BY: RJK	DATE: 4/15/99	SCALE: NOTED	DWG. B
CHECKED BY: MWW	DATE: 4/99	SHEET 1 OF 1	SIZE B
DWG. NO.: 101869	VER: TDI		