

NOTES:

1. IMPACT RESISTANT GLAZING OPTION - IMPACT RESISTANT GLAZING SYSTEM MAY BE INSTALLED IN ANY OR ALL SECTIONS. GLAZING SHALL BE 1/4" GROOVED POLYCARBONATE. ALUMINUM FRAMES ASSEMBLED WITH (16) SCREWS. MAXIMUM CLEAR OPENING OF 40" X 12-3/4", FASTENED WITH A MINIMUM #8 X 1" SMS: 6X ALONG THE HORIZONTAL AND 3X ALONG THE VERTICAL. SEE DETAIL J ON SHEET 3 FOR ASSEMBLY DETAILS.

2. VINYL OR WOOD DOOR STOP NAILED A MAXIMUM OF 6" O.C. MUST OVERLAP TOP AND BOTH ENDS OF PANELS MINIMUM 7/16" TO MEET NEGATIVE PRESSURES.

3. KEY LOCK, SLIDE LOCK, OR OPERATOR REQUIRED.

4. FACER STEEL TO HAVE A MINIMUM 29 GA THICKNESS AND BACKER STEEL TO HAVE A MINIMUM 29 GA THICKNESS.

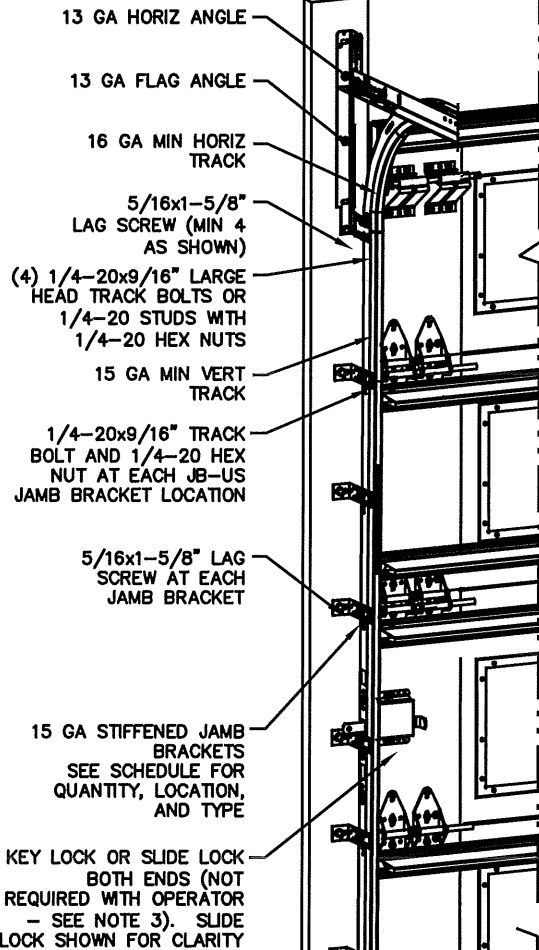
5. EACH SECTION HAS AN INTERNAL 1" WIDE X 20 GA CONTINUOUS STEEL STRIP AT THE TOP AND BOTTOM OF THE SECTION.

6. THE DESIGN OF THE SUPPORTING STRUCTURAL ELEMENTS SHALL BE THE RESPONSIBILITY OF THE PROFESSIONAL OF RECORD FOR THE BUILDING OR STRUCTURE AND IN ACCORDANCE WITH CURRENT BUILDING CODES FOR THE LOADS LISTED ON THIS DRAWING.

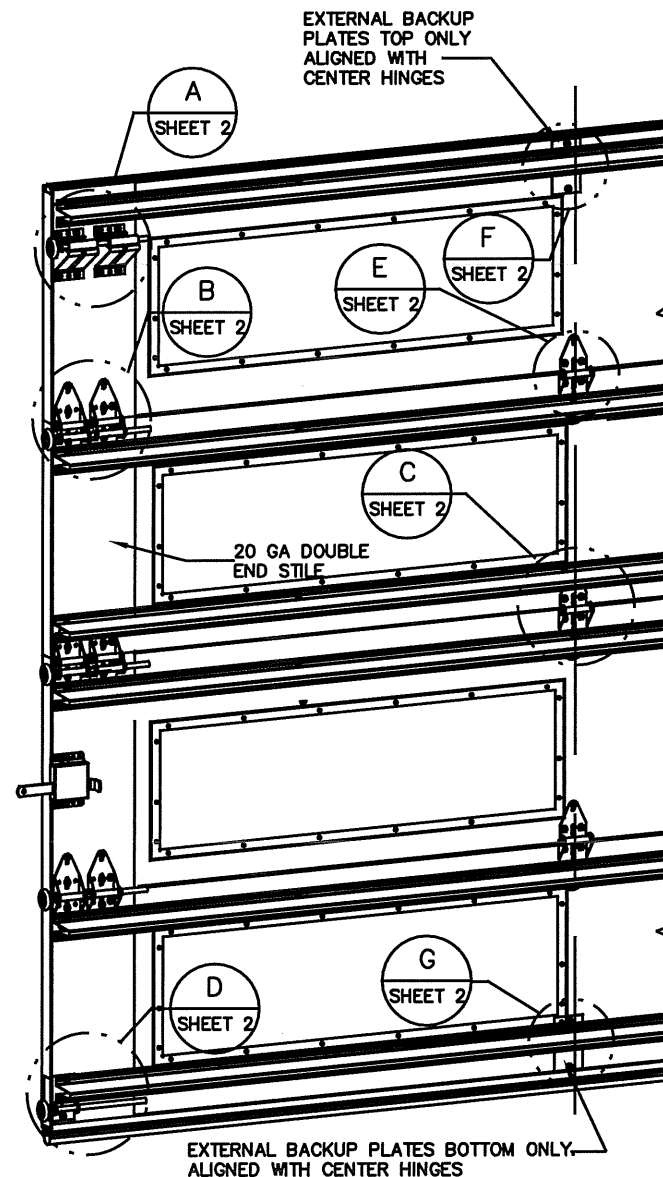
7. DOOR JAMB TO BE MINIMUM 2x6 SOUTHERN PINE LUMBER. REFER TO JAMB CONNECTION SUPPLEMENT FOR ATTACHMENT TO SUPPORTING STRUCTURE.

8. FOR LOW HEAD ROOM LIFT CONDITIONS, TOP BRACKET SHALL BE A 13 GA LHR 7/4 TOP BRACKET WITHOUT PUSHNUTS AND WITH A MINIMUM OF (3) 1/4-14x7/8" SELF DRILLING CRIMPTITE SCREWS IN LIEU OF THE BRACKET SHOWN ON THIS DRAWING. U-BAR ON TOP SECTION SHALL BE INSTALLED ON TOP OF LHR TOP BRACKETS.

9. DOORS ARE DESIGNED AND MANUFACTURED TO COMPLY WITH REGULATIONS PER BUILDING CODE: 2018 IRC AND 2018 IBC.



NOTE: (4) SECTION SOLID DOOR SHOWN. SEE NOTE 1 THIS SHEET FOR GLAZING OPTIONS.



REVISIONS

- RELEASE DRAWING SW 3/23/2021

SUPERIMPOSED DESIGN PRESSURE LOADS ON SUPPORTING STRUCTURE

DOOR WIDTH	DOOR HEIGHT	UNIFORM LOAD EACH JAMB (PLF)
8'-2"	ALL	+168.7/-190.8
9'-2"	ALL	+189.4/-214.1

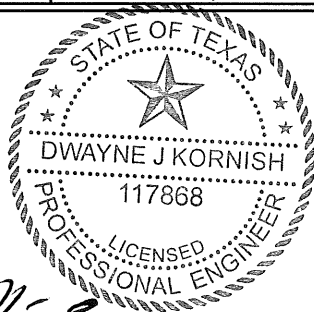
JAMB BRACKET SCHEDULE

DOOR HEIGHT	NO. OF SECTIONS	NO. OF JAMB BRACKETS (EACH JAMB)	LOCATION OF CENTERLINE OF JAMB BRACKETS MEASURED FROM BOTTOM OF TRACK (ALL DIMENSIONS ± 2")
6'-6"	4	7	2" (JB-US), 10" (JB-US), 21-3/4" (JB-US), 29-3/4" (JB-US), 39" (JB-US), 48" (JB-US), 57-1/4" (JB-US)
7'-0"	4	7	2" (JB-US), 10" (JB-US), 21-3/4" (JB-US), 29-3/4" (JB-US), 42" (JB-US), 52-1/2" (JB-US), 63-1/4" (JB-US)
7'-6"	4 OR 5	8	2" (JB-US), 10" (JB-US), 18-3/4" (JB-US), 26-3/4" (JB-US), 36" (JB-US), 45" (JB-US), 54-1/4" (JB-US), 74-1/2" (JB-US)
8'-0"	4 OR 5	8	2" (JB-US), 10" (JB-US), 21-3/4" (JB-US), 29-3/4" (JB-US), 39" (JB-US), 48" (JB-US), 57-1/2" (JB-US), 75-1/2" (JB-US)
> 8'-0"			SEE NOTE BELOW

NOTE:

(JB-US) FOLLOWING DIMENSION DENOTES SLOTTED JAMB BRACKET ATTACHED TO TRACK WITH 1/4-20x9/16" TRACK BOLT AND NUT AS SHOWN ABOVE.

ALL DOORS GREATER THAN 8' IN HEIGHT REQUIRE USE OF CONTINUOUS WALL ANGLE. SEE SUPPLEMENT TRACK CHART FOR DETAILS.



DWAYNE J. KORNISH, PE
 4576 COUNTY ROAD 160
 MOUNT HOPE, OHIO
 FL PE 77845
 TX PE 117868

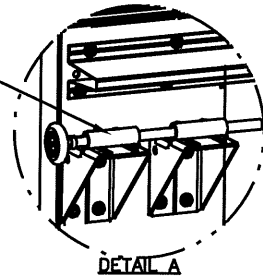
PROFESSIONAL ENGINEER'S SEAL PROVIDED ONLY FOR VERIFICATION OF WINDLOAD CONSTRUCTION DETAILS.



A DIVISION OF OVERHEAD DOOR CORP
 3395 ADDISON DRIVE
 PENSACOLA, FLORIDA 32514
 (850) 474-9890

STATIC PRESSURE RATINGS	APPROVED SIZES	SCALE: N.T.S.	SIZE: A
DESIGN (PSF): +41.30/-46.70	MAX WIDTH: 9'-2"	DATE	NAME
TEST (PSF): +61.95/-70.05	MAX HEIGHT: 24'-0"	DRAWN	SW
IMPACT/CYCLIC RATED (YES/NO): YES	MAX SECTION HEIGHT: 24"	CHECKED	
MODELS 5740/5760/190/490/7560/591-596/599		SHEET 1 OF 3	
WINDLOAD SPECIFICATION OPTION CODE 2605		DRAWING PART NO.	REV.
		411825	-

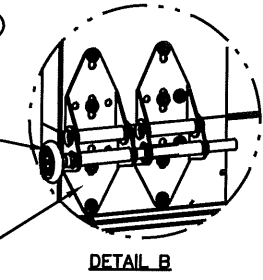
(2) 12 GA COMMERCIAL TOP FRAME BRACKETS WITH 13 GA ROLLER CARRIERS EACH ATTACHED WITH (4) 1/4-20x3/4" SELF DRILLING SCREWS



DETAIL A

ADD (2) 1/4-20x3/4" SELF DRILLING SCREWS (INSIDE OF EACH INSIDE END HINGE)

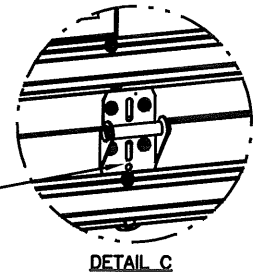
2" STEEL ROLLER WITH 9" GRADE 1144 OR EQUIVALENT STEM AND 7/16" PUSH NUT AT EACH ROLLER LOCATION. 1/4" MAX BETWEEN PUSH NUT AND OUTER HINGE. (OPTIONAL: BALL BEARING NYLON ROLLER)



DETAIL B

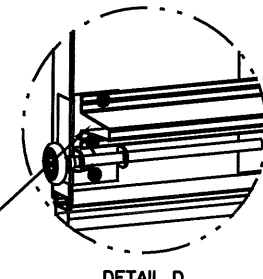
(2) 13 GA WIDE BODY END HINGES EACH ATTACHED WITH (4) 1/4-20x3/4" SELF DRILLING SCREWS

14 GA WIDE BODY EXTENDED HINGE ATTACHED WITH (7) 1/4-20x3/4" SELF DRILLING SCREWS. (2 THROUGH STRUT AND HINGE)



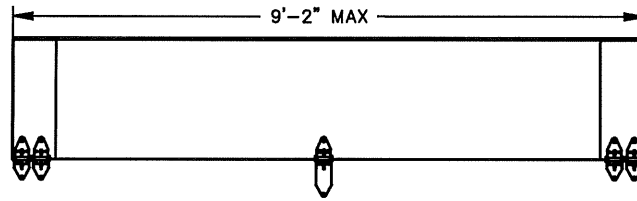
DETAIL C

14 GA BOTTOM BRACKET ATTACHED WITH (3) 1/4-20x3/4" SELF DRILLING SCREWS (2 THROUGH STRUT AND BRACKET)

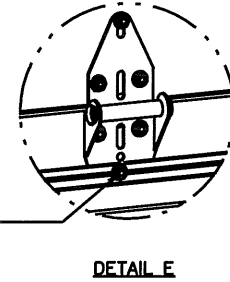


DETAIL D

HINGE & BACKER PLATE LOCATIONS

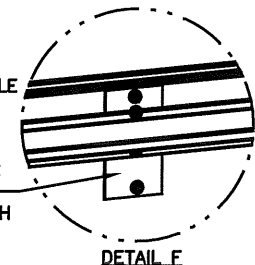


14 GA WIDE BODY EXTENDED HINGE ATTACHED WITH (7) 1/4-20x3/4" SELF DRILLING SCREWS. (2 THROUGH STRUT AND HINGE)



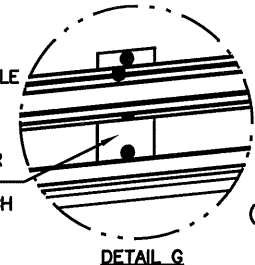
DETAIL E

20 GA BACK PLATE ATTACHED WITH DOUBLE SIDED TAPE AND (2) 1/4-20x3/4" SELF DRILLING SCREWS AT TAPE LOCATION. UBAR ATTACHED WITH (2) 1/4-20x3/4" THROUGH STRUT AND PLATE.

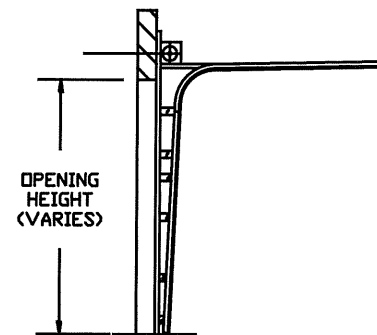


DETAIL F

20 GA BACK PLATE ATTACHED WITH DOUBLE SIDED TAPE AND (2) 1/4-20x3/4" SELF DRILLING SCREWS AT TAPE LOCATION. UBAR ATTACHED WITH (2) 1/4-20x3/4" THROUGH STRUT AND PLATE.



DETAIL G



OPTIONAL 2-PIECE TRACK DETAIL

(10) SECTION DOORS WITH (15) 3" 18 GA 80 KSI U-BARS LOCATED AS SHOWN

(9) SECTION DOORS WITH (14) 3" 18 GA 80 KSI U-BARS LOCATED AS SHOWN

(8) SECTION DOORS WITH (12) 3" 18 GA 80 KSI U-BARS LOCATED AS SHOWN

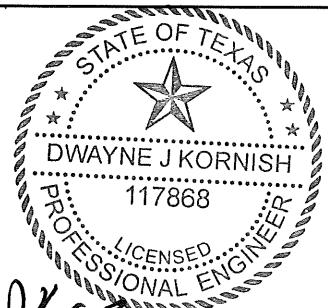
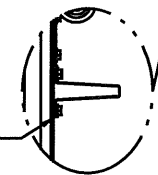
(7) SECTION DOORS WITH (11) 3" 18 GA 80 KSI U-BARS LOCATED AS SHOWN

(6) SECTION DOORS WITH (9) 3" 18 GA 80 KSI U-BARS LOCATED AS SHOWN

(5) SECTION DOORS WITH (8) 3" 18 GA 80 KSI U-BARS LOCATED AS SHOWN

(4) SECTION DOORS WITH (6) 3" 18 GA 80 KSI U-BARS LOCATED AS SHOWN

ALL U-BARS SHALL BE ATTACHED WITH (2) 1/4-20x3/4" SELF DRILLING SCREWS AT EACH HINGE LOCATION AND BETWEEN ALL END HINGES AND INTERMEDIATE HINGES. A MINIMUM OF (14) FASTENERS ARE TO BE USED.



DWAYNE J. KORNISH, PE
4576 COUNTY ROAD 160
MOUNT HOPE, OHIO
FL PE 77945
TX PE 117868

PROFESSIONAL ENGINEER'S SEAL PROVIDED ONLY FOR VERIFICATION OF WINDLOAD CONSTRUCTION DETAILS.

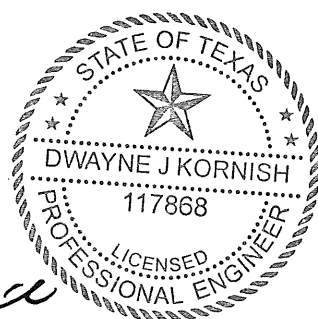
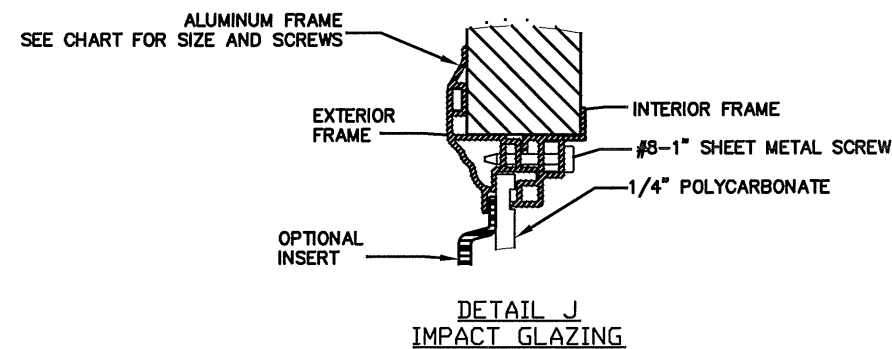
The Genuine. The Original.



A DIVISION OF OVERHEAD DOOR CORP
3395 ADDISON DRIVE
PENSACOLA, FLORIDA 32514
(850) 474-9890

STATIC PRESSURE RATINGS	APPROVED SIZES	SCALE: N.T.S.	SIZE: A
DESIGN (PSF): +41.30/-46.70	MAX WIDTH: 9'-2"	DATE	NAME
TEST (PSF): +61.95/-70.05	MAX HEIGHT: 24'-0"	DRAWN 03/23/21	SW
IMPACT/CYCLIC RATED (YES/NO): YES	MAX SECTION HEIGHT: 24"	CHECKED	
MODELS 5740/5760/190/490/7560/591-596/599		SHEET 2 OF 3	
WINDLOAD SPECIFICATION OPTION CODE 2605		DRAWING PART NO. 411825	REV. -

OUTSIDE FRAME SIZE	DAYLIGHT OPENING (DLO)	SCREW QTY EA HORIZ LEG	SCREW QTY EA VERT LEGS	SCREW QTY TOTAL	DETAIL
7"X40.8	4"X37.8"	5	2	14	J
15.3"X44.1"	11.3"X40.1"	6	3	18	J
14.6"X20.8"	10.6"X16.8"	3	2	10	J
13"X38"	9"X34"	5	2	14	J



DJK
5/20/2021

DWAYNE J. KORNISH, PE
4576 COUNTY ROAD 180
MOUNT HOPE, OHIO
FL PE 77945
TX PE 117868

PROFESSIONAL ENGINEER'S SEAL PROVIDED ONLY FOR VERIFICATION OF WINDLOAD CONSTRUCTION DETAILS.

The Genuine. The Original.



A DIVISION OF OVERHEAD DOOR CORP
3395 ADDISON DRIVE
PENSACOLA, FLORIDA 32514
(850) 474-8890

STATIC PRESSURE RATINGS		APPROVED SIZES	SCALE: N.T.S.	SIZE: A
DESIGN (PSF):	+41.30/-46.70	MAX WIDTH: 9'-2"	DATE	NAME
TEST (PSF):	+61.95/-70.05	MAX HEIGHT: 24'-0"	DRAWN	03/23/21
IMPACT/CYCLIC RATED (YES/NO): YES		MAX SECTION HEIGHT: 24"	CHECKED	
MODELS 5740/5760/190/490/7560/591-596/599			SHEET 3 OF 3	
WINDLOAD SPECIFICATION OPTION CODE 2605			DRAWING PART NO.	REV.
			411825	-