

NOTES:

1. IMPACT RESISTANT GLAZING OPTION – IMPACT RESISTANT GLAZING SYSTEM MAY BE INSTALLED IN ANY OR ALL SECTIONS. GLAZING SHALL BE 1/4" GROOVED POLYCARBONATE. ALUMINUM FRAMES ASSEMBLED WITH (16) SCREWS. MAXIMUM CLEAR OPENING OF 40" X 12-3/4", FASTENED WITH A MINIMUM #8 X 1" SMS: 5X ALONG THE HORIZONTAL AND 3X ALONG THE VERTICAL. SEE DETAIL E ON SHEET 2 FOR ASSEMBLY DETAILS.

2. VINYL OR WOOD DOOR STOP NAILED A MAXIMUM OF 6" O.C. MUST OVERLAP TOP AND BOTH ENDS OF PANELS MINIMUM 7/16" TO MEET NEGATIVE PRESSURES.

3. KEY LOCK, SLIDE LOCK, OR OPERATOR REQUIRED.

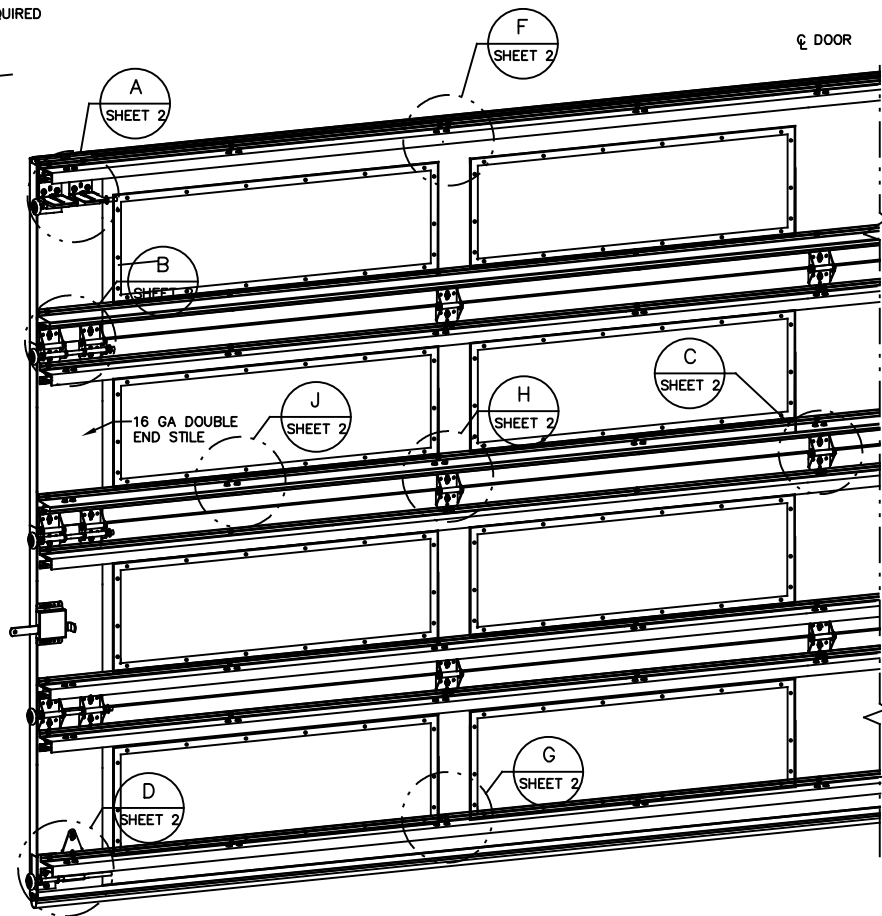
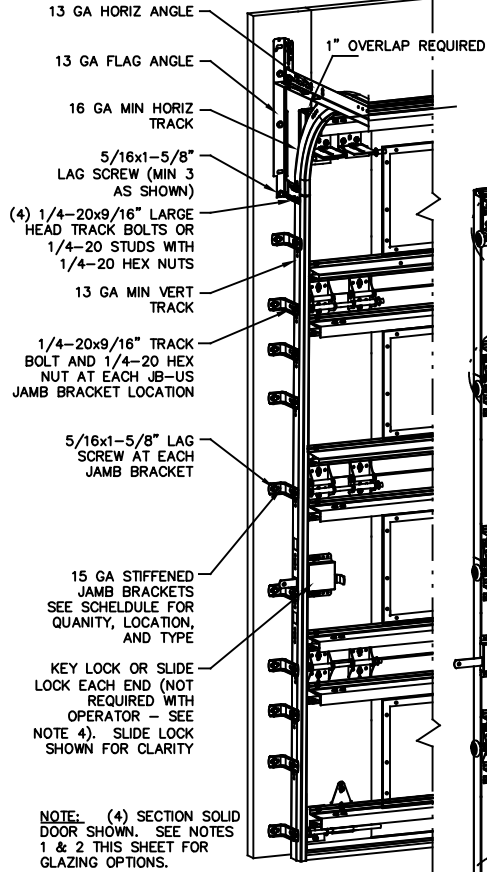
4. MINIMUM 1" OVERLAP ON BOTH JAMBS REQUIRED TO MEET NEGATIVE DESIGN PRESSURES.

5. THE DESIGN OF THE SUPPORTING STRUCTURAL ELEMENTS SHALL BE THE RESPONSIBILITY OF THE PROFESSIONAL OF RECORD FOR THE BUILDING OR STRUCTURE AND IN ACCORDANCE WITH CURRENT BUILDING CODES FOR THE LOADS LISTED ON THIS DRAWING.

6. DOOR JAMB TO BE MINIMUM 2x6 SOUTHERN PINE LUMBER. REFER TO JAMB CONNECTION SUPPLEMENT FOR ATTACHMENT TO SUPPORTING STRUCTURE.

7. FOR LOW HEAD ROOM LIFT CONDITIONS, TOP BRACKET SHALL BE A 13 GA LHR 7/4 TOP BRACKET WITHOUT PUSHNUTS AND WITH A MINIMUM OF (3) 1/4-14x7/8" SELF DRILLING CRIMP TITE SCREWS IN LIEU OF THE BRACKET SHOWN ON THIS DRAWING. U-BAR ON TOP SECTION SHALL BE INSTALLED ON TOP OF LHR TOP BRACKETS.

8. COMPLIES WITH THE REQUIREMENTS OF IBC/IRC 2018.



REVISIONS
REV – INITIAL DRAWING
JQ 3/09/21

SUPERIMPOSED DESIGN PRESSURE LOADS ON SUPPORTING STRUCTURE

DOOR WIDTH	DOOR HEIGHT	UNIFORM LOAD EACH JAMB (PLF)
17'-2"	ALL	+354.5/-400.8
18'-2"	ALL	+375.1/-424.2

JAMB BRACKET SCHEDULE

DOOR HEIGHT	NO. OF SECTIONS	NO. OF JAMB BRACKETS (EACH JAMB)	LOCATION OF CENTERLINE OF JAMB BRACKETS MEASURED FROM BOTTOM OF TRACK (ALL DIMENSIONS ± 2")
6'-6"	4	9	2", 10", 16", 21-3/4", 29-3/4", 42", 48", 55", 63-1/4"
7'-0"	4	9	2", 10", 16", 21-3/4", 29-3/4", 42", 48", 55", 63-1/4"
7'-6"	4 OR 5	11	2", 10", 16", 21-3/4", 29-3/4", 40", 48", 57-1/4", 66", 71", 75-1/2"
8'-0"	4 OR 5	11	2", 10", 16", 21-3/4", 29-3/4", 40", 48", 57-1/4", 66", 71", 75-1/2"
> 8'-0"			SEE NOTE BELOW

NOTE:
(JB-US) FOLLOWING DIMENSION DENOTES SLOTTED JAMB BRACKET ATTACHED TO TRACK WITH 1/4-20x9/16" TRACK BOLT AND NUT AS SHOWN ABOVE.
ALL DOORS GREATER THAN 8' IN HEIGHT REQUIRE USE OF CONTINUOUS WALL ANGLE. SEE SUPPLEMENT TRACK CHART FOR DETAILS.

JOHN E. SCATES, PE
2560 KING ARTHUR #124-54
LEWISVILLE, TX 75056
FL PE 51737
TX PE 56308/P2203
PROFESSIONAL ENGINEER'S SEAL PROVIDED ONLY FOR VERIFICATION OF WINDLOAD CONSTRUCTION DETAILS.

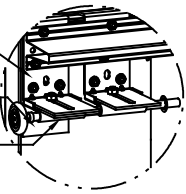
Wayne Dalton
GARAGE DOORS™
A DIVISION OF OVERHEAD DOOR CORP
3395 ADDISON DRIVE
PENSACOLA, FLORIDA 32514
(850) 474-9890

STATIC PRESSURE RATINGS		APPROVED SIZES		SCALE: N.T.S.		SIZE: A	
DESIGN (PSF):	+41.30/-46.70	MAX WIDTH:	18'-2"	DATE	NAME		
TEST (PSF):	+61.95/-70.05	MAX HEIGHT:	24'-0"	DRAWN	JQ		
IMPACT/CYCLIC RATED (YES/NO): YES		MAX SECTION HEIGHT:	24"	CHECKED	DK		
MODELS 4600/4650/6600/8300/8350/8500/5150/5200				SHEET 1 OF 2			
WINDLOAD SPECIFICATION OPTION CODE 2619				DRAWING PART NO.		REV.	
				365452		-	

(2) 12 GA COMMERCIAL 'L' FRAME TOP BRACKETS ATTACHED WITH (4) 1/4-20x7/8" SELF DRILLING SCREWS (2 THROUGH STRUT AND TOP BRACKET)

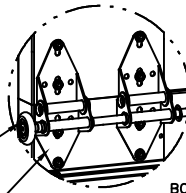
'L' FRAME REINFORCING ANGLE BRACKET ATTACHED WITH (1) 1/4-20x7/8" SELF DRILLING SCREWS

13 GA ROLLER SLIDE ATTACHED TO BRACKET WITH 5/16-18 BOLT & NUT IN THE CENTER SLOT



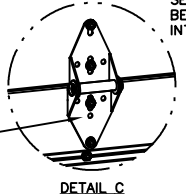
DETAIL A

2" STEEL ROLLER WITH 9" GRADE 1144 OR EQUIVALENT STEM, 1/4" MAX BETWEEN PUSH NUT AND OUTER HINGE. OPTIONAL - 11 BALL BEARING NYLON ROLLER WITH 1144 OR EQUIVALENT STEM.



DETAIL B

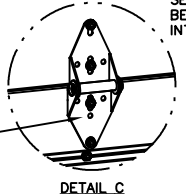
(2) WIDE BODY END HINGES EACH ATTACHED WITH (4) 1/4-14x7/8" SELF DRILLING CRIMPITTE SCREWS



DETAIL C

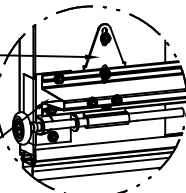
DOUBLE END HINGE
#1 HINGE 14GA
#2 HINGE 13GA
#3 HINGE 13GA

14 GA WIDE BODY INTERMEDIATE HINGE ATTACHED WITH (4) 1/4-14x7/8" SELF DRILLING CRIMPITTE SCREWS



DETAIL D

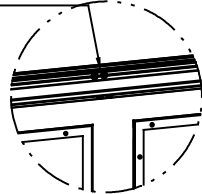
12 GA EXTENSION BRACKET ATTACHED WITH (4) 1/4-14x7/8" SELF DRILLING CRIMPITTE SCREWS



DETAIL E

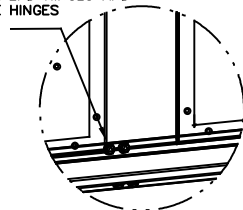
14 GA BOTTOM BRACKET ATTACHED WITH (2) 1/4-14x7/8" SELF DRILLING CRIMPITTE SCREWS THROUGH STRUT AND BOTTOM BRACKET AND (1) 1/4-14x5/8" SELF DRILLING TAMPER RESISTANT SCREW

TOP AND BOTTOM U-BARS SHALL BE ATTACHED WITH (4) 1/4-14x7/8" SELF DRILLING CRIMPITTE SCREWS AT EACH HINGE LOCATION.



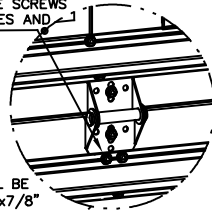
DETAIL F

BOTTOM U-BAR SHALL BE ATTACHED WITH (4) 1/4-14x7/8" SELF DRILLING CRIMPITTE SCREWS AT EACH HINGE LOCATION, AND (2) 1/4-14x7/8" SELF DRILLING CRIMPITTE SCREWS BETWEEN ALL END HINGES AND INTERMEDIATE HINGES



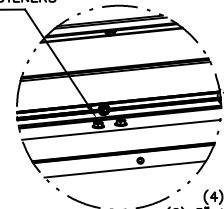
DETAIL G

U-BARS WITH 2X2X12GA ANGLES SHALL BE ATTACHED WITH (3) 1/4-14x7/8" SELF DRILLING CRIMPITTE SCREWS AT EACH HINGE LOCATION AND (2) 1/4-14x7/8" SELF DRILLING CRIMPITTE SCREWS BETWEEN ALL END HINGES AND INTERMEDIATE HINGES.



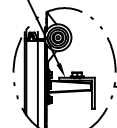
DETAIL H

ALL 2X2X12GA ANGLE SHALL BE ATTACHED WITH (2) 1/4-14x7/8" SELF DRILLING CRIMPITTE SCREWS SIDE BY SIDE AT EACH HINGE LOCATION AND BETWEEN ALL END HINGES AND INTERMEDIATE HINGES. A MINIMUM OF (18) FASTENERS ARE TO BE USED.

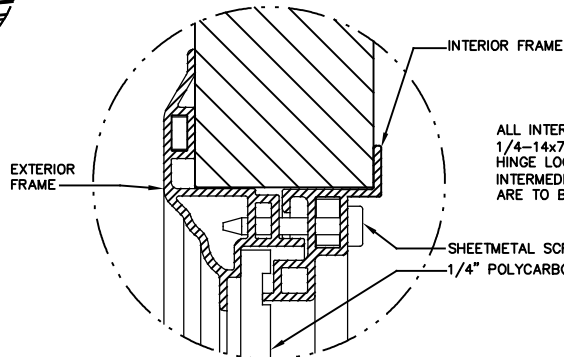


DETAIL I

ALL 2X2X12GA ANGLE SHALL BE ATTACHED WITH (2) 1/4-14x7/8" SELF DRILLING CRIMPITTE SCREWS AT EACH HINGE LOCATION AND BETWEEN ALL END HINGES AND INTERMEDIATE HINGES. A MINIMUM OF (18) FASTENERS ARE TO BE USED.



DETAIL J



DETAIL K

ALL INTERMEDIATE U-BARS SHALL BE ATTACHED WITH (2) 1/4-14x7/8" SELF DRILLING CRIMPITTE SCREWS AT EACH HINGE LOCATION AND BETWEEN ALL END HINGES AND INTERMEDIATE HINGES. A MINIMUM OF (22) FASTENERS ARE TO BE USED.



IMPACT FRAME SIZE	DAYLIGHT OPENING (DLO)	SCREW QTY
19.2 X 15.3	15 X 11	10
19.8 X 16.8	15.75 X 12.75	10
40 X 12.8	35.8 X 8.6	14
42 X 16.8	37.8 X 12.75	14
41.2 X 7.1	37 X 3	12
44.1 X 15.5	40.13 X 11.25	16

(10) SECTION DOORS WITH (20) 3" 18 GA 80 KSI U-BARS (15) 2X2X12GA ANGLES LOCATED AS SHOWN

(9) SECTION DOORS WITH (18) 3" 18 GA 80 KSI U-BARS (14) 2X2X12GA ANGLES LOCATED AS SHOWN

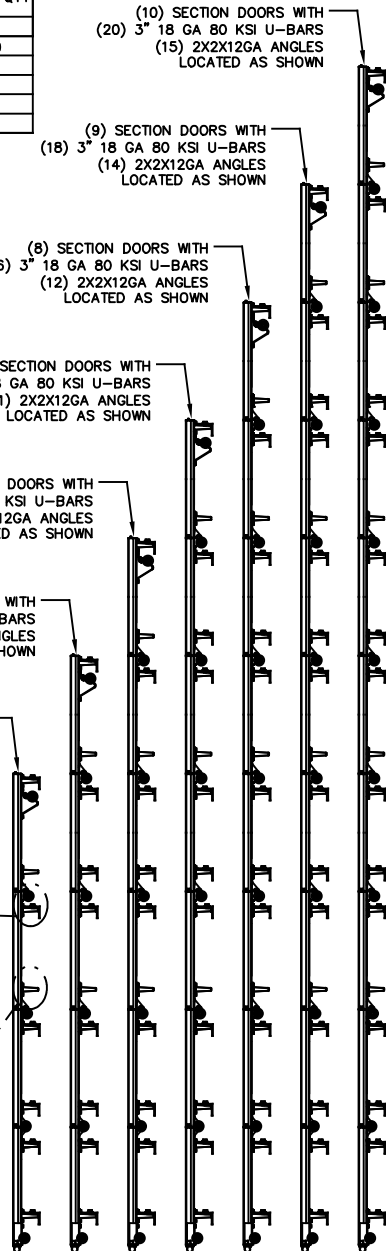
(8) SECTION DOORS WITH (16) 3" 18 GA 80 KSI U-BARS (12) 2X2X12GA ANGLES LOCATED AS SHOWN

(7) SECTION DOORS WITH (14) 3" 18 GA 80 KSI U-BARS (11) 2X2X12GA ANGLES LOCATED AS SHOWN

(6) SECTION DOORS WITH (12) 3" 18 GA 80 KSI U-BARS (9) 2X2X12GA ANGLES LOCATED AS SHOWN

(5) SECTION DOORS WITH (10) 3" 18 GA 80 KSI U-BARS (8) 2X2X12GA ANGLES LOCATED AS SHOWN

(4) SECTION DOORS WITH (8) 3" 18 GA 80 KSI U-BARS (6) 2X2X12GA ANGLES LOCATED AS SHOWN



JOHN E. SCATES, PE
2560 KING ARTHUR #124-54
LEWISVILLE, TX 75056
FL PE 51737
TX PE 56308/F2203

PROFESSIONAL ENGINEER'S SEAL PROVIDED ONLY FOR VERIFICATION OF WINDLOAD CONSTRUCTION DETAILS.

Wayne Dalton
GARAGE DOORS

A DIVISION OF OVERHEAD DOOR CORP
3395 ADDISON DRIVE
PENSACOLA, FLORIDA 32514
(850) 474-9890

STATIC PRESSURE RATINGS		APPROVED SIZES		SCALE: N.T.S.		SIZE: A	
DESIGN (PSF):	+41.30/-46.70	MAX WIDTH:	18'-2"	DATE	NAME		
TEST (PSF):	+61.95/-70.05	MAX HEIGHT:	24'-0"	DRAWN	JQ		
IMPACT/CYCLIC RATED (YES/NO):	YES	MAX SECTION HEIGHT:	24"	CHECKED	DK		
MODELS 4600/4650/6600/8300/8350/8500/5150/5200				SHEET 2 OF 2			
WINDLOAD SPECIFICATION OPTION CODE 2619				DRAWING PART NO.		REV.	
				365452		-	